
GOVERNMENT NOTICES • GOEWERMENTSKENNISGEWINGS

DEPARTMENT OF TRANSPORT

NO. 4423

23 February 2024

**THE SOUTH AFRICAN NATIONAL ROADS
AGENCY SOC LIMITED**Registration No: 1998/009584/30

**A. DECLARATION AMENDMENT OF NATIONAL ROADS N8 SECTION 12 AND N8 SECTION 13
AND DECLARATION OF THE EXTENTION OF NATIONAL ROAD N8 SECTION 12 – DISTRICT
OF THABO MOFUTSANYANE, IN THE PROVINCE OF THE FREE STATE**

- i) By virtue of Section 40 (1)(a) of The South African National Road Agency Limited and National Roads Act 1998 (Act No. 7 of 1998), I hereby declare the section of the road, commencing from its intersection with existing National Road N8 Section 12 and Road R26 Section 5, up to its intersection with existing National Road N8 Section 13, as a National Road.
- ii) By virtue of section 40(1)(b) of The South African National Roads Agency Limited and National Roads Act, 1998 (Act No. 7 of 1998), I hereby amend **(I)** Declaration No. 901 of 2021 the section of the road from the common boundary between the farms Damplaats 55 and Newlands 42 up to its intersection with Road R26 Section 5, near points L243 and R239 on sheet 14 of Plan No. P1142/19, **(II)** Declaration No. 900 of 2021 the section of the road from points L43 and R39 on sheet 2 of Plan No. P1146/19 up to its end at the Lesotho National Border, by substituting all sheets of their respective Plans with the accompanying sheets 1 to 9 of Plan No. P1234/23.

[National Road N8 Section 12: R26 Intersection – Lesotho National Border]**MINISTER OF TRANSPORT**

DEPARTEMENT VAN VERVOER

NO. 4423

23 Februarie 2024

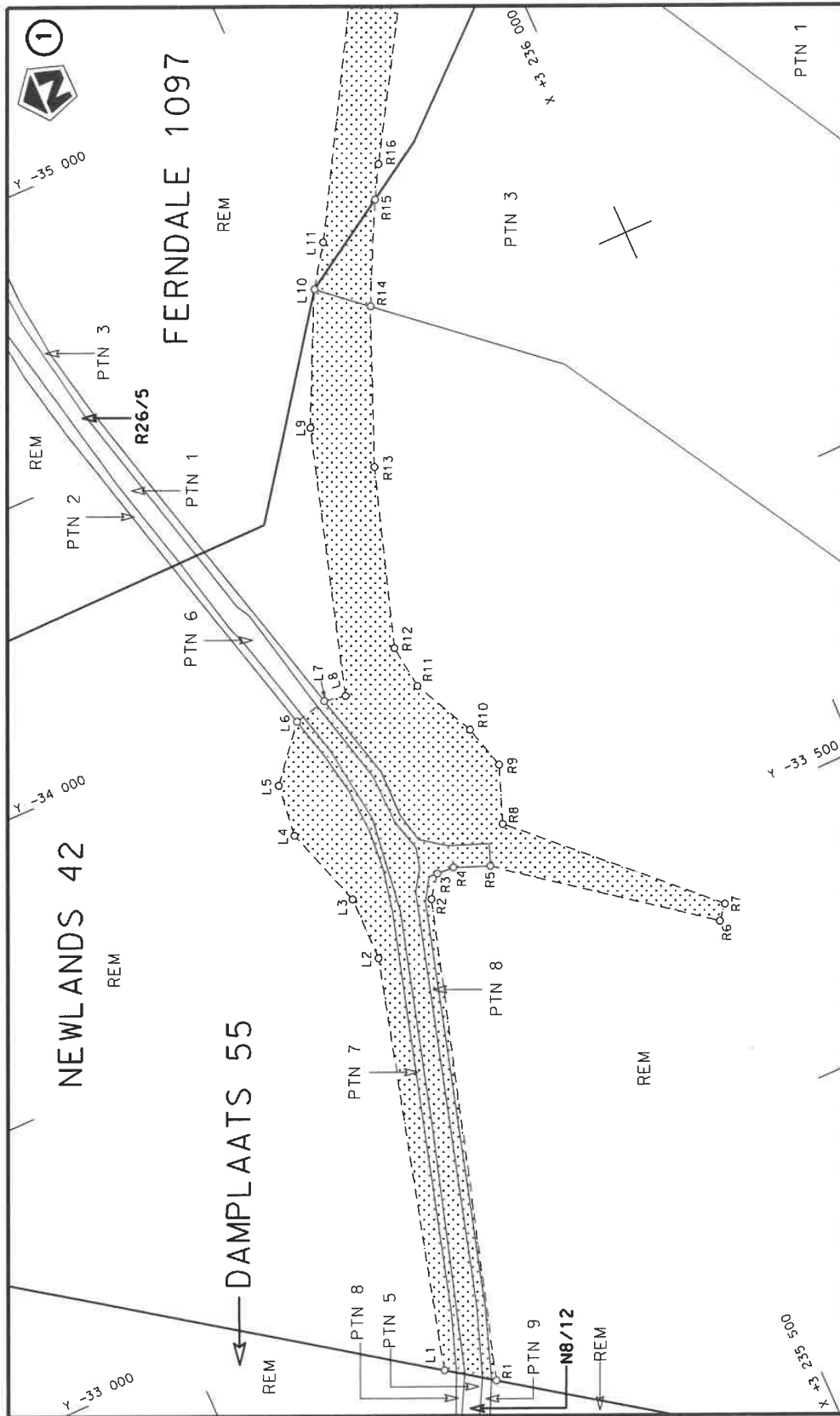
**DIE SUID-AFRIKAANSE NASIONALE
PADAGENTSAP MSB BEPERK**

Registrasie No: 1998/009584/30

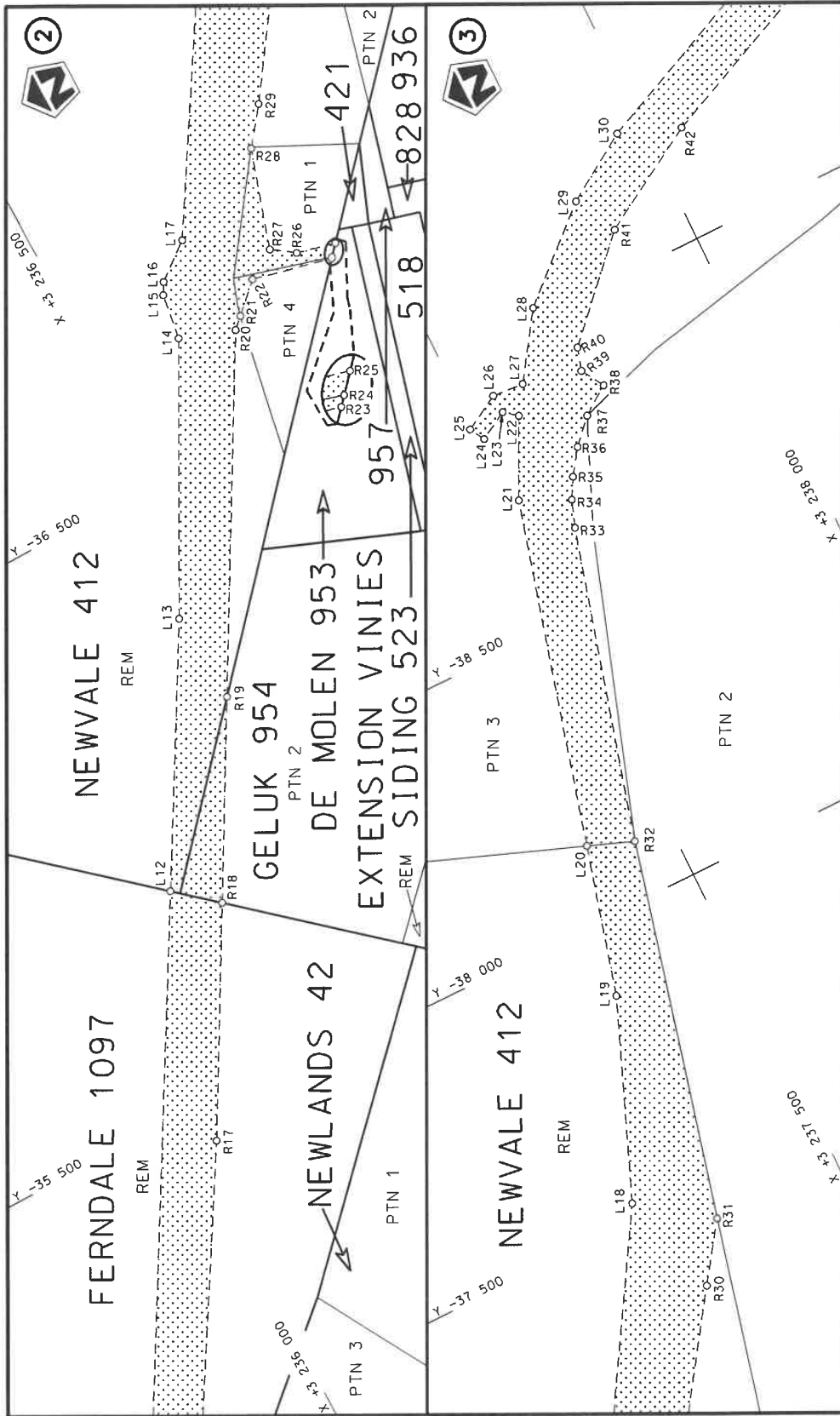
**A. VERKLARING WYSIGING VAN NASIONALE PAAIE N8 SEKSIE 12 EN N8 SEKSIE 13 EN
VERKLARING VAN DIE VERLENGING VAN NASIONALE PAD N8 SEKSIE 12 – DISTRIKT
VAN THABO MOFUTSANYANE, IN DIE PROVINSIE VAN DIE VRYSTAAT.**

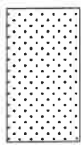
- i) Kragtens Artikel 40(1)(a) van die Wet op die Suid-Afrikaanse Nasionale Padagentskap Beperk en op Nasionale Paaie, Wet 1998 (Wet No. 7 van 1998), verklaar ek hiermee die seksie van pad beginnende vanaf die interseksie met die bestaande Nasionale Pad N8 Seksie 12 en Pad R26 Seksie 5 tot by die interseksie met die bestaande Nasionale Pad N8 Seksie 13, as 'n Nasionale Pad.
- ii) Kragtens Artikel 40(1)(b) van die Wet op die Suid-Afrikaanse Nasionale Padagentskap Beperk en op Nasionale Paaie, 1998 (Wet No.7 van 1998), wysig ek hiermee (I) Verklaring No. 901 van 2021 die seksie van pad vanaf die algemene grense tussen die plase Damplaats 55 en Newlands 42 tot by die interseksie met Pad R26 Section 5, naby punte L243 en R239 op vel 14 van Plan No. P1142/19, (II) Verklaring No. 900 van 2021 die seksie van pad vanaf punte L43 en R39 op vel 2 van Plan No. P1146/19 tot op sy einde by die Lesotho Nasionale Grens, deur alle velle van hulle respektiewelike Planne te vervang met meegaande velle 1 tot 9 van Plan No. P1234/23.

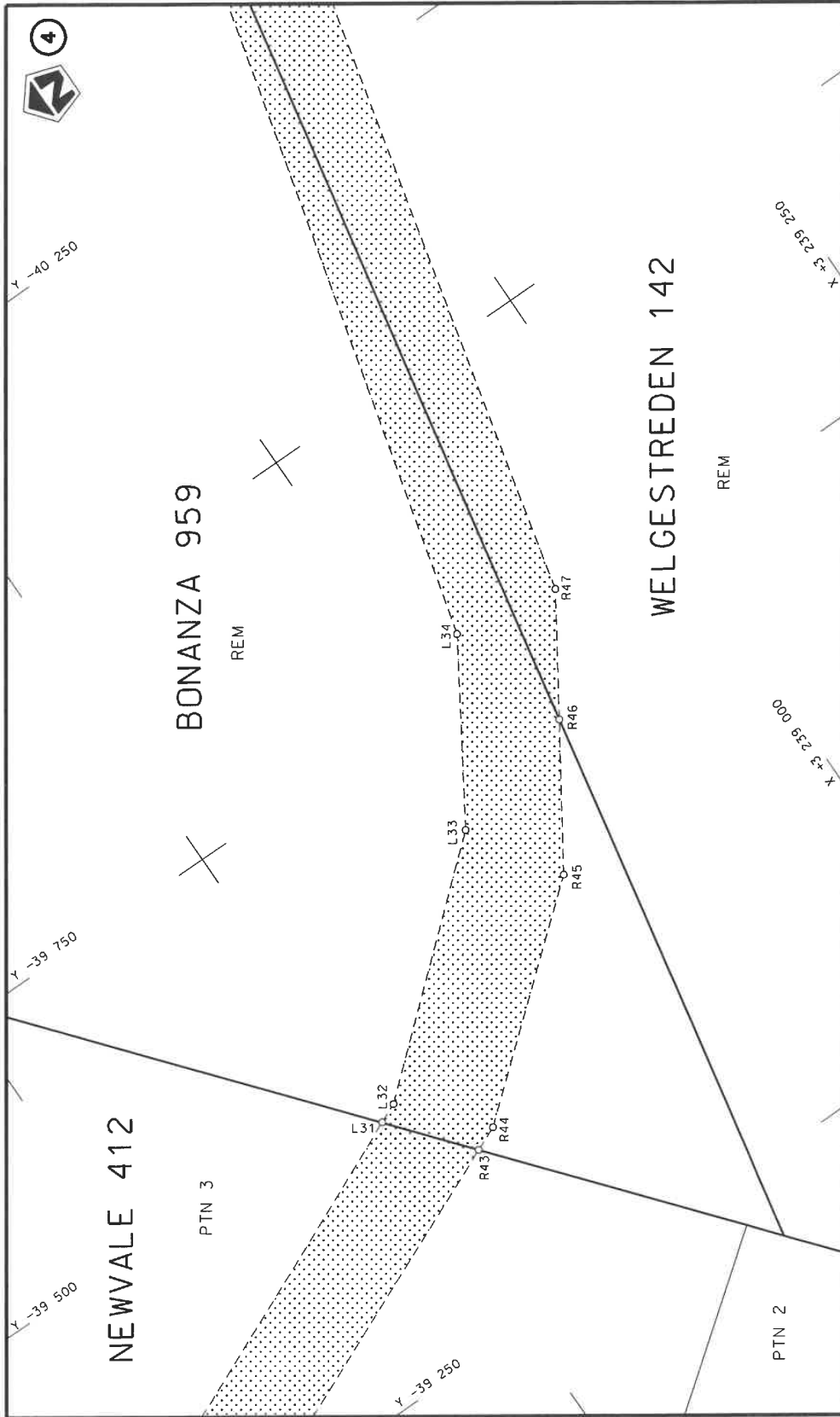
[Nasionale Pad N8 Seksie 12: R26 Interseksie – Lesotho Nasionale Grens]**MINISTER VAN VERVOER**

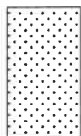


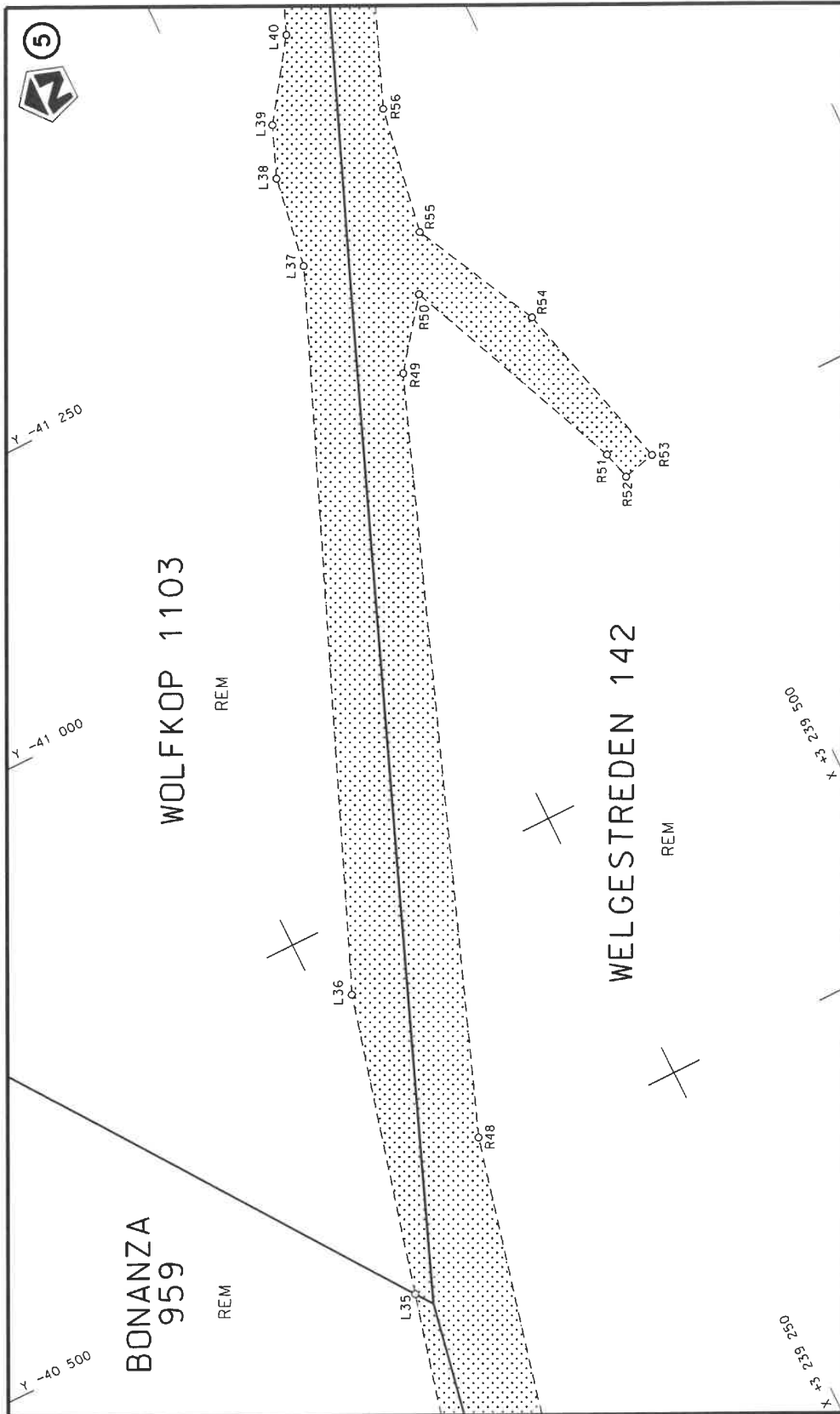
<p>Die Suid Afrikaanse Nasionale Padagentskap MSB Bpk The South African National Roads Agency SOC Ltd</p>	<p>Die figuur getoon The figure shown</p>	<p>stelt die padreserwe voor van 'n gedeelte represents the road reserve of a portion van Nasionale Roete N8 of National Route Section</p>	<p>Vel Sheet 1 of 9 Plan P1234/23</p>
---	---	--	---



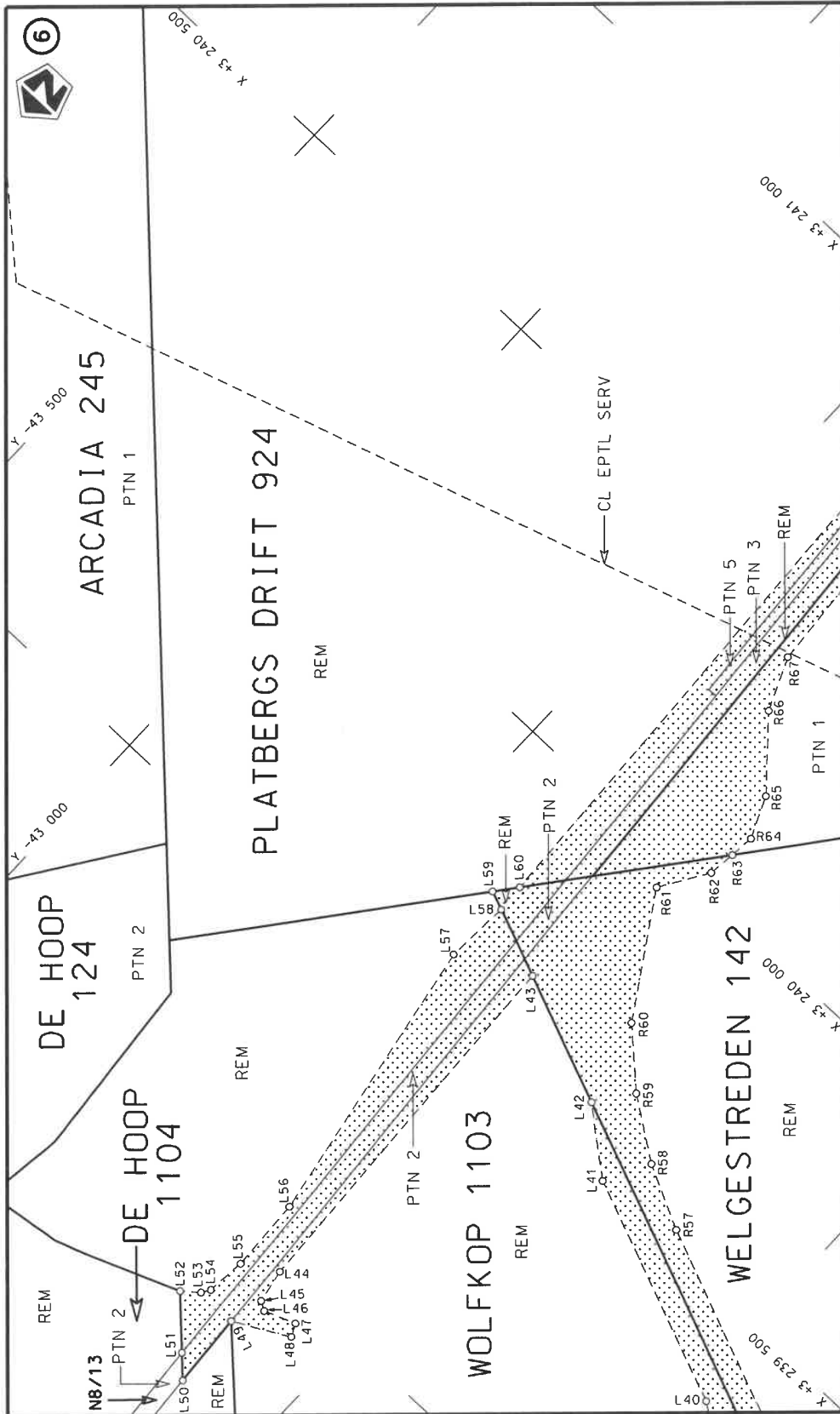
<p>Die Suid Afrikaanse Nasionale Padagentskap MSB Bpk The South African National Roads Agency SOC Ltd</p>	<p>Die figuur getoon The figure shown</p>		<p>steidie padreserwe voor van 'n gedeelte represents the road reserve of a portion van Nasionale Roete N8 of National Route</p>	<p>Vel van van Sheet 2 of 9 Plan P1234/23</p>
			<p>12</p>	<p>12</p>




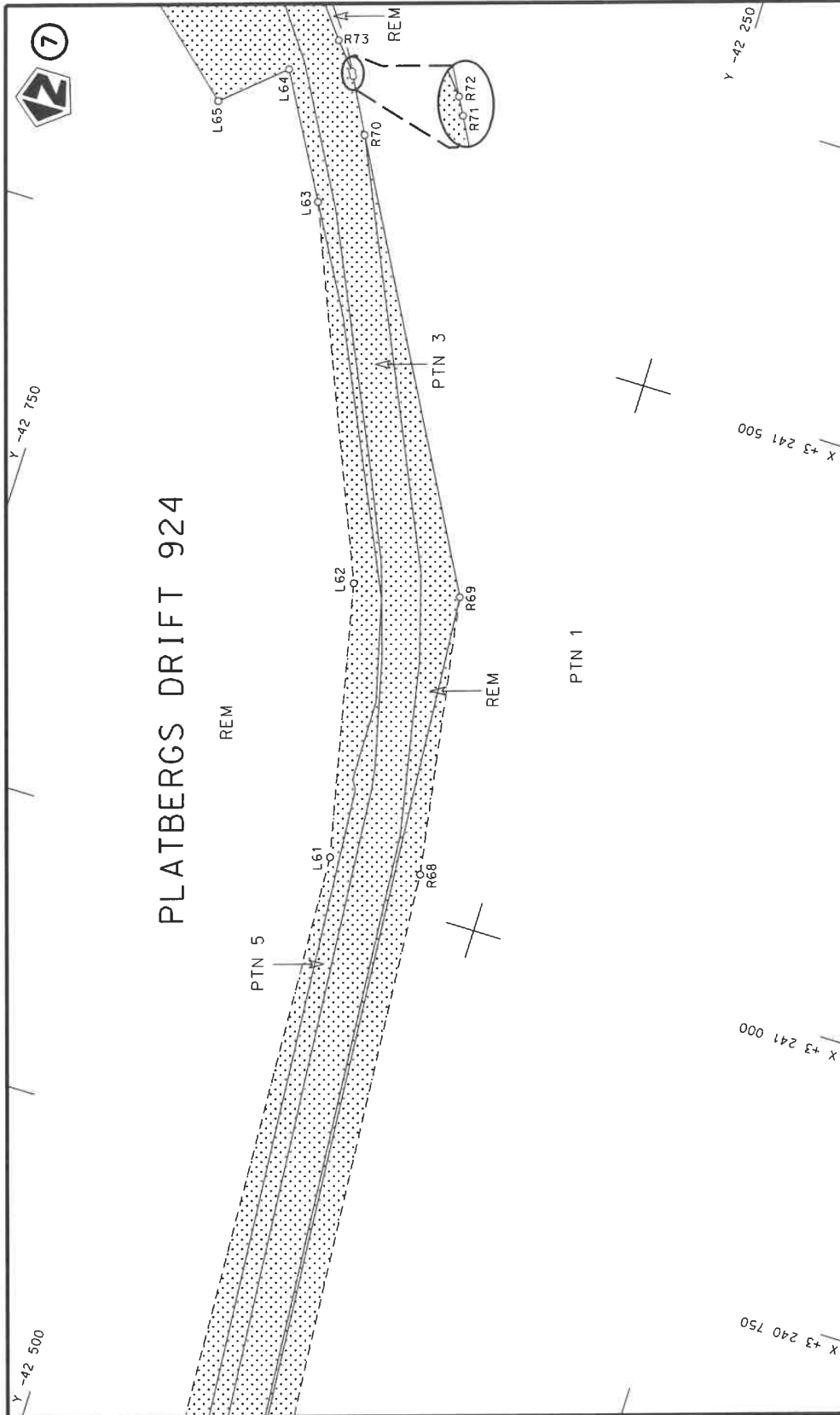
<p>Die Suid Afrikaanse Nasionale Padagentskap MSB Bpk The South African National Roads Agency SOC Ltd</p>	<p>Die figuur getoon The figure shown</p> 	<p>steldie padreserwe voor van 'n gedeelte represents the road reserve of a portion van Nasionale Roete N8 of National Route</p> <p>Seksie Section</p> <p>N8 12</p>	<p>Vel Sheet</p> <p>van of</p> <p>3 9</p> <p>Plan P1234/23</p>
---	---	---	--

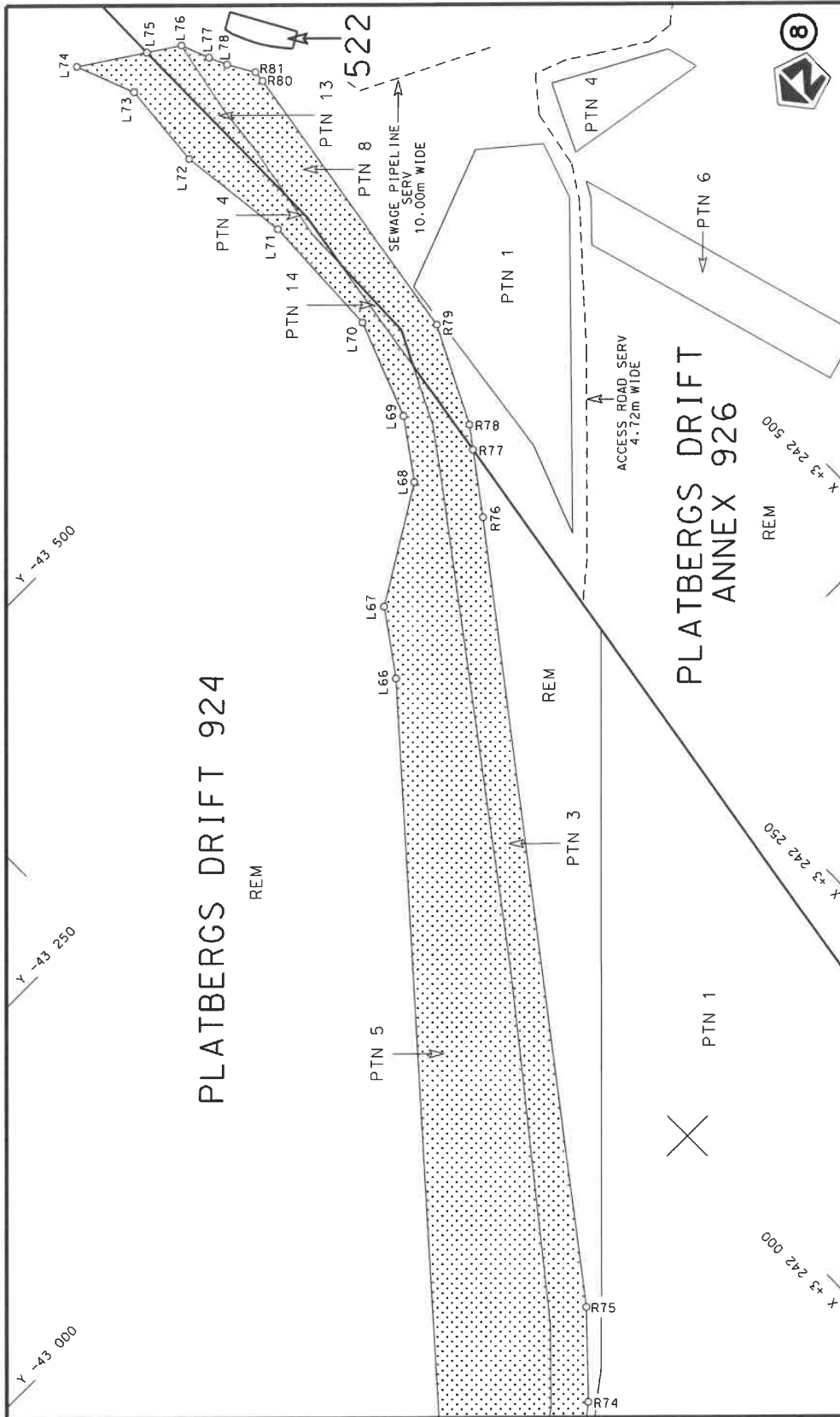


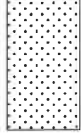
<p>Die Suid-Afrikaanse Nasionale Padagentskap MSB Bpk The South African National Roads Agency SOC Ltd</p>	<p>Die figuur getoon The figure shown</p>	<p>steilte padreserwe voor van 'n gedeelte represents the road reserve of a portion van Nasionale Roete N8 of National Route</p>	<p>Vel van Sheet 4 of 9 Plan P1234/23</p>
---	---	--	---



Die Suid Afrikaanse Nasionale Padagentskap MSB Bpk The South African National Roads Agency SOC Ltd	Die figuur getoon The figure shown	 steldie padreserwe voor van 'n gedeelte represents the road reserve of a portion van Nasionale Roete N8 of National Route	Vel Sheet 5 of 9 Plan P1234/23
---	---------------------------------------	--	-----------------------------------





<p>Die Suid Afrikaanse Nasionale Padagentskap MSB Bpk The South African National Roads Agency SOC Ltd</p>	<p>Die figuur getoon The figure shown</p>		<p>steldie padreserwe voor van 'n gedeelte represents the road reserve of a portion van Nasionale Roete N8 of National Route</p>	<p>Vel Sheet 7 of 9 Plan P1234/23</p>
---	---	---	--	---

PADRESERWE KOÖRDINATE / ROAD RESERVE CO-ORDINATES						
LINKERKANT/LEFT HAND SIDE				REGTERKANT/RIGHT HAND SIDE		
	Y	X	WG 27°		Y	X
L1	-32 800.69	3 234	896.61	R1	-32 747.04	3 234 972.76
L2	-33 511.48	3 235	087.38	R2	-33 568.54	3 235 214.51
L3	-33 624.92	3 235	088.05	R3	-33 604.93	3 235 241.01
L4	-33 769.15	3 235	039.88	R4	-33 602.88	3 235 271.55
L5	-33 860.62	3 235	050.35	R5	-33 578.83	3 235 331.39
L6	-33 949.80	3 235	124.83	R6	-33 326.17	3 235 660.46
L7	-33 963.58	3 235	183.24	R7	-33 349.88	3 235 680.83
L8	-33 956.68	3 235	222.14	R8	-33 638.06	3 235 382.26
L9	-34 412.50	3 235	357.00	R9	-33 735.81	3 235 418.79
L10	-34 632.10	3 235	461.61	R10	-33 812.97	3 235 397.32
L11	-34 701.24	3 235	509.80	R11	-33 920.85	3 235 344.58
L12	-35 856.06	3 236	178.45	R12	-33 998.49	3 235 334.75
L13	-36 271.60	3 236	419.06	R13	-34 303.72	3 235 431.97
L14	-36 706.47	3 236	650.47	R14	-34 564.63	3 235 539.58
L15	-36 786.13	3 236	662.89	R15	-34 732.87	3 235 622.80
L16	-36 806.26	3 236	674.26	R16	-34 787.28	3 235 654.30
L17	-36 855.47	3 236	737.47	R17	-35 431.25	3 236 042.59
L18	-37 528.80	3 237	147.76	R18	-35 794.97	3 236 248.67
L19	-37 868.90	3 237	284.31	R19	-36 109.99	3 236 427.16
L20	-38 128.00	3 237	354.08	R20	-36 671.80	3 236 745.47
L21	-38 726.96	3 237	515.39	R21	-36 689.27	3 236 763.87
L22	-38 860.59	3 237	581.24	R22	-36 735.90	3 236 813.00
L23	-38 878.97	3 237	558.35	R23	-36 702.03	3 236 952.78
L24	-38 850.91	3 237	508.50	R24	-36 704.02	3 236 954.55
L25	-38 877.06	3 237	493.79	R25	-36 722.61	3 236 971.24
L26	-38 912.11	3 237	556.19	R26	-36 740.10	3 236 903.81
L27	-38 907.57	3 237	612.01	R27	-36 768.09	3 236 865.25
L28	-39 019.22	3 237	687.48	R28	-36 939.95	3 236 919.16
L29	-39 153.23	3 237	837.98	R29	-37 003.19	3 236 968.11
L30	-39 227.58	3 237	955.59	R30	-37 340.51	3 237 200.89
L31	-39 469.57	3 238	498.65	R31	-37 438.12	3 237 269.03
L32	-39 477.44	3 238	516.32	R32	-38 097.72	3 237 433.34
L33	-39 639.57	3 238	704.73	R33	-38 639.36	3 237 583.12
L34	-39 785.57	3 238	796.03	R34	-38 686.27	3 237 600.00
L35	-40 426.53	3 238	960.70	R35	-38 721.60	3 237 619.85
L36	-40 687.53	3 239	027.75	R36	-38 764.75	3 237 650.13
L37	-41 281.09	3 239	272.73	R37	-38 806.42	3 237 689.34
L38	-41 360.67	3 239	285.12	R38	-38 841.76	3 237 738.98
L39	-41 404.53	3 239	302.69	R39	-38 881.88	3 237 715.22
L40	-41 470.13	3 239	348.48	R40	-38 921.65	3 237 727.14
L41	-41 868.25	3 239	508.00	R41	-39 077.98	3 237 876.93
L42	-41 977.64	3 239	594.93	R42	-39 186.72	3 238 061.14
L43	-42 205.65	3 239	686.29	R43	-39 401.18	3 238 554.76
L44	-42 173.83	3 239	004.66	R44	-39 410.76	3 238 576.80
L45	-42 160.99	3 238	944.07	R45	-39 558.27	3 238 753.29
L46	-42 150.69	3 238	938.01	R46	-39 672.43	3 238 826.89
L47	-42 091.51	3 238	956.83	R47	-39 769.05	3 238 889.19
L48	-42 080.44	3 238	934.57	R48	-40 525.64	3 239 070.94
L49	-42 175.87	3 238	882.58	R49	-41 157.60	3 239 309.44
L50	-42 165.93	3 238	748.57	R50	-41 213.89	3 239 352.29
L51	-42 200.41	3 238	783.13	R51	-41 013.86	3 239 437.60

Vel	8	Van	9	P1234/23
Sheet		of		

PADRESERWE KOÖRDINATE / ROAD RESERVE CO-ORDINATES						
LINKERKANT/LEFT HAND SIDE			REGTERKANT/RIGHT HAND SIDE			
	Y	X	WG 27°		Y	X
L52	-42 277.37	3 238	860.30	R52	-40 988.91	3 239 444.16
L53	-42 248.71	3 238	884.21	R53	-40 995.90	3 239 472.96
L54	-42 239.49	3 238	899.35	R54	-41 151.59	3 239 431.59
L55	-42 233.09	3 238	968.08	R55	-41 262.66	3 239 376.94
L56	-42 239.98	3 239	099.40	R56	-41 373.92	3 239 396.11
L57	-42 332.47	3 239	619.87	R57	-41 715.36	3 239 532.95
L58	-42 326.15	3 239	733.83	R58	-41 826.44	3 239 587.92
L59	-42 359.11	3 239	746.65	R59	-41 930.95	3 239 660.02
L60	-42 329.07	3 239	784.69	R60	-42 022.30	3 239 744.93
L61	-42 388.37	3 241	024.74	R61	-42 153.71	3 239 948.24
L62	-42 439.86	3 241	260.35	R62	-42 100.93	3 240 032.74
L63	-42 569.89	3 241	570.25	R63	-42 095.60	3 240 080.50
L64	-42 628.99	3 241	673.80	R64	-42 090.72	3 240 124.27
L65	-42 679.89	3 241	629.03	R65	-42 122.82	3 240 196.65
L66	-43 215.19	3 242	100.88	R66	-42 222.09	3 240 309.23
L67	-43 267.33	3 242	137.98	R67	-42 262.51	3 240 401.01
L68	-43 326.43	3 242	233.20	R68	-42 308.79	3 241 033.39
L69	-43 374.47	3 242	267.30	R69	-42 348.51	3 241 275.52
L70	-43 457.89	3 242	299.37	R70	-42 548.55	3 241 638.09
L71	-43 568.49	3 242	304.30	R71	-42 573.54	3 241 684.34
L72	-43 666.60	3 242	293.09	R72	-42 575.64	3 241 688.14
L73	-43 742.20	3 242	300.14	R73	-42 594.94	3 241 710.67
L74	-43 793.25	3 242	280.41	R74	-42 644.79	3 241 773.41
L75	-43 759.06	3 242	332.50	R75	-42 705.20	3 241 830.72
L76	-43 742.26	3 242	358.11	R76	-43 262.10	3 242 254.09
L77	-43 717.81	3 242	367.43	R77	-43 310.41	3 242 289.61
L78	-43 702.54	3 242	374.37	R78	-43 328.28	3 242 302.75
				R79	-43 411.00	3 242 344.10
				R80	-43 670.50	3 242 386.14
				R81	-43 680.39	3 242 387.09

Vel Sheet	g	Van of	g	P1234/23
--------------	---	-----------	---	----------