

---

**GOVERNMENT NOTICES • GOEWERMENTSKENNISGEWINGS**

---

**DEPARTMENT OF TRANSPORT**

NO. 4184

11 December 2023

**THE SOUTH AFRICAN NATIONAL ROADS  
AGENCY SOC LIMITED**Registration No: 1998/009584/30

---

**REPEAL OF DECLARATION No. 931 OF 2021 AND RE-DECLARATION OF NATIONAL ROAD R529  
SECTION 2: LETSITELE TO GIYANI**

By virtue of section 40(1)(b) of the South African National Roads Agency Limited and the National Roads Act 1998 (Act No. 7 of 1998), I hereby repeal Declaration No. 931 of 2021, and by virtue of section 40(1)(a) of the said Act, I hereby declare the route, as indicated on the subjoining Plan P1132/19, sheets 1 to 18, as a National Road.

**(National Road R529 Section 2: Letsitele – Giyani)**

---

**MINISTER OF TRANSPORT**

DEPARTEMENT VAN VERVOER

NO. 4184

11 Desember 2023

**DIE SUID-AFRIKAANSE NASIONALE  
PADAGENTSKAP MSB BEPERK**

Registrasie No: 1998/009584/30

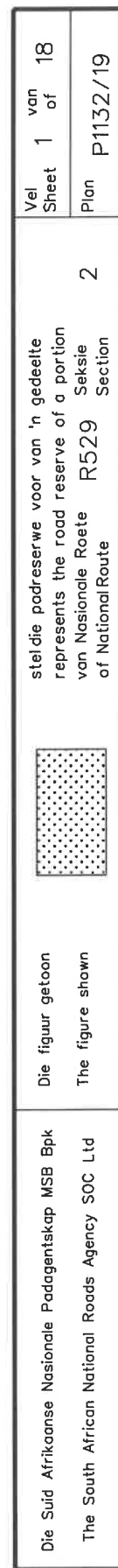
**INTREKKING VAN VERKLARING No. 931 VAN 2021 EN HERVERKLARING VAN NASIONALE PAD  
R529 SEKSIE 2: LETSITELE TOT GIYANI**

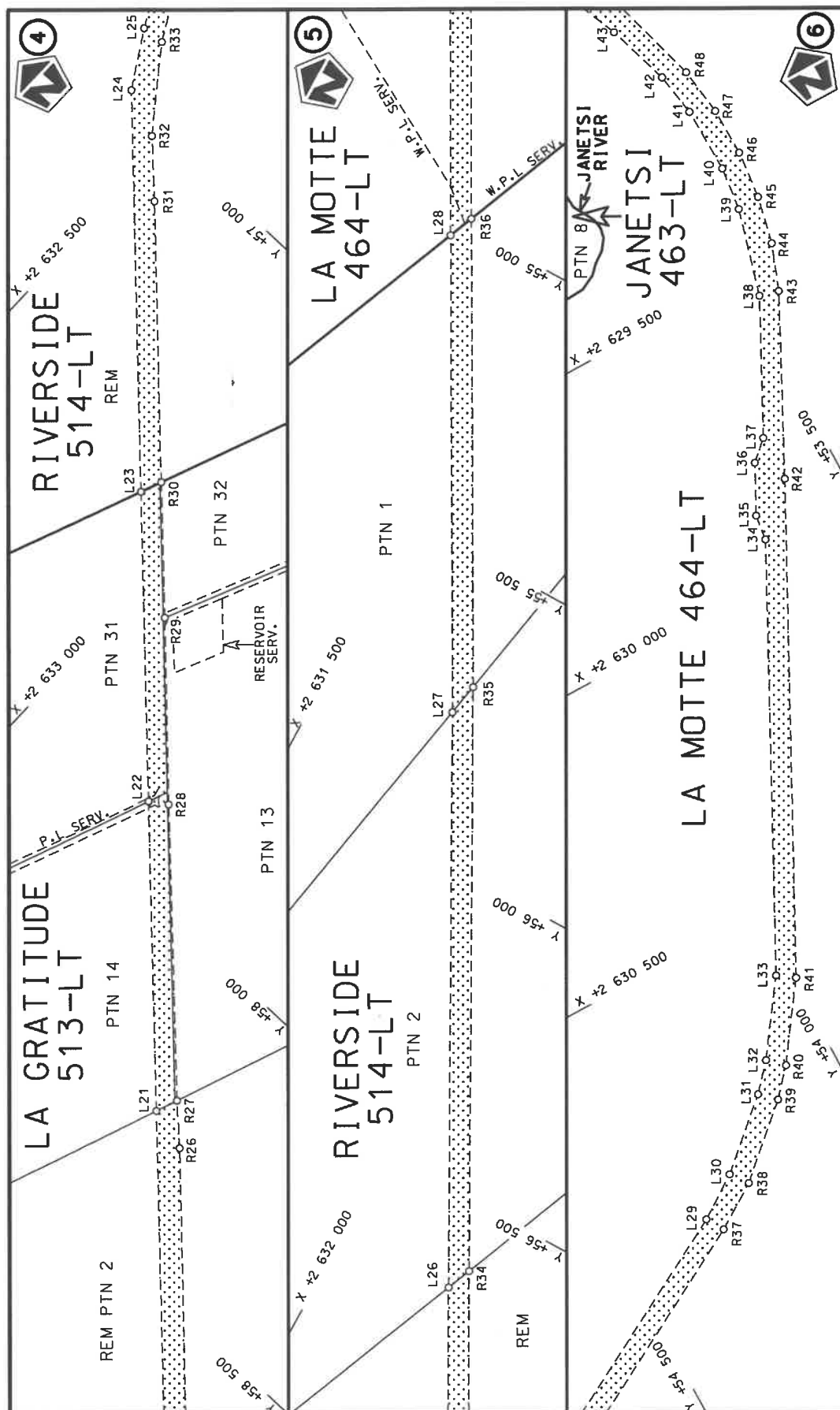
Kragtens Artikel 40(1)(b) van die Suid-Afrikaanse Nasionale Padagentskap Beperk en Nasionale Paaie Wet 1998 (Wet No. 7 van 1998), trek ek hiermee Verklaring No. 931 van 2021 in, en kragtens Artikel 40(1)(a) van genoemde Wet verklaar ek hiermee die roete soos aangetoon op meegaande Plan P1132/19, velle 1 tot 18, as 'n Nasionale Pad.

**(Nasionale Pad R529 Seksie 2: Letsitele – Giyani)**



**MINISTER VAN VERVOER**



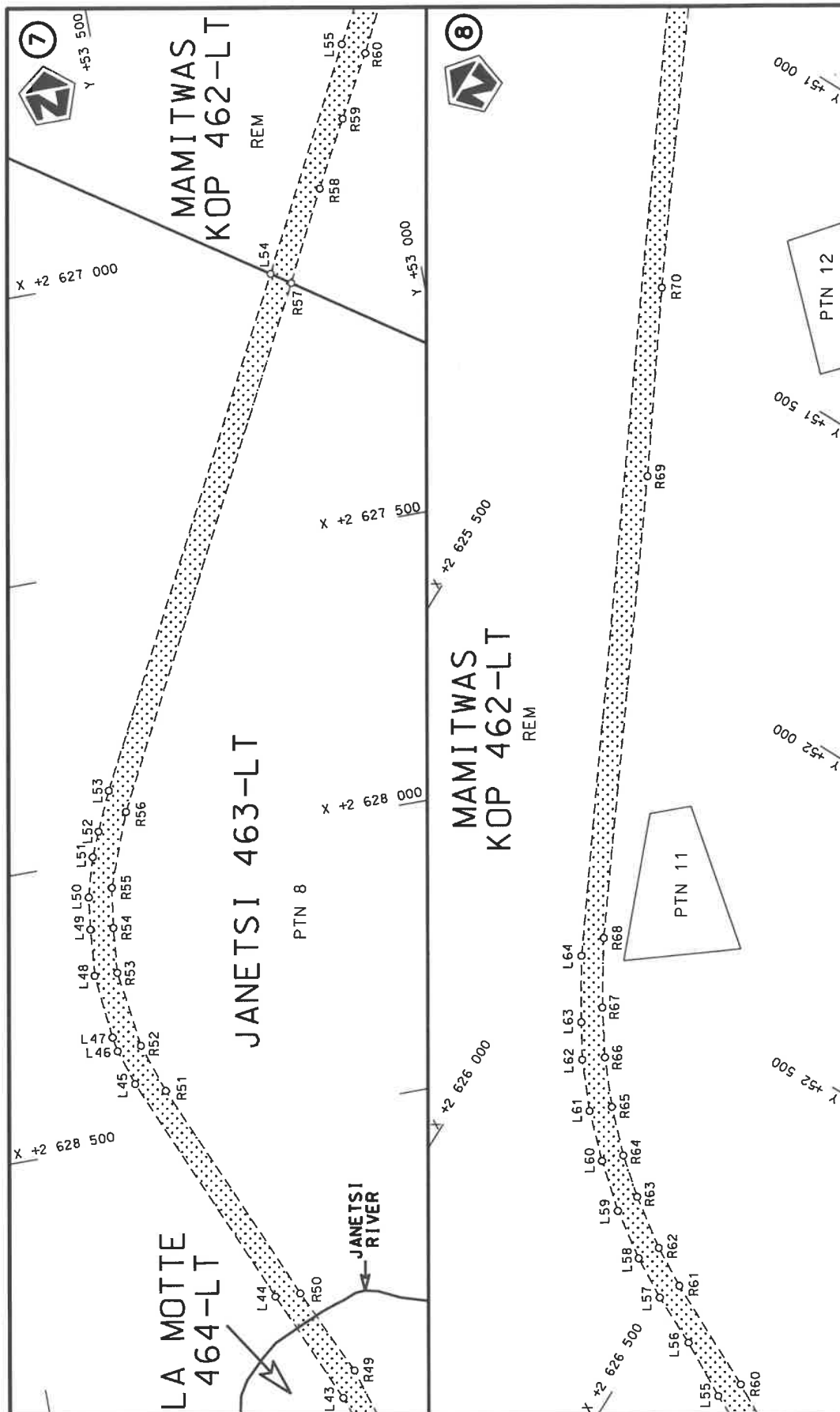


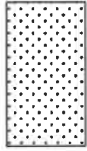
Die Suid Afrikaanse Nasionale Padagentskap MSB Bpk  
The South African National Roads Agency SOC Ltd

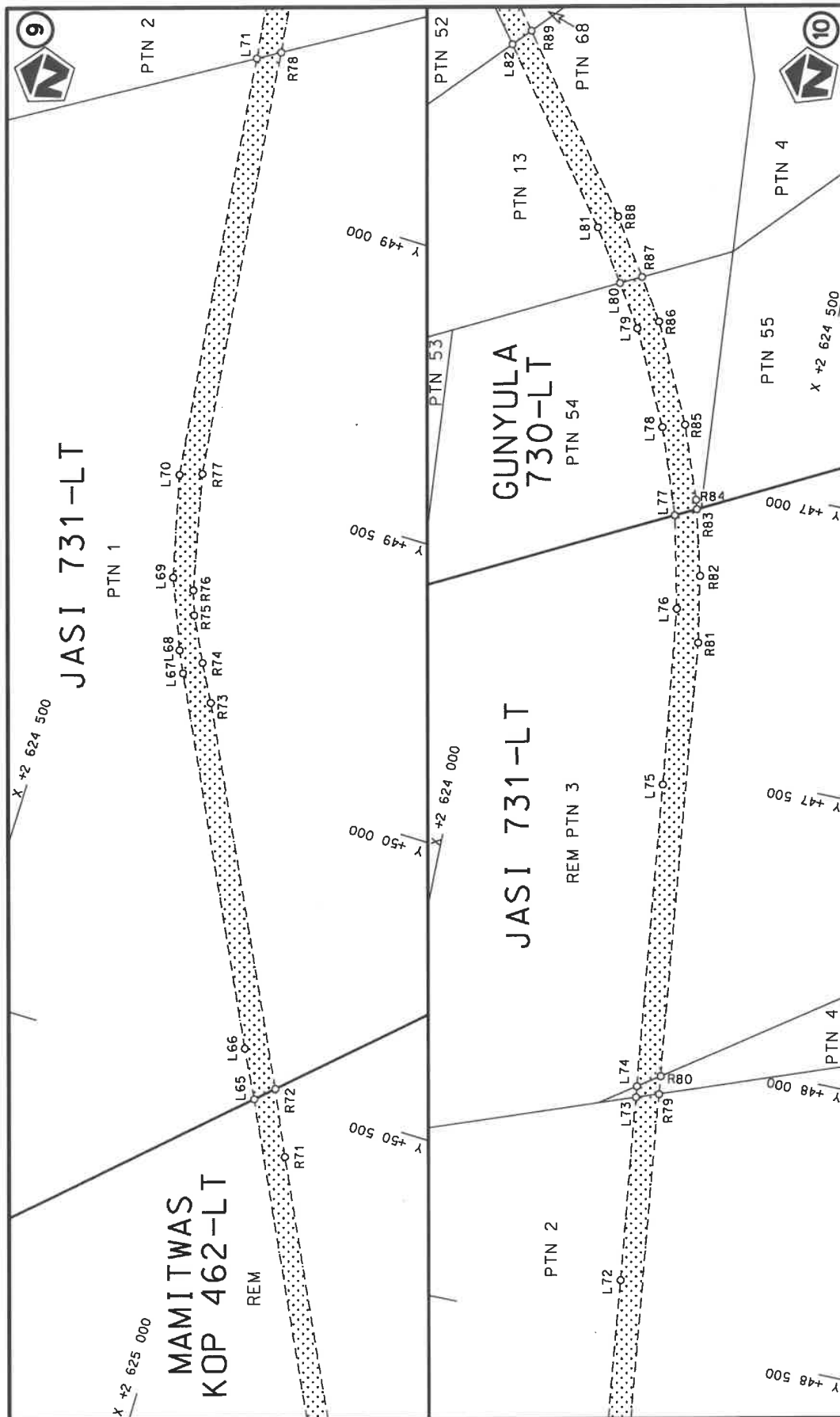
Die figuur getoon  
The figure shown

stelt die padreserwe voor van 'n gedeelte  
represents the road reserve of a portion  
van Nasionale Roete R529 Saksie  
of National Route Section

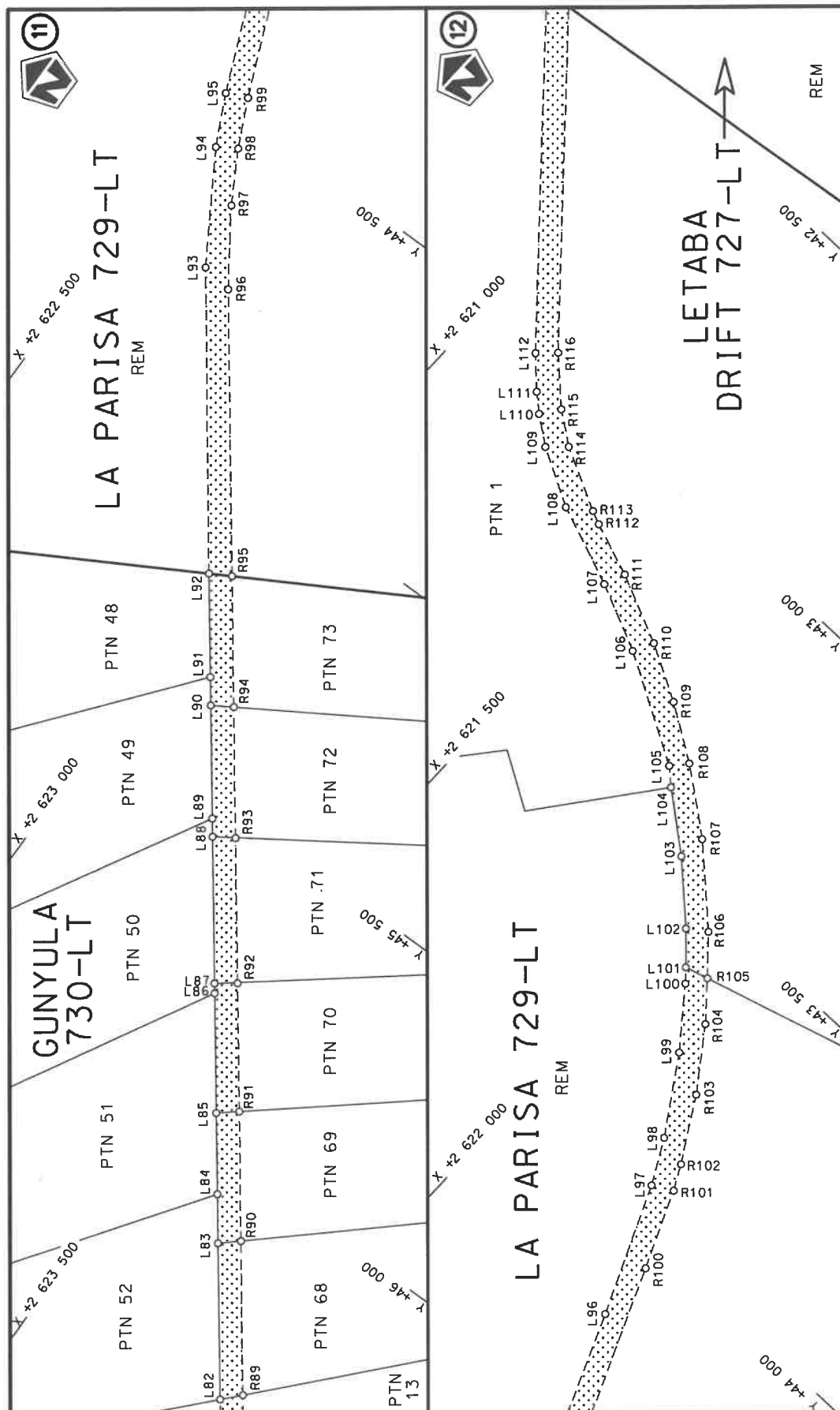
Vel  
Sheet 2 of 18  
Plan P1132/19



Die Suid Afrikaanse Nasionale Padagentskap MSB Bpk The South African National Roads Agency SOC Ltd	Die figuur getoon The figure shown		steldie padreserwe voor van 'n gedeelte represents the road reserve of a portion van Nasionale Roete R529 Seksie of National Route of National Route	Vel Sheet 3 of 18	Plan P1132/19
---	---------------------------------------	---	---	----------------------	------------------

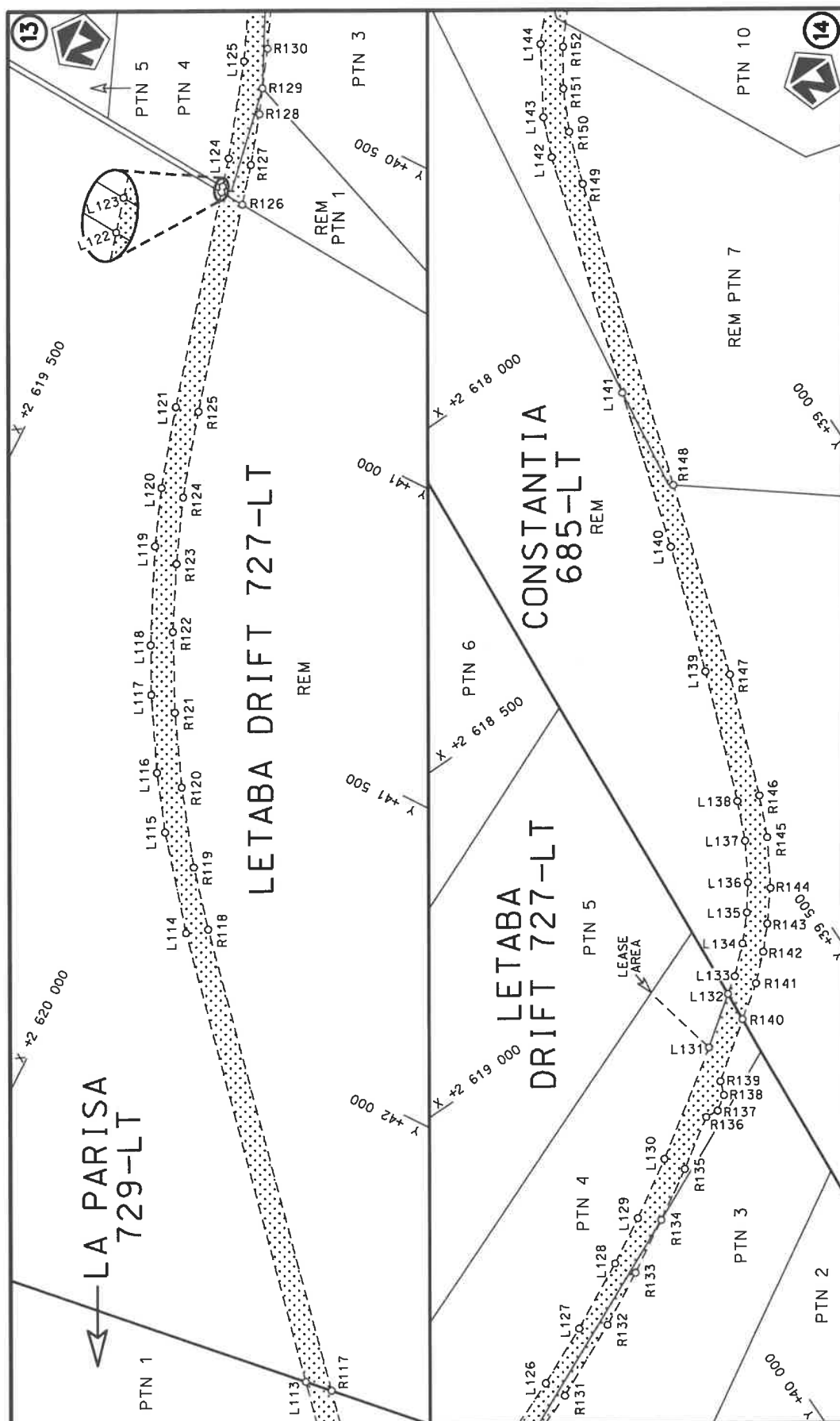


Die Suid Afrikaanse Nasionale Padogentskap MSB Bpk The South African National Roads Agency SOC Ltd	Die figuur getoon The figure shown		steldie padreserwe voor van 'n gedeelte represents the road reserve of a portion van Nasionale Roete R529 Sektie of National Route of National Route	Vel Sheet 4 of 18	Plan P1132/19
---	---------------------------------------	---	---	----------------------	------------------



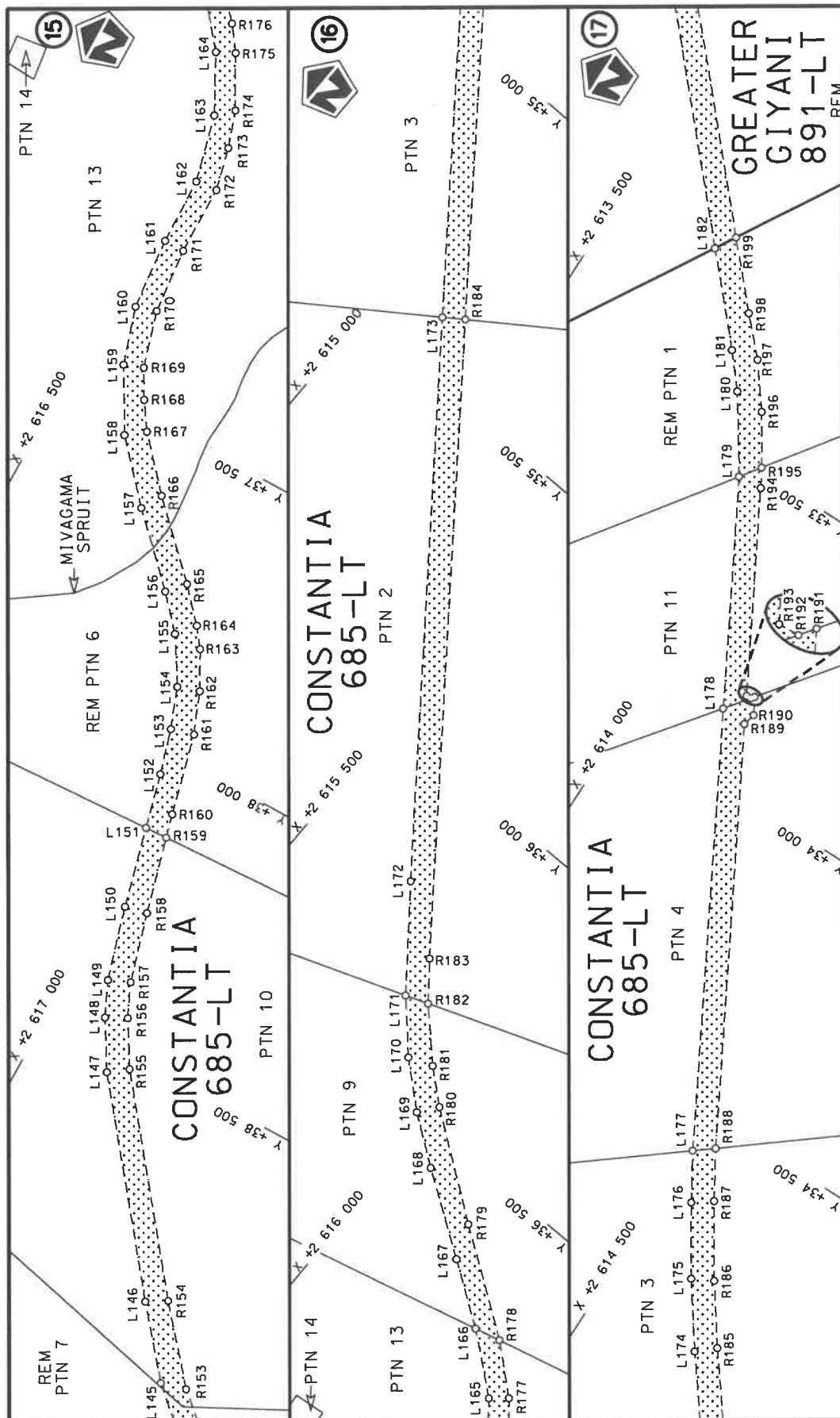
Die Suid Afrikaanse Nasionale Padagentskap MSB Bpk The South African National Roads Agency SOC Ltd	Die figuur getoon The figure shown	steldie podreserwe voor van 'n gedeelte represents the road reserve of a portion van Nasionale Roete R529 Sektie of National Route Section	Val Sheet 5 of 18
		Plan P1132/19	



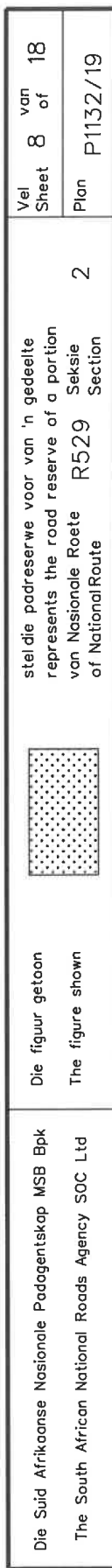


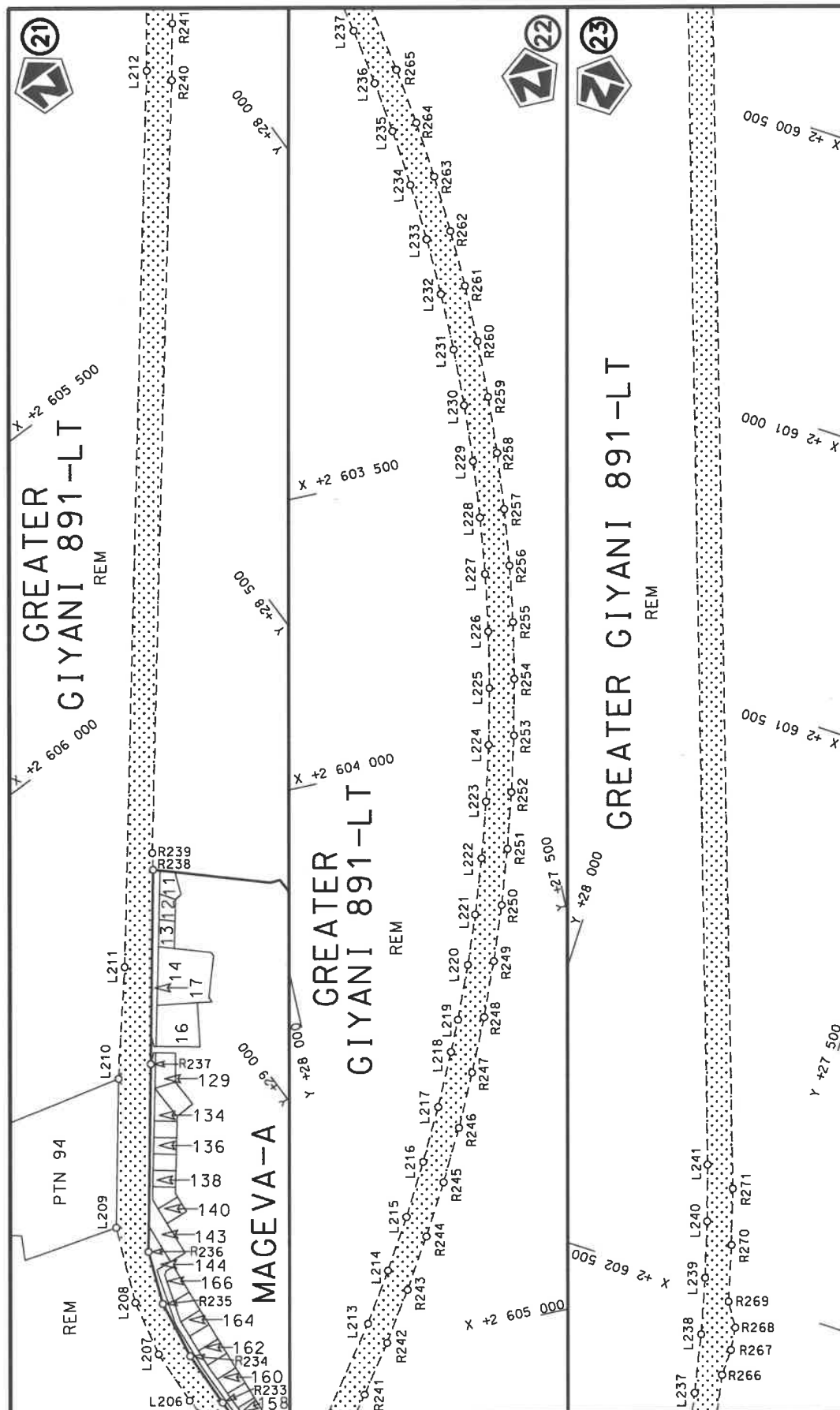
Die Suid Afrikaanse Nasionale Padagentskap MSB Bpk The South African National Roads Agency SOC Ltd	Die figuur getoon The figure shown	steldie padreserwe voor van 'n gedeelte represents the road reserve of a portion van Nasionale Roete R529 of National Route	Vel Sheet 6 of 18	Plan P1132/19
---	---------------------------------------	--	----------------------	------------------



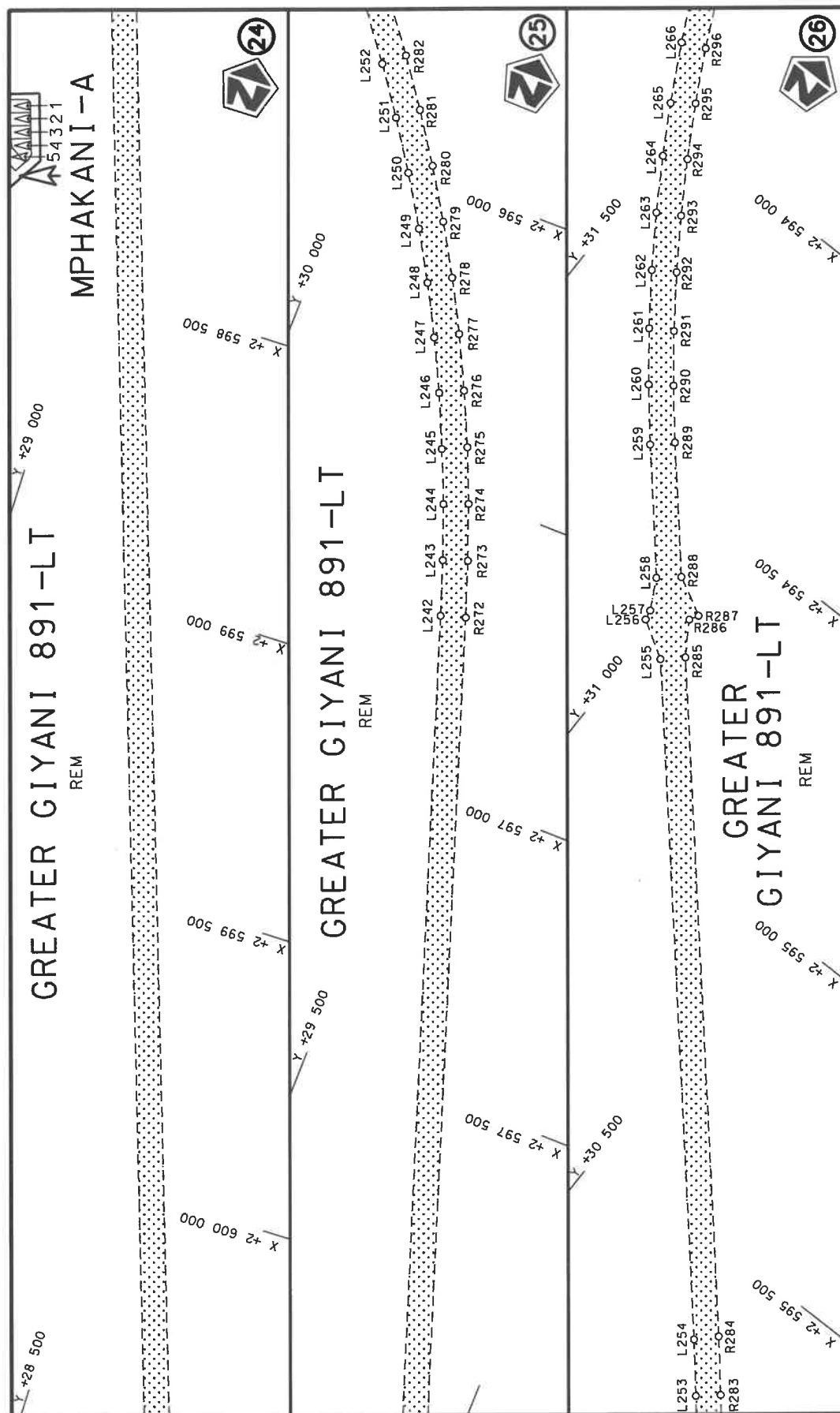


Die Suid Afrikaanse Nasionale Padagentskap MSB Bpk The South African National Roads Agency SOC Ltd	Die figuur getoon The figure shown	steldie padreserwe voor van 'n gedeelte represents the road reserve of a portion van Nasionale Roete R529 of National Route Section	Val Sheet 7 of 18 Plan P1132/19
---	---------------------------------------	--	---------------------------------------

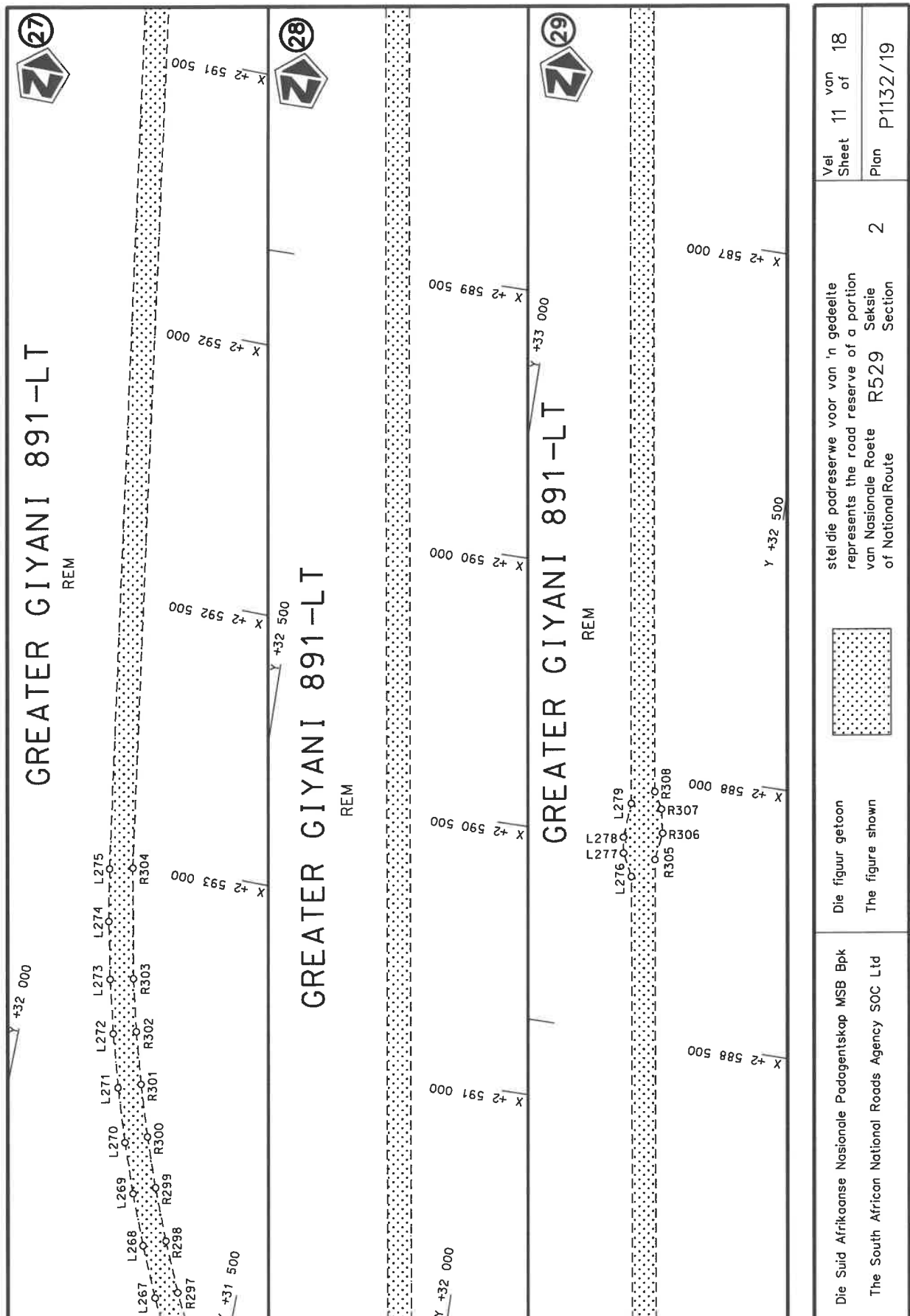


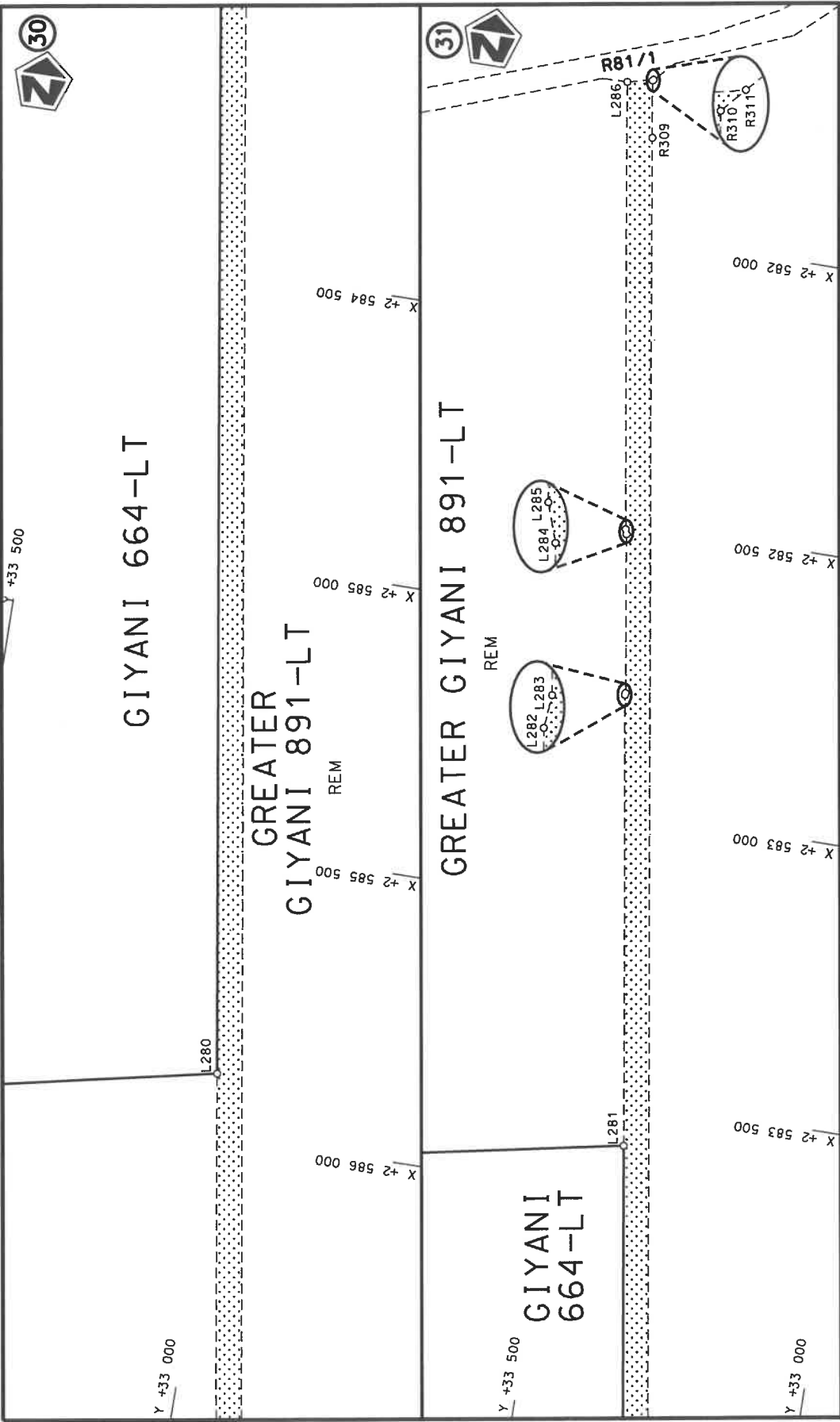



Die Suid Afrikaanse Nasionale Padagentskap MSB Bpk The South African National Roads Agency SOC Ltd	Die figuur getoon The figure shown	steldie padreserwe voor van 'n gedeelte represents the road reserve of a portion van Nasionale Roete R529 of National Route of National Route	Vel Sheet 9 of 18	Plan P1132/19
---	---------------------------------------	--	----------------------	---------------



Vel Sheet 10 of 18	stelt die padreserwe voor van 'n gedeelte represents the road reserve of a portion van Nasionale Roete R529 Sektie of National Route Section	Die figuur getoon The figure shown	Die Suid Afrikaanse Nasionale Padagentskap MSB Bpk The South African National Roads Agency SOC Ltd
Plan P1132/19	2		





Die Suid Afrikaanse Nasionale Padagentskap MSB Bpk The South African National Roads Agency SOC Ltd	Die figuur getoon The figure shown		steldie padreserwe voor van 'n gedeelte represents the road reserve of a portion van Nasionale Roete R529 Sektie of National Route Section	2	Vel Sheet	12 of 18
				Plan	P1132/19	



PADRESERWE KOÖRDINATE / ROAD RESERVE CO-ORDINATES						
LINKERKANT/LEFT HAND SIDE				REGTERKANT/RIGHT HAND SIDE		
	Y	X	WG 31 <sup>o</sup>		Y	X
L1	62 906.14	2 639 785.18		R1	62 892.99	2 639 815.72
L2	62 081.79	2 639 084.56		R2	62 892.13	2 639 821.92
L3	61 741.48	2 638 769.79		R3	62 668.79	2 639 631.57
L4	61 650.12	2 638 653.42		R4	62 366.22	2 639 373.70
L5	61 591.42	2 638 559.62		R5	62 232.88	2 639 256.45
L6	61 163.01	2 637 683.61		R6	62 078.47	2 639 120.68
L7	61 092.50	2 637 538.81		R7	61 768.85	2 638 848.42
L8	60 886.48	2 636 943.00		R8	61 645.62	2 638 725.04
L9	60 735.22	2 636 503.93		R9	61 562.99	2 638 582.38
L10	60 692.44	2 636 395.60		R10	61 135.50	2 637 710.01
L11	60 658.07	2 636 321.42		R11	61 072.63	2 637 581.04
L12	60 476.88	2 635 930.34		R12	61 015.36	2 637 428.34
L13	60 431.93	2 635 833.33		R13	60 858.27	2 636 972.66
L14	60 393.44	2 635 764.76		R14	60 700.88	2 636 519.98
L15	60 347.89	2 635 700.75		R15	60 627.34	2 636 342.79
L16	60 296.02	2 635 641.63		R16	60 446.82	2 635 952.77
L17	60 258.80	2 635 605.12		R17	60 387.42	2 635 828.30
L18	59 988.80	2 635 340.29		R18	60 344.05	2 635 756.52
L19	59 043.90	2 634 413.47		R19	60 304.31	2 635 695.18
L20	58 748.61	2 634 123.83		R20	60 250.92	2 635 649.73
L21	58 266.98	2 633 651.41		R21	59 955.13	2 635 358.74
L22	57 876.77	2 633 268.67		R22	59 412.95	2 634 827.90
L23	57 486.78	2 632 886.14		R23	59 008.01	2 634 431.41
L24	56 981.30	2 632 390.33		R24	58 966.52	2 634 389.09
L25	56 886.03	2 632 332.35		R25	58 707.91	2 634 136.99
L26	56 654.66	2 632 206.46		R26	58 286.30	2 633 725.98
L27	55 761.98	2 631 722.28		R27	58 228.99	2 633 665.69
L28	55 027.24	2 631 313.22		R28	57 856.56	2 633 298.32
L29	54 337.46	2 630 930.08		R29	57 620.28	2 633 068.72
L30	54 263.77	2 630 879.50		R30	57 449.70	2 632 901.01
L31	54 152.42	2 630 779.45		R31	57 095.87	2 632 554.08
L32	54 111.46	2 630 733.08		R32	57 015.15	2 632 472.22
L33	54 024.71	2 630 609.95		R33	56 881.90	2 632 371.85
L34	53 676.08	2 629 924.17		R34	56 612.14	2 632 224.00
L35	53 670.46	2 629 879.43		R35	55 705.78	2 631 732.71
L36	53 628.40	2 629 796.23		R36	54 984.21	2 631 330.98
L37	53 594.70	2 629 764.83		R37	54 319.09	2 630 960.17
L38	53 481.73	2 629 540.91		R38	54 241.46	2 630 909.30
L39	53 441.51	2 629 388.81		R39	54 125.88	2 630 804.39
L40	53 433.23	2 629 311.92		R40	54 084.74	2 630 757.89
L41	53 437.16	2 629 196.45		R41	53 995.86	2 630 630.31
L42	53 450.65	2 629 120.29		R42	53 595.39	2 629 846.24
L43	53 487.41	2 629 009.53		R43	53 447.82	2 629 549.76
L44	53 574.27	2 628 812.20		R44	53 419.00	2 629 469.72
L45	53 749.23	2 628 399.74		R45	53 401.41	2 629 386.40
L46	53 768.72	2 628 337.40		R46	53 393.84	2 629 301.59
L47	53 773.30	2 628 312.15		R47	53 396.39	2 629 216.47
L48	53 784.87	2 628 199.71		R48	53 409.03	2 629 132.26
L49	53 777.45	2 628 117.99		R49	53 459.10	2 628 965.40
L50	53 770.22	2 628 061.93		R50	53 529.82	2 628 814.70
L51	53 750.89	2 627 993.19		R51	53 698.38	2 628 421.17
				Vel Sheet 13	Van of 18	P1132/19



PADRESERWE KOÖRDINATE / ROAD RESERVE CO-ORDINATES									
LINKERKANT/LEFT HAND SIDE					REGTERKANT/RIGHT HAND SIDE				
	Y		X	WG 31°		Y		X	
L52	53 733.06	2	627 950.88		R52	53 727.21	2	628 335.18	
L53	53 702.49	2	627 883.26		R53	53 744.92	2	628 201.24	
L54	53 263.46	2	627 039.25		R54	53 737.69	2	628 122.36	
L55	53 068.18	2	626 663.83		R55	53 727.72	2	628 052.28	
L56	53 015.81	2	626 569.56		R56	53 679.62	2	627 925.23	
L57	52 974.58	2	626 484.52		R57	53 230.24	2	627 061.85	
L58	52 935.51	2	626 416.88		R58	53 150.94	2	626 906.76	
L59	52 883.29	2	626 341.70		R59	53 089.60	2	626 793.11	
L60	52 822.92	2	626 271.74		R60	53 030.31	2	626 686.79	
L61	52 759.71	2	626 206.87		R61	52 939.13	2	626 503.04	
L62	52 689.36	2	626 148.31		R62	52 901.25	2	626 437.24	
L63	52 633.97	2	626 112.34		R63	52 844.39	2	626 357.71	
L64	52 534.34	2	626 051.26		R64	52 795.04	2	626 298.54	
L65	50 520.04	2	625 044.25		R65	52 732.77	2	626 236.44	
L66	50 439.17	2	625 002.46		R66	52 665.18	2	626 180.18	
L67	49 841.40	2	624 704.90		R67	52 592.81	2	626 130.21	
L68	49 804.69	2	624 687.00		R68	52 487.30	2	626 068.12	
L69	49 685.76	2	624 638.44		R69	51 755.31	2	625 706.50	
L70	49 510.46	2	624 595.94		R70	51 460.19	2	625 553.24	
L71	48 773.86	2	624 508.36		R71	50 600.33	2	625 125.94	
L72	48 417.02	2	624 467.52		R72	50 491.82	2	625 074.41	
L73	48 097.71	2	624 428.94		R73	49 876.82	2	624 766.74	
L74	48 078.44	2	624 426.62		R74	49 813.94	2	624 732.10	
L75	47 549.57	2	624 364.44		R75	49 738.43	2	624 693.35	
L76	47 242.56	2	624 326.08		R76	49 697.03	2	624 678.95	
L77	47 083.18	2	624 289.19		R77	49 497.19	2	624 634.06	
L78	46 935.65	2	624 237.11		R78	48 751.24	2	624 546.07	
L79	46 774.82	2	624 159.22		R79	48 084.27	2	624 467.36	
L80	46 703.36	2	624 112.86		R80	48 052.76	2	624 463.68	
L81	46 615.17	2	624 055.67		R81	47 293.37	2	624 375.01	
L82	46 330.89	2	623 842.29		R82	47 177.98	2	624 354.49	
L83	46 110.27	2	623 676.87		R83	47 064.90	2	624 324.86	
L84	46 040.97	2	623 624.92		R84	47 049.01	2	624 320.39	
L85	45 926.24	2	623 538.87		R85	46 923.41	2	624 275.32	
L86	45 757.25	2	623 412.17		R86	46 755.42	2	624 194.03	
L87	45 743.37	2	623 401.75		R87	46 685.14	2	624 148.43	
L88	45 536.23	2	623 246.43		R88	46 589.46	2	624 086.36	
L89	45 510.47	2	623 227.13		R89	46 300.95	2	623 870.37	
L90	45 350.93	2	623 107.49		R90	46 083.21	2	623 707.35	
L91	45 311.01	2	623 077.58		R91	45 900.24	2	623 570.37	
L92	45 165.01	2	622 968.10		R92	45 719.22	2	623 434.52	
L93	44 732.78	2	622 645.55		R93	45 514.16	2	623 280.62	
L94	44 551.11	2	622 534.78		R94	45 329.52	2	623 142.05	
L95	44 464.48	2	622 492.72		R95	45 144.89	2	623 003.48	
L96	44 144.13	2	622 360.05		R96	44 740.76	2	622 700.18	
L97	43 922.74	2	622 264.60		R97	44 618.14	2	622 617.67	
L98	43 846.36	2	622 223.47		R98	44 530.35	2	622 568.23	
L99	43 718.54	2	622 139.94		R99	44 448.23	2	622 529.52	
L100	43 622.58	2	622 064.72		R100	44 036.60	2	622 357.02	
L101	43 601.50	2	622 046.56		R101	43 903.03	2	622 299.54	
L102	43 551.32	2	621 999.80		R102	43 860.06	2	622 276.98	
					Vel 14 Van 18 Sheet of P1132/19				

PADRESERWE KOÖRDINATE / ROAD RESERVE CO-ORDINATES									
LINKERKANT/LEFT HAND SIDE					REGTERKANT/RIGHT HAND SIDE				
	Y		X	WG 31 <sup>o</sup>		Y		X	
L103	43 464.04	2	621 906.62		R103	43 752.21	2	622 212.93	
L104	43 387.86	2	621 810.18		R104	43 650.44	2	622 139.60	
L105	43 362.23	2	621 781.42		R105	43 589.44	2	622 087.88	
L106	43 258.57	2	621 595.80		R106	43 528.08	2	622 032.35	
L107	43 207.13	2	621 478.57		R107	43 416.55	2	621 912.45	
L108	43 154.51	2	621 336.38		R108	43 334.83	2	621 804.36	
L109	43 101.72	2	621 237.26		R109	43 274.97	2	621 709.91	
L110	43 066.87	2	621 189.39		R110	43 223.25	2	621 613.61	
L111	43 041.53	2	621 159.72		R111	43 170.02	2	621 493.22	
L112	42 993.38	2	621 111.65		R112	43 136.82	2	621 399.19	
L113	42 516.16	2	620 689.31		R113	43 126.98	2	621 375.71	
L114	41 904.94	2	620 148.37		R114	43 073.55	2	621 267.31	
L115	41 763.56	2	620 036.25		R115	43 034.38	2	621 212.62	
L116	41 676.48	2	619 976.68		R116	42 965.62	2	621 140.20	
L117	41 559.04	2	619 906.47		R117	42 509.79	2	620 736.76	
L118	41 481.64	2	619 866.41		R118	41 881.86	2	620 180.19	
L119	41 323.48	2	619 795.60		R119	41 795.80	2	620 109.01	
L120	41 226.89	2	619 759.76		R120	41 680.10	2	620 027.00	
L121	41 089.32	2	619 718.71		R121	41 568.44	2	619 957.37	
L122	40 718.31	2	619 621.15		R122	41 443.65	2	619 890.80	
L123	40 708.31	2	619 618.53		R123	41 334.26	2	619 843.00	
L124	40 659.04	2	619 605.57		R124	41 224.70	2	619 801.33	
L125	40 495.13	2	619 552.83		R125	41 078.61	2	619 757.94	
L126	40 363.44	2	619 498.85		R126	40 721.28	2	619 663.44	
L127	40 261.19	2	619 452.57		R127	40 651.96	2	619 645.10	
L128	40 145.23	2	619 393.74		R128	40 566.50	2	619 618.99	
L129	40 067.95	2	619 350.44		R129	40 523.73	2	619 603.06	
L130	39 971.09	2	619 290.85		R130	40 457.85	2	619 579.87	
L131	39 796.63	2	619 174.92		R131	40 348.33	2	619 535.68	
L132	39 716.12	2	619 116.58		R132	40 216.78	2	619 475.10	
L133	39 688.51	2	619 096.46		R133	40 125.79	2	619 428.73	
L134	39 644.74	2	619 056.81		R134	40 036.39	2	619 377.53	
L135	39 607.68	2	619 016.33		R135	39 951.53	2	619 325.50	
L136	39 576.53	2	618 973.78		R136	39 869.08	2	619 271.79	
L137	39 539.45	2	618 910.67		R137	39 846.16	2	619 273.92	
L138	39 511.27	2	618 845.80		R138	39 821.56	2	619 257.51	
L139	39 429.39	2	618 625.81		R139	39 813.10	2	619 234.16	
L140	39 356.65	2	618 411.01		R140	39 719.98	2	619 167.73	
L141	39 274.28	2	618 141.53		R141	39 664.30	2	619 128.00	
L142	39 143.49	2	617 730.08		R142	39 622.52	2	619 089.54	
L143	39 116.08	2	617 663.95		R143	39 588.89	2	619 052.84	
L144	39 048.36	2	617 555.09		R144	39 548.84	2	619 004.24	
L145	38 980.83	2	617 481.47		R145	39 503.59	2	618 927.62	
L146	38 867.04	2	617 389.76		R146	39 473.67	2	618 859.46	
L147	38 543.90	2	617 139.71		R147	39 396.96	2	618 654.86	
L148	38 460.98	2	617 091.36		R148	39 292.20	2	618 325.08	
L149	38 400.76	2	617 064.69		R149	39 125.15	2	617 799.22	
L150	38 273.49	2	617 029.85		R150	39 093.41	2	617 710.40	
L151	38 134.98	2	616 996.82		R151	39 059.27	2	617 642.29	
L152	38 039.63	2	616 974.08		R152	39 018.61	2	617 581.29	
L153	37 961.33	2	616 952.78		R153	38 969.02	2	617 525.14	
					<div> <div>Vel</div> <div>Sheet</div> </div> <div>15</div> <div> <div>Van</div> <div>of</div> </div> <div>18</div> <div>P1132/19</div>				

PADRESERWE KOÖRDINATE / ROAD RESERVE CO-ORDINATES							
LINKERKANT/LEFT HAND SIDE				REGTERKANT/RIGHT HAND SIDE			
	Y	X	WG 31 <sup>a</sup>		Y	X	
L154	37 891.03	2 616 927.38		R154	38 847.03	2 617 424.19	
L155	37 811.11	2 616 880.02		R155	38 520.72	2 617 171.92	
L156	37 753.64	2 616 829.74		R156	38 443.32	2 617 126.76	
L157	37 644.47	2 616 723.72		R157	38 385.43	2 617 101.30	
L158	37 545.91	2 616 636.97		R158	38 265.21	2 617 069.11	
L159	37 438.08	2 616 577.05		R159	38 133.41	2 617 036.18	
L160	37 338.75	2 616 547.25		R160	38 091.87	2 617 025.66	
L161	37 213.01	2 616 537.84		R161	37 950.61	2 616 993.17	
L162	37 095.70	2 616 536.67		R162	37 879.01	2 616 966.08	
L163	36 979.08	2 616 509.38		R163	37 813.79	2 616 931.43	
L164	36 880.21	2 616 459.08		R164	37 780.24	2 616 907.04	
L165	36 806.49	2 616 399.24		R165	37 724.16	2 616 857.08	
L166	36 728.49	2 616 302.93		R166	37 609.06	2 616 744.68	
L167	36 656.31	2 616 198.35		R167	37 522.21	2 616 668.95	
L168	36 562.89	2 616 060.68		R168	37 475.41	2 616 638.33	
L169	36 503.68	2 615 979.29		R169	37 426.05	2 616 610.97	
L170	36 439.59	2 615 905.73		R170	37 327.96	2 616 583.40	
L171	36 360.50	2 615 832.10		R171	37 213.40	2 616 573.93	
L172	36 201.24	2 615 709.20		R172	37 092.06	2 616 574.74	
L173	35 412.40	2 615 111.95		R173	37 017.78	2 616 558.14	
L174	34 863.75	2 614 697.04		R174	36 953.88	2 616 537.64	
L175	34 759.30	2 614 623.36		R175	36 865.30	2 616 490.33	
L176	34 646.44	2 614 551.49		R176	36 822.97	2 616 460.00	
L177	34 568.86	2 614 505.51		R177	36 783.61	2 616 425.89	
L178	33 885.99	2 614 133.35		R178	36 717.13	2 616 348.15	
L179	33 528.58	2 613 938.56		R179	36 596.57	2 616 174.51	
L180	33 403.82	2 613 854.94		R180	36 471.87	2 616 003.28	
L181	33 348.00	2 613 807.95		R181	36 424.06	2 615 947.47	
L182	33 214.03	2 613 687.05		R182	36 346.04	2 615 871.52	
L183	32 790.68	2 613 305.02		R183	36 283.71	2 615 821.73	
L184	32 644.78	2 613 169.22		R184	35 389.68	2 615 145.09	
L185	32 574.95	2 613 098.30		R185	34 837.61	2 614 727.26	
L186	32 507.60	2 613 024.72		R186	34 740.82	2 614 659.34	
L187	32 442.65	2 612 949.44		R187	34 623.06	2 614 584.00	
L188	32 380.40	2 612 871.54		R188	34 544.05	2 614 537.20	
L189	32 278.83	2 612 734.16		R189	33 889.04	2 614 179.87	
L190	30 230.89	2 609 898.82		R190	33 867.41	2 614 185.21	
L191	30 174.01	2 609 817.95		R191	33 839.04	2 614 169.73	
L192	30 118.64	2 609 734.02		R192	33 845.01	2 614 165.10	
L193	30 066.91	2 609 648.76		R193	33 845.39	2 614 156.36	
L194	29 971.26	2 609 471.81		R194	33 524.58	2 613 981.12	
L195	29 888.51	2 609 290.32		R195	33 493.85	2 613 963.79	
L196	29 843.26	2 609 174.74		R196	33 411.17	2 613 910.63	
L197	29 810.36	2 609 080.55		R197	33 338.21	2 613 855.33	
L198	29 780.67	2 608 985.15		R198	33 277.71	2 613 798.50	
L199	29 726.02	2 608 793.50		R199	33 178.24	2 613 708.48	
L200	29 612.50	2 608 376.37		R200	32 667.20	2 613 246.04	
L201	29 574.64	2 608 228.94		R201	32 594.68	2 613 175.79	
L202	29 553.37	2 608 131.75		R202	32 525.78	2 613 104.02	
L203	29 535.03	2 608 034.89		R203	32 459.39	2 613 030.13	
L204	29 483.66	2 607 744.41		R204	32 394.86	2 612 953.90	
				Vel Sheet	16	Van of 18	P1132/19

PADRESERWE KOÖRDINATE / ROAD RESERVE CO-ORDINATES							
LINKERKANT/LEFT HAND SIDE				REGTERKANT/RIGHT HAND SIDE			
	Y	X	WG 31 <sup>a</sup>		Y	X	
L205	29 473.31	2 607 644.87		R205	32 326.91	2 612 858.53	
L206	29 455.03	2 607 044.51		R206	32 259.25	2 612 768.84	
L207	29 449.72	2 606 946.31		R207	32 223.78	2 612 726.21	
L208	29 428.34	2 606 848.81		R208	31 381.01	2 611 557.41	
L209	29 377.50	2 606 723.03		R209	30 447.68	2 610 267.73	
L210	29 217.34	2 606 514.84		R210	30 310.21	2 610 083.67	
L211	29 089.88	2 606 362.90		R211	30 193.51	2 609 922.39	
L212	28 116.21	2 605 120.04		R212	30 136.21	2 609 840.77	
L213	27 998.17	2 604 958.99		R213	30 081.50	2 609 757.57	
L214	27 943.77	2 604 875.16		R214	30 029.87	2 609 672.56	
L215	27 892.01	2 604 789.72		R215	29 980.78	2 609 585.82	
L216	27 842.55	2 604 701.17		R216	29 934.22	2 609 496.04	
L217	27 796.74	2 604 612.32		R217	29 891.32	2 609 406.63	
L218	27 754.02	2 604 522.19		R218	29 841.52	2 609 290.69	
L219	27 730.13	2 604 469.30		R219	29 813.92	2 609 221.93	
L220	27 692.62	2 604 378.35		R220	29 779.75	2 609 128.26	
L221	27 661.08	2 604 294.22		R221	29 746.95	2 609 034.26	
L222	27 629.00	2 604 199.73		R222	29 719.94	2 608 938.25	
L223	27 600.19	2 604 103.96		R223	29 668.69	2 608 749.82	
L224	27 574.42	2 604 007.64		R224	29 582.55	2 608 409.21	
L225	27 551.84	2 603 910.20		R225	29 569.26	2 608 383.17	
L226	27 532.63	2 603 812.15		R226	29 540.49	2 608 275.01	
L227	27 516.51	2 603 711.99		R227	29 507.75	2 608 126.47	
L228	27 504.32	2 603 612.86		R228	29 489.75	2 608 029.01	
L229	27 495.23	2 603 513.41		R229	29 453.16	2 607 829.40	
L230	27 489.43	2 603 413.60		R230	29 437.28	2 607 730.97	
L231	27 486.66	2 603 313.83		R231	29 428.18	2 607 615.12	
L232	27 487.60	2 603 213.85		R232	29 425.38	2 607 529.82	
L233	27 491.78	2 603 114.09		R233	29 412.05	2 607 082.84	
L234	27 499.35	2 603 014.44		R234	29 408.53	2 606 982.87	
L235	27 510.04	2 602 915.06		R235	29 391.79	2 606 880.35	
L236	27 522.90	2 602 826.20		R236	29 357.50	2 606 791.24	
L237	27 540.00	2 602 727.90		R237	29 156.18	2 606 527.98	
L238	27 561.01	2 602 625.83		R238	28 947.96	2 606 255.69	
L239	27 585.08	2 602 529.15		R239	28 930.57	2 606 230.94	
L240	27 612.22	2 602 433.13		R240	28 091.10	2 605 159.75	
L241	27 642.50	2 602 337.95		R241	28 030.78	2 605 080.15	
L242	29 584.43	2 596 701.17		R242	27 972.27	2 604 999.28	
L243	29 617.20	2 596 608.83		R243	27 917.36	2 604 915.72	
L244	29 652.68	2 596 516.70		R244	27 865.03	2 604 830.80	
L245	29 691.33	2 596 427.45		R245	27 815.66	2 604 743.87	
L246	29 732.38	2 596 337.43		R246	27 768.96	2 604 655.81	
L247	29 776.55	2 596 249.92		R247	27 725.82	2 604 565.38	
L248	29 823.04	2 596 164.78		R248	27 684.47	2 604 474.62	
L249	29 872.38	2 596 081.76		R249	27 646.67	2 604 382.03	
L250	29 926.10	2 595 997.41		R250	27 612.07	2 604 288.24	
L251	29 982.30	2 595 915.00		R251	27 580.90	2 604 193.56	
L252	30 040.34	2 595 835.85		R252	27 552.83	2 604 097.68	
L253	30 103.04	2 595 756.09		R253	27 527.23	2 604 000.96	
L254	30 167.34	2 595 679.65		R254	27 505.27	2 603 903.51	
L255	30 956.18	2 594 773.61		R255	27 486.51	2 603 805.42	
				Vel Sheet	17	Van of	18
				P1132/19			



PADRESERWE KOÖRDINATE / ROAD RESERVE CO-ORDINATES									
LINKERKANT/LEFT HAND SIDE					REGTERKANT/RIGHT HAND SIDE				
	Y	X	WG 31°			Y	X		
L256	31 020.05	2 594 734.81		R256	27 471.32	2 603 706.77			
L257	31 023.49	2 594 717.45		R257	27 459.40	2 603 607.67			
L258	31 050.41	2 594 665.52		R258	27 450.60	2 603 508.12			
L259	31 204.56	2 594 487.86		R259	27 445.10	2 603 408.35			
L260	31 272.08	2 594 406.42		R260	27 442.62	2 603 308.46			
L261	31 332.58	2 594 328.04		R261	27 443.63	2 603 208.57			
L262	31 392.62	2 594 244.48		R262	27 448.05	2 603 108.83			
L263	31 448.91	2 594 160.17		R263	27 455.54	2 603 009.18			
L264	31 501.71	2 594 074.72		R264	27 466.19	2 602 909.77			
L265	31 548.77	2 593 993.59		R265	27 480.60	2 602 811.16			
L266	31 599.56	2 593 897.95		R266	27 504.00	2 602 682.78			
L267	31 643.52	2 593 808.27		R267	27 502.74	2 602 636.33			
L268	31 685.29	2 593 715.77		R268	27 507.45	2 602 596.42			
L269	31 723.14	2 593 623.56		R269	27 532.87	2 602 556.30			
L270	31 757.11	2 593 531.83		R270	27 558.60	2 602 459.89			
L271	31 790.23	2 593 433.08		R271	27 587.33	2 602 364.44			
L272	31 819.40	2 593 334.99		R272	29 542.42	2 596 688.13			
L273	31 845.30	2 593 235.27		R273	29 575.86	2 596 593.73			
L274	31 869.26	2 593 128.57		R274	29 611.86	2 596 500.19			
L275	31 887.25	2 593 031.32		R275	29 650.71	2 596 408.23			
L276	32 667.75	2 588 098.14		R276	29 693.02	2 596 317.74			
L277	32 689.31	2 588 056.71		R277	29 738.16	2 596 228.40			
L278	32 693.97	2 588 027.23		R278	29 786.17	2 596 140.73			
L279	32 689.08	2 587 962.16		R279	29 837.42	2 596 054.82			
L280	33 016.05	2 585 895.01		R280	29 891.25	2 595 970.46			
L281	33 382.19	2 583 578.80		R281	29 948.36	2 595 886.99			
L282	33 506.05	2 582 796.88		R282	30 006.73	2 595 807.03			
L283	33 505.71	2 582 793.20		R283	30 069.61	2 595 727.50			
L284	33 548.30	2 582 518.39		R284	30 136.07	2 595 648.32			
L285	33 551.27	2 582 509.82		R285	30 923.44	2 594 744.05			
L286	33 674.28	2 581 736.14		R286	30 959.16	2 594 687.30			
REGTERKANT/RIGHT HAND SIDE					R287	30 950.29	2 594 671.83		
					R288	31 016.56	2 594 637.02		
					R289	31 172.14	2 594 458.21		
					R290	31 236.19	2 594 380.92		
					R291	31 295.06	2 594 304.81		
					R292	31 355.58	2 594 220.70		
					R293	31 411.07	2 594 137.65		
					R294	31 463.86	2 594 052.54		
					R295	31 513.40	2 593 966.69		
					R296	31 559.54	2 593 879.77		
					R297	31 603.47	2 593 790.09		
					R298	31 644.57	2 593 698.94		
					R299	31 683.53	2 593 604.19		
					R300	31 717.19	2 593 512.95		
					R301	31 748.76	2 593 418.18		
R307	32 631.84	2 587 963.80		R302	31 777.27	2 593 322.35			
R308	32 649.08	2 587 933.29		R303	31 802.33	2 593 225.64			
R309	33 615.08	2 581 825.87		R304	31 844.32	2 593 021.20			
R310	33 630.84	2 581 727.05		R305	32 629.06	2 588 059.84			
R311	33 629.33	2 581 725.33		R306	32 622.45	2 588 008.68			
					Vel Sheet	18	Van of	18	P1132/19