

---

**GOVERNMENT NOTICES • GOEWERMENTSKENNISGEWINGS**

---

**DEPARTMENT OF TRANSPORT**

NO. 4179

11 December 2023

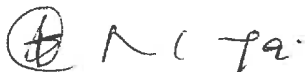
**THE SOUTH AFRICAN NATIONAL ROADS  
AGENCY SOC LIMITED**Registration No: 1998/009584/30

---

**DECLARATION AMENDMENT OF NATIONAL ROAD R75 SECTION 2**

AMENDMENT OF DECLARATION No. 305 OF 2012.

By virtue of section 40(1)(b) of the South African National Roads Agency Limited and the National Roads Act 1998 (Act No. 7 of 1998), I hereby amend Declaration No. 305 of 2012 by substituting paragraph H(III) of the Schedule, being the descriptive declaration of the route from Uitenhage up to Wolwefontein, with the accompanying sheets 1 to 23 of Plan No. P1225/22.

**(National Road R75 Section 2: Uitenhage – Wolwefontein)**

---

**MINISTER OF TRANSPORT**

DEPARTEMENT VAN VERVOER

NO. 4179

11 Desember 2023

**DIE SUID-AFRIKAANSE NASIONALE  
PADAGENTSKAP MSB BEPERK**

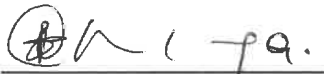
Registrasie No: 1998/009584/30

**VERKLARING WYSIGING VAN NASIONALE PAD R75 SEKSIE 2**

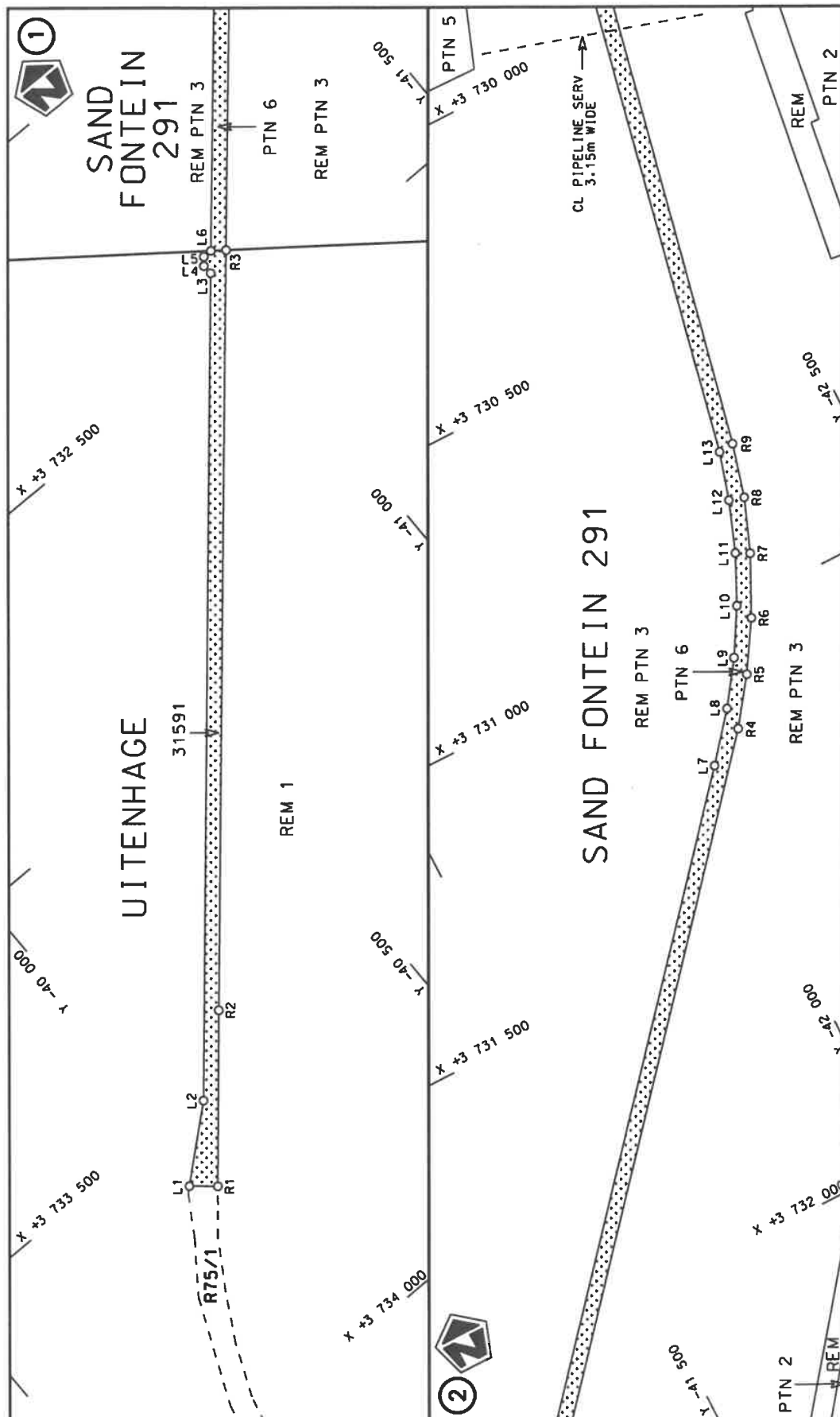
WYSIGING VAN VERKLARING No. 305 VAN 2012.

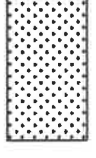
Kragtens Artikel 40(1)(b) van die Suid-Afrikaanse Nasionale Padagentskap Beperk en Nasionale Paaie Wet 1998 (Wet No. 7 van 1998), wysig ek hiermee Verklaring No. 305 van 2012 deur paragraaf H(III) van die Skedule te vervang, synde die gedeelte van die beskrywende verklaring van die pad vanaf Uitenhage tot by Wolwefontein, met bygaande velle 1 tot 23 van Plan No. P1225/22.

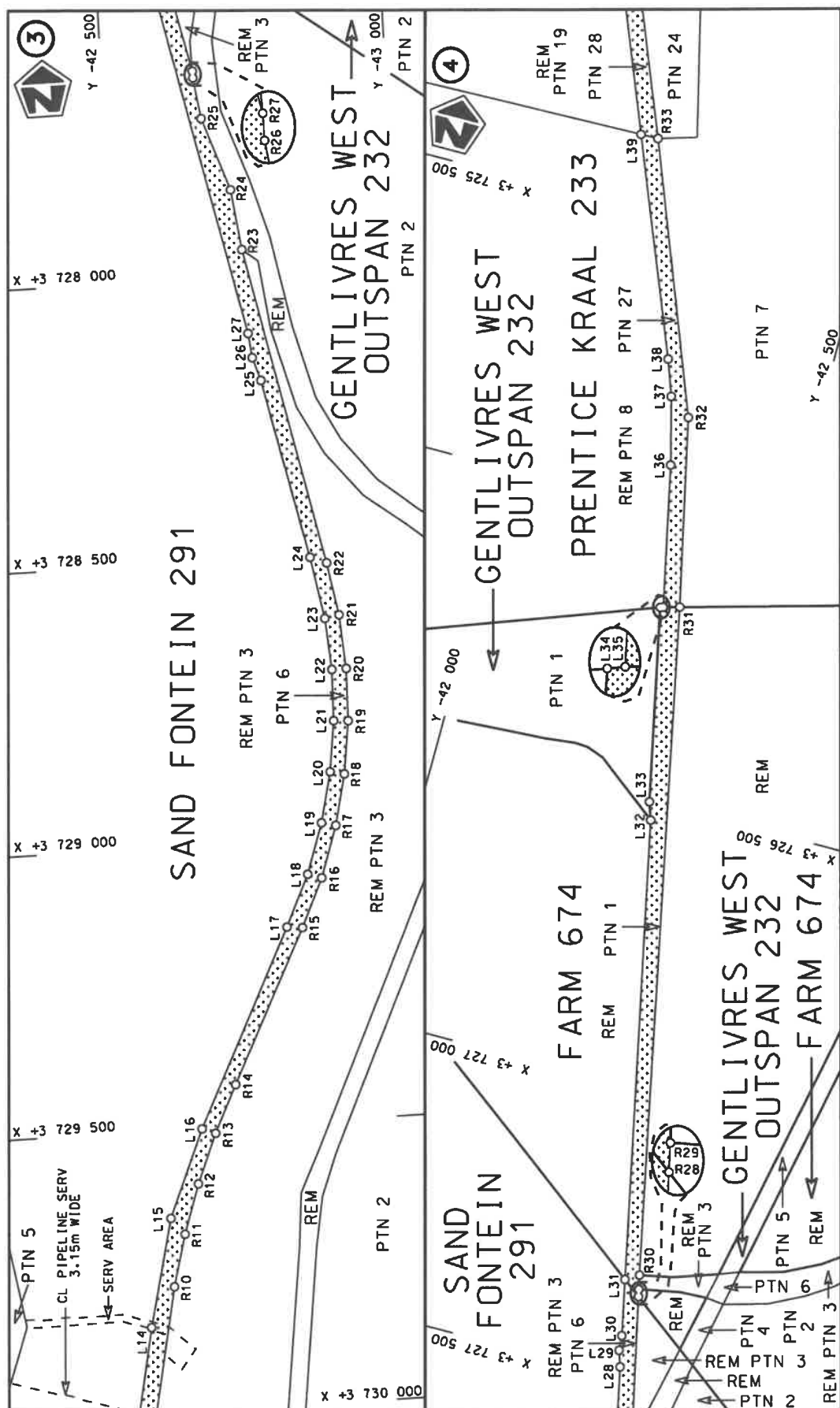
**(Nasionale Pad R75 Seksie 2: Uitenhage – Wolwefontein)**

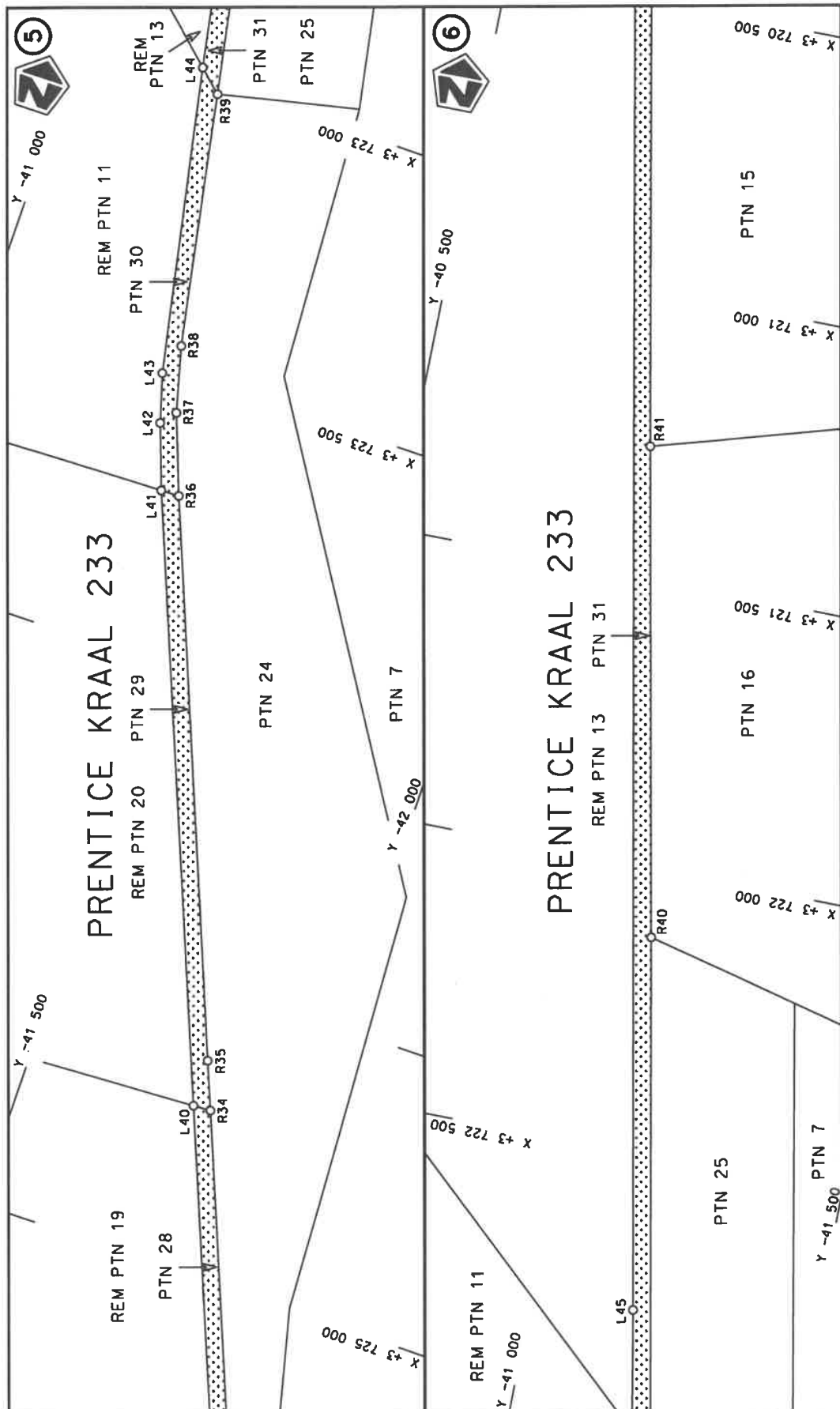


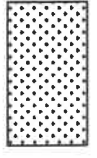
**MINISTER VAN VERVOER**

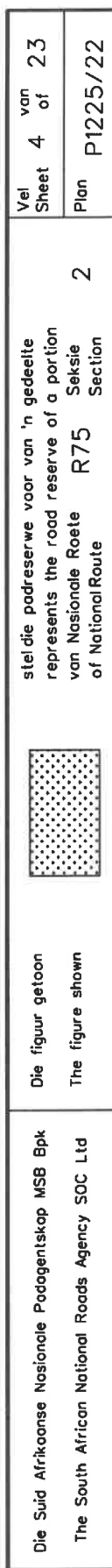


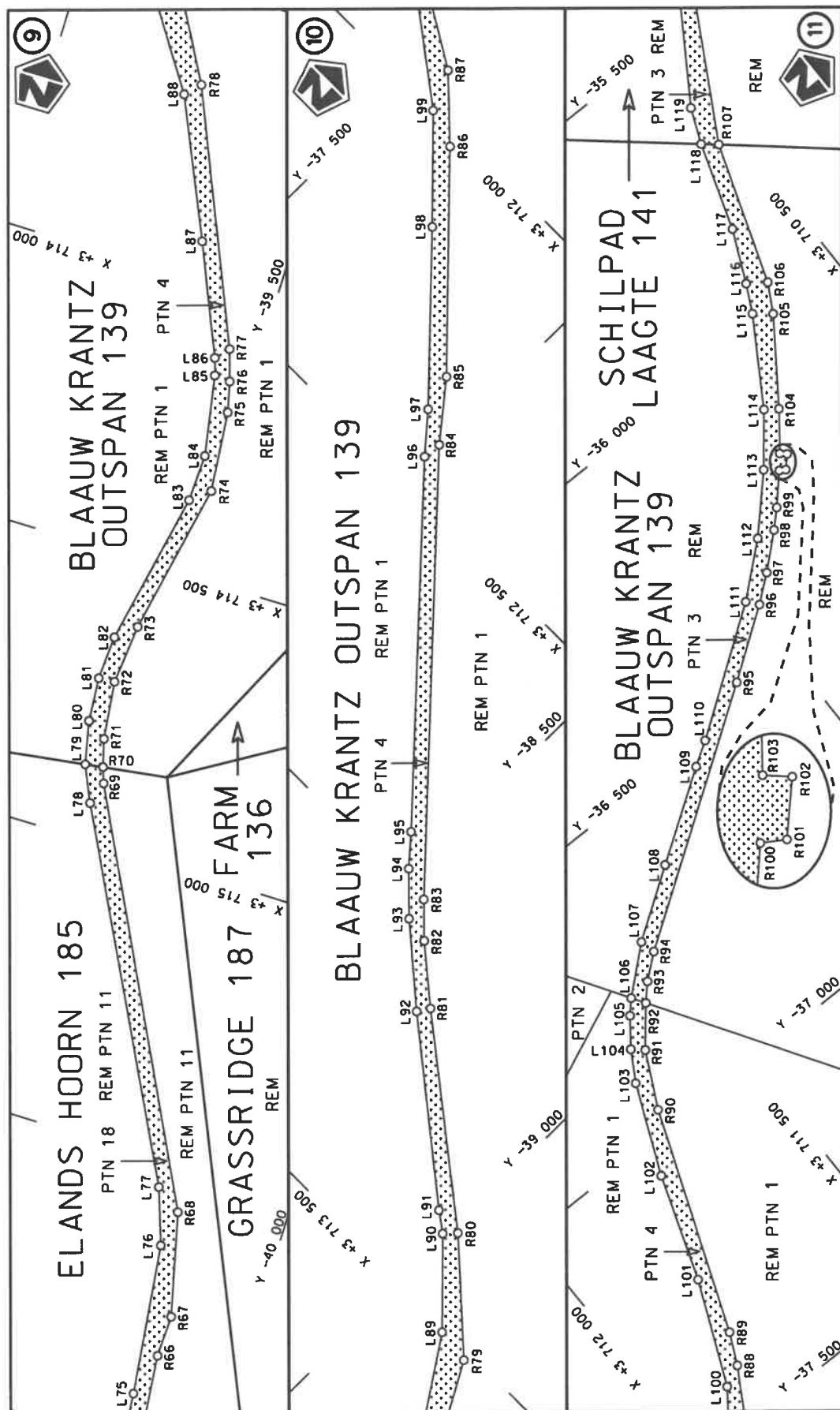
Die Suid Afrikaanse Nasionale Padagentskap MSB Bpk The South African National Roads Agency SOC Ltd	Die figuur getoon The figure shown		steldie padreserwe voor van 'n gedeelte represents the road reserve of a portion van Nasionale Roete R75 of National Route	Vel Sheet 1 of 23	2	Plan P1225/22
---	---------------------------------------	---	---	----------------------	---	------------------

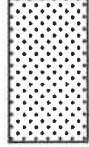


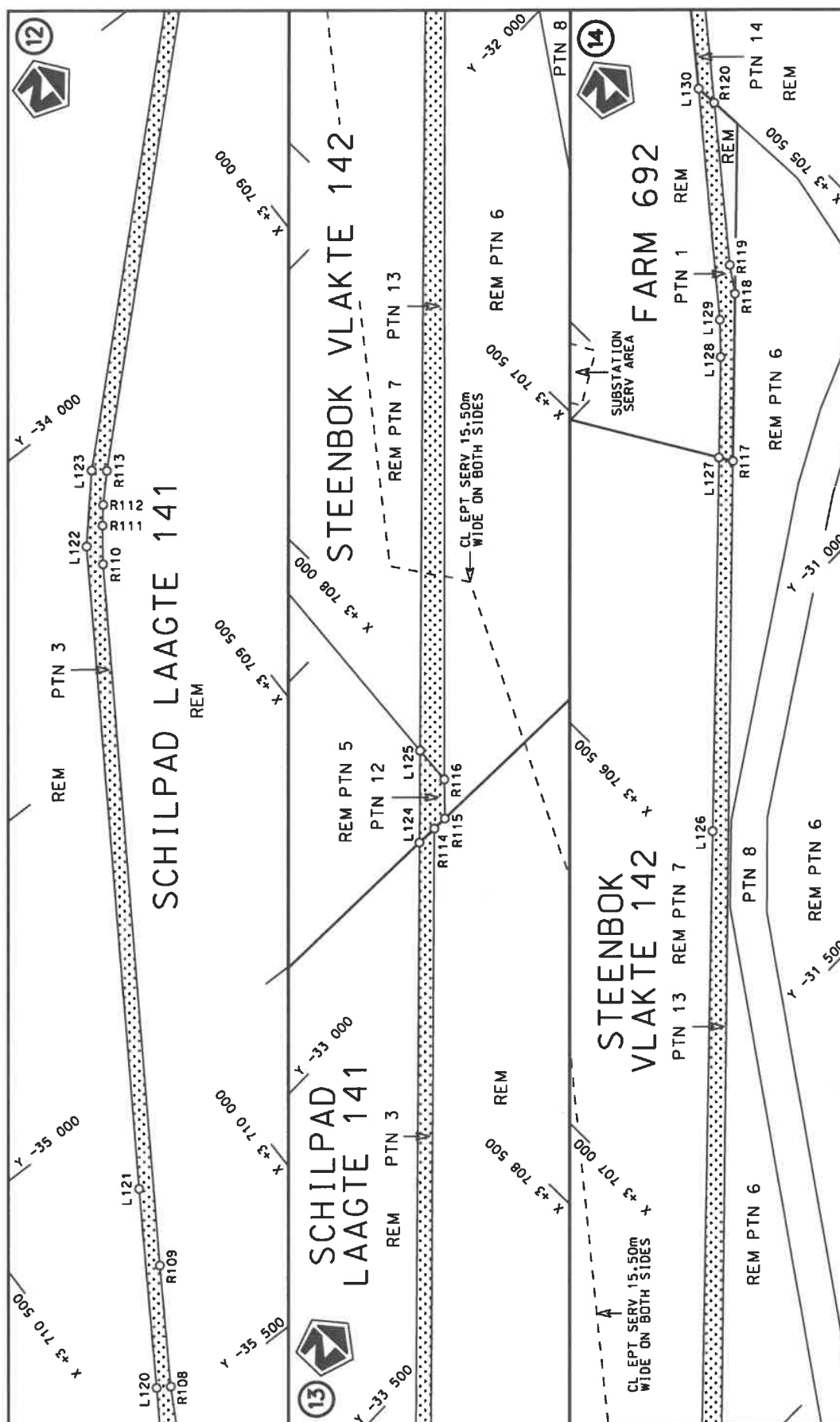


Die Suid Afrikaanse Nasionale Padagentskap MSB Bpk The South African National Roads Agency SOC Ltd	Die figuur getoon The figure shown	stel die padreserwe voor van 'n gedeelte represents the road reserve of a portion van Nasionale Roete R75 of National Route	Vel Sheet 3 of 23
	2 Sektie Section	Plan P1225/22	

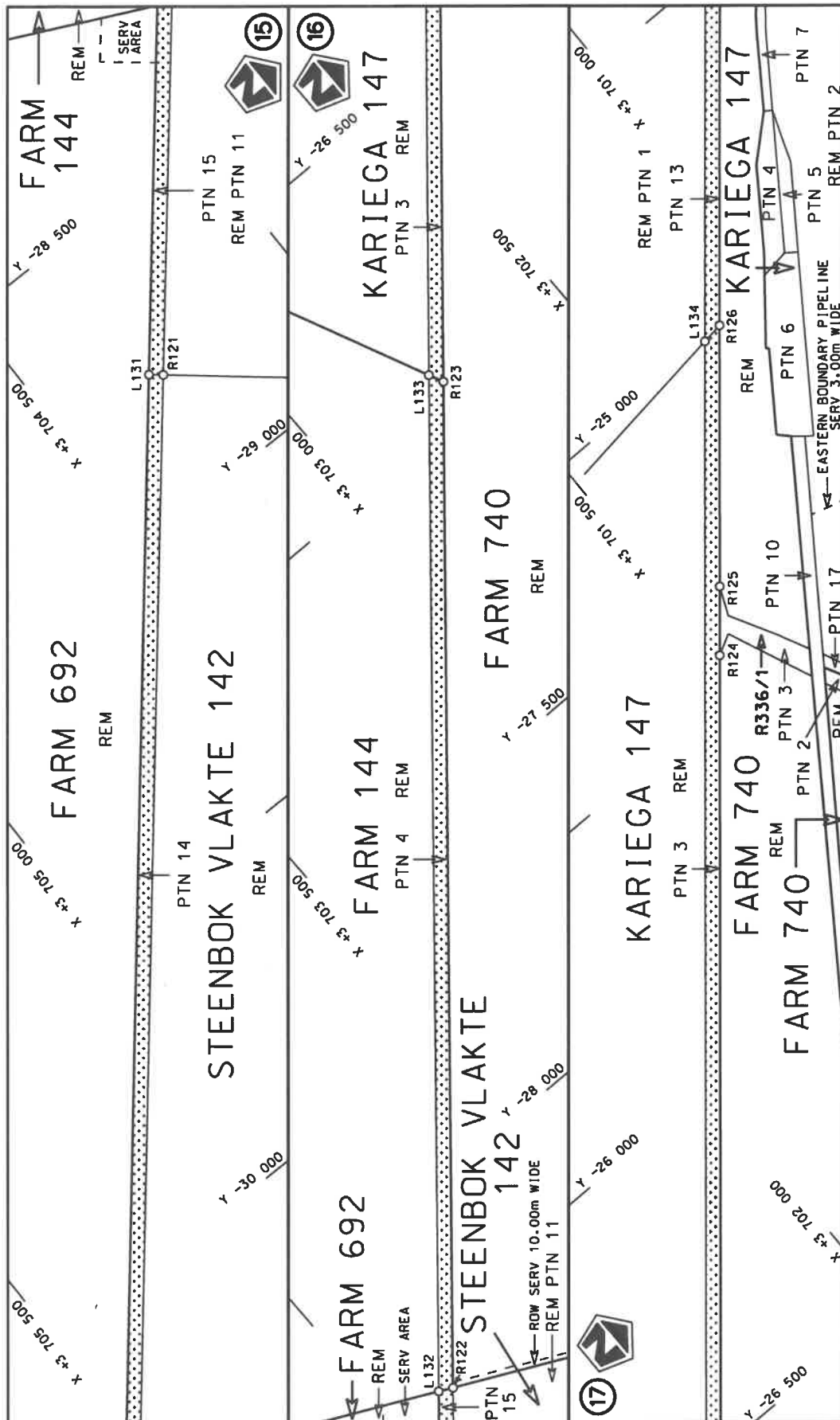




Die Suid Afrikaanse Nasionale Padagentskap MSB Bpk The South African National Roads Agency SOC Ltd	Die figuur getoon The figure shown		steldie podreserwe voor van 'n gedeelte represents the road reserve of a portion van Nasionale Roete R75 of National Route
Vel Sheet 5 of 23	Plan P1225/22	2	2



<p>Die Suid Afrikaanse Nasionale Padagentskap MSB Bpk The South African National Roads Agency SOC Ltd</p>	<p>Die figuur getoon The figure shown</p>	<p>stelt die padreserwe voor van 'n gedeelte represents the road reserve of a portion van Nasionale Roete R75 Sektie of National Route of National Route</p>	<p>Vel Sheet 6 of 23</p>
<p>Plan P1225/22</p>	<p>2</p>	<p>Seksie Section</p>	<p>Plan P1225/22</p>



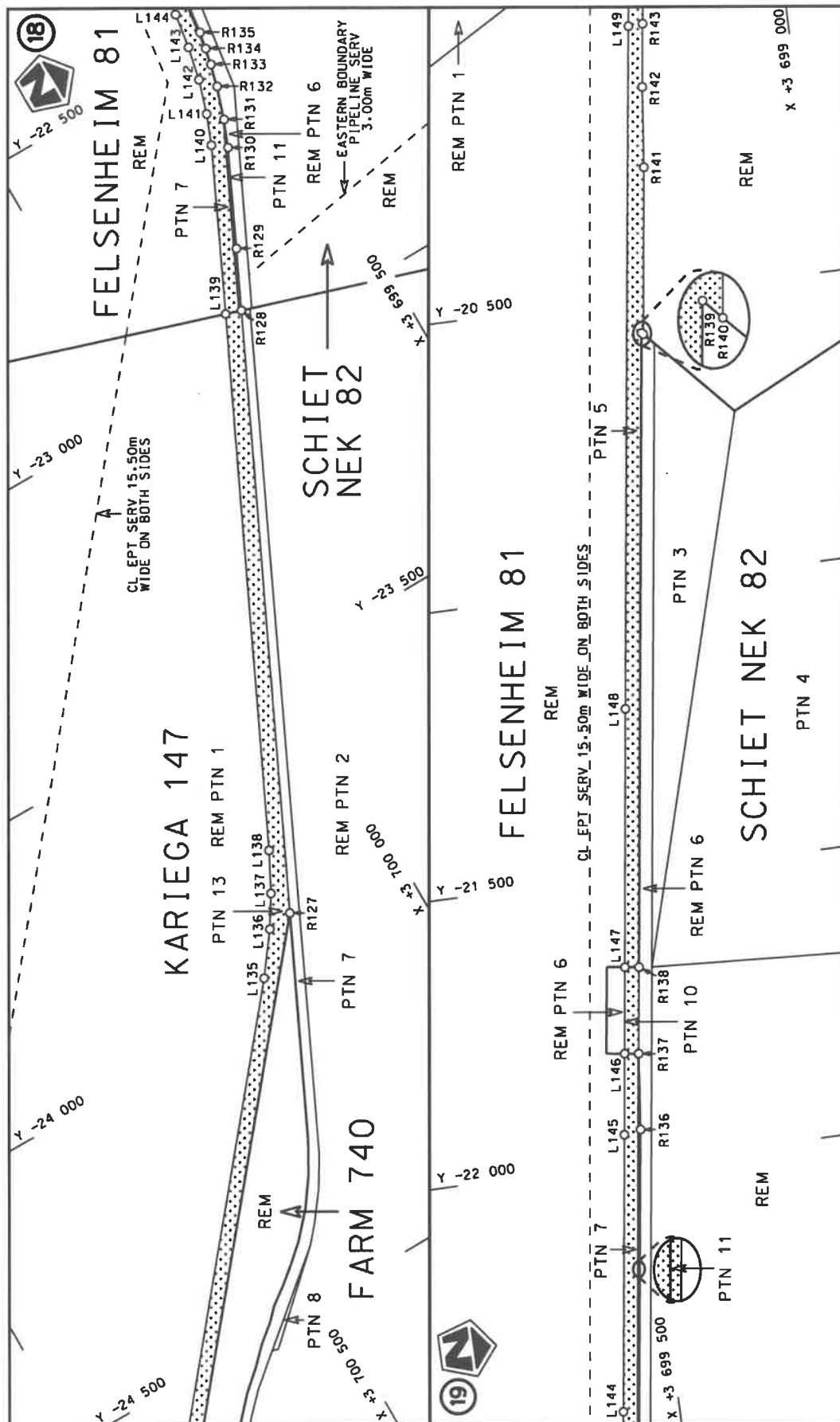
Die Suid Afrikaanse Nasionale Padagentskap MSB Bpk  
The South African National Roads Agency SOC Ltd

Die figuur getoon  
The figure shown

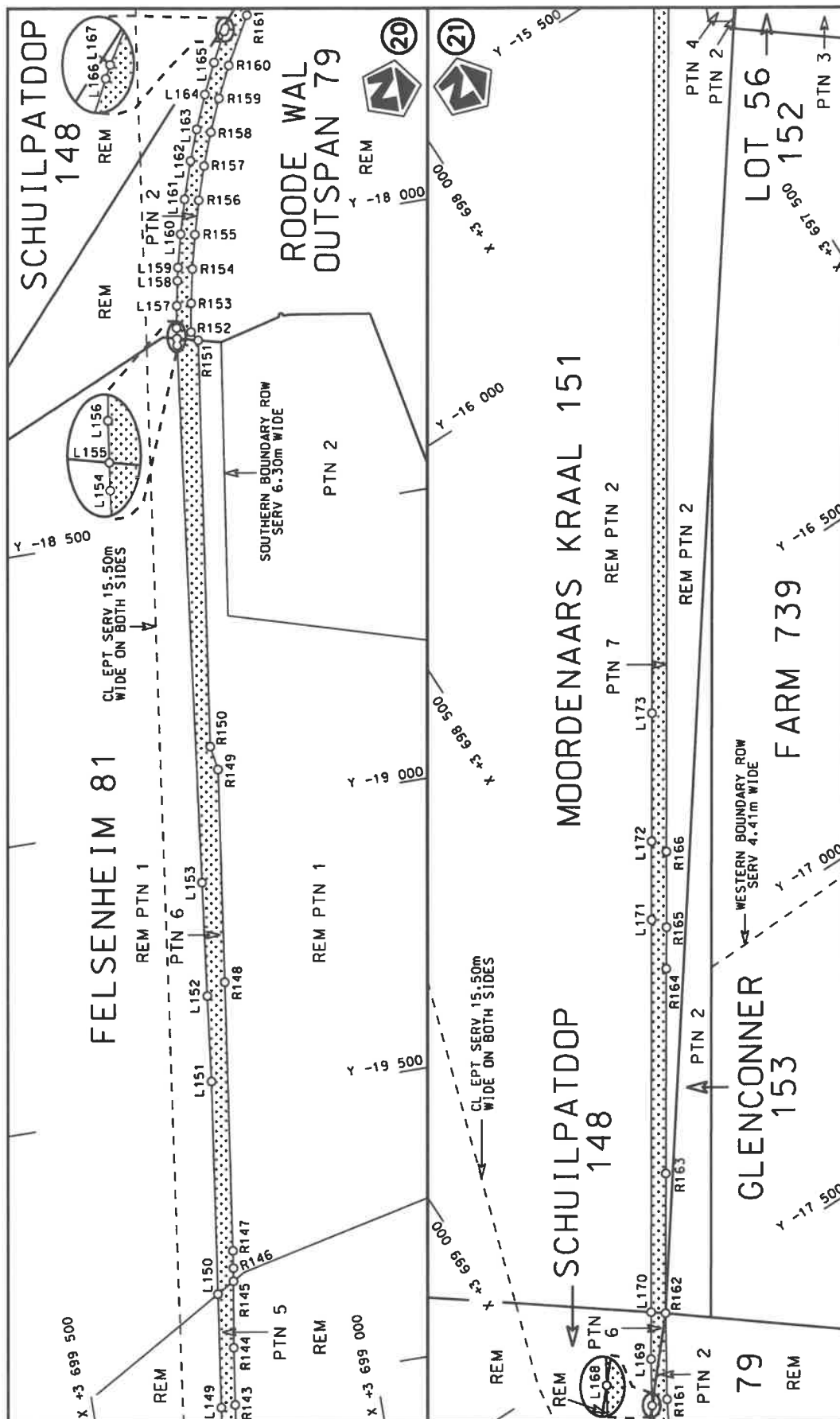


stel die podreserwe voor van 'n gedeelte  
represents the road reserve of a portion  
van Nasionale Roete R75 Sektie  
of National Route Section

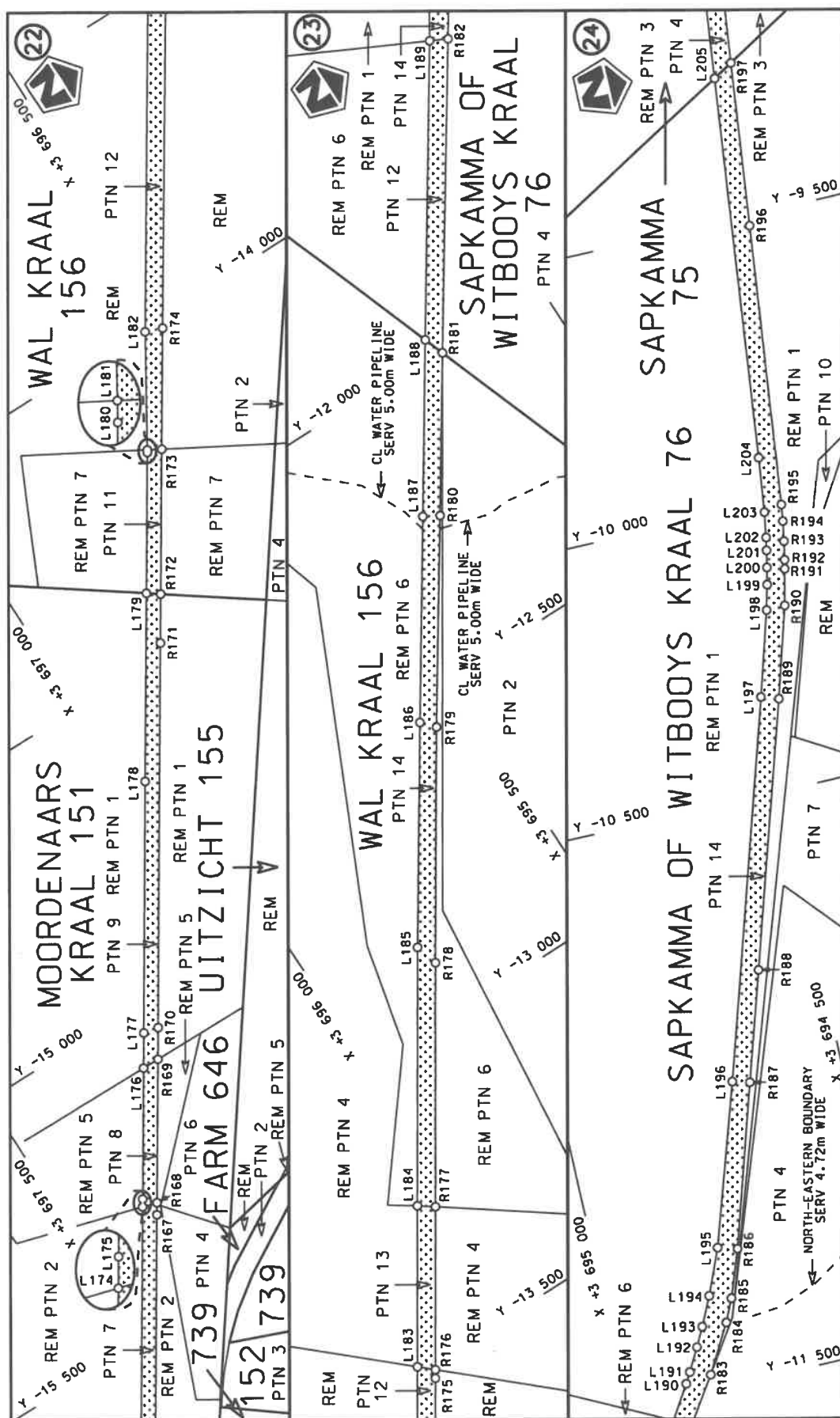
Vel  
Sheet 7 of 23  
Plan P1225/22



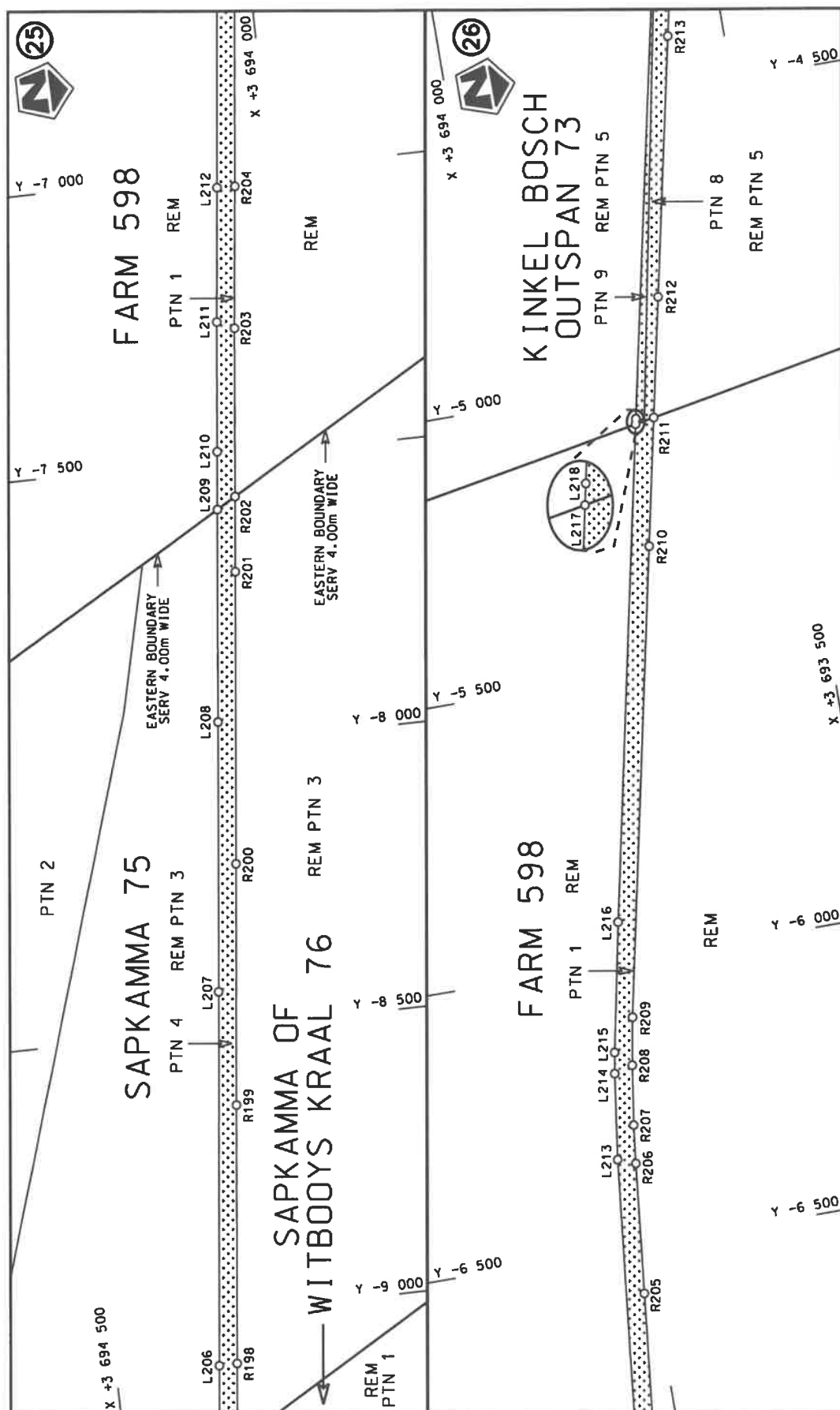
Die Suid Afrikaanse Nasionale Padagentskap MSB Bpk The South African National Roads Agency SOC Ltd	Die figuur getoon The figure shown	steldie padreserwe voor van 'n gedeelte represents the road reserve of a portion van Nasionale Roete R75 of National Route	2	Plan P1225/22	Vel Sheet 8 of 23	2	Section
---	---------------------------------------	---	---	---------------	-------------------	---	---------




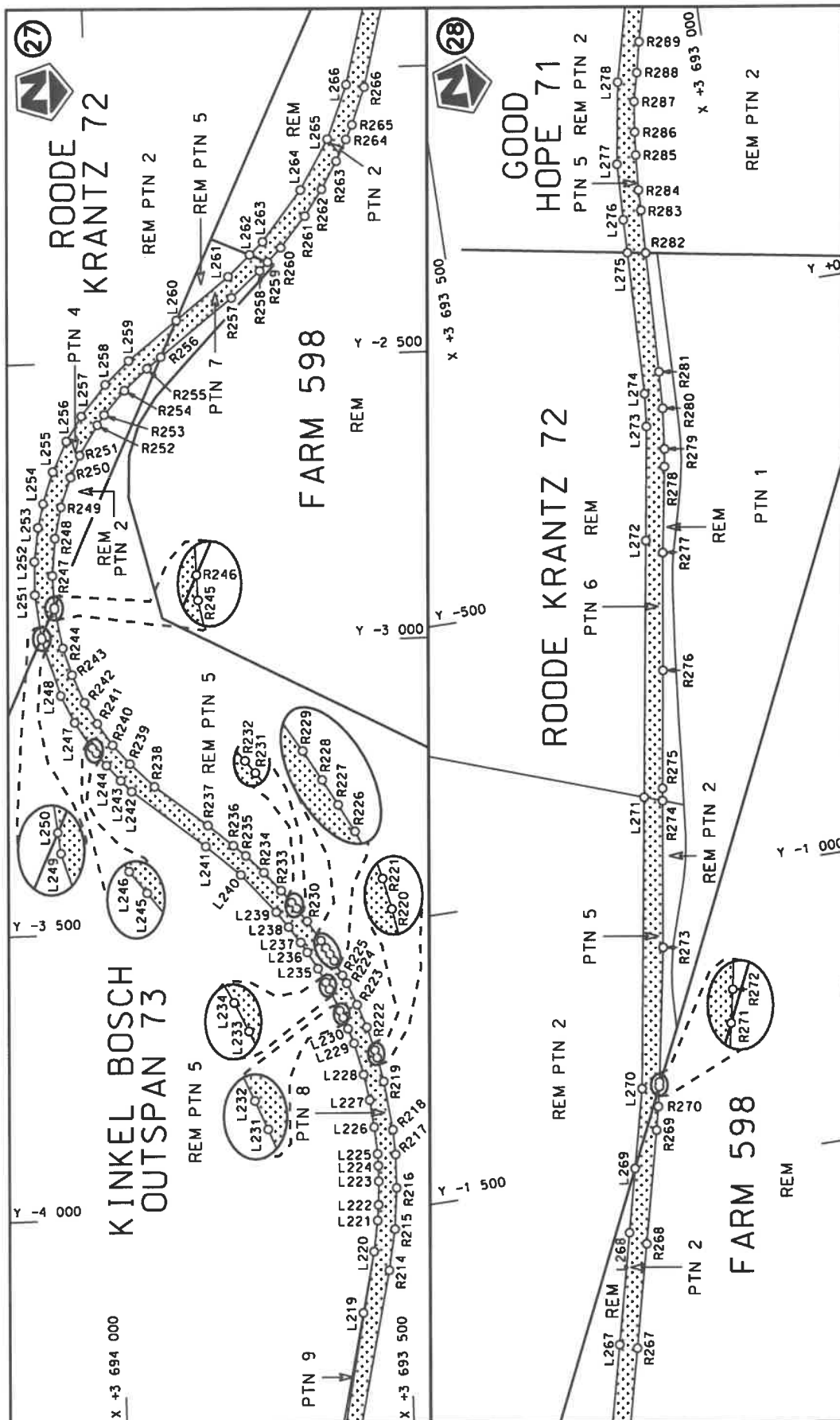
Die Suid Afrikaanse Nasionale Padagentskap MSB Bpk The South African National Roads Agency SOC Ltd	Die figuur getoon The figure shown	steldie padreserwe voor van 'n gedeelte represents the road reserve of a portion van Nasionale Roete R75 of National Route	Val Sheet 9 of 23 Plan P1225/22
---	---------------------------------------	---	---------------------------------------

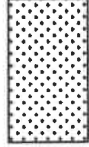


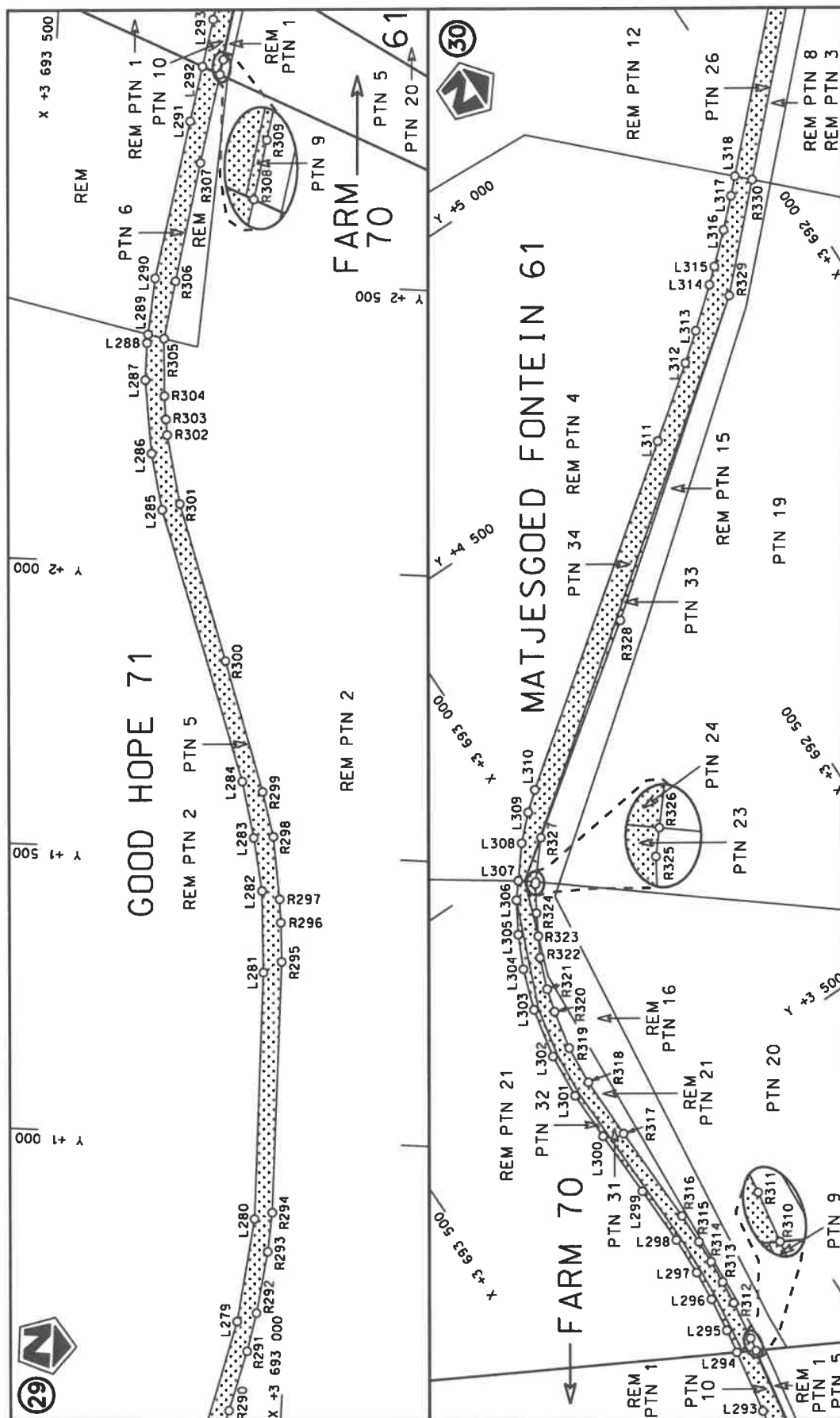
Die Suid Afrikaanse Nasionale Padagentskap MSB Bpk The South African National Roads Agency SOC Ltd	Die figuur getoon The figure shown	steldie padreserwe voor van 'n gedeelte represents the road reserve of a portion van Nasionale Roete R75 of National Route	Vel Sheet 10 of 23 Plan P1225/22
---	---------------------------------------	---	--



Die Suid Afrikaanse Nasionale Padagentskap MSB Bpk  The South African National Roads Agency SOC Ltd	Die figuur getoon  The figure shown		stel die padreserwe voor van 'n gedeelte represents the road reserve of a portion van Nasionale Roete R75 of National Route	Vel Sheet 11 of 23
			2	Plan P1225/22



Die Suid Afrikaanse Nasionale Podagogeniskap MSB Bpk The South African National Roads Agency SOC Ltd	Die figuur getoon The figure shown		steeldie padreserwe voor van 'n gedeelte represents the road reserve of a portion van Nasionale Roete R75 of National Route Section
Val Sheet 12 of 23	2	Plan P1225/22	Section



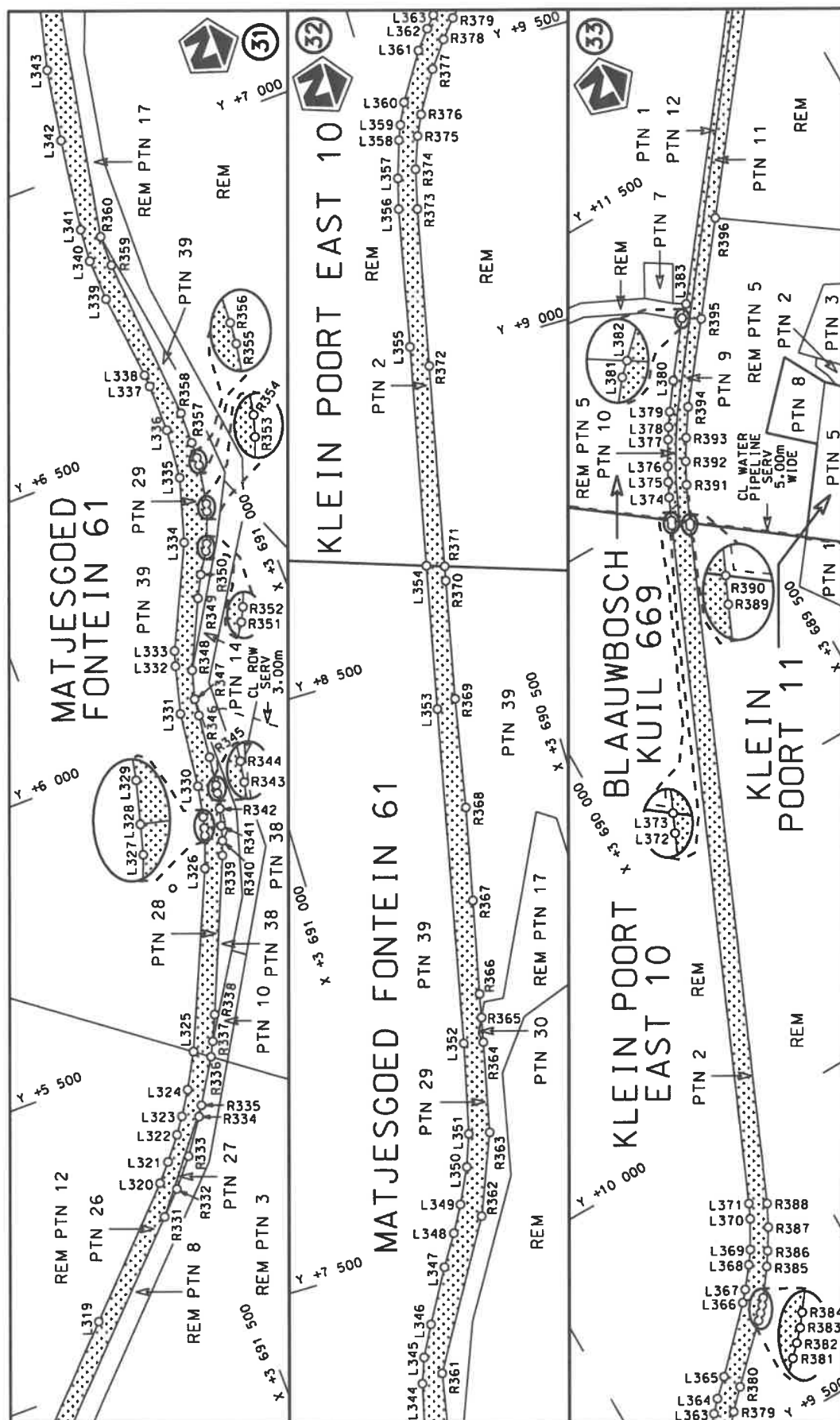
Vel  
Sheet 13 of 23  
Plan P1225/22

stel die padreserwe voor van 'n gedeelte  
represents the road reserve of a portion  
van Nasionale Roete R75  
of National Route Section



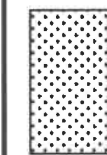
Die figuur getoon  
The figure shown

Die Suid Afrikaanse Nasionale Padagentskap MSB Bpk  
The South African National Roads Agency SOC Ltd



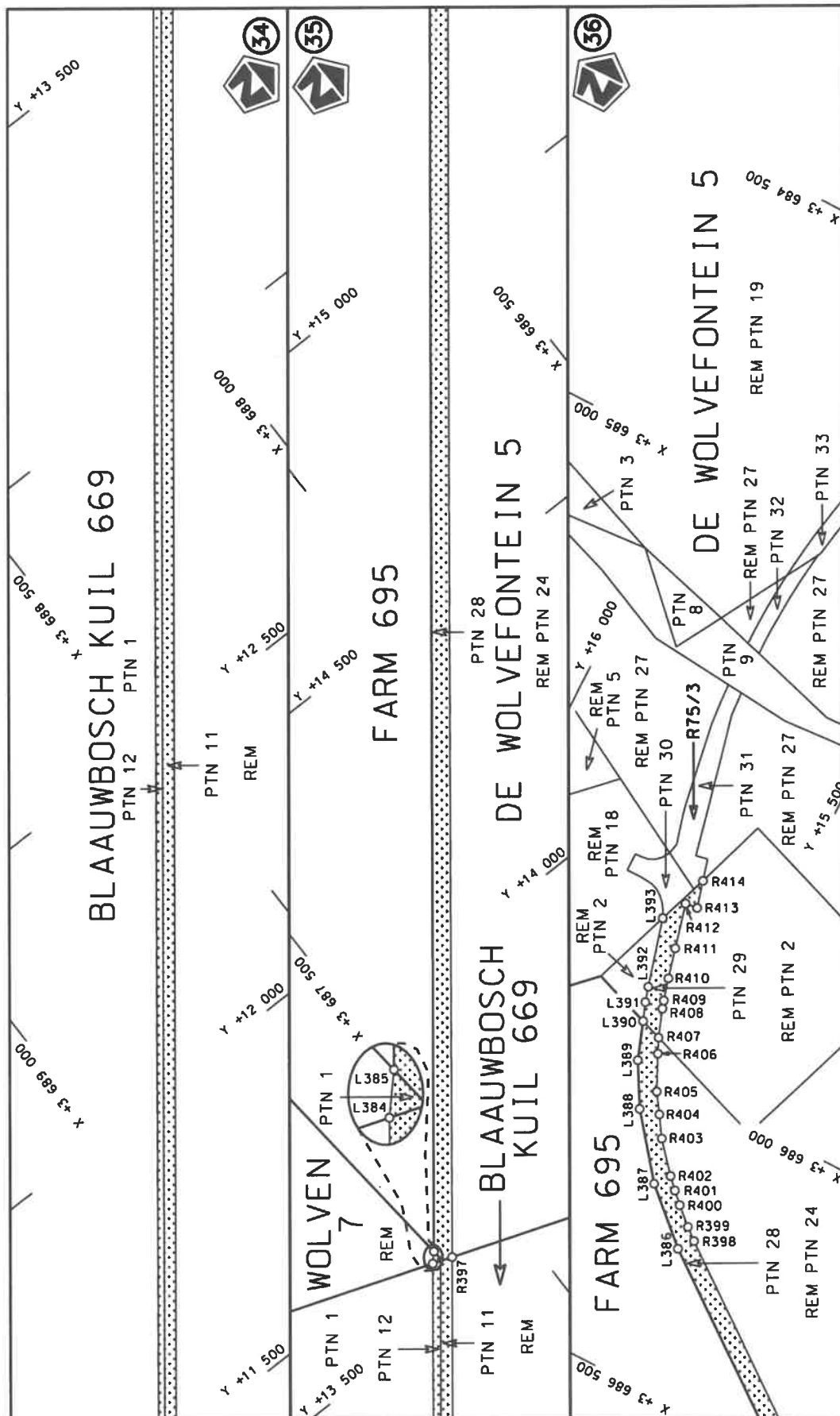
Die Suid Afrikaanse Nasionale Podagentskap MSB Bpk  
The South African National Roads Agency SOC Ltd

Die figuur getoon  
The figure shown



steldie podreserwe voor van 'n gedeelte  
represents the road reserve of a portion  
van Nasionale Roete R75 (of National Route R75)  
Seksie (Section)

Vel  
Sheet 14 of 23  
Plan P1225/22



Die Suid Afrikaanse Nasionale Padagentskap MSB Bpk The South African National Roads Agency SOC Ltd	Die figuur getoon The figure shown	steldie podreserwe voor van 'n gedeelte represents the road reserve of a portion van Nasionale Roete R75 of National Route Section	Vel Sheet 15 of 23	Plan P1225/22
---	---------------------------------------	---	-----------------------	------------------

PADRESERWE KOÖRDINATE / ROAD RESERVE CO-ORDINATES									
LINKERKANT/LEFT HAND SIDE					REGTERKANT/RIGHT HAND SIDE				
	Y		X	WG 25 <sup>a</sup>		Y		X	
L1	-39 954.02	3	733 605.60		R1	-39 991.94	3	733 637.83	
L2	-40 069.29	3	733 506.66		R2	-40 191.46	3	733 402.31	
L3	-41 009.53	3	732 404.05		R3	-41 055.74	3	732 390.08	
L4	-41 008.33	3	732 386.76		R4	-42 080.74	3	731 189.59	
L5	-41 018.65	3	732 374.16		R5	-42 137.47	3	731 111.57	
L6	-41 034.90	3	732 374.16		R6	-42 189.72	3	731 027.31	
L7	-42 014.10	3	731 228.07		R7	-42 239.09	3	730 925.67	
L8	-42 079.18	3	731 148.92		R8	-42 274.07	3	730 833.50	
L9	-42 130.58	3	731 075.46		R9	-42 298.21	3	730 740.50	
L10	-42 176.31	3	730 996.71		R10	-42 496.28	3	729 776.53	
L11	-42 215.94	3	730 913.21		R11	-42 520.74	3	729 684.74	
L12	-42 247.70	3	730 825.65		R12	-42 549.94	3	729 597.25	
L13	-42 271.31	3	730 742.53		R13	-42 585.93	3	729 509.91	
L14	-42 451.59	3	729 846.19		R14	-42 626.38	3	729 426.20	
L15	-42 497.47	3	729 655.31		R15	-42 761.49	3	729 156.78	
L16	-42 562.39	3	729 500.66		R16	-42 800.87	3	729 071.06	
L17	-42 734.20	3	729 154.06		R17	-42 831.40	3	728 980.13	
L18	-42 776.40	3	729 063.22		R18	-42 852.24	3	728 890.09	
L19	-42 806.56	3	728 973.96		R19	-42 864.66	3	728 796.74	
L20	-42 827.27	3	728 884.93		R20	-42 866.93	3	728 704.27	
L21	-42 838.96	3	728 795.09		R21	-42 860.08	3	728 608.96	
L22	-42 841.53	3	728 704.66		R22	-42 843.74	3	728 515.98	
L23	-42 834.71	3	728 613.61		R23	-42 728.27	3	727 954.04	
L24	-42 815.16	3	728 504.26		R24	-42 714.66	3	727 847.26	
L25	-42 747.82	3	728 186.91		R25	-42 670.47	3	727 718.42	
L26	-42 734.95	3	728 145.79		R26	-42 660.28	3	727 645.78	
L27	-42 730.19	3	728 102.50		R27	-42 660.12	3	727 633.75	
L28	-42 599.25	3	727 481.34		R28	-42 598.42	3	727 352.96	
L29	-42 589.92	3	727 453.41		R29	-42 595.63	3	727 340.25	
L30	-42 587.89	3	727 427.07		R30	-42 590.19	3	727 315.80	
L31	-42 567.40	3	727 329.69		R31	-42 350.84	3	726 156.67	
L32	-42 399.87	3	726 533.45		R32	-42 277.93	3	725 829.40	
L33	-42 389.23	3	726 502.79		R33	-42 097.23	3	725 367.60	
L34	-42 317.78	3	726 166.26		R34	-41 832.22	3	724 713.06	
L35	-42 322.83	3	726 164.40		R35	-41 799.18	3	724 631.35	
L36	-42 269.86	3	725 918.49		R36	-41 426.05	3	723 706.93	
L37	-42 239.16	3	725 801.26		R37	-41 374.12	3	723 569.96	
L38	-42 216.58	3	725 738.91		R38	-41 343.68	3	723 455.84	
L39	-42 066.43	3	725 368.36		R39	-41 258.33	3	723 016.36	
L40	-41 801.50	3	724 714.59		R40	-41 081.03	3	722 118.94	
L41	-41 393.56	3	723 707.92		R41	-40 909.46	3	721 270.55	
L42	-41 352.90	3	723 596.06		R42	-40 748.91	3	720 461.51	
L43	-41 327.83	3	723 511.95		R43	-40 524.21	3	719 334.79	
L44	-41 218.56	3	722 980.22		R44	-40 478.65	3	719 203.80	
L45	-41 178.16	3	722 769.65		R45	-40 421.03	3	719 078.92	
L46	-40 543.87	3	719 577.81		R46	-40 332.37	3	718 937.46	
L47	-40 497.79	3	719 356.52		R47	-40 288.05	3	718 881.27	
L48	-40 457.37	3	719 237.71		R48	-40 218.73	3	718 804.25	
L49	-40 411.13	3	719 120.81		R49	-39 803.03	3	718 371.61	
L50	-40 397.88	3	719 093.36		R50	-39 741.05	3	718 236.53	
L51	-40 369.58	3	719 044.67		R51	-39 739.04	3	718 202.40	
Vel 16 Sheet					Van of 23		P1225/22		

PADRESERWE KOÖRDINATE / ROAD RESERVE CO-ORDINATES									
LINKERKANT/LEFT HAND SIDE					REGTERKANT/RIGHT HAND SIDE				
	Y		X	WG 25°		Y		X	
L52	-40 313.92	3	718 958.57		R52	-39 737.10	3	718 169.45	
L53	-40 271.63	3	718 901.37		R53	-39 751.18	3	718 088.32	
L54	-40 205.66	3	718 827.02		R54	-39 776.64	3	718 032.75	
L55	-39 985.86	3	718 598.07		R55	-39 781.82	3	718 025.87	
L56	-39 869.63	3	718 477.01		R56	-40 117.79	3	717 579.43	
L57	-39 749.43	3	718 345.83		R57	-40 168.28	3	717 481.05	
L58	-39 728.44	3	718 281.67		R58	-40 190.10	3	717 384.58	
L59	-39 722.63	3	718 263.89		R59	-40 193.40	3	717 307.17	
L60	-39 719.42	3	718 243.84		R60	-40 114.75	3	716 747.29	
L61	-39 707.03	3	718 166.22		R61	-40 088.92	3	716 639.77	
L62	-39 740.23	3	718 037.74		R62	-40 069.82	3	716 587.42	
L63	-39 758.25	3	718 013.98		R63	-39 879.60	3	716 224.70	
L64	-40 077.79	3	717 592.78		R64	-39 865.81	3	716 141.40	
L65	-40 120.23	3	717 526.06		R65	-39 874.94	3	716 033.27	
L66	-40 158.89	3	717 422.13		R66	-39 854.94	3	715 832.02	
L67	-40 168.83	3	717 291.68		R67	-39 857.50	3	715 759.17	
L68	-40 097.36	3	716 779.91		R68	-39 813.98	3	715 579.24	
L69	-40 061.37	3	716 633.49		R69	-39 464.42	3	714 894.66	
L70	-40 039.98	3	716 578.45		R70	-39 454.85	3	714 867.47	
L71	-39 849.99	3	716 228.68		R71	-39 441.68	3	714 819.42	
L72	-39 829.83	3	716 145.80		R72	-39 429.50	3	714 717.51	
L73	-39 837.30	3	716 070.42		R73	-39 439.82	3	714 613.04	
L74	-39 840.17	3	715 984.27		R74	-39 492.13	3	714 346.14	
L75	-39 834.14	3	715 908.32		R75	-39 478.08	3	714 205.27	
L76	-39 802.58	3	715 644.10		R76	-39 465.16	3	714 152.14	
L77	-39 768.69	3	715 546.57		R77	-39 447.97	3	714 097.60	
L78	-39 451.94	3	714 934.70		R78	-39 262.18	3	713 667.22	
L79	-39 423.66	3	714 871.97		R79	-39 176.91	3	713 515.44	
L80	-39 407.19	3	714 796.74		R80	-39 009.94	3	713 364.99	
L81	-39 400.91	3	714 719.76		R81	-38 694.01	3	713 120.21	
L82	-39 406.03	3	714 642.72		R82	-38 601.32	3	713 043.96	
L83	-39 459.72	3	714 372.86		R83	-38 548.95	3	712 993.13	
L84	-39 463.05	3	714 290.26		R84	-37 997.72	3	712 409.34	
L85	-39 437.42	3	714 149.65		R85	-37 921.48	3	712 315.83	
L86	-39 428.13	3	714 120.01		R86	-37 636.86	3	712 026.03	
L87	-39 345.79	3	713 930.17		R87	-37 538.76	3	711 934.22	
L88	-39 238.41	3	713 692.11		R88	-37 404.53	3	711 855.04	
L89	-39 114.94	3	713 507.85		R89	-37 350.12	3	711 829.06	
L90	-38 992.10	3	713 384.72		R90	-36 964.12	3	711 681.80	
L91	-38 957.76	3	713 360.20		R91	-36 867.88	3	711 633.16	
L92	-38 680.55	3	713 140.96		R92	-36 803.44	3	711 580.62	
L93	-38 554.69	3	713 035.38		R93	-36 775.49	3	711 554.48	
L94	-38 491.40	3	712 973.77		R94	-36 741.22	3	711 512.99	
L95	-38 448.13	3	712 924.85		R95	-36 462.18	3	711 101.87	
L96	-37 994.37	3	712 442.32		R96	-36 380.40	3	710 984.61	
L97	-37 939.26	3	712 379.10		R97	-36 344.58	3	710 939.42	
L98	-37 715.53	3	712 147.87		R98	-36 293.80	3	710 882.30	
L99	-37 570.54	3	712 002.60		R99	-36 265.95	3	710 853.92	
L100	-37 422.53	3	711 892.60		R100	-36 217.76	3	710 809.54	
L101	-37 242.49	3	711 814.24		R101	-36 223.91	3	710 799.33	
L102	-37 058.69	3	711 750.41		R102	-36 203.79	3	710 780.15	
					<div> <div>Vel</div> <div>Sheet</div> </div> <div>17</div> <div>Van</div> <div>of</div> <div>23</div> <div>P1225/22</div>				

PADRESERWE KOÖRDINATE / ROAD RESERVE CO-ORDINATES									
LINKERKANT/LEFT HAND SIDE					REGTERKANT/RIGHT HAND SIDE				
	Y		X	WG 25 <sup>a</sup>		Y		X	
L103	-36 903.05	3	711 683.22		R103	-36 195.01	3	710 790.05	
L104	-36 850.82	3	711 652.27		R104	-36 132.32	3	710 741.88	
L105	-36 803.48	3	711 616.42		R105	-35 995.00	3	710 645.37	
L106	-36 780.54	3	711 595.18		R106	-35 945.50	3	710 618.11	
L107	-36 714.37	3	711 519.24		R107	-35 700.69	3	710 534.36	
L108	-36 634.13	3	711 401.89		R108	-35 457.53	3	710 398.58	
L109	-36 532.97	3	711 250.84		R109	-35 277.66	3	710 284.65	
L110	-36 506.83	3	711 209.61		R110	-34 242.83	3	709 615.68	
L111	-36 361.29	3	711 000.70		R111	-34 188.72	3	709 575.19	
L112	-36 287.35	3	710 914.08		R112	-34 160.55	3	709 552.11	
L113	-36 199.51	3	710 830.29		R113	-34 117.31	3	709 510.69	
L114	-36 116.66	3	710 763.43		R114	-32 860.74	3	708 189.36	
L115	-35 971.82	3	710 673.85		R115	-32 861.80	3	708 164.03	
L116	-35 923.34	3	710 649.43		R116	-32 813.48	3	708 115.29	
L117	-35 832.81	3	710 608.32		R117	-30 753.55	3	705 974.13	
L118	-35 680.40	3	710 558.17		R118	-30 550.79	3	705 763.37	
L119	-35 619.20	3	710 532.60		R119	-30 508.80	3	705 733.92	
L120	-35 444.50	3	710 419.81		R120	-30 289.64	3	705 551.07	
L121	-35 149.06	3	710 231.55		R121	-28 790.64	3	704 300.30	
L122	-34 201.07	3	709 619.28		R122	-28 290.57	3	703 883.10	
L123	-34 100.64	3	709 531.28		R123	-26 938.37	3	702 756.45	
L124	-32 859.27	3	708 224.83		R124	-25 431.44	3	701 500.60	
L125	-32 748.35	3	708 108.09		R125	-25 338.90	3	701 423.54	
L126	-31 182.86	3	706 460.45		R126	-24 988.21	3	701 131.49	
L127	-30 731.60	3	705 986.89		R127	-23 886.56	3	700 213.69	
L128	-30 610.29	3	705 859.58		R128	-22 934.14	3	699 756.96	
L129	-30 563.43	3	705 814.35		R129	-22 836.36	3	699 710.05	
L130	-30 252.97	3	705 552.74		R130	-22 676.55	3	699 634.21	
L131	-28 774.64	3	704 319.48		R131	-22 630.43	3	699 615.73	
L132	-28 279.17	3	703 906.15		R132	-22 574.51	3	699 597.14	
L133	-26 913.32	3	702 768.22		R133	-22 535.91	3	699 587.15	
L134	-24 993.42	3	701 168.70		R134	-22 507.40	3	699 581.09	
L135	-23 962.46	3	700 309.81		R135	-22 477.97	3	699 575.83	
L136	-23 893.29	3	700 257.84		R136	-21 943.61	3	699 504.17	
L137	-23 840.54	3	700 224.67		R137	-21 811.51	3	699 490.24	
L138	-23 773.84	3	700 189.74		R138	-21 661.70	3	699 470.22	
L139	-22 925.49	3	699 783.90		R139	-20 563.20	3	699 323.47	
L140	-22 658.35	3	699 657.16		R140	-20 566.06	3	699 320.85	
L141	-22 606.96	3	699 636.96		R141	-20 276.75	3	699 282.65	
L142	-22 548.47	3	699 619.01		R142	-20 137.37	3	699 267.61	
L143	-22 490.30	3	699 606.38		R143	-20 028.09	3	699 253.23	
L144	-22 429.33	3	699 597.45		R144	-19 928.88	3	699 239.59	
L145	-21 948.90	3	699 533.25		R145	-19 813.87	3	699 221.07	
L146	-21 808.27	3	699 514.55		R146	-19 791.21	3	699 217.43	
L147	-21 658.45	3	699 494.62		R147	-19 761.24	3	699 213.28	
L148	-21 210.77	3	699 435.61		R148	-19 294.35	3	699 150.97	
L149	-20 028.97	3	699 278.09		R149	-18 925.06	3	699 101.99	
L150	-19 831.75	3	699 251.58		R150	-18 883.37	3	699 108.85	
L151	-19 462.23	3	699 201.97		R151	-18 178.29	3	699 014.51	
L152	-19 313.42	3	699 184.97		R152	-18 162.00	3	699 024.64	
L153	-19 115.83	3	699 161.88		R153	-18 112.45	3	699 016.24	
					Vel Sheet	18	Van of	23	P1225/22

PADRESERWE KOÖRDINATE / ROAD RESERVE CO-ORDINATES									
LINKERKANT/LEFT HAND SIDE					REGTERKANT/RIGHT HAND SIDE				
	Y		X	WG 25°		Y		X	
L154	-18 181.14	3	699 052.57		R154	-18 053.54	3	699 004.45	
L155	-18 169.13	3	699 051.00		R155	-17 994.87	3	698 990.38	
L156	-18 150.94	3	699 048.61		R156	-17 936.90	3	698 974.07	
L157	-18 112.56	3	699 042.01		R157	-17 879.13	3	698 955.10	
L158	-18 069.71	3	699 033.84		R158	-17 822.60	3	698 934.06	
L159	-18 046.96	3	699 029.10		R159	-17 766.72	3	698 910.67	
L160	-17 989.97	3	699 015.17		R160	-17 712.62	3	698 884.52	
L161	-17 930.84	3	698 998.50		R161	-17 631.21	3	698 839.53	
L162	-17 866.39	3	698 977.49		R162	-17 502.76	3	698 760.05	
L163	-17 813.75	3	698 957.78		R163	-17 297.03	3	698 627.34	
L164	-17 755.91	3	698 933.72		R164	-16 995.55	3	698 432.81	
L165	-17 703.31	3	698 909.03		R165	-16 934.87	3	698 393.17	
L166	-17 652.58	3	698 882.96		R166	-16 823.35	3	698 321.88	
L167	-17 646.95	3	698 880.07		R167	-15 328.91	3	697 358.79	
L168	-17 626.31	3	698 867.42		R168	-15 311.05	3	697 347.27	
L169	-17 556.83	3	698 824.85		R169	-15 098.76	3	697 210.36	
L170	-17 487.70	3	698 780.32		R170	-15 051.94	3	697 180.16	
L171	-16 909.86	3	698 408.03		R171	-14 483.09	3	696 813.81	
L172	-16 794.29	3	698 333.88		R172	-14 410.77	3	696 767.17	
L173	-16 605.87	3	698 212.02		R173	-14 196.77	3	696 629.16	
L174	-15 303.66	3	697 372.67		R174	-14 017.82	3	696 513.75	
L175	-15 292.01	3	697 365.16		R175	-13 521.41	3	696 193.15	
L176	-15 098.26	3	697 240.14		R176	-13 508.65	3	696 184.93	
L177	-15 046.30	3	697 206.62		R177	-13 267.35	3	696 029.63	
L178	-14 674.14	3	696 967.08		R178	-12 906.22	3	695 797.22	
L179	-14 396.03	3	696 787.75		R179	-12 558.70	3	695 571.18	
L180	-14 188.21	3	696 653.74		R180	-12 249.17	3	695 364.62	
L181	-14 184.10	3	696 651.24		R181	-12 010.69	3	695 206.64	
L182	-14 006.71	3	696 543.25		R182	-11 551.40	3	694 901.03	
L183	-13 487.30	3	696 208.73		R183	-11 472.77	3	694 848.71	
L184	-13 248.96	3	696 055.25		R184	-11 389.37	3	694 801.75	
L185	-12 866.38	3	695 808.91		R185	-11 349.70	3	694 783.36	
L186	-12 536.00	3	695 591.31		R186	-11 267.23	3	694 753.54	
L187	-12 234.05	3	695 391.15		R187	-10 986.60	3	694 666.82	
L188	-11 974.98	3	695 219.86		R188	-10 797.28	3	694 607.78	
L189	-11 536.76	3	694 930.10		R189	-10 340.34	3	694 466.07	
L190	-11 478.79	3	694 894.24		R190	-10 182.72	3	694 419.41	
L191	-11 459.97	3	694 883.47		R191	-10 119.92	3	694 405.19	
L192	-11 420.11	3	694 861.57		R192	-10 104.55	3	694 401.85	
L193	-11 386.97	3	694 844.48		R193	-10 072.13	3	694 395.61	
L194	-11 336.70	3	694 820.37		R194	-10 037.43	3	694 389.81	
L195	-11 257.52	3	694 787.19		R195	-10 008.49	3	694 385.87	
L196	-10 978.36	3	694 696.86		R196	-9 517.62	3	694 332.27	
L197	-10 329.91	3	694 496.58		R197	-9 231.09	3	694 301.43	
L198	-10 183.49	3	694 452.69		R198	-9 090.76	3	694 286.32	
L199	-10 139.81	3	694 441.85		R199	-8 636.66	3	694 237.90	
L200	-10 110.41	3	694 435.44		R200	-8 213.10	3	694 192.34	
L201	-10 080.98	3	694 429.41		R201	-7 700.40	3	694 137.33	
L202	-10 058.66	3	694 425.36		R202	-7 568.46	3	694 123.39	
L203	-10 014.56	3	694 418.19		R203	-7 273.14	3	694 092.19	
L204	-9 918.85	3	694 407.01		R204	-7 024.53	3	694 064.67	
					<div> <div>Vel</div> <div>19</div> <div>Van</div> <div>23</div> <div>Sheet</div> <div>of</div> <div>P1225/22</div> </div>				

PADRESERWE KOÖRDINATE / ROAD RESERVE CO-ORDINATES									
LINKERKANT/LEFT HAND SIDE					REGTERKANT/RIGHT HAND SIDE				
	Y		X	WG 25º		Y		X	
L205	-9	250.95	3	694	335.30	R205	-6	583.95	3 694 017.81
L206	-9	091.23	3	694	318.15	R206	-6	355.05	3 693 993.40
L207	-8	434.45	3	694	247.72	R207	-6	287.65	3 693 985.34
L208	-7	960.69	3	694	196.80	R208	-6	182.99	3 693 969.80
L209	-7	587.97	3	694	157.11	R209	-6	099.56	3 693 954.82
L210	-7	486.38	3	694	146.30	R210	-5	285.27	3 693 783.29
L211	-7	258.91	3	694	122.22	R211	-5	063.12	3 693 736.60
L212	-7	023.21	3	694	096.31	R212	-4	854.77	3 693 692.81
L213	-6	342.87	3	694	024.06	R213	-4	404.46	3 693 597.98
L214	-6	192.22	3	694	003.22	R214	-4	105.20	3 693 534.74
L215	-6	155.35	3	693	996.89	R215	-4	033.48	3 693 522.44
L216	-5	929.54	3	693	951.40	R216	-3	961.29	3 693 517.25
L217	-5	069.13	3	693	770.12	R217	-3	902.75	3 693 517.18
L218	-5	059.76	3	693	768.15	R218	-3	859.26	3 693 520.57
L219	-4	178.19	3	693	582.48	R219	-3	774.12	3 693 533.98
L220	-4	071.40	3	693	560.39	R220	-3	732.26	3 693 544.07
L221	-4	017.36	3	693	552.36	R221	-3	718.79	3 693 547.71
L222	-3	989.82	3	693	550.01	R222	-3	678.22	3 693 560.58
L223	-3	948.64	3	693	548.26	R223	-3	638.13	3 693 576.18
L224	-3	921.47	3	693	548.28	R224	-3	599.85	3 693 593.06
L225	-3	900.72	3	693	548.79	R225	-3	585.78	3 693 600.19
L226	-3	853.50	3	693	553.31	R226	-3	559.78	3 693 613.73
L227	-3	806.02	3	693	559.68	R227	-3	547.85	3 693 620.72
L228	-3	761.07	3	693	568.80	R228	-3	536.78	3 693 627.27
L229	-3	705.41	3	693	583.83	R229	-3	523.84	3 693 635.29
L230	-3	679.76	3	693	593.51	R230	-3	489.29	3 693 658.22
L231	-3	660.08	3	693	601.24	R231	-3	466.19	3 693 675.54
L232	-3	647.46	3	693	606.60	R232	-3	455.27	3 693 684.16
L233	-3	609.66	3	693	623.40	R233	-3	434.04	3 693 701.67
L234	-3	596.91	3	693	629.39	R234	-3	401.54	3 693 730.35
L235	-3	572.73	3	693	642.18	R235	-3	371.17	3 693 760.88
L236	-3	543.50	3	693	659.77	R236	-3	352.65	3 693 781.81
L237	-3	526.00	3	693	670.64	R237	-3	316.01	3 693 824.91
L238	-3	498.30	3	693	690.57	R238	-3	244.84	3 693 916.21
L239	-3	471.34	3	693	711.03	R239	-3	203.74	3 693 957.69
L240	-3	404.24	3	693	770.60	R240	-3	170.01	3 693 986.68
L241	-3	352.57	3	693	829.78	R241	-3	131.61	3 694 012.20
L242	-3	252.19	3	693	956.29	R242	-3	094.17	3 694 033.16
L243	-3	232.44	3	693	974.68	R243	-3	044.76	3 694 053.85
L244	-3	205.29	3	693	998.44	R244	-2	997.51	3 694 068.03
L245	-3	183.23	3	694	015.59	R245	-2	929.49	3 694 080.85
L246	-3	173.58	3	694	023.09	R246	-2	925.79	3 694 080.96
L247	-3	128.40	3	694	051.86	R247	-2	870.30	3 694 082.73
L248	-3	080.67	3	694	074.69	R248	-2	805.26	3 694 076.20
L249	-2	981.51	3	694	104.53	R249	-2	750.80	3 694 063.63
L250	-2	977.70	3	694	105.00	R250	-2	699.08	3 694 045.25
L251	-2	903.06	3	694	114.22	R251	-2	661.63	3 694 028.03
L252	-2	844.59	3	694	113.04	R252	-2	609.43	3 693 995.68
L253	-2	785.38	3	694	104.99	R253	-2	591.98	3 693 982.91
L254	-2	743.98	3	694	094.65	R254	-2	550.45	3 693 946.31
L255	-2	688.75	3	694	076.01	R255	-2	513.37	3 693 905.82
					<div>Vel 20 Van 23 Sheet of P1225/22</div>				

PADRESERWE KOÖRDINATE / ROAD RESERVE CO-ORDINATES						
LINKERKANT/LEFT HAND SIDE				REGTERKANT/RIGHT HAND SIDE		
	Y	X	WG 25 <sup>a</sup>		Y	X
L256	-2 636.27	3 694 050.47		R256	-2 493.94	3 693 881.07
L257	-2 593.18	3 694 022.95		R257	-2 394.68	3 693 754.61
L258	-2 539.24	3 693 979.34		R258	-2 349.00	3 693 704.14
L259	-2 498.73	3 693 937.39		R259	-2 334.10	3 693 689.74
L260	-2 430.93	3 693 851.91		R260	-2 309.80	3 693 666.26
L261	-2 357.49	3 693 759.31		R261	-2 255.91	3 693 623.06
L262	-2 320.43	3 693 720.53		R262	-2 209.93	3 693 592.59
L263	-2 298.41	3 693 697.48		R263	-2 161.72	3 693 565.96
L264	-2 209.94	3 693 629.18		R264	-2 124.25	3 693 547.83
L265	-2 122.64	3 693 580.01		R265	-2 099.06	3 693 536.37
L266	-2 028.62	3 693 544.48		R266	-2 033.84	3 693 513.35
L267	-1 793.66	3 693 486.50		R267	-1 804.49	3 693 456.55
L268	-1 602.34	3 693 439.83		R268	-1 626.08	3 693 412.93
L269	-1 492.56	3 693 413.02		R269	-1 431.93	3 693 365.77
L270	-1 356.25	3 693 379.73		R270	-1 391.46	3 693 356.52
L271	- 852.37	3 693 298.84		R271	-1 357.32	3 693 349.66
L272	- 408.93	3 693 228.11		R272	-1 349.29	3 693 348.04
L273	- 211.64	3 693 196.96		R273	-1 117.32	3 693 306.20
L274	- 154.60	3 693 191.51		R274	- 863.27	3 693 268.13
L275	94.01	3 693 184.32		R275	- 841.73	3 693 264.90
L276	151.73	3 693 182.65		R276	- 637.82	3 693 232.75
L277	249.68	3 693 179.22		R277	- 433.99	3 693 202.08
L278	391.17	3 693 156.62		R278	- 285.70	3 693 176.60
L279	678.36	3 693 084.22		R279	- 255.27	3 693 171.84
L280	859.37	3 693 061.65		R280	- 184.54	3 693 164.08
L281	1 292.48	3 693 065.30		R281	- 120.51	3 693 160.88
L282	1 435.27	3 693 074.12		R282	88.53	3 693 152.58
L283	1 527.67	3 693 092.93		R283	163.65	3 693 149.59
L284	1 625.68	3 693 117.47		R284	199.21	3 693 148.61
L285	2 095.75	3 693 279.83		R285	260.36	3 693 144.32
L286	2 193.32	3 693 302.84		R286	300.44	3 693 140.01
L287	2 321.70	3 693 319.53		R287	353.38	3 693 133.14
L288	2 386.71	3 693 319.59		R288	402.62	3 693 120.90
L289	2 401.86	3 693 318.41		R289	455.44	3 693 108.87
L290	2 500.53	3 693 310.73		R290	521.32	3 693 091.65
L291	2 778.33	3 693 262.24		R291	626.96	3 693 064.45
L292	2 875.00	3 693 245.04		R292	694.55	3 693 050.78
L293	2 958.08	3 693 230.26		R293	803.00	3 693 035.65
L294	3 069.65	3 693 211.30		R294	872.04	3 693 030.94
L295	3 111.50	3 693 204.19		R295	1 312.44	3 693 034.36
L296	3 172.11	3 693 196.28		R296	1 381.11	3 693 038.82
L297	3 225.53	3 693 192.08		R297	1 422.20	3 693 042.77
L298	3 293.09	3 693 190.10		R298	1 531.22	3 693 058.54
L299	3 397.62	3 693 192.51		R299	1 609.10	3 693 080.79
L300	3 516.46	3 693 196.58		R300	1 835.77	3 693 156.78
L301	3 602.90	3 693 198.35		R301	2 107.21	3 693 249.43
L302	3 681.93	3 693 192.50		R302	2 227.11	3 693 277.22
L303	3 768.74	3 693 174.83		R303	2 254.46	3 693 280.60
L304	3 838.21	3 693 150.82		R304	2 295.25	3 693 285.10
L305	3 893.70	3 693 124.61		R305	2 395.72	3 693 290.28
L306	3 945.79	3 693 093.64		R306	2 497.00	3 693 274.89
				Vel Sheet	21 of	Van 23 P1225/22

PADRESERWE KOÖRDINATE / ROAD RESERVE CO-ORDINATES						
LINKERKANT/LEFT HAND SIDE				REGTERKANT/RIGHT HAND SIDE		
	Y	X	WG 25 <sup>a</sup>		Y	X
L307	3 972.38	3 693 072.21		R307	2 705.99	3 693 240.76
L308	4 023.91	3 693 030.69		R308	2 862.22	3 693 213.72
L309	4 062.75	3 692 991.41		R309	2 888.49	3 693 209.18
L310	4 089.51	3 692 959.89		R310	3 053.45	3 693 181.37
L311	4 479.42	3 692 441.84		R311	3 076.87	3 693 177.42
L312	4 566.19	3 692 325.94		R312	3 145.11	3 693 167.77
L313	4 603.22	3 692 279.22		R313	3 186.28	3 693 163.30
L314	4 657.15	3 692 214.95		R314	3 227.26	3 693 160.28
L315	4 679.09	3 692 190.05		R315	3 268.18	3 693 158.83
L316	4 723.60	3 692 141.26		R316	3 322.76	3 693 158.70
L317	4 765.81	3 692 097.41		R317	3 500.35	3 693 163.91
L318	4 790.69	3 692 072.75		R318	3 609.89	3 693 165.69
L319	5 100.52	3 691 765.73		R319	3 678.53	3 693 160.79
L320	5 289.55	3 691 579.18		R320	3 745.91	3 693 146.67
L321	5 319.61	3 691 553.04		R321	3 785.95	3 693 135.55
L322	5 358.35	3 691 521.67		R322	3 839.18	3 693 115.24
L323	5 385.50	3 691 502.14		R323	3 872.14	3 693 096.99
L324	5 425.65	3 691 475.92		R324	3 907.65	3 693 077.33
L325	5 484.43	3 691 442.73		R325	3 950.88	3 693 050.93
L326	5 777.99	3 691 310.29		R326	3 954.10	3 693 048.19
L327	5 831.62	3 691 289.92		R327	4 013.69	3 692 997.55
L328	5 844.60	3 691 286.37		R328	4 253.82	3 692 670.30
L329	5 863.30	3 691 281.26		R329	4 621.92	3 692 196.24
L330	5 916.85	3 691 270.75		R330	4 768.79	3 692 050.75
L331	6 046.31	3 691 254.63		R331	5 231.46	3 691 592.79
L332	6 127.82	3 691 233.32		R332	5 269.64	3 691 555.51
L333	6 153.07	3 691 225.21		R333	5 315.90	3 691 515.75
L334	6 324.93	3 691 142.03		R334	5 374.47	3 691 474.23
L335	6 433.77	3 691 109.40		R335	5 391.61	3 691 463.20
L336	6 519.80	3 691 100.68		R336	5 465.22	3 691 417.26
L337	6 602.14	3 691 102.12		R337	5 489.49	3 691 404.69
L338	6 623.63	3 691 103.76		R338	5 532.21	3 691 385.10
L339	6 772.40	3 691 119.73		R339	5 788.32	3 691 273.41
L340	6 844.60	3 691 122.56		R340	5 812.46	3 691 264.37
L341	6 901.74	3 691 118.10		R341	5 837.52	3 691 257.16
L342	7 060.20	3 691 095.51		R342	5 866.65	3 691 248.77
L343	7 183.96	3 691 074.61		R343	5 893.45	3 691 243.03
L344	7 282.16	3 691 050.52		R344	5 907.55	3 691 240.44
L345	7 325.29	3 691 034.72		R345	5 957.32	3 691 233.71
L346	7 377.66	3 691 006.81		R346	6 032.11	3 691 225.08
L347	7 467.11	3 690 955.81		R347	6 061.54	3 691 221.92
L348	7 519.58	3 690 923.26		R348	6 110.53	3 691 208.24
L349	7 564.76	3 690 897.77		R349	6 224.90	3 691 154.07
L350	7 624.84	3 690 868.66		R350	6 261.80	3 691 134.86
L351	7 679.39	3 690 848.81		R351	6 297.36	3 691 111.98
L352	7 834.06	3 690 812.34		R352	6 309.32	3 691 105.92
L353	8 409.53	3 690 691.20		R353	6 361.50	3 691 085.77
L354	8 655.83	3 690 638.53		R354	6 374.70	3 691 081.73
L355	9 031.89	3 690 558.11		R355	6 442.32	3 691 069.78
L356	9 269.06	3 690 509.48		R356	6 455.93	3 691 068.73
L357	9 321.00	3 690 495.81		R357	6 483.64	3 691 067.87
				Vel Sheet	22 Van of	23 P1225/22

PADRESERWE KOÖRDINATE / ROAD RESERVE CO-ORDINATES							
LINKERKANT/LEFT HAND SIDE				REGTERKANT/RIGHT HAND SIDE			
	Y	X	WG 25°		Y	X	
L358	9 384.83	3 690 475.08		R369	8 418.09	3 690 656.30	
L359	9 409.69	3 690 465.31		R370	8 620.92	3 690 613.73	
L360	9 445.91	3 690 447.88		R371	8 645.72	3 690 608.46	
L361	9 525.66	3 690 398.24		R372	8 990.25	3 690 535.21	
L362	9 557.98	3 690 372.78		R373	9 259.78	3 690 477.84	
L363	9 577.63	3 690 356.19		R374	9 327.56	3 690 461.26	
L364	9 597.66	3 690 337.83		R375	9 382.31	3 690 441.68	
L365	9 625.25	3 690 308.60		R376	9 416.84	3 690 425.14	
L366	9 721.33	3 690 215.33		R377	9 487.41	3 690 383.60	
L367	9 739.13	3 690 200.23		R378	9 531.82	3 690 350.75	
L368	9 773.46	3 690 172.98		R379	9 563.43	3 690 324.69	
L369	9 795.45	3 690 157.41		R380	9 595.64	3 690 293.17	
L370	9 842.23	3 690 130.64		R381	9 680.19	3 690 206.89	
L371	9 866.57	3 690 119.32		R382	9 690.12	3 690 197.37	
L372	10 965.09	3 689 643.88		R383	9 700.22	3 690 188.14	
L373	10 973.11	3 689 640.27		R384	9 711.05	3 690 179.85	
L374	11 010.05	3 689 623.68		R385	9 755.22	3 690 147.11	
L375	11 034.15	3 689 611.69		R386	9 778.19	3 690 131.96	
L376	11 058.67	3 689 598.61		R387	9 813.54	3 690 110.33	
L377	11 099.14	3 689 574.70		R388	9 850.76	3 690 091.58	
L378	11 117.47	3 689 563.18		R389	10 947.70	3 689 617.00	
L379	11 139.85	3 689 548.06		R390	10 953.45	3 689 614.34	
L380	11 184.04	3 689 515.48		R391	11 014.05	3 689 586.29	
L381	11 271.10	3 689 448.07		R392	11 050.46	3 689 567.06	
L382	11 271.43	3 689 447.73		R393	11 086.00	3 689 545.83	
L383	11 289.36	3 689 429.33		R394	11 131.05	3 689 515.97	
L384	13 583.65	3 687 657.16		R395	11 253.36	3 689 419.23	
L385	13 599.11	3 687 642.69		R396	11 394.43	3 689 310.26	
L386	15 399.87	3 686 252.00		R397	13 571.84	3 687 623.55	
L387	15 488.96	3 686 168.96		R398	15 381.00	3 686 227.26	
L388	15 571.20	3 686 063.37		R399	15 401.85	3 686 210.02	
L389	15 612.76	3 685 988.68		R400	15 431.86	3 686 182.31	
L390	15 635.65	3 685 923.40		R401	15 451.14	3 686 163.22	
L391	15 647.23	3 685 891.96		R402	15 469.42	3 686 143.96	
L392	15 654.79	3 685 865.64		R403	15 512.90	3 686 092.33	
L393	15 686.57	3 685 746.81		R404	15 535.85	3 686 056.45	
REGTERKANT/RIGHT HAND SIDE				R405	15 557.97	3 686 022.88	
				R406	15 586.42	3 685 962.65	
				R407	15 598.07	3 685 936.99	
				R408	15 615.13	3 685 888.66	
				R409	15 619.36	3 685 874.97	
				R410	15 629.84	3 685 836.49	
				R411	15 643.00	3 685 784.22	
				R412	15 662.38	3 685 706.02	
				R413	15 640.93	3 685 703.82	
R414	15 653.49	3 685 656.85					
				Vel Sheet	23	Van of 23	P1225/22