

---

**GOVERNMENT NOTICES • GOEWERMENTSKENNISGEWINGS**

---

**DEPARTMENT OF TRANSPORT**

NO. 4174

11 December 2023

**THE SOUTH AFRICAN NATIONAL ROADS  
AGENCY SOC LIMITED**Registration No: 1998/009584/30

---

**DECLARATION AMENDMENT OF NATIONAL ROAD N12 SECTION 15**

By virtue of Section 40 (1)(b) of The South African National Roads Agency Limited and National Roads Act, 1998 (Act No. 7 of 1998), I hereby amend Declaration No. 758 of 2007 by substituting it in its entirety with the accompanying sheets 1 to 17 of Plan No. P1207/20.

**(National Road N12 Section 15: Wolmaransstad to Klerksdorp)**



---

**MINISTER OF TRANSPORT**

DEPARTEMENT VAN VERVOER

NO. 4174

11 Desember 2023

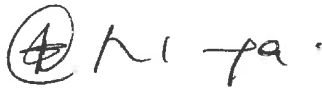
**DIE SUID-AFRIKAANSE NASIONALE  
PADAGENTSKAP MSB BEPERK**

Registrasie No: 1998/009584/30

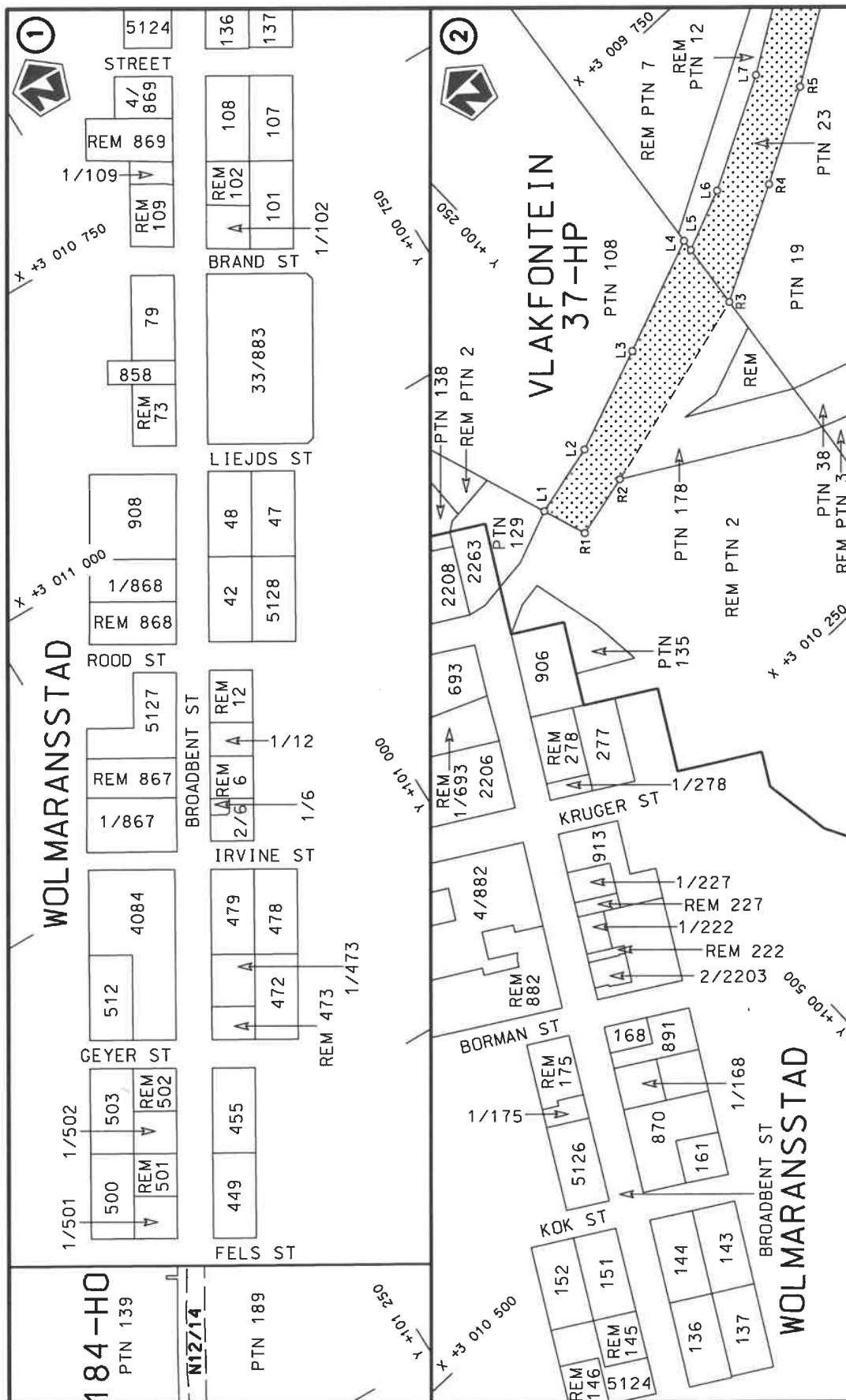
**VERKLARING WYSIGING VAN NASIONALE PAD N12 SEKSIE 15**

Kragtens Artikel 40(1)(b) van die Wet op die Suid-Afrikaanse Nasionale Padagentskap Beperk en op Nasionale Paaie, 1998 (Wet No. 7 van 1998), wysig ek hiermee Verklaring No. 758 van 2007 deur dit in sy geheel te vervang met bygaande velle 1 tot 17 van Plan No. P1207/20.

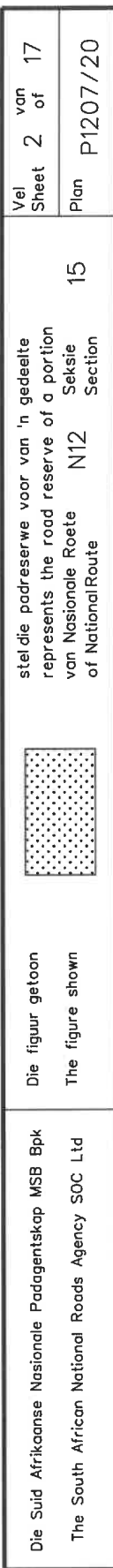
**(Nasionale Pad N12 Seksie 15: Wolmaransstad to Klerksdorp)**

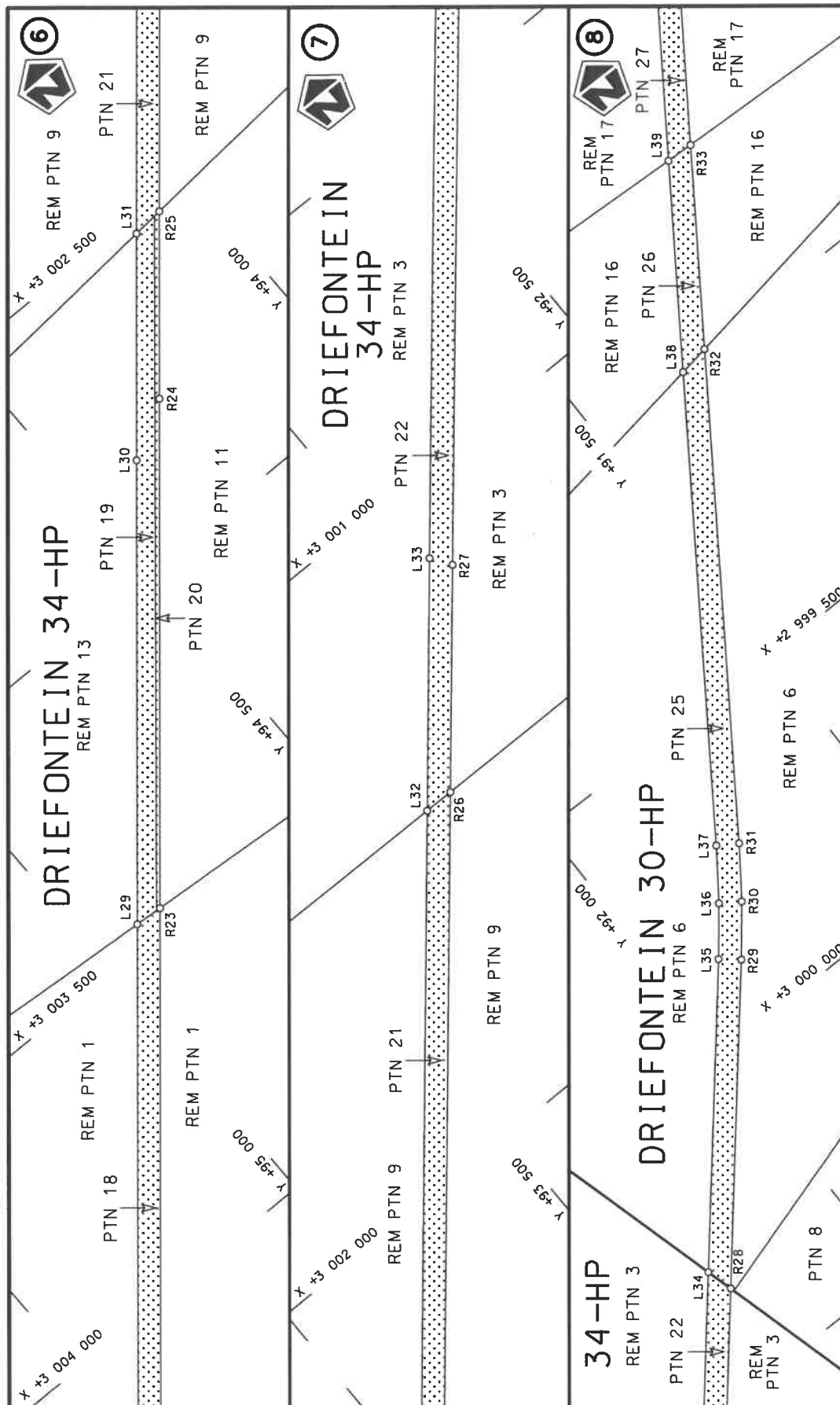



**MINISTER VAN VERVOER**

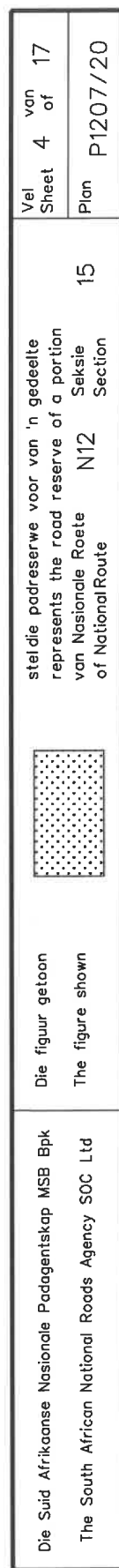


|   |                                       |   |   |                                       |
|---|---------------------------------------|---|---|---------------------------------------|
| Die Suid Afrikaanse Nasionale Padagentskap MSB Bpk<br>The South African National Roads Agency SOC Ltd | Die figuur getoon<br>The figure shown | <div data-bbox="1310 1084 1398 1234" data-label="Image"> </div> | steldie padreserwe voor van 'n gedeelte<br>represents the road reserve of a portion<br>van Nasionale Roete N12<br>of National Route | Vel<br>Sheet 1 of 17<br>Plan P1207/20 |
|---|---------------------------------------|---|---|---------------------------------------|

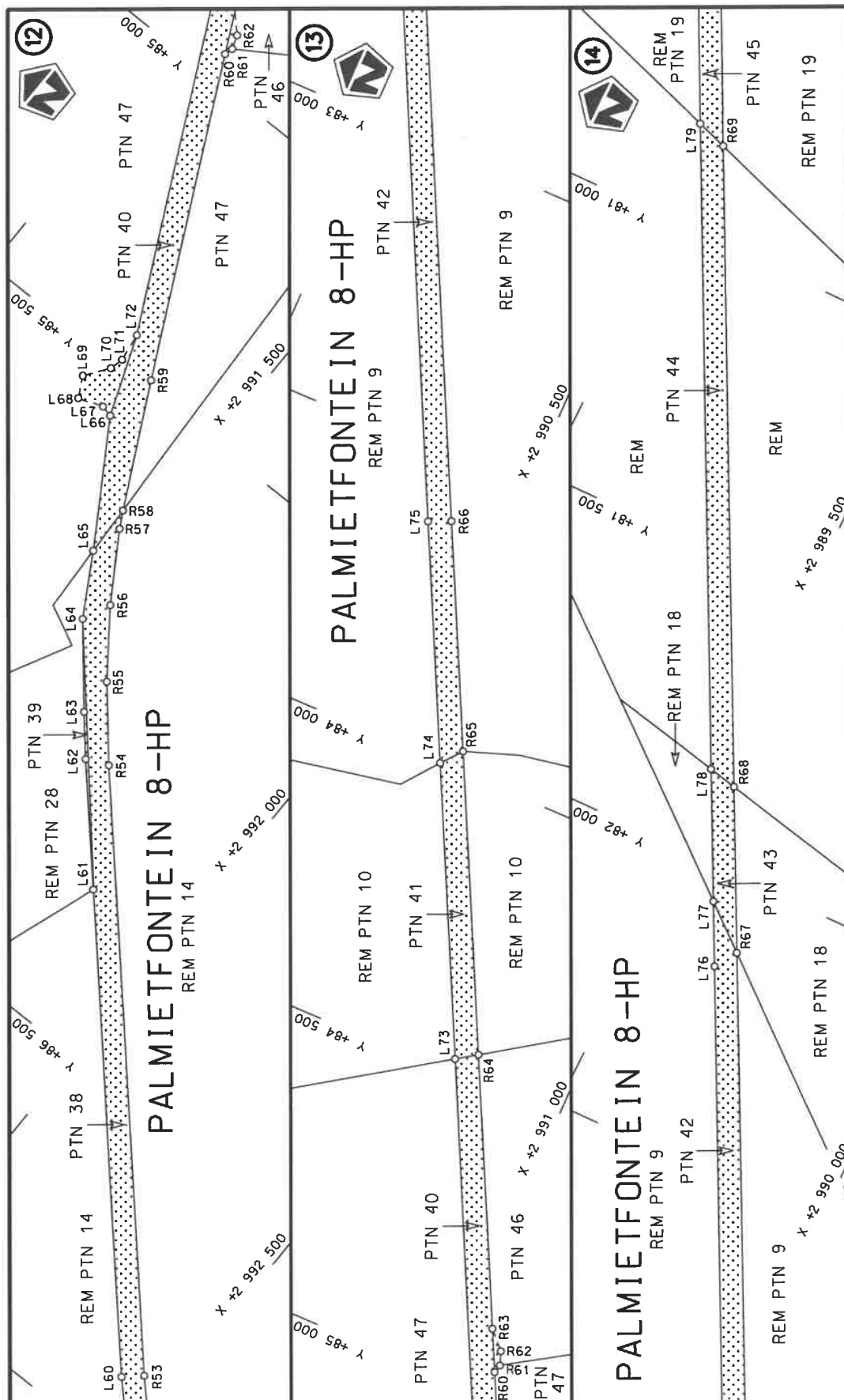




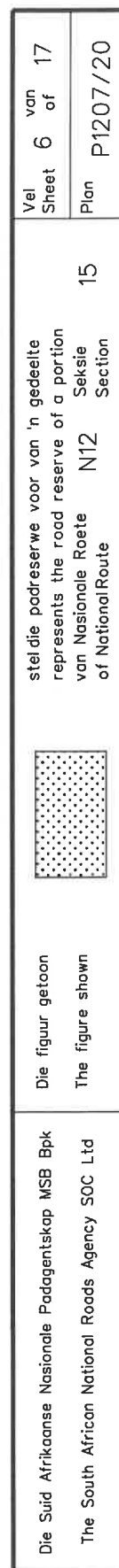
|   |                                       |   |   |                      |                         |                  |                         |
|---|---------------------------------------|---|---|----------------------|-------------------------|------------------|-------------------------|
| Die Suid Afrikaanse Nasionale Padagentskap MSB Bpk<br>The South African National Roads Agency SOC Ltd | Die figuur getoon<br>The figure shown |  | steldie padreserwe voor van 'n gedeelte<br>represents the road reserve of a portion<br>van Nasionale Roete N12<br>of National Route | Vel<br>Sheet 3 of 17 | 15<br>Sektie<br>Section | Plan<br>P1207/20 | 15<br>Sektie<br>Section |
|---|---------------------------------------|---|---|----------------------|-------------------------|------------------|-------------------------|



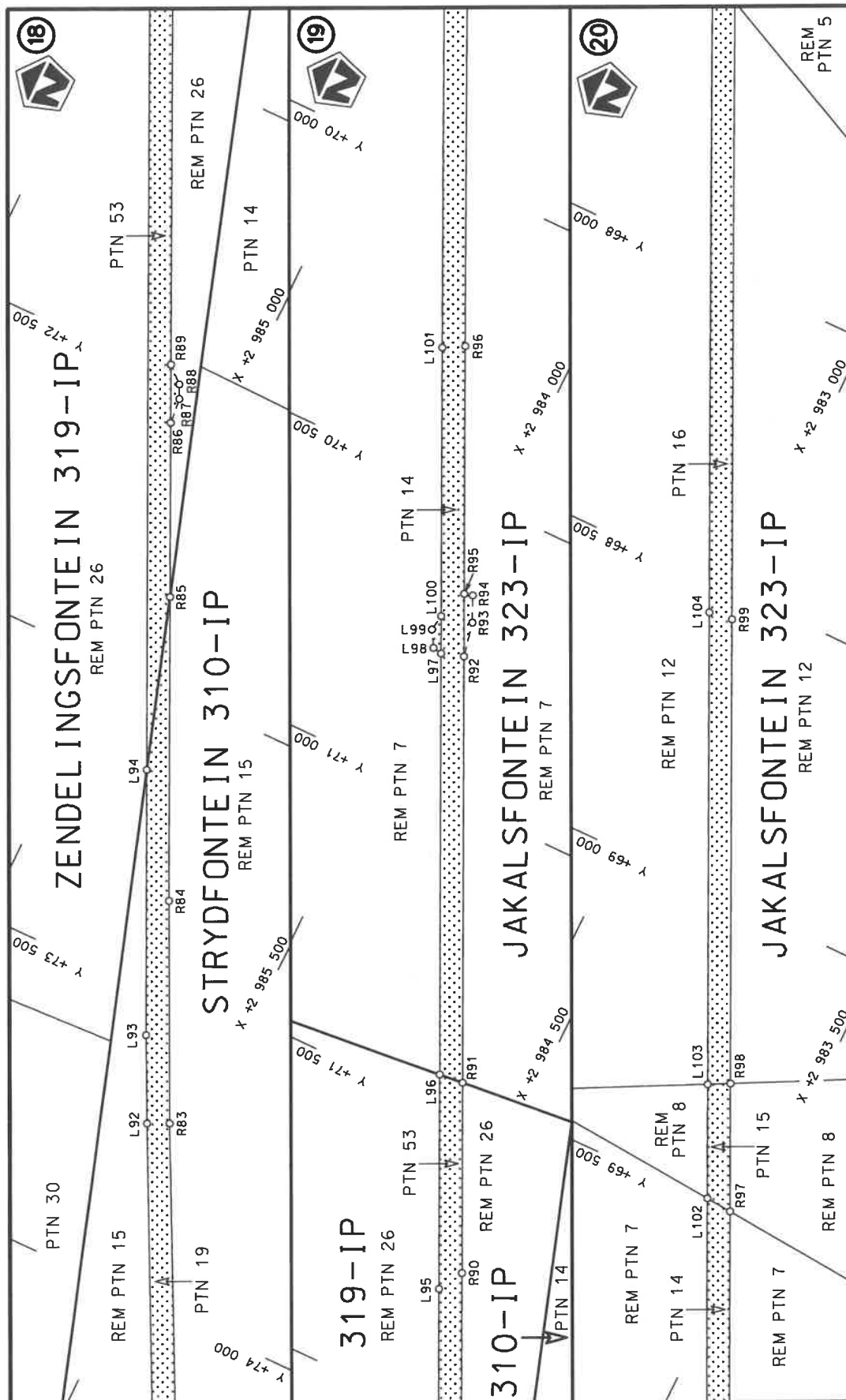




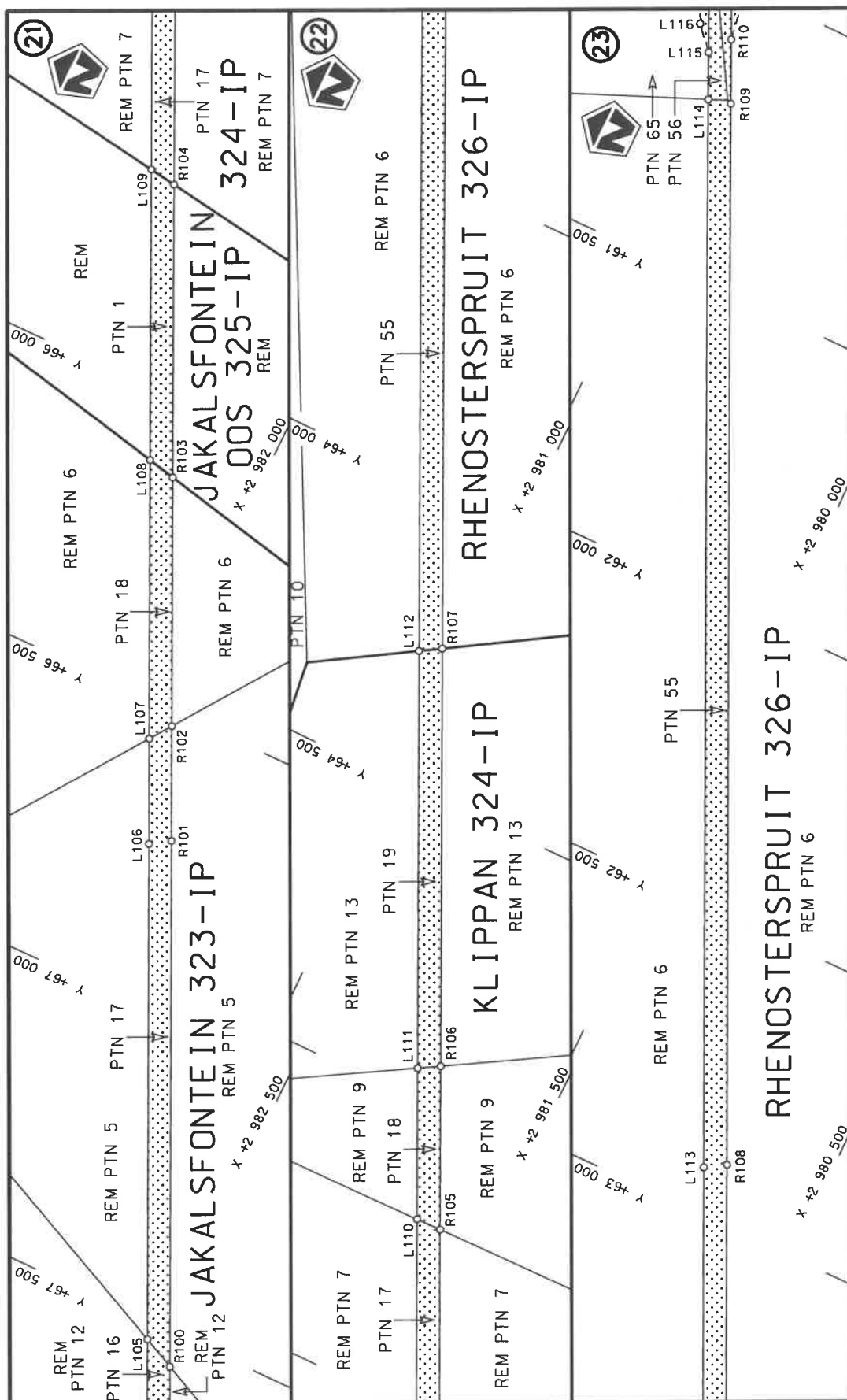
|   |                                       |  |                      |                         |               |
|---|---------------------------------------|--|----------------------|-------------------------|---------------|
| Die Suid Afrikaanse Nasionale Padagentskap MSB Bpk<br>The South African National Roads Agency SOC Ltd | Die figuur getoon<br>The figure shown | stel die padreserwe voor van 'n gedeelte<br>represents the road reserve of a portion<br>van Nasionale Roete N12<br>of National Route | Vel<br>Sheet 5 of 17 | 15<br>Sektie<br>Section | Plan P1207/20 |
|---|---------------------------------------|--|----------------------|-------------------------|---------------|




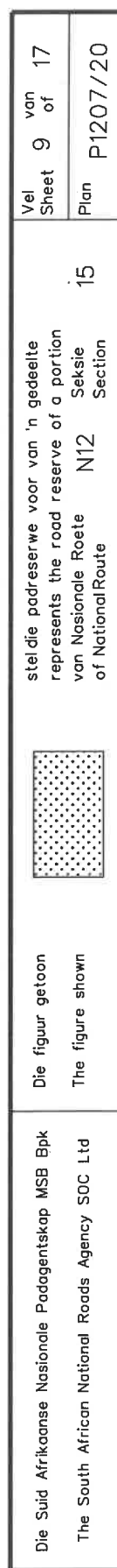


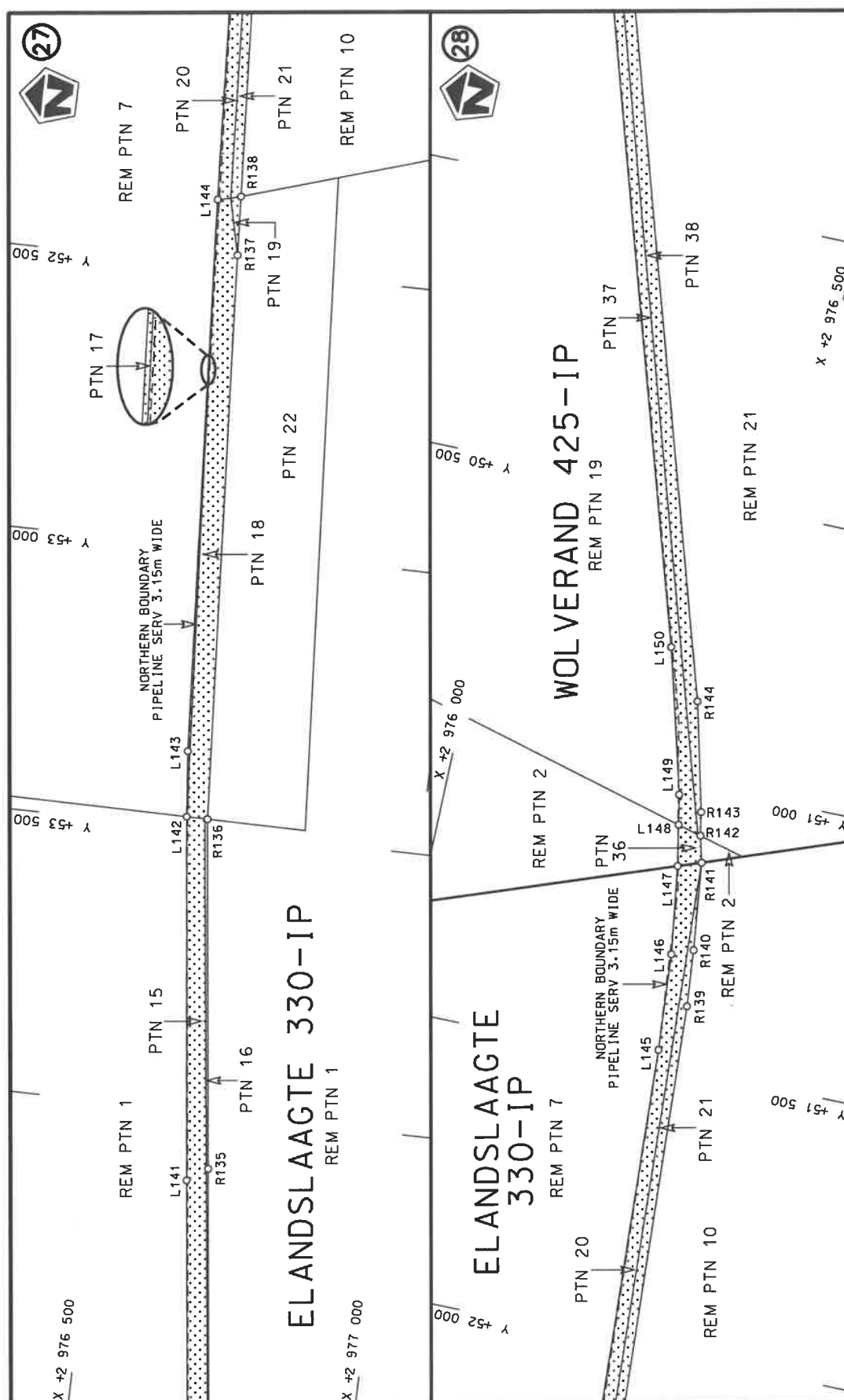


|   |                                       |   |                                |                  |                      |    |
|---|---------------------------------------|---|--------------------------------|------------------|----------------------|----|
| Die Suid Afrikaanse Nasionale Padagentskap MSB Bpk<br>The South African National Roads Agency SOC Ltd | Die figuur getoon<br>The figure shown | steldie padreserwe voor van 'n gedeelte<br>represents the road reserve of a portion<br>van Nasionale Roete<br>of National Route | 15<br>N12<br>Seksie<br>Section | Plan<br>P1207/20 | Vel<br>Sheet 7 of 17 | 17 |
|---|---------------------------------------|---|--------------------------------|------------------|----------------------|----|

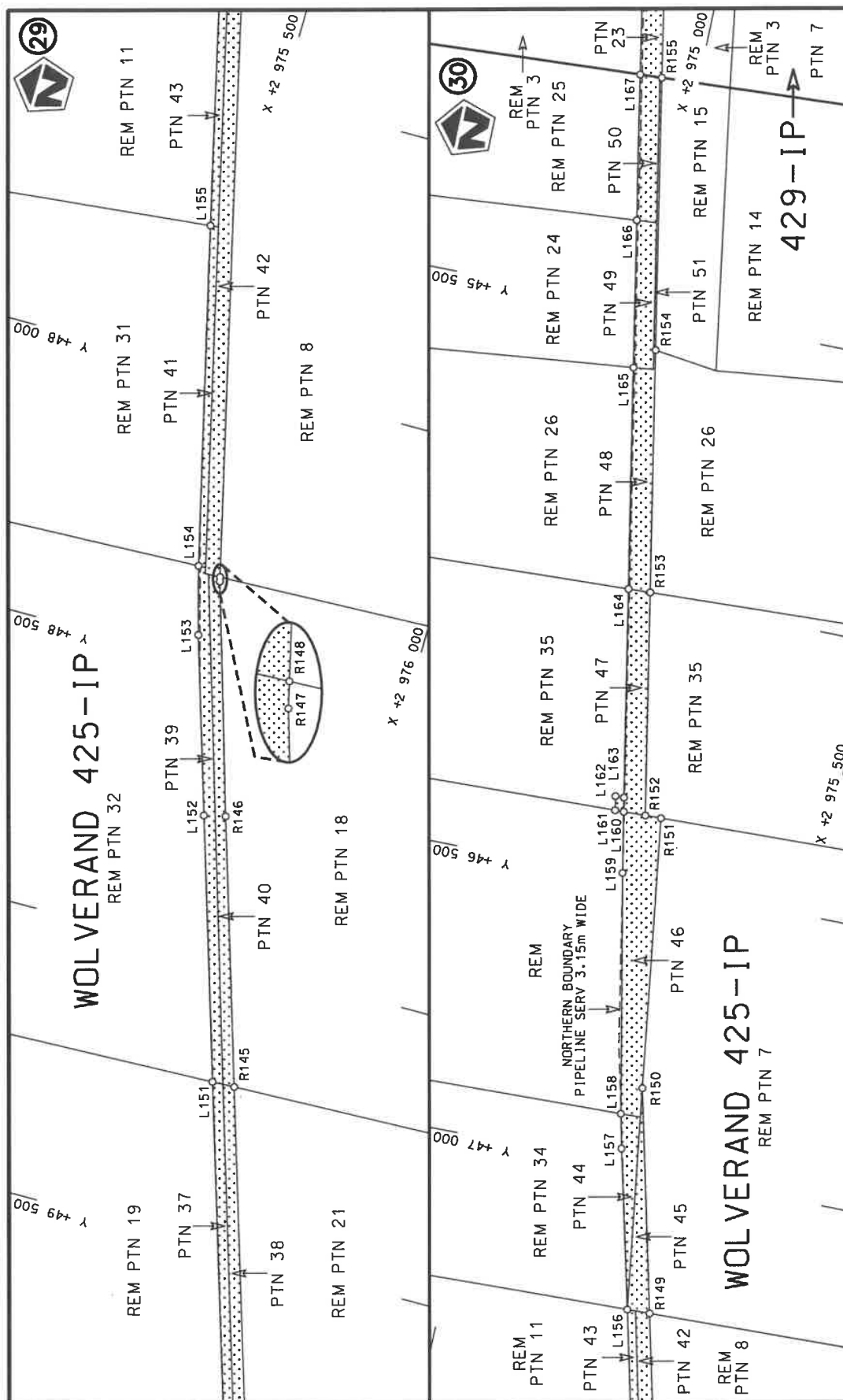



|   |                                       |   |   |                      |
|---|---------------------------------------|---|---|----------------------|
| Die Suid Afrikaanse Nasionale Padagentskap MSB Bpk<br>The South African National Roads Agency SOC Ltd | Die figuur getoon<br>The figure shown |  | steldie padreserwe voor van 'n gedeelte<br>represents the road reserve of a portion<br>van Nasionale Roete N12 Sektie<br>of National Route of Section | Vel<br>Sheet 8 of 17 |
|   |                                       |   | Plan P1207/20   |                      |



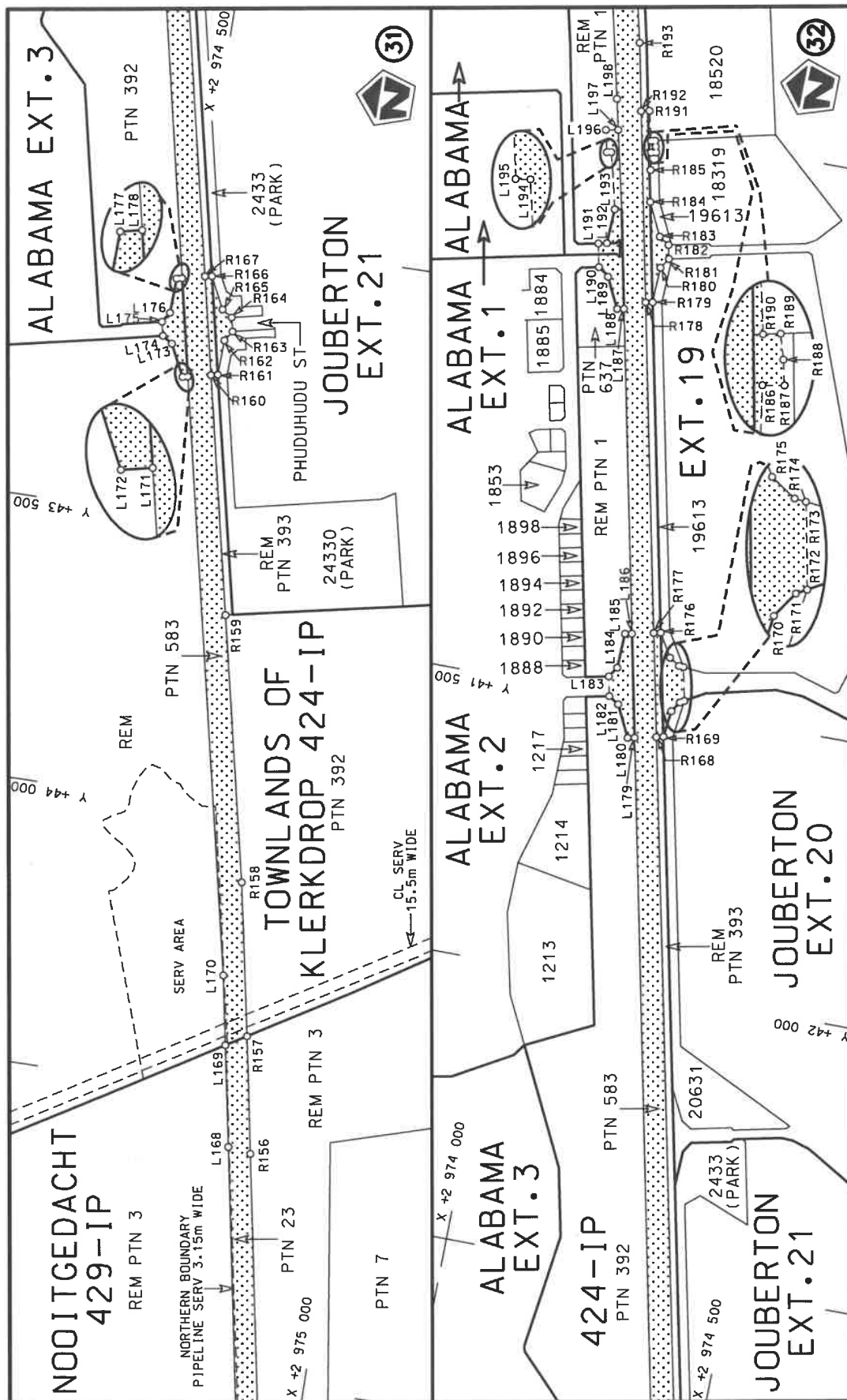


|   |                                       |  |   |
|---|---------------------------------------|--|---|
| Die Suid Afrikaanse Nasionale Padagentskap MSB Bpk<br>The South African National Roads Agency SOC Ltd | Die figuur getoon<br>The figure shown | <div data-bbox="1310 1093 1394 1234" data-label="Image"> </div> stel die padreserwe voor van 'n gedeelte<br>represents the road reserve of a portion<br>van Nasionale Roete<br>of National Route | Vel<br>Sheet 10 of 17<br>Plan<br>P1207/20 |
|---|---------------------------------------|--|---|



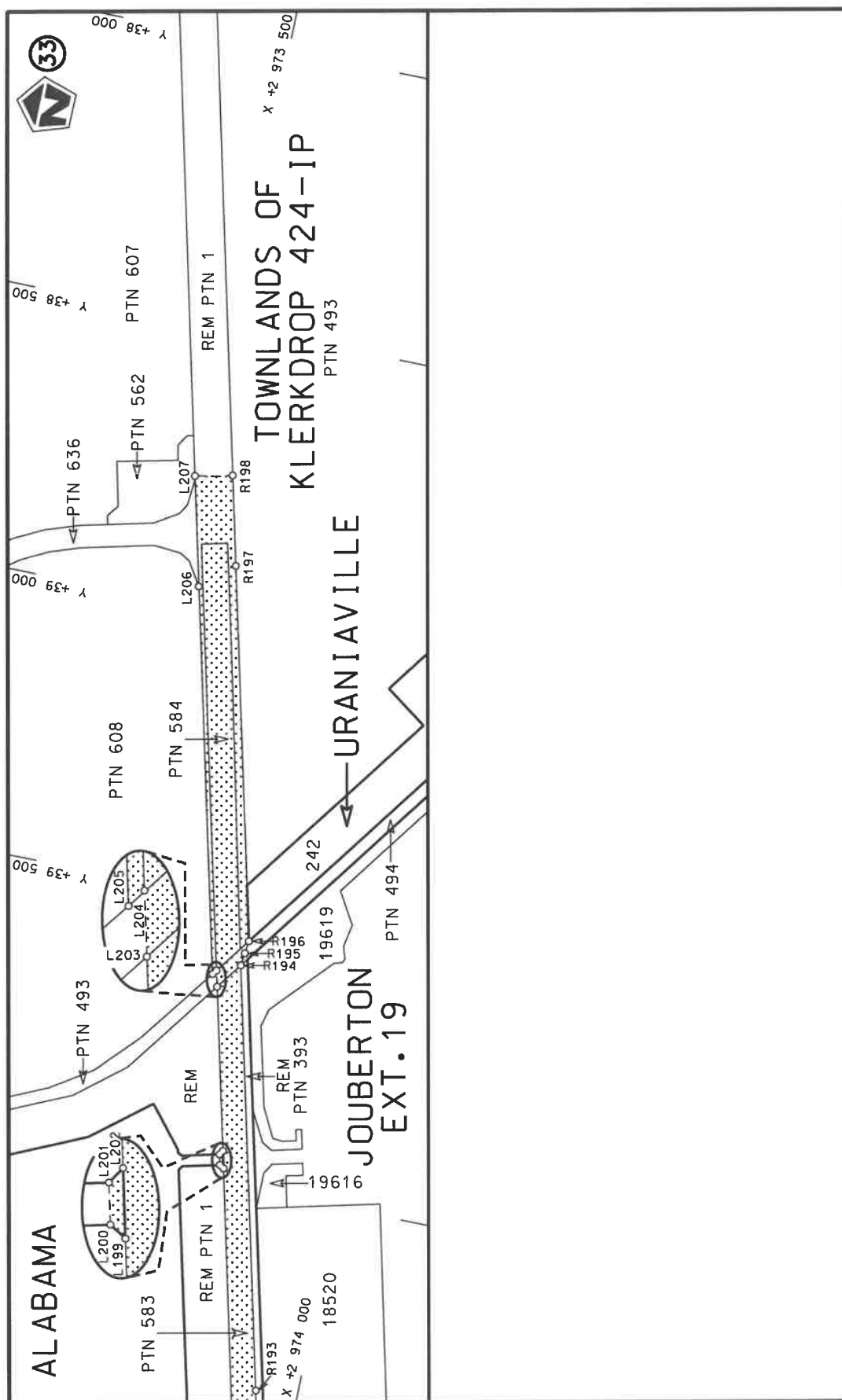
|   |                                       |   |   |                                     |
|---|---------------------------------------|---|---|-------------------------------------|
| Die Suid Afrikaanse Nasionale Padagentskap MSB Bpk<br>The South African National Roads Agency SOC Ltd | Die figuur getoon<br>The figure shown |  | steldie padreserwe voor van 'n gedeelte<br>represents the road reserve of a portion<br>van Nasionale Roete N12<br>of National Route Section | Vel Sheet 11 of 17<br>Plan P1207/20 |
|---|---------------------------------------|---|---|-------------------------------------|






|   |                                       |   |                                |                          |                               |
|---|---------------------------------------|---|--------------------------------|--------------------------|-------------------------------|
| Die Suid Afrikaanse Nasionale Padagentskap MSB Bpk<br>The South African National Roads Agency SOC Ltd | Die figuur getoon<br>The figure shown | steldie padreserwe voor van 'n gedeelte<br>represents the road reserve of a portion<br>van Nasionale Roete<br>of National Route | 15<br>N12<br>Seksie<br>Section | 12<br>van<br>Sheet<br>of | 17<br>van<br>Plan<br>P1207/20 |
|---|---------------------------------------|---|--------------------------------|--------------------------|-------------------------------|





|  |                   |  |  |              |          |    |
|--|-------------------|--|--|--------------|----------|----|
| Die Suid Afrikaanse Nasionale Padagentskap MSB Bpk | Die figuur getoon |  | stel die padreserwe voor van 'n gedeelte<br>represents the road reserve of a portion | Vel<br>Sheet | 13<br>of | 17 |
| The South African National Roads Agency SOC Ltd    | The figure shown  |  | van Nasionale Roete<br>of National Route   | Plan         | P1207/20 |    |

| PADRESERWE KOÖRDINATE / ROAD RESERVE CO-ORDINATES |            |   |            |        |   |            |   |            |  |
|---|------------|---|------------|--------|---|------------|---|------------|--|
| LINKERKANT/LEFT HAND SIDE                         |            |   |            |        | REGTERKANT/RIGHT HAND SIDE  |            |   |            |  |
|   | Y          |   | X          | WG 27° |   | Y          |   | X          |  |
| L1  | 100 378.88 | 3 | 009 999.18 |        | R1  | 100 366.82 | 3 | 010 037.52 |  |
| L2  | 100 315.89 | 3 | 009 983.40 |        | R2  | 100 311.93 | 3 | 010 023.76 |  |
| L3  | 100 225.73 | 3 | 009 948.51 |        | R3  | 100 134.64 | 3 | 009 974.98 |  |
| L4  | 100 126.03 | 3 | 009 908.22 |        | R4  | 100 037.66 | 3 | 009 923.10 |  |
| L5  | 100 127.33 | 3 | 009 918.28 |        | R5  | 99 958.55  | 3 | 009 878.86 |  |
| L6  | 100 074.51 | 3 | 009 895.77 |        | R6  | 99 863.70  | 3 | 009 818.41 |  |
| L7  | 99 979.34  | 3 | 009 844.76 |        | R7  | 99 775.15  | 3 | 009 747.51 |  |
| L8  | 99 910.16  | 3 | 009 800.27 |        | R8  | 99 694.83  | 3 | 009 670.36 |  |
| L9  | 99 814.39  | 3 | 009 726.53 |        | R9  | 99 676.06  | 3 | 009 649.12 |  |
| L10   | 99 802.80  | 3 | 009 717.60 |        | R10   | 99 621.14  | 3 | 009 586.93 |  |
| L11   | 99 723.66  | 3 | 009 642.69 |        | R11   | 99 554.52  | 3 | 009 496.91 |  |
| L12   | 99 651.62  | 3 | 009 561.34 |        | R12   | 99 347.07  | 3 | 009 188.52 |  |
| L13   | 99 587.66  | 3 | 009 474.64 |        | R13   | 99 067.46  | 3 | 008 772.85 |  |
| L14   | 99 393.14  | 3 | 009 185.53 |        | R14   | 98 173.58  | 3 | 007 444.01 |  |
| L15   | 98 649.70  | 3 | 008 080.49 |        | R15   | 98 113.92  | 3 | 007 360.15 |  |
| L16   | 98 566.98  | 3 | 007 957.53 |        | R16   | 98 049.80  | 3 | 007 279.31 |  |
| L17   | 98 187.61  | 3 | 007 393.65 |        | R17   | 97 131.02  | 3 | 006 180.45 |  |
| L18   | 98 145.77  | 3 | 007 336.09 |        | R18   | 96 874.52  | 3 | 005 873.68 |  |
| L19   | 98 080.37  | 3 | 007 253.56 |        | R19   | 96 618.14  | 3 | 005 566.98 |  |
| L20   | 97 186.58  | 3 | 006 184.60 |        | R20   | 96 367.96  | 3 | 005 267.71 |  |
| L21   | 96 917.16  | 3 | 005 862.37 |        | R21   | 96 111.46  | 3 | 004 960.87 |  |
| L22   | 96 657.42  | 3 | 005 551.61 |        | R22   | 95 486.74  | 3 | 004 213.56 |  |
| L23   | 96 382.21  | 3 | 005 222.34 |        | R23   | 94 863.68  | 3 | 003 468.24 |  |
| L24   | 96 164.98  | 3 | 004 962.44 |        | R24   | 94 286.22  | 3 | 002 777.46 |  |
| L25   | 95 573.63  | 3 | 004 254.94 |        | R25   | 94 073.95  | 3 | 002 523.61 |  |
| L26   | 95 555.27  | 3 | 004 210.22 |        | R26   | 93 191.02  | 3 | 001 467.71 |  |
| L27   | 95 539.27  | 3 | 004 190.34 |        | R27   | 92 933.50  | 3 | 001 159.74 |  |
| L28   | 95 499.37  | 3 | 004 166.09 |        | R28   | 92 247.21  | 3 | 000 339.18 |  |
| L29   | 94 912.74  | 3 | 003 464.62 |        | R29   | 91 873.85  | 2 | 999 892.77 |  |
| L30   | 94 386.39  | 3 | 002 835.24 |        | R30   | 91 809.74  | 2 | 999 812.08 |  |
| L31   | 94 129.51  | 3 | 002 527.89 |        | R31   | 91 749.88  | 2 | 999 728.25 |  |
| L32   | 93 243.18  | 3 | 001 467.40 |        | R32   | 91 259.43  | 2 | 999 002.60 |  |
| L33   | 92 957.05  | 3 | 001 125.06 |        | R33   | 91 057.14  | 2 | 998 703.31 |  |
| L34   | 92 260.21  | 3 | 000 292.18 |        | R34   | 90 599.00  | 2 | 998 025.46 |  |
| L35   | 91 904.50  | 2 | 999 867.04 |        | R35   | 90 563.57  | 2 | 997 998.61 |  |
| L36   | 91 843.23  | 2 | 999 789.74 |        | R36   | 90 548.81  | 2 | 997 977.24 |  |
| L37   | 91 783.81  | 2 | 999 706.49 |        | R37   | 90 534.09  | 2 | 997 929.42 |  |
| L38   | 91 314.06  | 2 | 999 011.52 |        | R38   | 90 086.44  | 2 | 997 267.10 |  |
| L39   | 91 104.47  | 2 | 998 701.45 |        | R39   | 89 720.66  | 2 | 996 725.91 |  |
| L40   | 90 603.66  | 2 | 997 960.52 |        | R40   | 89 233.91  | 2 | 996 006.72 |  |
| L41   | 90 475.85  | 2 | 997 771.43 |        | R41   | 89 090.22  | 2 | 995 794.40 |  |
| L42   | 90 458.93  | 2 | 997 715.79 |        | R42   | 88 859.62  | 2 | 995 453.69 |  |
| L43   | 90 441.06  | 2 | 997 693.04 |        | R43   | 88 529.96  | 2 | 994 964.31 |  |
| L44   | 90 404.53  | 2 | 997 665.91 |        | R44   | 88 419.63  | 2 | 994 794.76 |  |
| L45   | 90 099.83  | 2 | 997 215.12 |        | R45   | 88 264.05  | 2 | 994 547.00 |  |
| L46   | 89 781.99  | 2 | 996 744.91 |        | R46   | 87 647.48  | 2 | 993 565.06 |  |
| L47   | 89 747.68  | 2 | 996 694.14 |        | R47   | 87 429.47  | 2 | 993 217.85 |  |
| L48   | 89 253.74  | 2 | 995 963.20 |        | R48   | 87 206.07  | 2 | 992 861.92 |  |
| L49   | 89 152.41  | 2 | 995 813.26 |        | R49   | 87 130.84  | 2 | 992 750.68 |  |
| L50   | 88 849.04  | 2 | 995 364.32 |        | R50   | 87 102.65  | 2 | 992 714.55 |  |
| L51   | 88 565.35  | 2 | 994 944.51 |        | R51   | 87 048.25  | 2 | 992 644.82 |  |
|   |            |   |            |        | <div> <div>Vel Sheet</div> <div>14</div> <div>Van of</div> <div>17</div> <div>P1207/20</div> </div> |            |   |            |  |

| PADRESERWE KOÖRDINATE / ROAD RESERVE CO-ORDINATES |           |   |            |                    |   |           |   |            |  |
|---|-----------|---|------------|--------------------|---|-----------|---|------------|--|
| LINKERKANT/LEFT HAND SIDE                         |           |   |            |                    | REGTERKANT/RIGHT HAND SIDE  |           |   |            |  |
|   | Y         |   | X          | WG 27 <sup>o</sup> |   | Y         |   | X          |  |
| L52   | 88 454.42 | 2 | 994 775.03 |                    | R52   | 86 958.62 | 2 | 992 544.76 |  |
| L53   | 88 294.53 | 2 | 994 520.38 |                    | R53   | 86 862.48 | 2 | 992 450.95 |  |
| L54   | 87 691.42 | 2 | 993 559.82 |                    | R54   | 86 059.75 | 2 | 991 719.45 |  |
| L55   | 87 455.04 | 2 | 993 183.35 |                    | R55   | 85 946.82 | 2 | 991 622.98 |  |
| L56   | 87 240.11 | 2 | 992 840.91 |                    | R56   | 85 837.48 | 2 | 991 542.15 |  |
| L57   | 87 150.58 | 2 | 992 703.99 |                    | R57   | 85 722.28 | 2 | 991 469.05 |  |
| L58   | 87 078.62 | 2 | 992 618.69 |                    | R58   | 85 693.35 | 2 | 991 453.25 |  |
| L59   | 86 987.32 | 2 | 992 516.99 |                    | R59   | 85 483.11 | 2 | 991 345.98 |  |
| L60   | 86 889.31 | 2 | 992 421.40 |                    | R60   | 84 953.44 | 2 | 991 080.63 |  |
| L61   | 86 248.11 | 2 | 991 837.20 |                    | R61   | 84 938.67 | 2 | 991 084.49 |  |
| L62   | 86 076.51 | 2 | 991 680.85 |                    | R62   | 84 914.79 | 2 | 991 075.78 |  |
| L63   | 86 013.11 | 2 | 991 625.85 |                    | R63   | 84 884.29 | 2 | 991 045.99 |  |
| L64   | 85 886.83 | 2 | 991 519.95 |                    | R64   | 84 448.52 | 2 | 990 827.68 |  |
| L65   | 85 781.17 | 2 | 991 457.93 |                    | R65   | 83 966.15 | 2 | 990 586.03 |  |
| L66   | 85 576.57 | 2 | 991 329.92 |                    | R66   | 83 600.38 | 2 | 990 402.79 |  |
| L67   | 85 572.18 | 2 | 991 310.02 |                    | R67   | 82 123.83 | 2 | 989 663.66 |  |
| L68   | 85 585.88 | 2 | 991 267.41 |                    | R68   | 81 860.09 | 2 | 989 531.81 |  |
| L69   | 85 549.98 | 2 | 991 248.56 |                    | R69   | 80 843.28 | 2 | 989 023.48 |  |
| L70   | 85 508.72 | 2 | 991 278.35 |                    | R70   | 80 404.43 | 2 | 988 804.08 |  |
| L71   | 85 485.09 | 2 | 991 283.77 |                    | R71   | 79 602.17 | 2 | 988 402.65 |  |
| L72   | 85 436.67 | 2 | 991 276.15 |                    | R72   | 79 426.97 | 2 | 988 314.99 |  |
| L73   | 84 471.67 | 2 | 990 793.34 |                    | R73   | 79 246.77 | 2 | 988 224.82 |  |
| L74   | 84 000.89 | 2 | 990 557.81 |                    | R74   | 79 060.11 | 2 | 988 131.42 |  |
| L75   | 83 617.06 | 2 | 990 365.77 |                    | R75   | 78 789.24 | 2 | 987 995.88 |  |
| L76   | 82 162.29 | 2 | 989 638.44 |                    | R76   | 78 148.75 | 2 | 987 675.40 |  |
| L77   | 82 059.06 | 2 | 989 586.83 |                    | R77   | 77 726.97 | 2 | 987 464.63 |  |
| L78   | 81 848.93 | 2 | 989 481.77 |                    | R78   | 76 742.30 | 2 | 986 972.57 |  |
| L79   | 80 824.86 | 2 | 988 969.74 |                    | R79   | 76 449.61 | 2 | 986 826.17 |  |
| L80   | 80 422.82 | 2 | 988 768.73 |                    | R80   | 75 481.54 | 2 | 986 341.95 |  |
| L81   | 79 591.48 | 2 | 988 352.92 |                    | R81   | 75 379.73 | 2 | 986 291.02 |  |
| L82   | 79 421.72 | 2 | 988 268.02 |                    | R82   | 75 179.62 | 2 | 986 190.89 |  |
| L83   | 79 247.37 | 2 | 988 180.81 |                    | R83   | 73 694.54 | 2 | 985 447.80 |  |
| L84   | 79 068.41 | 2 | 988 091.31 |                    | R84   | 73 337.87 | 2 | 985 276.23 |  |
| L85   | 78 802.30 | 2 | 987 958.21 |                    | R85   | 72 850.02 | 2 | 985 045.04 |  |
| L86   | 78 160.44 | 2 | 987 637.18 |                    | R86   | 72 570.61 | 2 | 984 912.62 |  |
| L87   | 77 708.15 | 2 | 987 411.04 |                    | R87   | 72 525.45 | 2 | 984 908.54 |  |
| L88   | 76 409.54 | 2 | 986 761.30 |                    | R88   | 72 502.00 | 2 | 984 897.25 |  |
| L89   | 75 452.28 | 2 | 986 282.62 |                    | R89   | 72 477.31 | 2 | 984 868.41 |  |
| L90   | 75 397.30 | 2 | 986 255.13 |                    | R90   | 71 750.87 | 2 | 984 524.14 |  |
| L91   | 75 204.45 | 2 | 986 158.69 |                    | R91   | 71 444.94 | 2 | 984 379.13 |  |
| L92   | 73 711.53 | 2 | 985 412.10 |                    | R92   | 70 760.50 | 2 | 984 054.68 |  |
| L93   | 73 570.48 | 2 | 985 342.95 |                    | R93   | 70 699.48 | 2 | 984 042.14 |  |
| L94   | 73 144.45 | 2 | 985 140.91 |                    | R94   | 70 656.15 | 2 | 984 021.60 |  |
| L95   | 71 793.15 | 2 | 984 500.07 |                    | R95   | 70 660.00 | 2 | 984 007.04 |  |
| L96   | 71 448.93 | 2 | 984 336.90 |                    | R96   | 70 262.67 | 2 | 983 818.69 |  |
| L97   | 70 772.77 | 2 | 984 016.37 |                    | R97   | 69 497.25 | 2 | 983 455.92 |  |
| L98   | 70 769.48 | 2 | 984 000.29 |                    | R98   | 69 291.72 | 2 | 983 358.51 |  |
| L99   | 70 740.65 | 2 | 983 984.14 |                    | R99   | 68 546.27 | 2 | 983 005.20 |  |
| L100  | 70 712.84 | 2 | 983 987.96 |                    | R100  | 67 556.18 | 2 | 982 535.67 |  |
| L101  | 70 282.00 | 2 | 983 783.73 |                    | R101  | 66 710.01 | 2 | 982 134.39 |  |
| L102  | 69 493.19 | 2 | 983 410.01 |                    | R102  | 66 525.66 | 2 | 982 046.99 |  |
|   |           |   |            |                    | <div> <div>Vel Sheet</div> <div>15</div> <div>Van of</div> <div>17</div> <div>P1207/20</div> </div> |           |   |            |  |

| PADRESERWE KOÖRDINATE / ROAD RESERVE CO-ORDINATES |           |              |                            |              |                        |
|---|-----------|--------------|----------------------------|--------------|------------------------|
| LINKERKANT/LEFT HAND SIDE                         |           |              | REGTERKANT/RIGHT HAND SIDE |              |                        |
|   | Y         | X            | WG 27 <sup>a</sup>         | Y            | X                      |
| L103  | 69 309.92 | 2 983 323.19 |                            | R103         | 66 125.73 2 981 857.38 |
| L104  | 68 552.07 | 2 982 964.14 |                            | R104         | 65 655.44 2 981 634.41 |
| L105  | 67 529.46 | 2 982 479.18 |                            | R105         | 65 190.44 2 981 413.95 |
| L106  | 66 732.03 | 2 982 101.01 |                            | R106         | 64 927.56 2 981 289.31 |
| L107  | 66 562.87 | 2 982 020.79 |                            | R107         | 64 255.64 2 980 970.92 |
| L108  | 66 114.99 | 2 981 808.42 |                            | R108         | 62 900.86 2 980 328.95 |
| L109  | 65 648.23 | 2 981 587.09 |                            | R109         | 61 195.33 2 979 519.46 |
| L110  | 65 190.81 | 2 981 370.19 |                            | R110         | 61 092.15 2 979 470.54 |
| L111  | 64 947.70 | 2 981 254.91 |                            | R111         | 61 037.18 2 979 461.86 |
| L112  | 64 276.61 | 2 980 936.66 |                            | R112         | 61 014.29 2 979 450.57 |
| L113  | 62 922.33 | 2 980 294.41 |                            | R113         | 60 981.79 2 979 418.22 |
| L114  | 61 205.40 | 2 979 480.35 |                            | R114         | 60 647.44 2 979 259.69 |
| L115  | 61 129.69 | 2 979 444.50 |                            | R115         | 60 529.45 2 979 198.86 |
| L116  | 61 089.84 | 2 979 409.44 |                            | R116         | 60 497.48 2 979 179.43 |
| L117  | 61 064.45 | 2 979 397.65 |                            | R117         | 60 409.98 2 979 126.25 |
| L118  | 61 007.52 | 2 979 386.64 |                            | R118         | 59 754.83 2 978 694.37 |
| L119  | 60 895.29 | 2 979 333.49 |                            | R119         | 59 356.80 2 978 431.99 |
| L120  | 60 671.76 | 2 979 227.63 |                            | R120         | 59 347.61 2 978 443.89 |
| L121  | 60 538.95 | 2 979 152.99 |                            | R121         | 59 326.58 2 978 430.03 |
| L122  | 60 431.97 | 2 979 092.86 |                            | R122         | 59 335.69 2 978 418.07 |
| L123  | 59 757.33 | 2 978 650.25 |                            | R123         | 59 249.12 2 978 361.00 |
| L124  | 59 225.81 | 2 978 301.52 |                            | R124         | 59 097.93 2 978 261.34 |
| L125  | 59 234.03 | 2 978 288.97 |                            | R125         | 58 880.34 2 978 122.67 |
| L126  | 59 203.78 | 2 978 269.12 |                            | R126         | 58 832.01 2 978 093.65 |
| L127  | 59 195.56 | 2 978 281.67 |                            | R127         | 57 676.25 2 977 475.58 |
| L128  | 59 079.90 | 2 978 205.79 |                            | R128         | 57 194.30 2 977 221.40 |
| L129  | 58 888.89 | 2 978 082.18 |                            | R129         | 57 037.87 2 977 152.07 |
| L130  | 58 809.83 | 2 978 038.42 |                            | R130         | 56 780.10 2 977 059.08 |
| L131  | 57 695.70 | 2 977 443.58 |                            | R131         | 56 598.54 2 977 010.33 |
| L132  | 57 315.95 | 2 977 240.83 |                            | R132         | 56 421.46 2 976 972.62 |
| L133  | 57 247.34 | 2 977 205.21 |                            | R133         | 56 264.62 2 976 949.39 |
| L134  | 57 054.75 | 2 977 117.76 |                            | R134         | 55 539.21 2 976 864.54 |
| L135  | 56 758.61 | 2 977 013.20 |                            | R135         | 54 098.45 2 976 695.81 |
| L136  | 56 744.39 | 2 977 009.17 |                            | R136         | 53 479.59 2 976 623.64 |
| L137  | 56 612.81 | 2 976 972.09 |                            | R137         | 52 476.82 2 976 560.66 |
| L138  | 56 349.11 | 2 976 922.59 |                            | R138         | 52 372.27 2 976 554.47 |
| L139  | 56 012.95 | 2 976 881.65 |                            | R139         | 51 388.50 2 976 495.95 |
| L140  | 55 554.76 | 2 976 828.06 |                            | R140         | 51 288.25 2 976 486.19 |
| L141  | 54 123.23 | 2 976 660.64 |                            | R141         | 51 132.97 2 976 467.06 |
| L142  | 53 479.37 | 2 976 587.03 |                            | R142         | 51 086.58 2 976 454.90 |
| L143  | 53 363.19 | 2 976 575.70 |                            | R143         | 51 045.13 2 976 447.32 |
| L144  | 52 382.33 | 2 976 515.08 |                            | R144         | 50 853.72 2 976 399.60 |
| L145  | 51 474.76 | 2 976 463.65 |                            | R145         | 49 214.41 2 975 890.08 |
| L146  | 51 303.36 | 2 976 449.67 |                            | R146         | 48 754.28 2 975 747.07 |
| L147  | 51 147.51 | 2 976 427.37 |                            | R147         | 48 354.64 2 975 626.24 |
| L148  | 51 075.31 | 2 976 413.52 |                            | R148         | 48 346.81 2 975 624.36 |
| L149  | 51 022.66 | 2 976 403.39 |                            | R149         | 47 247.88 2 975 361.07 |
| L150  | 50 768.71 | 2 976 334.34 |                            | R150         | 46 857.80 2 975 267.61 |
| L151  | 49 215.72 | 2 975 851.21 |                            | R151         | 46 380.76 2 975 201.98 |
| L152  | 48 762.73 | 2 975 710.28 |                            | R152         | 46 381.54 2 975 174.15 |
| L153  | 48 456.05 | 2 975 615.39 |                            | R153         | 45 991.49 2 975 101.97 |
|   |           |              | Vel Sheet                  | 16 Van of 17 | P1207/20               |



| PADRESERVE KOÖRDINATE / ROAD RESERVE CO-ORDINATES |           |    |            |        |                            |           |   |            |  |
|---|-----------|----|------------|--------|----------------------------|-----------|---|------------|--|
| LINKERKANT/LEFT HAND SIDE                         |           |    |            |        | REGTERKANT/RIGHT HAND SIDE |           |   |            |  |
|   | Y         |    | X          | WG 27° |                            | Y         |   | X          |  |
| L154  | 48 337.54 | 2  | 975 582.96 |        | R154                       | 45 567.89 | 2 | 975 023.58 |  |
| L155  | 47 749.44 | 2  | 975 441.16 |        | R155                       | 45 091.94 | 2 | 974 935.50 |  |
| L156  | 47 248.94 | 2  | 975 321.43 |        | R156                       | 44 597.42 | 2 | 974 843.99 |  |
| L157  | 46 970.35 | 2  | 975 253.32 |        | R157                       | 44 391.44 | 2 | 974 805.88 |  |
| L158  | 46 909.90 | 2  | 975 239.61 |        | R158                       | 44 122.48 | 2 | 974 754.28 |  |
| L159  | 46 489.70 | 2  | 975 155.76 |        | R159                       | 43 657.29 | 2 | 974 652.73 |  |
| L160  | 46 382.63 | 2  | 975 135.48 |        | R160                       | 43 240.08 | 2 | 974 561.13 |  |
| L161  | 46 383.06 | 2  | 975 120.31 |        | R161                       | 43 237.51 | 2 | 974 573.05 |  |
| L162  | 46 358.29 | 2  | 975 115.73 |        | R162                       | 43 175.61 | 2 | 974 574.85 |  |
| L163  | 46 357.73 | 2  | 975 130.88 |        | R163                       | 43 157.75 | 2 | 974 586.28 |  |
| L164  | 45 993.06 | 2  | 975 063.45 |        | R164                       | 43 133.33 | 2 | 974 580.93 |  |
| L165  | 45 606.10 | 2  | 974 991.91 |        | R165                       | 43 121.89 | 2 | 974 563.06 |  |
| L166  | 45 348.61 | 2  | 974 944.30 |        | R166                       | 43 066.44 | 2 | 974 535.52 |  |
| L167  | 45 094.00 | 2  | 974 897.23 |        | R167                       | 43 068.40 | 2 | 974 523.45 |  |
| L168  | 44 591.14 | 2  | 974 804.25 |        | R168                       | 41 554.28 | 2 | 974 191.19 |  |
| L169  | 44 412.97 | 2  | 974 771.13 |        | R169                       | 41 551.55 | 2 | 974 203.15 |  |
| L170  | 44 290.75 | 2  | 974 748.42 |        | R170                       | 41 504.31 | 2 | 974 208.17 |  |
| L171  | 43 248.93 | 2  | 974 521.54 |        | R171                       | 41 486.45 | 2 | 974 219.60 |  |
| L172  | 43 250.92 | 2  | 974 512.47 |        | R172                       | 41 482.29 | 2 | 974 226.59 |  |
| L173  | 43 195.52 | 2  | 974 484.96 |        | R173                       | 41 423.64 | 2 | 974 213.63 |  |
| L174  | 43 184.09 | 2  | 974 467.09 |        | R174                       | 41 422.95 | 2 | 974 205.66 |  |
| L175  | 43 159.67 | 2  | 974 461.73 |        | R175                       | 41 411.51 | 2 | 974 187.80 |  |
| L176  | 43 141.80 | 2  | 974 473.17 |        | R176                       | 41 370.89 | 2 | 974 163.52 |  |
| L177  | 43 079.98 | 2  | 974 474.96 |        | R177                       | 41 373.61 | 2 | 974 151.55 |  |
| L178  | 43 077.93 | 2  | 974 484.32 |        | R178                       | 40 799.57 | 2 | 974 025.65 |  |
| L179  | 41 562.56 | 2  | 974 154.45 |        | R179                       | 40 797.27 | 2 | 974 037.63 |  |
| L180  | 41 565.15 | 2  | 974 142.61 |        | R180                       | 40 734.36 | 2 | 974 039.21 |  |
| L181  | 41 509.75 | 2  | 974 115.10 |        | R181                       | 40 716.49 | 2 | 974 050.65 |  |
| L182  | 41 498.32 | 2  | 974 097.24 |        | R182                       | 40 692.07 | 2 | 974 045.29 |  |
| L183  | 41 463.99 | 2  | 974 089.74 |        | R183                       | 40 680.64 | 2 | 974 027.43 |  |
| L184  | 41 446.13 | 2  | 974 101.17 |        | R184                       | 40 623.17 | 2 | 973 999.44 |  |
| L185  | 41 384.30 | 2  | 974 102.96 |        | R185                       | 40 567.29 | 2 | 973 989.30 |  |
| L186  | 41 381.86 | 2  | 974 114.79 |        | R186                       | 40 536.77 | 2 | 973 984.02 |  |
| L187  | 40 817.97 | 2  | 973 991.07 |        | R187                       | 40 535.07 | 2 | 973 992.67 |  |
| L188  | 40 820.42 | 2  | 973 979.24 |        | R188                       | 40 524.90 | 2 | 973 990.10 |  |
| L189  | 40 767.35 | 2  | 973 952.89 |        | R189                       | 40 514.80 | 2 | 973 986.88 |  |
| L190  | 40 753.59 | 2  | 973 933.87 |        | R190                       | 40 516.46 | 2 | 973 980.03 |  |
| L191  | 40 712.51 | 2  | 973 924.90 |        | R191                       | 40 464.54 | 2 | 973 967.13 |  |
| L192  | 40 709.30 | 2  | 973 939.52 |        | R192                       | 40 467.81 | 2 | 973 952.89 |  |
| L193  | 40 647.53 | 2  | 973 941.31 |        | R193                       | 40 349.10 | 2 | 973 926.86 |  |
| L194  | 40 549.04 | 2  | 973 915.99 |        | R194                       | 39 611.74 | 2 | 973 748.05 |  |
| L195  | 40 550.42 | 2  | 973 908.39 |        | R195                       | 39 589.19 | 2 | 973 750.67 |  |
| L196  | 40 512.15 | 2  | 973 899.10 |        | R196                       | 39 566.64 | 2 | 973 753.29 |  |
| L197  | 40 507.97 | 2  | 973 920.21 |        | R197                       | 38 916.46 | 2 | 973 595.55 |  |
| L198  | 40 454.31 | 2  | 973 907.33 |        | R198                       | 38 759.79 | 2 | 973 557.54 |  |
| L199  | 39 972.50 | 2  | 973 791.65 |        | LINKERKANT/LEFT HAND SIDE  |           |   |            |  |
| L200  | 39 967.72 | 2  | 973 784.05 |        | L205                       | 39 636.85 | 2 | 973 702.68 |  |
| L201  | 39 949.44 | 2  | 973 779.61 |        | L206                       | 38 965.25 | 2 | 973 539.73 |  |
| L202  | 39 941.90 | 2  | 973 784.23 |        | L207                       | 38 773.85 | 2 | 973 493.42 |  |
| L203  | 39 657.35 | 2  | 973 715.11 |        |                            |           |   |            |  |
| L204  | 39 629.15 | 2  | 973 708.23 |        |                            |           |   |            |  |
| Vel Sheet   |           | 17 | Van of     |        | 17                         | P1207/20  |   |            |  |