

---

**GOVERNMENT NOTICES • GOEWERMENTSKENNISGEWINGS**

---

**DEPARTMENT OF TRANSPORT**

NO. 4172

11 December 2023


**THE SOUTH AFRICAN NATIONAL ROADS  
AGENCY SOC LIMITED**Registration No: 1998/009584/30

---

**DECLARATION AMENDMENT OF NATIONAL ROAD N2 SECTION 20**

AMENDMENT OF DECLARATION No. 1510 OF 2016.

By virtue of section 40(1)(b) of the South African National Roads Agency Limited and the National Roads Act 1998 (Act No. 7 of 1998), I hereby amend Declaration No. 1510 of 2016 by substituting the section from its start up to Points L623 and R584 on Sheet 16 of Plan No. P902/16, with the accompanying sheets 1 to 31 of Plan No. P1231/22

**(National Road N2 Section 20: Mzimvubu River – Mtentu River)****MINISTER OF TRANSPORT**

DEPARTEMENT VAN VERVOER

NO. 4172

11 Desember 2023

**DIE SUID-AFRIKAANSE NASIONALE  
PADAGENTSKAP MSB BEPERK**

Registrasie No: 1998/009584/30

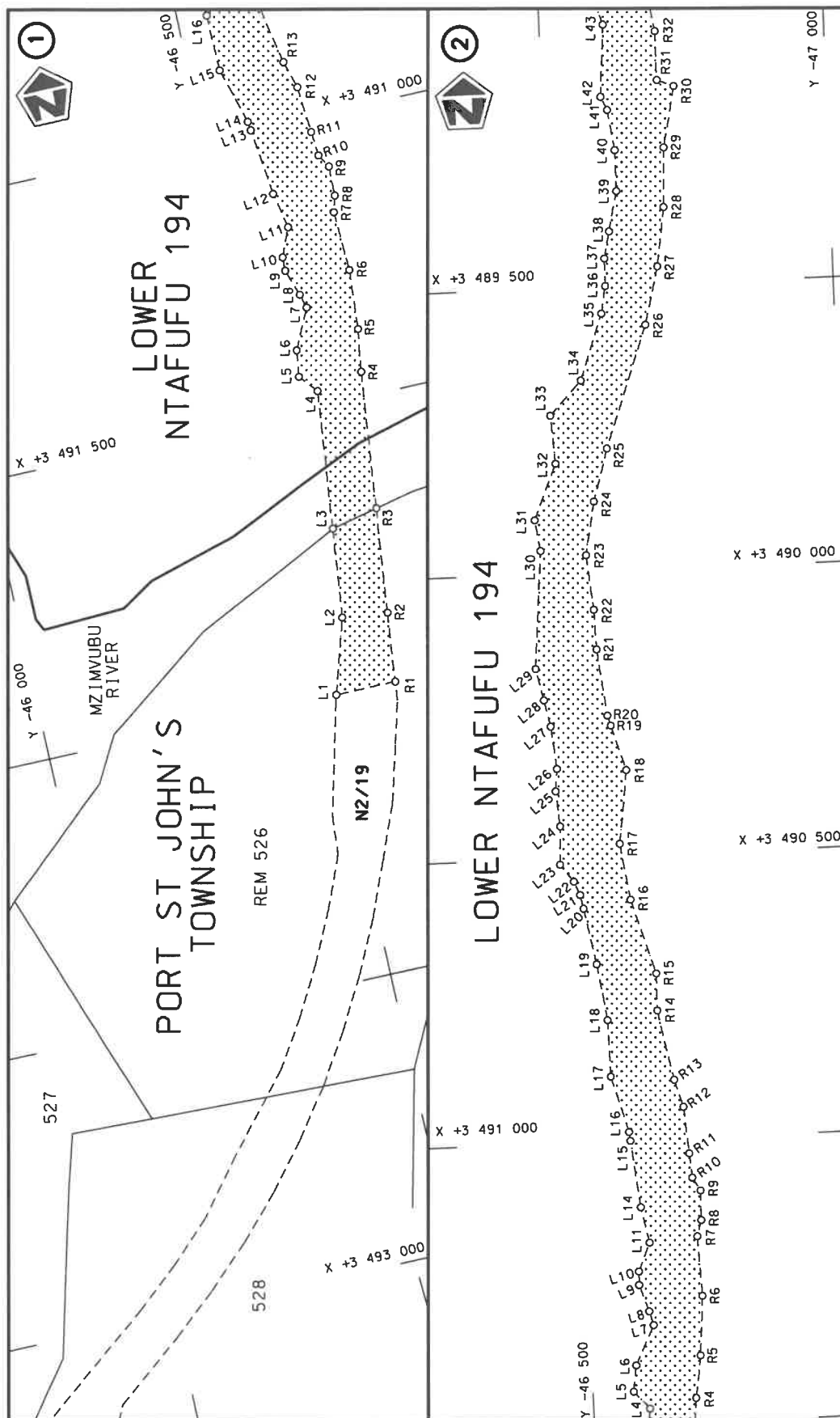
**VERKLARING WYSIGING VAN NASIONALE PAD N2 SEKSIE 20**


WYSIGING VAN VERKLARING No. 1510 VAN 2016.

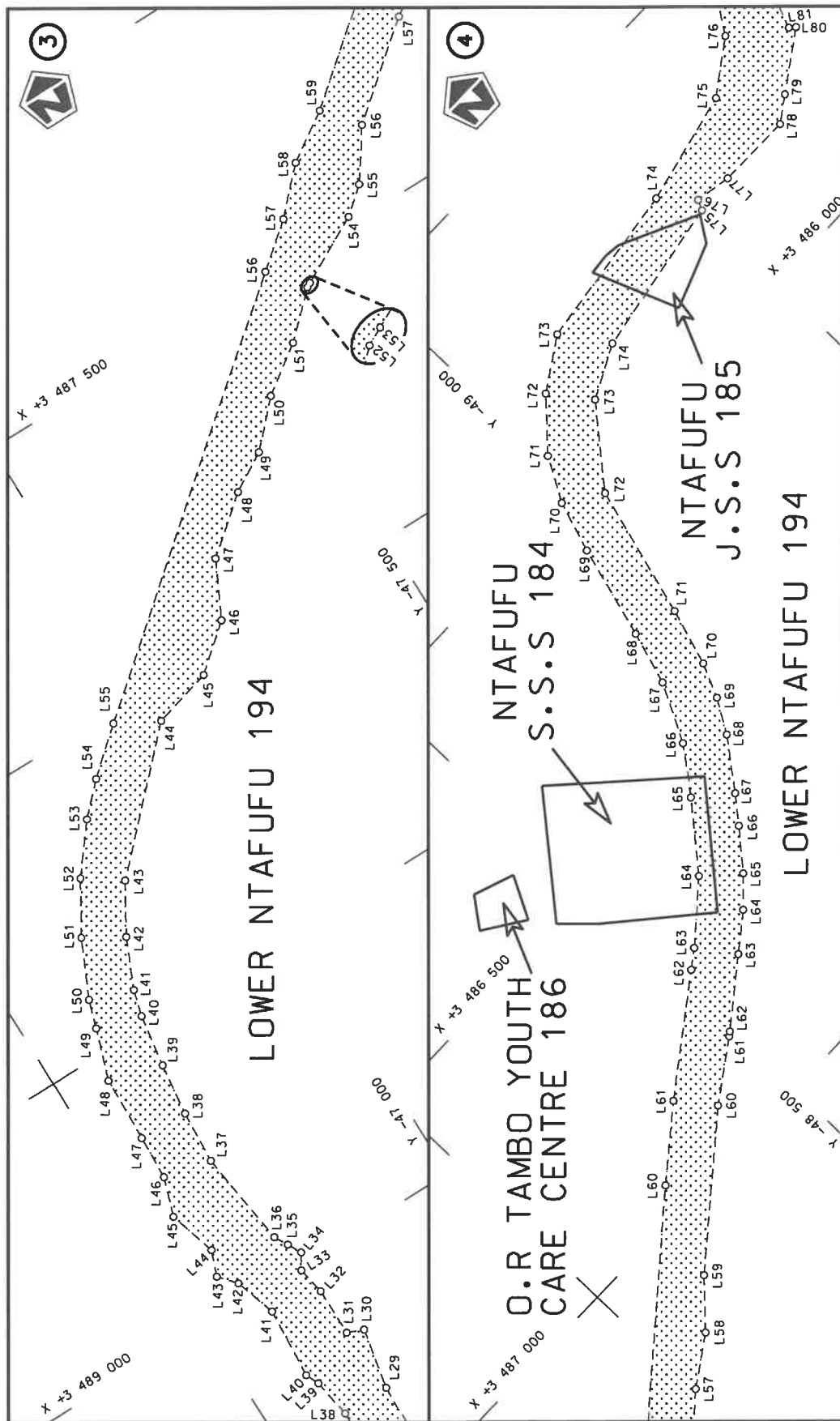
Kragtens Artikel 40(1)(b) van die Suid-Afrikaanse Nasionale Padagentskap Beperk en Nasionale Paaie Wet 1998 (Wet No. 7 van 1998), wysig ek hiermee Verklaring No. 1510 van 2016 deur die gedeelte vanaf die begin tot en met punte L623 en R584 op Vel 16 van Plan No. P902/16 te vervang met bygaande velle 1 tot 31 van Plan No. P1231/22.


**(Nasionale Pad N2 Seksie 20: Mzimvubu Rivier – Mtentu Rivier)**

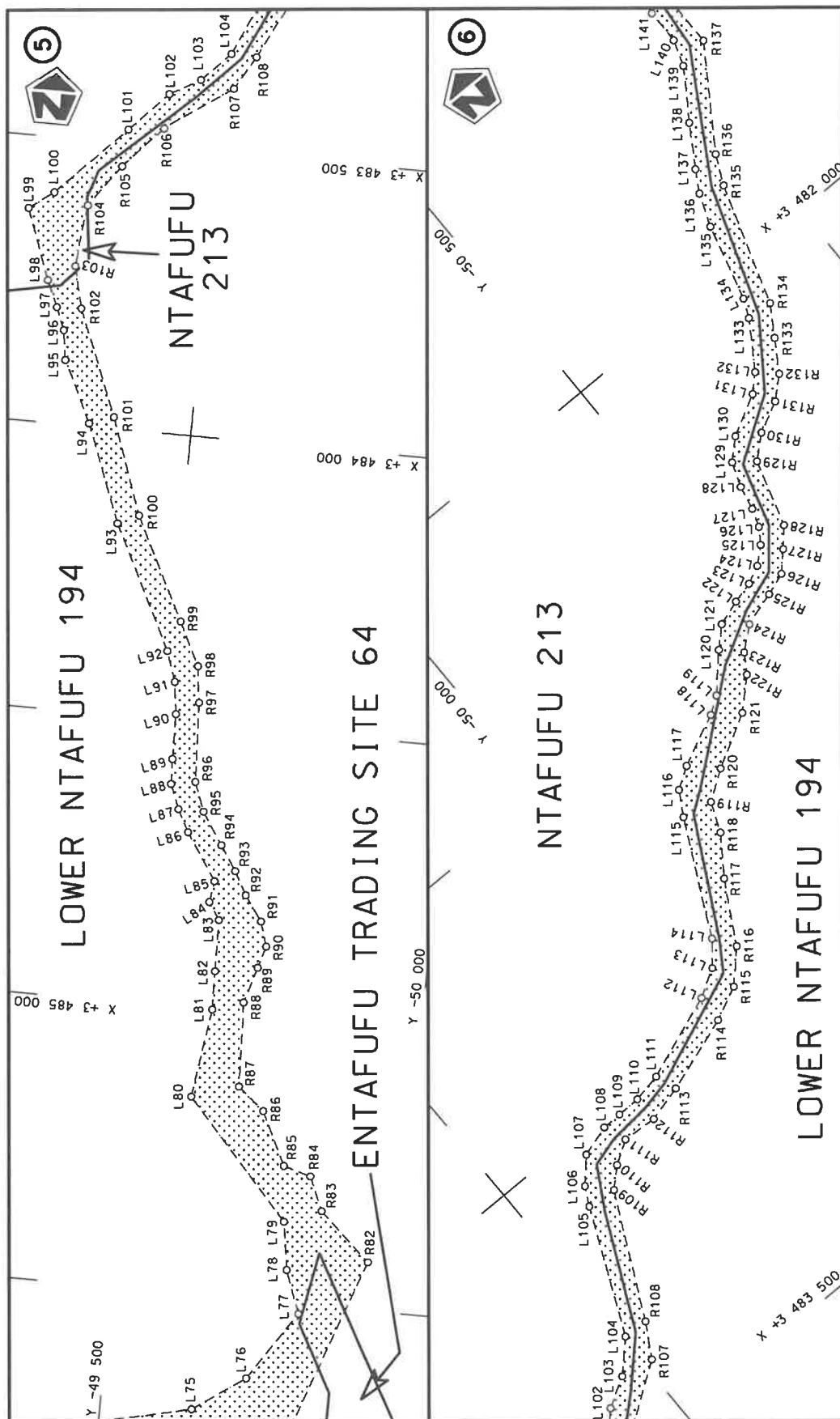
  
**MINISTER VAN VERVOER**



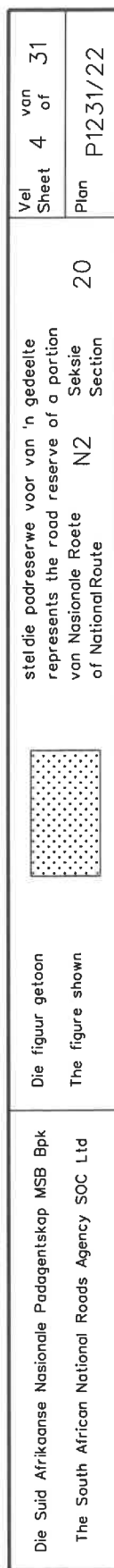
Die Suid Afrikaanse Nasionale Padagentskap MSB Bpk The South African National Roads Agency SOC Ltd	Die figuur getoon The figure shown		steldie padreserwe voor van 'n gedeelte represents the road reserve of a portion van Nasionale Roete N2 of National Route	Vel Sheet 1 of 31
				Plan P1231/22

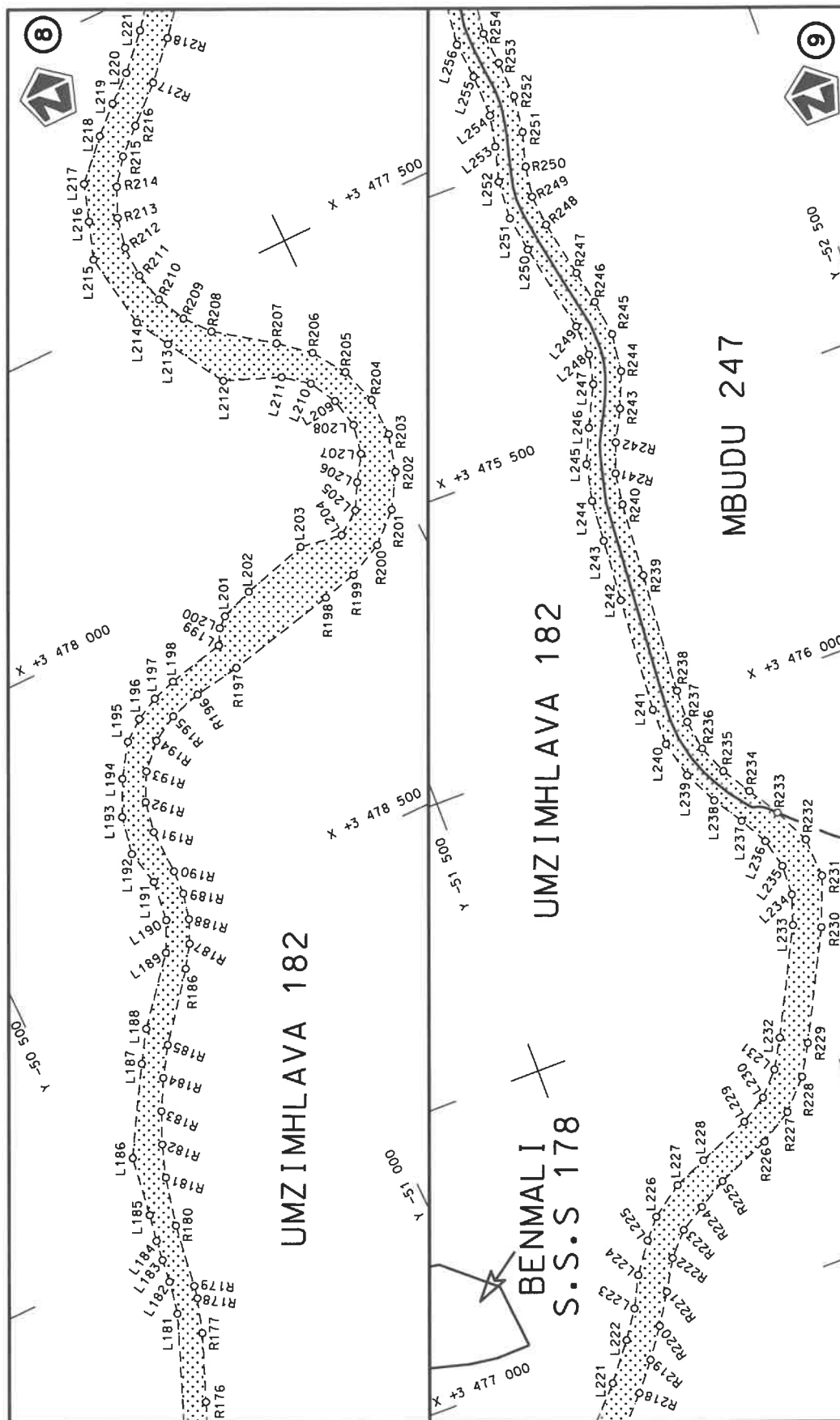



Die Suid Afrikaanse Nasionale Padagentskap MSB Bpk The South African National Roads Agency SOC Ltd	Die figuur getoon The figure shown	 steldie padreserwe voor van 'n gedeelte represents the road reserve of a portion van Nasionale Roete N2 of National Route	Vel Sheet 2 of 31 Plan P1231/22
---	---------------------------------------	---	---------------------------------------



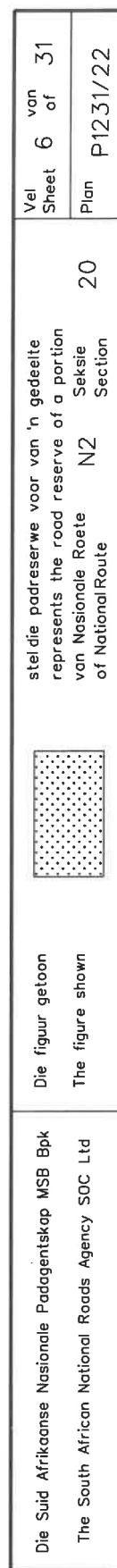
Die Suid Afrikaanse Nasionale Padagentskap MSB Bpk The South African National Roads Agency SOC Ltd	Die figuur getoon The figure shown	steldie padreserwe voor van 'n gedeelte represents the road reserve of a portion van Nasionale Roete N2 of National Route Section	Vel Sheet 3 of 31 Plan P1231/22
---	---------------------------------------	--	---------------------------------------



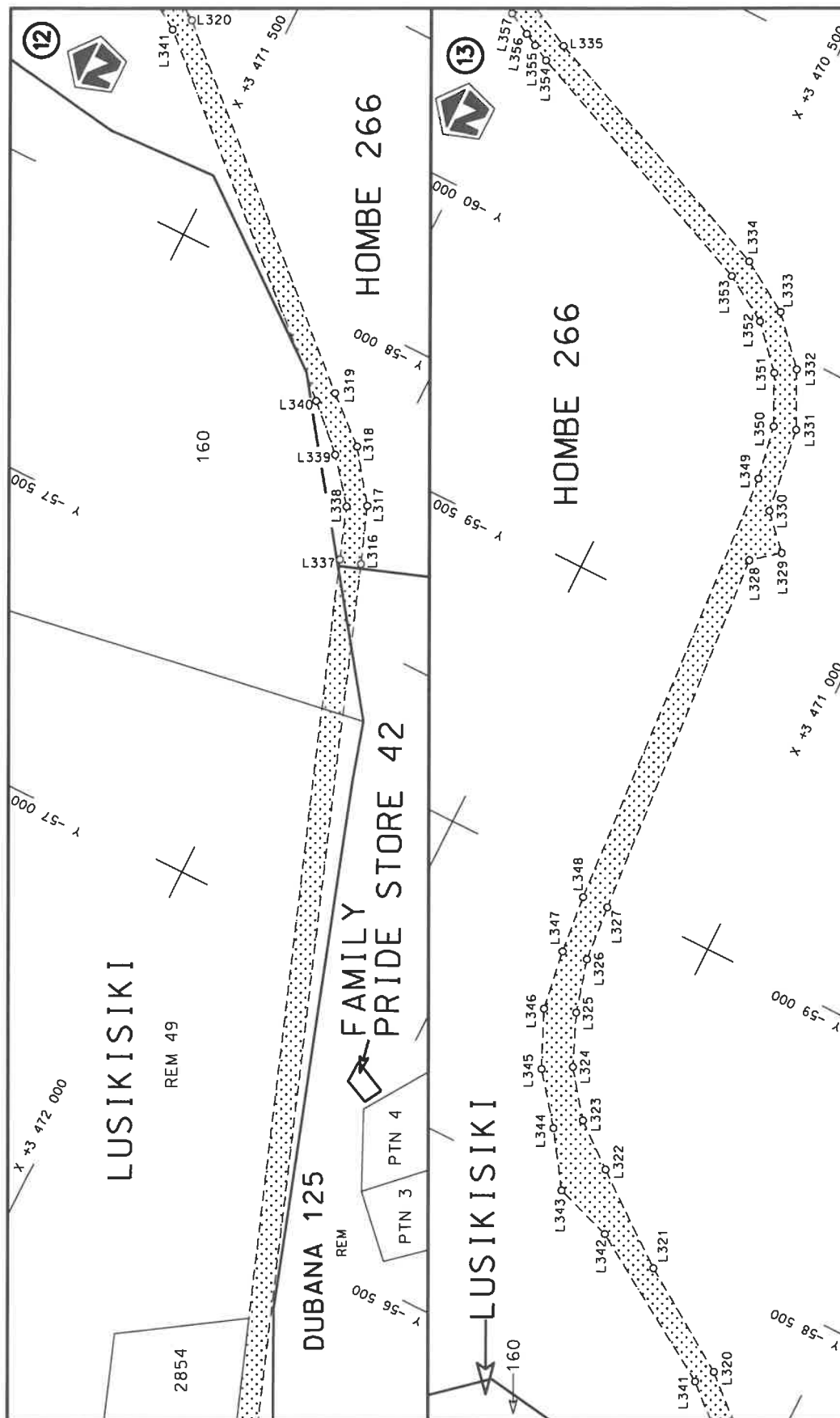


Die Suid Afrikaanse Nasionale Padagentskap MSB Bpk The South African National Roads Agency SOC Ltd	Die figuur getoon The figure shown		stel die padreserwe voor van 'n gedeelte represents the road reserve of a portion van Nasionale Roete N2 of National Route Section
Vel Sheet 5 of 31 Plan P1231/22	20	20	20

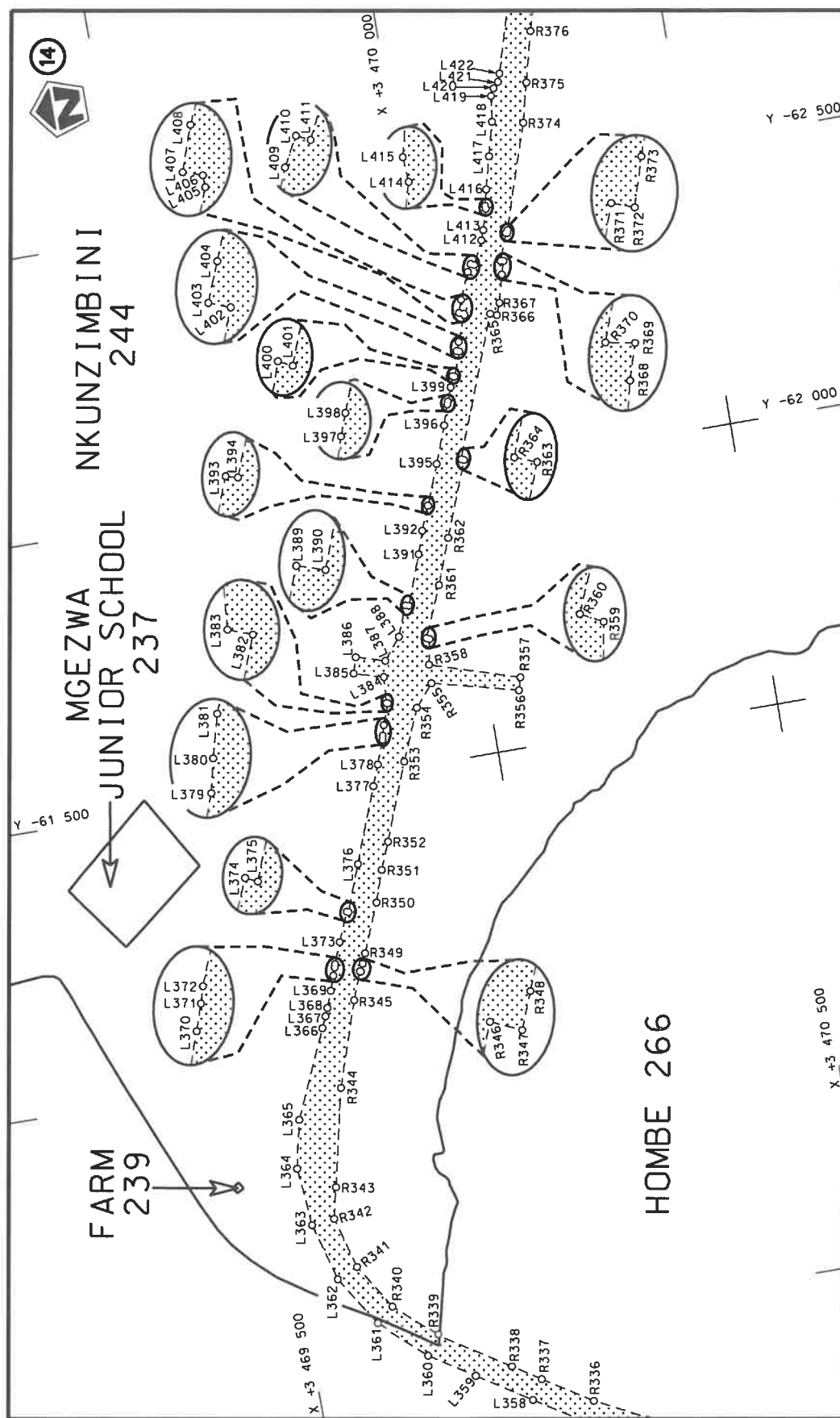








Vel Sheet 7 of 31 Plan P1231/22	steldie padreserwe voor van 'n gedeelte represents the road reserve of a portion van Nasionale Roete N2 of National Route Section 20	Die figuur getoon The figure shown  Die Suid Afrikaanse Nasionale Padagentskap MSB Bpk The South African National Roads Agency SOC Ltd
---------------------------------------	---	--



Vel  
Sheet 8 of 31

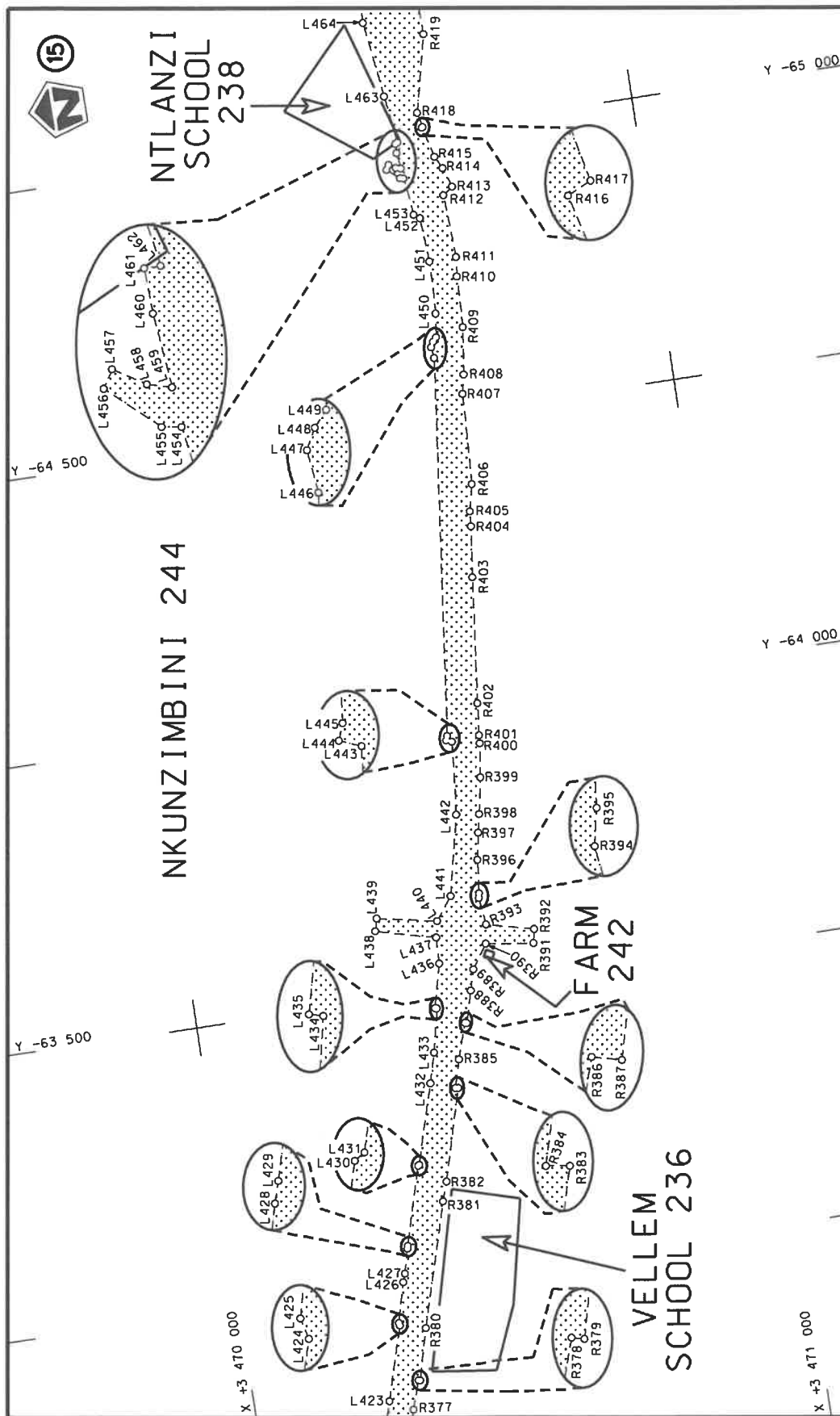
Plan  
P1231/22

steeldie padreserwe voor van 'n gedeelte  
represents the road reserve of a portion  
van Nasionale Roete N2  
of National Route

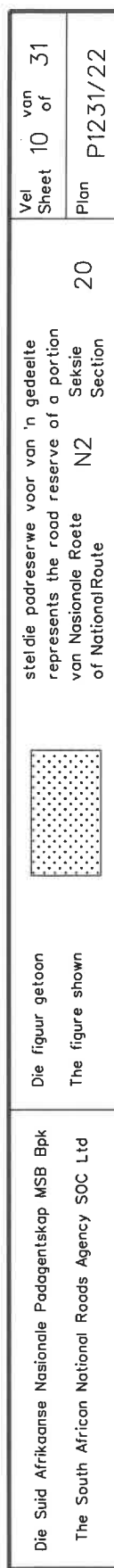


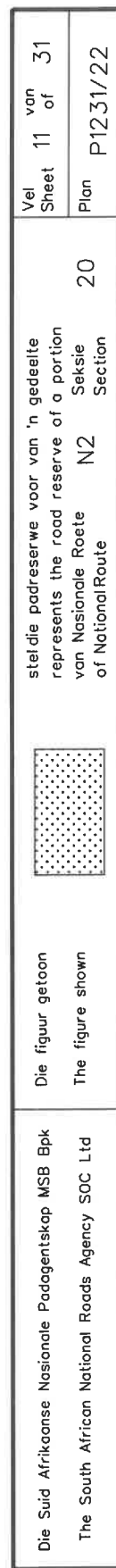
Die figuur getoon  
The figure shown

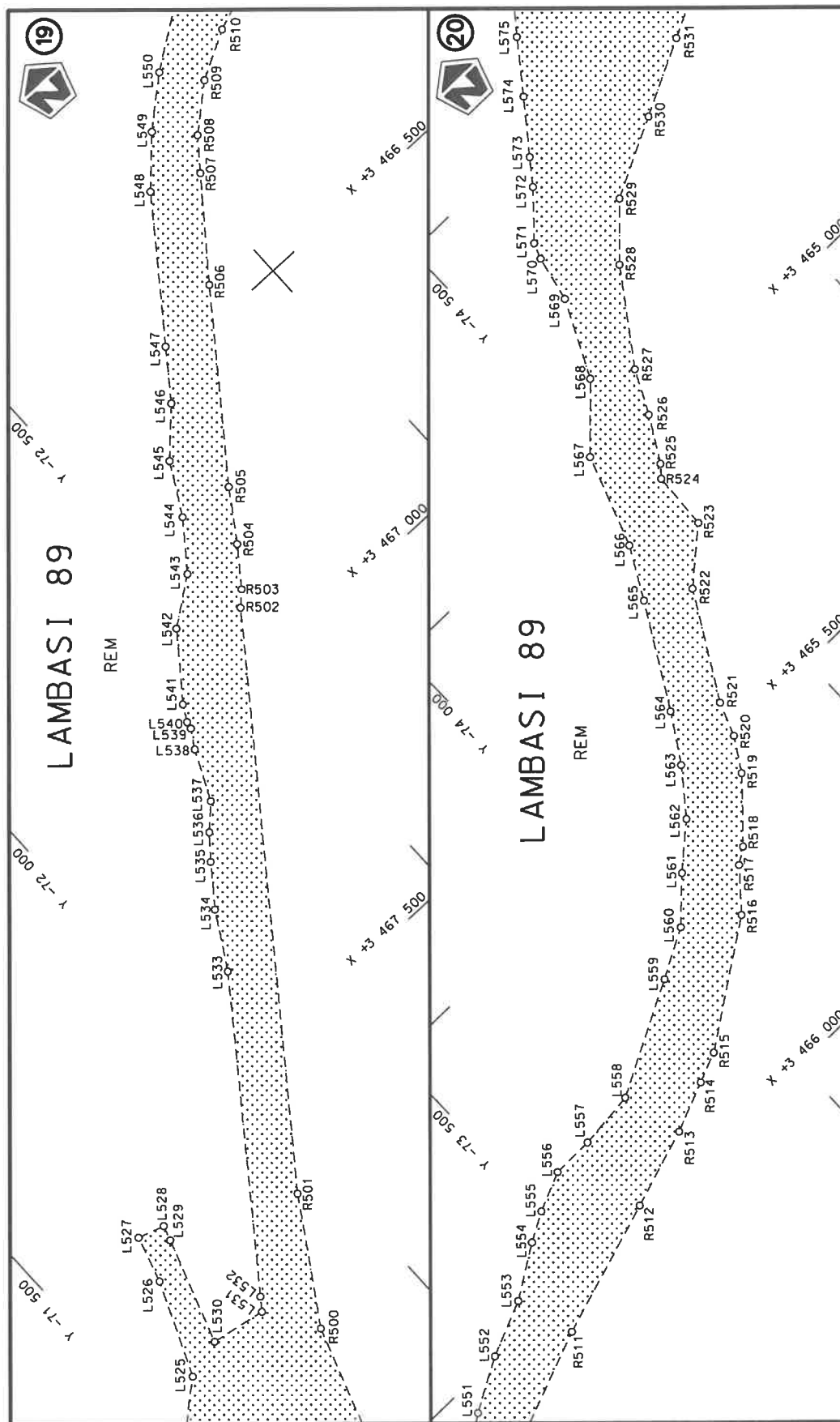
Die Suid Afrikaanse Nasionale Padagentskap MSB Bpk  
The South African National Roads Agency SOC Ltd




Vel Sheet 9 of 31 Plan P1231/22	steldie podreserwe voor van 'n gedeelte represents the road reserve of a portion van Nasionale Roete N2 Sekse of National Route Section	Die Suid Afrikaanse Nasionale Padagentskap MSB Bpk The South African National Roads Agency SOC Ltd
------------------------------------	--	---

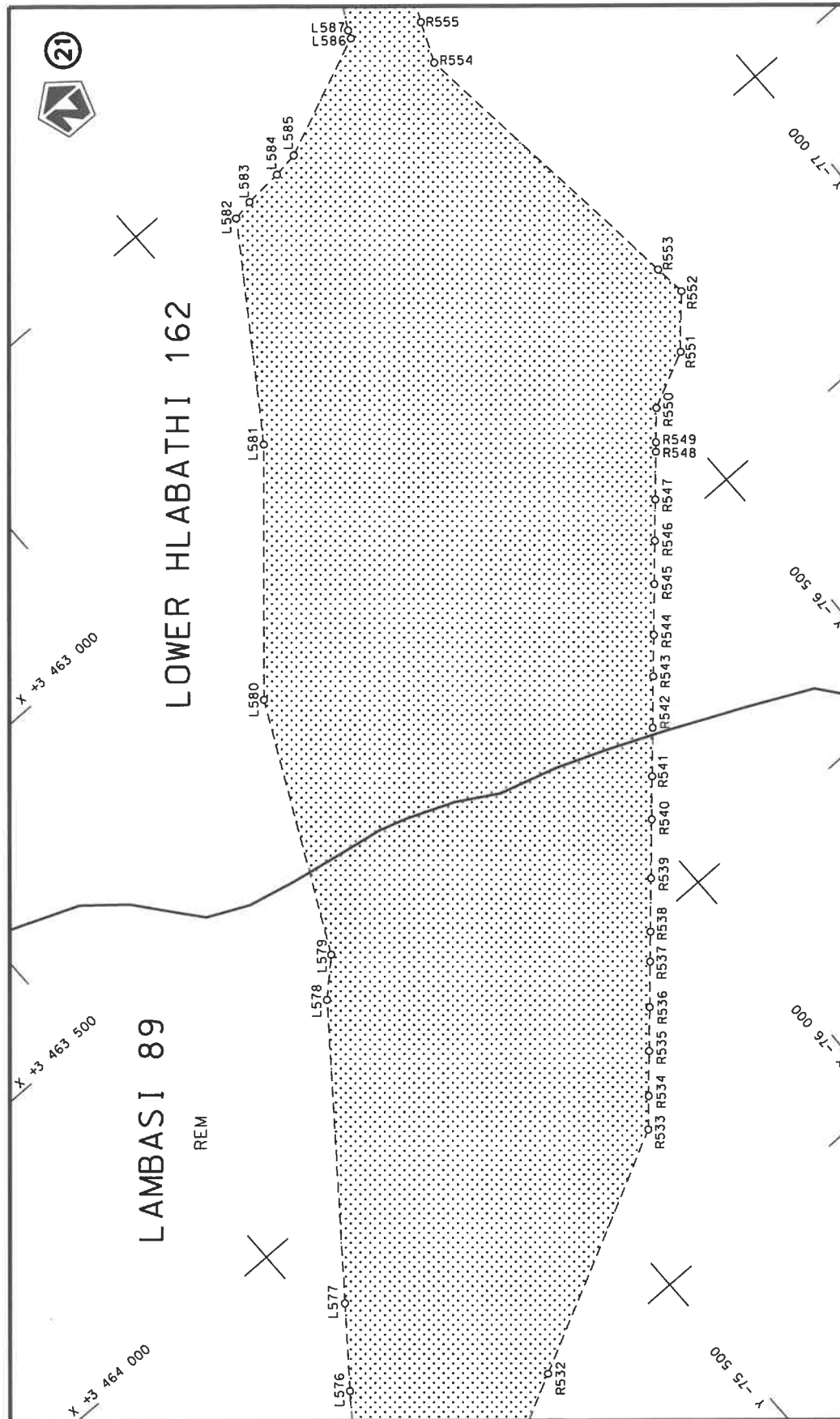


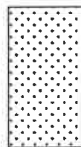




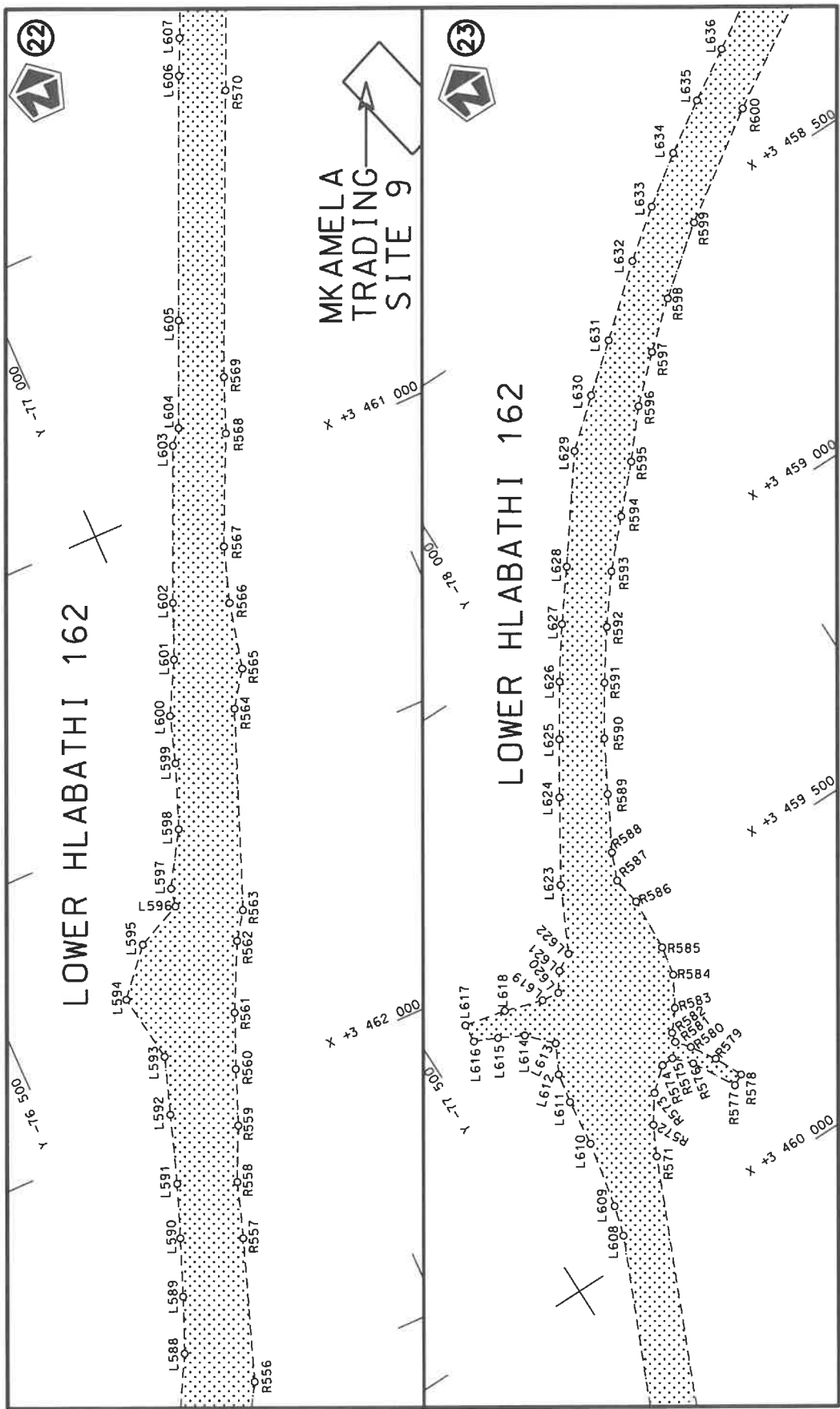
Die Suid Afrikaanse Nasionale Padagentskap MSB Bpk The South African National Roads Agency SOC Ltd	Die figuur getoon The figure shown	 stel die padreserwe voor van 'n gedeelte represents the road reserve of a portion van Nasionale Roete N2 of National Route	Vel Sheet 12 of 31
		20 Seksie Section	Plan P1231/22




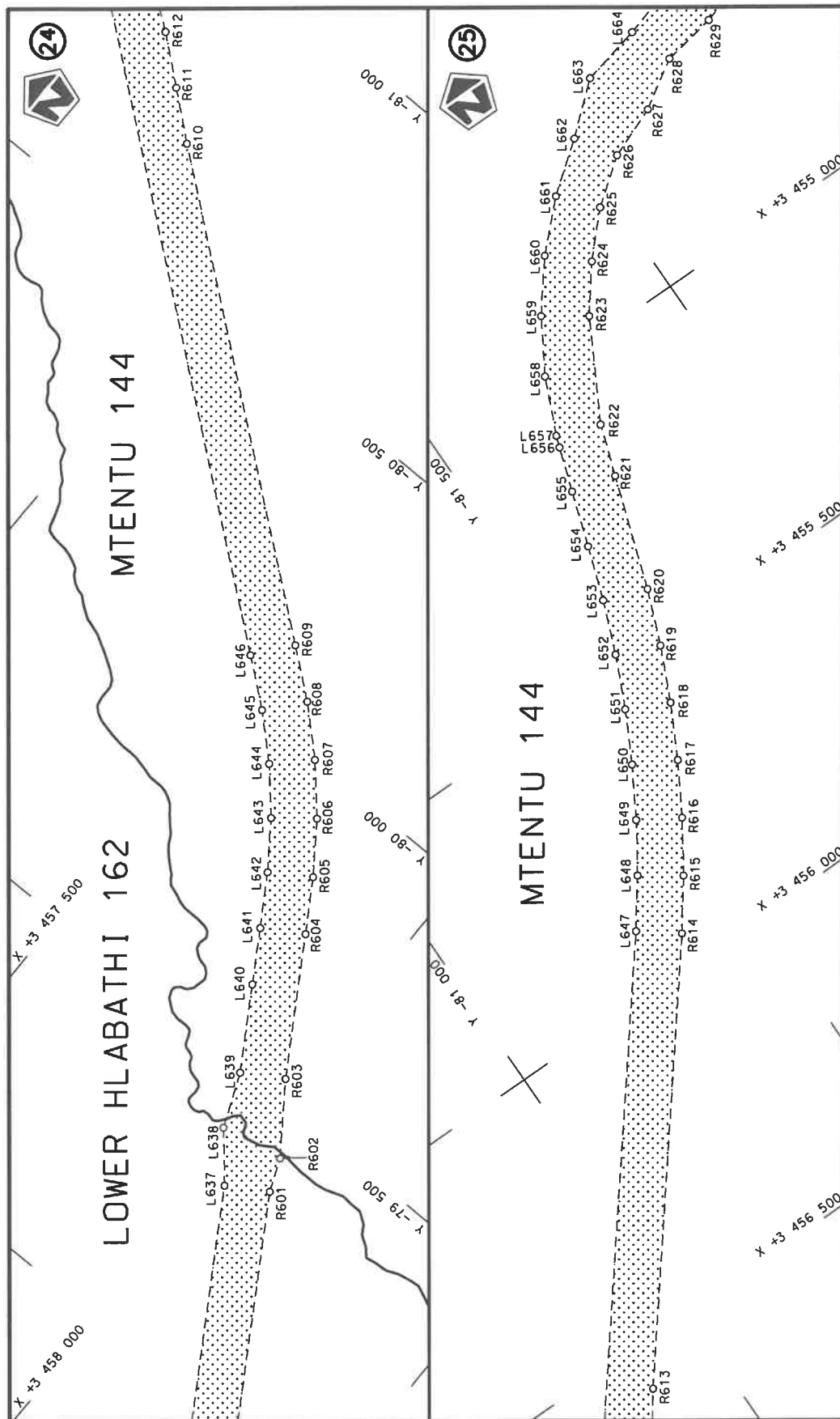


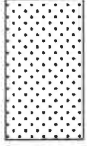
Die Suid Afrikaanse Nasionale Padagentskap MSB Bpk The South African National Roads Agency SOC Ltd	Die figuur getoon The figure shown	 stel die padreserwe voor van 'n gedeelte represents the road reserve of a portion van Nasionale Roete of National Route	Vel Sheet 13 of 31  Plan P1231/22
---	---------------------------------------	---	--

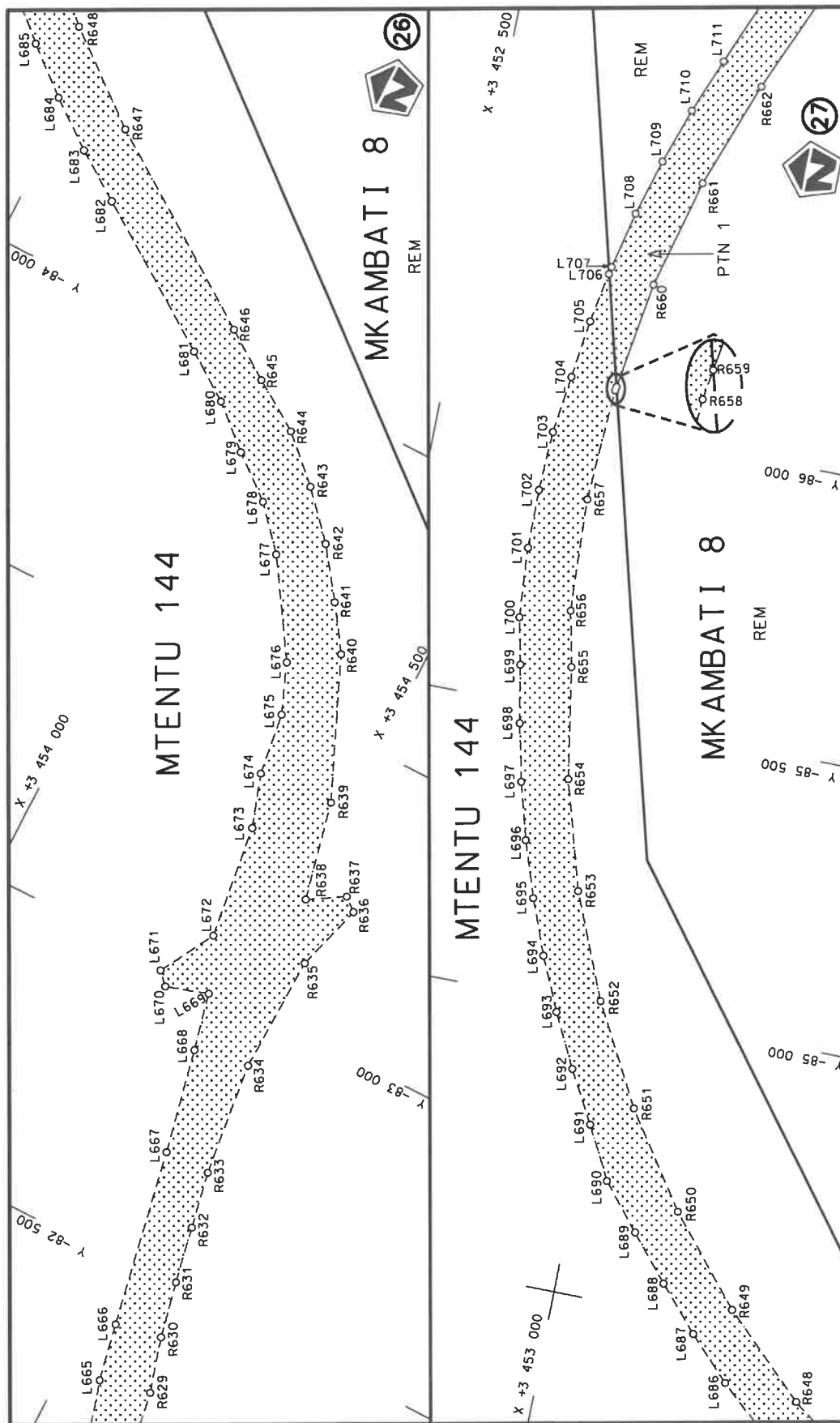




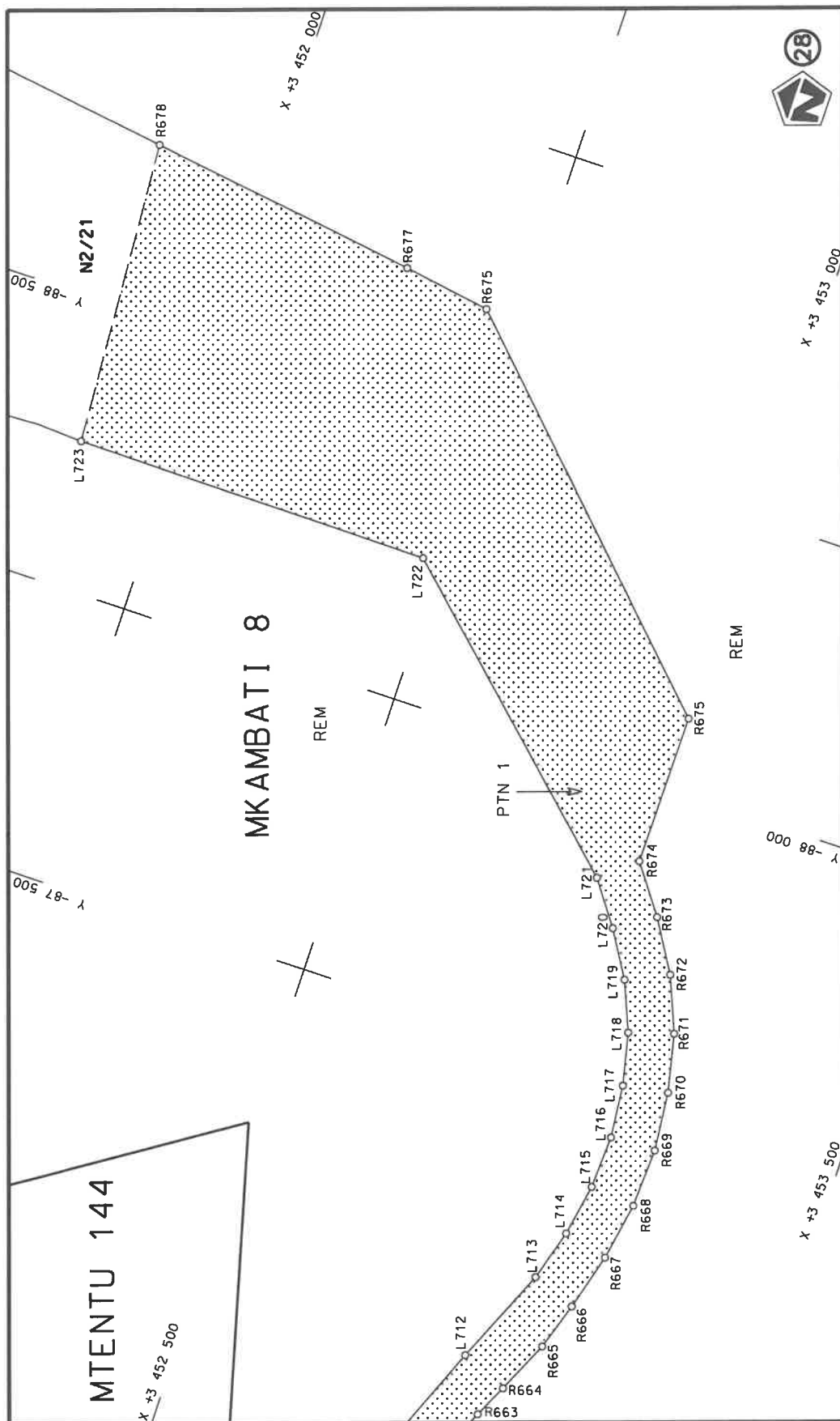
Die Suid Afrikaanse Nasionale Padagentskap MSE Bpk The South African National Roads Agency SOC Ltd	Die figuur getoon The figure shown		stel die padreserwe voor van 'n gedeelte represents the road reserve of a portion van Nasionale Roete N2 of National Route	Seksie Section 20	Plan P1231/22
			Vel Sheet 14 of 31		



Die Suid Afrikaanse Nasionale Padagentskap MSB Bpk The South African National Roads Agency SOC Ltd	Die figuur getoon The figure shown		stel die padreserwe voor van 'n gedeelte represents the road reserve of a portion van Nasionale Roete N2 of National Route Section	Vel Sheet 15 of 31 Plan P1231/22
---	---------------------------------------	---	---	--



Die Suid Afrikaanse Nasionale Padagentskap MSB Bpk The South African National Roads Agency SOC Ltd	Die figuur getoon The figure shown	stel die padreserwe voor van 'n gedeelte represents the road reserve of a portion van Nasionale Roete N2 of National Route	Vel Sheet 16 of 31 Plan P1231/22
---	---------------------------------------	---	--



Die Suid Afrikaanse Nasionale Padagentskap MSB Bpk The South African National Roads Agency SOC Ltd	Die figuur getoon The figure shown	steldie padreserwe voor van 'n gedeelte represents the road reserve of a portion van Nasionale Roete N2 of National Route N2 Section	Vel Sheet 17 of 31 Plan P1231/22
---	---------------------------------------	---	--

PADRESERVE KOÖRDINATE / ROAD RESERVE CO-ORDINATES						
LINKERKANT/LEFT HAND SIDE				REGTERKANT/RIGHT HAND SIDE		
	Y	X	WG 29 <sup>e</sup>		Y	X
L1	-46 514.89	3 492 000.00		R1	-46 620.89	3 492 000.00
L2	-46 554.55	3 491 869.91		R2	-46 634.02	3 491 879.15
L3	-46 571.86	3 491 714.10		R3	-46 654.36	3 491 696.01
L4	-46 598.69	3 491 472.53		R4	-46 680.96	3 491 456.51
L5	-46 572.08	3 491 440.92		R5	-46 691.69	3 491 382.09
L6	-46 578.43	3 491 394.82		R6	-46 699.24	3 491 277.64
L7	-46 611.70	3 491 325.36		R7	-46 694.40	3 491 172.86
L8	-46 604.89	3 491 300.89		R8	-46 702.42	3 491 144.60
L9	-46 589.00	3 491 254.06		R9	-46 703.36	3 491 092.68
L10	-46 589.63	3 491 230.22		R10	-46 689.70	3 491 069.47
L11	-46 610.36	3 491 180.51		R11	-46 686.13	3 491 026.63
L12	-46 597.56	3 491 117.65		R12	-46 679.30	3 490 944.61
L13	-46 583.92	3 491 000.31		R13	-46 664.94	3 490 896.22
L14	-46 582.10	3 490 984.66		R14	-46 640.49	3 490 773.50
L15	-46 554.04	3 490 886.23		R15	-46 641.23	3 490 708.50
L16	-46 552.08	3 490 786.92		R16	-46 601.15	3 490 577.18
L17	-46 537.06	3 490 688.06		R17	-46 586.13	3 490 478.31
L18	-46 518.17	3 490 589.78		R18	-46 602.67	3 490 349.37
L19	-46 513.12	3 490 565.26		R19	-46 578.76	3 490 270.43
L20	-46 503.10	3 490 541.50		R20	-46 573.38	3 490 252.68
L21	-46 479.95	3 490 510.81		R21	-46 559.03	3 490 135.93
L22	-46 482.84	3 490 443.43		R22	-46 557.07	3 490 066.02
L23	-46 477.35	3 490 381.88		R23	-46 547.28	3 489 970.13
L24	-46 481.08	3 490 342.55		R24	-46 564.55	3 489 876.25
L25	-46 473.26	3 490 267.87		R25	-46 591.10	3 489 784.55
L26	-46 463.15	3 490 221.48		R26	-46 667.30	3 489 570.25
L27	-46 451.05	3 490 165.95		R27	-46 692.29	3 489 468.83
L28	-46 467.99	3 489 959.46		R28	-46 707.03	3 489 365.42
L29	-46 460.01	3 489 905.08		R29	-46 711.37	3 489 261.06
L30	-46 500.01	3 489 807.38		R30	-46 732.64	3 489 154.03
L31	-46 494.09	3 489 722.87		R31	-46 703.73	3 489 142.38
L32	-46 550.01	3 489 663.46		R32	-46 703.32	3 489 056.57
L33	-46 590.57	3 489 547.60		R33	-46 693.68	3 489 007.33
L34	-46 599.07	3 489 499.64		R34	-46 710.08	3 488 980.38
L35	-46 599.66	3 489 451.30		R35	-46 697.68	3 488 956.59
L36	-46 609.59	3 489 404.23		R36	-46 684.60	3 488 932.87
L37	-46 625.13	3 489 333.96		R37	-46 662.63	3 488 760.80
L38	-46 624.87	3 489 262.18		R38	-46 668.14	3 488 666.66
L39	-46 614.28	3 489 191.27		R39	-46 679.32	3 488 574.07
L40	-46 603.33	3 489 167.80		R40	-46 693.78	3 488 481.33
L41	-46 612.19	3 489 041.41		R41	-46 706.46	3 488 435.30
L42	-46 589.34	3 488 968.46		R42	-46 744.53	3 488 349.02
L43	-46 563.52	3 488 938.53		R43	-46 795.37	3 488 264.41
L44	-46 580.42	3 488 893.99		R44	-46 997.36	3 488 061.02
L45	-46 554.58	3 488 808.94		R45	-47 103.33	3 488 032.44
L46	-46 577.37	3 488 741.30		R46	-47 180.42	3 487 967.82
L47	-46 580.62	3 488 662.64		R47	-47 229.04	3 487 870.44
L48	-46 584.65	3 488 546.82		R48	-47 323.66	3 487 792.60
L49	-46 614.87	3 488 457.28		R49	-47 391.15	3 487 752.68
L50	-46 631.20	3 488 408.18		R50	-47 460.72	3 487 679.85
L51	-46 677.18	3 488 308.68		R51	-47 542.42	3 487 621.75
				Vel Sheet	18 Van of 31	P1231/22



PADRESERVE KOÖRDINATE / ROAD RESERVE CO-ORDINATES						
LINKERKANT/LEFT HAND SIDE				REGTERKANT/RIGHT HAND SIDE		
	Y	X	WG 29°		Y	X
L52	-46 731.22	3 488 219.68		R52	-47 615.18	3 487 552.79
L53	-46 795.94	3 488 138.12		R53	-47 623.29	3 487 548.55
L54	-46 846.65	3 488 086.60		R54	-47 741.95	3 487 486.49
L55	-46 923.96	3 488 020.16		R55	-47 787.83	3 487 447.85
L56	-47 567.71	3 487 490.58		R56	-47 846.86	3 487 362.20
L57	-47 642.73	3 487 428.87		R57	-48 001.32	3 487 235.15
L58	-47 712.84	3 487 356.69		R58	-48 084.90	3 487 179.34
L59	-47 797.18	3 487 301.81		R59	-48 155.77	3 487 108.09
L60	-48 223.81	3 486 950.87		R60	-48 387.86	3 486 920.65
L61	-48 340.44	3 486 858.47		R61	-48 489.20	3 486 851.39
L62	-48 527.91	3 486 722.45		R62	-48 496.05	3 486 846.17
L63	-48 559.08	3 486 699.84		R63	-48 604.54	3 486 763.46
L64	-48 655.93	3 486 618.78		R64	-48 666.57	3 486 716.33
L65	-48 746.00	3 486 513.79		R65	-48 712.99	3 486 672.30
L66	-48 805.29	3 486 438.14		R66	-48 767.94	3 486 609.30
L67	-48 857.87	3 486 339.01		R67	-48 804.90	3 486 565.26
L68	-48 887.64	3 486 246.28		R68	-48 868.99	3 486 483.54
L69	-48 934.21	3 486 083.80		R69	-48 903.84	3 486 426.10
L70	-48 964.14	3 485 994.48		R70	-48 930.70	3 486 367.51
L71	-49 006.72	3 485 919.97		R71	-48 962.77	3 486 267.98
L72	-49 083.13	3 485 841.92		R72	-49 028.87	3 486 037.49
L73	-49 172.26	3 485 784.71		R73	-49 135.22	3 485 911.70
L74	-49 462.93	3 485 745.79		R74	-49 227.07	3 485 865.72
L75	-49 661.23	3 485 699.88		R75	-49 502.05	3 485 817.41
L76	-49 750.93	3 485 636.89		R76	-49 510.56	3 485 799.72
L77	-49 831.19	3 485 516.63		R77	-49 574.20	3 485 812.08
L78	-49 804.08	3 485 441.10		R78	-49 706.53	3 485 813.83
L79	-49 791.36	3 485 357.21		R79	-49 749.95	3 485 784.08
L80	-49 609.55	3 485 153.47		R80	-49 848.24	3 485 716.73
L81	-49 631.81	3 484 997.85		R81	-49 838.84	3 485 708.46
L82	-49 630.45	3 484 930.66		R82	-49 945.84	3 485 414.59
L83	-49 628.62	3 484 840.62		R83	-49 856.34	3 485 332.78
L84	-49 609.25	3 484 810.61		R84	-49 830.49	3 485 273.63
L85	-49 614.94	3 484 773.56		R85	-49 782.14	3 485 259.56
L86	-49 560.72	3 484 692.31		R86	-49 736.98	3 485 167.18
L87	-49 539.90	3 484 653.71		R87	-49 690.87	3 485 128.26
L88	-49 523.00	3 484 610.90		R88	-49 685.12	3 484 980.50
L89	-49 521.37	3 484 567.06		R89	-49 703.94	3 484 917.76
L90	-49 519.96	3 484 488.23		R90	-49 715.41	3 484 879.52
L91	-49 512.73	3 484 432.05		R91	-49 702.25	3 484 836.27
L92	-49 494.87	3 484 379.50		R92	-49 671.41	3 484 792.95
L93	-49 387.33	3 484 164.92		R93	-49 648.96	3 484 752.52
L94	-49 321.21	3 483 995.21		R94	-49 620.78	3 484 709.44
L95	-49 269.42	3 483 888.63		R95	-49 584.37	3 484 653.80
L96	-49 261.77	3 483 836.72		R96	-49 565.08	3 484 603.24
L97	-49 245.48	3 483 797.76		R97	-49 558.50	3 484 464.46
L98	-49 224.79	3 483 751.25		R98	-49 550.80	3 484 401.02
L99	-49 179.83	3 483 629.17		R99	-49 513.10	3 484 325.97
L100	-49 222.11	3 483 597.85		R100	-49 423.40	3 484 147.72
L101	-49 340.77	3 483 476.47		R101	-49 363.70	3 483 980.24
L102	-49 405.76	3 483 407.92		R102	-49 288.70	3 483 795.86
				Vel Sheet	19 Van of	31 P1231/22

PADRESERWE KOÖRDINATE / ROAD RESERVE CO-ORDINATES							
LINKERKANT/LEFT HAND SIDE				REGTERKANT/RIGHT HAND SIDE			
	Y	X	WG 29°		Y	X	
L103	-49 458.44	3 483 377.99		R103	-49 270.10	3 483 722.40	
L104	-49 507.30	3 483 327.75		R104	-49 282.00	3 483 614.48	
L105	-49 603.39	3 483 111.01		R105	-49 336.00	3 483 541.70	
L106	-49 620.07	3 483 078.44		R106	-49 402.10	3 483 467.88	
L107	-49 657.11	3 483 037.26		R107	-49 517.20	3 483 388.18	
L108	-49 712.13	3 483 020.94		R108	-49 551.40	3 483 329.62	
L109	-49 747.04	3 483 020.41		R109	-49 655.30	3 483 116.31	
L110	-49 788.37	3 483 019.95		R110	-49 687.40	3 483 085.95	
L111	-49 839.02	3 483 010.45		R111	-49 727.40	3 483 060.87	
L112	-49 987.32	3 482 954.12		R112	-49 788.10	3 483 064.93	
L113	-50 035.91	3 482 926.25		R113	-49 852.40	3 483 048.13	
L114	-50 067.81	3 482 885.42		R114	-49 985.60	3 483 003.02	
L115	-50 165.53	3 482 689.77		R115	-50 044.40	3 482 975.65	
L116	-50 190.09	3 482 647.98		R116	-50 093.60	3 482 924.03	
L117	-50 227.05	3 482 624.07		R117	-50 152.20	3 482 818.55	
L118	-50 315.97	3 482 581.41		R118	-50 198.50	3 482 752.15	
L119	-50 345.35	3 482 561.52		R119	-50 219.60	3 482 700.06	
L120	-50 400.00	3 482 503.35		R120	-50 270.10	3 482 665.48	
L121	-50 432.63	3 482 471.85		R121	-50 361.80	3 482 615.02	
L122	-50 477.19	3 482 457.51		R122	-50 410.70	3 482 568.69	
L123	-50 515.00	3 482 448.30		R123	-50 431.70	3 482 535.62	
L124	-50 546.08	3 482 433.69		R124	-50 469.90	3 482 502.63	
L125	-50 574.24	3 482 408.96		R125	-50 530.60	3 482 485.08	
L126	-50 591.88	3 482 382.62		R126	-50 570.10	3 482 471.37	
L127	-50 602.99	3 482 350.77		R127	-50 600.00	3 482 440.02	
L128	-50 611.35	3 482 307.89		R128	-50 627.80	3 482 408.51	
L129	-50 626.85	3 482 264.83		R129	-50 662.40	3 482 291.58	
L130	-50 660.61	3 482 233.26		R130	-50 700.40	3 482 258.07	
L131	-50 731.40	3 482 195.81		R131	-50 753.70	3 482 231.20	
L132	-50 759.30	3 482 168.97		R132	-50 789.90	3 482 198.36	
L133	-50 810.69	3 482 088.90		R133	-50 823.60	3 482 144.55	
L134	-50 824.94	3 482 056.42		R134	-50 856.20	3 482 092.46	
L135	-50 859.77	3 481 921.30		R135	-50 923.70	3 481 880.31	
L136	-50 881.88	3 481 864.26		R136	-50 947.60	3 481 829.10	
L137	-50 903.52	3 481 826.69		R137	-51 057.00	3 481 661.66	
L138	-50 946.48	3 481 757.18		R138	-51 057.30	3 481 579.44	
L139	-51 001.72	3 481 673.47		R139	-51 065.00	3 481 554.60	
L140	-51 017.28	3 481 628.25		R140	-51 107.10	3 481 470.69	
L141	-51 017.67	3 481 565.71		R141	-51 124.60	3 481 425.83	
L142	-51 024.14	3 481 519.94		R142	-51 114.30	3 481 378.50	
L143	-51 071.58	3 481 452.41		R143	-51 097.00	3 481 333.92	
L144	-51 079.48	3 481 420.34		R144	-51 080.10	3 481 321.31	
L145	-51 076.76	3 481 391.61		R145	-51 038.30	3 481 290.16	
L146	-51 062.69	3 481 362.22		R146	-50 984.00	3 481 283.51	
L147	-51 039.09	3 481 339.76		R147	-50 934.10	3 481 277.39	
L148	-51 006.49	3 481 326.82		R148	-50 735.60	3 481 253.06	
L149	-50 492.26	3 481 263.51		R149	-50 695.90	3 481 248.20	
L150	-50 450.48	3 481 256.59		R150	-50 460.60	3 481 217.91	
L151	-50 409.35	3 481 243.93		R151	-50 408.30	3 481 199.94	
L152	-50 370.64	3 481 225.12		R152	-50 361.60	3 481 170.50	
L153	-50 335.28	3 481 200.60		R153	-50 322.80	3 481 131.14	
				Vel Sheet	20	Van of 31	P1231/22



PADRESERWE KOÖRDINATE / ROAD RESERVE CO-ORDINATES									
LINKERKANT/LEFT HAND SIDE					REGTERKANT/RIGHT HAND SIDE				
	Y		X	WG 29°		Y		X	
L154	-50 286.26	3	481	155.98	R154	-50 294.00	3	481	083.95
L155	-50 257.81	3	481	100.65	R155	-50 276.50	3	481	030.59
L156	-50 232.21	3	481	040.96	R156	-50 261.00	3	480	952.35
L157	-50 218.26	3	480	941.85	R157	-50 255.20	3	480	908.66
L158	-50 198.04	3	480	897.71	R158	-50 225.50	3	480	868.65
L159	-50 154.00	3	480	869.37	R159	-50 191.90	3	480	836.86
L160	-50 091.20	3	480	851.70	R160	-50 117.80	3	480	805.40
L161	-50 056.52	3	480	824.83	R161	-50 078.10	3	480	781.25
L162	-50 026.69	3	480	791.35	R162	-50 061.50	3	480	738.85
L163	-50 016.66	3	480	744.17	R163	-50 070.20	3	480	681.36
L164	-50 015.69	3	480	695.43	R164	-50 095.90	3	480	655.22
L165	-50 040.44	3	480	654.29	R165	-50 397.90	3	480	462.74
L166	-50 070.86	3	480	618.26	R166	-50 454.90	3	480	422.10
L167	-50 161.64	3	480	566.06	R167	-50 481.40	3	480	357.97
L168	-50 314.27	3	480	468.64	R168	-50 497.10	3	480	286.57
L169	-50 377.63	3	480	428.26	R169	-50 470.90	3	480	226.90
L170	-50 419.13	3	480	392.38	R170	-50 248.70	3	479	824.27
L171	-50 443.04	3	480	346.64	R171	-50 233.90	3	479	774.64
L172	-50 448.97	3	480	312.77	R172	-50 240.60	3	479	723.68
L173	-50 442.32	3	480	262.42	R173	-50 421.80	3	479	441.79
L174	-50 328.30	3	480	056.81	R174	-50 452.40	3	479	388.34
L175	-50 202.69	3	479	824.30	R175	-50 478.50	3	479	332.78
L176	-50 189.10	3	479	755.10	R176	-50 501.60	3	479	277.39
L177	-50 200.00	3	479	684.36	R177	-50 548.00	3	479	165.78
L178	-50 233.57	3	479	653.84	R178	-50 566.40	3	479	106.76
L179	-50 387.69	3	479	421.00	R179	-50 570.80	3	479	085.08
L180	-50 433.78	3	479	335.35	R180	-50 586.70	3	478	975.53
L181	-50 522.75	3	479	116.05	R181	-50 607.00	3	478	891.95
L182	-50 534.28	3	479	059.67	R182	-50 626.40	3	478	836.88
L183	-50 539.53	3	479	019.99	R183	-50 650.10	3	478	783.53
L184	-50 544.48	3	478	985.13	R184	-50 678.10	3	478	732.26
L185	-50 553.21	3	478	939.18	R185	-50 710.00	3	478	683.37
L186	-50 569.67	3	478	836.44	R186	-50 796.40	3	478	576.59
L187	-50 654.84	3	478	693.79	R187	-50 821.40	3	478	540.01
L188	-50 688.31	3	478	641.84	R188	-50 838.90	3	478	500.49
L189	-50 776.85	3	478	536.13	R189	-50 849.20	3	478	455.80
L190	-50 801.96	3	478	484.97	R190	-50 850.90	3	478	413.44
L191	-50 811.01	3	478	415.08	R191	-50 848.40	3	478	336.18
L192	-50 797.57	3	478	354.69	R192	-50 858.30	3	478	282.96
L193	-50 810.08	3	478	289.00	R193	-50 882.70	3	478	234.67
L194	-50 839.37	3	478	228.43	R194	-50 921.70	3	478	193.77
L195	-50 875.92	3	478	174.22	R195	-50 966.40	3	478	167.80
L196	-50 910.94	3	478	146.53	R196	-51 021.80	3	478	152.03
L197	-50 950.55	3	478	125.98	R197	-51 102.80	3	478	139.21
L198	-50 991.89	3	478	112.88	R198	-51 298.00	3	478	095.98
L199	-51 092.01	3	478	090.39	R199	-51 358.70	3	478	080.80
L200	-51 106.60	3	478	063.77	R200	-51 418.60	3	478	051.58
L201	-51 123.64	3	478	048.83	R201	-51 468.10	3	478	006.53
L202	-51 179.78	3	478	028.05	R202	-51 502.90	3	477	949.36
L203	-51 295.95	3	477	996.58	R203	-51 520.10	3	477	884.71
L204	-51 369.94	3	478	009.04	R204	-51 518.50	3	477	817.81
					<div> <div>Vel Sheet</div> <div>21</div> <div>Van of</div> <div>31</div> <div>P1231/22</div> </div>				

PADRESERWE KOÖRDINATE / ROAD RESERVE CO-ORDINATES									
LINKERKANT/LEFT HAND SIDE					REGTERKANT/RIGHT HAND SIDE				
	Y	X	WG 29 <sup>o</sup>			Y	X		
L205	-51 410.06	3 477 980.12			R205	-51 498.00	3 477 754.10		
L206	-51 433.82	3 477 937.16			R206	-51 460.40	3 477 698.72		
L207	-51 461.58	3 477 894.89			R207	-51 410.50	3 477 656.47		
L208	-51 471.32	3 477 843.65			R208	-51 316.60	3 477 588.53		
L209	-51 460.06	3 477 792.19			R209	-51 282.00	3 477 546.70		
L210	-51 434.75	3 477 745.99			R210	-51 257.40	3 477 498.25		
L211	-51 392.96	3 477 713.83			R211	-51 244.10	3 477 445.57		
L212	-51 297.97	3 477 675.43			R212	-51 242.80	3 477 391.25		
L213	-51 238.15	3 477 575.48			R213	-51 253.40	3 477 337.97		
L214	-51 205.10	3 477 517.85			R214	-51 275.50	3 477 288.35		
L215	-51 184.08	3 477 386.18			R215	-51 308.00	3 477 244.92		
L216	-51 205.81	3 477 322.80			R216	-51 350.20	3 477 205.89		
L217	-51 226.29	3 477 259.43			R217	-51 410.50	3 477 151.03		
L218	-51 286.73	3 477 195.50			R218	-51 466.70	3 477 091.31		
L219	-51 331.34	3 477 153.76			R219	-51 505.60	3 477 043.67		
L220	-51 375.54	3 477 115.36			R220	-51 541.50	3 476 993.79		
L221	-51 428.95	3 477 058.54			R221	-51 574.40	3 476 941.90		
L222	-51 478.43	3 476 996.51			R222	-51 604.80	3 476 890.59		
L223	-51 510.90	3 476 949.52			R223	-51 640.30	3 476 851.15		
L224	-51 537.80	3 476 897.04			R224	-51 684.20	3 476 824.67		
L225	-51 574.43	3 476 846.18			R225	-51 733.70	3 476 795.42		
L226	-51 603.53	3 476 812.60			R226	-51 827.80	3 476 757.24		
L227	-51 657.81	3 476 773.82			R227	-51 883.90	3 476 722.63		
L228	-51 715.31	3 476 748.96			R228	-51 929.40	3 476 674.23		
L229	-51 806.59	3 476 711.96			R229	-51 959.90	3 476 622.29		
L230	-51 852.38	3 476 683.84			R230	-52 053.50	3 476 440.98		
L231	-51 888.82	3 476 645.06			R231	-52 086.50	3 476 356.65		
L232	-51 917.16	3 476 596.27			R232	-52 082.30	3 476 287.40		
L233	-52 008.33	3 476 419.61			R233	-52 052.00	3 476 226.10		
L234	-52 025.45	3 476 368.78			R234	-52 019.50	3 476 172.68		
L235	-52 027.70	3 476 316.15			R235	-51 988.70	3 476 123.33		
L236	-52 015.02	3 476 265.01			R236	-51 968.00	3 476 073.29		
L237	-51 988.44	3 476 216.63			R237	-51 959.90	3 476 020.18		
L238	-51 955.66	3 476 165.62			R238	-51 962.20	3 475 962.81		
L239	-51 926.68	3 476 107.68			R239	-51 978.00	3 475 752.79		
L240	-51 911.51	3 476 043.56			R240	-51 987.70	3 475 623.80		
L241	-51 910.97	3 475 979.12			R241	-51 995.60	3 475 568.65		
L242	-51 925.87	3 475 779.58			R242	-52 014.80	3 475 517.85		
L243	-51 934.21	3 475 671.54			R243	-52 042.60	3 475 465.26		
L244	-51 939.80	3 475 599.13			R244	-52 067.40	3 475 404.54		
L245	-51 953.32	3 475 535.43			R245	-52 075.20	3 475 338.10		
L246	-51 979.60	3 475 477.14			R246	-52 066.60	3 475 274.51		
L247	-52 013.81	3 475 408.32			R247	-52 054.60	3 475 215.57		
L248	-52 024.86	3 475 356.98			R248	-52 034.70	3 475 117.96		
L249	-52 021.24	3 475 303.17			R249	-52 028.70	3 475 063.48		
L250	-51 989.61	3 475 147.20			R250	-52 037.00	3 475 010.04		
L251	-51 979.47	3 475 085.13			R251	-52 053.00	3 474 951.64		
L252	-51 983.77	3 475 018.19			R252	-52 061.20	3 474 887.29		
L253	-51 999.54	3 474 958.55			R253	-52 056.60	3 474 823.25		
L254	-52 010.19	3 474 904.24			R254	-52 049.80	3 474 766.34		
L255	-52 007.23	3 474 830.58			R255	-52 055.60	3 474 714.18		
					<div> <div>Vel</div> <div>22</div> <div>Van</div> <div>31</div> <div>Sheet</div> <div>of</div> <div>P1231/22</div> </div>				

PADRESERVE KOÖRDINATE / ROAD RESERVE CO-ORDINATES						
LINKERKANT/LEFT HAND SIDE				REGTERKANT/RIGHT HAND SIDE		
	Y	X	WG 29 <sup>e</sup>		Y	X
L256	-52 000.00	3 474 768.04		R256	-52 075.90	3 474 663.45
L257	-52 007.25	3 474 701.60		R257	-52 112.80	3 474 592.18
L258	-52 031.40	3 474 640.81		R258	-52 135.80	3 474 532.47
L259	-52 067.74	3 474 570.52		R259	-52 149.50	3 474 470.18
L260	-52 087.94	3 474 518.06		R260	-52 163.40	3 474 389.55
L261	-52 100.06	3 474 463.18		R261	-52 174.70	3 474 330.26
L262	-52 105.41	3 474 405.02		R262	-52 168.40	3 474 269.63
L263	-52 116.47	3 474 265.41		R263	-52 174.10	3 474 215.38
L264	-52 126.21	3 474 201.06		R264	-52 198.90	3 474 177.21
L265	-52 148.99	3 474 157.57		R265	-52 240.00	3 474 157.26
L266	-52 185.58	3 474 125.24		R266	-52 287.17	3 474 161.10
L267	-52 231.31	3 474 108.04		R267	-52 478.70	3 474 220.62
L268	-52 279.33	3 474 107.96		R268	-52 547.20	3 474 228.82
L269	-52 321.69	3 474 118.89		R269	-52 612.00	3 474 210.60
L270	-52 492.53	3 474 172.55		R270	-52 740.90	3 474 154.86
L271	-52 542.80	3 474 179.02		R271	-52 942.80	3 474 067.49
L272	-52 593.00	3 474 164.37		R272	-53 011.50	3 474 037.05
L273	-52 776.17	3 474 085.14		R273	-53 071.50	3 474 003.96
L274	-52 959.08	3 474 005.99		R274	-53 122.40	3 473 969.65
L275	-53 011.90	3 473 980.69		R275	-53 286.30	3 473 855.05
L276	-53 045.19	3 473 961.46		R276	-53 451.41	3 473 739.61
L277	-53 093.77	3 473 928.67		R277	-53 515.10	3 473 695.30
L278	-53 257.68	3 473 814.07		R278	-53 560.60	3 473 675.18
L279	-53 487.53	3 473 653.60		R279	-53 610.60	3 473 678.01
L280	-53 528.21	3 473 632.31		R280	-53 824.10	3 473 729.95
L281	-53 575.73	3 473 623.67		R281	-53 883.20	3 473 737.53
L282	-53 620.83	3 473 629.05		R282	-53 953.50	3 473 731.45
L283	-53 679.97	3 473 643.33		R283	-54 016.10	3 473 711.40
L284	-53 740.58	3 473 648.04		R284	-54 195.40	3 473 621.87
L285	-53 801.96	3 473 649.58		R285	-54 248.30	3 473 599.91
L286	-53 853.26	3 473 682.83		R286	-54 303.30	3 473 583.25
L287	-53 907.46	3 473 687.22		R287	-54 360.70	3 473 571.57
L288	-53 961.24	3 473 678.18		R288	-54 424.10	3 473 551.70
L289	-54 012.59	3 473 657.62		R289	-54 479.50	3 473 511.01
L290	-54 137.51	3 473 594.88		R290	-54 517.70	3 473 458.76
L291	-54 192.75	3 473 568.18		R291	-54 612.40	3 473 305.53
L292	-54 251.21	3 473 546.14		R292	-54 656.50	3 473 238.66
L293	-54 311.78	3 473 530.00		R293	-54 715.67	3 473 134.84
L294	-54 351.45	3 473 522.44		R294	-54 775.29	3 473 058.26
L295	-54 402.23	3 473 506.78		R295	-54 846.24	3 473 002.16
L296	-54 443.09	3 473 476.79		R296	-54 926.63	3 472 963.59
L297	-54 475.29	3 473 432.32		R297	-55 006.07	3 472 954.19
L298	-54 569.96	3 473 279.23		R298	-55 005.92	3 472 962.73
L299	-54 667.01	3 473 103.09		R299	-55 013.58	3 473 012.81
L300	-54 730.95	3 473 022.00		R300	-55 018.24	3 473 032.56
L301	-54 806.09	3 472 943.32		R301	-55 013.30	3 473 089.22
L302	-54 941.73	3 472 873.47		R302	-55 018.10	3 473 127.17
L303	-54 993.72	3 472 861.99		R303	-55 015.56	3 473 137.68
L304	-54 987.60	3 472 842.16		R304	-55 039.11	3 473 150.09
L305	-54 984.98	3 472 824.64		R305	-55 056.42	3 473 131.87
L306	-54 989.30	3 472 804.25		R306	-55 056.60	3 473 086.95
				Vel Sheet	23 of	31 P1231/22

PADRESERWE KOÖRDINATE / ROAD RESERVE CO-ORDINATES							
LINKERKANT/LEFT HAND SIDE				REGTERKANT/RIGHT HAND SIDE			
	Y	X	WG 29 <sup>a</sup>		Y	X	
L307	-54 991.98	3 472 781.60		R307	-55 041.88	3 473 039.57	
L308	-54 992.76	3 472 742.33		R308	-55 042.05	3 472 951.65	
L309	-54 989.85	3 472 705.03		R309	-55 139.89	3 472 949.64	
L310	-54 982.83	3 472 681.99		R310	-55 200.19	3 472 924.85	
L311	-54 974.45	3 472 658.85		R311	-55 240.73	3 472 906.62	
L312	-54 953.16	3 472 616.82		R312	-55 294.94	3 472 877.80	
L313	-54 938.40	3 472 583.80		R313	-55 613.55	3 472 763.08	
L314	-54 932.45	3 472 547.23		R314	-55 739.58	3 472 717.10	
L315	-54 938.06	3 472 499.50		R315	-55 835.04	3 472 682.27	
L316	-54 950.81	3 472 479.26		R316	-57 622.72	3 472 038.62	
L317	-54 974.87	3 472 484.84		R317	-57 719.48	3 472 003.09	
L318	-54 975.39	3 472 503.52		R318	-57 804.20	3 471 940.00	
L319	-54 971.22	3 472 528.33		R319	-57 870.51	3 471 863.17	
L320	-54 971.59	3 472 544.44		R320	-58 341.58	3 471 342.93	
L321	-54 974.03	3 472 582.34		R321	-58 457.43	3 471 166.62	
L322	-54 977.08	3 472 597.17		R322	-58 574.51	3 471 013.63	
L323	-55 002.03	3 472 626.87		R323	-58 633.65	3 470 939.38	
L324	-55 035.39	3 472 687.16		R324	-58 709.65	3 470 881.37	
L325	-55 038.40	3 472 717.95		R325	-58 797.59	3 470 843.93	
L326	-55 048.46	3 472 776.15		R326	-58 889.66	3 470 818.87	
L327	-55 056.10	3 472 798.65		R327	-58 987.34	3 470 809.82	
L328	-55 044.79	3 472 857.04		R328	-59 642.29	3 470 759.32	
L329	-55 057.71	3 472 856.02		R329	-59 679.35	3 470 805.06	
L330	-55 099.86	3 472 844.61		R330	-59 735.62	3 470 752.59	
L331	-55 158.74	3 472 856.29		R331	-59 883.55	3 470 730.70	
L332	-55 183.28	3 472 854.52		R332	-59 978.60	3 470 683.97	
L333	-55 278.06	3 472 830.93		R333	-60 055.79	3 470 613.12	
L334	-55 601.04	3 472 728.50		R334	-60 110.20	3 470 523.45	
L335	-55 713.35	3 472 687.02		R335	-60 301.71	3 470 061.48	
L336	-55 976.19	3 472 591.68		R336	-60 346.13	3 469 974.76	
L337	-57 613.43	3 472 001.84		R337	-60 399.38	3 469 890.78	
L338	-57 702.11	3 471 970.86		R338	-60 430.37	3 469 842.60	
L339	-57 774.30	3 471 912.00		R339	-60 506.91	3 469 723.58	
L340	-57 843.54	3 471 839.77		R340	-60 570.00	3 469 652.77	
L341	-58 311.98	3 471 321.01		R341	-60 649.21	3 469 603.30	
L342	-58 472.73	3 471 063.31		R342	-60 739.67	3 469 577.92	
L343	-58 506.99	3 470 960.83		R343	-60 794.02	3 469 590.39	
L344	-58 598.36	3 470 899.05		R344	-60 964.97	3 469 628.44	
L345	-58 681.77	3 470 833.80		R345	-61 112.99	3 469 677.18	
L346	-58 778.44	3 470 790.06		R346	-61 161.52	3 469 695.64	
L347	-58 882.76	3 470 774.29		R347	-61 160.77	3 469 697.32	
L348	-58 984.03	3 470 763.87		R348	-61 171.34	3 469 701.48	
L349	-59 777.54	3 470 709.43		R349	-61 191.21	3 469 709.74	
L350	-59 871.17	3 470 692.67		R350	-61 275.86	3 469 744.62	
L351	-59 955.52	3 470 651.30		R351	-61 330.95	3 469 763.35	
L352	-60 024.80	3 470 587.83		R352	-61 377.96	3 469 782.57	
L353	-60 073.58	3 470 507.36		R353	-61 511.96	3 469 834.34	
L354	-60 265.10	3 470 045.36		R354	-61 601.43	3 469 872.18	
L355	-60 280.09	3 470 016.11		R355	-61 639.82	3 469 904.68	
L356	-60 291.54	3 469 993.78		R356	-61 601.40	3 470 054.18	
L357	-60 311.86	3 469 954.12		R357	-61 623.47	3 470 060.61	
				Vel Sheet	24	Van of 31	P1231/22



PADRESERWE KOÖRDINATE / ROAD RESERVE CO-ORDINATES							
LINKERKANT/LEFT HAND SIDE				REGTERKANT/RIGHT HAND SIDE			
	Y	X	WG 29 <sup>e</sup>		Y	X	
L358	-60 365.70	3 469 869.20		R358	-61 672.55	3 469 906.06	
L359	-60 425.09	3 469 776.89		R359	-61 716.86	3 469 914.40	
L360	-60 474.31	3 469 700.39		R360	-61 719.43	3 469 909.54	
L361	-60 544.28	3 469 622.14		R361	-61 807.60	3 469 946.62	
L362	-60 633.68	3 469 566.42		R362	-61 886.78	3 469 976.34	
L363	-60 735.17	3 469 538.16		R363	-62 017.19	3 470 026.60	
L364	-60 837.54	3 469 528.90		R364	-62 019.03	3 470 021.78	
L365	-60 921.70	3 469 546.93		R365	-62 262.61	3 470 114.43	
L366	-61 073.98	3 469 614.12		R366	-62 258.35	3 470 125.65	
L367	-61 093.69	3 469 622.89		R367	-62 278.68	3 470 133.70	
L368	-61 107.68	3 469 628.51		R368	-62 327.21	3 470 146.05	
L369	-61 136.41	3 469 639.39		R369	-62 350.13	3 470 153.06	
L370	-61 161.85	3 469 648.38		R370	-62 351.10	3 470 148.01	
L371	-61 175.41	3 469 652.90		R371	-62 398.22	3 470 165.05	
L372	-61 181.62	3 469 654.72		R372	-62 397.31	3 470 167.50	
L373	-61 218.21	3 469 669.21		R373	-62 402.71	3 470 169.15	
L374	-61 268.87	3 469 690.57		R374	-62 583.69	3 470 227.90	
L375	-61 267.61	3 469 693.19		R375	-62 652.55	3 470 244.93	
L376	-61 347.98	3 469 723.76		R376	-62 740.43	3 470 266.86	
L377	-61 478.60	3 469 773.44		R377	-62 776.41	3 470 276.19	
L378	-61 514.71	3 469 787.41		R378	-62 827.82	3 470 293.30	
L379	-61 555.92	3 469 802.84		R379	-62 827.13	3 470 296.08	
L380	-61 563.42	3 469 804.50		R380	-62 916.86	3 470 319.67	
L381	-61 581.51	3 469 809.31		R381	-63 132.55	3 470 383.03	
L382	-61 617.82	3 469 823.13		R382	-63 165.94	3 470 394.30	
L383	-61 618.82	3 469 820.50		R383	-63 325.59	3 470 439.39	
L384	-61 664.72	3 469 823.85		R384	-63 326.37	3 470 434.17	
L385	-61 679.70	3 469 772.40		R385	-63 375.29	3 470 447.92	
L386	-61 707.34	3 469 781.07		R386	-63 437.17	3 470 467.60	
L387	-61 692.32	3 469 831.03		R387	-63 436.34	3 470 470.86	
L388	-61 730.02	3 469 861.75		R388	-63 491.72	3 470 486.30	
L389	-61 782.56	3 469 882.15		R389	-63 527.93	3 470 496.40	
L390	-61 780.58	3 469 888.30		R390	-63 569.41	3 470 524.60	
L391	-61 867.03	3 469 920.52		R391	-63 557.73	3 470 607.67	
L392	-61 906.76	3 469 933.74		R392	-63 581.93	3 470 612.52	
L393	-61 948.77	3 469 950.09		R393	-63 602.70	3 470 530.28	
L394	-61 948.41	3 469 951.39		R394	-63 650.53	3 470 524.66	
L395	-62 018.38	3 469 978.17		R395	-63 658.82	3 470 526.34	
L396	-62 082.92	3 470 002.21		R396	-63 717.43	3 470 532.32	
L397	-62 118.25	3 470 013.99		R397	-63 764.36	3 470 540.71	
L398	-62 123.19	3 470 015.81		R398	-63 796.43	3 470 547.28	
L399	-62 147.19	3 470 024.82		R399	-63 859.85	3 470 559.03	
L400	-62 165.83	3 470 031.21		R400	-63 919.30	3 470 566.83	
L401	-62 164.29	3 470 034.24		R401	-63 931.05	3 470 567.25	
L402	-62 206.44	3 470 050.27		R402	-63 989.50	3 470 573.25	
L403	-62 208.21	3 470 045.60		R403	-64 209.81	3 470 597.62	
L404	-62 223.29	3 470 051.58		R404	-64 298.72	3 470 608.55	
L405	-62 267.99	3 470 069.25		R405	-64 324.85	3 470 610.47	
L406	-62 270.66	3 470 069.16		R406	-64 371.78	3 470 621.05	
L407	-62 273.51	3 470 060.59		R407	-64 530.88	3 470 628.73	
L408	-62 295.71	3 470 068.19		R408	-64 564.39	3 470 635.63	
				<div> <div>Vel</div> <div>25</div> <div>Van</div> <div>31</div> <div>Sheet</div> <div>of</div> </div> <div>P1231/22</div>			

PADRESERWE KOÖRDINATE / ROAD RESERVE CO-ORDINATES									
LINKERKANT/LEFT HAND SIDE					REGTERKANT/RIGHT HAND SIDE				
	Y	X	WG 29 <sup>a</sup>		Y	X			
L409	-62 341.95	3 470 087.86		R409	-64 646.87	3 470 646.45			
L410	-62 354.90	3 470 094.86		R410	-64 736.56	3 470 649.32			
L411	-62 351.97	3 470 100.89		R411	-64 770.55	3 470 653.06			
L412	-62 392.51	3 470 120.46		R412	-64 881.05	3 470 647.41			
L413	-62 409.84	3 470 126.73		R413	-64 893.89	3 470 664.76			
L414	-62 445.72	3 470 137.40		R414	-64 928.46	3 470 653.01			
L415	-62 451.31	3 470 136.99		R415	-64 950.16	3 470 641.93			
L416	-62 479.51	3 470 143.76		R416	-65 004.33	3 470 627.96			
L417	-62 536.02	3 470 158.23		R417	-65 004.97	3 470 629.31			
L418	-62 594.90	3 470 173.43		R418	-65 031.30	3 470 623.53			
L419	-62 644.31	3 470 179.74		R419	-65 166.22	3 470 654.61			
L420	-62 652.36	3 470 185.77		R420	-65 325.10	3 470 649.03			
L421	-62 660.58	3 470 194.35		R421	-65 451.34	3 470 705.17			
L422	-62 673.28	3 470 199.55		R422	-65 489.44	3 470 738.74			
L423	-62 799.07	3 470 236.91		R423	-65 457.00	3 470 873.28			
L424	-62 928.07	3 470 274.98		R424	-65 435.85	3 470 957.54			
L425	-62 932.81	3 470 273.79		R425	-65 429.91	3 470 974.29			
L426	-63 002.43	3 470 292.21		R426	-65 424.44	3 470 995.51			
L427	-63 016.88	3 470 297.38		R427	-65 418.79	3 471 014.91			
L428	-63 059.65	3 470 308.30		R428	-65 412.54	3 471 034.12			
L429	-63 064.46	3 470 309.76		R429	-65 405.98	3 471 052.32			
L430	-63 200.97	3 470 348.82		R430	-65 436.50	3 471 063.31			
L431	-63 202.48	3 470 351.18		R431	-65 461.34	3 470 982.75			
L432	-63 341.12	3 470 392.06		R432	-65 484.50	3 470 946.96			
L433	-63 393.55	3 470 406.32		R433	-65 500.85	3 470 889.13			
L434	-63 469.78	3 470 422.78		R434	-65 516.84	3 470 826.61			
L435	-63 470.59	3 470 419.71		R435	-65 619.77	3 470 860.31			
L436	-63 547.27	3 470 438.75		R436	-65 719.98	3 470 815.45			
L437	-63 593.17	3 470 440.32		R437	-65 739.00	3 470 822.95			
L438	-63 620.44	3 470 336.21		R438	-65 832.91	3 470 846.80			
L439	-63 642.18	3 470 341.98		R439	-66 006.99	3 470 915.41			
L440	-63 621.54	3 470 446.51		R440	-66 101.59	3 470 950.06			
L441	-63 661.48	3 470 476.54		R441	-66 202.76	3 470 977.84			
L442	-63 801.40	3 470 507.59		R442	-66 308.08	3 470 986.69			
L443	-63 929.33	3 470 519.36		R443	-66 411.56	3 470 977.51			
L444	-63 933.15	3 470 509.80		R444	-66 511.40	3 470 968.17			
L445	-63 940.58	3 470 512.54		R445	-66 610.74	3 470 956.35			
L446	-64 600.81	3 470 588.94		R446	-66 709.10	3 470 937.81			
L447	-64 620.14	3 470 586.69		R447	-66 807.62	3 470 920.40			
L448	-64 629.37	3 470 591.56		R448	-67 005.96	3 470 894.54			
L449	-64 636.32	3 470 597.72		R449	-67 105.19	3 470 882.05			
L450	-64 677.57	3 470 603.03		R450	-67 203.81	3 470 865.29			
L451	-64 769.69	3 470 605.96		R451	-67 425.54	3 470 832.55			
L452	-64 850.68	3 470 600.49		R452	-67 518.31	3 470 901.81			
L453	-64 855.05	3 470 590.76		R453	-67 551.29	3 470 896.94			
L454	-64 920.68	3 470 582.49		R454	-67 569.97	3 471 020.87			
L455	-64 922.20	3 470 576.09		R455	-67 578.09	3 471 043.08			
L456	-64 940.44	3 470 554.72		R456	-67 604.63	3 471 034.50			
L457	-64 948.52	3 470 559.81		R457	-67 601.54	3 471 026.50			
L458	-64 941.22	3 470 571.40		R458	-67 569.17	3 470 811.33			
L459	-64 938.78	3 470 580.21		R459	-67 797.37	3 470 777.62			
Vel Sheet					26	Van of	31	P1231/22	

PADRESERVE KOÖRDINATE / ROAD RESERVE CO-ORDINATES						
LINKERKANT/LEFT HAND SIDE				REGTERKANT/RIGHT HAND SIDE		
	Y	X	WG 29 <sup>a</sup>		Y	X
L460	-64 966.66	3 470 576.69		R460	-67 896.83	3 470 763.10
L461	-64 982.94	3 470 576.73		R461	-67 997.31	3 470 742.57
L462	-64 985.03	3 470 580.86		R462	-68 095.73	3 470 713.75
L463	-65 068.52	3 470 569.59		R463	-68 191.41	3 470 676.84
L464	-65 201.94	3 470 551.57		R464	-68 283.69	3 470 632.10
L465	-65 518.64	3 470 556.88		R465	-68 371.92	3 470 579.82
L466	-65 534.96	3 470 497.33		R466	-68 458.69	3 470 523.40
L467	-65 536.04	3 470 494.30		R467	-68 543.04	3 470 464.22
L468	-65 545.05	3 470 459.95		R468	-68 606.32	3 470 381.80
L469	-65 595.02	3 470 468.28		R469	-69 079.91	3 469 866.13
L470	-65 597.45	3 470 514.18		R470	-69 147.50	3 469 792.54
L471	-65 592.47	3 470 579.06		R471	-69 250.97	3 469 697.43
L472	-65 652.11	3 470 607.12		R472	-69 327.88	3 469 636.82
L473	-65 653.86	3 470 674.56		R473	-69 408.66	3 469 581.48
L474	-65 648.14	3 470 692.34		R474	-69 492.94	3 469 531.64
L475	-65 661.06	3 470 712.45		R475	-69 580.35	3 469 487.53
L476	-65 749.93	3 470 747.85		R476	-69 670.51	3 469 449.33
L477	-66 038.65	3 470 832.46		R477	-69 763.01	3 469 417.23
L478	-66 128.33	3 470 874.66		R478	-69 857.45	3 469 391.36
L479	-66 216.94	3 470 899.09		R479	-69 954.23	3 469 370.92
L480	-66 307.24	3 470 906.68		R480	-70 052.25	3 469 351.14
L481	-66 400.54	3 470 898.27		R481	-70 641.09	3 469 231.91
L482	-66 894.00	3 470 818.78		R482	-70 741.41	3 469 200.98
L483	-66 992.96	3 470 804.40		R483	-70 834.97	3 469 151.83
L484	-67 091.85	3 470 789.56		R484	-70 845.46	3 469 143.48
L485	-67 191.47	3 470 779.77		R485	-70 917.66	3 469 086.00
L486	-67 530.60	3 470 732.94		R486	-70 986.44	3 469 007.25
L487	-67 523.76	3 470 684.84		R487	-71 046.51	3 468 926.75
L488	-67 508.13	3 470 681.45		R488	-71 090.70	3 468 867.31
L489	-67 504.06	3 470 652.87		R489	-71 102.64	3 468 851.26
L490	-67 517.28	3 470 645.35		R490	-71 344.85	3 468 525.51
L491	-67 587.11	3 470 635.04		R491	-71 358.55	3 468 507.55
L492	-67 655.76	3 470 686.01		R492	-71 444.01	3 468 395.47
L493	-67 660.04	3 470 715.01		R493	-71 504.27	3 468 329.06
L494	-67 884.10	3 470 684.12		R494	-71 625.96	3 468 216.06
L495	-67 978.05	3 470 664.92		R495	-71 827.09	3 468 360.09
L496	-68 070.07	3 470 637.98		R496	-71 847.93	3 468 333.40
L497	-68 159.54	3 470 603.47		R497	-71 825.06	3 468 316.37
L498	-68 245.81	3 470 561.63		R498	-71 772.35	3 468 239.10
L499	-68 328.31	3 470 512.75		R499	-71 736.68	3 468 152.19
L500	-68 406.46	3 470 457.18		R500	-71 814.66	3 467 927.40
L501	-68 479.70	3 470 395.29		R501	-71 943.84	3 467 724.75
L502	-68 547.66	3 470 327.40		R502	-72 561.40	3 466 898.03
L503	-69 088.72	3 469 738.28		R503	-72 584.44	3 466 875.54
L504	-69 199.39	3 469 636.27		R504	-72 632.13	3 466 811.70
L505	-69 280.49	3 469 572.37		R505	-72 688.64	3 466 727.70
L506	-69 365.66	3 469 514.01		R506	-72 901.38	3 466 442.90
L507	-69 454.53	3 469 461.46		R507	-73 021.32	3 466 287.43
L508	-69 546.71	3 469 414.94		R508	-73 062.51	3 466 234.98
L509	-69 641.78	3 469 374.67		R509	-73 135.92	3 466 171.80
L510	-69 739.32	3 469 340.82		R510	-73 218.08	3 466 126.73
				Vel Sheet	27 Van of 31	P1231/22



PADRESERWE KOÖRDINATE / ROAD RESERVE CO-ORDINATES						
LINKERKANT/LEFT HAND SIDE				REGTERKANT/RIGHT HAND SIDE		
	Y	X	WG 29 <sup>o</sup>		Y	X
L511	-69 864.31	3 469 306.71		R511	-73 389.88	3 466 058.70
L512	-69 906.74	3 469 299.20		R512	-73 628.72	3 465 981.41
L513	-70 575.20	3 469 163.96		R513	-73 768.48	3 465 936.18
L514	-70 651.23	3 469 140.88		R514	-73 855.50	3 465 900.26
L515	-70 702.02	3 469 119.82		R515	-73 908.34	3 465 878.44
L516	-70 742.21	3 469 099.62		R516	-74 110.39	3 465 738.40
L517	-70 782.66	3 469 076.15		R517	-74 167.96	3 465 672.18
L518	-70 852.29	3 469 022.40		R518	-74 195.29	3 465 653.89
L519	-70 934.60	3 468 942.91		R519	-74 282.55	3 465 559.26
L520	-71 348.78	3 468 386.07		R520	-74 318.17	3 465 502.72
L521	-71 426.21	3 468 281.98		R521	-74 341.04	3 465 444.08
L522	-71 457.47	3 468 226.65		R522	-74 444.50	3 465 266.36
L523	-71 414.06	3 468 125.52		R523	-74 531.69	3 465 190.35
L524	-71 474.55	3 467 936.88		R524	-74 538.19	3 465 089.49
L525	-71 592.04	3 467 837.78		R525	-74 555.47	3 465 069.74
L526	-71 661.65	3 467 675.66		R526	-74 600.04	3 464 993.50
L527	-71 686.74	3 467 594.62		R527	-74 637.46	3 464 918.78
L528	-71 732.54	3 467 608.79		R528	-74 744.48	3 464 767.86
L529	-71 723.97	3 467 634.63		R529	-74 824.67	3 464 684.15
L530	-71 661.48	3 467 818.61		R530	-74 960.61	3 464 615.94
L531	-71 758.01	3 467 835.80		R531	-75 090.73	3 464 550.64
L532	-71 773.99	3 467 814.31		R532	-75 236.85	3 464 477.32
L533	-72 116.02	3 467 354.31		R533	-75 650.22	3 464 269.76
L534	-72 172.41	3 467 258.91		R534	-75 689.17	3 464 225.94
L535	-72 223.18	3 467 192.09		R535	-75 741.60	3 464 166.95
L536	-72 256.20	3 467 152.11		R536	-75 792.65	3 464 109.52
L537	-72 295.03	3 467 113.57		R537	-75 845.78	3 464 049.75
L538	-72 335.27	3 467 027.64		R538	-75 880.51	3 464 010.68
L539	-72 356.01	3 466 994.24		R539	-75 942.74	3 463 940.66
L540	-72 357.66	3 466 983.13		R540	-76 011.30	3 463 863.54
L541	-72 372.96	3 466 955.27		R541	-76 061.52	3 463 807.04
L542	-72 454.02	3 466 849.42		R542	-76 117.93	3 463 743.58
L543	-72 532.75	3 466 791.87		R543	-76 177.72	3 463 676.32
L544	-72 593.37	3 466 712.34		R544	-76 225.97	3 463 622.04
L545	-72 642.61	3 466 624.33		R545	-76 285.16	3 463 555.45
L546	-72 712.71	3 466 551.84		R546	-76 335.48	3 463 498.83
L547	-72 772.38	3 466 471.59		R547	-76 383.49	3 463 444.82
L548	-72 935.10	3 466 253.03		R548	-76 439.10	3 463 382.27
L549	-73 007.35	3 466 177.03		R549	-76 450.06	3 463 369.93
L550	-73 086.83	3 466 108.63		R550	-76 490.00	3 463 325.00
L551	-73 172.73	3 466 048.50		R551	-76 586.29	3 463 278.54
L552	-73 264.21	3 465 997.25		R552	-76 656.95	3 463 198.95
L553	-73 360.35	3 465 955.39		R553	-76 650.85	3 463 143.85
L554	-73 448.55	3 465 897.87		R554	-76 592.05	3 462 611.67
L555	-73 498.29	3 465 869.68		R555	-76 629.37	3 462 522.18
L556	-73 566.14	3 465 839.71		R556	-76 652.06	3 462 483.23
L557	-73 639.55	3 465 838.42		R557	-76 736.50	3 462 242.07
L558	-73 741.30	3 465 827.41		R558	-76 767.43	3 462 146.71
L559	-73 934.99	3 465 725.87		R559	-76 809.41	3 462 055.82
L560	-74 018.88	3 465 679.90		R560	-76 845.66	3 461 962.61
L561	-74 086.12	3 465 612.81		R561	-76 884.12	3 461 870.30
				Vel Sheet	28 Van of 31	P1231/22

PADRESERWE KOÖRDINATE / ROAD RESERVE CO-ORDINATES							
LINKERKANT/LEFT HAND SIDE				REGTERKANT/RIGHT HAND SIDE			
	Y	X	WG 29°		Y	X	
L562	-74 157.41	3 465 550.03		R562	-76 939.46	3 461 755.64	
L563	-74 216.26	3 465 475.38		R563	-76 970.68	3 461 709.79	
L564	-74 268.11	3 465 394.64		R564	-77 101.22	3 461 377.66	
L565	-74 368.51	3 465 222.18		R565	-77 142.26	3 461 318.08	
L566	-74 416.81	3 465 134.59		R566	-77 168.89	3 461 202.76	
L567	-74 474.53	3 464 975.11		R567	-77 200.00	3 461 107.36	
L568	-74 569.56	3 464 876.38		R568	-77 283.80	3 460 925.56	
L569	-74 634.67	3 464 744.77		R569	-77 320.96	3 460 832.66	
L570	-74 652.96	3 464 664.99		R570	-77 527.09	3 460 369.59	
L571	-74 663.45	3 464 637.74		R571	-77 744.90	3 459 873.34	
L572	-74 730.21	3 464 564.97		R572	-77 770.01	3 459 823.23	
L573	-74 762.34	3 464 523.17		R573	-77 802.28	3 459 776.64	
L574	-74 827.82	3 464 439.30		R574	-77 840.61	3 459 743.04	
L575	-74 891.59	3 464 355.68		R575	-77 861.95	3 459 741.94	
L576	-74 955.78	3 464 272.83		R576	-77 887.83	3 459 769.61	
L577	-75 050.09	3 464 150.77		R577	-77 928.88	3 459 842.39	
L578	-75 376.00	3 463 729.00		R578	-77 948.63	3 459 832.31	
L579	-75 433.39	3 463 673.91		R579	-77 925.69	3 459 784.31	
L580	-75 638.06	3 463 259.87		R580	-77 900.12	3 459 742.96	
L581	-75 930.94	3 462 922.04		R581	-77 881.66	3 459 720.52	
L582	-76 153.80	3 462 591.15		R582	-77 885.90	3 459 703.67	
L583	-76 190.17	3 462 584.86		R583	-77 913.76	3 459 669.30	
L584	-76 257.87	3 462 580.11		R584	-77 943.01	3 459 618.09	
L585	-76 302.11	3 462 573.68		R585	-77 952.71	3 459 566.73	
L586	-76 510.72	3 462 483.89		R586	-77 957.94	3 459 473.82	
L587	-76 516.11	3 462 470.54		R587	-77 949.48	3 459 424.12	
L588	-76 559.86	3 462 387.60		R588	-77 968.66	3 459 376.89	
L589	-76 598.21	3 462 294.00		R589	-78 018.03	3 459 286.14	
L590	-76 635.39	3 462 197.58		R590	-78 065.90	3 459 199.78	
L591	-76 669.29	3 462 107.01		R591	-78 119.45	3 459 116.81	
L592	-76 707.61	3 461 989.89		R592	-78 176.28	3 459 036.04	
L593	-76 739.73	3 461 891.73		R593	-78 236.29	3 458 957.62	
L594	-76 719.11	3 461 772.11		R594	-78 303.45	3 458 885.17	
L595	-76 784.85	3 461 694.62		R595	-78 370.74	3 458 813.21	
L596	-76 865.06	3 461 655.76		R596	-78 434.45	3 458 737.60	
L597	-76 870.33	3 461 623.82		R597	-78 506.19	3 458 669.73	
L598	-76 925.36	3 461 533.30		R598	-78 580.59	3 458 604.79	
L599	-76 967.25	3 461 423.97		R599	-78 691.91	3 458 516.80	
L600	-76 991.96	3 461 343.37		R600	-78 873.10	3 458 393.96	
L601	-77 038.93	3 461 254.79		R601	-79 365.66	3 458 090.99	
L602	-77 077.37	3 461 162.46		R602	-79 421.92	3 458 067.93	
L603	-77 189.58	3 460 907.55		R603	-79 536.00	3 457 986.20	
L604	-77 211.26	3 460 883.26		R604	-79 754.31	3 457 851.91	
L605	-77 288.06	3 460 708.90		R605	-79 839.85	3 457 798.57	
L606	-77 462.56	3 460 312.70		R606	-79 923.41	3 457 738.49	
L607	-77 490.13	3 460 251.93		R607	-80 000.68	3 457 670.31	
L608	-77 619.26	3 459 959.72		R608	-80 070.73	3 457 594.83	
L609	-77 634.18	3 459 907.11		R609	-80 133.98	3 457 516.09	
L610	-77 657.63	3 459 790.57		R610	-80 691.64	3 456 809.68	
L611	-77 666.76	3 459 708.99		R611	-80 755.16	3 456 732.42	
L612	-77 676.34	3 459 657.03		R612	-80 818.41	3 456 655.44	
				Vel Sheet	29 Van of	31	P1231/22

PADRESERVE KOÖRDINATE / ROAD RESERVE CO-ORDINATES						
LINKERKANT/LEFT HAND SIDE				REGTERKANT/RIGHT HAND SIDE		
	Y	X	WG 29°		Y	X
L613	-77 701.49	3 459 607.49		R613	-80 878.37	3 456 574.87
L614	-77 663.21	3 459 566.15		R614	-81 373.34	3 455 945.84
L615	-77 621.32	3 459 544.47		R615	-81 433.13	3 455 863.77
L616	-77 582.12	3 459 526.78		R616	-81 488.74	3 455 778.81
L617	-77 585.05	3 459 494.62		R617	-81 540.04	3 455 691.18
L618	-77 657.32	3 459 510.46		R618	-81 586.89	3 455 601.10
L619	-77 723.00	3 459 530.57		R619	-81 629.18	3 455 508.79
L620	-77 753.74	3 459 534.70		R620	-81 666.80	3 455 414.48
L621	-77 776.44	3 459 503.13		R621	-81 732.78	3 455 218.97
L622	-77 806.51	3 459 486.18		R622	-81 762.72	3 455 130.24
L623	-77 860.42	3 459 376.23		R623	-81 854.35	3 454 962.24
L624	-77 942.37	3 459 244.51		R624	-81 912.22	3 454 886.19
L625	-77 997.83	3 459 157.75		R625	-81 977.71	3 454 816.13
L626	-78 053.12	3 459 072.09		R626	-82 054.00	3 454 757.80
L627	-78 111.79	3 458 988.71		R627	-82 143.36	3 454 722.14
L628	-78 173.74	3 458 907.74		R628	-82 224.63	3 454 670.44
L629	-78 295.71	3 458 742.86		R629	-82 319.30	3 454 653.69
L630	-78 373.55	3 458 675.74		R630	-82 414.68	3 454 626.16
L631	-78 452.39	3 458 610.53		R631	-82 512.17	3 454 605.65
L632	-78 563.59	3 458 515.16		R632	-82 610.42	3 454 587.05
L633	-78 644.13	3 458 452.64		R633	-82 708.68	3 454 568.44
L634	-78 727.10	3 458 393.39		R634	-82 908.02	3 454 546.21
L635	-78 812.37	3 458 337.50		R635	-83 112.81	3 454 552.75
L636	-78 897.86	3 458 284.81		R636	-83 231.37	3 454 588.13
L637	-79 323.74	3 458 022.84		R637	-83 249.98	3 454 565.16
L638	-79 400.77	3 457 957.21		R638	-83 213.17	3 454 503.42
L639	-79 494.09	3 457 918.06		R639	-83 384.09	3 454 465.59
L640	-79 627.22	3 457 836.16		R640	-83 623.40	3 454 363.25
L641	-79 712.40	3 457 783.77		R641	-83 699.34	3 454 311.80
L642	-79 796.16	3 457 731.55		R642	-83 783.00	3 454 251.09
L643	-79 873.54	3 457 675.93		R643	-83 859.92	3 454 181.97
L644	-79 944.82	3 457 613.04		R644	-83 931.07	3 454 107.41
L645	-80 009.57	3 457 543.25		R645	-83 987.25	3 454 020.32
L646	-80 071.19	3 457 466.52		R646	-84 043.95	3 453 937.40
L647	-81 309.88	3 455 897.13		R647	-84 268.97	3 453 607.65
L648	-81 367.31	3 455 818.30		R648	-84 392.41	3 453 454.42
L649	-81 420.73	3 455 736.69		R649	-84 528.97	3 453 312.75
L650	-81 470.00	3 455 652.51		R650	-84 679.73	3 453 186.23
L651	-81 515.01	3 455 565.97		R651	-84 842.37	3 453 075.39
L652	-81 555.64	3 455 477.29		R652	-85 015.26	3 452 981.33
L653	-81 591.78	3 455 386.70		R653	-85 196.67	3 452 905.01
L654	-81 623.72	3 455 293.84		R654	-85 385.44	3 452 849.67
L655	-81 654.98	3 455 198.85		R655	-85 579.03	3 452 816.86
L656	-81 680.89	3 455 122.49		R656	-85 675.46	3 452 796.33
L657	-81 687.69	3 455 102.46		R657	-85 872.05	3 452 786.84
L658	-81 730.18	3 455 005.52		R658	-86 068.61	3 452 797.03
L659	-81 784.50	3 454 914.43		R659	-86 075.36	3 452 798.06
L660	-81 849.76	3 454 830.83		R660	-86 263.16	3 452 826.79
L661	-81 924.93	3 454 756.01		R661	-86 453.77	3 452 875.82
L662	-82 008.84	3 454 691.15		R662	-86 639.19	3 452 943.91
L663	-82 091.24	3 454 619.68		R663	-86 822.57	3 453 021.91
				Vel Sheet	30 Van of 31	P1231/22

PADRESERVE KOÖRDINATE / ROAD RESERVE CO-ORDINATES									
LINKERKANT/LEFT HAND SIDE					REGTERKANT/RIGHT HAND SIDE				
	Y		X	WG 29º		Y		X	
L664	-82 197.53	3	454	595.16	R664	-86 912.84	3	453	065.17
L665	-82 299.15	3	454	565.56	R665	-87 003.98	3	453	106.90
L666	-82 399.03	3	454	545.66	R666	-87 087.17	3	453	133.48
L667	-82 707.77	3	454	487.16	R667	-87 186.86	3	453	161.59
L668	-82 889.63	3	454	449.71	R668	-87 289.01	3	453	179.86
L669	-82 989.01	3	454	427.31	R669	-87 392.81	3	453	184.59
L670	-82 965.47	3	454	353.19	R670	-87 496.28	3	453	174.46
L671	-82 986.76	3	454	332.89	R671	-87 597.77	3	453	151.61
L672	-83 083.20	3	454	388.28	R672	-87 693.99	3	453	112.28
L673	-83 282.23	3	454	363.24	R673	-87 782.48	3	453	058.51
L674	-83 373.89	3	454	333.17	R674	-87 865.94	3	452	998.05
L675	-83 482.28	3	454	318.61	R675	-88 130.00	3	453	000.00
L676	-83 567.72	3	454	285.25	R676	-88 698.53	3	452	435.76
L677	-83 727.52	3	454	182.68	R677	-88 723.13	3	452	281.28
L678	-83 798.95	3	454	119.95	R678	-88 790.49	3	451	800.74
L679	-83 858.39	3	454	045.89					
L680	-83 921.76	3	453	974.37					
L681	-83 977.80	3	453	892.41					
L682	-84 146.51	3	453	644.34					
L683	-84 203.98	3	453	561.00					
L684	-84 265.78	3	453	479.30					
L685	-84 331.58	3	453	400.79					
L686	-84 401.23	3	453	325.67					
L687	-84 474.54	3	453	254.12					
L688	-84 551.34	3	453	186.33					
L689	-84 629.64	3	453	120.10					
L690	-84 708.43	3	453	053.60					
L691	-84 799.52	3	453	005.23					
L692	-84 889.23	3	452	955.60					
L693	-84 981.64	3	452	908.73					
L694	-85 073.99	3	452	867.16					
L695	-85 169.38	3	452	829.81					
L696	-85 266.51	3	452	797.28					
L697	-85 365.15	3	452	769.64					
L698	-85 465.05	3	452	746.96					
L699	-85 565.76	3	452	728.01					
L700	-85 646.83	3	452	710.38					
L701	-85 768.97	3	452	701.16					
L702	-85 872.00	3	452	700.37					
L703	-85 976.15	3	452	704.30					
L704	-86 076.73	3	452	717.44					
L705	-86 178.35	3	452	730.39					
L706	-86 268.13	3	452	746.43					
L707	-86 279.19	3	452	748.41					
L708	-86 379.01	3	452	771.44					
L709	-86 477.55	3	452	799.43					
L710	-86 574.57	3	452	832.32					
L711	-86 669.72	3	452	869.96					
L712	-86 947.33	3	452	984.09					
L713	-87 115.62	3	453	057.22					
L714	-87 205.58	3	453	083.67					
					LINKERKANT/LEFT HAND SIDE				
						Y		X	
					L715	-87 297.23	3	453	100.06
					L716	-87 390.34	3	453	104.45
					L717	-87 483.18	3	453	095.40
					L718	-87 574.22	3	453	074.81
					L719	-87 660.36	3	453	039.10
					L720	-87 739.63	3	452	990.77
					L721	-87 814.61	3	452	936.45
					L722	-88 250.00	3	452	470.00
					L723	-88 254.74	3	451	835.71