

DEPARTMENT OF TRANSPORT**NO. 4056****10 November 2023****DECLARATION AMENDMENT OF NATIONAL ROAD R730 SECTION 3**

AMENDMENT OF DECLARATION No. 350 OF 2016

By virtue of section 40(1)(b) of The South African National Roads Agency Limited and National Roads Act 1998 (Act No. 7 of 1998), I hereby amend Declaration No. 350 of 2016 by substituting it in its entirety with the accompanying sheets 1 to 9 of Plan No. P1233/23.

(National Road R730 Section 3: Thabong Interchange – R34 Junction (Odendaalsrus))
MINISTER OF TRANSPORT

DEPARTEMENT VAN VERVOER

NO. 4056

10 November 2023

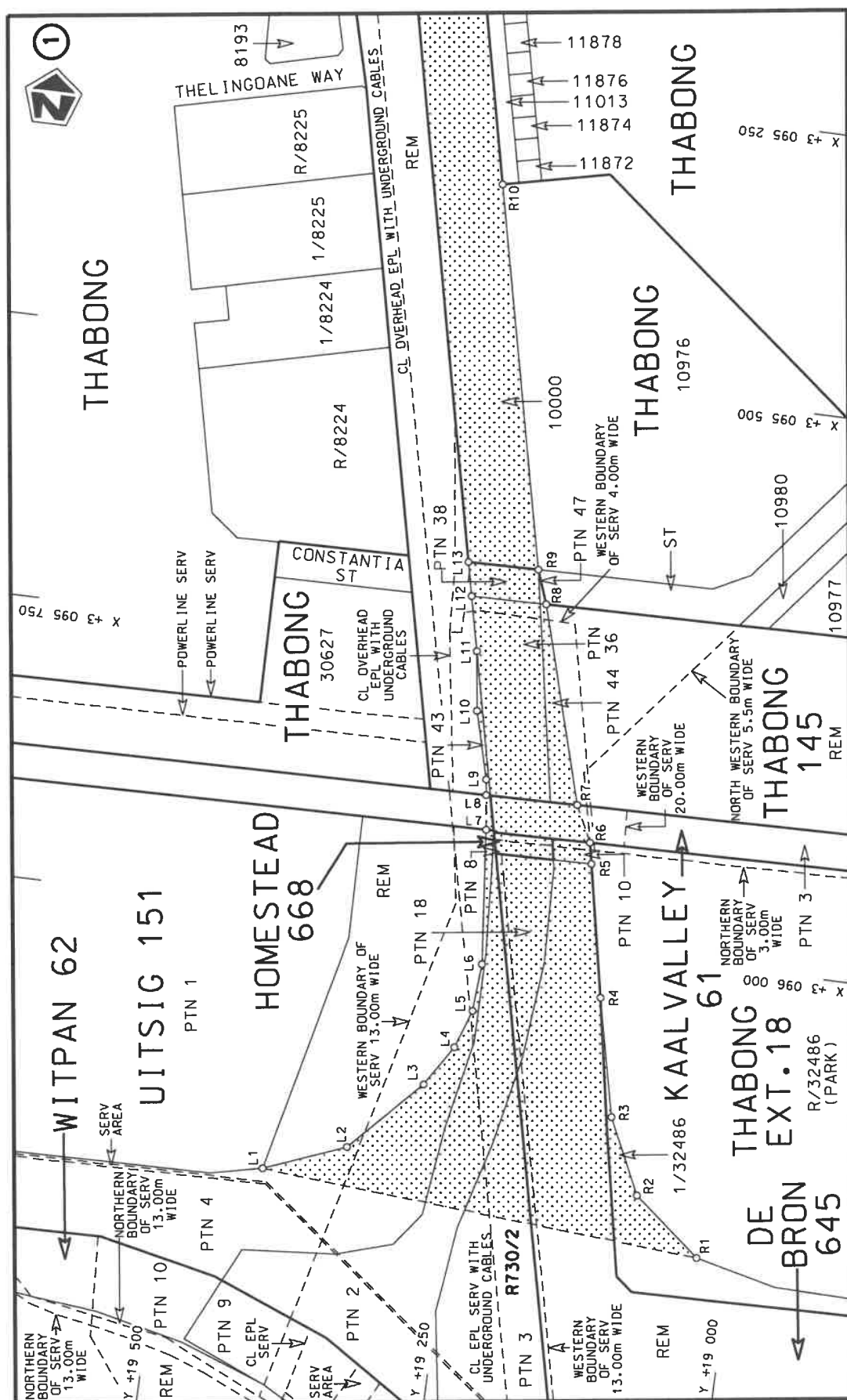
VERKLARING WYSIGING VAN NASIONALE PAD R730 SEKSIE 3


WYSIGING VAN VERKLARING No. 350 VAN 2016

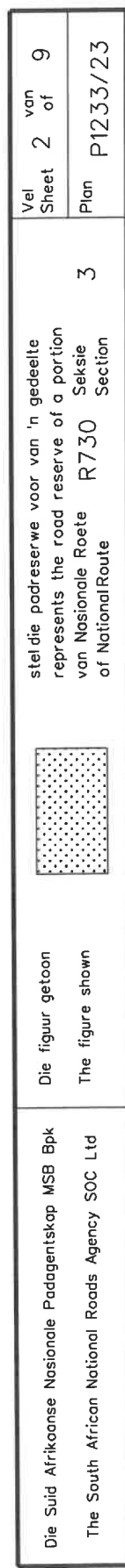
Kragtens Artikel 40(1)(b) van die Suid Afrikaanse Nasionale Padagentskap Beperk en Nasionale Paaie Wet 1998 (Wet No.7 van 1998), wysig ek hiermee Verklaring No. 350 van 2016 deur dit in sy geheel te vervang met bygaande velle 1 tot 9 van Plan No. P1233/23.

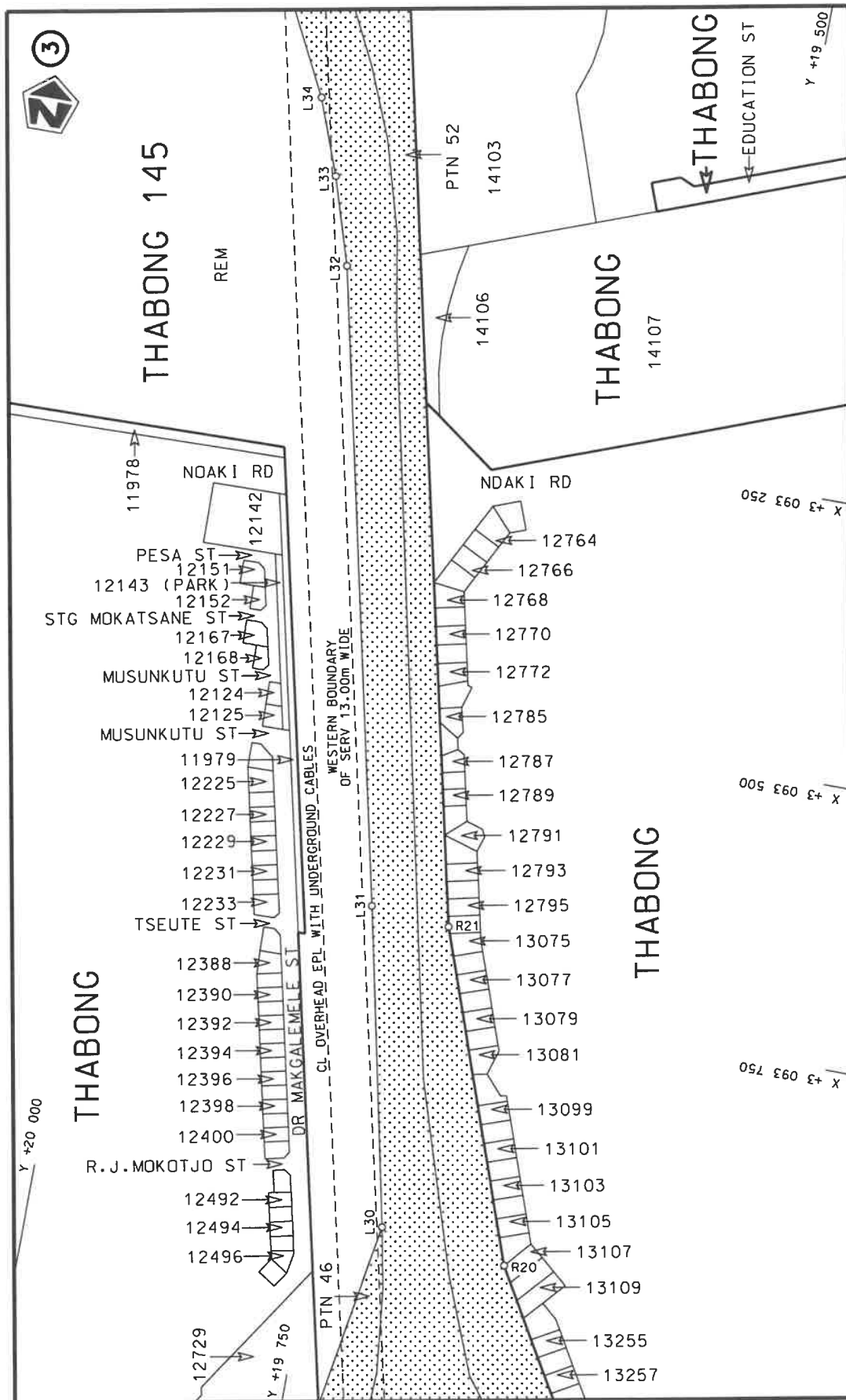
(Nasionale Pad R730 Seksie 3: Thabong Interseksie – R34 Aansluiting (Odendaalsrus))


MINISTER VAN VERVOER

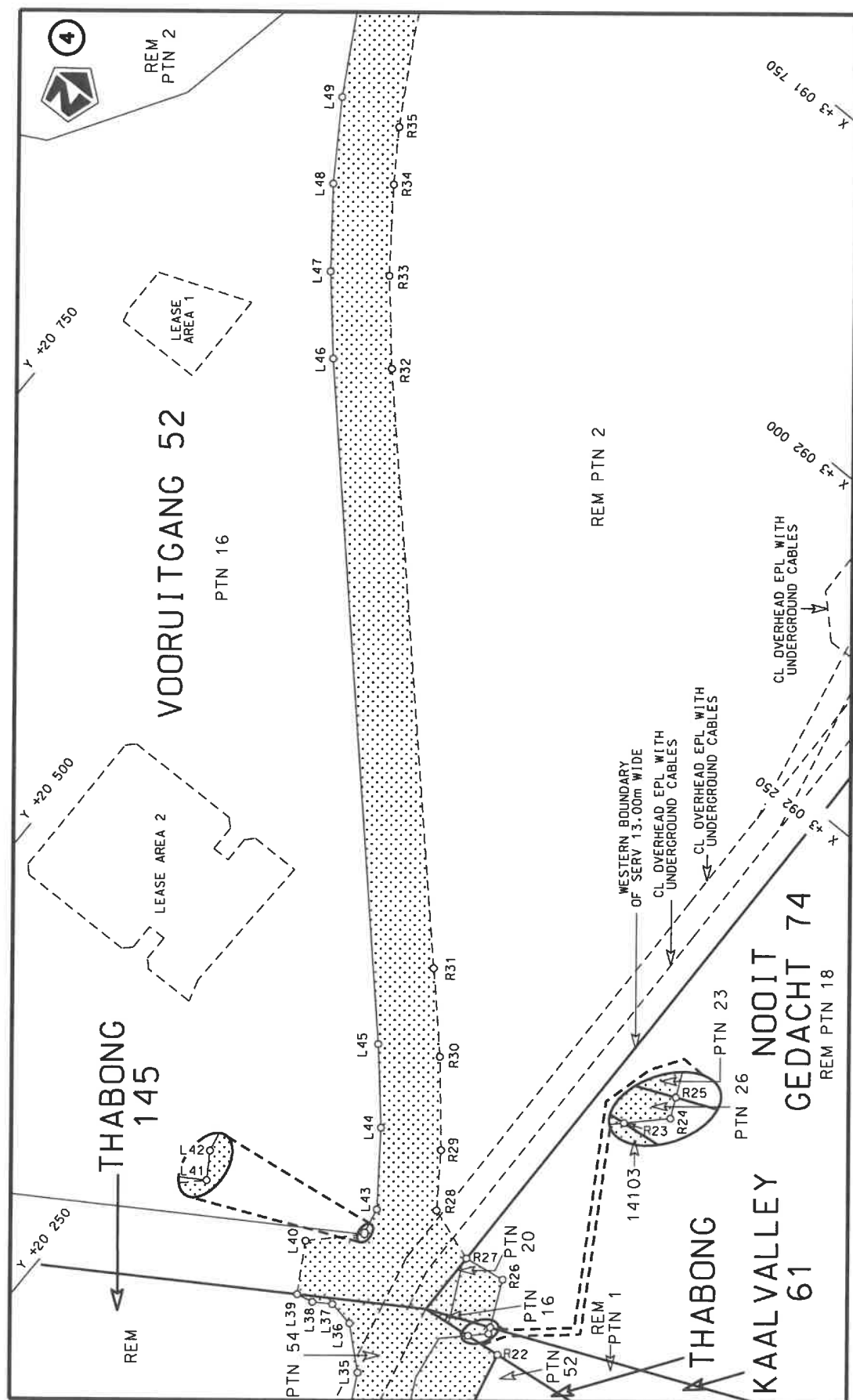


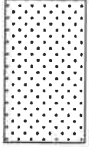
Die Suid Afrikaanse Nasionale Padogenskap MSB Bpk The South African National Roads Agency SOC Ltd	Die figuur getoon The figure shown		steldie padreserwe voor van 'n gedeelte represents the road reserve of a portion van Nasionale Roete R730 Sektie of National Route Section	Vel Sheet 1 of 9
			3	Plan P1233/23

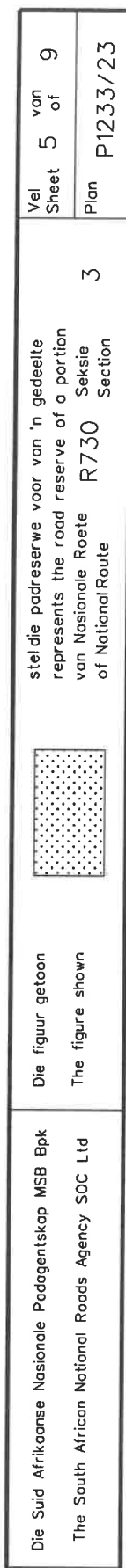




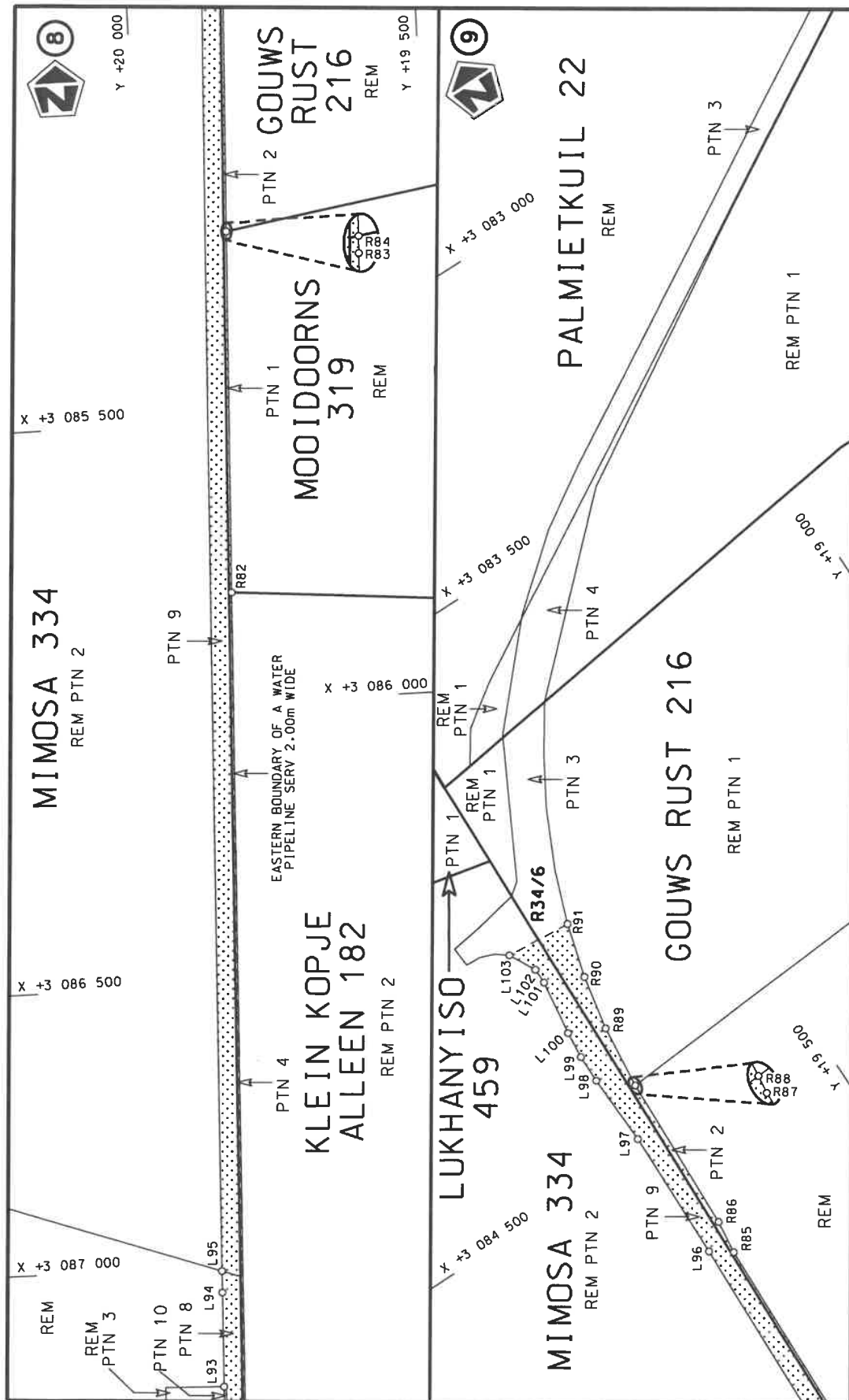
Vel Sheet 3 of 9	steldie padreserwe voor van 'n gedeelte represents the road reserve of a portion van Nasionale Roete R730 Sektie of National Route Section	Die Suid Afrikaanse Nasionale Padagentskop MSB Bpk The South African National Roads Agency SOC Ltd
Plan P1233/23	3	The figure shown



Die Suid Afrikaanse Nasionale Padagentskap MSB Bpk The South African National Roads Agency SOC Ltd	Die figuur getoon The figure shown	 steldie podreserwe voor van 'n gedeelte represents the road reserve of a portion van Nasionale Roete R730 Sektie of National Route Section	Vel Sheet 4 of 9 Plan P1233/23
---	---------------------------------------	--	--------------------------------------

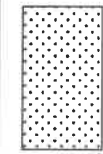






Die Suid Afrikaanse Nasionale Padagentskap MSB Bpk
The South African National Roads Agency SOC Ltd

Die figuur getoon
The figure shown



stelt die padreserwe voor van 'n gedeelte
represents the road reserve of a portion
van Nasionale Roete R730 Seksie
of National Route R730 Section

Vel
Sheet 7 of 9
Plan P1233/23

PADRESERWE KOÖRDINATE / ROAD RESERVE CO-ORDINATES									
LINKERKANT/LEFT HAND SIDE					REGTERKANT/RIGHT HAND SIDE				
	Y	X	WG 27°			Y	X		
L1	19 417.54	3 096 230.23		R1	19 029.82	3 096 260.75			
L2	19 346.65	3 096 201.86		R2	19 089.27	3 096 212.15			
L3	19 287.03	3 096 137.71		R3	19 120.58	3 096 145.56			
L4	19 264.48	3 096 101.31		R4	19 144.00	3 096 041.08			
L5	19 252.78	3 096 067.00		R5	19 167.39	3 095 923.53			
L6	19 250.14	3 096 024.55		R6	19 171.11	3 095 904.84			
L7	19 262.13	3 095 904.94		R7	19 186.44	3 095 872.93			
L8	19 266.08	3 095 874.31		R8	19 236.46	3 095 698.68			
L9	19 267.87	3 095 860.48		R9	19 247.24	3 095 668.85			
L10	19 283.79	3 095 800.75		R10	19 323.24	3 095 332.05			
L11	19 290.89	3 095 747.94		R11	19 360.09	3 095 169.17			
L12	19 301.76	3 095 699.80		R12	19 387.07	3 095 050.05			
L13	19 308.52	3 095 669.91		R13	19 496.82	3 094 565.55			
L14	19 555.34	3 094 578.79		R14	19 254.74	3 094 510.82			
L15	19 613.39	3 094 584.13		R15	19 260.26	3 094 486.40			
L16	19 625.16	3 094 585.21		R16	19 264.19	3 094 470.02			
L17	19 631.25	3 094 580.44		R17	19 312.06	3 094 439.82			
L18	19 723.66	3 094 582.24		R18	19 346.25	3 094 288.63			
L19	19 734.52	3 094 579.66		R19	19 483.94	3 094 137.82			
L20	19 775.61	3 094 579.94		R20	19 579.93	3 093 971.52			
L21	19 790.19	3 094 580.80		R21	19 681.89	3 093 682.98			
L22	19 831.32	3 094 583.21		R22	19 879.69	3 092 808.56			
L23	19 832.32	3 094 566.17		R23	19 910.62	3 092 811.68			
L24	19 832.72	3 094 559.29		R24	19 897.60	3 092 798.94			
L25	19 802.31	3 094 556.02		R25	19 900.03	3 092 793.58			
L26	19 792.13	3 094 548.90		R26	19 918.24	3 092 753.41			
L27	19 773.46	3 094 535.82		R27	19 954.95	3 092 758.69			
L28	19 775.82	3 094 400.84		R28	20 002.45	3 092 741.43			
L29	19 717.78	3 094 123.18		R29	20 033.19	3 092 697.07			
L30	19 691.38	3 093 956.91		R30	20 086.33	3 092 632.68			
L31	19 751.48	3 093 676.67		R31	20 140.20	3 092 574.49			
L32	19 875.71	3 093 119.90		R32	20 504.58	3 092 181.27			
L33	19 899.92	3 093 043.11		R33	20 558.38	3 092 118.16			
L34	19 924.80	3 092 976.51		R34	20 606.68	3 092 052.50			
L35	19 965.09	3 092 897.77		R35	20 635.19	3 092 009.72			
L36	19 998.24	3 092 867.90		R36	20 676.07	3 091 938.93			
L37	20 020.65	3 092 863.99		R37	20 712.71	3 091 866.94			
L38	20 035.55	3 092 873.36		R38	20 827.25	3 091 600.39			
L39	20 050.22	3 092 876.34		R39	20 842.21	3 091 540.25			
L40	20 074.65	3 092 834.10		R40	20 835.60	3 091 530.31			
L41	20 038.00	3 092 797.82		R41	20 786.58	3 091 520.75			
L42	20 038.95	3 092 796.33		R42	20 789.18	3 091 480.63			
L43	20 043.48	3 092 773.66		R43	20 819.19	3 091 480.40			
L44	20 086.55	3 092 714.51		R44	20 847.85	3 091 465.98			
L45	20 135.25	3 092 657.79		R45	20 885.39	3 091 429.45			
L46	20 550.42	3 092 206.18		R46	20 923.98	3 091 339.00			
L47	20 601.08	3 092 147.10		R47	20 957.67	3 091 248.03			
L48	20 648.55	3 092 084.80		R48	20 972.32	3 091 151.05			
L49	20 691.10	3 092 019.96		R49	20 973.56	3 091 053.26			
L50	20 729.92	3 091 951.34		R50	20 959.63	3 090 973.36			
L51	20 764.08	3 091 879.21		R51	20 959.33	3 090 972.40			
					Vel	8	Van	9	P1233/23
					Sheet		of		

PADRESERWE KOÖRDINATE / ROAD RESERVE CO-ORDINATES									
LINKERKANT/LEFT HAND SIDE					REGTERKANT/RIGHT HAND SIDE				
	Y	X	WG 27°		Y	X			
L52	20 885.57	3 091 589.12		R52	20 928.45	3 090 873.30			
L53	20 898.09	3 091 567.21		R53	20 883.04	3 090 727.53			
L54	20 962.08	3 091 523.70		R54	20 874.52	3 090 706.01			
L55	21 013.44	3 091 517.57		R55	20 814.06	3 090 572.23			
L56	21 065.40	3 091 520.98		R56	20 788.08	3 090 516.23			
L57	21 091.11	3 091 513.35		R57	20 657.54	3 090 221.56			
L58	21 163.62	3 091 481.26		R58	20 608.37	3 090 091.84			
L59	21 188.18	3 091 478.87		R59	20 575.85	3 089 993.04			
L60	21 210.09	3 091 489.78		R60	20 511.65	3 089 764.19			
L61	21 253.23	3 091 476.37		R61	20 380.64	3 089 293.71			
L62	21 287.57	3 091 465.70		R62	20 335.38	3 089 263.92			
L63	21 017.47	3 090 867.59		R63	20 301.65	3 089 267.82			
L64	20 848.11	3 090 491.94		R64	20 290.83	3 089 202.30			
L65	20 765.07	3 090 308.12		R65	20 307.51	3 089 198.58			
L66	20 717.84	3 090 197.06		R66	20 343.66	3 089 154.09			
L67	20 676.24	3 090 085.97		R67	20 284.62	3 088 939.53			
L68	20 638.00	3 089 973.70		R68	20 259.22	3 088 844.92			
L69	20 602.19	3 089 851.03		R69	20 241.27	3 088 778.05			
L70	20 441.75	3 089 264.98		R70	20 238.48	3 088 765.32			
L71	20 453.01	3 089 242.28		R71	20 235.38	3 088 751.17			
L72	20 465.94	3 089 240.07		R72	20 153.01	3 088 452.80			
L73	20 454.22	3 089 179.20		R73	20 143.67	3 088 419.49			
L74	20 419.47	3 089 183.17		R74	20 082.17	3 088 200.25			
L75	20 346.93	3 088 916.30		R75	20 056.30	3 088 104.64			
L76	20 355.48	3 088 912.74		R76	19 983.30	3 087 834.87			
L77	20 329.02	3 088 792.32		R77	19 974.27	3 087 788.02			
L78	20 328.71	3 088 790.72		R78	19 960.39	3 087 715.98			
L79	20 307.72	3 088 683.49		R79	19 945.35	3 087 598.11			
L80	20 307.62	3 088 682.98		R80	19 945.09	3 087 596.06			
L81	20 285.84	3 088 693.55		R81	19 936.08	3 087 474.44			
L82	20 252.26	3 088 582.51		R82	19 872.93	3 085 803.77			
L83	20 181.38	3 088 384.04		R83	19 848.70	3 085 162.59			
L84	20 127.52	3 088 233.32		R84	19 848.68	3 085 162.12			
L85	20 087.78	3 088 081.52		R85	19 832.67	3 084 737.14			
L86	20 087.52	3 088 080.59		R86	19 825.32	3 084 677.21			
L87	20 018.64	3 087 827.01		R87	19 813.97	3 084 393.74			
L88	20 007.05	3 087 767.18		R88	19 813.94	3 084 393.51			
L89	19 980.87	3 087 592.92		R89	19 801.31	3 084 280.24			
L90	19 972.29	3 087 476.85		R90	19 781.95	3 084 183.39			
L91	19 969.62	3 087 403.94		R91	19 754.78	3 084 088.32			
L92	19 964.16	3 087 254.81							
L93	19 962.70	3 087 214.84							
L94	19 956.55	3 087 046.88							
L95	19 955.11	3 087 008.71							
L96	19 868.37	3 084 711.75							
L97	19 862.53	3 084 475.75							
L98	19 866.10	3 084 349.13							
L99	19 865.40	3 084 299.14							
L100	19 860.60	3 084 251.20							
L101	19 846.47	3 084 152.86							
L102	19 846.38	3 084 125.55							
					LINKERKANT/LEFT HAND SIDE				