
GOVERNMENT NOTICES • GOEWERMENTSKENNISGEWINGS

DEPARTMENT OF TRANSPORT**NO. 4055****10 November 2023****DECLARATION AMENDMENT OF NATIONAL ROAD R23 SECTION 1 AND DECLARATION OF EXISTING ROAD THROUGH THE TOWNS OF VOLKSRUST AND STANDERTON AS PART OF NATIONAL ROAD R23 SECTION 1**

- i) By virtue of Section 40 (1)(a) of The South African National Road Agency Limited and National Roads Act 1998 (Act No. 7 of 1998), I hereby declare the section of the road, commencing from its junction with National Road N11 Section 5 in Volksrust, and from there following the streets known as Adelaide Tambo Street and Govan Mbeki Drive at the time of declaration, up to points L1 and R1 on sheet 1 of Plan No. P700/08 of Declaration No. 1349 of 2008, as a National Road.
- ii) By virtue of Section 40 (1)(a) of The South African National Road Agency Limited and National Roads Act 1998 (Act No. 7 of 1998), I hereby declare the section of the road, commencing from the intersection with streets known as Dr Nelson Mandela Road and Leask Street, at time of declaration, from there continuing in a general north westerly direction along the street known as Dr Nelson Mandela Road and Handel Street at time of declaration, and therefrom continuing in a general northern direction along the street known as Walter Sisulu Drive at time of declaration up to the junction with National Road R23 Section 2, also known as the intersection between the streets known as Walter Sisulu Drive and Krogh Street at time of declaration, in Standerton, as a National Road.
- iii) By virtue of section 40(1)(b) of the South African National Road's Agency Limited and the National Roads Act 1998 (Act No. 7 of 1998), I hereby amend Declaration No. 1349 of 2008 by substituting it in its entirety with the accompanying sheets 1 to 23 of Plan No. P1194/20.

(National Road R23 Section 1: Volksrust – Standerton)**MINISTER OF TRANSPORT**

DEPARTEMENT VAN VERVOER

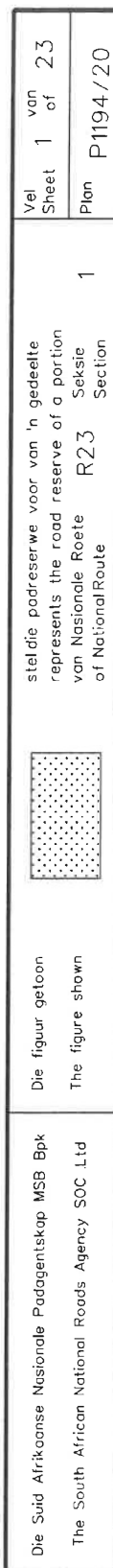
NO. 4055

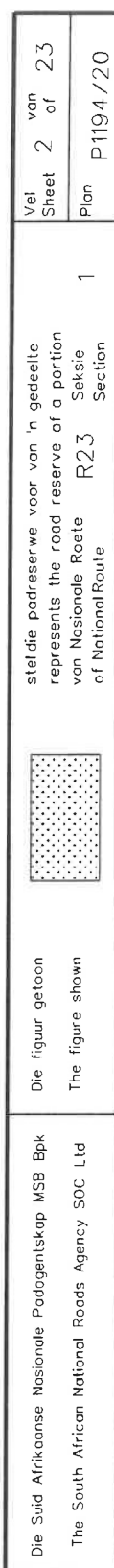
10 November 2023

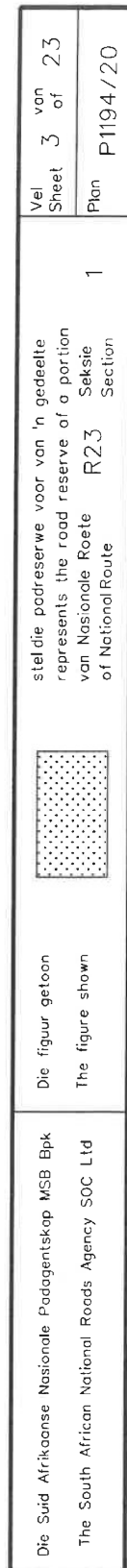
**VERKLARING WYSIGING VAN NASIONALE PAD R23 SEKSIE 1 EN VERKLARING VAN
BESTAANDE PAD DEUR DIE DORPSGEBIED VAN VOLKSRUST EN STANDERTONAS DEEL VAN
NASIONALE PAD R23 SEKSIE 1**

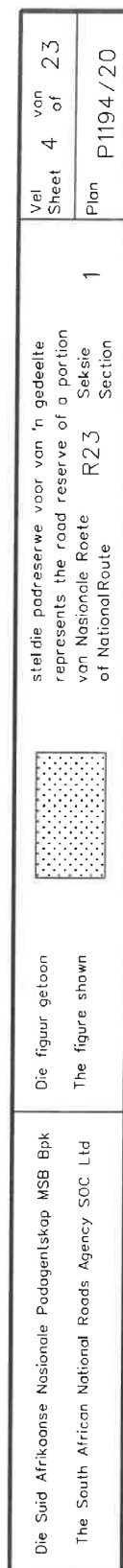
- i) Kragtens Artikel 40(1)(a) van die Suid-Afrikaanse Nasionale Padagentskap Beperk en Nasionale Paaie Wet 1998 (Wet No. 7 van 1998), verklaar ek hiermee die gedeelte van die pad, beginnende vanaf die aansluiting met Nasionale Pad N11 Seksie 5 in Volksrust, en daarvaandaan volg die strate bekend as Adelaide Tambo straat en Govan Mbeki Rylaan tydens datum van verklaring, tot by punte L1 en R1 op vel 1 van Plan No. P700/08 van Verklaring No. 1349 van 2008, as 'n Nasionale Pad.
- ii) Kragtens Artikel 40(1)(a) van die Suid-Afrikaanse Nasionale Padagentskap Beperk en Nasionale Paaie Wet 1998 (Wet No. 7 van 1998), verklaar ek hiermee die gedeelte van die pad, beginnende vanaf die interseksie met strate bekend as Dr Neslon Mandelapad en Leaskstraat, daarvandaan in 'n algemene noord westelike rigting langs die strate bekend as Dr Nelson Mandelapad en Handelstraat tydens datum van verklaring, en daarvandaan verder in 'n algemene noordelike rigting langs die straat bekend as Walter Sisuluweg tydens datum van verklaring tot by die aansluiting met Nasionale Pad R23 Seksie 2, ook bekend as die kruising tussen strate bekend as Walter Sisuluweg en Kroghstraat tydens datum van verklaring, tot 'n Nasionale Pad.
- iii) Kragtens Artikel 40(1)(b) van die Suid-Afrikaanse Nasionale Padagentskap Beperk en Nasionale Paaie Wet 1998 (Wet No. 7 van 1998), wysig ek hiermee Verklaring No. 1349 van 2008 deur dit in sy geheel te vervang met bygaande velle 1 tot 23 van Plan No. P1194/20.

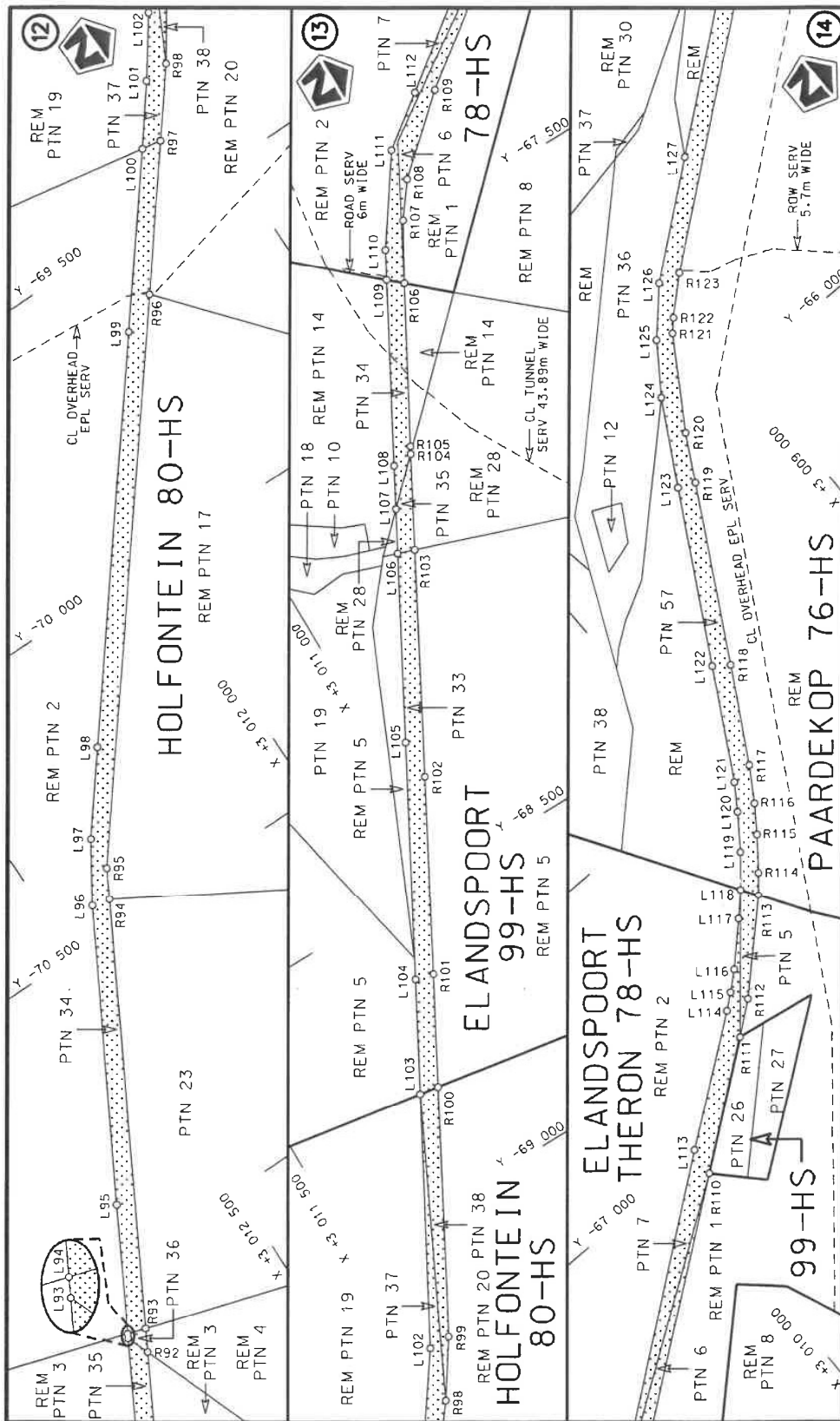
(Nasionale Pad R23 Seksie 1: Volksrust – Standerton)
MINISTER VAN VERVOER



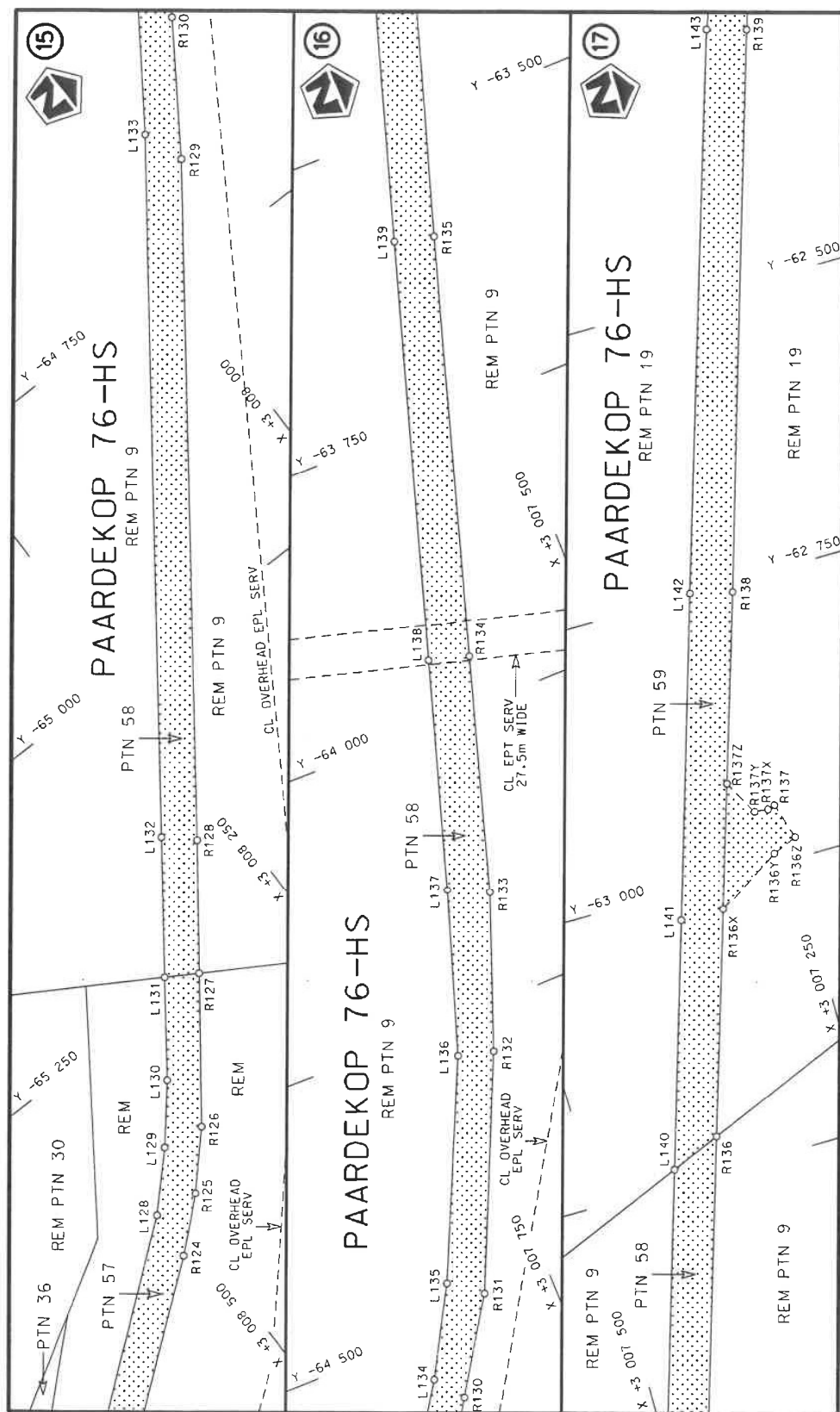





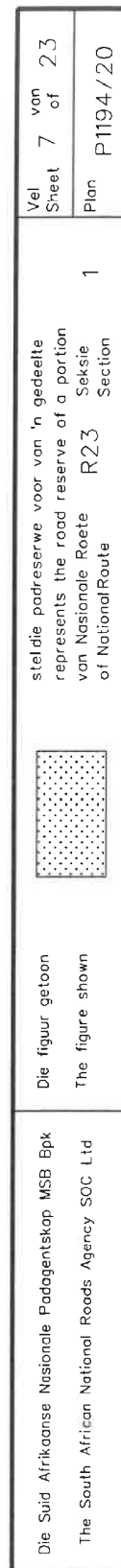


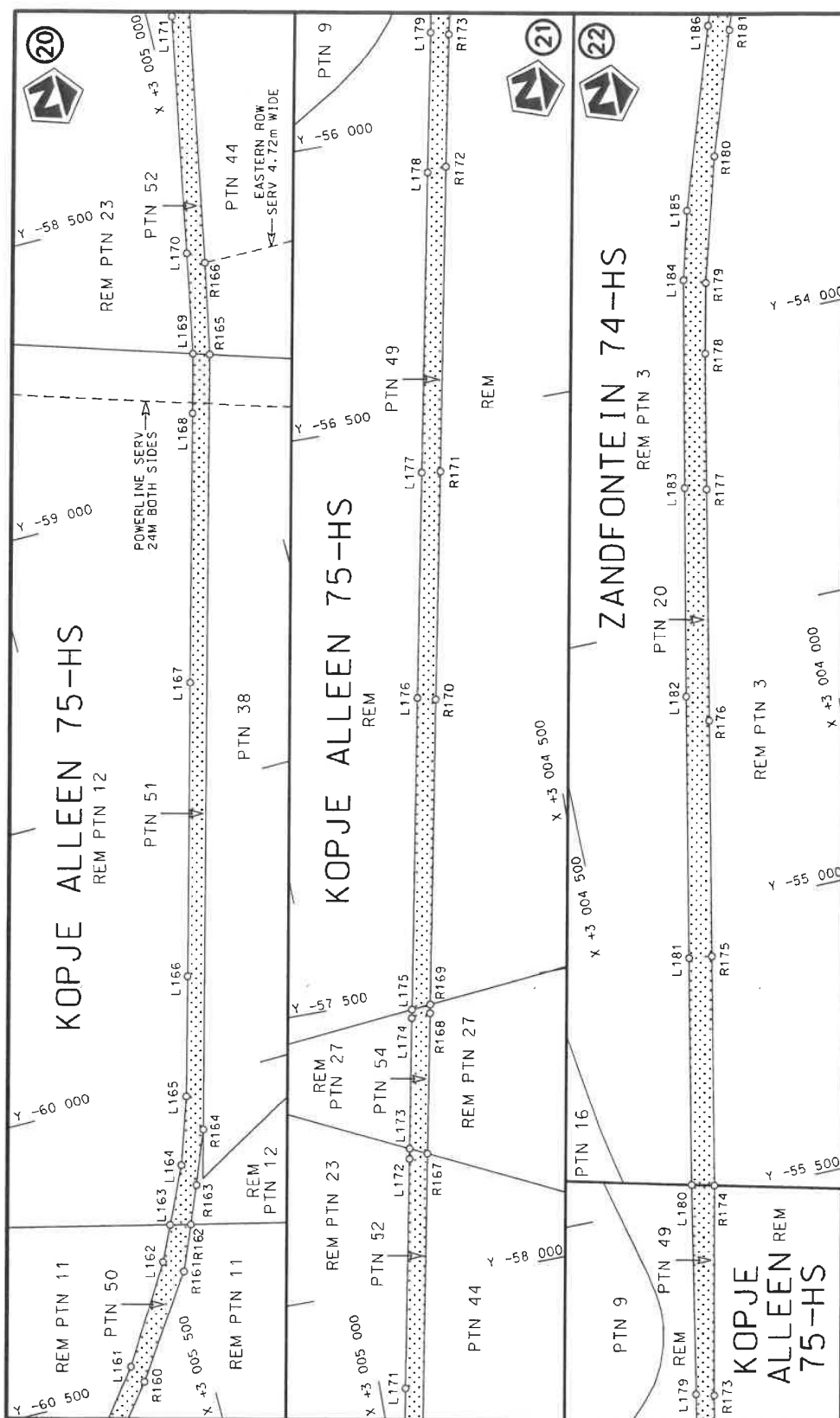



Die Suid Afrikaanse Nasionale Padagentskap MSB Bpk The South African National Roads Agency SOC Ltd	Die figuur getoon The figure shown	stelsel die padreserwe voor van 'n gedeelte represents the road reserve of a portion van Nasionale Roete R23 Seksie of National Route Section	Vel Sheet 5 of 23 Plan P1194/20
---	---------------------------------------	--	---------------------------------------

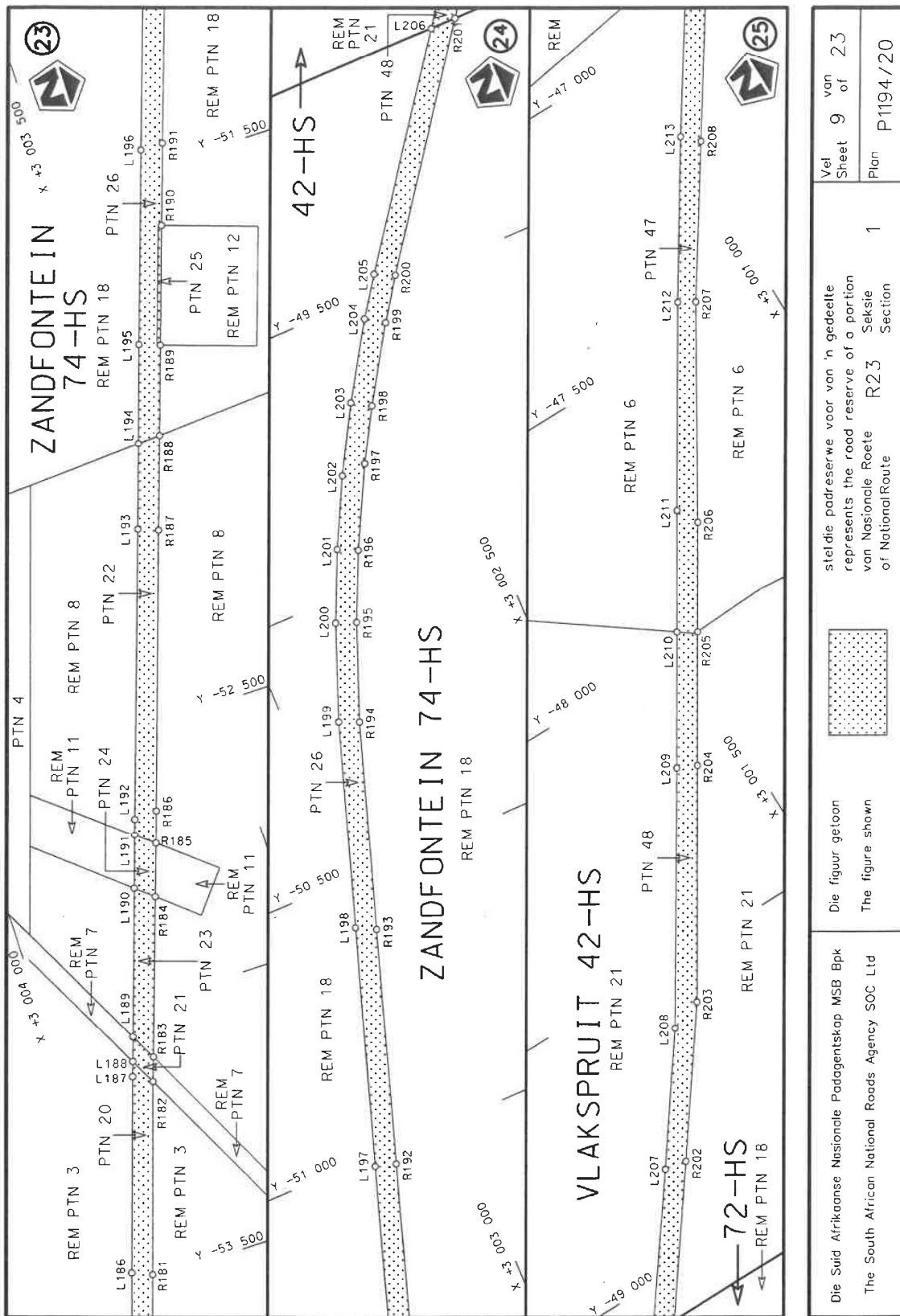


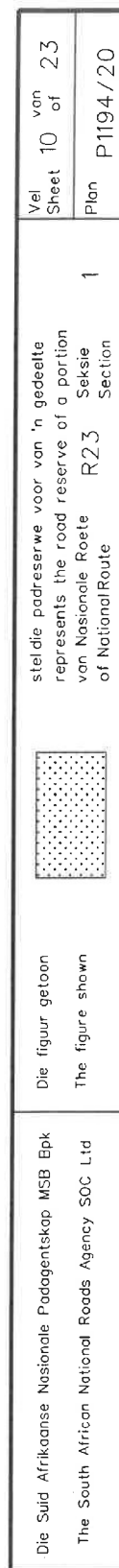
Die Suid Afrikaanse Nasionale Padagentskop MSB Bpk The South African National Roads Agency SOC Ltd	Die figuur getoon The figure shown	 steldie padreserwe voor van 'n gedeelte represents the road reserve of a portion van Nasionale Roete R23 of National Route R23	Vel Sheet 6 of 23 Plan P1194/20
---	---------------------------------------	--	---------------------------------------

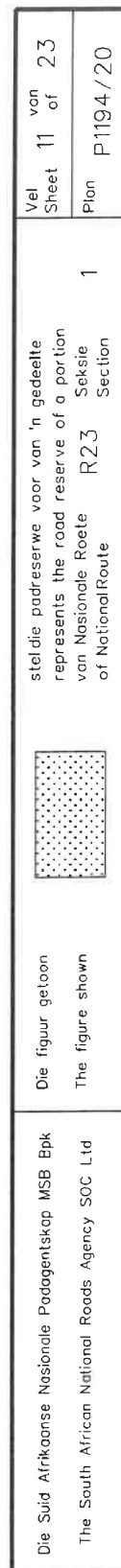


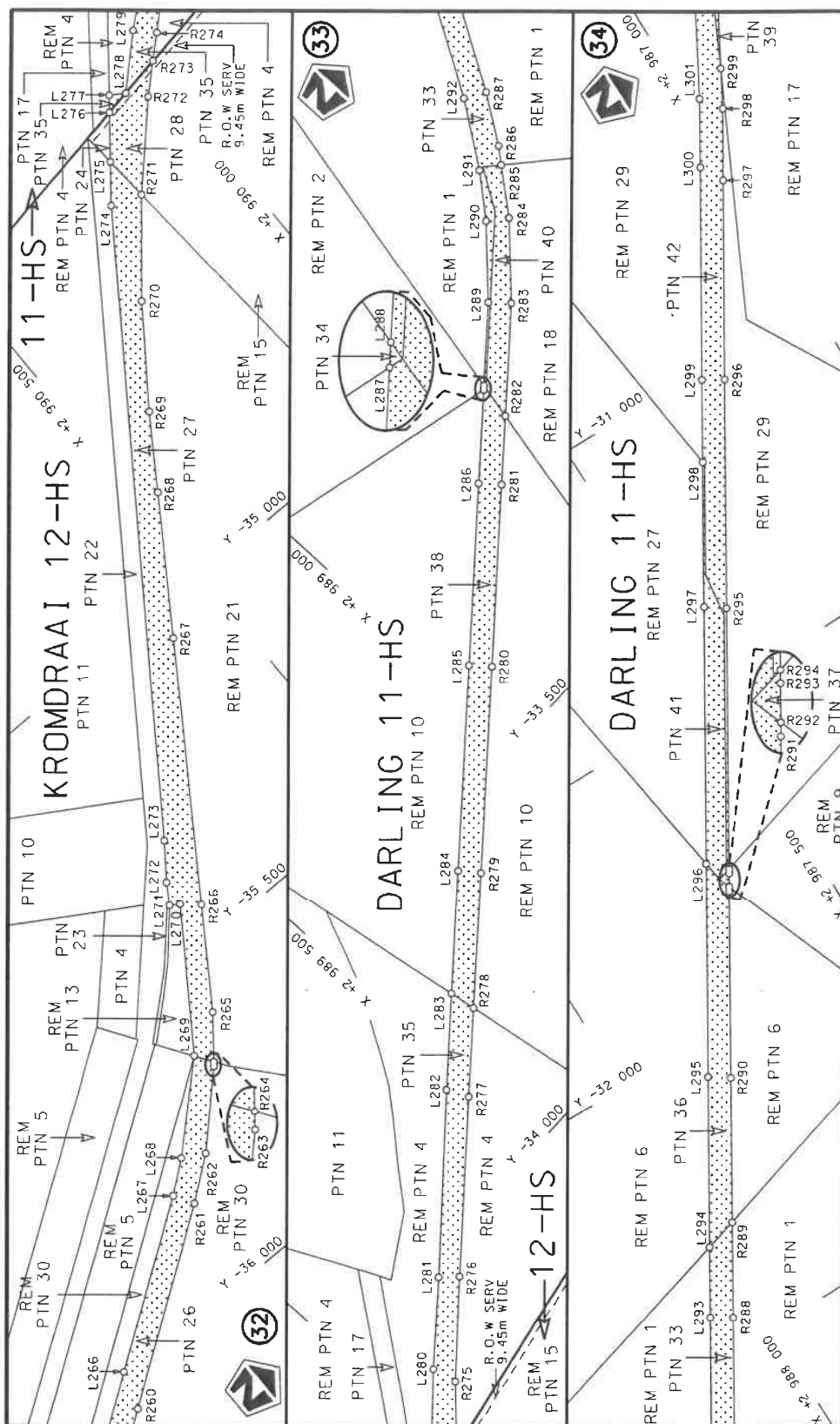


Die Suid Afrikaanse Nasionale Padagentskap MSB Bpk The South African National Roads Agency SOC Ltd	Die figuur getoon The figure shown		steldie padreserwe voor van 'n gedeelte represents the road reserve of a portion van Nasionale Roete R23 of National Route	Vel Sheet 8 of 23 Plan P1194/20
---	---------------------------------------	---	---	---------------------------------------









Vel
Sheet 12 of 23
Plan P1194/20

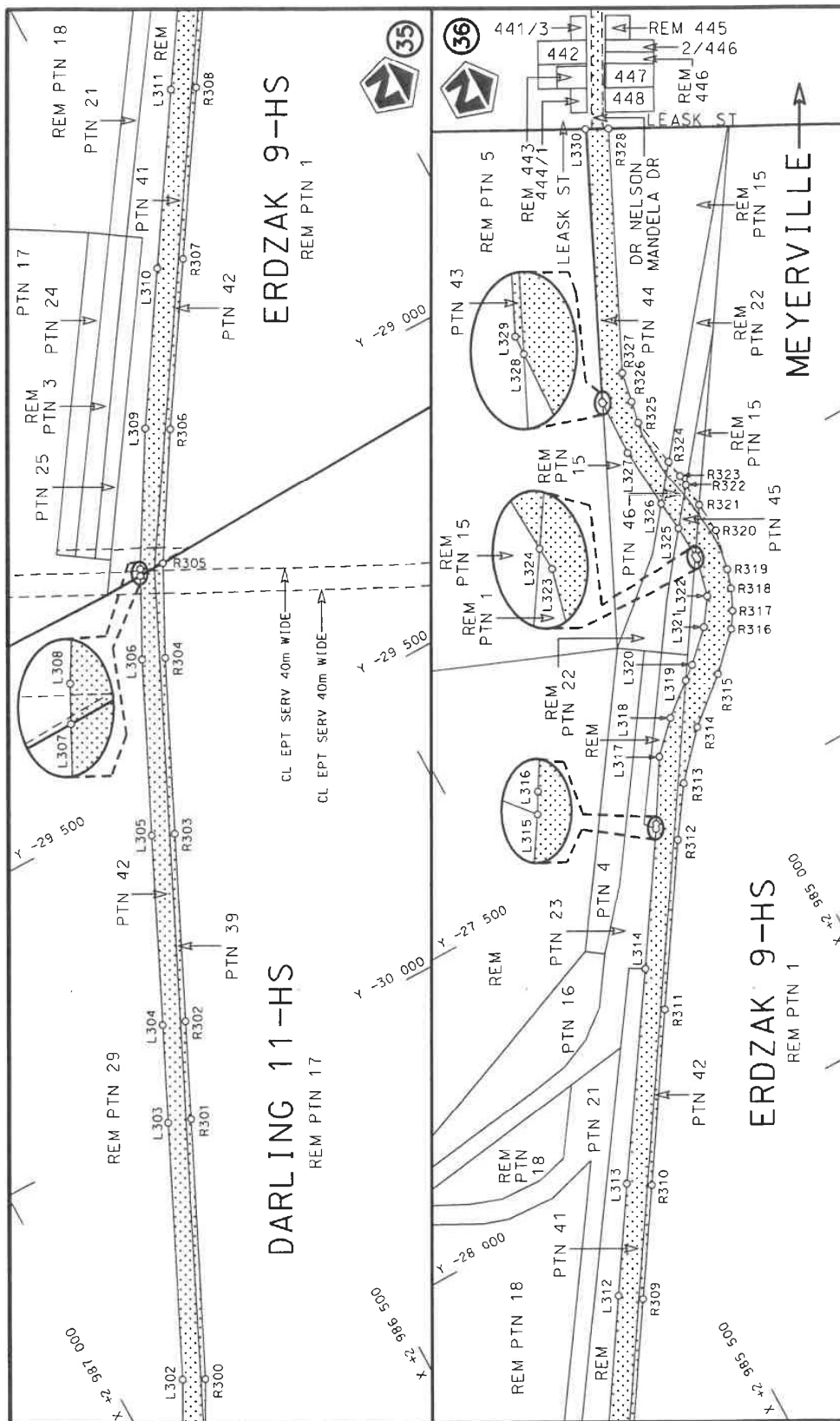
1

stelt die padreserwe voor van 'n gedeelte
represents the road reserve of a portion
von Nasionale Roete R23
of National Route

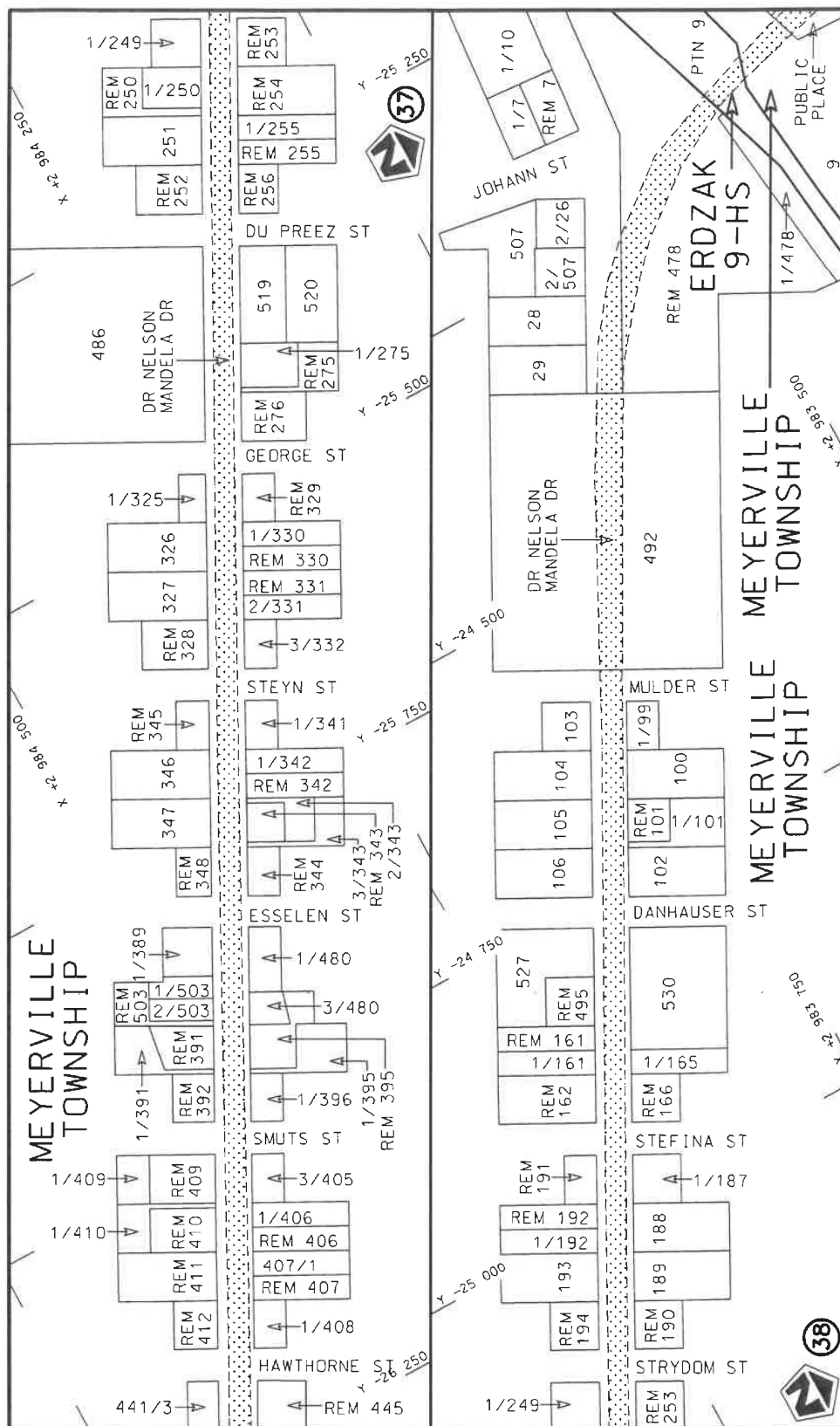



Die figuur getoon
The figure shown

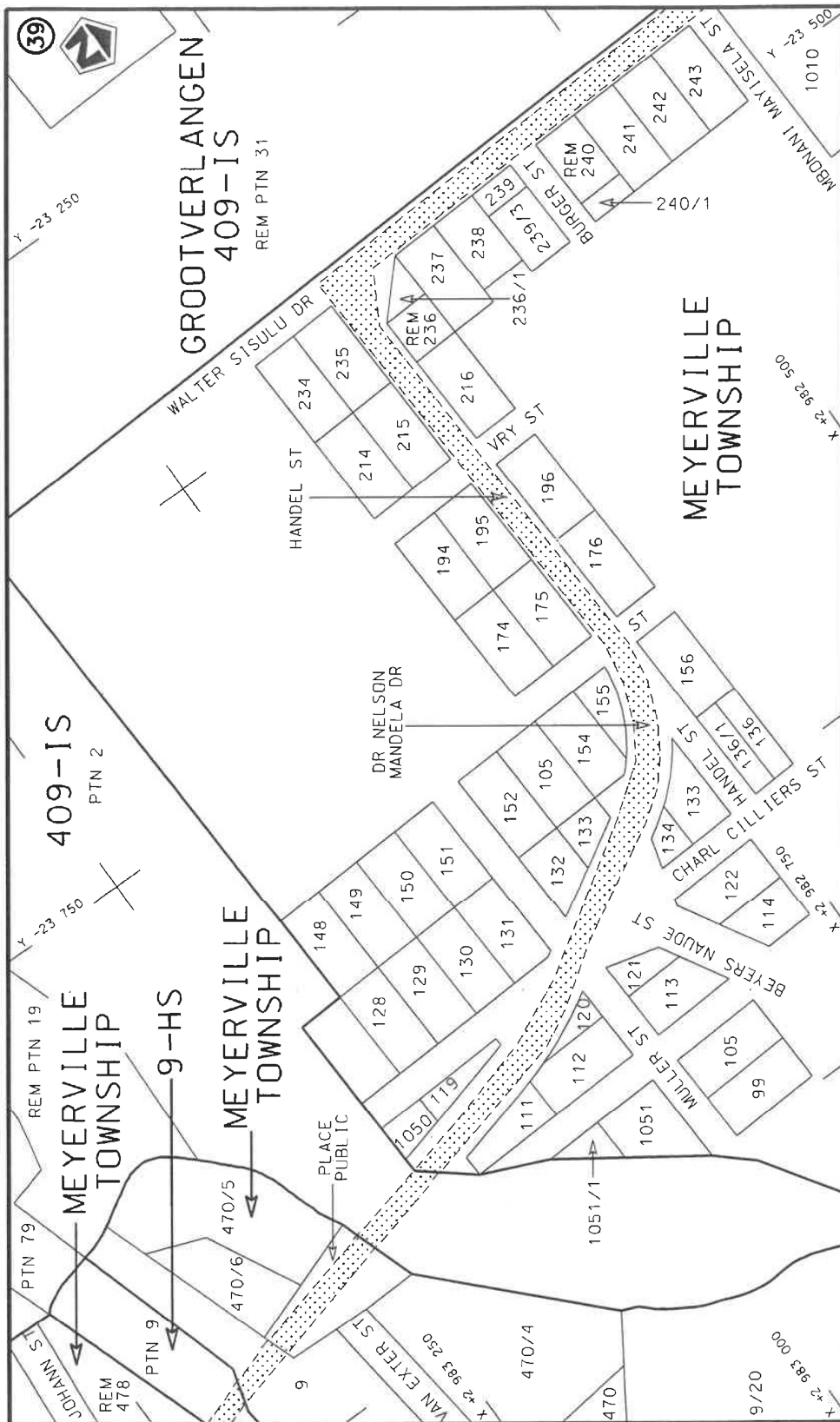
Die Suid Afrikaanse Nasionale Padagentskap MSB Bpk
The South African National Roads Agency SOC Ltd




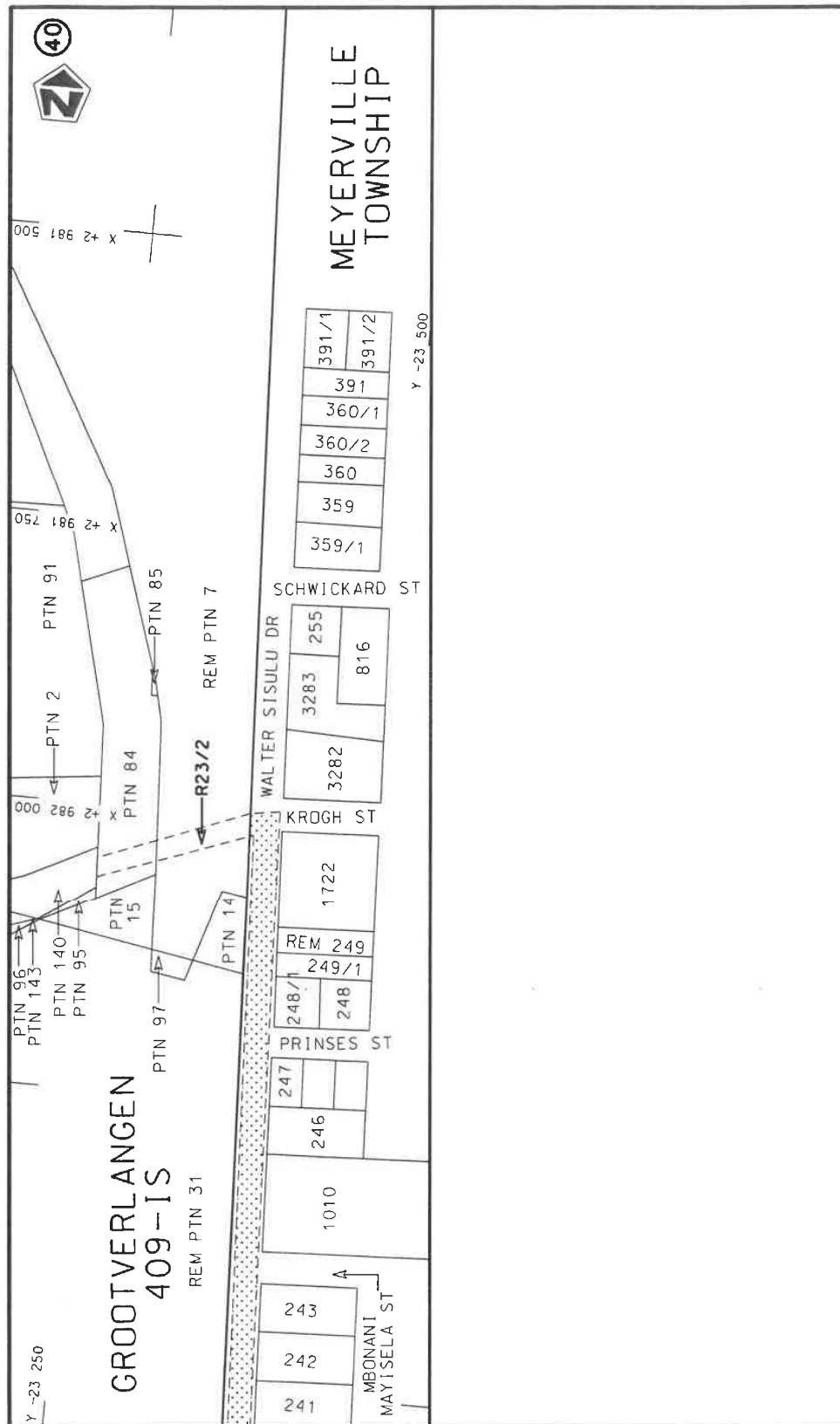
Die Suid Afrikaanse Nasionale Padagentskap MSB Bpk The South African National Roads Agency SOC Ltd	Die figuur getoon The figure shown	stelde padreserwe voor van 'n gedeelte represents the road reserve of a portion van Nasionale Roete of National Route	Vel Sheet 13 of 23 Plan P1194/20
---	---------------------------------------	--	--




Die Suid-Afrikaanse Nasionale Padagentskap MSB Bpk	Die figuur getoon		stel die padreserwe voor van 'n gedeelte represents the road reserve of a portion	Vel Sheet	14 of	23
The South African National Roads Agency SOC Ltd	The figure shown		van Nasionale Roete of National Route	1	Plan	P1194/20



Die Suid Afrikaanse Nasionale Padagentskap MSB Bpk The South African National Roads Agency SOC Ltd	Die figuur getoon The figure shown	 stiel die padreserwe voor van 'n gedeelte represents the road reserve of a portion van Nasionale Roete of National Route	Vel Sheet 15 of 23 Plan P1194/20
---	---------------------------------------	--	--



Die Suid Afrikaanse Nasionale Padagentskap MSB Bpk The South African National Roads Agency SOC Ltd	Die figuur getoon The figure shown	 steldie padreserwe voor van 'n gedeelte represents the road reserve of a portion van Nasionale Roete R23 Seksie of National Route 1 Section	Vel Sheet 16 of 23 Plan P1194/20
---	---------------------------------------	---	--

PADRESERWE KOÖRDINATE / ROAD RESERVE CO-ORDINATES									
LINKERKANT/LEFT HAND SIDE					REGTERKANT/RIGHT HAND SIDE				
	Y		X	WG 29 ^a		Y		X	
L1	-86 618.33	3	027	767.49	R1	-86 646.26	3	027	787.28
L2	-86 622.31	3	027	723.28	R2	-86 655.23	3	027	663.59
L3	-86 614.93	3	027	550.64	R3	-86 625.17	3	027	479.17
L4	-86 601.38	3	027	489.89	R4	-86 563.64	3	027	330.89
L5	-86 527.48	3	027	350.27	R5	-86 414.23	3	027	057.81
L6	-86 524.82	3	027	345.23	R6	-86 356.49	3	026	959.79
L7	-86 454.42	3	027	195.28	R7	-86 299.58	3	026	863.66
L8	-86 342.67	3	026	994.62	R8	-86 252.01	3	026	783.32
L9	-86 328.90	3	026	969.91	R9	-86 127.31	3	026	597.72
L10	-86 288.47	3	026	904.19	R10	-86 027.71	3	026	451.25
L11	-86 225.11	3	026	801.22	R11	-85 860.66	3	026	212.92
L12	-86 101.56	3	026	616.96	R12	-85 826.10	3	026	163.62
L13	-86 001.41	3	026	467.60	R13	-85 552.12	3	025	756.50
L14	-85 817.69	3	026	195.75	R14	-85 545.57	3	025	746.96
L15	-85 532.62	3	025	778.11	R15	-85 422.39	3	025	567.47
L16	-85 522.56	3	025	763.38	R16	-85 354.43	3	025	483.43
L17	-85 414.16	3	025	609.58	R17	-85 293.40	3	025	407.15
L18	-85 340.84	3	025	515.86	R18	-85 267.25	3	025	379.17
L19	-85 306.75	3	025	472.27	R19	-85 161.49	3	025	265.98
L20	-85 241.70	3	025	399.97	R20	-85 040.36	3	025	160.16
L21	-85 196.38	3	025	349.60	R21	-84 965.12	3	025	095.99
L22	-85 125.88	3	025	280.13	R22	-84 590.30	3	024	811.77
L23	-85 011.12	3	025	174.45	R23	-84 198.46	3	024	516.83
L24	-84 950.17	3	025	123.00	R24	-84 012.65	3	024	377.11
L25	-84 590.63	3	024	851.90	R25	-83 973.86	3	024	347.94
L26	-84 244.13	3	024	591.67	R26	-83 685.47	3	024	132.71
L27	-84 240.16	3	024	588.68	R27	-83 459.54	3	023	962.21
L28	-84 181.96	3	024	544.83	R28	-83 088.85	3	023	683.80
L29	-83 984.90	3	024	398.93	R29	-82 878.40	3	023	526.13
L30	-83 945.25	3	024	369.19	R30	-82 561.68	3	023	288.51
L31	-83 687.11	3	024	174.80	R31	-82 091.68	3	022	932.36
L32	-83 489.91	3	024	026.28	R32	-82 020.92	3	022	868.36
L33	-83 063.37	3	023	704.40	R33	-81 903.71	3	022	763.93
L34	-82 858.85	3	023	549.85	R34	-81 737.85	3	022	613.04
L35	-82 659.45	3	023	401.30	R35	-81 596.59	3	022	484.54
L36	-82 543.05	3	023	314.58	R36	-81 272.72	3	022	182.06
L37	-82 081.89	3	022	967.66	R37	-81 256.86	3	022	167.28
L38	-81 944.88	3	022	848.00	R38	-80 843.58	3	021	782.27
L39	-81 877.03	3	022	786.69	R39	-80 437.50	3	021	403.57
L40	-81 702.30	3	022	624.75	R40	-80 129.09	3	021	116.72
L41	-81 572.87	3	022	504.79	R41	-80 054.92	3	021	042.85
L42	-81 275.66	3	022	227.50	R42	-79 648.65	3	020	587.58
L43	-80 819.73	3	021	801.81	R43	-79 235.57	3	020	132.63
L44	-80 633.80	3	021	628.54	R44	-79 231.33	3	020	127.13
L45	-80 412.68	3	021	422.49	R45	-78 670.61	3	019	380.31
L46	-80 155.47	3	021	182.52	R46	-78 368.74	3	018	978.11
L47	-80 039.06	3	021	064.47	R47	-78 207.89	3	018	750.06
L48	-79 627.84	3	020	608.48	R48	-78 117.21	3	018	570.14
L49	-79 217.04	3	020	155.05	R49	-78 058.48	3	018	433.45
L50	-79 211.74	3	020	149.20	R50	-77 991.23	3	018	286.72
L51	-78 931.02	3	019	776.93	R51	-77 935.03	3	018	166.21
					Vel 17 Van 23 Sheet of P1194/20				

PADRESERWE KOÖRDINATE / ROAD RESERVE CO-ORDINATES									
LINKERKANT/LEFT HAND SIDE					REGTERKANT/RIGHT HAND SIDE				
	Y		X	WG 29 ^e		Y		X	
L52	-78 638.85	3	019	390.09	R52	-77 869.97	3	018	026.69
L53	-78 182.33	3	018	782.42	R53	-77 776.18	3	017	879.25
L54	-77 898.08	3	018	163.38	R54	-77 711.40	3	017	777.42
L55	-77 860.88	3	018	082.37	R55	-77 654.98	3	017	689.61
L56	-77 809.99	3	017	984.02	R56	-77 546.87	3	017	521.35
L57	-77 744.12	3	017	891.89	R57	-77 456.18	3	017	336.93
L58	-77 724.93	3	017	851.55	R58	-77 442.44	3	017	308.99
L59	-77 627.28	3	017	714.48	R59	-77 233.60	3	016	894.47
L60	-77 536.71	3	017	567.94	R60	-77 101.05	3	016	695.66
L61	-77 424.63	3	017	339.82	R61	-76 921.96	3	016	490.14
L62	-77 422.01	3	017	334.54	R62	-76 711.79	3	016	299.85
L63	-77 257.94	3	017	002.89	R63	-76 557.71	3	016	191.81
L64	-77 216.61	3	016	926.63	R64	-76 364.40	3	016	068.58
L65	-77 073.51	3	016	711.15	R65	-76 143.04	3	015	925.26
L66	-76 900.31	3	016	513.73	R66	-75 908.24	3	015	784.58
L67	-76 648.00	3	016	293.21	R67	-75 887.98	3	015	774.04
L68	-76 548.78	3	016	221.65	R68	-75 757.95	3	015	709.87
L69	-76 381.69	3	016	115.82	R69	-75 569.90	3	015	671.42
L70	-75 906.24	3	015	818.08	R70	-75 541.08	3	015	665.70
L71	-75 736.35	3	015	753.85	R71	-75 355.43	3	015	628.89
L72	-75 597.26	3	015	724.00	R72	-75 247.50	3	015	590.89
L73	-75 572.09	3	015	717.43	R73	-75 219.59	3	015	575.44
L74	-75 374.12	3	015	665.77	R74	-75 110.26	3	015	514.92
L75	-75 238.50	3	015	622.51	R75	-75 016.18	3	015	448.61
L76	-75 225.13	3	015	615.88	R76	-74 996.55	3	015	430.10
L77	-75 119.74	3	015	563.57	R77	-74 965.58	3	015	400.89
L78	-74 989.77	3	015	467.22	R78	-74 930.30	3	015	367.63
L79	-74 983.50	3	015	461.44	R79	-74 521.67	3	014	941.22
L80	-74 915.54	3	015	398.79	R80	-74 512.66	3	014	931.82
L81	-74 908.17	3	015	391.17	R81	-74 488.90	3	014	909.02
L82	-74 504.59	3	014	973.58	R82	-74 367.86	3	014	792.94
L83	-74 417.95	3	014	883.88	R83	-74 297.37	3	014	731.63
L84	-74 283.39	3	014	760.52	R84	-73 913.05	3	014	442.62
L85	-73 855.47	3	014	438.38	R85	-73 520.65	3	014	148.01
L86	-73 489.05	3	014	163.10	R86	-73 261.69	3	013	972.00
L87	-73 246.95	3	013	999.95	R87	-73 003.77	3	013	827.97
L88	-72 991.29	3	013	856.42	R88	-72 769.13	3	013	696.93
L89	-72 755.86	3	013	724.25	R89	-72 405.87	3	013	491.81
L90	-72 430.23	3	013	541.48	R90	-72 015.45	3	013	272.02
L91	-71 899.90	3	013	244.62	R91	-71 488.36	3	012	976.35
L92	-71 516.16	3	013	028.55	R92	-71 147.37	3	012	785.45
L93	-71 108.86	3	012	800.12	R93	-71 111.29	3	012	765.26
L94	-71 101.73	3	012	796.12	R94	-70 452.08	3	012	395.56
L95	-70 903.11	3	012	684.73	R95	-70 403.10	3	012	368.09
L96	-70 444.78	3	012	426.07	R96	-69 611.80	3	011	745.93
L97	-70 345.62	3	012	362.31	R97	-69 399.34	3	011	580.61
L98	-70 218.78	3	012	263.52	R98	-69 293.15	3	011	497.98
L99	-69 645.85	3	011	812.48	R99	-69 199.95	3	011	435.23
L100	-69 393.38	3	011	614.67	R100	-68 815.93	3	011	223.15
L101	-69 298.96	3	011	542.98	R101	-68 642.72	3	011	127.49
L102	-69 201.03	3	011	473.35	R102	-68 337.78	3	010	960.30
					Vel 18 Van 23 Sheet of P1194/20				

PADRESERWE KOÖRDINATE / ROAD RESERVE CO-ORDINATES									
LINKERKANT/LEFT HAND SIDE					REGTERKANT/RIGHT HAND SIDE				
	Y	X	WG 29º			Y	X		
L103	-68 810.33	3 011 256.29			R103	-67 989.18	3 010 768.96		
L104	-68 634.45	3 011 158.72			R104	-67 841.20	3 010 687.74		
L105	-68 269.38	3 010 957.80			R105	-67 830.99	3 010 682.14		
L106	-67 979.02	3 010 797.88			R106	-67 580.59	3 010 543.06		
L107	-67 911.12	3 010 760.48			R107	-67 484.67	3 010 487.83		
L108	-67 843.61	3 010 723.30			R108	-67 427.09	3 010 444.70		
L109	-67 559.41	3 010 566.62			R109	-67 318.97	3 010 323.28		
L110	-67 513.07	3 010 541.07			R110	-67 037.61	3 009 949.53		
L111	-67 369.45	3 010 442.32			R111	-66 889.79	3 009 753.74		
L112	-67 304.73	3 010 355.36			R112	-66 847.67	3 009 700.27		
L113	-66 989.70	3 009 943.07			R113	-66 720.50	3 009 568.50		
L114	-66 839.94	3 009 741.55			R114	-66 690.00	3 009 542.61		
L115	-66 819.18	3 009 716.06			R115	-66 636.99	3 009 501.14		
L116	-66 792.59	3 009 685.35			R116	-66 592.52	3 009 469.26		
L117	-66 729.74	3 009 622.03			R117	-66 535.51	3 009 433.06		
L118	-66 692.37	3 009 585.84			R118	-66 379.56	3 009 344.13		
L119	-66 641.56	3 009 542.87			R119	-66 096.68	3 009 185.83		
L120	-66 584.21	3 009 501.46			R120	-66 018.35	3 009 142.15		
L121	-66 541.16	3 009 472.27			R121	-65 871.09	3 009 047.79		
L122	-66 360.29	3 009 370.35			R122	-65 851.31	3 009 029.13		
L123	-66 083.87	3 009 214.76			R123	-65 797.80	3 008 970.63		
L124	-65 943.90	3 009 135.27			R124	-65 440.36	3 008 518.54		
L125	-65 861.60	3 009 076.99			R125	-65 403.03	3 008 476.95		
L126	-65 788.75	3 009 009.50			R126	-65 359.68	3 008 436.79		
L127	-65 649.04	3 008 832.89			R127	-65 250.46	3 008 355.78		
L128	-65 397.88	3 008 515.40			R128	-65 155.27	3 008 285.11		
L129	-65 354.60	3 008 473.56			R129	-64 669.04	3 007 930.61		
L130	-65 308.34	3 008 435.37			R130	-64 564.29	3 007 861.44		
L131	-65 234.88	3 008 381.89			R131	-64 485.55	3 007 809.93		
L132	-65 134.18	3 008 308.28			R132	-64 289.71	3 007 722.05		
L133	-64 632.57	3 007 943.01			R133	-64 158.06	3 007 672.69		
L134	-64 539.59	3 007 880.35			R134	-63 956.69	3 007 611.30		
L135	-64 464.56	3 007 837.80			R135	-63 600.98	3 007 502.18		
L136	-64 281.36	3 007 753.24			R136	-63 218.72	3 007 382.73		
L137	-64 141.72	3 007 707.01			R137	-62 949.45	3 007 253.88		
L138	-63 946.25	3 007 646.30			R138	-62 758.01	3 007 238.73		
L139	-63 591.97	3 007 536.36			R139	-62 283.03	3 007 093.69		
L140	-63 236.84	3 007 426.34			R140	-62 178.74	3 007 059.84		
L141	-63 025.84	3 007 360.98			R141	-62 089.13	3 007 019.13		
L142	-62 748.98	3 007 275.57			R142	-62 098.06	3 006 996.86		
L143	-62 273.13	3 007 128.09			R143	-61 984.18	3 006 935.21		
L144	-62 098.82	3 007 059.18			R144	-61 835.05	3 006 840.09		
L145	-62 094.86	3 007 057.18			R145	-61 768.40	3 006 799.31		
L146	-62 077.40	3 007 048.37			R146	-61 633.38	3 006 716.70		
L147	-61 988.20	3 007 001.10			R147	-61 591.91	3 006 692.27		
L148	-61 876.80	3 006 936.97			R148	-61 522.65	3 006 651.48		
L149	-61 740.06	3 006 850.15			R149	-61 486.85	3 006 619.84		
L150	-61 661.21	3 006 799.22			R150	-61 427.39	3 006 579.30		
L151	-61 587.67	3 006 758.88			R151	-61 339.71	3 006 509.14		
L152	-61 547.23	3 006 738.02			R152	-61 298.67	3 006 470.81		
L153	-61 504.88	3 006 707.02			R153	-61 257.64	3 006 432.48		
					Vel Sheet	19	Van of	23	P1194/20

PADRESERWE KOÖRDINATE / ROAD RESERVE CO-ORDINATES									
LINKERKANT/LEFT HAND SIDE					REGTERKANT/RIGHT HAND SIDE				
	Y		X	WG 29 ^a		Y		X	
L154	-61 309.67	3 006	557.49		R154	-61 170.40	3 006	336.37	
L155	-61 211.54	3 006	463.94		R155	-61 155.71	3 006	359.47	
L156	-61 138.71	3 006	386.20		R156	-61 051.03	3 006	228.77	
L157	-61 008.31	3 006	226.10		R157	-60 760.07	3 005	866.43	
L158	-60 744.96	3 005	899.56		R158	-60 768.41	3 005	822.72	
L159	-60 651.50	3 005	796.20		R159	-60 600.92	3 005	705.15	
L160	-60 552.39	3 005	705.42		R160	-60 492.38	3 005	617.75	
L161	-60 460.72	3 005	633.97		R161	-60 321.97	3 005	499.71	
L162	-60 296.35	3 005	531.20		R162	-60 245.33	3 005	466.62	
L163	-60 236.50	3 005	502.39		R163	-60 180.97	3 005	438.83	
L164	-60 140.20	3 005	456.05		R164	-60 089.86	3 005	402.21	
L165	-60 024.52	3 005	416.50		R165	-58 772.12	3 005	041.58	
L166	-59 821.28	3 005	360.03		R166	-58 613.34	3 005	008.53	
L167	-59 320.62	3 005	222.71		R167	-57 779.06	3 004	845.57	
L168	-58 863.93	3 005	097.28		R168	-57 535.77	3 004	797.87	
L169	-58 762.99	3 005	070.00		R169	-57 520.76	3 004	794.94	
L170	-58 589.09	3 005	035.78		R170	-56 992.60	3 004	691.87	
L171	-58 179.83	3 004	955.90		R171	-56 597.86	3 004	613.79	
L172	-57 782.89	3 004	878.20		R172	-56 072.59	3 004	512.07	
L173	-57 765.03	3 004	874.73		R173	-55 843.85	3 004	467.48	
L174	-57 538.58	3 004	830.74		R174	-55 481.37	3 004	391.81	
L175	-57 523.96	3 004	827.89		R175	-55 084.72	3 004	314.86	
L176	-56 984.43	3 004	722.83		R176	-54 676.03	3 004	235.10	
L177	-56 594.07	3 004	646.24		R177	-54 276.52	3 004	157.42	
L178	-56 076.93	3 004	545.31		R178	-54 041.91	3 004	111.78	
L179	-55 835.01	3 004	498.24		R179	-53 920.72	3 004	085.86	
L180	-55 471.99	3 004	430.80		R180	-53 705.83	3 004	026.93	
L181	-55 079.81	3 004	354.53		R181	-53 493.04	3 003	956.48	
L182	-54 626.38	3 004	266.16		R182	-53 145.55	3 003	842.35	
L183	-54 266.42	3 004	194.85		R183	-53 101.36	3 003	827.40	
L184	-53 908.00	3 004	123.67		R184	-52 813.54	3 003	730.03	
L185	-53 789.10	3 004	093.10		R185	-52 717.43	3 003	697.51	
L186	-53 478.02	3 003	992.46		R186	-52 658.32	3 003	677.51	
L187	-53 125.08	3 003	875.74		R187	-52 154.92	3 003	509.40	
L188	-53 097.97	3 003	866.69		R188	-51 984.73	3 003	452.38	
L189	-53 053.37	3 003	851.80		R189	-51 823.21	3 003	398.25	
L190	-52 786.20	3 003	762.61		R190	-51 608.17	3 003	326.51	
L191	-52 690.30	3 003	730.59		R191	-51 461.33	3 003	277.53	
L192	-52 661.16	3 003	720.86		R192	-51 031.69	3 003	133.87	
L193	-52 141.32	3 003	545.60		R193	-50 609.00	3 002	992.78	
L194	-51 987.44	3 003	494.69		R194	-50 234.46	3 002	866.96	
L195	-51 809.74	3 003	435.91		R195	-50 058.01	3 002	797.66	
L196	-51 461.50	3 003	319.55		R196	-49 934.79	3 002	741.44	
L197	-51 020.67	3 003	171.85		R197	-49 789.36	3 002	666.13	
L198	-50 590.67	3 003	027.80		R198	-49 693.18	3 002	610.98	
L199	-50 218.73	3 002	903.47		R199	-49 559.47	3 002	525.97	
L200	-50 043.80	3 002	834.90		R200	-49 484.54	3 002	474.32	
L201	-49 917.58	3 002	777.72		R201	-49 081.39	3 002	182.17	
L202	-49 793.57	3 002	714.29		R202	-48 836.26	3 002	005.38	
L203	-49 672.58	3 002	645.08		R203	-48 590.17	3 001	829.08	
L204	-49 537.37	3 002	559.07		R204	-48 208.20	3 001	592.73	
Vel Sheet					20	Van of		23	P1194/20

PADRESERWE KOÖRDINATE / ROAD RESERVE CO-ORDINATES									
LINKERKANT/LEFT HAND SIDE					REGTERKANT/RIGHT HAND SIDE				
	Y		X	WG 29 ^e		Y		X	
L205	-49 466.71	3 002	510.00		R205	-47 992.75	3 001	459.61	
L206	-49 081.32	3 002	230.53		R206	-47 817.31	3 001	351.23	
L207	-48 828.50	3 002	046.71		R207	-47 460.28	3 001	136.10	
L208	-48 610.67	3 001	890.58		R208	-47 207.20	3 000	968.98	
L209	-48 191.38	3 001	628.77		R209	-46 890.33	3 000	760.58	
L210	-47 971.94	3 001	493.36		R210	-46 877.58	3 000	752.53	
L211	-47 777.04	3 001	373.08		R211	-46 490.04	3 000	497.37	
L212	-47 442.44	3 001	165.92		R212	-46 302.55	3 000	365.48	
L213	-47 178.90	3 000	997.99		R213	-46 194.15	3 000	278.60	
L214	-46 886.38	3 000	805.44		R214	-46 101.14	3 000	197.07	
L215	-46 871.91	3 000	795.92		R215	-46 041.04	3 000	140.60	
L216	-46 469.45	3 000	531.56		R216	-45 919.47	3 000	016.25	
L217	-46 264.10	3 000	386.32		R217	-45 647.45	2 999	706.74	
L218	-46 168.58	3 000	309.08		R218	-45 539.69	2 999	582.32	
L219	-46 074.65	3 000	227.01		R219	-45 410.55	2 999	433.02	
L220	-46 017.30	3 000	173.08		R220	-45 218.78	2 999	212.65	
L221	-45 884.70	3 000	037.63		R221	-45 088.36	2 999	062.78	
L222	-45 821.12	2 999	965.01		R222	-44 958.33	2 998	904.95	
L223	-45 608.03	2 999	721.62		R223	-44 893.48	2 998	816.05	
L224	-45 339.31	2 999	412.09		R224	-44 791.11	2 998	655.98	
L225	-45 148.12	2 999	191.63		R225	-44 697.17	2 998	488.50	
L226	-45 042.89	2 999	070.05		R226	-44 474.06	2 998	089.35	
L227	-44 932.17	2 998	936.21		R227	-44 259.90	2 997	704.90	
L228	-44 859.74	2 998	837.94		R228	-44 104.78	2 997	463.79	
L229	-44 755.54	2 998	673.83		R229	-43 953.65	2 997	252.33	
L230	-44 661.50	2 998	505.87		R230	-43 693.06	2 996	886.50	
L231	-44 436.56	2 998	104.86		R231	-43 408.53	2 996	527.73	
L232	-44 223.87	2 997	724.75		R232	-43 123.02	2 996	172.93	
L233	-44 073.39	2 997	488.22		R233	-42 837.83	2 995	818.19	
L234	-43 921.33	2 997	274.78		R234	-42 744.64	2 995	712.31	
L235	-43 661.24	2 996	910.61		R235	-42 628.06	2 995	602.99	
L236	-43 376.98	2 996	552.42		R236	-42 501.98	2 995	505.43	
L237	-43 092.91	2 996	198.79		R237	-42 368.73	2 995	408.54	
L238	-42 806.36	2 995	842.98		R238	-42 276.08	2 995	341.18	
L239	-42 712.00	2 995	735.64		R239	-42 132.36	2 995	236.69	
L240	-42 601.29	2 995	632.77		R240	-41 674.82	2 994	905.54	
L241	-42 479.82	2 995	538.46		R241	-41 379.56	2 994	716.85	
L242	-42 320.32	2 995	422.77		R242	-40 872.08	2 994	464.18	
L243	-42 279.09	2 995	392.87		R243	-40 392.79	2 994	236.38	
L244	-42 108.91	2 995	269.44		R244	-39 961.74	2 994	019.96	
L245	-41 669.09	2 994	950.51		R245	-39 741.50	2 993	893.76	
L246	-41 360.81	2 994	752.52		R246	-39 347.51	2 993	668.96	
L247	-40 898.43	2 994	522.27		R247	-38 950.47	2 993	441.90	
L248	-40 855.32	2 994	500.80		R248	-38 577.77	2 993	228.97	
L249	-40 374.04	2 994	271.79		R249	-38 553.35	2 993	215.02	
L250	-39 944.36	2 994	056.61		R250	-38 155.98	2 992	987.80	
L251	-39 715.54	2 993	925.54		R251	-37 755.77	2 992	765.84	
L252	-39 327.53	2 993	703.65		R252	-37 349.92	2 992	551.63	
L253	-38 931.30	2 993	477.34		R253	-36 946.01	2 992	338.45	
L254	-38 551.59	2 993	260.07		R254	-36 736.71	2 992	227.65	
L255	-38 532.25	2 993	249.01		R255	-36 601.48	2 992	150.07	
					<div> <div>Vel</div> <div>21</div> <div>Van</div> <div>23</div> <div>Sheet</div> <div>of</div> <div>P1194/20</div> </div>				

PADRESERWE KOÖRDINATE / ROAD RESERVE CO-ORDINATES									
LINKERKANT/LEFT HAND SIDE					REGTERKANT/RIGHT HAND SIDE				
	Y	X	WG 29°			Y	X		
L256	-38 136.24	2 993 022.88		R256	-36 512.39	2 992 084.32			
L257	-37 736.42	2 992 801.05		R257	-36 418.39	2 992 002.24			
L258	-37 332.29	2 992 587.73		R258	-36 350.24	2 991 929.43			
L259	-36 927.13	2 992 373.80		R259	-36 292.02	2 991 856.35			
L260	-36 716.78	2 992 261.49		R260	-36 054.50	2 991 516.10			
L261	-36 624.09	2 992 211.12		R261	-35 840.56	2 991 210.04			
L262	-36 483.71	2 992 113.99		R262	-35 785.74	2 991 138.84			
L263	-36 394.56	2 992 035.21		R263	-35 676.97	2 991 030.04			
L264	-36 320.28	2 991 956.10		R264	-35 670.61	2 991 025.02			
L265	-36 261.02	2 991 882.19		R265	-35 602.52	2 990 971.24			
L266	-35 989.63	2 991 493.80		R266	-35 445.20	2 990 866.67			
L267	-35 806.65	2 991 230.38		R267	-35 053.12	2 990 606.30			
L268	-35 764.50	2 991 177.38		R268	-34 840.03	2 990 465.16			
L269	-35 640.77	2 991 045.33		R269	-34 721.12	2 990 386.29			
L270	-35 420.40	2 990 895.44		R270	-34 564.37	2 990 274.21			
L271	-35 410.65	2 990 910.41		R271	-34 420.14	2 990 155.67			
L272	-35 374.86	2 990 888.06		R272	-34 296.03	2 990 038.49			
L273	-35 315.91	2 990 844.59		R273	-34 253.00	2 989 992.63			
L274	-34 401.33	2 990 208.79		R274	-34 218.30	2 989 955.65			
L275	-34 341.36	2 990 161.50		R275	-34 171.53	2 989 905.76			
L276	-34 273.98	2 990 108.37		R276	-34 053.17	2 989 763.93			
L277	-34 250.50	2 990 089.85		R277	-33 853.76	2 989 519.15			
L278	-34 266.18	2 990 065.29		R278	-33 755.82	2 989 398.70			
L279	-34 189.01	2 989 985.31		R279	-33 605.41	2 989 213.69			
L280	-34 128.91	2 989 915.10		R280	-33 377.01	2 988 933.12			
L281	-34 027.14	2 989 789.27		R281	-33 176.32	2 988 686.79			
L282	-33 816.29	2 989 536.42		R282	-33 099.74	2 988 593.10			
L283	-33 709.93	2 989 405.79		R283	-32 975.24	2 988 440.79			
L284	-33 573.00	2 989 237.61		R284	-32 871.43	2 988 332.99			
L285	-33 345.87	2 988 958.56		R285	-32 799.49	2 988 273.81			
L286	-33 145.08	2 988 712.06		R286	-32 773.66	2 988 252.56			
L287	-33 041.02	2 988 584.78		R287	-32 694.35	2 988 198.13			
L288	-33 036.37	2 988 579.09		R288	-32 445.47	2 988 047.87			
L289	-32 944.53	2 988 466.75		R289	-32 302.58	2 987 961.82			
L290	-32 845.37	2 988 363.66		R290	-32 085.45	2 987 831.05			
L291	-32 777.45	2 988 306.05		R291	-31 804.51	2 987 661.48			
L292	-32 672.75	2 988 231.84		R292	-31 797.46	2 987 657.22			
L293	-32 424.49	2 988 081.85		R293	-31 777.63	2 987 645.25			
L294	-32 318.97	2 988 018.26		R294	-31 771.00	2 987 641.26			
L295	-32 063.21	2 987 864.12		R295	-31 380.01	2 987 406.03			
L296	-31 742.32	2 987 670.69		R296	-31 037.45	2 987 199.93			
L297	-31 357.65	2 987 438.45		R297	-30 739.40	2 987 020.63			
L298	-31 140.20	2 987 307.84		R298	-30 632.37	2 986 956.35			
L299	-31 017.30	2 987 234.03		R299	-30 571.16	2 986 922.83			
L300	-30 699.32	2 987 042.57		R300	-30 445.75	2 986 854.15			
L301	-30 596.68	2 986 981.75		R301	-30 033.87	2 986 656.64			
L302	-30 427.23	2 986 889.29		R302	-29 877.83	2 986 582.82			
L303	-30 020.35	2 986 694.63		R303	-29 579.18	2 986 440.63			
L304	-29 864.45	2 986 620.36		R304	-29 301.00	2 986 307.02			
L305	-29 562.69	2 986 476.78		R305	-29 153.97	2 986 231.24			
L306	-29 284.28	2 986 343.69		R306	-28 953.91	2 986 107.56			
Vel Sheet					22	Van of	23	P1194/20	

PADRESERWE KOÖRDINATE / ROAD RESERVE CO-ORDINATES									
LINKERKANT/LEFT HAND SIDE					REGTERKANT/RIGHT HAND SIDE				
	Y		X	WG 29 ^a		Y		X	
L307	-29 154.80	2	986	276.13	R307	-28 702.70	2	985	945.58
L308	-29 144.17	2	986	270.58	R308	-28 451.41	2	985	782.87
L309	-28 931.67	2	986	145.05	R309	-28 199.79	2	985	620.00
L310	-28 696.05	2	985	992.48	R310	-28 032.22	2	985	511.19
L311	-28 433.44	2	985	823.22	R311	-27 772.51	2	985	343.21
L312	-28 174.05	2	985	654.84	R312	-27 520.92	2	985	180.14
L313	-28 008.71	2	985	548.09	R313	-27 439.10	2	985	123.56
L314	-27 693.56	2	985	339.09	R314	-27 364.50	2	985	055.89
L315	-27 485.65	2	985	204.58	R315	-27 299.22	2	984	979.87
L316	-27 477.92	2	985	200.08	R316	-27 241.22	2	984	921.84
L317	-27 377.94	2	985	138.98	R317	-27 214.46	2	984	904.48
L318	-27 327.55	2	985	089.50	R318	-27 176.88	2	984	887.69
L319	-27 282.07	2	985	033.93	R319	-27 146.40	2	984	878.02
L320	-27 263.51	2	985	011.25	R320	-27 075.32	2	984	862.60
L321	-27 215.46	2	984	961.74	R321	-27 024.29	2	984	866.79
L322	-27 170.81	2	984	930.88	R322	-26 982.34	2	984	870.24
L323	-27 105.72	2	984	914.72	R323	-26 962.89	2	984	871.84
L324	-27 098.80	2	984	915.10	R324	-26 931.41	2	984	877.08
L325	-27 042.80	2	984	918.15	R325	-26 845.93	2	984	891.30
L326	-26 990.46	2	984	924.02	R326	-26 808.04	2	984	884.09
L327	-26 883.21	2	984	932.73	R327	-26 756.37	2	984	874.26
L328	-26 786.54	2	984	929.25	R328	-26 369.34	2	984	691.59
L329	-26 783.71	2	984	929.15	R1X	-86 652.23	3	027	725.44
L330	-26 350.78	2	984	726.92	R2X	-86 683.91	3	027	580.41
L1X	-86 620.40	3	027	744.46	R136X	-63 026.45	3	007	322.65
L1Y	-86 621.13	3	027	736.40	R136Y	-62 990.62	3	007	265.38
L2X	-86 625.15	3	027	648.64	R136Z	-62 981.79	3	007	243.44
L2Y	-86 622.88	3	027	610.29	R137X	-62 951.60	3	007	260.54
L146X	-62 064.78	3	007	041.69	R137Y	-62 950.13	3	007	272.71
L146Y	-62 031.41	3	007	024.00	R137Z	-62 919.87	3	007	289.33
L146Z	-62 012.48	3	007	013.97	R142X	-62 080.90	3	006	987.66
L147X	-61 959.15	3	006	984.63	R142Y	-62 049.73	3	006	971.00
L147Y	-61 923.93	3	006	964.66	R142Z	-62 016.94	3	006	952.94
L147Z	-61 890.27	3	006	945.52	R143A	-61 948.91	3	006	912.77
L148A	-61 860.59	3	006	926.68	R143X	-61 931.73	3	006	901.81
L148X	-61 841.12	3	006	914.32	R143Y	-61 899.51	3	006	881.20
L148Y	-61 807.84	3	006	893.18	R143Z	-61 868.26	3	006	861.27
L148Z	-61 773.27	3	006	871.23	R144X	-61 801.90	3	006	819.81
L149X	-61 708.25	3	006	829.60	R145A	-61 744.20	3	006	784.51
L153X	-61 481.78	3	006	689.32	R145X	-61 724.59	3	006	772.51
					R145Y	-61 701.75	3	006	758.53
					R145Z	-61 669.11	3	006	738.56
					R156X	-61 039.19	3	006	214.00
					R157X	-60 775.27	3	005	848.72
					R157Y	-60 792.08	3	005	851.66
					R157Z	-60 796.66	3	005	827.09
					R158X	-60 741.21	3	005	814.52
					R158Y	-60 711.92	3	005	812.58