
GOVERNMENT NOTICES • GOEWERMENTSKENNISGEWINGS

DEPARTMENT OF TRANSPORT

NO. 3330

21 April 2023

**THE SOUTH AFRICAN NATIONAL ROADS
AGENCY SOC LIMITED**Registration No: 1998/009584/30

**DECLARATION AMENDMENT OF NATIONAL ROAD N7 SECTION 8 – DE-DECLARATION OF A
SECTION AS NATIONAL ROAD**

AMENDMENT OF DECLARATION No. 289 OF 2018.

By virtue of Section 40 (1)(b) of The South African National Roads Agency Limited and the National Roads Act 1998 (Act No. 7 of 1998), I hereby amend declaration No. 289 of 2018 by de-declaring the section of road, being the operational area of Vioolsdrift Border Post, from points L422 and R433 up to points L427 and R440, on sheet 19 of Plan No. P895/16, as a National Road and substituting sheets 19 and 28 with the accompanying sheets 19A and 28A of Plan No. P895/16.

(National Road N7 Section 8: Springbok – Vioolsdrif)
MINISTER OF TRANSPORT

DEPARTEMENT VAN VERVOER

NO. 3330

21 April 2023

**DIE SUID-AFRIKAANSE NASIONALE
PADAGENTSKAP MSB BEPERK**

Registrasie No: 1998/009584/30

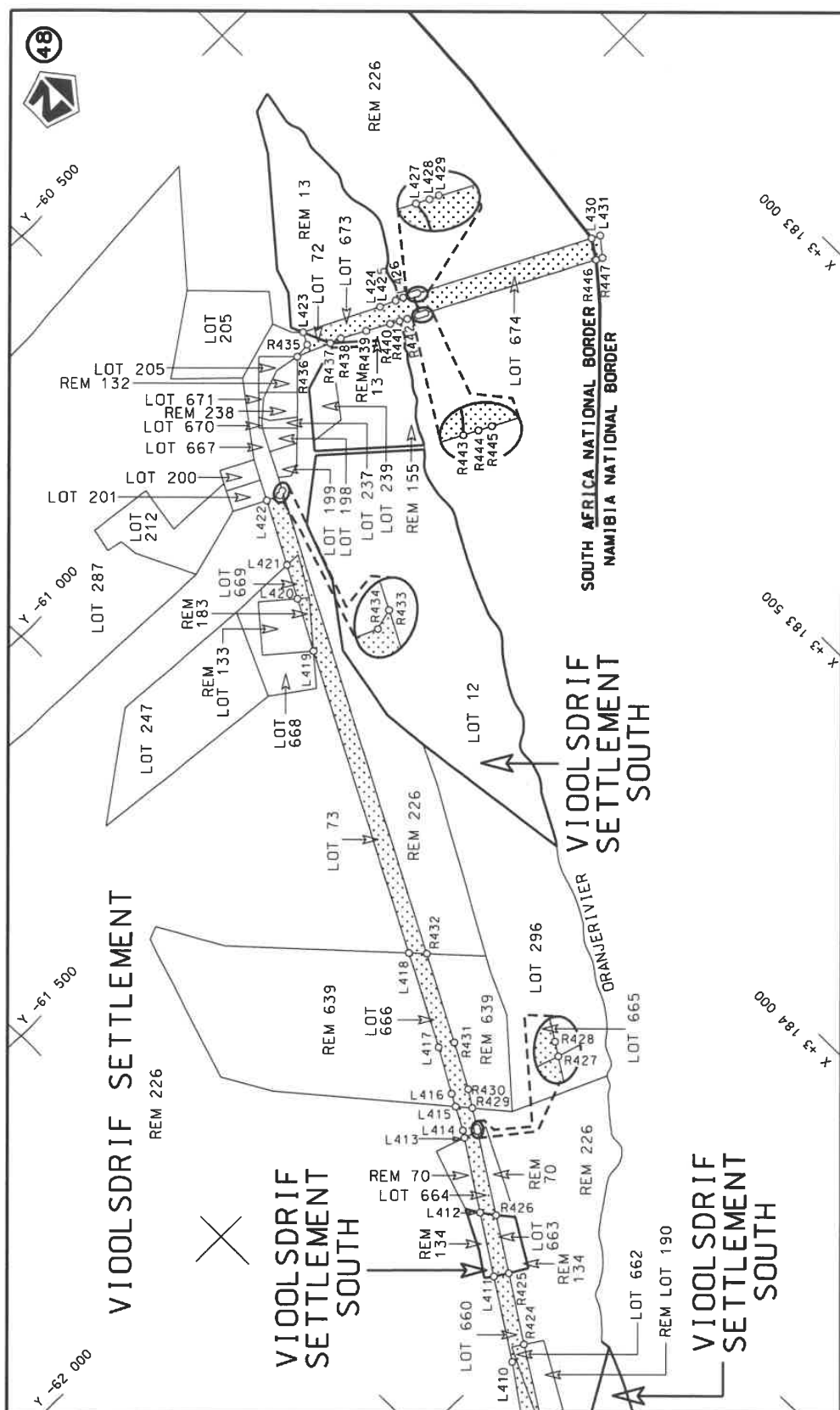
**VERKLARING WYSIGING VAN NASIONALE PAD N7 SEKSIE 8 – AFVERKLARING VAN 'N
GEDEELTE AS NASIONALE PAD.**


WYSIGING VAN VERKLARING No. 289 VAN 2018.

Kragtens Artikel 40(1)(b) van die Suid-Afrikaanse Nasionale Padagentskap Beperk en Nasionale Paaie Wet 1998 (Wet no.7 van 1998), wysig ek hiermee Verklaring No. 289 van 2018 deur die gedeelte van die pad, synde die operasionele area van Vioolsdrif Grenspos, vanaf punte L422 en R433 tot by punte L427 en R440, op vel 19 van Plan No. P895/16, af te verklaar as Nasionale Pad en deur velle 19 en 28 te vervang met bygaande velle 19A en 28A van Plan No. P895/16.

(Nasionale Pad N7 Seksie 8: Springbok – Vioolsdrif)

MINISTER VAN VERVOER



Die Suid Afrikaanse Nasionale Padagentskap MSB Bpk	Die figuur getoon		steldie padreserwe voor van 'n gedeelte represents the road reserve of a portion van Nasionale Roete N7 of National Route	8	Vel Sheet	19A of 28
The South African National Roads Agency SOC Ltd	The figure shown				Plan	P895/16

PADRESERWE KOÖRDINATE / ROAD RESERVE CO-ORDINATES						
LINKERKANT/LEFT HAND SIDE				REGTERKANT/RIGHT HAND SIDE		
	Y	X	WG 17°		Y	X
L409	-62 630.48	3 184 870.90		R409	-62 893.29	3 185 706.65
L410	-62 519.79	3 184 793.21		R410	-62 866.09	3 185 695.47
L411	-62 390.27	3 184 709.08		R411	-62 839.37	3 185 679.56
L412	-62 293.60	3 184 646.28		R412	-62 815.41	3 185 659.87
L413	-62 180.51	3 184 572.82		R413	-62 794.94	3 185 637.14
L414	-62 169.28	3 184 565.53		R414	-62 777.65	3 185 610.91
L415	-62 130.73	3 184 544.51		R415	-62 763.98	3 185 580.80
L416	-62 110.02	3 184 533.23		R416	-62 755.51	3 185 549.97
L417	-62 035.46	3 184 491.70		R417	-62 752.01	3 185 520.49
L418	-61 880.46	3 184 410.84		R418	-62 752.08	3 185 496.88
L419	-61 383.95	3 184 151.82		R419	-62 760.08	3 185 056.71
L420	-61 298.20	3 184 106.82		R420	-62 758.39	3 185 017.80
L421	-61 242.88	3 184 077.79		R421	-62 755.68	3 184 987.87
L422	-61 136.95	3 184 022.20		R422	-62 717.44	3 184 885.91
L423	-60 971.74	3 183 767.25		R423	-62 622.83	3 184 825.72
L424	-61 035.52	3 183 639.41		R424	-62 512.68	3 184 756.11
L425	-61 046.94	3 183 612.64		R425	-62 404.65	3 184 686.59
L426	-61 052.59	3 183 599.39		R426	-62 316.45	3 184 629.84
L427	-61 059.71	3 183 585.67		R427	-62 188.93	3 184 547.78
L428	-61 062.56	3 183 580.19		R428	-62 183.32	3 184 544.17
L429	-61 064.56	3 183 576.32		R429	-62 153.28	3 184 525.44
L430	-61 212.72	3 183 290.83		R430	-62 124.40	3 184 507.44
L431	-61 219.96	3 183 276.87		R431	-62 049.23	3 184 466.01
				R432	-61 903.52	3 184 389.49
				R433	-61 144.10	3 183 990.70
				R434	-61 146.54	3 184 000.03
				R435	-60 992.34	3 183 777.50
				R436	-60 994.83	3 183 804.74
				R437	-61 019.15	3 183 746.75
				R438	-61 026.15	3 183 727.80
				R439	-61 048.26	3 183 686.73
				R440	-61 069.22	3 183 648.25
				R441	-61 077.50	3 183 633.15
				R442	-61 084.24	3 183 620.85
				R443	-61 093.46	3 183 603.14
				R444	-61 096.71	3 183 596.90
				R445	-61 099.55	3 183 591.44
				R446	-61 245.05	3 183 311.99
				R447	-61 250.46	3 183 301.59