

## DEPARTMENT OF TRANSPORT

NO. 907

21 September 2021

**THE SOUTH AFRICAN NATIONAL ROADS  
AGENCY SOC LIMITED**

Registration No: 1998/009584/30

**DECLARATION AMENDMENT OF NATIONAL ROAD N6 SECTION 8**

AMENDMENT OF DECLARATION No. 1173 OF 2008.

By virtue of section 40(1)(b) of the South African National Roads Agency Limited and the National Roads Act 1998 (Act No. 7 of 1998), I hereby amend Declaration No. 1173 of 2008, the section of the route from its start up to points L84 and R74 on sheet 11 of Plan No. P679/08, by substituting it with the accompanying sheets 1 to 13 of Plan No. P1114/18.

**(National Road N6 Section 8: Reddersburg – R702 Intersection)****MINISTER OF TRANSPORT**

## DEPARTEMENT VAN VERVOER

NO. 907

21 September 2021

**DIE SUID-AFRIKAANSE NASIONALE  
PADAGENTSKAP MSB BEPERK**

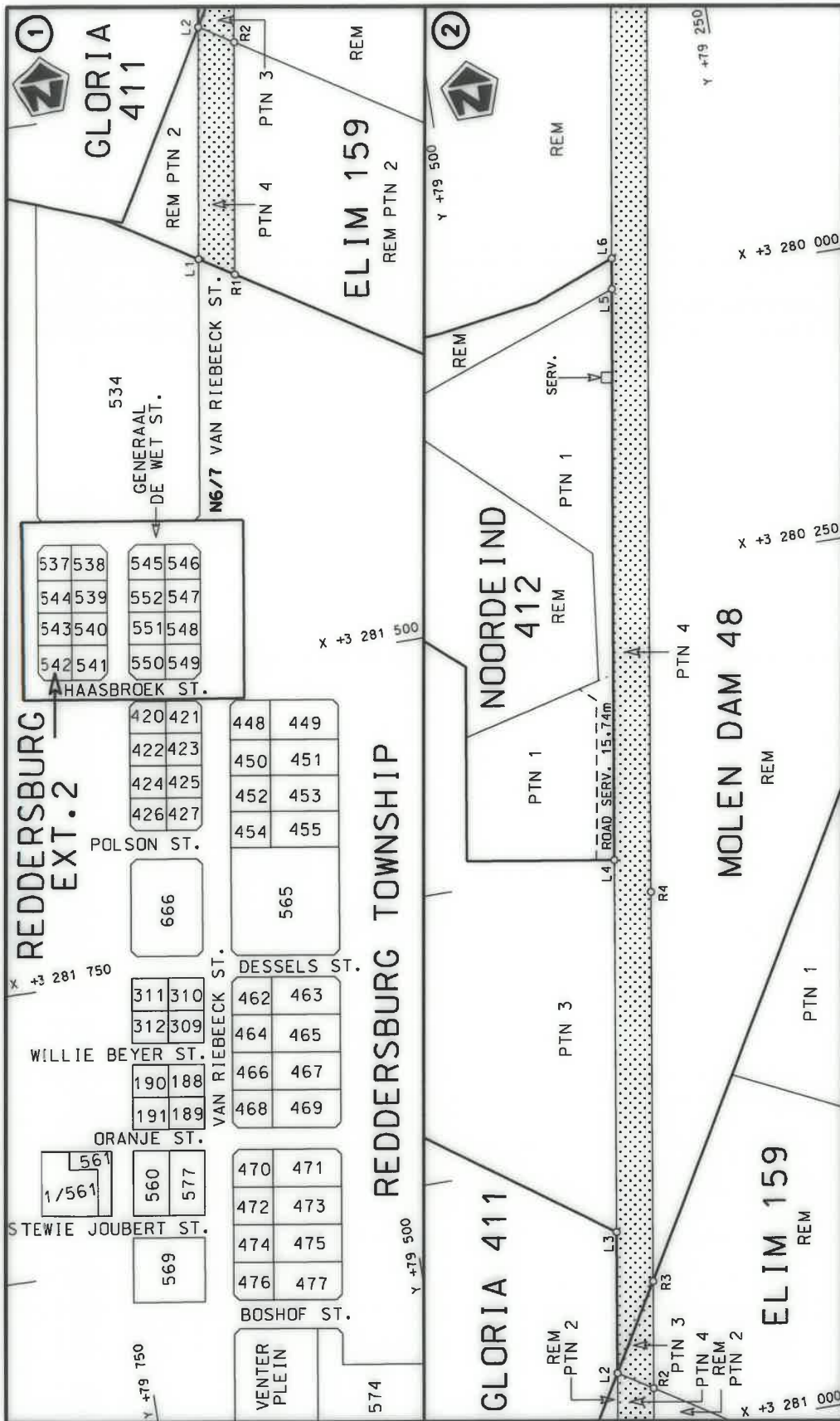
Registrasie No: 1998/009584/30

**VERKLARING WYSIGING VAN NASIONALE PAD N6 SEKSIE 8**

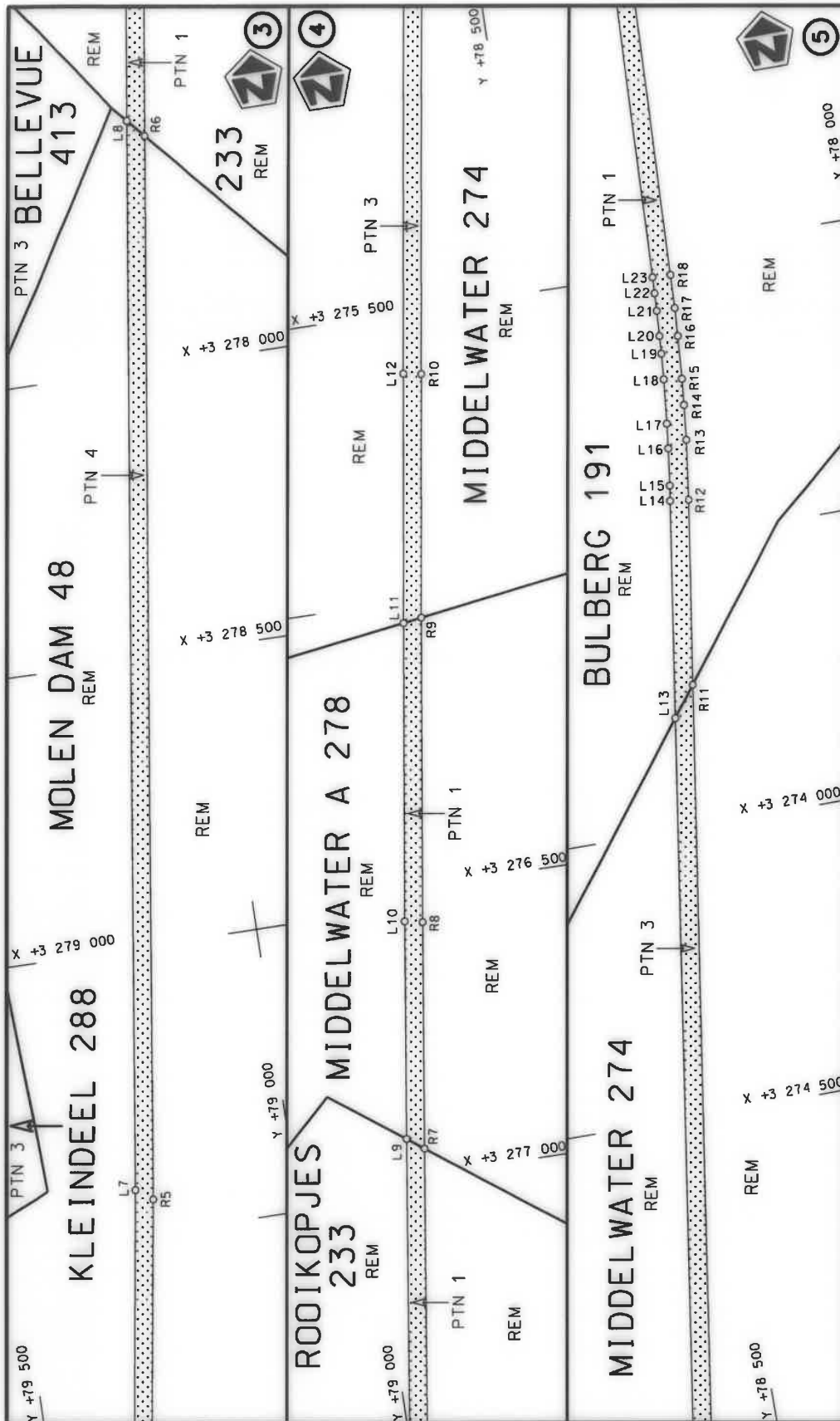
WYSIGING VAN VERKLARING No. 1173 VAN 2008.


Kragtens Artikel 40(1)(b) van die Suid-Afrikaanse Nasionale Padagentskap Beperk en Nasionale Paaie Wet 1998 (Wet No. 7 van 1998), wysig ek hiermee Verklaring No. 1173 van 2008, die gedeelte van die roete vanaf die begin tot by punte L84 en R74 op vel 11 van Plan No. P679/08, deur dit te vervang met bygaande velle 1 tot 13 van Plan No. P1114/18.

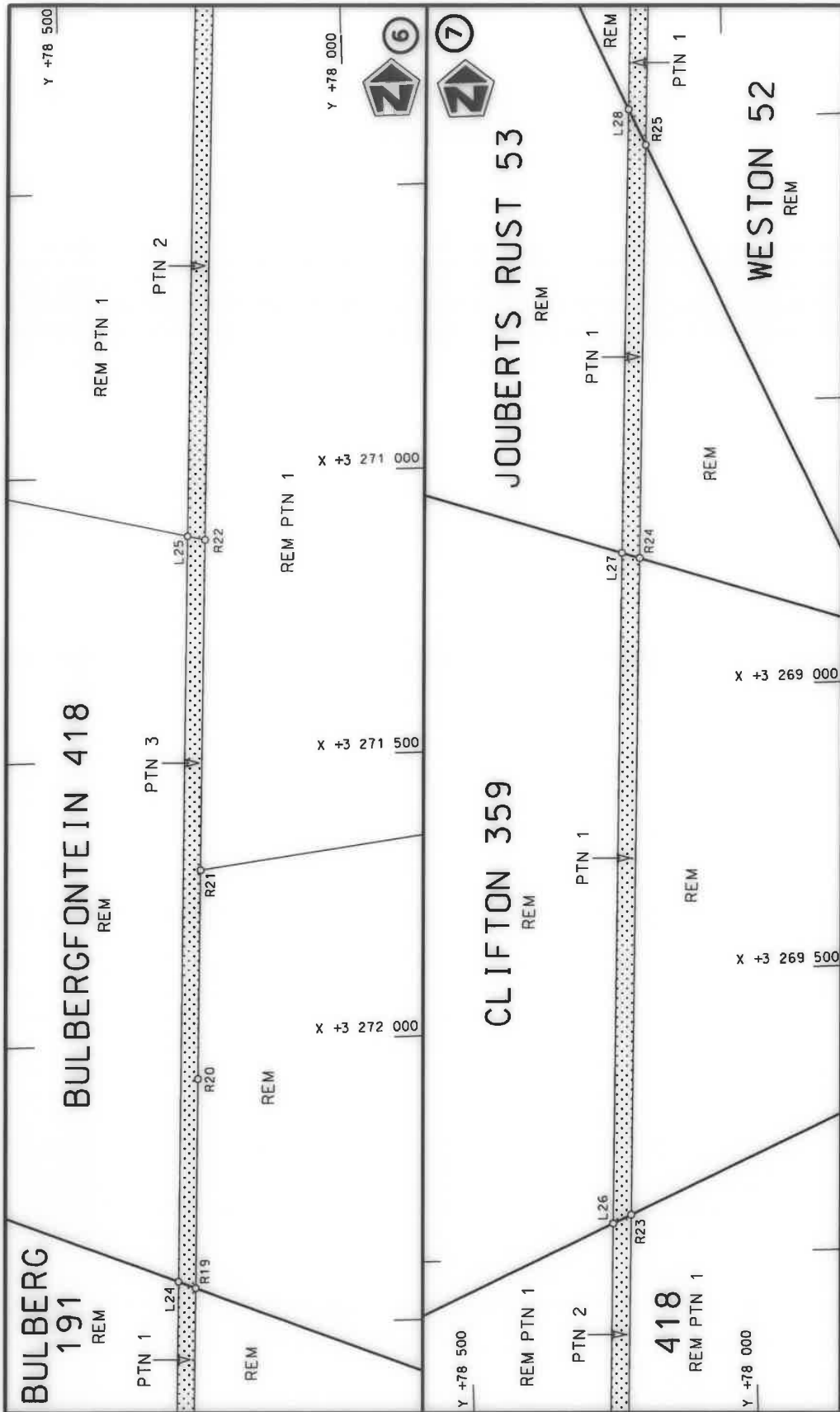
**(Nasionale Pad N6 Seksie 8: Reddersburg – R702 Interseksie)****MINISTER VAN VERVOER**



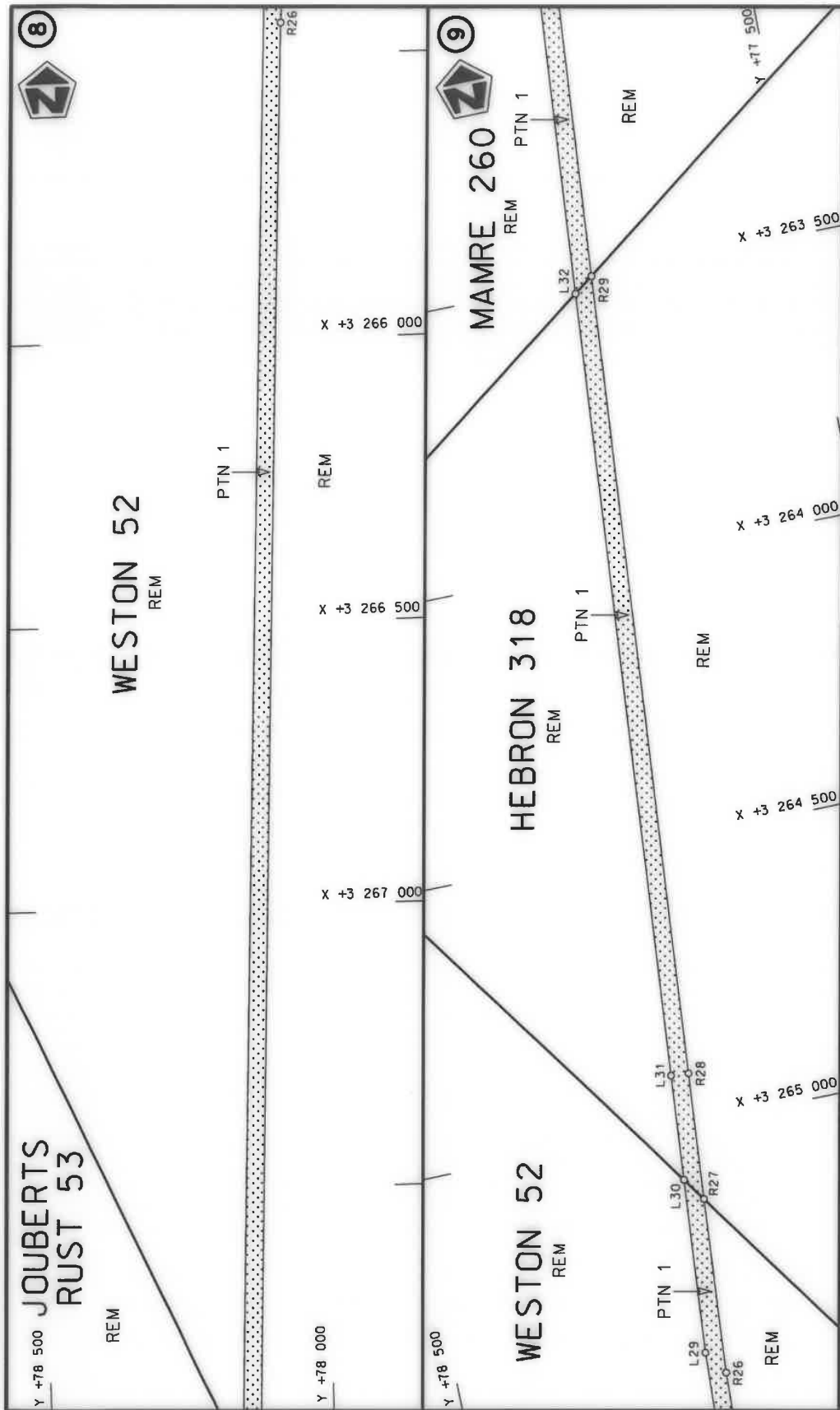
Die Suid Afrikaanse Nasionale Padagentskap MSB Bpk The South African National Roads Agency SOC Ltd	Die figuur getoon The figure shown		stelde padreserwe voor van 'n gedeelte represents the road reserve of a portion van Nasionale Roete N6 of National Route	Vel Sheet	van of	13
				Plan	P1114/18	
				8		

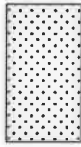


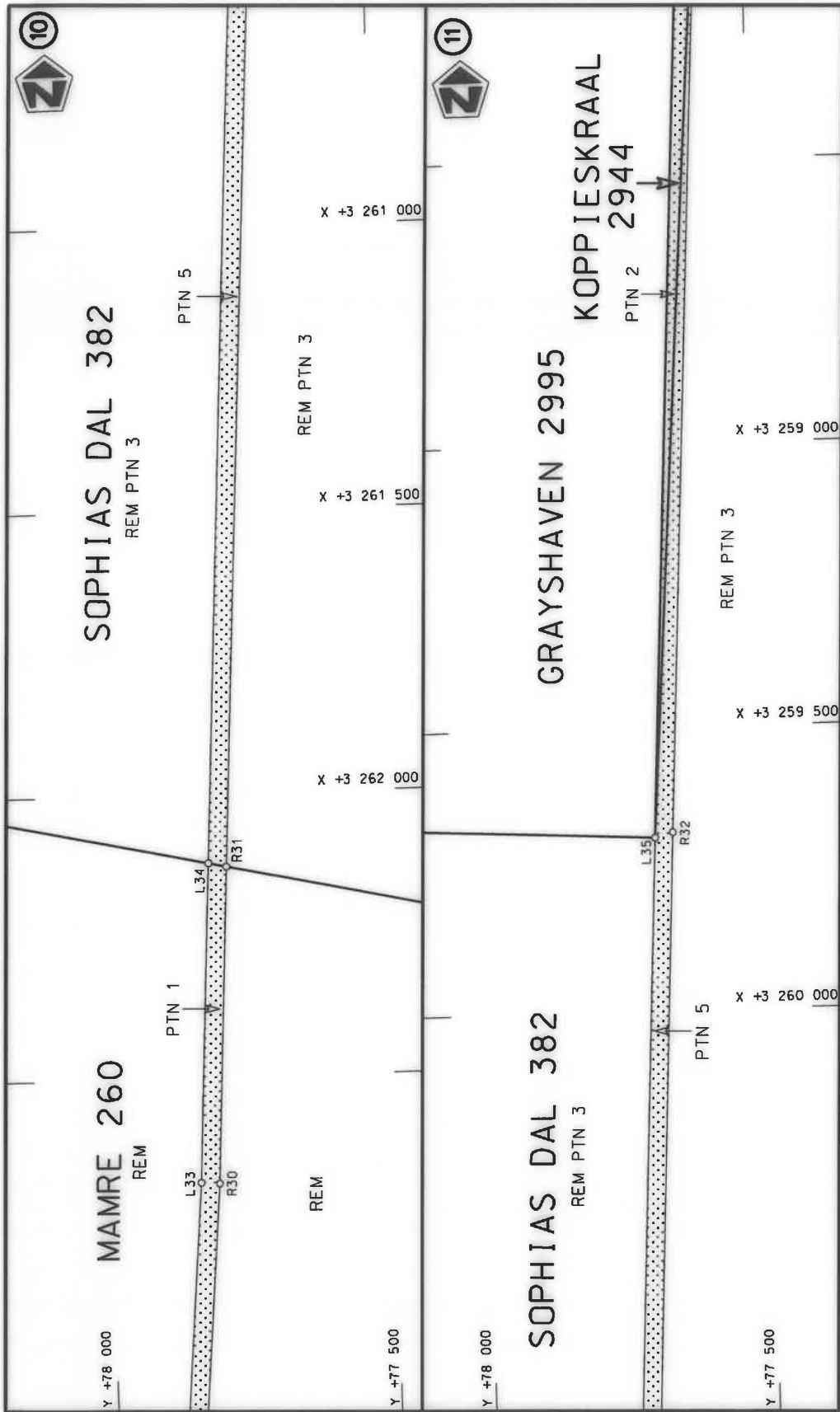
<p>Die Suid Afrikaanse Nasionale Padagentskap MSB Bpk The South African National Roads Agency SOC Ltd</p>	<p>Die figuur getoon The figure shown</p> 	<p>steil die padreserwe voor van 'n gedeelte represents the road reserve of a portion van Nasionale Roete N6 of National Route N6</p> <p>Seksie Section 8</p>	<p>Vel van Sheet 2 of 13</p> <p>Plan P1114/18</p>
---	---	---	---




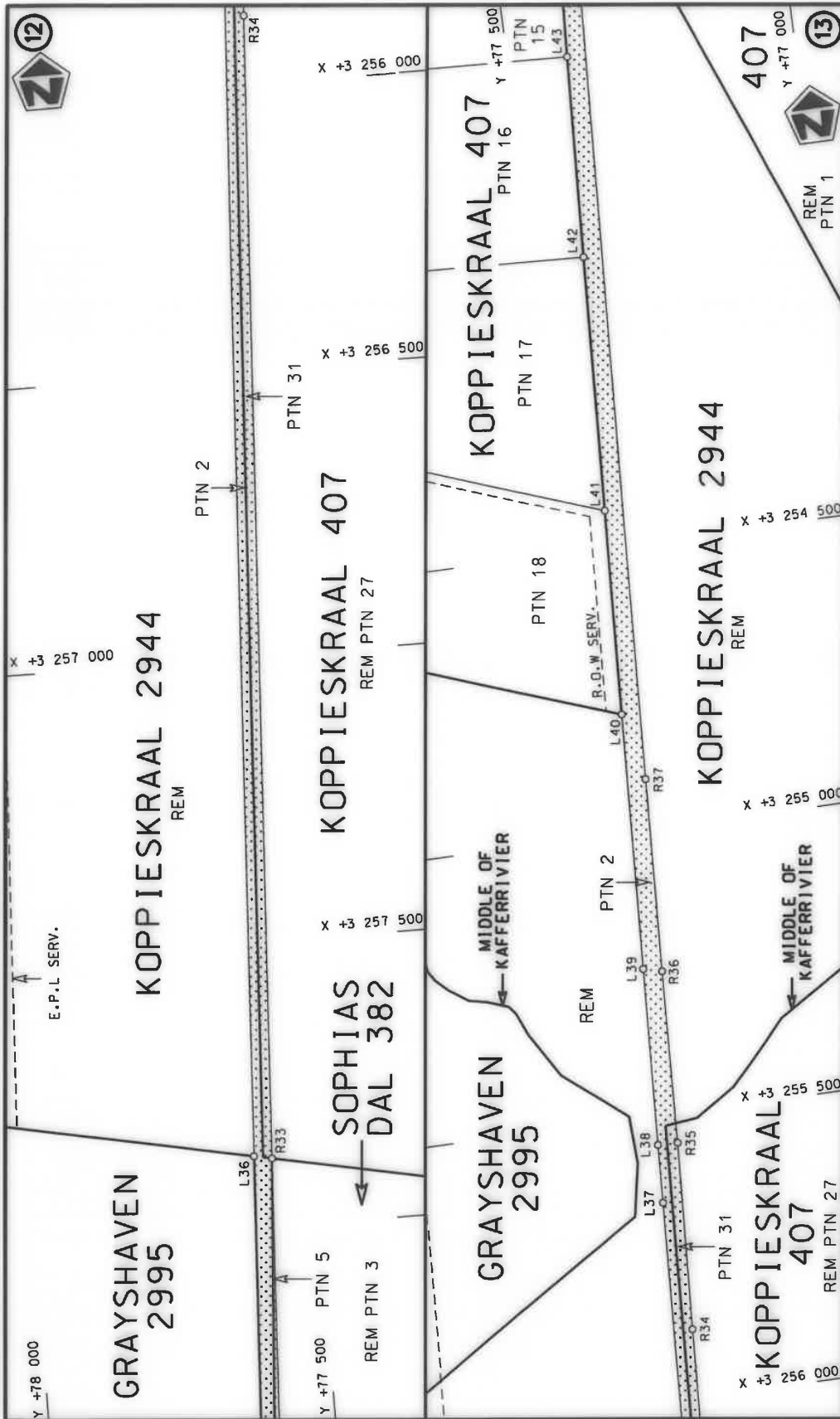
<p>Die Suid Afrikaanse Nasionale Padagentskap MSB Bpk The South African National Roads Agency SOC Ltd</p>	<p>Die figuur getoon The figure shown</p> 	<p>stel die padreserwe voor van 'n gedeelte represents the road reserve of a portion van Nasionale Roete N6 of National Route Seksie N6 Section</p>	<p>Vel Sheet 3 of 13 Plan P1114/18</p>
---	---	---	--



<p>Die Suid-Afrikaanse Nasionale Padagentskap MSB Bpk The South African National Roads Agency SOC Ltd</p>	<p>Die figuur getoon The figure shown</p> 	<p>stel die padreserwe voor van 'n gedeelte represents the road reserve of a portion van Nasionale Roete N6 of National Route</p>	<p>Vel Sheet 4 of 13 Plan P1114/18</p>
		8	

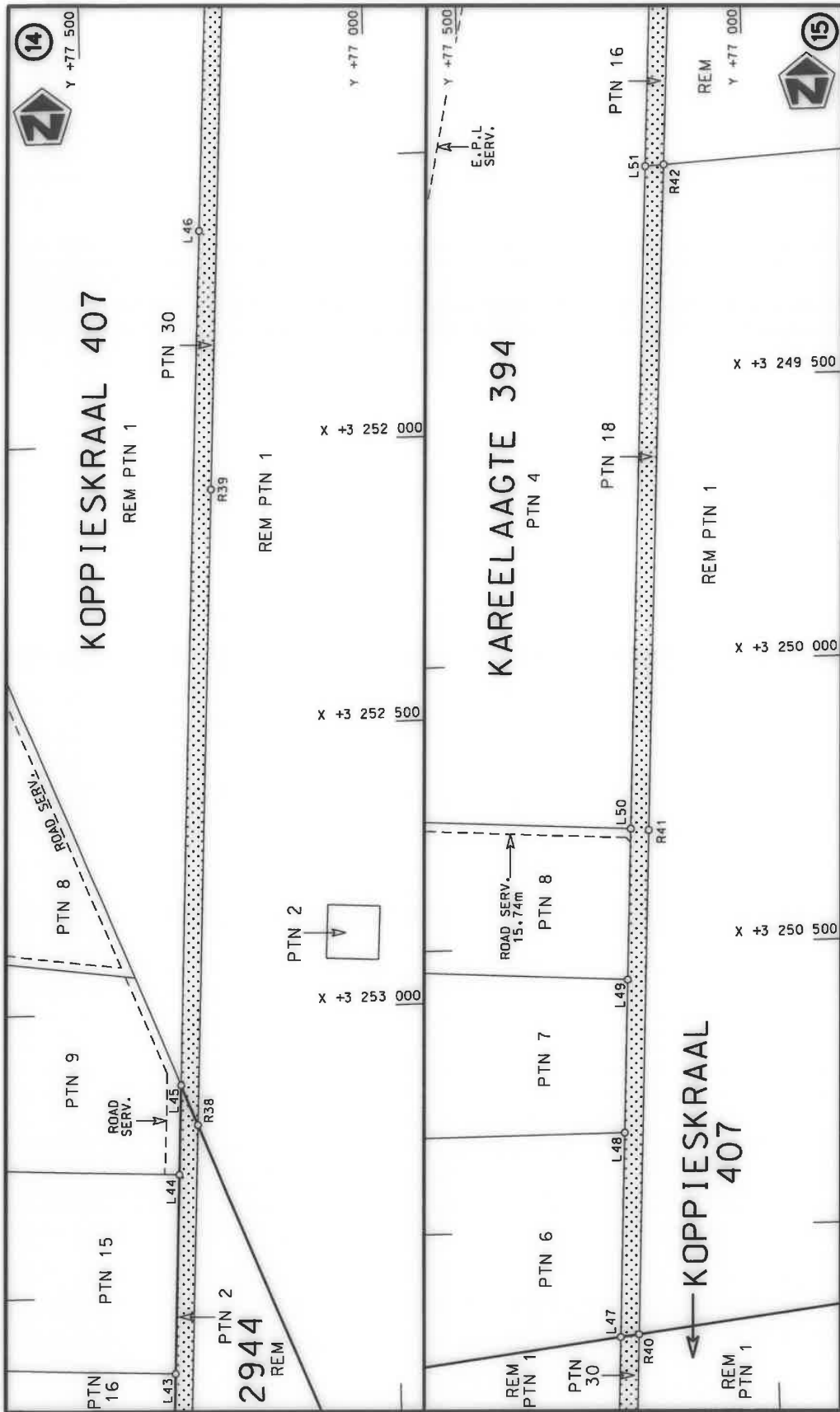


Die Suid Afrikaanse Nasionale Padagentskap WSB Bpk The South African National Roads Agency SOC Ltd	Die figuur getoon The figure shown		steldie padreserwe voor van 'n gedeelte represents the road reserve of a portion van Nasionale Roete N6 of National Route Section	8	Vel Sheet	5 of	13
	Plan				P1114/18		

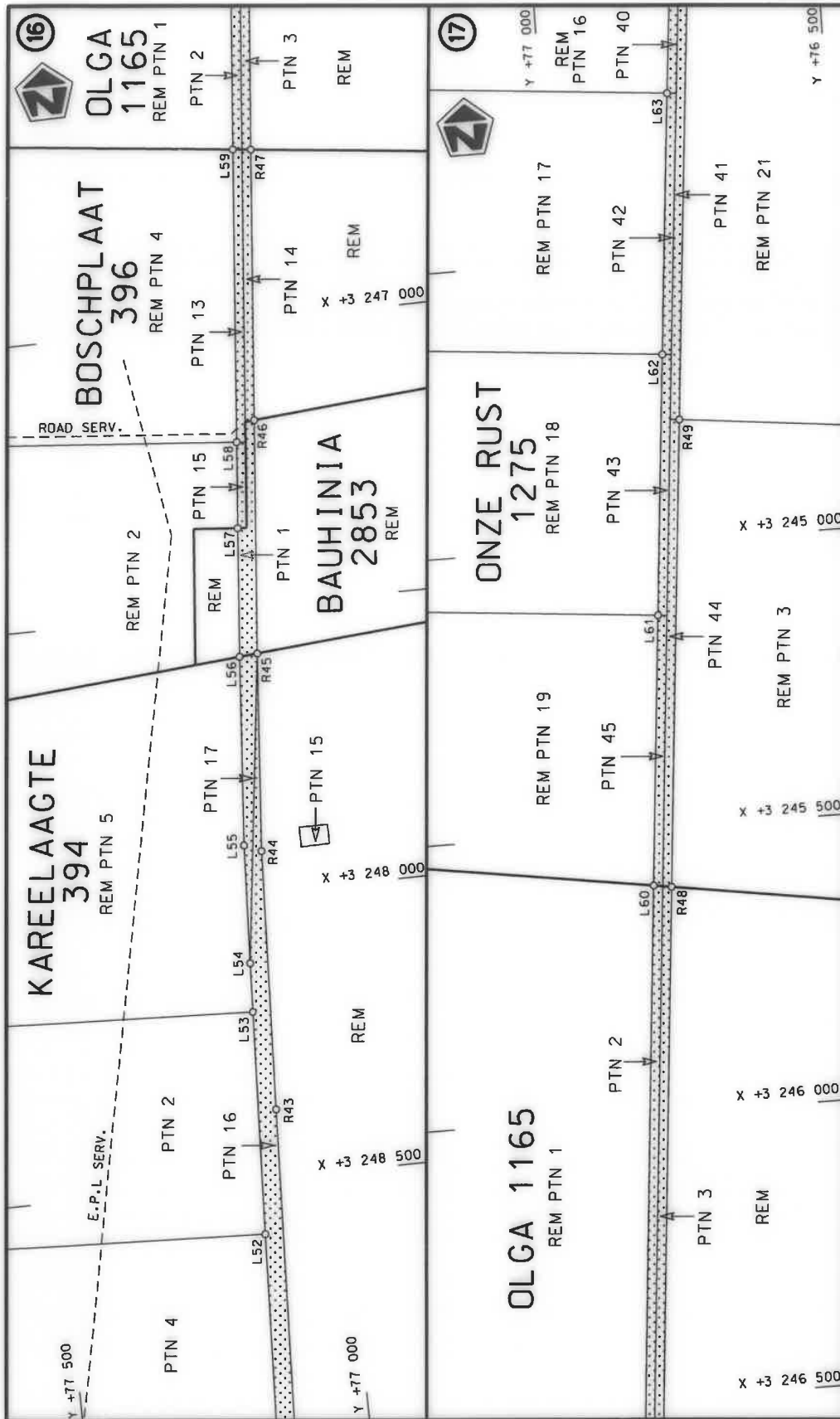



<p>Die Suid-Afrikaanse Nasionale Padagentskap MSB Bpk The South African National Roads Agency SOC Ltd</p>	<p>Die figuur getoon The figure shown</p>		<p>stelt die padreserwe voor van 'n gedeelte represents the road reserve of a portion van Nasionale Roete N6 of National Route</p>	<p>Vel Sheet 6 of 13 Plan P1114/18</p>
---	---	--	--	--

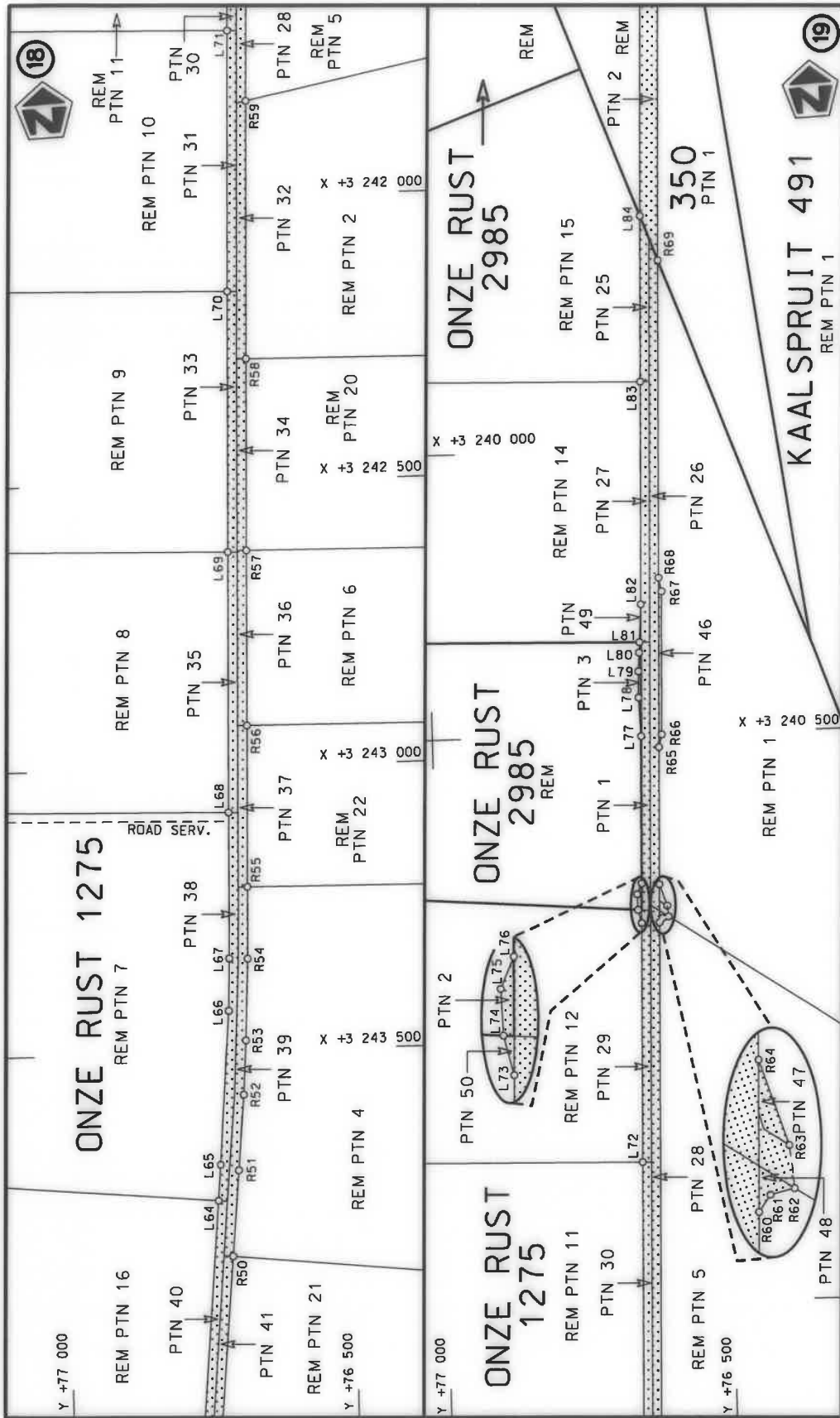




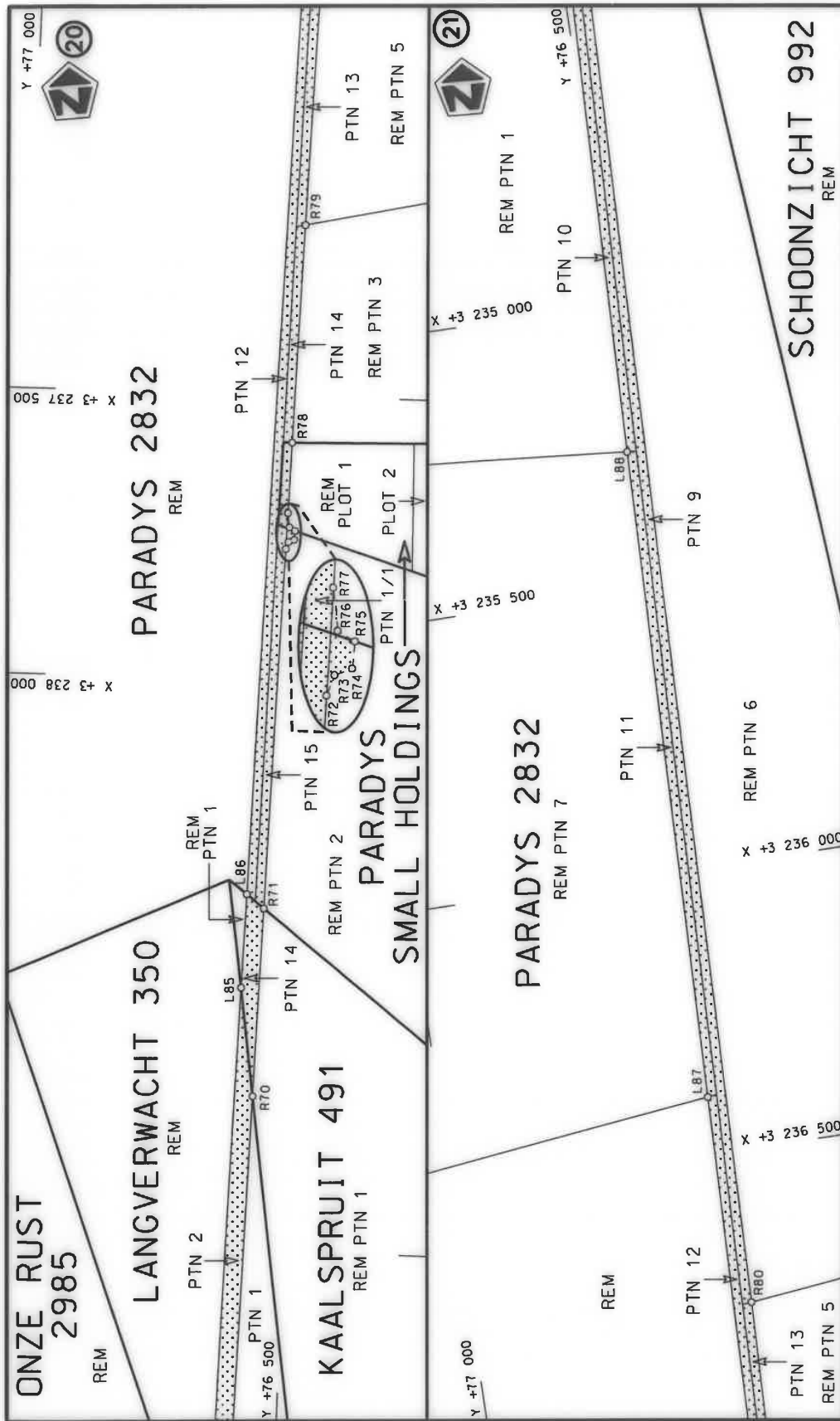
<p>Vel Sheet 7 of 13</p> <p>Plan P1114/18</p>	<p>stel die padreserwe voor van 'n gedeelte represents the road reserve of a portion van Nasionale Roete N6 Seksie Section of National Route</p> <p>Die figuur getoon The figure shown</p>	<p>Die Suid Afrikaanse Nasionale Padagentskap MSB Bpk The South African National Roads Agency SOC Ltd</p>
---	--	---



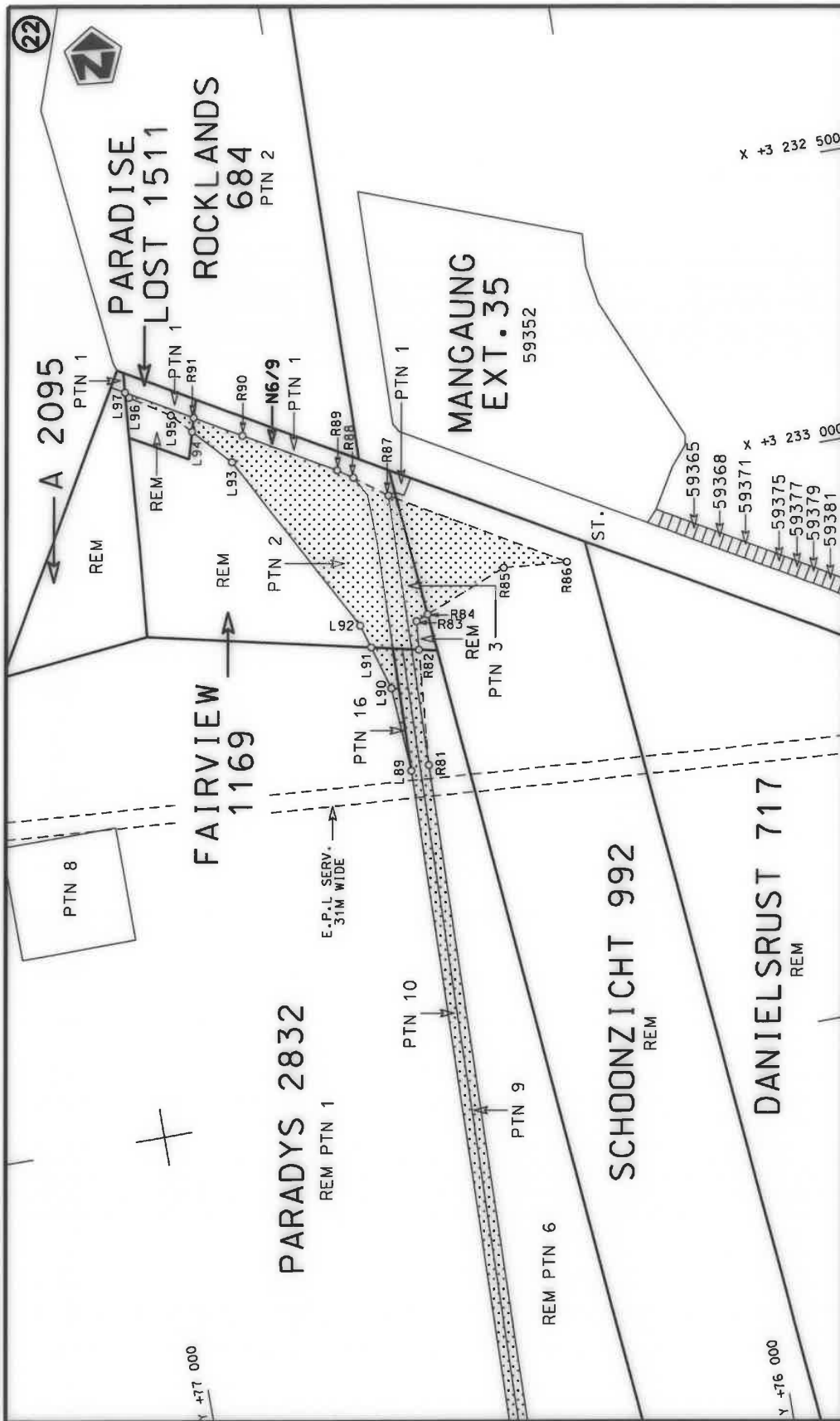
<p>Die Suid-Afrikaanse Nasionale Padagentskap MSB Bpk The South African National Roads Agency SOC Ltd</p>	<p>Die figuur getoon The figure shown</p>		<p>steldie padreserwe voor van 'n gedeelte represents the road reserve of a portion van Nasionale Roete N6 of National Route</p>	<p>Vel Sheet 8 of 13 Plan P1114/18</p>
---	---	---	--	--



Die Suid Afrikaanse Nasionale Padagentskap MSB Bpk The South African National Roads Agency SOC Ltd	Die figuur getoon The figure shown	stel die padreserwe voor van 'n gedeelte represents the road reserve of a portion van Nasionale Roete N6 of National Route N6	Vel Sheet 9 of 13
	Die figuur getoon The figure shown	Sektie Section N6	Plan P1114/18



<p>Die Suid Afrikaanse Nasionale Padagentskap MSB Bpk The South African National Roads Agency SOC Ltd</p>	<p>Die figuur getoon The figure shown</p>	<p>stel die padreserwe voor van 'n gedeelte represents the road reserve of a portion van Nasionale Roete N6 of National Route</p>	<p>Vel van Sheet 10 of 13</p>
<p>Die figuur getoon The figure shown</p>		<p>8</p>	<p>Plan P1114/18</p>



<p>Die Suid-Afrikaanse Nasionale Padagentskap MSB Bpk The South African National Roads Agency SOC Ltd</p>	<p>Die figuur getoon The figure shown</p>	<p>stel die padreserwe voor van 'n gedeelte represents the road reserve of a portion van Nasionale Roete N6 of National Route</p>	<p>Vel Sheet 11 of 13 Plan P1114/18</p>
<p>Die figuur getoon The figure shown</p>		<p>8</p>	<p>8</p>

PADRESERWE KOÖRDINATE / ROAD RESERVE CO-ORDINATES					
LINKERKANT/LEFT HAND SIDE			REGTERKANT/RIGHT HAND SIDE		
	Y	X	WG 27°	Y	X
L1	79 550.47	3 281 140.57		R1	79 521.19 3 281 159.02
L2	79 518.54	3 280 940.29		R2	79 489.62 3 280 958.51
L3	79 499.29	3 280 818.04		R3	79 474.83 3 280 865.82
L4	79 448.29	3 280 495.78		R4	79 421.26 3 280 528.59
L5	79 370.04	3 280 002.00		R5	79 249.63 3 279 440.21
L6	79 365.85	3 279 975.57		R6	78 988.18 3 277 598.73
L7	79 278.55	3 279 419.35		R7	78 896.58 3 276 953.34
L8	79 015.47	3 277 567.64		R8	78 840.65 3 276 560.71
L9	78 925.65	3 276 931.71		R9	78 763.35 3 276 033.59
L10	78 871.85	3 276 554.46		R10	78 700.44 3 275 612.29
L11	78 796.01	3 276 038.23		R11	78 423.11 3 273 754.79
L12	78 731.67	3 275 606.98		R12	78 375.24 3 273 434.48
L13	78 462.98	3 273 806.94		R13	78 361.23 3 273 330.65
L14	78 406.96	3 273 431.01		R14	78 354.71 3 273 269.82
L15	78 403.11	3 273 404.55		R15	78 350.45 3 273 224.23
L16	78 394.48	3 273 340.01		R16	78 344.64 3 273 149.18
L17	78 389.67	3 273 297.01		R17	78 341.56 3 273 100.06
L18	78 381.75	3 273 219.61		R18	78 339.11 3 273 041.85
L19	78 378.22	3 273 174.65		R19	78 314.60 3 272 432.60
L20	78 376.16	3 273 143.73		R20	78 299.84 3 272 063.90
L21	78 373.51	3 273 099.55		R21	78 284.93 3 271 696.16
L22	78 372.10	3 273 068.65		R22	78 261.20 3 271 114.95
L23	78 370.86	3 273 040.38		R23	78 213.11 3 269 928.27
L24	78 345.57	3 272 420.24		R24	78 166.04 3 268 771.78
L25	78 292.31	3 271 107.68		R25	78 136.40 3 268 045.31
L26	78 244.95	3 269 942.61		R26	78 030.66 3 265 443.83
L27	78 196.96	3 268 761.74		R27	78 007.55 3 265 134.90
L28	78 164.96	3 267 982.02		R28	77 989.83 3 264 911.55
L29	78 060.01	3 265 401.78		R29	77 876.09 3 263 497.30
L30	78 035.66	3 265 094.43		R30	77 810.52 3 262 687.52
L31	78 020.98	3 264 909.33		R31	77 783.27 3 262 128.88
L32	77 909.79	3 263 522.08		R32	77 663.55 3 259 685.66
L33	77 842.63	3 262 685.38		R33	77 574.35 3 257 879.84
L34	77 814.91	3 262 122.09		R34	77 475.64 3 255 879.50
L35	77 695.21	3 259 694.31		R35	77 456.80 3 255 551.48
L36	77 605.82	3 257 873.61		R36	77 443.85 3 255 249.64
L37	77 496.07	3 255 652.61		R37	77 427.78 3 254 911.95
L38	77 491.61	3 255 550.63		R38	77 342.89 3 253 201.30
L39	77 476.10	3 255 241.34		R39	77 287.49 3 252 081.64
L40	77 453.45	3 254 794.02		R40	77 243.42 3 251 187.77
L41	77 435.69	3 254 435.57		R41	77 199.68 3 250 297.90
L42	77 413.65	3 253 990.76		R42	77 141.18 3 249 126.08
L43	77 396.24	3 253 639.35		R43	77 104.79 3 248 379.19
L44	77 378.83	3 253 287.96		R44	77 082.18 3 247 925.83
L45	77 371.01	3 253 130.15		R45	77 053.43 3 247 580.58
L46	77 296.50	3 251 625.68		R46	77 016.27 3 247 173.42
L47	77 275.13	3 251 191.65		R47	76 973.29 3 246 701.97
L48	77 257.42	3 250 830.70		R48	76 873.07 3 245 604.08
L49	77 244.17	3 250 560.77		R49	76 798.44 3 244 788.26
L50	77 231.11	3 250 294.68		R50	76 713.72 3 243 860.05
L51	77 173.34	3 249 128.00		R51	76 699.70 3 243 709.24

Vel Sheet	12	Van of	13	P1114/18
-----------	----	--------	----	----------

PADRESERWE KOÖRDINATE / ROAD RESERVE CO-ORDINATES					
LINKERKANT/LEFT HAND SIDE			REGTERKANT/RIGHT HAND SIDE		
	Y	X	WG 27°	Y	X
L52	77 146.94	3 248 594.86		R52	76 687.57 3 243 576.39
L53	77 127.62	3 248 204.65		R53	76 681.35 3 243 481.32
L54	77 123.38	3 248 119.10		R54	76 674.32 3 243 337.67
L55	77 112.35	3 247 912.70		R55	76 671.21 3 243 211.65
L56	77 085.35	3 247 583.01		R56	76 663.96 3 242 928.37
L57	77 065.09	3 247 358.56		R57	76 656.67 3 242 621.19
L58	77 051.12	3 247 208.64		R58	76 648.40 3 242 284.91
L59	77 004.66	3 246 698.30		R59	76 637.33 3 241 833.06
L60	76 904.23	3 245 599.35		R60	76 612.70 3 240 831.69
L61	76 861.04	3 245 127.46		R61	76 607.41 3 240 824.21
L62	76 819.61	3 244 672.18		R62	76 596.60 3 240 821.62
L63	76 778.16	3 244 216.85		R63	76 598.47 3 240 802.64
L64	76 736.26	3 243 761.59		R64	76 611.06 3 240 764.74
L65	76 730.63	3 243 698.66		R65	76 605.16 3 240 523.80
L66	76 708.89	3 243 428.44		R66	76 599.56 3 240 501.66
L67	76 705.55	3 243 336.47		R67	76 593.24 3 240 250.54
L68	76 699.45	3 243 080.08		R68	76 597.89 3 240 226.69
L69	76 688.20	3 242 623.03		R69	76 584.25 3 239 669.72
L70	76 677.12	3 242 166.04		R70	76 561.14 3 238 728.69
L71	76 665.73	3 241 709.01		R71	76 553.10 3 238 398.87
L72	76 654.48	3 241 251.96		R72	76 537.63 3 237 768.25
L73	76 644.18	3 240 831.88		R73	76 533.54 3 237 756.01
L74	76 649.87	3 240 808.54		R74	76 523.23 3 237 751.81
L75	76 650.76	3 240 781.15		R75	76 522.11 3 237 736.12
L76	76 642.48	3 240 762.45		R76	76 532.50 3 237 730.28
L77	76 636.12	3 240 503.78		R77	76 536.08 3 237 705.18
L78	76 638.73	3 240 435.99		R78	76 533.06 3 237 581.77
L79	76 637.79	3 240 389.65		R79	76 523.68 3 237 200.55
L80	76 635.73	3 240 356.87		R80	76 513.08 3 236 766.90
L81	76 634.58	3 240 338.58		R81	76 431.52 3 233 438.46
L82	76 630.43	3 240 272.33		R82	76 413.98 3 233 236.26
L83	76 620.82	3 239 881.59		R83	76 409.66 3 233 186.37
L84	76 613.71	3 239 591.08		R84	76 388.57 3 233 177.95
L85	76 588.03	3 238 539.08		R85	76 244.06 3 233 120.22
L86	76 583.79	3 238 374.78		R86	76 132.71 3 233 129.37
L87	76 535.45	3 236 399.48		R87	76 419.79 3 232 961.21
L88	76 507.69	3 235 259.73		R88	76 475.04 3 232 919.72
L89	76 463.21	3 233 443.09		R89	76 500.37 3 232 902.00
L90	76 472.12	3 233 294.50		R90	76 653.94 3 232 813.46
L91	76 494.90	3 233 218.10		R91	76 733.29 3 232 767.65
L92	76 507.14	3 233 177.06			
L93	76 679.32	3 232 856.10			
L94	76 740.32	3 232 791.07			
L95	76 772.85	3 232 756.39			
L96	76 839.61	3 232 713.02			
L97	76 845.45	3 232 702.86			

Vel  
Sheet

13

Van  
of

13

P1114/18