

DEPARTMENT OF TRANSPORT

NO. 906

21 September 2021

**THE SOUTH AFRICAN NATIONAL ROADS
AGENCY SOC LIMITED**

Registration No: 1998/009584/30

DECLARATION AMENDMENT OF NATIONAL ROAD N6 SECTION 9

AMENDMENT OF DECLARATION No. 1173 OF 2008.

By virtue of Section 40 (1)(b) of The South African National Roads Agency Limited and National Roads Act, 1998 (Act No. 7 of 1998), I hereby amend I hereby amend Declaration No. 1173 of 2008, the section of the route from points L84 and R74 on sheet 11 of Plan No. P679/08 up to its end, by substituting it with the accompanying sheets 1 to 3 of Plan No. P1115/18.

(National Road N6 Section 9: R702 Intersection – Bloemfontein (N1 Intersection))

MINISTER OF TRANSPORT

DEPARTEMENT VAN VERVOER

NO. 906

21 September 2021

**DIE SUID-AFRIKAANSE NASIONALE
PADAGENTSKAP MSB BEPERK**

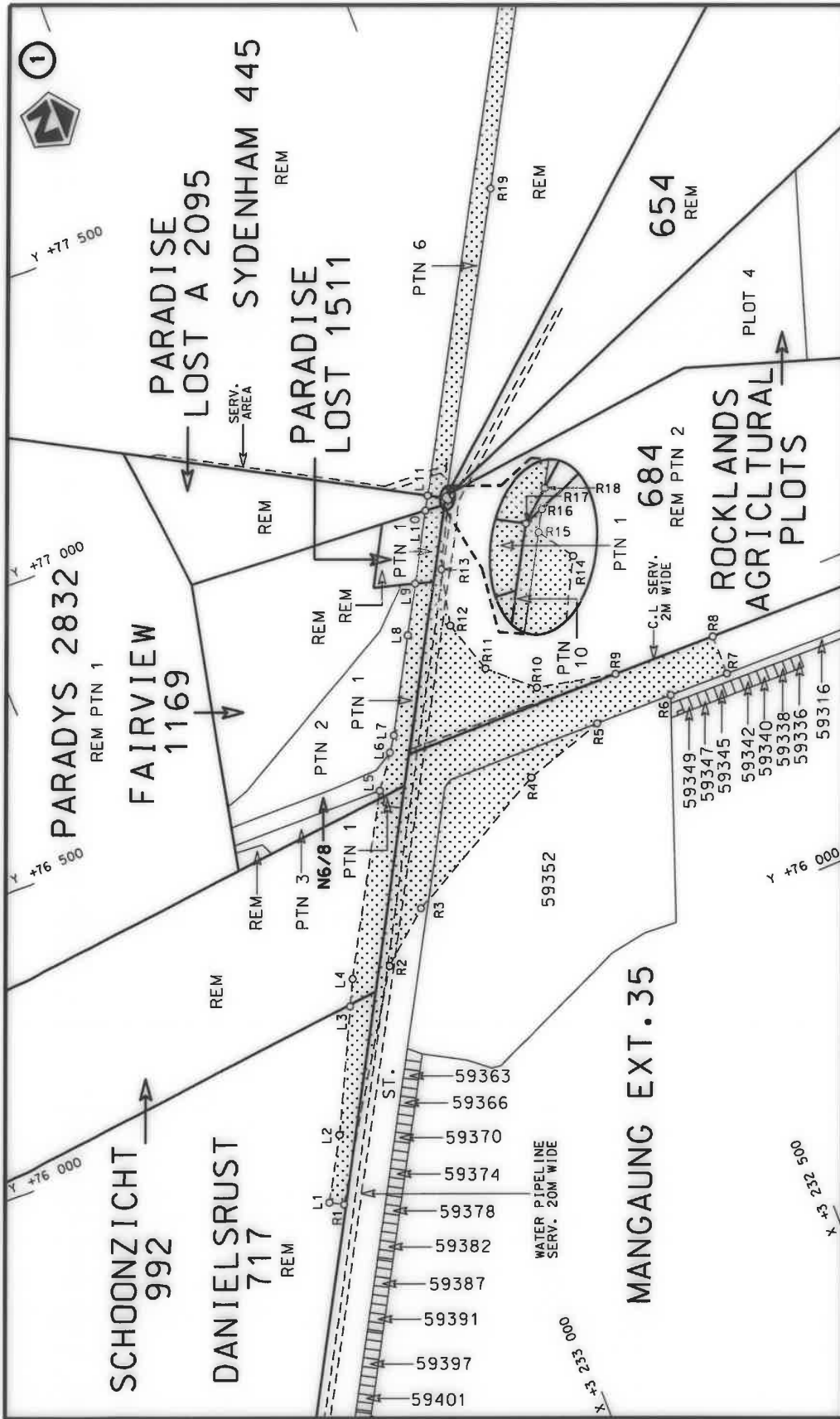
Registrasie No: 1998/009584/30

VERKLARING WYSIGING VAN NASIONALE PAD N6 SEKSIE 9

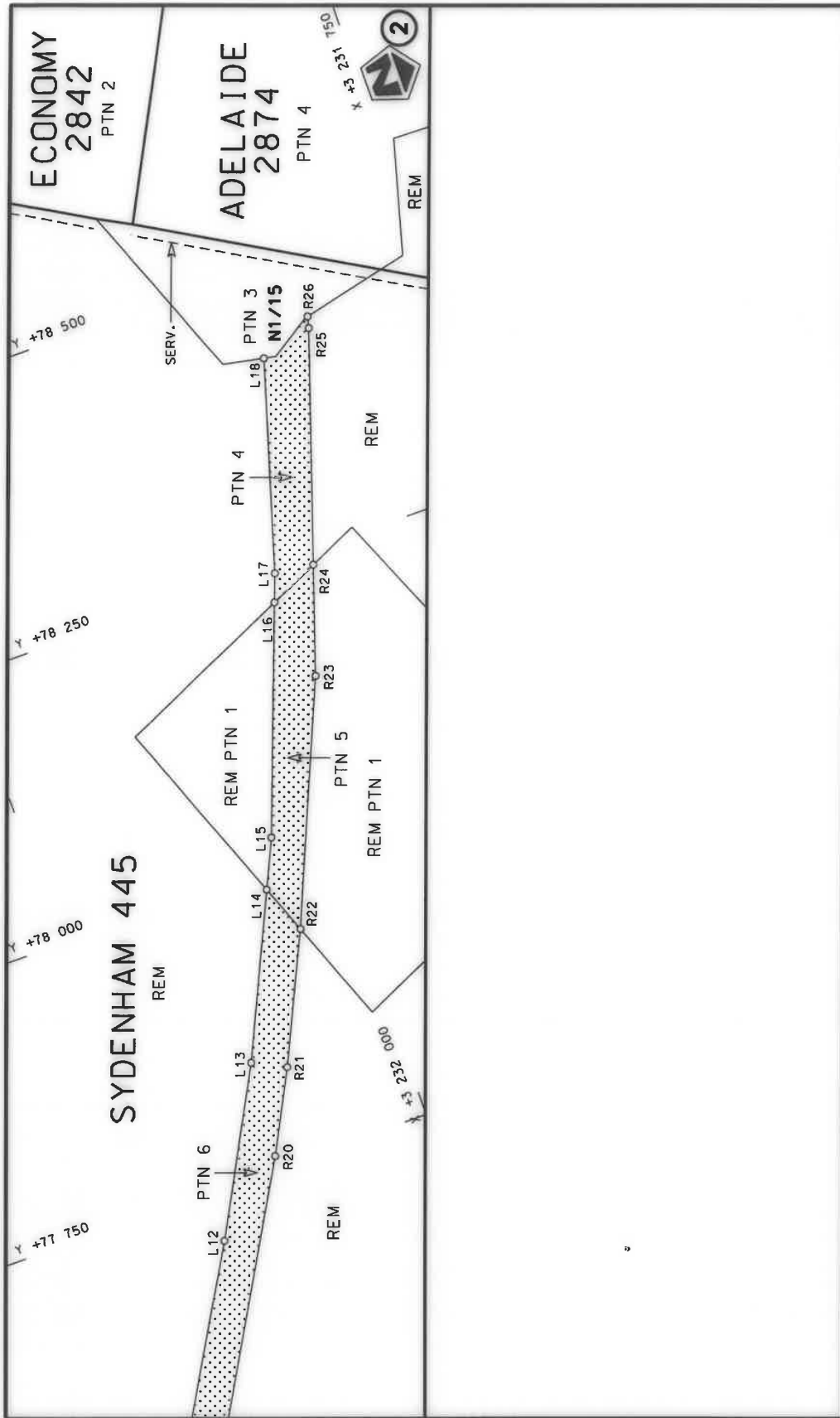
WYSIGING VAN VERKLARING No. 1173 VAN 2008.


Kragtens Artikel 40(1)(b) van die Wet op die Suid-Afrikaanse Nasionale Padagentskap Beperk en op Nasionale Paaie, 1998 (Wet No. 7 van 1998), wysig ek hiermee Verklaring No. 1173 van 2008, die gedeelte van die roete vanaf punte L84 en R74 op vel 11 van Plan No. P679/08 tot by die einde, deur dit te vervang met bygaande velle 1 tot 3 van Plan No. P1115/18.

(Nasionale Pad N6 Seksie 9: R702 Interseksie – Bloemfontein (N1 Interseksie))**MINISTER VAN VERVOER**



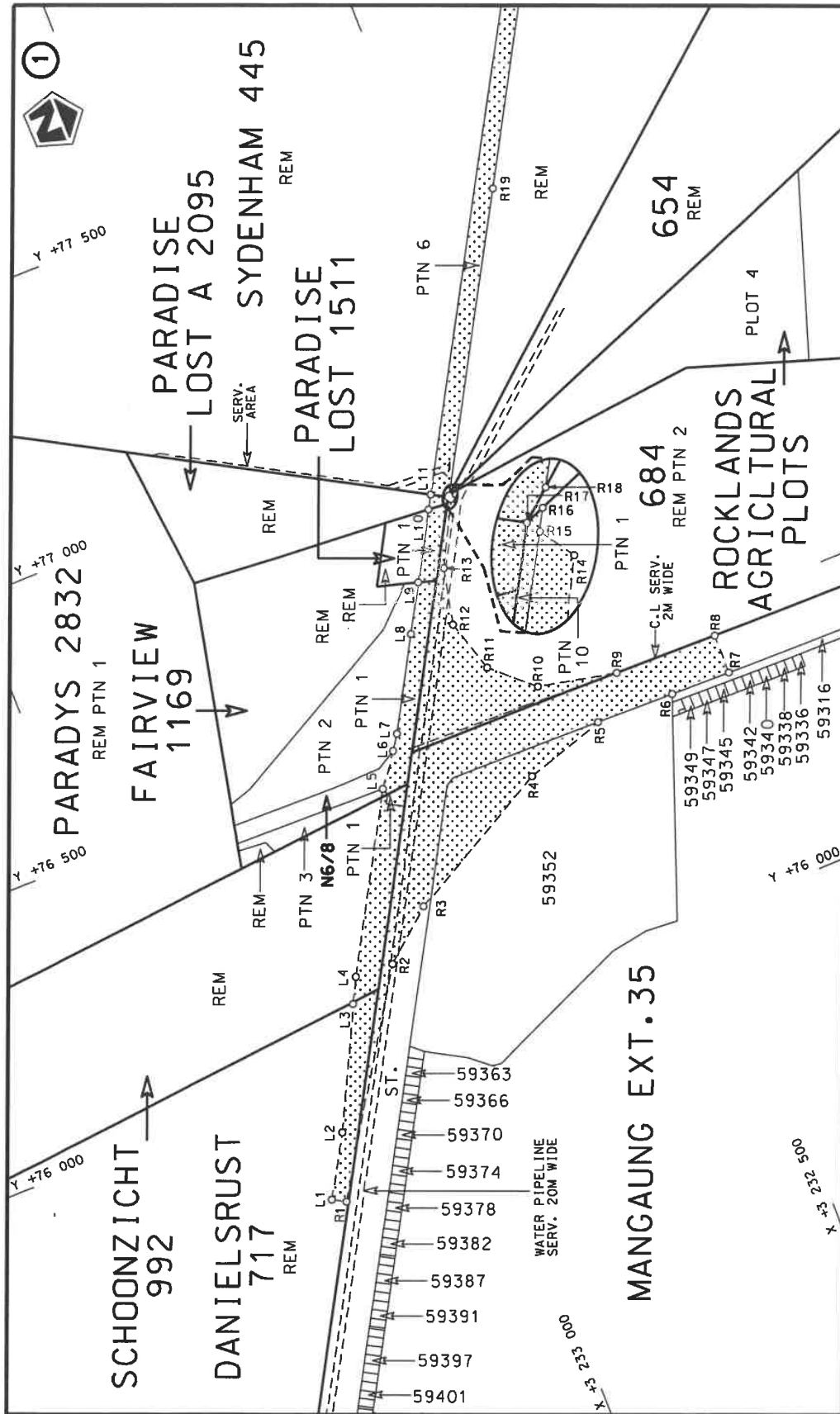
<p>Die Suid Afrikaanse Nasionale Padagentskap MSB Bpk The South African National Roads Agency SOC Ltd</p>	<p>Die figuur getoon The figure shown</p>	<p>steeldie padreserwe voor van 'n gedeelte represents the road reserve of a portion van Nasionale Roete N6 of National Route</p>	<p>Vel Sheet 1 of 3 Plan P1115/18</p>
		<p>Seksie Section 9</p>	



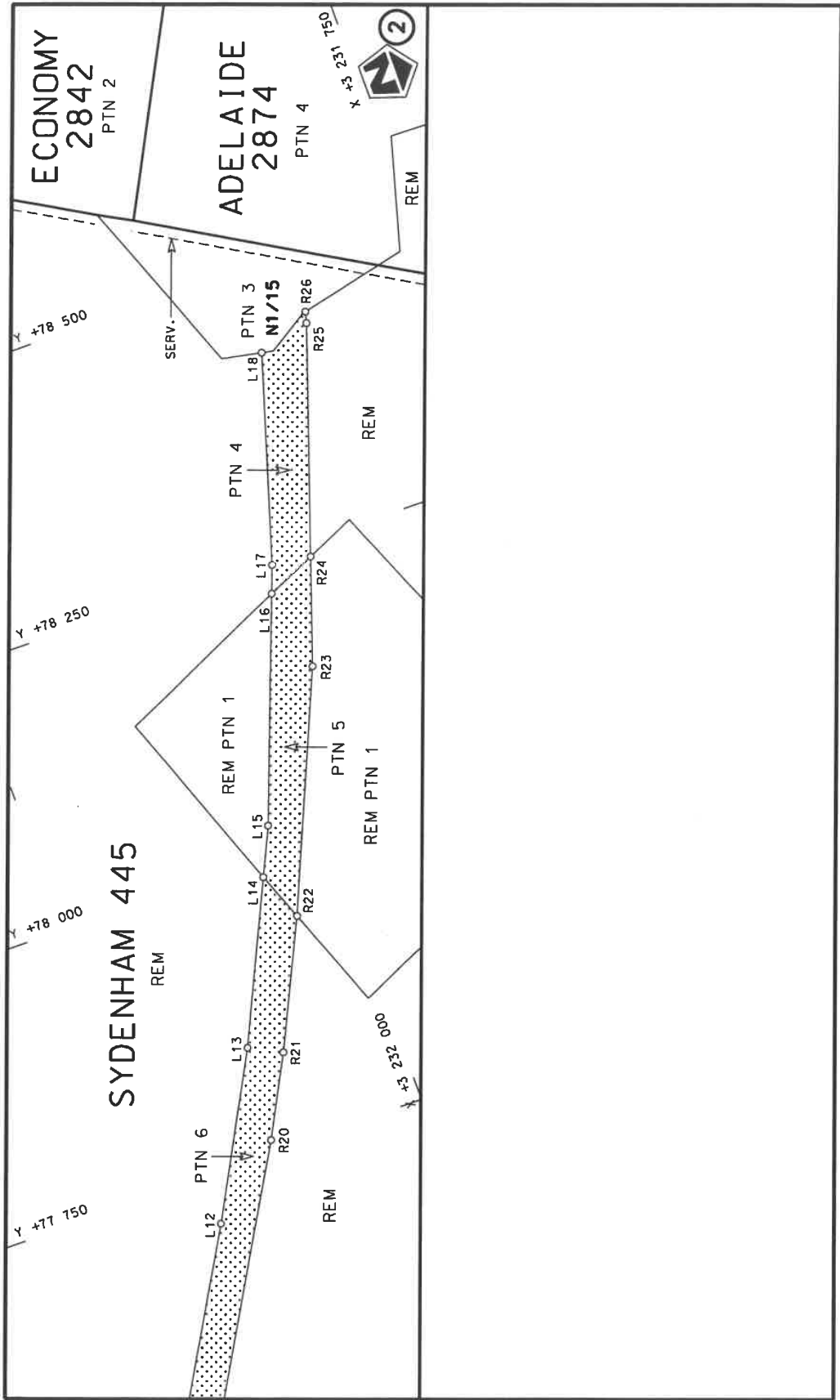
<p>Die Suid-Afrikaanse Nasionale Padagentskap MSB Bpk The South African National Roads Agency SOC Ltd</p>	<p>Die figuur getoon The figure shown</p> 	<p>steldie padreserwe voor van 'n gedeelte represents the road reserve of a portion van Nasionale Roete N6 of National Route</p> <p>9</p>	<p>Vel Sheet 2 of 3 Plan P1115/18</p>
---	---	---	---

PADRESERWE KOÖRDINATE / ROAD RESERVE CO-ORDINATES					
LINKERKANT/LEFT HAND SIDE			REGTERKANT/RIGHT HAND SIDE		
	Y	X	WG 27°	Y	X
L1	75 782.86	3 233 314.66		R1	75 770.12 3 233 292.69
L2	75 887.64	3 233 253.92		R2	76 129.14 3 233 061.19
L3	76 088.70	3 233 151.74		R3	76 201.26 3 232 971.91
L4	76 132.71	3 233 129.37		R4	76 341.99 3 232 708.06
L5	76 419.79	3 232 961.21		R5	76 385.57 3 232 565.36
L6	76 475.04	3 232 919.72		R6	76 382.78 3 232 427.39
L7	76 500.37	3 232 902.00		R7	76 380.63 3 232 321.66
L8	76 653.94	3 232 813.46		R8	76 450.24 3 232 320.49
L9	76 733.29	3 232 767.65		R9	76 453.66 3 232 502.56
L10	76 845.45	3 232 702.86		R10	76 484.34 3 232 639.80
L11	76 868.24	3 232 689.66		R11	76 549.45 3 232 710.65
L12	77 705.76	3 232 203.79		R12	76 642.35 3 232 738.95
L13	77 845.01	3 232 128.79		R13	76 739.47 3 232 716.17
L14	77 983.32	3 232 064.70		R14	76 847.25 3 232 659.08
L15	78 025.00	3 232 045.39		R15	76 851.46 3 232 661.85
L16	78 218.20	3 231 973.34		R16	76 853.19 3 232 660.85
L17	78 242.15	3 231 964.40		R17	76 852.53 3 232 662.55
L18	78 422.98	3 231 910.22		R18	76 854.70 3 232 659.97
				R19	77 325.95 3 232 386.96
				R20	77 760.69 3 232 136.63
				R21	77 830.57 3 232 100.34
				R22	77 940.66 3 232 048.28
				R23	78 145.24 3 231 961.01
				R24	78 237.69 3 231 930.05
				R25	78 434.39 3 231 864.12
				R26	78 444.28 3 231 861.66

Vel Sheet	3	Van of	3	P1115/18
--------------	---	-----------	---	----------



Die Suid Afrikaanse Nasionale Padagentskap MSB Bpk The South African National Roads Agency SOC Ltd	Die figuur getoon The figure shown	steeldie padreserwe voor van 'n gedeelte represents the road reserve of a portion van Nasionale Roete N6 of National Route	Vel Sheet 1 of 3 Plan P1115/18
---	---------------------------------------	---	--------------------------------------



<p>Die Suid-Afrikaanse Nasionale Padagentskap MSB Bpk The South African National Roads Agency SOC Ltd</p>	<p>Die figuur getoon The figure shown</p> 	<p>steldie padreserwe voor van 'n gedeelte represents the road reserve of a portion van Nasionale Roete N6 Seksie of National Route Section</p>	<p>Vel. Sheet 2 of 3 Plan P1115/18</p>
---	---	---	--

PADRESERWE KOÖRDINATE / ROAD RESERVE CO-ORDINATES					
LINKERKANT/LEFT HAND SIDE			REGTERKANT/RIGHT HAND SIDE		
	Y	X	WG 27°	Y	X
L1	75 782.86	3 233 314.66		R1	75 770.12 3 233 292.69
L2	75 887.64	3 233 253.92		R2	76 129.14 3 233 061.19
L3	76 088.70	3 233 151.74		R3	76 201.26 3 232 971.91
L4	76 132.71	3 233 129.37		R4	76 341.99 3 232 708.06
L5	76 419.79	3 232 961.21		R5	76 385.57 3 232 565.36
L6	76 475.04	3 232 919.72		R6	76 382.78 3 232 427.39
L7	76 500.37	3 232 902.00		R7	76 380.63 3 232 321.66
L8	76 653.94	3 232 813.46		R8	76 450.24 3 232 320.49
L9	76 733.29	3 232 767.65		R9	76 453.66 3 232 502.56
L10	76 845.45	3 232 702.86		R10	76 484.34 3 232 639.80
L11	76 868.24	3 232 689.66		R11	76 549.45 3 232 710.65
L12	77 705.76	3 232 203.79		R12	76 642.35 3 232 738.95
L13	77 845.01	3 232 128.79		R13	76 739.47 3 232 716.17
L14	77 983.32	3 232 064.70		R14	76 847.25 3 232 659.08
L15	78 025.00	3 232 045.39		R15	76 851.46 3 232 661.85
L16	78 218.20	3 231 973.34		R16	76 853.19 3 232 660.85
L17	78 242.15	3 231 964.40		R17	76 852.53 3 232 662.55
L18	78 422.98	3 231 910.22		R18	76 854.70 3 232 659.97
				R19	77 325.95 3 232 386.96
				R20	77 760.69 3 232 136.63
				R21	77 830.57 3 232 100.34
				R22	77 940.66 3 232 048.28
				R23	78 145.24 3 231 961.01
				R24	78 237.69 3 231 930.05
				R25	78 434.39 3 231 864.12
				R26	78 444.28 3 231 861.66

Vel Sheet	3	Van of	3	P1115/18
--------------	---	-----------	---	----------