

DEPARTMENT OF TRANSPORT

NO. 903

21 September 2021

**THE SOUTH AFRICAN NATIONAL ROADS
AGENCY SOC LIMITED**

Registration No: 1998/009584/30

DECLARATION AMENDMENT OF NATIONAL ROAD N8 SECTION 10

AMENDMENT OF DECLARATION No. 458 OF 2009.

By virtue of Section 40 (1)(b) of The South African National Roads Agency Limited and National Roads Act, 1998 (Act No. 7 of 1998), I hereby amend Declaration No. 458 of 2009 by substituting it in its entirety, with the accompanying sheets 1 to 25 of Plan No. P1147/19.

(National Road N8 Section 10: Petrusburg – Bloemfontein)**MINISTER OF TRANSPORT**

DEPARTEMENT VAN VERVOER

NO. 903

21 September 2021

**DIE SUID-AFRIKAANSE NASIONALE
PADAGENTSKAP MSB BEPERK**

Registrasie No: 1998/009584/30

VERKLARING WYSIGING VAN NASIONALE PAD N8 SEKSIE 10

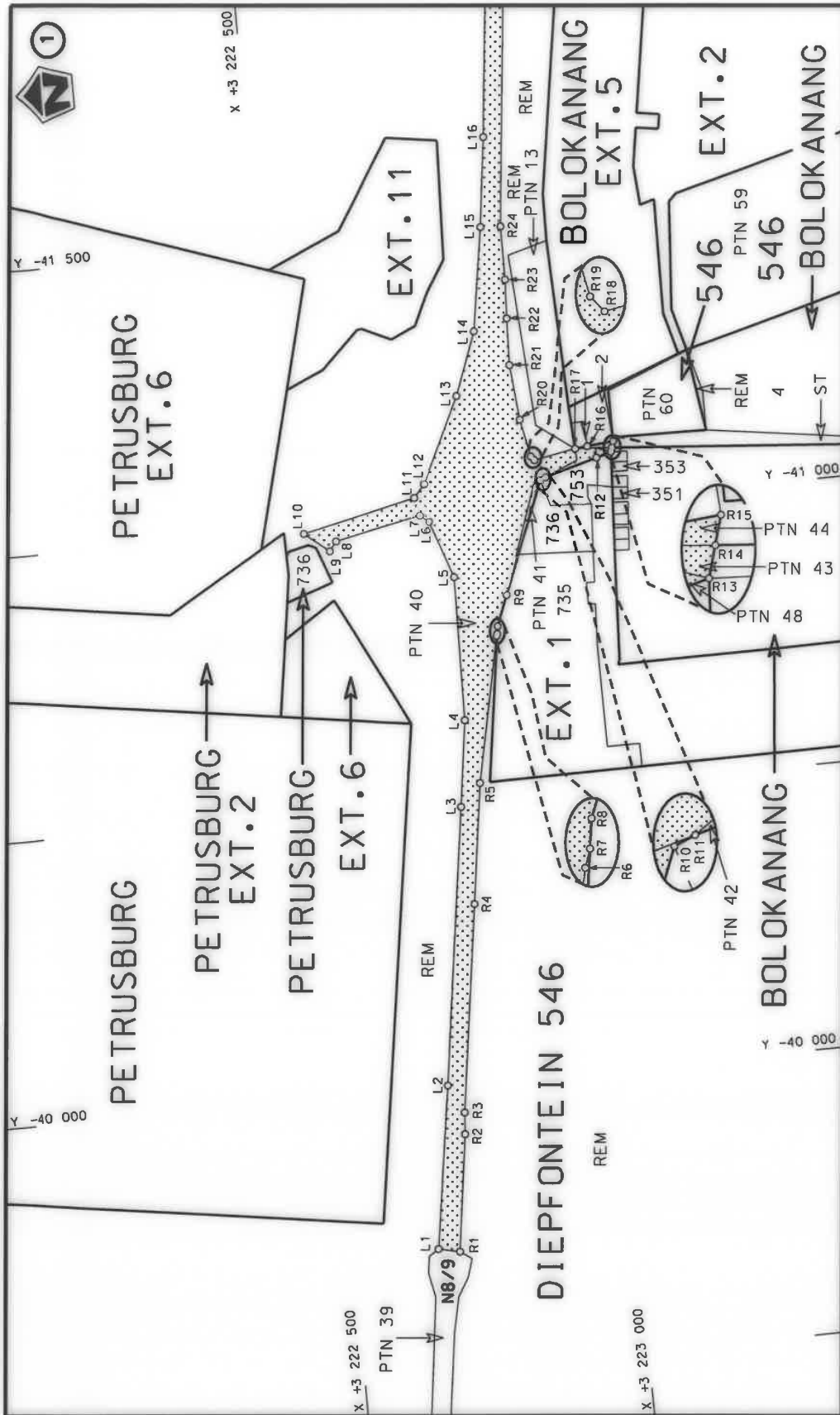
WYSIGING VAN VERKLARING No. 458 VAN 2009.


Kragtens Artikel 40(1)(b) van die Wet op die Suid-Afrikaanse Nasionale Padagentskap Beperk en op Nasionale Paaie, 1998 (Wet No. 7 van 1998), wysig ek hiermee Verklaring No. 458 van 2009 deur dit in sy geheel te vervang, met bygaande velle 1 tot 25 van Plan No. P1147/19.

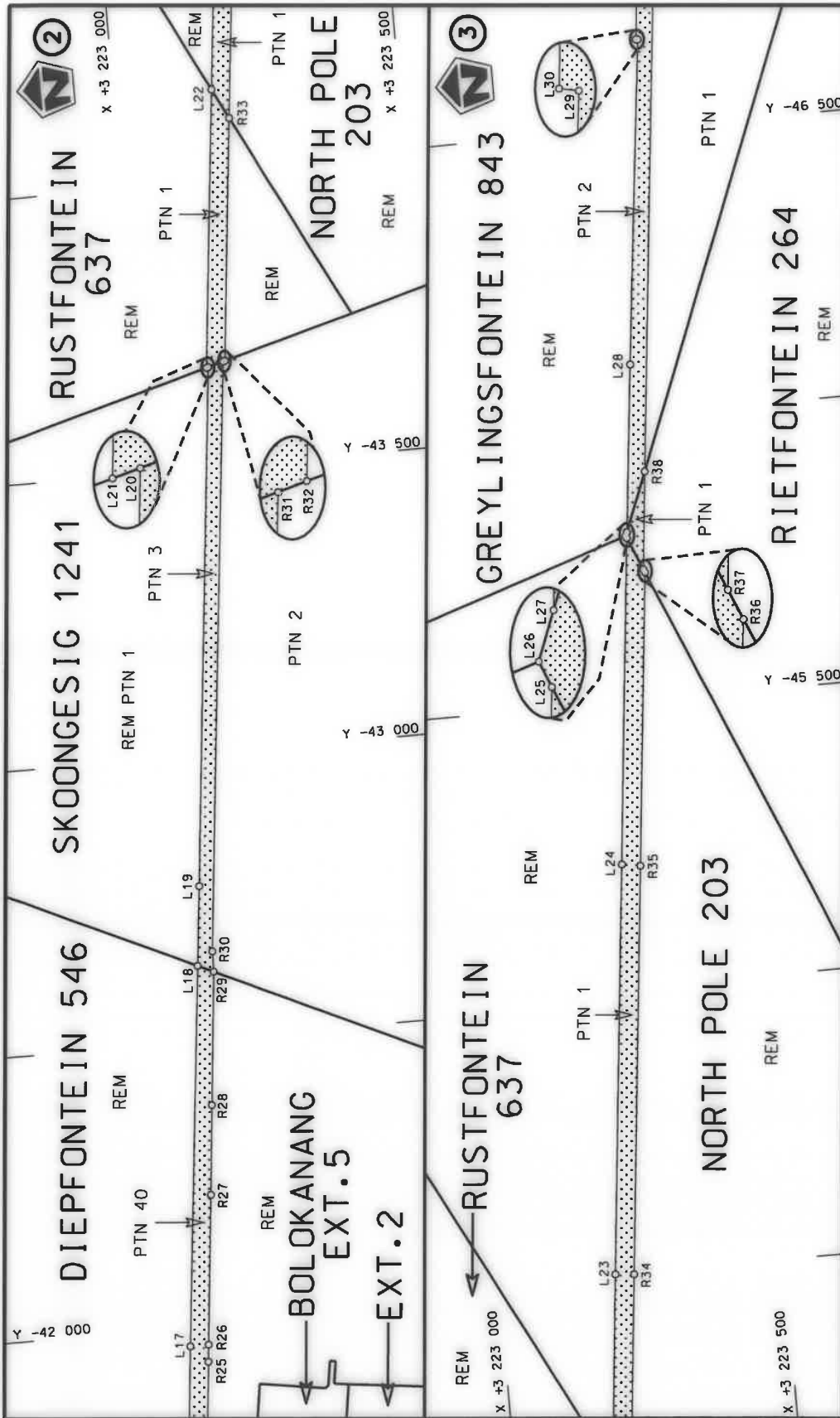
(Nasionale Pad N8 Seksie 10: Petrusburg – Bloemfontein)



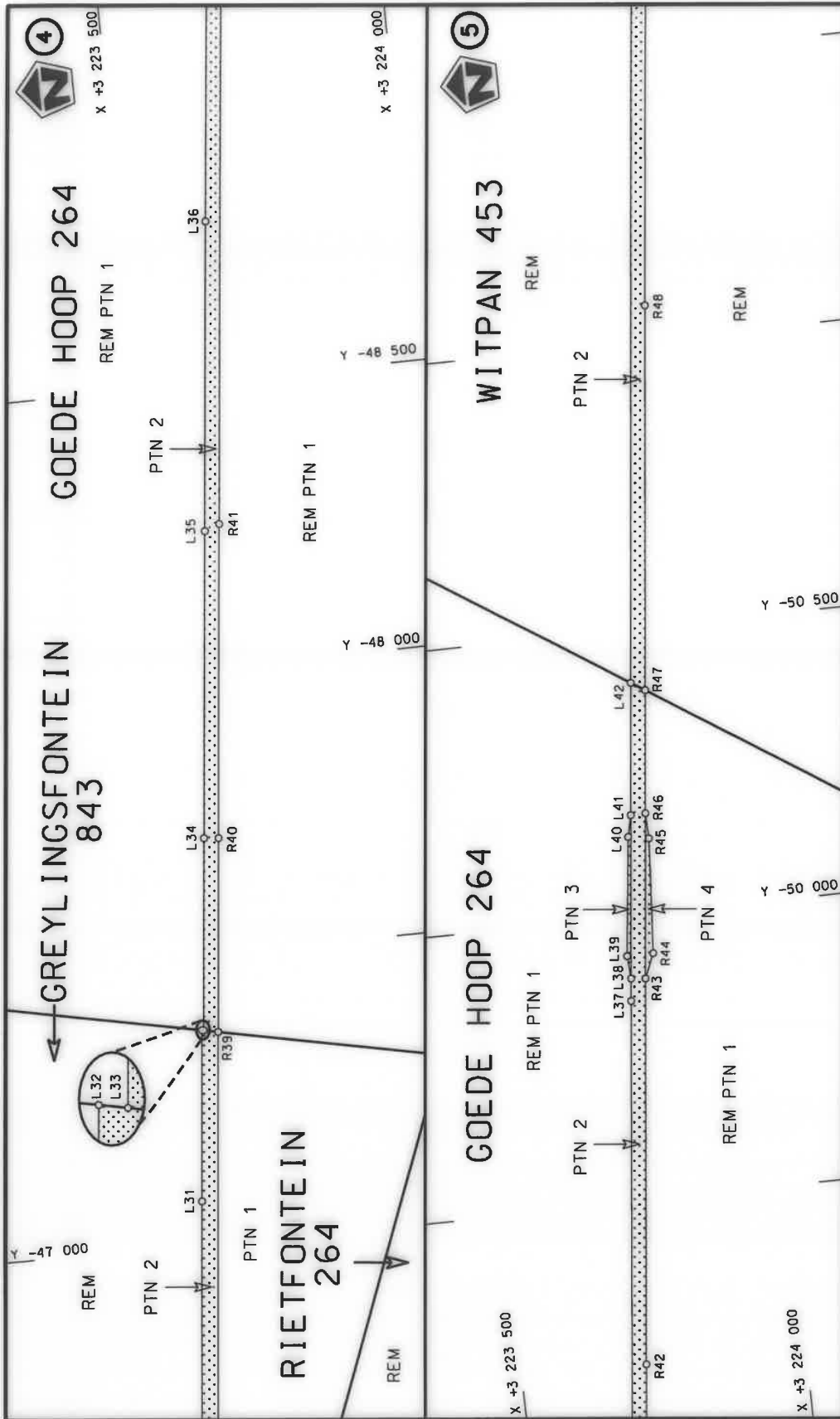
MINISTER VAN VERVOER



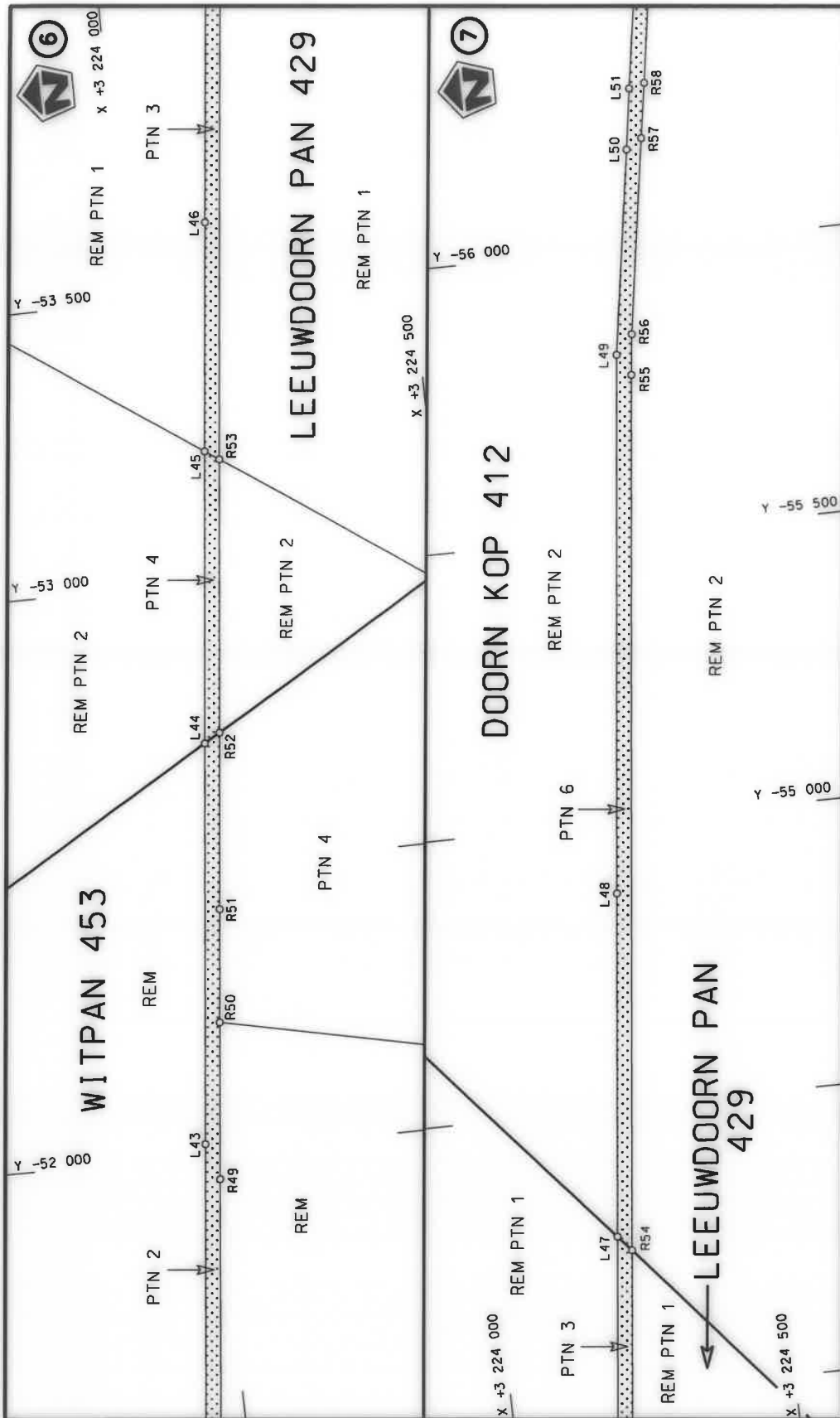
| | | | | |
|---|---------------------------------------|---|---|-------------------|
| Die Suid Afrikaanse Nasionale Padagentenskap MSB Bpk The South African National Roads Agency SOC Ltd | Die figuur getoon The figure shown |  | stelde podreserwe voor van 'n gedeelte represents the road reserve of a portion van Nasionale Roete N8 of National Route | |
| | | | 10 | Seksie Section |
| | | | Vel Sheet | 1 of |
| | | | Plan | P1147/19 |



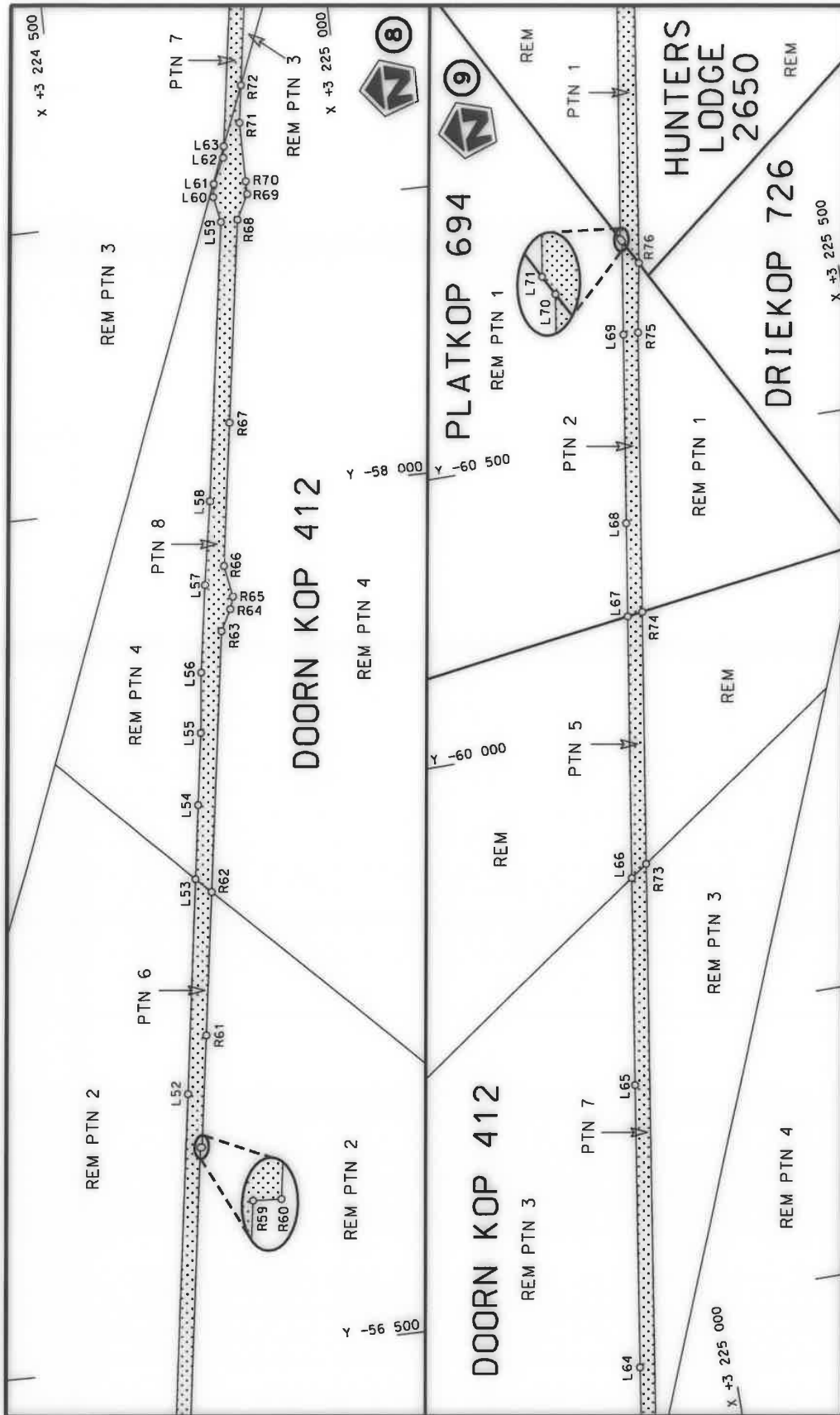
| | | | |
|---|---|---|--|
| <p>Die Suid Afrikaanse Nasionale Padagentskap MSB Bpk The South African National Roads Agency SOC Ltd</p> | <p>Die figuur getoon The figure shown</p> | <p>stel die padreserwe voor van 'n gedeelte represents the road reserve of a portion van Nasionale Roete N8 Sektie of National Route 10</p> | <p>Vel Sheet 2 of 25 Plan P1147/19</p> |
|---|---|---|--|




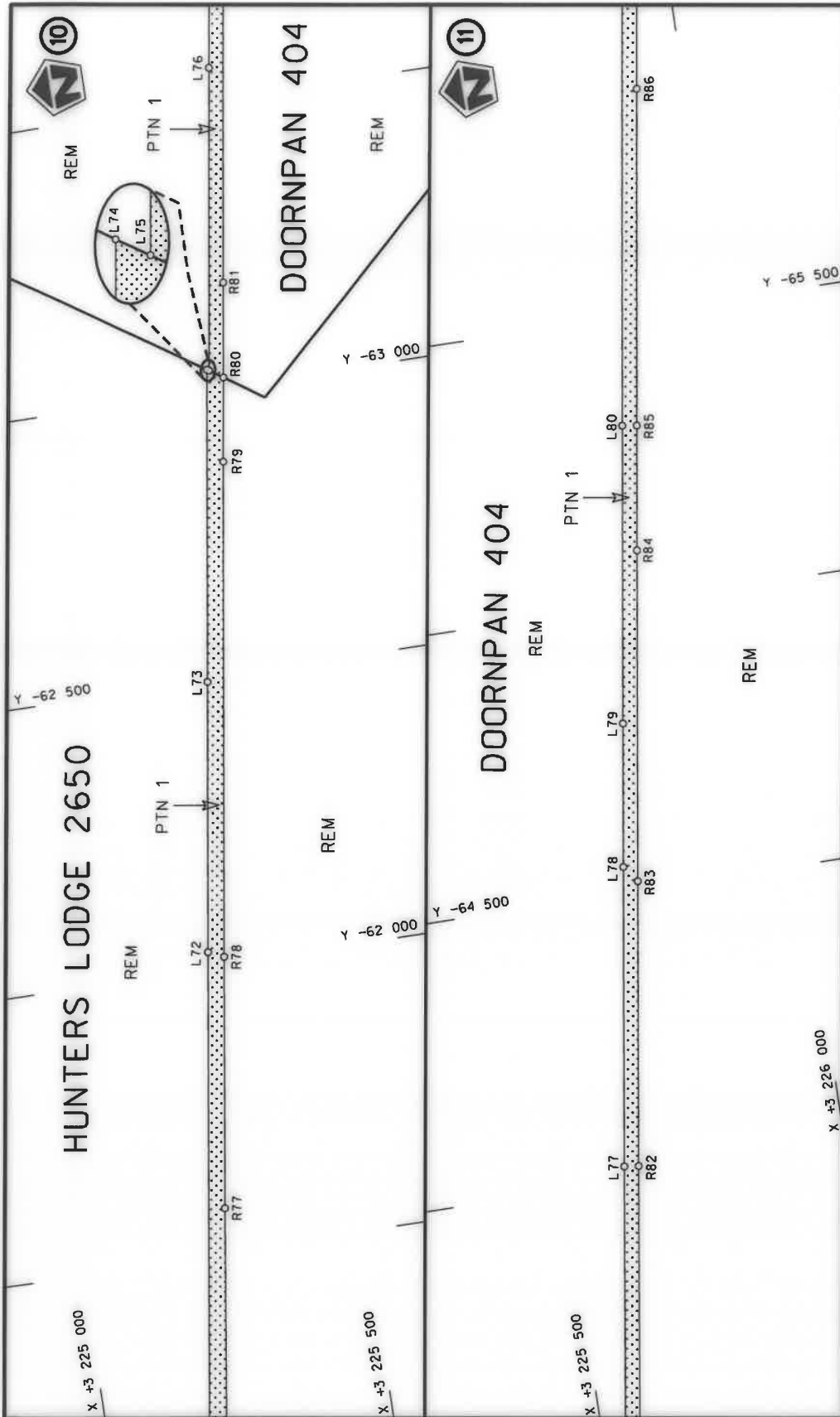
| | | | |
|---|---------------------------------------|--|----------------------|
| Die Suid-Afrikaanse Nasionale Padagentskap MSB Bpk The South African National Roads Agency SOC Ltd | Die figuur getoon The figure shown | stel die padreserwe voor van 'n gedeelte represents the road reserve of a portion van Nasionale Roete N8 of National Route N8 | Vel Sheet 3 of 25 |
| Die figuur getoon The figure shown | | Sektie Section 10 | Plan P1147/19 |



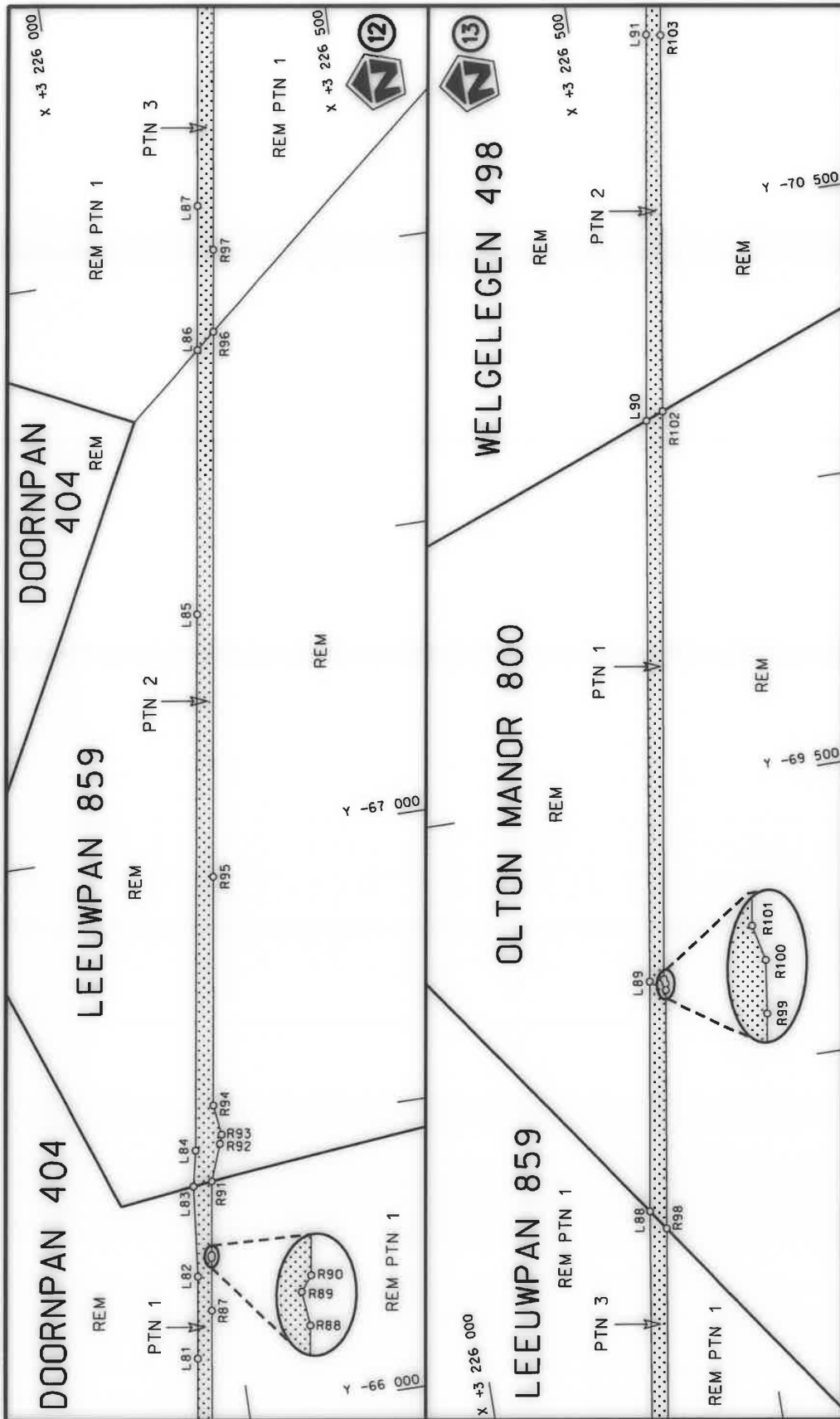
| | | | |
|---|---|---|--|
| <p>Die Suid Afrikaanse Nasionale Padagentskap MSB Bpk The South African National Roads Agency SOC Ltd</p> | <p>Die figuur getoon The figure shown</p>  | <p>stelt die padreserwe voor van 'n gedeelte represents the road reserve of a portion van Nasionale Roete NB Sektie of National Route Section</p> <p>10</p> | <p>Vel Sheet 4 of 25 Plan P1147/19</p> |
|---|---|---|--|



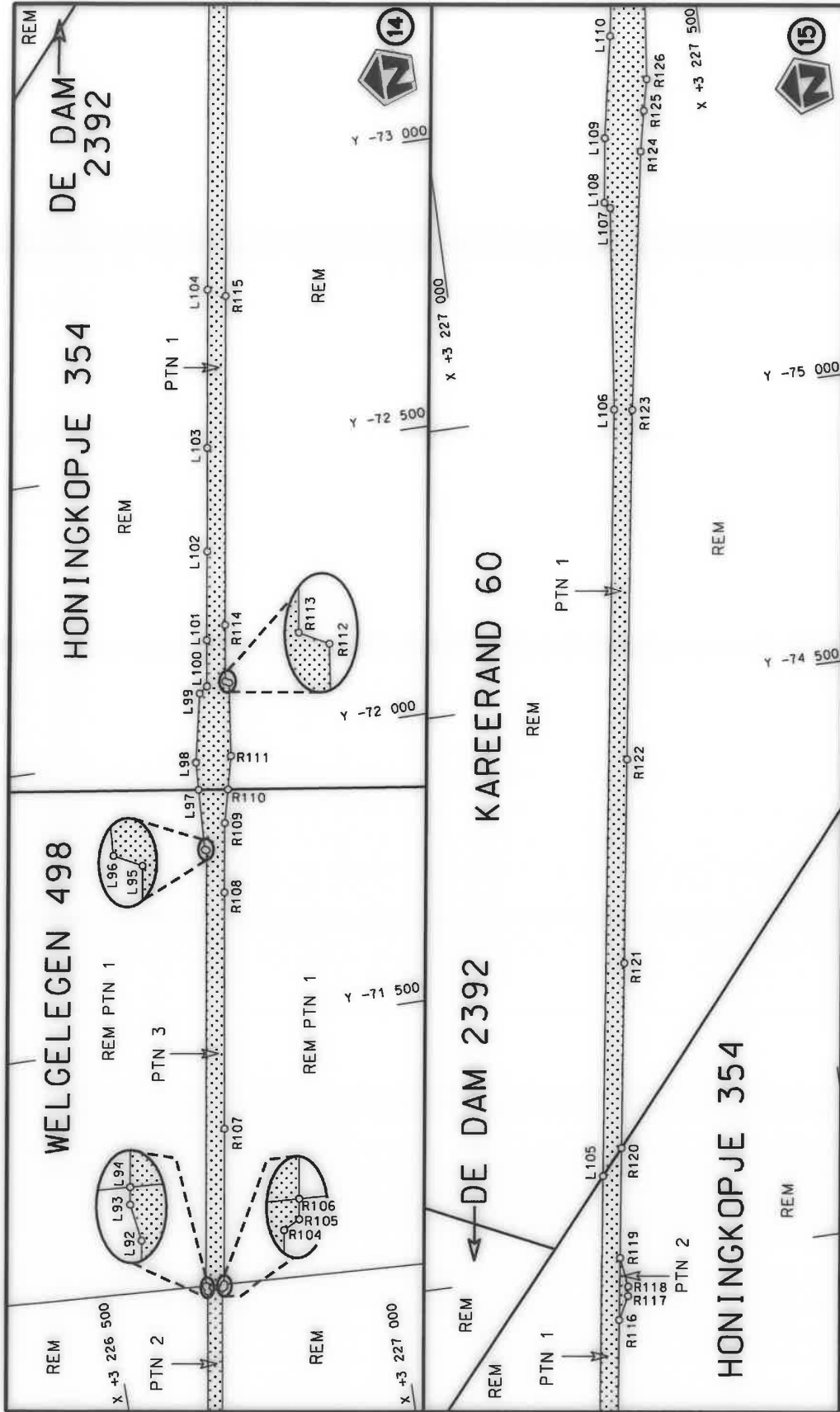
| | | | | |
|---|---------------------------------------|---|---|----------------------|
| Die Suid Afrikaanse Nasionale Padagentskap MSB Bpk The South African National Roads Agency SOC Ltd | Die figuur getoon The figure shown |  | stelde padreserwe voor van 'n gedeelte represents the road reserve of a portion van Nasionale Roete N8 of National Route | Vel Sheet 5 of 25 |
| | | | Seksie Section 10 | Plan P1147/19 |



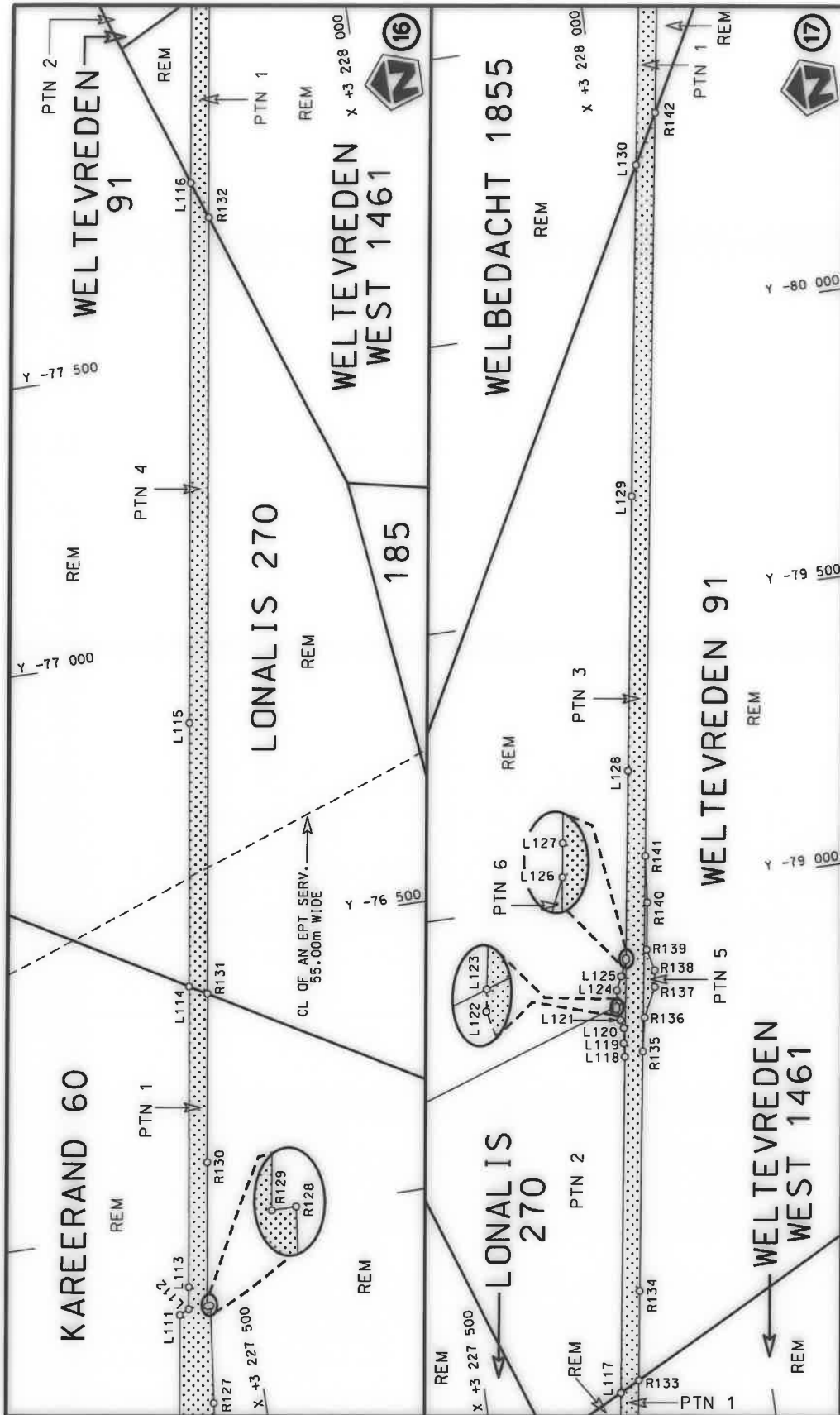
| | | | |
|---|---|---|---|
| <p>Die Suid Afrikaanse Nasionale Padagentskap MSB Bpk The South African National Roads Agency SOC Ltd</p> | <p>Die figuur getoon The figure shown</p>  | <p>stelt die padreserwe voor van 'n gedeelte represents the road reserve of a portion van Nasionale Roete N8 Sektie of National Route of National Route</p> <p>10</p> | <p>Vel Sheet 6 of 25</p> <p>Plan P1147/19</p> |
|---|---|---|---|




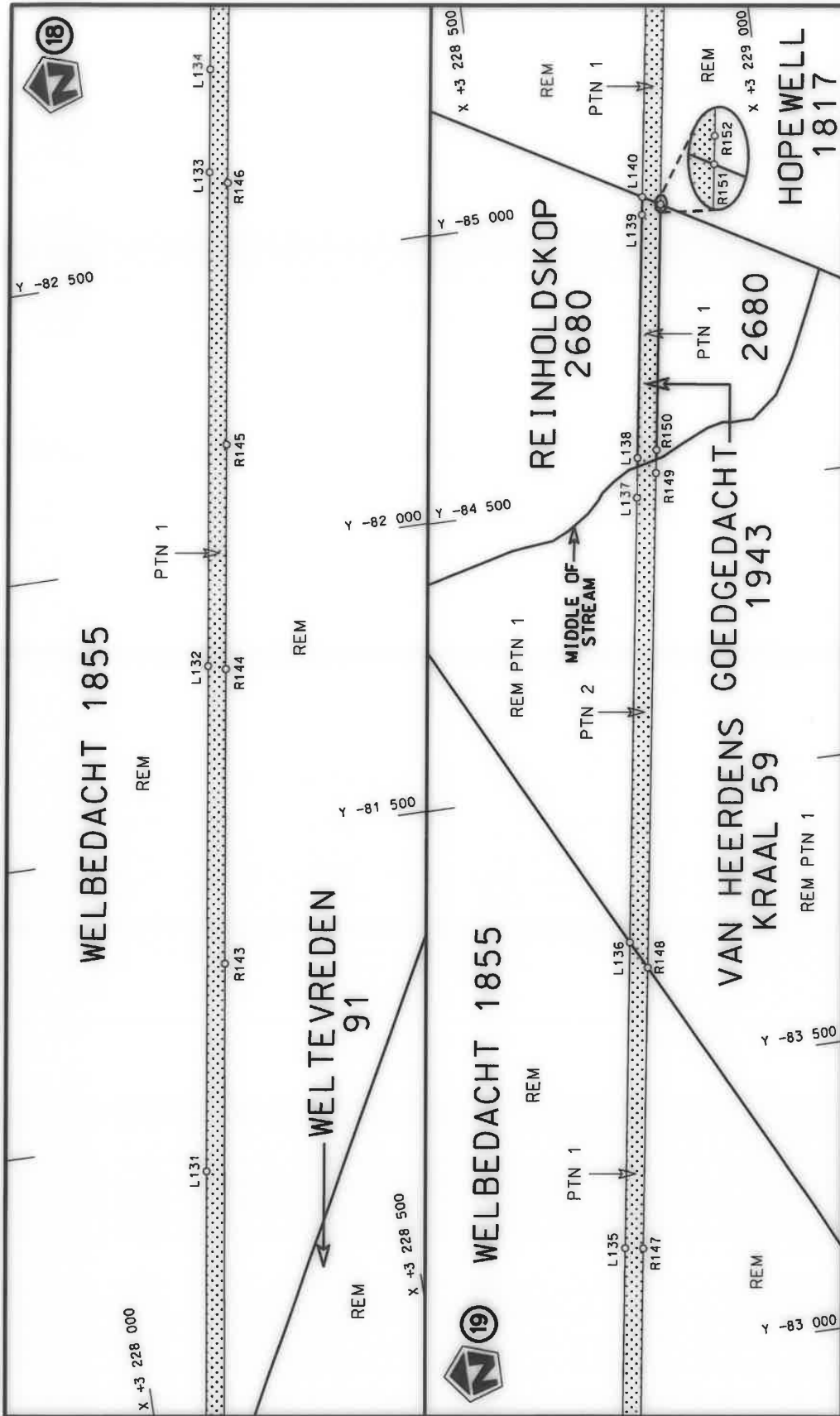
| | | | |
|---|---|--|--|
| <p>Die Suid Afrikaanse Nasionale Padagentskap MSB Bpk The South African National Roads Agency SOC Ltd</p> | <p>Die figuur getoon The figure shown</p>  | <p>stelt die padreserwe voor van 'n gedeelte represents the road reserve of a portion van Nasionale Roete NB of National Route Section</p> <p>10</p> | <p>Vel Sheet 7 of 25 Plan P1147/19</p> |
|---|---|--|--|



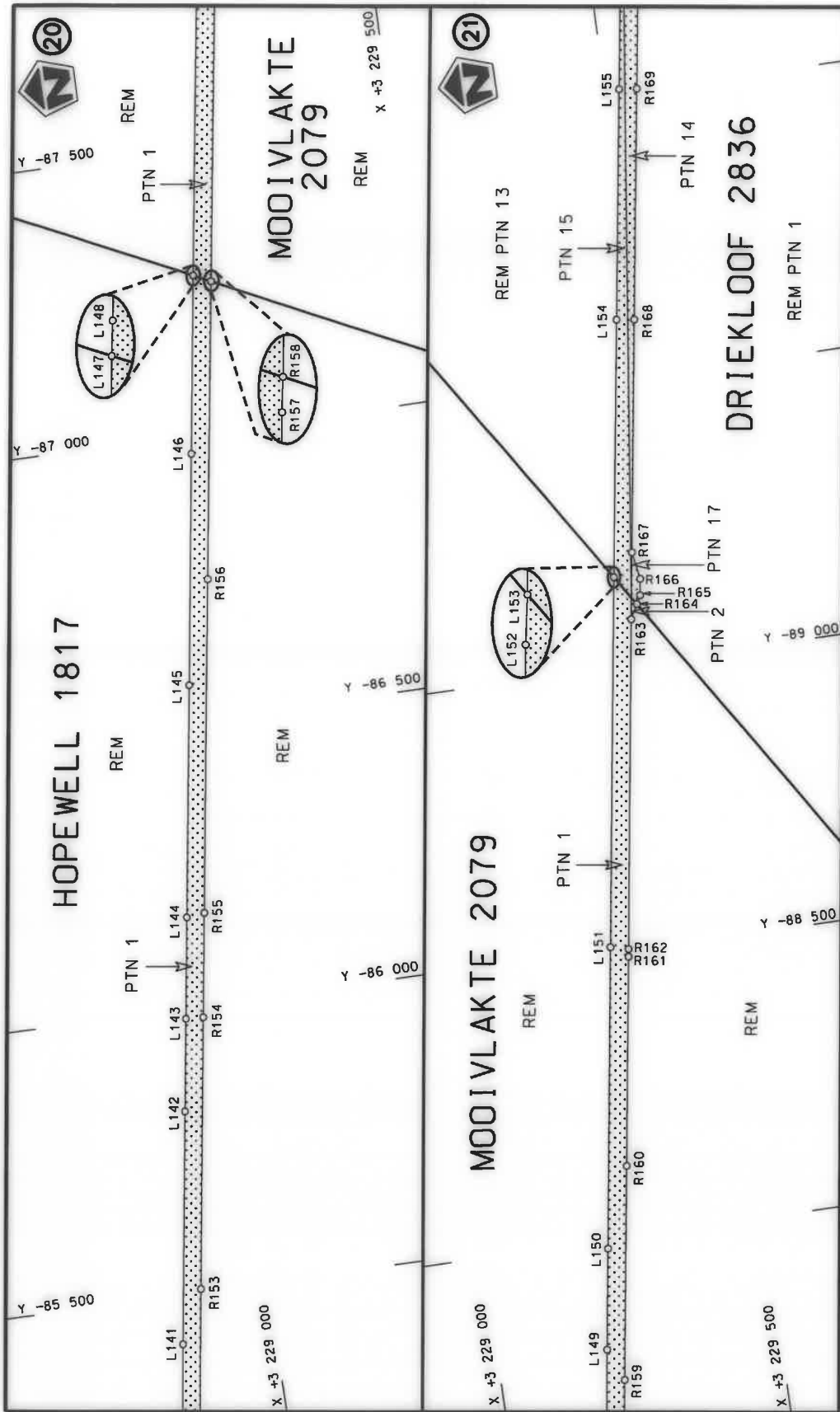
| | | | |
|---|---------------------------------------|---|----------------------|
| Die Suid Afrikaanse Nasionale Padagentskap MSB Bpk The South African National Roads Agency SOC Ltd | Die figuur getoon The figure shown | stel die padreserwe voor van 'n gedeelte represents the road reserve of a portion van Nasionale Roete NB of National Route | Vel Sheet 8 of 25 |
| | | 10 | Plan P1147/19 |



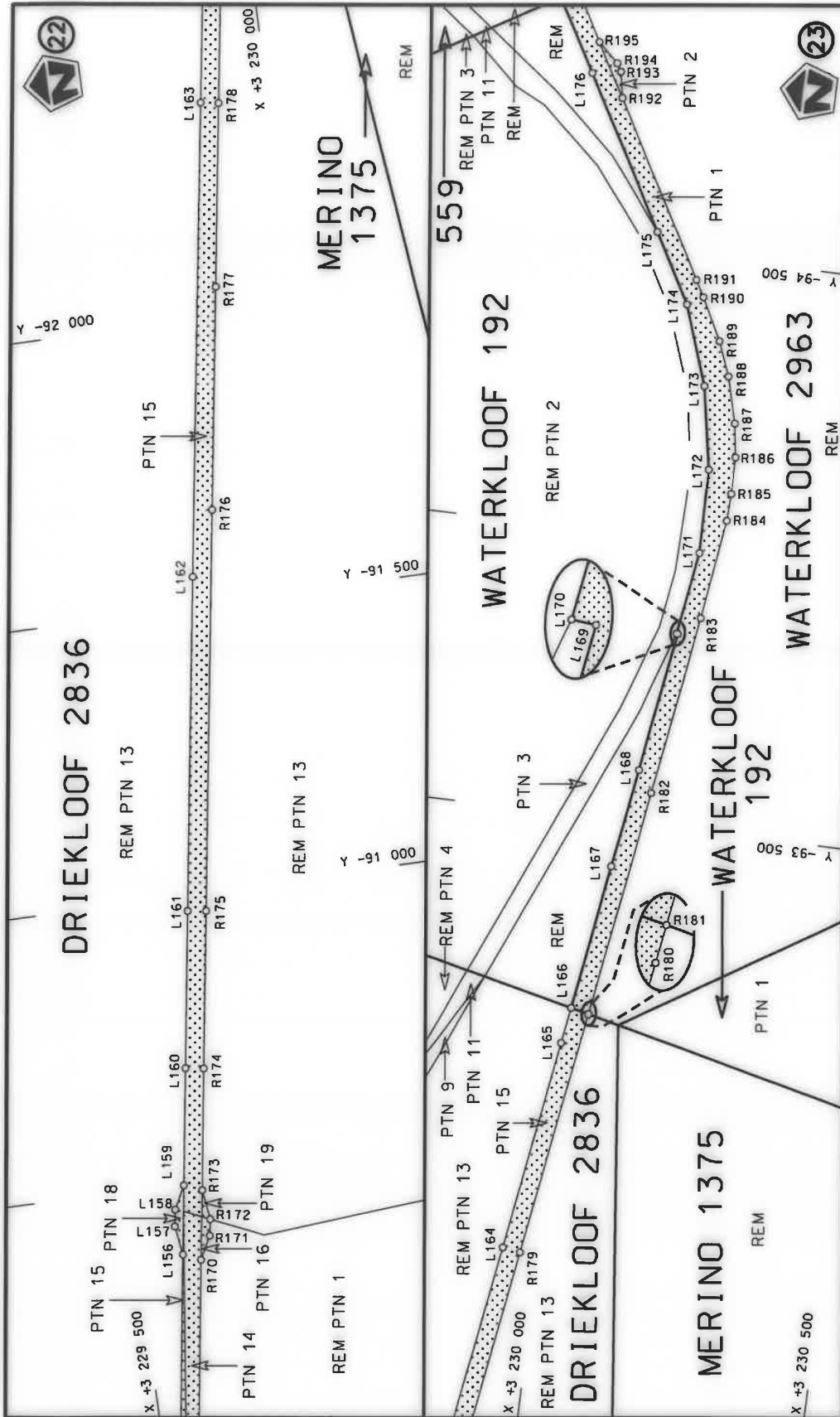
| | | | | |
|---|---------------------------------------|---|--|------------------------------------|
| Die Suid Afrikaanse Nasionale Padagentskap MSB Bpk The South African National Roads Agency SOC Ltd | Die figuur getoon The figure shown |  | stelde podreserwe voor van 'n gedeelte represents the road reserve of a portion van Nasionale Roete N8 of National Route N8 | Vel Sheet 9 of 25 Plan P1147/19 |
|---|---------------------------------------|---|--|------------------------------------|



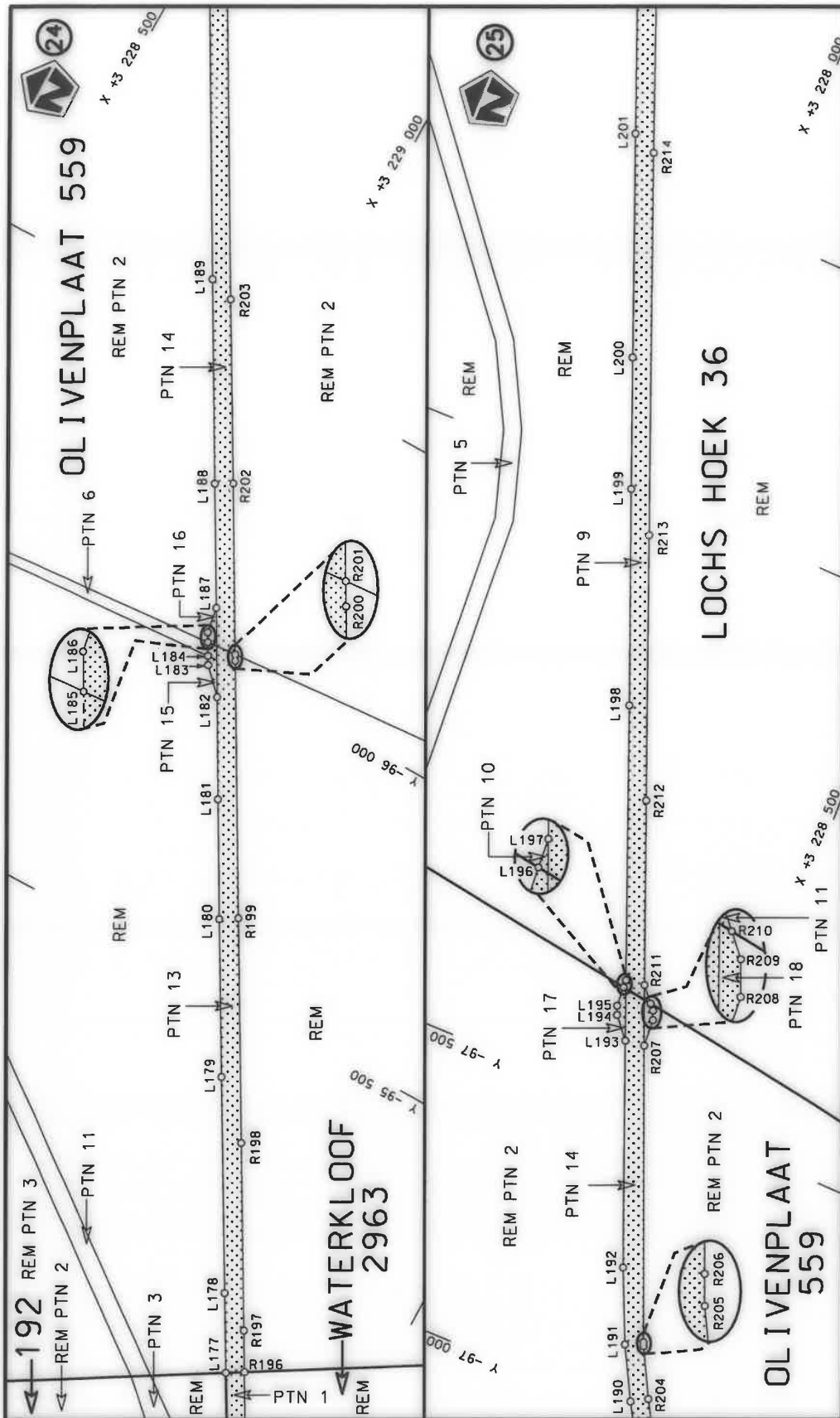
| | | | |
|---|---|---|---|
| <p>Die Suid Afrikaanse Nasionale Padagentskap MSB Bpk The South African National Roads Agency SOC Ltd</p> | <p>Die figuur getoon The figure shown</p>  | <p>steldie padreserwe voor van 'n gedeelte represents the road reserve of a portion van Nasionale Roete NB of National Route N8 Section</p> | <p>Vel Sheet 10 of 25 Plan P1147/19</p> |
|---|---|---|---|



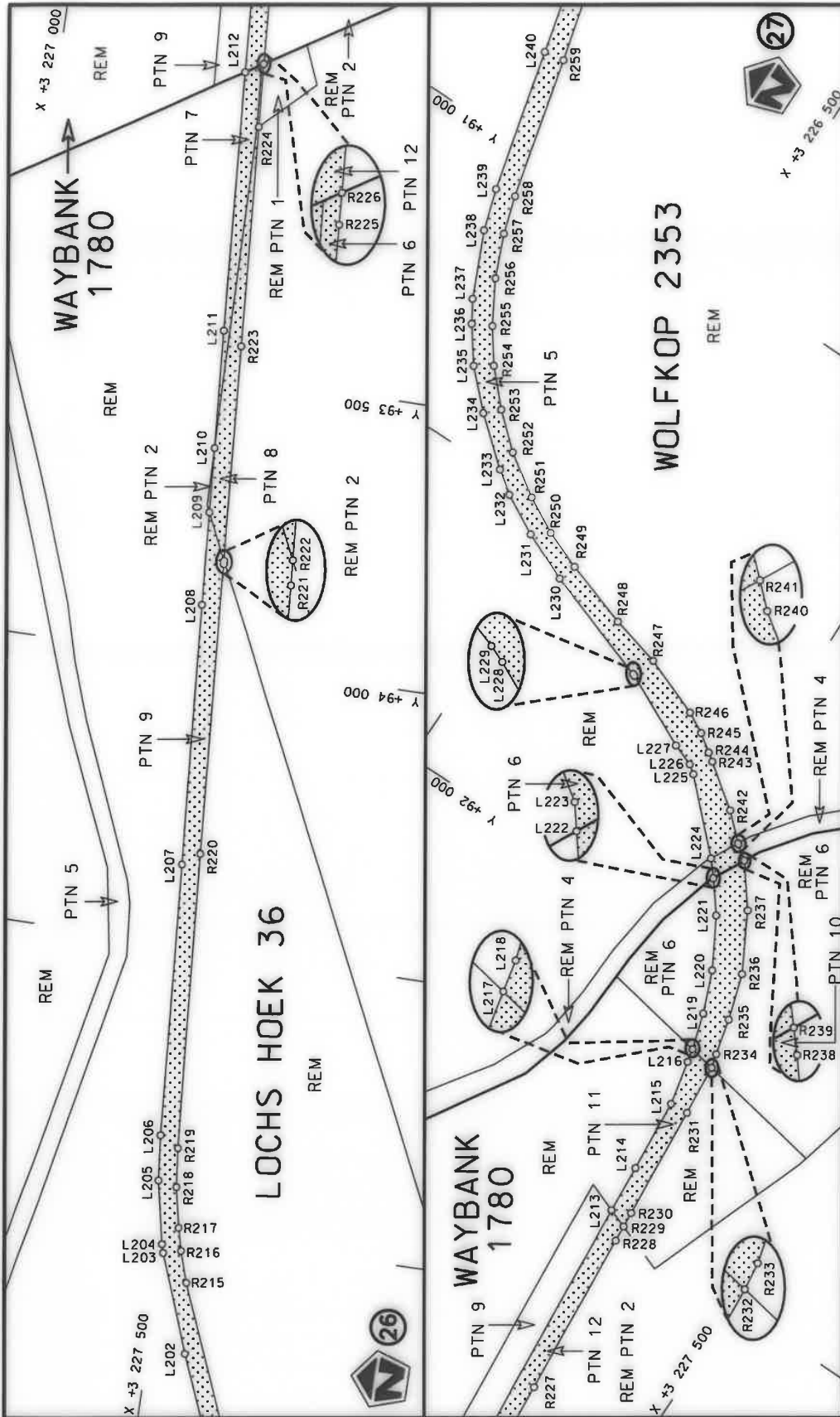
| | | | | |
|---|---|---|---|---|
| <p>Die Suid-Afrikaanse Nasionale Padagentskap MSB Bpk The South African National Roads Agency SOC Ltd</p> | <p>Die figuur getoon The figure shown</p> |  | <p>stiel die padreserwe voor van 'n gedeelte represents the road reserve of a portion van Nasionale Roete N8 of National Route N8</p> | <p>Vel Sheet 11 of 25 Plan P1147/19</p> |
|---|---|---|---|---|



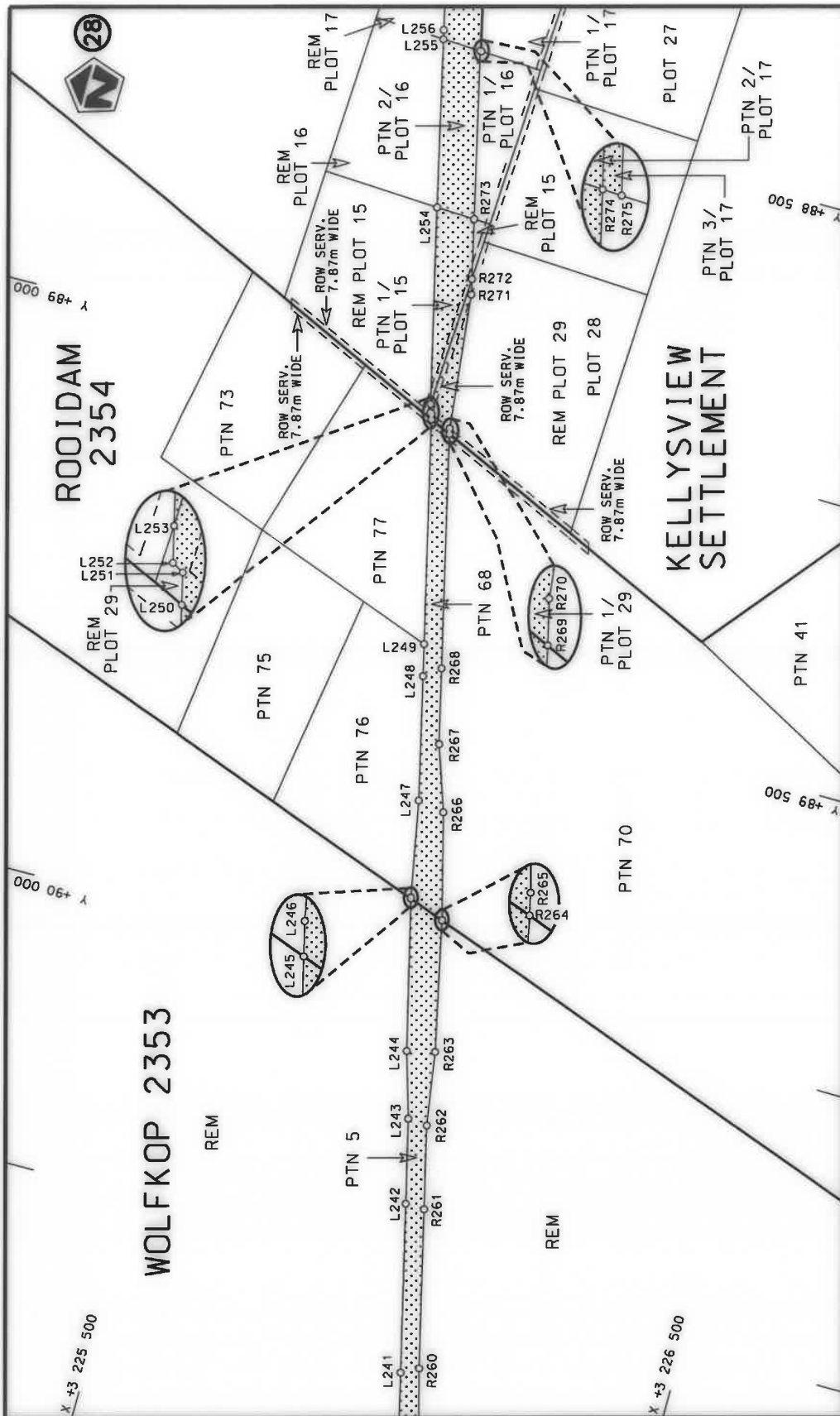
| | | | |
|---|---|--|--|
| <p>Die Suid Afrikaanse Nasionale Padagentskap MSB Bpk The South African National Roads Agency SOC Ltd</p> | <p>Die figuur getoon The figure shown</p> | <p>steldie padreserwe voor van 'n gedeelte represents the road reserve of a portion van Nasionale Roete N8 of National Route</p> | <p>Vel Sheet 12 van 25 Plan P1147/19</p> |
| | | <p>10</p> | <p>10</p> |

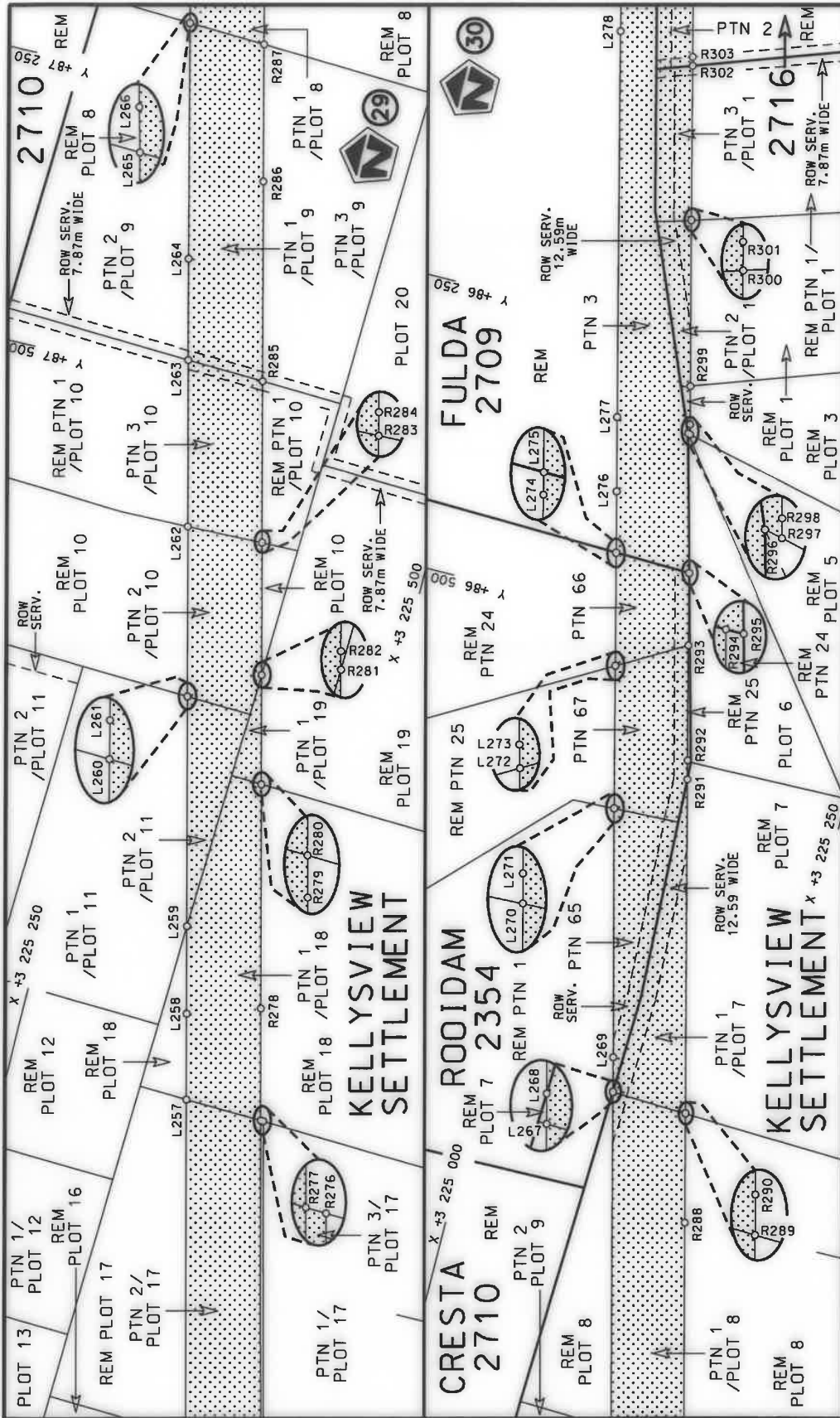


| | | | |
|---|---|--|---|
| <p>Die Suid Afrikaanse Nasionale Padagentskap MSB Bpk The South African National Roads Agency SOC Ltd</p> | <p>Die figuur getoon The figure shown</p> | <p>stelt die padreserwe voor van 'n gedeelte represents the road reserve of a portion van Nasionale Roete N8 of National Route</p> | <p>Vel Sheet 13 of 25 Plan P1147/19</p> |
|---|---|--|---|

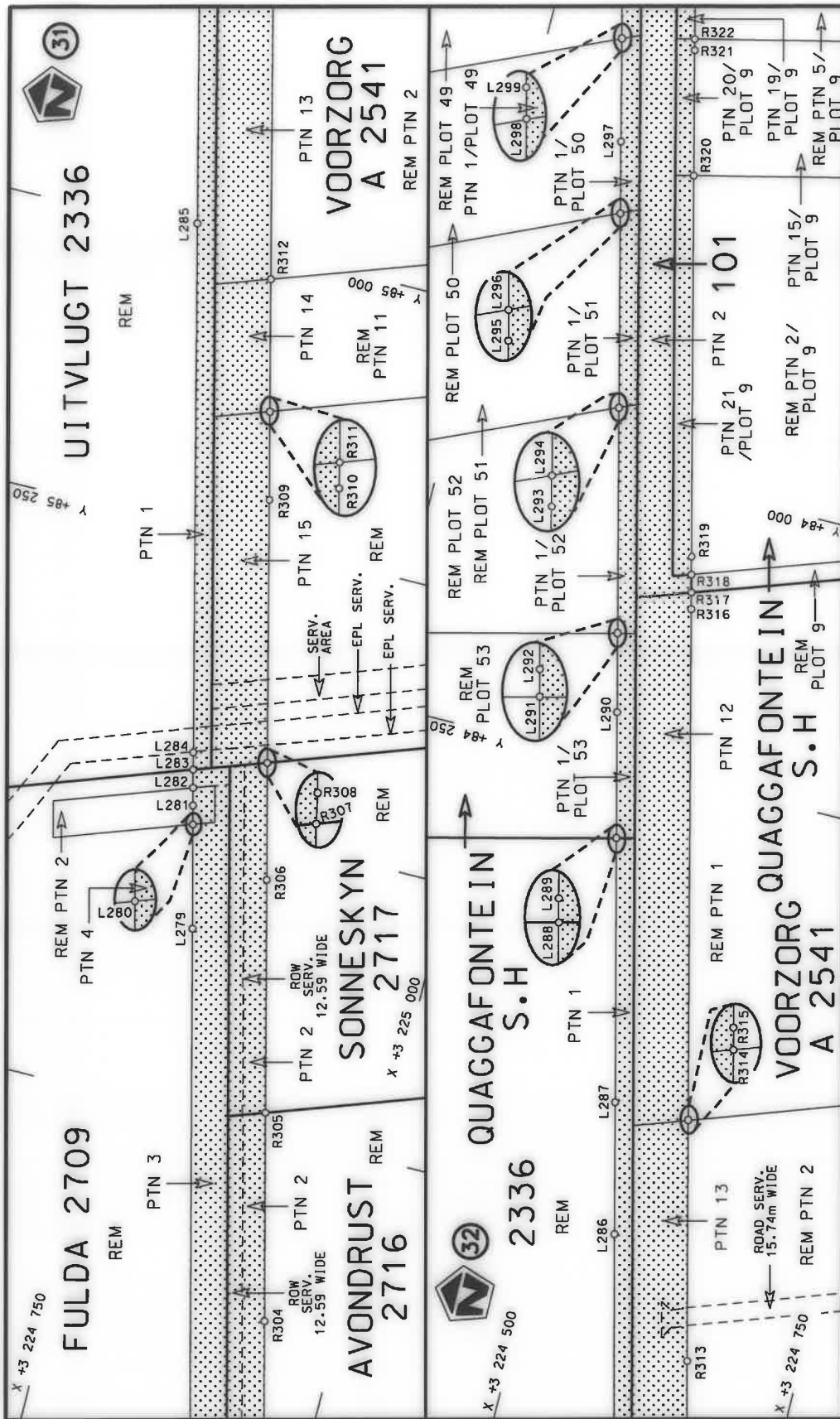


| | | | |
|-------------------------------------|---|------------------------------------|---|
| Vel Sheet 14 of 25 Plan P1147/19 | steldie padreserwe voor van 'n gedeelte represents the road reserve of a portion von Nasionale Roete N8 Seksie of National Route 10 Section | Die figuur getoon The figure shown | Die Suid Afrikaanse Nasionale Padagentskap MSB Bpk The South African National Roads Agency SOC Ltd |
|-------------------------------------|---|------------------------------------|---|

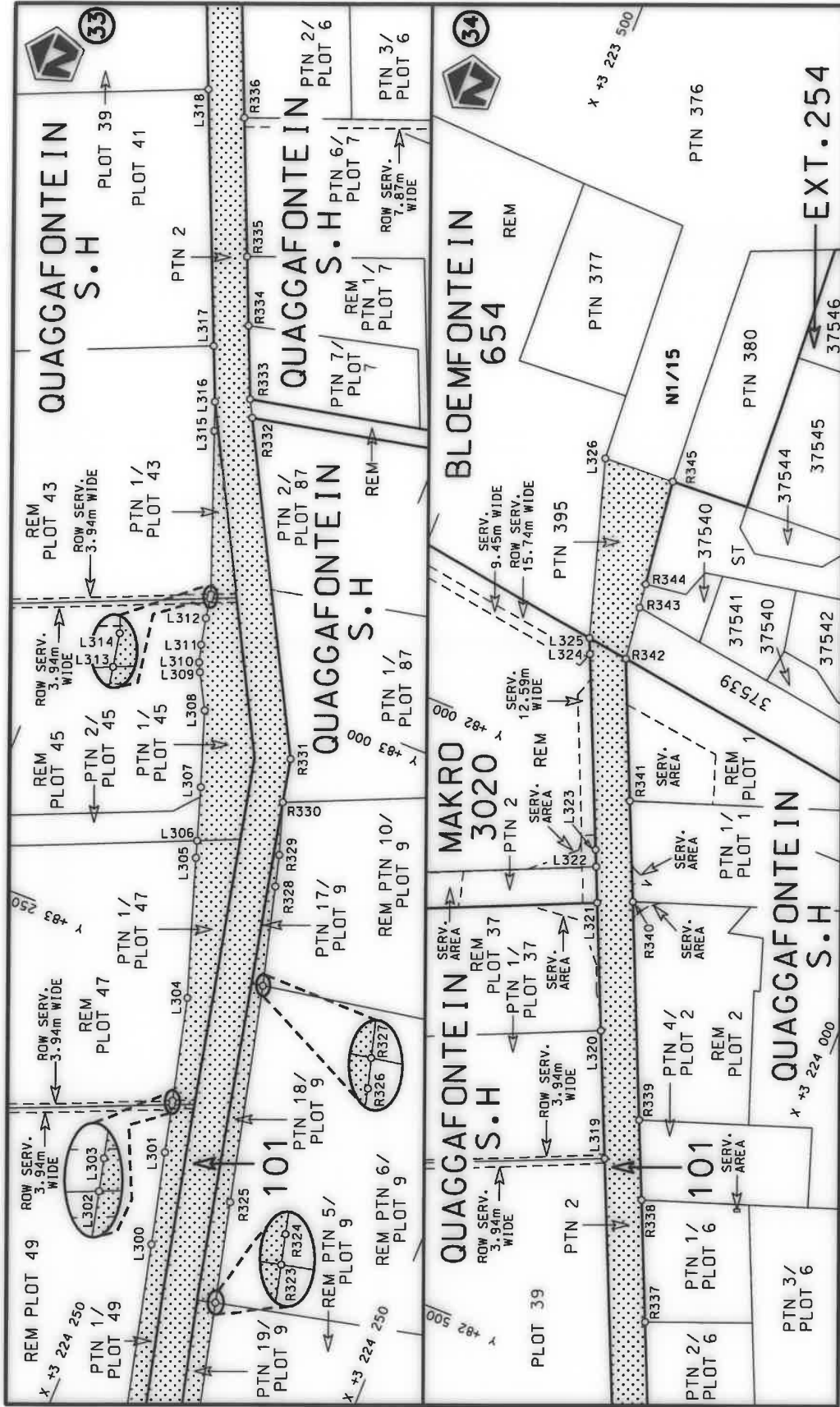




| | | | |
|---|---------------------------------------|---|------------------------|
| Die Suid Afrikaanse Nasionale Padagentskap MSB Bpk The South African National Roads Agency SOC Ltd | Die figuur getoon The figure shown | stelde podreserwe voor van 'n gedeelte represents the road reserve of a portion van Nasionale Roete N8 of National Route | Vel Sheet 16 van 25 |
| | | 10 | Plan P1147/19 |



| | | | |
|---|---------------------------------------|---|-----------------------|
| Die Suid Afrikaanse Nasionale Padagentskap MSB Bpk The South African National Roads Agency SOC Ltd | Die figuur getoon The figure shown | stelt die padreserwe voor van 'n gedeelte represents the road reserve of a portion van Nasionale Roete NB Sekste of National Route Section | Vel Sheet 17 of 25 |
| | | 10 | Plan P1147/19 |



| | | | |
|---|---------------------------------------|---|--|
| Die Suid Afrikaanse Nasionale Padagentskap MSB Bpk The South African National Roads Agency SOC Ltd | Die figuur getoon The figure shown |  | steldie padreserwe voor 'n gedeelte represents the road reserve of a portion van Nasionale Roete NB Seksie of National Route 10 Section |
| | | Vel Sheet | van of |
| | | Plan | P1147/19 |
| | | | 25 |

| PADRESERWE KOÖRDINATE / ROAD RESERVE CO-ORDINATES | | | | | |
|---|------------|--------------|----------------------------|-----|-------------------------|
| LINKERKANT/LEFT HAND SIDE | | | REGTERKANT/RIGHT HAND SIDE | | |
| | Y | X | WG 25° | Y | X |
| L1 | -39 715.98 | 3 222 651.08 | | R1 | -39 707.63 3 222 688.31 |
| L2 | -40 000.75 | 3 222 694.99 | | R2 | -39 912.74 3 222 716.88 |
| L3 | -40 486.42 | 3 222 764.77 | | R3 | -39 950.60 3 222 719.83 |
| L4 | -40 637.45 | 3 222 785.65 | | R4 | -40 314.20 3 222 772.02 |
| L5 | -40 889.85 | 3 222 790.76 | | R5 | -40 524.89 3 222 801.94 |
| L6 | -40 991.15 | 3 222 755.73 | | R6 | -40 778.92 3 222 855.50 |
| L7 | -41 003.73 | 3 222 740.11 | | R7 | -40 783.01 3 222 856.92 |
| L8 | -40 972.71 | 3 222 589.66 | | R8 | -40 796.33 3 222 858.86 |
| L9 | -40 956.52 | 3 222 576.92 | | R9 | -40 849.22 3 222 879.98 |
| L10 | -40 991.47 | 3 222 534.84 | | R10 | -41 044.33 3 222 957.87 |
| L11 | -41 035.11 | 3 222 733.81 | | R11 | -41 048.38 3 222 967.35 |
| L12 | -41 057.48 | 3 222 753.02 | | R12 | -41 074.14 3 223 058.91 |
| L13 | -41 206.08 | 3 222 824.57 | | R13 | -41 081.88 3 223 085.38 |
| L14 | -41 316.19 | 3 222 865.57 | | R14 | -41 088.99 3 223 087.43 |
| L15 | -41 497.09 | 3 222 894.23 | | R15 | -41 100.28 3 223 090.70 |
| L16 | -41 653.95 | 3 222 913.90 | | R16 | -41 095.63 3 223 044.93 |
| L17 | -41 966.15 | 3 222 946.46 | | R17 | -41 093.43 3 223 023.59 |
| L18 | -42 630.81 | 3 223 017.14 | | R18 | -41 080.28 3 222 950.83 |
| L19 | -42 769.85 | 3 223 031.92 | | R19 | -41 087.45 3 222 945.10 |
| L20 | -43 675.30 | 3 223 125.14 | | R20 | -41 153.74 3 222 931.94 |
| L21 | -43 674.45 | 3 223 122.09 | | R21 | -41 250.91 3 222 922.70 |
| L22 | -44 159.20 | 3 223 171.63 | | R22 | -41 333.11 3 222 925.56 |
| L23 | -44 499.60 | 3 223 206.42 | | R23 | -41 400.97 3 222 928.93 |
| L24 | -45 215.94 | 3 223 280.36 | | R24 | -41 494.85 3 222 929.72 |
| L25 | -45 785.64 | 3 223 337.96 | | R25 | -41 936.41 3 222 975.51 |
| L26 | -45 789.38 | 3 223 336.39 | | R26 | -41 966.10 3 222 978.43 |
| L27 | -45 796.28 | 3 223 339.07 | | R27 | -42 228.33 3 223 005.34 |
| L28 | -46 088.38 | 3 223 369.83 | | R28 | -42 385.04 3 223 020.71 |
| L29 | -46 654.24 | 3 223 430.97 | | R29 | -42 618.19 3 223 044.06 |
| L30 | -46 654.90 | 3 223 427.69 | | R30 | -42 653.95 3 223 044.79 |
| L31 | -47 072.15 | 3 223 471.07 | | R31 | -43 682.84 3 223 152.22 |
| L32 | -47 370.88 | 3 223 501.51 | | R32 | -43 683.78 3 223 155.51 |
| L33 | -47 370.22 | 3 223 504.64 | | R33 | -44 106.70 3 223 198.57 |
| L34 | -47 705.48 | 3 223 538.93 | | R34 | -44 496.91 3 223 238.31 |
| L35 | -48 240.90 | 3 223 594.59 | | R35 | -45 210.75 3 223 311.87 |
| L36 | -48 780.21 | 3 223 649.63 | | R36 | -45 722.90 3 223 364.33 |
| L37 | -49 851.15 | 3 223 759.87 | | R37 | -45 728.41 3 223 362.01 |
| L38 | -49 890.33 | 3 223 763.68 | | R38 | -45 899.33 3 223 379.04 |
| L39 | -49 930.08 | 3 223 760.70 | | R39 | -47 365.02 3 223 529.40 |
| L40 | -50 137.91 | 3 223 784.29 | | R40 | -47 703.11 3 223 564.26 |
| L41 | -50 175.48 | 3 223 792.85 | | R41 | -48 250.74 3 223 620.51 |
| L42 | -50 406.22 | 3 223 816.66 | | R42 | -49 213.82 3 223 719.52 |
| L43 | -52 016.77 | 3 223 982.21 | | R43 | -49 887.74 3 223 788.70 |
| L44 | -52 716.36 | 3 224 053.89 | | R44 | -49 930.45 3 223 806.94 |
| L45 | -53 225.50 | 3 224 106.03 | | R45 | -50 131.73 3 223 820.06 |
| L46 | -53 624.44 | 3 224 147.40 | | R46 | -50 175.98 3 223 818.46 |
| L47 | -54 275.56 | 3 224 214.13 | | R47 | -50 390.74 3 223 840.35 |
| L48 | -54 875.20 | 3 224 276.08 | | R48 | -51 061.17 3 223 909.27 |
| L49 | -55 814.46 | 3 224 372.67 | | R49 | -51 952.87 3 224 001.14 |
| L50 | -56 170.45 | 3 224 426.49 | | R50 | -52 226.69 3 224 028.89 |
| L51 | -56 276.34 | 3 224 441.74 | | R51 | -52 424.29 3 224 049.35 |

Vel 19 Van 25
Sheet of

P1147/19

| PADRESERWE KOÖRDINATE / ROAD RESERVE CO-ORDINATES | | | | | |
|---|------------|-------|----------------------------|------|-------------------------|
| LINKERKANT/LEFT HAND SIDE | | | REGTERKANT/RIGHT HAND SIDE | | |
| | Y | X | WG 25° | Y | X |
| L52 | -56 963.72 | 3 224 | 546.05 | R52 | -52 732.20 3 224 081.03 |
| L53 | -57 338.02 | 3 224 | 601.86 | R53 | -53 208.95 3 224 129.80 |
| L54 | -57 466.87 | 3 224 | 621.12 | R54 | -54 249.11 3 224 236.83 |
| L55 | -57 592.08 | 3 224 | 640.07 | R55 | -55 776.92 3 224 394.52 |
| L56 | -57 697.74 | 3 224 | 652.72 | R56 | -55 847.78 3 224 402.67 |
| L57 | -57 849.51 | 3 224 | 676.32 | R57 | -56 187.57 3 224 454.13 |
| L58 | -57 994.95 | 3 224 | 701.32 | R58 | -56 283.21 3 224 468.90 |
| L59 | -58 480.10 | 3 224 | 774.78 | R59 | -56 867.87 3 224 557.07 |
| L60 | -58 524.96 | 3 224 | 766.39 | R60 | -56 867.68 3 224 560.14 |
| L61 | -58 547.52 | 3 224 | 769.82 | R61 | -57 062.72 3 224 589.71 |
| L62 | -58 591.46 | 3 224 | 791.34 | R62 | -57 312.22 3 224 627.16 |
| L63 | -58 611.39 | 3 224 | 794.31 | R63 | -57 765.84 3 224 695.82 |
| L64 | -58 898.11 | 3 224 | 837.14 | R64 | -57 802.61 3 224 715.00 |
| L65 | -59 389.75 | 3 224 | 911.03 | R65 | -57 823.95 3 224 721.85 |
| L66 | -59 750.27 | 3 224 | 965.42 | R66 | -57 879.00 3 224 712.83 |
| L67 | -60 204.89 | 3 225 | 034.04 | R67 | -58 128.11 3 224 750.23 |
| L68 | -60 367.09 | 3 225 | 058.25 | R68 | -58 480.34 3 224 803.55 |
| L69 | -60 694.47 | 3 225 | 107.70 | R69 | -58 523.38 3 224 825.48 |
| L70 | -60 856.50 | 3 225 | 131.82 | R70 | -58 545.88 3 224 825.28 |
| L71 | -60 860.72 | 3 225 | 129.54 | R71 | -58 649.35 3 224 825.60 |
| L72 | -62 026.31 | 3 225 | 305.25 | R72 | -58 714.16 3 224 835.35 |
| L73 | -62 495.17 | 3 225 | 376.27 | R73 | -59 770.30 3 224 994.29 |
| L74 | -63 036.30 | 3 225 | 457.46 | R74 | -60 208.40 3 225 060.21 |
| L75 | -63 033.98 | 3 225 | 460.96 | R75 | -60 693.74 3 225 133.41 |
| L76 | -63 558.58 | 3 225 | 539.81 | R76 | -60 814.00 3 225 154.75 |
| L77 | -64 024.77 | 3 225 | 610.24 | R77 | -61 577.20 3 225 266.74 |
| L78 | -64 544.90 | 3 225 | 688.50 | R78 | -62 013.79 3 225 332.50 |
| L79 | -64 793.64 | 3 225 | 726.20 | R79 | -62 872.36 3 225 462.20 |
| L80 | -65 310.05 | 3 225 | 803.72 | R80 | -63 018.31 3 225 484.56 |
| L81 | -66 109.05 | 3 225 | 924.60 | R81 | -63 182.88 3 225 509.06 |
| L82 | -66 251.44 | 3 225 | 946.52 | R82 | -64 021.55 3 225 635.13 |
| L83 | -66 408.98 | 3 225 | 962.67 | R83 | -64 516.16 3 225 709.84 |
| L84 | -66 470.68 | 3 225 | 975.77 | R84 | -65 090.00 3 225 796.18 |
| L85 | -67 399.99 | 3 226 | 119.40 | R85 | -65 306.32 3 225 829.10 |
| L86 | -67 857.46 | 3 226 | 188.53 | R86 | -65 889.55 3 225 917.28 |
| L87 | -68 106.82 | 3 226 | 226.21 | R87 | -66 188.66 3 225 962.08 |
| L88 | -68 773.04 | 3 226 | 324.86 | R88 | -66 279.74 3 225 975.48 |
| L89 | -69 171.52 | 3 226 | 386.53 | R89 | -66 283.56 3 225 975.10 |
| L90 | -70 143.97 | 3 226 | 531.76 | R90 | -66 285.19 3 225 976.40 |
| L91 | -70 811.91 | 3 226 | 634.19 | R91 | -66 413.01 3 225 996.22 |
| L92 | -71 050.47 | 3 226 | 670.15 | R92 | -66 475.86 3 226 020.54 |
| L93 | -71 060.11 | 3 226 | 668.63 | R93 | -66 491.54 3 226 025.71 |
| L94 | -71 060.59 | 3 226 | 668.70 | R94 | -66 544.22 3 226 019.00 |
| L95 | -71 820.41 | 3 226 | 783.41 | R95 | -66 940.96 3 226 078.72 |
| L96 | -71 821.97 | 3 226 | 780.46 | R96 | -67 885.05 3 226 221.36 |
| L97 | -71 927.88 | 3 226 | 785.25 | R97 | -68 026.71 3 226 242.76 |
| L98 | -71 976.02 | 3 226 | 787.43 | R98 | -68 738.69 3 226 349.35 |
| L99 | -72 095.47 | 3 226 | 812.10 | R99 | -69 152.18 3 226 412.45 |
| L100 | -72 105.89 | 3 226 | 826.52 | R100 | -69 163.83 3 226 413.95 |
| L101 | -72 186.59 | 3 226 | 838.44 | R101 | -69 171.71 3 226 412.13 |
| L102 | -72 340.60 | 3 226 | 862.21 | R102 | -70 155.82 3 226 562.68 |

Vel
Sheet

20

Van
of

25

P1147/19

| PADRESERWE KOÖRDINATE / ROAD RESERVE CO-ORDINATES | | | | | |
|---|------------|--------------|----------------------------|------|-------------------------|
| LINKERKANT/LEFT HAND SIDE | | | REGTERKANT/RIGHT HAND SIDE | | |
| | Y | X | WG 25° | Y | X |
| L103 | -72 521.03 | 3 226 889.06 | | R103 | -70 806.84 3 226 659.21 |
| L104 | -72 796.20 | 3 226 930.34 | | R104 | -71 052.66 3 226 696.19 |
| L105 | -73 658.27 | 3 227 060.58 | | R105 | -71 054.49 3 226 699.88 |
| L106 | -74 993.97 | 3 227 261.85 | | R106 | -71 058.97 3 226 700.56 |
| L107 | -75 346.46 | 3 227 302.21 | | R107 | -71 330.29 3 226 741.74 |
| L108 | -75 357.24 | 3 227 293.60 | | R108 | -71 742.21 3 226 803.65 |
| L109 | -75 469.62 | 3 227 309.18 | | R109 | -71 863.12 3 226 822.22 |
| L110 | -75 646.02 | 3 227 342.11 | | R110 | -71 920.72 3 226 836.34 |
| L111 | -75 845.26 | 3 227 373.25 | | R111 | -71 978.43 3 226 850.20 |
| L112 | -75 852.91 | 3 227 390.65 | | R112 | -72 106.34 3 226 866.08 |
| L113 | -75 891.28 | 3 227 396.60 | | R113 | -72 109.77 3 226 859.80 |
| L114 | -76 414.57 | 3 227 475.88 | | R114 | -72 208.19 3 226 874.19 |
| L115 | -76 872.63 | 3 227 544.86 | | R115 | -72 780.50 3 226 960.17 |
| L116 | -77 810.28 | 3 227 686.59 | | R116 | -73 402.70 3 227 053.98 |
| L117 | -78 131.38 | 3 227 735.06 | | R117 | -73 442.53 3 227 075.15 |
| L118 | -78 716.74 | 3 227 823.40 | | R118 | -73 458.91 3 227 077.62 |
| L119 | -78 740.68 | 3 227 824.78 | | R119 | -73 511.18 3 227 070.34 |
| L120 | -78 766.76 | 3 227 828.71 | | R120 | -73 702.81 3 227 099.37 |
| L121 | -78 781.83 | 3 227 825.14 | | R121 | -74 025.27 3 227 148.21 |
| L122 | -78 801.71 | 3 227 820.42 | | R122 | -74 380.48 3 227 201.53 |
| L123 | -78 806.43 | 3 227 821.22 | | R123 | -74 988.93 3 227 293.40 |
| L124 | -78 834.47 | 3 227 826.00 | | R124 | -75 437.71 3 227 368.56 |
| L125 | -78 857.74 | 3 227 836.55 | | R125 | -75 507.79 3 227 383.78 |
| L126 | -78 884.42 | 3 227 848.64 | | R126 | -75 561.93 3 227 396.07 |
| L127 | -78 888.15 | 3 227 849.20 | | R127 | -75 682.69 3 227 409.24 |
| L128 | -79 214.14 | 3 227 898.06 | | R128 | -75 853.23 3 227 429.02 |
| L129 | -79 691.51 | 3 227 970.12 | | R129 | -75 853.21 3 227 423.60 |
| L130 | -80 266.46 | 3 228 056.68 | | R130 | -76 103.82 3 227 461.26 |
| L131 | -80 931.62 | 3 228 156.99 | | R131 | -76 397.19 3 227 505.65 |
| L132 | -81 809.82 | 3 228 289.86 | | R132 | -77 745.74 3 227 708.81 |
| L133 | -82 666.83 | 3 228 418.54 | | R133 | -78 148.91 3 227 768.84 |
| L134 | -82 845.02 | 3 228 445.46 | | R134 | -78 304.69 3 227 792.14 |
| L135 | -83 191.50 | 3 228 498.23 | | R135 | -78 721.61 3 227 855.68 |
| L136 | -83 723.50 | 3 228 578.32 | | R136 | -78 780.19 3 227 867.07 |
| L137 | -84 495.71 | 3 228 694.35 | | R137 | -78 830.97 3 227 892.22 |
| L138 | -84 565.04 | 3 228 704.77 | | R138 | -78 860.40 3 227 896.10 |
| L139 | -84 987.02 | 3 228 768.63 | | R139 | -78 897.90 3 227 887.20 |
| L140 | -85 017.68 | 3 228 773.25 | | R140 | -78 980.19 3 227 899.62 |
| L141 | -85 414.77 | 3 228 833.16 | | R141 | -79 061.57 3 227 907.41 |
| L142 | -85 821.38 | 3 228 894.82 | | R142 | -80 352.53 3 228 102.28 |
| L143 | -85 983.12 | 3 228 919.19 | | R143 | -81 287.96 3 228 243.06 |
| L144 | -86 160.20 | 3 228 945.83 | | R144 | -81 799.83 3 228 320.29 |
| L145 | -86 565.05 | 3 229 007.18 | | R145 | -82 189.65 3 228 378.88 |
| L146 | -86 968.53 | 3 229 067.61 | | R146 | -82 643.46 3 228 447.47 |
| L147 | -87 279.13 | 3 229 114.25 | | R147 | -83 186.69 3 228 529.29 |
| L148 | -87 279.25 | 3 229 114.27 | | R148 | -83 675.19 3 228 603.23 |
| L149 | -87 808.15 | 3 229 194.25 | | R149 | -84 534.46 3 228 733.12 |
| L150 | -87 984.66 | 3 229 220.85 | | R150 | -84 574.66 3 228 739.20 |
| L151 | -88 511.16 | 3 229 300.14 | | R151 | -85 000.53 3 228 803.21 |
| L152 | -89 156.38 | 3 229 396.94 | | R152 | -85 001.30 3 228 803.33 |
| L153 | -89 156.72 | 3 229 397.00 | | R153 | -85 506.92 3 228 879.17 |

Vel
Sheet

21

Van
of

25

P1147/19

| PADRESERWE KOÖRDINATE / ROAD RESERVE CO-ORDINATES | | | | | |
|---|------------|--------------|----------------------------|------|-------------------------|
| LINKERKANT/LEFT HAND SIDE | | | REGTERKANT/RIGHT HAND SIDE | | |
| | Y | X | WG 25° | Y | X |
| L154 | -89 605.65 | 3 229 464.72 | | R154 | -85 981.58 3 228 950.67 |
| L155 | -90 006.99 | 3 229 525.03 | | R155 | -86 163.62 3 228 978.09 |
| L156 | -90 374.79 | 3 229 580.30 | | R156 | -86 745.39 3 229 065.82 |
| L157 | -90 425.61 | 3 229 572.82 | | R157 | -87 264.42 3 229 144.40 |
| L158 | -90 455.01 | 3 229 577.26 | | R158 | -87 264.48 3 229 144.41 |
| L159 | -90 495.07 | 3 229 598.46 | | R159 | -87 750.86 3 229 217.53 |
| L160 | -90 698.46 | 3 229 629.12 | | R160 | -88 124.77 3 229 274.23 |
| L161 | -90 971.57 | 3 229 670.21 | | R161 | -88 489.87 3 229 329.30 |
| L162 | -91 551.14 | 3 229 757.91 | | R162 | -88 503.44 3 229 331.41 |
| L163 | -92 372.71 | 3 229 882.36 | | R163 | -89 078.98 3 229 417.28 |
| L164 | -92 731.76 | 3 229 936.62 | | R164 | -89 104.14 3 229 430.61 |
| L165 | -93 100.54 | 3 229 992.29 | | R165 | -89 118.86 3 229 438.40 |
| L166 | -93 163.71 | 3 230 001.65 | | R166 | -89 147.38 3 229 442.67 |
| L167 | -93 418.76 | 3 230 039.47 | | R167 | -89 195.62 3 229 434.79 |
| L168 | -93 592.42 | 3 230 066.03 | | R168 | -89 601.55 3 229 495.78 |
| L169 | -93 837.77 | 3 230 103.04 | | R169 | -90 003.39 3 229 556.19 |
| L170 | -93 837.99 | 3 230 100.91 | | R170 | -90 361.36 3 229 610.22 |
| L171 | -93 983.38 | 3 230 123.21 | | R171 | -90 401.17 3 229 631.40 |
| L172 | -94 130.07 | 3 230 120.73 | | R172 | -90 429.80 3 229 636.04 |
| L173 | -94 274.70 | 3 230 094.45 | | R173 | -90 482.43 3 229 628.92 |
| L174 | -94 412.49 | 3 230 044.95 | | R174 | -90 693.60 3 229 660.61 |
| L175 | -94 532.35 | 3 229 977.91 | | R175 | -90 967.19 3 229 702.08 |
| L176 | -94 794.29 | 3 229 827.52 | | R176 | -91 662.92 3 229 807.20 |
| L177 | -94 918.49 | 3 229 756.42 | | R177 | -92 049.41 3 229 865.63 |
| L178 | -95 040.01 | 3 229 686.86 | | R178 | -92 367.51 3 229 913.14 |
| L179 | -95 369.73 | 3 229 498.30 | | R179 | -92 726.74 3 229 967.58 |
| L180 | -95 610.24 | 3 229 360.61 | | R180 | -93 155.46 3 230 032.47 |
| L181 | -95 792.91 | 3 229 256.51 | | R181 | -93 156.52 3 230 032.63 |
| L182 | -95 948.79 | 3 229 168.38 | | R182 | -93 555.08 3 230 092.85 |
| L183 | -95 990.71 | 3 229 127.26 | | R183 | -93 870.13 3 230 140.08 |
| L184 | -96 004.40 | 3 229 119.45 | | R184 | -94 045.30 3 230 163.64 |
| L185 | -96 025.33 | 3 229 107.50 | | R185 | -94 093.17 3 230 165.77 |
| L186 | -96 040.54 | 3 229 098.82 | | R186 | -94 157.29 3 230 164.84 |
| L187 | -96 085.07 | 3 229 091.08 | | R187 | -94 216.31 3 230 156.05 |
| L188 | -96 274.05 | 3 228 982.96 | | R188 | -94 296.65 3 230 134.45 |
| L189 | -96 585.20 | 3 228 805.23 | | R189 | -94 355.95 3 230 110.58 |
| L190 | -97 020.13 | 3 228 556.54 | | R190 | -94 428.80 3 230 072.92 |
| L191 | -97 109.24 | 3 228 509.63 | | R191 | -94 457.54 3 230 056.55 |
| L192 | -97 233.29 | 3 228 455.36 | | R192 | -94 757.31 3 229 885.48 |
| L193 | -97 603.45 | 3 228 307.76 | | R193 | -94 802.63 3 229 876.94 |
| L194 | -97 639.68 | 3 228 277.16 | | R194 | -94 816.59 3 229 868.98 |
| L195 | -97 654.54 | 3 228 271.23 | | R195 | -94 849.42 3 229 833.02 |
| L196 | -97 688.90 | 3 228 269.25 | | R196 | -94 935.24 3 229 784.37 |
| | | | | R197 | -94 998.72 3 229 748.39 |
| | | | | R198 | -95 284.90 3 229 584.87 |
| | | | | R199 | -95 627.66 3 229 389.08 |
| | | | | R200 | -96 019.79 3 229 165.12 |
| | | | | R201 | -96 029.43 3 229 159.61 |
| | | | | R202 | -96 289.92 3 229 010.80 |
| | | | | R203 | -96 569.57 3 228 850.24 |
| | | | | R204 | -97 035.67 3 228 583.53 |

Vel
Sheet

22

Van
of

25

P1147/19

| PADRESERWE KOÖRDINATE / ROAD RESERVE CO-ORDINATES | | | | | |
|---|-----------|--------------|----------------------------|--------------|--------------|
| LINKERKANT/LEFT HAND SIDE | | | REGTERKANT/RIGHT HAND SIDE | | |
| Y | X | WG 25° | Y | X | |
| | | | R205 | -97 118.45 | 3 228 540.61 |
| | | | R206 | -97 125.00 | 3 228 537.91 |
| | | | R207 | -97 607.51 | 3 228 341.17 |
| | | | R208 | -97 654.79 | 3 228 338.21 |
| | | | R209 | -97 670.16 | 3 228 331.99 |
| | | | R210 | -97 679.99 | 3 228 323.60 |
| LINKERKANT/LEFT HAND SIDE | | | REGTERKANT/RIGHT HAND SIDE | | |
| Y | X | WG 27° | Y | X | |
| L197 | 96 865.65 | 3 228 261.32 | R211 | 96 860.96 | 3 228 294.02 |
| L198 | 96 420.57 | 3 228 075.38 | R212 | 96 562.31 | 3 228 168.52 |
| L199 | 96 070.94 | 3 227 927.82 | R213 | 96 133.36 | 3 227 988.61 |
| L200 | 95 858.43 | 3 227 838.27 | R214 | 95 515.61 | 3 227 729.19 |
| L201 | 95 496.88 | 3 227 686.73 | R215 | 95 084.72 | 3 227 549.82 |
| L202 | 95 208.47 | 3 227 565.97 | R216 | 95 030.76 | 3 227 531.96 |
| L203 | 95 038.75 | 3 227 500.73 | R217 | 94 991.07 | 3 227 521.24 |
| L204 | 95 023.83 | 3 227 496.46 | R218 | 94 920.94 | 3 227 506.49 |
| L205 | 94 914.14 | 3 227 473.42 | R219 | 94 853.06 | 3 227 498.83 |
| L206 | 94 834.94 | 3 227 465.11 | R220 | 94 336.35 | 3 227 460.07 |
| L207 | 94 359.46 | 3 227 430.68 | R221 | 93 827.03 | 3 227 423.30 |
| L208 | 93 904.26 | 3 227 396.19 | R222 | 93 821.53 | 3 227 422.88 |
| L209 | 93 741.89 | 3 227 384.42 | R223 | 93 446.54 | 3 227 394.53 |
| L210 | 93 629.31 | 3 227 376.27 | R224 | 93 062.16 | 3 227 366.16 |
| L211 | 93 423.69 | 3 227 361.37 | R225 | 92 952.07 | 3 227 358.03 |
| L212 | 92 970.98 | 3 227 327.42 | R226 | 92 951.63 | 3 227 358.00 |
| L213 | 92 469.18 | 3 227 290.67 | R227 | 92 803.58 | 3 227 347.64 |
| L214 | 92 384.62 | 3 227 284.68 | R228 | 92 509.84 | 3 227 326.01 |
| L215 | 92 256.85 | 3 227 274.95 | R229 | 92 481.80 | 3 227 323.84 |
| L216 | 92 179.04 | 3 227 258.74 | R230 | 92 454.89 | 3 227 321.75 |
| L217 | 92 156.07 | 3 227 253.94 | R231 | 92 254.51 | 3 227 306.90 |
| L218 | 92 155.62 | 3 227 253.85 | R232 | 92 164.88 | 3 227 299.56 |
| L219 | 92 093.05 | 3 227 235.04 | R233 | 92 164.72 | 3 227 299.54 |
| L220 | 92 021.31 | 3 227 206.41 | R234 | 92 140.50 | 3 227 293.18 |
| L221 | 91 936.91 | 3 227 159.44 | R235 | 92 077.70 | 3 227 278.37 |
| L222 | 91 885.33 | 3 227 119.61 | R236 | 91 998.27 | 3 227 253.62 |
| L223 | 91 884.75 | 3 227 119.12 | R237 | 91 899.49 | 3 227 200.57 |
| L224 | 91 858.22 | 3 227 096.85 | R238 | 91 829.70 | 3 227 147.80 |
| L225 | 91 751.35 | 3 226 990.07 | R239 | 91 829.06 | 3 227 147.32 |
| L226 | 91 740.42 | 3 226 975.18 | R240 | 91 811.27 | 3 227 123.07 |
| L227 | 91 726.04 | 3 226 936.71 | R241 | 91 810.07 | 3 227 121.81 |
| L228 | 91 663.36 | 3 226 808.85 | R242 | 91 769.28 | 3 227 078.65 |
| L229 | 91 661.74 | 3 226 804.91 | R243 | 91 715.04 | 3 227 005.47 |
| L230 | 91 592.03 | 3 226 605.99 | R244 | 91 705.08 | 3 226 991.49 |
| L231 | 91 555.02 | 3 226 520.65 | R245 | 91 683.46 | 3 226 961.82 |
| L232 | 91 517.65 | 3 226 450.97 | R246 | 91 664.34 | 3 226 925.74 |
| L233 | 91 490.01 | 3 226 412.89 | R247 | 91 623.45 | 3 226 821.98 |
| L234 | 91 423.25 | 3 226 333.73 | R248 | 91 599.36 | 3 226 732.69 |
| L235 | 91 363.32 | 3 226 274.11 | R249 | 91 560.67 | 3 226 616.30 |
| | | | Vel Sheet | 23 Van of 25 | P1147/19 |

| PADRESERWE KOÖRDINATE / ROAD RESERVE CO-ORDINATES | | | | | | |
|---|-----------|-------|--------|----------------------------|-----------|--------------|
| LINKERKANT/LEFT HAND SIDE | | | | REGTERKANT/RIGHT HAND SIDE | | |
| | Y | X | WG 27° | | Y | X |
| L236 | 91 303.65 | 3 226 | 230.73 | R250 | 91 534.01 | 3 226 548.02 |
| L237 | 91 266.36 | 3 226 | 207.78 | R251 | 91 500.15 | 3 226 485.82 |
| L238 | 91 155.15 | 3 226 | 158.46 | R252 | 91 452.18 | 3 226 415.37 |
| L239 | 91 083.47 | 3 226 | 136.38 | R253 | 91 400.88 | 3 226 356.91 |
| L240 | 90 835.93 | 3 226 | 075.84 | R254 | 91 343.84 | 3 226 303.65 |
| L241 | 90 672.71 | 3 226 | 035.97 | R255 | 91 287.07 | 3 226 263.18 |
| L242 | 90 383.73 | 3 225 | 965.18 | R256 | 91 214.41 | 3 226 221.67 |
| L243 | 90 238.41 | 3 225 | 929.34 | R257 | 91 141.06 | 3 226 191.28 |
| L244 | 90 124.48 | 3 225 | 894.73 | R258 | 91 075.42 | 3 226 171.54 |
| L245 | 89 864.44 | 3 225 | 830.18 | R259 | 90 830.01 | 3 226 111.56 |
| L246 | 89 862.55 | 3 225 | 829.71 | R260 | 90 656.96 | 3 226 065.40 |
| L247 | 89 694.73 | 3 225 | 797.07 | R261 | 90 384.53 | 3 225 998.82 |
| L248 | 89 482.30 | 3 225 | 745.48 | R262 | 90 241.33 | 3 225 963.82 |
| L249 | 89 427.54 | 3 225 | 732.08 | R263 | 90 112.79 | 3 225 943.31 |
| L250 | 89 044.34 | 3 225 | 638.31 | R264 | 89 886.91 | 3 225 892.89 |
| L251 | 89 034.68 | 3 225 | 635.95 | R265 | 89 886.30 | 3 225 892.75 |
| L252 | 89 033.24 | 3 225 | 633.19 | R266 | 89 703.24 | 3 225 844.19 |
| L253 | 89 018.67 | 3 225 | 629.61 | R267 | 89 589.90 | 3 225 804.89 |
| L254 | 88 683.51 | 3 225 | 547.14 | R268 | 89 460.51 | 3 225 773.14 |
| L255 | 88 396.76 | 3 225 | 477.73 | R269 | 89 060.95 | 3 225 675.51 |
| L256 | 88 380.99 | 3 225 | 473.85 | R270 | 89 050.96 | 3 225 673.07 |
| L257 | 88 109.93 | 3 225 | 407.95 | R271 | 88 814.98 | 3 225 645.69 |
| L258 | 88 036.62 | 3 225 | 390.13 | R272 | 88 788.77 | 3 225 639.34 |
| L259 | 87 962.05 | 3 225 | 371.96 | R273 | 88 686.37 | 3 225 614.55 |
| L260 | 87 766.45 | 3 225 | 324.06 | R274 | 88 399.60 | 3 225 544.90 |
| L261 | 87 766.32 | 3 225 | 324.03 | R275 | 88 399.69 | 3 225 547.11 |
| L262 | 87 621.58 | 3 225 | 288.52 | R276 | 88 112.85 | 3 225 476.76 |
| L263 | 87 479.96 | 3 225 | 253.79 | R277 | 88 112.75 | 3 225 474.43 |
| L264 | 87 393.78 | 3 225 | 232.65 | R278 | 88 017.16 | 3 225 451.09 |
| L265 | 87 193.47 | 3 225 | 183.90 | R279 | 87 826.28 | 3 225 404.45 |
| L266 | 87 193.32 | 3 225 | 183.86 | R280 | 87 826.00 | 3 225 404.38 |
| L267 | 86 907.01 | 3 225 | 114.23 | R281 | 87 733.03 | 3 225 381.66 |
| L268 | 86 906.20 | 3 225 | 114.03 | R282 | 87 732.78 | 3 225 381.60 |
| L269 | 86 877.03 | 3 225 | 106.94 | R283 | 87 620.27 | 3 225 354.12 |
| L270 | 86 665.08 | 3 225 | 054.71 | R284 | 87 619.89 | 3 225 354.03 |
| L271 | 86 664.68 | 3 225 | 054.61 | R285 | 87 482.79 | 3 225 320.55 |
| L272 | 86 543.42 | 3 225 | 025.13 | R286 | 87 312.93 | 3 225 279.06 |
| L273 | 86 543.20 | 3 225 | 025.07 | R287 | 87 196.39 | 3 225 250.71 |
| L274 | 86 447.43 | 3 225 | 001.73 | R288 | 87 002.96 | 3 225 203.50 |
| L275 | 86 446.83 | 3 225 | 001.59 | R289 | 86 909.84 | 3 225 180.87 |
| L276 | 86 394.81 | 3 224 | 988.89 | R290 | 86 909.30 | 3 225 180.74 |
| L277 | 86 331.55 | 3 224 | 973.31 | R291 | 86 624.79 | 3 225 111.15 |
| L278 | 86 003.19 | 3 224 | 893.31 | R292 | 86 608.57 | 3 225 107.19 |
| L279 | 85 591.17 | 3 224 | 792.63 | R293 | 86 510.50 | 3 225 083.32 |
| L280 | 85 502.34 | 3 224 | 770.73 | R294 | 86 448.90 | 3 225 068.33 |
| L281 | 85 486.24 | 3 224 | 766.77 | R295 | 86 448.90 | 3 225 068.58 |
| L282 | 85 471.12 | 3 224 | 763.07 | R296 | 86 330.39 | 3 225 037.57 |
| L283 | 85 455.68 | 3 224 | 759.30 | R297 | 86 330.86 | 3 225 039.56 |
| L284 | 85 440.99 | 3 224 | 755.70 | R298 | 86 322.29 | 3 225 037.46 |
| L285 | 84 990.48 | 3 224 | 645.94 | R299 | 86 289.79 | 3 225 029.52 |
| L286 | 84 652.16 | 3 224 | 563.36 | R300 | 86 148.84 | 3 224 994.88 |

Vel Sheet 24 Van of 25

P1147/19

| PADRESERWE KOÖRDINATE / ROAD RESERVE CO-ORDINATES | | | | | | |
|---|-----------|--------------|--------|----------------------------|-----------|--------------|
| LINKERKANT/LEFT HAND SIDE | | | | REGTERKANT/RIGHT HAND SIDE | | |
| | Y | X | WG 27° | Y | X | |
| L287 | 84 539.62 | 3 224 535.88 | | R301 | 86 148.33 | 3 224 994.75 |
| L288 | 84 314.40 | 3 224 480.68 | | R302 | 86 017.31 | 3 224 962.69 |
| L289 | 84 314.08 | 3 224 480.60 | | R303 | 86 009.72 | 3 224 960.83 |
| L290 | 84 206.93 | 3 224 454.49 | | R304 | 85 910.76 | 3 224 936.68 |
| L291 | 84 139.88 | 3 224 438.05 | | R305 | 85 732.83 | 3 224 893.22 |
| L292 | 84 139.15 | 3 224 437.87 | | R306 | 85 534.20 | 3 224 844.71 |
| L293 | 83 947.77 | 3 224 391.07 | | R307 | 85 434.48 | 3 224 820.24 |
| L294 | 83 947.36 | 3 224 390.97 | | R308 | 85 434.43 | 3 224 820.23 |
| L295 | 83 782.23 | 3 224 350.68 | | R309 | 85 210.34 | 3 224 765.64 |
| L296 | 83 782.01 | 3 224 350.62 | | R310 | 85 135.45 | 3 224 747.35 |
| L297 | 83 721.04 | 3 224 335.79 | | R311 | 85 135.10 | 3 224 747.27 |
| L298 | 83 633.50 | 3 224 314.37 | | R312 | 85 022.48 | 3 224 719.76 |
| L299 | 83 633.08 | 3 224 314.26 | | R313 | 84 745.17 | 3 224 652.02 |
| L300 | 83 493.41 | 3 224 280.30 | | R314 | 84 539.74 | 3 224 601.88 |
| L301 | 83 413.45 | 3 224 260.68 | | R315 | 84 539.15 | 3 224 601.73 |
| L302 | 83 372.02 | 3 224 250.55 | | R316 | 84 103.65 | 3 224 495.63 |
| L303 | 83 368.44 | 3 224 249.67 | | R317 | 84 089.46 | 3 224 492.13 |
| L304 | 83 279.19 | 3 224 227.71 | | R318 | 84 074.21 | 3 224 488.37 |
| L305 | 83 161.53 | 3 224 187.79 | | R319 | 84 058.84 | 3 224 484.58 |
| L306 | 83 147.06 | 3 224 182.99 | | R320 | 83 734.61 | 3 224 405.07 |
| L307 | 83 101.98 | 3 224 168.04 | | R321 | 83 627.95 | 3 224 378.97 |
| L308 | 83 037.82 | 3 224 145.48 | | R322 | 83 618.45 | 3 224 376.65 |
| L309 | 83 008.20 | 3 224 128.78 | | R323 | 83 520.20 | 3 224 352.60 |
| L310 | 83 000.45 | 3 224 124.81 | | R324 | 83 519.93 | 3 224 352.53 |
| L311 | 82 985.31 | 3 224 120.61 | | R325 | 83 432.62 | 3 224 331.11 |
| L312 | 82 962.02 | 3 224 115.49 | | R326 | 83 244.37 | 3 224 285.05 |
| L313 | 82 944.68 | 3 224 112.18 | | R327 | 83 244.30 | 3 224 285.03 |
| L314 | 82 940.96 | 3 224 111.47 | | R328 | 83 158.76 | 3 224 261.86 |
| L315 | 82 806.05 | 3 224 059.31 | | R329 | 83 131.77 | 3 224 254.41 |
| L316 | 82 782.00 | 3 224 050.12 | | R330 | 83 087.40 | 3 224 239.80 |
| L317 | 82 736.72 | 3 224 030.42 | | R331 | 83 049.48 | 3 224 231.52 |
| L318 | 82 528.84 | 3 223 939.96 | | R332 | 82 782.80 | 3 224 086.01 |
| L319 | 82 321.04 | 3 223 849.53 | | R333 | 82 768.22 | 3 224 077.95 |
| L320 | 82 217.07 | 3 223 804.29 | | R334 | 82 708.69 | 3 224 052.08 |
| L321 | 82 113.10 | 3 223 759.05 | | R335 | 82 652.56 | 3 224 027.68 |
| L322 | 82 083.76 | 3 223 746.28 | | R336 | 82 540.05 | 3 223 978.78 |
| L323 | 82 069.99 | 3 223 740.29 | | R337 | 82 442.50 | 3 223 936.38 |
| L324 | 81 911.08 | 3 223 671.14 | | R338 | 82 343.24 | 3 223 893.24 |
| L325 | 81 898.06 | 3 223 665.48 | | R339 | 82 278.13 | 3 223 864.94 |
| L326 | 81 745.55 | 3 223 619.24 | | R340 | 82 100.71 | 3 223 787.83 |
| | | | | R341 | 82 018.86 | 3 223 752.25 |
| | | | | R342 | 81 903.29 | 3 223 702.02 |
| | | | | R343 | 81 857.00 | 3 223 696.22 |
| | | | | R344 | 81 835.75 | 3 223 693.56 |
| | | | | R345 | 81 742.67 | 3 223 681.90 |

| | | | | |
|-----------|----|--------|----|----------|
| Vel Sheet | 25 | Van of | 25 | P1147/19 |
|-----------|----|--------|----|----------|