

DEPARTMENT OF TRANSPORT

NO. 901

21 September 2021

**THE SOUTH AFRICAN NATIONAL ROADS
AGENCY SOC LIMITED**

Registration No: 1998/009584/30

DECLARATION AMENDMENT OF NATIONAL ROAD N8 SECTION 12

AMENDMENT OF DECLARATION No. 459 OF 2009.

By virtue of Section 40 (1)(b) of The South African National Roads Agency Limited and National Roads Act, 1998 (Act No. 7 of 1998), I hereby amend Declaration No. 459 of 2009 by substituting it in its entirety, with the accompanying sheets 1 to 23 of Plan No. P1142/19.

(National Road N8 Section 12: Thaba Nchu – Ladybrand)



MINISTER OF TRANSPORT

DEPARTEMENT VAN VERVOER

NO. 901

21 September 2021

**DIE SUID-AFRIKAANSE NASIONALE
PADAGENTSKAP MSB BEPERK**

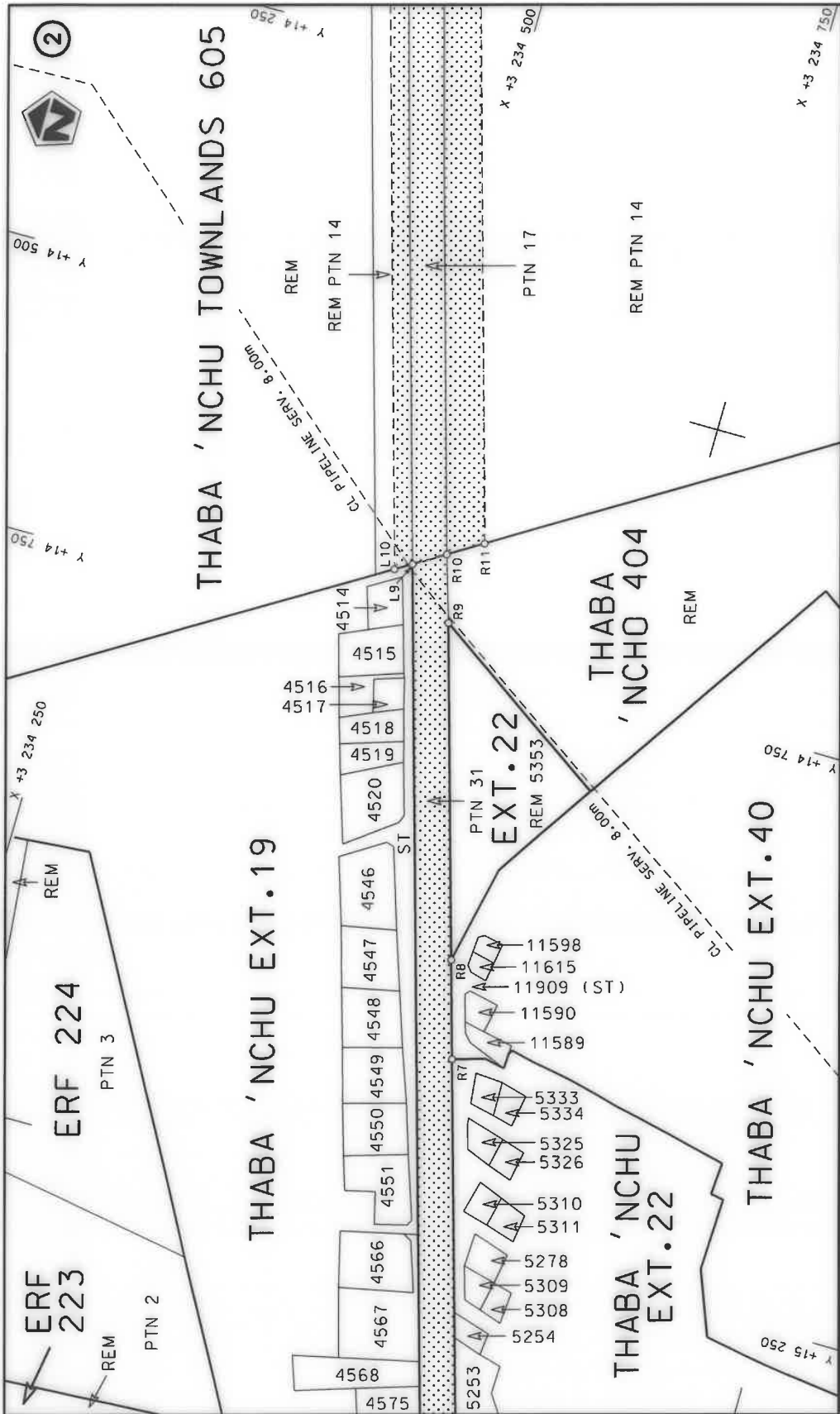
Registrasie No: 1998/009584/30


VERKLARING WYSIGING VAN NASIONALE PAD N8 SEKSIE 12

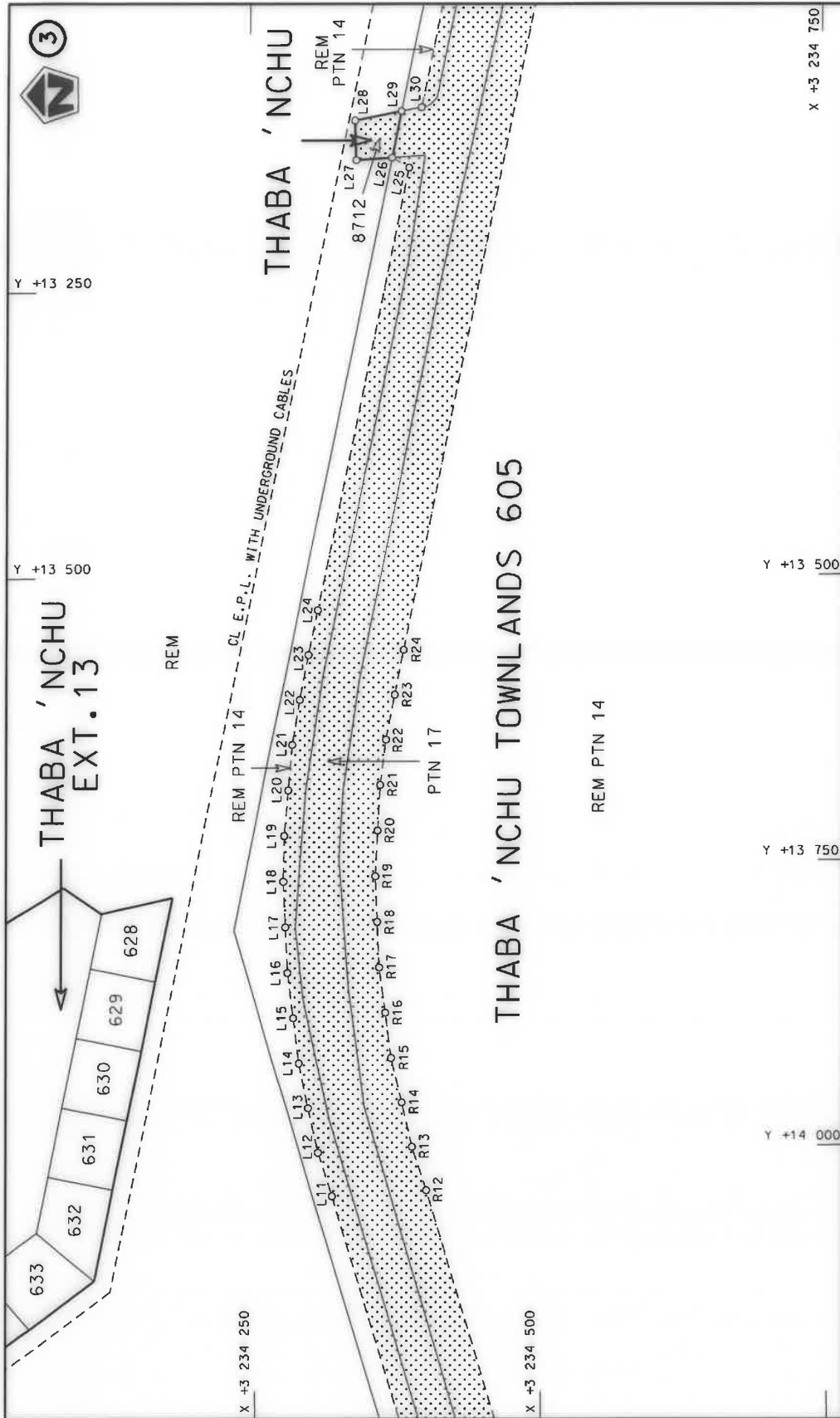
WYSIGING VAN VERKLARING No. 459 VAN 2009.

Kragtens Artikel 40(1)(b) van die Wet op die Suid-Afrikaanse Nasionale Padagentskap Beperk en op Nasionale Paaie, 1998 (Wet No. 7 van 1998), wysig ek hiermee Verklaring No. 459 van 2009 deur dit in sy geheel te vervang, met bygaande velle 1 tot 23 van Plan No. P1142/19.

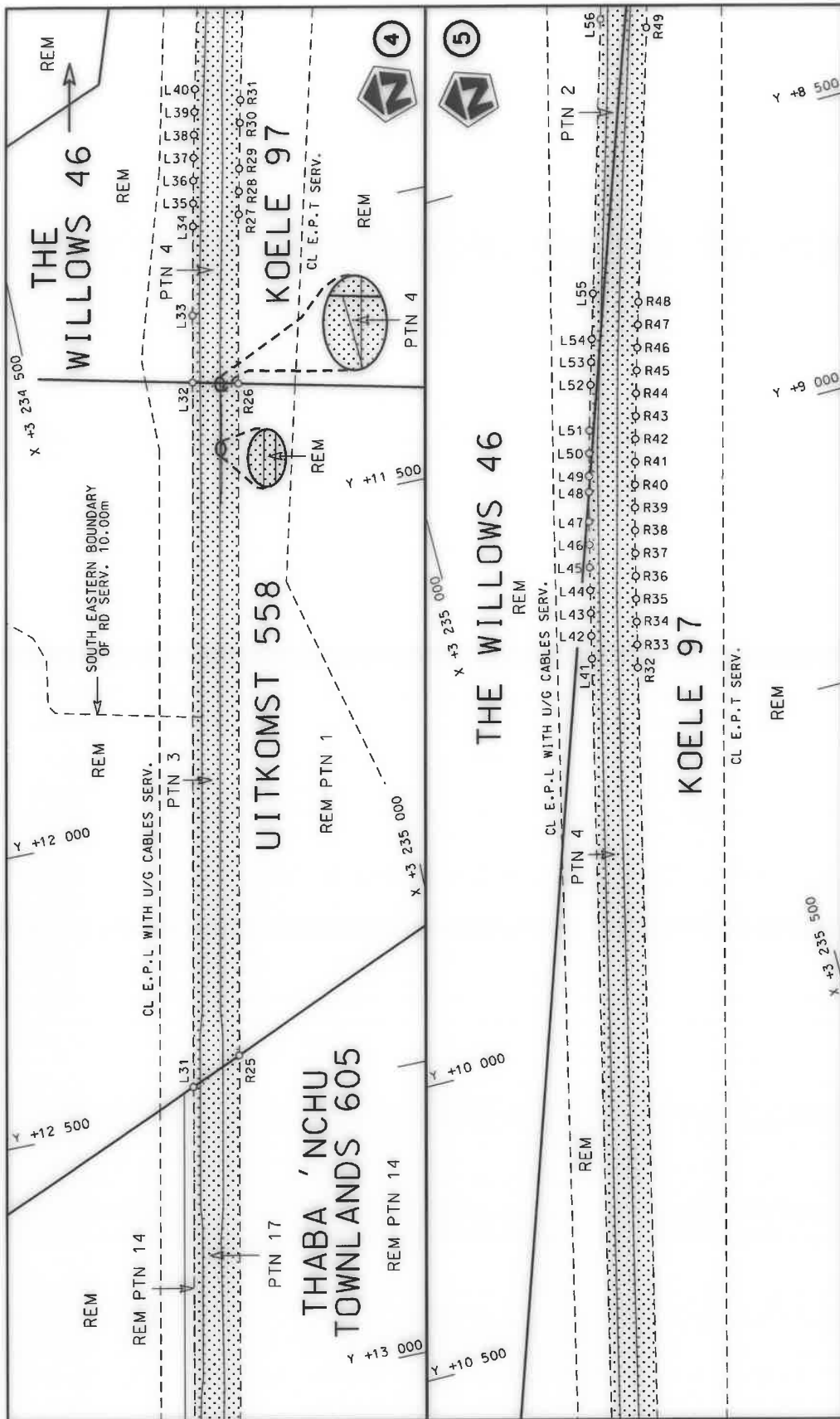
(Nasionale Pad N8 Seksie 12: Thaba Nchu – Ladybrand)**MINISTER VAN VERVOER**



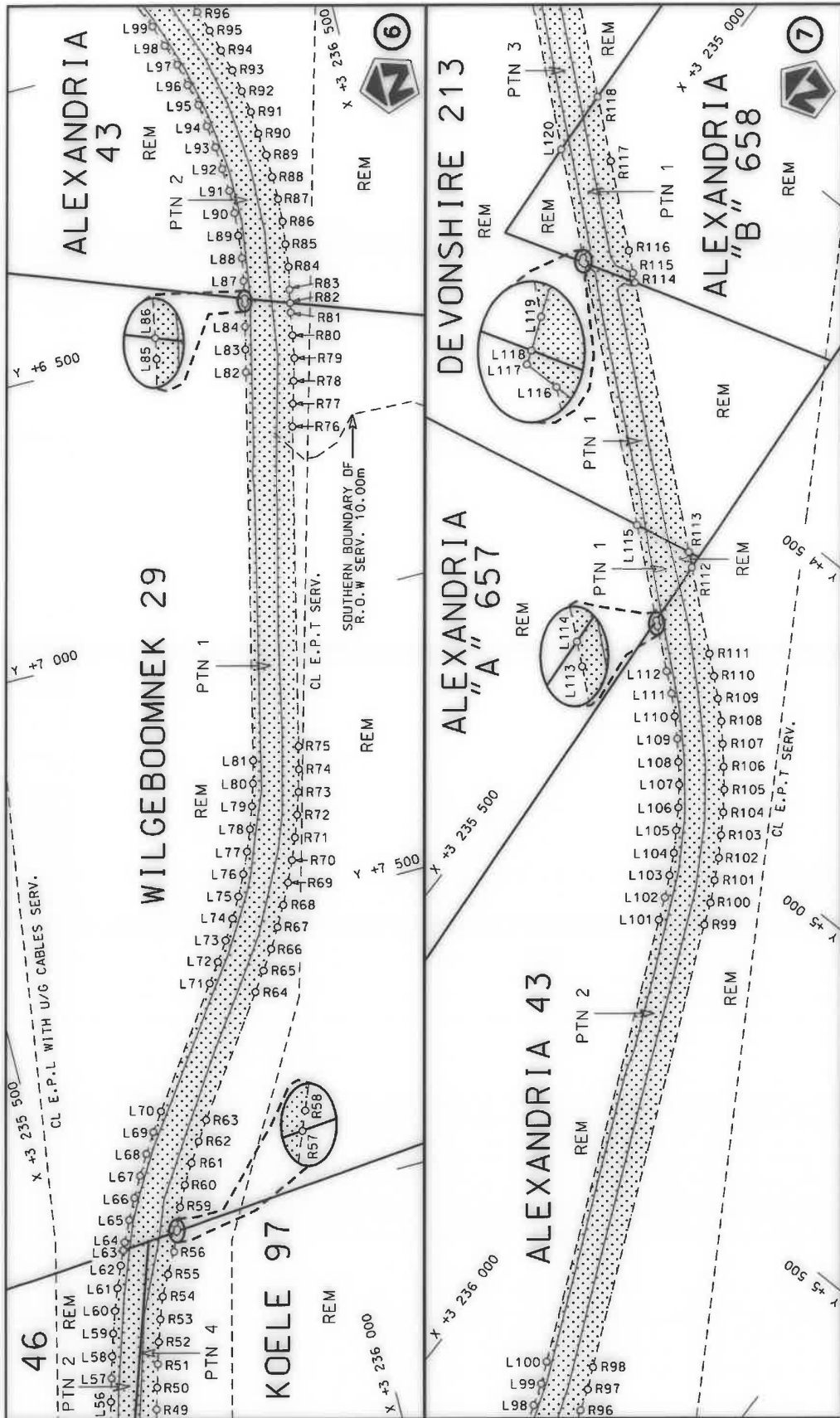
Die Suid-Afrikaanse Nasionale Padagentskap MSB Bpk The South African National Roads Agency SOC Ltd	Die figuur getoon The figure shown		steldie padreserwe voor van 'n gedeelte represents the road reserve of a portion van Nasionale Roete NB of National Route Section	Vel Sheet 2 of 23 Plan P1142/19
---	---------------------------------------	---	--	------------------------------------



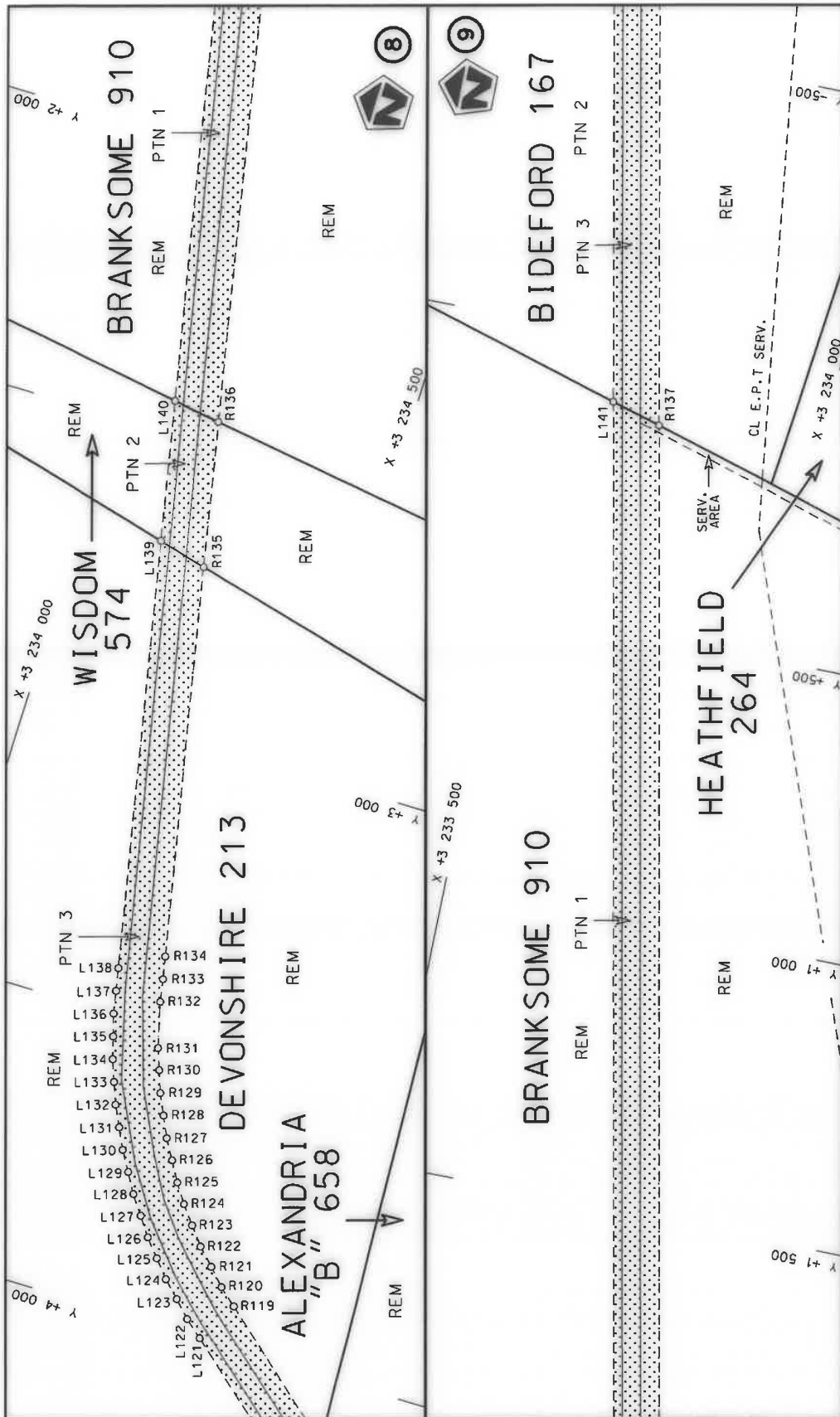
<p>Die Suid-Afrikaanse Nasionale Padogenskops MSB Bpk The South African National Roads Agency SOC Ltd</p>	<p>Die figuur getoon The figure shown</p>	<p>steeldie padreserwe voor van 'n gedeelte represents the road reserve of a portion van Nasionale Roete NB of National Route Section</p>	<p>Vel Sheet 3 of 23 Plan P1142/19</p>
---	---	---	--



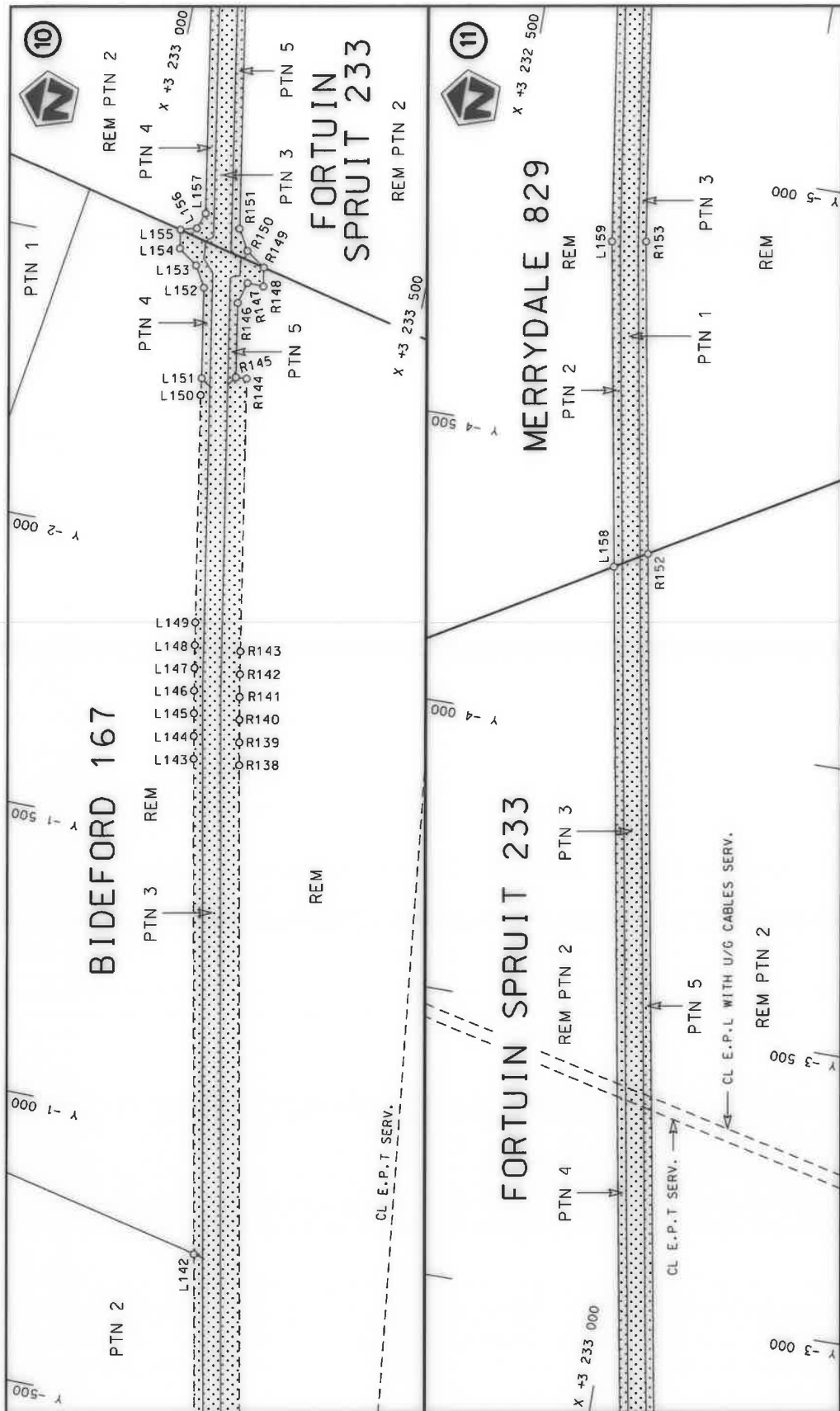
<p>Die Suid Afrikaanse Nasionale Padagentskap MSB Bpk The South African National Roads Agency SOC Ltd</p>	<p>Die figuur getoon The figure shown</p> 	<p>steldie padreserwe voor van 'n gedeelte represents the road reserve of a portion van Nasionale Roete N8 Seksie Section</p> <p>12</p>	<p>Vel Sheet 4 of 23 Plan P1142/19</p>
---	---	---	--



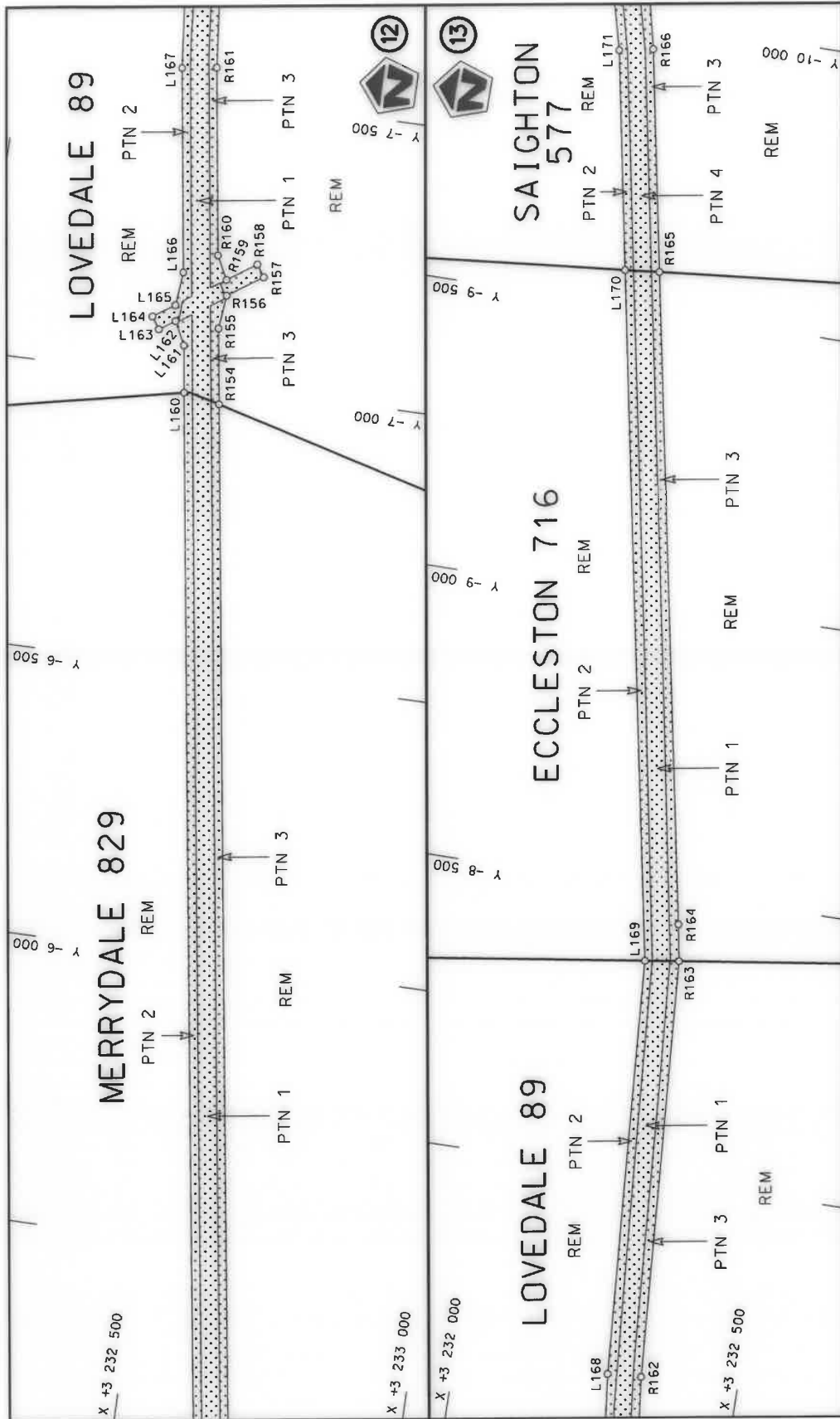
<p>Die Suid Afrikaanse Nasionale Padagentskap MSB Bpk The South African National Roads Agency SOC Ltd</p>	<p>Die figuur getoon The figure shown</p>		<p>stelt die padreserwe voor van 'n gedeelte represents the road reserve of a portion van Nasionale Roete N8 of National Route</p>	<p>Vel Sheet 5 of 23 Plan P1142/19</p>
---	---	--	--	--



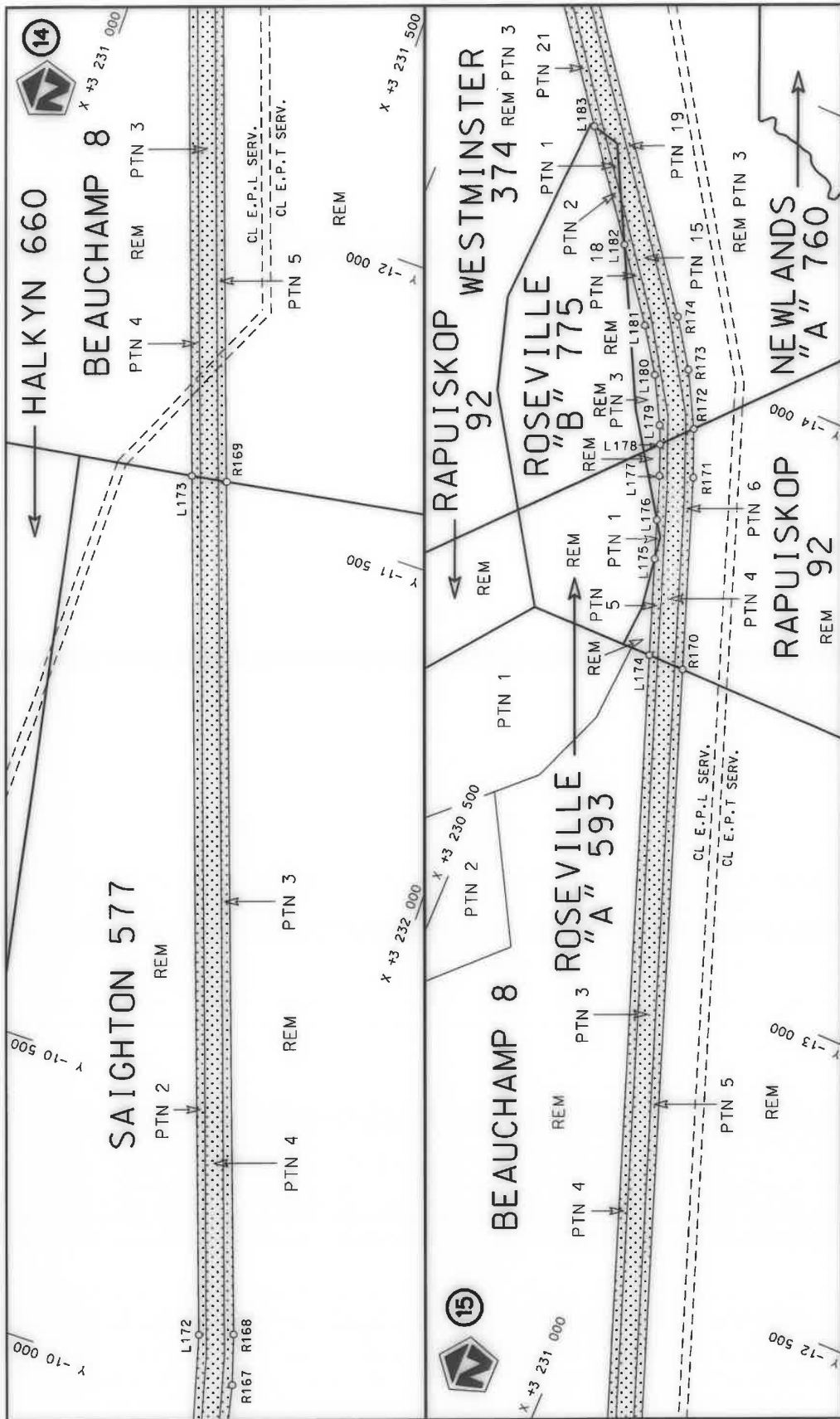
Die Suid-Afrikaanse Nasionale Padagentskap MSB Bpk The South African National Roads Agency SOC Ltd	Die figuur getoon The figure shown		steldie padreserwe voor van 'n gedeelte represents the road reserve of a portion van Nasionale Roete N8 of National Route Section	Vel Sheet	van 6 of	23
				12	Plan	P1142/19



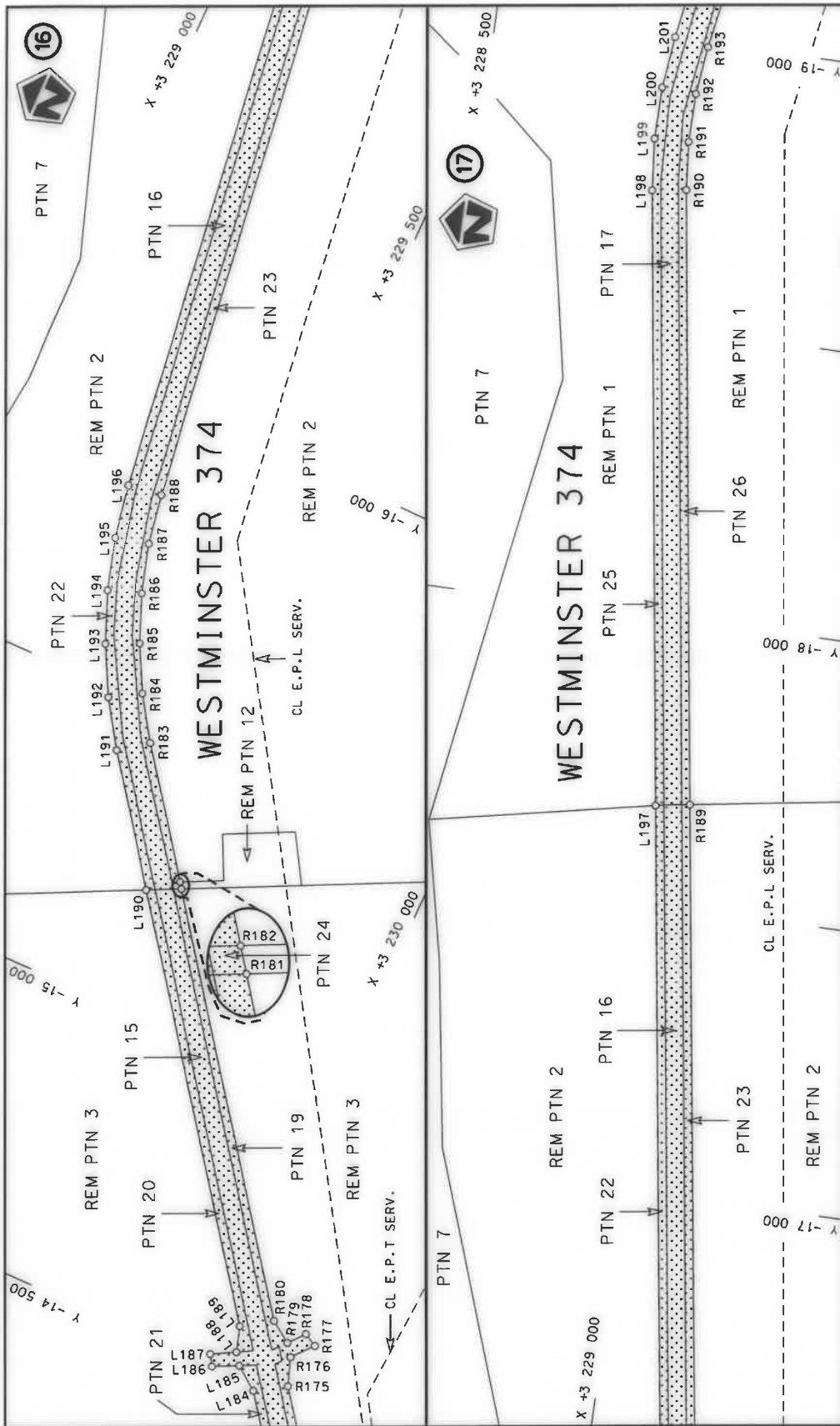
<p>Die Suid-Afrikaanse Nasionale Padagentskap MSB Bpk The South African National Roads Agency SOC Ltd</p>	<p>Die figuur getoon The figure shown</p>	<p>stelt die padreserwe voor van 'n gedeelte represents the road reserve of a portion van Nasionale Roete N8 of National Route</p>	<p>Vel Sheet 7 van 23 Plan P1142/19</p>
---	---	--	---



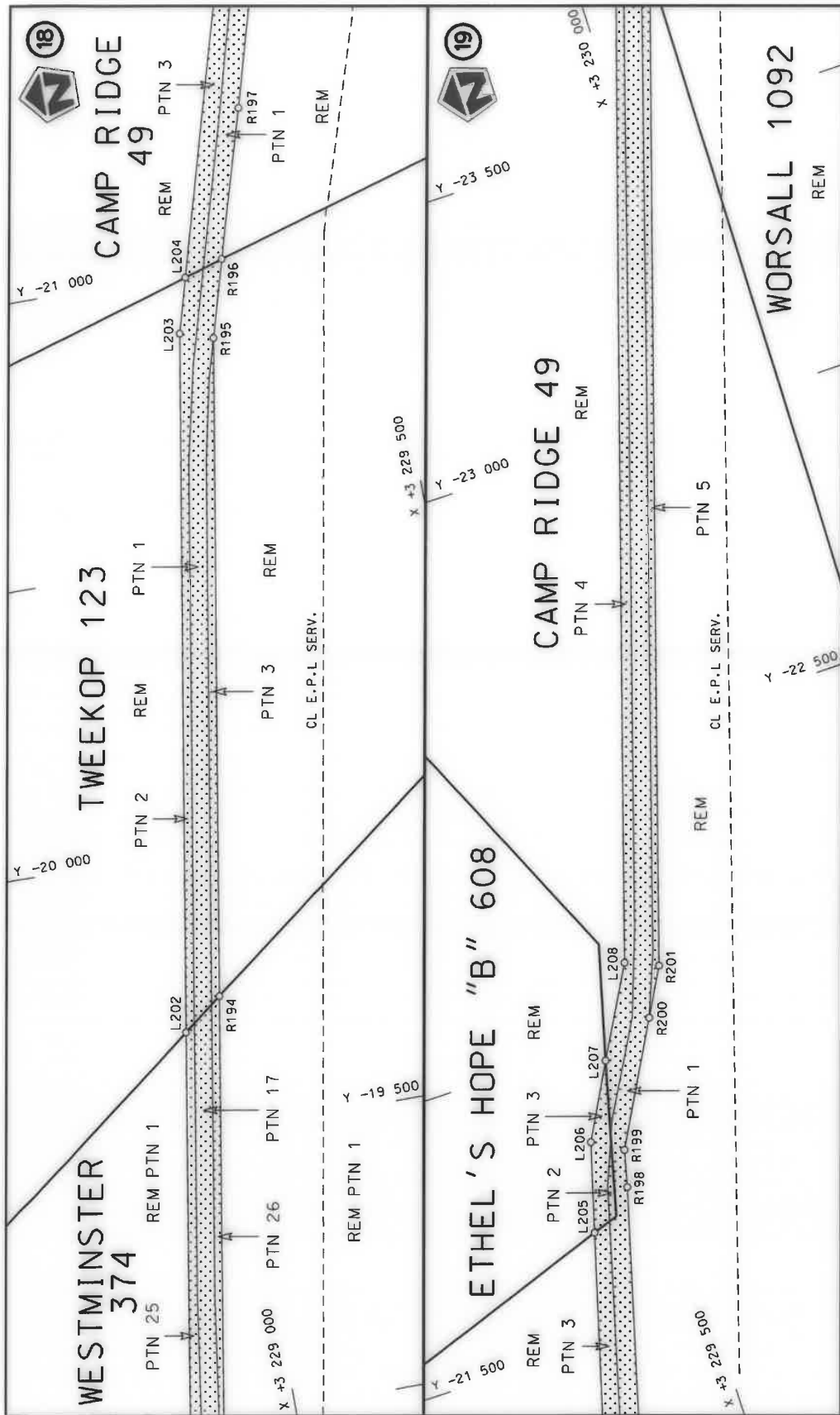
<p>Die Suid Afrikaanse Nasionale Padagentskap MSB Bpk The South African National Roads Agency SOC Ltd</p>	<p>Die figuur getoon The figure shown</p>	<p>stelt die padreserwe voor van 'n gedeelte represents the road reserve of a portion van Nasionale Roete NB of National Route</p>	<p>12</p>	<p>Plan P1142/19</p>	<p>Vel Sheet 8 of 23</p>
---	---	--	-----------	----------------------	--------------------------



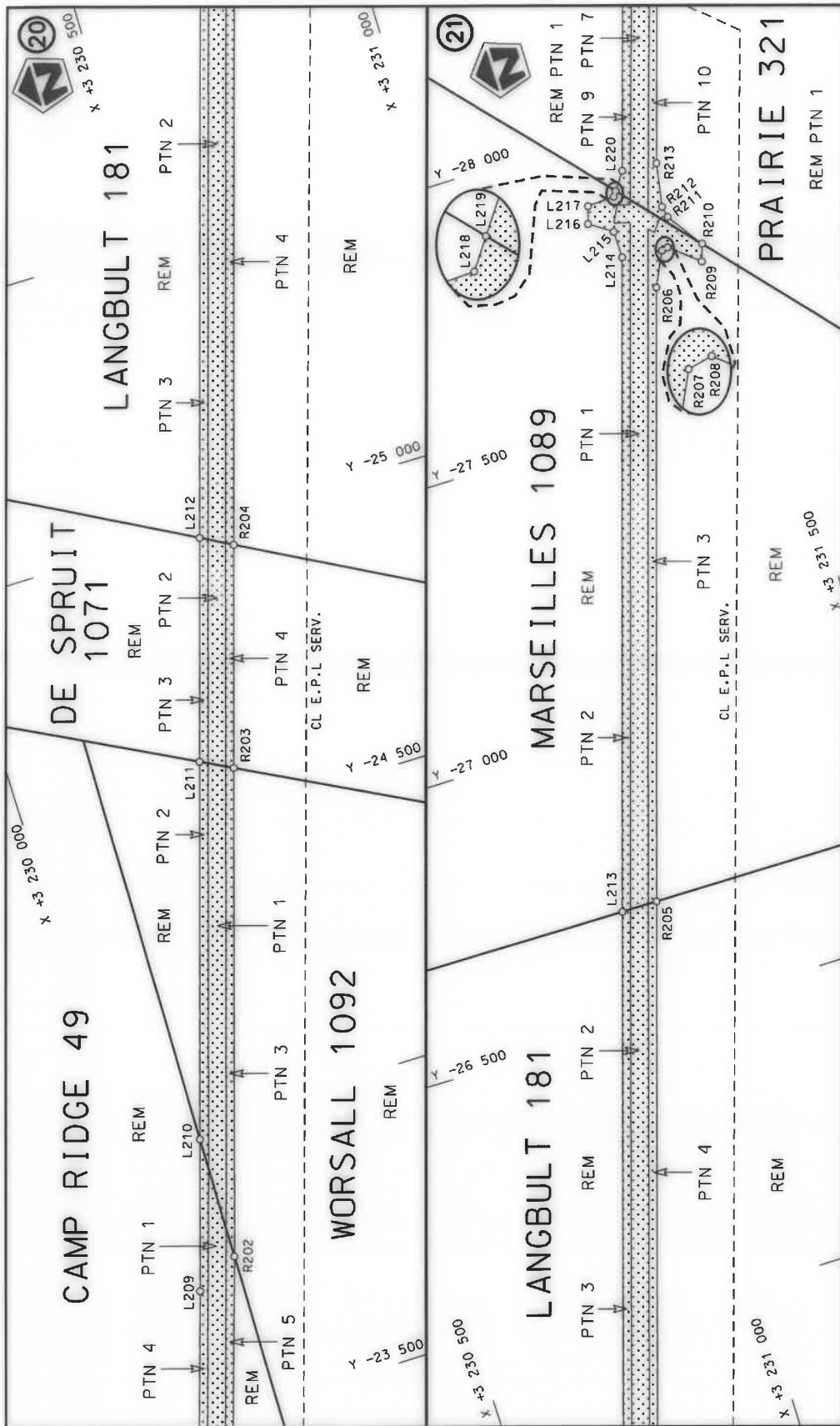
<p>Die Suid Afrikaanse Nasionale Padagentskap MSB Bpk The South African National Roads Agency SOC Ltd</p>	<p>Die figuur getoon The figure shown</p> 	<p>stelt die padreserwe voor van 'n gedeelte represents the road reserve of a portion van Nasionale Roete N8 of National Route</p>	<p>Vel Sheet 9 of 23 Plan P1142/19</p>
---	---	--	--



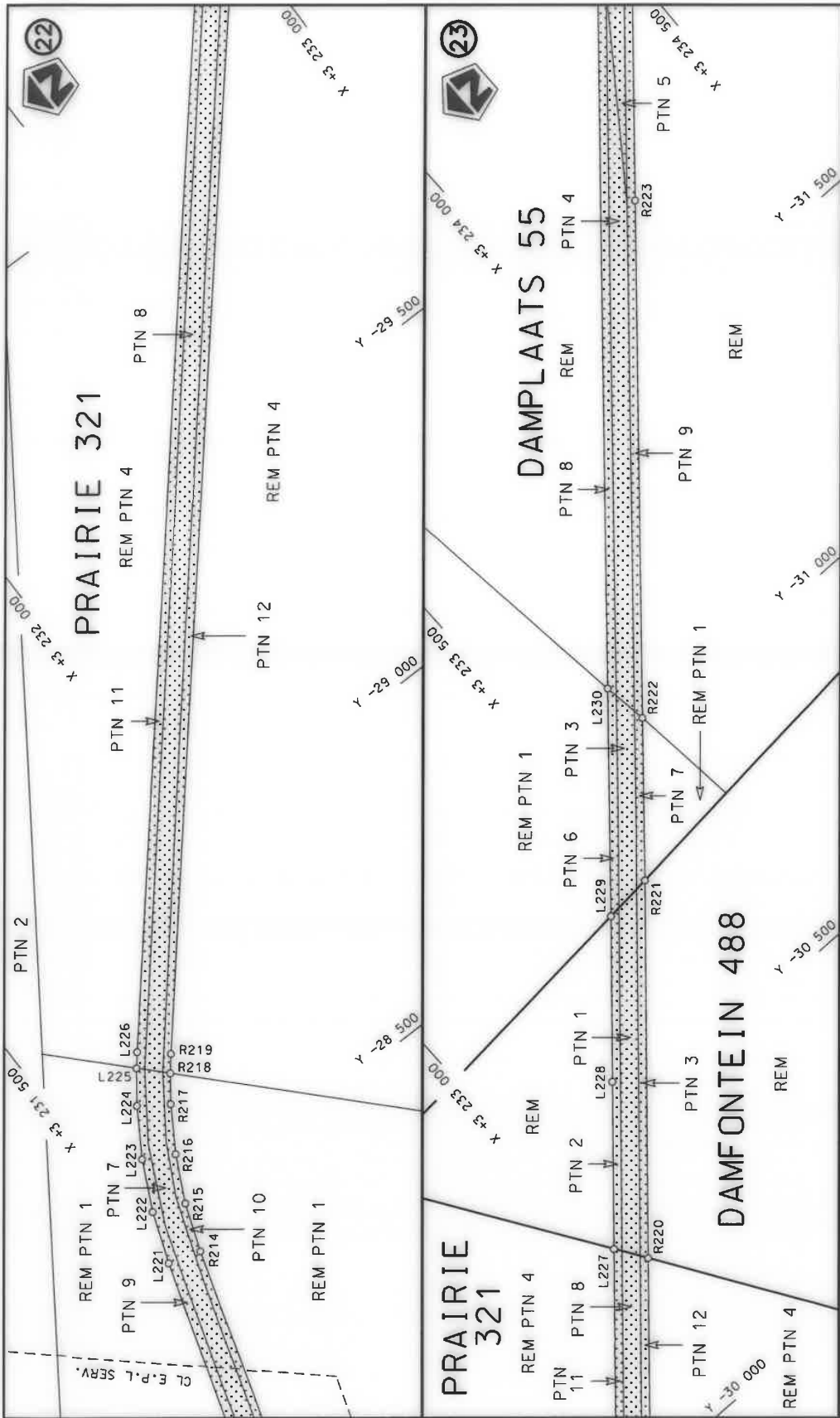
Die Suid-Afrikaanse Nasionale Padagentskap MSB Bpk The South African National Roads Agency SOC Ltd	Die figuur getoon The figure shown	steidie padreserwe voor van 'n gedeelte represents the road reserve of a portion van Nasionale Roete N8 of National Route N8	Vel Sheet 10 of 23
			Plan P1142/19



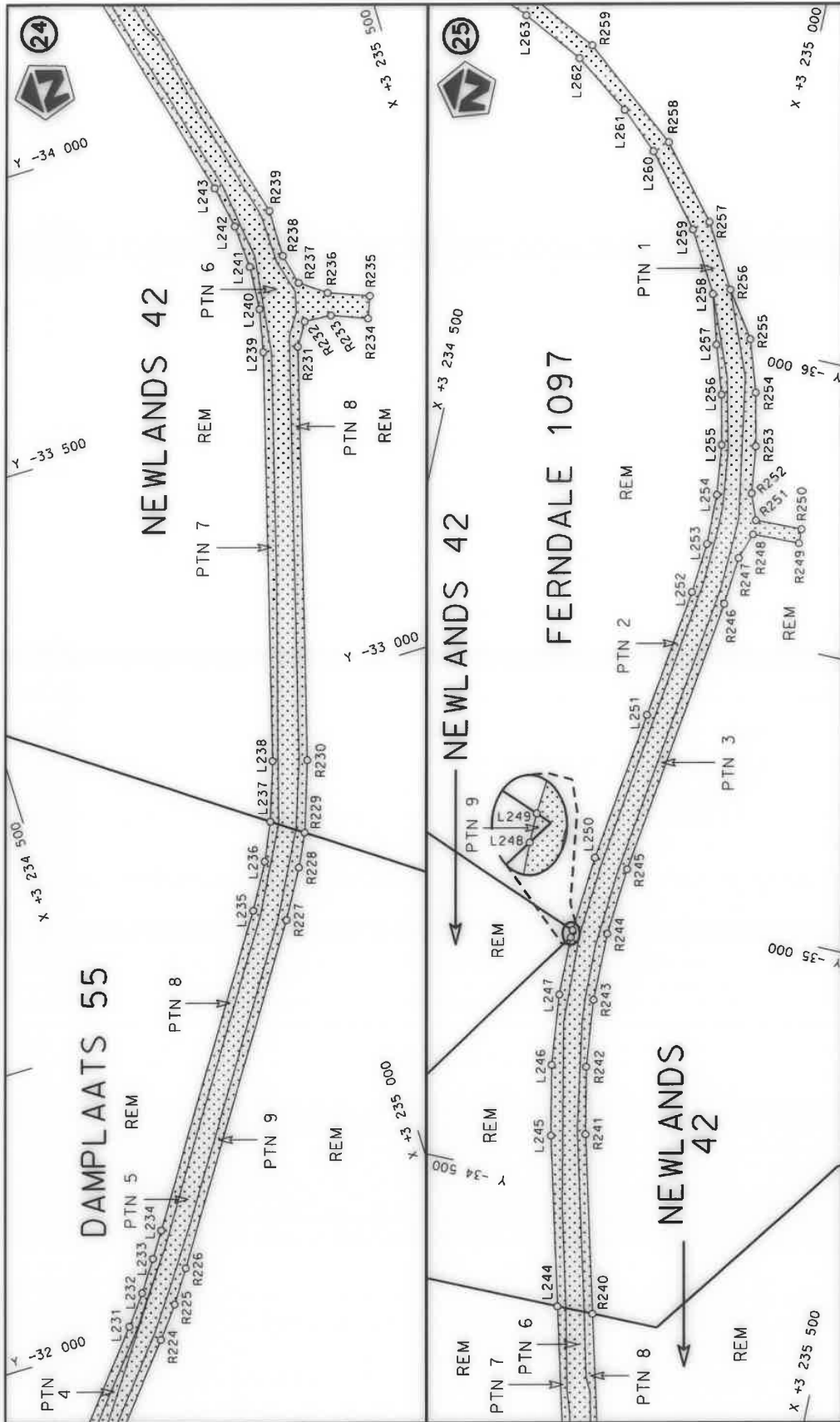
<p>Die Suid Afrikaanse Nasionale Padagentskap MSB Bpk The South African National Roads Agency SOC Ltd</p>	<p>Die figuur getoon The figure shown</p>	<p>steldie padreserwe voor van 'n gedeelte represents the road reserve of a portion van Nasionale Roete N8 Seksie N8 Section</p>	<p>Vel 11 van 23 Sheet of Plan P1142/19</p>
---	---	--	---



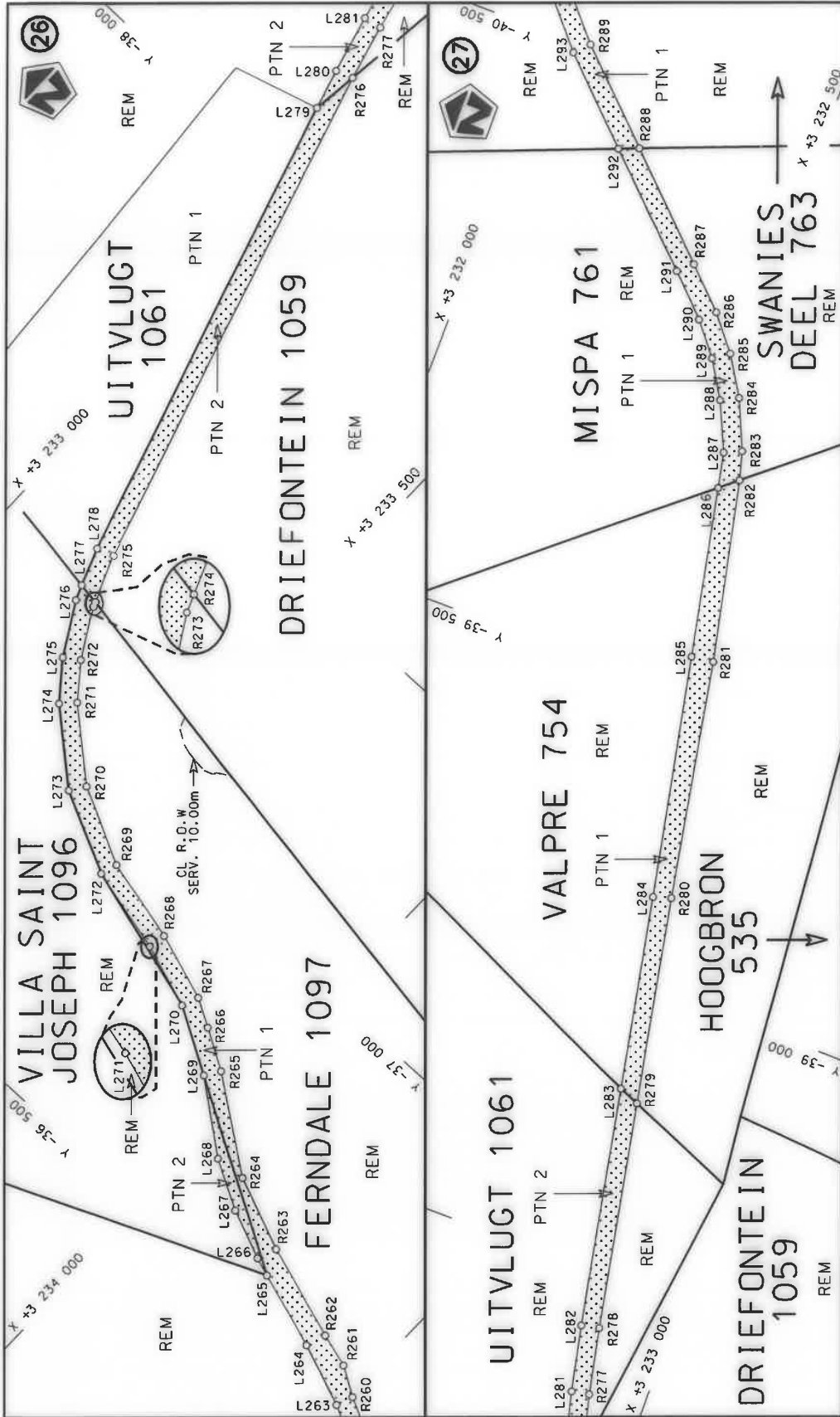
<p>Die Suid Afrikaanse Nasionale Padagentskap MSB Bpk The South African National Roads Agency SOC Ltd</p>	<p>Die figuur getoon The figure shown</p>		<p>steldie padreserwe voor van 'n gedeelte represents the road reserve of a portion van Nasionale Roete NB of National Route Section</p>	<p>Vel van Sheet 12 of 23 Plan P1142/19</p>
---	---	---	--	---



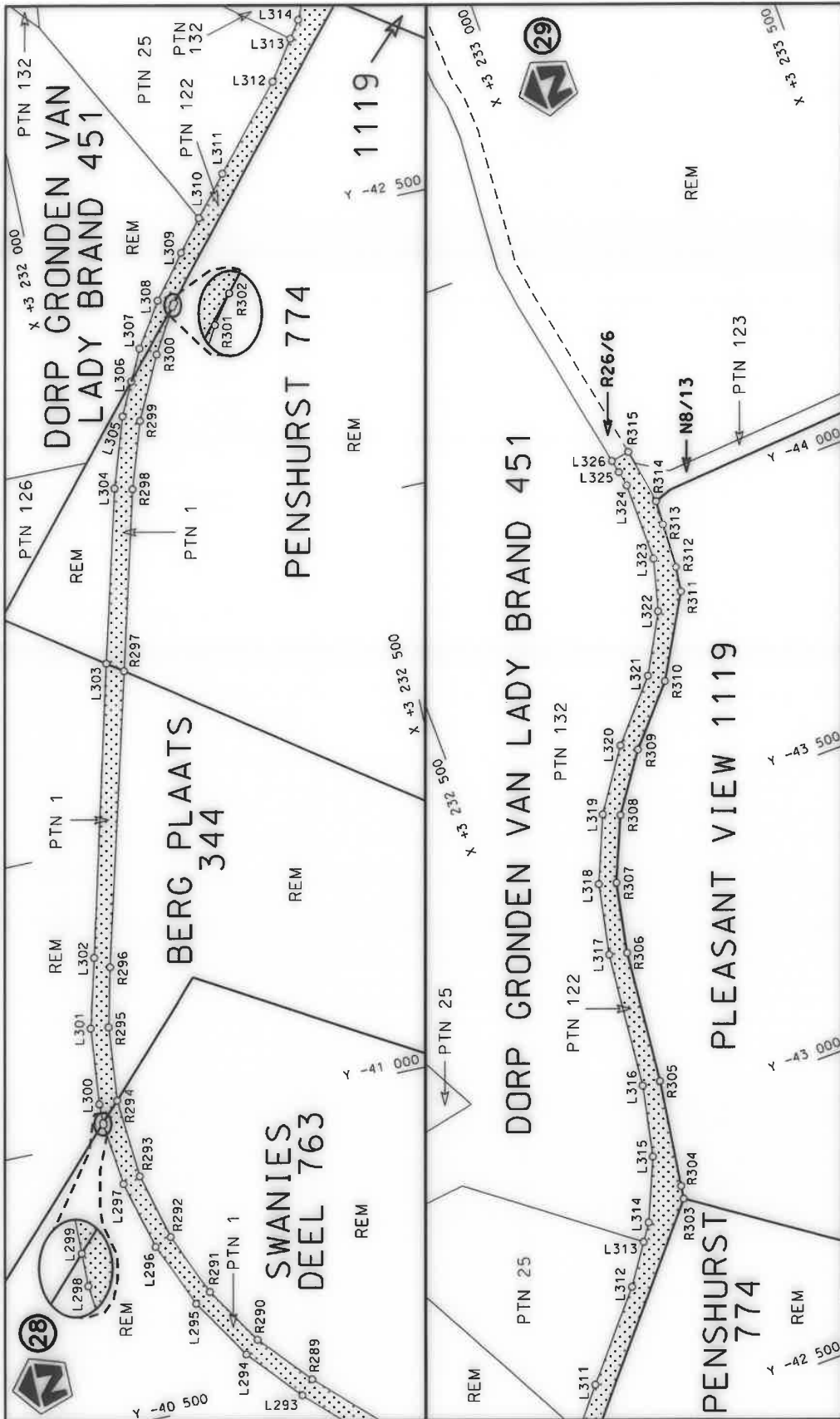
Vel Sheet 13 of 23	Plan P1142/19
steldie padreserwe voor van 'n gedeelte represents the road reserve of a portion van Nasionale Roete N8 of National Route Section	
Die figuur getoon The figure shown	Die Suid Afrikaanse Nasionale Padagentskap MSB Bpk The South African National Roads Agency SOC Ltd



<p>Die Suid Afrikaanse Nasionale Padagentskap MSB Bpk The South African National Roads Agency SOC Ltd</p>	<p>Die figuur getoon The figure shown</p>	<p>steeldie podreserwe voor van 'n gedeelte represents the road reserve of a portion van Nasionale Roete N8 of National Route Section</p>	<p>Vel van Sheet 14 of 23 Plan P1142/19</p>
		<p>12</p>	



<p>Die Suid Afrikaanse Nasionale Padagentskap MSB Bpk The South African National Roads Agency SOC Ltd</p>	<p>Die figuur getoon The figure shown</p> 	<p>stelt die padreserwe voor van 'n gedeelte represents the road reserve of a portion van Nasionale Roete N8 of National Route</p>	<p>Vel Sheet 15 of 23</p> <p>Plan P1142/19</p>
---	---	--	--



<p>Die Suid Afrikaanse Nasionale Padagentskap MSB Bpk The South African National Roads Agency SOC Ltd</p>	<p>Die figuur getoon The figure shown</p>	<p>stielde padreserwe voor van 'n gedeelte represents the road reserve of a portion van Nasionale Roete N8 of National Route</p>	<p>Vel van Sheet 16 of 23</p>
<p>Plan P1142/19</p>		<p>12</p>	<p>Seksie Section</p>

PADRESERWE KOÖRDINATE / ROAD RESERVE CO-ORDINATES					
LINKERKANT/LEFT HAND SIDE			REGTERKANT/RIGHT HAND SIDE		
	Y	X	WG 27°	Y	X
L1	16 348.51	3 234 836.88		R1	16 368.60 3 234 992.05
L2	16 325.24	3 234 862.36		R2	16 342.49 3 234 976.84
L3	16 328.87	3 234 902.90		R3	16 294.57 3 234 970.92
L4	16 323.31	3 234 917.84		R4	16 137.80 3 234 979.90
L5	16 314.22	3 234 929.68		R5	16 018.12 3 234 945.71
L6	16 215.92	3 234 935.19		R6	15 946.34 3 234 924.33
L7	16 119.65	3 234 924.65		R7	15 095.18 3 234 675.90
L8	16 007.04	3 234 909.45		R8	15 011.43 3 234 651.46
L9	14 685.84	3 234 523.73		R9	14 726.94 3 234 568.43
L10	14 694.46	3 234 509.60		R10	14 669.44 3 234 550.58
L11	14 041.79	3 234 318.76		R11	14 651.27 3 234 580.32
L12	14 003.58	3 234 306.94		R12	14 036.99 3 234 400.70
L13	13 964.49	3 234 298.46		R13	13 998.85 3 234 388.64
L14	13 925.33	3 234 290.30		R14	13 959.86 3 234 379.70
L15	13 885.62	3 234 285.48		R15	13 920.94 3 234 370.50
L16	13 845.92	3 234 280.58		R16	13 881.25 3 234 365.52
L17	13 805.96	3 234 278.97		R17	13 841.58 3 234 360.37
L18	13 765.99	3 234 277.36		R18	13 801.62 3 234 358.74
L19	13 726.00	3 234 278.31		R19	13 761.64 3 234 357.42
L20	13 686.17	3 234 281.98		R20	13 721.69 3 234 359.52
L21	13 646.33	3 234 285.59		R21	13 681.76 3 234 361.82
L22	13 606.92	3 234 292.42		R22	13 642.10 3 234 367.00
L23	13 567.70	3 234 300.29		R23	13 602.86 3 234 374.76
L24	13 528.53	3 234 308.42		R24	13 563.69 3 234 382.87
L25	13 142.11	3 234 388.54		R25	12 421.48 3 234 619.67
L26	13 133.48	3 234 373.52		R26	11 268.40 3 234 858.77
L27	13 135.43	3 234 342.34		R27	10 978.74 3 234 919.19
L28	13 100.74	3 234 341.43		R28	10 939.66 3 234 927.73
L29	13 092.87	3 234 381.94		R29	10 900.56 3 234 936.17
L30	13 089.47	3 234 399.46		R30	10 822.48 3 234 953.57
L31	12 459.08	3 234 530.17		R31	10 783.50 3 234 962.54
L32	11 250.16	3 234 780.85		R32	9 381.40 3 235 290.74
L33	11 135.47	3 234 804.61		R33	9 342.45 3 235 299.87
L34	10 982.76	3 234 836.63		R34	9 303.52 3 235 309.03
L35	10 943.64	3 234 845.01		R35	9 264.57 3 235 318.16
L36	10 904.56	3 234 853.50		R36	9 225.72 3 235 327.67
L37	10 865.47	3 234 861.99		R37	9 186.82 3 235 336.98
L38	10 826.45	3 234 870.79		R38	9 148.01 3 235 346.68
L39	10 787.43	3 234 879.59		R39	9 109.25 3 235 356.56
L40	10 748.43	3 234 888.50		R40	9 070.56 3 235 366.71
L41	9 346.35	3 235 216.78		R41	9 031.92 3 235 377.05
L42	9 307.40	3 235 225.91		R42	8 993.30 3 235 387.48
L43	9 268.46	3 235 235.04		R43	8 954.73 3 235 398.09
L44	9 229.54	3 235 244.25		R44	8 916.16 3 235 408.67
L45	9 190.68	3 235 253.74		R45	8 877.74 3 235 419.81
L46	9 151.85	3 235 263.37		R46	8 839.27 3 235 430.75
L47	9 113.03	3 235 273.00		R47	8 800.86 3 235 441.91
L48	9 062.80	3 235 285.93		R48	8 762.42 3 235 453.00
L49	9 035.57	3 235 292.98		R49	8 301.37 3 235 586.54
L50	8 997.23	3 235 303.36		R50	8 262.95 3 235 597.66
L51	8 958.62	3 235 313.80		R51	8 224.52 3 235 608.75

Vel 17 Van 23
Sheet of

P1142/19

PADRESERWE KOÖRDINATE / ROAD RESERVE CO-ORDINATES						
LINKERKANT/LEFT HAND SIDE				REGTERKANT/RIGHT HAND SIDE		
	Y	X	WG 27°		Y	X
L52	8 881.56	3 235 335.32		R52	8 186.25	3 235 620.39
L53	8 843.12	3 235 346.40		R53	8 148.34	3 235 633.15
L54	8 804.69	3 235 357.48		R54	8 110.88	3 235 647.18
L55	8 727.85	3 235 379.73		R55	8 075.52	3 235 665.88
L56	8 266.79	3 235 513.22		R56	8 040.84	3 235 685.90
L57	8 228.36	3 235 524.32		R57	8 008.02	3 235 699.30
L58	8 189.95	3 235 535.50		R58	8 003.85	3 235 701.01
L59	8 151.77	3 235 547.44		R59	7 966.82	3 235 716.13
L60	8 113.96	3 235 560.49		R60	7 931.11	3 235 734.16
L61	8 076.55	3 235 574.64		R61	7 896.89	3 235 754.87
L62	8 039.57	3 235 589.89		R62	7 863.34	3 235 776.64
L63	8 015.85	3 235 600.50		R63	7 830.48	3 235 799.45
L64	8 003.06	3 235 606.22		R64	7 635.20	3 235 938.97
L65	7 967.04	3 235 623.62		R65	7 602.51	3 235 962.02
L66	7 931.55	3 235 642.06		R66	7 569.04	3 235 983.93
L67	7 896.61	3 235 661.54		R67	7 534.76	3 236 004.55
L68	7 862.26	3 235 682.04		R68	7 499.73	3 236 023.85
L69	7 828.53	3 235 703.55		R69	7 463.98	3 236 041.79
L70	7 795.45	3 235 726.03		R70	7 427.57	3 236 058.36
L71	7 600.14	3 235 865.50		R71	7 390.56	3 236 073.54
L72	7 567.57	3 235 888.73		R72	7 353.00	3 236 087.29
L73	7 534.36	3 235 911.03		R73	7 314.94	3 236 099.59
L74	7 500.26	3 235 931.93		R74	7 276.44	3 236 110.44
L75	7 465.33	3 235 951.42		R75	7 237.58	3 236 119.93
L76	7 429.62	3 235 969.44		R76	6 692.71	3 236 249.22
L77	7 393.20	3 235 985.98		R77	6 654.15	3 236 259.85
L78	7 356.12	3 236 001.00		R78	6 615.80	3 236 271.23
L79	7 318.46	3 236 014.48		R79	6 577.44	3 236 282.55
L80	7 280.28	3 236 026.39		R80	6 538.01	3 236 289.29
L81	7 241.63	3 236 036.71		R81	6 498.59	3 236 296.07
L82	6 580.01	3 236 193.72		R82	6 482.38	3 236 299.39
L83	6 541.09	3 236 202.96		R83	6 459.40	3 236 304.09
L84	6 502.17	3 236 212.19		R84	6 420.25	3 236 312.27
L85	6 463.44	3 236 222.18		R85	6 380.50	3 236 316.82
L86	6 454.39	3 236 223.85		R86	6 340.81	3 236 321.78
L87	6 424.10	3 236 229.46		R87	6 300.87	3 236 323.90
L88	6 384.77	3 236 236.72		R88	6 260.87	3 236 323.59
L89	6 344.92	3 236 240.24		R89	6 220.87	3 236 323.39
L90	6 305.09	3 236 243.86		R90	6 181.07	3 236 319.44
L91	6 265.10	3 236 244.78		R91	6 141.22	3 236 315.95
L92	6 225.17	3 236 242.32		R92	6 101.85	3 236 308.86
L93	6 185.21	3 236 240.53		R93	6 062.45	3 236 301.97
L94	6 145.62	3 236 234.84		R94	6 023.80	3 236 291.66
L95	6 106.00	3 236 229.38		R95	5 985.23	3 236 281.07
L96	6 067.17	3 236 219.75		R96	5 947.58	3 236 267.57
L97	6 028.21	3 236 210.71		R97	5 909.88	3 236 254.20
L98	5 990.38	3 236 197.70		R98	5 873.48	3 236 237.60
L99	5 952.41	3 236 185.11		R99	5 141.14	3 235 915.62
L100	5 915.90	3 236 168.78		R100	5 104.16	3 235 900.38
L101	5 183.53	3 235 846.86		R101	5 068.74	3 235 881.79
L102	5 146.50	3 235 831.74		R102	5 033.08	3 235 863.66

Vel Sheet	18	Van of	23	P1142/19
--------------	----	-----------	----	----------

PADRESERWE KOÖRDINATE / ROAD RESERVE CO-ORDINATES						
LINKERKANT/LEFT HAND SIDE				REGTERKANT/RIGHT HAND SIDE		
	Y	X	WG 27°		Y	X
L103	5 110.89	3 235 813.52		R103	4 999.27	3 235 842.29
L104	5 075.18	3 235 795.48		R104	4 965.32	3 235 821.13
L105	5 041.33	3 235 774.18		R105	4 932.75	3 235 797.92
L106	5 007.39	3 235 753.01		R106	4 901.94	3 235 772.41
L107	4 975.02	3 235 729.52		R107	4 871.46	3 235 746.51
L108	4 944.30	3 235 703.89		R108	4 841.54	3 235 719.96
L109	4 913.73	3 235 678.09		R109	4 814.12	3 235 690.84
L110	4 885.53	3 235 649.73		R110	4 787.28	3 235 661.17
L111	4 857.46	3 235 621.23		R111	4 761.17	3 235 630.87
L112	4 831.84	3 235 590.51		R112	4 660.65	3 235 514.27
L113	4 779.65	3 235 529.88		R113	4 642.63	3 235 493.34
L114	4 772.46	3 235 521.53		R114	4 328.57	3 235 128.51
L115	4 661.39	3 235 392.51		R115	4 317.45	3 235 115.60
L116	4 356.67	3 235 038.53		R116	4 291.35	3 235 085.28
L117	4 356.68	3 235 033.04		R117	4 186.97	3 234 964.02
L118	4 356.57	3 235 033.00		R118	4 112.03	3 234 876.97
L119	4 349.44	3 235 030.14		R119	3 926.01	3 234 660.87
L120	4 223.15	3 234 883.43		R120	3 900.01	3 234 630.48
L121	3 996.76	3 234 620.44		R121	3 871.27	3 234 602.65
L122	3 971.16	3 234 589.70		R122	3 842.54	3 234 574.82
L123	3 943.19	3 234 561.11		R123	3 811.35	3 234 549.78
L124	3 915.29	3 234 532.45		R124	3 780.18	3 234 524.70
L125	3 884.86	3 234 506.48		R125	3 747.31	3 234 501.91
L126	3 854.50	3 234 480.44		R126	3 712.86	3 234 481.59
L127	3 821.83	3 234 457.36		R127	3 678.50	3 234 461.11
L128	3 789.45	3 234 433.88		R128	3 642.28	3 234 444.14
L129	3 755.01	3 234 413.53		R129	3 606.13	3 234 427.02
L130	3 720.75	3 234 392.89		R130	3 568.50	3 234 413.45
L131	3 684.79	3 234 375.38		R131	3 532.04	3 234 400.04
L132	3 648.78	3 234 357.96		R132	3 453.50	3 234 379.63
L133	3 611.42	3 234 343.67		R133	3 414.10	3 234 372.72
L134	3 573.91	3 234 329.76		R134	3 374.91	3 234 364.74
L135	3 535.49	3 234 318.64		R135	2 703.95	3 234 228.68
L136	3 497.05	3 234 307.57		R136	2 453.53	3 234 177.90
L137	3 457.79	3 234 299.91		R137	136.14	3 233 707.93
L138	3 418.59	3 234 291.97		R138	-1 642.95	3 233 347.14
L139	2 682.12	3 234 142.62		R139	-1 682.19	3 233 339.37
L140	2 440.73	3 234 093.66		R140	-1 721.43	3 233 331.63
L141	111.04	3 233 621.21		R141	-1 760.71	3 233 324.08
L142	- 782.12	3 233 440.08		R142	-1 800.02	3 233 316.66
L143	-1 638.47	3 233 266.41		R143	-1 839.35	3 233 309.37
L144	-1 677.71	3 233 258.64		R144	-2 311.80	3 233 224.56
L145	-1 716.95	3 233 250.90		R145	-2 310.13	3 233 205.61
L146	-1 756.23	3 233 243.35		R146	-2 439.27	3 233 182.48
L147	-1 795.54	3 233 235.93		R147	-2 476.72	3 233 192.62
L148	-1 834.87	3 233 228.64		R148	-2 476.46	3 233 221.53
L149	-1 874.22	3 233 221.48		R149	-2 509.22	3 233 215.94
L150	-2 267.94	3 233 150.89		R150	-2 531.93	3 233 181.12
L151	-2 297.04	3 233 146.99		R151	-2 567.70	3 233 159.48
L152	-2 453.90	3 233 118.90		R152	-4 317.32	3 232 846.11
L153	-2 489.67	3 233 097.26		R153	-4 858.17	3 232 749.24

Vel 19 Van
Sheet of 23

P1142/19

PADRESERWE KOÖRDINATE / ROAD RESERVE CO-ORDINATES						
LINKERKANT/LEFT HAND SIDE				REGTERKANT/RIGHT HAND SIDE		
	Y	X	WG 27°	Y	X	
L154	-2 513.03	3 233	062.60	R154	-6 966.85	3 232 428.50
L155	-2 545.43	3 233	056.92	R155	-7 097.98	3 232 408.64
L156	-2 553.88	3 233	085.76	R156	-7 156.79	3 232 414.87
L157	-2 582.33	3 233	095.90	R157	-7 197.72	3 232 474.64
L158	-4 284.88	3 232	790.96	R158	-7 218.35	3 232 460.51
L159	-4 848.36	3 232	690.04	R159	-7 184.23	3 232 410.69
L160	-6 978.66	3 232	365.84	R160	-7 224.44	3 232 389.32
L161	-7 060.34	3 232	353.67	R161	-7 549.33	3 232 339.90
L162	-7 100.33	3 232	332.42	R162	-7 651.56	3 232 328.74
L163	-7 082.32	3 232	306.12	R163	-8 382.70	3 232 279.96
L164	-7 102.95	3 232	292.00	R164	-8 446.29	3 232 268.71
L165	-7 127.77	3 232	328.24	R165	-9 569.60	3 232 053.53
L166	-7 186.52	3 232	334.40	R166	-9 952.96	3 231 980.10
L167	-7 540.30	3 232	280.59	R167	-10 039.69	3 231 960.07
L168	-7 647.57	3 232	268.87	R168	-10 124.67	3 231 933.56
L169	-8 374.16	3 232	220.39	R169	-11 534.25	3 231 434.67
L170	-9 563.67	3 231	993.58	R170	-13 499.61	3 230 739.06
L171	-9 941.67	3 231	921.17	R171	-13 817.00	3 230 626.73
L172	-10 104.65	3 231	876.99	R172	-13 896.08	3 230 594.58
L173	-11 524.62	3 231	374.42	R173	-13 987.97	3 230 545.81
L174	-13 500.32	3 230	675.19	R174	-14 066.40	3 230 492.75
L175	-13 659.64	3 230	618.69	R175	-14 527.33	3 230 145.41
L176	-13 723.95	3 230	595.93	R176	-14 575.48	3 230 127.90
L177	-13 796.98	3 230	570.17	R177	-14 611.14	3 230 158.29
L178	-13 848.06	3 230	550.26	R178	-14 623.59	3 230 135.82
L179	-13 878.83	3 230	536.42	R179	-14 595.84	3 230 112.57
L180	-13 956.92	3 230	494.47	R180	-14 620.93	3 230 074.88
L181	-14 030.29	3 230	444.83	R181	-15 237.00	3 229 610.63
L182	-14 146.87	3 230	356.98	R182	-15 247.08	3 229 603.03
L183	-14 317.67	3 230	228.27	R183	-15 445.13	3 229 453.79
L184	-14 495.27	3 230	094.44	R184	-15 517.49	3 229 404.76
L185	-14 524.70	3 230	053.46	R185	-15 594.41	3 229 363.24
L186	-14 503.50	3 230	011.34	R186	-15 675.10	3 229 329.65
L187	-14 522.03	3 229	999.45	R187	-15 758.76	3 229 304.32
L188	-14 544.03	3 230	038.95	R188	-15 844.54	3 229 287.51
L189	-14 587.45	3 230	024.98	R189	-17 681.61	3 229 022.60
L190	-15 209.83	3 229	555.98	R190	-18 742.15	3 228 869.66
L191	-15 409.02	3 229	405.88	R191	-18 825.85	3 228 861.95
L192	-15 486.37	3 229	353.46	R192	-18 909.90	3 228 862.84
L193	-15 568.59	3 229	309.08	R193	-18 993.42	3 228 872.33
L194	-15 654.85	3 229	273.17	R194	-19 736.60	3 228 995.64
L195	-15 744.28	3 229	246.09	R195	-20 877.20	3 229 184.91
L196	-15 835.97	3 229	228.13	R196	-21 011.11	3 229 223.55
L197	-17 672.12	3 228	963.33	R197	-21 267.35	3 229 297.50
L198	-18 733.59	3 228	810.28	R198	-21 744.58	3 229 429.83
L199	-18 823.41	3 228	802.00	R199	-21 808.30	3 229 445.59
L200	-18 913.61	3 228	802.95	R200	-22 015.72	3 229 559.30
L201	-19 003.24	3 228	813.14	R201	-22 097.49	3 229 604.13
L202	-19 684.03	3 228	926.10	R202	-23 763.68	3 230 132.11
L203	-20 895.44	3 229	127.12	R203	-24 579.02	3 230 381.52
L204	-20 990.56	3 229	154.01	R204	-24 951.18	3 230 495.47

Vel Sheet 20 Van of 23

P1142/19

PADRESERWE KOÖRDINATE / ROAD RESERVE CO-ORDINATES					
LINKERKANT/LEFT HAND SIDE			REGTERKANT/RIGHT HAND SIDE		
	Y	X	WG 27°	Y	X
L205	-21 686.21	3 229 350.77		R205	-26 692.28 3 231 028.30
L206	-21 839.77	3 229 394.42		R206	-27 715.70 3 231 341.44
L207	-21 967.84	3 229 463.79		R207	-27 774.13 3 231 369.78
L208	-22 121.21	3 229 548.71		R208	-27 776.57 3 231 380.98
L209	-23 723.52	3 230 057.03		R209	-27 735.26 3 231 431.09
L210	-23 977.04	3 230 134.65		R210	-27 764.53 3 231 440.69
L211	-24 607.12	3 230 327.37		R211	-27 827.32 3 231 396.37
L212	-24 980.38	3 230 441.67		R212	-27 846.91 3 231 392.05
L213	-26 692.73	3 230 965.69		R213	-27 922.60 3 231 404.76
L214	-27 783.56	3 231 299.46		R214	-28 418.85 3 231 556.63
L215	-27 830.63	3 231 298.18		R215	-28 501.88 3 231 586.72
L216	-27 856.96	3 231 259.17		R216	-28 581.42 3 231 625.07
L217	-27 886.60	3 231 268.25		R217	-28 656.66 3 231 671.29
L218	-27 888.91	3 231 316.01		R218	-28 700.34 3 231 703.33
L219	-27 897.73	3 231 322.26		R219	-28 726.80 3 231 724.95
L220	-27 927.90	3 231 343.63		R220	-30 290.50 3 233 050.42
L221	-28 436.41	3 231 499.25		R221	-30 796.43 3 233 479.14
L222	-28 525.16	3 231 531.42		R222	-31 015.61 3 233 661.70
L223	-28 610.19	3 231 572.42		R223	-31 711.60 3 234 243.07
L224	-28 690.62	3 231 621.83		R224	-31 978.60 3 234 465.83
L225	-28 743.80	3 231 661.19		R225	-32 030.83 3 234 506.86
L226	-28 765.60	3 231 679.18		R226	-32 085.39 3 234 544.76
L227	-30 342.00	3 233 015.42		R227	-32 615.56 3 234 890.39
L228	-30 566.09	3 233 205.40		R228	-32 697.00 3 234 937.79
L229	-30 787.73	3 233 393.11		R229	-32 752.35 3 234 965.23
L230	-31 094.30	3 233 649.66		R230	-32 872.13 3 235 006.72
L231	-32 017.04	3 234 419.76		R231	-33 567.35 3 235 201.86
L232	-32 066.50	3 234 458.61		R232	-33 605.93 3 235 226.09
L233	-32 118.15	3 234 494.50		R233	-33 602.88 3 235 271.55
L234	-32 161.44	3 234 522.71		R234	-33 578.83 3 235 331.39
L235	-32 648.33	3 234 840.13		R235	-33 615.54 3 235 345.80
L236	-32 724.51	3 234 884.47		R236	-33 642.17 3 235 277.54
L237	-32 788.32	3 234 914.19		R237	-33 673.57 3 235 235.69
L238	-32 888.35	3 234 948.96		R238	-33 726.57 3 235 223.15
L239	-33 575.94	3 235 141.96		R239	-33 808.31 3 235 223.89
L240	-33 649.75	3 235 157.49		R240	-34 289.07 3 235 098.05
L241	-33 724.98	3 235 163.14		R241	-34 593.29 3 235 018.42
L242	-33 800.26	3 235 158.81		R242	-34 708.61 3 234 994.13
L243	-33 874.31	3 235 144.59		R243	-34 825.74 3 234 981.07
L244	-34 288.82	3 235 036.09		R244	-34 943.58 3 234 979.37
L245	-34 578.10	3 234 960.38		R245	-35 061.04 3 234 989.05
L246	-34 699.09	3 234 934.89		R246	-35 550.08 3 235 053.27
L247	-34 821.98	3 234 921.18		R247	-35 633.61 3 235 060.42
L248	-34 923.94	3 234 918.85		R248	-35 679.09 3 235 076.15
L249	-34 936.97	3 234 919.14		R249	-35 681.46 3 235 158.13
L250	-35 068.85	3 234 929.56		R250	-35 706.44 3 235 157.41
L251	-35 331.84	3 234 964.09		R251	-35 704.08 3 235 075.61
L252	-35 557.89	3 234 993.78		R252	-35 748.59 3 235 057.95
L253	-35 645.29	3 235 000.80		R253	-35 830.38 3 235 047.45
L254	-35 732.95	3 234 998.98		R254	-35 921.65 3 235 026.81
L255	-35 819.83	3 234 988.38		R255	-36 010.53 3 234 997.05

Vel Sheet 21 Van of 23

P1142/19

PADRESERWE KOÖRDINATE / ROAD RESERVE CO-ORDINATES					
LINKERKANT/LEFT HAND SIDE			REGTERKANT/RIGHT HAND SIDE		
	Y	X	WG 27°	Y	X
L256	-35 905.49	3 234 969.03		R256	-36 087.37 3 234 944.25
L257	-35 988.63	3 234 941.19		R257	-36 194.73 3 234 882.73
L258	-36 073.42	3 234 915.88		R258	-36 315.57 3 234 783.44
L259	-36 175.78	3 234 857.65		R259	-36 451.53 3 234 615.90
L260	-36 294.32	3 234 760.68		R260	-36 507.08 3 234 503.83
L261	-36 354.02	3 234 695.95		R261	-36 537.29 3 234 454.01
L262	-36 424.83	3 234 599.44		R262	-36 554.32 3 234 394.91
L263	-36 478.06	3 234 492.24		R263	-36 607.62 3 234 229.36
L264	-36 519.81	3 234 382.95		R264	-36 659.29 3 234 101.03
L265	-36 562.93	3 234 249.02		R265	-36 771.44 3 233 946.64
L266	-36 573.57	3 234 216.15		R266	-36 811.44 3 233 877.12
L267	-36 608.93	3 234 130.70		R267	-36 838.49 3 233 828.94
L268	-36 655.32	3 234 046.81		R268	-36 876.79 3 233 710.29
L269	-36 745.35	3 233 928.88		R269	-36 911.18 3 233 564.48
L270	-36 809.16	3 233 816.91		R270	-36 976.67 3 233 432.16
L271	-36 845.77	3 233 704.44		R271	-37 073.08 3 233 320.37
L272	-36 881.90	3 233 554.96		R272	-37 132.15 3 233 274.08
L273	-36 950.44	3 233 414.35		R273	-37 215.16 3 233 225.24
L274	-37 050.52	3 233 298.33		R274	-37 223.14 3 233 222.17
L275	-37 113.97	3 233 248.04		R275	-37 304.54 3 233 190.90
L276	-37 203.02	3 233 196.16		R276	-38 199.87 3 232 928.95
L277	-37 228.89	3 233 185.86		R277	-38 296.51 3 232 904.14
L278	-37 293.87	3 233 161.48		R278	-38 411.54 3 232 879.24
L279	-38 119.42	3 232 919.31		R279	-38 803.19 3 232 800.37
L280	-38 189.12	3 232 899.26		R280	-39 161.06 3 232 728.31
L281	-38 290.58	3 232 873.26		R281	-39 573.80 3 232 649.30
L282	-38 405.08	3 232 848.31		R282	-39 887.18 3 232 578.86
L283	-38 817.79	3 232 765.27		R283	-39 936.49 3 232 564.97
L284	-39 151.81	3 232 698.06		R284	-40 021.59 3 232 526.64
L285	-39 568.81	3 232 610.52		R285	-40 088.55 3 232 484.54
L286	-39 861.47	3 232 548.57		R286	-40 147.62 3 232 435.63
L287	-39 922.93	3 232 535.56		R287	-40 212.20 3 232 369.28
L288	-40 006.24	3 232 496.80		R288	-40 368.15 3 232 208.12
L289	-40 069.71	3 232 457.46		R289	-40 507.77 3 232 063.53
L290	-40 124.98	3 232 412.24		R290	-40 596.67 3 231 984.34
L291	-40 190.46	3 232 345.77		R291	-40 697.19 3 231 920.23
L292	-40 354.46	3 232 174.12		R292	-40 806.50 3 231 873.03
L293	-40 484.12	3 232 040.22		R293	-40 922.11 3 231 843.76
L294	-40 575.84	3 231 959.61		R294	-41 060.14 3 231 833.91
L295	-40 682.30	3 231 892.43		R295	-41 188.79 3 231 847.32
L296	-40 795.32	3 231 843.71		R296	-41 291.07 3 231 872.26
L297	-40 915.06	3 231 813.12		R297	-41 792.15 3 232 007.12
L298	-41 023.49	3 231 801.68		R298	-42 100.00 3 232 089.53
L299	-41 027.15	3 231 801.75		R299	-42 213.74 3 232 127.81
L300	-41 060.52	3 231 802.41		R300	-42 320.88 3 232 180.64
L301	-41 193.56	3 231 816.27		R301	-42 395.76 3 232 224.77
L302	-41 313.10	3 231 848.64		R302	-42 401.85 3 232 229.29
L303	-41 811.64	3 231 980.01		R303	-42 854.80 3 232 621.31
L304	-42 108.11	3 232 059.21		R304	-42 877.27 3 232 625.10
L305	-42 227.94	3 232 099.73		R305	-43 062.71 3 232 654.54
L306	-42 284.28	3 232 127.54		R306	-43 293.58 3 232 679.37

Vel
Sheet

22

Van
of

23

P1142/19

PADRESERWE KOÖRDINATE / ROAD RESERVE CO-ORDINATES					
LINKERKANT/LEFT HAND SIDE			REGTERKANT/RIGHT HAND SIDE		
	Y	X	WG 27°	Y	X
L307	-42 337.58	3 232 153.85		R307	-43 415.34 3 232 704.67
L308	-42 412.52	3 232 202.56		R308	-43 523.73 3 232 752.82
L309	-42 485.11	3 232 260.40		R309	-43 620.45 3 232 821.53
L310	-42 537.42	3 232 304.62		R310	-43 716.05 3 232 907.70
L311	-42 604.36	3 232 361.32		R311	-43 853.15 3 232 988.81
L312	-42 742.14	3 232 482.20		R312	-43 896.26 3 232 995.38
L313	-42 808.68	3 232 528.84		R313	-43 974.69 3 232 999.36
L314	-42 837.66	3 232 549.18		R314	-44 016.48 3 233 002.84
L315	-42 943.25	3 232 596.44		R315	-44 114.60 3 232 987.60
L316	-43 066.08	3 232 623.19			
L317	-43 301.93	3 232 648.69			
L318	-43 424.06	3 232 674.44			
L319	-43 536.21	3 232 723.81			
L320	-43 637.95	3 232 795.37			
L321	-43 735.25	3 232 882.81			
L322	-43 834.92	3 232 939.20			
L323	-43 924.19	3 232 963.41			
L324	-44 060.80	3 232 964.47			
L325	-44 087.25	3 232 959.62			
L326	-44 109.76	3 232 955.08			

Vel Sheet	23	Van of	23	P1142/19
--------------	----	-----------	----	----------