

DEPARTMENT OF TRANSPORT

NO. 895

21 September 2021

**THE SOUTH AFRICAN NATIONAL ROADS
AGENCY SOC LIMITED**

Registration No: 1998/009584/30

DECLARATION AMENDMENT OF NATIONAL ROAD N12 SECTION 11

AMENDMENT OF DECLARATION No. 759 OF 2007.

By virtue of Section 40 (1)(b) of The South African National Roads Agency Limited and National Roads Act, 1998 (Act No. 7 of 1998), I hereby amend Declaration No. 759 of 2007 by substituting the section from the Northern Cape/North West Provincial Border up to points L38 and R42 on sheet 5 of Plan P568/06, with the subjoined sheets 1 to 6 of Plan P1048/18.

(National Road N12 Section 11: Northern Cape/North West Provincial Border – Christiana)**MINISTER OF TRANSPORT**

DEPARTEMENT VAN VERVOER

NO. 895

21 September 2021

**DIE SUID-AFRIKAANSE NASIONALE
PADAGENTSKAP MSB BEPERK**

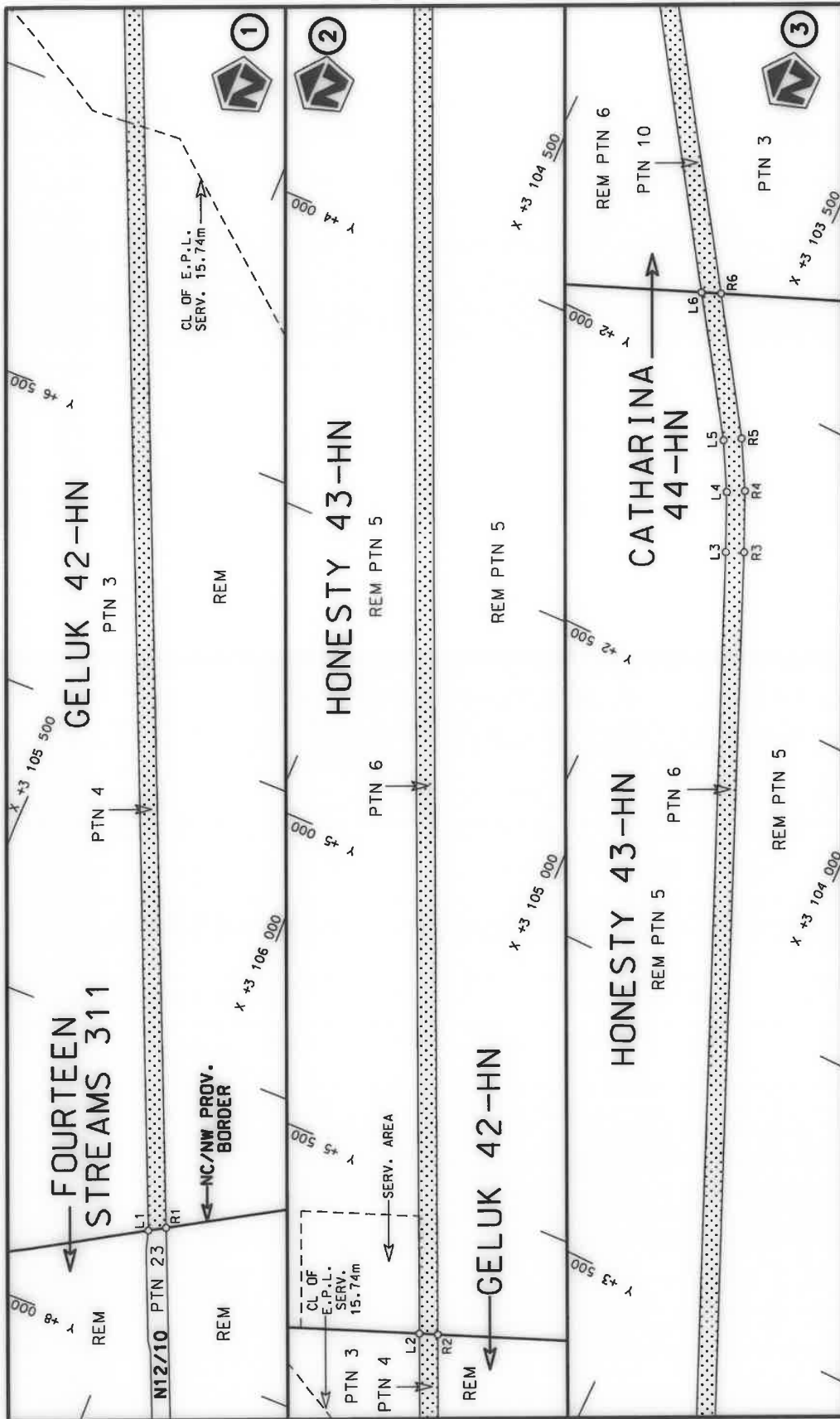
Registrasie No: 1998/009584/30

VERKLARING WYSIGING VAN NASIONALE PAD N12 SEKSIE 11

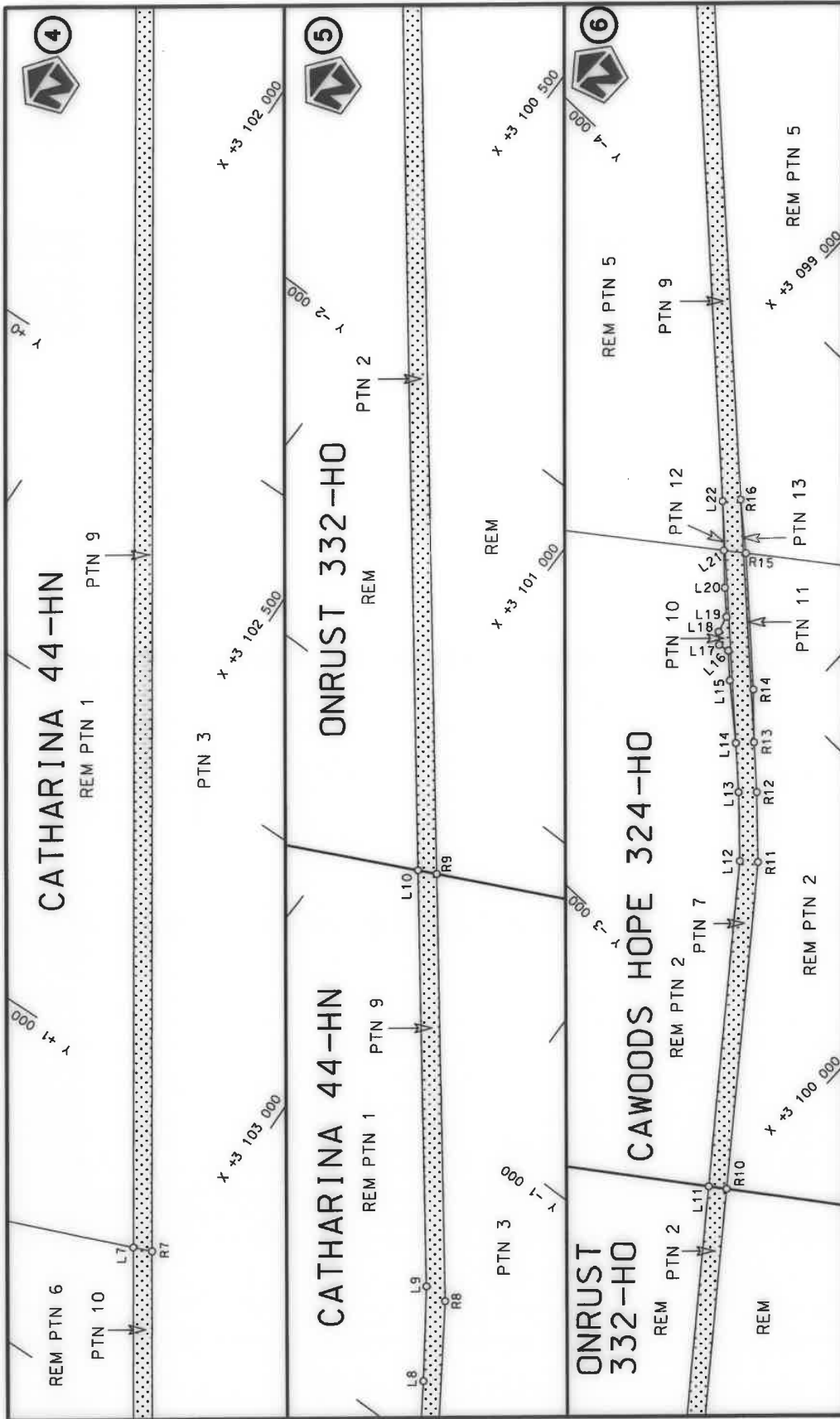
WYSIGING VAN VERKLARING No. 759 VAN 2007.

Kragtens Artikel 40(1)(b) van die Wet op die Suid-Afrikaanse Nasionale Padagentskap Beperk en op Nasionale Paaie, 1998 (Wet No. 7 van 1998), wysig ek hiermee Verklaring No. 759 van 2007, deur die gedeelte vanaf die Noord Kaap/Noord Wes Provinsiale grens tot by punte L38 en R42 op vel 5 van Plan P568/06, te vervang met bygaande velle 1 tot 6 van Plan P1048/18.

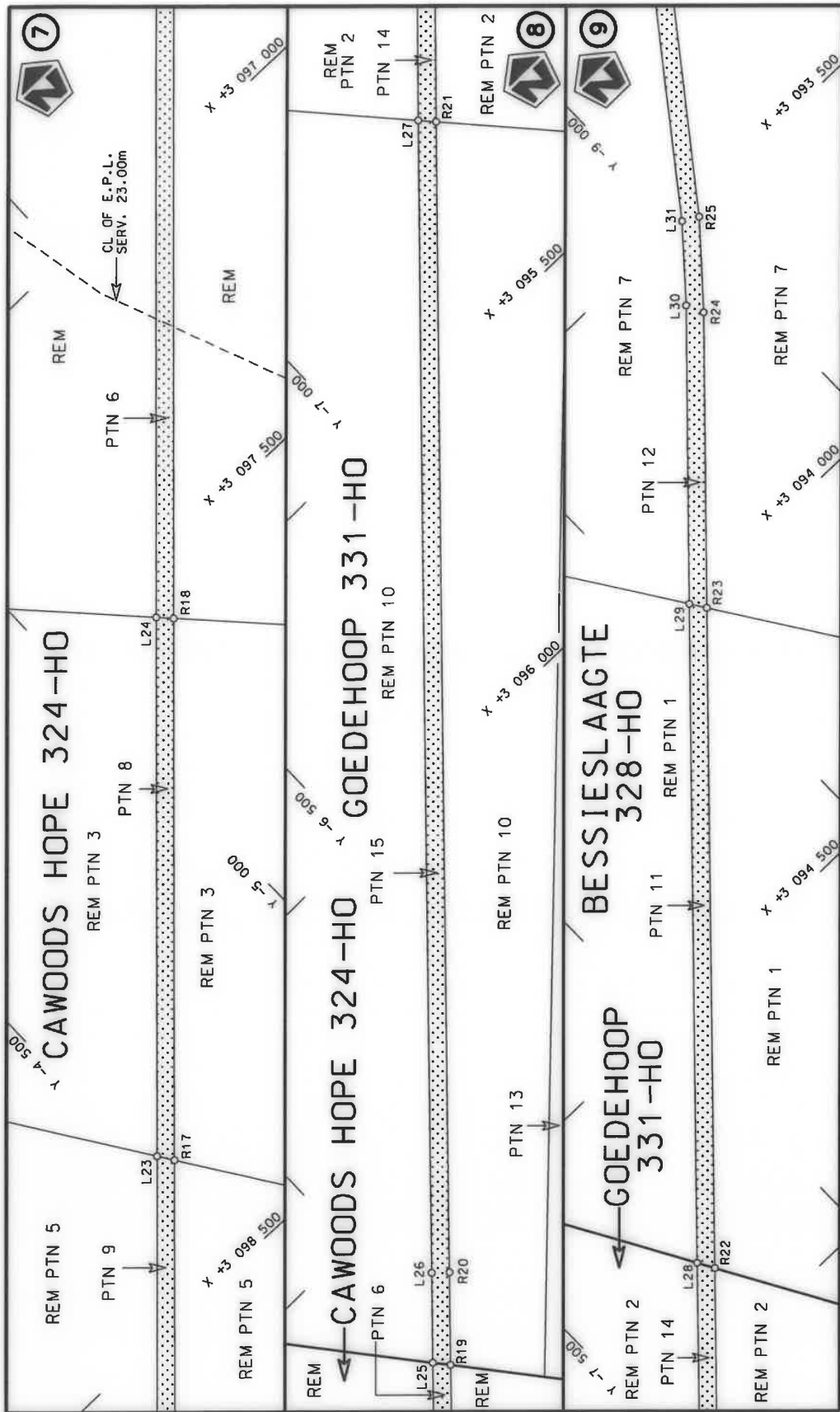
(Nasionale Pad N12 Seksie 11: Noord-Kaap/Noordwes Provinsiale Grens – Christiana)**MINISTER VAN VERVOER**



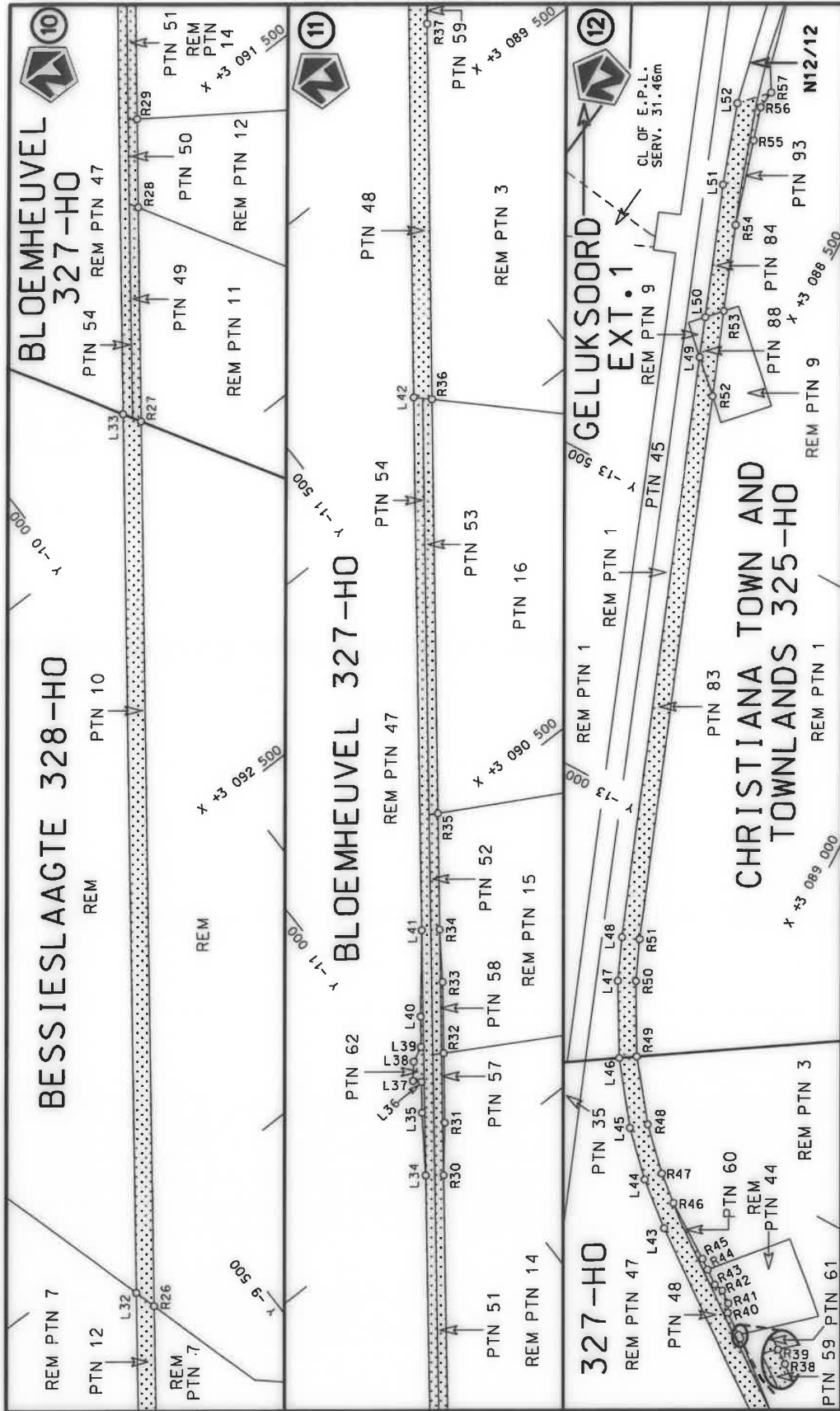
<p>Die Suid Afrikaanse Nasionale Padagentskap MSB Bpk The South African National Roads Agency SOC Ltd</p>	<p>Die figuur getoon The figure shown</p> 	<p>stelt die podreserwe voor van 'n gedeelte represents the road reserve of a portion van Nasionale Roete N12 of National Route</p>	<p>Vel Sheet 1 van of 6 Plan P1048/18</p>
		11	



<p>Die Suid Afrikaanse Nasionale Padagentskap MSB Bpk The South African National Roads Agency SOC Ltd</p>	<p>Die figuur getoon The figure shown</p> 	<p>steldie podreserwe voor van 'n gedeelte represents the road reserve of a portion van Nasionale Roete N12 of National Route</p>	<p>Vel Sheet 2 of 6 Plan P1048/18</p>
		<p>11</p>	<p>11</p>



<p>Die Suid Afrikaanse Nasionale Padagentskap MSB Bpk The South African National Roads Agency SOC Ltd</p>	<p>Die figuur getoon The figure shown</p>	<p>stelt die padreserwe voor van 'n gedeelte represents the road reserve of a portion van Nasionale Roete N12 of National Route</p>	<p>Vel Sheet 3 of 6 Plan P1048/18</p>
---	---	---	---



<p>Die Suid Afrikaanse Nasionale Padogenskap MSB Bpk The South African National Roads Agency SOC Ltd</p>	<p>Die figuur getoon The figure shown</p>	<p>stelsel padreserwe voor van 'n gedeelte represents the road reserve of a portion van Nasionale Roete N12 of National Route</p>	<p>Vel van Sheet 4 of 6</p>
		<p>Seksie N12 Section</p>	<p>Plan P1048/18</p>

PADRESERWE KOÖRDINATE / ROAD RESERVE CO-ORDINATES					
LINKERKANT/LEFT HAND SIDE			REGTERKANT/RIGHT HAND SIDE		
	Y	X	WG 25°	Y	X
L1	7 803.61	3 105 986.10		R1	7 787.63 3 106 013.12
L2	5 749.51	3 105 096.53		R2	5 738.30 3 105 126.81
L3	2 272.54	3 103 580.04		R3	2 259.27 3 103 608.96
L4	2 176.65	3 103 535.92		R4	2 161.77 3 103 563.85
L5	2 097.27	3 103 491.79		R5	2 081.11 3 103 518.81
L6	1 879.80	3 103 345.48		R6	1 867.17 3 103 376.84
L7	1 241.38	3 102 915.95		R7	1 228.99 3 102 946.71
L8	- 595.35	3 101 680.20		R8	- 730.46 3 101 626.02
L9	- 731.78	3 101 584.38		R9	-1 321.69 3 101 163.23
L10	-1 307.38	3 101 133.63		R10	-2 805.56 3 100 000.49
L11	-2 787.28	3 099 974.72		R11	-3 259.34 3 099 644.92
L12	-3 239.01	3 099 620.97		R12	-3 347.04 3 099 558.85
L13	-3 325.32	3 099 536.06		R13	-3 407.15 3 099 495.11
L14	-3 384.60	3 099 473.19		R14	-3 473.59 3 099 430.43
L15	-3 457.37	3 099 389.65		R15	-3 638.17 3 099 256.22
L16	-3 493.13	3 099 351.77		R16	-3 700.01 3 099 184.70
L17	-3 489.83	3 099 333.42		R17	-4 545.40 3 098 290.61
L18	-3 505.93	3 099 316.83		R18	-5 201.21 3 097 595.34
L19	-3 533.93	3 099 308.60		R19	-5 976.72 3 096 773.19
L20	-3 569.07	3 099 271.40		R20	-6 088.74 3 096 654.42
L21	-3 615.38	3 099 225.05		R21	-7 479.92 3 095 177.41
L22	-3 676.68	3 099 163.69		R22	-7 766.53 3 094 873.12
L23	-4 528.03	3 098 264.30		R23	-8 565.95 3 094 024.38
L24	-5 180.10	3 097 572.72		R24	-8 922.74 3 093 645.58
L25	-5 957.17	3 096 748.59		R25	-9 033.91 3 093 518.57
L26	-6 065.70	3 096 633.47		R26	-9 327.47 3 093 127.58
L27	-7 459.17	3 095 153.98		R27	-10 264.33 3 091 879.77
L28	-7 750.37	3 094 844.80		R28	-10 490.54 3 091 578.48
L29	-8 547.95	3 093 997.86		R29	-10 583.95 3 091 454.07
L30	-8 908.67	3 093 614.99		R30	-10 930.38 3 090 992.65
L31	-9 006.42	3 093 502.78		R31	-10 989.08 3 090 920.89
L32	-9 316.79	3 093 089.44		R32	-11 062.81 3 090 822.69
L33	-10 247.14	3 091 850.39		R33	-11 138.17 3 090 722.33
L34	-10 905.43	3 090 973.67		R34	-11 190.71 3 090 645.92
L35	-10 968.27	3 090 882.29		R35	-11 313.79 3 090 482.00
L36	-11 001.09	3 090 838.61		R36	-11 752.07 3 089 898.25
L37	-10 990.21	3 090 828.46		R37	-12 149.19 3 089 369.70
L38	-11 012.08	3 090 802.15		R38	-12 246.55 3 089 252.38
L39	-11 037.90	3 090 789.51		R39	-12 250.84 3 089 246.68
L40	-11 070.39	3 090 746.62		R40	-12 276.78 3 089 212.11
L41	-11 165.36	3 090 627.49		R41	-12 292.03 3 089 205.12
L42	-11 729.50	3 089 876.16		R42	-12 307.03 3 089 185.11
L43	-12 356.01	3 089 042.16		R43	-12 309.80 3 089 168.09
L44	-12 416.23	3 088 971.62		R44	-12 327.43 3 089 144.62
L45	-12 484.85	3 088 906.34		R45	-12 340.19 3 089 127.62
L46	-12 584.90	3 088 831.62		R46	-12 402.95 3 089 035.92
L47	-12 704.17	3 088 765.60		R47	-12 439.60 3 088 993.32
L48	-12 775.67	3 088 736.06		R48	-12 504.62 3 088 930.88
L49	-13 742.19	3 088 376.96		R49	-12 601.53 3 088 858.02
L50	-13 808.66	3 088 352.32		R50	-12 718.74 3 088 794.22
L51	-14 029.40	3 088 270.25		R51	-12 786.90 3 088 765.15

Vel Sheet	5	Van of	6	P1048/18
--------------	---	-----------	---	----------

PADRESERWE KOÖRDINATE / ROAD RESERVE CO-ORDINATES					
LINKERKANT/LEFT HAND SIDE			REGTERKANT/RIGHT HAND SIDE		
	Y	X	WG 25°	Y	X
L52	-14 167.29	3 088 224.87		R52	-13 692.06 3 088 428.92
				R53	-13 833.68 3 088 376.31
				R54	-13 976.83 3 088 323.14
				R55	-14 122.72 3 088 280.67
				R56	-14 180.01 3 088 264.03
				R57	-14 211.28 3 088 268.11

Vel Sheet	6	Van of	6	P1048/18
--------------	---	-----------	---	----------