

## DEPARTMENT OF TRANSPORT

NO. 894

21 September 2021

**THE SOUTH AFRICAN NATIONAL ROADS  
AGENCY SOC LIMITED**

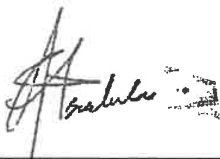
Registration No: 1998/009584/30

**DECLARATION AMENDMENT OF NATIONAL ROAD N17 SECTION 3**

AMENDMENT OF DECLARATION No.'s 1 OF 2005 AND 120 OF 2005.

By virtue of Section 40 (1)(b) of The South African National Roads Agency Limited and National Roads Act, 1998 (Act No. 7 of 1998), I hereby amend **(I)** Declaration No. 120 of 2005 in its entirety, **(II)** Declaration No. 1 of 2005 from points L87 and R92 on sheet 9 of Plan No. P546/04 up to the northern boundary of Kerk Street on sheet 24 of Plan No. P546/04, by substituting all sheets of their respective Plans with the accompanying sheets 1 to 27 of Plan No. P1040/18.

In the town of Bethal the N17 Section 3 enters the town from the north and follows the street known as Moses Kotane Street at the time of declaration, up to Kerk Street.

**(National Road N17 Section 3: Gauteng \ Mpumalanga Provincial Border – Bethal)****MINISTER OF TRANSPORT**

## DEPARTEMENT VAN VERVOER

NO. 894

21 September 2021

**DIE SUID-AFRIKAANSE NASIONALE  
PADAGENTSKAP MSB BEPERK**

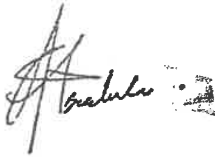
Registrasie No: 1998/009584/30

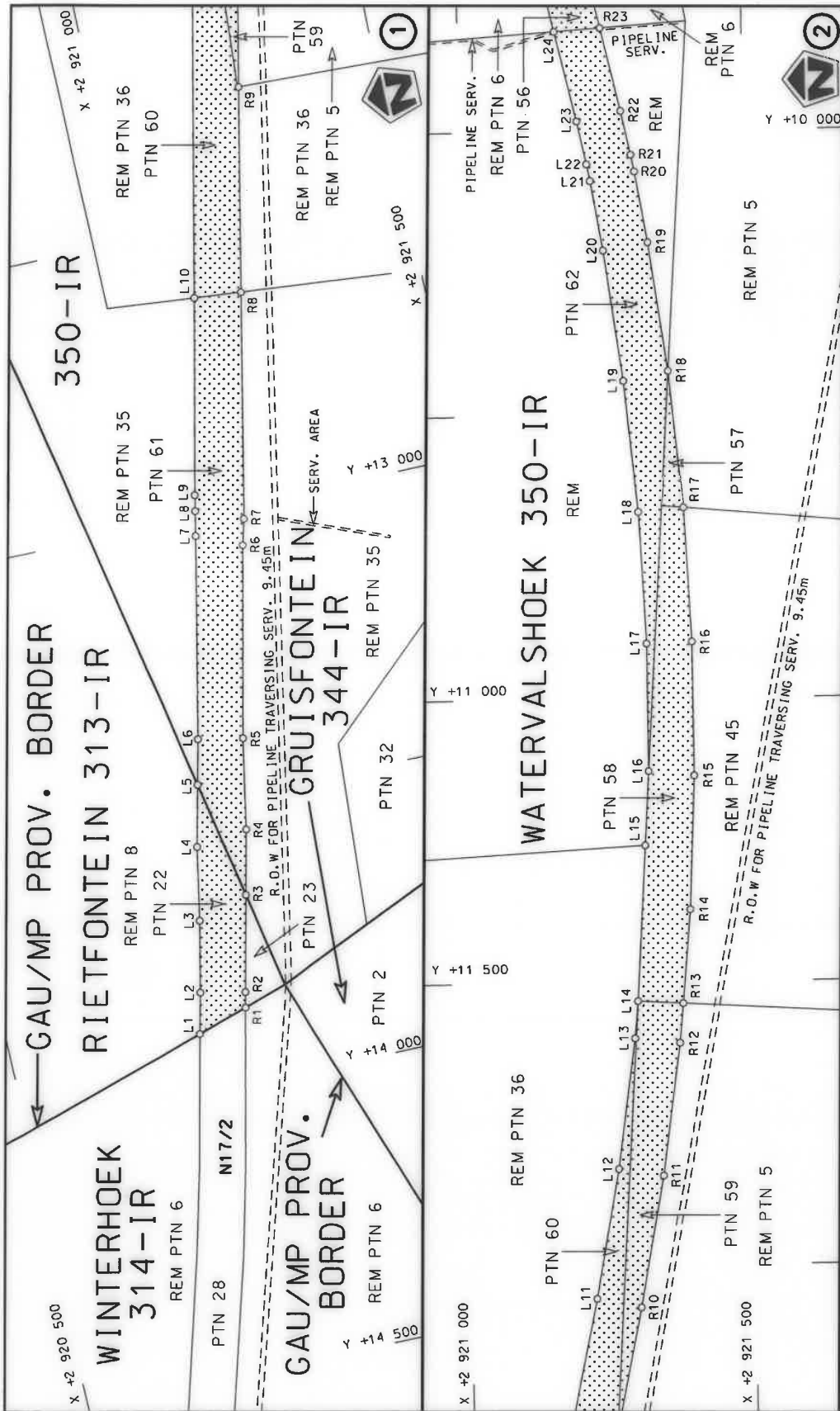
**VERKLARING WYSIGING VAN NASIONALE PAD N17 SEKSIE 3**

WYSIGING VAN VERKLARING No.'s 1 VAN 2005 EN 120 VAN 2005.

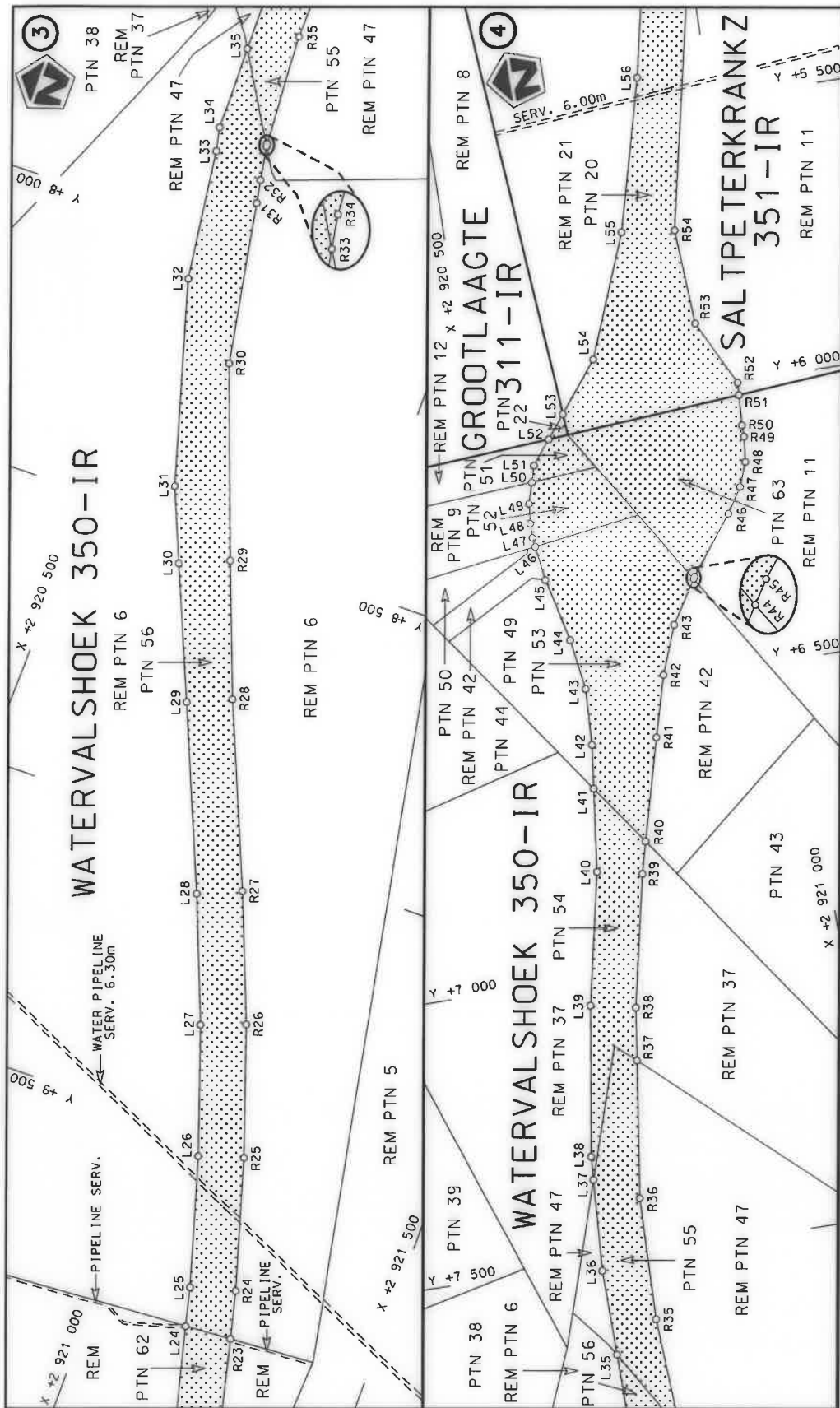
Kragtens Artikel 40(1)(b) van die Wet op die Suid-Afrikaanse Nasionale Padagentskap Beperk en op Nasionale Paaie, 1998 (Wet No. 7 van 1998), wysig ek hiermee **(I)** Verklaring No. 120 van 2005 deur dit in sy geheel, **(II)** Verklaring No. 1 van 2005 vanaf punte L87 en R92 op vel 9 van Plan No. P546/04 tot by die noordelike grens van Kerkstraat op vel 24 van Plan No. P546/04, deur alle velle van hulle respektiewelike Planne te vervang met meegaande velle 1 tot 27 van Plan No. P1040/18.

In die dorp van Bethal kom die N17 Seksie 3 die dorp binne vanuit die noorde en volg die straat bekend as Moses Kotanesraat tydens datum van verklaring, tot by Kerkstraat.

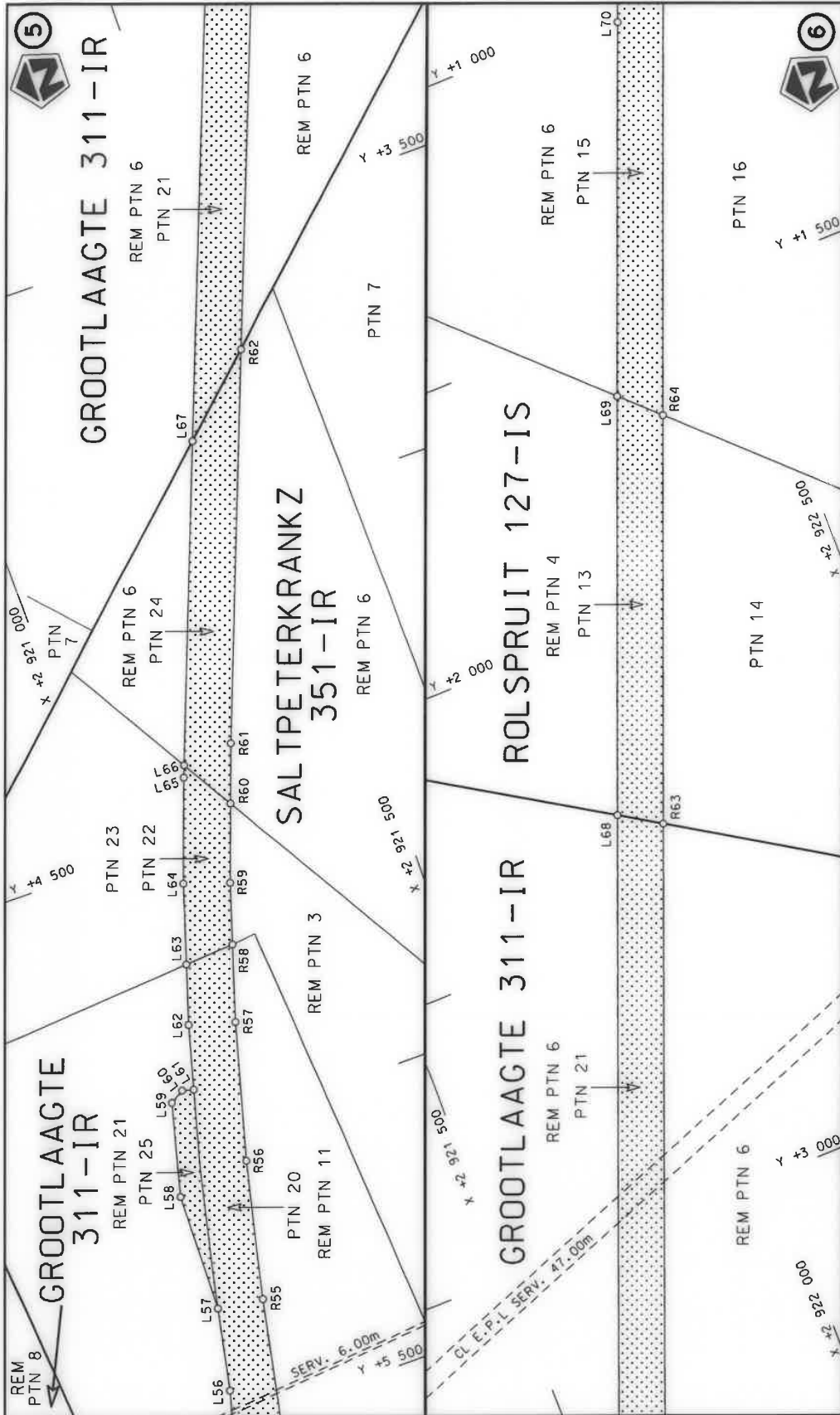
**(Nasionale Pad N17 Seksie 3: Gauteng \ Mpumalanga Provinsiale Grens – Bethal)****MINISTER VAN VERVOER**



Die Suid-Afrikaanse Nasionale Padagentskap MSB Bpk The South African National Roads Agency SOC Ltd	Die figuur getoon The figure shown		steldie padreserwe voor van 'n gedeelte represents the road reserve of a portion
			van Nasionale Roete N17 of National Route Section
		3	
	Vel Sheet 1 van 27		Plan P1040/18

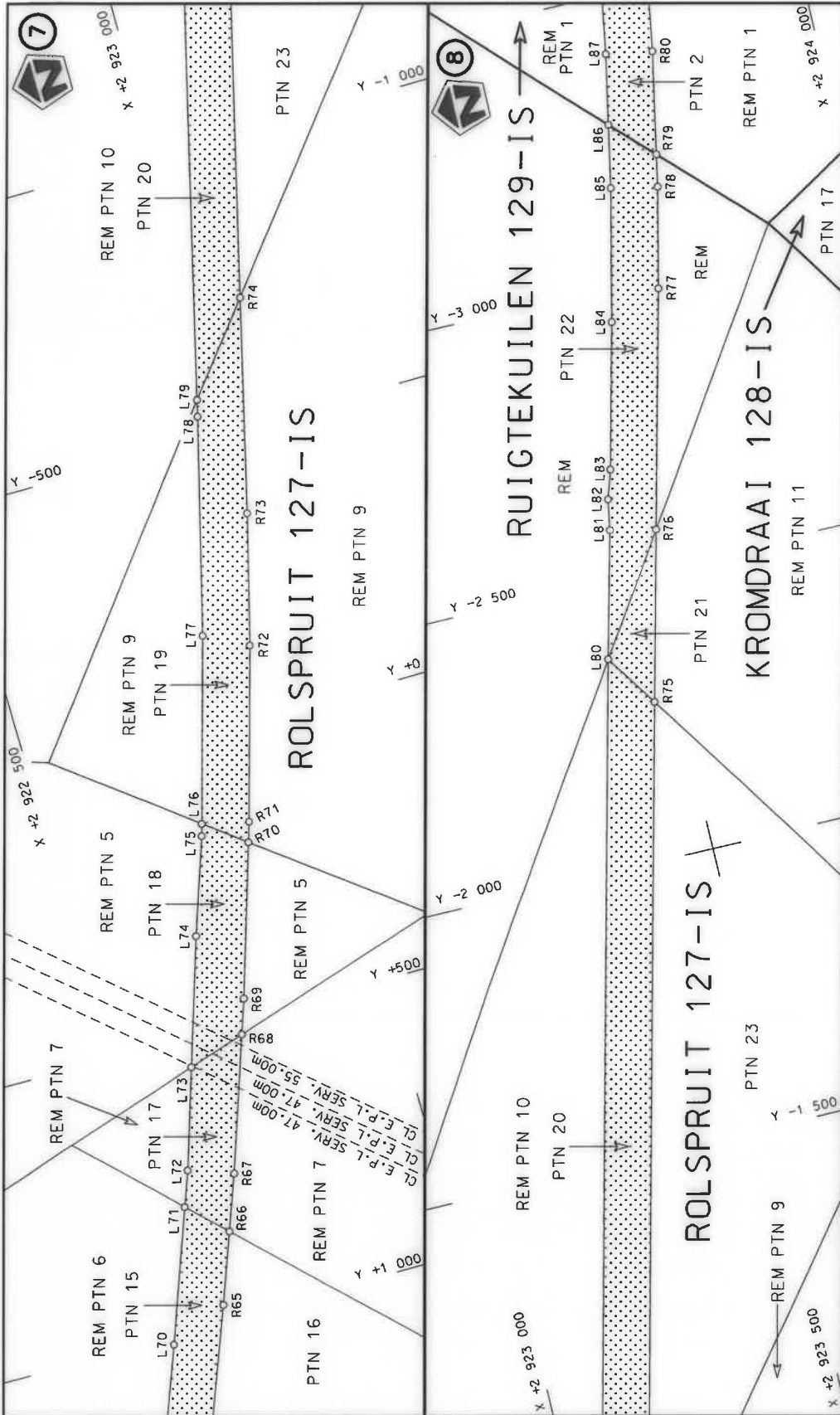


Die Suid Afrikaanse Nasionale Padagentskap MSB Bpk The South African National Roads Agency SOC Ltd	Die figuur getoon The figure shown	 steldie padreserwe voor van 'n gedeelte represents the road reserve of a portion van Nasionale Roete N17 of National Route N17	Vel Sheet	van 2	of 27
			Plan	P1040/18	

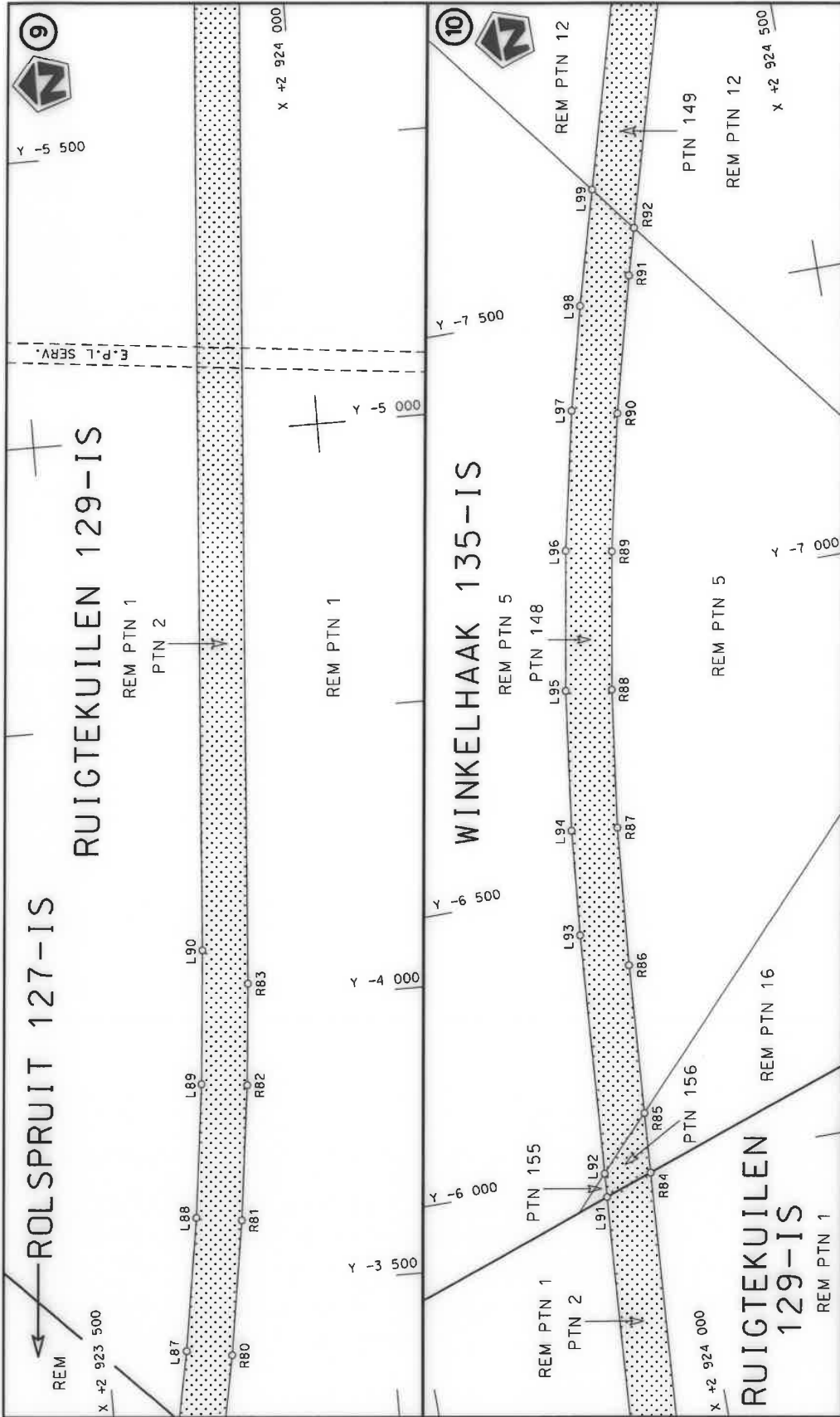


<p>Die Suid Afrikaanse Nasionale Padagentskap MSB Bpk The South African National Roads Agency SOC Ltd</p>	<p>Die figuur getoon The figure shown</p> 	<p>steldie padreserwe voor van 'n gedeelte represents the road reserve of a portion van Nasionale Roete N17 of National Route Seksie Section</p> <p>3</p>	<p>Vel Sheet 3 of 27 Plan P1040/18</p>
---	---	---	--

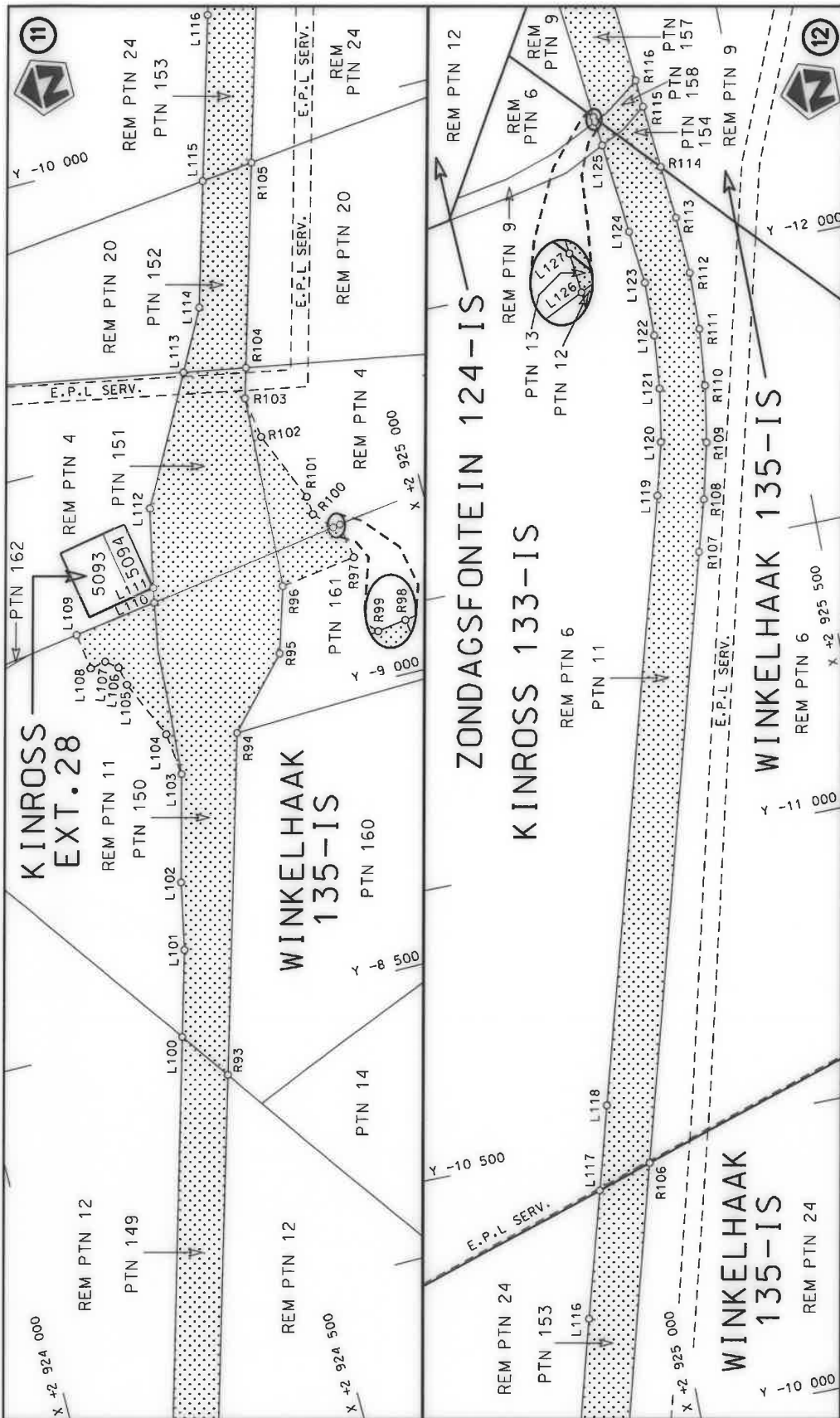





Die Suid Afrikaanse Nasionale Padagentskap MSB Bpk The South African National Roads Agency SOC Ltd	Die figuur getoon The figure shown	steldie padreserwe voor van 'n gedeelte represents the road reserve of a portion van Nasionale Roete N17 Sekste of National Route N17 Section	Vel Sheet 4 van of 27
			Plan P1040/18

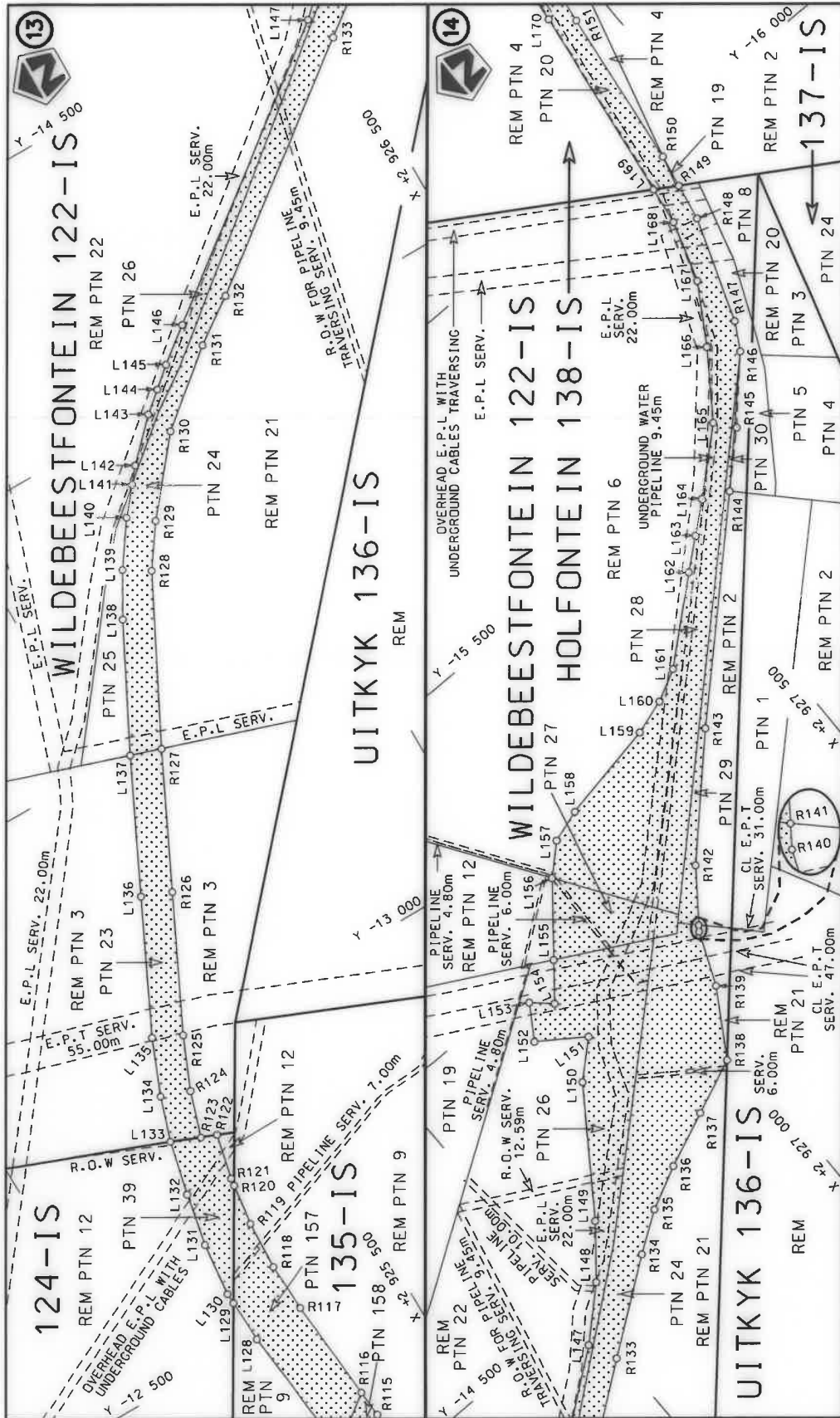


<p>Die Suid Afrikaanse Nasionale Padagentskap MSB Bpk The South African National Roads Agency SOC Ltd</p>	<p>Die figuur getoon The figure shown</p> 	<p>steldie padreserwe voor van 'n gedeelte represents the road reserve of a portion van Nasionale Roete N17 of National Route N17</p> <p>3</p>	<p>Vel Sheet 5 of 27 Plan P1040/18</p>
---	---	--	--

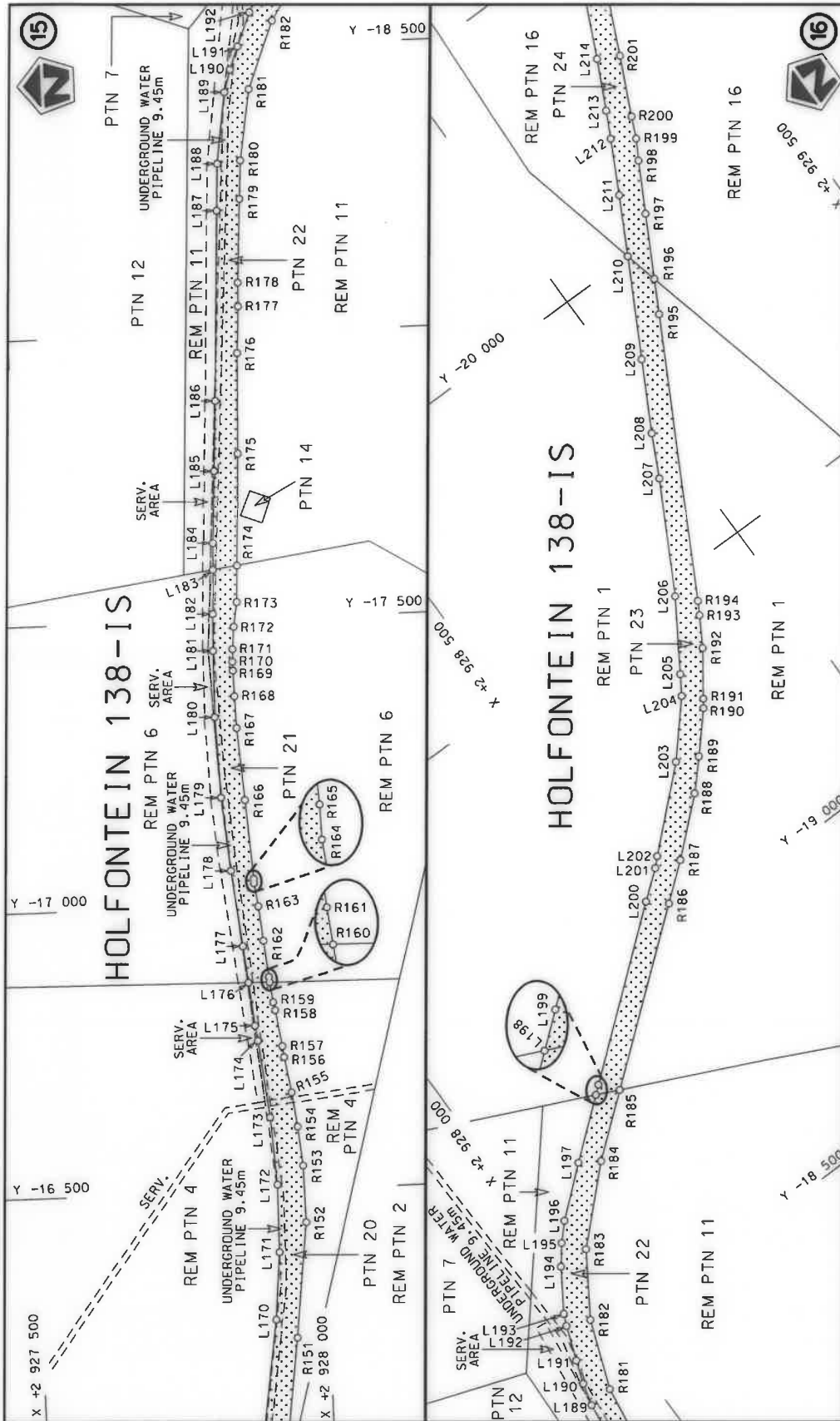



Die Suid Afrikaanse Nasionale Padagentskap MSB Bpk The South African National Roads Agency SOC Ltd	Die figuur getoon The figure shown		steldie padreserwe voor van 'n gedeelte represents the road reserve of a portion van Nasionale Roete N17 of National Route	Vel Sheet	van 6	of 27
				3	Plan	P1040/18

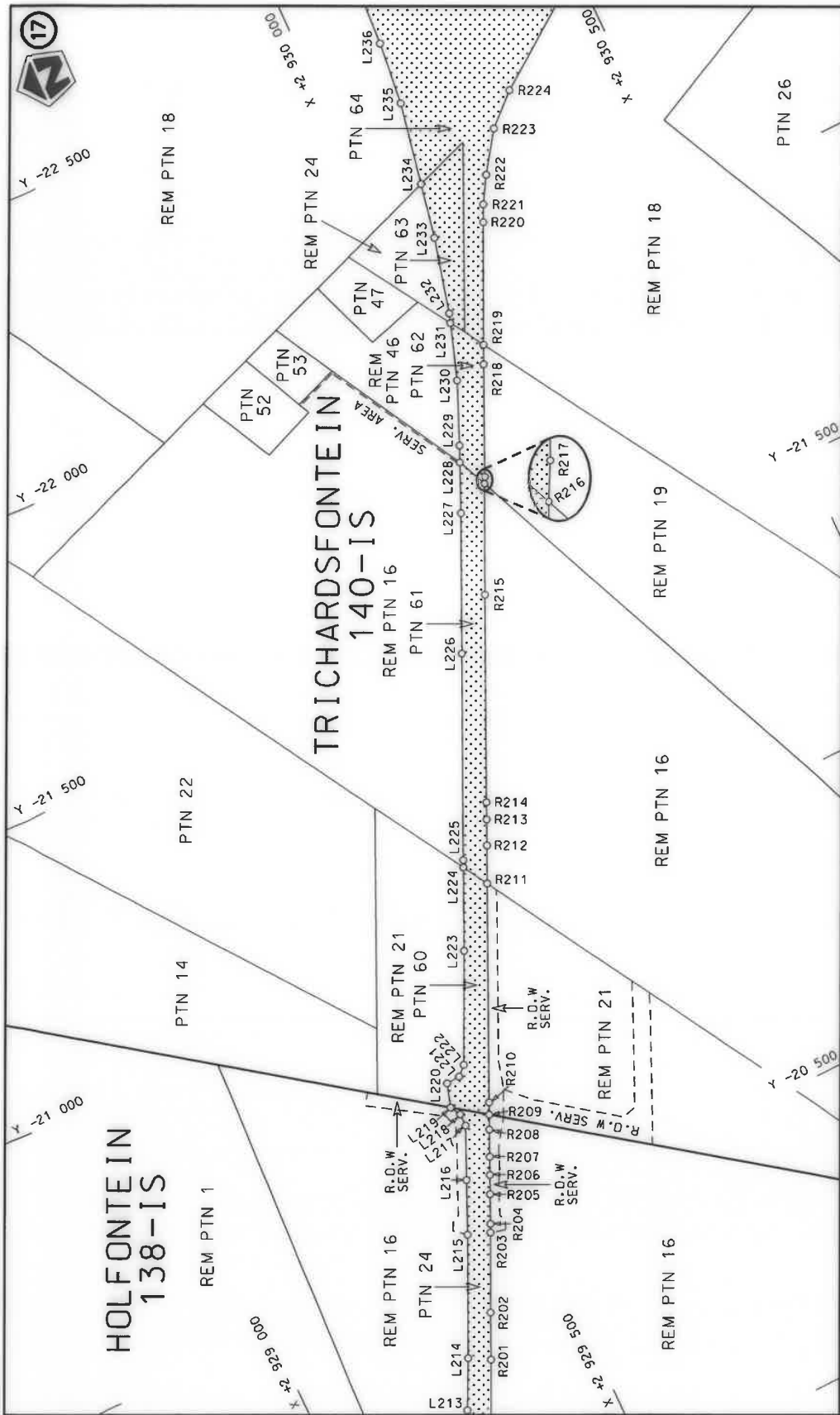




<p>Die Suid-Afrikaanse Nasionale Padagentskap MSB Bpk The South African National Roads Agency SOC Ltd</p>	<p>Die figuur getoon The figure shown</p>	<p>stelt die padreserwe voor van 'n gedeelte represents the road reserve of a portion van Nasionale Roete N17 of National Route N17</p> <p>Seksie Section</p>	<p>Vel Sheet</p> <p>7 of</p> <p>27</p> <p>Plan P1040/18</p>
---	---	---	---

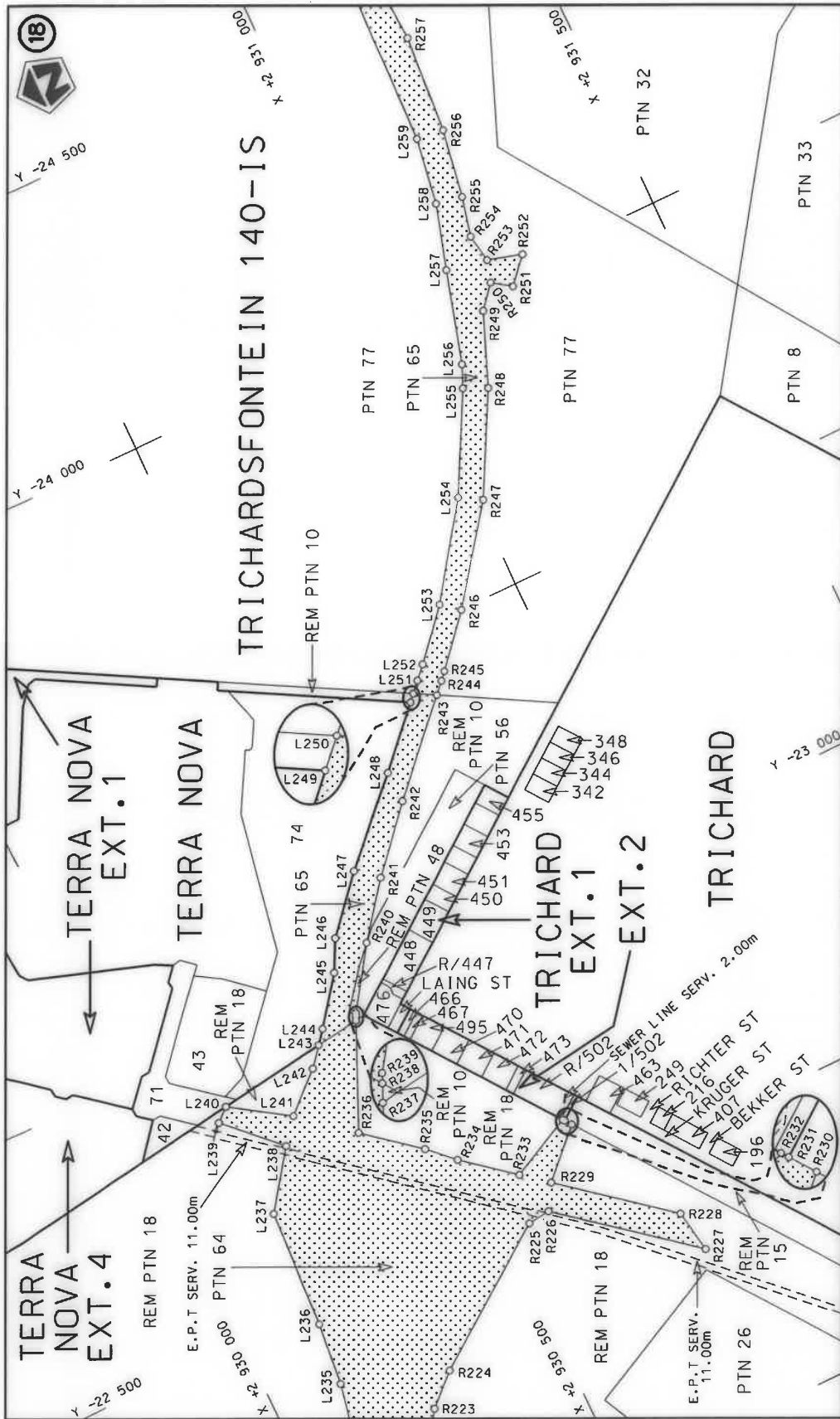


Die Suid Afrikaanse Nasionale Padagentskap MSB Bpk The South African National Roads Agency SOC Ltd	Die figuur getoon The figure shown		steldie padreserwe voor van 'n gedeelte represents the road reserve of a portion van Nasionale Roete N17 of National Route Section	Vel Sheet	van 8	of 27
				Plan	P1040/18	

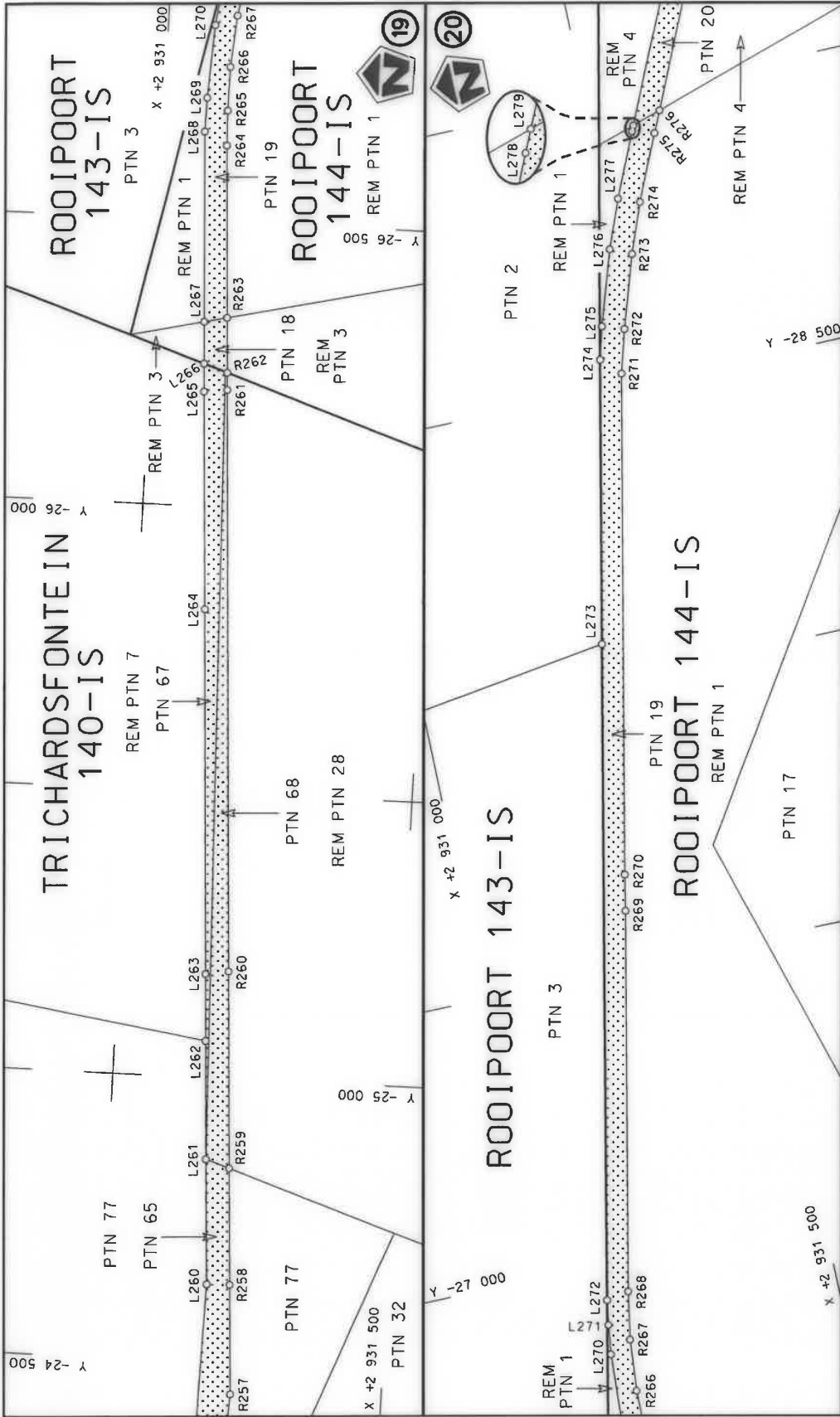


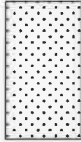
<p>Die Suid Afrikaanse Nasionale Padagentskap MSB Bpk The South African National Roads Agency SOC Ltd</p>	<p>Die figuur getoon The figure shown</p> 	<p>steldie padreserwe voor van 'n gedeelte represents the road reserve of a portion van Nasionale Roete N17 Sekse of National Route N17 Section</p>	<p>Vel Sheet 9 of 27 Plan P1040/18</p>
---	---	---	--



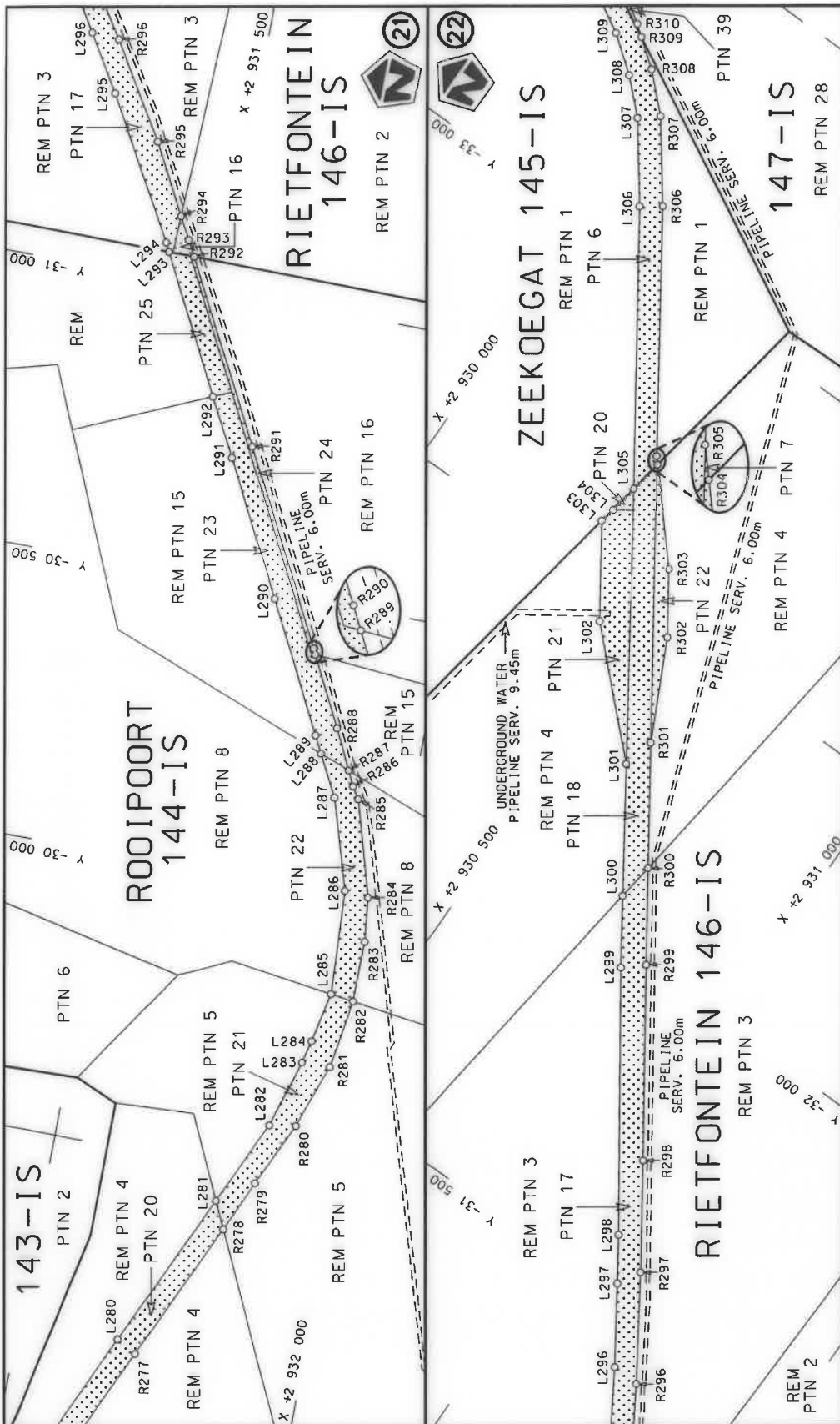


Die Suid Afrikaanse Nasionale Padagentskap MSB Bpk The South African National Roads Agency SOC Ltd	Die figuur getoon The figure shown		steldie padreserwe voor van 'n gedeelte represents the road reserve of a portion van Nasionale Roete N17 Seksie of National Route N17 Section	
			3	3
			Vel Sheet	van of
			10	27
			Plan	P1040/18

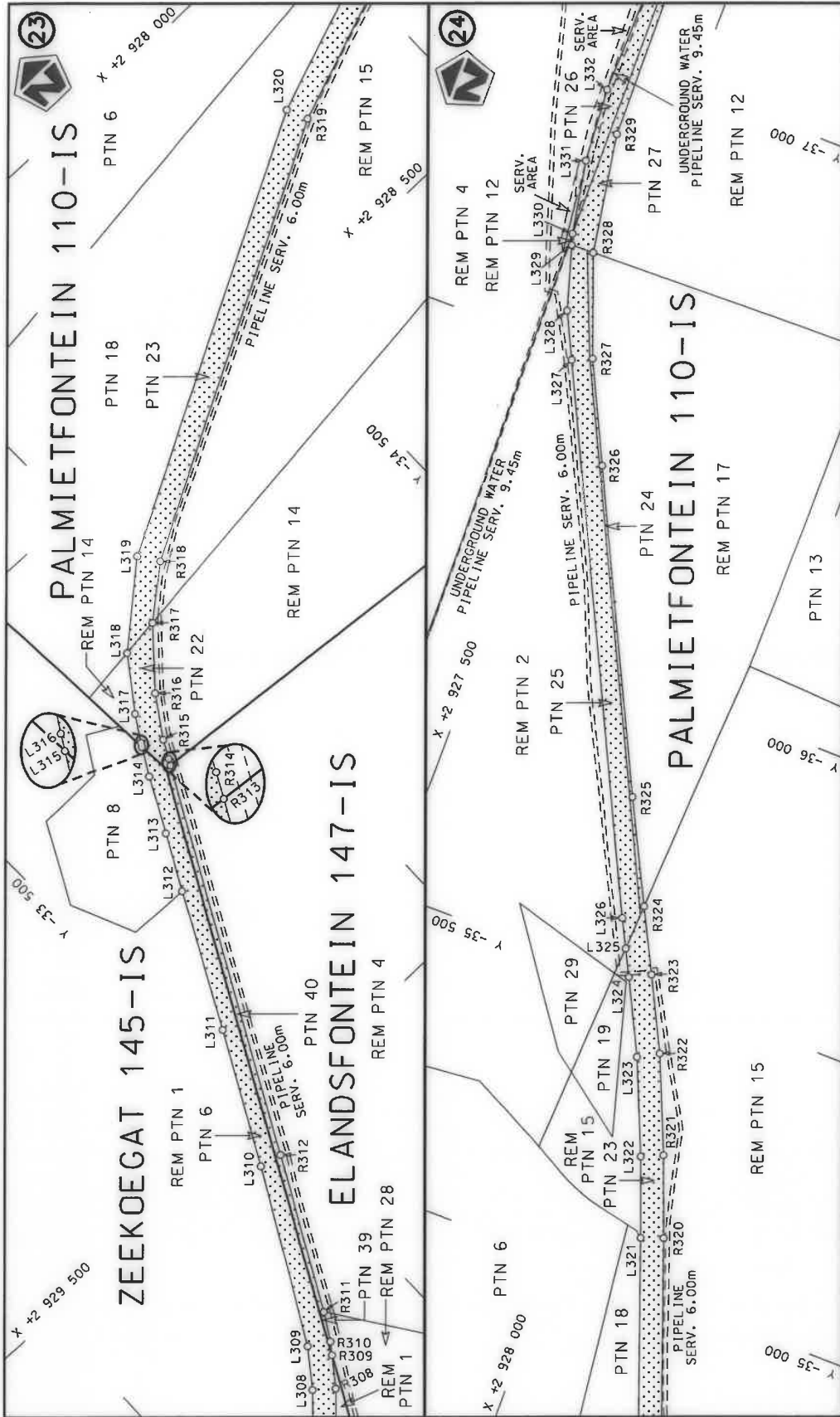


<p>Die Suid Afrikaanse Nasionale Padagentskap MSB Bpk The South African National Roads Agency SOC Ltd</p>	<p>Die figuur getoon The figure shown</p> 	<p>steldie padreserwe voor van 'n gedeelte represents the road reserve of a portion van Nasionale Roete N17 of National Route Seksie N17 Section</p>	<p>Vel Sheet 11 van of 27 Plan P1040/18</p>
---	---	--	---

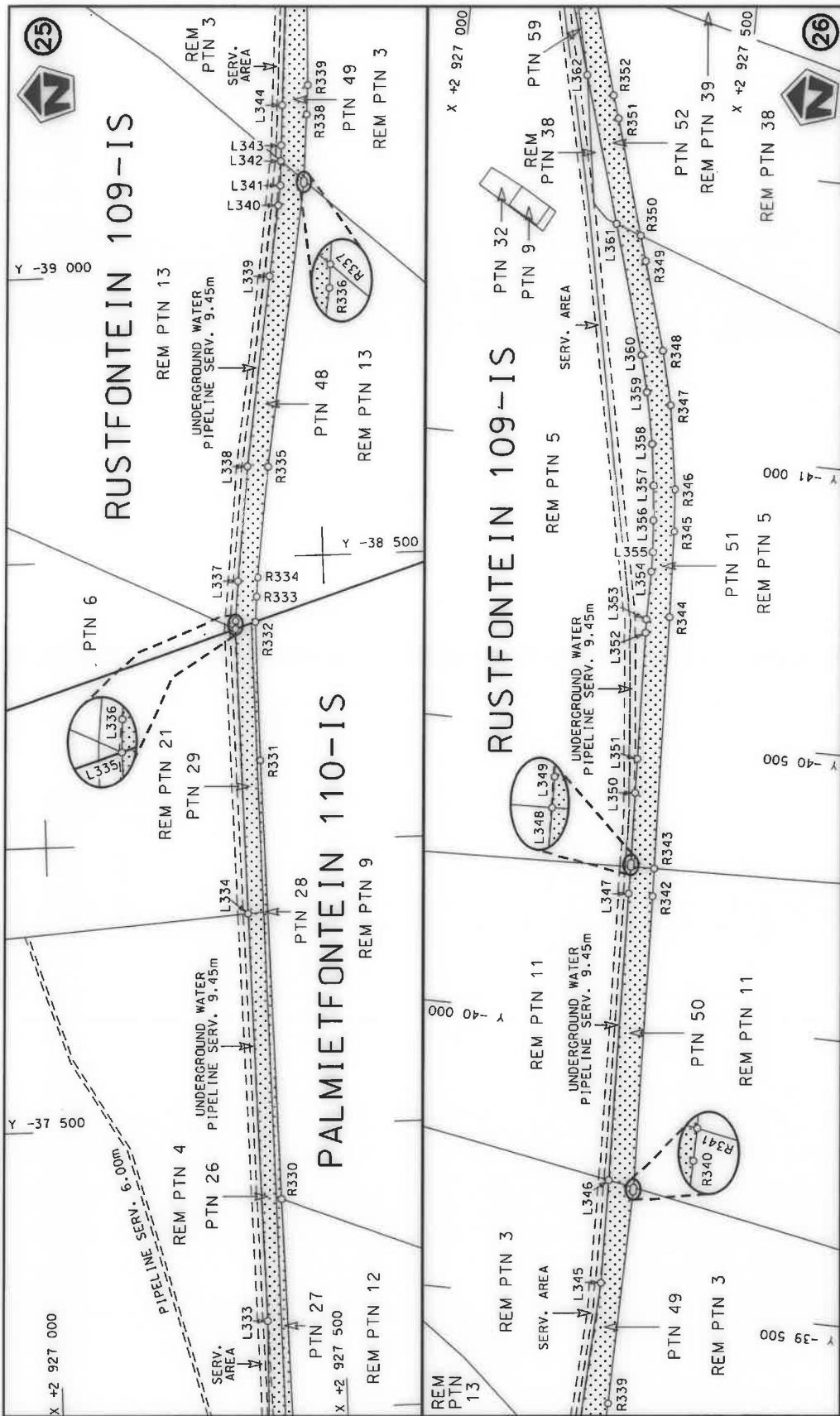




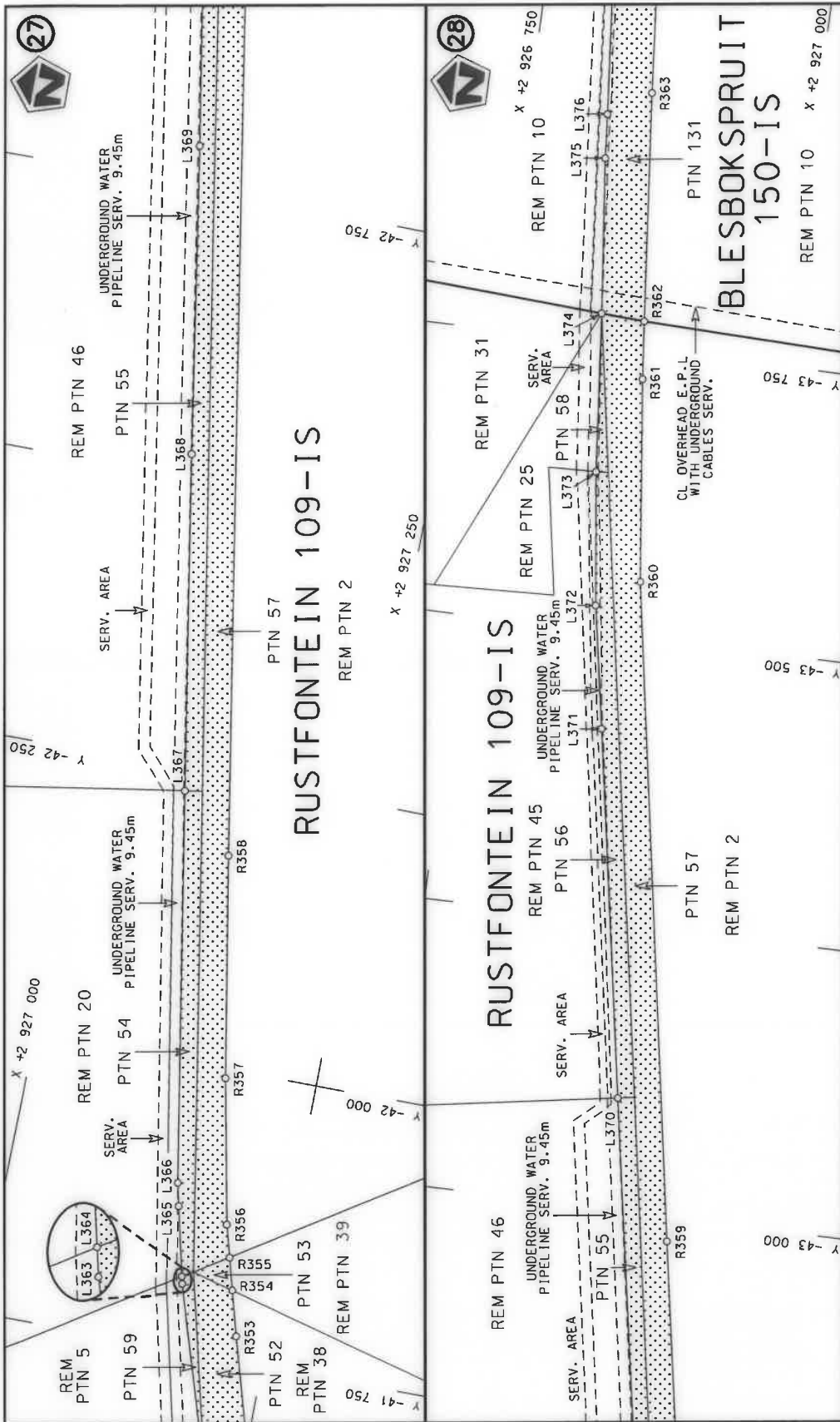
Die Suid Afrikaanse Nasionale Padagentskap MSB Bpk The South African National Roads Agency SOC Ltd	Die figuur getoon The figure shown	stelt die padreserwe voor van 'n gedeelte represents the road reserve of a portion van Nasionale Roete N17 of National Route N17 Seksie Section	Vel Sheet 12 of 27
		3	Plan P1040/18



<p>Die Suid Afrikaanse Nasionale Padagentskap MSB Bpk The South African National Roads Agency SOC Ltd</p>	<p>Die figuur getoon The figure shown</p> 	<p>steldie padreserwe voor van 'n gedeelte represents the road reserve of a portion van Nasionale Roete N17 of National Route N17</p> <p>Seksie Section</p> <p>3</p>	<p>Vel Sheet</p> <p>13 of 27</p> <p>Plan P1040/18</p>
---	---	--	---

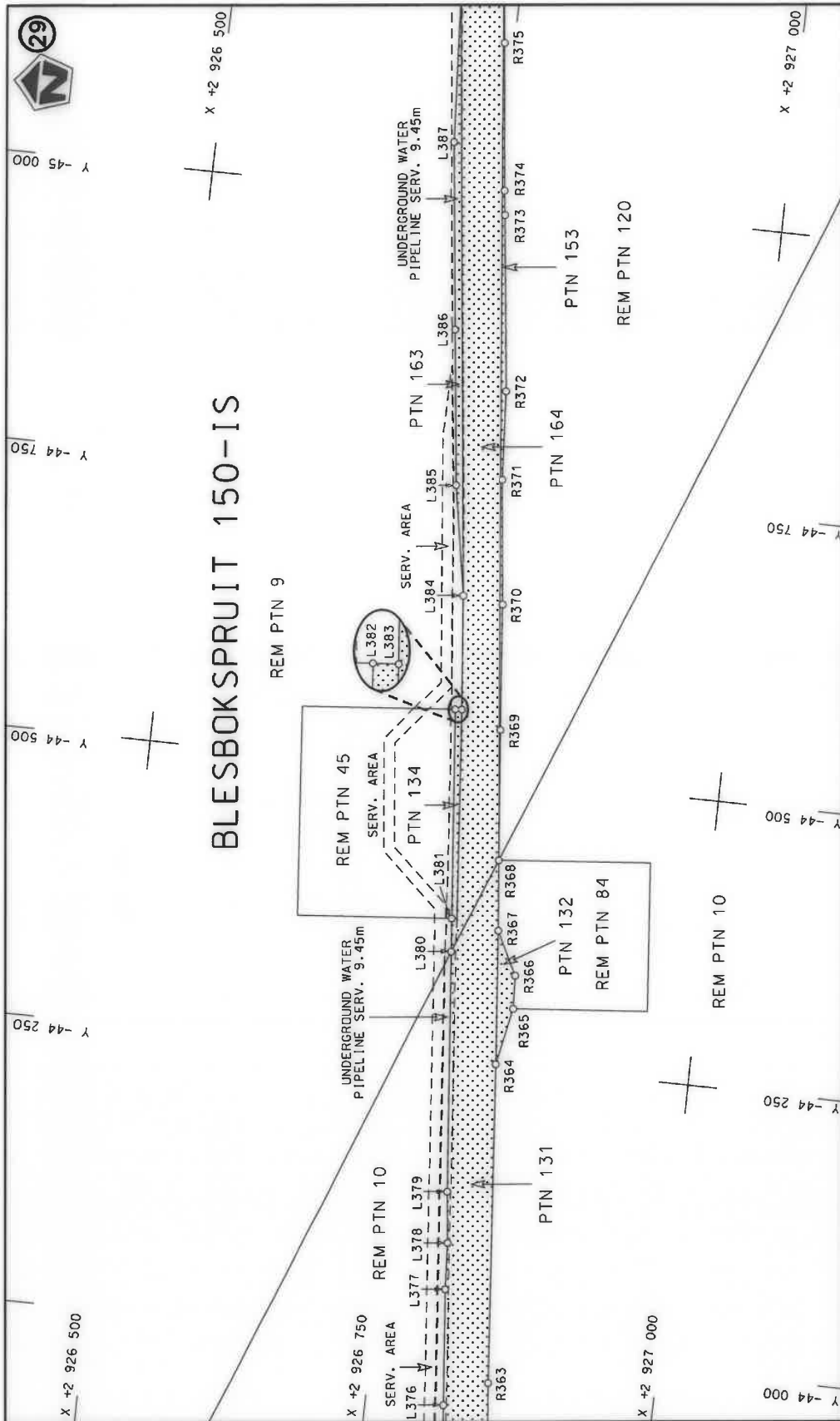


Die Suid Afrikaanse Nasionale Padagentskap MSB Bpk The South African National Roads Agency SOC Ltd	Die figuur getoon The figure shown		steldie padreserwe voor van 'n gedeelte represents the road reserve of a portion van Nasionale Roete N17 of National Route N17	
			3	Seksie Section
			Vel Sheet	van of
			14	27
			Plan	P1040/18



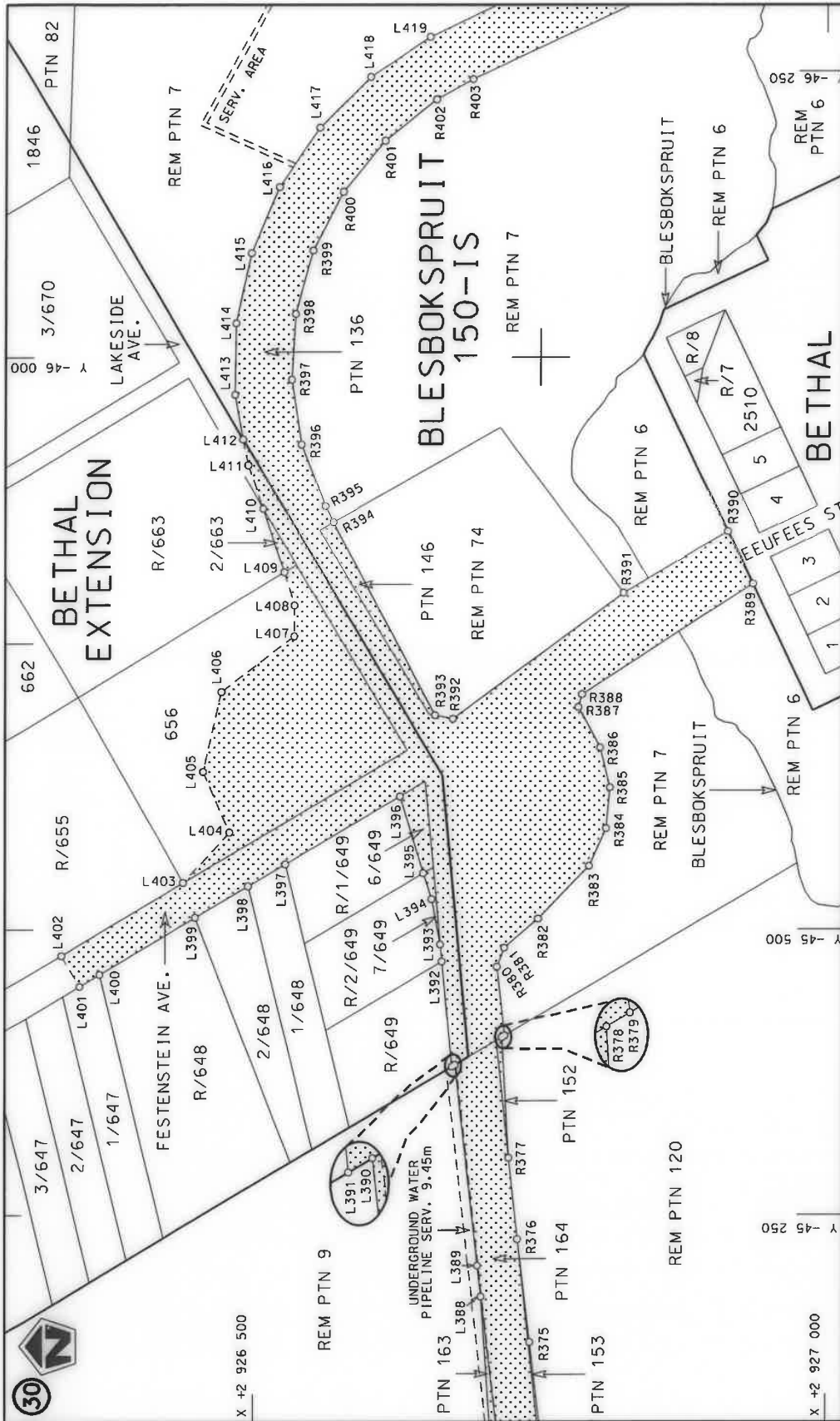
Die Suid-Afrikaanse Nasionale Padagentskap MSB Bpk The South African National Roads Agency SOC Ltd	Die figuur getoon The figure shown	steilte padreserwe voor van 'n gedeelte represents the road reserve of a portion van Nasionale Roete N17 of National Route Section	Vel Sheet	van of	27
				3	Plan P1040/18




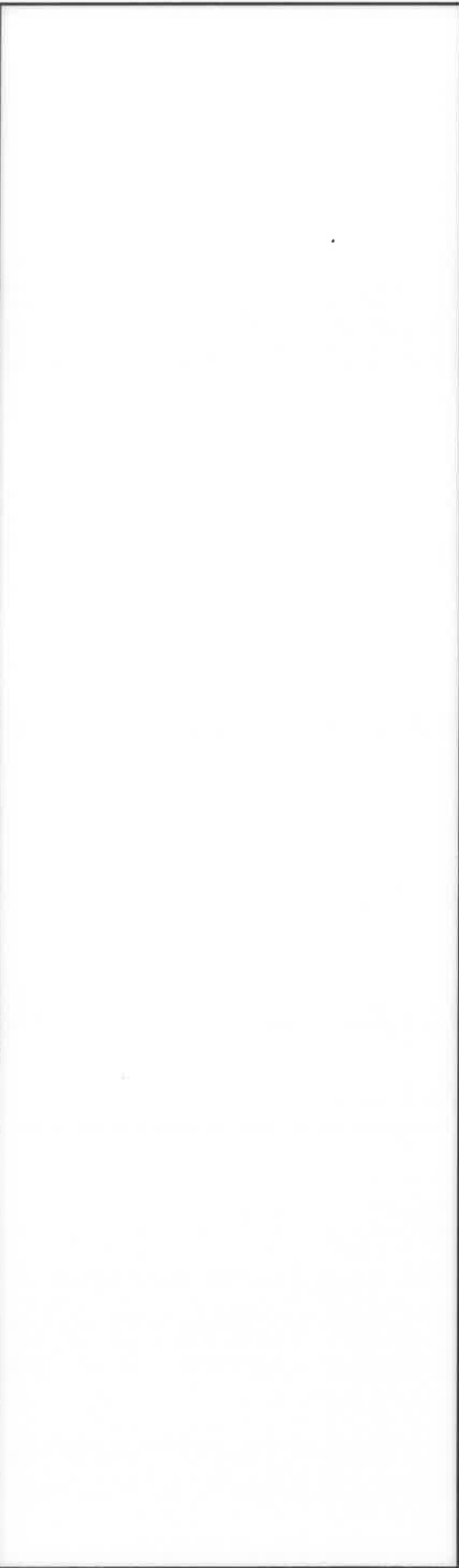


<p>Die Suid Afrikaanse Nasionale Padagentskap MSB Bpk The South African National Roads Agency SOC Ltd</p>	<p>Die figuur getoon The figure shown</p>	<p>stelt die padreserwe voor van 'n gedeelte represents the road reserve of a portion van Nasionale Roete N17 Sektie of National Route N17 Section</p>	<p>Vel Sheet 16 van of 27 Plan P1040/18</p>
---	---	--	---





<p>Die Suid Afrikaanse Nasionale Padagentskap MSB Bpk The South African National Roads Agency SOC Ltd</p>	<p>Die figuur getoon The figure shown</p>		<p>stelt die padreserwe voor van 'n gedeelte represents the road reserve of a portion van Nasionale Roete N17 of National Route</p>	
			<p>3</p>	<p>Seksie Section</p>
<p>Vel Sheet</p>		<p>17 of</p>		<p>27</p>
<p>Plan</p>		<p>P1040/18</p>		<p>3</p>



Die Suid Afrikaanse Nasionale Padagentskap MSB Bpk The South African National Roads Agency SOC Ltd	Die figuur getoon The figure shown		steldie padreserwe voor van 'n gedeelte represents the road reserve of a portion van Nasionale Roete N17 of National Route		3
			Vel Sheet	18 of	27 of

PADRESERWE KOÖRDINATE / ROAD RESERVE CO-ORDINATES					
LINKERKANT/LEFT HAND SIDE			REGTERKANT/RIGHT HAND SIDE		
	Y	X	WG 29°	Y	X
L1	13 892.55	2 920 833.29		R1	13 864.65 2 920 922.13
L2	13 821.55	2 920 849.68		R2	13 837.90 2 920 927.98
L3	13 697.45	2 920 875.62		R3	13 670.62 2 920 965.40
L4	13 569.57	2 920 899.12		R4	13 558.03 2 920 990.59
L5	13 462.61	2 920 923.30		R5	13 399.84 2 921 019.42
L6	13 384.17	2 920 941.03		R6	13 067.20 2 921 091.08
L7	13 033.60	2 921 013.33		R7	13 022.37 2 921 103.22
L8	12 990.45	2 921 021.84		R8	12 631.52 2 921 182.77
L9	12 962.90	2 921 027.08		R9	12 277.72 2 921 254.78
L10	12 623.56	2 921 099.99		R10	12 074.26 2 921 296.19
L11	12 057.77	2 921 218.11		R11	11 841.94 2 921 339.33
L12	11 829.26	2 921 260.31		R12	11 607.98 2 921 371.39
L13	11 599.00	2 921 291.91		R13	11 538.35 2 921 377.56
L14	11 533.58	2 921 297.66		R14	11 372.80 2 921 392.23
L15	11 258.98	2 921 314.25		R15	11 136.93 2 921 402.24
L16	11 128.04	2 921 322.16		R16	10 900.85 2 921 401.13
L17	10 903.11	2 921 321.06		R17	10 664.19 2 921 388.82
L18	10 671.05	2 921 309.07		R18	10 423.35 2 921 364.74
L19	10 439.82	2 921 286.17		R19	10 196.56 2 921 331.34
L20	10 209.89	2 921 252.58		R20	10 071.48 2 921 309.13
L21	10 087.09	2 921 230.73		R21	10 042.06 2 921 303.24
L22	10 057.70	2 921 224.82		R22	9 964.67 2 921 286.32
L23	9 981.85	2 921 208.19		R23	9 818.17 2 921 250.58
L24	9 823.63	2 921 169.64		R24	9 735.30 2 921 230.36
L25	9 756.10	2 921 153.19		R25	9 508.78 2 921 163.80
L26	9 533.19	2 921 087.60		R26	9 285.67 2 921 086.70
L27	9 313.59	2 921 011.66		R27	9 066.30 2 920 999.13
L28	9 097.75	2 920 925.63		R28	8 753.97 2 920 866.03
L29	8 785.41	2 920 792.43		R29	8 525.02 2 920 777.69
L30	8 560.39	2 920 694.29		R30	8 198.66 2 920 656.10
L31	8 434.85	2 920 640.35		R31	7 916.34 2 920 604.75
L32	8 082.67	2 920 537.61		R32	7 876.02 2 920 596.89
L33	7 854.39	2 920 506.46		R33	7 816.99 2 920 586.17
L34	7 813.02	2 920 497.12		R34	7 811.93 2 920 585.25
L35	7 666.47	2 920 495.13		R35	7 615.53 2 920 573.17
L36	7 515.65	2 920 493.09		R36	7 399.21 2 920 578.12
L37	7 354.10	2 920 502.64		R37	7 157.74 2 920 611.01
L38	7 312.88	2 920 505.08		R38	7 064.72 2 920 623.67
L39	7 048.68	2 920 545.35		R39	6 832.94 2 920 671.70
L40	6 816.68	2 920 593.36		R40	6 776.98 2 920 686.29
L41	6 670.17	2 920 610.35		R41	6 597.99 2 920 732.96
L42	6 593.23	2 920 619.44		R42	6 490.97 2 920 762.66
L43	6 493.86	2 920 623.40		R43	6 406.47 2 920 795.03
L44	6 404.29	2 920 610.00		R44	6 331.41 2 920 841.76
L45	6 292.20	2 920 582.80		R45	6 327.92 2 920 843.94
L46	6 231.10	2 920 574.23		R46	6 227.49 2 920 920.94
L47	6 214.80	2 920 571.94		R47	6 183.85 2 920 948.64
L48	6 189.42	2 920 571.97		R48	6 141.86 2 920 964.82
L49	6 154.56	2 920 575.25		R49	6 097.31 2 920 969.33
L50	6 118.15	2 920 585.82		R50	6 077.24 2 920 968.83
L51	6 089.38	2 920 594.17		R51	6 023.49 2 920 971.73

Vel 19 Van 27  
Sheet of

P1040/18

PADRESERWE KOÖRDINATE / ROAD RESERVE CO-ORDINATES						
LINKERKANT/LEFT HAND SIDE				REGTERKANT/RIGHT HAND SIDE		
	Y	X	WG 29°		Y	X
L52	6 047.61	2 920 626.70		R52	6 001.39	2 920 972.89
L53	6 007.41	2 920 658.14		R53	5 886.17	2 920 913.75
L54	5 920.51	2 920 725.81		R54	5 718.22	2 920 902.79
L55	5 706.30	2 920 809.33		R55	5 309.34	2 920 987.25
L56	5 441.19	2 920 878.32		R56	5 070.82	2 921 041.66
L57	5 298.26	2 920 907.78		R57	4 834.74	2 921 105.83
L58	5 091.70	2 920 912.61		R58	4 704.84	2 921 146.95
L59	4 930.74	2 920 953.90		R59	4 601.50	2 921 179.66
L60	4 916.63	2 920 978.36		R60	4 470.60	2 921 227.10
L61	4 921.91	2 920 997.83		R61	4 371.49	2 921 263.02
L62	4 811.81	2 921 027.86		R62	3 727.00	2 921 511.71
L63	4 710.74	2 921 059.85		R63	2 355.92	2 922 040.79
L64	4 575.38	2 921 102.70		R64	1 687.45	2 922 298.73
L65	4 400.53	2 921 166.07		R65	972.72	2 922 574.52
L66	4 380.27	2 921 173.89		R66	851.14	2 922 619.65
L67	3 849.82	2 921 378.57		R67	755.44	2 922 655.18
L68	2 312.96	2 921 971.60		R68	524.15	2 922 734.39
L69	1 627.35	2 922 236.15		R69	464.49	2 922 754.82
L70	1 016.00	2 922 472.07		R70	202.76	2 922 836.98
L71	788.77	2 922 556.43		R71	168.20	2 922 847.83
L72	728.22	2 922 578.90		R72	- 128.93	2 922 932.80
L73	555.38	2 922 634.27		R73	- 353.34	2 922 990.80
L74	336.27	2 922 704.47		R74	- 720.69	2 923 080.72
L75	169.75	2 922 761.73		R75	-2 273.82	2 923 460.92
L76	149.48	2 922 767.52		R76	-2 567.63	2 923 532.84
L77	- 167.76	2 922 858.24		R77	-2 977.96	2 923 633.29
L78	- 540.09	2 922 953.20		R78	-3 151.60	2 923 672.71
L79	- 568.45	2 922 960.16		R79	-3 207.42	2 923 683.42
L80	-2 365.21	2 923 400.08		R80	-3 384.76	2 923 717.63
L81	-2 584.91	2 923 454.71		R81	-3 619.33	2 923 754.53
L82	-2 638.24	2 923 463.95		R82	-3 854.97	2 923 783.47
L83	-2 688.28	2 923 480.02		R83	-4 032.35	2 923 799.22
L84	-2 939.34	2 923 541.47		R84	-5 989.29	2 923 939.94
L85	-3 168.20	2 923 593.43		R85	-6 094.09	2 923 947.48
L86	-3 277.04	2 923 614.31		R86	-6 354.37	2 923 966.20
L87	-3 398.70	2 923 637.86		R87	-6 595.50	2 923 988.46
L88	-3 630.56	2 923 674.31		R88	-6 835.56	2 924 020.58
L89	-3 863.48	2 923 702.93		R89	-7 074.09	2 924 062.38
L90	-4 097.26	2 923 723.70		R90	-7 310.74	2 924 113.88
L91	-5 960.47	2 923 857.65		R91	-7 545.07	2 924 175.00
L92	-6 001.60	2 923 860.61		R92	-7 625.68	2 924 197.94
L93	-6 421.30	2 923 890.79		R93	-8 397.05	2 924 417.39
L94	-6 604.63	2 923 907.74		R94	-8 974.03	2 924 581.54
L95	-6 847.94	2 923 940.26		R95	-9 090.09	2 924 688.96
L96	-7 089.75	2 923 982.65		R96	-9 203.20	2 924 723.32
L97	-7 329.62	2 924 034.88		R97	-9 221.20	2 924 856.80
L98	-7 507.76	2 924 081.31		R98	-9 282.84	2 924 847.65
L99	-7 704.67	2 924 136.95		R99	-9 281.01	2 924 835.08
L100	-8 481.43	2 924 356.44		R100	-9 312.12	2 924 806.30
L101	-8 628.42	2 924 397.98		R101	-9 344.49	2 924 803.48
L102	-8 744.67	2 924 421.44		R102	-9 466.59	2 924 750.40

Vel 20 Van  
Sheet of 27

P1040/18



PADRESERWE KOÖRDINATE / ROAD RESERVE CO-ORDINATES					
LINKERKANT/LEFT HAND SIDE			REGTERKANT/RIGHT HAND SIDE		
	Y	X	WG 29°	Y	X
L103	-8 928.62	2 924 469.08		R103	-9 538.88 2 924 739.64
L104	-9 003.44	2 924 459.46		R104	-9 590.46 2 924 754.18
L105	-9 104.56	2 924 415.02		R105	-9 936.20 2 924 851.66
L106	-9 137.21	2 924 408.39		R106	-10 453.92 2 924 997.63
L107	-9 153.21	2 924 388.11		R107	-11 489.05 2 925 289.49
L108	-9 148.21	2 924 360.72		R108	-11 577.96 2 925 315.57
L109	-9 210.91	2 924 351.36		R109	-11 674.84 2 925 339.14
L110	-9 231.91	2 924 496.51		R110	-11 773.24 2 925 355.51
L111	-9 257.67	2 924 501.12		R111	-11 872.59 2 925 364.60
L112	-9 393.84	2 924 529.66		R112	-11 972.30 2 925 366.33
L113	-9 610.20	2 924 645.20		R113	-12 071.90 2 925 360.72
L114	-9 713.15	2 924 700.18		R114	-12 164.47 2 925 351.17
L115	-9 926.32	2 924 760.34		R115	-12 273.93 2 925 340.96
L116	-10 206.30	2 924 839.37		R116	-12 321.54 2 925 336.52
L117	-10 423.90	2 924 901.51		R117	-12 504.50 2 925 319.43
L118	-10 567.97	2 924 942.66		R118	-12 590.43 2 925 315.34
L119	-11 600.45	2 925 235.82		R119	-12 676.38 2 925 319.06
L120	-11 691.09	2 925 259.65		R120	-12 748.36 2 925 328.76
L121	-11 783.61	2 925 275.06		R121	-12 761.62 2 925 330.55
L122	-11 877.00	2 925 283.79		R122	-12 840.21 2 925 348.54
L123	-11 970.74	2 925 285.41		R123	-12 850.40 2 925 322.06
L124	-12 063.89	2 925 274.63		R124	-12 929.95 2 925 347.61
L125	-12 221.54	2 925 256.91		R125	-13 020.69 2 925 386.40
L126	-12 264.30	2 925 252.11		R126	-13 246.97 2 925 497.05
L127	-12 273.42	2 925 251.08		R127	-13 473.15 2 925 607.60
L128	-12 495.90	2 925 226.08		R128	-13 750.85 2 925 750.25
L129	-12 571.07	2 925 223.02		R129	-13 822.98 2 925 800.33
L130	-12 590.24	2 925 222.24		R130	-13 945.00 2 925 902.04
L131	-12 684.05	2 925 232.76		R131	-14 046.45 2 926 026.14
L132	-12 776.20	2 925 250.83		R132	-14 100.97 2 926 103.85
L133	-12 871.14	2 925 272.60		R133	-14 395.34 2 926 494.03
L134	-12 948.33	2 925 297.71		R134	-14 507.15 2 926 644.84
L135	-13 044.85	2 925 336.99		R135	-14 553.06 2 926 712.59
L136	-13 267.93	2 925 446.06		R136	-14 590.30 2 926 786.49
L137	-13 490.89	2 925 555.08		R137	-14 630.97 2 926 882.72
L138	-13 702.89	2 925 664.10		R138	-14 671.64 2 926 978.96
L139	-13 777.90	2 925 707.52		R139	-14 784.41 2 927 047.22
L140	-13 853.57	2 925 760.06		R140	-14 876.12 2 927 085.21
L141	-13 898.59	2 925 797.37		R141	-14 885.31 2 927 092.10
L142	-13 924.55	2 925 818.88		R142	-14 969.44 2 927 155.05
L143	-13 990.19	2 925 883.61		R143	-15 142.53 2 927 322.36
L144	-14 019.87	2 925 918.84		R144	-15 433.89 2 927 621.68
L145	-14 049.56	2 925 954.05		R145	-15 511.58 2 927 702.56
L146	-14 095.17	2 926 013.80		R146	-15 609.92 2 927 792.50
L147	-14 444.45	2 926 471.86		R147	-15 656.99 2 927 819.36
L148	-14 520.95	2 926 552.69		R148	-15 837.72 2 927 883.34
L149	-14 604.42	2 926 620.39		R149	-15 902.09 2 927 895.58
L150	-14 805.26	2 926 759.97		R150	-15 959.45 2 927 906.36
L151	-14 859.56	2 926 819.42		R151	-16 240.01 2 927 942.73
L152	-14 913.89	2 926 741.07		R152	-16 441.60 2 927 965.80
L153	-14 972.49	2 926 778.12		R153	-16 540.83 2 927 963.80

Vel  
Sheet

21

Van  
of

27

P1040/18



PADRESERWE KOÖRDINATE / ROAD RESERVE CO-ORDINATES					
LINKERKANT/LEFT HAND SIDE			REGTERKANT/RIGHT HAND SIDE		
	Y	X	WG 29°	Y	X
L154	-14 942.16	2 926 810.94	R154	-16 609.27	2 927 956.62
L155	-15 002.00	2 926 859.00	R155	-16 669.47	2 927 948.00
L156	-15 114.05	2 926 949.00	R156	-16 731.76	2 927 937.49
L157	-15 159.28	2 926 997.09	R157	-16 751.00	2 927 935.04
L158	-15 177.81	2 927 053.91	R158	-16 814.28	2 927 924.89
L159	-15 211.23	2 927 229.76	R159	-16 828.42	2 927 921.76
L160	-15 230.50	2 927 290.78	R160	-16 863.55	2 927 917.08
L161	-15 259.15	2 927 345.65	R161	-16 873.14	2 927 915.81
L162	-15 371.45	2 927 475.53	R162	-16 936.75	2 927 908.51
L163	-15 413.20	2 927 525.46	R163	-16 997.04	2 927 901.75
L164	-15 454.97	2 927 575.35	R164	-17 037.69	2 927 895.72
L165	-15 544.64	2 927 676.13	R165	-17 045.39	2 927 895.52
L166	-15 653.69	2 927 752.39	R166	-17 183.66	2 927 884.73
L167	-15 753.19	2 927 813.54	R167	-17 309.99	2 927 874.73
L168	-15 859.35	2 927 847.44	R168	-17 365.55	2 927 872.78
L169	-15 925.78	2 927 857.01	R169	-17 410.54	2 927 871.75
L170	-16 272.96	2 927 907.12	R170	-17 425.96	2 927 871.62
L171	-16 390.85	2 927 917.22	R171	-17 448.06	2 927 872.48
L172	-16 509.24	2 927 917.90	R172	-17 487.00	2 927 875.63
L173	-16 627.24	2 927 909.09	R173	-17 529.86	2 927 882.51
L174	-16 762.02	2 927 892.70	R174	-17 593.82	2 927 885.14
L175	-16 788.44	2 927 888.55	R175	-17 789.12	2 927 893.18
L176	-16 864.21	2 927 879.64	R176	-17 964.58	2 927 898.02
L177	-16 928.23	2 927 872.11	R177	-18 046.03	2 927 902.36
L178	-17 060.79	2 927 856.19	R178	-18 087.37	2 927 903.35
L179	-17 189.32	2 927 843.86	R179	-18 233.29	2 927 911.02
L180	-17 330.33	2 927 837.96	R180	-18 300.28	2 927 914.72
L181	-17 446.24	2 927 839.09	R181	-18 423.92	2 927 933.55
L182	-17 510.66	2 927 840.71	R182	-18 541.95	2 927 978.22
L183	-17 587.84	2 927 843.54	R183	-18 645.99	2 928 045.63
L184	-17 634.41	2 927 845.25	R184	-18 754.52	2 928 158.39
L185	-17 759.96	2 927 851.55	R185	-18 835.41	2 928 258.34
L186	-17 882.65	2 927 857.88	R186	-19 047.46	2 928 520.38
L187	-18 214.25	2 927 871.35	R187	-19 096.96	2 928 581.53
L188	-18 296.04	2 927 875.04	R188	-19 176.25	2 928 670.26
L189	-18 420.24	2 927 891.21	R189	-19 223.77	2 928 714.37
L190	-18 459.46	2 927 902.04	R190	-19 287.01	2 928 770.83
L191	-18 499.25	2 927 916.44	R191	-19 300.54	2 928 780.35
L192	-18 558.07	2 927 938.92	R192	-19 372.73	2 928 832.05
L193	-18 578.07	2 927 947.69	R193	-19 422.19	2 928 861.36
L194	-18 647.28	2 927 992.76	R194	-19 444.02	2 928 873.91
L195	-18 679.95	2 928 018.24	R195	-19 887.53	2 929 116.36
L196	-18 708.32	2 928 045.33	R196	-19 942.24	2 929 146.22
L197	-18 775.77	2 928 124.93	R197	-20 043.19	2 929 201.23
L198	-18 853.25	2 928 219.66	R198	-20 125.32	2 929 246.16
L199	-18 864.98	2 928 234.00	R199	-20 158.67	2 929 265.61
L200	-19 073.59	2 928 490.39	R200	-20 194.55	2 929 281.74
L201	-19 111.14	2 928 537.88	R201	-20 292.09	2 929 327.92
L202	-19 126.11	2 928 553.07	R202	-20 367.56	2 929 362.84
L203	-19 239.65	2 928 677.14	R203	-20 495.26	2 929 422.86
L204	-19 326.42	2 928 753.25	R204	-20 508.98	2 929 429.32

Vel  
Sheet

22

Van  
of

27

P1040/18

PADRESERWE KOÖRDINATE / ROAD RESERVE CO-ORDINATES					
LINKERKANT/LEFT HAND SIDE			REGTERKANT/RIGHT HAND SIDE		
	Y	X	WG 29°	Y	X
L205	-19 358.74	2 928 774.00		R205	-20 556.61 2 929 450.89
L206	-19 473.86	2 928 847.44		R206	-20 587.37 2 929 465.05
L207	-19 656.14	2 928 947.14		R207	-20 616.36 2 929 478.38
L208	-19 727.63	2 928 983.08		R208	-20 660.01 2 929 498.20
L209	-19 842.28	2 929 045.52		R209	-20 683.85 2 929 509.13
L210	-20 001.62	2 929 132.31		R210	-20 703.48 2 929 518.26
L211	-20 096.52	2 929 183.47		R211	-21 053.86 2 929 678.97
L212	-20 184.88	2 929 229.61		R212	-21 114.73 2 929 707.13
L213	-20 229.22	2 929 252.34		R213	-21 156.22 2 929 726.11
L214	-20 311.55	2 929 292.77		R214	-21 183.86 2 929 738.67
L215	-20 508.78	2 929 384.57		R215	-21 515.41 2 929 891.09
L216	-20 596.85	2 929 423.90		R216	-21 692.85 2 929 973.22
L217	-20 684.43	2 929 463.10		R217	-21 703.55 2 929 978.76
L218	-20 706.01	2 929 463.23		R218	-21 883.56 2 930 060.66
L219	-20 724.05	2 929 453.20		R219	-21 914.72 2 930 074.86
L220	-20 765.27	2 929 465.92		R220	-22 109.97 2 930 165.54
L221	-20 767.28	2 929 489.90		R221	-22 138.61 2 930 178.83
L222	-20 782.55	2 929 506.03		R222	-22 183.37 2 930 205.41
L223	-20 963.90	2 929 591.64		R223	-22 251.49 2 930 251.78
L224	-21 097.39	2 929 653.03		R224	-22 300.65 2 930 305.14
L225	-21 109.22	2 929 658.48		R225	-22 473.65 2 930 542.81
L226	-21 439.43	2 929 810.37		R226	-22 478.68 2 930 582.08
L227	-21 663.65	2 929 913.47		R227	-22 300.45 2 930 801.70
L228	-21 745.34	2 929 949.45		R228	-22 375.81 2 930 788.16
L229	-21 772.48	2 929 961.41		R229	-22 522.20 2 930 607.78
L230	-21 877.87	2 930 006.09		R230	-22 599.20 2 930 683.90
L231	-21 974.21	2 930 038.15		R231	-22 610.28 2 930 675.57
L232	-21 990.63	2 930 043.62		R232	-22 613.34 2 930 673.27
L233	-22 121.97	2 930 076.18		R233	-22 558.06 2 930 563.63
L234	-22 217.57	2 930 094.83		R234	-22 629.13 2 930 476.06
L235	-22 361.22	2 930 122.85		R235	-22 670.83 2 930 432.59
L236	-22 471.79	2 930 134.37		R236	-22 746.46 2 930 339.45
L237	-22 680.85	2 930 145.76		R237	-22 926.65 2 930 419.72
L238	-22 779.68	2 930 216.01		R238	-22 934.44 2 930 423.18
L239	-22 866.65	2 930 127.88		R239	-22 938.59 2 930 425.03
L240	-22 887.18	2 930 150.95		R240	-23 042.19 2 930 494.82
L241	-22 821.59	2 930 250.04		R241	-23 135.09 2 930 565.77
L242	-22 882.30	2 930 316.33		R242	-23 239.99 2 930 657.40
L243	-22 915.37	2 930 342.92		R243	-23 382.48 2 930 790.89
L244	-22 938.34	2 930 361.39		R244	-23 401.74 2 930 809.11
L245	-23 018.81	2 930 421.47		R245	-23 414.54 2 930 821.11
L246	-23 072.77	2 930 448.88		R246	-23 498.64 2 930 894.00
L247	-23 165.36	2 930 528.63		R247	-23 656.61 2 931 011.14
L248	-23 295.99	2 930 655.10		R248	-23 830.20 2 931 102.46
L249	-23 390.73	2 930 743.92		R249	-23 956.32 2 931 152.02
L250	-23 402.43	2 930 754.89		R250	-23 995.32 2 931 184.84
L251	-23 419.97	2 930 771.51		R251	-23 972.15 2 931 217.99
L252	-23 441.82	2 930 791.84		R252	-24 015.79 2 931 256.81
L253	-23 523.94	2 930 863.02		R253	-24 033.75 2 931 196.05
L254	-23 680.05	2 930 972.74		R254	-24 083.47 2 931 187.52
L255	-23 848.98	2 931 061.59		R255	-24 152.80 2 931 203.08

Vel Sheet 23 Van of 27

P1040/18

PADRESERWE KOÖRDINATE / ROAD RESERVE CO-ORDINATES						
LINKERKANT/LEFT HAND SIDE				REGTERKANT/RIGHT HAND SIDE		
	Y	X	WG 29°		Y	X
L256	-23 887.76	2 931 078.21		R256	-24 273.07	2 931 222.24
L257	-24 048.92	2 931 123.50		R257	-24 445.94	2 931 234.12
L258	-24 162.19	2 931 156.01		R258	-24 638.25	2 931 223.43
L259	-24 278.75	2 931 174.47		R259	-24 842.39	2 931 212.26
L260	-24 637.08	2 931 183.88		R260	-25 187.51	2 931 193.39
L261	-24 856.32	2 931 171.11		R261	-26 205.94	2 931 137.54
L262	-25 063.77	2 931 160.12		R262	-26 236.05	2 931 135.88
L263	-25 181.23	2 931 153.90		R263	-26 331.92	2 931 130.66
L264	-25 820.19	2 931 119.11		R264	-26 633.35	2 931 113.92
L265	-26 201.18	2 931 097.44		R265	-26 694.30	2 931 112.05
L266	-26 249.90	2 931 094.96		R266	-26 770.93	2 931 112.67
L267	-26 323.17	2 931 091.32		R267	-26 861.18	2 931 120.48
L268	-26 655.86	2 931 074.35		R268	-26 944.62	2 931 135.16
L269	-26 715.19	2 931 075.51		R269	-27 598.94	2 931 271.50
L270	-26 842.91	2 931 082.38		R270	-27 661.46	2 931 283.60
L271	-26 894.37	2 931 089.03		R271	-28 521.71	2 931 462.19
L272	-26 937.50	2 931 095.83		R272	-28 596.92	2 931 483.51
L273	-28 065.15	2 931 329.68		R273	-28 722.48	2 931 523.84
L274	-28 553.31	2 931 430.92		R274	-28 808.46	2 931 556.78
L275	-28 609.73	2 931 446.25		R275	-28 921.25	2 931 606.43
L276	-28 738.84	2 931 487.53		R276	-28 958.14	2 931 623.15
L277	-28 822.49	2 931 520.13		R277	-29 150.73	2 931 710.41
L278	-28 932.43	2 931 568.72		R278	-29 393.17	2 931 820.07
L279	-28 942.29	2 931 573.17		R279	-29 482.35	2 931 859.49
L280	-29 170.25	2 931 675.99		R280	-29 593.69	2 931 909.56
L281	-29 439.75	2 931 798.09		R281	-29 705.69	2 931 947.60
L282	-29 586.20	2 931 864.21		R282	-29 825.79	2 931 966.50
L283	-29 704.35	2 931 899.13		R283	-29 931.97	2 931 966.30
L284	-29 744.16	2 931 908.86		R284	-30 008.64	2 931 957.24
L285	-29 831.26	2 931 925.76		R285	-30 174.33	2 931 908.34
L286	-30 012.91	2 931 915.13		R286	-30 194.23	2 931 895.15
L287	-30 168.97	2 931 866.11		R287	-30 220.20	2 931 882.01
L288	-30 240.18	2 931 829.05		R288	-30 288.78	2 931 847.31
L289	-30 269.65	2 931 813.72		R289	-30 407.64	2 931 786.82
L290	-30 490.18	2 931 698.82		R290	-30 417.80	2 931 781.65
L291	-30 717.39	2 931 578.11		R291	-30 743.30	2 931 609.90
L292	-30 815.89	2 931 525.70		R292	-31 048.64	2 931 446.26
L293	-31 048.76	2 931 401.82		R293	-31 075.60	2 931 431.82
L294	-31 063.99	2 931 393.72		R294	-31 113.92	2 931 410.87
L295	-31 302.35	2 931 257.32		R295	-31 233.73	2 931 345.41
L296	-31 398.43	2 931 197.93		R296	-31 395.65	2 931 245.37
L297	-31 520.49	2 931 116.94		R297	-31 559.23	2 931 138.51
L298	-31 591.00	2 931 069.51		R298	-31 721.09	2 931 029.03
L299	-31 973.60	2 930 802.44		R299	-32 002.65	2 930 835.55
L300	-32 077.56	2 930 732.44		R300	-32 142.19	2 930 740.39
L301	-32 268.57	2 930 603.83		R301	-32 323.24	2 930 616.95
L302	-32 444.71	2 930 422.04		R302	-32 489.13	2 930 534.31
L303	-32 589.36	2 930 323.08		R303	-32 587.71	2 930 467.02
L304	-32 615.83	2 930 327.43		R304	-32 724.76	2 930 345.45
L305	-32 666.66	2 930 335.80		R305	-32 736.30	2 930 335.28
L306	-33 073.05	2 930 058.81		R306	-33 096.32	2 930 091.32

Vel  
Sheet

24

Van  
of

27

P1040/18

PADRESERWE KOÖRDINATE / ROAD RESERVE CO-ORDINATES					
LINKERKANT/LEFT HAND SIDE			REGTERKANT/RIGHT HAND SIDE		
	Y	X	WG 29°	Y	X
L307	-33 196.11	2 929 966.26		R307	-33 221.66 2 929 997.01
L308	-33 248.32	2 929 910.74		R308	-33 278.83 2 929 936.71
L309	-33 295.07	2 929 849.44		R309	-33 314.62 2 929 889.67
L310	-33 453.68	2 929 563.90		R310	-33 329.17 2 929 870.54
L311	-33 570.03	2 929 344.12		R311	-33 356.83 2 929 825.13
L312	-33 686.26	2 929 118.76		R312	-33 491.90 2 929 572.78
L313	-33 734.74	2 929 024.77		R313	-33 822.55 2 928 944.04
L314	-33 782.33	2 928 932.53		R314	-33 828.24 2 928 933.26
L315	-33 808.74	2 928 886.60		R315	-33 844.18 2 928 902.00
L316	-33 812.63	2 928 879.83		R316	-33 889.94 2 928 833.50
L317	-33 839.88	2 928 835.44		R317	-33 971.47 2 928 740.56
L318	-33 902.67	2 928 748.22		R318	-34 055.08 2 928 670.26
L319	-34 032.37	2 928 637.06		R319	-34 773.99 2 928 285.54
L320	-34 757.67	2 928 248.81		R320	-35 101.24 2 928 166.53
L321	-35 087.62	2 928 128.98		R321	-35 237.21 2 928 115.11
L322	-35 221.34	2 928 078.64		R322	-35 402.00 2 928 045.88
L323	-35 382.32	2 928 010.76		R323	-35 526.54 2 927 983.40
L324	-35 508.60	2 927 947.67		R324	-35 634.17 2 927 929.01
L325	-35 553.62	2 927 924.93		R325	-35 806.43 2 927 841.97
L326	-35 601.79	2 927 900.60		R326	-36 331.23 2 927 586.68
L327	-36 485.49	2 927 471.28		R327	-36 500.42 2 927 504.75
L328	-36 563.41	2 927 433.21		R328	-36 674.13 2 927 439.85
L329	-36 673.48	2 927 399.97		R329	-36 882.62 2 927 404.72
L330	-36 692.71	2 927 394.17		R330	-37 369.54 2 927 395.66
L331	-36 820.20	2 927 370.52		R331	-38 142.22 2 927 381.29
L332	-36 949.53	2 927 361.06		R332	-38 385.74 2 927 379.47
L333	-37 155.52	2 927 364.89		R333	-38 430.01 2 927 382.87
L334	-37 873.42	2 927 351.40		R334	-38 463.73 2 927 385.62
L335	-38 374.19	2 927 343.57		R335	-38 657.73 2 927 409.54
L336	-38 388.77	2 927 344.22		R336	-39 152.36 2 927 486.07
L337	-38 458.49	2 927 350.33		R337	-39 157.56 2 927 486.43
L338	-38 659.26	2 927 372.94		R338	-39 273.77 2 927 494.61
L339	-38 991.80	2 927 421.47		R339	-39 325.09 2 927 497.89
L340	-39 115.51	2 927 439.92		R340	-39 700.63 2 927 503.73
L341	-39 150.37	2 927 444.70		R341	-39 707.82 2 927 503.85
L342	-39 193.11	2 927 446.70		R342	-40 220.91 2 927 483.54
L343	-39 220.45	2 927 447.99		R343	-40 269.73 2 927 481.40
L344	-39 291.18	2 927 451.59		R344	-40 712.16 2 927 462.02
L345	-39 535.37	2 927 463.99		R345	-40 862.93 2 927 454.27
L346	-39 716.36	2 927 459.01		R346	-40 936.35 2 927 448.01
L347	-40 221.59	2 927 441.92		R347	-41 082.82 2 927 425.16
L348	-40 268.82	2 927 440.87		R348	-41 176.49 2 927 401.71
L349	-40 275.67	2 927 440.72		R349	-41 330.10 2 927 355.41
L350	-40 399.03	2 927 434.98		R350	-41 373.85 2 927 342.28
L351	-40 458.75	2 927 432.90		R351	-41 574.42 2 927 282.06
L352	-40 680.93	2 927 423.68		R352	-41 613.96 2 927 269.15
L353	-40 704.41	2 927 422.34		R353	-41 771.16 2 927 222.69
L354	-40 788.63	2 927 422.05		R354	-41 810.12 2 927 211.83
L355	-40 823.29	2 927 420.72		R355	-41 837.83 2 927 204.11
L356	-40 878.63	2 927 416.40		R356	-41 865.74 2 927 196.33
L357	-40 939.41	2 927 409.92		R357	-41 991.40 2 927 171.05

Vel  
Sheet 25 Van  
of 27

P1040/18



PADRESERWE KOÖRDINATE / ROAD RESERVE CO-ORDINATES							
LINKERKANT/LEFT HAND SIDE				REGTERKANT/RIGHT HAND SIDE			
	Y	X	WG 29°		Y	X	
L358	-41 011.91	2 927 400.20		R358	-42 182.97	2 927 136.78	
L359	-41 101.41	2 927 381.65		R359	-42 978.80	2 926 998.39	
L360	-41 165.34	2 927 365.57		R360	-43 547.85	2 926 900.62	
L361	-41 390.25	2 927 297.89		R361	-43 723.65	2 926 879.68	
L362	-41 644.71	2 927 218.81		R362	-43 773.82	2 926 874.79	
L363	-41 807.64	2 927 168.17		R363	-43 972.24	2 926 855.46	
L364	-41 813.94	2 927 166.66		R364	-44 250.60	2 926 832.07	
L365	-41 873.95	2 927 152.24		R365	-44 300.34	2 926 841.96	
L366	-41 893.77	2 927 147.68		R366	-44 329.36	2 926 840.49	
L367	-42 231.54	2 927 088.95		R367	-44 367.04	2 926 821.67	
L368	-42 521.54	2 927 038.53		R368	-44 428.30	2 926 815.38	
L369	-42 786.73	2 926 993.99		R369	-44 541.71	2 926 804.49	
L370	-43 097.80	2 926 939.38		R370	-44 651.03	2 926 794.39	
L371	-43 416.18	2 926 883.49		R371	-44 759.28	2 926 782.06	
L372	-43 522.34	2 926 864.35		R372	-44 836.49	2 926 776.85	
L373	-43 638.39	2 926 849.32		R373	-44 989.30	2 926 758.94	
L374	-43 776.00	2 926 836.44		R374	-45 010.44	2 926 756.15	
L375	-43 910.77	2 926 821.82		R375	-45 138.55	2 926 741.81	
L376	-43 948.87	2 926 818.90		R376	-45 228.83	2 926 731.16	
L377	-44 050.03	2 926 809.65		R377	-45 300.04	2 926 723.51	
L378	-44 090.67	2 926 807.35		R378	-45 405.62	2 926 717.48	
L379	-44 135.30	2 926 802.22		R379	-45 407.14	2 926 720.04	
L380	-44 344.43	2 926 783.03		R380	-45 467.40	2 926 713.18	
L381	-44 373.43	2 926 780.31		R381	-45 483.87	2 926 719.61	
L382	-44 555.62	2 926 763.53		R382	-45 509.26	2 926 748.97	
L383	-44 556.03	2 926 769.29		R383	-45 555.51	2 926 793.06	
L384	-44 655.16	2 926 759.60		R384	-45 588.28	2 926 807.96	
L385	-44 750.44	2 926 742.84		R385	-45 624.13	2 926 811.26	
L386	-44 885.33	2 926 726.89		R386	-45 659.07	2 926 802.59	
L387	-45 047.92	2 926 707.78		R387	-45 694.37	2 926 783.75	
L388	-45 178.48	2 926 699.35		R388	-45 705.61	2 926 786.87	
L389	-45 205.62	2 926 696.16		R389	-45 802.21	2 926 935.73	
L390	-45 381.50	2 926 676.46		R390	-45 848.01	2 926 913.96	
L391	-45 379.94	2 926 673.84		R391	-45 794.25	2 926 822.96	
L392	-45 471.89	2 926 664.88		R392	-45 684.20	2 926 674.41	
L393	-45 486.89	2 926 663.47		R393	-45 687.39	2 926 658.82	
L394	-45 526.43	2 926 655.98		R394	-45 856.36	2 926 569.46	
L395	-45 549.27	2 926 648.79		R395	-45 870.37	2 926 562.39	
L396	-45 616.36	2 926 628.15		R396	-45 924.09	2 926 542.04	
L397	-45 557.25	2 926 528.41		R397	-45 980.87	2 926 533.30	
L398	-45 537.98	2 926 495.91		R398	-46 038.22	2 926 536.54	
L399	-45 510.68	2 926 449.87		R399	-46 093.65	2 926 551.62	
L400	-45 460.89	2 926 365.92		R400	-46 144.74	2 926 577.89	
L401	-45 450.47	2 926 348.36		R401	-46 189.25	2 926 614.21	
L402	-45 477.38	2 926 332.14		R402	-46 225.25	2 926 658.97	
L403	-45 541.01	2 926 439.42		R403	-46 242.91	2 926 690.82	
L404	-45 585.42	2 926 479.52		R404	-46 373.24	2 926 967.54	
L405	-45 638.52	2 926 456.38					
L406	-45 708.14	2 926 472.35					
L407	-45 756.79	2 926 535.37					
L408	-45 783.79	2 926 535.60					

Vel Sheet	26	Van of	27	P1040/18
--------------	----	-----------	----	----------



PADRESERWE KOÖRDINATE / ROAD RESERVE CO-ORDINATES					
LINKERKANT/LEFT HAND SIDE			REGTERKANT/RIGHT HAND SIDE		
	Y	X	WG 29°	Y	X
L409	-45 812.61	2 926 527.05			
L410	-45 868.06	2 926 508.68			
L411	-45 906.10	2 926 495.13			
L412	-45 928.69	2 926 491.06			
L413	-45 967.65	2 926 484.06			
L414	-46 030.14	2 926 484.98			
L415	-46 091.30	2 926 497.85			
L416	-46 148.87	2 926 522.18			
L417	-46 200.71	2 926 557.09			
L418	-46 244.91	2 926 601.28			
L419	-46 279.84	2 926 653.11			
L420	-46 325.90	2 926 749.70			
L421	-46 358.61	2 926 783.96			
L422	-46 388.44	2 926 847.30			
L423	-46 394.06	2 926 894.46			
L424	-46 420.97	2 926 951.60			
L425	-46 423.31	2 926 987.34			

Vel Sheet	27 of	27 P1040/18
--------------	----------	----------------