

DEPARTMENT OF TRANSPORT

NO. 678

17 JUNE 2020

**THE SOUTH AFRICAN NATIONAL ROADS
AGENCY SOC LIMITED**

Registration No: 1998/009584/30

DECLARATION AMENDMENT OF NATIONAL ROAD N10 SECTION 12

AMENDMENT OF DECLARATION No. 1354 OF 2008.

By virtue of section 40(1)(b) of the South African National Roads Agency Limited and the National Roads Act, 1998 (Act No. 7 of 1998), I hereby amend Declaration No. 1354 of 2008 by substituting sheets 1 and 20 with the accompanying sheets 1A and 20A of Plan No. P673/08.

(National Road N10 Section 12: Upington – South Africa / Namibia International Border)



MINISTER OF TRANSPORT

DEPARTEMENT VAN VERVOER

NO. 678

17 JUNIE 2020

**DIE SUID-AFRIKAANSE NASIONALE
PADAGENTSKAP MSB BEPERK**

Registrasie No: 1998/009584/30

VERKLARING WYSIGING VAN NASIONALE PAD N10 SEKSIE 12

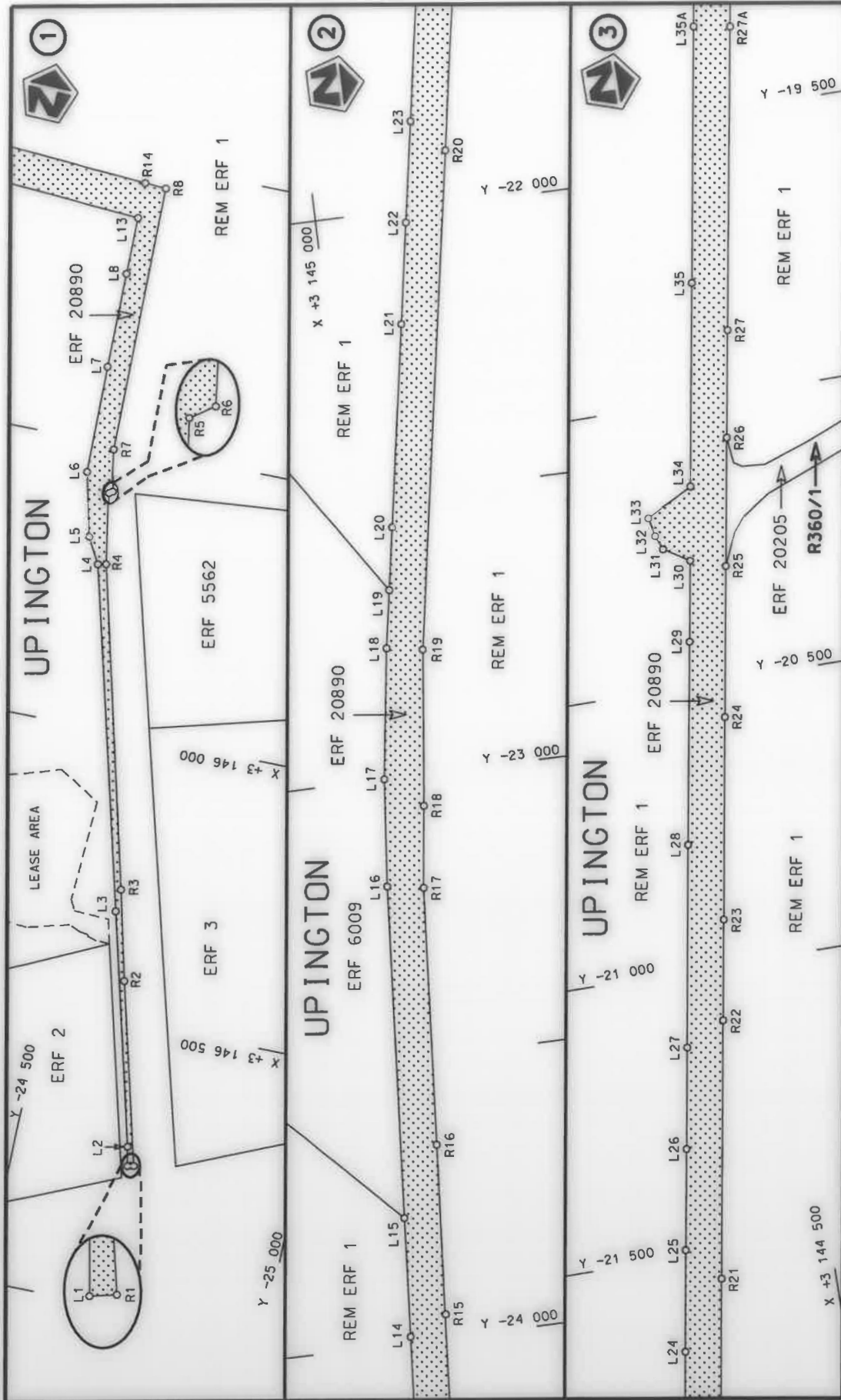
WYSIGING VAN VERKLARING No. 1354 VAN 2008.

Kragtens Artikel 40(1)(b) van die Wet op die Suid-Afrikaanse Nasionale Padagentskap Beperk en op Nasionale Paaie, 1998 (Wet No. 7 van 1998), wysig ek hiermee Verklaring No. 1354 van 2008 deur velle 1 en 20 te vervang met bygaande velle 1A en 20A van Plan No. P673/08.

(Nasionale Pad N10 Seksie 12: Upington – Suid Afrika / Namibië Internasionale Grens)



MINISTER VAN VERVOER



<p>Die Suid Afrikaanse Nasionale Padagentskop MSB Bpk The South African National Roads Agency SOC Ltd</p>	<p>Die figuur getoon The figure shown</p>	<p>stelt die podreserwe voor van 'n gedeelte represents the road reserve of a portion van Nasionale Roete N10 of National Route</p>
<p>Vel Sheet</p> <p>1A of</p> <p>27</p>	<p>12</p>	<p>Plan P673/08</p>

PADRESERWE KOÖRDINATE / ROAD RESERVE CO-ORDINATES											
LINKERKANT/LEFT HAND SIDE					REGTERKANT/RIGHT HAND SIDE						
	Y		X	WG 21°		Y		X			
L1	-24	703.52	3	146	750.00	R1	-24	714.19	3	146	747.36
L2	-24	696.59	3	146	716.16	R2	-24	630.00	3	146	428.94
L3	-24	590.07	3	146	310.39	R3	-24	591.11	3	146	271.03
L4	-24	432.35	3	145	713.05	R4	-24	446.34	3	145	710.33
L5	-24	407.09	3	145	668.03	R5	-24	423.94	3	145	585.54
L6	-24	379.94	3	145	556.07	R6	-24	429.19	3	145	581.83
L7	-24	376.39	3	145	366.83	R7	-24	417.30	3	145	508.30
L8	-24	374.47	3	145	198.77	R8	-24	410.52	3	145	037.39
L13	-24	373.60	3	145	097.85	R14	-24	373.33	3	145	034.94
L14	-23	990.08	3	145	071.13	R15	-23	956.74	3	145	005.72
L15	-23	778.98	3	145	056.70	R16	-23	657.10	3	144	984.49
L16	-23	190.08	3	145	015.84	R17	-23	200.57	3	144	952.48
L17	-23	000.20	3	144	998.25	R18	-23	055.72	3	144	934.64
L18	-22	769.58	3	144	966.25	R19	-22	779.97	3	144	903.33
L19	-22	667.46	3	144	949.32	R20	-21	904.50	3	144	758.93
L20	-22	557.18	3	144	931.02	R21	-21	549.97	3	144	700.67
L21	-22	201.15	3	144	872.14	R22	-21	096.63	3	144	625.72
L22	-22	022.99	3	144	842.83	R23	-20	919.84	3	144	596.61
L23	-21	845.30	3	144	813.34	R24	-20	564.64	3	144	538.35
L24	-21	667.67	3	144	784.18	R25	-20	299.65	3	144	494.68
L25	-21	489.27	3	144	755.25	R26	-20	074.49	3	144	457.30
L26	-21	312.07	3	144	725.58	R27	-19	886.27	3	144	426.21
L27	-21	134.00	3	144	695.88	R28	-19	297.53	3	144	328.96
L28	-20	778.05	3	144	637.77	R29	-18	958.29	3	144	273.25
L29	-20	422.04	3	144	578.61	R30	-18	390.58	3	144	179.75
L30	-20	279.92	3	144	555.04	R31	-17	938.98	3	144	105.24
L31	-20	252.05	3	144	598.90	R32	-17	487.91	3	144	030.95
L32	-20	225.93	3	144	608.81	R33	-17	038.17	3	143	956.90
L33	-20	192.60	3	144	615.52	R34	-16	587.28	3	143	882.43
L34	-20	149.88	3	144	533.96	R35	-16	156.63	3	143	811.52
L35	-19	792.93	3	144	475.10	R36	-15	684.51	3	143	733.58
L36	-19	264.45	3	144	388.25	R37	-15	182.54	3	143	651.09
L37	-18	978.37	3	144	340.91	R38	-14	736.09	3	143	577.48
L38	-18	928.03	3	144	332.73	R39	-14	467.22	3	143	532.93
L39	-18	380.35	3	144	242.53	R40	-13	927.68	3	143	444.02
L40	-17	929.26	3	144	168.25	R41	-13	658.43	3	143	400.02
L41	-17	478.10	3	144	093.73	R42	-7	516.23	3	142	387.09
L42	-17	026.54	3	144	019.58	R43	-7	469.94	3	142	379.49
L43	-16	575.73	3	143	945.06	R44	-7	111.77	3	142	320.31
L44	-16	145.97	3	143	874.30	R45	-6	661.53	3	142	246.21
L45	-15	673.28	3	143	796.35	R46	-6	209.53	3	142	171.73
L46	-15	176.27	3	143	714.44	R47	-5	303.99	3	142	022.68
L47	-14	940.53	3	143	675.74	R48	-4	857.01	3	141	948.83
L48	-14	876.36	3	143	665.12	R49	-4	434.62	3	141	878.86
L49	-14	725.36	3	143	640.01	R50	-4	430.76	3	141	878.23
L50	-14	455.42	3	143	595.54	R51	-4	053.16	3	141	815.92
L51	-13	918.37	3	143	506.99						

Vel Sheet	20A	Van of	27	P673/08
--------------	-----	-----------	----	---------