

## DEPARTMENT OF TRANSPORT

NO. 677

17 JUNE 2020

**THE SOUTH AFRICAN NATIONAL ROADS  
AGENCY SOC LIMITED**

Registration No: 1998/009584/30

**DECLARATION AMENDMENT OF NATIONAL ROAD R570 SECTION 1**

AMENDMENT OF DECLARATION No.'s 784 OF 2000 AND 249 OF 2018.

By virtue of section 40(1)(b) of the South African National Roads Agency Limited and the National Roads Act 1998 (Act No. 7 of 1998), I hereby amend **(I)** Declaration No. 784 of 2000 by substituting paragraph A of the Schedule, being the descriptive declaration of the route from its junction with the current Swaziland / South Africa National Border up to Malelane, and **(II)** Declaration No. 249 of 2018 in its entirety, by substituting it with the accompanying sheets 1 to 14 of Plan No. P1159/19.

**(National Road R570 Section 1: Swaziland / South Africa National Border – Malelane)**



MINISTER OF TRANSPORT

## DEPARTEMENT VAN VERVOER

NO. 677

17 JUNIE 2020

**DIE SUID-AFRIKAANSE NASIONALE  
PADAGENTSAP MSB BEPERK**

Registrasie No: 1998/009584/30

**VERKLARING WYSIGING VAN NASIONALE PAD R570 SEKSIE 1**

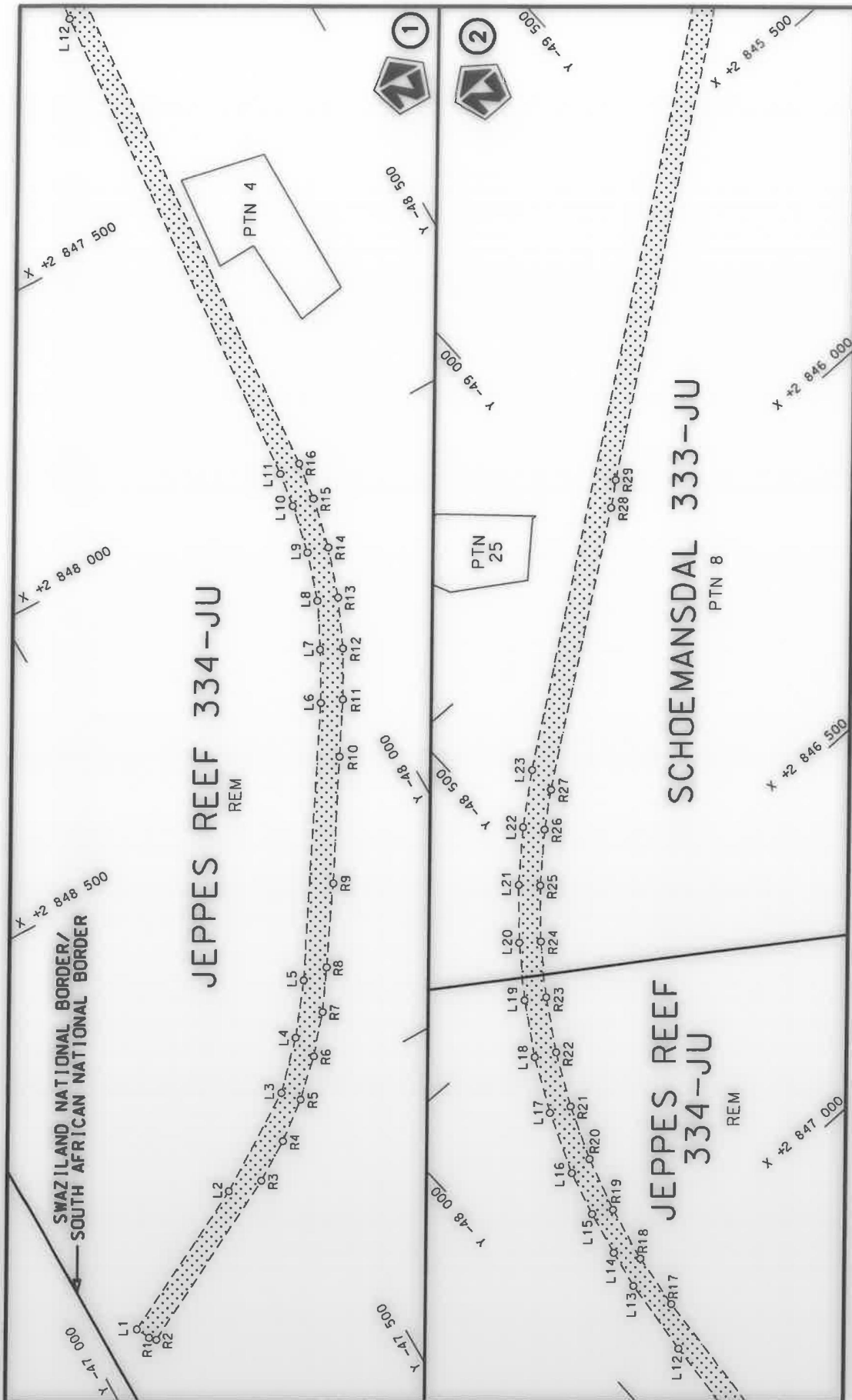
WYSIGING VAN VERKLARING No.'s 784 VAN 2000 EN 249 VAN 2018.

Kragtens Artikel 40(1)(b) van die Suid-Afrikaanse Nasionale Padagentskap Beperk en Nasionale Paaie Wet 1998 (Wet No. 7 van 1998), wysig ek hiermee **(I)** Verklaring No. 784 van 2000 deur paragraaf A van die Skedule te vervang, synde die gedeelte van die beskrywende verklaring van die pad vanaf die aansluiting met die bestaande Swaziland / Suid Afrikaanse Nasionale Grens tot by Malelane, en **(II)** Verklaring No. 249 van 2018 in sy geheel, deur dit te vervang met meegaande velle 1 tot 14 van Plan No. P1159/19.

**(Nasionale Pad R570 Seksie 1: Swaziland / Suid Afrika Nasionale Grens – Malelane)**  

---

MINISTER VAN VERVOER



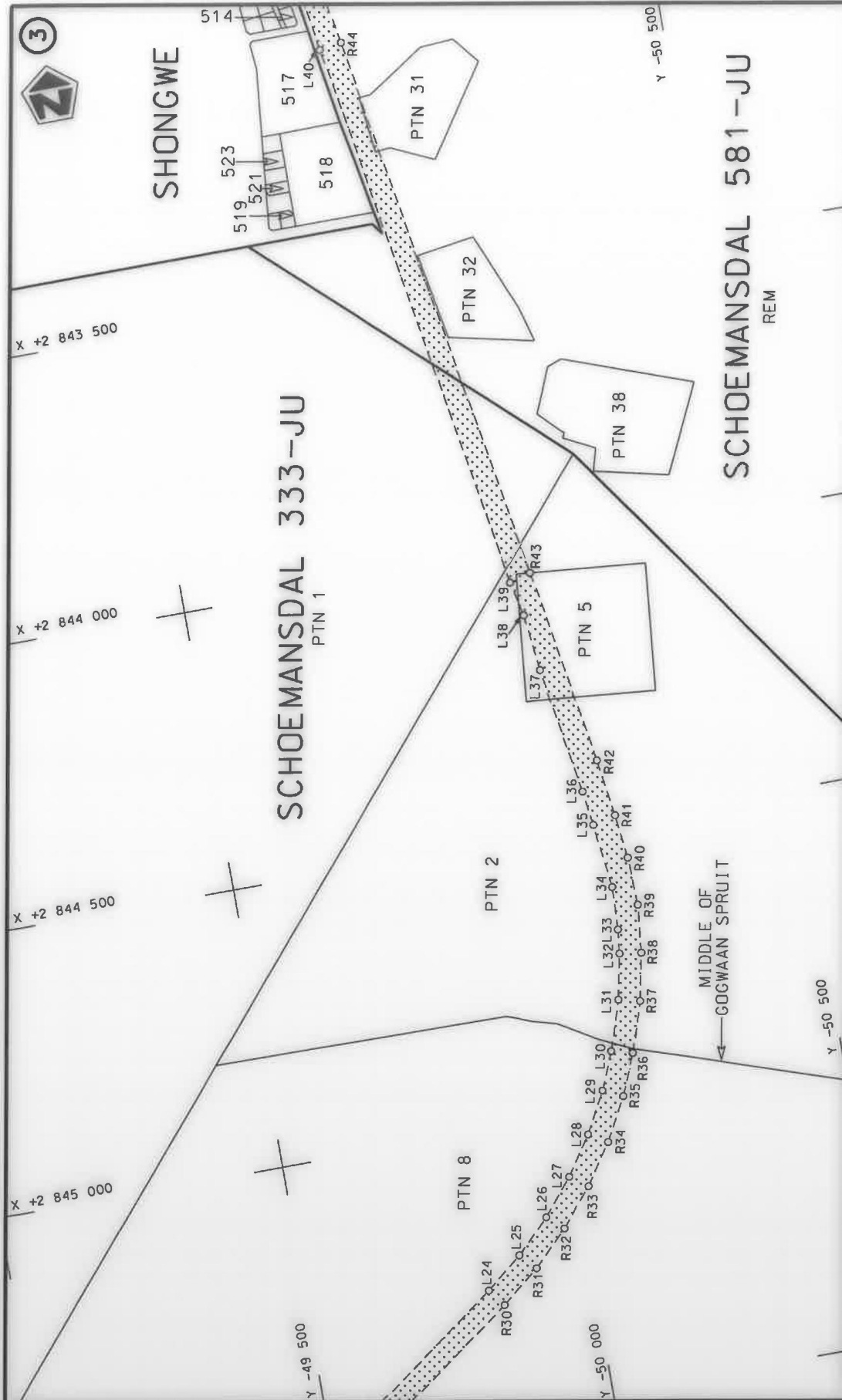
Vel  
Sheet 1 of 14  
Plan P1159/19

1  
stel die padreserwe voor van 'n gedeelte  
represents the road reserve of a portion  
van Nasionale Roete R570  
of National Route R570  
Seksie  
Section

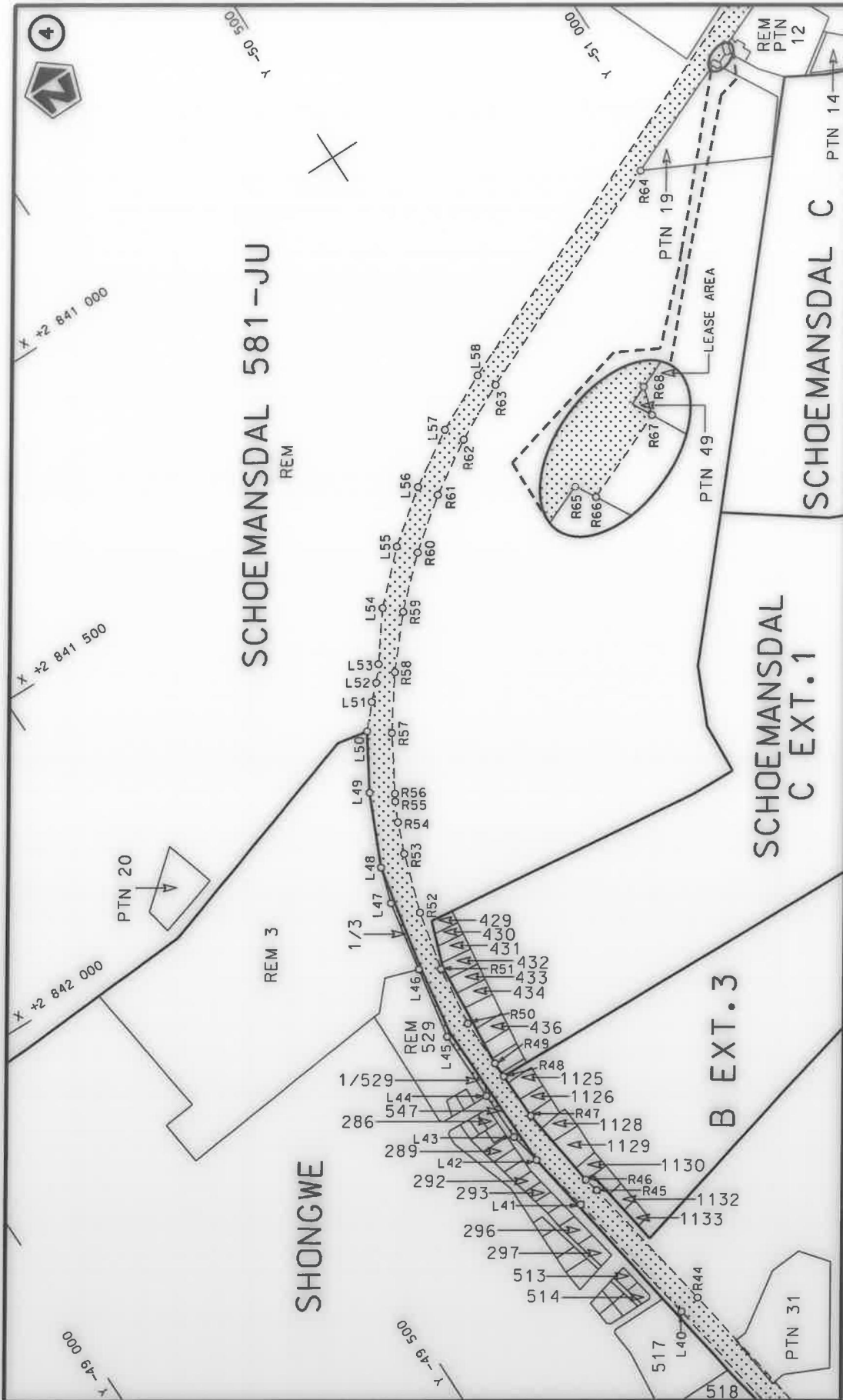


Die figuur getoon  
The figure shown

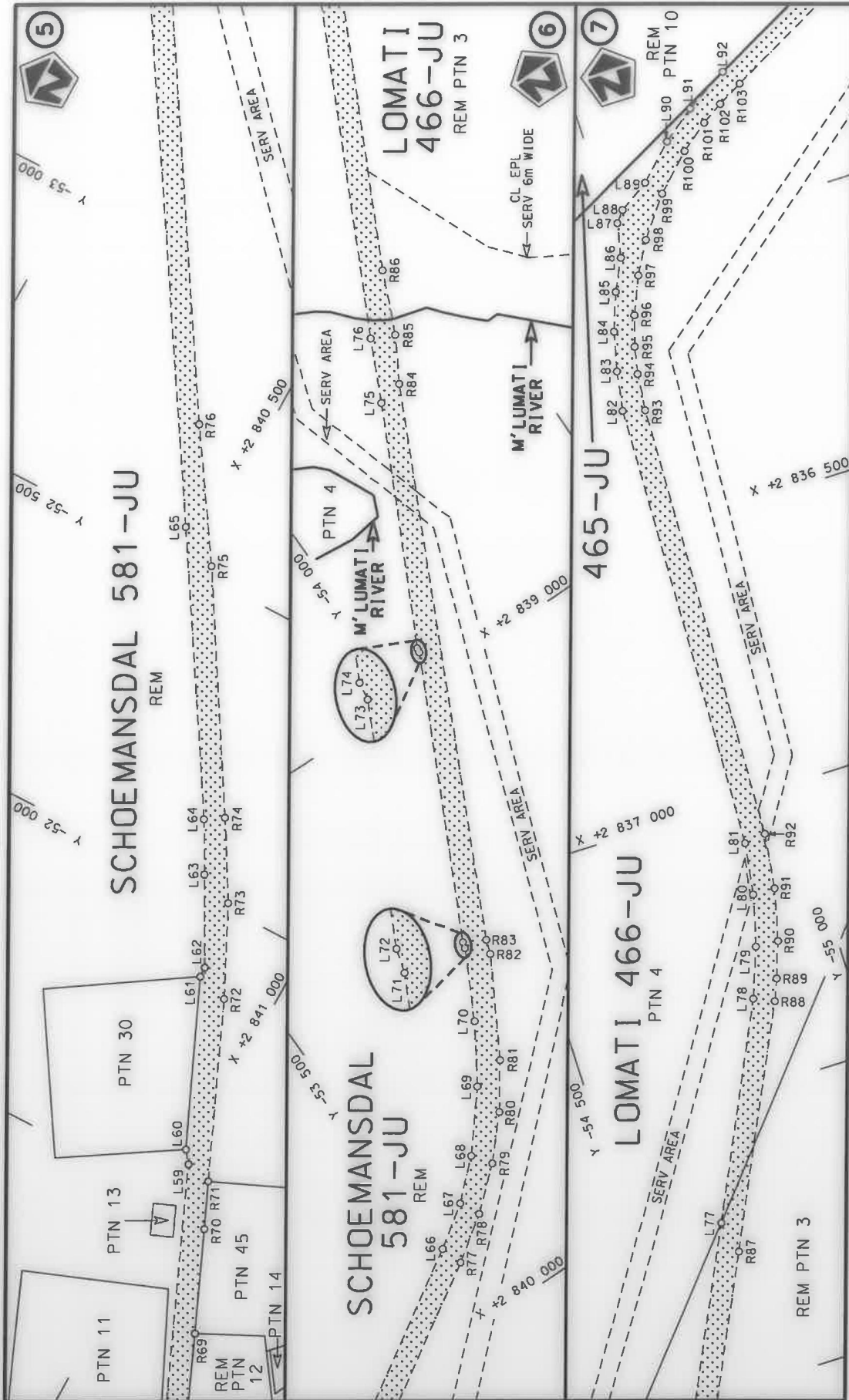
Die Suid Afrikaanse Nasionale Padagentskap MSB Bpk  
The South African National Roads Agency SOC Ltd



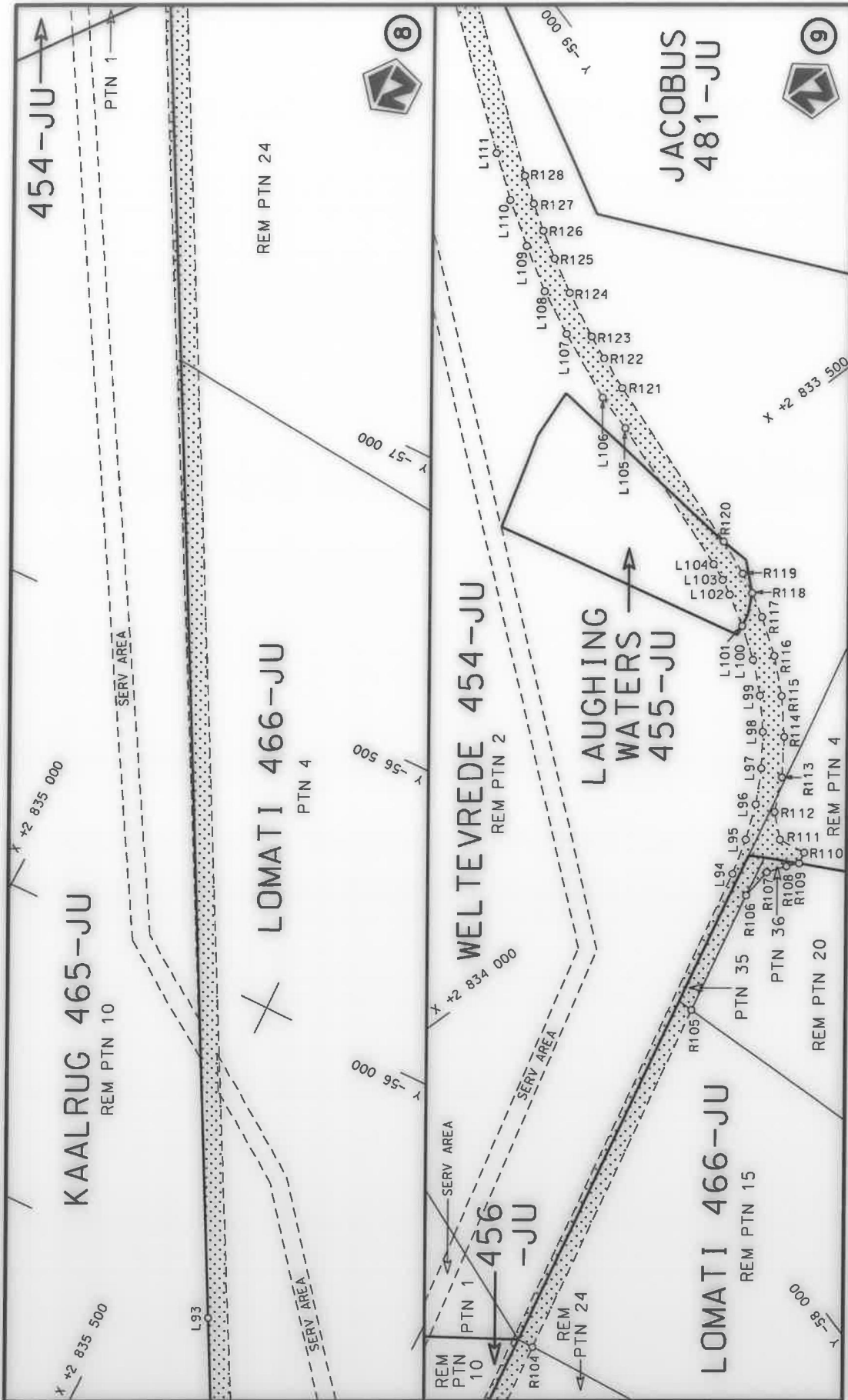
Die Suid Afrikaanse Nasionale Podagentskap MSB Bpk The South African National Roads Agency SOC Ltd	Die figuur getoon The figure shown		stel die padreserwe voor van 'n gedeelte represents the road reserve of a portion van Nasionale Roete R570 Sektie of National Route Section	
			Vel Sheet 2 of 14	Plan P1159/19



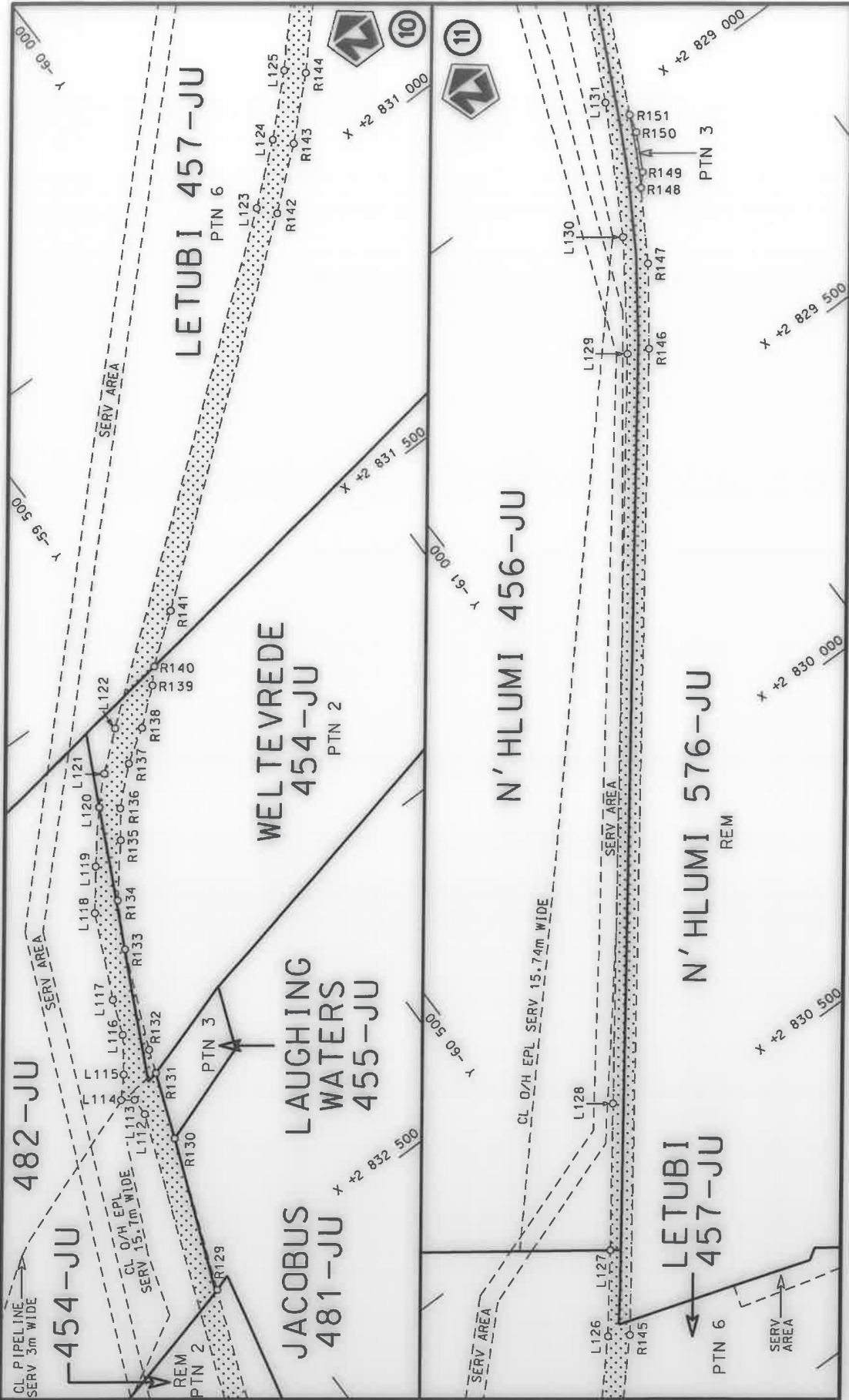
Vel Sheet 3 of 14 Plan P1159/19	stel die padreserwe voor van 'n gedeelte represents the road reserve of a portion van Nasionale Roete R570 Seksie 1 of National Route Section	Die Suid Afrikaanse Nasionale Padagentskap MSB Bpk The South African National Roads Agency SOC Ltd
	Die figuur getoon The figure shown	



<p>Die Suid Afrikaanse Nasionale Padagentskap MSB Bpk The South African National Roads Agency SOC Ltd</p>	<p>Die figuur getoon The figure shown</p>	<p>steldie padreserwe voor van 'n gedeelte represents the road reserve of a portion van Nasionale Roete R570 Sektie of National Route R570 Section</p>	<p>Vel Sheet 4 of 14 Plan P1159/19</p>
---	---	--	--

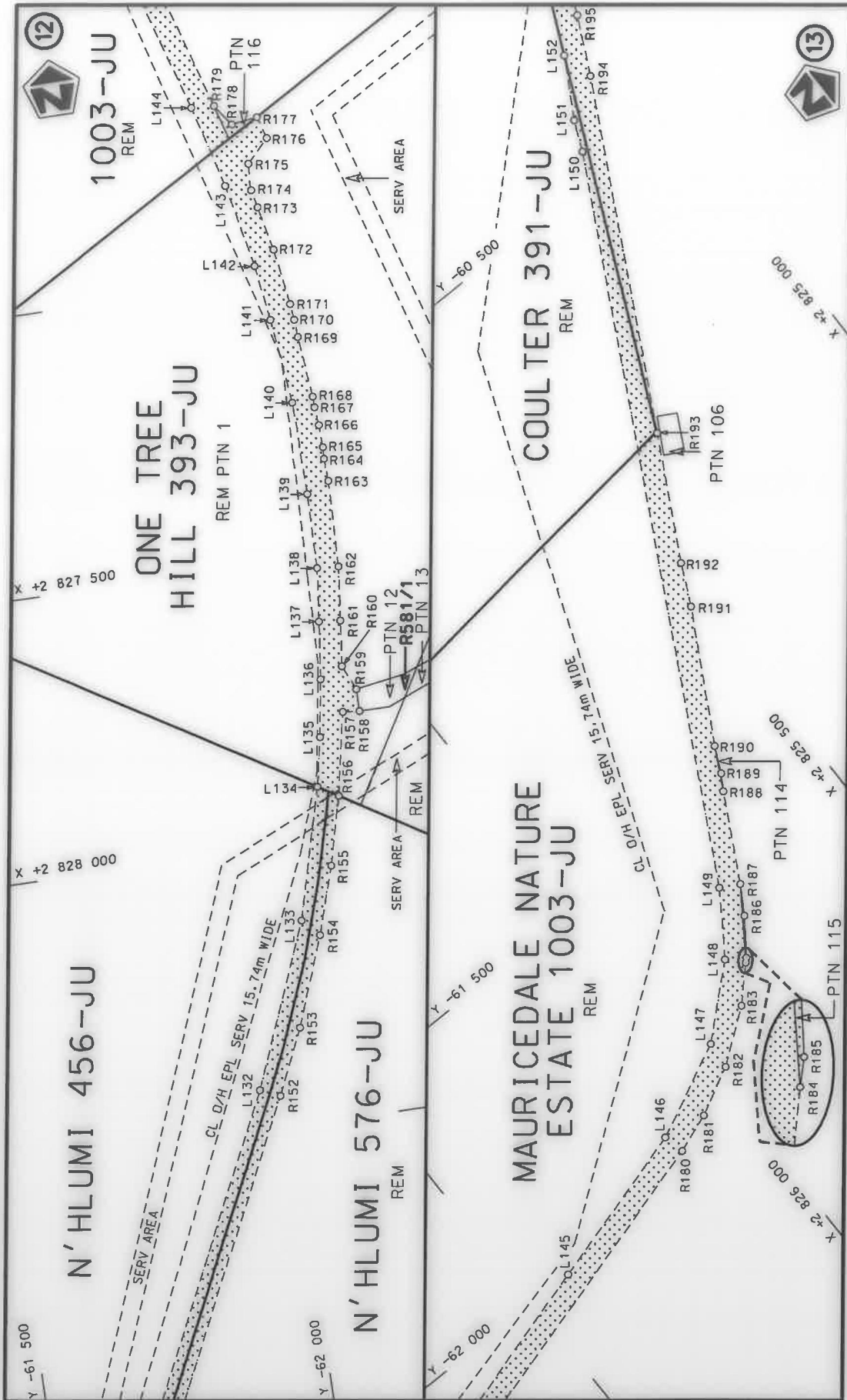


Vel Sheet 5 van of 14	steldie padreserwe voor van 'n gedeelte represents the road reserve of a portion van Nasionale Roete R570 Seksie of National Route Section 1	Die Suid Afrikaanse Nasionale Padagentskap MSB Bpk The South African National Roads Agency SOC Ltd
Plan P1159/19	Die figuur getoon The figure shown	Die figuur getoon The figure shown

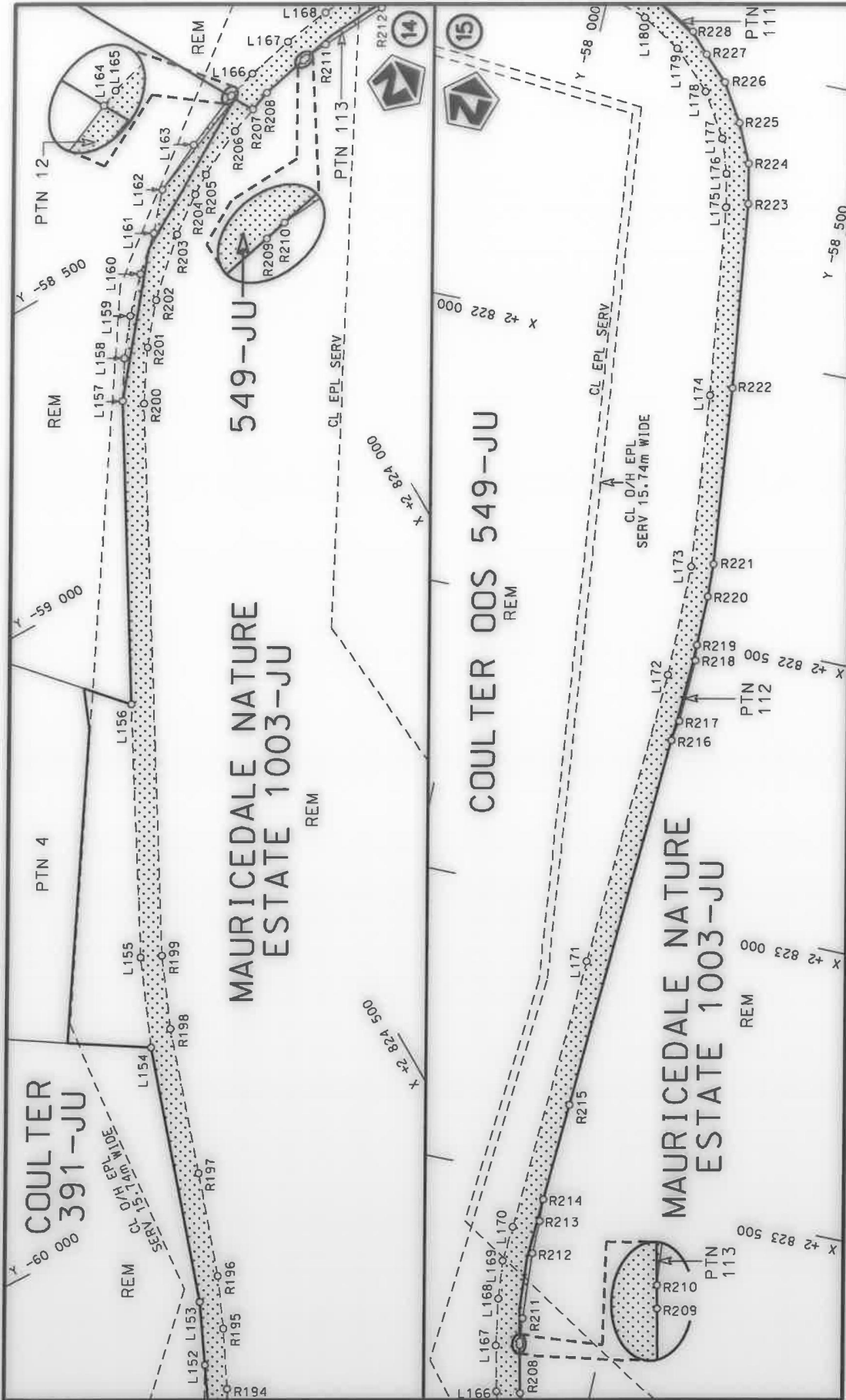


<p>Die Suid Afrikaanse Nasionale Podagentskap MSB Bpk The South African National Roads Agency SOC Ltd</p>	<p>Die figuur getoon The figure shown</p>	<p>steldie padreserwe voor van 'n gedeelte represents the road reserve of a portion van Nasionale Roete R570 of National Route R570</p>	<p>Section 1</p>	<p>Plan P1159/19</p>
		<p>Vel Sheet 6 of 14</p>		

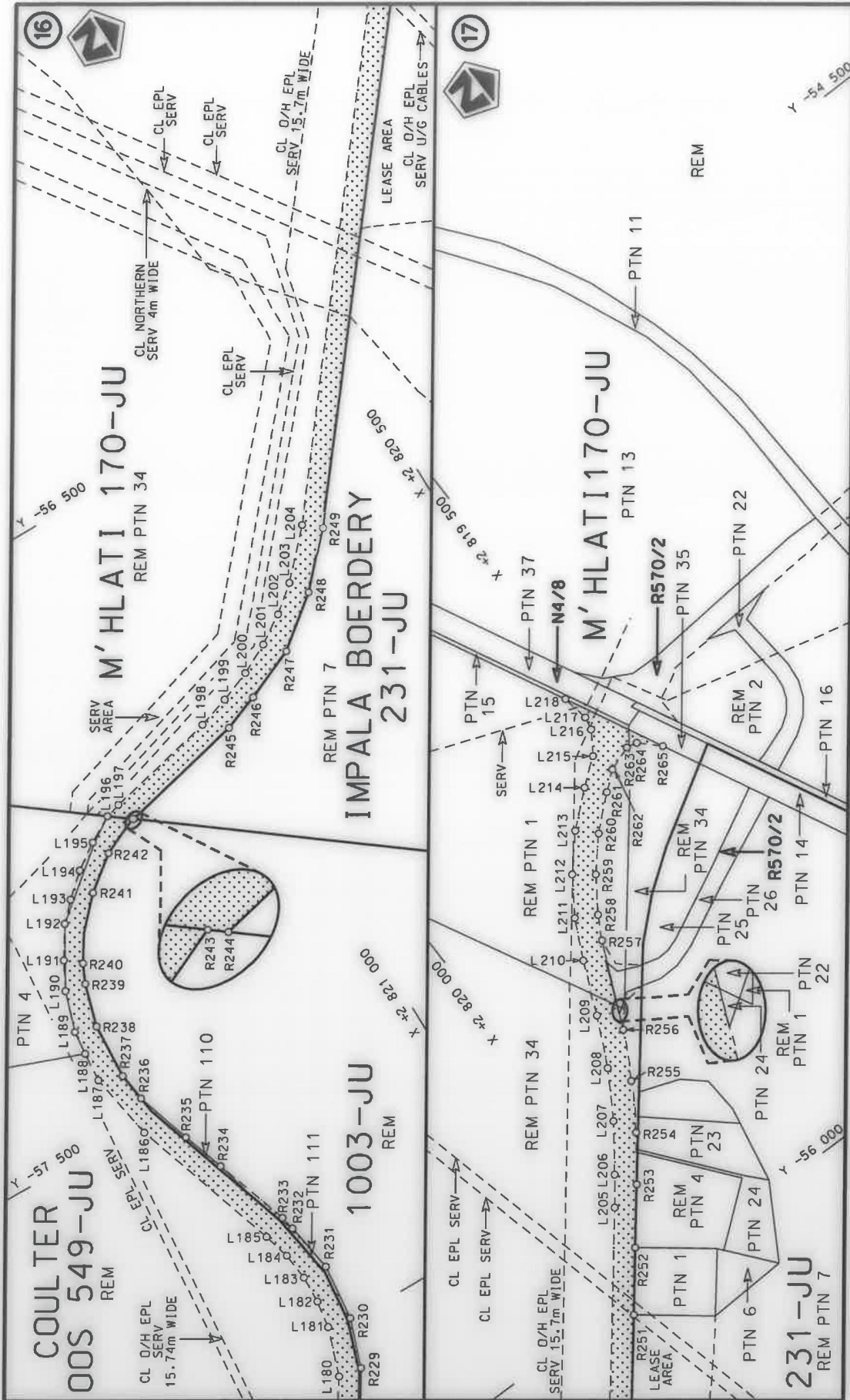




Die Suid Afrikaanse Nasionale Padagentskap MSB Bpk The South African National Roads Agency SOC Ltd	Die figuur getoon The figure shown	steldie padreserwe voor van 'n gedeelte represents the road reserve of a portion van Nasionale Roete R570 of National Route Section	Vel 7 van 14 Sheet of Plan P1159/19
---	---------------------------------------	--	---



<p>Die Suid Afrikaanse Nasionale Padagentskap MSB Bpk The South African National Roads Agency SOC Ltd</p>	<p>Die figuur getoon The figure shown</p> 	<p>steldie padreserwe voor van 'n gedeelte represents the road reserve of a portion van Nasionale Roete R570 Sektie 1 of National Route Section</p>	<p>Vel Sheet 8 of 14 Plan P1159/19</p>
---	---	---	--



<p>Die Suid Afrikaanse Nasionale Padagentskap MSB Bpk The South African National Roads Agency SOC Ltd</p>	<p>Die figuur getoon The figure shown</p>	<p>stel die podreserwe voor van 'n gedeelte represents the road reserve of a portion van Nasionale Roete R570 of National Route R570</p>	<p>Seksie 1 Section</p>
		<p>Vel Sheet 9 of 14 Plan P1159/19</p>	

PADRESERWE KOÖRDINATE / ROAD RESERVE CO-ORDINATES											
LINKERKANT/LEFT HAND SIDE					REGTERKANT/RIGHT HAND SIDE						
	Y		X	WG 31°		Y		X			
L1	-47	088.91	2	849	214.08	R1	-47	101.53	2	849	238.23
L2	-47	349.58	2	849	080.11	R2	-47	109.68	2	849	246.99
L3	-47	515.24	2	848	973.31	R3	-47	408.16	2	849	092.02
L4	-47	584.72	2	848	900.10	R4	-47	475.85	2	849	049.49
L5	-47	646.99	2	848	818.17	R5	-47	538.82	2	849	000.24
L6	-47	912.65	2	848	402.64	R6	-47	596.40	2	848	944.79
L7	-47	957.73	2	848	319.03	R7	-47	647.98	2	848	883.71
L8	-47	995.84	2	848	241.06	R8	-47	692.92	2	848	817.84
L9	-48	022.54	2	848	157.83	R9	-47	775.60	2	848	693.30
L10	-48	039.83	2	848	072.52	R10	-47	894.83	2	848	502.22
L11	-48	048.56	2	848	011.78	R11	-47	949.47	2	848	416.14
L12	-48	117.59	2	847	122.66	R12	-47	993.78	2	848	336.98
L13	-48	132.61	2	846	986.02	R13	-48	030.21	2	848	253.90
L14	-48	145.74	2	846	918.58	R14	-48	058.44	2	848	167.69
L15	-48	163.30	2	846	841.65	R15	-48	078.19	2	848	079.15
L16	-48	185.00	2	846	763.17	R16	-48	086.40	2	848	012.46
L17	-48	227.67	2	846	657.40	R17	-48	160.73	2	847	054.99
L18	-48	273.88	2	846	565.65	R18	-48	173.87	2	846	957.74
L19	-48	327.55	2	846	478.04	R19	-48	195.35	2	846	860.48
L20	-48	388.30	2	846	395.19	R20	-48	224.82	2	846	765.34
L21	-48	455.71	2	846	317.67	R21	-48	262.09	2	846	672.98
L22	-48	529.33	2	846	246.01	R22	-48	306.89	2	846	584.03
L23	-48	608.65	2	846	180.70	R23	-48	358.91	2	846	499.10
L24	-49	816.48	2	845	280.59	R24	-48	417.81	2	846	418.78
L25	-49	879.56	2	845	228.51	R25	-48	483.17	2	846	343.62
L26	-49	937.26	2	845	170.53	R26	-48	554.53	2	846	274.15
L27	-49	989.04	2	845	107.20	R27	-48	609.71	2	846	228.72
L28	-50	034.39	2	845	039.13	R28	-49	019.82	2	845	924.02
L29	-50	072.90	2	844	966.95	R29	-49	058.63	2	845	892.48
L30	-50	100.95	2	844	902.01	R30	-49	839.07	2	845	310.87
L31	-50	127.95	2	844	813.10	R31	-49	905.01	2	845	256.44
L32	-50	143.97	2	844	732.89	R32	-49	965.31	2	845	195.84
L33	-50	148.46	2	844	690.36	R33	-50	019.42	2	845	129.66
L34	-50	151.64	2	844	614.44	R34	-50	066.82	2	845	058.51
L35	-50	137.92	2	844	499.91	R35	-50	107.06	2	844	983.09
L36	-50	129.57	2	844	438.35	R36	-50	137.36	2	844	911.97
L37	-50	093.38	2	844	212.60	R37	-50	164.59	2	844	822.30
L38	-50	083.39	2	844	112.58	R38	-50	181.34	2	844	738.47
L39	-50	070.03	2	844	051.25	R39	-50	189.83	2	844	653.41
L40	-49	905.40	2	843	061.26	R40	-50	187.38	2	844	568.04
L41	-49	860.27	2	842	804.26	R41	-50	178.37	2	844	489.92
L42	-49	838.74	2	842	695.68	R42	-50	163.88	2	844	388.29
L43	-49	827.66	2	842	639.57	R43	-50	106.79	2	844	040.37
L44	-49	826.65	2	842	551.51	R44	-49	942.64	2	843	054.90
L45	-49	825.21	2	842	424.82	R45	-49	897.54	2	842	798.08
L46	-49	848.25	2	842	296.83	R46	-49	891.54	2	842	772.05
L47	-49	870.85	2	842	171.27	R47	-49	872.58	2	842	624.17
L48	-49	890.62	2	842	108.36	R48	-49	870.90	2	842	538.95
L49	-49	945.80	2	841	985.57	R49	-49	870.34	2	842	511.03
L50	-50	000.98	2	841	891.53	R50	-49	868.40	2	842	425.08
L51	-50	035.86	2	841	850.86	R51	-49	880.93	2	842	317.62

Vel	10	Van	14	P1159/19
Sheet		of		

PADRESERWE KOÖRDINATE / ROAD RESERVE CO-ORDINATES						
LINKERKANT/LEFT HAND SIDE				REGTERKANT/RIGHT HAND SIDE		
	Y	X	WG 31°		Y	X
L52	-50 060.93	2 841	826.67	R52	-49 904.22	2 842 211.96
L53	-50 082.04	2 841	800.91	R53	-49 938.03	2 842 109.20
L54	-50 141.77	2 841	720.89	R54	-49 958.88	2 842 056.06
L55	-50 221.61	2 841	642.79	R55	-49 974.81	2 842 022.34
L56	-50 309.65	2 841	573.78	R56	-49 981.99	2 842 010.39
L57	-50 404.32	2 841	514.17	R57	-50 035.64	2 841 916.56
L58	-50 504.58	2 841	464.59	R58	-50 098.42	2 841 828.65
L59	-51 575.12	2 841	000.15	R59	-50 168.52	2 841 746.48
L60	-51 589.26	2 840	986.48	R60	-50 246.26	2 841 671.42
L61	-51 870.45	2 840	861.31	R61	-50 331.36	2 841 604.70
L62	-51 888.32	2 840	860.41	R62	-50 422.87	2 841 547.08
L63	-52 033.84	2 840	780.43	R63	-50 522.10	2 841 496.04
L64	-52 119.63	2 840	732.74	R64	-50 939.57	2 841 315.46
L65	-52 559.19	2 840	455.71	R65	-51 150.18	2 841 225.45
L66	-53 508.33	2 839	849.60	R66	-51 153.53	2 841 231.49
L67	-53 578.56	2 839	799.43	R67	-51 180.36	2 841 220.02
L68	-53 641.93	2 839	740.90	R68	-51 182.83	2 841 211.66
L69	-53 719.35	2 839	644.75	R69	-51 310.08	2 841 156.97
L70	-53 780.12	2 839	545.56	R70	-51 480.45	2 841 082.46
L71	-53 838.24	2 839	428.48	R71	-51 558.25	2 841 048.12
L72	-53 841.29	2 839	417.64	R72	-51 856.89	2 840 917.72
L73	-54 065.71	2 838	948.15	R73	-52 009.56	2 840 842.35
L74	-54 066.82	2 838	940.02	R74	-52 139.78	2 840 764.71
L75	-54 257.82	2 838	543.64	R75	-52 519.85	2 840 529.19
L76	-54 306.41	2 838	438.31	R76	-52 730.14	2 840 388.68
L77	-54 656.02	2 837	707.78	R77	-53 520.47	2 839 887.35
L78	-54 828.92	2 837	343.71	R78	-53 595.69	2 839 834.09
L79	-54 860.86	2 837	256.84	R79	-53 664.50	2 839 772.85
L80	-54 883.76	2 837	167.16	R80	-53 725.56	2 839 703.88
L81	-54 897.36	2 837	075.60	R81	-53 778.00	2 839 628.14
L82	-54 922.17	2 836	278.20	R82	-53 869.12	2 839 462.14
L83	-54 933.38	2 836	208.32	R83	-53 877.30	2 839 437.30
L84	-54 949.56	2 836	139.65	R84	-54 302.05	2 838 532.91
L85	-54 973.35	2 836	073.23	R85	-54 344.95	2 838 456.76
L86	-54 999.97	2 836	017.99	R86	-54 390.74	2 838 349.63
L87	-55 012.25	2 835	957.67	R87	-54 670.84	2 837 764.33
L88	-55 027.88	2 835	938.08	R88	-54 863.36	2 837 359.25
L89	-55 079.42	2 835	904.08	R89	-54 878.45	2 837 321.69
L90	-55 137.25	2 835	846.24	R90	-54 900.49	2 837 258.97
L91	-55 192.81	2 835	802.76	R91	-54 922.56	2 837 167.81
L92	-55 265.99	2 835	757.77	R92	-54 935.36	2 837 070.48
L93	-55 460.90	2 835	653.36	R93	-54 959.64	2 836 289.08
L94	-58 333.50	2 834	100.22	R94	-54 966.24	2 836 223.88
L95	-58 388.21	2 834	065.40	R95	-54 975.81	2 836 175.88
L96	-58 439.08	2 834	025.36	R96	-54 992.02	2 836 122.58
L97	-58 485.05	2 833	979.78	R97	-55 019.37	2 836 057.17
L98	-58 525.53	2 833	929.25	R98	-55 050.51	2 836 001.10
L99	-58 559.97	2 833	874.44	R99	-55 102.08	2 835 931.60
L100	-58 587.94	2 833	816.05	R100	-55 161.35	2 835 871.55
L101	-58 608.39	2 833	756.84	R101	-55 208.85	2 835 834.12
L102	-58 624.28	2 833	698.61	R102	-55 245.19	2 835 810.48

Vel  
Sheet

11

Van  
of

14

P1159/19

PADRESERWE KOÖRDINATE / ROAD RESERVE CO-ORDINATES											
LINKERKANT/LEFT HAND SIDE					REGTERKANT/RIGHT HAND SIDE						
	Y		X	WG 31°		Y		X			
L103	-58	630.30	2	833	670.15	R103	-55	288.14	2	835	786.44
L104	-58	634.13	2	833	638.33	R104	-57	551.48	2	834	565.01
L105	-58	652.90	2	833	350.73	R105	-58	131.40	2	834	252.20
L106	-58	653.36	2	833	283.10	R106	-58	329.18	2	834	145.98
L107	-58	670.21	2	833	153.70	R107	-58	382.28	2	834	134.44
L108	-58	684.84	2	833	069.98	R108	-58	416.33	2	834	146.97
L109	-58	707.32	2	832	986.19	R109	-58	437.21	2	834	155.90
L110	-58	733.10	2	832	903.41	R110	-58	455.49	2	834	145.84
L111	-58	763.44	2	832	822.18	R111	-58	435.81	2	834	101.13
L112	-59	015.83	2	832	168.81	R112	-58	456.89	2	834	056.77
L113	-59	017.17	2	832	137.94	R113	-58	504.06	2	834	014.91
L114	-58	997.91	2	832	123.79	R114	-58	550.56	2	833	959.10
L115	-59	028.64	2	832	090.18	R115	-58	590.02	2	833	898.12
L116	-59	068.96	2	832	032.46	R116	-58	621.89	2	833	832.84
L117	-59	092.02	2	831	972.06	R117	-58	645.69	2	833	764.21
L118	-59	159.62	2	831	829.83	R118	-58	656.81	2	833	720.15
L119	-59	209.97	2	831	764.11	R119	-58	664.41	2	833	682.71
L120	-59	276.53	2	831	683.62	R120	-58	671.60	2	833	616.85
L121	-59	318.94	2	831	640.71	R121	-58	691.31	2	833	289.91
L122	-59	381.20	2	831	586.75	R122	-58	697.12	2	833	228.45
L123	-60	127.73	2	830	992.08	R123	-58	702.80	2	833	184.20
L124	-60	222.42	2	830	911.41	R124	-58	717.83	2	833	098.36
L125	-60	311.57	2	830	824.65	R125	-58	733.06	2	833	033.67
L126	-60	394.79	2	830	732.18	R126	-58	746.71	2	832	982.14
L127	-60	488.42	2	830	612.65	R127	-58	761.90	2	832	933.58
L128	-60	647.90	2	830	404.94	R128	-58	778.79	2	832	884.04
L129	-61	459.23	2	829	348.97	R129	-58	930.52	2	832	496.89
L130	-61	575.99	2	829	177.58	R130	-59	030.75	2	832	235.35
L131	-61	692.98	2	828	967.24	R131	-59	074.02	2	832	122.44
L132	-61	950.18	2	828	425.65	R132	-59	089.81	2	832	081.24
L133	-62	065.31	2	828	138.20	R133	-59	161.86	2	831	913.32
L134	-62	126.39	2	827	908.03	R134	-59	203.10	2	831	835.69
L135	-62	144.18	2	827	820.68	R135	-59	271.82	2	831	752.29
L136	-62	159.43	2	827	719.28	R136	-59	304.73	2	831	706.15
L137	-62	171.16	2	827	617.34	R137	-59	364.17	2	831	651.37
L138	-62	181.35	2	827	522.72	R138	-59	419.70	2	831	614.24
L139	-62	183.02	2	827	389.95	R139	-59	479.14	2	831	564.23
L140	-62	179.62	2	827	225.31	R140	-59	501.16	2	831	539.37
L141	-62	162.72	2	827	074.15	R141	-59	582.80	2	831	476.45
L142	-62	148.47	2	826	975.49	R142	-60	151.27	2	831	021.63
L143	-62	118.33	2	826	826.98	R143	-60	247.86	2	830	939.34
L144	-62	078.56	2	826	680.83	R144	-60	338.80	2	830	850.83
L145	-61	998.56	2	826	417.94	R145	-60	426.70	2	830	753.17
L146	-61	913.91	2	826	134.68	R146	-61	494.65	2	829	364.11
L147	-61	833.31	2	825	969.41	R147	-61	582.93	2	829	241.40
L148	-61	731.24	2	825	857.15	R148	-61	652.60	2	829	126.37
L149	-61	624.74	2	825	786.01	R149	-61	671.61	2	829	105.57
L150	-60	448.69	2	825	163.40	R150	-61	704.68	2	829	041.91
L151	-60	395.84	2	825	140.42	R151	-61	713.63	2	829	010.19
L152	-60	294.78	2	825	082.46	R152	-61	984.34	2	828	440.97
L153	-60	192.42	2	825	035.40	R153	-62	035.54	2	828	326.27

Vel Sheet	12	Van of	14	P1159/19
--------------	----	-----------	----	----------

PADRESERWE KOÖRDINATE / ROAD RESERVE CO-ORDINATES							
LINKERKANT/LEFT HAND SIDE				REGTERKANT/RIGHT HAND SIDE			
	Y	X	WG 31°		Y	X	
L154	-59 755.50	2 824	887.61	R154	-62 094.00	2 828	168.81
L155	-59 605.98	2 824	824.17	R155	-62 130.99	2 828	049.64
L156	-59 206.76	2 824	618.22	R156	-62 161.52	2 827	929.80
L157	-58 729.63	2 824	367.17	R157	-62 189.69	2 827	782.40
L158	-58 664.91	2 824	327.46	R158	-62 218.39	2 827	785.99
L159	-58 604.43	2 824	281.48	R159	-62 218.19	2 827	746.58
L160	-58 548.32	2 824	230.28	R160	-62 199.84	2 827	701.83
L161	-58 497.02	2 824	174.26	R161	-62 208.75	2 827	621.12
L162	-58 437.41	2 824	123.52	R162	-62 219.02	2 827	525.72
L163	-58 395.23	2 824	036.71	R163	-62 222.83	2 827	372.40
L164	-58 352.95	2 823	937.94	R164	-62 220.72	2 827	332.28
L165	-58 351.92	2 823	935.39	R165	-62 221.97	2 827	311.44
L166	-58 337.25	2 823	885.43	R166	-62 220.56	2 827	271.86
L167	-58 318.67	2 823	803.83	R167	-62 217.25	2 827	239.26
L168	-58 305.45	2 823	721.63	R168	-62 217.03	2 827	220.04
L169	-58 298.49	2 823	654.26	R169	-62 205.88	2 827	111.47
L170	-58 303.18	2 823	591.94	R170	-62 203.78	2 827	080.18
L171	-58 330.26	2 823	104.43	R171	-62 200.70	2 827	051.28
L172	-58 360.05	2 822	578.65	R172	-62 185.85	2 826	951.59
L173	-58 358.86	2 822	382.65	R173	-62 168.41	2 826	872.91
L174	-58 326.36	2 822	078.91	R174	-62 161.52	2 826	840.95
L175	-58 282.23	2 821	747.27	R175	-62 163.53	2 826	793.94
L176	-58 270.02	2 821	688.82	R176	-62 201.84	2 826	753.65
L177	-58 249.75	2 821	629.38	R177	-62 189.37	2 826	714.68
L178	-58 203.52	2 821	554.24	R178	-62 144.65	2 826	720.90
L179	-58 138.55	2 821	489.79	R179	-62 118.38	2 826	683.93
L180	-58 071.32	2 821	447.87	R180	-61 950.86	2 826	126.98
L181	-57 986.33	2 821	418.57	R181	-61 925.50	2 826	057.59
L182	-57 937.69	2 821	411.01	R182	-61 881.26	2 825	974.62
L183	-57 888.48	2 821	409.89	R183	-61 813.83	2 825	885.14
L184	-57 839.55	2 821	415.23	R184	-61 758.48	2 825	831.80
L185	-57 792.25	2 821	428.55	R185	-61 752.16	2 825	825.44
L186	-57 521.26	2 821	515.64	R186	-61 691.43	2 825	781.92
L187	-57 399.52	2 821	535.87	R187	-61 642.70	2 825	752.82
L188	-57 347.97	2 821	530.61	R188	-61 494.61	2 825	674.42
L189	-57 305.65	2 821	526.21	R189	-61 467.28	2 825	657.22
L190	-57 234.67	2 821	502.90	R190	-61 422.08	2 825	636.02
L191	-57 186.43	2 821	477.30	R191	-61 201.61	2 825	515.01
L192	-57 131.74	2 821	442.29	R192	-61 129.67	2 825	481.26
L193	-57 100.12	2 821	411.50	R193	-60 922.94	2 825	370.85
L194	-57 064.08	2 821	370.77	R194	-60 351.40	2 825	069.32
L195	-57 033.62	2 821	325.72	R195	-60 252.97	2 825	021.23
L196	-57 007.19	2 821	279.77	R196	-60 166.79	2 824	983.70
L197	-56 999.23	2 821	253.57	R197	-59 990.58	2 824	923.88
L198	-56 954.56	2 821	055.46	R198	-59 742.55	2 824	840.93
L199	-56 937.03	2 820	998.75	R199	-59 622.08	2 824	789.96
L200	-56 915.46	2 820	943.56	R200	-58 752.21	2 824	337.16
L201	-56 888.48	2 820	890.80	R201	-58 668.39	2 824	282.94
L202	-56 856.30	2 820	841.04	R202	-58 602.86	2 824	228.58
L203	-56 819.52	2 820	795.30	R203	-58 519.48	2 824	139.98
L204	-56 742.53	2 820	723.01	R204	-58 473.83	2 824	077.43

Vel  
Sheet13 Van  
of 14

P1159/19

PADRESERWE KOÖRDINATE / ROAD RESERVE CO-ORDINATES						
LINKERKANT/LEFT HAND SIDE				REGTERKANT/RIGHT HAND SIDE		
	Y	X	WG 31°		Y	X
L205	-55 855.17	2 820	024.96	R205	-58 452.76	2 824 043.55
L206	-55 808.31	2 819	989.94	R206	-58 410.97	2 823 961.49
L207	-55 731.05	2 819	934.48	R207	-58 392.58	2 823 915.45
L208	-55 649.58	2 819	886.08	R208	-58 378.60	2 823 879.91
L209	-55 563.36	2 819	845.04	R209	-58 360.22	2 823 796.66
L210	-55 470.94	2 819	805.65	R210	-58 358.67	2 823 789.89
L211	-55 401.23	2 819	772.35	R211	-58 355.01	2 823 748.81
L212	-55 336.71	2 819	729.34	R212	-58 347.46	2 823 632.34
L213	-55 277.85	2 819	678.51	R213	-58 347.88	2 823 573.91
L214	-55 226.77	2 819	619.65	R214	-58 345.69	2 823 534.77
L215	-55 190.71	2 819	574.44	R215	-58 354.84	2 823 361.35
L216	-55 150.88	2 819	548.80	R216	-58 391.12	2 822 691.87
L217	-55 127.67	2 819	544.03	R217	-58 397.19	2 822 655.53
L218	-55 081.58	2 819	551.13	R218	-58 401.90	2 822 544.82
REGTERKANT/RIGHT HAND SIDE				R219	-58 398.41	2 822 517.37
R256	-55 613.26	2 819	822.95	R220	-58 398.76	2 822 429.21
R257	-55 463.68	2 819	757.23	R221	-58 396.20	2 822 370.63
R258	-55 421.62	2 819	736.30	R222	-58 361.80	2 822 058.34
R259	-55 361.84	2 819	696.44	R223	-58 319.02	2 821 732.87
R260	-55 306.88	2 819	648.87	R224	-58 304.38	2 821 662.91
R261	-55 256.73	2 819	593.40	R225	-58 273.17	2 821 595.66
R262	-55 231.59	2 819	560.73	R226	-58 232.63	2 821 530.56
R263	-55 215.81	2 819	517.05	R227	-58 190.99	2 821 488.77
R264	-55 219.87	2 819	498.22	R228	-58 158.72	2 821 454.49
R265	-55 252.34	2 819	465.08	R229	-58 080.15	2 821 406.65
				R230	-57 994.43	2 821 377.07
				R231	-57 893.62	2 821 365.96
				R232	-57 804.85	2 821 380.88
				R233	-57 779.46	2 821 386.35
				R234	-57 643.83	2 821 431.60
				R235	-57 567.83	2 821 457.49
				R236	-57 467.28	2 821 488.52
				R237	-57 416.66	2 821 495.04
				R238	-57 317.12	2 821 488.71
				R239	-57 241.86	2 821 466.38
				R240	-57 208.71	2 821 451.28
				R241	-57 163.52	2 821 421.90
				R242	-57 110.49	2 821 371.40
				R243	-57 064.57	2 821 312.02
				R244	-57 034.37	2 821 244.85
				R245	-57 035.63	2 821 243.23
				R246	-56 984.75	2 821 017.56
				R247	-56 960.42	2 820 953.43
				R248	-56 920.82	2 820 861.29
				R249	-56 851.63	2 820 774.12
				R250	-56 766.61	2 820 693.92
				R251	-56 029.27	2 820 112.10
				R252	-55 935.20	2 820 038.41
				R253	-55 847.12	2 819 968.91
				R254	-55 772.76	2 819 914.55
				R255	-55 694.39	2 819 866.16

Vel  
Sheet

14

Van  
of

14

P1159/19