

---

GOVERNMENT NOTICES • GOEWERMENTSKENNISGEWINGS

---

DEPARTMENT OF TRANSPORT

NO. 585

15 APRIL 2019

**THE SOUTH AFRICAN NATIONAL ROADS  
AGENCY SOC LIMITED**

Registration No: 1998/009584/30

---

**DECLARATION AMENDMENT OF NATIONAL ROAD N1 SECTION 16X**

AMENDMENT OF DECLARATION No.'s 177 OF 2009 AND 1086 OF 2007.

By virtue of Section 40 (1)(b) of The South African National Roads Agency Limited and National Roads Act, 1998 (Act No. 7 of 1998), I hereby amend **(I)** Declaration No. 177 of 2009 in its entirety, **(II)** Declaration No. 1086 of 2007 from its start up to points L173 and R168 on sheet 4 of Plan No. P602/06, by substituting all sheets of their respective Plans with the accompanying sheets 1 to 18 of Plan No. P1052/18.

**(National Road N1 Section 16X: Winburg – Ventersburg)**



---

MINISTER OF TRANSPORT

## DEPARTEMENT VAN VERVOER

NO. 585

15 APRIL 2019

**DIE SUID-AFRIKAANSE NASIONALE  
PADAGENTSKAP MSB BEPERK**

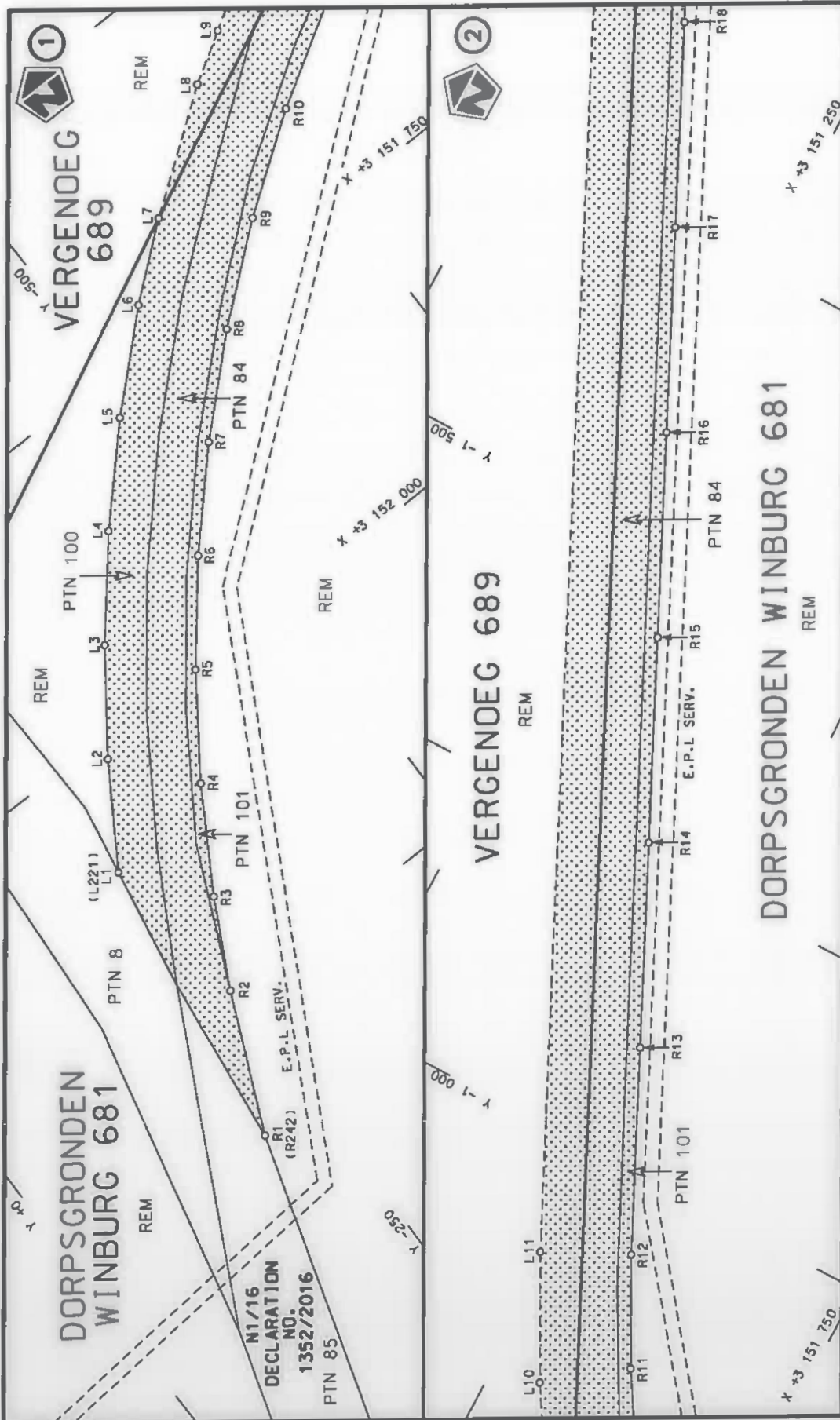
Registrasie No: 1998/009584/30

**VERKLARING WYSIGING VAN NASIONALE PAD N1 SEKSIE 16X**

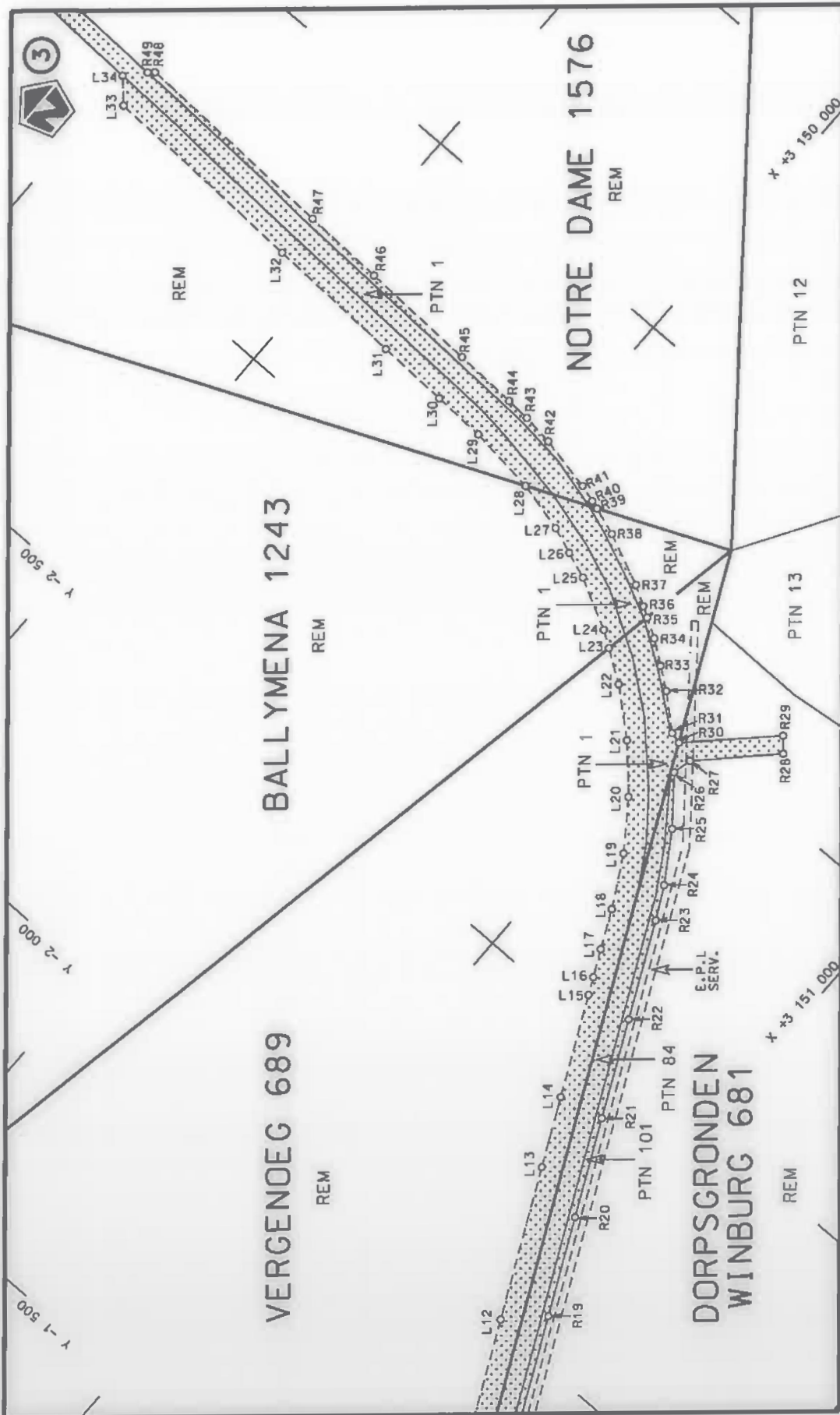
WYSIGING VAN VERKLARING No.'s 177 VAN 2009 EN 1086 VAN 2007.

Kragtens Artikel 40(1)(b) van die Wet op die Suid-Afrikaanse Nasionale Padagentskap Beperk en op Nasionale Paaie, 1998 (Wet No. 7 van 1998), wysig ek hiermee (I) Verklaring No. 177 van 2009 deur dit in sy geheel, (II) Verklaring No. 1086 van 2007 vanaf die begin tot by punte L173 en R168 op vel 4 van Plan No. P602/06, deur alle velle van hulle respektiewelike Planne te vervang met meegaande velle 1 tot 18 van Plan No. P1052/18.

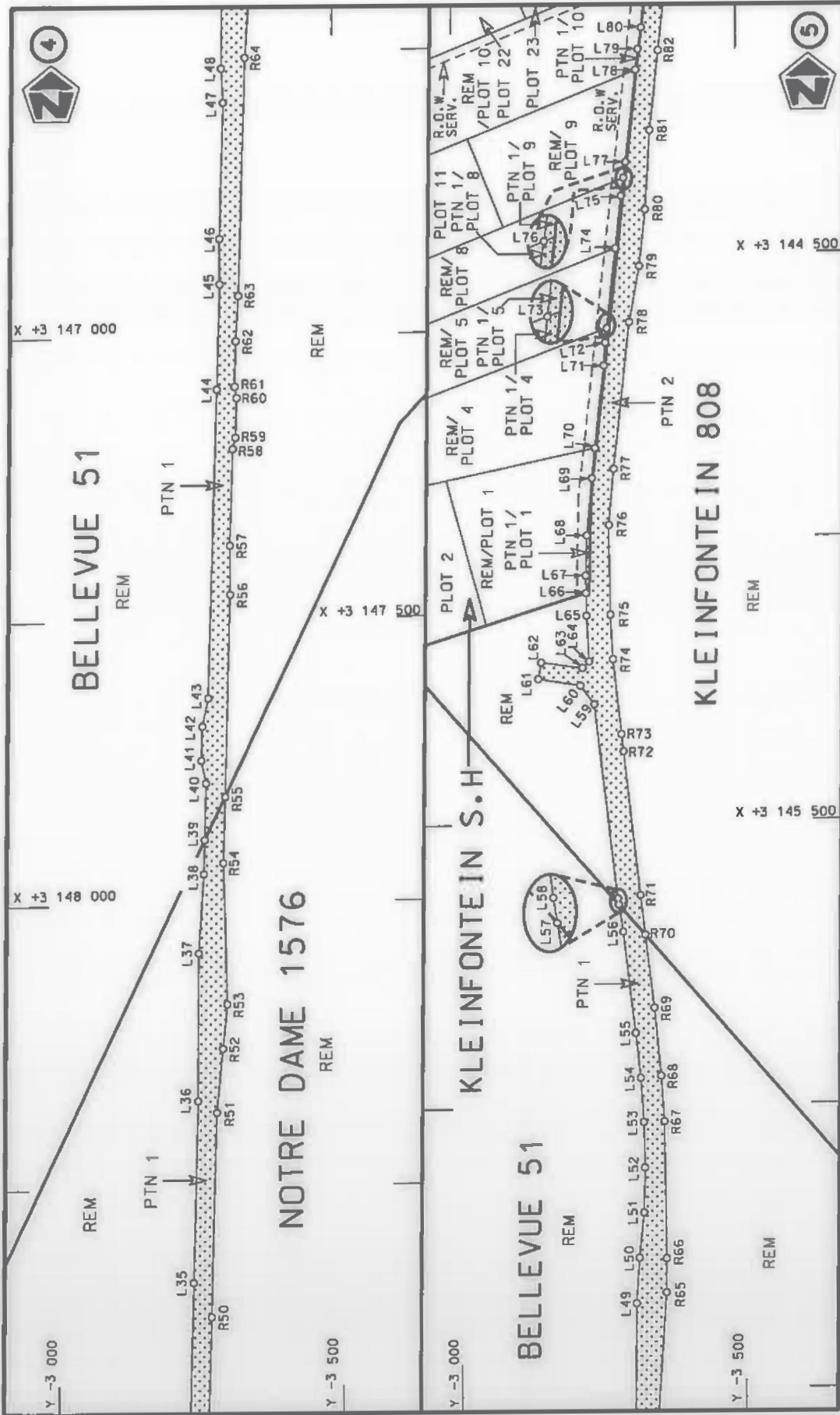
**(Nasionale Pad N1 Seksie 16X: Winburg – Ventersburg)****MINISTER VAN VERVOER**



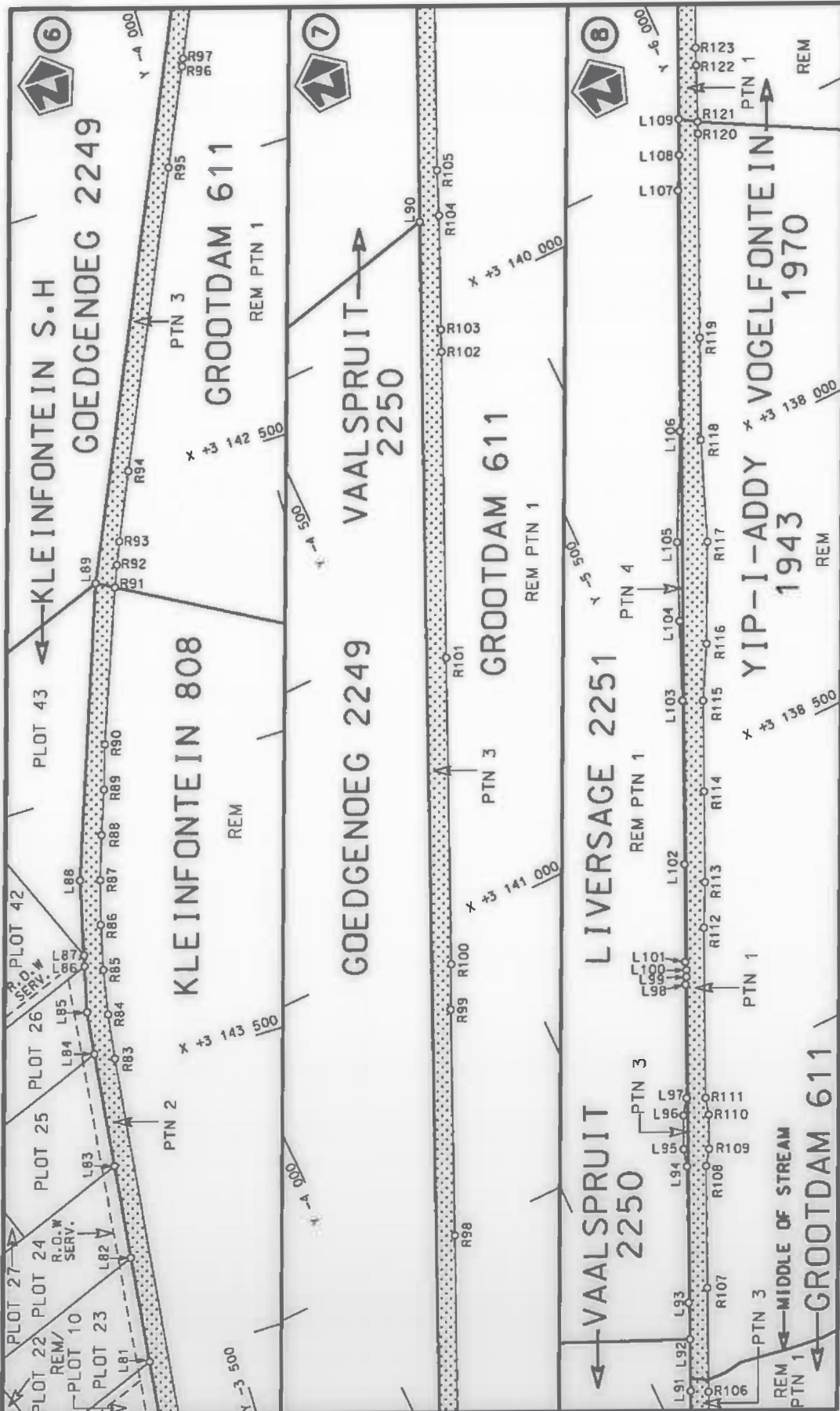
Die Suid Afrikaanse Nasionale Padagentskap MSB Bpk The South African National Roads Agency SOC Ltd	Die figuur getoon The figure shown	steldie podreserwe voor van 'n gedeelte represents the road reserve of a portion van Nasionale Roete N1 of National Route N1 Section	Vel Sheet 1 of 18 Plan P1052/18
---	---------------------------------------	---	------------------------------------



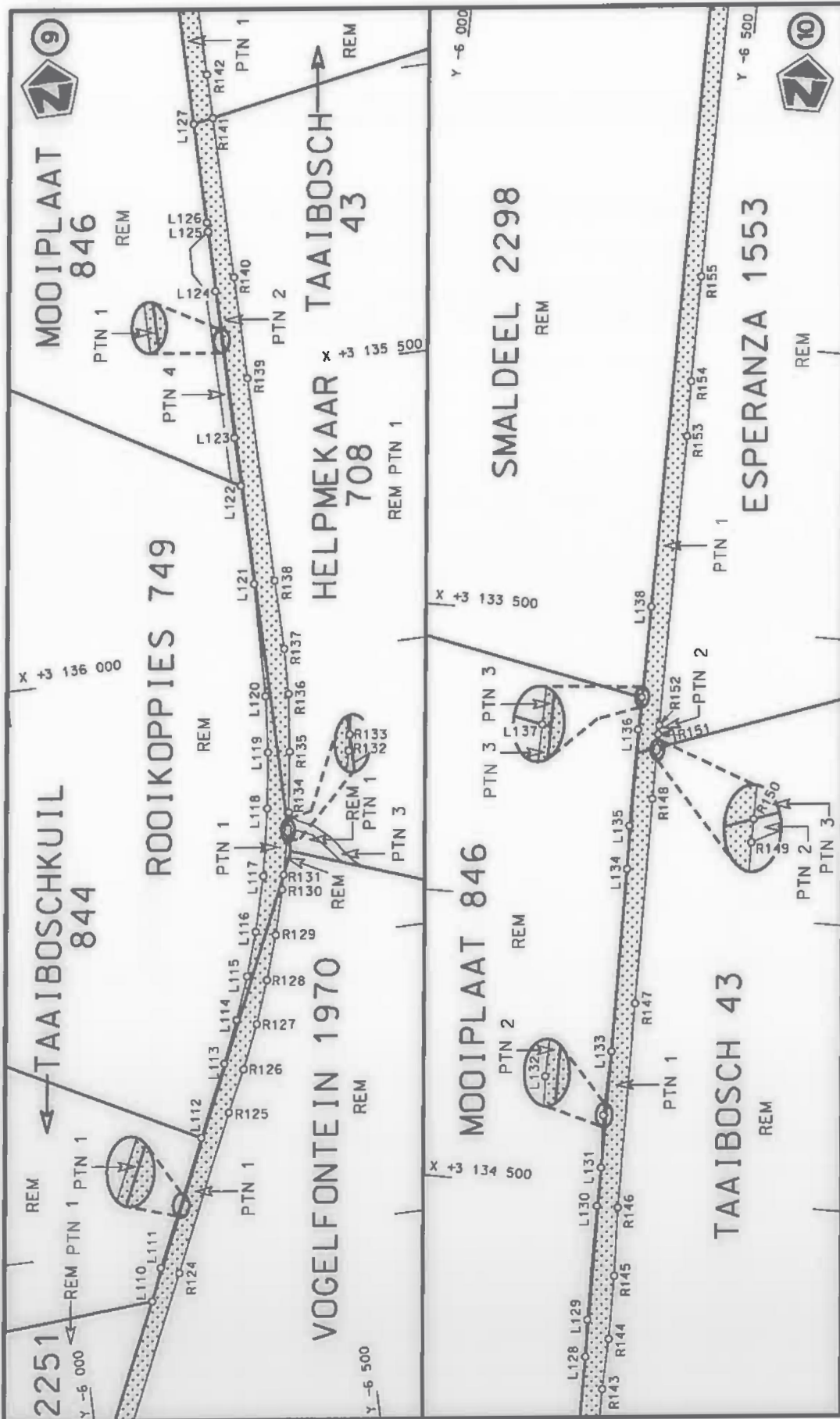
<p>Die Suid Afrikaanse Nasionale Padagentskap MSB Bpk The South African National Roads Agency SOC Ltd</p>	<p>Die figuur getoon The figure shown</p> 	<p>stelt die padreserwe voor van 'n gedeelte represents the road reserve of a portion van Nasionale Roete N1 of National Route</p> <p>16X Seksie Section</p>	<p>Vel Sheet 2 of 18 Plan P1052/18</p>
---	---	--	--



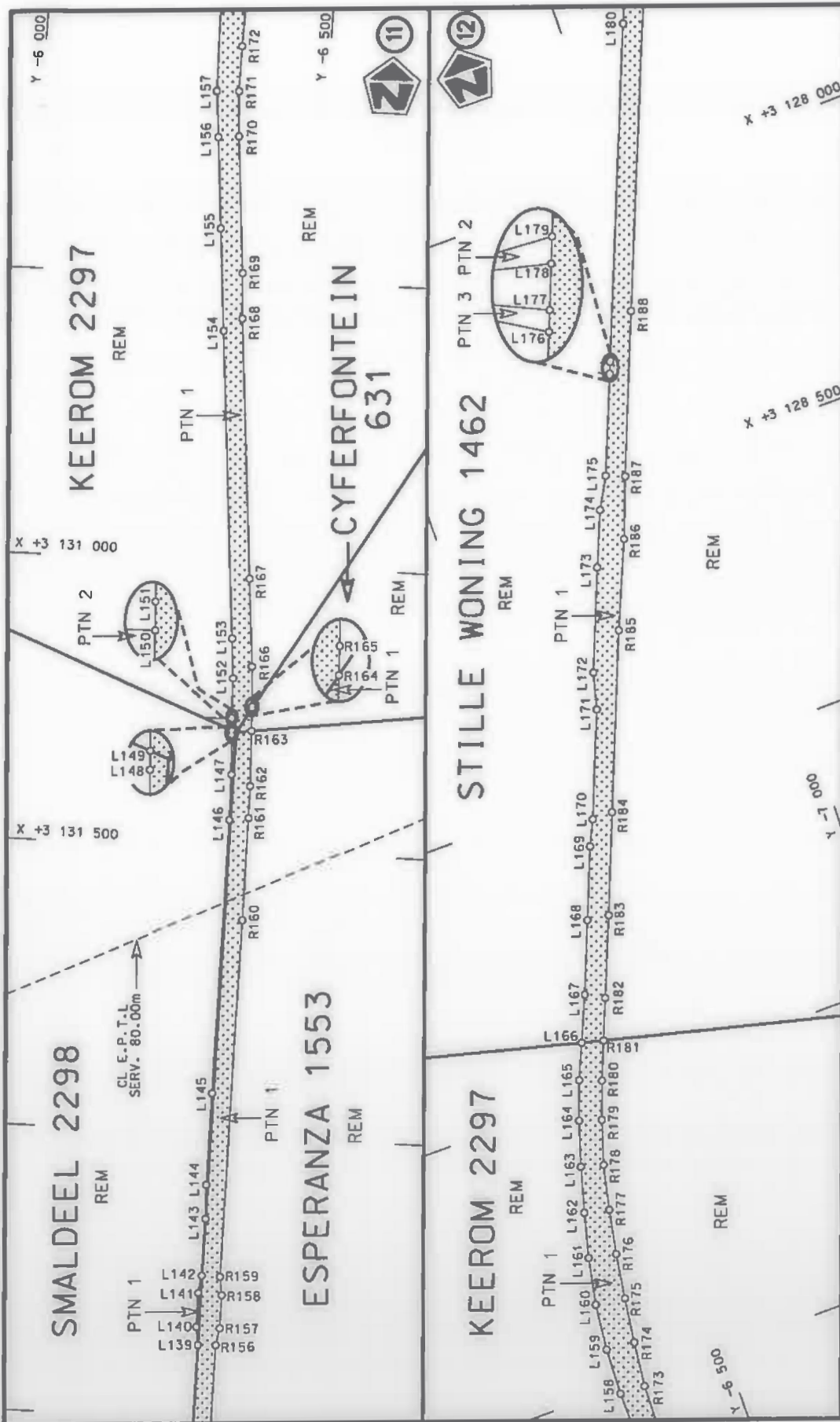
<p>Die Suid-Afrikaanse Nasionale Padwagteringsmaatskappij MSB Bpk The South African National Roads Agency SOC Ltd</p>	<p>Die figuur getoon The figure shown</p>	<p>stel die padreserwe voor van 'n gedeelte represents the road reserve of a portion van Nasionale Roete N1 of National Route</p>	<p>Vel Sheet 3 van of 18</p>
<p>16X</p>		<p>Seksie Section</p>	<p>Plan P1052/18</p>



<p>Die Suid Afrikaanse Nasionale Padagentskap MSB Bpk The South African National Roads Agency SOC Ltd</p>	<p>Die figuur getoan The figure shown</p>	<p>stelt die padreserwe voor van 'n gedeelte represents the road reserve of a portion van Nasionale Roete N1 of National Route N1</p>	<p>Section 16X</p>	<p>Plan P1052/18</p>
<p>Vel Sheet 4 of 18</p>		<p>Section 16X</p>		
<p>Plan P1052/18</p>		<p>Section 16X</p>		

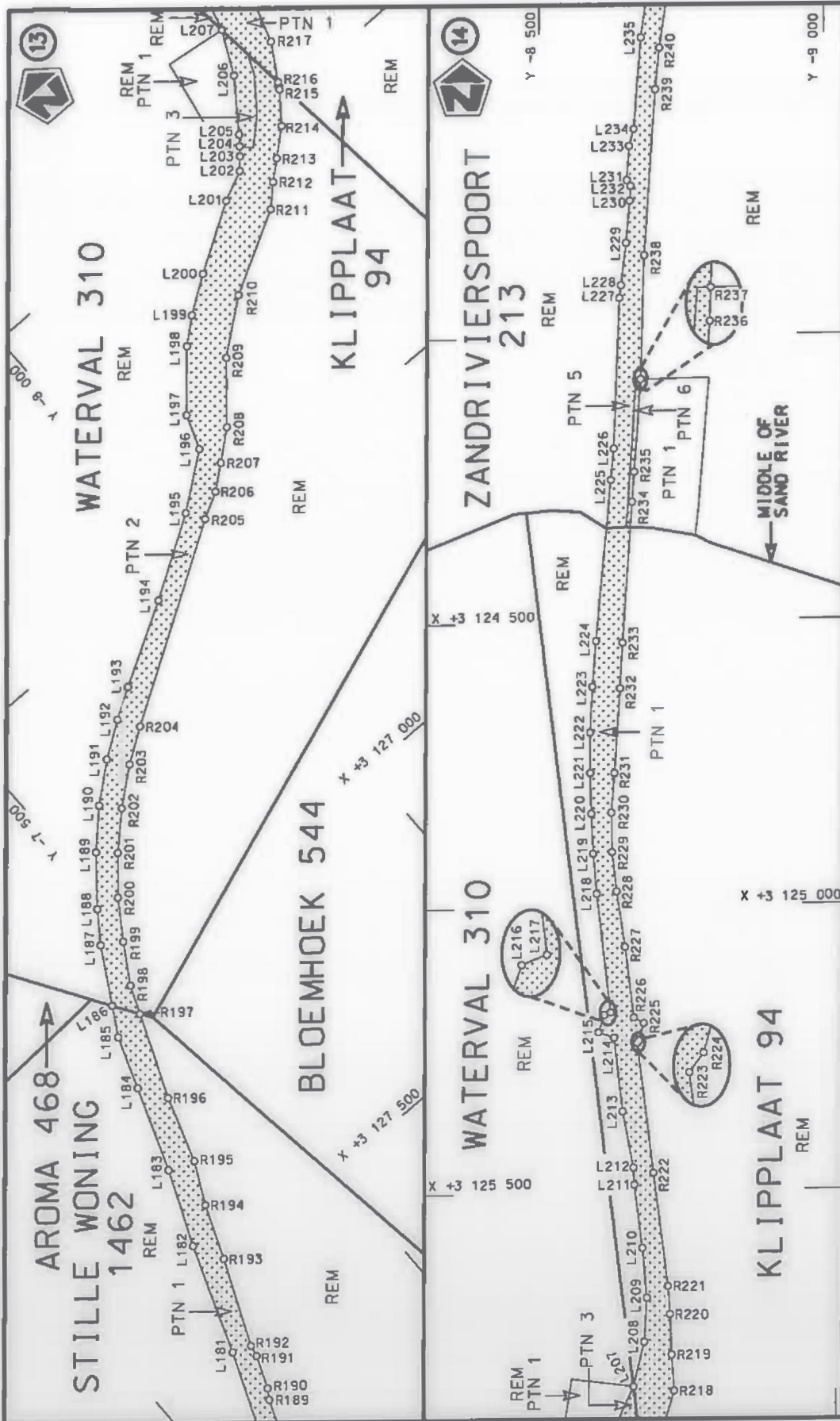


Die Suid Afrikaanse Nasionale Padagentskap MSB Bpk The South African National Roads Agency SOC Ltd	Die figuur getoon The figure shown		stel die padreserwe voor van 'n gedeelte represents the road reserve of a portion van Nasionale Roete N1 of National Route	Vel Sheet 5 of 18
			16X Seksie Section	Plan P1052/18

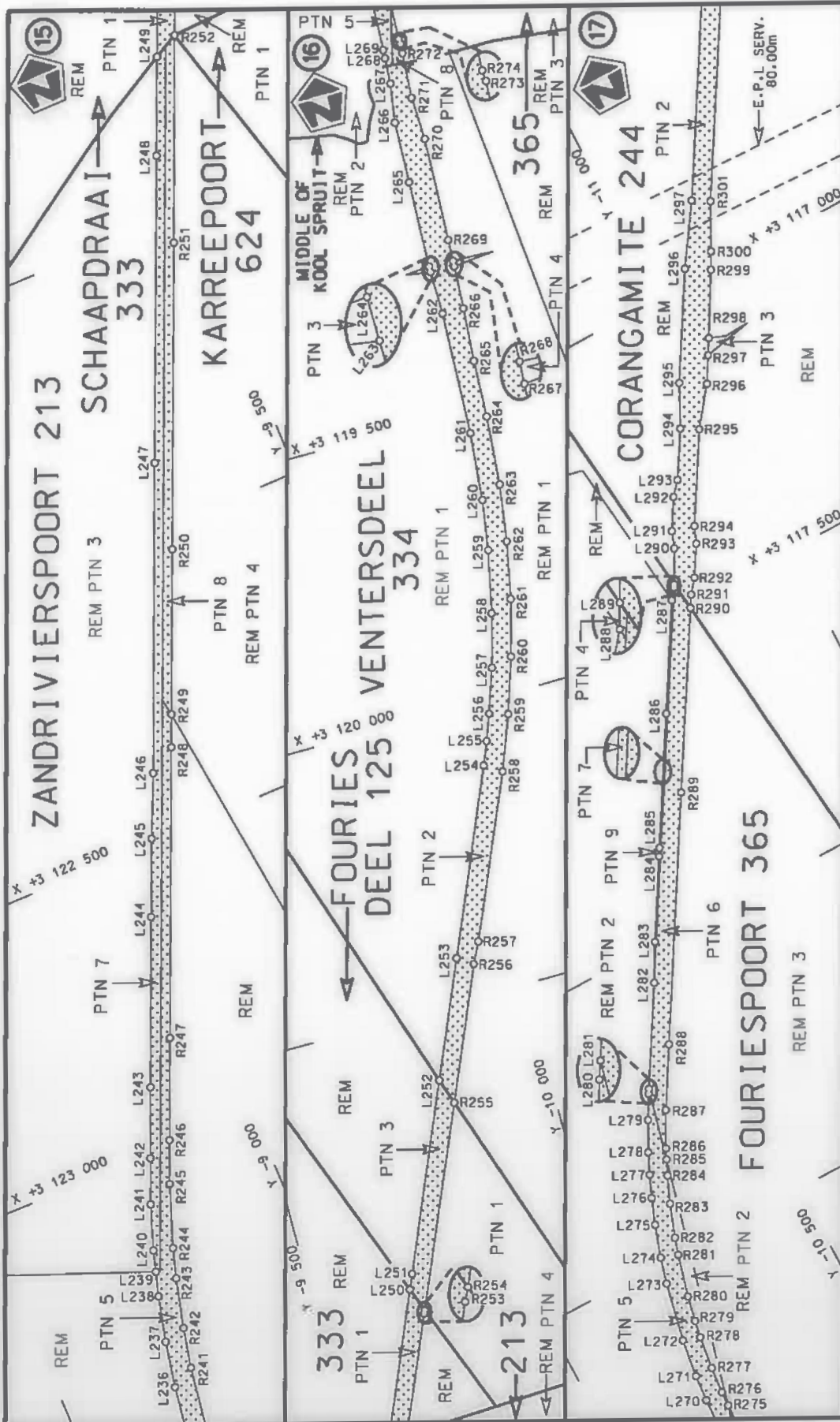


Die Suid Afrikaanse Nasionale Podagontskap MSB Bpk The South African National Roads Agency SOC Ltd	Die figuur getoon The figure shown		steldie podreserwe voor van 'n gedeelte represents the road reserve of a portion	Vel Sheet 6	van of 18
			van Nasionale Roete of National Route	N1	16X

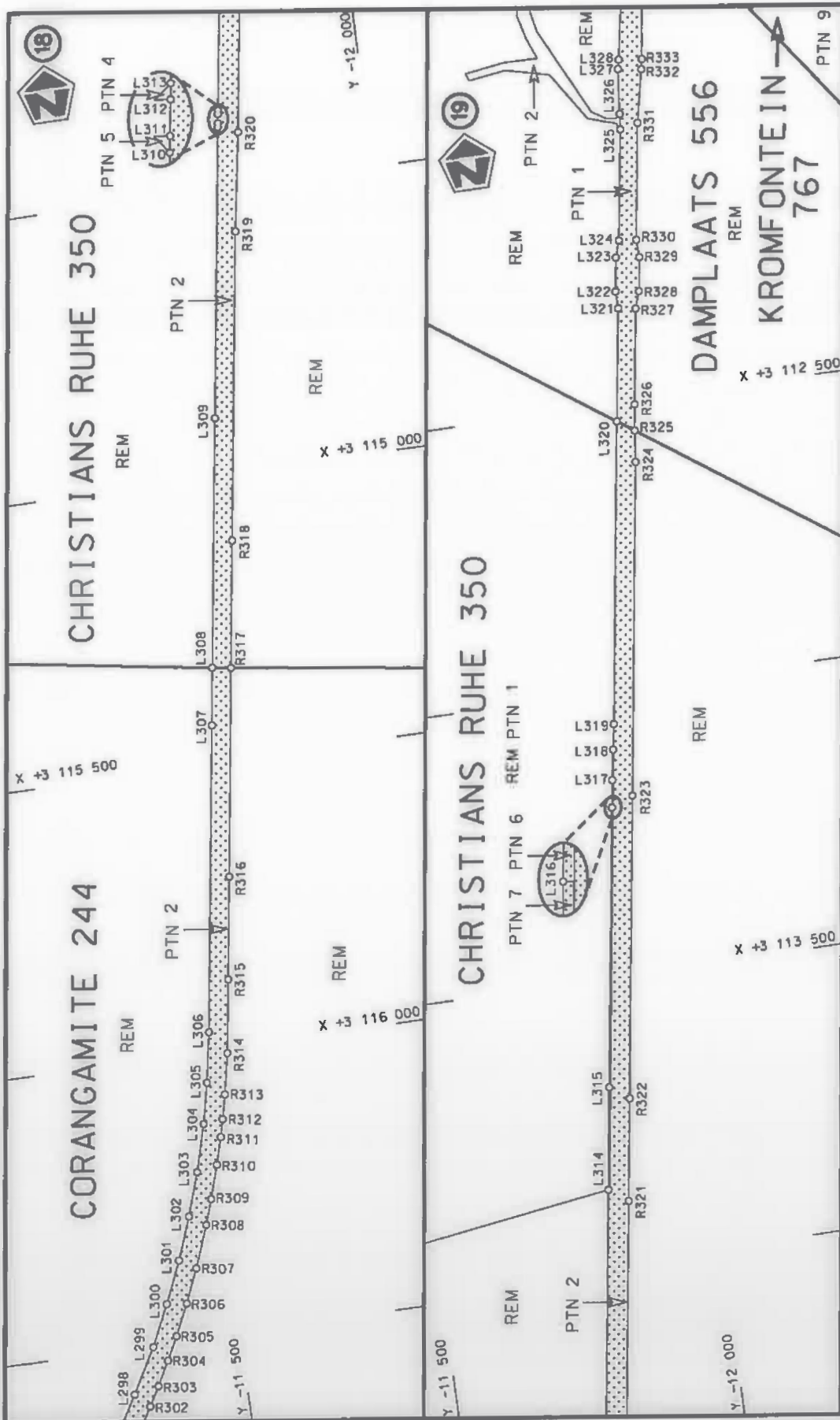




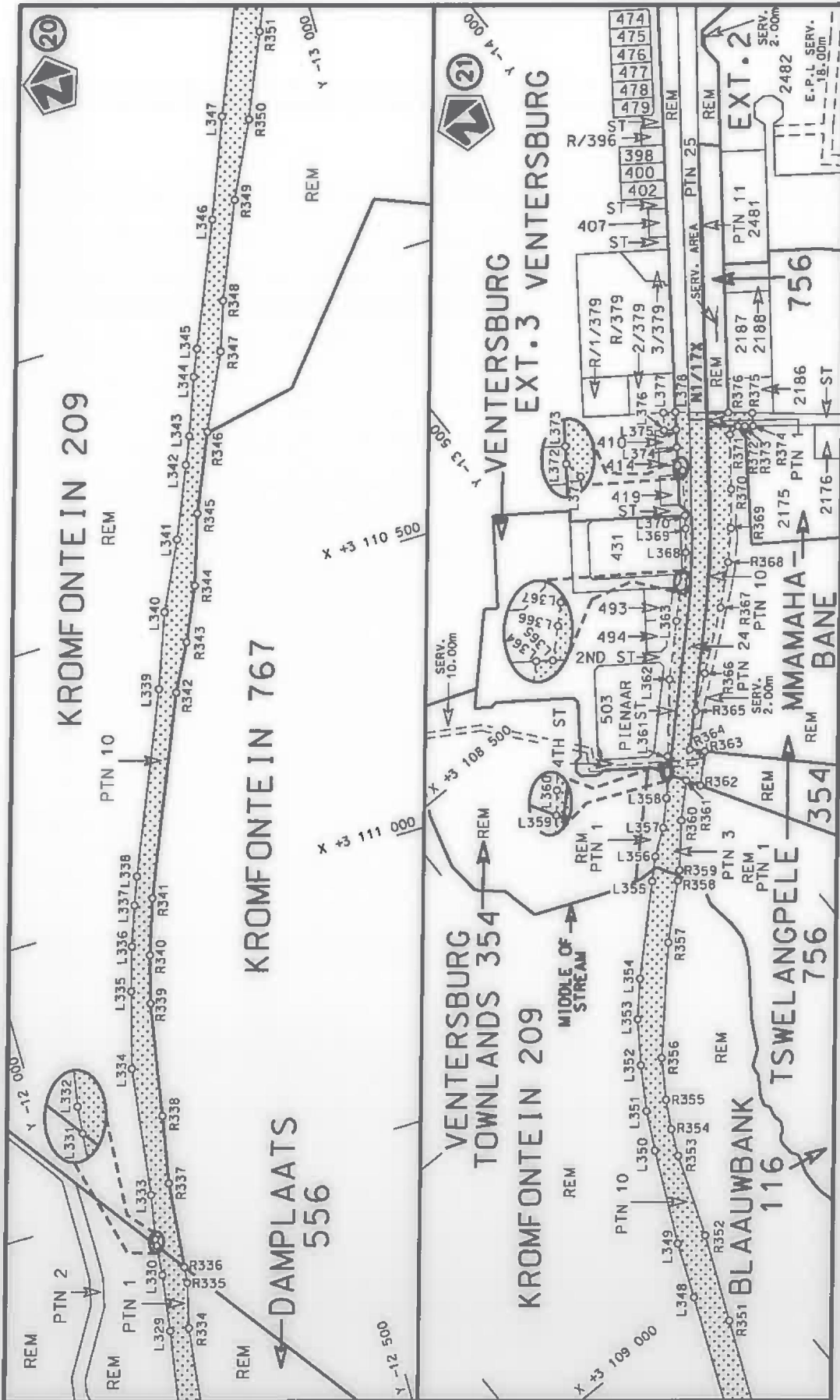
Die Suid Afrikaanse Nasionale Padagentskap MSB Bpk The South African National Roads Agency SOC Ltd	Die figuur getoon The figure shown		stel die padreserwe voor van 'n gedeelte represents the road reserve of a portion van Nasionale Roete N1 of National Route N1 Section	
			16X	Plan P1052/18
Vel Sheet 7 van of 18		Plan P1052/18		



Die Suid Afrikaanse Nasionale Padagentskap MSB Bpk The South African National Roads Agency SOC Ltd	Die figuur getoon The figure shown		stel die padreserwe voor van 'n gedeelte represents the road reserve of a portion van Nasionale Roete N1 of National Route	Vel Sheet 8 of 18
				Plan P1052/18



Die Suid Afrikaanse Nasionale Padagentskap MSB Bpk The South African National Roads Agency SOC Ltd	Die figuur getoon The figure shown		stelt die podreserwe voor van 'n gedeelte represents the road reserve of a portion van Nasionale Roete N1 of National Route N1	
			Seksie Section	16X
		Vel Sheet	9 of 18	Plan P1052/18



Die Suid Afrikaanse Nasionale Padagentskap MSB Bpk The South African National Roads Agency SOC Ltd	Die figuur getoon The figure shown		steldie padreserwe voor van 'n gedeelte represents the road reserve of a portion van Nasionale Roete N1 of National Route	16X Section
	Vel van Sheet of 10 of 18	Plan P1052/18		

PADRESERWE KOÖRDINATE / ROAD RESERVE CO-ORDINATES					
LINKERKANT/LEFT HAND SIDE			REGTERKANT/RIGHT HAND SIDE		
	Y	X	WG 27°	Y	X
L1	= 240.01	3 152 101.73	R1	- 200.32	3 152 364.14
L2	= 293.12	3 152 017.13	R2	- 253.80	3 152 244.84
L3	= 351.62	3 151 936.05	R3	- 292.63	3 152 170.15
L4	- 415.22	3 151 858.90	R4	- 344.17	3 152 084.48
L5	= 483.65	3 151 786.00	R5	= 401.40	3 152 002.50
L6	- 556.62	3 151 717.66	R6	- 464.03	3 151 924.57
L7	= 616.90	3 151 668.09	R7	= 531.79	3 151 851.05
L8	= 715.01	3 151 595.76	R8	= 604.37	3 151 782.29
L9	- 757.38	3 151 569.23	R9	= 681.43	3 151 718.58
L10	= 799.75	3 151 542.70	R10	= 762.62	3 151 660.24
L11	- 900.85	3 151 488.74	R11	- 847.57	3 151 607.51
L12	-2 010.68	3 150 947.94	R12	= 935.89	3 151 560.65
L13	-2 260.15	3 150 826.40	R13	-1 098.94	3 151 481.21
L14	-2 374.54	3 150 770.70	R14	-1 260.76	3 151 402.37
L15	-2 541.74	3 150 689.22	R15	-1 422.57	3 151 323.53
L16	-2 570.92	3 150 675.01	R16	-1 584.39	3 151 244.69
L17	-2 616.39	3 150 652.86	R17	-1 746.20	3 151 165.84
L18	-2 682.05	3 150 620.88	R18	-1 908.02	3 151 087.00
L19	-2 769.15	3 150 571.88	R19	-2 069.83	3 151 008.16
L20	-2 849.89	3 150 512.96	R20	-2 231.65	3 150 929.32
L21	-2 923.12	3 150 444.95	R21	-2 393.46	3 150 850.48
L22	-2 987.83	3 150 368.79	R22	-2 555.27	3 150 771.64
L23	-3 024.56	3 150 313.47	R23	-2 717.09	3 150 692.79
L24	-3 043.12	3 150 285.53	R24	-2 773.44	3 150 662.90
L25	-3 088.22	3 150 196.35	R25	-2 857.26	3 150 608.45
L26	-3 105.37	3 150 149.41	R26	-2 934.73	3 150 545.29
L27	-3 122.51	3 150 102.47	R27	-2 967.67	3 150 553.41
L28	-3 143.77	3 150 012.56	R28	-3 083.75	3 150 669.59
L29	-3 157.65	3 149 888.94	R29	-3 107.50	3 150 648.38
L30	-3 160.95	3 149 794.68	R30	-2 979.12	3 150 517.09
L31	-3 165.46	3 149 666.14	R31	-2 984.14	3 150 496.88
L32	-3 174.26	3 149 415.08	R32	-3 033.11	3 150 440.50
L33	-3 187.70	3 149 031.53	R33	-3 060.08	3 150 403.37
L34	-3 226.38	3 148 995.47	R34	-3 089.42	3 150 362.96
L35	-3 237.75	3 148 667.05	R35	-3 108.77	3 150 329.20
L36	-3 248.89	3 148 347.02	R36	-3 119.13	3 150 311.12
L37	-3 252.65	3 148 087.02	R37	-3 139.12	3 150 276.24
L38	-3 263.04	3 147 947.37	R38	-3 179.19	3 150 184.67
L39	-3 265.03	3 147 887.20	R39	-3 196.16	3 150 135.19
L40	-3 268.34	3 147 787.42	R40	-3 200.40	3 150 120.26
L41	-3 260.44	3 147 747.00	R41	-3 209.17	3 150 089.32
L42	-3 262.73	3 147 687.19	R42	-3 228.72	3 149 991.30
L43	-3 273.68	3 147 637.53	R43	-3 235.22	3 149 935.01
L44	-3 292.96	3 147 093.25	R44	-3 237.60	3 149 891.75
L45	-3 299.46	3 146 907.90	R45	-3 241.61	3 149 777.43
L46	-3 299.73	3 146 827.85	R46	-3 249.06	3 149 564.78
L47	-3 308.02	3 146 588.02	R47	-3 254.26	3 149 416.45
L48	-3 305.09	3 146 527.82	R48	-3 267.65	3 149 034.33
L49	-3 307.47	3 146 348.01	R49	-3 258.74	3 149 024.78
L50	-3 313.24	3 146 267.86	R50	-3 269.15	3 148 728.01
L51	-3 322.03	3 146 188.34	R51	-3 281.81	3 148 368.14

Vel 11 Van 18  
Sheet of

P1052/18

PADRESERWE KOÖRDINATE / ROAD RESERVE CO-ORDINATES					
LINKERKANT/LEFT HAND SIDE			REGTERKANT/RIGHT HAND SIDE		
	Y	X	WG 27°		X
L52	-3	324.17	3 146 109.01	R52	-3 293.65 3 148 255.76
L53	-3	322.89	3 146 029.03	R53	-3 301.75 3 148 177.61
L54	-3	318.35	3 145 950.78	R54	-3 297.28 3 147 928.33
L55	-3	310.23	3 145 871.52	R55	-3 301.32 3 147 811.88
L56	-3	289.60	3 145 692.86	R56	-3 313.68 3 147 455.79
L57	-3	282.36	3 145 644.83	R57	-3 314.00 3 147 368.90
L58	-3	280.68	3 145 633.69	R58	-3 320.33 3 147 199.03
L59	-3	242.50	3 145 291.06	R59	-3 325.28 3 147 179.04
L60	-3	218.29	3 145 257.36	R60	-3 327.71 3 147 109.11
L61	-3	144.57	3 145 244.24	R61	-3 324.44 3 147 089.11
L62	-3	150.09	3 145 215.43	R62	-3 326.96 3 147 009.07
L63	-3	222.38	3 145 226.31	R63	-3 332.04 3 146 929.17
L64	-3	233.96	3 145 215.19	R64	-3 346.83 3 146 509.50
L65	-3	230.09	3 145 134.48	R65	-3 360.03 3 146 329.63
L66	-3	229.60	3 145 094.63	R66	-3 361.06 3 146 269.70
L67	-3	229.23	3 145 063.71	R67	-3 359.01 3 146 028.38
L68	-3	231.58	3 144 992.90	R68	-3 354.10 3 145 947.80
L69	-3	241.69	3 144 892.25	R69	-3 343.25 3 145 827.60
L70	-3	247.71	3 144 839.25	R70	-3 328.47 3 145 698.69
L71	-3	264.24	3 144 693.61	R71	-3 320.46 3 145 628.89
L72	-3	266.91	3 144 653.51	R72	-3 292.93 3 145 374.62
L73	-3	269.79	3 144 628.32	R73	-3 289.60 3 145 344.45
L74	-3	285.85	3 144 487.60	R74	-3 275.99 3 145 212.19
L75	-3	296.41	3 144 395.18	R75	-3 271.96 3 145 133.40
L76	-3	301.04	3 144 363.60	R76	-3 270.67 3 144 975.20
L77	-3	305.10	3 144 335.86	R77	-3 279.75 3 144 876.55
L78	-3	323.62	3 144 173.62	R78	-3 309.27 3 144 618.28
L79	-3	327.77	3 144 137.24	R79	-3 327.48 3 144 519.54
L80	-3	334.22	3 144 098.95	R80	-3 338.73 3 144 420.23
L81	-3	346.08	3 143 995.05	R81	-3 347.76 3 144 280.33
L82	-3	367.20	3 143 809.96	R82	-3 363.49 3 144 139.82
L83	-3	385.83	3 143 646.67	R83	-3 440.54 3 143 465.60
L84	-3	408.59	3 143 447.22	R84	-3 451.46 3 143 387.17
L85	-3	417.11	3 143 372.52	R85	-3 465.89 3 143 309.46
L86	-3	436.03	3 143 293.77	R86	-3 484.06 3 143 232.40
L87	-3	440.53	3 143 275.03	R87	-3 505.64 3 143 156.22
L88	-3	471.48	3 143 146.17	R88	-3 530.54 3 143 081.00
L89	-3	646.89	3 142 652.45	R89	-3 557.51 3 143 005.49
L90	-4	896.67	3 139 850.06	R90	-3 581.74 3 142 929.44
L91	-5	057.24	3 139 490.25	R91	-3 677.12 3 142 669.38
L92	-5	094.38	3 139 406.87	R92	-3 691.99 3 142 632.44
L93	-5	118.86	3 139 347.07	R93	-3 708.03 3 142 594.19
L94	-5	216.32	3 139 127.84	R94	-3 758.39 3 142 479.54
L95	-5	223.73	3 139 097.92	R95	-3 978.05 3 141 987.80
L96	-5	248.31	3 139 043.31	R96	-4 051.00 3 141 823.96
L97	-5	265.77	3 139 017.97	R97	-4 056.96 3 141 810.83
L98	-5	347.24	3 138 835.40	R98	-4 197.79 3 141 496.16
L99	-5	354.57	3 138 823.73	R99	-4 359.42 3 141 132.41
L100	-5	359.54	3 138 812.58	R100	-4 394.27 3 141 060.30
L101	-5	363.33	3 138 798.79	R101	-4 614.34 3 140 566.99
L102	-5	434.06	3 138 641.67	R102	-4 834.35 3 140 074.14

Vel	12	Van	18
Sheet		of	

P1052/18

PADRESERWE KOÖRDINATE / ROAD RESERVE CO-ORDINATES						
LINKERKANT/LEFT HAND SIDE				REGTERKANT/RIGHT HAND SIDE		
	Y	X	WG 27°		Y	X
L103	-5 550.89	3 138	377.92	R103	-4 849.91	3 140 038.48
L104	-5 604.70	3 138	248.35	R104	-4 931.83	3 139 854.66
L105	-5 658.42	3 138	120.08	R105	-4 962.00	3 139 780.52
L106	-5 744.34	3 137	943.97	R106	-5 085.01	3 139 504.66
L107	-5 917.19	3 137	556.79	R107	-5 159.50	3 139 337.55
L108	-5 945.03	3 137	500.36	R108	-5 247.04	3 139 141.47
L109	-5 970.90	3 137	442.38	R109	-5 264.36	3 139 116.16
L110	-6 125.26	3 137	096.43	R110	-5 288.84	3 139 061.24
L111	-6 147.28	3 137	039.96	R111	-5 295.96	3 139 031.64
L112	-6 244.70	3 136	822.47	R112	-5 418.13	3 138 757.84
L113	-6 300.04	3 136	698.21	R113	-5 453.10	3 138 685.70
L114	-6 331.23	3 136	625.28	R114	-5 518.31	3 138 539.61
L115	-6 358.44	3 136	551.22	R115	-5 583.34	3 138 393.50
L116	-6 382.71	3 136	475.87	R116	-5 630.60	3 138 304.76
L117	-6 407.87	3 136	379.84	R117	-5 706.69	3 138 141.81
L118	-6 428.56	3 136	263.18	R118	-5 770.92	3 137 973.40
L119	-6 441.68	3 136	165.23	R119	-5 844.08	3 137 809.01
L120	-6 448.99	3 136	066.51	R120	-5 990.71	3 137 480.35
L121	-6 452.14	3 135	867.97	R121	-5 998.93	3 137 460.86
L122	-6 449.39	3 135	693.61	R122	-6 037.50	3 137 369.47
L123	-6 448.03	3 135	608.03	R123	-6 049.93	3 137 340.81
L124	-6 444.71	3 135	348.03	R124	-6 177.92	3 137 053.56
L125	-6 444.42	3 135	242.03	R125	-6 297.98	3 136 784.75
L126	-6 444.39	3 135	225.85	R126	-6 332.88	3 136 712.83
L127	-6 441.71	3 135	050.87	R127	-6 365.21	3 136 636.96
L128	-6 437.77	3 134	793.32	R128	-6 392.57	3 136 562.72
L129	-6 434.77	3 134	728.23	R129	-6 417.11	3 136 485.88
L130	-6 431.70	3 134	528.13	R130	-6 438.25	3 136 407.90
L131	-6 432.19	3 134	460.25	R131	-6 443.71	3 136 382.72
L132	-6 426.76	3 134	368.52	R132	-6 459.61	3 136 309.30
L133	-6 429.54	3 134	255.60	R133	-6 460.85	3 136 302.18
L134	-6 424.62	3 133	933.95	R134	-6 465.60	3 136 274.80
L135	-6 421.27	3 133	858.17	R135	-6 479.77	3 136 169.20
L136	-6 419.40	3 133	688.58	R136	-6 489.84	3 136 068.12
L137	-6 420.07	3 133	631.72	R137	-6 491.85	3 135 988.04
L138	-6 420.82	3 133	471.95	R138	-6 488.82	3 135 867.10
L139	-6 417.96	3 132	369.25	R139	-6 483.13	3 135 507.31
L140	-6 412.74	3 132	337.81	R140	-6 480.39	3 135 327.48
L141	-6 412.61	3 132	278.07	R141	-6 475.90	3 135 044.67
L142	-6 417.03	3 132	247.89	R142	-6 474.67	3 134 967.50
L143	-6 416.90	3 132	148.02	R143	-6 473.05	3 134 847.35
L144	-6 414.75	3 132	088.42	R144	-6 475.45	3 134 758.58
L145	-6 414.45	3 131	928.03	R145	-6 473.80	3 134 647.42
L146	-6 413.16	3 131	448.07	R146	-6 467.99	3 134 527.40
L147	-6 411.99	3 131	368.45	R147	-6 462.40	3 134 167.61
L148	-6 407.43	3 131	299.00	R148	-6 456.92	3 133 807.56
L149	-6 407.02	3 131	290.68	R149	-6 455.59	3 133 723.01
L150	-6 406.01	3 131	270.65	R150	-6 455.57	3 133 717.89
L151	-6 405.93	3 131	269.15	R151	-6 455.50	3 133 693.48
L152	-6 403.36	3 131	199.71	R152	-6 455.45	3 133 677.85
L153	-6 397.36	3 131	130.17	R153	-6 453.51	3 133 167.78

Vel Sheet	13	Van of	18
--------------	----	-----------	----

P1052/18

PADRESERWE KOÖRDINATE / ROAD RESERVE CO-ORDINATES					
LINKERKANT/LEFT HAND SIDE			REGTERKANT/RIGHT HAND SIDE		
	Y	X	WG 27°	Y	X
L154	-6 346.60	3 130	592.66	R154	-6 450.95 3 133 071.25
L155	-6 329.50	3 130	413.39	R155	-6 450.42 3 132 886.20
L156	-6 314.47	3 130	254.01	R156	-6 449.46 3 132 368.03
L157	-6 306.32	3 130	173.58	R157	-6 454.32 3 132 338.04
L158	-6 303.30	3 130	011.48	R158	-6 454.23 3 132 280.30
L159	-6 306.20	3 129	930.27	R159	-6 449.00 3 132 247.91
L160	-6 314.68	3 129	849.54	R160	-6 447.20 3 131 622.62
L161	-6 330.26	3 129	768.04	R161	-6 446.56 3 131 443.08
L162	-6 349.60	3 129	690.85	R162	-6 445.91 3 131 387.02
L163	-6 370.78	3 129	612.62	R163	-6 441.91 3 131 290.42
L164	-6 394.71	3 129	535.28	R164	-6 440.27 3 131 250.81
L165	-6 418.59	3 129	468.62	R165	-6 440.14 3 131 247.59
L166	-6 444.47	3 129	408.01	R166	-6 435.10 3 131 177.69
L167	-6 477.67	3 129	330.24	R167	-6 420.92 3 131 024.04
L168	-6 525.89	3 129	208.97	R168	-6 377.86 3 130 569.64
L169	-6 573.32	3 129	088.55	R169	-6 372.97 3 130 489.76
L170	-6 593.47	3 129	045.36	R170	-6 350.43 3 130 250.67
L171	-6 664.33	3 128	866.08	R171	-6 345.19 3 130 171.76
L172	-6 680.35	3 128	803.18	R172	-6 345.59 3 130 092.66
L173	-6 748.06	3 128	631.65	R173	-6 347.44 3 130 013.51
L174	-6 786.15	3 128	538.39	R174	-6 356.06 3 129 935.05
L175	-6 815.45	3 128	485.06	R175	-6 366.29 3 129 856.57
L176	-6 880.75	3 128	320.64	R176	-6 377.97 3 129 778.47
L177	-6 881.62	3 128	318.40	R177	-6 392.34 3 129 700.89
L178	-6 889.07	3 128	299.33	R178	-6 409.44 3 129 623.55
L179	-6 890.16	3 128	296.54	R179	-6 432.80 3 129 547.91
L180	-7 107.78	3 127	747.25	R180	-6 456.02 3 129 482.91
L181	-7 157.97	3 127	620.60	R181	-6 482.00 3 129 417.75
L182	-7 225.90	3 127	432.48	R182	-6 509.75 3 129 348.14
L183	-7 279.60	3 127	303.21	R183	-6 563.51 3 129 213.69
L184	-7 332.15	3 127	158.42	R184	-6 629.22 3 129 045.26
L185	-7 364.35	3 127	067.66	R185	-6 746.86 3 128 748.60
L186	-7 392.10	3 127	018.86	R186	-6 808.65 3 128 600.55
L187	-7 445.55	3 126	924.86	R187	-6 847.26 3 128 497.71
L188	-7 482.35	3 126	872.83	R188	-6 953.28 3 128 227.78
L189	-7 545.32	3 126	795.29	R189	-7 152.64 3 127 726.34
L190	-7 602.38	3 126	736.47	R190	-7 163.66 3 127 708.98
L191	-7 665.08	3 126	683.79	R191	-7 185.86 3 127 653.28
L192	-7 724.23	3 126	643.17	R192	-7 189.45 3 127 633.10
L193	-7 775.13	3 126	611.52	R193	-7 252.49 3 127 485.53
L194	-7 913.36	3 126	530.66	R194	-7 289.16 3 127 392.68
L195	-8 048.96	3 126	445.42	R195	-7 324.08 3 127 320.81
L196	-8 139.69	3 126	375.73	R196	-7 360.97 3 127 206.27
L197	-8 161.14	3 126	315.46	R197	-7 419.55 3 127 061.69
L198	-8 239.65	3 126	223.97	R198	-7 439.25 3 127 013.08
L199	-8 281.53	3 126	188.18	R199	-7 479.48 3 126 946.19
L200	-8 343.31	3 126	145.78	R200	-7 522.67 3 126 880.98
L201	-8 457.06	3 126	074.89	R201	-7 573.25 3 126 821.10
L202	-8 509.03	3 126	050.78	R202	-7 629.12 3 126 766.20
L203	-8 525.98	3 126	031.14	R203	-7 689.61 3 126 716.71
L204	-8 536.80	3 126	017.28	R204	-7 746.30 3 126 677.92

Vel Sheet 14 Van of 18

P1052/18



PADRESERWE KOÖRDINATE / ROAD RESERVE CO-ORDINATES					
LINKERKANT/LEFT HAND SIDE			REGTERKANT/RIGHT HAND SIDE		
	Y	X	WG 27°	Y	X
L205	-8 549.35	3 126 001.21		R205	-8 068.14 3 126 475.98
L206	-8 609.79	3 125 915.99		R206	-8 112.86 3 126 451.12
L207	-8 645.21	3 125 840.97		R207	-8 152.31 3 126 418.95
L208	-8 665.12	3 125 763.10		R208	-8 201.09 3 126 378.52
L209	-8 670.33	3 125 686.19		R209	-8 279.05 3 126 284.90
L210	-8 663.34	3 125 598.73		R210	-8 366.50 3 126 215.27
L211	-8 650.29	3 125 487.85		R211	-8 506.42 3 126 137.57
L212	-8 649.12	3 125 457.75		R212	-8 540.49 3 126 103.67
L213	-8 630.87	3 125 358.92		R213	-8 572.20 3 126 076.26
L214	-8 616.79	3 125 229.50		R214	-8 615.39 3 126 038.47
L215	-8 589.39	3 125 219.19		R215	-8 654.05 3 125 987.04
L216	-8 600.26	3 125 189.10		R216	-8 660.46 3 125 976.00
L217	-8 611.34	3 125 184.79		R217	-8 696.94 3 125 913.16
L218	-8 588.37	3 124 976.58		R218	-8 716.74 3 125 849.78
L219	-8 582.97	3 124 905.92		R219	-8 712.89 3 125 786.59
L220	-8 580.36	3 124 835.46		R220	-8 710.73 3 125 715.60
L221	-8 579.17	3 124 764.21		R221	-8 707.64 3 125 666.40
L222	-8 579.55	3 124 693.50		R222	-8 683.96 3 125 467.41
L223	-8 584.25	3 124 613.15		R223	-8 657.58 3 125 239.47
L224	-8 591.31	3 124 533.52		R224	-8 660.73 3 125 235.22
L225	-8 619.97	3 124 251.04		R225	-8 669.46 3 125 204.73
L226	-8 625.57	3 124 195.91		R226	-8 652.16 3 125 194.60
L227	-8 637.95	3 123 932.25		R227	-8 637.57 3 125 070.22
L228	-8 640.70	3 123 910.02		R228	-8 623.57 3 124 972.99
L229	-8 650.60	3 123 836.11		R229	-8 616.45 3 124 903.69
L230	-8 657.50	3 123 762.27		R230	-8 615.76 3 124 834.54
L231	-8 659.18	3 123 736.33		R231	-8 621.97 3 124 765.43
L232	-8 652.71	3 123 725.86		R232	-8 633.11 3 124 616.89
L233	-8 657.14	3 123 665.98		R233	-8 638.01 3 124 537.13
L234	-8 665.31	3 123 636.39		R234	-8 657.16 3 124 290.37
L235	-8 678.67	3 123 476.12		R235	-8 661.26 3 124 237.65
L236	-8 690.55	3 123 396.15		R236	-8 673.93 3 124 075.56
L237	-8 706.43	3 123 316.79		R237	-8 673.94 3 124 075.17
L238	-8 725.71	3 123 238.36		R238	-8 681.98 3 123 858.30
L239	-8 737.71	3 123 196.77		R239	-8 703.49 3 123 567.69
L240	-8 748.16	3 123 160.57		R240	-8 711.06 3 123 494.77
L241	-8 774.86	3 123 084.33		R241	-8 729.08 3 123 375.92
L242	-8 805.54	3 123 009.55		R242	-8 743.91 3 123 306.34
L243	-8 853.28	3 122 894.96		R243	-8 765.75 3 123 220.97
L244	-8 969.19	3 122 619.88		R244	-8 781.07 3 123 169.96
L245	-9 022.56	3 122 493.37		R245	-8 818.76 3 123 064.25
L246	-9 069.19	3 122 388.80		R246	-8 848.09 3 122 993.45
L247	-9 280.07	3 121 887.81		R247	-8 917.79 3 122 828.27
L248	-9 489.09	3 121 391.56		R248	-9 115.36 3 122 359.08
L249	-9 556.34	3 121 231.69		R249	-9 137.60 3 122 306.13
L250	-9 669.25	3 120 963.23		R250	-9 249.81 3 122 039.58
L251	-9 679.95	3 120 937.79		R251	-9 458.21 3 121 544.37
L252	-9 812.67	3 120 622.62		R252	-9 598.51 3 121 208.43
L253	-9 896.26	3 120 424.11		R253	-9 682.53 3 121 010.97
L254	-10 027.94	3 120 110.32		R254	-9 685.37 3 121 005.06
L255	-10 043.89	3 120 070.30		R255	-9 827.86 3 120 667.59

Vel  
Sheet

15

Van  
of

18

P1052/18

PADRESERWE KOÖRDINATE / ROAD RESERVE CO-ORDINATES					
LINKERKANT/LEFT HAND SIDE			REGTERKANT/RIGHT HAND SIDE		
Y	X	WG 27°	Y	X	
L256	-10 060.14	3 120 024.97	R256	-9 922.53	3 120 441.73
L257	-10 085.57	3 119 948.39	R257	-9 940.53	3 120 405.93
L258	-10 109.28	3 119 856.12	R258	-10 057.08	3 120 129.20
L259	-10 131.81	3 119 747.57	R259	-10 092.28	3 120 034.76
L260	-10 144.41	3 119 659.65	R260	-10 122.89	3 119 938.42
L261	-10 154.05	3 119 540.80	R261	-10 148.06	3 119 840.91
L262	-10 160.65	3 119 325.28	R262	-10 166.99	3 119 741.38
L263	-10 159.38	3 119 248.93	R263	-10 180.34	3 119 641.39
L264	-10 159.21	3 119 238.93	R264	-10 188.81	3 119 520.39
L265	-10 163.13	3 119 086.65	R265	-10 192.17	3 119 420.24
L266	-10 165.63	3 118 979.06	R266	-10 197.85	3 119 326.17
L267	-10 175.65	3 118 910.56	R267	-10 201.26	3 119 250.67
L268	-10 177.59	3 118 865.20	R268	-10 201.71	3 119 240.68
L269	-10 178.23	3 118 850.40	R269	-10 203.13	3 119 202.95
L270	-10 181.58	3 118 750.24	R270	-10 209.07	3 119 020.67
L271	-10 185.15	3 118 704.25	R271	-10 204.96	3 118 944.48
L272	-10 193.75	3 118 638.05	R272	-10 209.12	3 118 864.77
L273	-10 214.54	3 118 536.35	R273	-10 209.99	3 118 847.92
L274	-10 226.72	3 118 491.03	R274	-10 209.08	3 118 837.85
L275	-10 244.49	3 118 435.31	R275	-10 211.31	3 118 776.48
L276	-10 260.96	3 118 390.74	R276	-10 212.23	3 118 751.09
L277	-10 276.53	3 118 353.13	R277	-10 215.99	3 118 704.90
L278	-10 292.64	3 118 317.32	R278	-10 223.29	3 118 647.74
L279	-10 318.36	3 118 266.65	R279	-10 228.42	3 118 618.00
L280	-10 340.54	3 118 226.40	R280	-10 237.30	3 118 574.26
L281	-10 344.74	3 118 219.25	R281	-10 255.77	3 118 501.31
L282	-10 438.90	3 118 058.90	R282	-10 264.74	3 118 472.03
L283	-10 473.14	3 117 995.93	R283	-10 284.53	3 118 415.29
L284	-10 548.86	3 117 866.44	R284	-10 303.41	3 118 369.03
L285	-10 556.43	3 117 853.50	R285	-10 315.05	3 118 343.26
L286	-10 675.20	3 117 650.39	R286	-10 322.97	3 118 325.71
L287	-10 775.68	3 117 478.67	R287	-10 353.79	3 118 266.22
L288	-10 789.53	3 117 461.22	R288	-10 411.72	3 118 166.56
L289	-10 792.22	3 117 456.10	R289	-10 634.82	3 117 785.17
L290	-10 821.52	3 117 400.28	R290	-10 798.18	3 117 506.47
L291	-10 831.77	3 117 371.46	R291	-10 810.02	3 117 486.28
L292	-10 861.87	3 117 319.71	R292	-10 828.92	3 117 462.52
L293	-10 881.89	3 117 296.63	R293	-10 859.25	3 117 411.15
L294	-10 927.83	3 117 219.10	R294	-10 870.36	3 117 382.69
L295	-10 963.01	3 117 147.23	R295	-10 956.30	3 117 235.84
L296	-11 063.89	3 116 974.42	R296	-11 005.10	3 117 171.68
L297	-11 129.70	3 116 873.80	R297	-11 030.07	3 117 128.29
L298	-11 301.34	3 116 580.43	R298	-11 044.79	3 117 102.15
L299	-11 344.44	3 116 502.49	R299	-11 103.61	3 116 997.67
L300	-11 378.43	3 116 431.01	R300	-11 118.45	3 116 969.35
L301	-11 409.60	3 116 358.13	R301	-11 158.32	3 116 890.71
L302	-11 437.43	3 116 284.28	R302	-11 325.49	3 116 605.18
L303	-11 462.13	3 116 208.98	R303	-11 344.69	3 116 571.72
L304	-11 484.62	3 116 126.37	R304	-11 367.30	3 116 529.60
L305	-11 500.31	3 116 055.37	R305	-11 387.73	3 116 489.11
L306	-11 515.68	3 115 968.08	R306	-11 413.19	3 116 434.90

Vel Sheet	16	Van of	18	P1052/18
--------------	----	-----------	----	----------

PADRESERWE KOÖRDINATE / ROAD RESERVE CO-ORDINATES					
LINKERKANT/LEFT HAND SIDE			REGTERKANT/RIGHT HAND SIDE		
	Y	X	WG 27°	Y	X
L308	-11 606.09	3 115	333.25	R308	-11 466.05 3 116 303.07
L309	-11 668.05	3 114	898.72	R309	-11 480.96 3 116 259.48
L310	-11 740.08	3 114	391.97	R310	-11 498.72 3 116 201.20
L311	-11 741.13	3 114	384.61	R311	-11 511.85 3 116 153.77
L312	-11 743.41	3 114	368.72	R312	-11 519.34 3 116 122.89
L313	-11 744.42	3 114	361.67	R313	-11 528.98 3 116 080.48
L314	-11 814.87	3 113	869.34	R314	-11 542.70 3 116 009.00
L315	-11 840.00	3 113	690.71	R315	-11 561.58 3 115 880.92
L316	-11 909.51	3 113	204.06	R316	-11 587.21 3 115 701.88
L317	-11 916.34	3 113	156.23	R317	-11 638.87 3 115 338.30
L318	-11 924.86	3 113	103.19	R318	-11 670.39 3 115 116.43
L319	-11 932.03	3 113	058.61	R319	-11 747.19 3 114 578.00
L320	-12 006.93	3 112	531.71	R320	-11 774.60 3 114 405.25
L321	-12 035.16	3 112	334.43	R321	-11 847.36 3 113 893.84
L322	-12 034.48	3 112	304.55	R322	-11 872.85 3 113 715.53
L323	-12 042.95	3 112	245.42	R323	-11 947.95 3 113 188.35
L324	-12 052.03	3 112	216.39	R324	-12 030.41 3 112 607.16
L325	-12 079.69	3 112	022.92	R325	-12 036.00 3 112 552.26
L326	-12 082.11	3 111	995.91	R326	-12 041.92 3 112 506.50
L327	-12 089.45	3 111	917.03	R327	-12 065.62 3 112 339.38
L328	-12 092.97	3 111	900.77	R328	-12 075.71 3 112 310.05
L329	-12 121.71	3 111	731.14	R329	-12 084.20 3 112 250.69
L330	-12 135.70	3 111	631.65	R330	-12 082.72 3 112 219.91
L331	-12 140.27	3 111	578.83	R331	-12 111.70 3 112 015.99
L332	-12 141.29	3 111	567.12	R332	-12 130.63 3 111 923.44
L333	-12 155.50	3 111	489.28	R333	-12 133.72 3 111 905.72
L334	-12 184.46	3 111	264.10	R334	-12 154.84 3 111 735.58
L335	-12 221.10	3 111	131.87	R335	-12 173.89 3 111 657.51
L336	-12 244.17	3 111	055.38	R336	-12 176.64 3 111 629.07
L337	-12 268.29	3 110	986.44	R337	-12 191.43 3 111 478.44
L338	-12 286.85	3 110	938.44	R338	-12 213.26 3 111 360.14
L339	-12 415.37	3 110	629.24	R339	-12 247.73 3 111 161.78
L340	-12 462.36	3 110	500.37	R340	-12 270.36 3 111 079.28
L341	-12 518.57	3 110	382.86	R341	-12 302.45 3 110 983.04
L342	-12 569.62	3 110	259.71	R342	-12 442.72 3 110 643.97
L343	-12 589.57	3 110	212.20	R343	-12 484.76 3 110 562.96
L344	-12 625.81	3 110	113.54	R344	-12 526.38 3 110 470.68
L345	-12 645.23	3 110	066.85	R345	-12 565.71 3 110 348.73
L346	-12 733.97	3 109	853.65	R346	-12 622.22 3 110 214.08
L347	-12 800.08	3 109	682.25	R347	-12 683.82 3 110 083.54
L348	-12 881.28	3 109	483.34	R348	-12 712.29 3 109 997.98
L349	-12 918.90	3 109	390.66	R349	-12 781.19 3 109 831.48
L350	-12 989.90	3 109	235.51	R350	-12 844.21 3 109 700.85
L351	-13 021.79	3 109	171.27	R351	-12 904.48 3 109 555.82
L352	-13 064.62	3 109	101.19	R352	-12 965.48 3 109 409.96
L353	-13 110.93	3 109	033.21	R353	-13 016.10 3 109 268.90
L354	-13 158.93	3 108	979.60	R354	-13 035.98 3 109 224.04
L355	-13 283.27	3 108	857.87	R355	-13 061.33 3 109 177.34
L356	-13 315.00	3 108	826.71	R356	-13 101.24 3 109 114.22
L357	-13 357.66	3 108	795.69	R357	-13 238.18 3 108 961.16
L358	-13 395.12	3 108	758.09	R358	-13 319.55 3 108 886.02

Vel  
Sheet17 Van  
of 18

P1052/18

## PADRESERWE KOÖRDINATE / ROAD RESERVE CO-ORDINATES

LINKERKANT/LEFT HAND SIDE				REGTERKANT/RIGHT HAND SIDE			
	Y	X	WG 27°		Y	X	
L359	-13 422.99	3 108 724.91		R359	-13 333.22	3 108 873.41	
L360	-13 426.52	3 108 720.66		R360	-13 390.97	3 108 806.01	
L361	-13 442.77	3 108 701.32		R361	-13 441.47	3 108 755.82	
L362	-13 530.44	3 108 596.43		R362	-13 455.35	3 108 778.98	
L363	-13 604.20	3 108 523.10		R363	-13 499.56	3 108 736.14	
L364	-13 647.43	3 108 480.12		R364	-13 480.55	3 108 716.97	
L365	-13 650.40	3 108 482.28		R365	-13 531.42	3 108 670.05	
L366	-13 656.05	3 108 477.00		R366	-13 585.54	3 108 627.51	
L367	-13 663.87	3 108 469.19		R367	-13 679.85	3 108 553.79	
L368	-13 692.72	3 108 437.96		R368	-13 740.55	3 108 499.75	
L369	-13 718.91	3 108 404.42		R369	-13 782.03	3 108 455.06	
L370	-13 732.52	3 108 385.46		R370	-13 825.05	3 108 401.47	
L371	-13 778.95	3 108 320.79		R371	-13 883.65	3 108 323.47	
L372	-13 776.97	3 108 308.83		R372	-13 904.42	3 108 320.97	
L373	-13 778.13	3 108 307.24		R373	-13 913.79	3 108 328.57	
L374	-13 796.59	3 108 281.76		R374	-13 925.18	3 108 337.57	
L375	-13 815.07	3 108 256.26		R375	-13 938.94	3 108 319.00	
L376	-13 797.61	3 108 243.61		R376	-13 905.90	3 108 291.28	
L377	-13 816.10	3 108 218.12					
L378	-13 833.54	3 108 230.76					

Vel Sheet	18	Van of	18
--------------	----	-----------	----

P1052/18