

DEPARTMENT OF TRANSPORT

NO. 425

15 MARCH 2019

**THE SOUTH AFRICAN NATIONAL ROADS
AGENCY SOC LIMITED**

Registration No: 1998/009584/30

DECLARATION AMENDMENT OF NATIONAL ROAD R335 SECTION 1**AMENDMENT OF DECLARATION No. 733 OF 2016.**

By virtue of section 40(1)(b) of the South African National Roads Agency Limited and the National Roads Act 1998 (Act No. 7 of 1998), I hereby amend Declaration No. 733 of 2016 by substituting paragraph J of the Schedule, being the descriptive declaration of the route from its junction with National Road N2 Section 11 up to its junction with National Road R342 Section 1, near Coerney Railway Station, with the accompanying sheets 1 to 17 of Plan No. P1054/18.

(National Road R335 Section 1: N2 Junction – R342 Junction)**MINISTER OF TRANSPORT**

DEPARTEMENT VAN VERVOER

NO. 425

15 MAART 2019

**DIE SUID-AFRIKAANSE NASIONALE
PADAGENTSKAP MSB BEPERK**

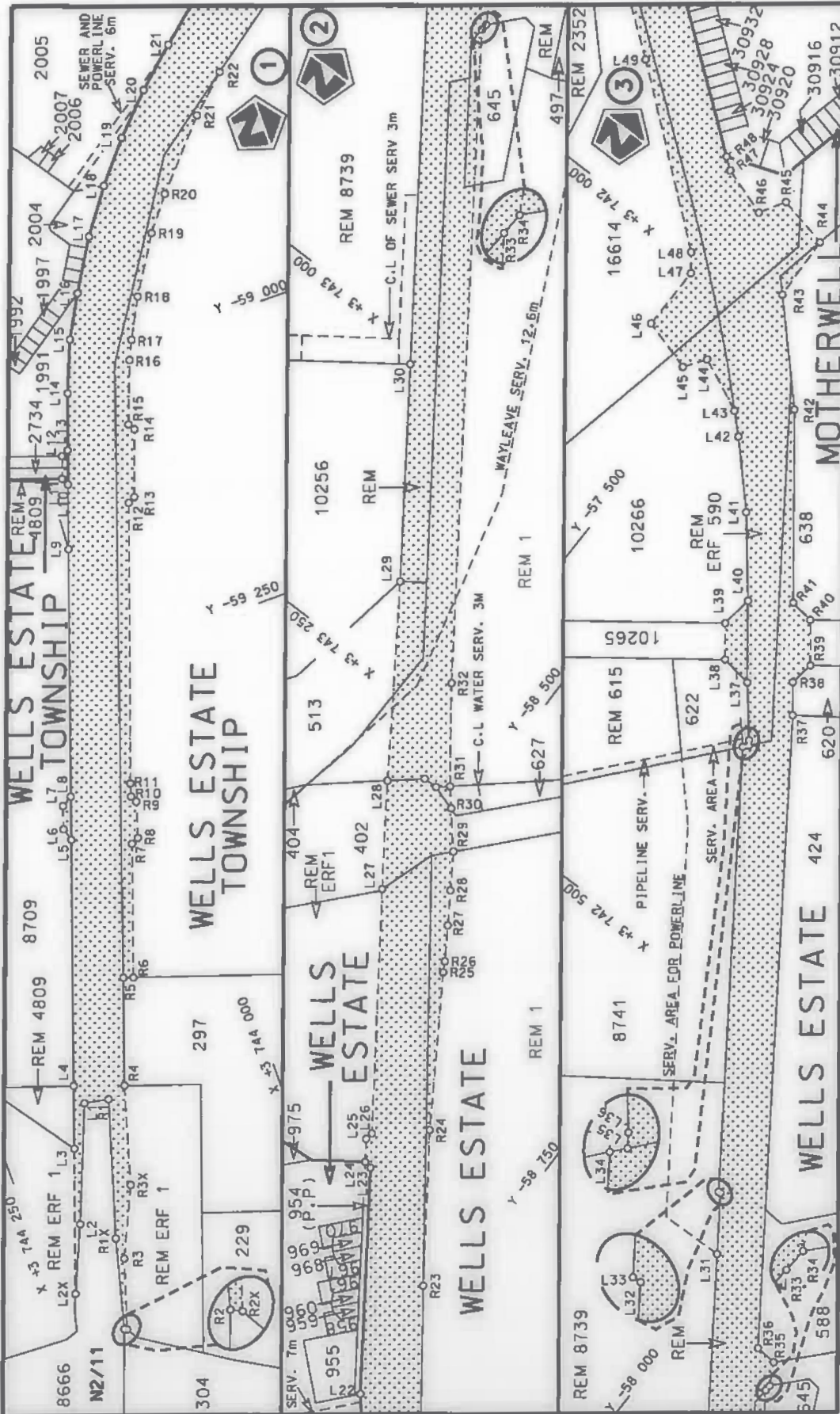
Registrasie No: 1998/009584/30

VERKLARING WYSIGING VAN NASIONALE PAD R335 SEKSIE 1

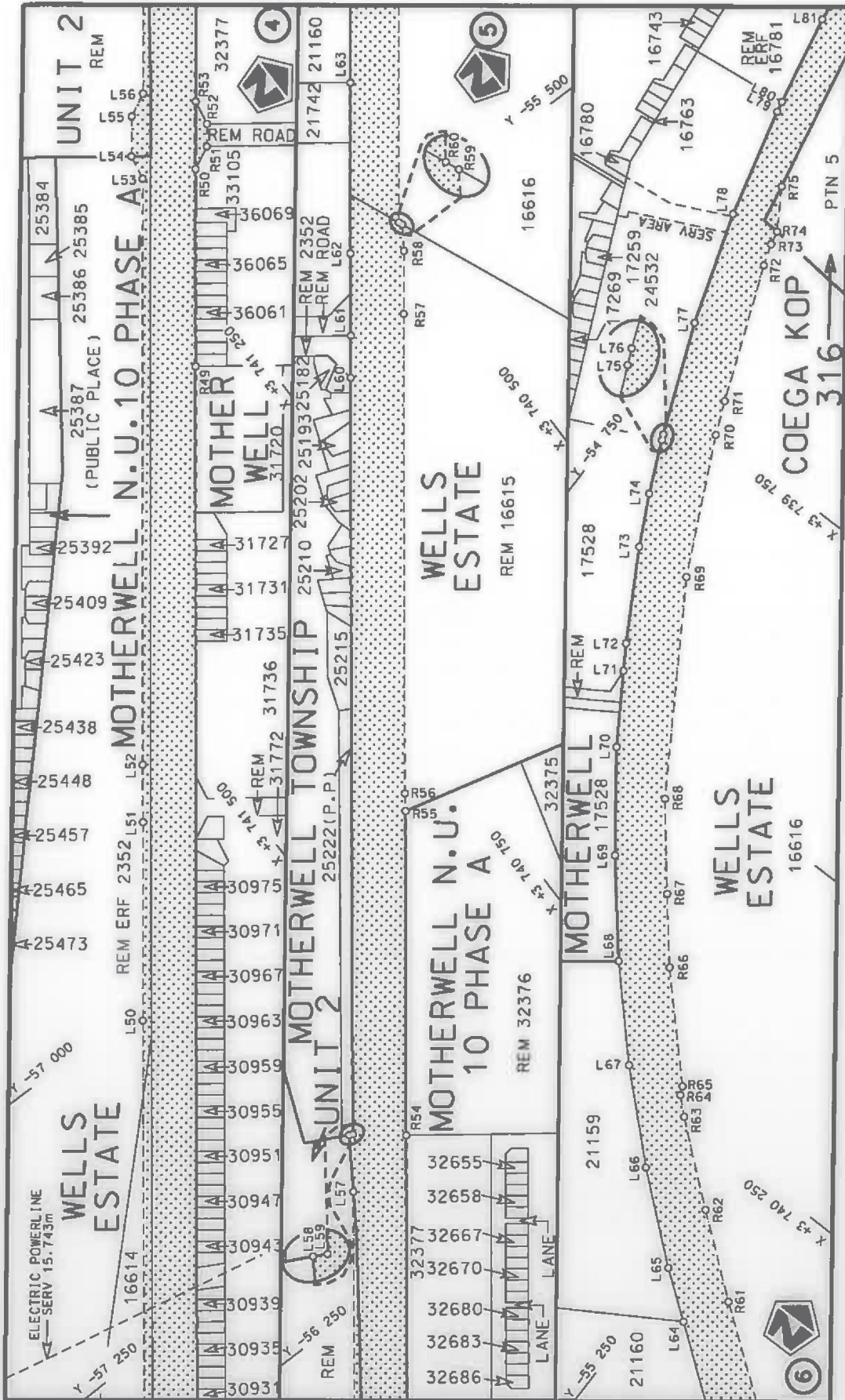
WYSIGING VAN VERKLARING No. 733 VAN 2016.


Kragtens Artikel 40(1)(b) van die Suid-Afrikaanse Nasionale Padagentskap Beperk en Nasionale Paaie Wet 1998 (Wet No. 7 van 1998), wysig ek hiermee Verklaring No. 733 van 2016 deur paragraaf J van die Skedule te vervang, synde die gedeelte van die beskrywende verklaring van die pad vanaf die aansluiting met Nasionale Pad N2 Seksie 11 tot by die aansluiting met Nasionale Pad R342 Seksie 1, naby Coermey spoorweg stasie, met bygaande velle 1 tot 17 van Plan No. P1054/18.

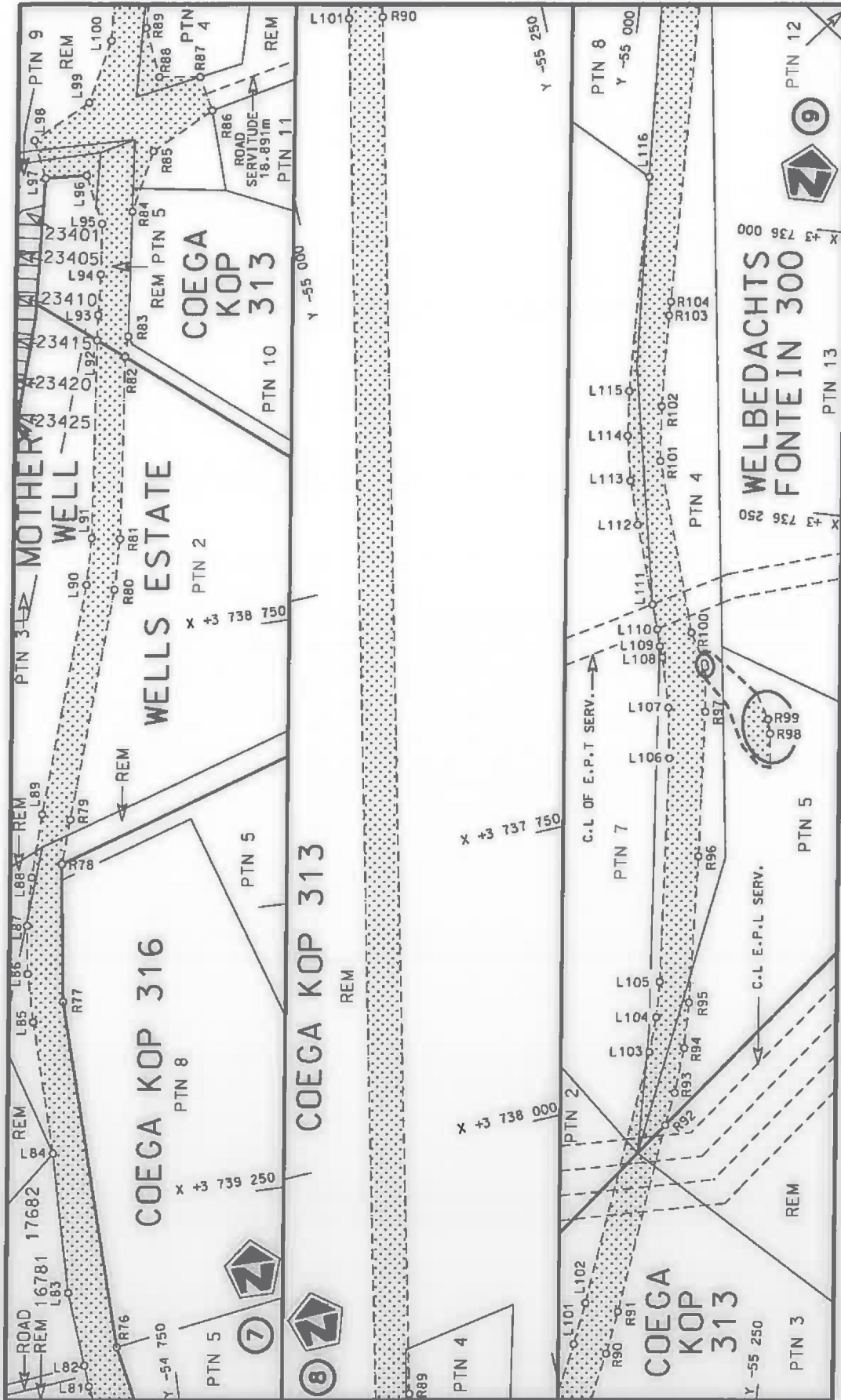
(Nasionale Pad R335 Seksie 1: N2 Aansluiting – R342 Aansluiting)
MINISTER VAN VERVOER



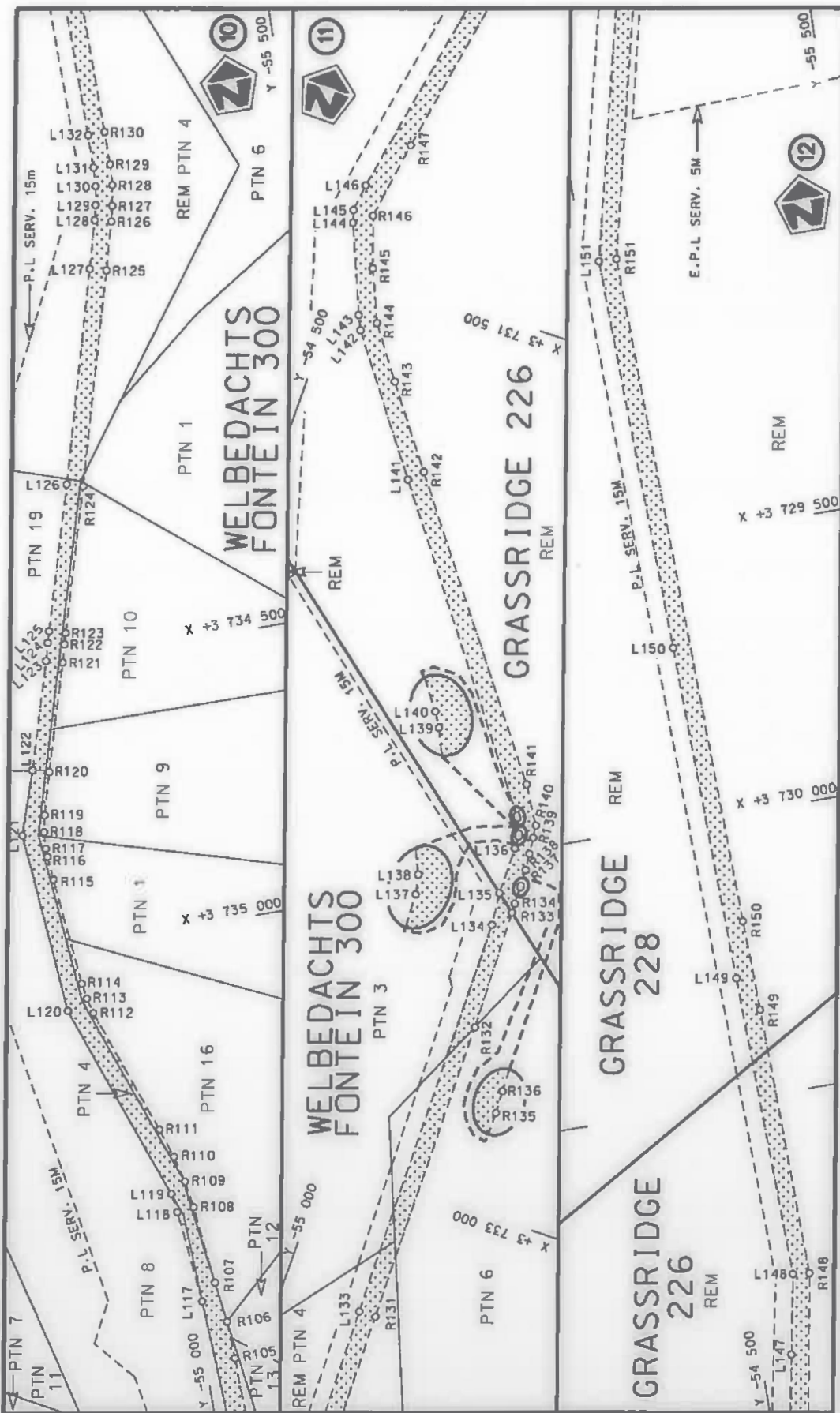
Die Suid Afrikaanse Nasionale Padagentskap Beperk The South African National Roads Agency Limited	Die figuur getoon The figure shown	stelt die padreserwe voor van 'n gedeelte represents the road reserve of a portion van Nasionale Roete R335 of National Route	Vel Sheet 1 of 17
		1	Plan P1054/18

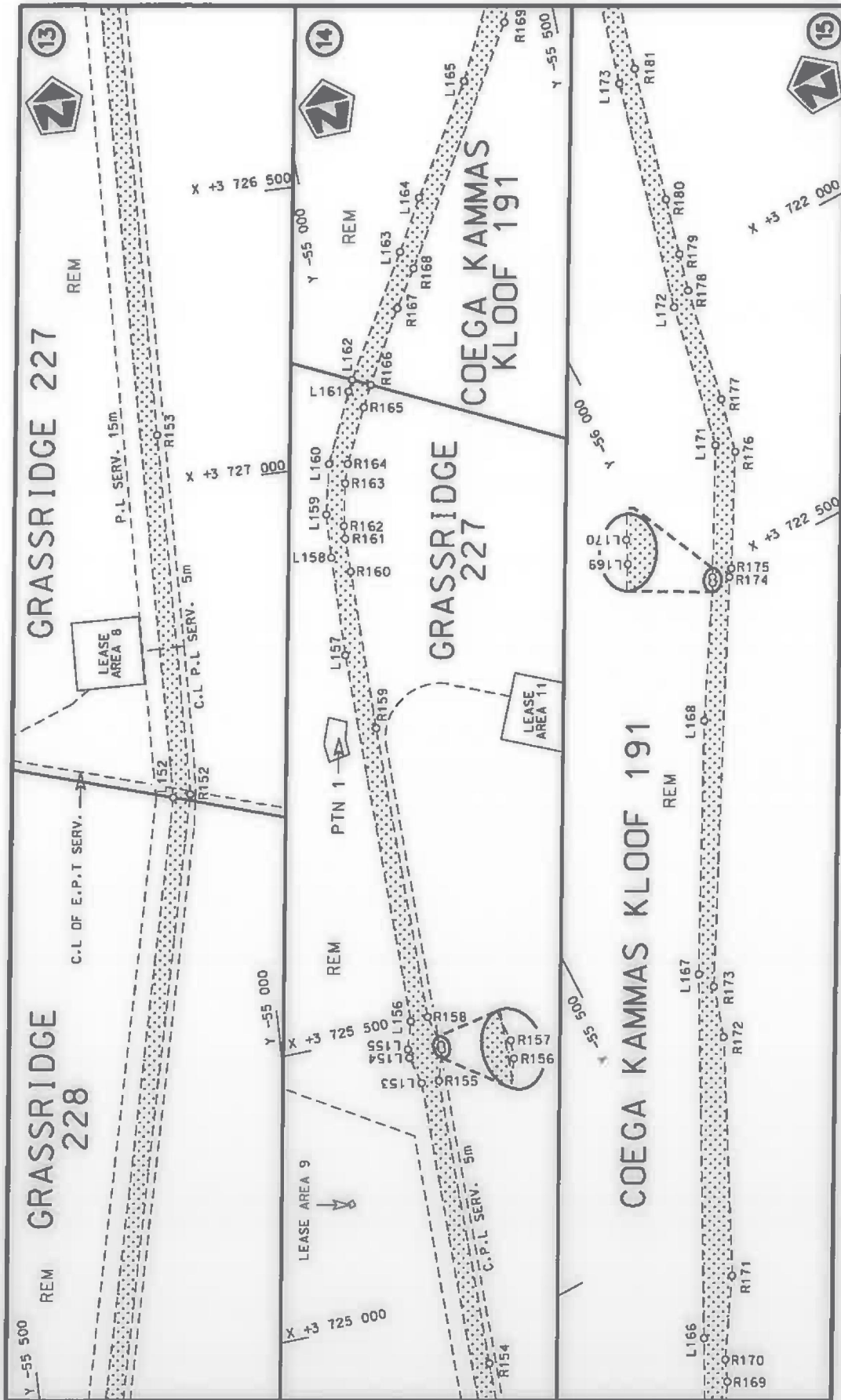


Die Suid Afrikaanse Nasionale Padagentskap Beperk The South African National Roads Agency Limited	Die figuur getoon The figure shown		stedie podreserwe voor van 'n gedeelte represents the road reserve of a portion van Nasionale Roete R335 of National Route R335	Vel Sheet	van of
				Plan	P1054/18

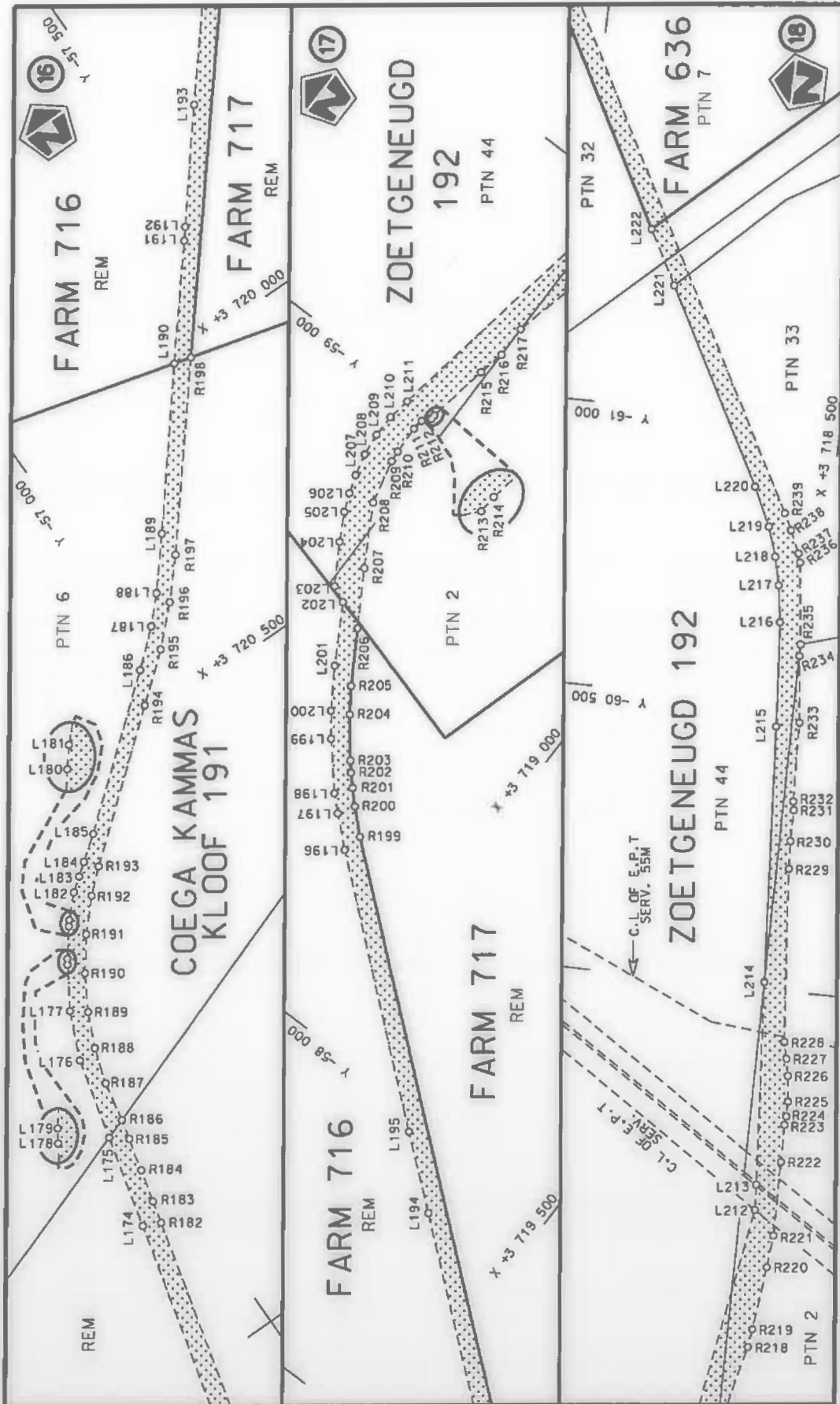


Vel Sheet 3 of 17	steldie padreserwe voor van 'n gedeelte represents the road reserve of a portion van Nasionale Roete R335 of National Route Seksie Section 1	 Die figuur getoon The figure shown	Die Suid Afrikaanse Nasionale Padagentenskap Beperk The South African National Roads Agency Limited
-------------------------	---	---	--

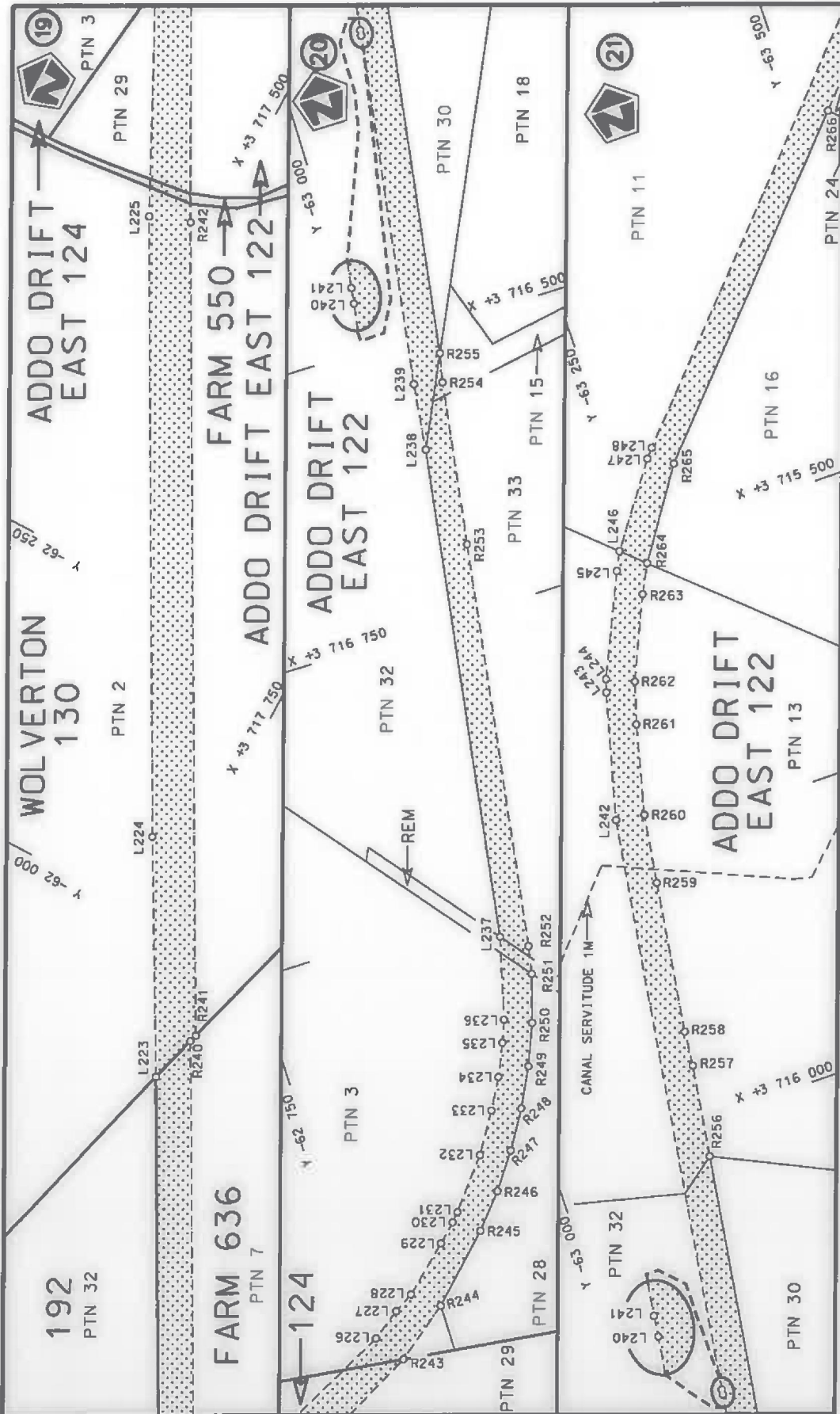




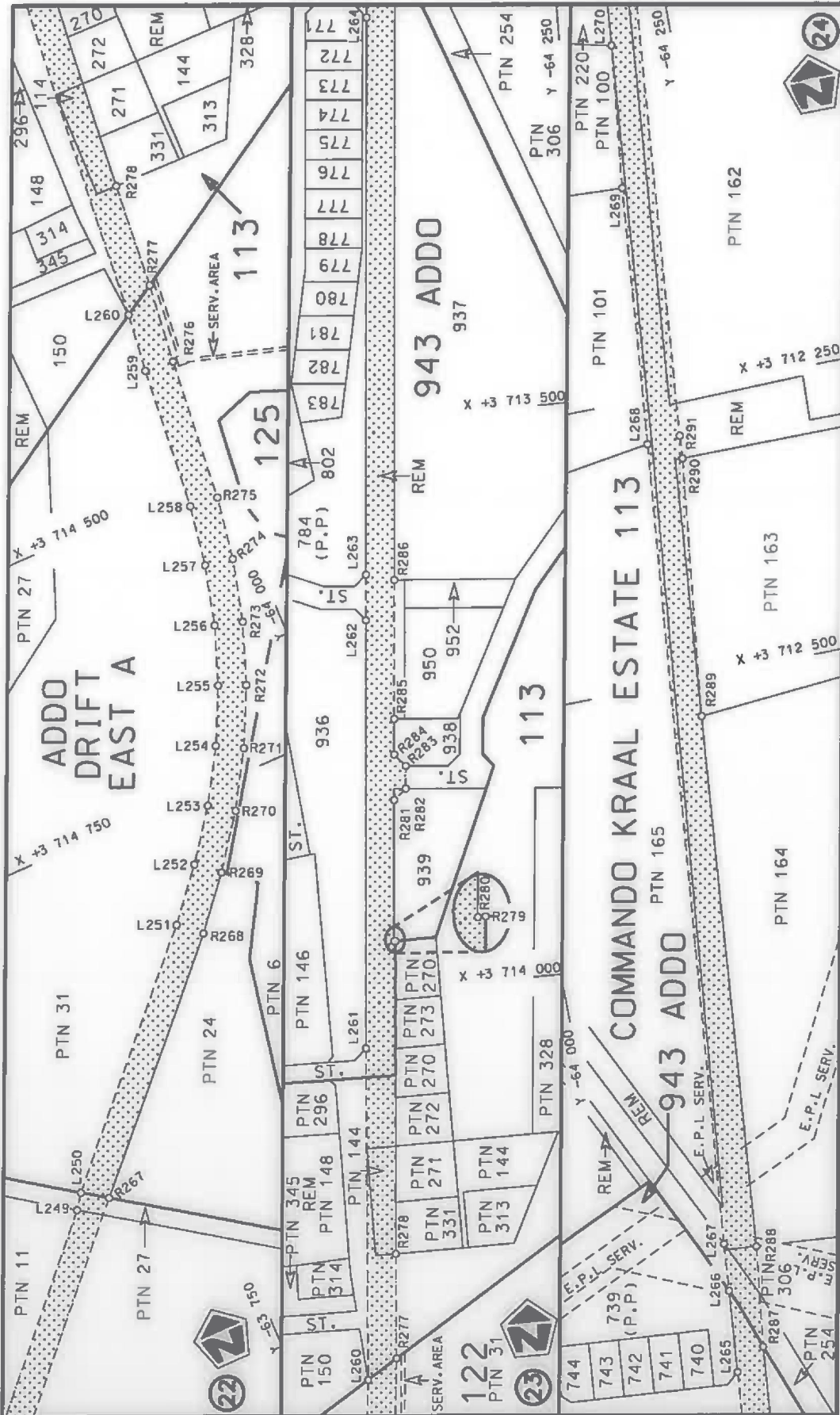
<p>Die Suid Afrikaanse Nasionale Padagentskap Beperk The South African National Roads Agency Limited</p>	<p>Die figuur getoan The figure shown</p>	<p>stel die padreserwe voor van 'n gedeelte represents the road reserve of a portion van Nasionale Roete R335 of National Route</p>	<p>Vel Sheet 5 of 17 Plan P1054/18</p>
--	---	---	--

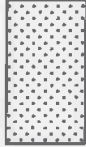


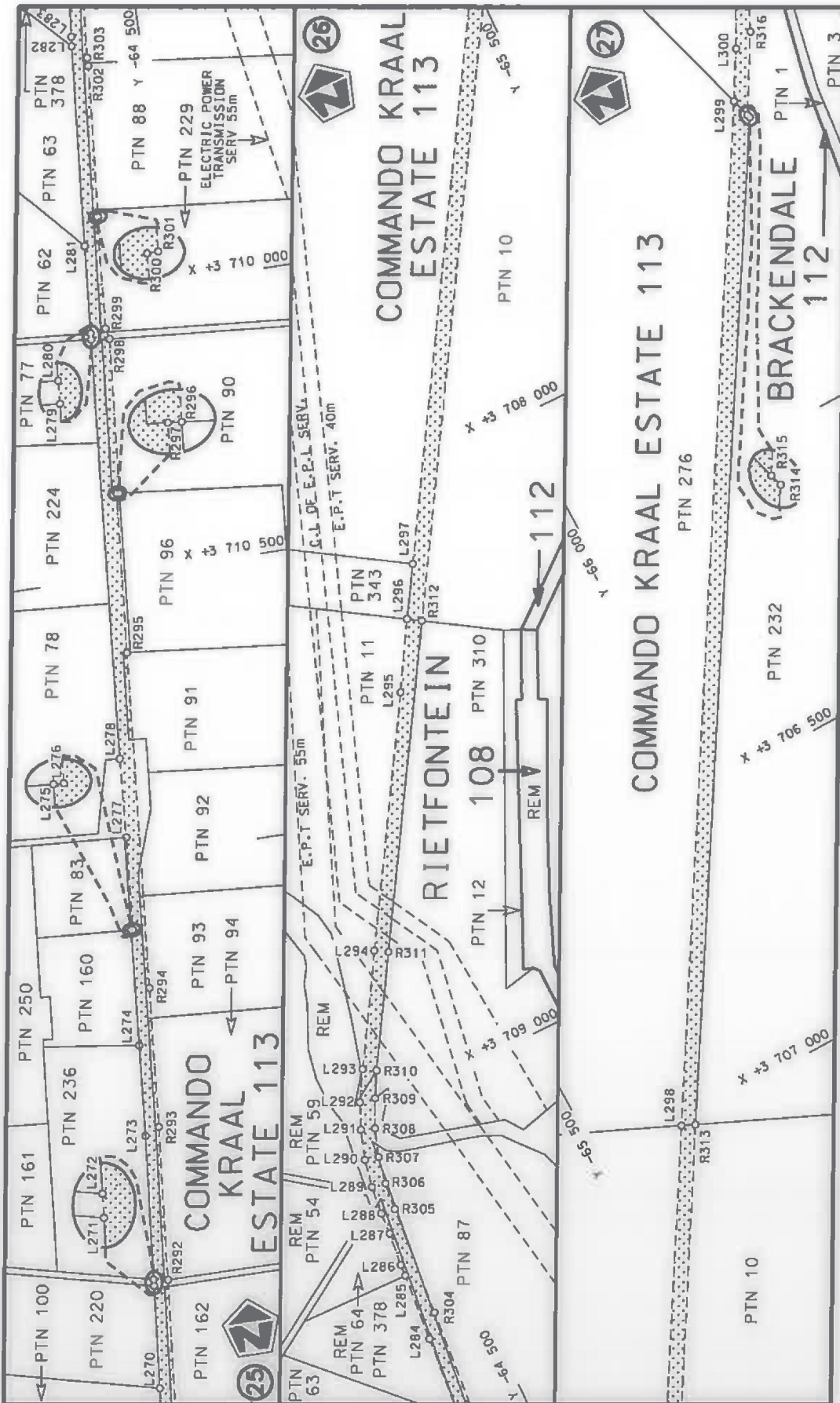
Die Suid Afrikaanse Nasionale Padogenskap Beperk The South African National Roads Agency Limited	Die figuur getoon The figure shown		steldie podreserwe voor van 'n gedeelte represents the road reserve of a portion van Nasionale Roete R335 Sektie of National Route R335 Section	Vel Sheet 6 of 17
				Plan P1054/18



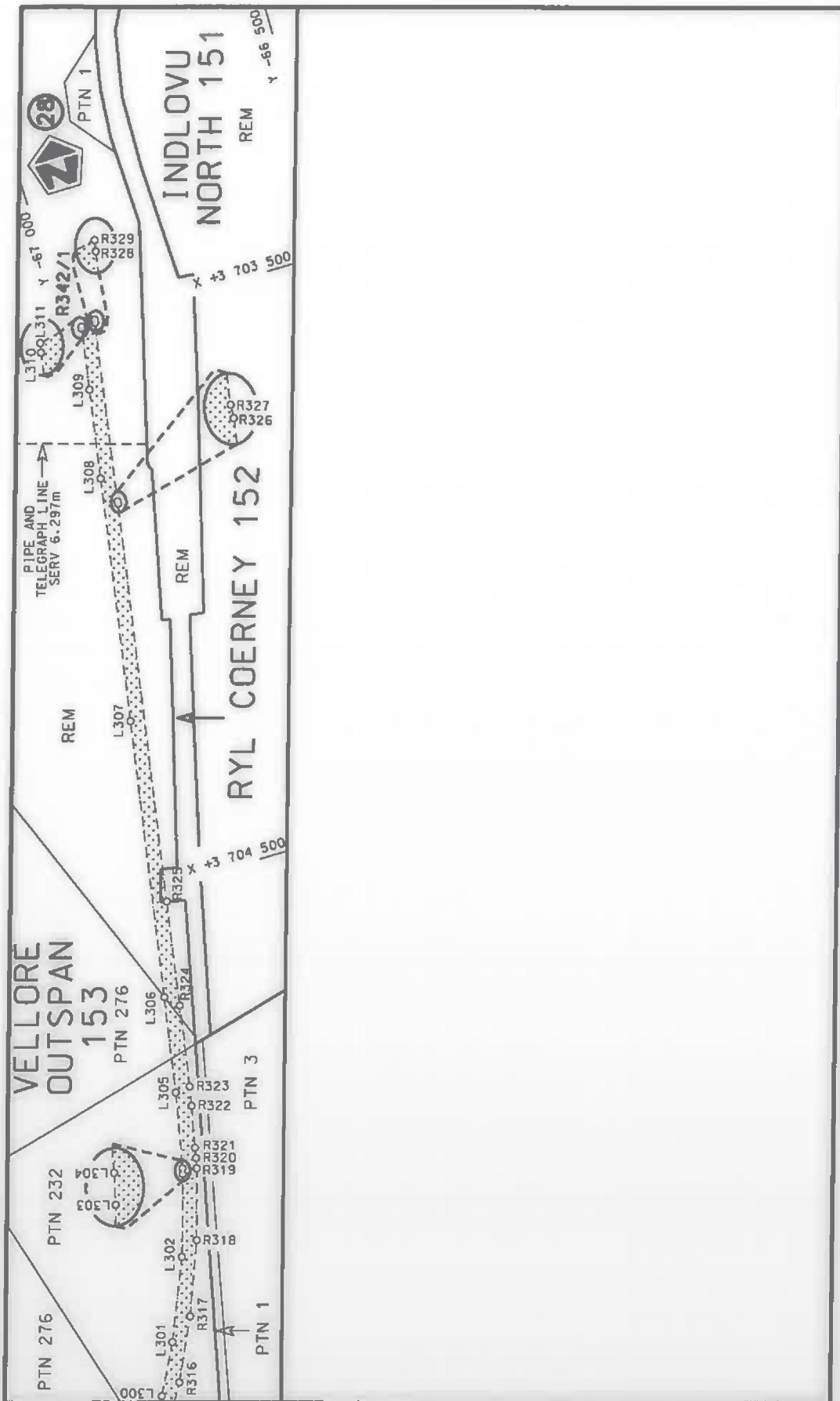
Die Suid Afrikaanse Nasionale Padagentskap Beperk The South African National Roads Agency Limited	Die figuur getoon The figure shown	steldie padreserwe voor van 'n gedeelte represents the road reserve of a portion van Nasionale Roete R335 of National Route R335 Section	Vel Sheet 7 of 17	1	Plan P1054/18
--	---------------------------------------	---	----------------------	---	------------------



Die Suid Afrikaanse Nasionale Padagentskop Beperk The South African National Roads Agency Limited	Die figuur getoon The figure shown		steldie padreserwe voor van 'n gedeelte represents the road reserve of a portion van Nasionale Roete R335 of National Route Section	Vel Sheet 8 of 17
				Plan P1054/18
				1



Die Suid Afrikaanse Nasionale Padagentskop Beperk The South African National Roads Agency Limited	Die figuur getoon The figure shown	steldie padreserwe voor van 'n gedeelte represents the road reserve of a portion van Nasionale Roete R335 Sektie of National Route R335 Section	1	Vel Sheet 9 of 17	Plan P1054/18
--	---------------------------------------	--	---	----------------------	---------------



Vel Sheet 10 of 17
Plan P1054/18

steldie podreserwe voor van 'n gedeelte
represents the road reserve of a portion
van Nasionale Roete R335 Seksie
of National Route Section



Die figuur getoon
The figure shown

Die Suid Afrikaanse Nasionale Padagentskap Beperk
The South African National Roads Agency Limited

PADRESERWE KOÖRDINATE / ROAD RESERVE CO-ORDINATES					
LINKERKANT/LEFT HAND SIDE			REGTERKANT/RIGHT HAND SIDE		
	Y	X	WG 25°	Y	X
L1	-59 612.40	3 744 167.72		R1	-59 616.47 3 744 146.63
L2	-59 711.59	3 744 206.86		R1X	-59 734.36 3 744 181.67
L2X	-59 797.36	3 744 248.23		R2	-59 812.14 3 744 201.37
L3	-59 647.16	3 744 189.35		R2X	-59 813.86 3 744 195.91
L4	-59 594.83	3 744 171.45		R3	-59 753.67 3 744 180.65
L5	-59 389.67	3 744 101.30		R3X	-59 694.34 3 744 153.77
L6	-59 378.57	3 744 104.49		R4	-59 609.90 3 744 129.64
L7	-59 359.22	3 744 098.32		R5	-59 519.91 3 744 098.86
L8	-59 353.72	3 744 089.01		R6	-59 522.75 3 744 090.56
L9	-59 147.70	3 744 018.56		R7	-59 411.27 3 744 052.47
L10	-59 093.89	3 744 000.16		R8	-59 408.21 3 744 045.90
L11	-59 087.51	3 744 003.26		R9	-59 377.76 3 744 036.61
L12	-59 068.59	3 743 996.75		R10	-59 371.86 3 744 039.31
L13	-59 065.52	3 743 990.38		R11	-59 360.70 3 744 036.05
L14	-59 018.19	3 743 973.83		R12	-59 127.25 3 743 955.30
L15	-58 974.39	3 743 956.24		R13	-59 124.21 3 743 949.15
L16	-58 938.15	3 743 936.57		R14	-59 068.00 3 743 929.26
L17	-58 894.72	3 743 910.48		R15	-59 062.21 3 743 932.68
L18	-58 857.01	3 743 883.54		R16	-59 009.17 3 743 913.06
L19	-58 822.67	3 743 854.99		R17	-58 993.05 3 743 905.56
L20	-58 789.58	3 743 823.04		R18	-58 958.98 3 743 887.87
L21	-58 759.47	3 743 789.59		R19	-58 910.55 3 743 857.93
L22	-58 738.90	3 743 765.08		R20	-58 882.02 3 743 835.68
L23	-58 624.72	3 743 601.49		R21	-58 826.73 3 743 786.17
L24	-58 617.76	3 743 600.25		R22	-58 797.73 3 743 754.50
L25	-58 606.05	3 743 583.66		R23	-58 725.15 3 743 656.06
L26	-58 607.28	3 743 576.71		R24	-58 646.08 3 743 543.65
L27	-58 330.90	3 743 176.21		R25	-58 571.06 3 743 426.14
L28	-58 483.31	3 743 400.59		R26	-58 566.35 3 743 417.61
L29	-58 428.89	3 743 321.95		R27	-58 546.67 3 743 387.46
L30	-58 221.34	3 743 019.71		R28	-58 532.62 3 743 365.94
L31	-57 983.95	3 742 680.45		R29	-58 513.46 3 743 336.59
L32	-57 953.18	3 742 636.30		R30	-58 488.96 3 743 307.81
L33	-57 951.18	3 742 636.46		R31	-58 476.08 3 743 292.68
L34	-57 726.19	3 742 314.70		R32	-58 421.72 3 743 219.85
L35	-57 729.58	3 742 310.72		R33	-58 092.20 3 742 748.93
L36	-57 726.91	3 742 306.91		R34	-58 092.58 3 742 743.39
L37	-57 694.43	3 742 267.70		R35	-58 082.65 3 742 724.96
L38	-57 666.19	3 742 263.80		R36	-58 063.84 3 742 723.66
L39	-57 646.53	3 742 238.51		R37	-57 743.76 3 742 265.93
L40	-57 650.32	3 742 210.77		R38	-57 725.96 3 742 242.97
L41	-57 600.90	3 742 150.50		R39	-57 729.12 3 742 221.94
L42	-57 554.39	3 742 102.40		R40	-57 704.23 3 742 190.61
L43	-57 537.62	3 742 086.55		R41	-57 683.06 3 742 187.65
L44	-57 490.48	3 742 065.74		R42	-57 578.97 3 742 053.45
L45	-57 477.51	3 742 084.12		R43	-57 507.99 3 741 980.68
L46	-57 431.77	3 742 071.06		R44	-57 505.81 3 741 924.21
L47	-57 432.17	3 742 015.00		R45	-57 460.18 3 741 914.78
L48	-57 421.06	3 742 000.49		R46	-57 447.14 3 741 936.51
L49	-57 284.44	3 741 891.89		R47	-57 404.00 3 741 922.86

Vel Sheet	11	Van of	17	P1054/18
--------------	----	-----------	----	----------

PADRESERWE KOÖRDINATE / ROAD RESERVE CO-ORDINATES						
LINKERKANT/LEFT HAND SIDE				REGTERKANT/RIGHT HAND SIDE		
	Y	X	WG 25°		Y	X
L50	-57 013.11	3 741	688.69	R48	-57 393.96	3 741 915.32
L51	-56 872.29	3 741	582.21	R49	-56 577.25	3 741 301.73
L52	-56 831.28	3 741	551.69	R50	-56 437.31	3 741 196.65
L53	-56 415.40	3 741	239.11	R51	-56 427.32	3 741 176.65
L54	-56 393.41	3 741	235.09	R52	-56 411.33	3 741 164.64
L55	-56 365.25	3 741	213.55	R53	-56 389.33	3 741 160.63
L56	-56 355.26	3 741	193.53	R54	-56 154.24	3 740 984.09
L57	-56 165.69	3 741	051.76	R55	-55 923.64	3 740 810.94
L58	-56 123.03	3 741	024.40	R56	-55 910.71	3 740 802.02
L59	-56 124.64	3 741	021.27	R57	-55 569.60	3 740 546.72
L60	-55 586.15	3 740	618.35	R58	-55 524.96	3 740 512.97
L61	-55 556.37	3 740	595.56	R59	-55 505.39	3 740 500.08
L62	-55 497.63	3 740	552.22	R60	-55 502.13	3 740 501.47
L63	-55 376.50	3 740	461.34	R61	-55 304.77	3 740 354.08
L64	-55 284.08	3 740	392.00	R62	-55 238.51	3 740 301.57
L65	-55 244.13	3 740	362.02	R63	-55 172.81	3 740 247.36
L66	-55 173.53	3 740	303.42	R64	-55 158.32	3 740 234.04
L67	-55 106.03	3 740	240.42	R65	-55 155.16	3 740 226.81
L68	-55 041.92	3 740	172.82	R66	-55 081.26	3 740 149.94
L69	-54 981.62	3 740	100.42	R67	-55 039.51	3 740 099.55
L70	-54 923.72	3 740	023.32	R68	-54 986.03	3 740 033.85
L71	-54 887.06	3 739	966.04	R69	-54 880.09	3 739 866.89
L72	-54 873.92	3 739	945.52	R70	-54 823.14	3 739 751.54
L73	-54 830.52	3 739	870.62	R71	-54 810.91	3 739 723.02
L74	-54 808.62	3 739	828.02	R72	-54 764.58	3 739 606.87
L75	-54 788.36	3 739	783.67	R73	-54 758.30	3 739 588.23
L76	-54 786.24	3 739	779.02	R74	-54 755.44	3 739 576.16
L77	-54 747.43	3 739	684.10	R75	-54 734.19	3 739 542.10
L78	-54 714.73	3 739	587.57	R76	-54 700.63	3 739 371.46
L79	-54 690.30	3 739	492.18	R77	-54 691.92	3 739 060.30
L80	-54 688.41	3 739	482.87	R78	-54 706.06	3 738 938.73
L81	-54 672.17	3 739	403.10	R79	-54 718.05	3 738 900.40
L82	-54 670.46	3 739	383.97	R80	-54 781.14	3 738 702.84
L83	-54 664.51	3 739	317.78	R81	-54 791.64	3 738 658.72
L84	-54 666.56	3 739	193.12	R82	-54 815.61	3 738 498.96
L85	-54 663.76	3 739	074.71	R83	-54 820.31	3 738 481.34
L86	-54 664.44	3 739	031.77	R84	-54 837.41	3 738 371.93
L87	-54 669.29	3 738	989.10	R85	-54 862.51	3 738 321.26
L88	-54 678.28	3 738	947.11	R86	-54 919.11	3 738 292.36
L89	-54 694.27	3 738	892.68	R87	-54 912.07	3 738 261.45
L90	-54 757.28	3 738	695.38	R88	-54 875.54	3 738 256.72
L91	-54 766.96	3 738	654.75	R89	-54 869.26	3 738 212.00
L92	-54 793.03	3 738	481.01	R90	-55 111.32	3 737 012.43
L93	-54 796.57	3 738	458.96	R91	-55 117.59	3 736 974.10
L94	-54 803.19	3 738	423.49	R92	-55 140.38	3 736 804.67
L95	-54 809.90	3 738	379.11	R93	-55 145.39	3 736 775.27
L96	-54 801.40	3 738	334.89	R94	-55 149.13	3 736 734.82
L97	-54 765.54	3 738	332.61	R95	-55 148.93	3 736 694.20
L98	-54 760.08	3 738	298.05	R96	-55 142.03	3 736 563.95
L99	-54 811.44	3 738	271.06	R97	-55 133.07	3 736 435.71
L100	-54 837.22	3 738	219.10	R98	-55 128.17	3 736 396.44

Vel Sheet	12	Van of	17	P1054/18
-----------	----	--------	----	----------

PADRESERWE KOÖRDINATE / ROAD RESERVE CO-ORDINATES						
LINKERKANT/LEFT HAND SIDE				REGTERKANT/RIGHT HAND SIDE		
	Y	X	WG 25°		Y	X
L101	-55 081.80	3 737	007.03	R99	-55 127.34	3 736 393.12
L102	-55 087.92	3 736	969.67	R100	-55 112.40	3 736 367.32
L103	-55 118.57	3 736	741.79	R101	-55 066.54	3 736 218.88
L104	-55 121.16	3 736	710.32	R102	-55 062.08	3 736 170.65
L105	-55 120.50	3 736	678.74	R103	-55 059.05	3 736 089.76
L106	-55 105.73	3 736	480.30	R104	-55 059.32	3 736 077.46
L107	-55 099.69	3 736	435.67	R105	-55 052.27	3 735 766.21
L108	-55 088.97	3 736	391.92	R106	-55 048.99	3 735 699.74
L109	-55 085.48	3 736	382.45	R107	-55 039.23	3 735 627.97
L110	-55 081.54	3 736	367.58	R108	-55 024.53	3 735 489.97
L111	-55 074.79	3 736	346.26	R109	-55 016.87	3 735 442.38
L112	-55 053.18	3 736	277.43	R110	-55 004.90	3 735 395.68
L113	-55 042.11	3 736	239.16	R111	-54 987.75	3 735 343.61
L114	-55 034.90	3 736	199.98	R112	-54 905.96	3 735 119.85
L115	-55 031.62	3 736	160.27	R113	-54 898.50	3 735 092.70
L116	-55 026.82	3 735	969.76	R114	-54 893.81	3 735 064.95
L117	-55 012.13	3 735	656.75	R115	-54 873.75	3 734 874.76
L118	-54 994.72	3 735	493.33	R116	-54 869.87	3 734 833.31
L119	-54 989.70	3 735	459.73	R117	-54 869.45	3 734 818.74
L120	-54 861.24	3 735	108.02	R118	-54 871.14	3 734 789.02
L121	-54 832.77	3 734	788.54	R119	-54 877.13	3 734 759.87
L122	-54 868.89	3 734	677.74	R120	-54 897.71	3 734 686.04
L123	-54 924.25	3 734	491.61	R121	-54 953.13	3 734 499.75
L124	-54 932.56	3 734	460.42	R122	-54 961.48	3 734 468.42
L125	-54 938.21	3 734	440.76	R123	-54 967.02	3 734 449.12
L126	-55 011.70	3 734	190.60	R124	-55 040.54	3 734 198.88
L127	-55 114.75	3 733	822.88	R125	-55 143.67	3 733 830.87
L128	-55 137.33	3 733	739.99	R126	-55 166.42	3 733 747.33
L129	-55 143.43	3 733	713.81	R127	-55 172.68	3 733 720.47
L130	-55 148.77	3 733	680.96	R128	-55 178.60	3 733 684.18
L131	-55 150.35	3 733	647.70	R129	-55 180.35	3 733 647.45
L132	-55 149.92	3 733	589.87	R130	-55 179.92	3 733 589.53
L133	-55 144.51	3 733	235.19	R131	-55 174.51	3 733 234.77
L134	-55 135.24	3 732	514.50	R132	-55 167.72	3 732 694.68
L135	-55 128.32	3 732	457.25	R133	-55 161.18	3 732 482.87
L136	-55 127.66	3 732	374.38	R134	-55 160.40	3 732 466.25
L137	-55 126.78	3 732	352.47	R135	-55 160.02	3 732 436.03
L138	-55 125.69	3 732	347.59	R136	-55 159.86	3 732 432.76
L139	-55 113.76	3 732	322.92	R137	-55 158.62	3 732 403.80
L140	-55 111.20	3 732	318.74	R138	-55 154.91	3 732 375.04
L141	-54 728.85	3 731	823.59	R139	-55 151.63	3 732 345.96
L142	-54 560.48	3 731	603.35	R140	-55 148.93	3 732 324.09
L143	-54 548.23	3 731	579.15	R141	-55 108.97	3 732 260.99
L144	-54 483.25	3 731	429.43	R142	-54 750.42	3 731 801.68
L145	-54 476.52	3 731	408.06	R143	-54 648.39	3 731 668.36
L146	-54 482.38	3 731	360.14	R144	-54 583.61	3 731 582.13
L147	-54 554.12	3 730	959.64	R145	-54 543.90	3 731 493.37
L148	-54 579.93	3 730	819.65	R146	-54 512.74	3 731 406.01
L149	-54 565.12	3 730	286.36	R147	-54 533.38	3 731 267.42
L150	-54 548.29	3 729	691.04	R148	-54 609.23	3 730 823.16
L151	-54 526.85	3 728	995.12	R149	-54 597.42	3 730 348.46

Vel
Sheet

13

Van
of

17

P1054/18

PADRESERWE KOÖRDINATE / ROAD RESERVE CO-ORDINATES						
LINKERKANT/LEFT HAND SIDE				REGTERKANT/RIGHT HAND SIDE		
	Y	X	WG 25°		Y	X
L152	-54 859.47	3 727	550.36	R150	-54 592.48	3 730 188.64
L153	-54 902.12	3 725	596.59	R151	-54 558.30	3 728 996.56
L154	-54 889.61	3 725	548.11	R152	-54 890.18	3 727 548.39
L155	-54 889.89	3 725	533.11	R153	-54 903.54	3 726 906.81
L156	-54 904.57	3 725	484.75	R154	-54 922.29	3 726 110.97
L157	-54 918.55	3 724	822.41	R155	-54 932.69	3 725 599.14
L158	-54 927.88	3 724	647.70	R156	-54 948.56	3 725 545.65
L159	-54 933.96	3 724	570.67	R157	-54 948.75	3 725 536.88
L160	-54 956.32	3 724	483.44	R158	-54 935.23	3 725 483.28
L161	-55 015.09	3 724	364.33	R159	-54 946.03	3 724 961.20
L162	-55 024.98	3 724	345.26	R160	-54 956.64	3 724 678.86
L163	-55 151.34	3 724	139.59	R161	-54 958.47	3 724 619.33
L164	-55 202.89	3 724	051.96	R162	-54 960.45	3 724 597.16
L165	-55 320.37	3 723	865.13	R163	-54 977.30	3 724 522.99
L166	-55 409.86	3 723	689.34	R164	-54 988.39	3 724 490.05
L167	-55 701.37	3 723	110.57	R165	-55 035.75	3 724 397.18
L168	-55 918.44	3 722	715.11	R166	-55 055.07	3 724 360.63
L169	-56 044.58	3 722	505.08	R167	-55 127.28	3 724 236.42
L170	-56 048.95	3 722	495.19	R168	-55 168.97	3 724 173.02
L171	-56 161.75	3 722	289.93	R169	-55 410.37	3 723 777.57
L172	-56 210.26	3 722	038.44	R170	-55 425.35	3 723 740.91
L173	-56 307.51	3 721	640.37	R171	-55 505.21	3 723 614.16
L174	-56 410.75	3 721	229.69	R172	-55 688.75	3 723 230.29
L175	-56 451.17	3 721	066.71	R173	-55 714.51	3 723 142.71
L176	-56 486.74	3 720	924.14	R174	-56 075.67	3 722 509.27
L177	-56 521.93	3 720	841.95	R175	-56 085.62	3 722 497.59
L178	-56 564.99	3 720	771.87	R176	-56 187.38	3 722 316.93
L179	-56 570.85	3 720	762.81	R177	-56 208.63	3 722 222.58
L180	-56 605.42	3 720	717.27	R178	-56 245.59	3 722 023.70
L181	-56 612.63	3 720	708.22	R179	-56 261.83	3 721 958.96
L182	-56 646.68	3 720	672.81	R180	-56 285.93	3 721 861.63
L183	-56 670.68	3 720	655.03	R181	-56 343.79	3 721 629.93
L184	-56 692.08	3 720	638.53	R182	-56 440.47	3 721 243.58
L185	-56 733.94	3 720	607.22	R183	-56 449.99	3 721 204.01
L186	-56 965.98	3 720	416.10	R184	-56 464.63	3 721 146.71
L187	-57 025.62	3 720	363.63	R185	-56 479.06	3 721 088.90
L188	-57 066.56	3 720	320.51	R186	-56 487.18	3 721 053.96
L189	-57 134.18	3 720	238.97	R187	-56 500.84	3 720 983.87
L190	-57 322.73	3 720	003.74	R188	-56 520.86	3 720 921.67
L191	-57 459.82	3 719	834.99	R189	-56 547.37	3 720 861.83
L192	-57 475.28	3 719	815.61	R190	-56 581.64	3 720 802.07
L193	-57 610.70	3 719	647.24	R191	-56 622.48	3 720 746.58
L194	-57 871.66	3 719	325.56	R192	-56 669.36	3 720 696.09
L195	-57 964.67	3 719	209.41	R193	-56 708.98	3 720 660.26
L196	-58 290.26	3 718	812.34	R194	-56 937.26	3 720 472.19
L197	-58 333.92	3 718	762.95	R195	-57 016.44	3 720 406.60
L198	-58 358.54	3 718	736.35	R196	-57 077.00	3 720 347.34
L199	-58 431.20	3 718	672.42	R197	-57 132.79	3 720 283.80
L200	-58 470.32	3 718	641.84	R198	-57 353.21	3 720 012.02
L201	-58 537.46	3 718	598.16	R199	-58 325.07	3 718 819.74
L202	-58 635.00	3 718	540.60	R200	-58 361.90	3 718 779.34

Vel
Sheet

14

Van
of

17

P1054/18

PADRESERWE KOÖRDINATE / ROAD RESERVE CO-ORDINATES					
LINKERKANT/LEFT HAND SIDE			REGTERKANT/RIGHT HAND SIDE		
	Y	X	WG 25°	Y	X
L203	-58 648.20	3 718	511.68	R201	-58 385.57 3 718 755.99
L204	-58 715.77	3 718	470.46	R202	-58 405.25 3 718 737.22
L205	-58 762.74	3 718	444.44	R203	-58 421.20 3 718 723.23
L206	-58 793.96	3 718	431.26	R204	-58 485.06 3 718 672.19
L207	-58 826.07	3 718	420.43	R205	-58 526.40 3 718 643.14
L208	-58 864.94	3 718	410.60	R206	-58 613.82 3 718 589.72
L209	-58 904.78	3 718	406.05	R207	-58 705.53 3 718 533.92
L210	-58 944.87	3 718	406.86	R208	-58 806.53 3 718 474.95
L211	-58 984.49	3 718	413.01	R209	-58 884.39 3 718 456.64
L212	-59 608.79	3 718	514.94	R210	-58 904.14 3 718 454.17
L213	-59 653.83	3 718	512.05	R211	-58 953.59 3 718 452.71
L214	-60 011.83	3 718	484.14	R212	-58 972.77 3 718 455.15
L215	-60 463.83	3 718	451.01	R213	-58 985.80 3 718 466.31
L216	-60 647.72	3 718	435.55	R214	-58 994.14 3 718 466.82
L217	-60 712.34	3 718	425.42	R215	-59 104.44 3 718 485.46
L218	-60 761.91	3 718	413.28	R216	-59 150.11 3 718 495.14
L219	-60 813.97	3 718	395.97	R217	-59 206.33 3 718 494.42
L220	-60 881.62	3 718	362.92	R218	-59 366.12 3 718 531.04
L221	-61 218.73	3 718	176.42	R219	-59 397.98 3 718 535.45
L222	-61 313.34	3 718	124.07	R220	-59 510.30 3 718 548.37
L223	-61 880.11	3 717	811.40	R221	-59 567.01 3 718 553.37
L224	-62 064.34	3 717	707.82	R222	-59 698.38 3 718 551.13
L225	-62 541.53	3 717	444.50	R223	-59 764.23 3 718 549.42
L226	-62 756.75	3 717	334.53	R224	-59 779.78 3 718 550.95
L227	-62 780.74	3 717	317.04	R225	-59 806.26 3 718 550.95
L228	-62 797.54	3 717	306.90	R226	-59 851.23 3 718 545.29
L229	-62 835.83	3 717	271.85	R227	-59 881.33 3 718 539.10
L230	-62 851.00	3 717	257.23	R228	-59 910.37 3 718 531.76
L231	-62 857.76	3 717	249.77	R229	-60 215.81 3 718 503.38
L232	-62 891.45	3 717	207.61	R230	-60 264.87 3 718 500.40
L233	-62 912.54	3 717	173.16	R231	-60 320.08 3 718 499.75
L234	-62 927.09	3 717	146.84	R232	-60 335.29 3 718 496.91
L235	-62 939.28	3 717	119.09	R233	-60 474.91 3 718 491.11
L236	-62 946.62	3 717	100.10	R234	-60 592.06 3 718 476.77
L237	-62 964.49	3 717	029.11	R235	-60 612.64 3 718 476.50
L238	-63 026.89	3 716	599.84	R236	-60 756.61 3 718 458.31
L239	-63 033.43	3 716	541.66	R237	-60 772.46 3 718 453.58
L240	-63 077.86	3 716	234.82	R238	-60 811.67 3 718 435.70
L241	-63 078.43	3 716	230.21	R239	-60 840.70 3 718 421.23
L242	-63 151.85	3 715	724.71	R240	-61 921.99 3 717 823.45
L243	-63 179.61	3 715	615.65	R241	-61 928.61 3 717 825.36
L244	-63 183.10	3 715	604.41	R242	-62 554.12 3 717 479.56
L245	-63 222.67	3 715	517.38	R243	-62 774.50 3 717 359.43
L246	-63 230.39	3 715	501.71	R244	-62 819.71 3 717 324.15
L247	-63 279.70	3 715	432.89	R245	-62 872.43 3 717 271.57
L248	-63 286.39	3 715	425.02	R246	-62 896.82 3 717 242.64
L249	-63 632.69	3 715	045.30	R247	-62 918.62 3 717 212.06
L250	-63 641.71	3 715	032.57	R248	-62 938.36 3 717 179.46
L251	-63 810.04	3 714	849.38	R249	-62 955.18 3 717 145.75
L252	-63 845.28	3 714	806.92	R250	-62 969.49 3 717 110.36
L253	-63 876.46	3 714	764.08	R251	-62 981.79 3 717 068.91

Vel
Sheet

15

Van
of

17

P1054/18

PADRESERWE KOÖRDINATE / ROAD RESERVE CO-ORDINATES						
LINKERKANT/LEFT HAND SIDE				REGTERKANT/RIGHT HAND SIDE		
	Y	X	WG 25°		Y	X
L254	-63 903.46	3 714	718.48	R252	-62 986.09	3 717 044.77
L255	-63 926.03	3 714	670.53	R253	-63 037.26	3 716 690.31
L256	-63 943.97	3 714	620.66	R254	-63 057.98	3 716 547.70
L257	-63 956.94	3 714	568.68	R255	-63 063.30	3 716 522.58
L258	-63 965.15	3 714	515.74	R256	-63 134.57	3 716 032.16
L259	-63 976.04	3 714	390.49	R257	-63 146.25	3 715 951.64
L260	-63 982.02	3 714	339.46	R258	-63 148.99	3 715 920.97
L261	-64 005.51	3 714	048.50	R259	-63 167.96	3 715 788.85
L262	-64 037.83	3 713	673.47	R260	-63 176.91	3 715 728.74
L263	-64 041.26	3 713	633.61	R261	-63 195.66	3 715 651.02
L264	-64 083.23	3 713	146.61	R262	-63 206.47	3 715 614.72
L265	-64 086.66	3 713	106.76	R263	-63 237.70	3 715 544.28
L266	-64 092.84	3 713	035.03	R264	-63 250.26	3 715 519.92
L267	-64 096.29	3 712	993.61	R265	-63 300.07	3 715 444.64
L268	-64 162.53	3 712	289.60	R266	-63 526.98	3 715 195.62
L269	-64 182.66	3 712	064.50	R267	-63 662.54	3 715 046.84
L270	-64 196.76	3 711	939.89	R268	-63 828.87	3 714 865.83
L271	-64 212.58	3 711	758.43	R269	-63 864.51	3 714 822.89
L272	-64 213.56	3 711	747.01	R270	-63 897.18	3 714 778.07
L273	-64 235.67	3 711	491.97	R271	-63 925.46	3 714 730.36
L274	-64 247.55	3 711	331.58	R272	-63 949.09	3 714 680.19
L275	-64 262.50	3 711	126.47	R273	-63 967.93	3 714 627.81
L276	-64 265.55	3 711	126.68	R274	-63 981.47	3 714 573.49
L277	-64 277.70	3 710	962.34	R275	-63 990.03	3 714 518.18
L278	-64 286.02	3 710	822.33	R276	-64 000.94	3 714 392.67
L279	-64 340.96	3 710	078.60	R277	-64 008.70	3 714 322.99
L280	-64 341.60	3 710	067.70	R278	-64 016.12	3 714 231.15
L281	-64 353.19	3 709	913.07	R279	-64 039.64	3 713 956.91
L282	-64 379.38	3 709	559.45	R280	-64 038.50	3 713 956.91
L283	-64 381.08	3 709	542.82	R281	-64 049.16	3 713 833.27
L284	-64 392.09	3 709	407.24	R282	-64 059.97	3 713 824.22
L285	-64 402.03	3 709	286.95	R283	-64 061.69	3 713 804.30
L286	-64 402.86	3 709	266.36	R284	-64 052.59	3 713 793.43
L287	-64 409.15	3 709	207.16	R285	-64 055.27	3 713 762.31
L288	-64 411.43	3 709	168.31	R286	-64 065.75	3 713 640.72
L289	-64 416.51	3 709	118.54	R287	-64 113.26	3 713 089.32
L290	-64 426.16	3 709	069.45	R288	-64 124.03	3 713 001.23
L291	-64 443.03	3 709	018.15	R289	-64 164.39	3 712 533.74
L292	-64 462.47	3 708	973.56	R290	-64 190.33	3 712 307.86
L293	-64 492.38	3 708	922.24	R291	-64 191.73	3 712 287.84
L294	-64 602.07	3 708	741.61	R292	-64 239.10	3 711 751.52
L295	-64 841.60	3 708	348.40	R293	-64 261.56	3 711 480.23
L296	-64 908.10	3 708	236.38	R294	-64 280.16	3 711 233.10
L297	-64 959.09	3 708	152.32	R295	-64 325.36	3 710 637.97
L298	-65 656.37	3 707	004.12	R296	-64 346.92	3 710 355.09
L299	-66 599.78	3 705	449.29	R297	-64 351.75	3 710 355.59
L300	-66 647.08	3 705	369.08	R298	-64 373.17	3 710 082.33
L301	-66 691.71	3 705	282.19	R299	-64 368.74	3 710 063.15
L302	-66 749.83	3 705	141.30	R300	-64 381.47	3 709 864.51
L303	-66 791.99	3 704	999.83	R301	-64 383.83	3 709 864.45
L304	-66 794.33	3 704	989.91	R302	-64 403.88	3 709 598.36

Vel
Sheet

16

Van

of

17

P1054/18

PADRESERWE KOÖRDINATE / ROAD RESERVE CO-ORDINATES					
LINKERKANT/LEFT HAND SIDE			REGTERKANT/RIGHT HAND SIDE		
	Y	X	WG 25°	Y	X
L305	-66 819.77	3 704 856.91	R303	-64 404.04	3 709 583.66
L306	-66 846.84	3 704 687.60	R304	-64 420.17	3 709 369.03
L307	-66 923.69	3 704 198.41	R305	-64 436.22	3 709 171.86
L308	-66 991.24	3 703 768.80	R306	-64 441.06	3 709 123.46
L309	-67 015.20	3 703 611.42	R307	-64 450.36	3 709 075.70
L310	-67 031.54	3 703 503.10	R308	-64 466.46	3 709 026.86
L311	-67 032.14	3 703 500.17	R309	-64 490.03	3 708 978.87
			R310	-64 513.52	3 708 935.59
			R311	-64 623.43	3 708 754.60
			R312	-64 930.40	3 708 250.70
			R313	-65 678.94	3 707 014.50
			R314	-66 611.05	3 705 488.02
			R315	-66 609.31	3 705 482.04
			R316	-66 683.62	3 705 354.74
			R317	-66 734.84	3 705 247.17
			R318	-66 783.58	3 705 119.99
			R319	-66 818.78	3 704 997.37
			R320	-66 822.62	3 704 979.28
			R321	-66 825.90	3 704 961.09
			R322	-66 840.55	3 704 887.63
			R323	-66 846.72	3 704 853.73
			R324	-66 869.08	3 704 710.13
			R325	-66 897.81	3 704 525.41
			R326	-67 008.31	3 703 820.79
			R327	-67 008.54	3 703 816.43
			R328	-67 057.28	3 703 499.82
			R329	-67 058.23	3 703 494.46

Vel	17	Van	17	P1054/18
Sheet		of		