

DEPARTMENT OF TRANSPORT

NO. 424

15 MARCH 2019

**THE SOUTH AFRICAN NATIONAL ROADS
AGENCY SOC LIMITED**

Registration No: 1998/009584/30

DECLARATION AMENDMENT OF NATIONAL ROAD R581 SECTION 2

AMENDMENT OF DECLARATION No. 244 OF 2018.

By virtue of section 40(1)(b) of the South African National Roads Agency Limited and the National Roads Act 1998 (Act No. 7 of 1998), I hereby amend Declaration No. 244 of 2018 by substituting it in its entirety, with the accompanying sheets 1 to 3 of Plan No. P1072/18.

(National Road R581 Section 2: Tonga – Rusplek (R571/1))

MINISTER OF TRANSPORT

DEPARTEMENT VAN VERVOER

NO. 424

15 MAART 2019

**DIE SUID-AFRIKAANSE NASIONALE
PADAGENTSKAP MSB BEPERK**

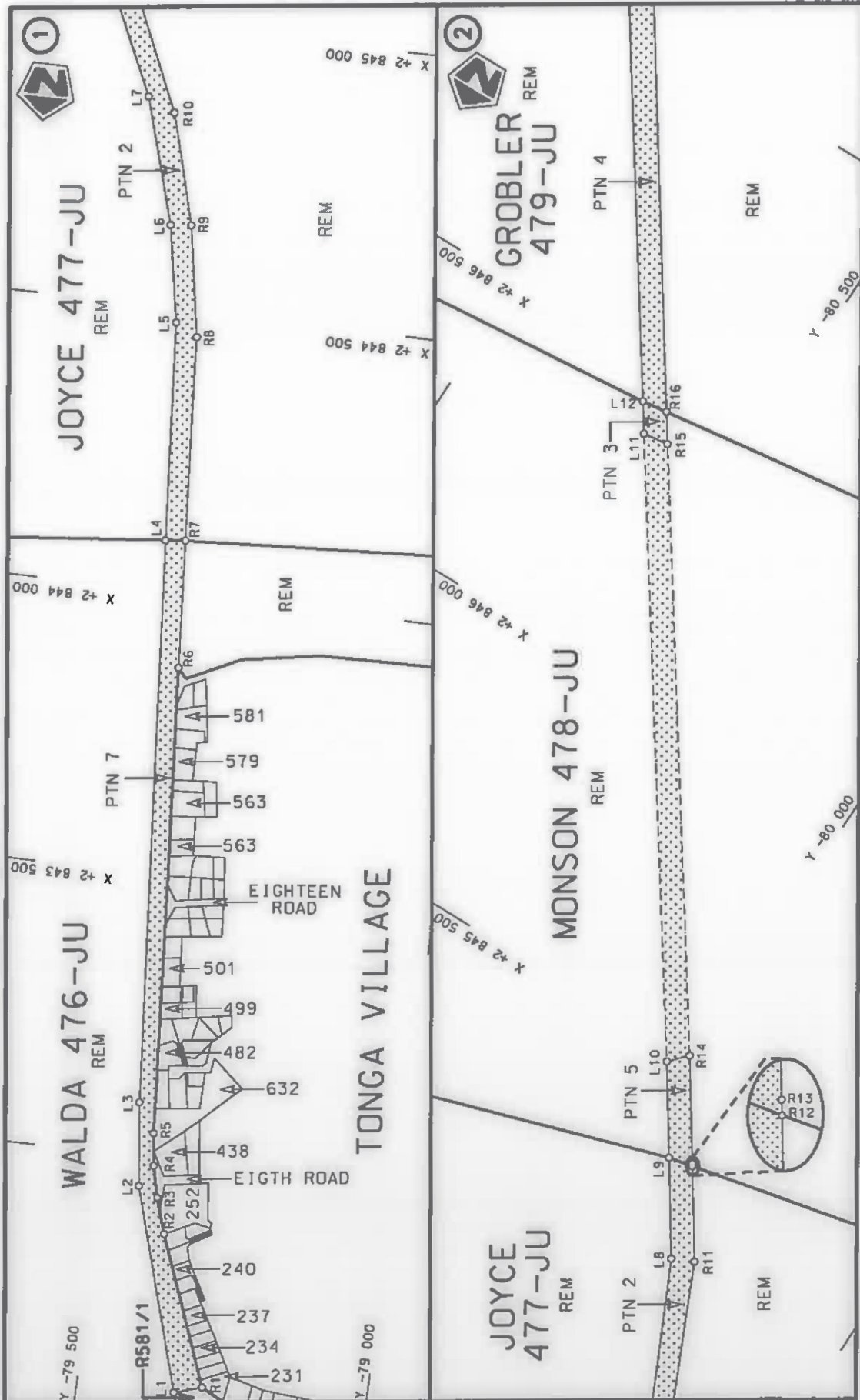
Registrasie No: 1998/009584/30

VERKLARING WYSIGING VAN NASIONALE PAD R581 SEKSIE 2

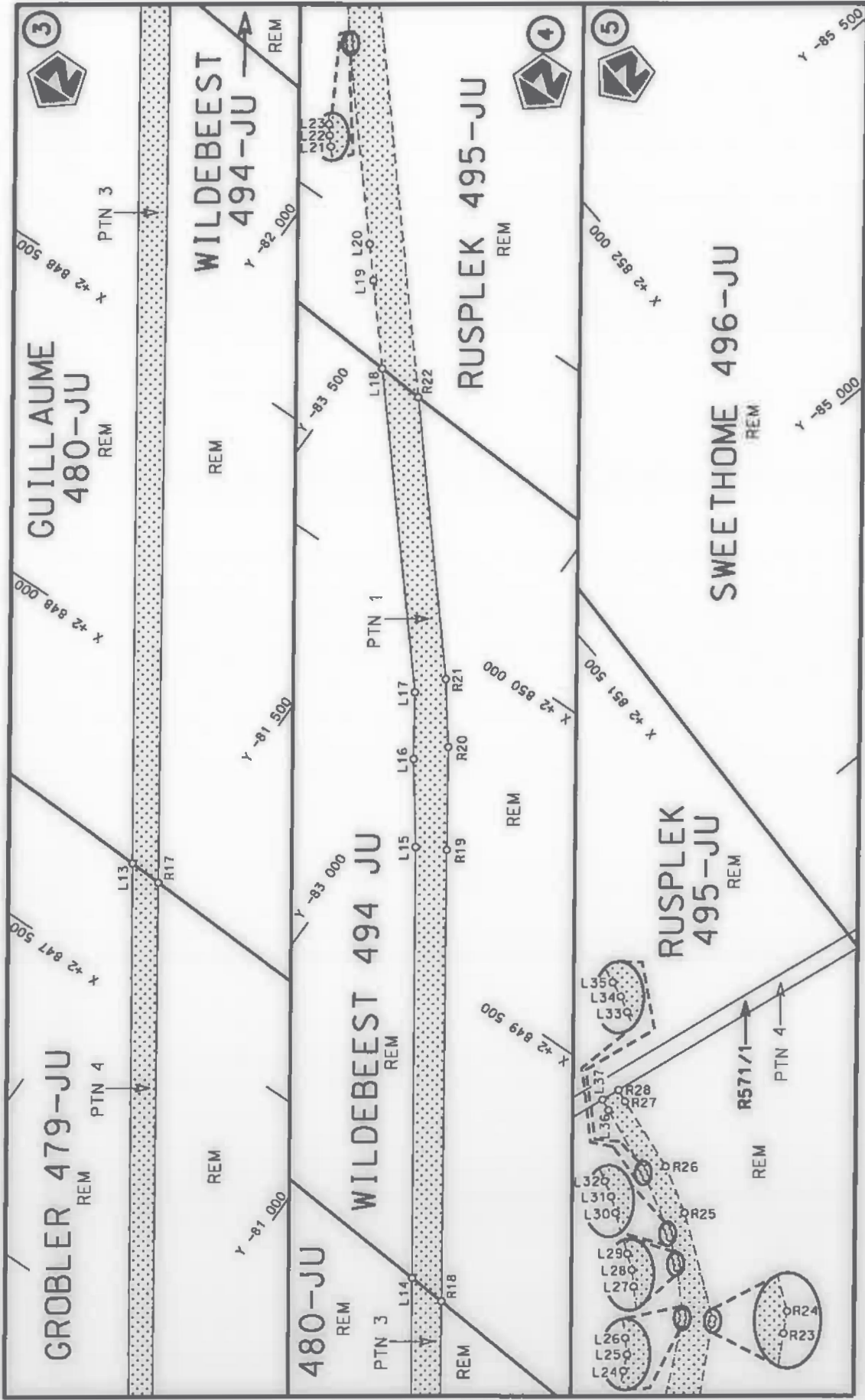
WYSIGING VAN VERKLARING No. 342 VAN 2016.

Kragtens Artikel 40(1)(b) van die Suid-Afrikaanse Nasionale Padagentskap Beperk en Nasionale Paaie Wet 1998 (Wet No. 7 van 1998), wysig ek hiermee Verklaring No. 244 van 2018 deur dit in sy geheel te vervang, met bygaande velle 1 tot 3 van Plan No. P1072/18.

(Nasionale Pad R581 Seksie 2: Tonga – Rusplek (R571/1))**MINISTER VAN VERVOER**



<p>Die Suid Afrikaanse Nasionale Podagentakop MSB Bpk The South African National Roads Agency SOC Ltd</p>	<p>Die figuur getoon The figure shown</p>	<p>stel die podreserwe voor van 'n gedeelte represents the road reserve of a portion van Nasionale Roete R581 Sektie of National Route Section</p>	<p>Vel Sheet 1 of 3 Plan P1072/18</p>
---	---	--	---



<p>Die Suid Afrikaanse Nasionale Padagentskap MSB Bpk The South African National Roads Agency SOC Ltd</p>	<p>Die figuur getoon The figure shown</p>	<p>steldie padreserwe voor van 'n gedeelte represents the road reserve of a portion van Nasionale Roete R581 of National Route</p>	<p>Vel Sheet 2 of 3</p>	<p>2</p>	<p>Seksie Section</p>
		<p>R581</p>			<p>P1072/18</p>

PADRESERWE KOÖRDINATE / ROAD RESERVE CO-ORDINATES									
LINKERKANT/LEFT HAND SIDE					REGTERKANT/RIGHT HAND SIDE				
	Y	X	WG 31°		Y	X			
L1	-79 331.39	2 842 591.85		R1	-79 283.73	2 842 606.33			
L2	-79 439.91	2 842 949.04		R2	-79 385.16	2 842 868.94			
L3	-79 458.39	2 843 096.50		R3	-79 405.46	2 842 931.59			
L4	-79 547.60	2 844 091.52		R4	-79 419.00	2 842 987.30			
L5	-79 582.10	2 844 476.30		R5	-79 426.89	2 843 044.61			
L6	-79 614.84	2 844 646.42		R6	-79 495.52	2 843 869.85			
L7	-79 683.20	2 844 867.56		R7	-79 513.74	2 844 094.76			
L8	-79 834.96	2 845 186.72		R8	-79 542.93	2 844 455.05			
L9	-79 935.39	2 845 335.80		R9	-79 578.90	2 844 650.20			
L10	-80 031.03	2 845 477.76		R10	-79 635.41	2 844 844.41			
L11	-80 667.27	2 846 395.16		R11	-79 798.69	2 845 203.02			
L12	-80 699.94	2 846 442.23		R12	-79 893.55	2 845 343.94			
L13	-81 567.64	2 847 692.60		R13	-79 896.14	2 845 347.79			
L14	-82 486.21	2 849 016.27		R14	-80 003.47	2 845 507.25			
L15	-82 924.37	2 849 647.67		R15	-80 623.54	2 846 400.96			
L16	-83 018.00	2 849 773.60		R16	-80 655.97	2 846 448.07			
L17	-83 084.58	2 849 872.10		R17	-81 511.14	2 847 690.07			
L18	-83 464.32	2 850 310.26		R18	-82 420.62	2 849 010.96			
L19	-83 567.65	2 850 429.49		R19	-82 877.28	2 849 674.18			
L20	-83 610.22	2 850 478.61		R20	-82 980.71	2 849 825.23			
L21	-83 839.37	2 850 743.02		R21	-83 054.21	2 849 921.63			
L22	-83 845.92	2 850 750.58		R22	-83 383.57	2 850 303.94			
L23	-83 852.03	2 850 758.49		R23	-83 886.65	2 850 887.91			
L24	-83 921.57	2 850 848.67		R24	-83 893.18	2 850 895.49			
L25	-83 927.68	2 850 856.58		R25	-84 069.72	2 850 979.38			
L26	-83 936.02	2 850 862.11		R26	-84 154.74	2 851 007.38			
L27	-84 002.88	2 850 906.43		R27	-84 289.31	2 851 028.31			
L28	-84 011.21	2 850 911.96		R28	-84 312.21	2 851 032.62			
L29	-84 020.24	2 850 916.24							
L30	-84 052.56	2 850 931.58							
L31	-84 061.59	2 850 935.87							
L32	-84 071.10	2 850 938.97							
L33	-84 161.04	2 850 968.34							
L34	-84 170.55	2 850 971.44							
L35	-84 180.03	2 850 973.33							
L36	-84 296.19	2 850 996.47							
L37	-84 317.17	2 851 000.65							

Vel Sheet	3 of	Van of	3 of	P1072/18
--------------	---------	-----------	---------	----------