

DEPARTMENT OF TRANSPORT

NO. 423

15 MARCH 2019

**THE SOUTH AFRICAN NATIONAL ROADS
AGENCY SOC LIMITED**

Registration No: 1998/009584/30

DECLARATION AMENDMENT OF NATIONAL ROAD R501 SECTION 3

AMENDMENT OF DECLARATION No. 305 OF 2018.

By virtue of section 40(1)(b) of the South African National Roads Agency Limited and the National Roads Act 1998 (Act No. 7 of 1998), I hereby amend Declaration No. 305 of 2018 by substituting paragraph B(II) and (III) of the Schedule, being the descriptive declaration of the route from a point in line with the northern boundary of the surveyed erven north of Potchefstroom at time of declaration, up to the general boundary between the farms Driefontein 355-IQ and Uitval 280-IQ, with the accompanying sheets 1 to 17 of Plan No. P1056/18.

(National Road R501 Section 3: Potchefstroom – Driefontein)



MINISTER OF TRANSPORT

DEPARTEMENT VAN VERVOER

NO. 423

15 MAART 2019

**DIE SUID-AFRIKAANSE NASIONALE
PADAGENTSKAP MSB BEPERK**

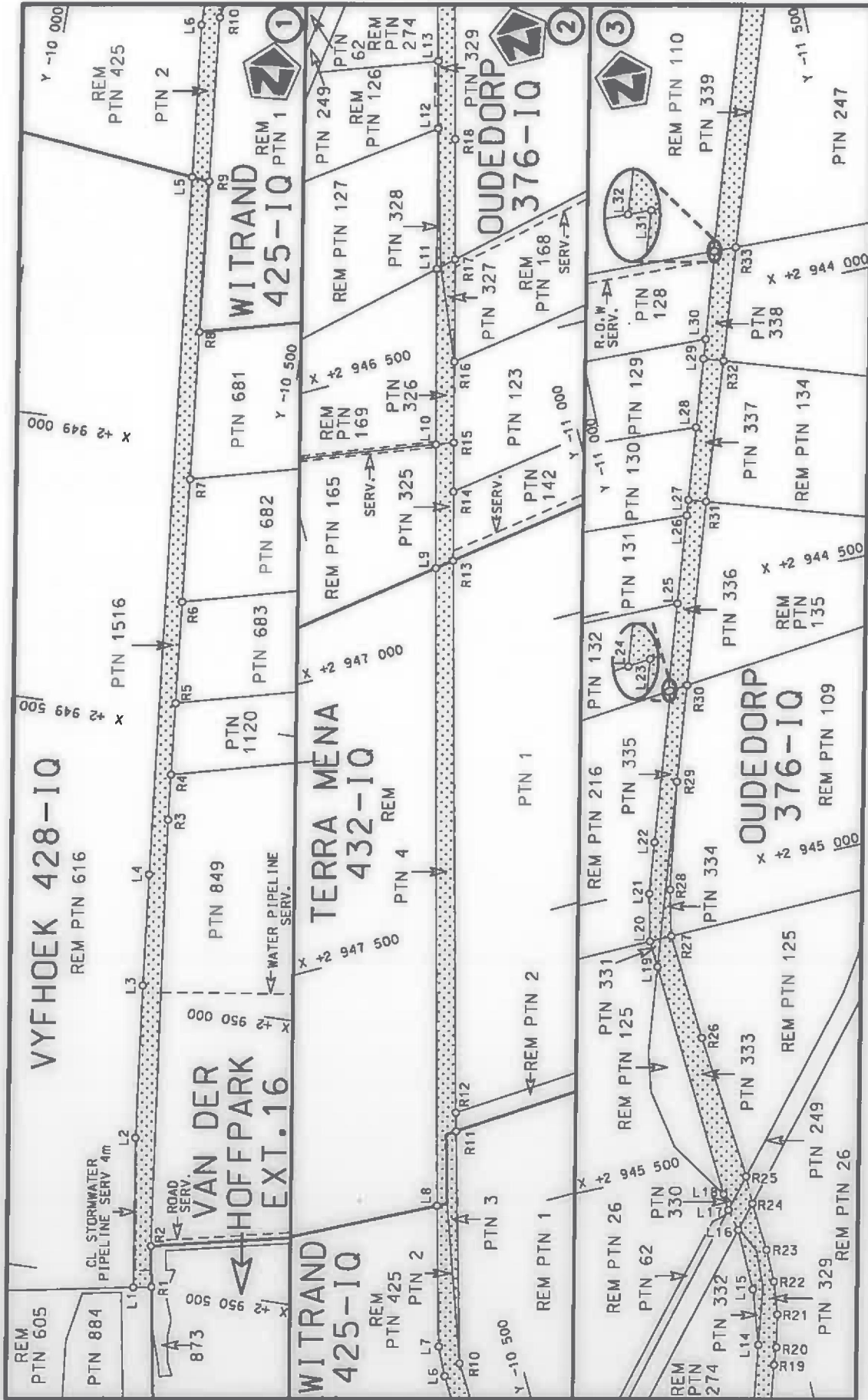
Registrasie No: 1998/009584/30

VERKLARING WYSIGING VAN NASIONALE PAD R501 SEKSIE 3

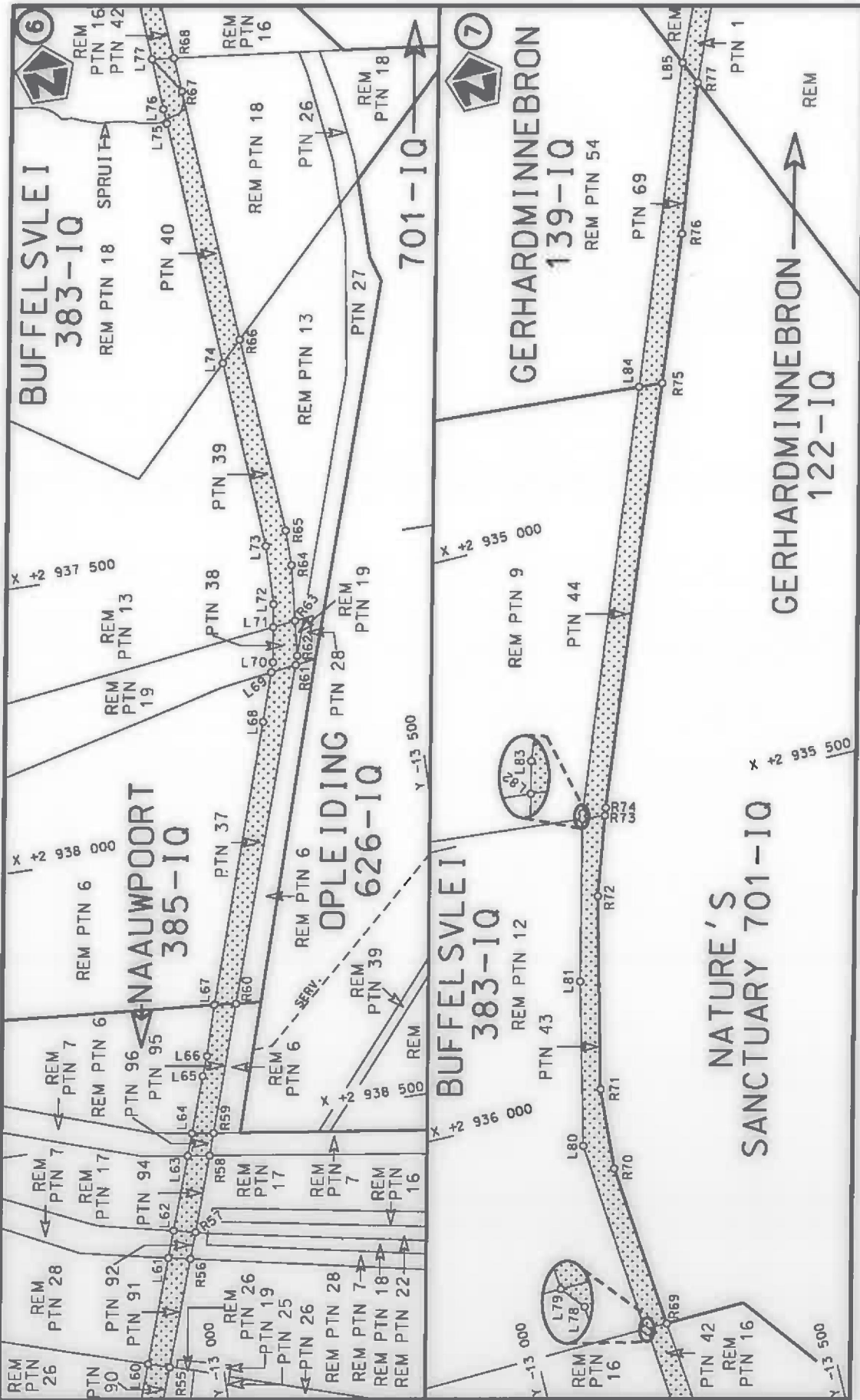
WYSIGING VAN VERKLARING No. 305 VAN 2018.

Kragtens Artikel 40(1)(b) van die Suid-Afrikaanse Nasionale Padagentskap Beperk en Nasionale Paaie Wet 1998 (Wet No. 7 van 1998), wysig ek hiermee Verklaring No. 305 van 2018 deur paragraaf B(II) en (III) van die Skedule te vervang, synde die gedeelte van die beskrywende verklaring van die pad vanaf 'n punt in lyn met die noordelike grens van die opgemete erwe noord van Potchefstroom tydens datum van verklaring tot by die algemene grens tussen plase Driefontein 355-IQ en Uitval 280-IQ, met bygaande velle 1 tot 17 van Plan No. P1056/18.

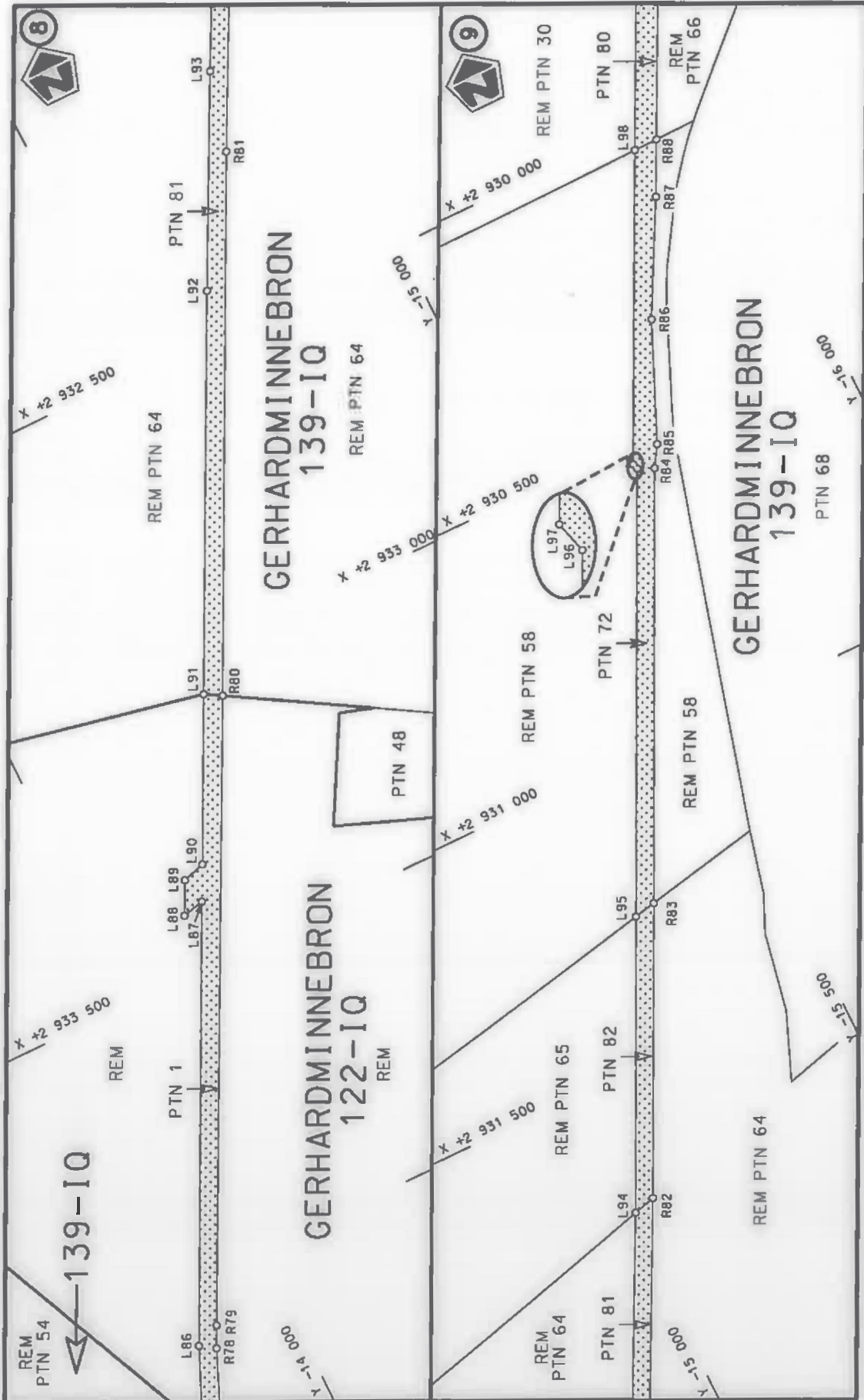
(Nasionale Pad R501 Seksie 3: Potchefstroom – Driefontein)
MINISTER VAN VERVOER



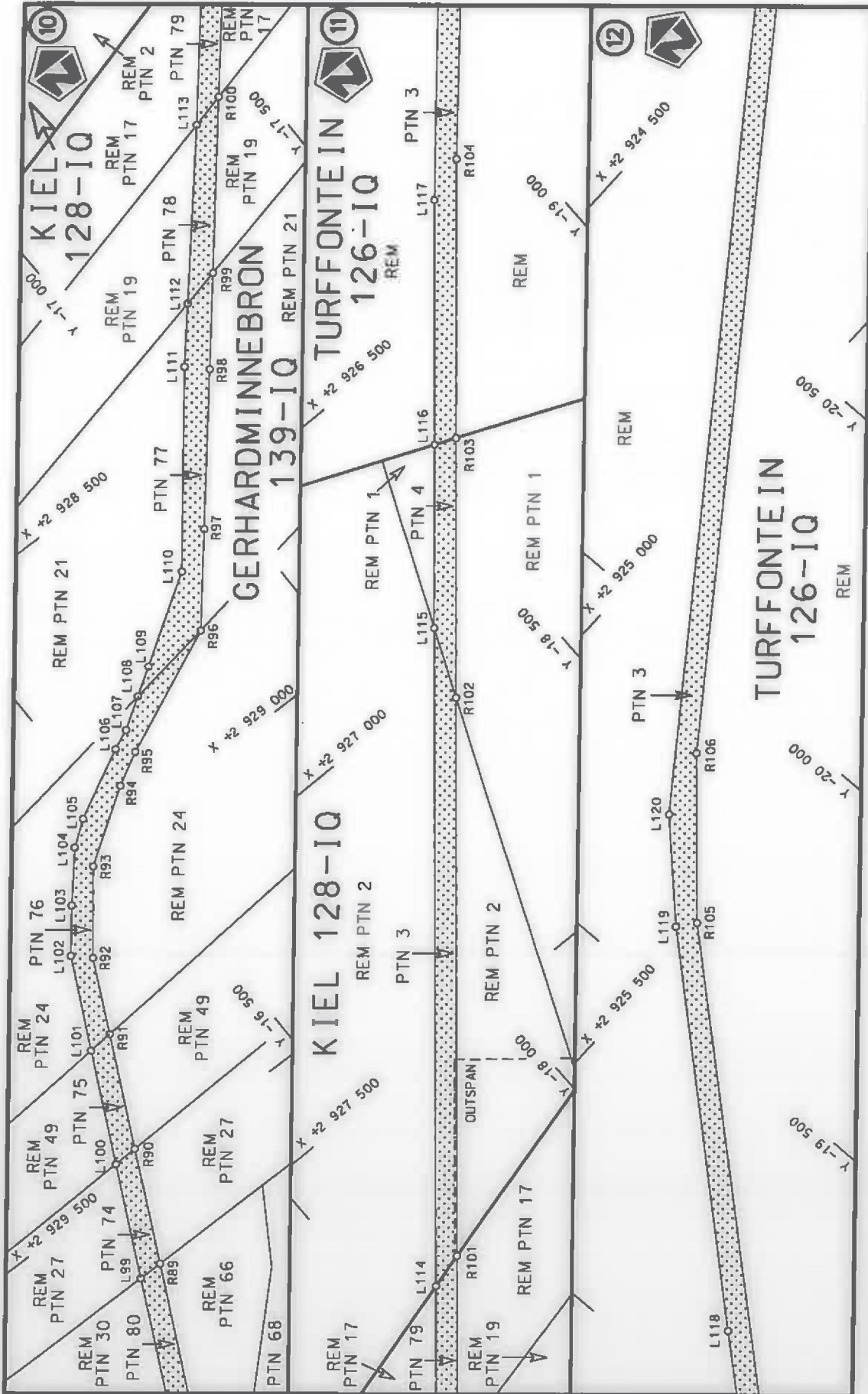
<p>Die Suid Afrikaanse Nasionale Padagentskap MSB Bpk The South African National Roads Agency SOC Ltd</p>	<p>Die figuur getoon The figure shown</p>	<p>steldie podreserwe voor van 'n gedeelte represents the road reserve of a portion van Nasionale Roete R501 of National Route</p>	<p>Vel Sheet 1 of 17</p>
<p>Plan P1056/18</p>		<p>3</p>	<p>Seksie Section</p>

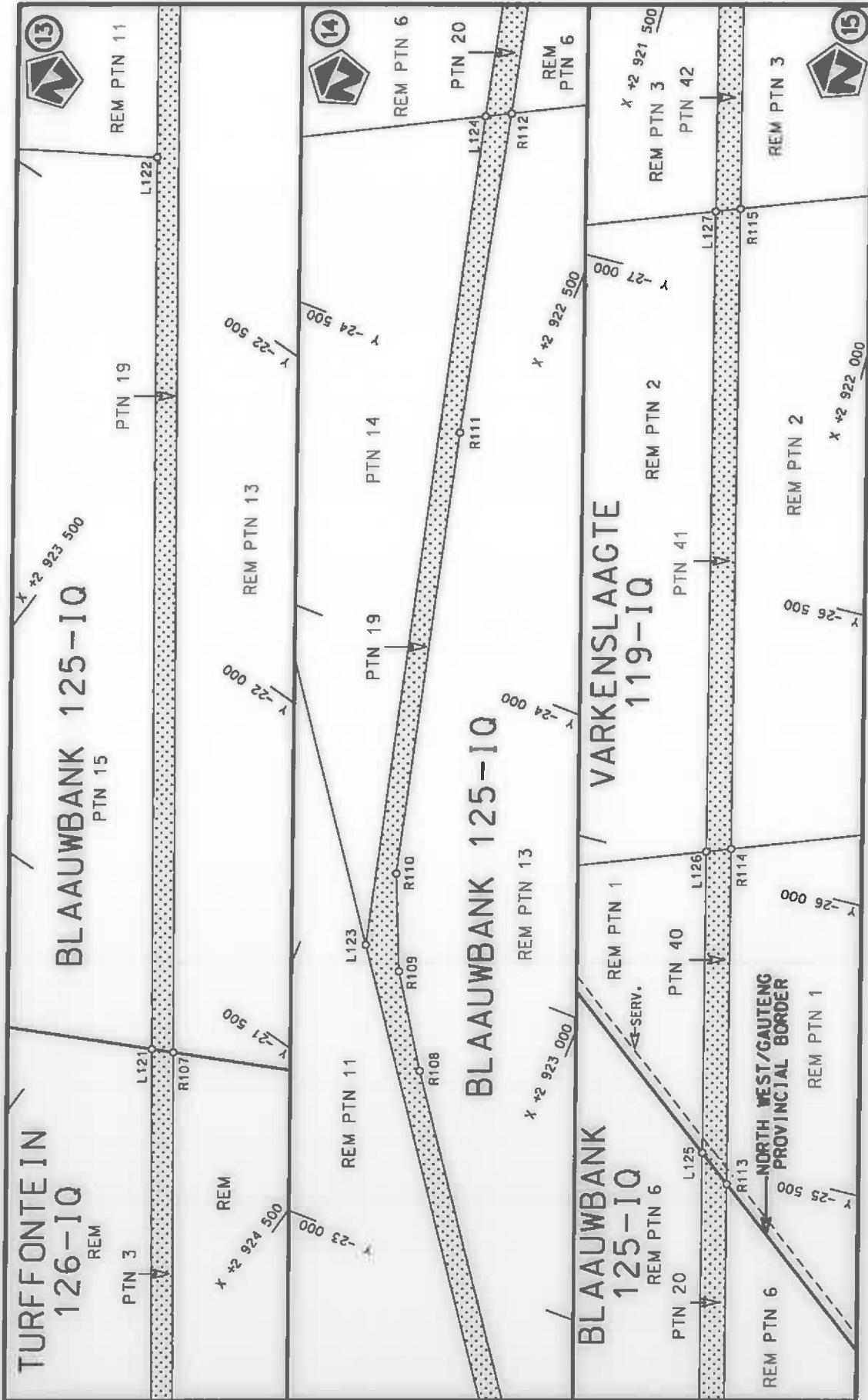



<p>Die Suid Afrikaanse Nasionale Padagentskap MSB Bpk The South African National Roads Agency SOC Ltd</p>	<p>Die figuur getoon The figure shown</p>	<p>stelt die podreserwe voor van 'n gedeelte represents the road reserve of a portion van Nasionale Roete R501 of National Route</p>	<p>Vel Sheet 3 of 17</p> <p>Plan P1056/18</p>
---	---	--	---

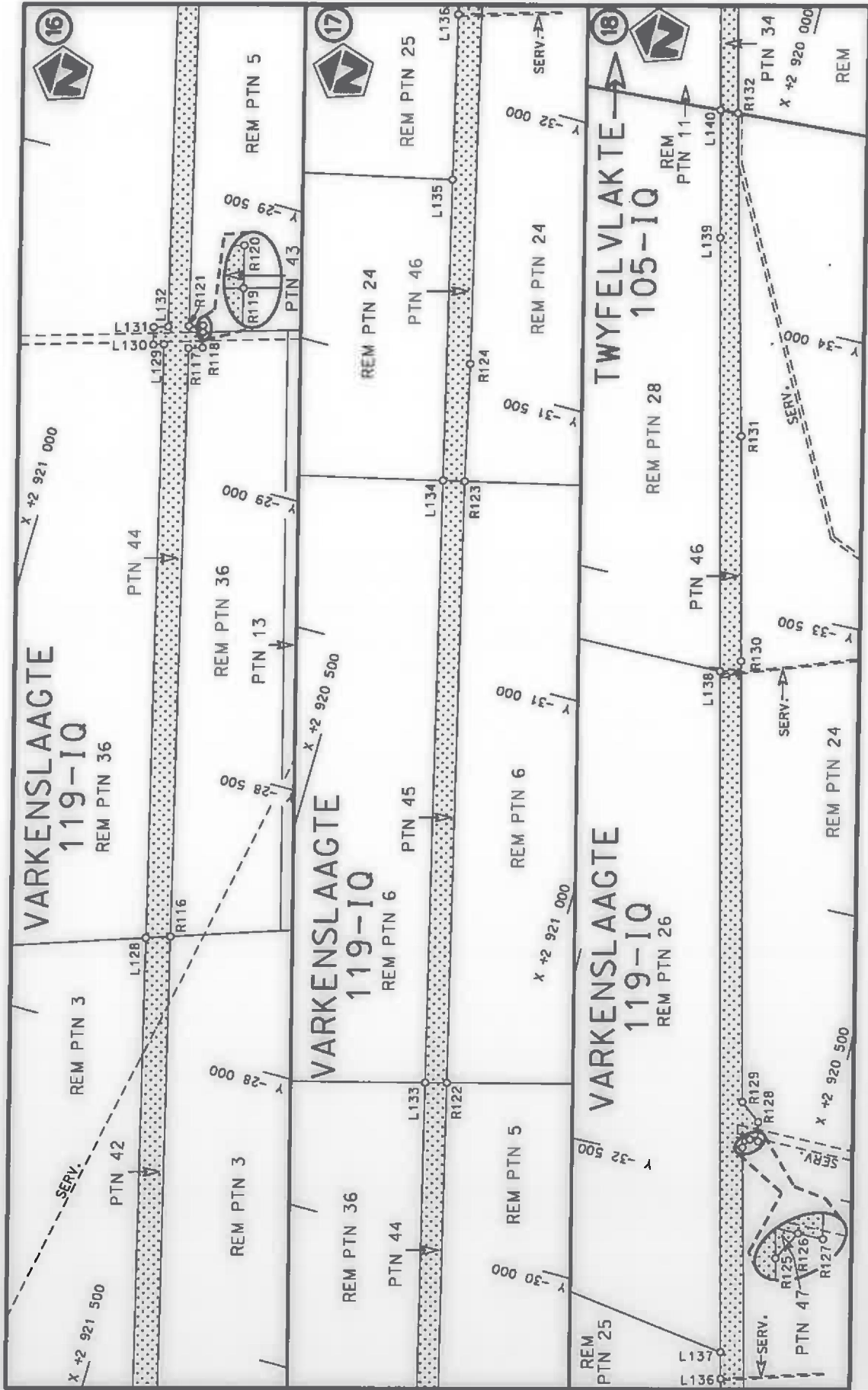


<p>Die Suid Afrikaanse Nasionale Padagentskap MSB Bpk The South African National Roads Agency SOC Ltd</p>	<p>Die figuur getoon The figure shown</p> <p>stel die podreserwe voor van 'n gedeelte represents the road reserve of a portion van Nasionale Roete R501 of National Route</p>	<p>Vel Sheet 4 of 17</p> <p>Plan P1056/18</p>
<p>3</p>		<p>Seksie Section</p>

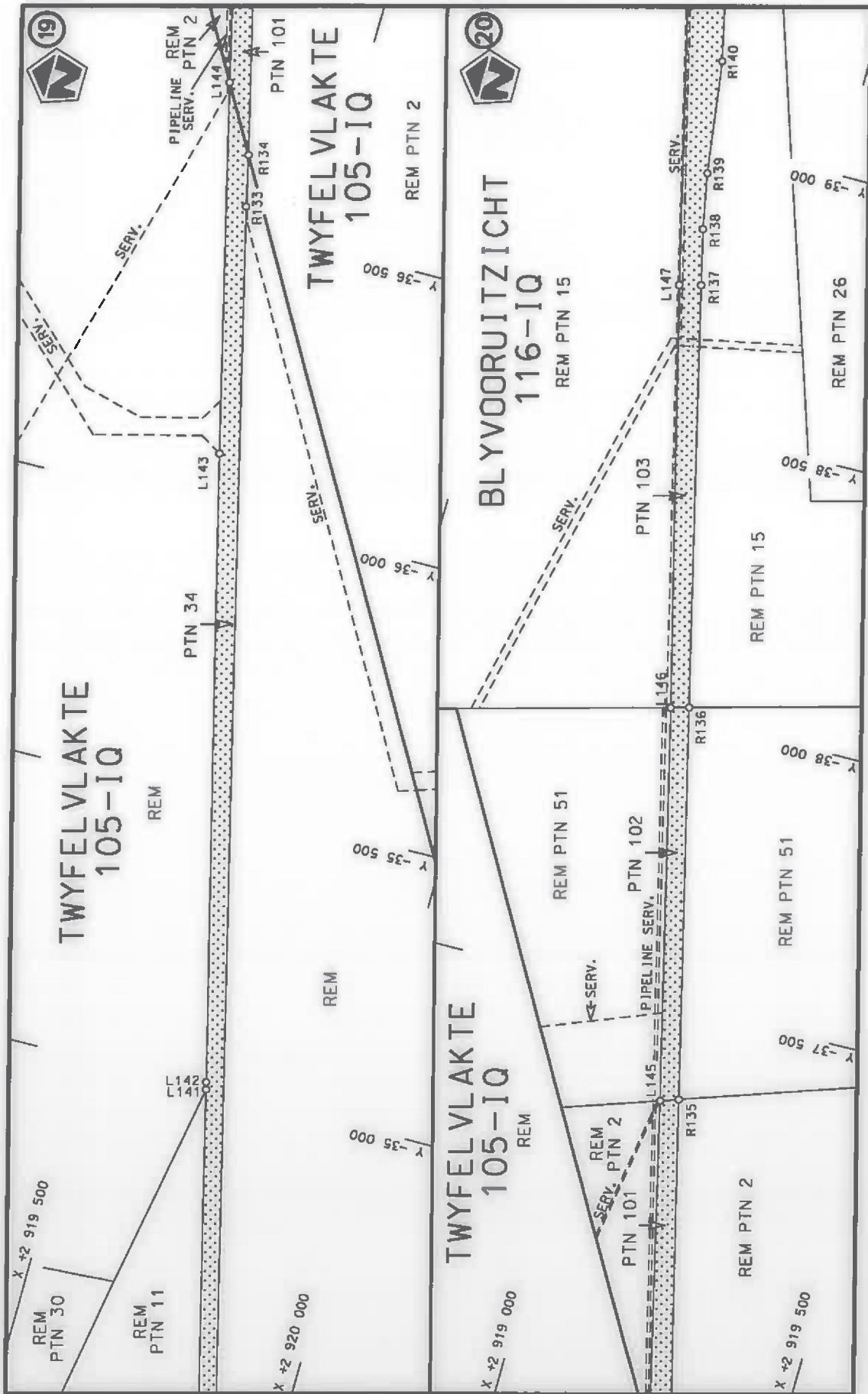




Die Suid Afrikaanse Nasionale Padagentskop MSB Bpk The South African National Roads Agency SOC Ltd	Die figuur getoon The figure shown	steidie padreserwe voor van 'n gedeelte represents the road reserve of a portion van Nasionale Roete R501 of National Route	Vel Sheet 6 of 17
		3	Plan P1056/18



<p>Die Suid Afrikaanse Nasionale Padagentskap MSB Bpk The South African National Roads Agency SOC Ltd</p>	<p>Die figuur getoon The figure shown</p>	<p>steldie padreserwe voor van 'n gedeelte represents the road reserve of a portion van Nasionale Roete R501 of National Route</p>
<p>Vel Sheet 7 of 17</p>	<p>3</p>	<p>Seksie Section</p>
<p>Plan P1056/18</p>	<p></p>	<p></p>

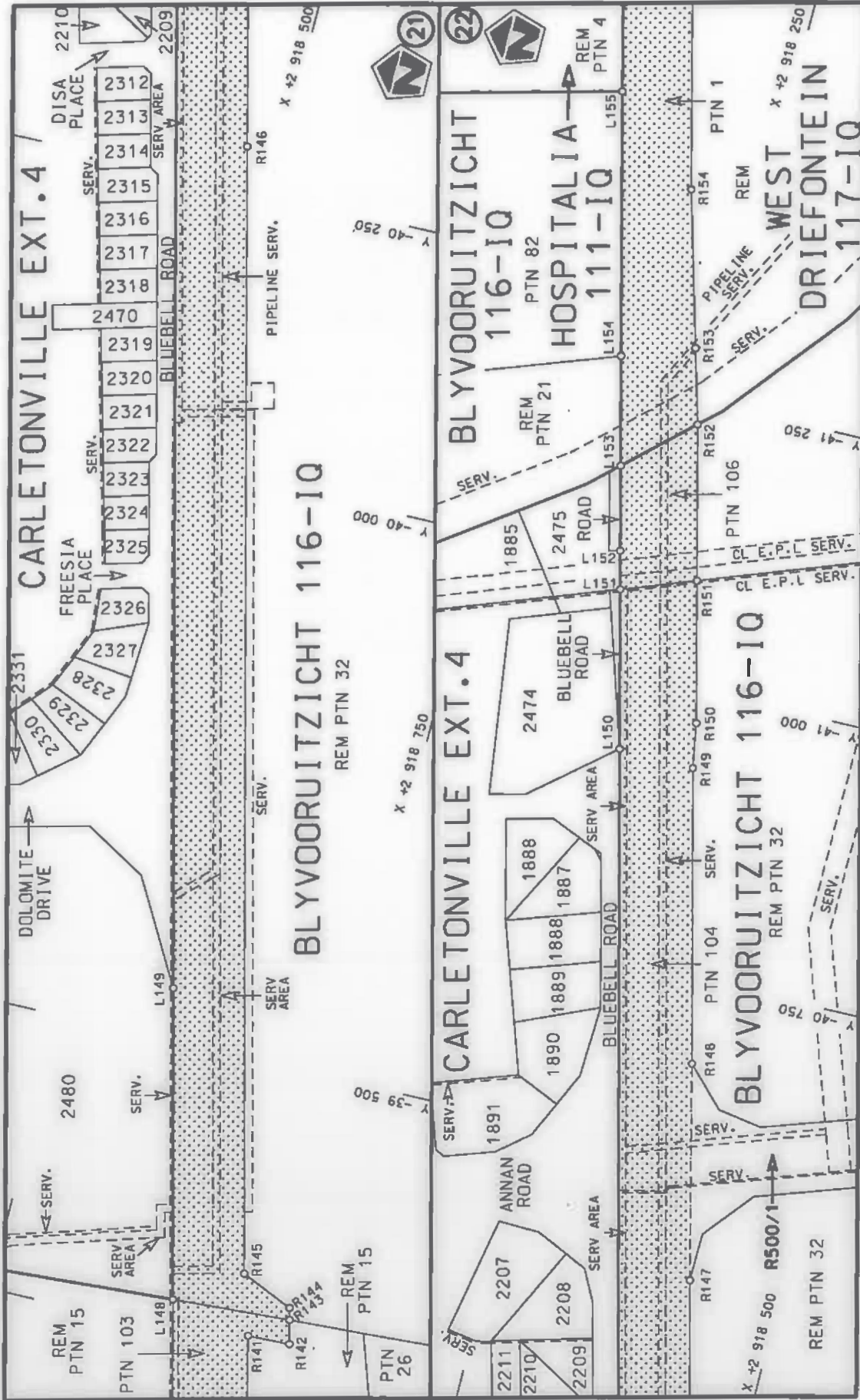


Die Suid Afrikaanse Nasionale Padagentskap MSB Bpk
The South African National Roads Agency SOC Ltd

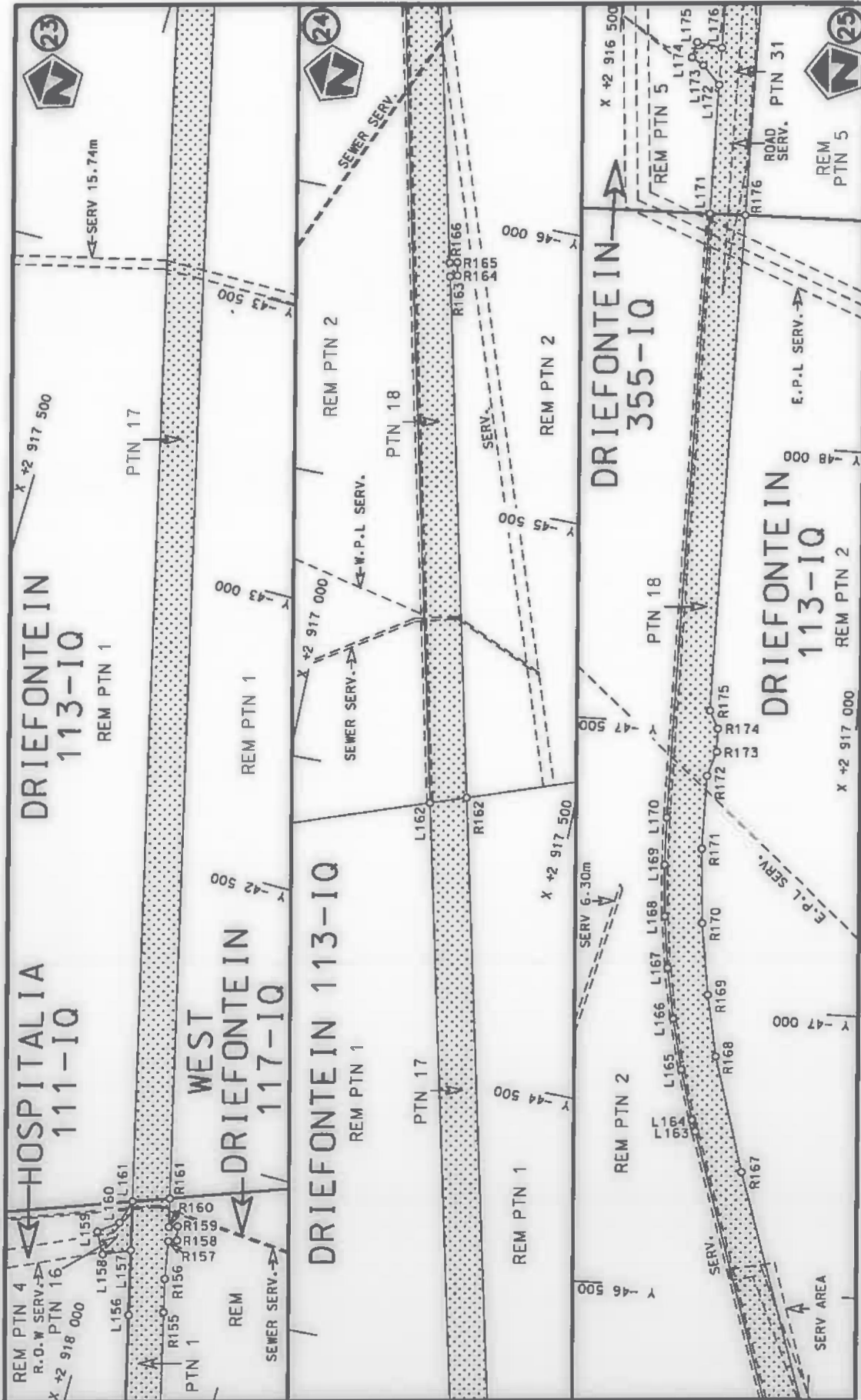
Die figuur getoon
The figure shown

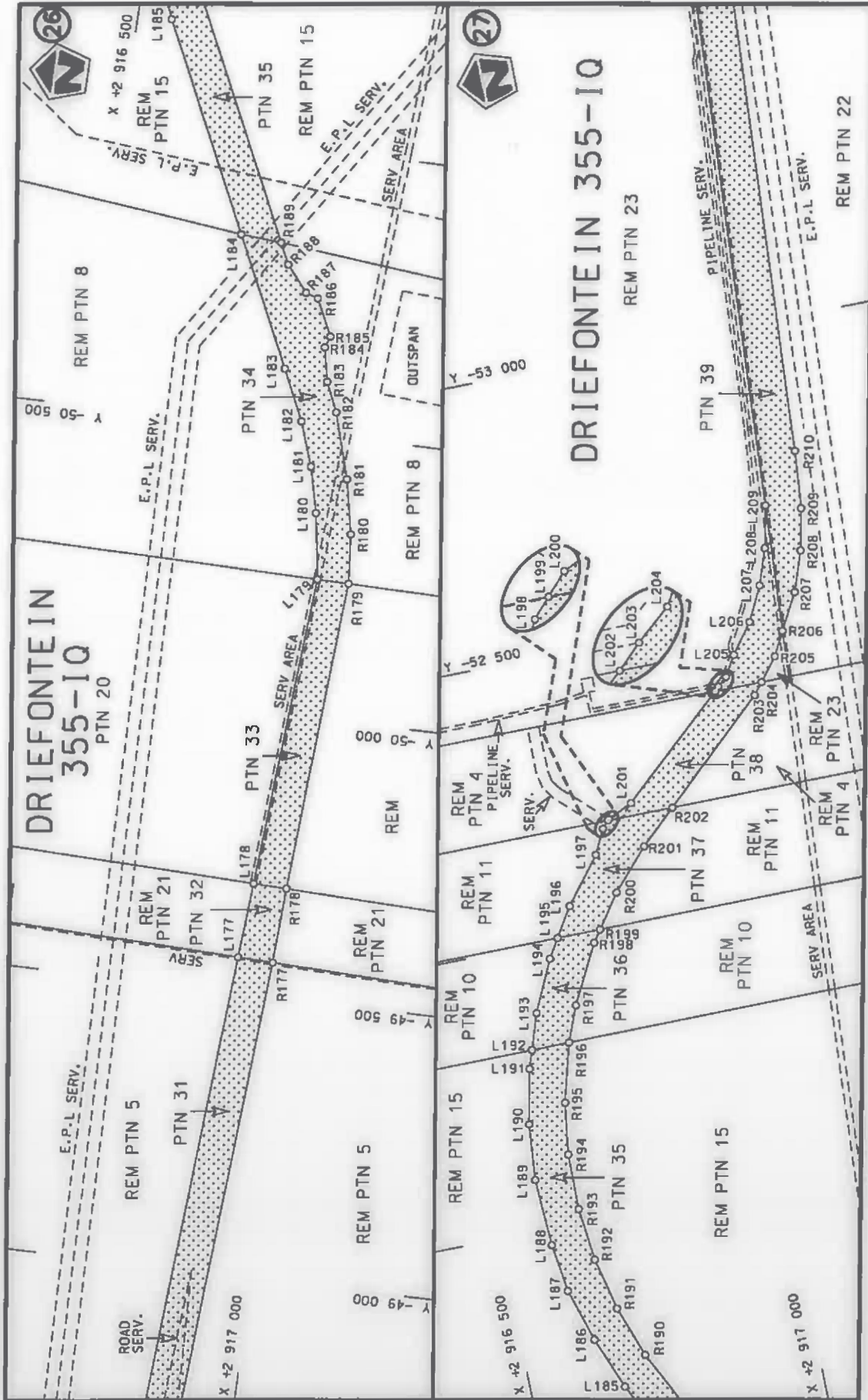
stelt die padreserwe voor van 'n gedeelte
represents the road reserve of a portion
van Nasionale Roete R501 Sektie
of National Route R501 Section

Vel Sheet 8 of 17
Plan P1056/18

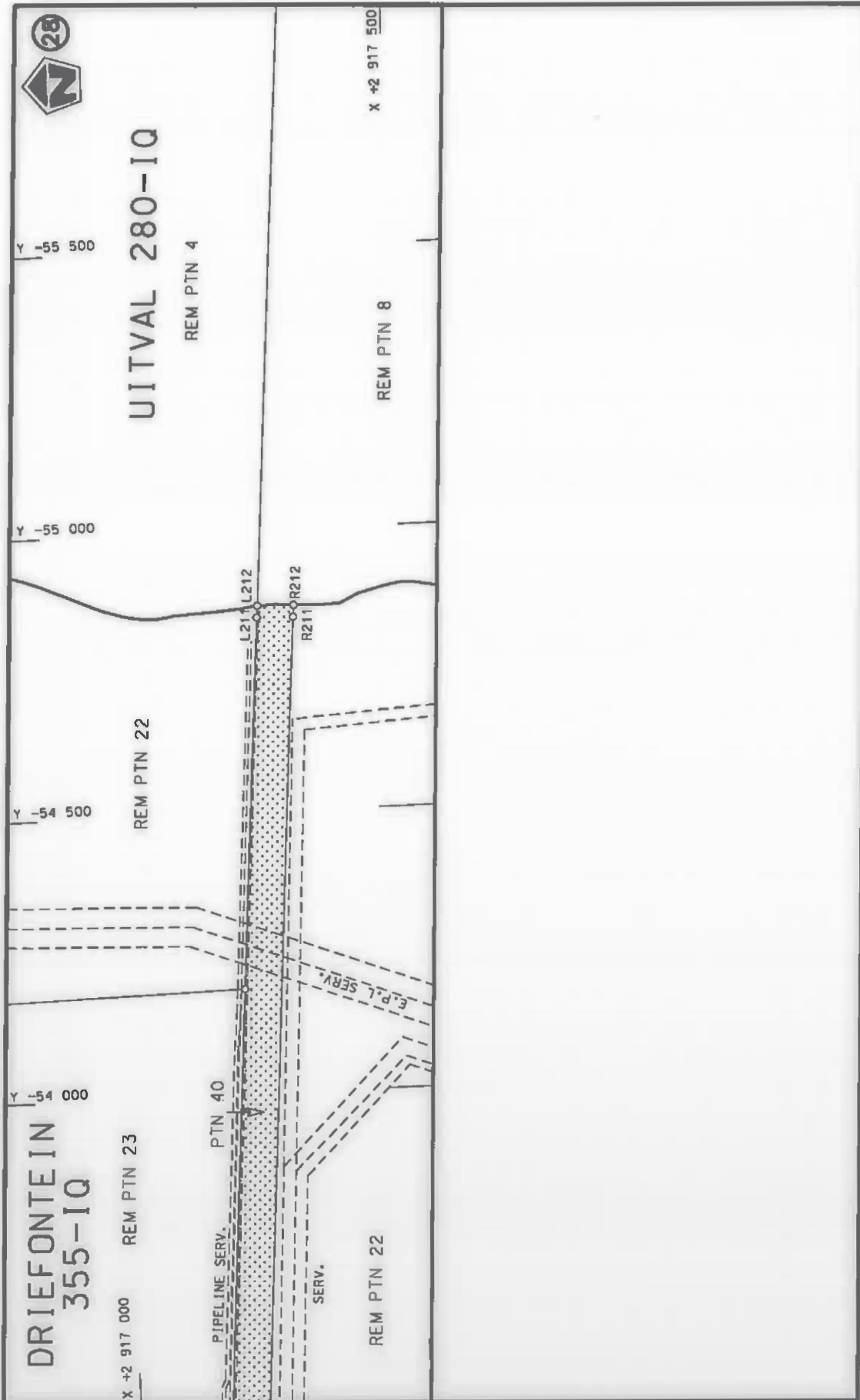


<p>Die Suid Afrikaanse Nasionale Padagentskap MSB Bpk The South African National Roads Agency SOC Ltd</p>	<p>Die figuur getoon The figure shown</p>	<p>stedeie podreserwe voor van 'n gedeelte represents the road reserve of a portion van Nasionale Roete R501 Sektie of National Route R501 Section</p>	<p>Vel Sheet 9 of 17</p>
<p>Plan P1056/18</p>		<p>3</p>	





<p>Die Suid Afrikaanse Nasionale Padagentskap MSB Bpk The South African National Roads Agency SOC Ltd</p>	<p>Die figuur getoon The figure shown</p>	<p>steldie padreserwe voor van 'n gedeelte represents the road reserve of a portion van Nasionale Roete R501 Sektie of National/Route R501 Section</p>	<p>Vel Sheet 11 of 17</p>
<p>Plan P1056/18</p>		<p>3</p>	<p>Section</p>



Vel Sheet 12 of 17	3	Plan P1056/18
steldie padreserwe voor van 'n gedeelte represents the road reserve of a portion van Nasionale Roete R501 of National Route		
	Die figuur getoon The figure shown	Die Suid Afrikaanse Nasionale Padagentskap MSB Bpk The South African National Roads Agency SOC Ltd

PADRESERWE KOÖRDINATE / ROAD RESERVE CO-ORDINATES							
LINKERKANT/LEFT HAND SIDE				REGTERKANT/RIGHT HAND SIDE			
	Y	X	WG 27°		Y	X	
L1	-10	458.93	2 950 503.96	R1	-10	490.53	2 950 500.57
L2	-10	438.23	2 950 237.95	R2	-10	482.63	2 950 428.06
L3	-10	425.87	2 949 967.00	R3	-10	442.40	2 949 669.73
L4	-10	418.38	2 949 769.58	R4	-10	439.92	2 949 589.45
L5	-10	375.65	2 948 529.19	R5	-10	435.86	2 949 462.22
L6	-10	365.89	2 948 259.05	R6	-10	430.10	2 949 282.02
L7	-10	369.28	2 948 205.07	R7	-10	423.14	2 949 063.70
L8	-10	428.42	2 947 961.51	R8	-10	414.76	2 948 801.93
L9	-10	704.82	2 946 860.54	R9	-10	406.33	2 948 534.87
L10	-10	758.87	2 946 647.34	R10	-10	396.40	2 948 243.53
L11	-10	836.43	2 946 345.24	R11	-10	492.49	2 947 841.13
L12	-10	899.39	2 946 103.99	R12	-10	500.42	2 947 808.82
L13	-10	928.45	2 945 988.22	R13	-10	736.62	2 946 855.25
L14	-10	966.37	2 945 829.68	R14	-10	767.33	2 946 736.37
L15	-10	972.70	2 945 730.36	R15	-10	789.26	2 946 651.88
L16	-10	964.75	2 945 621.80	R16	-10	825.22	2 946 512.87
L17	-10	953.59	2 945 583.71	R17	-10	870.80	2 946 336.95
L18	-10	950.05	2 945 554.67	R18	-10	922.83	2 946 130.05
L19	-10	901.23	2 945 135.71	R19	-10	987.30	2 945 869.52
L20	-10	895.63	2 945 088.68	R20	-10	996.39	2 945 838.90
L21	-10	907.59	2 945 004.92	R21	-11	007.17	2 945 781.68
L22	-10	930.97	2 944 915.87	R22	-11	010.42	2 945 722.96
L23	-11	000.71	2 944 654.01	R23	-11	006.68	2 945 664.64
L24	-10	996.28	2 944 654.76	R24	-10	995.95	2 945 579.39
L25	-11	036.43	2 944 502.73	R25	-10	993.19	2 945 529.85
L26	-11	076.60	2 944 350.79	R26	-10	956.99	2 945 273.52
L27	-11	083.65	2 944 324.22	R27	-10	933.49	2 945 085.66
L28	-11	116.78	2 944 198.81	R28	-10	944.46	2 945 003.51
L29	-11	148.04	2 944 080.68	R29	-10	986.09	2 944 815.81
L30	-11	156.96	2 944 046.86	R30	-11	030.35	2 944 649.09
L31	-11	197.13	2 943 895.01	R31	-11	112.94	2 944 332.14
L32	-11	194.57	2 943 895.07	R32	-11	181.51	2 944 090.12
L33	-11	318.47	2 943 443.39	R33	-11	233.45	2 943 894.15
L34	-11	368.19	2 943 277.73	R34	-11	369.03	2 943 401.42
L35	-11	396.66	2 943 193.69	R35	-11	405.03	2 943 273.78
L36	-11	460.81	2 943 006.01	R36	-11	434.15	2 943 190.63
L37	-11	551.42	2 942 743.18	R37	-11	500.23	2 943 002.23
L38	-11	661.84	2 942 424.67	R38	-11	590.87	2 942 740.36
L39	-11	762.89	2 942 135.02	R39	-11	700.63	2 942 423.85
L40	-11	809.05	2 941 993.65	R40	-11	800.20	2 942 135.39
L41	-11	817.10	2 941 980.68	R41	-11	852.91	2 941 981.65
L42	-11	907.67	2 941 717.20	R42	-11	939.05	2 941 720.41
L43	-11	986.25	2 941 488.27	R43	-12	017.61	2 941 491.43
L44	-12	038.51	2 941 334.43	R44	-12	070.54	2 941 336.84
L45	-12	077.73	2 941 220.95	R45	-12	108.66	2 941 225.49
L46	-12	096.77	2 941 165.86	R46	-12	122.96	2 941 183.27
L47	-12	184.02	2 940 913.76	R47	-12	128.20	2 941 168.20
L48	-12	235.99	2 940 762.60	R48	-12	216.23	2 940 914.43
L49	-12	331.76	2 940 484.02	R49	-12	268.61	2 940 763.28
L50	-12	358.72	2 940 405.61	R50	-12	369.56	2 940 470.88
L51	-12	354.48	2 940 395.54	R51	-12	393.83	2 940 400.58

Vel Sheet	13	Van of	17
--------------	----	-----------	----

P1056/18

PADRESERWE KOÖRDINATE / ROAD RESERVE CO-ORDINATES											
LINKERKANT/LEFT HAND SIDE					REGTERKANT/RIGHT HAND SIDE						
	Y		X	WG 27°		Y		X			
L52	-12	350.62	2	940	386.39	R52	-12	477.52	2	940	158.19
L53	-12	362.26	2	940	349.64	R53	-12	530.08	2	940	005.95
L54	-12	388.41	2	940	319.43	R54	-12	842.27	2	939	101.74
L55	-12	444.71	2	940	153.33	R55	-12	907.14	2	938	913.84
L56	-12	497.18	2	939	998.54	R56	-12	971.17	2	938	728.39
L57	-12	718.03	2	939	347.01	R57	-12	986.99	2	938	682.56
L58	-12	755.27	2	939	238.51	R58	-13	031.57	2	938	551.45
L59	-12	807.42	2	939	087.01	R59	-13	044.14	2	938	512.75
L60	-12	870.78	2	938	902.03	R60	-13	116.27	2	938	290.72
L61	-12	933.20	2	938	720.40	R61	-13	304.99	2	937	709.76
L62	-12	949.23	2	938	673.86	R62	-13	309.92	2	937	694.29
L63	-12	993.21	2	938	545.91	R63	-13	315.12	2	937	632.02
L64	-13	006.43	2	938	507.39	R64	-13	323.39	2	937	533.10
L65	-13	039.88	2	938	409.21	R65	-13	322.07	2	937	470.67
L66	-13	052.62	2	938	375.34	R66	-13	292.47	2	937	122.26
L67	-13	078.58	2	938	286.80	R67	-13	254.06	2	936	670.18
L68	-13	235.04	2	937	801.41	R68	-13	248.47	2	936	609.53
L69	-13	261.44	2	937	716.42	R69	-13	230.48	2	936	414.47
L70	-13	266.64	2	937	699.33	R70	-13	207.14	2	936	123.99
L71	-13	276.13	2	937	637.26	R71	-13	217.22	2	935	981.01
L72	-13	282.46	2	937	596.87	R72	-13	292.31	2	935	645.04
L73	-13	284.42	2	937	492.63	R73	-13	337.71	2	935	508.29
L74	-13	256.89	2	937	159.23	R74	-13	342.02	2	935	495.17
L75	-13	220.51	2	936	722.84	R75	-13	610.16	2	934	783.10
L76	-13	218.14	2	936	695.12	R76	-13	704.22	2	934	533.23
L77	-13	211.05	2	936	605.55	R77	-13	791.92	2	934	278.07
L78	-13	196.34	2	936	421.52	R78	-13	859.16	2	934	119.24
L79	-13	191.61	2	936	415.56	R79	-13	877.40	2	934	082.77
L80	-13	164.98	2	936	072.07	R80	-14	377.93	2	933	082.22
L81	-13	227.66	2	935	785.57	R81	-14	805.19	2	932	217.28
L82	-13	298.40	2	935	505.07	R82	-15	054.87	2	931	723.92
L83	-13	300.87	2	935	495.26	R83	-15	286.06	2	931	253.32
L84	-13	570.17	2	934	780.18	R84	-15	625.57	2	930	559.49
L85	-13	774.54	2	934	237.51	R85	-15	648.15	2	930	523.30
L86	-13	833.89	2	934	101.82	R86	-15	735.99	2	930	319.95
L87	-14	185.51	2	933	394.66	R87	-15	837.81	2	930	127.79
L88	-14	147.59	2	933	403.61	R88	-15	882.88	2	930	036.46
L89	-14	175.83	2	933	347.29	R89	-16	073.10	2	929	650.93
L90	-14	215.18	2	933	335.78	R90	-16	166.08	2	929	462.49
L91	-14	349.90	2	933	065.13	R91	-16	259.05	2	929	274.08
L92	-14	667.48	2	932	424.25	R92	-16	320.81	2	929	148.91
L93	-14	842.04	2	932	076.46	R93	-16	421.99	2	929	020.23
L94	-15	016.67	2	931	733.90	R94	-16	546.75	2	928	936.23
L95	-15	248.23	2	931	261.10	R95	-16	604.34	2	928	904.96
L96	-15	598.14	2	930	546.55	R96	-16	826.02	2	928	804.88
L97	-15	595.46	2	930	536.73	R97	-16	942.21	2	928	666.11
L98	-15	840.63	2	930	036.87	R98	-17	125.31	2	928	447.42
L99	-16	031.10	2	929	650.74	R99	-17	235.65	2	928	315.64
L100	-16	123.83	2	929	463.67	R100	-17	436.22	2	928	074.51
L101	-16	216.20	2	929	277.31	R101	-17	654.59	2	927	811.98
L102	-16	293.16	2	929	122.03	R102	-18	292.24	2	927	044.31

Vel Sheet	14	Van of	17
--------------	----	-----------	----

P1056/18

PADRESERWE KOÖRDINATE / ROAD RESERVE CO-ORDINATES						
LINKERKANT/LEFT HAND SIDE			REGTERKANT/RIGHT HAND SIDE			
	Y	X	WG 27°		Y	X
L103	-16 349.86	2 929	052.23	R103	-18 588.39	2 926 688.14
L104	-16 417.57	2 928	974.18	R104	-18 906.48	2 926 305.82
L105	-16 460.62	2 928	942.58	R105	-19 624.58	2 925 478.93
L106	-16 580.77	2 928	879.60	R106	-19 850.04	2 925 276.24
L107	-16 615.83	2 928	863.96	R107	-21 398.71	2 924 157.66
L108	-16 668.62	2 928	829.53	R108	-23 313.01	2 922 777.78
L109	-16 715.57	2 928	798.96	R109	-23 463.89	2 922 677.45
L110	-16 865.41	2 928	701.38	R110	-23 622.84	2 922 607.40
L111	-17 093.73	2 928	416.86	R111	-24 387.58	2 922 410.60
L112	-17 167.60	2 928	330.99	R112	-24 943.27	2 922 275.89
L113	-17 374.91	2 928	089.98	R113	-25 463.98	2 922 144.61
L114	-17 592.25	2 927	829.50	R114	-26 041.99	2 921 998.88
L115	-18 342.68	2 926	924.12	R115	-27 143.90	2 921 721.07
L116	-18 552.14	2 926	672.93	R116	-28 198.92	2 921 455.08
L117	-18 830.42	2 926	336.92	R117	-29 220.93	2 921 197.41
L118	-19 115.72	2 926	005.25	R118	-29 228.15	2 921 221.21
L119	-19 595.30	2 925	455.78	R119	-29 255.12	2 921 214.25
L120	-19 737.56	2 925	313.15	R120	-29 266.57	2 921 211.24
L121	-21 381.79	2 924	124.01	R121	-29 259.39	2 921 187.20
L122	-22 665.90	2 923	198.13	R122	-30 293.94	2 920 925.94
L123	-23 486.12	2 922	606.72	R123	-31 339.62	2 920 662.00
L124	-24 922.16	2 922	236.83	R124	-31 544.23	2 920 613.79
L125	-25 507.49	2 922	089.38	R125	-32 551.50	2 920 359.59
L126	-26 026.83	2 921	958.55	R126	-32 568.93	2 920 368.72
L127	-27 128.88	2 921	680.94	R127	-32 568.87	2 920 383.65
L128	-28 185.58	2 921	414.75	R128	-32 602.60	2 920 375.64
L129	-29 216.75	2 921	154.99	R129	-32 631.25	2 920 339.93
L130	-29 211.58	2 921	137.25	R130	-33 398.22	2 920 147.84
L131	-29 241.62	2 921	129.37	R131	-33 789.16	2 920 050.79
L132	-29 248.90	2 921	153.36	R132	-34 348.88	2 919 905.58
L133	-30 284.57	2 920	889.93	R133	-36 538.41	2 919 364.96
L134	-31 331.07	2 920	625.31	R134	-36 628.07	2 919 344.64
L135	-31 853.39	2 920	493.72	R135	-37 336.51	2 919 170.23
L136	-32 139.74	2 920	422.10	R136	-38 017.75	2 919 003.08
L137	-32 186.28	2 920	410.46	R137	-38 750.32	2 918 823.33
L138	-33 372.14	2 920	116.51	R138	-38 847.57	2 918 799.81
L139	-34 125.64	2 919	929.73	R139	-38 945.90	2 918 780.85
L140	-34 347.31	2 919	874.79	R140	-39 144.92	2 918 752.83
L141	-34 998.99	2 919	713.75	R141	-39 260.10	2 918 726.54
L142	-35 011.63	2 919	710.62	R142	-39 261.16	2 918 763.18
L143	-36 101.76	2 919	437.27	R143	-39 282.03	2 918 758.13
L144	-36 744.38	2 919	278.56	R144	-39 292.38	2 918 755.62
L145	-37 326.40	2 919	140.29	R145	-39 313.07	2 918 710.15
L146	-38 009.50	2 918	972.14	R146	-40 286.22	2 918 470.34
L147	-38 741.28	2 918	786.64	R147	-40 488.50	2 918 420.50
L148	-39 276.53	2 918	655.37	R148	-40 676.10	2 918 375.90
L149	-39 545.62	2 918	589.06	R149	-40 931.52	2 918 312.99
L150	-40 933.48	2 918	247.04	R150	-40 971.07	2 918 306.34
L151	-41 071.29	2 918	213.08	R151	-41 094.10	2 918 276.06
L152	-41 104.63	2 918	204.87	R152	-41 229.06	2 918 242.83
L153	-41 178.01	2 918	186.79	R153	-41 294.30	2 918 224.63

Vel Sheet	15	Van of	17
--------------	----	-----------	----

P1056/18

PADRESERWE KOÖRDINATE / ROAD RESERVE CO-ORDINATES					
LINKERKANT/LEFT HAND SIDE			REGTERKANT/RIGHT HAND SIDE		
	Y	X	WG 27°		
L154	-41 272.69	2 918	163.45	R154	-41 430.18 2 918 186.71
L155	-41 500.88	2 918	107.21	R155	-41 690.76 2 918 122.48
L156	-41 670.12	2 918	065.50	R156	-41 748.27 2 918 108.31
L157	-41 781.95	2 918	037.94	R157	-41 814.45 2 918 096.04
L158	-41 762.13	2 917	992.86	R158	-41 819.60 2 918 109.96
L159	-41 798.58	2 917	972.94	R159	-41 844.14 2 918 104.16
L160	-41 824.15	2 918	005.81	R160	-41 838.88 2 918 090.01
L161	-41 866.36	2 918	017.13	R161	-41 888.32 2 918 077.79
L162	-44 964.80	2 917	254.44	R162	-44 986.39 2 917 314.39
L163	-46 794.20	2 916	804.06	R163	-45 885.05 2 917 092.98
L164	-46 814.81	2 916	798.39	R164	-45 889.27 2 917 104.83
L165	-46 904.43	2 916	779.85	R165	-45 911.97 2 917 099.84
L166	-46 994.82	2 916	765.69	R166	-45 908.86 2 917 087.02
L167	-47 085.56	2 916	756.16	R167	-46 721.20 2 916 883.98
L168	-47 177.15	2 916	751.12	R168	-46 927.04 2 916 839.15
L169	-47 268.66	2 916	750.66	R169	-47 036.68 2 916 825.28
L170	-47 352.52	2 916	754.30	R170	-47 164.43 2 916 815.15
L171	-48 423.74	2 916	825.20	R171	-47 296.62 2 916 814.30
L172	-48 651.78	2 916	840.26	R172	-47 426.13 2 916 823.28
L173	-48 686.64	2 916	812.77	R173	-47 468.39 2 916 840.13
L174	-48 700.83	2 916	792.86	R174	-47 509.49 2 916 841.95
L175	-48 727.43	2 916	801.92	R175	-47 541.81 2 916 828.00
L176	-48 716.93	2 916	844.56	R176	-48 420.32 2 916 886.19
L177	-49 562.49	2 916	900.69	R177	-49 560.41 2 916 961.33
L178	-49 695.66	2 916	909.80	R178	-49 693.74 2 916 967.67
L179	-50 244.69	2 916	946.10	R179	-50 243.78 2 916 999.89
L180	-50 361.16	2 916	927.64	R180	-50 331.20 2 916 991.80
L181	-50 441.91	2 916	907.89	R181	-50 427.38 2 916 971.88
L182	-50 519.15	2 916	880.37	R182	-50 542.61 2 916 937.63
L183	-50 608.40	2 916	839.37	R183	-50 594.63 2 916 914.78
L184	-50 834.94	2 916	731.04	R184	-50 654.23 2 916 902.36
L185	-51 196.74	2 916	558.14	R185	-50 674.52 2 916 909.20
L186	-51 289.71	2 916	523.37	R186	-50 738.75 2 916 878.41
L187	-51 384.31	2 916	496.17	R187	-50 746.29 2 916 857.32
L188	-51 470.03	2 916	485.31	R188	-50 791.98 2 916 819.70
L189	-51 589.55	2 916	480.20	R189	-50 828.99 2 916 802.29
L190	-51 688.80	2 916	489.90	R190	-51 244.79 2 916 603.84
L191	-51 785.54	2 916	510.48	R191	-51 336.00 2 916 572.75
L192	-51 817.29	2 916	521.01	R192	-51 428.96 2 916 552.32
L193	-51 880.01	2 916	541.95	R193	-51 523.06 2 916 543.55
L194	-51 969.90	2 916	583.88	R194	-51 621.92 2 916 545.42
L195	-52 003.28	2 916	604.30	R195	-51 713.46 2 916 558.39
L196	-52 054.62	2 916	635.93	R196	-51 816.96 2 916 586.56
L197	-52 134.39	2 916	697.82	R197	-51 879.36 2 916 611.03
L198	-52 177.08	2 916	719.08	R198	-51 981.64 2 916 663.92
L199	-52 189.88	2 916	730.75	R199	-52 002.86 2 916 678.78
L200	-52 191.80	2 916	732.50	R200	-52 061.38 2 916 719.65
L201	-52 211.99	2 916	775.63	R201	-52 131.91 2 916 782.84
L202	-52 376.05	2 916	957.25	R202	-52 189.14 2 916 844.39
L203	-52 383.39	2 916	964.55	R203	-52 355.18 2 917 022.88
L204	-52 397.37	2 916	980.86	R204	-52 375.41 2 917 038.86

Vel
Sheet 16 Van
of 17

P1056/18

