

DEPARTMENT OF TRANSPORT

NO. 422

15 MARCH 2019

**THE SOUTH AFRICAN NATIONAL ROADS
AGENCY SOC LIMITED****Registration No: 1998/009584/30****DECLARATION AMENDMENT OF EXISTING NATIONAL ROAD P720 SECTION 1 AS NATIONAL ROAD R69 SECTION 5****AMENDMENT OF DECLARATION No.'s 142 OF 2008 AND 923 OF 2010**

By virtue of section 40(1)(b) of The South African National Roads Agency Limited and National Roads Act 1998 (Act No. 7 of 1998), I hereby amend Declaration No.'s 142 of 2008 and 923 of 2010 by changing the route's number from National Road P720 Section 1 to National Road R69 Section 5 and by substituting it in its entirety, with the accompanying sheets 1 to 5 of Plan No. P1063/18.

(National Road R69 Section 5: N2 Junction – Golela Border Post)**MINISTER OF TRANSPORT**

DEPARTEMENT VAN VERVOER

NO. 422

15 MAART 2019

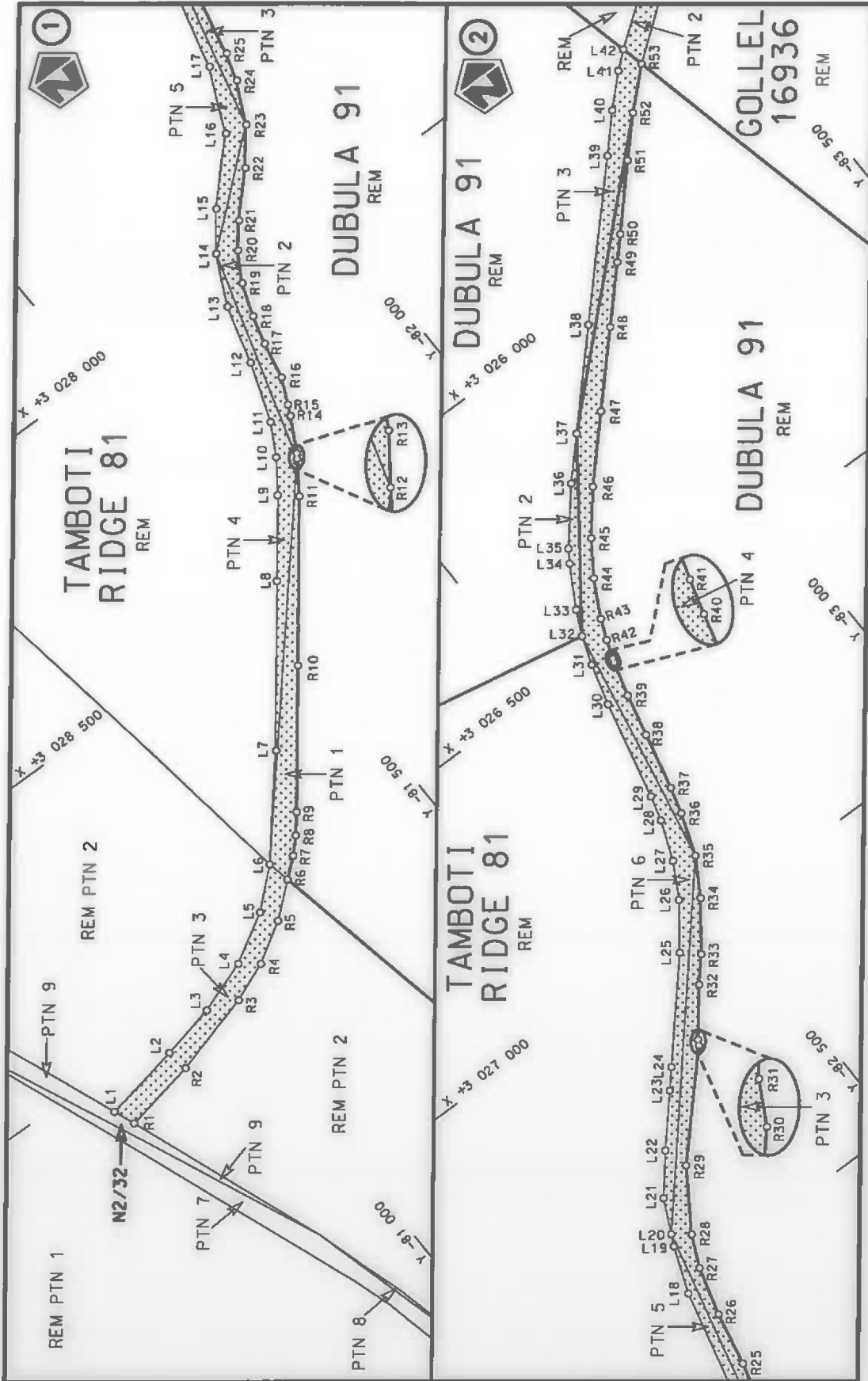
**DIE SUID-AFRIKAANSE NASIONALE
PADAGENTSKAP MSB BEPERK**

Registrasie No: 1998/009584/30

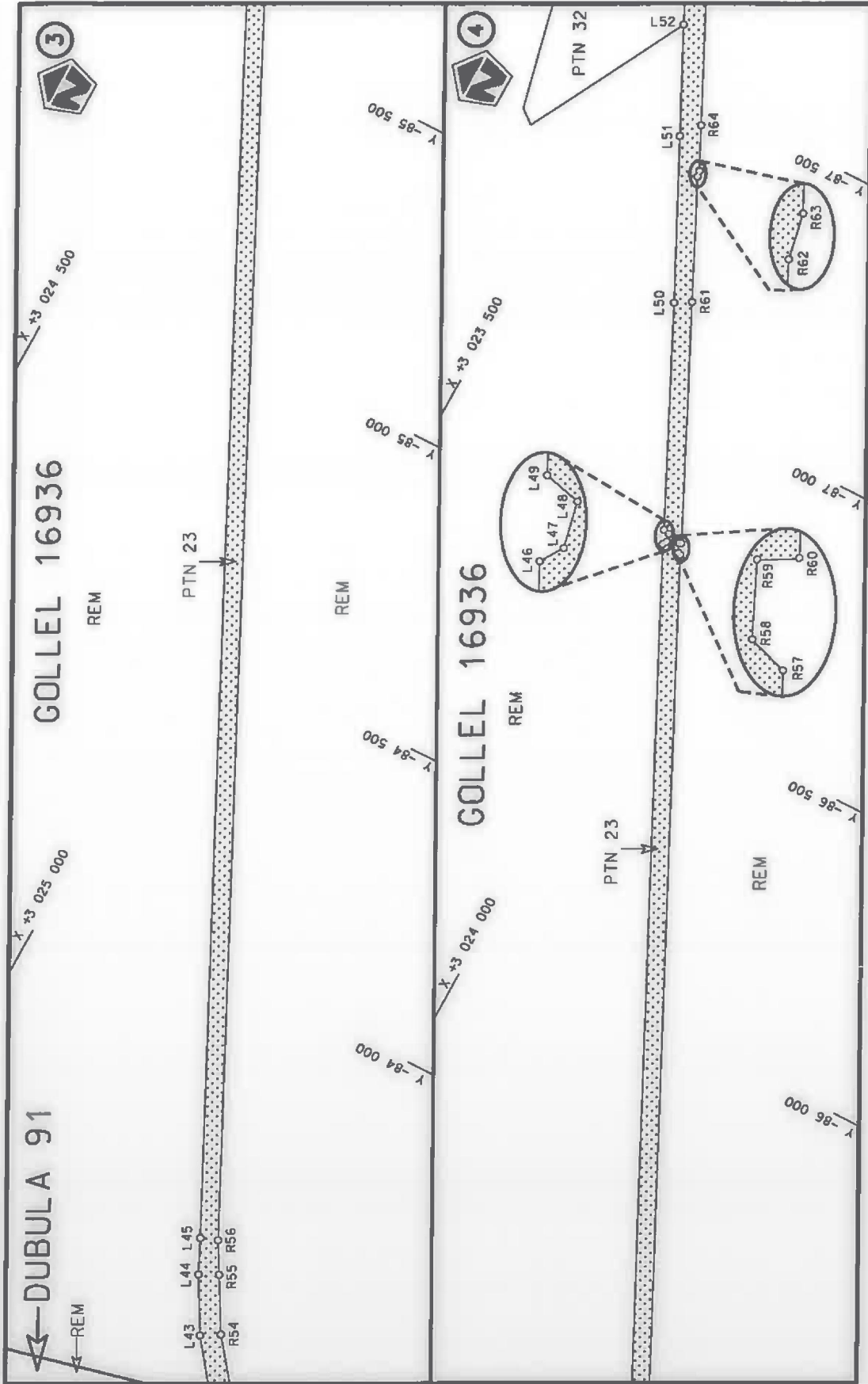
**VERKLARING WYSIGING VAN BESTAANDE NASIONALE PAD P720 SEKSIE 1 AS NASIONALE
PAD R69 SEKSIE 5****WYSIGING VAN VERKLARING No.'s 142 VAN 2008 EN 923 OF 2010**

Kragtens Artikel 40(1)(b) van die Suid-Afrikaanse Nasionale Padagentskap Beperk en Nasionale Paaie Wet 1998 (Wet No.7 van 1998), wysig ek hiermee Verklaring No.'s 142 van 2008 en 923 van 2010 deur die roetenommer te verander vanaf Nasionale Pad P720 Seksie 1 na Nasionale Pad R69 Seksie 5 en deur dit in sy geheel te vervang, met bygaande velle 1 tot 5 van Plan No. P1063/18.

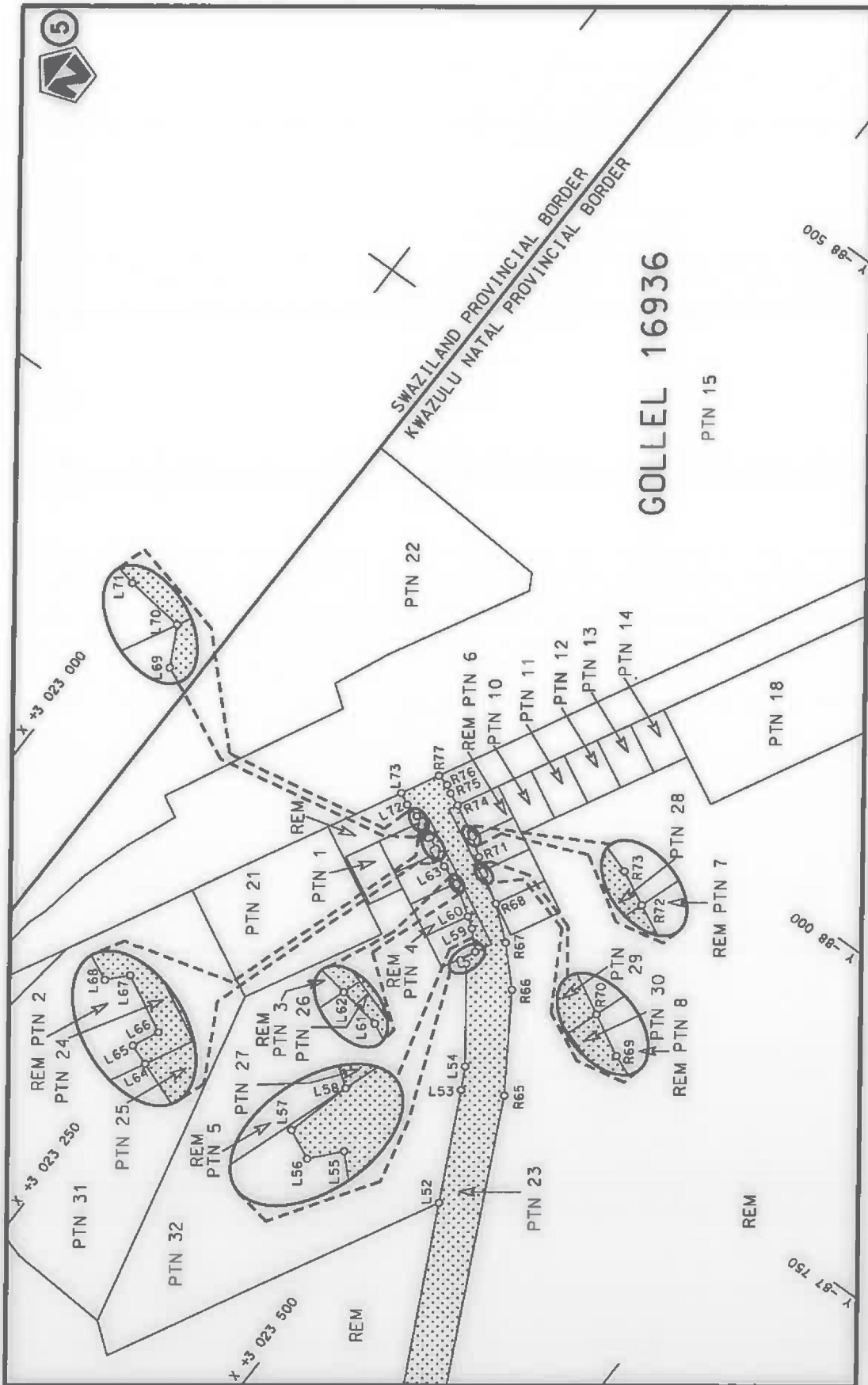
(Nasionale Pad R69 Seksie 5: N2 Aansluiting – Golela Grenspos)
MINISTER VAN VERVOER



<p>Die Suid Afrikaanse Nasionale Padagentskap MSB Bpk The South African National Roads Agency SOC Ltd</p>	<p>Die figuur getoon The figure shown</p>	<p>stelt die padreserwe voor van 'n gedeelte represents the road reserve of a portion van Nasionale Roete R69 of National Route</p>	<p>Vel Sheet 1 of 5 Plan P1063/18</p>
---	---	---	---



<p>Die Suid Afrikaanse Nasionale Padagentskap MSB Bpk The South African National Roads Agency SOC Ltd</p>	<p>Die figuur getoon The figure shown</p>	<p>steldie padreserwe voor van 'n gedeelte represents the road reserve of a portion van Nasionale Roete R69 Sektie of National Route R69 Section</p>	<p>Vel Sheet 2 of 5 Plan P1063/18</p>
---	---	--	---



<p>Die Suid Afrikaanse Nasionale Padagentskap MSB Bpk The South African National Roads Agency SOC Ltd</p>	<p>Die figuur getoon The figure shown</p>	<p>stel die padreserwe voor van 'n gedeelte represents the road reserve of a portion van Nasionale Roete R69 of National Route R69</p>	<p>Seksie Section</p>	<p>5</p>	<p>Plan P1063/18</p>	<p>Vel Sheet 3 of 5</p>
---	---	--	---------------------------	----------	--------------------------	-----------------------------

PADRESERWE KOÖRDINATE / ROAD RESERVE CO-ORDINATES						
LINKERKANT/LEFT HAND SIDE			REGTERKANT/RIGHT HAND SIDE			
	Y	X	WG 31°		Y	X
L1	-80 727.46	3 029 070.40		R1	-80 741.24	3 029 107.92
L2	-80 866.52	3 029 044.32		R2	-80 872.08	3 029 083.38
L3	-80 964.55	3 029 023.41		R3	-81 019.18	3 029 042.75
L4	-81 058.36	3 028 990.45		R4	-81 089.03	3 029 014.37
L5	-81 144.46	3 028 940.33		R5	-81 159.38	3 028 971.73
L6	-81 210.11	3 028 882.21		R6	-81 217.98	3 028 922.76
L7	-81 342.75	3 028 725.31		R7	-81 251.48	3 028 894.77
L8	-81 529.72	3 028 484.85		R8	-81 277.39	3 028 868.35
L9	-81 624.21	3 028 362.91		R9	-81 304.15	3 028 835.92
L10	-81 663.49	3 028 307.03		R10	-81 465.91	3 028 627.79
L11	-81 694.15	3 028 250.43		R11	-81 652.62	3 028 387.43
L12	-81 731.53	3 028 144.24		R12	-81 690.40	3 028 331.08
L13	-81 760.40	3 028 039.57		R13	-81 696.14	3 028 323.05
L14	-81 802.64	3 027 951.81		R14	-81 728.00	3 028 263.13
L15	-81 851.53	3 027 887.61		R15	-81 736.80	3 028 244.15
L16	-81 946.08	3 027 789.74		R16	-81 757.84	3 028 198.65
L17	-81 996.22	3 027 676.66		R17	-81 771.22	3 028 132.24
L18	-82 035.99	3 027 517.20		R18	-81 785.37	3 028 080.21
L19	-82 067.64	3 027 434.49		R19	-81 806.36	3 028 021.76
L20	-82 077.52	3 027 414.14		R20	-81 835.93	3 027 970.26
L21	-82 106.02	3 027 354.31		R21	-81 870.09	3 027 928.57
L22	-82 161.15	3 027 288.07		R22	-81 935.48	3 027 860.21
L23	-82 232.84	3 027 206.81		R23	-81 983.82	3 027 799.01
L24	-82 261.00	3 027 175.02		R24	-82 018.95	3 027 725.76
L25	-82 397.52	3 027 020.13		R25	-82 033.62	3 027 675.82
L26	-82 454.30	3 026 944.06		R26	-82 054.48	3 027 579.59
L27	-82 488.72	3 026 881.60		R27	-82 079.26	3 027 492.86
L28	-82 516.59	3 026 810.64		R28	-82 105.31	3 027 436.13
L29	-82 529.02	3 026 765.91		R29	-82 173.15	3 027 331.54
L30	-82 571.37	3 026 588.33		R30	-82 322.08	3 027 173.65
L31	-82 592.72	3 026 514.84		R31	-82 327.60	3 027 164.14
L32	-82 610.77	3 026 463.55		R32	-82 389.18	3 027 086.17
L33	-82 631.68	3 026 419.66		R33	-82 425.24	3 027 045.17
L34	-82 672.99	3 026 346.41		R34	-82 486.00	3 026 964.21
L35	-82 687.96	3 026 323.76		R35	-82 525.23	3 026 898.07
L36	-82 762.66	3 026 233.92		R36	-82 552.11	3 026 822.33
L37	-82 824.43	3 026 168.07		R37	-82 565.58	3 026 774.59
L38	-82 958.73	3 026 024.99		R38	-82 589.70	3 026 672.52
L39	-83 168.31	3 025 803.34		R39	-82 607.74	3 026 596.74
L40	-83 224.57	3 025 743.23		R40	-82 625.57	3 026 535.39
L41	-83 275.55	3 025 693.40		R41	-82 628.14	3 026 527.47
L42	-83 305.40	3 025 667.97		R42	-82 639.77	3 026 494.92
L43	-83 399.02	3 025 597.57		R43	-82 654.99	3 026 458.36
L44	-83 494.81	3 025 543.94		R44	-82 690.01	3 026 393.16
L45	-83 554.39	3 025 515.96		R45	-82 730.26	3 026 332.97
L46	-86 766.28	3 023 946.04		R46	-82 788.33	3 026 261.29
L47	-86 772.93	3 023 950.21		R47	-82 881.83	3 026 161.69
L48	-86 787.04	3 023 947.12		R48	-82 985.61	3 026 050.99
L49	-86 789.95	3 023 935.76		R49	-83 066.16	3 025 965.80
L50	-87 157.37	3 023 759.10		R50	-83 100.75	3 025 928.92
L51	-87 425.47	3 023 626.55		R51	-83 190.71	3 025 831.26

Vel
Sheet

4

Van
of

5

P1063/18

PADRESERWE KOÖRDINATE / ROAD RESERVE CO-ORDINATES

LINKERKANT/LEFT HAND SIDE				REGTERKANT/RIGHT HAND SIDE			
	Y	X	WG 31°		Y	X	
L52	-87 604.48	3 023	537.88	R52	-83 249.66	3 025	768.73
L53	-87 696.87	3 023	492.11	R53	-83 314.49	3 025	707.85
L54	-87 715.97	3 023	482.11	R54	-83 417.08	3 025	628.58
L55	-87 790.43	3 023	427.22	R55	-83 510.69	3 025	575.67
L56	-87 787.88	3 023	424.11	R56	-83 564.68	3 025	545.14
L57	-87 789.98	3 023	421.11	R57	-86 763.13	3 023	981.94
L58	-87 803.63	3 023	427.01	R58	-86 764.60	3 023	977.39
L59	-87 818.58	3 023	412.11	R59	-86 780.56	3 023	970.08
L60	-87 825.16	3 023	402.75	R60	-86 782.81	3 023	974.07
L61	-87 842.47	3 023	378.11	R61	-87 172.61	3 023	786.05
L62	-87 843.01	3 023	376.57	R62	-87 375.42	3 023	688.16
L63	-87 849.08	3 023	359.11	R63	-87 385.87	3 023	686.10
L64	-87 853.75	3 023	346.67	R64	-87 459.34	3 023	650.08
L65	-87 855.14	3 023	342.97	R65	-87 715.09	3 023	525.07
L66	-87 857.58	3 023	344.11	R66	-87 795.20	3 023	473.11
L67	-87 862.88	3 023	334.01	R67	-87 825.78	3 023	443.11
L68	-87 861.28	3 023	332.51	R68	-87 848.84	3 023	415.15
L69	-87 866.08	3 023	322.11	R69	-87 863.48	3 023	391.11
L70	-87 870.41	3 023	319.86	R70	-87 865.59	3 023	388.39
L71	-87 871.28	3 023	313.11	R71	-87 873.58	3 023	378.11
L72	-87 874.48	3 023	300.11	R72	-87 884.63	3 023	362.83
L73	-87 879.87	3 023	289.82	R73	-87 885.88	3 023	361.11
				R74	-87 899.91	3 023	335.31
				R75	-87 904.78	3 023	324.11
				R76	-87 909.08	3 023	317.11
				R77	-87 911.59	3 023	306.40

Vel
Sheet

5

Van
of

5

P1063/18