

DEPARTMENT OF TRANSPORT

NO. 420

15 MARCH 2019

**THE SOUTH AFRICAN NATIONAL ROADS
AGENCY SOC LIMITED**

Registration No: 1998/009584/30

DECLARATION AMENDMENT OF NATIONAL ROAD R31 SECTION 1

AMENDMENT OF DECLARATION No.'s 1392 OF 1996, 595 OF 1998 AND 230 OF 2018.

By virtue of Section 40 (1)(b) of The South African National Roads Agency Limited and National Roads Act, 1998 (Act No. 7 of 1998), I hereby amend (I) Declaration No. 1392 of 1996 in its entirety, (II) Declaration No. 595 of 1998 in its entirety, (III) Declaration No. 230 of 2018 in its entirety, by substituting all sheets of their respective Plans with the accompanying sheets 1 to 22 of Plan No. P939/17.

In the town of Rietfontein the R31 section 1 enters the town from the West and follows the street known as Namibia Way at the time of publication.

(National Road R31 Section 1: Rietfontein Border Post - Askham)



MINISTER OF TRANSPORT

DEPARTEMENT VAN VERVOER

NO. 420

15 MAART 2019

**DIE SUID-AFRIKAANSE NASIONALE
PADAGENTSKAP MSB BEPERK**

Registrasie No: 1998/009584/30

VERKLARING WYSIGING VAN NASIONALE PAD R31 SEKSIE 1

WYSIGING VAN VERKLARING No.'s 1392 VAN 1996, 595 VAN 1998 EN 230 VAN 2018.

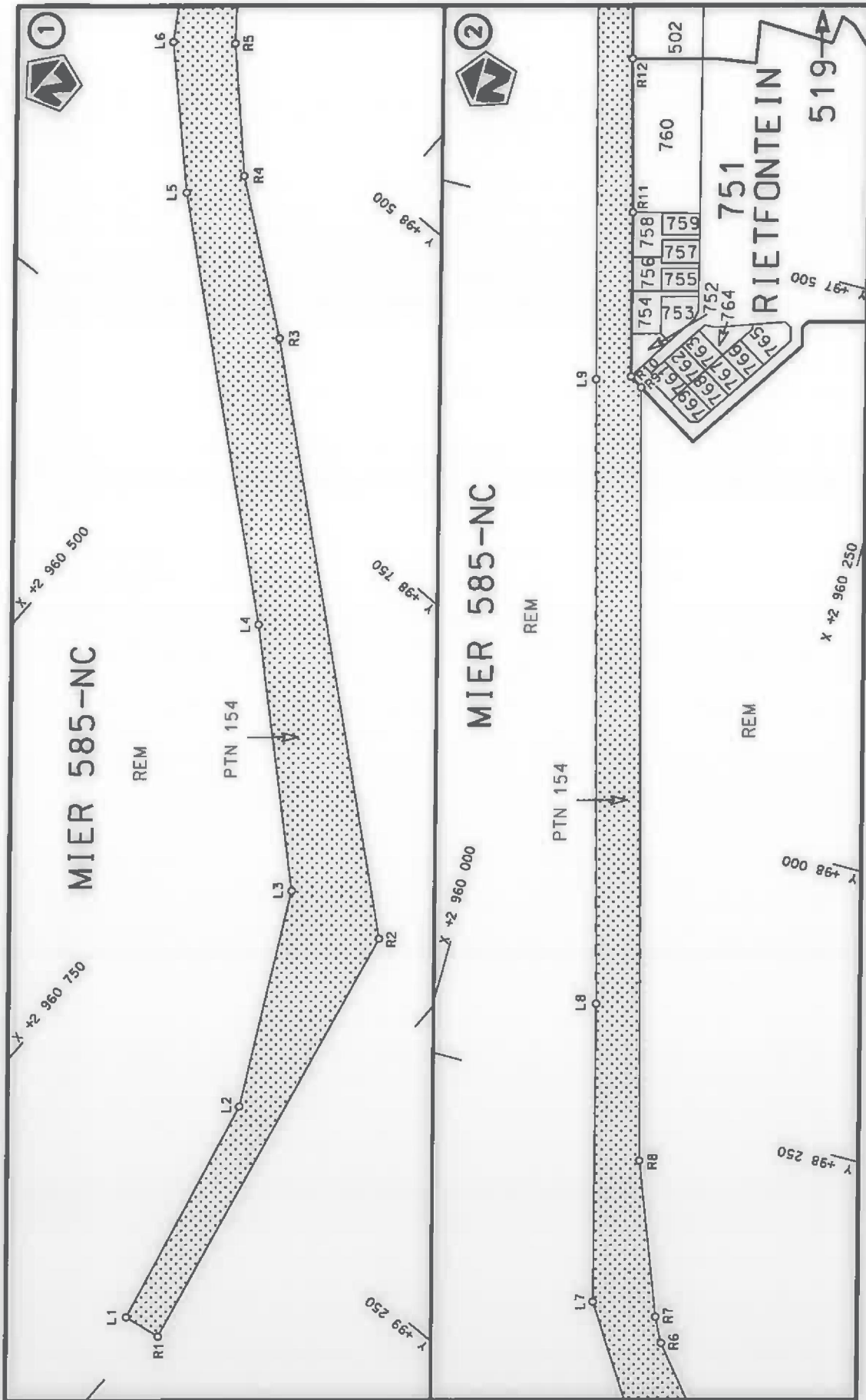
Kragtens Artikel 40(1)(b) van die Wet op die Suid-Afrikaanse Nasionale Padagentskap Beperk en op Nasionale Paaie, 1998 (Wet No. 7 van 1998), wysig ek hiermee (I) Verklaring No. 1392 van 1996 in sy geheel, (II) Verklaring No. 595 van 1998 in sy geheel, (III) Verklaring No. 230 van 2018 in sy geheel, deur alle velle van hulle respektiewelike Planne te vervang met meegaande velle 1 tot 22 van Plan No. P939/17.

In die dorp van Rietfontein kom die R31 seksie 1 die dorp binne vanuit die Weste en volg die straat bekend as Namibië Weg tydens datum van verklaring

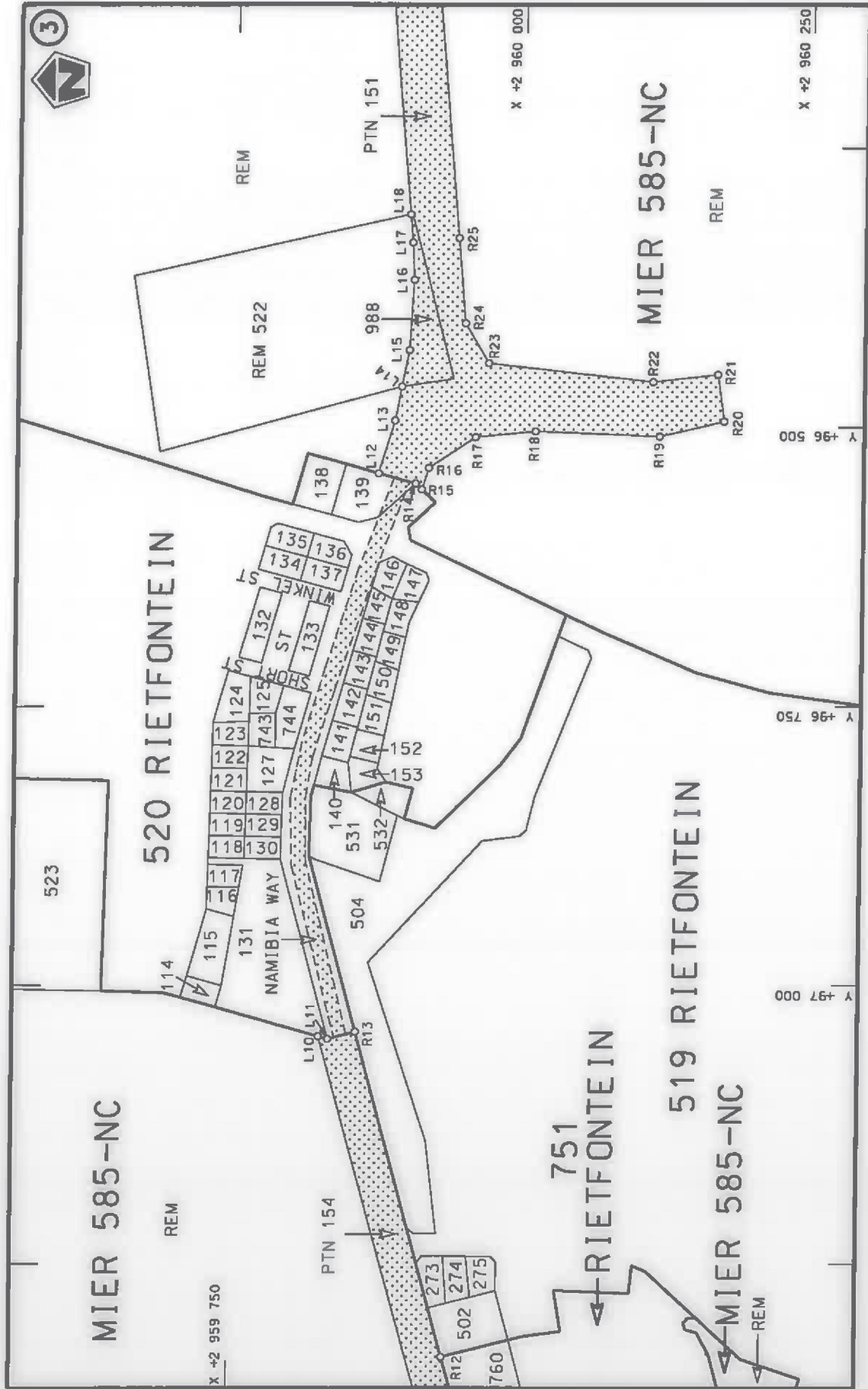
(Nasionale Pad R31 Seksie 1: Rietfontein Grenspos – Askham)



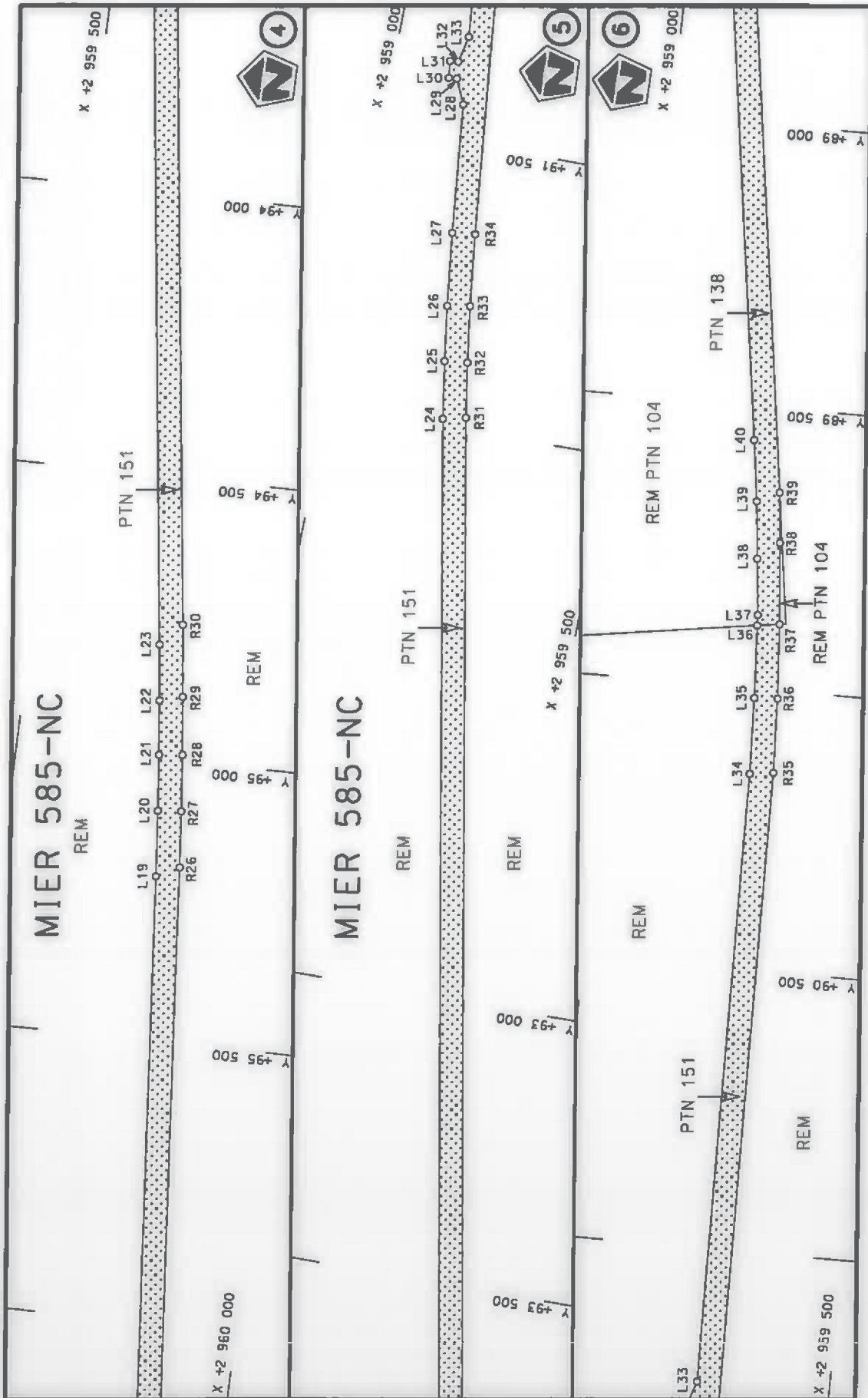
MINISTER VAN VERVOER



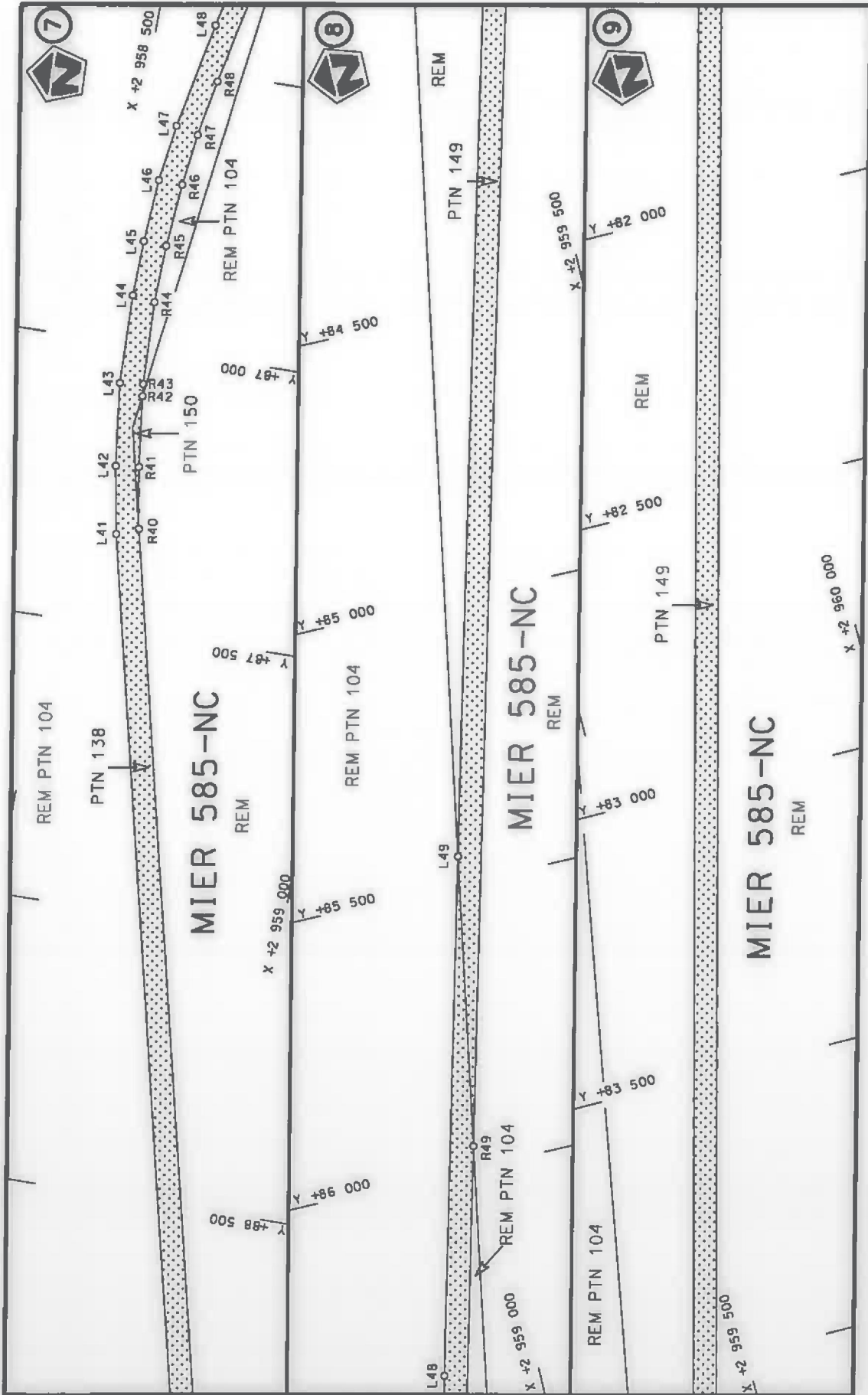
Vel Sheet 1 of 22 Plan P939/17	stel die podreserwe voor van 'n gedeelte represents the road reserve of a portion van Nasionale Roete R31 Seksie 1 of National Route Section	Die Suid Afrikaanse Nasionale Padagentskap MSB Bpk The South African National Roads Agency SOC Ltd
--------------------------------------	---	---



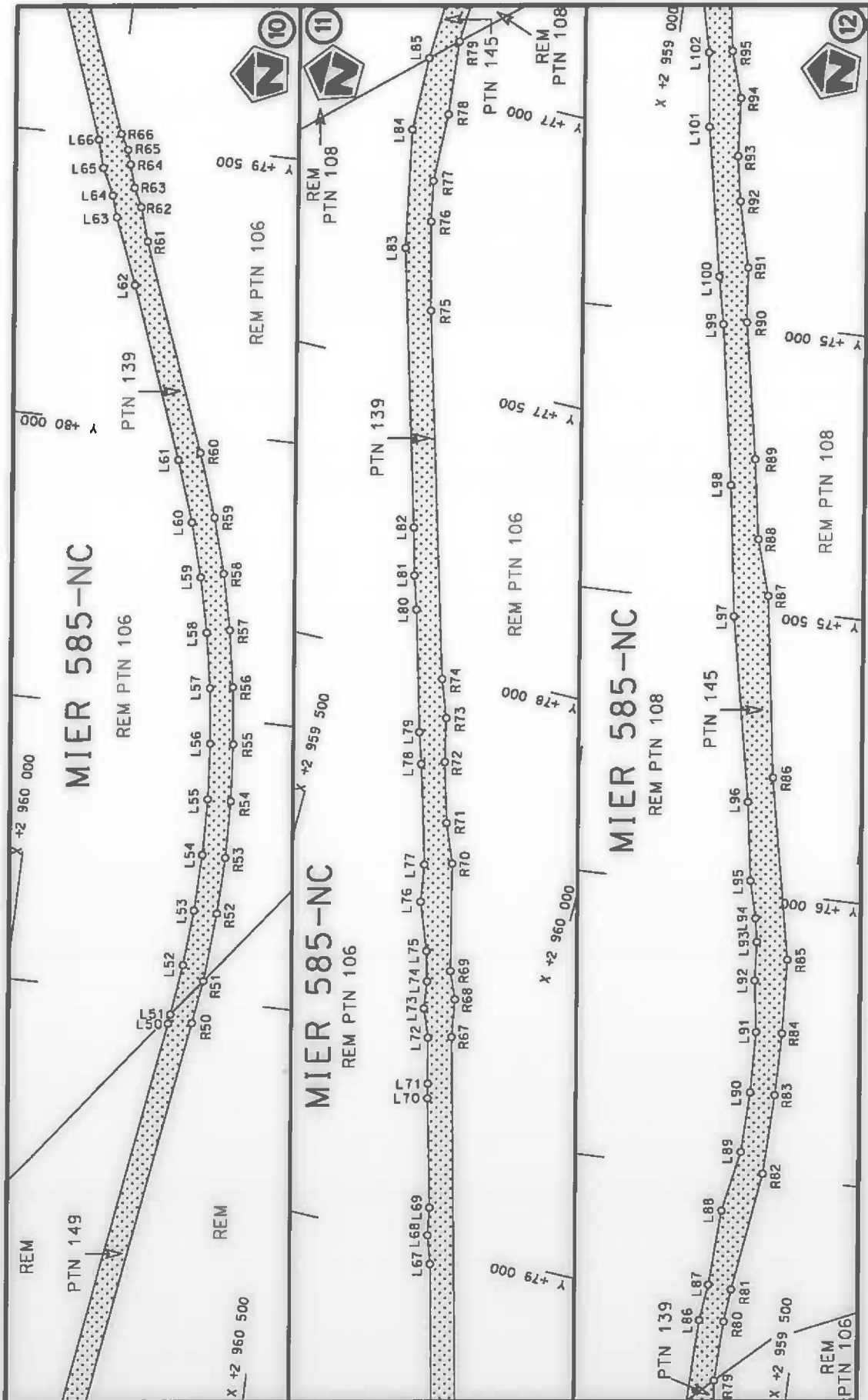
<p>Die Suid Afrikaanse Nasionale Padagentskop MSB Bpk The South African National Roads Agency SOC Ltd</p>	<p>Die figuur getoon The figure shown</p>	<p>stelt die padreserwe voor van 'n gedeelte represents the road reserve of a portion van Nasionale Roete R31 Sektie of National Route R31 Section</p>	<p>Vel van Sheet 2 of 22 Plan P939/17</p>
---	---	--	---

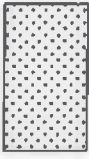


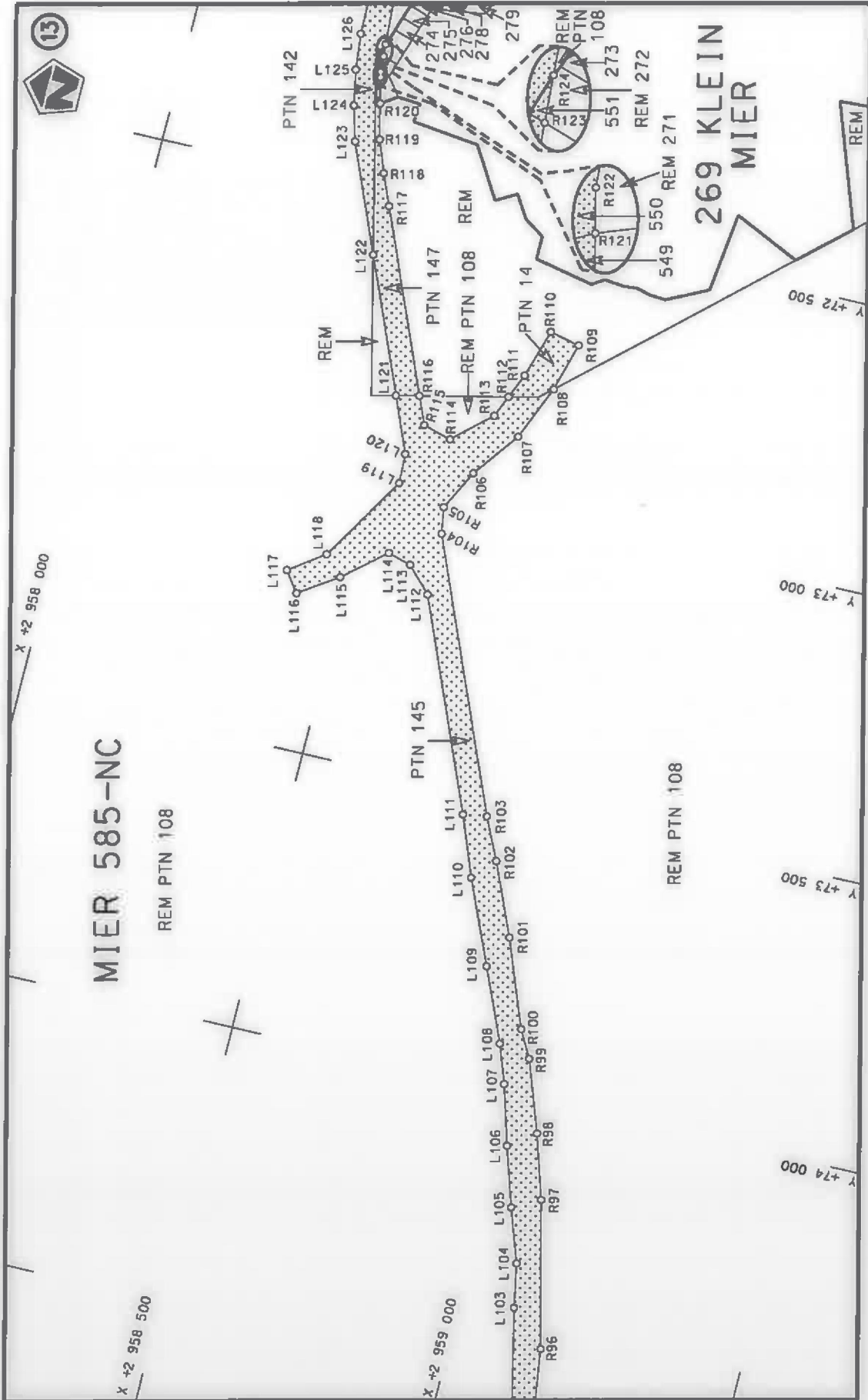
<p>Die Suid Afrikaanse Nasionale Padagentskap MSB Bpk The South African National Road Agency SOC Ltd</p>	<p>Die figuur getoon The figure shown</p>	<p>stel die padreserwe voor van 'n gedeelte represents the road reserve of a portion van Nasionale Roete R31 of National Route</p>	<p>Vel Sheet 3 of 22</p>
<p>Die figuur getoon The figure shown</p>		<p>stel die padreserwe voor van 'n gedeelte represents the road reserve of a portion van Nasionale Roete R31 of National Route</p>	<p>Plan P939/17</p>



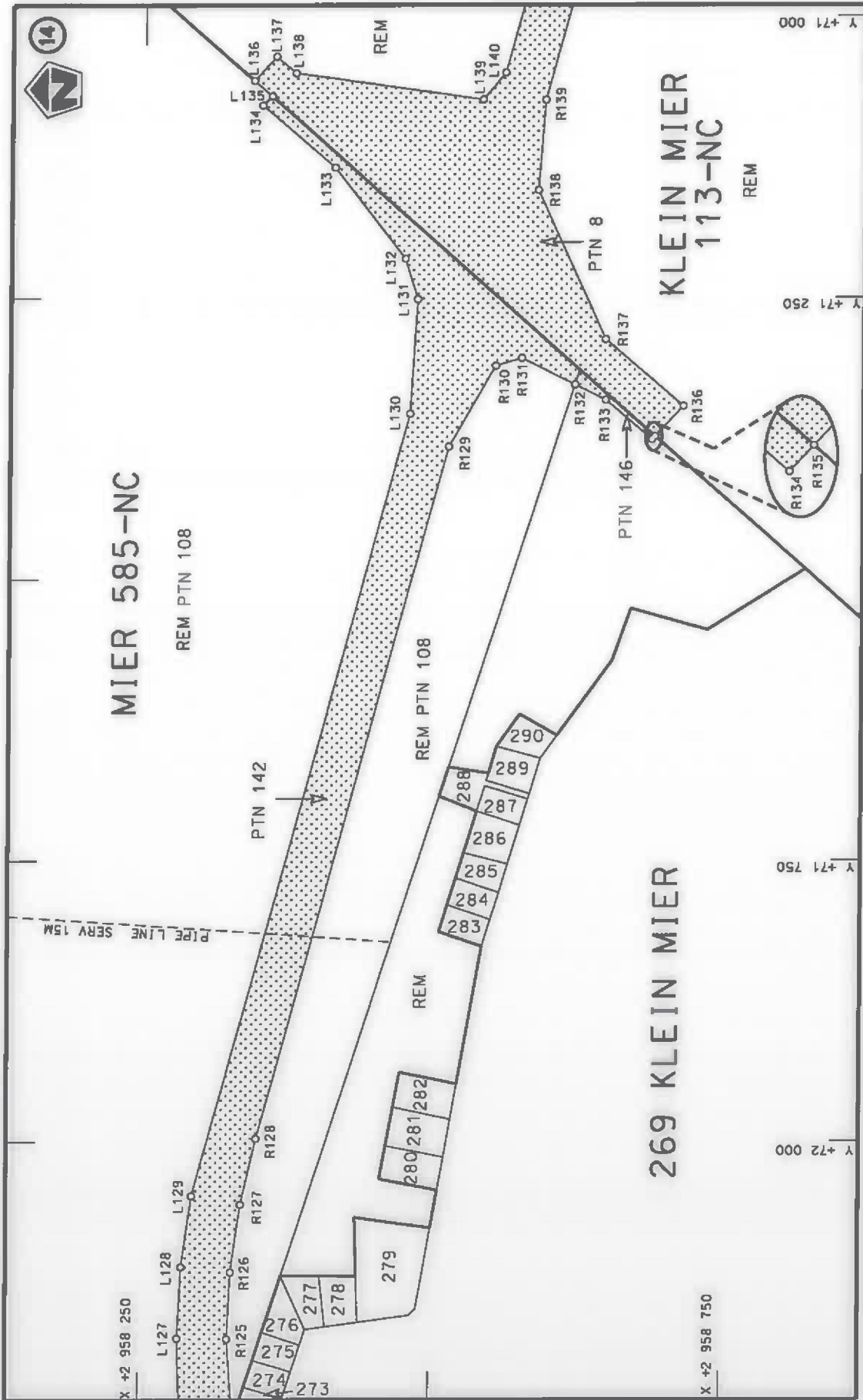
<p>Die Suid Afrikaanse Nasionale Padagentskap MSB Bpk The South African National Roads Agency SOC Ltd</p>	<p>Die figuur getoon The figure shown</p>		<p>steldie podreserwe voor van 'n gedeelte represents the road reserve of a portion van Nasionale Roete R31 of National Route R31</p>	<p>1</p>	<p>Vel Sheet 4 of 22</p>	<p>Plan P939/17</p>
---	---	---	---	----------	----------------------------------	-------------------------



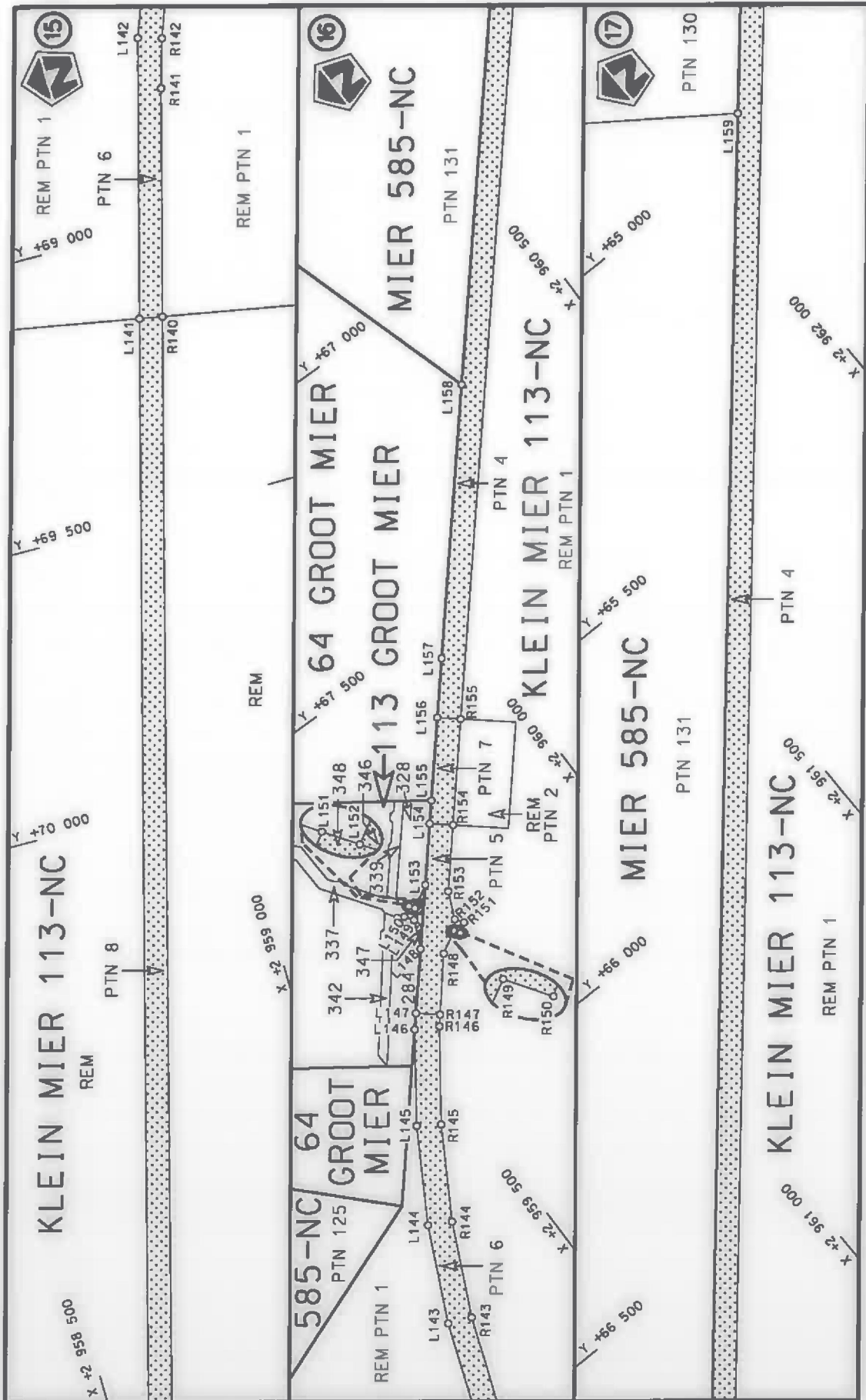
Die Suid Afrikaanse Nasionale Padagentskap MSB Bpk The South African National Roads Agency SOC Ltd	Die figuur getoon The figure shown		steldie padreserwe voor van 'n gedeelte represents the road reserve of a portion van Nasionale Roete R31 of National Route Section	1
			Plan P939/17	Vel Sheet 5 of 22



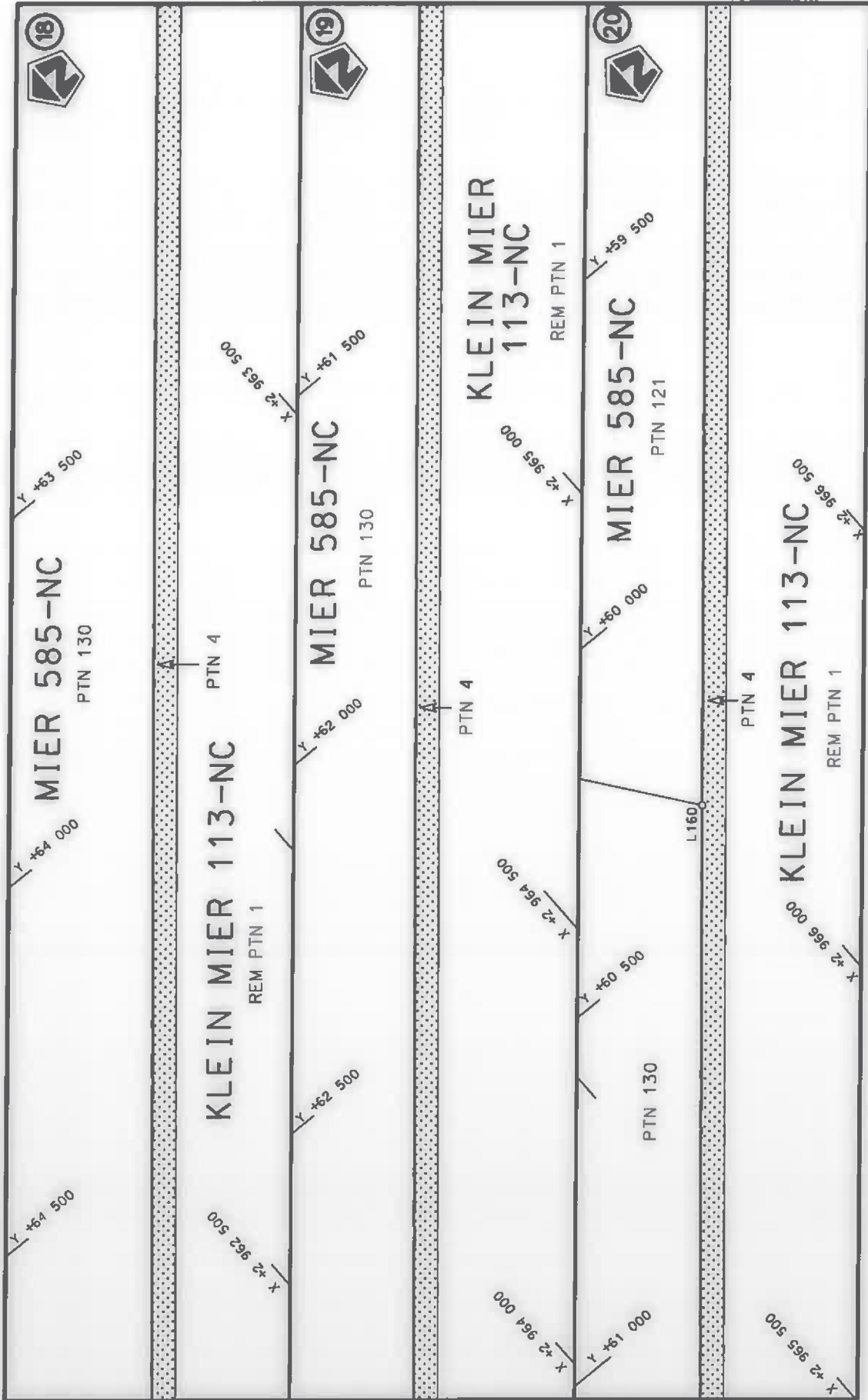
<p>Die Suid-Afrikaanse Nasionale Padagentskop MSB Bpk The South African National Roads Agency SOC Ltd</p>	<p>Die figuur getoon The figure shown</p>	<p>stel die podreserwe voor van 'n gedeelte represents the road reserve of a portion van Nasionale Roete R31 of National Route</p>	<p>Vel Sheet 6 of 22 Plan P939/17</p>
<p>1</p>		<p>Seksie Section</p>	<p>1</p>



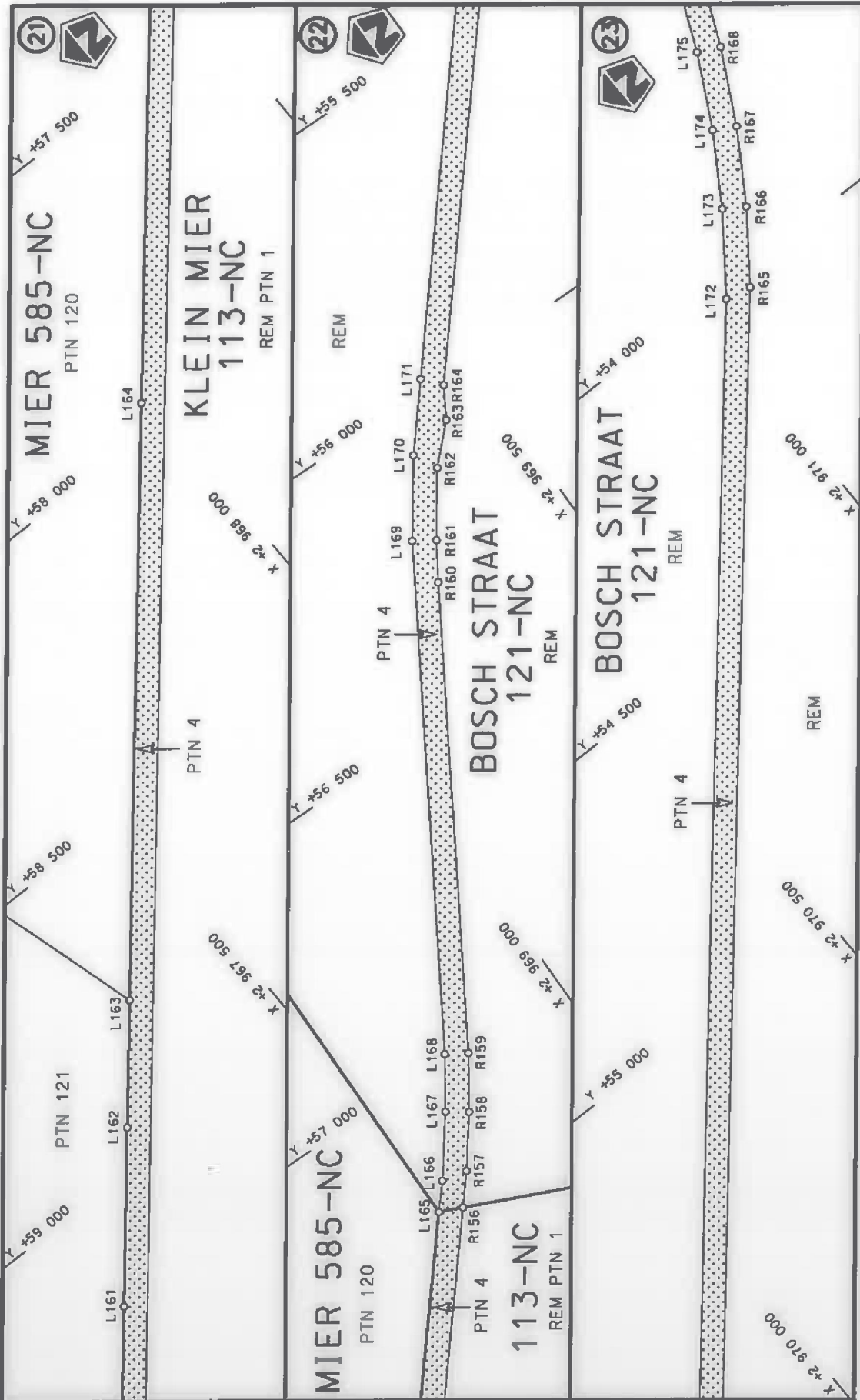
<p>Die Suid Afrikaanse Nasionale Padagentskap MSB Bpk The South African National Roads Agency SOC Ltd</p>	<p>Die figuur getoon The figure shown</p>	<p>stel die podreserwe voor van 'n gedeelte represents the road reserve of a portion van Nasionale Roete R31 of National Route</p>	<p>Vel Sheet 7 of 22</p>	<p>1</p>	<p>Plan P939/17</p>
---	---	--	------------------------------	----------	---------------------




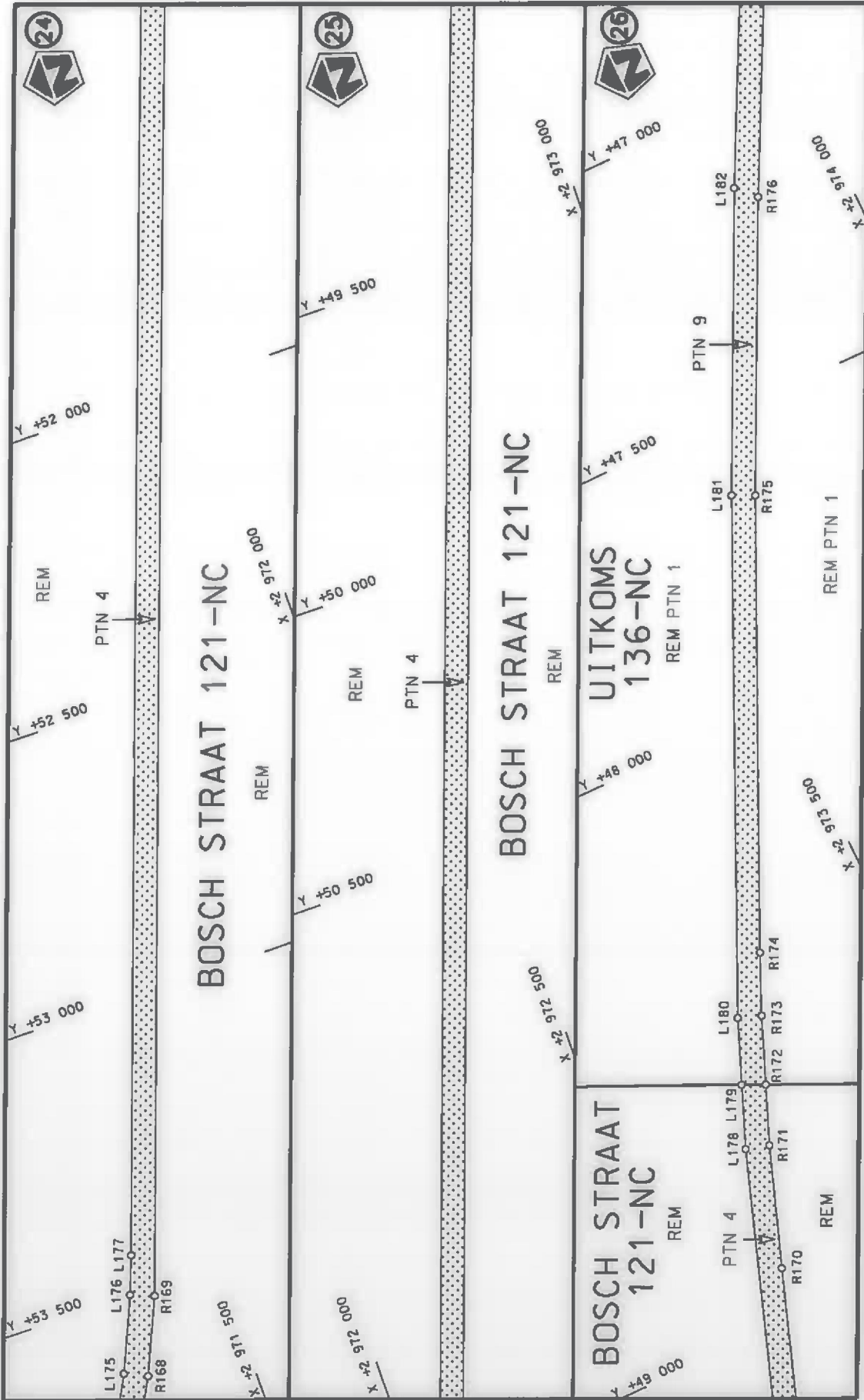
<p>Die Suid Afrikaanse Nasionale Podagentskap MSB Bpk The South African National Roads Agency SOC Ltd</p>	<p>Die figuur getoon The figure shown</p>	<p>stel die padreserwe voor van 'n gedeelte represents the road reserve of a portion van Nasionale Roete R31 of National Route</p>
<p>Vel Sheet 8 of 22</p>	<p>1</p>	<p>Plan P939/17</p>



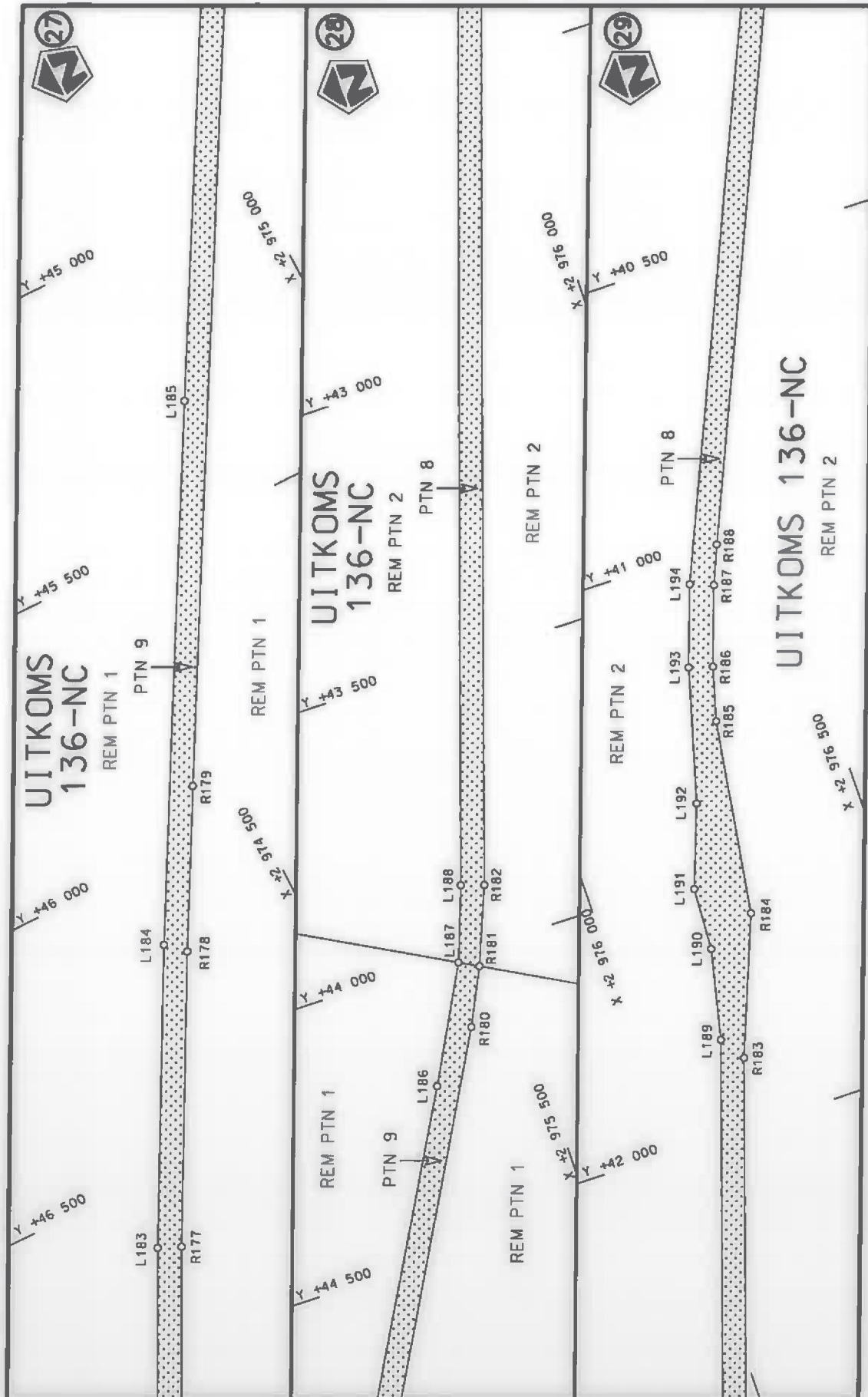
Vel Sheet 9 of 22	steeldie podreserwe voor van 'n gedeelte represents the road reserve of a portion van Nasionale Roete R31 of National Route	 Die figur getoon The figure shown	Die Suid Afrikaanse Nasionale Podagentskap MSB Bpk The South African National Roads Agency SOC Ltd
Plan P939/17	R31 Seksie Section 1		



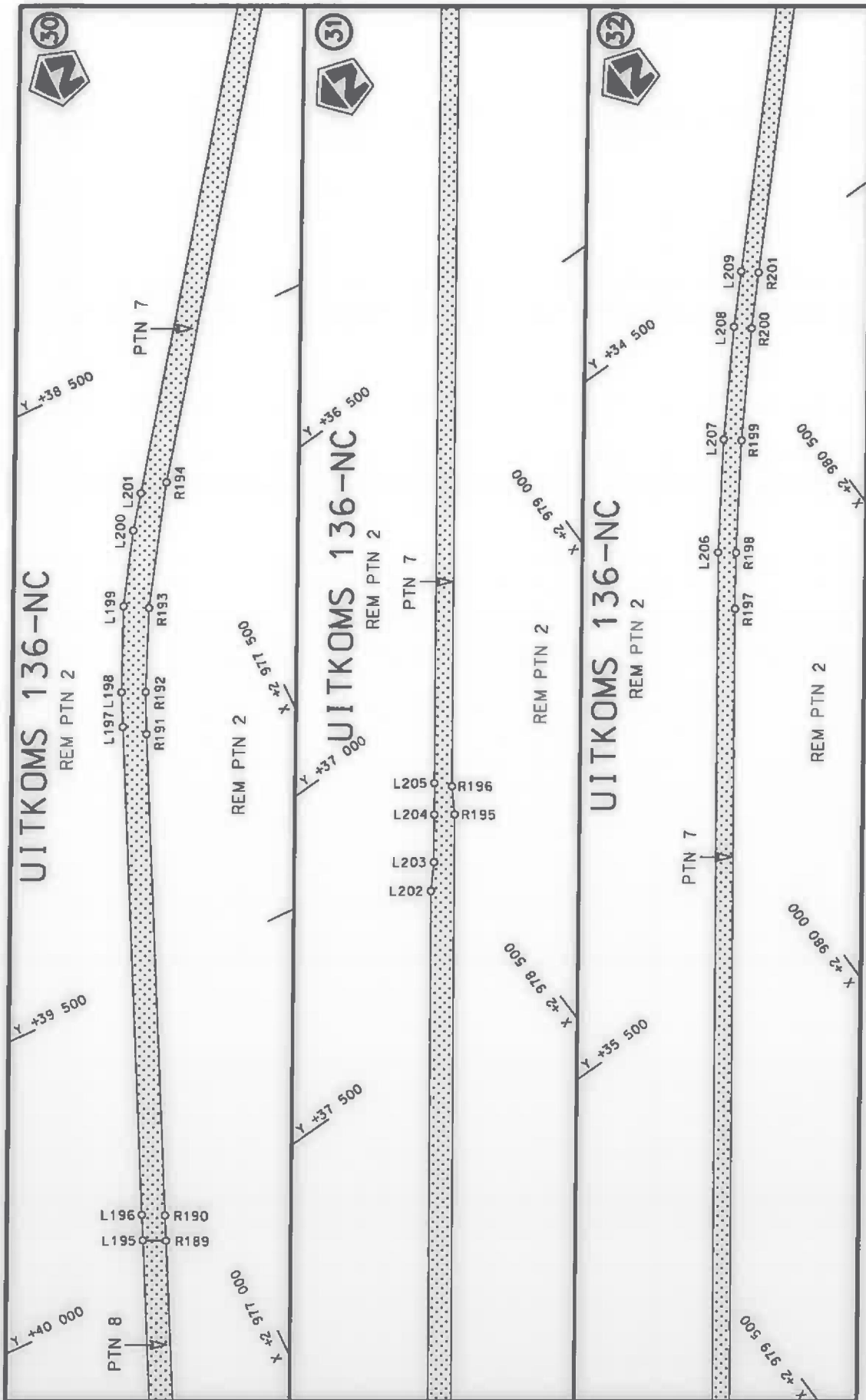
<p>Die Suid Afrikaanse Nasionale Padagentskap MSB Bpk The South African National Roads Agency SOC Ltd</p>	<p>Die figuur getoon The figure shown</p> 	<p>stel die podreserwe voor van 'n gedeelte represents the road reserve of a portion van Nasionale Roete R31 of National Route</p>	<p>Vel van 22 Sheet 10 of Plan P939/17</p>
---	---	--	--



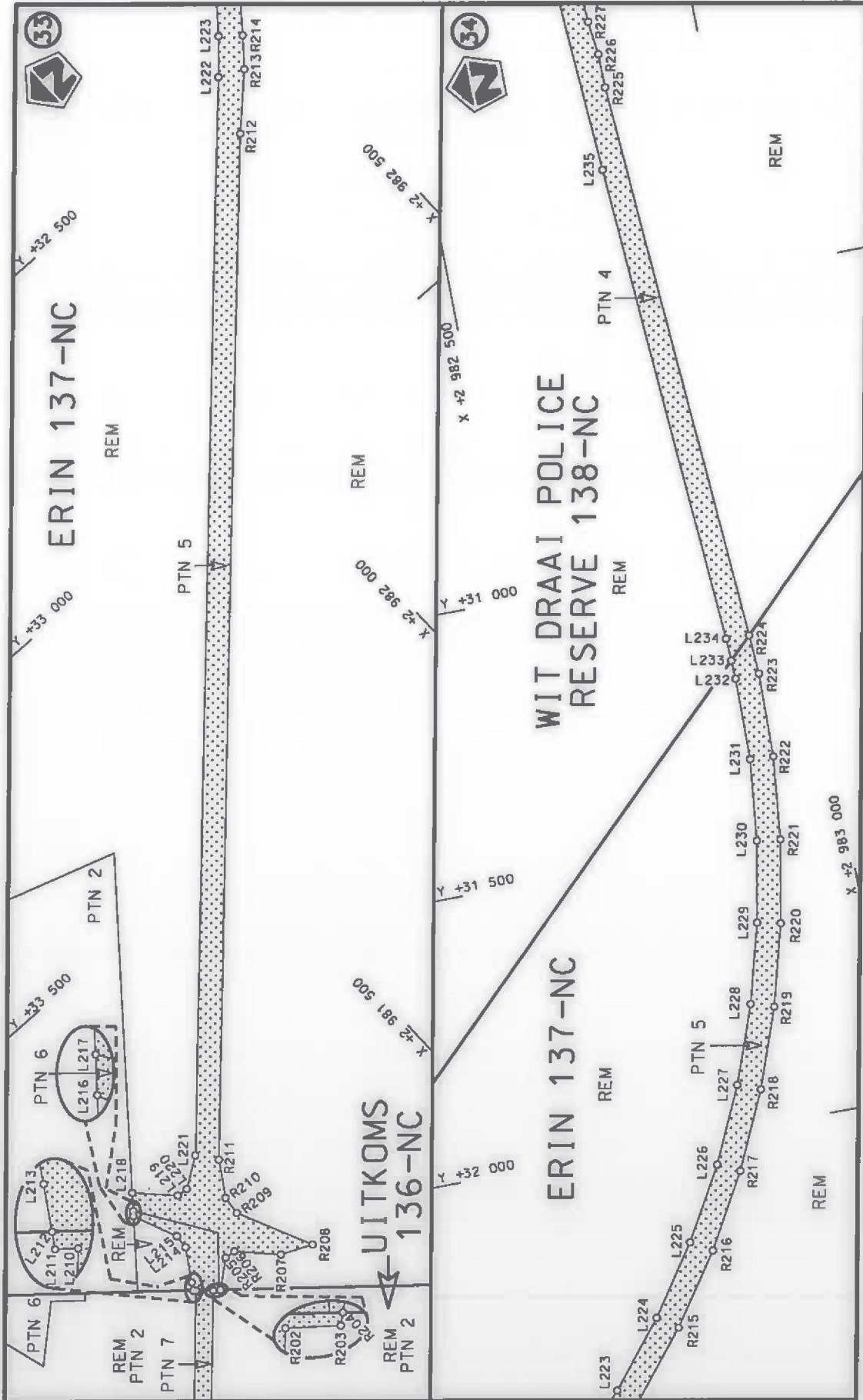
Vel Sheet 11 of 22	steldie padreserwe voor van 'n gedeelte represents the road reserve of a portion van Nasionale Roete R31 of National Route	Die figuur getoon The figure shown	Die Suid Afrikaanse Nasionale Padagentskap MSB Bpk The South African National Roads Agency SOC Ltd
Plan P939/17	1	R31 Seksie Section	1



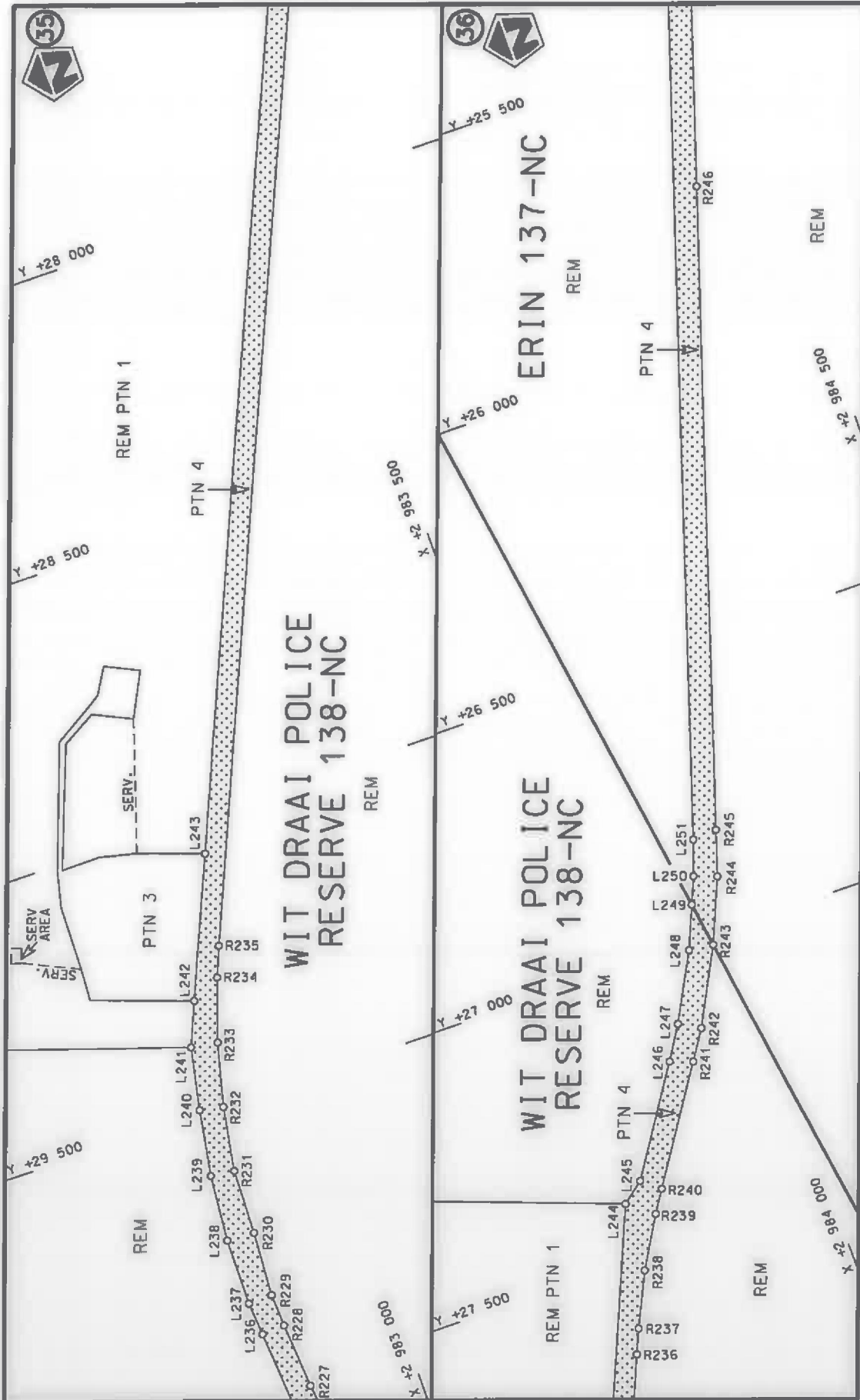
<p>Die Suid Afrikaanse Nasionale Padagentskop MSB Bpk The South African National Roads Agency SOC Ltd</p>	<p>Die figuur getoon The figure shown</p>	<p>stelt die padreserwe voor van 'n gedeelte represents the road reserve of a portion van Nasionale Roete R31 of National Route R31</p> <p>Seksie Section</p> <p>1</p>	<p>Vel Sheet</p> <p>12 of</p> <p>22</p> <p>Plan P939/17</p>
---	---	--	---



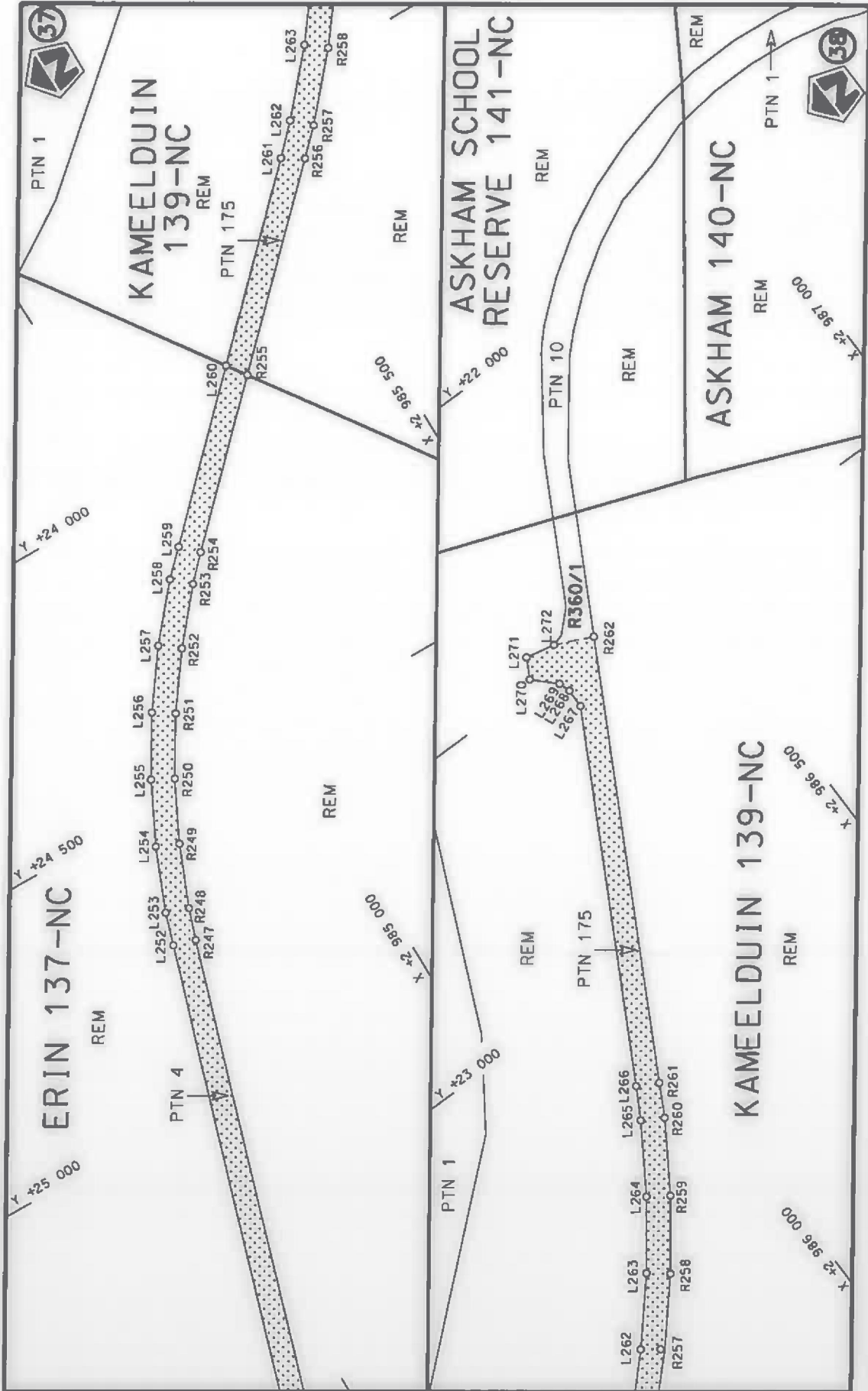
<p>Die Suid Afrikaanse Nasionale Padagentskap MSB Bpk The South African National Roads Agency SOC Ltd</p>	<p>Die figuur getoon The figure shown</p> 	<p>stel die padreserwe voor van 'n gedeelte represents the road reserve of a portion van Nasionale Roete R31 of National Route</p> <p>R31 Seksie Section</p> <p>1</p>	<p>Vel Sheet 13 of 22</p> <p>Plan P939/17</p>
---	---	---	---



Vel Sheet 14 of 22	stel die padreserwe voor van 'n gedeelte represents the road reserve of a portion van Nasionale Roete R31 of National Route	Die figuur getoon The figure shown	Die Suid Afrikaanse Nasionale Padagentskop MSB Bpk The South African National Roads Agency SOC Ltd
Plan P939/17	1	Section	Section



Vel Sheet 15 of 22	stel die padreserwe voor van 'n gedeelte represents the road reserve of a portion van Nasionale Roete R31 of National Route	Die Suid Afrikaanse Nasionale Padagentskap MSB Bpk The South African National Roads Agency SOC Ltd
Plan P939/17	1 Seksie Section	Die figuur getoon The figure shown



<p>Die Suid Afrikaanse Nasionale Padagentskap MSB Bpk The South African National Roads Agency SOC Ltd</p>	<p>Die figuur getoon The figure shown</p> 	<p>steldie padreserwe voor van 'n gedeelte represents the road reserve of a portion van Nasionale Roete R31 of National Route</p> <p>Seksie Section</p> <p>1</p>	<p>Vel Sheet</p> <p>16 of 22</p> <p>Plan P939/17</p>
---	---	--	--

PADRESERWE KOÖRDINATE / ROAD RESERVE CO-ORDINATES						
LINKERKANT/LEFT HAND SIDE				REGTERKANT/RIGHT HAND SIDE		
	Y	X	WG 21°		Y	X
L1	99 403.14	2 960	978.26	R1	99 398.72	2 961 010.22
L2	99 198.20	2 960	930.50	R2	99 007.28	2 960 925.16
L3	99 023.75	2 960	839.90	R3	98 658.68	2 960 510.92
L4	98 862.65	2 960	663.49	R4	98 569.23	2 960 393.39
L5	98 612.52	2 960	365.09	R5	98 485.29	2 960 310.58
L6	98 518.72	2 960	268.85	R6	98 428.54	2 960 265.09
L7	98 407.95	2 960	198.02	R7	98 407.17	2 960 254.24
L8	98 151.31	2 960	130.64	R8	98 276.44	2 960 204.04
L9	97 616.13	2 959	983.06	R9	97 613.12	2 960 023.06
L10	97 045.82	2 959	828.08	R10	97 606.03	2 960 011.98
L11	97 048.19	2 959	836.45	R11	97 465.03	2 959 974.50
L12	96 541.37	2 959	875.63	R12	97 333.82	2 959 937.85
L13	96 494.03	2 959	889.49	R13	97 041.79	2 959 860.61
L14	96 463.66	2 959	895.17	R14	96 550.32	2 959 907.88
L15	96 431.09	2 959	901.27	R15	96 555.72	2 959 913.19
L16	96 368.16	2 959	904.85	R16	96 536.42	2 959 919.15
L17	96 334.68	2 959	903.20	R17	96 509.00	2 959 959.32
L18	96 309.57	2 959	901.05	R18	96 503.59	2 960 011.22
L19	95 204.39	2 959	806.35	R19	96 508.27	2 960 118.61
L20	95 088.13	2 959	795.71	R20	96 494.70	2 960 174.75
L21	94 988.99	2 959	785.60	R21	96 452.84	2 960 168.83
L22	94 892.92	2 959	774.92	R22	96 459.43	2 960 112.27
L23	94 794.19	2 959	762.89	R23	96 442.62	2 959 970.11
L24	91 916.31	2 959	385.63	R24	96 407.02	2 959 949.51
L25	91 814.42	2 959	374.55	R25	96 330.74	2 959 943.01
L26	91 716.77	2 959	366.05	R26	95 184.27	2 959 844.72
L27	91 587.24	2 959	357.13	R27	95 084.74	2 959 835.39
L28	91 358.84	2 959	344.81	R28	94 984.85	2 959 825.33
L29	91 314.75	2 959	327.47	R29	94 882.47	2 959 813.44
L30	91 315.34	2 959	313.57	R30	94 755.06	2 959 797.89
L31	91 285.47	2 959	311.77	R31	91 909.44	2 959 425.21
L32	91 284.74	2 959	325.82	R32	91 812.14	2 959 414.50
L33	91 238.93	2 959	338.31	R33	91 712.15	2 959 405.52
L34	90 154.66	2 959	279.56	R34	91 584.94	2 959 396.97
L35	90 019.73	2 959	268.61	R35	90 147.59	2 959 319.54
L36	89 891.20	2 959	255.91	R36	90 015.91	2 959 308.87
L37	89 872.76	2 959	254.08	R37	89 884.06	2 959 294.04
L38	89 773.68	2 959	239.57	R38	89 741.06	2 959 274.90
L39	89 672.79	2 959	224.56	R39	89 652.30	2 959 261.98
L40	89 565.39	2 959	205.04	R40	87 269.78	2 958 814.75
L41	87 283.41	2 958	776.76	R41	87 160.51	2 958 800.71
L42	87 162.91	2 958	760.79	R42	87 034.45	2 958 791.05
L43	87 015.76	2 958	749.43	R43	87 012.92	2 958 789.40
L44	86 858.25	2 958	751.94	R44	86 865.91	2 958 791.12
L45	86 760.53	2 958	758.54	R45	86 764.28	2 958 798.36
L46	86 649.73	2 958	771.13	R46	86 652.93	2 958 812.18
L47	86 550.25	2 958	788.86	R47	86 562.10	2 958 828.00
L48	86 365.13	2 958	834.11	R48	86 463.92	2 958 850.35
L49	85 465.33	2 959	062.35	R49	85 976.10	2 958 974.04
L50	81 040.82	2 960	184.64	R50	81 039.66	2 960 225.64
L51	81 024.36	2 960	188.38	R51	80 964.65	2 960 243.88

Vel Sheet 17 Van of 22

P939/17

PADRESERWE KOÖRDINATE / ROAD RESERVE CO-ORDINATES					
LINKERKANT/LEFT HAND SIDE			REGTERKANT/RIGHT HAND SIDE		
	Y	X	WG 21°		
L52	80 936.67	2 960 208.32		R52	80 844.65 2 960 264.98
L53	80 839.73	2 960 225.42		R53	80 745.50 2 960 277.45
L54	80 740.51	2 960 237.84		R54	80 644.82 2 960 284.96
L55	80 641.65	2 960 245.07		R55	80 543.78 2 960 287.41
L56	80 542.92	2 960 247.53		R56	80 442.31 2 960 284.81
L57	80 444.37	2 960 244.90		R57	80 341.22 2 960 277.19
L58	80 346.00	2 960 237.64		R58	80 241.00 2 960 264.46
L59	80 247.87	2 960 225.21		R59	80 141.41 2 960 246.83
L60	80 150.47	2 960 207.90		R60	80 026.97 2 960 220.02
L61	80 039.87	2 960 182.15		R61	79 653.08 2 960 121.18
L62	79 730.52	2 960 101.12		R62	79 592.33 2 960 108.50
L63	79 610.66	2 960 066.67		R63	79 558.14 2 960 096.47
L64	79 571.93	2 960 058.92		R64	79 516.77 2 960 088.60
L65	79 523.05	2 960 041.49		R65	79 490.86 2 960 083.69
L66	79 473.15	2 960 032.82		R66	79 463.13 2 960 071.47
L67	78 990.25	2 959 905.61		R67	78 589.90 2 959 841.56
L68	78 941.57	2 959 888.96		R68	78 523.65 2 959 830.55
L69	78 893.31	2 959 880.04		R69	78 476.88 2 959 810.74
L70	78 705.22	2 959 828.78		R70	78 291.28 2 959 766.46
L71	78 680.04	2 959 822.53		R71	78 223.35 2 959 739.31
L72	78 600.66	2 959 802.85		R72	78 119.25 2 959 709.47
L73	78 552.06	2 959 783.31		R73	78 042.84 2 959 692.67
L74	78 504.28	2 959 776.69		R74	77 977.46 2 959 668.63
L75	78 451.93	2 959 762.39		R75	77 348.49 2 959 487.28
L76	78 369.64	2 959 731.00		R76	77 195.47 2 959 448.32
L77	78 303.93	2 959 720.91		R77	77 125.03 2 959 434.03
L78	78 132.04	2 959 671.63		R78	77 004.60 2 959 429.53
L79	78 078.08	2 959 654.39		R79	76 875.19 2 959 415.31
L80	77 868.16	2 959 595.51		R80	76 768.99 2 959 419.68
L81	77 810.39	2 959 577.03		R81	76 711.12 2 959 425.42
L82	77 728.08	2 959 555.08		R82	76 500.53 2 959 455.51
L83	77 250.92	2 959 417.75		R83	76 359.12 2 959 459.75
L84	77 044.91	2 959 376.73		R84	76 249.24 2 959 459.69
L85	76 915.91	2 959 372.70		R85	76 118.10 2 959 453.76
L86	76 770.90	2 959 377.64		R86	75 799.37 2 959 390.89
L87	76 706.53	2 959 385.83		R87	75 479.64 2 959 344.76
L88	76 573.37	2 959 393.27		R88	75 381.44 2 959 316.23
L89	76 466.22	2 959 413.65		R89	75 240.81 2 959 294.15
L90	76 359.32	2 959 417.32		R90	75 001.40 2 959 251.04
L91	76 251.48	2 959 414.94		R91	74 904.94 2 959 241.90
L92	76 160.72	2 959 402.08		R92	74 789.42 2 959 214.64
L93	76 092.33	2 959 397.56		R93	74 710.64 2 959 201.13
L94	76 050.68	2 959 390.40		R94	74 607.78 2 959 193.76
L95	75 985.43	2 959 373.86		R95	74 526.57 2 959 169.50
L96	75 846.64	2 959 353.40		R96	74 431.02 2 959 155.65
L97	75 522.16	2 959 290.86		R97	74 173.64 2 959 092.53
L98	75 290.86	2 959 258.24		R98	74 060.79 2 959 056.93
L99	75 009.00	2 959 211.99		R99	73 934.87 2 959 011.67
L100	74 925.74	2 959 195.06		R100	73 887.16 2 958 985.53
L101	74 664.18	2 959 146.73		R101	73 733.83 2 958 926.10
L102	74 533.41	2 959 130.17		R102	73 607.44 2 958 871.19

Vel Sheet	18	Van of	22
--------------	----	-----------	----

P939/17

PADRESERWE KOÖRDINATE / ROAD RESERVE CO-ORDINATES							
LINKERKANT/LEFT HAND SIDE				REGTERKANT/RIGHT HAND SIDE			
	Y	X	WG 21°		Y	X	
L103	74 370.71	2 959 093.33		R103	73 533.98	2 958 835.88	
L104	74 292.98	2 959 078.61		R104	73 065.39	2 958 637.64	
L105	74 198.74	2 959 045.42		R105	73 019.05	2 958 629.70	
L106	74 093.89	2 959 011.72		R106	72 948.50	2 958 664.92	
L107	73 988.66	2 958 980.71		R107	72 867.83	2 958 724.19	
L108	73 920.54	2 958 955.85		R108	72 772.10	2 958 763.04	
L109	73 792.50	2 958 900.14		R109	72 686.56	2 958 785.57	
L110	73 645.96	2 958 835.92		R110	72 674.31	2 958 733.58	
L111	73 540.34	2 958 794.95		R111	72 759.95	2 958 708.74	
L112	73 175.77	2 958 640.25		R112	72 803.14	2 958 690.90	
L113	73 131.70	2 958 597.98		R113	72 841.56	2 958 675.04	
L114	73 120.01	2 958 557.25		R114	72 899.86	2 958 610.68	
L115	73 181.06	2 958 486.34		R115	72 885.79	2 958 561.26	
L116	73 226.15	2 958 420.43		R116	72 837.14	2 958 540.57	
L117	73 190.09	2 958 394.49		R117	72 523.62	2 958 407.28	
L118	73 146.96	2 958 454.27		R118	72 469.20	2 958 384.15	
L119	72 995.50	2 958 544.23		R119	72 412.93	2 958 362.90	
L120	72 943.20	2 958 542.02		R120	72 350.86	2 958 347.93	
L121	72 846.13	2 958 500.81		R121	72 305.89	2 958 337.08	
L122	72 613.36	2 958 401.97		R122	72 296.04	2 958 334.71	
L123	72 426.02	2 958 322.43		R123	72 268.37	2 958 332.72	
L124	72 364.80	2 958 304.88		R124	72 247.08	2 958 331.20	
L125	72 302.34	2 958 292.50		R125	72 176.00	2 958 326.11	
L126	72 239.05	2 958 285.35		R126	72 116.69	2 958 329.13	
L127	72 175.33	2 958 283.64		R127	72 056.25	2 958 337.28	
L128	72 111.74	2 958 286.82		R128	71 997.64	2 958 350.36	
L129	72 048.60	2 958 295.48		R129	71 382.31	2 958 512.91	
L130	71 353.08	2 958 479.33		R130	71 310.64	2 958 552.51	
L131	71 251.42	2 958 485.16		R131	71 303.74	2 958 575.09	
L132	71 215.56	2 958 474.38		R132	71 327.43	2 958 621.18	
L133	71 134.67	2 958 412.84		R133	71 341.17	2 958 647.92	
L134	71 079.41	2 958 350.02		R134	71 376.15	2 958 687.72	
L135	71 071.37	2 958 357.90		R135	71 373.25	2 958 690.35	
L136	71 057.57	2 958 342.70		R136	71 346.53	2 958 714.63	
L137	71 036.19	2 958 361.39		R137	71 287.21	2 958 647.38	
L138	71 050.91	2 958 378.18		R138	71 154.85	2 958 588.24	
L139	71 074.43	2 958 539.95		R139	71 074.71	2 958 593.98	
L140	71 050.51	2 958 559.05		R140	69 162.50	2 959 099.17	
L141	69 154.95	2 959 059.83		R141	68 771.27	2 959 202.52	
L142	68 674.14	2 959 186.85		R142	68 686.23	2 959 226.95	
L143	68 506.75	2 959 247.32		R143	68 522.22	2 959 286.10	
L144	68 344.66	2 959 322.49		R144	68 364.20	2 959 359.48	
L145	68 190.27	2 959 411.03		R145	68 213.13	2 959 446.29	
L146	68 049.90	2 959 509.25		R146	68 070.36	2 959 546.31	
L147	68 027.66	2 959 527.93		R147	68 054.23	2 959 559.57	
L148	67 939.74	2 959 601.76		R148	67 970.26	2 959 628.55	
L149	67 891.75	2 959 623.08		R149	67 948.01	2 959 666.33	
L150	67 877.31	2 959 613.14		R150	67 957.57	2 959 672.77	
L151	67 866.31	2 959 629.86		R151	67 946.16	2 959 689.13	
L152	67 875.79	2 959 636.38		R152	67 932.20	2 959 679.46	
L153	67 852.53	2 959 674.99		R153	67 885.36	2 959 699.79	

Vel
Sheet

19

Van
of

22

P939/17

PADRESERWE KOÖRDINATE / ROAD RESERVE CO-ORDINATES						
LINKERKANT/LEFT HAND SIDE				REGTERKANT/RIGHT HAND SIDE		
	Y	X	WG 21°		Y	X
L154	67 769.17	2 959	744.99	R154	67 794.95	2 959 775.70
L155	67 737.59	2 959	771.51	R155	67 650.27	2 959 897.18
L156	67 624.40	2 959	866.37	R156	57 273.37	2 968 610.03
L157	67 543.62	2 959	934.31	R157	57 223.36	2 968 652.03
L158	67 170.81	2 960	247.19	R158	57 139.66	2 968 715.37
L159	64 945.16	2 962	115.79	R159	57 052.73	2 968 774.09
L160	60 349.35	2 965	974.31	R160	56 334.57	2 969 207.10
L161	59 184.95	2 966	949.22	R161	56 271.38	2 969 246.79
L162	58 942.17	2 967	155.53	R162	56 166.67	2 969 320.98
L163	58 768.90	2 967	301.14	R163	56 105.16	2 969 381.94
L164	57 956.97	2 967	983.59	R164	56 051.58	2 969 413.24
L165	57 255.92	2 968	571.46	R165	54 030.40	2 971 093.19
L166	57 213.94	2 968	608.20	R166	53 913.92	2 971 176.76
L167	57 116.05	2 968	682.24	R167	53 791.59	2 971 252.03
L168	57 030.82	2 968	739.75	R168	53 664.23	2 971 318.35
L169	56 248.80	2 969	212.23	R169	53 532.65	2 971 375.49
L170	56 124.63	2 969	300.44	R170	48 882.33	2 973 011.37
L171	56 020.43	2 969	387.15	R171	48 675.26	2 973 085.54
L172	54 020.96	2 971	049.03	R172	48 574.71	2 973 126.26
L173	53 891.12	2 971	142.46	R173	48 460.93	2 973 172.32
L174	53 771.18	2 971	216.20	R174	48 358.17	2 973 217.94
L175	53 646.44	2 971	280.95	R175	47 620.05	2 973 557.86
L176	53 517.33	2 971	337.11	R176	47 143.09	2 973 787.86
L177	53 451.30	2 971	361.67	R177	46 637.45	2 974 042.23
L178	48 663.54	2 973	045.81	R178	46 172.24	2 974 287.21
L179	48 557.00	2 973	088.88	R179	45 913.40	2 974 427.98
L180	48 446.56	2 973	133.52	R180	44 128.00	2 975 410.04
L181	47 602.20	2 973	520.88	R181	44 029.61	2 975 457.34
L182	47 110.65	2 973	757.53	R182	43 895.01	2 975 510.87
L183	46 620.50	2 974	004.63	R183	41 880.25	2 976 165.06
L184	46 143.08	2 974	256.32	R184	41 639.29	2 976 257.42
L185	45 294.15	2 974	721.33	R185	41 295.38	2 976 307.69
L186	44 208.58	2 975	320.45	R186	41 201.16	2 976 332.69
L187	44 011.55	2 975	424.98	R187	41 064.10	2 976 379.54
L188	43 882.22	2 975	471.93	R188	40 997.04	2 976 406.74
L189	41 836.77	2 976	137.67	R189	39 922.86	2 976 864.38
L190	41 677.50	2 976	172.24	R190	39 881.34	2 976 882.10
L191	41 567.19	2 976	178.40	R191	39 092.74	2 977 218.20
L192	41 423.68	2 976	229.99	R192	39 024.43	2 977 248.89
L193	41 189.24	2 976	292.97	R193	38 891.60	2 977 317.78
L194	41 049.28	2 976	340.83	R194	38 702.84	2 977 439.62
L195	39 905.05	2 976	828.65	R195	37 189.20	2 978 543.14
L196	39 863.23	2 976	846.43	R196	37 145.90	2 978 568.46
L197	39 063.46	2 977	187.20	R197	34 952.45	2 980 167.97
L198	39 006.72	2 977	211.42	R198	34 872.52	2 980 227.44
L199	38 869.78	2 977	279.59	R199	34 716.01	2 980 351.39
L200	38 755.40	2 977	351.70	R200	34 564.69	2 980 481.42
L201	38 700.88	2 977	391.44	R201	34 491.11	2 980 548.72
L202	37 275.65	2 978	430.65	R202	34 074.06	2 980 937.42
L203	37 237.26	2 978	464.91	R203	34 081.71	2 980 946.61
L204	37 168.69	2 978	514.85	R204	34 081.19	2 980 947.25

Vel Sheet	20	Van of	22
--------------	----	-----------	----

P939/17

PADRESERWE KOÖRDINATE / ROAD RESERVE CO-ORDINATES						
LINKERKANT/LEFT HAND SIDE				REGTERKANT/RIGHT HAND SIDE		
	Y	X	WG 21°		Y	X
L205	37 123.37	2 978	547.69	R205	34 044.93	2 980 991.80
L206	34 853.70	2 980	202.73	R206	34 046.71	2 981 010.68
L207	34 696.30	2 980	327.44	R207	34 104.89	2 981 065.69
L208	34 544.21	2 980	458.28	R208	34 128.59	2 981 118.23
L209	34 471.71	2 980	525.78	R209	33 998.89	2 981 059.31
L210	34 054.10	2 980	914.91	R210	33 965.59	2 981 062.66
L211	34 050.85	2 980	911.09	R211	33 907.33	2 981 099.62
L212	34 050.12	2 980	911.54	R212	32 575.08	2 982 340.76
L213	34 038.04	2 980	919.09	R213	32 494.57	2 982 421.84
L214	33 983.97	2 980	952.92	R214	32 447.78	2 982 459.42
L215	33 959.51	2 980	955.12	R215	32 331.01	2 982 551.52
L216	33 882.84	2 980	924.02	R216	32 207.02	2 982 634.01
L217	33 875.85	2 980	929.82	R217	32 076.84	2 982 705.92
L218	33 850.43	2 980	950.21	R218	31 941.24	2 982 767.12
L219	33 906.74	2 981	004.55	R219	31 801.06	2 982 816.91
L220	33 908.51	2 981	023.67	R220	31 657.30	2 982 855.04
L221	33 872.32	2 981	077.33	R221	31 510.90	2 982 881.41
L222	32 475.03	2 982	379.30	R222	31 363.32	2 982 895.74
L223	32 420.85	2 982	427.76	R223	31 214.06	2 982 897.87
L224	32 306.66	2 982	517.91	R224	31 144.08	2 982 893.34
L225	32 185.41	2 982	598.47	R225	30 141.48	2 982 826.27
L226	32 058.36	2 982	668.95	R226	30 081.37	2 982 825.17
L227	31 925.71	2 982	728.52	R227	30 021.48	2 982 818.22
L228	31 788.84	2 982	777.24	R228	29 904.51	2 982 810.45
L229	31 648.42	2 982	814.55	R229	29 846.67	2 982 807.72
L230	31 505.25	2 982	840.29	R230	29 731.71	2 982 815.22
L231	31 360.53	2 982	855.29	R231	29 616.31	2 982 819.15
L232	31 215.25	2 982	856.60	R232	29 502.32	2 982 838.33
L233	31 182.42	2 982	854.98	R233	29 390.44	2 982 866.44
L234	31 142.49	2 982	853.22	R234	29 280.87	2 982 903.12
L235	30 284.28	2 982	795.73	R235	29 228.61	2 982 924.09
L236	29 907.28	2 982	770.52	R236	27 658.89	2 983 590.25
L237	29 847.84	2 982	766.23	R237	27 616.56	2 983 608.54
L238	29 729.02	2 982	767.48	R238	27 522.40	2 983 653.18
L239	29 610.84	2 982	777.85	R239	27 434.40	2 983 704.71
L240	29 493.85	2 982	797.70	R240	27 395.91	2 983 729.46
L241	29 383.22	2 982	819.79	R241	27 200.96	2 983 856.29
L242	29 306.95	2 982	852.16	R242	27 150.03	2 983 889.64
L243	29 065.75	2 982	954.52	R243	27 017.26	2 983 958.30
L244	27 399.70	2 983	661.58	R244	26 905.10	2 984 005.46
L245	27 369.65	2 983	698.98	R245	26 825.88	2 984 030.77
L246	27 186.94	2 983	817.81	R246	25 737.34	2 984 378.49
L247	27 129.05	2 983	853.62	R247	24 706.19	2 984 707.77
L248	27 012.13	2 983	915.49	R248	24 650.75	2 984 726.70
L249	26 937.44	2 983	946.95	R249	24 542.87	2 984 770.86
L250	26 890.86	2 983	966.68	R250	24 438.54	2 984 823.29
L251	26 828.86	2 983	988.03	R251	24 338.84	2 984 883.82
L252	24 693.99	2 984	669.73	R252	24 244.28	2 984 952.03
L253	24 636.60	2 984	687.73	R253	24 155.40	2 985 027.38
L254	24 525.66	2 984	733.06	R254	24 113.31	2 985 067.65
L255	24 418.52	2 984	786.96	R255	23 882.38	2 985 296.99

Vel
Sheet

21

Van
of

22

P939/17

PADRESERWE KOÖRDINATE / ROAD RESERVE CO-ORDINATES					
LINKERKANT/LEFT HAND SIDE			REGTERKANT/RIGHT HAND SIDE		
	Y	X	WG 21°		
L256	24 316.03	2 984 849.24		R256	23 600.65 2 985 577.10
L257	24 218.75	2 984 919.29		R257	23 557.40 2 985 620.18
L258	24 127.27	2 984 996.89		R258	23 451.27 2 985 711.39
L259	24 085.07	2 985 039.26		R259	23 338.85 2 985 794.75
L260	23 849.19	2 985 274.13		R260	23 220.79 2 985 869.66
L261	23 578.69	2 985 542.25		R261	23 164.75 2 985 899.40
L262	23 529.10	2 985 589.66		R262	22 455.17 2 986 284.27
L263	23 425.36	2 985 678.89			
L264	23 315.28	2 985 760.41			
L265	23 199.66	2 985 833.87			
L266	23 145.62	2 985 864.24			
L267	22 541.18	2 986 192.15			
L268	22 507.61	2 986 193.10			
L269	22 487.34	2 986 187.07			
L270	22 450.29	2 986 150.30			
L271	22 414.94	2 986 169.52			
L272	22 425.67	2 986 220.46			

Vel Sheet	22	Van of	22
--------------	----	-----------	----

P939/17