

## DEPARTMENT OF TRANSPORT

NO. 419

15 MARCH 2019

**THE SOUTH AFRICAN NATIONAL ROADS  
AGENCY SOC LIMITED**

Registration No: 1998/009584/30

**DECLARATION AMENDMENT OF NATIONAL ROAD N12 SECTION 12**

AMENDMENT OF DECLARATION No.'s 759 OF 2007 AND 582 OF 2015.

By virtue of Section 40 (1)(b) of The South African National Roads Agency Limited and National Roads Act, 1998 (Act No. 7 of 1998), I hereby amend (I) Declaration No. 759 of 2007 the section of the route from points L38 and R42 on sheet 5 of Plan No. P568/06 up to its end, (II) Declaration No. 582 of 2015 in its entirety, by substituting all sheets of their respective plans with the accompanying sheets 1 to 14 of Plan No. P1066/18.

**(National Road N12 Section 12: Christiana – Bloemhof)****MINISTER OF TRANSPORT**

## DEPARTEMENT VAN VERVOER

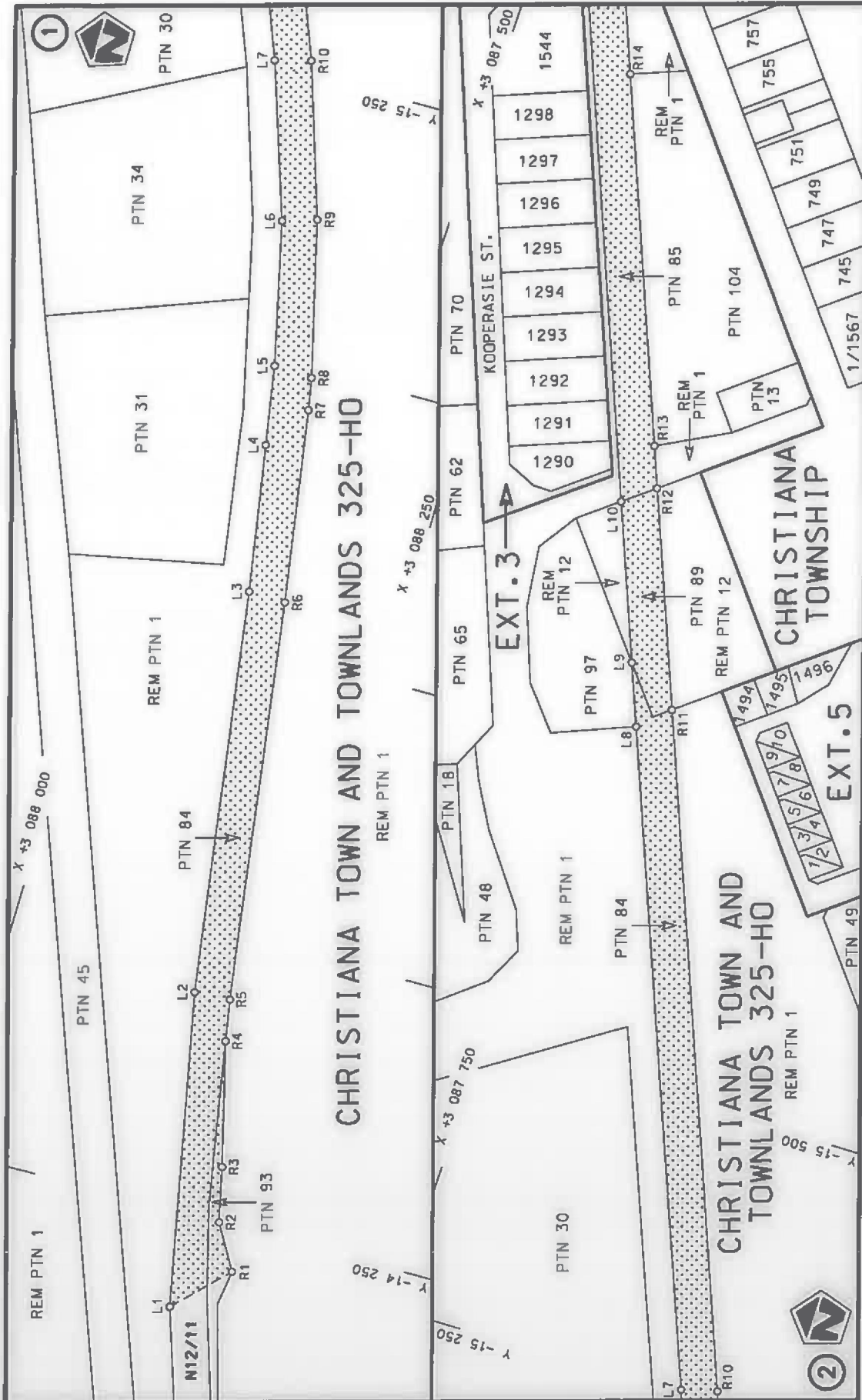
NO. 419

15 MAART 2019

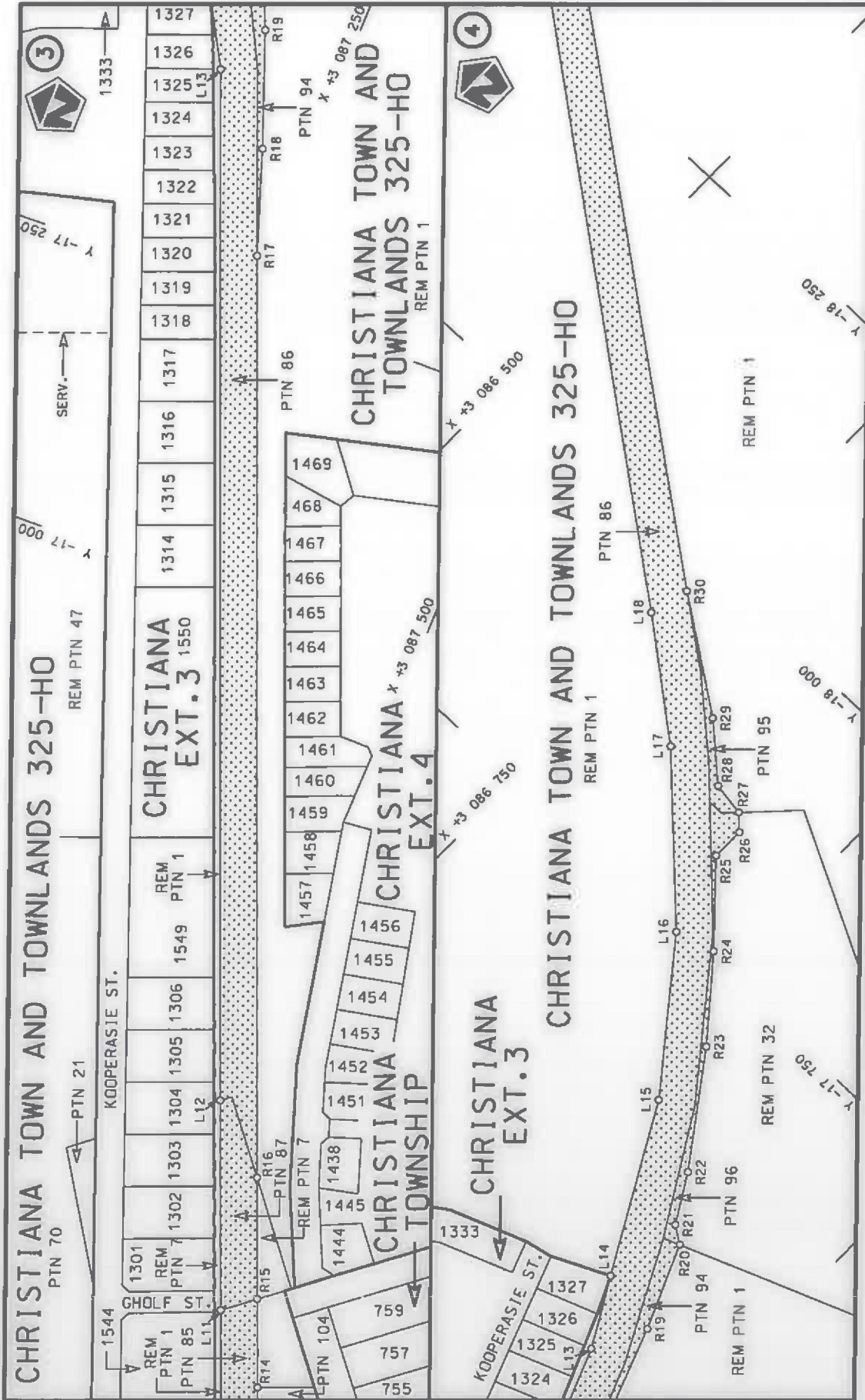
**DIE SUID-AFRIKAANSE NASIONALE  
PADAGENTSKAP MSB BEPERK****Registrasie No: 1998/009584/30****VERKLARING WYSIGING VAN NASIONALE PAD N12 SEKSIE 12****WYSIGING VAN VERKLARING No.'s 759 VAN 2007 EN 582 OF 2015.**

Kragtens Artikel 40(1)(b) van die Wet op die Suid-Afrikaanse Nasionale Padagentskap Beperk en op Nasionale Paaie, 1998 (Wet No. 7 van 1998), wysig ek hiermee (I) Verklaring No. 759 van 2007, die gedeelte van die roete vanaf punte L38 en R42 op vel 5 van Plan No. P568/06 tot by die einde, (II) Verklaring No. 582 van 2015 in sy geheel, deur alle velle van hulle respektiewelike planne te vervang met meegaande velle 1 tot 14 van Plan No. P1066/18.

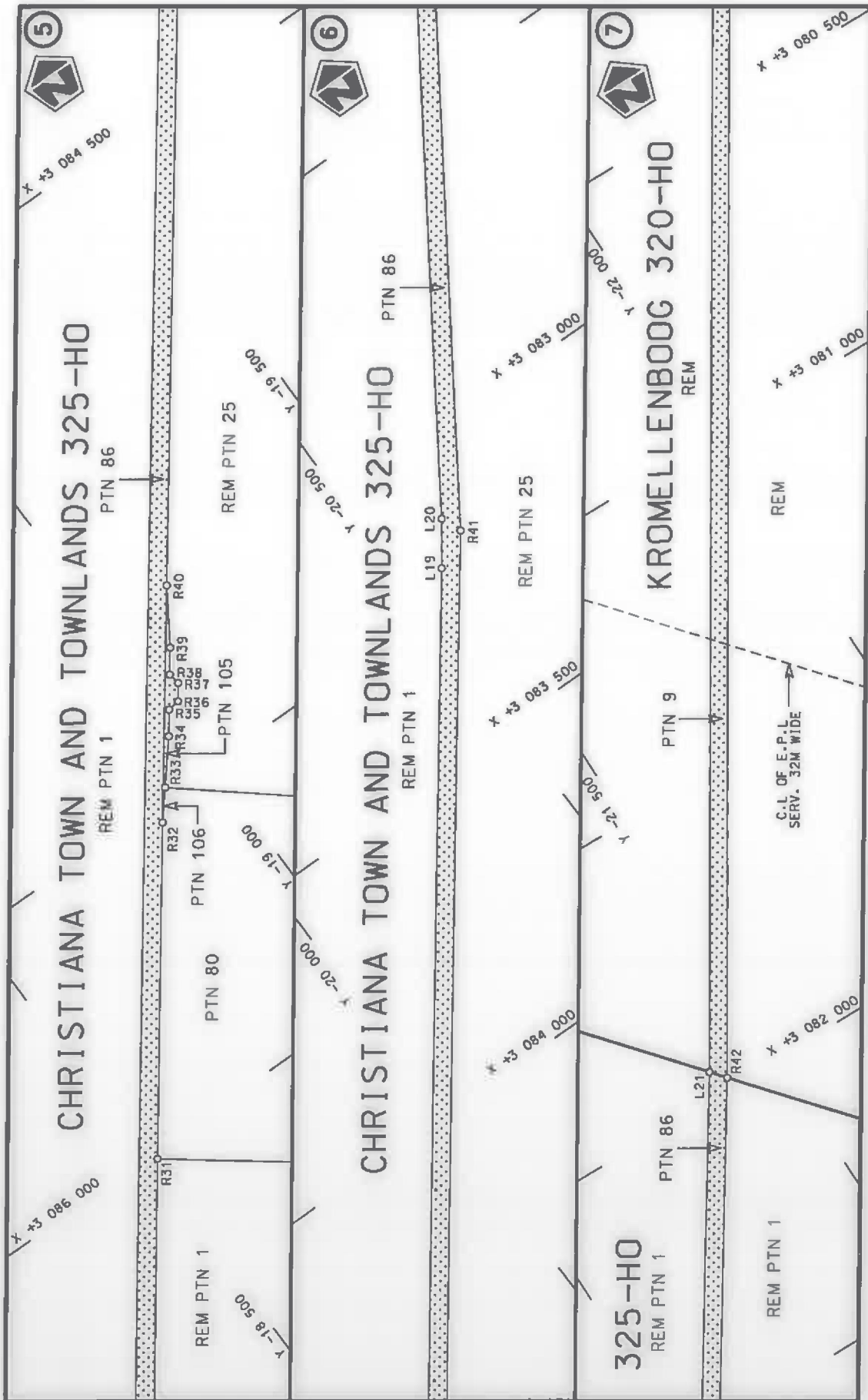
**(Nasionale Pad N12 Seksie 12: Christiana – Bloemhof)****MINISTER VAN VERVOER**



<p>Die Suid Afrikaanse Nasionale Padagentskap MSB Bpk The South African National Roads Agency SOC Ltd</p>	<p>Die figuur getoon The figure shown</p>	<p>steldie padreserwe voor van 'n gedeelte represents the road reserve of a portion von Nasionale Roete N12 of National Route</p>	<p>Vel Sheet 1 of 14</p>
<p>Plan P1066/18</p>		<p>Seksie Section 12</p>	<p>Plan P1066/18</p>

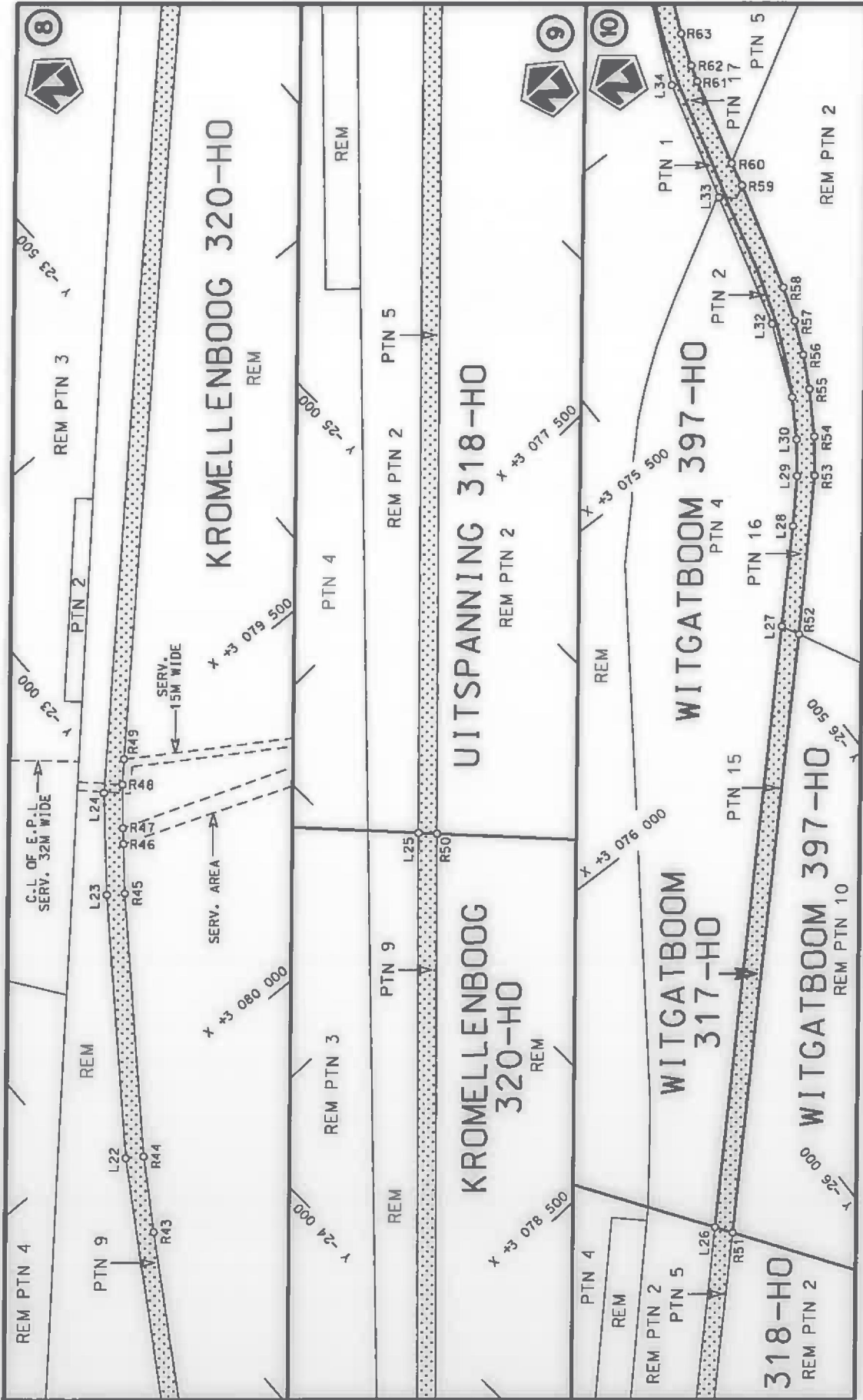


Vel van van Sheet 2 of 14 Plan P1066/18	steldie padreserwe voor van 'n gedeelte represents the road reserve of a portion van Nasionale Roete N12 Seksie of National Route Section	Die figuur getoon The figure shown
12		

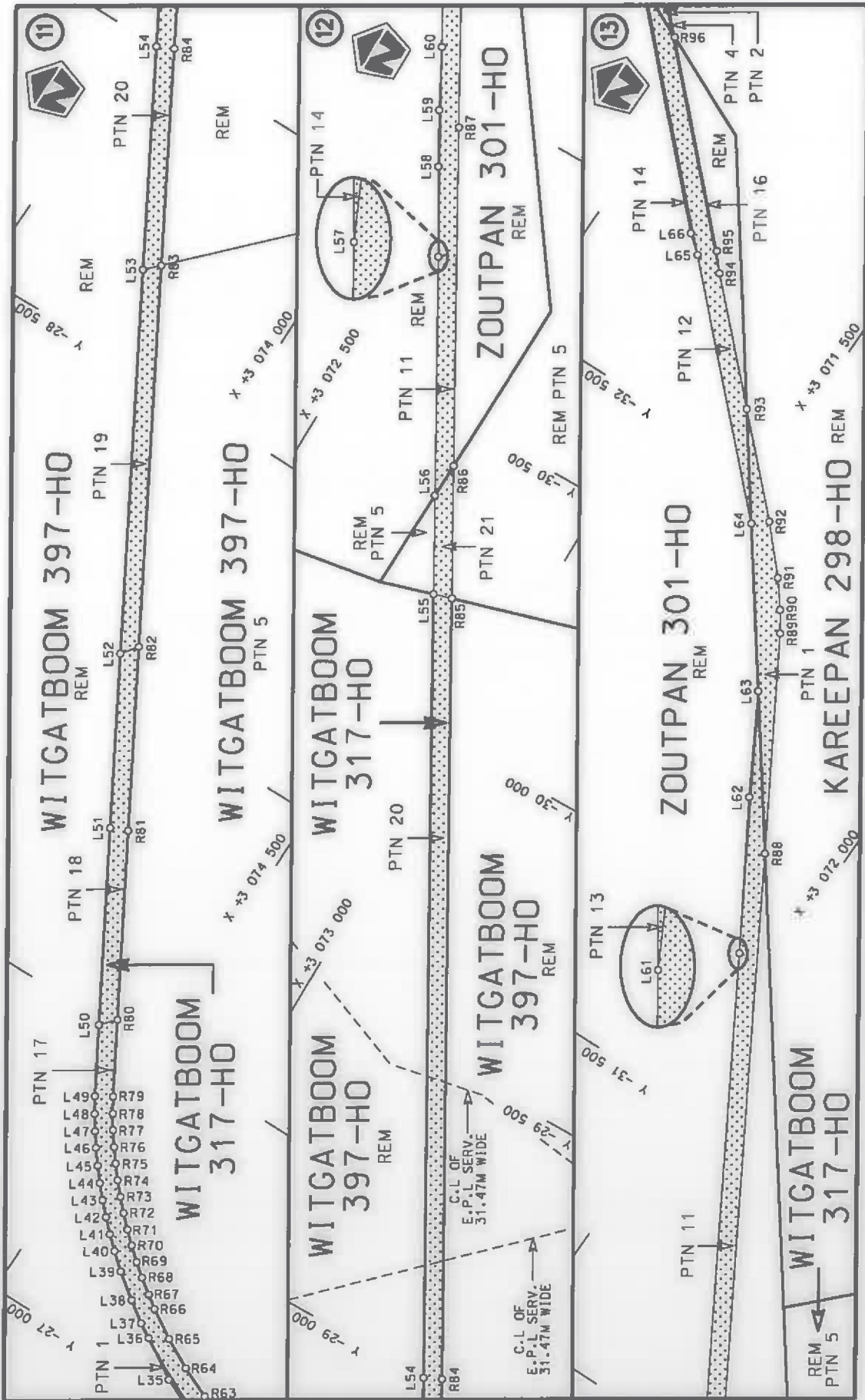


<p>Die Suid Afrikaanse Nasionale Padagentskap MSB Bpk The South African National Roads Agency SOC Ltd</p>	<p>Die figuur getoon The figure shown</p>	<p>steldie padreserwe voor van 'n gedeelte represents the road reserve of a portion van Nasionale Raete N12 of National Route</p>
<p>Vel Sheet 3 of 14 Plan P1066/18</p>	<p>Seksie Section N12</p>	<p>12</p>

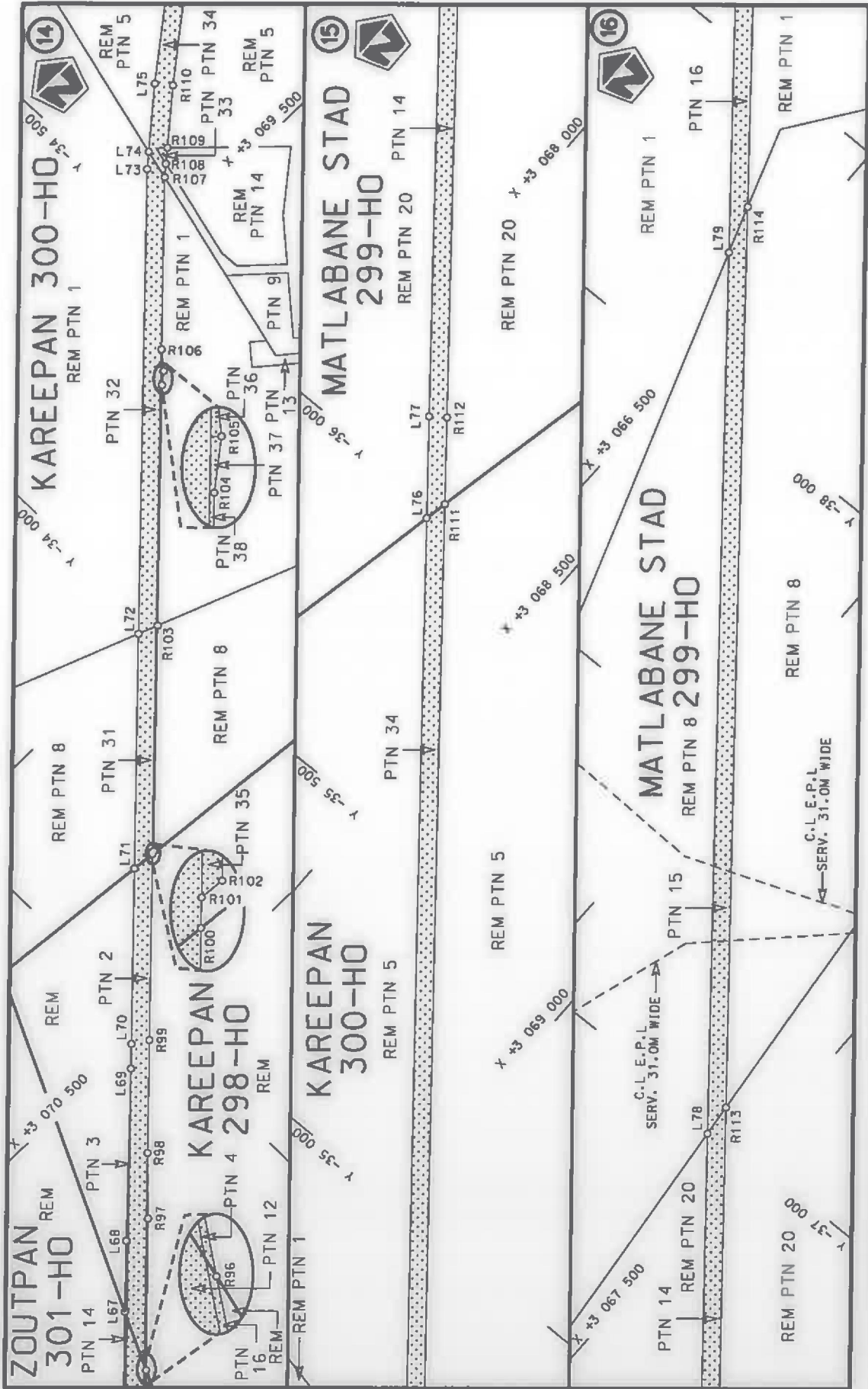




<p>Die Suid Afrikaanse Nasionale Padagentskap MSB Bpk The South African National Roads Agency SOC Ltd</p>	<p>Die figuur getoon The figure shown</p>	<p>steldie padreserwe voor van 'n gedeelte represents the road reserve of a portion van Nasionale Roete N12 of National Route Section</p>	<p>Val Sheet 4 of 14 Plan P1066/18</p>
---	---	---	--

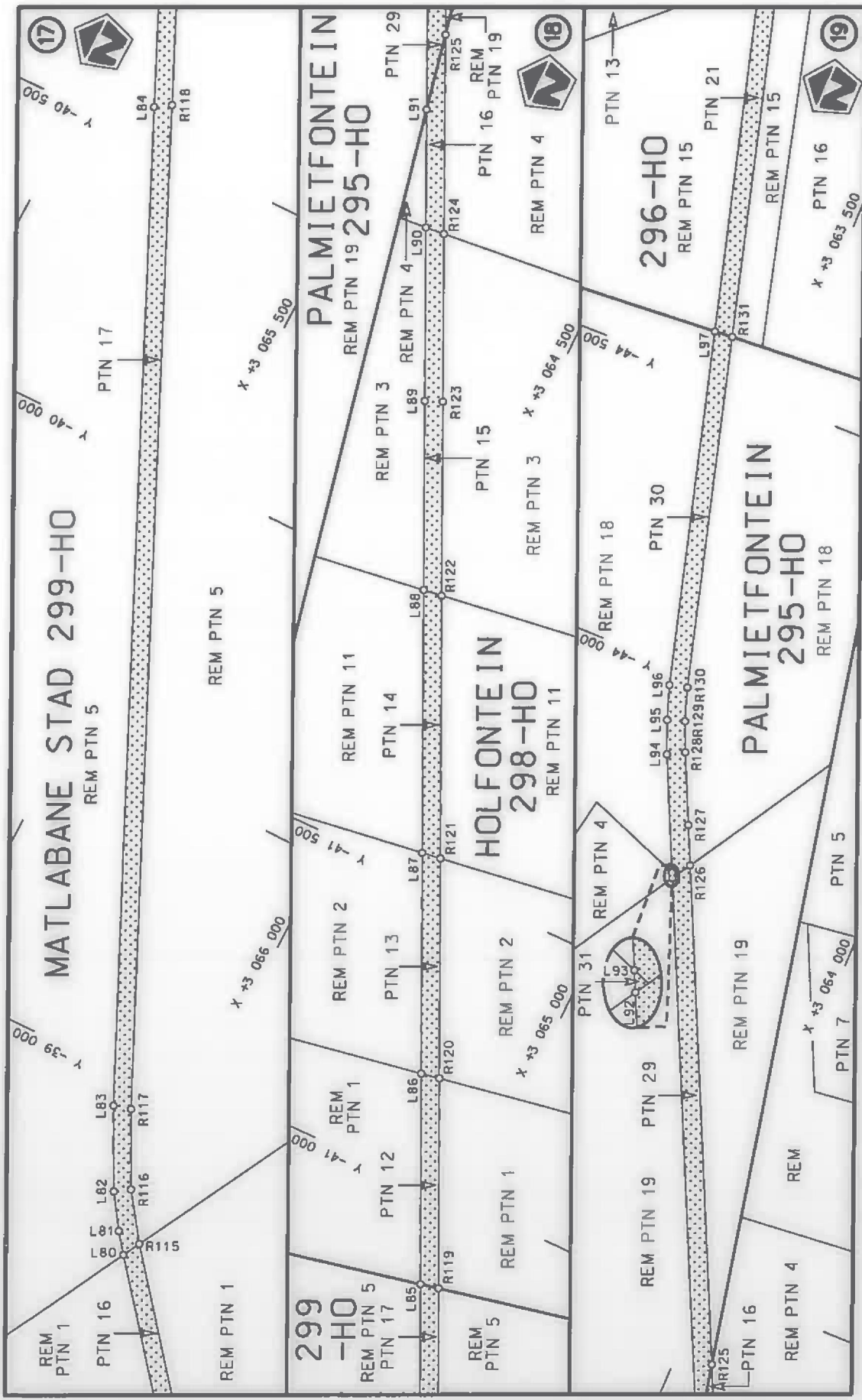


<p>Die Suid Afrikaanse Nasionale Padagentskap MSB Bpk The South African National Roads Agency SOC Ltd</p>	<p>Die figuur getoon The figure shown</p>	<p>stel die padreserwe voor van 'n gedeelte represents the road reserve of a portion van Nasionale Roete N12 of National Route</p>	<p>Vel Sheet 5 of 14 Plan P1066/18</p>
<p>12</p>		<p>Seksie Section</p>	

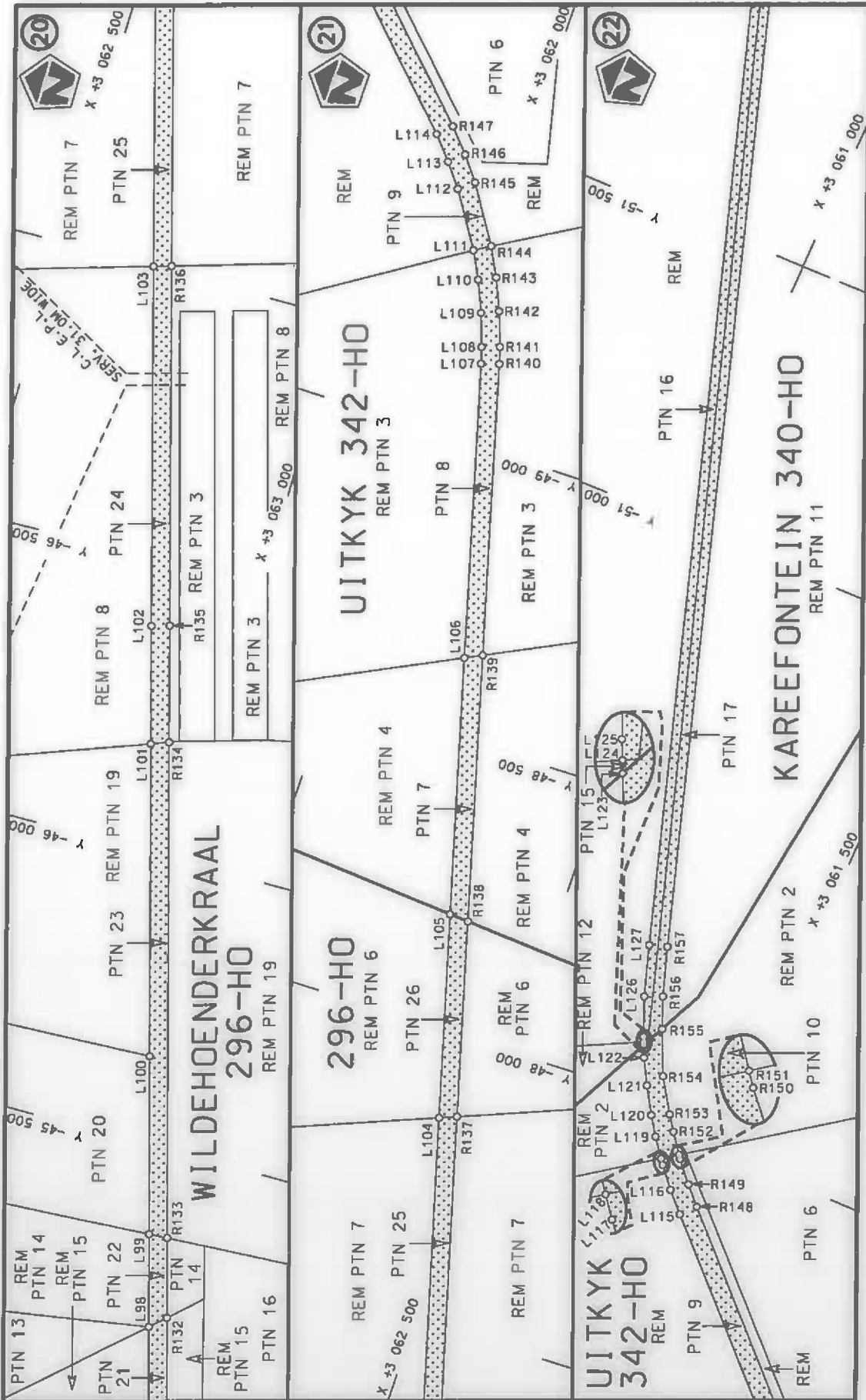


<p>Die Suid Afrikaanse Nasionale Padagentskap MSB Bpk The South African National Roads Agency SOC Ltd</p>	<p>Die figuur getoon The figure shown</p>	<p>steldie padreserwe voor van 'n gedeelte represents the road reserve of a portion van Nasionale Roete N12 of National Route Section</p>	<p>Vel Sheet 6 of 14 Plan P1066/18</p>
---	---	---	--

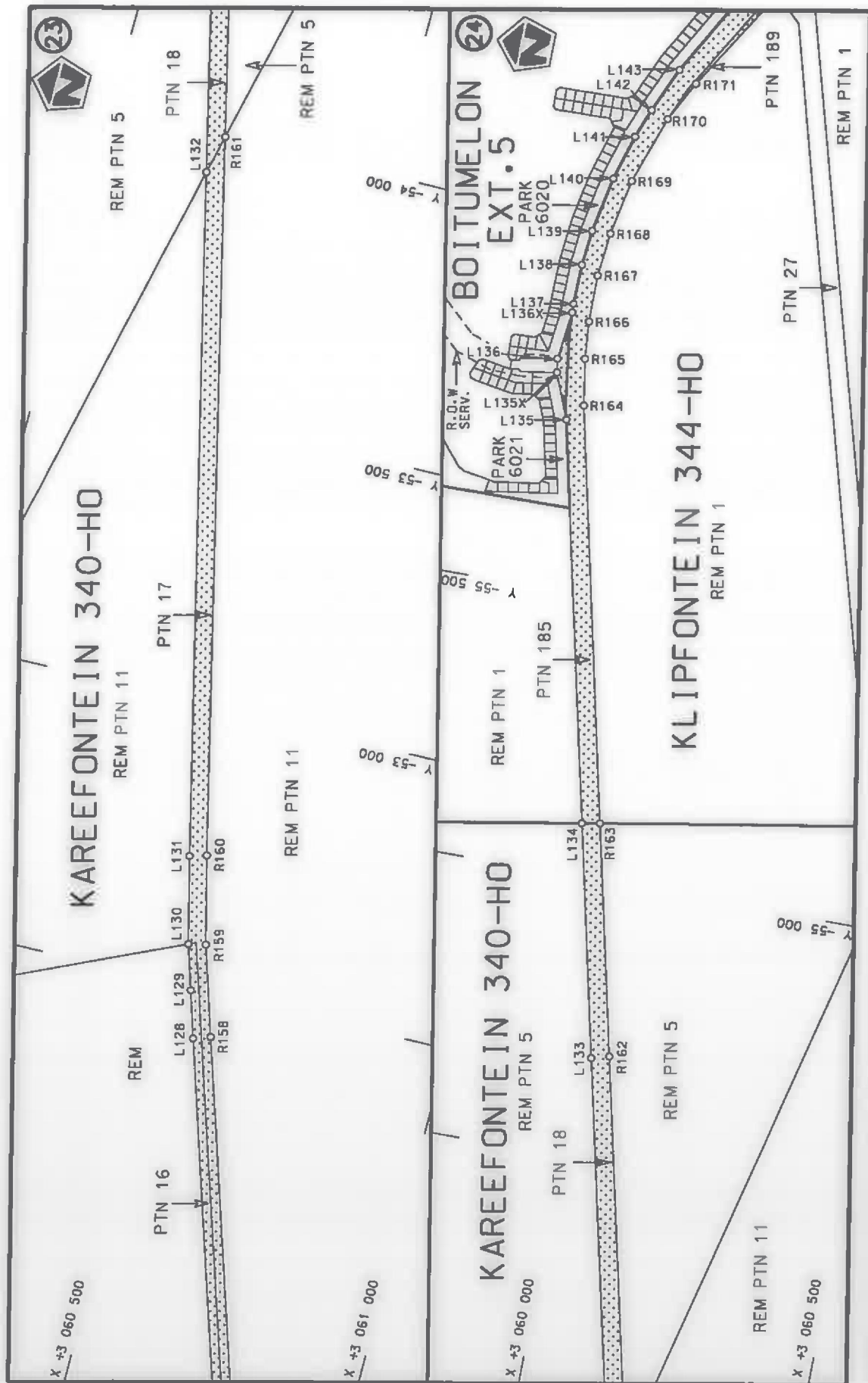




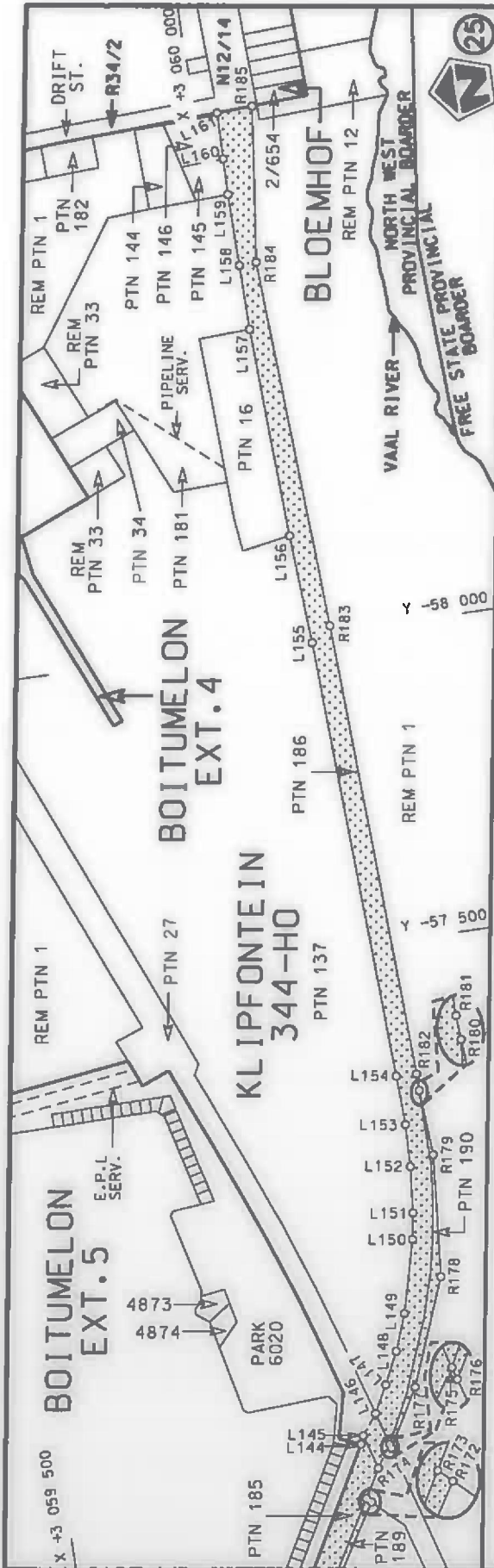
Die Suid Afrikaanse Nasionale Padagentskap MSB Bpk The South African National Roads Agency SOC Ltd	Die figuur getoon The figure shown	steldie podreserwe voor van 'n gedeelte represents the road reserve of a portion van Nasionale Roete N12 of National Route Section	Vel Sheet 7 of 14 Plan P1066/18
---	---------------------------------------	---	------------------------------------



Die Suid Afrikaanse Nasionale Padagentskap MSB Bpk The South African National Roads Agency SOC Ltd	Die figuur getoon The figure shown	steldie podreserwe voor van 'n gedeelte represents the road reserve of a portion van Nasionale Roete N12 of National Route	Vel van Sheet 8 of 14
		12 Seksie Section	Plan P1066/18



<p>Die Suid Afrikaanse Nasionale Padagentskap MSB Bpk The South African National Roads Agency SOC Ltd</p>	<p>Die figuur getoon The figure shown</p>	<p>steldie padreserwe voor van 'n gedeelte represents the road reserve of a portion van Nasionale Roete N12 of National Route</p>	<p>Vel Sheet 9 of 14 Plan P1066/18</p>
---	---	---	--



Vel Sheet 10 of 14  
Plan P1066/18

stel die padreserwe voor van 'n gedeelte  
represents the road reserve of a portion  
van Nasionale Roete N12  
of National Route N12  
Seksie Section 12



Die figuur getoon  
The figure shown

Die Suid Afrikaanse Nasionale Padagentskap MSB Bpk  
The South African National Roads Agency SOC Ltd



PADRESERWE KOÖRDINATE / ROAD RESERVE CO-ORDINATES						
LINKERKANT/LEFT HAND SIDE				REGTERKANT/RIGHT HAND SIDE		
	Y	X	WG 25°		Y	X
L1	-14 167.29	3 088 224.87		R1	-14 211.28	3 088 268.11
L2	-14 441.66	3 088 168.89		R2	-14 250.71	3 088 245.53
L3	-14 796.02	3 088 116.31		R3	-14 298.80	3 088 234.46
L4	-14 924.66	3 088 093.99		R4	-14 406.99	3 088 206.65
L5	-14 994.31	3 088 081.91		R5	-14 443.57	3 088 199.99
L6	-15 119.33	3 088 052.55		R6	-14 794.94	3 088 148.47
L7	-15 254.30	3 088 006.83		R7	-14 964.08	3 088 120.76
L8	-15 804.44	3 087 790.34		R8	-14 992.21	3 088 115.34
L9	-15 857.46	3 087 769.46		R9	-15 128.30	3 088 081.42
L10	-15 990.85	3 087 716.97		R10	-15 262.22	3 088 037.24
L11	-16 406.56	3 087 553.38		R11	-15 827.60	3 087 814.96
L12	-16 580.18	3 087 485.05		R12	-16 011.13	3 087 742.80
L13	-17 431.81	3 087 149.91		R13	-16 046.25	3 087 728.99
L14	-17 490.05	3 087 117.08		R14	-16 353.78	3 087 608.09
L15	-17 631.40	3 087 038.70		R15	-16 426.92	3 087 579.33
L16	-17 749.27	3 086 945.78		R16	-16 527.56	3 087 539.77
L17	-17 864.42	3 086 827.61		R17	-17 289.49	3 087 240.21
L18	-17 938.39	3 086 732.72		R18	-17 379.43	3 087 209.63
L19	-20 567.39	3 083 207.19		R19	-17 477.96	3 087 173.14
L20	-20 618.69	3 083 135.83		R20	-17 551.04	3 087 141.37
L21	-21 387.08	3 081 957.30		R21	-17 561.32	3 087 126.27
L22	-22 571.46	3 080 056.82		R22	-17 602.36	3 087 101.43
L23	-22 847.75	3 079 676.85		R23	-17 693.41	3 087 035.36
L24	-22 960.52	3 079 534.96		R24	-17 758.88	3 086 981.01
L25	-24 596.29	3 077 840.30		R25	-17 821.35	3 086 923.33
L26	-25 776.95	3 076 620.77		R26	-17 849.95	3 086 923.45
L27	-26 523.94	3 075 849.16		R27	-17 862.32	3 086 910.89
L28	-26 648.35	3 075 720.48		R28	-17 867.06	3 086 881.65
L29	-26 708.05	3 075 654.76		R29	-17 907.23	3 086 836.26
L30	-26 747.22	3 075 602.95		R30	-17 972.99	3 086 741.73
L31	-26 787.28	3 075 539.24		R31	-18 515.07	3 086 011.81
L32	-26 839.91	3 075 414.61		R32	-18 872.88	3 085 531.98
L33	-26 905.24	3 075 180.10		R33	-18 912.62	3 085 483.95
L34	-26 963.04	3 074 972.01		R34	-18 970.77	3 085 413.79
L35	-27 022.85	3 074 841.11		R35	-18 999.15	3 085 375.72
L36	-27 066.82	3 074 771.26		R36	-19 020.17	3 085 372.62
L37	-27 081.94	3 074 746.13		R37	-19 039.54	3 085 346.65
L38	-27 107.80	3 074 709.34		R38	-19 036.45	3 085 325.69
L39	-27 140.62	3 074 665.94		R39	-19 064.92	3 085 287.51
L40	-27 165.35	3 074 636.81		R40	-19 124.93	3 085 193.95
L41	-27 186.35	3 074 613.84		R41	-20 632.71	3 083 171.91
L42	-27 208.16	3 074 591.71		R42	-21 408.13	3 081 982.35
L43	-27 230.50	3 074 570.21		R43	-22 523.45	3 080 188.82
L44	-27 253.54	3 074 549.73		R44	-22 596.84	3 080 074.68
L45	-27 277.23	3 074 529.96		R45	-22 873.19	3 079 695.25
L46	-27 302.65	3 074 509.80		R46	-22 927.80	3 079 626.27
L47	-27 326.58	3 074 492.51		R47	-22 945.24	3 079 604.29
L48	-27 352.16	3 074 475.08		R48	-22 994.36	3 079 544.49
L49	-27 378.79	3 074 458.36		R49	-23 025.32	3 079 511.62
L50	-27 488.94	3 074 395.14		R50	-24 617.97	3 077 863.54
L51	-27 793.23	3 074 220.49		R51	-25 794.83	3 076 646.95

Vel 11 Van 14  
Sheet of

P1066/18



PADRESERWE KOÖRDINATE / ROAD RESERVE CO-ORDINATES						
LINKERKANT/LEFT HAND SIDE			REGTERKANT/RIGHT HAND SIDE			
	Y	X	WG 25°		Y	X
L52	-28 062.64	3 074	066.04	R52	-26 538.42	3 075 878.72
L53	-28 655.06	3 073	726.41	R53	-26 732.62	3 075 673.12
L54	-28 999.39	3 073	529.01	R54	-26 774.43	3 075 618.03
L55	-30 210.39	3 072	834.70	R55	-26 819.80	3 075 546.16
L56	-30 362.55	3 072	747.46	R56	-26 848.45	3 075 491.36
L57	-30 730.56	3 072	536.47	R57	-26 873.52	3 075 434.64
L58	-30 868.20	3 072	454.67	R58	-26 894.93	3 075 376.00
L59	-30 955.39	3 072	404.66	R59	-26 949.59	3 075 188.27
L60	-31 053.70	3 072	351.22	R60	-26 959.25	3 075 146.15
L61	-31 773.29	3 071	938.72	R61	-27 001.35	3 074 994.03
L62	-32 013.21	3 071	797.89	R62	-27 010.44	3 074 965.40
L63	-32 178.31	3 071	705.54	R63	-27 031.60	3 074 909.74
L64	-32 419.14	3 071	529.56	R64	-27 055.96	3 074 855.00
L65	-32 764.53	3 071	185.47	R65	-27 084.32	3 074 801.92
L66	-32 789.96	3 071	154.24	R66	-27 115.72	3 074 751.85
L67	-33 110.64	3 070	835.05	R67	-27 134.48	3 074 725.87
L68	-33 201.57	3 070	745.57	R68	-27 150.89	3 074 703.13
L69	-33 422.94	3 070	529.90	R69	-27 169.40	3 074 680.08
L70	-33 454.30	3 070	498.71	R70	-27 189.51	3 074 656.59
L71	-33 677.33	3 070	276.94	R71	-27 209.48	3 074 635.05
L72	-33 975.56	3 069	980.40	R72	-27 230.53	3 074 613.42
L73	-34 565.25	3 069	394.05	R73	-27 251.74	3 074 593.12
L74	-34 588.92	3 069	373.52	R74	-27 274.27	3 074 572.74
L75	-34 681.23	3 069	293.48	R75	-27 297.19	3 074 553.72
L76	-35 970.05	3 068	245.11	R76	-27 320.30	3 074 535.48
L77	-36 111.15	3 068	130.33	R77	-27 344.88	3 074 517.80
L78	-36 982.82	3 067	421.43	R78	-27 369.25	3 074 501.32
L79	-38 207.77	3 066	425.21	R79	-27 394.95	3 074 485.10
L80	-38 714.36	3 066	013.23	R80	-27 513.82	3 074 416.89
L81	-38 748.66	3 065	986.47	R81	-27 805.72	3 074 249.40
L82	-38 807.66	3 065	946.00	R82	-28 089.97	3 074 086.46
L83	-38 943.83	3 065	874.71	R83	-28 678.54	3 073 749.09
L84	-40 558.13	3 065	115.64	R84	-29 012.85	3 073 557.46
L85	-40 838.95	3 064	983.64	R85	-30 219.46	3 072 865.70
L86	-41 180.26	3 064	823.20	R86	-30 423.99	3 072 748.44
L87	-41 537.43	3 064	655.31	R87	-30 945.80	3 072 449.28
L88	-41 962.50	3 064	455.50	R88	-31 944.61	3 071 876.30
L89	-42 267.99	3 064	311.90	R89	-32 284.50	3 071 679.74
L90	-42 548.29	3 064	180.09	R90	-32 318.91	3 071 656.60
L91	-42 738.60	3 064	090.60	R91	-32 364.18	3 071 621.65
L92	-43 649.38	3 063	662.32	R92	-32 438.92	3 071 553.48
L93	-43 658.38	3 063	658.08	R93	-32 583.77	3 071 409.26
L94	-43 849.97	3 063	567.99	R94	-32 758.20	3 071 235.50
L95	-43 906.75	3 063	544.14	R95	-32 788.69	3 071 209.62
L96	-43 965.63	3 063	523.85	R96	-33 063.28	3 070 936.26
L97	-44 576.99	3 063	350.34	R97	-33 256.18	3 070 743.79
L98	-45 188.25	3 063	176.87	R98	-33 337.52	3 070 658.74
L99	-45 347.10	3 063	131.79	R99	-33 481.18	3 070 515.78
L100	-45 651.72	3 063	045.45	R100	-33 717.63	3 070 280.48
L101	-46 185.83	3 062	893.87	R101	-33 720.06	3 070 278.06
L102	-46 386.99	3 062	836.78	R102	-33 722.95	3 070 278.29

Vel  
Sheet

12

Van  
of

14

P1066/18

PADRESERWE KOÖRDINATE / ROAD RESERVE CO-ORDINATES							
LINKERKANT/LEFT HAND SIDE			REGTERKANT/RIGHT HAND SIDE				
	Y	X	WG 25°	Y	X		
L103	-47 000.76	3 062	662.59	R103	-34 009.40	3 069	993.20
L104	-47 850.70	3 062	421.39	R104	-34 314.67	3 069	689.34
L105	-48 199.39	3 062	322.47	R105	-34 334.52	3 069	673.43
L106	-48 637.90	3 062	198.02	R106	-34 358.24	3 069	643.21
L107	-49 141.03	3 062	055.24	R107	-34 576.74	3 069	425.90
L108	-49 169.06	3 062	046.50	R108	-34 595.00	3 069	410.01
L109	-49 226.07	3 062	026.06	R109	-34 616.53	3 069	391.27
L110	-49 280.14	3 062	001.74	R110	-34 701.18	3 069	317.58
L111	-49 326.78	3 061	977.25	R111	-36 009.48	3 068	253.39
L112	-49 421.41	3 061	916.27	R112	-36 129.96	3 068	155.39
L113	-49 461.56	3 061	884.61	R113	-37 039.04	3 067	415.98
L114	-49 501.59	3 061	849.96	R114	-38 291.24	3 066	397.49
L115	-49 873.58	3 061	479.98	R115	-38 744.24	3 066	029.04
L116	-49 907.30	3 061	447.67	R116	-38 824.33	3 065	971.16
L117	-49 942.78	3 061	417.77	R117	-38 952.05	3 065	905.09
L118	-49 951.98	3 061	410.65	R118	-40 575.33	3 065	141.98
L119	-49 983.83	3 061	386.02	R119	-40 845.30	3 065	015.12
L120	-50 016.24	3 061	363.97	R120	-41 185.52	3 064	855.26
L121	-50 061.43	3 061	336.07	R121	-41 541.64	3 064	687.92
L122	-50 105.17	3 061	311.60	R122	-41 966.68	3 064	488.20
L123	-50 125.11	3 061	302.27	R123	-42 280.24	3 064	340.86
L124	-50 130.39	3 061	299.80	R124	-42 551.02	3 064	213.53
L125	-50 138.84	3 061	295.85	R125	-42 872.41	3 064	062.41
L126	-50 205.00	3 061	268.34	R126	-43 681.82	3 063	681.80
L127	-50 291.95	3 061	239.55	R127	-43 747.29	3 063	651.02
L128	-52 411.32	3 060	563.63	R128	-43 864.92	3 063	595.47
L129	-52 502.34	3 060	535.18	R129	-43 916.08	3 063	573.88
L130	-52 574.33	3 060	512.68	R130	-43 973.07	3 063	554.14
L131	-52 728.81	3 060	474.37	R131	-44 578.98	3 063	382.19
L132	-53 928.96	3 060	191.48	R132	-45 212.05	3 063	202.53
L133	-54 683.18	3 060	013.71	R133	-45 348.75	3 063	163.73
L134	-55 096.47	3 059	916.33	R134	-46 196.72	3 062	923.09
L135	-55 806.44	3 059	749.09	R135	-46 396.06	3 062	866.52
L135X	-55 886.41	3 059	716.61	R136	-47 009.72	3 062	692.39
L136	-55 911.12	3 059	712.78	R137	-47 862.41	3 062	450.42
L136X	-55 997.56	3 059	722.08	R138	-48 196.73	3 062	355.55
L137	-56 013.30	3 059	721.17	R139	-48 652.09	3 062	226.45
L138	-56 084.96	3 059	722.20	R140	-49 150.07	3 062	085.26
L139	-56 148.28	3 059	727.93	R141	-49 179.17	3 062	076.31
L140	-56 247.40	3 059	746.01	R142	-49 238.26	3 062	054.41
L141	-56 328.13	3 059	768.65	R143	-49 293.41	3 062	029.90
L142	-56 380.28	3 059	787.67	R144	-49 343.54	3 062	004.01
L143	-56 460.01	3 059	821.23	R145	-49 441.21	3 061	940.49
L144	-56 717.61	3 059	960.77	R146	-49 482.52	3 061	908.42
L145	-56 730.48	3 059	966.27	R147	-49 523.53	3 061	872.26
L146	-56 762.64	3 059	989.62	R148	-49 897.24	3 061	501.14
L147	-56 805.66	3 060	012.12	R149	-49 928.03	3 061	472.10
L148	-56 855.69	3 060	035.81	R150	-49 963.84	3 061	440.87
L149	-56 913.29	3 060	056.66	R151	-49 970.05	3 061	436.21
L150	-57 027.95	3 060	085.95	R152	-50 003.99	3 061	410.80
L151	-57 069.39	3 060	092.40	R153	-50 029.54	3 061	392.52

Vel  
Sheet

13

Van  
of

14

P1066/18

PADRESERWE KOÖRDINATE / ROAD RESERVE CO-ORDINATES					
LINKERKANT/LEFT HAND SIDE			REGTERKANT/RIGHT HAND SIDE		
	Y	X	WG 25°	Y	X
L152	-57 142.66	3 060 099.00		R154	-50 087.56 3 061 354.77
L153	-57 210.07	3 060 100.54		R155	-50 163.82 3 061 319.74
L154	-57 288.22	3 060 097.56		R156	-50 217.47 3 061 297.94
L155	-57 988.76	3 060 065.37		R157	-50 301.31 3 061 269.48
L156	-58 161.90	3 060 054.66		R158	-52 421.01 3 060 593.21
L157	-58 495.27	3 060 039.49		R159	-52 580.55 3 060 543.26
L158	-58 597.91	3 060 037.82		R160	-52 736.86 3 060 504.21
L159	-58 711.58	3 060 035.93		R161	-53 998.25 3 060 207.23
L160	-58 768.53	3 060 036.26		R162	-54 691.66 3 060 043.96
L161	-58 842.05	3 060 036.70		R163	-55 101.86 3 059 947.45
				R164	-55 836.96 3 059 774.50
				R165	-55 919.77 3 059 760.27
				R166	-55 987.04 3 059 754.09
				R167	-56 071.15 3 059 752.87
				R168	-56 149.13 3 059 760.25
				R169	-56 249.00 3 059 778.60
				R170	-56 369.66 3 059 818.25
				R171	-56 441.00 3 059 854.22
				R172	-56 624.25 3 059 963.65
				R173	-56 631.07 3 059 956.68
				R174	-56 676.19 3 059 981.83
				R175	-56 711.01 3 060 004.52
				R176	-56 704.39 3 060 006.41
				R177	-56 794.69 3 060 056.62
				R178	-56 962.44 3 060 121.46
				R179	-57 156.03 3 060 136.90
				R180	-57 259.82 3 060 129.56
				R181	-57 260.43 3 060 129.52
				R182	-57 286.94 3 060 129.18
				R183	-58 011.26 3 060 096.07
				R184	-58 598.56 3 060 064.12
				R185	-58 844.60 3 060 092.17

Vel Sheet	14	Van of	14	P1066/18
--------------	----	-----------	----	----------