

DEPARTMENT OF TRANSPORT

NO. 418

15 MARCH 2019

**THE SOUTH AFRICAN NATIONAL ROADS
AGENCY SOC LIMITED**

Registration No: 1998/009584/30

DECLARATION AMENDMENT OF NATIONAL ROAD N9 SECTION 7

AMENDMENT OF DECLARATION No. 1355 OF 2008.

By virtue of section 40(1)(b) of the South African National Roads Agency Limited and the National Roads Act 1998 (Act No. 7 of 1998), I hereby amend Declaration No. 1355 of 2008 by substituting it in its entirety, with the accompanying sheets 1 to 32 of Plan No. P1065/18.

(National Road N9 Section 7: Middelburg – Colesberg)**MINISTER OF TRANSPORT**

DEPARTEMENT VAN VERVOER

NO. 418

15 MAART 2019

**DIE SUID-AFRIKAANSE NASIONALE
PADAGENTSKAP MSB BEPERK**

Registrasie No: 1998/009584/30

VERKLARING WYSIGING VAN NASIONALE PAD N9 SEKSIE 7

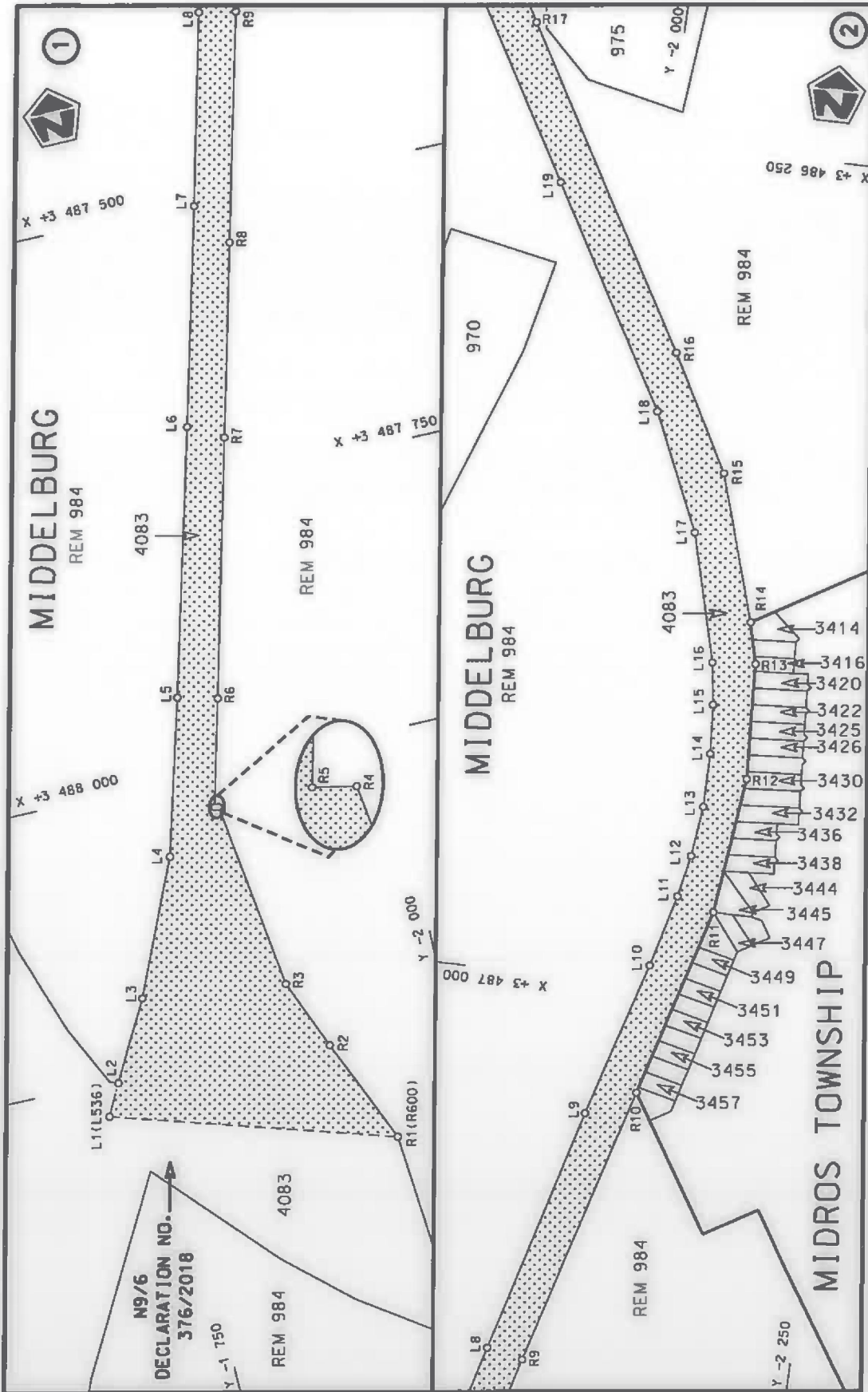
WYSIGING VAN VERKLARING No. 1355 VAN 2008.

Kragtens Artikel 40(1)(b) van die Suid-Afrikaanse Nasionale Padagentskap Beperk en Nasionale Paaie Wet 1998 (Wet No. 7 van 1998), wysig ek hiermee Verklaring No. 1355 van 2008 deur dit in sy geheel te vervang, met bygaande velle 1 tot 32 van Plan No. P1065/18.

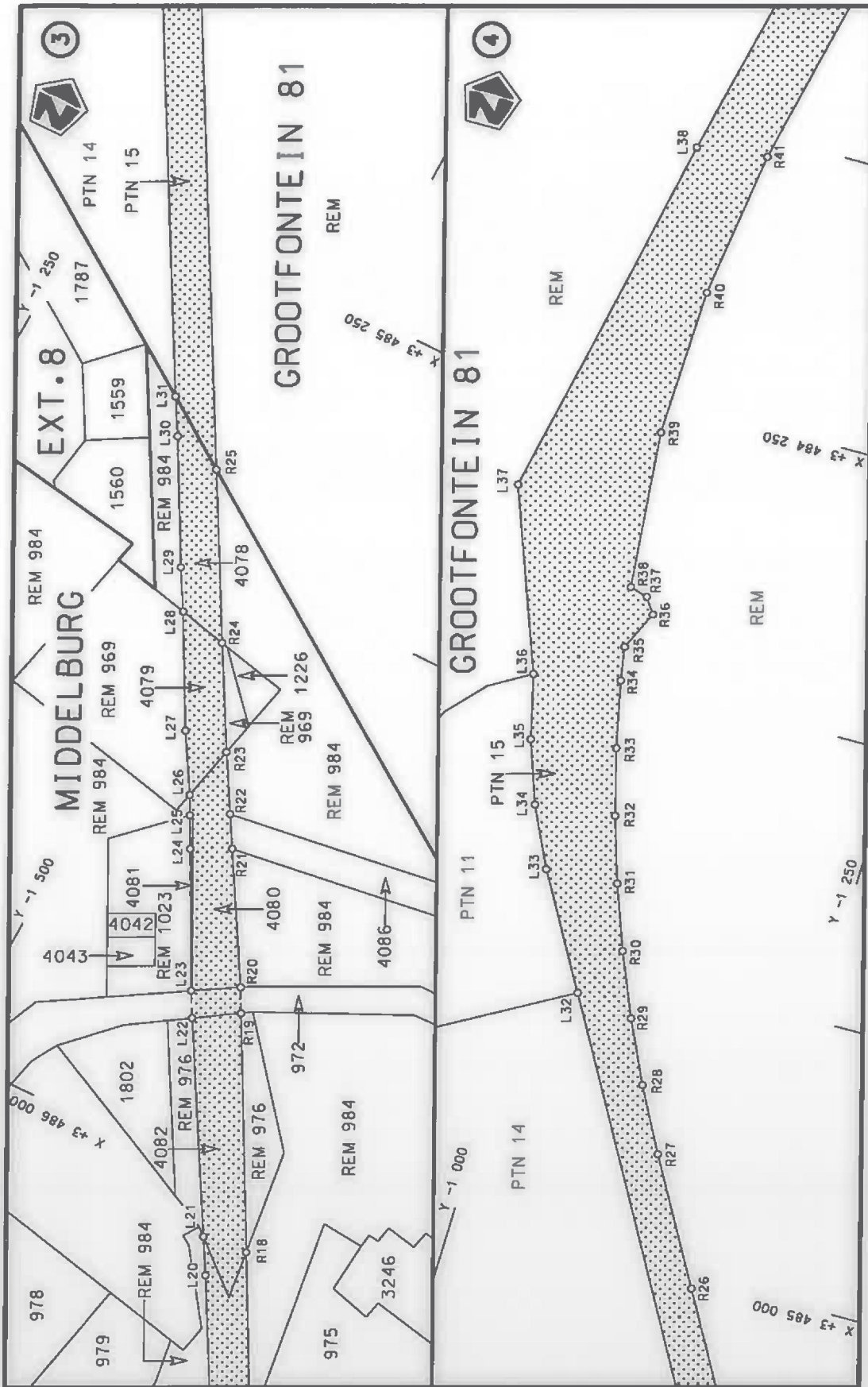
(Nasionale Pad N9 Seksie 7: Middelburg – Colesberg)



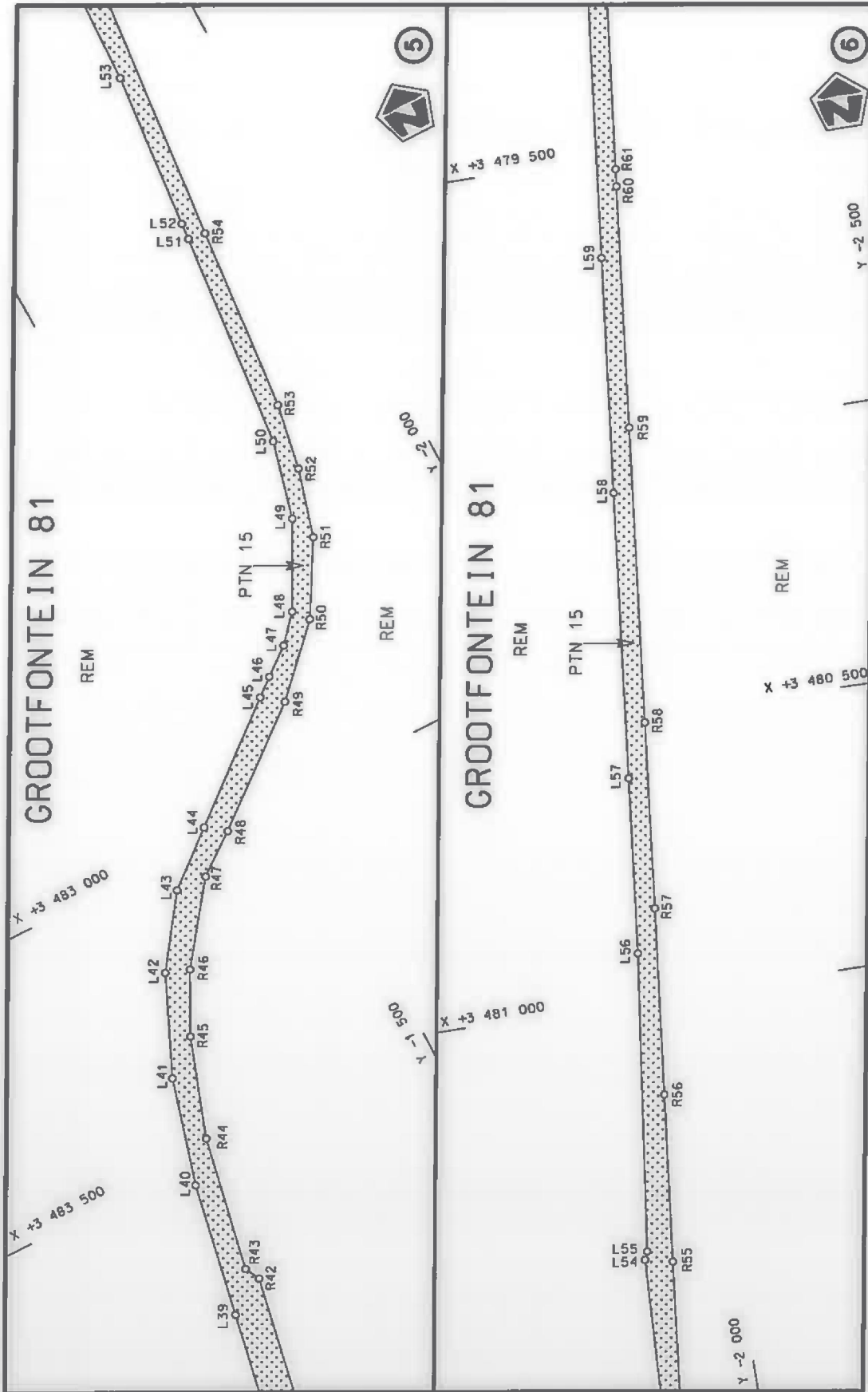
MINISTER VAN VERVOER




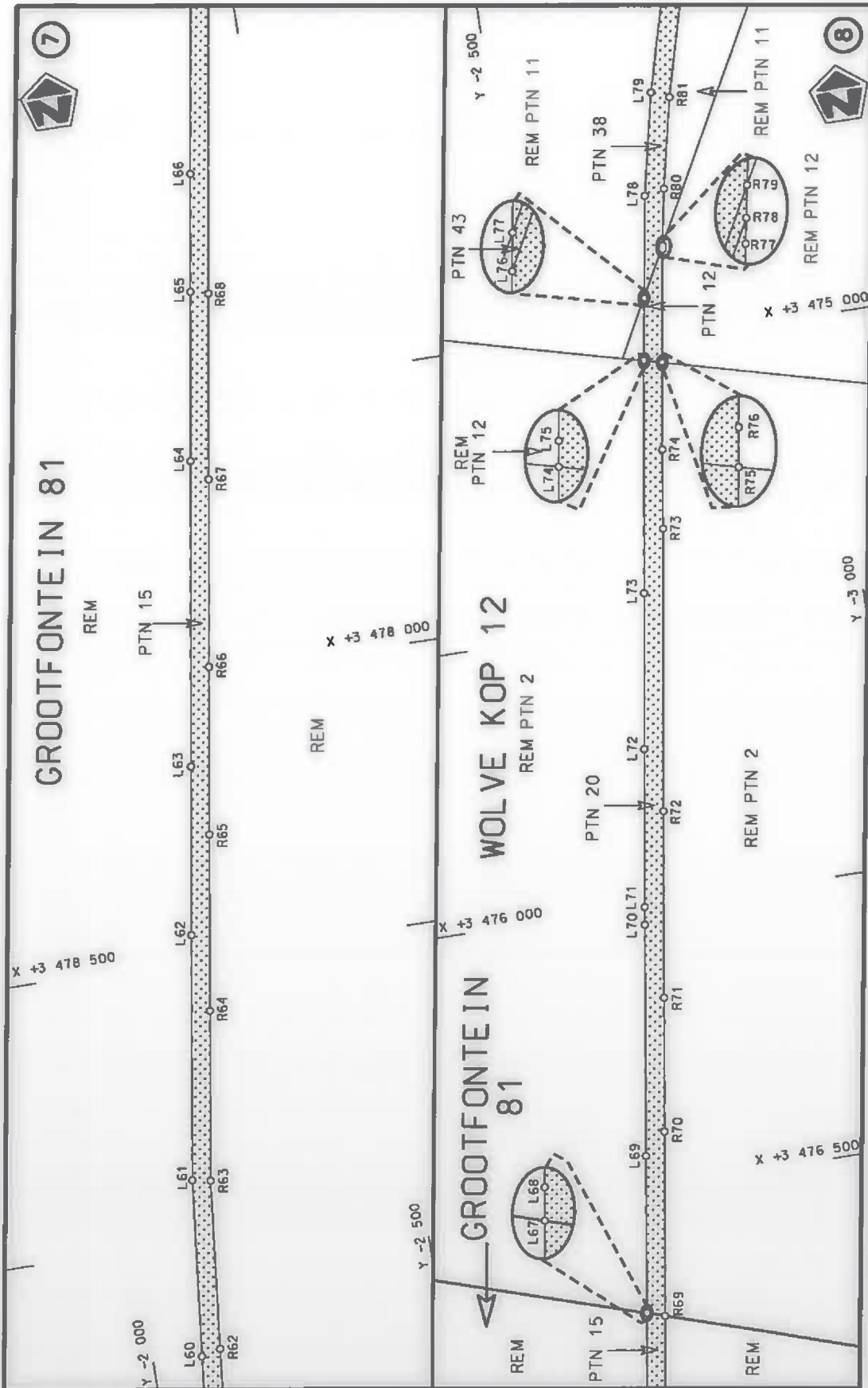
Die Suid Afrikaanse Nasionale Padagentskap MSB Bpk The South African National Roads Agency SOC Ltd	Die figuur getoon The figure shown	steldie padreserwe voor van 'n gedeelte represents the road reserve of a portion van Nasionale Roete N9 of National Route Section	Vel Sheet 1 of 32
			Plan P1065/18



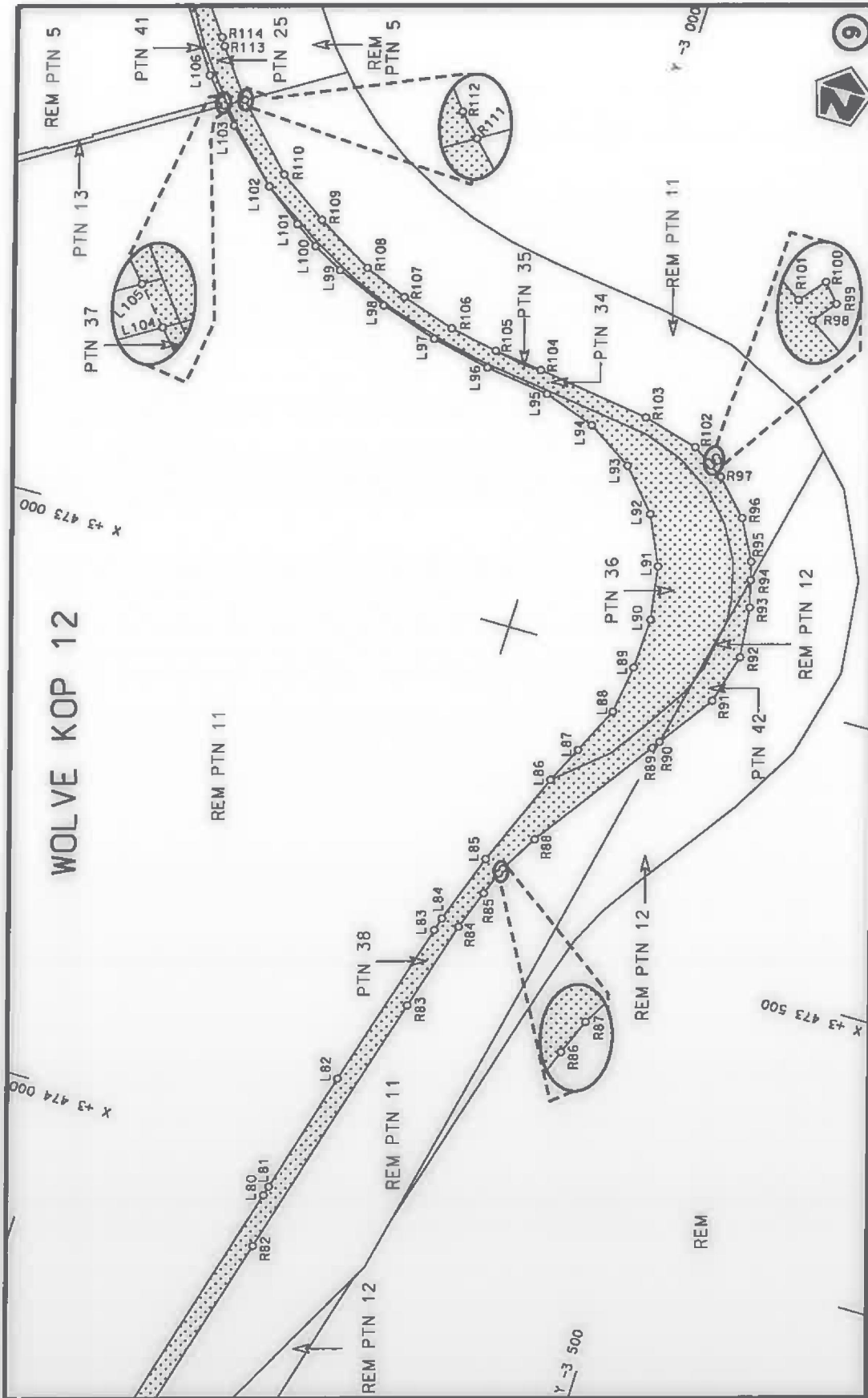
<p>Die Suid Afrikaanse Nasionale Padagentskop MSB Bpk The South African National Roads Agency SOC Ltd</p>	<p>Die figuur getoon The figure shown</p>	<p>stede padreserwe voor van 'n gedeelte represents the road reserve of a portion van Nasionale Roete NG Sektie of National Route 7</p>	<p>Vel Sheet 2 of 32 Plan P1065/18</p>
---	---	---	--




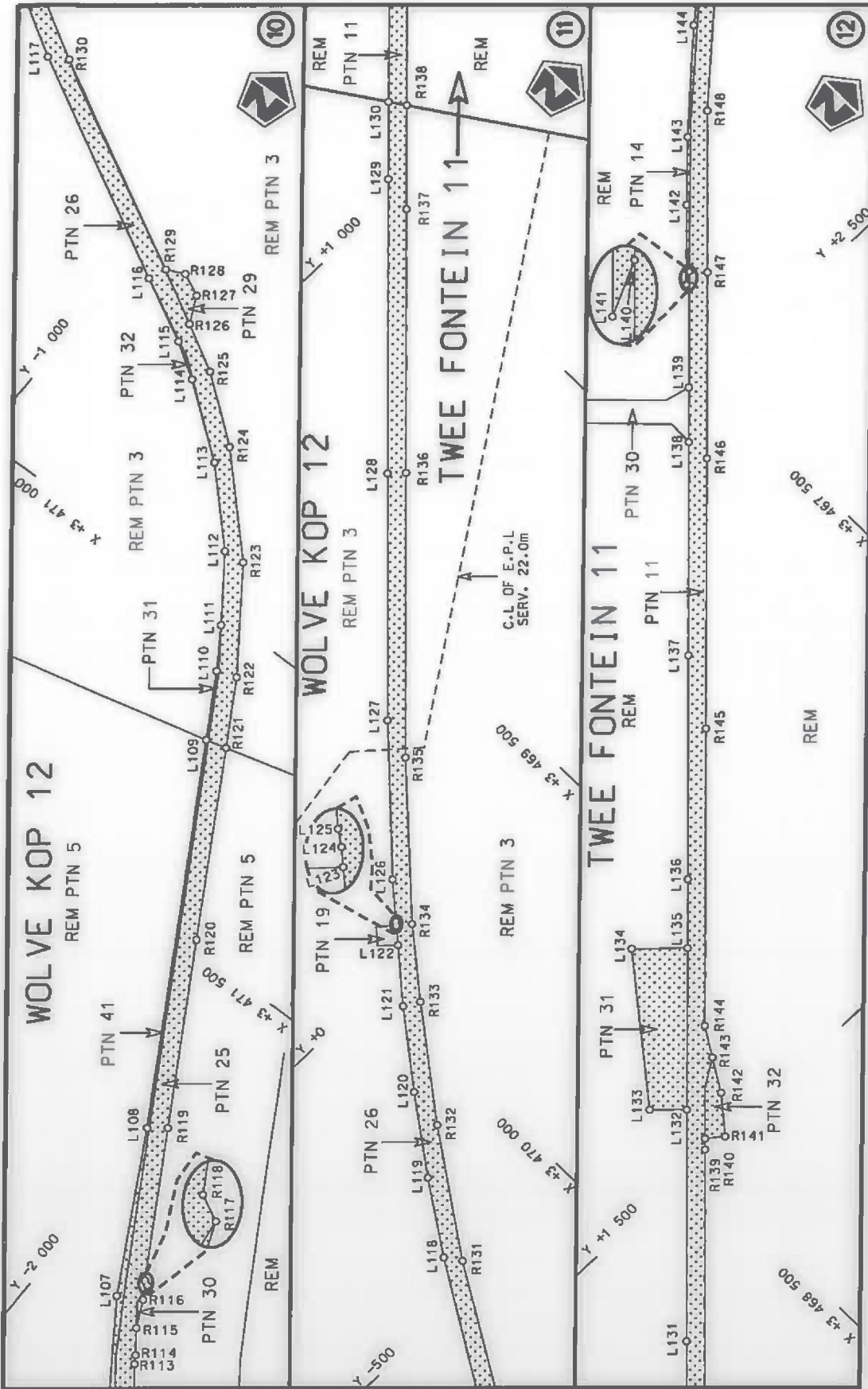
Die Suid Afrikaanse Nasionale Padagentskap MSB Bpk The South African National Roads Agency SOC Ltd	Die figuur getoon The figure shown		steldie padreserwe voor van 'n gedeelte represents the road reserve of a portion van Nasionale Roete N9 of National Route Section	Vel 3 van 32
				Sheet 3 of 32
				Plan P1065/18




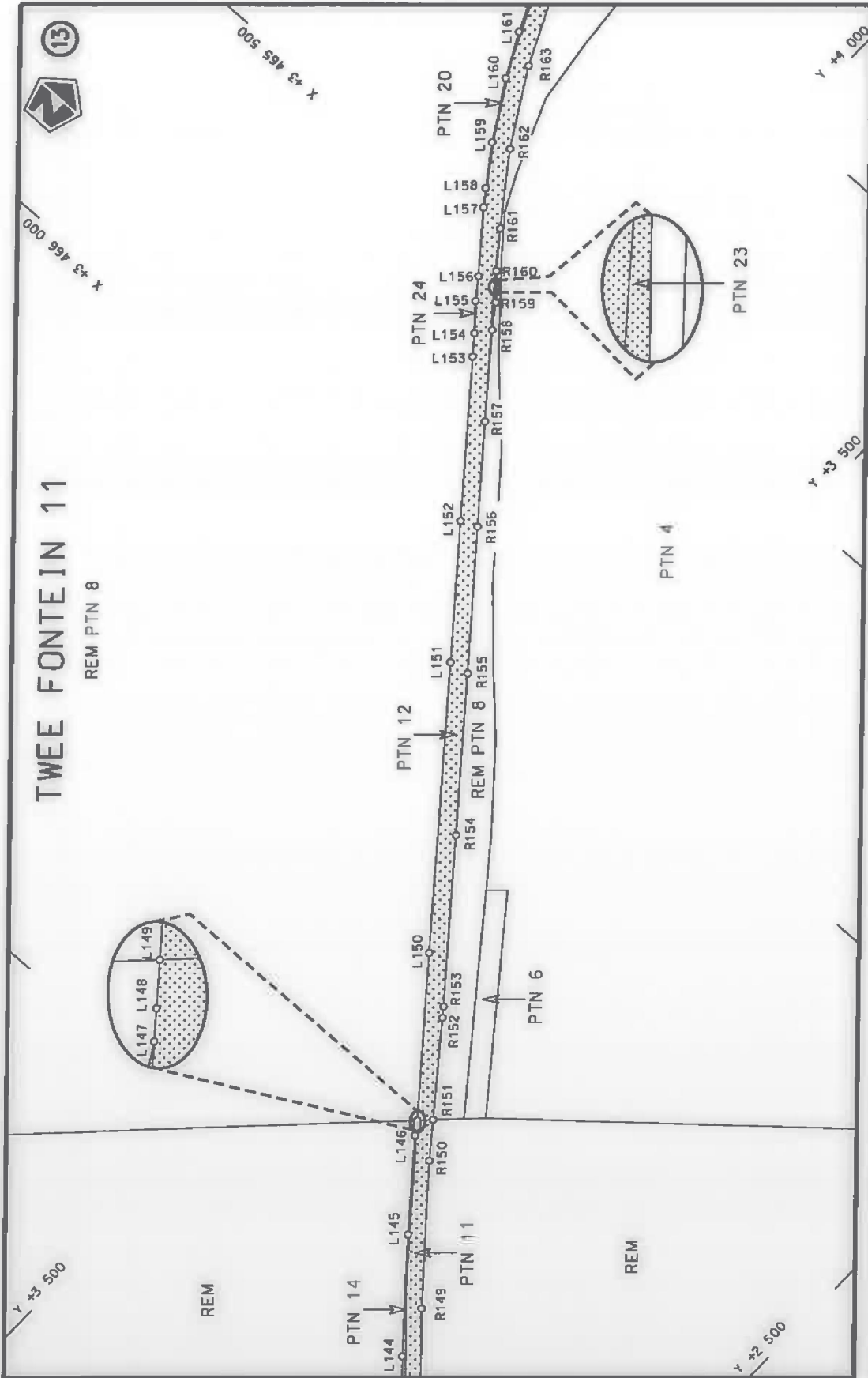
<p>Die Suid Afrikaanse Nasionale Padagentskap MSB Bpk The South African National Roads Agency SOC Ltd</p>	<p>Die figuur getoon The figure shown</p>	<p>steldie padreserwe voor van 'n gedeelte represents the road reserve of a portion van Nasionale Roete N9 of National Route N9</p> <p>Seksie Section</p> <p>7</p>	<p>Vel Sheet</p> <p>4 van of</p> <p>32</p> <p>Plan P1065/18</p>
---	---	--	---



Die Suid Afrikaanse Nasionale Padagentskop MSB Bpk The South African National Roads Agency SOC Ltd	Die figuur getoon The figure shown		steldie padreserwe voor van 'n gedeelte represents the road reserve of a portion	Vel Sheet 5 of 32
			van Nasionale Roete N9 of National Route	Seksie N9 Section



Die Suid Afrikaanse Nasionale Padagentskap MSB Bpk The South African National Roads Agency SOC Ltd	Die figuur getoon The figure shown		stel die padreserwe voor van 'n gedeelte represents the road reserve of a portion van Nasionale Roete N9 of National Route N9 Section	Vel Sheet 6 of 32
				Plan P1065/18

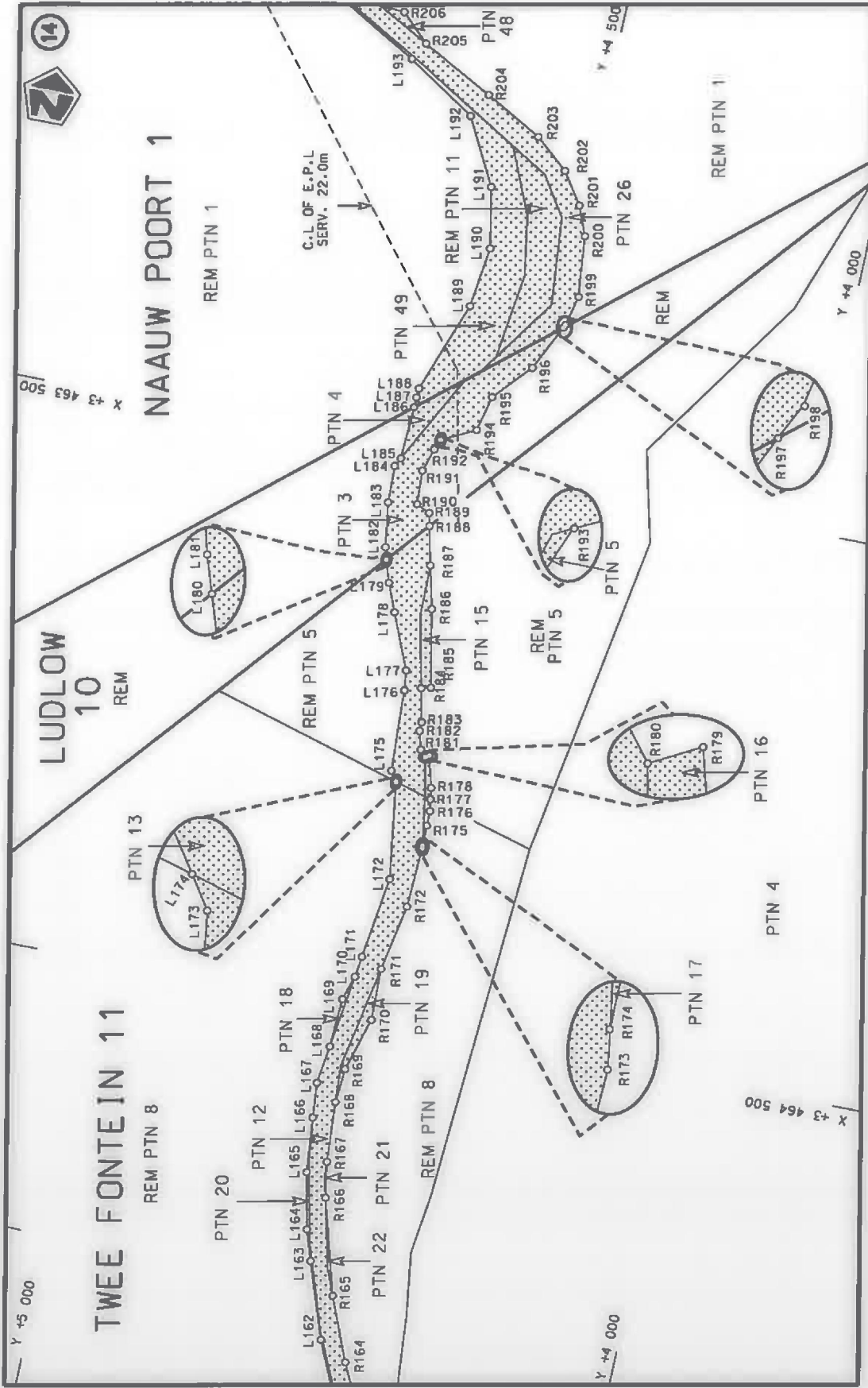


TWEЕ FONTEIN 11

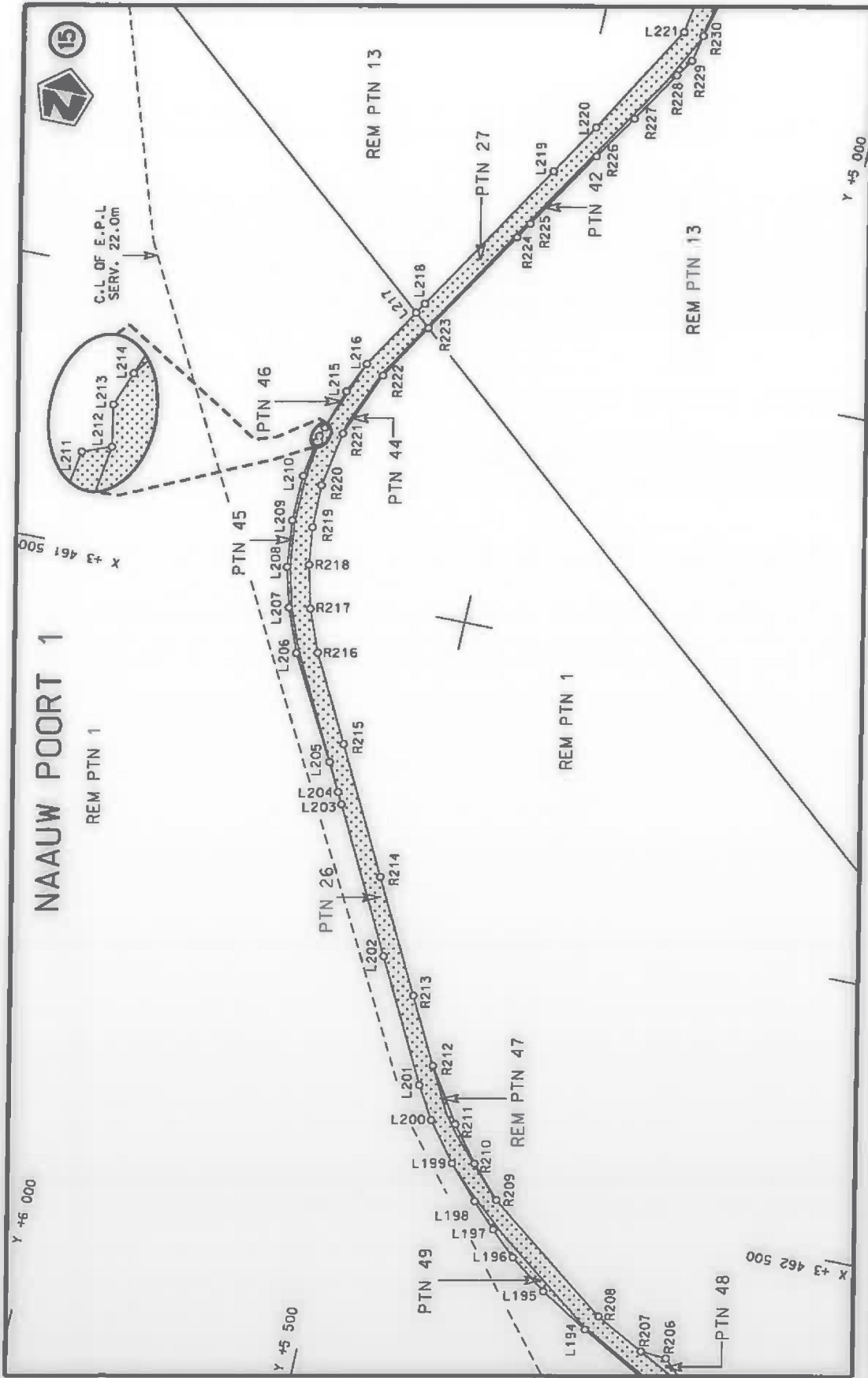
REM PTN 8



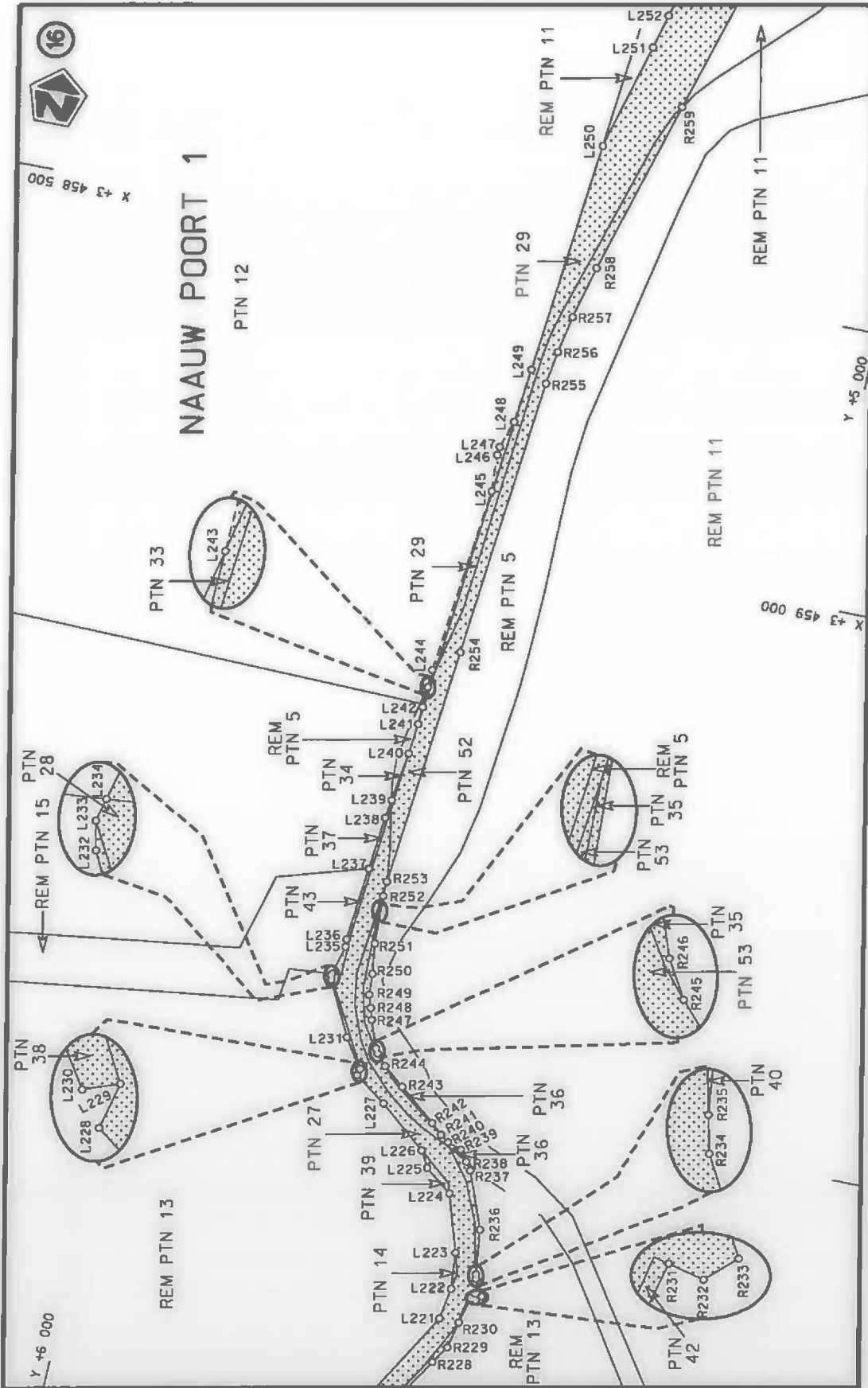
Die Suid Afrikaanse Nasionale Padagentskap MSB Bpk The South African National Roads Agency SOC Ltd	Die figuur getoon The figure shown	stede podreserwe voor van 'n gedeelte represents the road reserve of a portion van Nasionale Roete N9 of National Route Section	Vel 7 van 32 Sheet of Plan P1065/18
	Die figuur getoon The figure shown	stede podreserwe voor van 'n gedeelte represents the road reserve of a portion van Nasionale Roete N9 of National Route Section	Vel 7 van 32 Sheet of Plan P1065/18



Die Suid Afrikaanse Nasionale Poadagentskap MSB Bpk The South African National Roads Agency SOC Ltd	Die figuur getoon The figure shown		steldie padreserwe voor van 'n gedeelte represents the road reserve of a portion van Nasionale Roete N9 of National Route 9	Vel Sheet 8 of 32
				Plan P1065/18



<p>Die Suid Afrikaanse Nasionale Padagantskap MSB Bpk The South African National Roads Agency SOC Ltd</p>	<p>Die figuur getoon The figure shown</p> 	<p>stelt die padreserwe voor van 'n gedeelte represents the road reserve of a portion van Nasionale Roete N9 of National Route</p> <p>Seksie Section</p> <p>7</p>	<p>Val Sheet</p> <p>9 van of</p> <p>32</p> <p>Plan P1065/18</p>
---	---	---	---



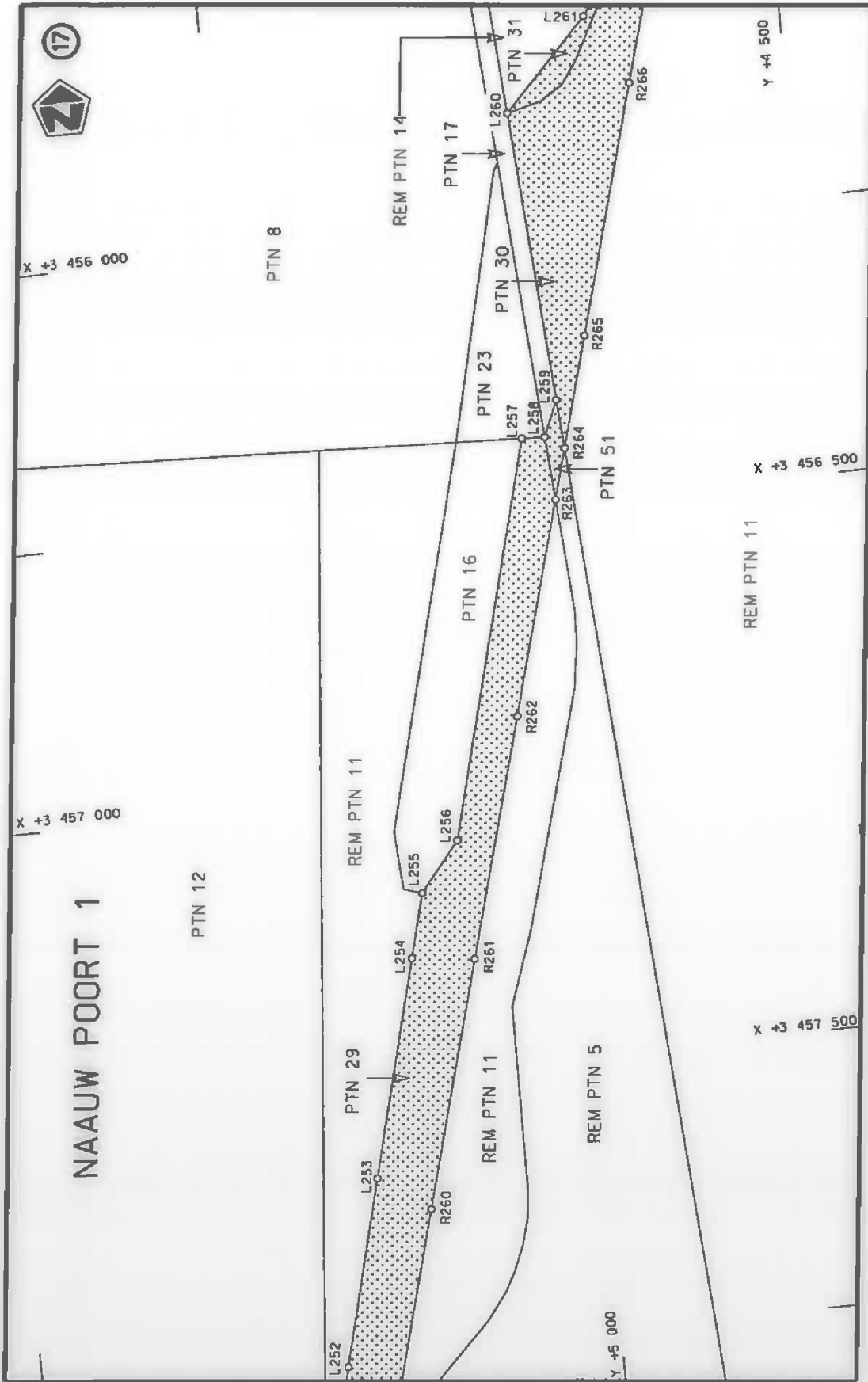
Vel 10 of 32
Sheet 10 of 32
Plan P1065/18

7
Seksie
Section
N9
of National Route

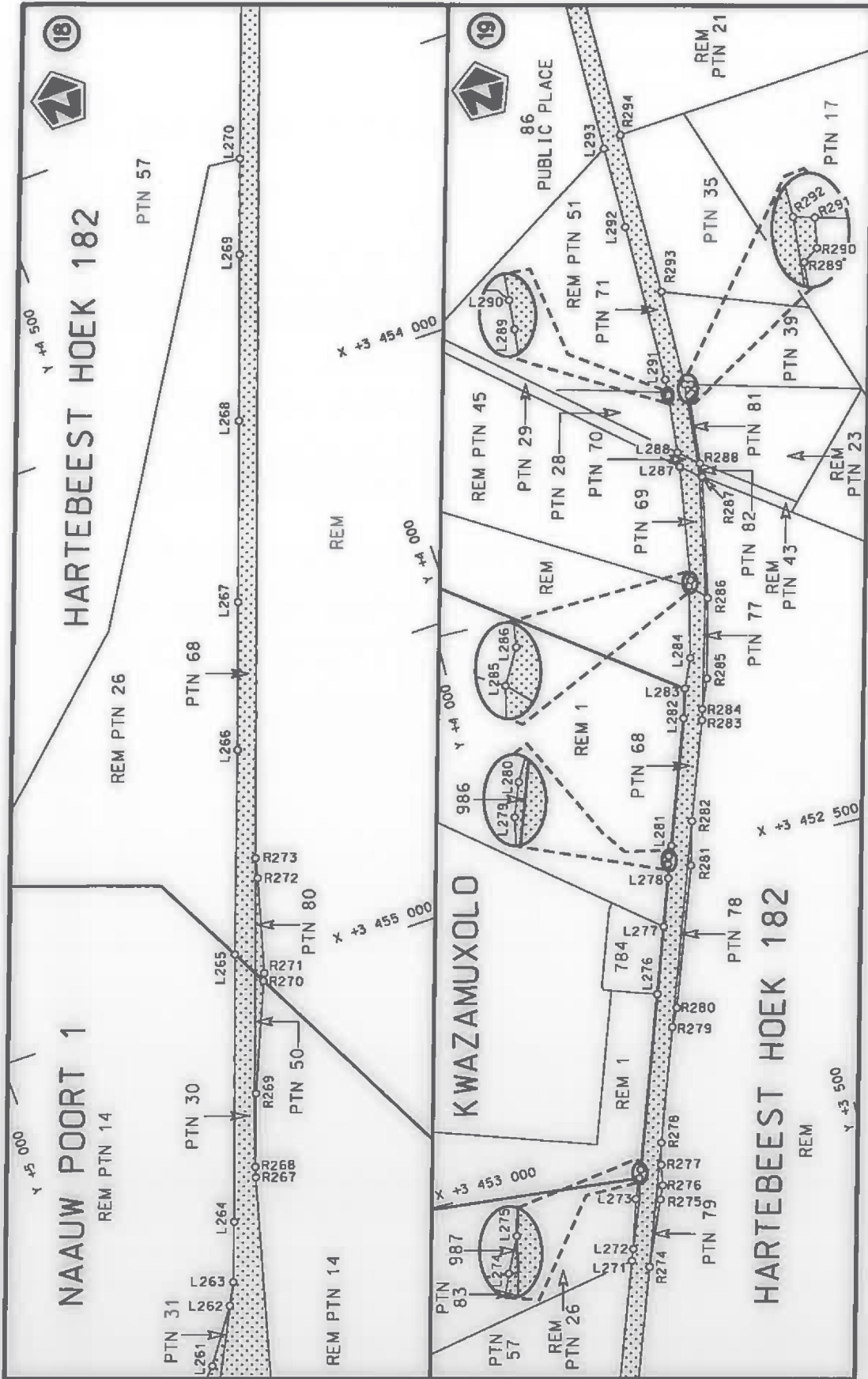


Die figuur getoon
The figure shown

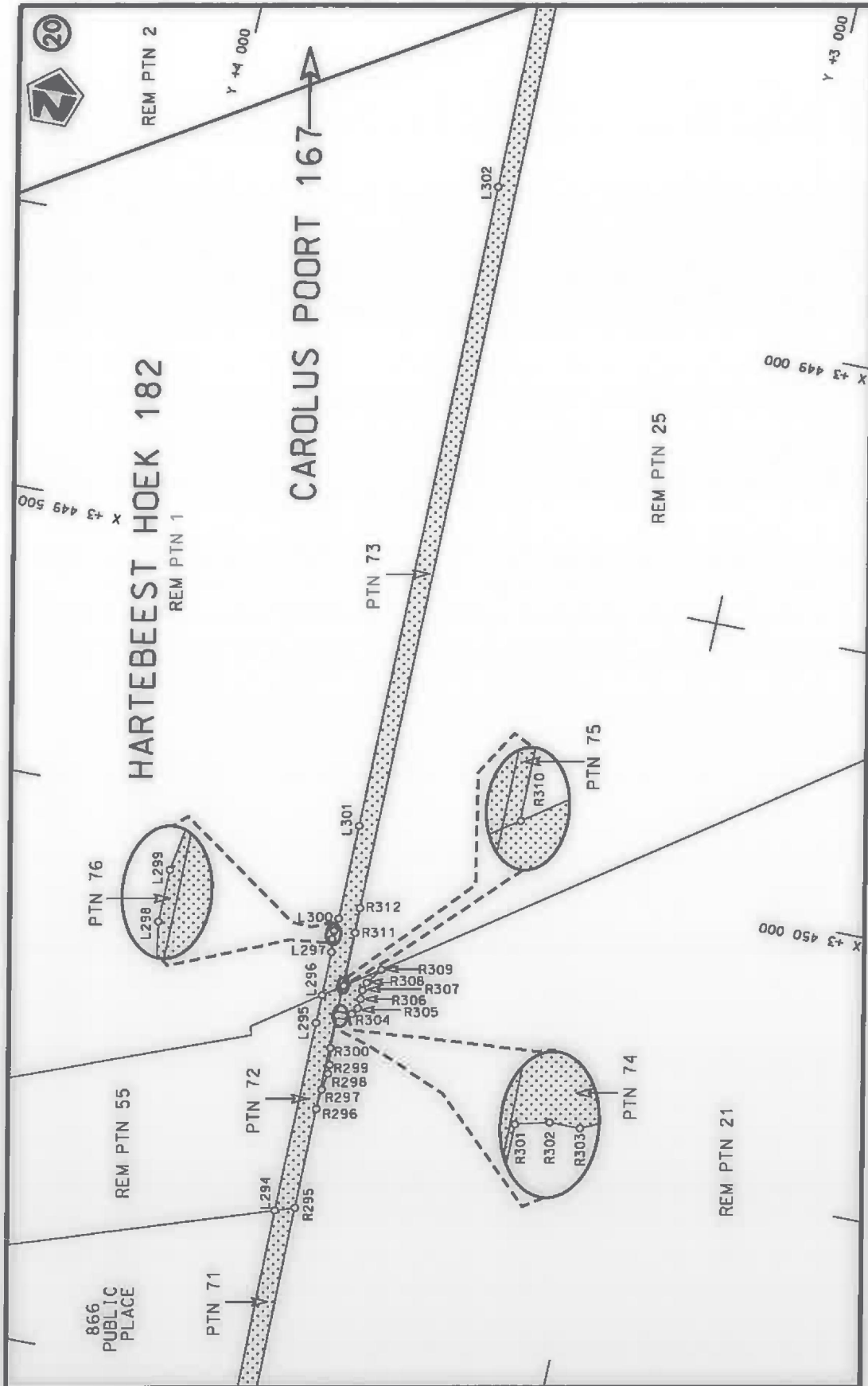
Die Suid Afrikaanse Nasionale Padagentskap M&S Bpk
The South African National Roads Agency SOC Ltd



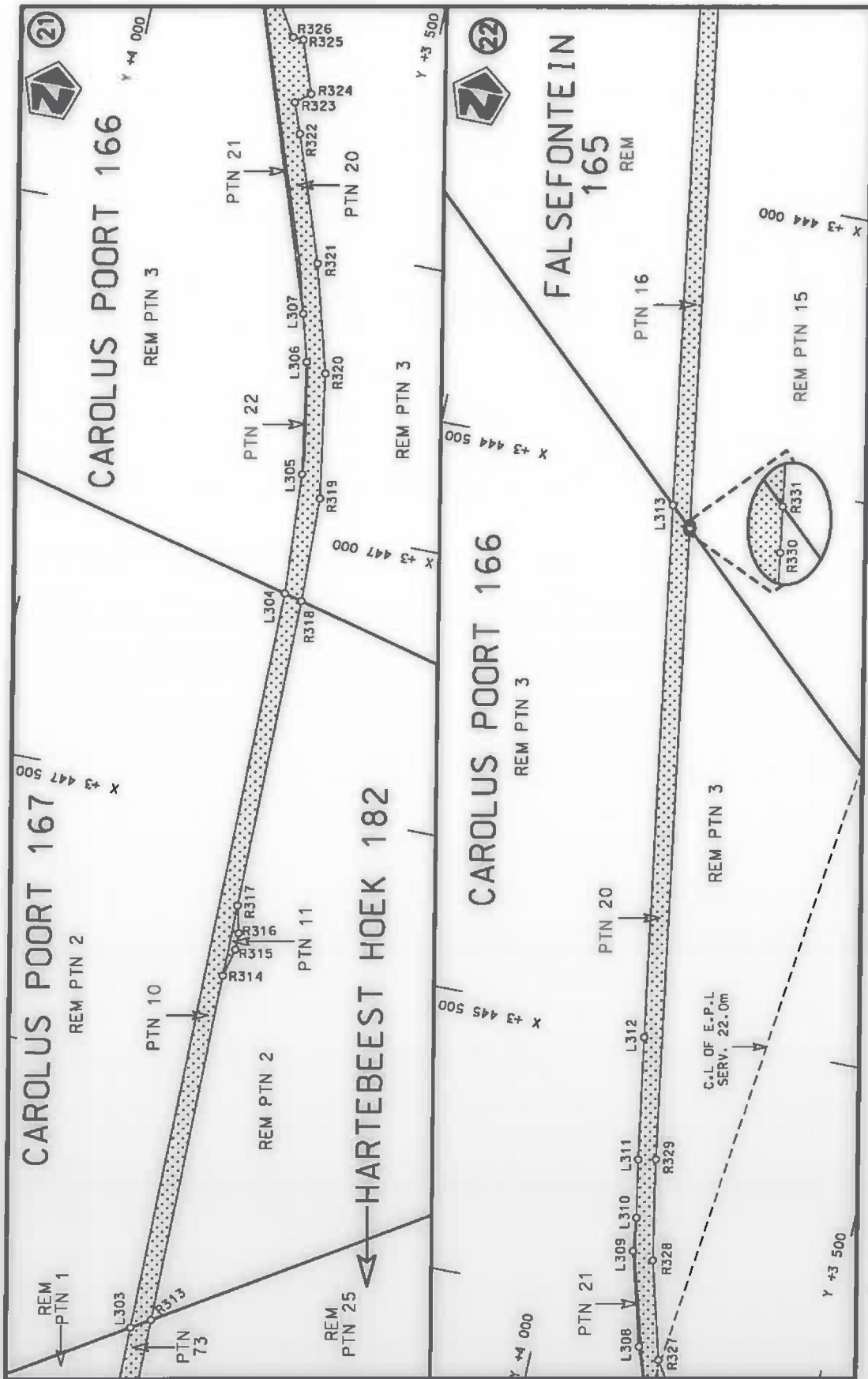
<p>Die Suid Afrikaanse Nasionale Padagentskap MSB Bpk The South African National Roads Agency SOC Ltd</p>	<p>Die figuur getoon The figure shown</p> 	<p>stetidie padreserwe voor van 'n gedeelte represents the road reserve of a portion van Nasionale Roete N9 of National Route</p> <p style="text-align: center;">7</p> <p style="text-align: center;">Seksie Section</p>	<p>Vel Sheet 11 van 32 Plan P1065/18</p>
---	---	--	--



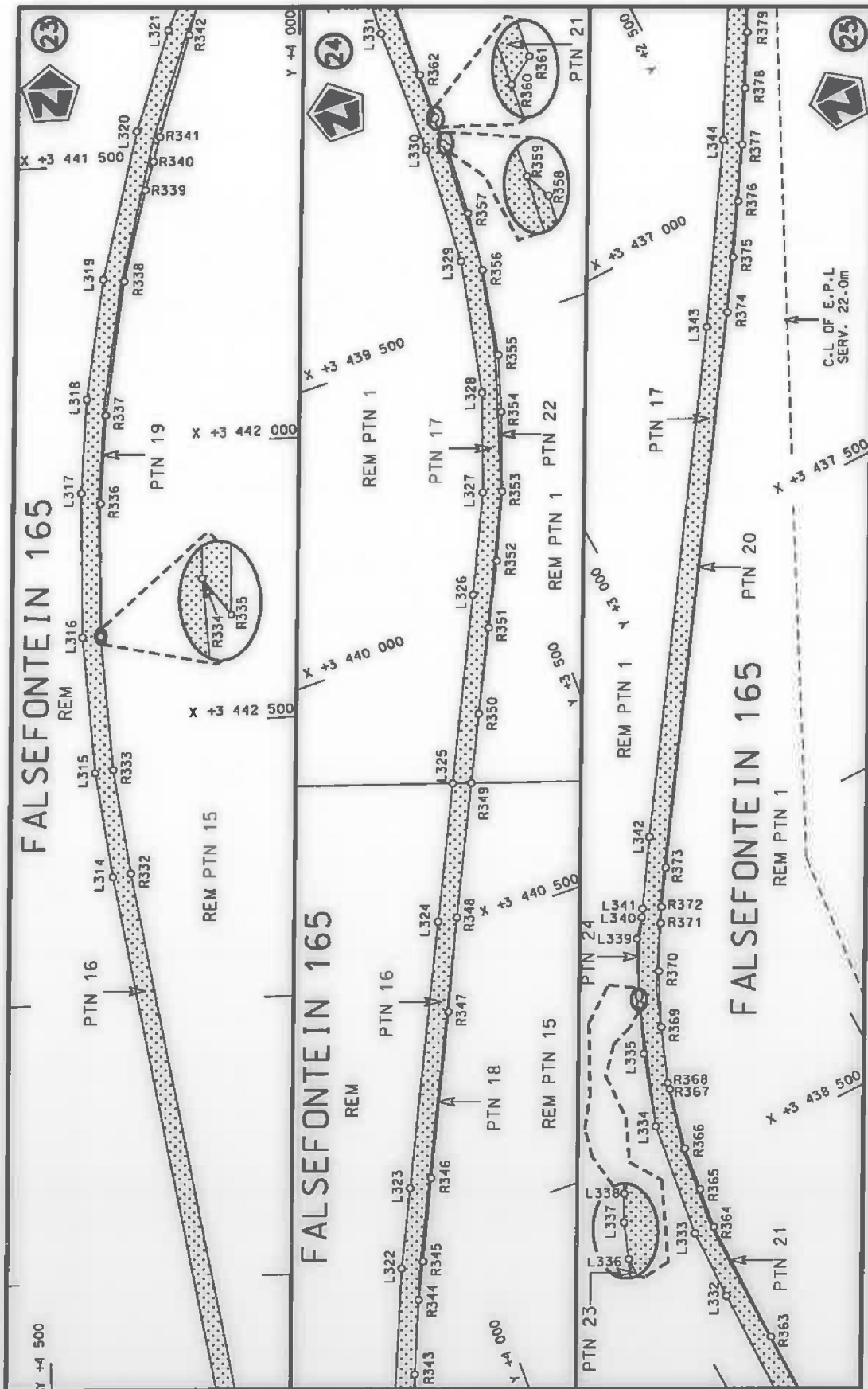
Die Suid Afrikaanse Nasionale Padagentskap MSB Bpk The South African National Roads Agency SOC Ltd	Die figuur getoon The figure shown		steldie padreserwe voor van 'n gedeelte represents the road reserve of a portion van Nasionale Roete N9 of National Route	
			7	Plan P1065/18
		Vel Sheet 12 of 32		



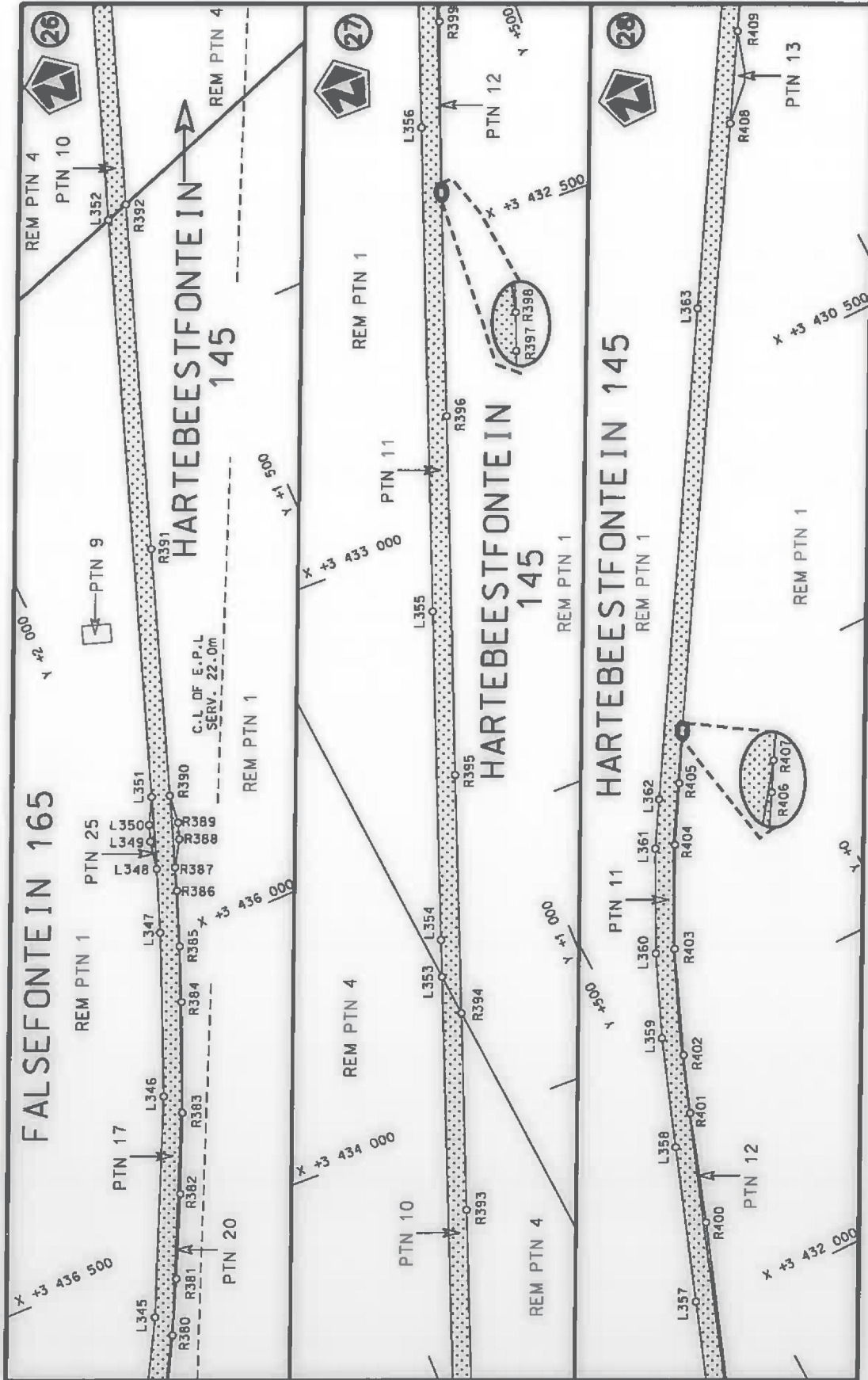
<p>Die Suid-Afrikaanse Nasionale Padagentskap MSB Bpk The South African National Roads Agency SOC Ltd</p>	<p>Die figuur getoon The figure shown</p> 	<p>steldie padreserve voor van 'n gedeelte represents the road reserve of a portion van Nasionale Raete N9 of National Route</p> <p>Seksie Section</p> <p>N9 7</p>	<p>Vel Sheet</p> <p>13 of</p> <p>van 32</p> <p>Plan P1065/18</p>
---	---	--	--

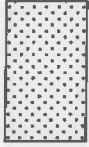


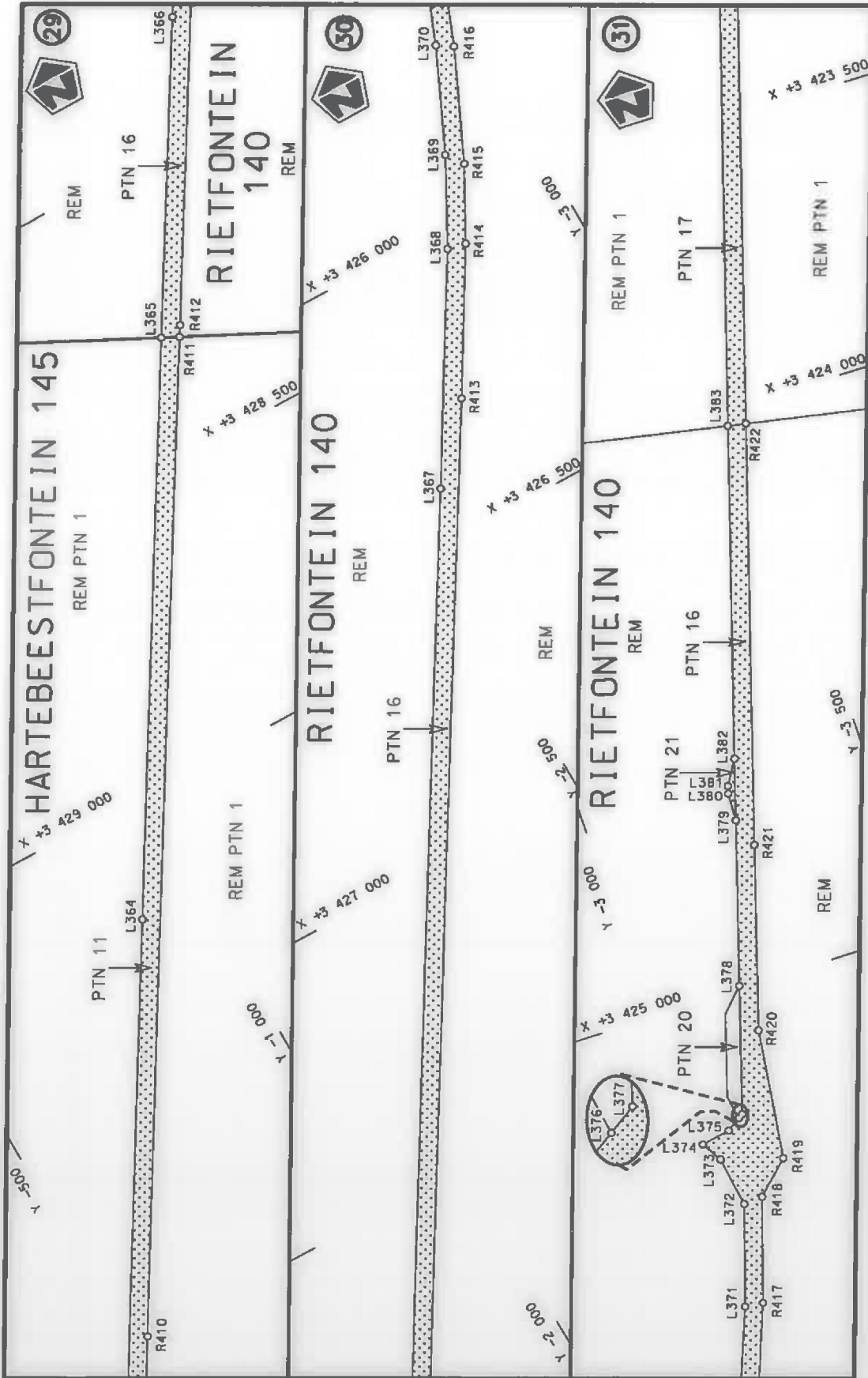
<p>Die Suid Afrikaanse Nasionale Padagentskap MSB Bpk The South African National Roads Agency SOC Ltd</p>	<p>Die figuur getoon The figure shown</p>	<p>stelt die padreserwe voor van 'n gedeelte represents the road reserve of a portion van Nasionale Roete N9 of National Route N9</p>	<p>Vel Sheet 14 van 32 Plan P1065/18</p>
---	---	---	--



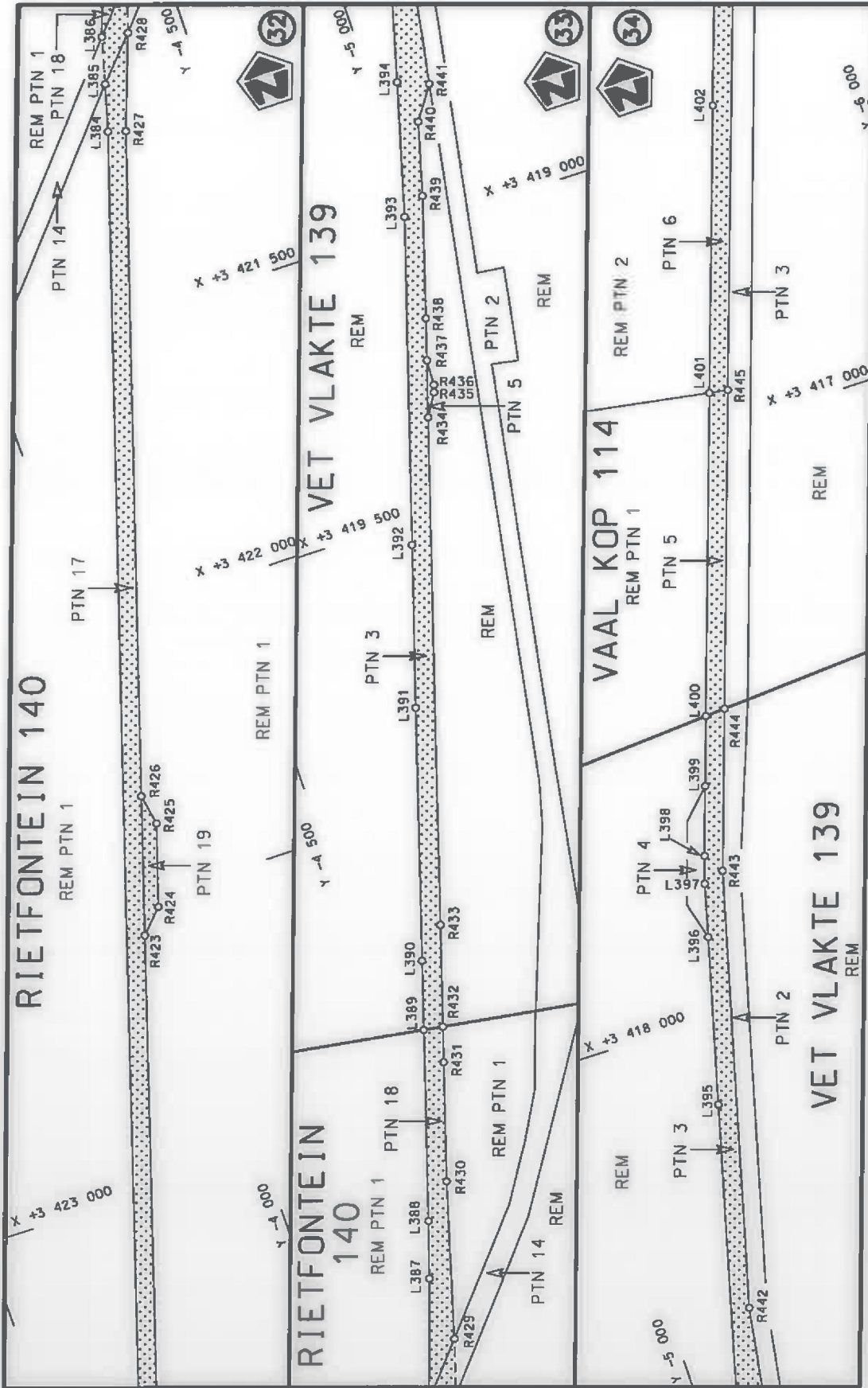
Die Suid-Afrikaanse Nasionale Padagentskap MSB Bpk The South African National Roads Agency SOC Ltd	Die figuur getoon The figure shown		steldie padreserve voor van 'n gedeelte represents the road reserve of a portion van Nasionale Roete N9 of National Route	7
			Vel Sheet 15 of 32 Plon P1065/18	



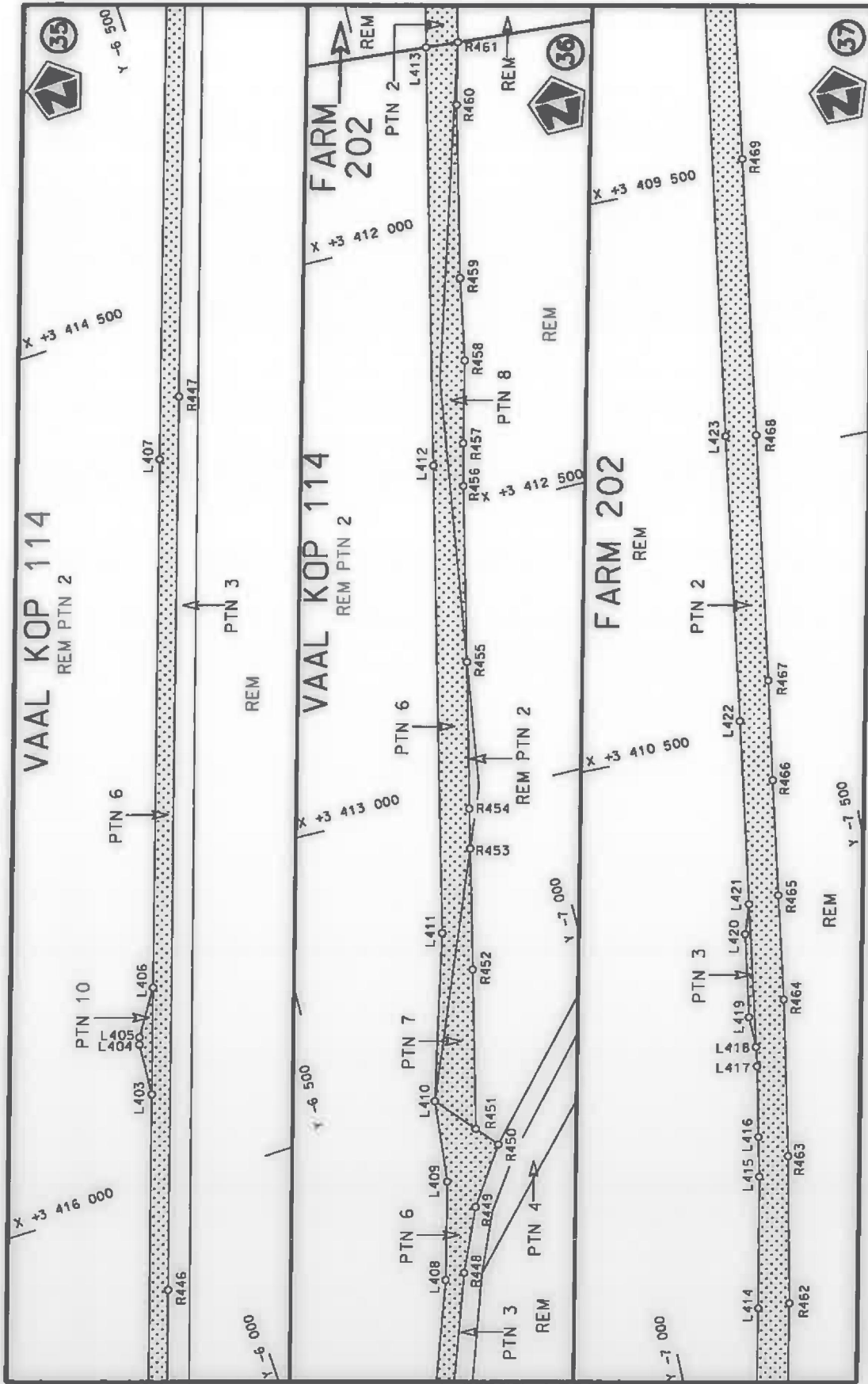
Die Suid Afrikaanse Nasionale Padagentskap MSB Bpk The South African National Roads Agency SOC Ltd	Die figuur getoon The figure shown		steldie padreserwe voor van 'n gedeelte represents the road reserve of a portion van Nasionale Roete N9 of National Route Section	Vel Sheet	van of	32
				Plan		P1065/18



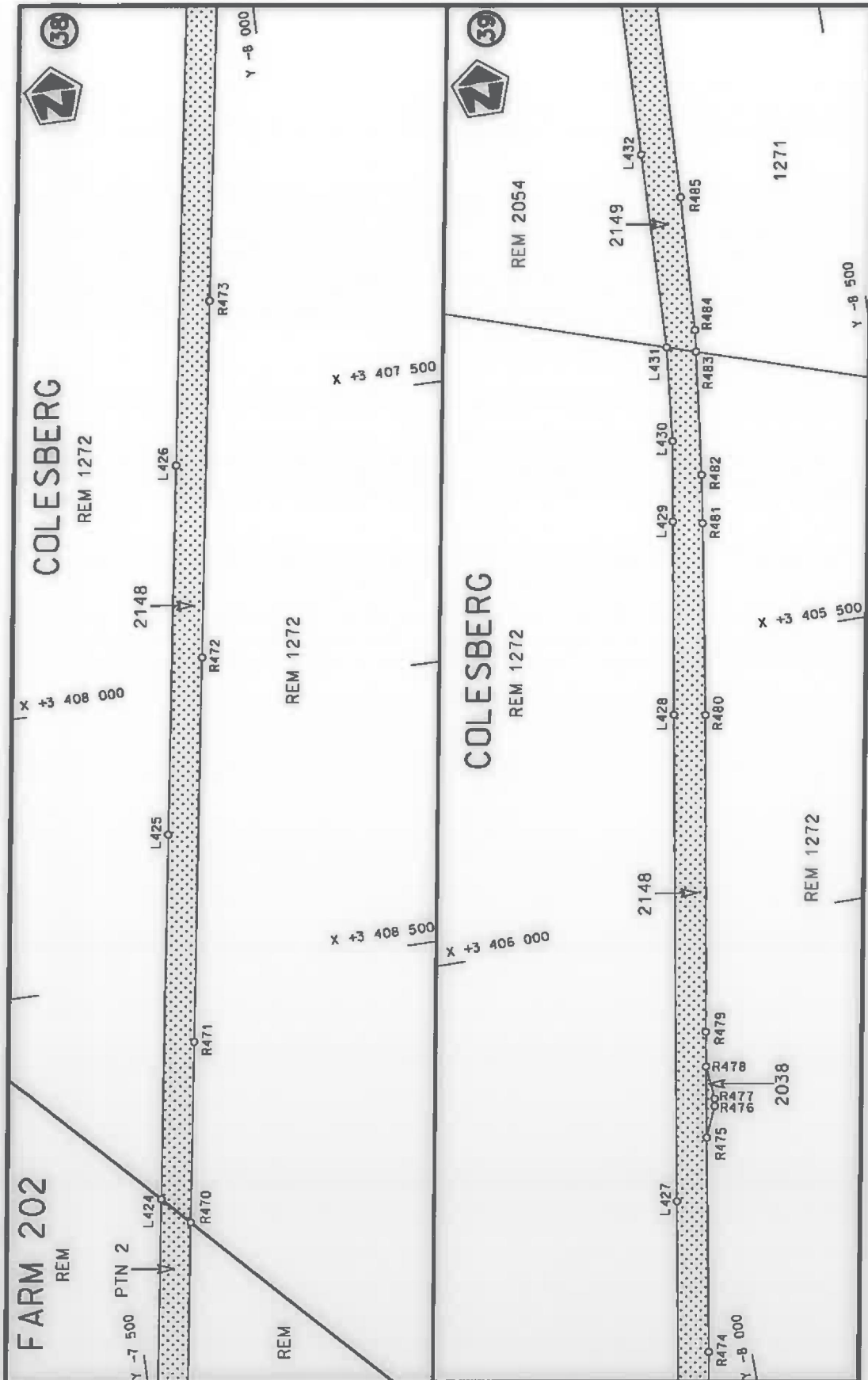
<p>Die Suid-Afrikaanse Nasionale Padagentskap MSB Bpk The South African National Roads Agency SOC Ltd</p>	<p>Die figuur getoon The figure shown</p> 	<p>stelt die padreserwe voor van 'n gedeelte represents the road reserve of a portion van Nasionale Roete N9 of National Route</p> <p>Seksie 7 Section</p>	<p>Vel Sheet 17 van 32 Plan P1065/18</p>
---	---	--	--




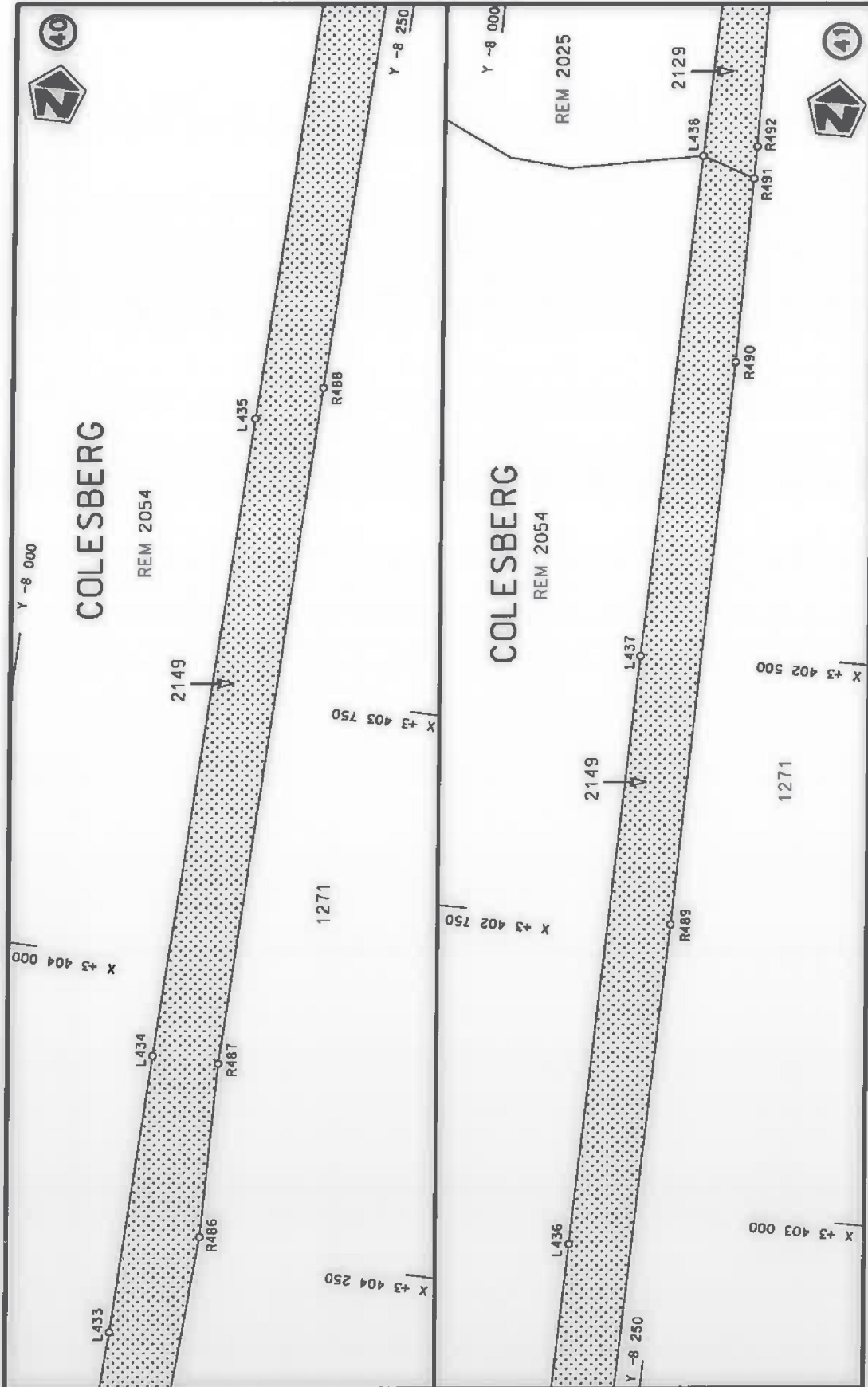
Die Suid Afrikaanse Nasionale Padagientkap MSB Bpk The South African National Roads Agency SOC Ltd	Die figuur getoon The figure shown		steldie padreserwe voor van 'n gedeelte represents the road reserve of a portion van Nasionale Roete N9 of National Route Section 7	
			Vel Sheet 18 of 32	Plan P1065/18



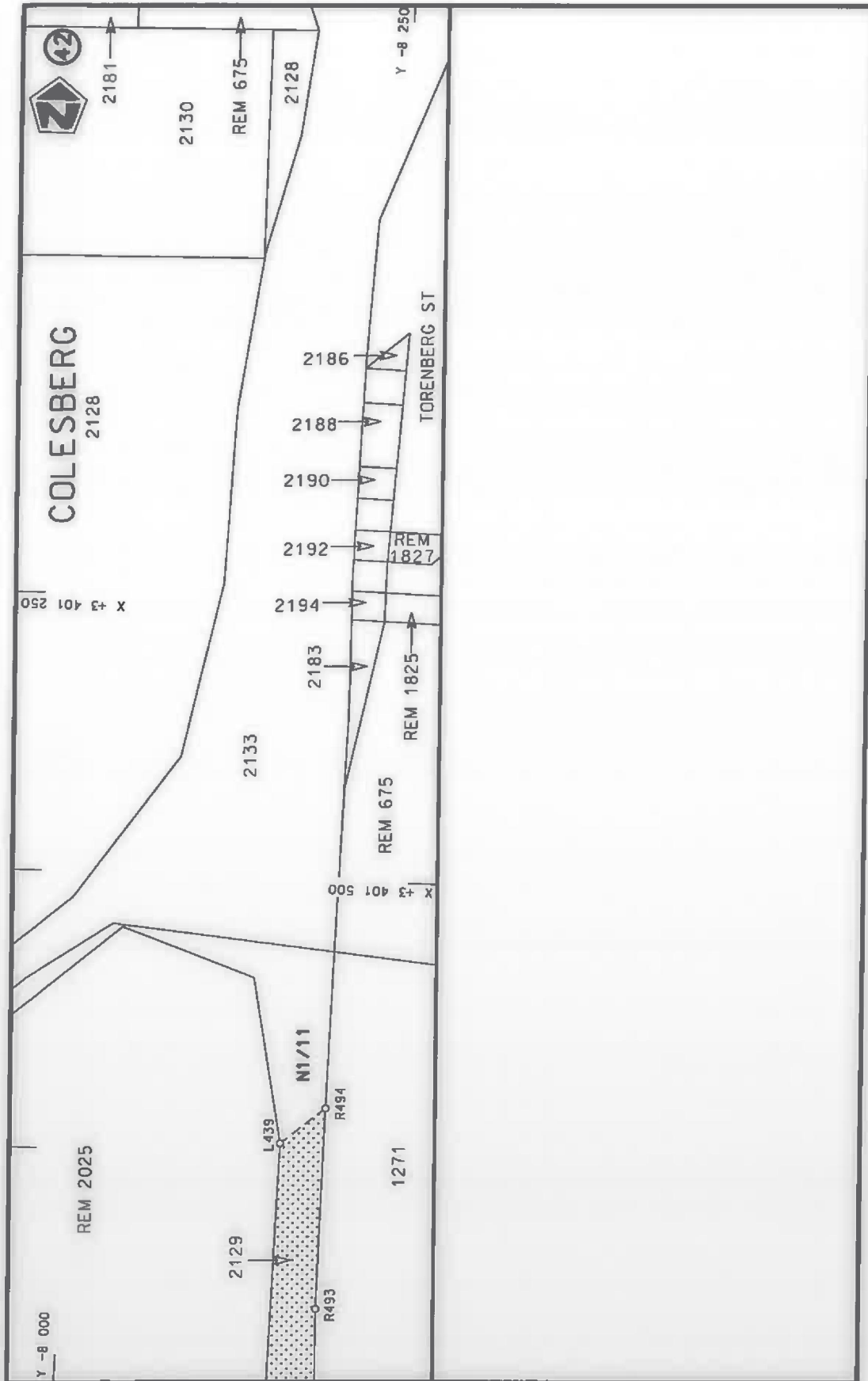
<p>Die Suid Afrikaanse Nasionale Padagentskap MSB Bpk The South African National Roads Agency SOC Ltd</p>	<p>Die figuur getoon The figure shown</p>	<p>steldie padreserwe voor van 'n gedeelte represents the road reserve of a portion van Nasionale Roete N9 of National Route</p>	<p>Vel Sheet 19 of 32 Plan P1065/18</p>
		<p>7</p>	<p>Section</p>



<p>Die Suid Afrikaanse Nasionale Padagentskap MSB Bpk The South African National Roads Agency SOC Ltd</p>	<p>Die figuur getoon The figure shown</p> 	<p>stel die padreserwe voor van 'n gedeelte represents the road reserve of a portion van Nasionale Roete N9 of National Route N9</p> <p>Seksie 7 Section</p>	<p>Vol van van Sheet 20 of 32</p> <p>Plan P1065/18</p>
---	---	--	--



<p>Die Suid Afrikaanse Nasionale Padagentskap MSB Bpk The South African National Roads Agency SOC Ltd</p>	<p>Die figuur getoon The figure shown</p> 	<p>stelt die podreserwe voor van 'n gedeelte represents the road reserve of a portion van Nasionale Roete N9 of National Route</p> <p>Seksie 7 Section</p>	<p>Vel Sheet 21 of 32 Plan P1065/18</p>
---	---	--	---



<p>Die Suid Afrikaanse Nasionale Padagentakap MSB Bpk The South African National Roads Agency SOC Ltd</p>	<p>Die figuur getoon The figure shown</p>	<p>steldie padreserwe voor van 'n gedeelte represents the road reserve of a portion van Nasionale Raete N9 of National Route Seksie N9 Section 7</p>	<p>Vel Sheet 22 of 32 Plan P1065/18</p>
---	---	--	---

PADRESERWE KOÖRDINATE / ROAD RESERVE CO-ORDINATES					
LINKERKANT/LEFT HAND SIDE			REGTERKANT/RIGHT HAND SIDE		
	Y	X	WG 25°	Y	X
L1	-1 696.12	3 488 281.10		R1	-1 932.30 3 488 356.82
L2	-1 710.37	3 488 253.57		R2	-1 894.21 3 488 263.29
L3	-1 747.44	3 488 184.62		R3	-1 870.12 3 488 201.01
L4	-1 798.96	3 488 066.69		R4	-1 849.43 3 488 033.22
L5	-1 836.76	3 487 929.37		R5	-1 846.04 3 488 032.52
L6	-1 898.77	3 487 695.66		R6	-1 870.47 3 487 938.42
L7	-1 948.45	3 487 504.89		R7	-1 927.86 3 487 712.41
L8	-1 990.67	3 487 337.26		R8	-1 970.92 3 487 543.70
L9	-2 046.13	3 487 118.80		R9	-2 021.60 3 487 344.20
L10	-2 083.22	3 486 980.77		R10	-2 087.19 3 487 095.18
L11	-2 098.38	3 486 916.74		R11	-2 130.77 3 486 927.13
L12	-2 105.08	3 486 879.49		R12	-2 143.02 3 486 805.60
L13	-2 109.43	3 486 834.52		R13	-2 136.59 3 486 702.65
L14	-2 109.06	3 486 786.84		R14	-2 127.50 3 486 666.21
L15	-2 105.43	3 486 743.17		R15	-2 086.87 3 486 537.09
L16	-2 099.84	3 486 705.57		R16	-2 031.98 3 486 435.13
L17	-2 069.20	3 486 592.37		R17	-1 873.77 3 486 157.52
L18	-2 023.15	3 486 489.04		R18	-1 809.39 3 486 041.25
L19	-1 913.81	3 486 296.32		R19	-1 705.05 3 485 853.11
L20	-1 787.60	3 486 075.62		R20	-1 693.75 3 485 832.74
L21	-1 769.87	3 486 045.70		R21	-1 629.26 3 485 726.07
L22	-1 669.26	3 485 876.44		R22	-1 613.11 3 485 699.36
L23	-1 657.07	3 485 855.16		R23	-1 584.11 3 485 651.47
L24	-1 596.70	3 485 742.75		R24	-1 534.86 3 485 566.67
L25	-1 582.27	3 485 716.20		R25	-1 457.46 3 485 431.50
L26	-1 573.61	3 485 700.20		R26	-1 216.10 3 485 010.31
L27	-1 543.25	3 485 650.85		R27	-1 153.91 3 484 902.17
L28	-1 491.40	3 485 557.30		R28	-1 123.50 3 484 846.16
L29	-1 471.01	3 485 523.16		R29	-1 096.95 3 484 791.25
L30	-1 413.45	3 485 420.62		R30	-1 072.92 3 484 735.30
L31	-1 395.07	3 485 389.83		R31	-1 051.35 3 484 678.26
L32	-1 046.37	3 484 781.73		R32	-1 032.51 3 484 620.36
L33	-989.36	3 484 682.31		R33	-1 016.21 3 484 561.70
L34	-963.53	3 484 629.21		R34	-1 002.66 3 484 502.38
L35	-943.60	3 484 573.91		R35	-997.28 3 484 472.47
L36	-929.28	3 484 517.12		R36	-1 012.68 3 484 437.98
L37	-868.28	3 484 357.49		R37	-1 003.10 3 484 424.22
L38	-930.51	3 484 025.86		R38	-987.23 3 484 419.57
L39	-981.32	3 483 777.92		R39	-973.11 3 484 279.38
L40	-1 029.29	3 483 540.22		R40	-975.79 3 484 148.35
L41	-1 083.91	3 483 352.12		R41	-991.36 3 484 017.58
L42	-1 160.99	3 483 179.39		R42	-1 046.81 3 483 739.39
L43	-1 247.03	3 483 057.90		R43	-1 034.55 3 483 713.18
L44	-1 339.81	3 482 980.01		R44	-1 084.22 3 483 475.09
L45	-1 531.67	3 482 819.52		R45	-1 145.39 3 483 300.20
L46	-1 562.70	3 482 794.31		R46	-1 200.61 3 483 193.73
L47	-1 610.65	3 482 756.41		R47	-1 301.29 3 483 059.08
L48	-1 651.57	3 482 709.66		R48	-1 372.22 3 483 004.83
L49	-1 728.63	3 482 562.63		R49	-1 566.06 3 482 846.35
L50	-1 763.68	3 482 424.51		R50	-1 672.06 3 482 736.09
L51	-1 803.11	3 482 035.80		R51	-1 745.23 3 482 609.04

Vel Sheet	23	Van of	32	P1065/18
--------------	----	-----------	----	----------

PADRESERWE KOÖRDINATE / ROAD RESERVE CO-ORDINATES						
LINKERKANT/LEFT HAND SIDE				REGTERKANT/RIGHT HAND SIDE		
	Y	X	WG 25°		Y	X
L52	-1 805.84	3 482 006.37		R52	-1 779.24	3 482 488.27
L53	-1 834.03	3 481 726.69		R53	-1 800.84	3 482 370.85
L54	-1 844.66	3 481 459.58		R54	-1 832.71	3 482 040.30
L55	-1 850.49	3 481 445.55		R55	-1 891.13	3 481 470.19
L56	-1 915.12	3 480 915.12		R56	-1 921.60	3 481 172.45
L57	-1 946.26	3 480 602.63		R57	-1 955.57	3 480 840.05
L58	-1 996.83	3 480 094.24		R58	-1 988.57	3 480 508.39
L59	-2 038.35	3 479 675.89		R59	-2 040.44	3 479 982.77
L60	-2 084.64	3 479 208.54		R60	-2 082.61	3 479 553.64
L61	-2 116.01	3 478 892.88		R61	-2 085.79	3 479 522.88
L62	-2 180.80	3 478 458.08		R62	-2 117.26	3 479 200.12
L63	-2 225.42	3 478 158.87		R63	-2 147.06	3 478 899.17
L64	-2 306.20	3 477 617.41		R64	-2 192.07	3 478 597.42
L65	-2 351.09	3 477 317.86		R65	-2 238.61	3 478 284.71
L66	-2 382.10	3 477 109.24		R66	-2 282.97	3 477 987.26
L67	-2 439.41	3 476 723.36		R67	-2 332.52	3 477 654.98
L68	-2 439.45	3 476 723.05		R68	-2 381.48	3 477 326.01
L69	-2 480.48	3 476 444.50		R69	-2 469.65	3 476 733.49
L70	-2 540.69	3 476 033.58		R70	-2 518.37	3 476 405.92
L71	-2 545.31	3 476 001.96		R71	-2 553.75	3 476 168.55
L72	-2 586.67	3 475 722.00		R72	-2 602.68	3 475 837.37
L73	-2 628.01	3 475 445.26		R73	-2 677.27	3 475 336.11
L74	-2 689.27	3 475 033.48		R74	-2 697.16	3 475 195.72
L75	-2 689.58	3 475 031.40		R75	-2 720.27	3 475 041.92
L76	-2 706.50	3 474 922.65		R76	-2 720.55	3 475 040.08
L77	-2 706.73	3 474 921.17		R77	-2 750.39	3 474 841.21
L78	-2 734.63	3 474 741.88		R78	-2 751.28	3 474 836.11
L79	-2 772.48	3 474 560.81		R79	-2 751.54	3 474 834.60
L80	-2 896.79	3 474 086.67		R80	-2 768.88	3 474 734.75
L81	-2 901.28	3 474 069.59		R81	-2 802.38	3 474 573.92
L82	-2 958.59	3 473 851.76		R82	-2 905.69	3 474 178.26
L83	-3 037.36	3 473 552.33		R83	-3 033.20	3 473 693.61
L84	-3 043.54	3 473 528.85		R84	-3 074.96	3 473 535.07
L85	-3 083.51	3 473 406.66		R85	-3 098.11	3 473 465.86
L86	-3 147.96	3 473 240.39		R86	-3 112.48	3 473 424.81
L87	-3 177.39	3 473 176.08		R87	-3 116.49	3 473 414.53
L88	-3 214.90	3 473 093.85		R88	-3 153.12	3 473 349.39
L89	-3 225.90	3 473 008.54		R89	-3 298.39	3 473 136.20
L90	-3 228.68	3 472 918.96		R90	-3 307.52	3 473 122.71
L91	-3 212.87	3 472 824.82		R91	-3 372.28	3 473 027.04
L92	-3 172.79	3 472 739.48		R92	-3 394.28	3 472 939.91
L93	-3 109.95	3 472 668.31		R93	-3 384.16	3 472 850.53
L94	-3 029.80	3 472 616.97		R94	-3 371.21	3 472 803.29
L95	-2 940.06	3 472 585.56		R95	-3 362.52	3 472 771.60
L96	-2 828.84	3 472 569.47		R96	-3 324.73	3 472 701.85
L97	-2 727.51	3 472 546.12		R97	-3 268.39	3 472 641.87
L98	-2 628.94	3 472 513.46		R98	-3 246.86	3 472 627.55
L99	-2 539.41	3 472 474.30		R99	-3 255.41	3 472 616.42
L100	-2 486.30	3 472 445.69		R100	-3 250.80	3 472 611.20
L101	-2 445.18	3 472 417.17		R101	-3 240.90	3 472 623.47
L102	-2 378.79	3 472 366.72		R102	-3 211.41	3 472 603.86

Vel Sheet	24	Van of	32	P1065/18
-----------	----	--------	----	----------

PADRESERWE KOÖRDINATE / ROAD RESERVE CO-ORDINATES						
LINKERKANT/LEFT HAND SIDE				REGTERKANT/RIGHT HAND SIDE		
	Y	X	WG 25°		Y	X
L103	-2 288.90	3 472	280.90	R103	-3 114.83	3 472 577.29
L104	-2 262.48	3 472	251.39	R104	-2 917.14	3 472 547.88
L105	-2 255.10	3 472	243.14	R105	-2 833.81	3 472 536.93
L106	-2 222.90	3 472	207.19	R106	-2 750.33	3 472 519.99
L107	-2 132.11	3 472	072.20	R107	-2 657.63	3 472 489.36
L108	-1 987.44	3 471	803.53	R108	-2 582.67	3 472 457.56
L109	-1 637.30	3 471	194.64	R109	-2 483.40	3 472 398.06
L110	-1 575.07	3 471	086.42	R110	-2 397.37	3 472 339.60
L111	-1 530.19	3 471	017.15	R111	-2 293.24	3 472 232.05
L112	-1 453.49	3 470	909.08	R112	-2 293.15	3 472 231.96
L113	-1 341.19	3 470	794.93	R113	-2 231.41	3 472 150.46
L114	-1 218.31	3 470	701.39	R114	-2 222.88	3 472 136.79
L115	-1 157.96	3 470	662.12	R115	-2 194.07	3 472 097.55
L116	-1 048.62	3 470	603.44	R116	-2 171.61	3 472 050.63
L117	-666.42	3 470	397.44	R117	-2 162.09	3 472 026.11
L118	-426.96	3 470	254.81	R118	-2 153.03	3 472 021.46
L119	-304.93	3 470	174.37	R119	-2 015.03	3 471 782.25
L120	-177.86	3 470	083.96	R120	-1 845.29	3 471 486.69
L121	-53.96	3 469	990.21	R121	-1 672.88	3 471 185.19
L122	30.79	3 469	919.93	R122	-1 609.43	3 471 074.23
L123	57.79	3 469	897.63	R123	-1 490.99	3 470 905.51
L124	57.84	3 469	897.59	R124	-1 344.52	3 470 757.13
L125	64.22	3 469	893.28	R125	-1 234.31	3 470 671.66
L126	122.41	3 469	844.74	R126	-1 153.77	3 470 626.28
L127	333.00	3 469	652.15	R127	-1 131.82	3 470 578.73
L128	650.97	3 469	344.08	R128	-1 092.63	3 470 560.01
L129	1 029.07	3 468	976.77	R129	-1 061.44	3 470 573.99
L130	1 128.26	3 468	880.48	R130	-698.56	3 470 379.35
L131	1 282.90	3 468	730.35	R131	-454.27	3 470 236.01
L132	1 581.28	3 468	439.78	R132	-248.41	3 470 097.02
L133	1 625.86	3 468	485.63	R133	-69.24	3 469 963.40
L134	1 854.96	3 468	306.16	R134	40.99	3 469 876.27
L135	1 788.38	3 468	236.93	R135	263.39	3 469 676.59
L136	1 876.81	3 468	150.69	R136	629.55	3 469 320.90
L137	2 164.65	3 467	870.49	R137	968.41	3 468 991.86
L138	2 439.17	3 467	603.89	R138	1 101.57	3 468 862.39
L139	2 509.23	3 467	535.86	R139	1 507.69	3 468 467.70
L140	2 658.41	3 467	390.98	R140	1 521.85	3 468 453.98
L141	2 644.67	3 467	411.32	R141	1 500.18	3 468 426.41
L142	2 747.07	3 467	311.56	R142	1 561.28	3 468 377.10
L143	2 833.08	3 467	225.89	R143	1 617.44	3 468 343.42
L144	2 969.76	3 467	079.34	R144	1 667.31	3 468 313.51
L145	3 112.78	3 466	911.12	R145	2 049.16	3 467 940.45
L146	3 225.75	3 466	771.98	R146	2 396.08	3 467 602.39
L147	3 233.76	3 466	758.88	R147	2 634.96	3 467 370.02
L148	3 237.32	3 466	754.52	R148	2 843.33	3 467 169.08
L149	3 241.64	3 466	749.21	R149	3 004.18	3 466 993.11
L150	3 433.21	3 466	513.68	R150	3 176.71	3 466 788.49
L151	3 764.75	3 466	105.18	R151	3 222.23	3 466 730.19
L152	3 926.24	3 465	906.67	R152	3 336.19	3 466 584.24
L153	4 113.19	3 465	676.46	R153	3 348.66	3 466 567.98

Vel
Sheet

25

Van
of

32

P1065/18

PADRESERWE KOÖRDINATE / ROAD RESERVE CO-ORDINATES						
LINKERKANT/LEFT HAND SIDE				REGTERKANT/RIGHT HAND SIDE		
	Y	X	WG 25°		Y	X
L154	4 140.11	3 465 643.43		R154	3 544.19	3 466 326.89
L155	4 178.33	3 465 600.00		R155	3 728.71	3 466 099.86
L156	4 205.04	3 465 563.80		R156	3 897.26	3 465 894.33
L157	4 283.66	3 465 467.24		R157	4 017.80	3 465 747.30
L158	4 304.43	3 465 439.96		R158	4 121.17	3 465 618.55
L159	4 352.88	3 465 371.82		R159	4 150.67	3 465 577.88
L160	4 414.40	3 465 271.81		R160	4 188.56	3 465 536.14
L161	4 454.81	3 465 195.43		R161	4 236.20	3 465 475.53
L162	4 502.23	3 465 090.11		R162	4 321.93	3 465 359.66
L163	4 549.66	3 464 955.06		R163	4 400.48	3 465 229.09
L164	4 567.99	3 464 900.68		R164	4 452.45	3 465 121.08
L165	4 590.05	3 464 800.00		R165	4 498.73	3 465 008.63
L166	4 600.45	3 464 702.09		R166	4 548.37	3 464 838.44
L167	4 606.53	3 464 639.58		R167	4 559.55	3 464 775.26
L168	4 598.40	3 464 570.91		R168	4 567.63	3 464 667.21
L169	4 595.50	3 464 483.40		R169	4 564.10	3 464 605.29
L170	4 582.87	3 464 439.77		R170	4 538.36	3 464 509.99
L171	4 578.41	3 464 402.14		R171	4 541.33	3 464 416.85
L172	4 561.07	3 464 255.75		R172	4 521.27	3 464 298.23
L173	4 587.26	3 464 083.51		R173	4 517.85	3 464 190.29
L174	4 587.98	3 464 082.44		R174	4 518.62	3 464 185.62
L175	4 599.72	3 464 065.08		R175	4 518.93	3 464 149.13
L176	4 608.51	3 463 919.34		R176	4 519.08	3 464 122.40
L177	4 613.45	3 463 883.67		R177	4 522.68	3 464 101.50
L178	4 655.20	3 463 785.72		R178	4 525.99	3 464 081.02
L179	4 675.89	3 463 735.89		R179	4 541.66	3 464 025.69
L180	4 689.45	3 463 696.14		R180	4 548.47	3 464 029.43
L181	4 689.50	3 463 695.99		R181	4 557.86	3 464 017.58
L182	4 695.51	3 463 674.55		R182	4 567.27	3 463 985.28
L183	4 708.41	3 463 594.94		R183	4 567.19	3 463 969.07
L184	4 711.16	3 463 528.81		R184	4 580.99	3 463 909.24
L185	4 703.66	3 463 513.45		R185	4 565.09	3 463 905.56
L186	4 700.96	3 463 419.00		R186	4 593.60	3 463 767.13
L187	4 700.44	3 463 400.92		R187	4 612.89	3 463 691.02
L188	4 699.84	3 463 384.55		R188	4 629.51	3 463 622.09
L189	4 646.32	3 463 222.49		R189	4 634.98	3 463 599.40
L190	4 635.29	3 463 114.62		R190	4 658.44	3 463 587.97
L191	4 657.31	3 463 006.58		R191	4 662.47	3 463 527.31
L192	4 718.85	3 462 889.39		R192	4 650.90	3 463 485.89
L193	4 838.97	3 462 809.99		R193	4 643.97	3 463 467.02
L194	5 017.54	3 462 708.25		R194	4 587.63	3 463 437.63
L195	5 103.54	3 462 655.18		R195	4 574.72	3 463 374.33
L196	5 169.09	3 462 606.19		R196	4 519.04	3 463 309.08
L197	5 213.65	3 462 564.00		R197	4 482.85	3 463 228.43
L198	5 256.56	3 462 520.54		R198	4 480.25	3 463 222.62
L199	5 309.73	3 462 461.21		R199	4 469.31	3 463 169.12
L200	5 362.07	3 462 392.08		R200	4 481.86	3 463 060.40
L201	5 395.84	3 462 334.26		R201	4 502.98	3 463 008.85
L202	5 506.58	3 462 119.00		R202	4 540.85	3 462 952.99
L203	5 637.08	3 461 865.04		R203	4 598.57	3 462 902.62
L204	5 647.64	3 461 844.49		R204	4 696.85	3 462 846.41

Vel
Sheet

26

Van
of

32

P1065/18

PADRESERWE KOÖRDINATE / ROAD RESERVE CO-ORDINATES						
LINKERKANT/LEFT HAND SIDE				REGTERKANT/RIGHT HAND SIDE		
	Y	X	WG 25°	Y	X	
L205	5 673.65	3 461 794.26		R205	4 821.14	3 462 778.20
L206	5 771.78	3 461 613.41		R206	4 869.80	3 462 730.87
L207	5 802.11	3 461 535.66		R207	4 914.36	3 462 727.04
L208	5 820.94	3 461 464.57		R208	4 999.72	3 462 680.19
L209	5 830.90	3 461 380.39		R209	5 219.91	3 462 510.49
L210	5 829.93	3 461 297.91		R210	5 271.31	3 462 453.69
L211	5 820.34	3 461 233.60		R211	5 319.67	3 462 390.80
L212	5 816.46	3 461 232.10		R212	5 380.18	3 462 295.22
L213	5 818.36	3 461 221.98		R213	5 440.83	3 462 178.17
L214	5 812.44	3 461 205.36		R214	5 543.32	3 461 979.69
L215	5 790.54	3 461 133.52		R215	5 657.18	3 461 757.72
L216	5 767.06	3 461 078.02		R216	5 736.10	3 461 605.40
L217	5 703.38	3 460 969.94		R217	5 765.68	3 461 530.11
L218	5 692.32	3 460 951.15		R218	5 785.03	3 461 453.15
L219	5 524.83	3 460 671.34		R219	5 793.96	3 461 385.35
L220	5 469.97	3 460 579.16		R220	5 795.04	3 461 308.40
L221	5 359.39	3 460 379.90		R221	5 780.15	3 461 209.02
L222	5 350.85	3 460 323.49		R222	5 735.12	3 461 092.60
L223	5 357.28	3 460 258.64		R223	5 676.80	3 460 992.72
L224	5 389.90	3 460 156.77		R224	5 561.19	3 460 800.97
L225	5 437.04	3 460 119.45		R225	5 543.86	3 460 772.40
L226	5 452.99	3 460 090.56		R226	5 457.85	3 460 629.75
L227	5 534.64	3 460 021.40		R227	5 408.58	3 460 549.88
L228	5 589.07	3 459 980.84		R228	5 354.40	3 460 458.55
L229	5 586.31	3 459 968.57		R229	5 334.97	3 460 427.83
L230	5 587.77	3 459 969.10		R230	5 325.34	3 460 379.98
L231	5 621.13	3 459 917.78		R231	5 314.74	3 460 333.11
L232	5 668.94	3 459 822.86		R232	5 305.64	3 460 335.31
L233	5 670.74	3 459 814.85		R233	5 296.71	3 460 326.70
L234	5 669.99	3 459 811.61		R234	5 313.02	3 460 297.58
L235	5 657.94	3 459 759.52		R235	5 314.84	3 460 289.96
L236	5 658.92	3 459 746.21		R236	5 324.88	3 460 209.85
L237	5 648.51	3 459 614.42		R237	5 363.63	3 460 109.00
L238	5 640.98	3 459 519.31		R238	5 373.86	3 460 094.86
L239	5 636.97	3 459 486.50		R239	5 387.80	3 460 075.61
L240	5 626.41	3 459 398.82		R240	5 411.97	3 460 066.98
L241	5 621.98	3 459 344.23		R241	5 426.27	3 460 056.57
L242	5 621.03	3 459 312.91		R242	5 445.63	3 460 039.12
L243	5 619.98	3 459 275.77		R243	5 509.84	3 459 985.52
L244	5 619.02	3 459 244.38		R244	5 546.12	3 459 955.24
L245	5 588.00	3 458 910.78		R245	5 563.50	3 459 935.81
L246	5 592.71	3 458 845.19		R246	5 568.45	3 459 927.43
L247	5 591.50	3 458 830.24		R247	5 586.22	3 459 878.72
L248	5 577.27	3 458 781.23		R248	5 592.08	3 459 858.06
L249	5 568.25	3 458 683.86		R249	5 599.63	3 459 835.33
L250	5 534.49	3 458 268.04		R250	5 602.52	3 459 797.66
L251	5 487.60	3 458 078.20		R251	5 610.30	3 459 743.63
L252	5 473.12	3 458 017.32		R252	5 614.20	3 459 657.34
L253	5 389.48	3 457 683.82		R253	5 613.77	3 459 631.15
L254	5 291.29	3 457 294.72		R254	5 578.76	3 459 203.80
L255	5 262.38	3 457 179.43		R255	5 538.83	3 458 703.34

Vel Sheet 27 Van of 32

P1065/18

PADRESERWE KOÖRDINATE / ROAD RESERVE CO-ORDINATES					
LINKERKANT/LEFT HAND SIDE			REGTERKANT/RIGHT HAND SIDE		
	Y	X	WG 25°	Y	X
L256	5 193.04	3 457 091.66	R256	5 530.96	3 458 644.18
L257	5 014.45	3 456 381.87	R257	5 519.64	3 458 578.04
L258	4 975.11	3 456 383.54	R258	5 497.91	3 458 483.72
L259	4 949.01	3 456 318.77	R259	5 415.03	3 458 172.07
L260	4 984.21	3 455 796.53	R260	5 301.91	3 457 749.20
L261	4 838.06	3 455 636.73	R261	5 183.93	3 457 307.54
L262	4 774.39	3 455 543.53	R262	5 069.71	3 456 879.58
L263	4 754.52	3 455 505.30	R263	4 967.35	3 456 497.72
L264	4 717.27	3 455 402.86	R264	4 943.03	3 456 406.99
L265	4 558.37	3 454 946.22	R265	4 889.99	3 456 209.12
L266	4 433.63	3 454 598.76	R266	4 771.01	3 455 764.39
L267	4 346.24	3 454 346.72	R267	4 656.64	3 455 339.23
L268	4 238.55	3 454 037.80	R268	4 650.89	3 455 321.08
L269	4 140.17	3 453 754.58	R269	4 606.57	3 455 196.02
L270	4 083.89	3 453 591.27	R270	4 527.87	3 455 007.88
L271	3 940.30	3 453 178.89	R271	4 522.23	3 454 995.27
L272	3 932.60	3 453 158.38	R272	4 476.72	3 454 829.24
L273	3 906.86	3 453 071.50	R273	4 468.49	3 454 793.73
L274	3 892.17	3 453 036.74	R274	3 913.41	3 453 196.78
L275	3 886.00	3 453 022.15	R275	3 866.25	3 453 083.11
L276	3 782.93	3 452 721.13	R276	3 856.57	3 453 059.32
L277	3 743.27	3 452 605.29	R277	3 850.17	3 453 022.51
L278	3 714.89	3 452 522.39	R278	3 839.96	3 452 983.82
L279	3 710.05	3 452 497.61	R279	3 772.04	3 452 785.35
L280	3 704.90	3 452 483.61	R280	3 756.27	3 452 753.38
L281	3 695.78	3 452 466.58	R281	3 671.77	3 452 509.49
L282	3 620.97	3 452 248.08	R282	3 651.07	3 452 431.83
L283	3 606.13	3 452 196.58	R283	3 591.25	3 452 259.00
L284	3 583.99	3 452 144.99	R284	3 586.02	3 452 239.72
L285	3 555.95	3 452 018.84	R285	3 564.98	3 452 187.92
L286	3 550.40	3 452 008.65	R286	3 529.52	3 452 046.88
L287	3 520.13	3 451 804.99	R287	3 487.05	3 451 832.00
L288	3 517.93	3 451 779.30	R288	3 485.04	3 451 807.52
L289	3 509.06	3 451 676.04	R289	3 474.52	3 451 684.53
L290	3 508.94	3 451 674.02	R290	3 469.16	3 451 680.78
L291	3 507.21	3 451 646.03	R291	3 466.53	3 451 665.57
L292	3 509.20	3 451 361.68	R292	3 476.73	3 451 662.68
L293	3 511.55	3 451 215.24	R293	3 476.07	3 451 490.58
L294	3 517.59	3 450 682.84	R294	3 478.69	3 451 198.32
L295	3 519.09	3 450 339.07	R295	3 484.66	3 450 671.46
L296	3 519.58	3 450 288.33	R296	3 486.32	3 450 490.31
L297	3 520.32	3 450 209.45	R297	3 484.58	3 450 454.25
L298	3 524.21	3 450 186.50	R298	3 480.07	3 450 424.19
L299	3 524.26	3 450 171.23	R299	3 480.59	3 450 408.26
L300	3 520.91	3 450 148.29	R300	3 485.70	3 450 378.31
L301	3 522.51	3 449 978.93	R301	3 486.36	3 450 318.66
L302	3 534.78	3 448 811.71	R302	3 480.95	3 450 317.23
L303	3 538.88	3 448 474.38	R303	3 475.95	3 450 317.21
L304	3 552.52	3 447 123.52	R304	3 462.99	3 450 311.01
L305	3 568.31	3 446 907.22	R305	3 455.33	3 450 299.45
L306	3 602.74	3 446 707.53	R306	3 454.38	3 450 281.90

Vel Sheet 28 Van of 32

P1065/18

PADRESERWE KOÖRDINATE / ROAD RESERVE CO-ORDINATES						
LINKERKANT/LEFT HAND SIDE				REGTERKANT/RIGHT HAND SIDE		
	Y	X	WG 25°		Y	X
L307	3 626.63	3 446	623.30	R307	3 454.58	3 450 265.92
L308	3 819.40	3 446	069.37	R308	3 450.33	3 450 251.47
L309	3 865.34	3 445	901.95	R309	3 430.63	3 450 223.40
L310	3 872.05	3 445	842.07	R310	3 487.23	3 450 264.73
L311	3 890.70	3 445	738.29	R311	3 488.37	3 450 167.63
L312	3 926.11	3 445	519.71	R312	3 489.88	3 450 122.53
L313	4 077.61	3 444	568.58	R313	3 507.23	3 448 454.07
L314	4 364.74	3 442	773.85	R314	3 514.13	3 447 820.39
L315	4 389.29	3 442	586.49	R315	3 503.01	3 447 770.10
L316	4 404.26	3 442	342.60	R316	3 503.34	3 447 740.16
L317	4 398.41	3 442	084.15	R317	3 515.51	3 447 691.41
L318	4 384.16	3 441	916.60	R318	3 521.48	3 447 131.44
L319	4 349.15	3 441	703.32	R319	3 528.86	3 446 943.81
L320	4 284.20	3 441	440.48	R320	3 566.79	3 446 721.34
L321	4 225.03	3 441	262.27	R321	3 621.21	3 446 530.13
L322	4 133.76	3 441	040.94	R322	3 700.31	3 446 307.25
L323	4 071.68	3 440	909.84	R323	3 720.78	3 446 253.68
L324	3 866.37	3 440	475.43	R324	3 696.19	3 446 233.46
L325	3 759.85	3 440	250.25	R325	3 730.08	3 446 140.59
L326	3 614.59	3 439	943.19	R326	3 748.43	3 446 139.43
L327	3 537.64	3 439	775.78	R327	3 781.20	3 446 086.88
L328	3 479.40	3 439	606.71	R328	3 827.92	3 445 911.81
L329	3 435.08	3 439	372.54	R329	3 860.53	3 445 732.05
L330	3 425.29	3 439	163.56	R330	4 040.38	3 444 603.74
L331	3 429.17	3 438	941.18	R331	4 040.39	3 444 603.70
L332	3 423.73	3 438	726.11	R332	4 333.77	3 442 768.95
L333	3 419.00	3 438	600.82	R333	4 358.26	3 442 582.08
L334	3 388.43	3 438	399.02	R334	4 372.81	3 442 341.97
L335	3 345.54	3 438	274.00	R335	4 372.21	3 442 342.81
L336	3 310.62	3 438	192.81	R336	4 365.79	3 442 104.23
L337	3 305.98	3 438	180.53	R337	4 351.84	3 441 946.21
L338	3 302.77	3 438	174.52	R338	4 313.67	3 441 707.89
L339	3 260.48	3 438	085.48	R339	4 272.45	3 441 546.30
L340	3 235.51	3 438	055.67	R340	4 257.13	3 441 495.91
L341	3 226.89	3 438	042.28	R341	4 244.77	3 441 452.07
L342	3 156.80	3 437	933.50	R342	4 189.73	3 441 272.24
L343	2 648.11	3 437	168.82	R343	4 176.71	3 441 227.78
L344	2 468.41	3 436	885.19	R344	4 125.30	3 441 104.07
L345	2 310.63	3 436	604.57	R345	4 094.84	3 441 041.58
L346	2 137.10	3 436	245.67	R346	4 031.65	3 440 905.45
L347	2 024.51	3 435	972.72	R347	3 903.62	3 440 633.77
L348	1 983.94	3 435	864.63	R348	3 833.37	3 440 479.43
L349	1 974.06	3 435	815.17	R349	3 729.91	3 440 260.56
L350	1 964.01	3 435	786.90	R350	3 675.91	3 440 147.06
L351	1 939.99	3 435	742.24	R351	3 608.61	3 440 007.70
L352	1 593.63	3 434	759.13	R352	3 555.93	3 439 899.64
L353	1 234.95	3 433	743.20	R353	3 505.76	3 439 785.46
L354	1 212.79	3 433	680.43	R354	3 459.84	3 439 650.47
L355	1 016.05	3 433	121.64	R355	3 430.75	3 439 552.62
L356	725.82	3 432	299.83	R356	3 405.88	3 439 400.00
L357	609.21	3 431	969.34	R357	3 395.23	3 439 295.34

Vel Sheet 29 Van of 32

P1065/18

PADRESERWE KOÖRDINATE / ROAD RESERVE CO-ORDINATES					
LINKERKANT/LEFT HAND SIDE			REGTERKANT/RIGHT HAND SIDE		
	Y	X	WG 25°	Y	X
L358	515.51	3 431	703.99	R358	3 389.64 3 439 171.60
L359	448.56	3 431	517.26	R359	3 394.20 3 439 162.37
L360	389.60	3 431	375.66	R360	3 394.03 3 439 116.40
L361	305.87	3 431	206.20	R361	3 391.06 3 439 113.98
L362	260.48	3 431	129.72	R362	3 391.25 3 439 033.93
L363	-194.33	3 430	368.53	R363	3 390.76 3 438 827.21
L364	-893.29	3 429	197.06	R364	3 385.15 3 438 606.00
L365	-1 430.96	3 428	295.07	R365	3 374.54 3 438 534.73
L366	-1 726.63	3 427	799.06	R366	3 363.41 3 438 457.95
L367	-2 555.42	3 426	408.90	R367	3 336.25 3 438 351.20
L368	-2 775.24	3 426	036.78	R368	3 334.29 3 438 339.40
L369	-2 853.71	3 425	886.65	R369	3 297.80 3 438 245.41
L370	-2 934.28	3 425	705.85	R370	3 254.60 3 438 154.61
L371	-2 994.47	3 425	549.25	R371	3 212.13 3 438 080.10
L372	-3 050.32	3 425	372.32	R372	3 196.98 3 438 054.42
L373	-3 036.42	3 425	282.38	R373	3 157.93 3 437 995.44
L374	-3 015.94	3 425	246.76	R374	2 604.84 3 437 162.24
L375	-3 066.36	3 425	237.50	R375	2 550.41 3 437 079.22
L376	-3 089.72	3 425	221.60	R376	2 496.83 3 436 994.70
L377	-3 097.35	3 425	216.40	R377	2 443.82 3 436 908.05
L378	-3 164.47	3 424	994.25	R378	2 392.66 3 436 820.95
L379	-3 251.07	3 424	707.63	R379	2 343.49 3 436 733.86
L380	-3 253.50	3 424	657.66	R380	2 296.27 3 436 646.99
L381	-3 257.40	3 424	644.39	R381	2 249.01 3 436 556.43
L382	-3 283.28	3 424	601.04	R382	2 181.21 3 436 418.98
L383	-3 457.16	3 424	025.52	R383	2 119.57 3 436 286.44
L384	-4 318.39	3 421	172.65	R384	2 040.73 3 436 102.67
L385	-4 340.00	3 421	090.21	R385	2 003.32 3 436 008.99
L386	-4 360.68	3 421	008.13	R386	1 967.71 3 435 915.39
L387	-4 429.15	3 420	801.84	R387	1 953.68 3 435 875.39
L388	-4 459.99	3 420	703.48	R388	1 926.86 3 435 831.85
L389	-4 559.31	3 420	374.33	R389	1 916.87 3 435 803.55
L390	-4 595.10	3 420	255.74	R390	1 910.62 3 435 753.00
L391	-4 726.07	3 419	820.73	R391	1 762.36 3 435 332.36
L392	-4 810.80	3 419	541.39	R392	1 555.52 3 434 745.69
L393	-4 980.72	3 418	978.58	R393	1 345.98 3 434 151.36
L394	-5 043.53	3 418	745.25	R394	1 227.50 3 433 816.08
L395	-5 199.90	3 418	153.60	R395	1 084.93 3 433 410.84
L396	-5 276.62	3 417	861.68	R396	869.32 3 432 801.15
L397	-5 301.04	3 417	768.81	R397	736.62 3 432 424.66
L398	-5 316.16	3 417	720.96	R398	734.54 3 432 418.89
L399	-5 356.11	3 417	602.33	R399	630.45 3 432 132.65
L400	-5 396.10	3 417	483.56	R400	529.14 3 431 849.81
L401	-5 581.56	3 416	934.41	R401	465.48 3 431 660.49
L402	-5 745.99	3 416	447.08	R402	428.93 3 431 561.71
L403	-5 953.83	3 415	832.01	R403	357.20 3 431 383.20
L404	-5 961.30	3 415	739.95	R404	272.34 3 431 215.63
L405	-5 965.61	3 415	727.21	R405	216.23 3 431 119.58
L406	-6 015.49	3 415	649.54	R406	171.43 3 431 041.59
L407	-6 320.21	3 414	747.78	R407	166.82 3 431 033.46
L408	-6 628.02	3 413	838.82	R408	-392.54 3 430 096.91

Vel Sheet	30	Van of	32
-----------	----	--------	----

P1065/18

PADRESERWE KOÖRDINATE / ROAD RESERVE CO-ORDINATES					
LINKERKANT/LEFT HAND SIDE			REGTERKANT/RIGHT HAND SIDE		
	Y	X	WG 25°	Y	X
L409	-6 672.81	3 413 666.92	R409	-477.72	3 429 954.30
L410	-6 686.65	3 413 520.68	R410	-534.06	3 429 859.96
L411	-6 770.46	3 413 229.10	R411	-1 458.79	3 428 309.36
L412	-6 954.29	3 412 406.57	R412	-1 469.57	3 428 291.28
L413	-7 117.93	3 411 672.07	R413	-2 666.04	3 426 284.73
L414	-7 154.05	3 411 511.65	R414	-2 807.18	3 426 044.21
L415	-7 202.57	3 411 279.12	R415	-2 874.60	3 425 916.95
L416	-7 215.19	3 411 208.43	R416	-2 961.08	3 425 723.12
L417	-7 237.79	3 411 082.84	R417	-3 026.02	3 425 552.50
L418	-7 243.02	3 411 048.19	R418	-3 083.98	3 425 369.49
L419	-7 241.40	3 410 992.99	R419	-3 140.62	3 425 315.00
L420	-7 264.49	3 410 844.81	R420	-3 171.09	3 425 081.36
L421	-7 281.49	3 410 793.25	R421	-3 267.56	3 424 760.23
L422	-7 330.86	3 410 466.05	R422	-3 487.72	3 424 031.66
L423	-7 407.11	3 409 957.24	R423	-3 931.27	3 422 562.09
L424	-7 566.86	3 408 894.54	R424	-3 969.39	3 422 521.30
L425	-7 664.17	3 408 244.10	R425	-4 013.01	3 422 377.78
L426	-7 762.81	3 407 586.60	R426	-4 003.53	3 422 322.69
L427	-7 928.09	3 406 487.90	R427	-4 347.90	3 421 181.72
L428	-8 059.02	3 405 619.57	R428	-4 405.44	3 421 015.78
L429	-8 110.79	3 405 275.24	R429	-4 435.50	3 420 918.48
L430	-8 132.56	3 405 132.05	R430	-4 511.21	3 420 645.35
L431	-8 148.58	3 404 963.78	R431	-4 573.32	3 420 440.45
L432	-8 158.16	3 404 614.04	R432	-4 591.83	3 420 379.32
L433	-8 165.38	3 404 334.29	R433	-4 644.78	3 420 204.46
L434	-8 167.18	3 404 084.25	R434	-4 907.74	3 419 332.86
L435	-8 171.61	3 403 508.03	R435	-4 931.33	3 419 293.32
L436	-8 175.57	3 403 041.18	R436	-4 935.23	3 419 280.45
L437	-8 179.56	3 402 511.10	R437	-4 937.45	3 419 234.98
L438	-8 183.79	3 402 061.15	R438	-4 958.93	3 419 163.18
L439	-8 186.32	3 401 738.52	R439	-5 021.12	3 418 952.73
			R440	-5 055.48	3 418 823.84
			R441	-5 094.29	3 418 765.94
			R442	-5 135.99	3 418 516.99
			R443	-5 337.16	3 417 756.49
			R444	-5 430.63	3 417 481.19
			R445	-5 613.07	3 416 939.81
			R446	-5 870.78	3 416 176.39
			R447	-6 385.96	3 414 651.15
			R448	-6 662.10	3 413 833.93
			R449	-6 709.46	3 413 723.52
			R450	-6 774.91	3 413 623.34
			R451	-6 743.36	3 413 586.65
			R452	-6 806.25	3 413 305.87
			R453	-6 853.48	3 413 092.72
			R454	-6 869.04	3 413 022.50
			R455	-6 927.37	3 412 764.52
			R456	-6 995.65	3 412 454.73
			R457	-7 013.48	3 412 379.77
			R458	-7 051.02	3 412 235.82
			R459	-7 077.95	3 412 089.72

Vel Sheet	31	Van of	32	P1065/18
-----------	----	--------	----	----------

PADRESERWE KOÖRDINATE / ROAD RESERVE CO-ORDINATES				
LINKERKANT/LEFT HAND SIDE			REGTERKANT/RIGHT HAND SIDE	
Y	X	WG 25°	Y	X
			R460	-7 144.99 3 411 785.37
			R461	-7 173.10 3 411 676.46
			R462	-7 209.13 3 411 513.68
			R463	-7 259.10 3 411 253.03
			R464	-7 307.29 3 410 974.44
			R465	-7 334.69 3 410 787.82
			R466	-7 365.64 3 410 582.30
			R467	-7 393.24 3 410 404.43
			R468	-7 458.97 3 409 966.57
			R469	-7 532.06 3 409 474.11
			R470	-7 611.59 3 408 942.97
			R471	-7 660.44 3 408 621.28
			R472	-7 763.66 3 407 935.79
			R473	-7 858.90 3 407 300.80
			R474	-7 939.83 3 406 765.72
			R475	-7 996.73 3 406 382.84
			R476	-8 019.30 3 406 328.60
			R477	-8 021.31 3 406 315.30
			R478	-8 015.60 3 406 255.83
			R479	-8 024.85 3 406 193.59
			R480	-8 112.62 3 405 629.11
			R481	-8 160.85 3 405 286.79
			R482	-8 172.66 3 405 200.36
			R483	-8 196.84 3 404 979.73
			R484	-8 201.02 3 404 940.82
			R485	-8 213.22 3 404 700.51
			R486	-8 229.62 3 404 239.78
			R487	-8 223.32 3 404 083.90
			R488	-8 224.93 3 403 473.25
			R489	-8 231.49 3 402 747.55
			R490	-8 231.84 3 402 241.45
			R491	-8 229.31 3 402 076.72
			R492	-8 228.87 3 402 048.27
			R493	-8 223.82 3 401 886.48
			R494	-8 223.72 3 401 705.37

Vel Sheet	32	Van of	32	P1065/18
-----------	----	--------	----	----------