

## DEPARTMENT OF TRANSPORT

NO. 417

15 MARCH 2019

**THE SOUTH AFRICAN NATIONAL ROADS  
AGENCY SOC LIMITED**

Registration No: 1998/009584/30

**DECLARATION AMENDMENT OF NATIONAL ROAD N10 SECTION 3**

AMENDMENT OF DECLARATION No. 727 OF 2006.

By virtue of Section 40 (1)(b) of The South African National Roads Agency Limited and National Roads Act, 1998 (Act No. 7 of 1998), I hereby amend Declaration No. 727 of 2006 by substituting it in its entirety, with the accompanying sheets 1 to 29 of Plan No. P1047/18.

In the town of Cradock the N10 Section 3 enters the town from the West and follows the streets known as Main Street, Hospital Street, Voortrekker Street and Stockensstom Street at the time of declaration.

**(National Road N10 Section 3: Great Fish River – Cradock)****MINISTER OF TRANSPORT**

## DEPARTEMENT VAN VERVOER

NO. 417

15 MAART 2019

**DIE SUID-AFRIKAANSE NASIONALE  
PADAGENTSKAP MSB BEPERK**

Registrasie No: 1998/009584/30

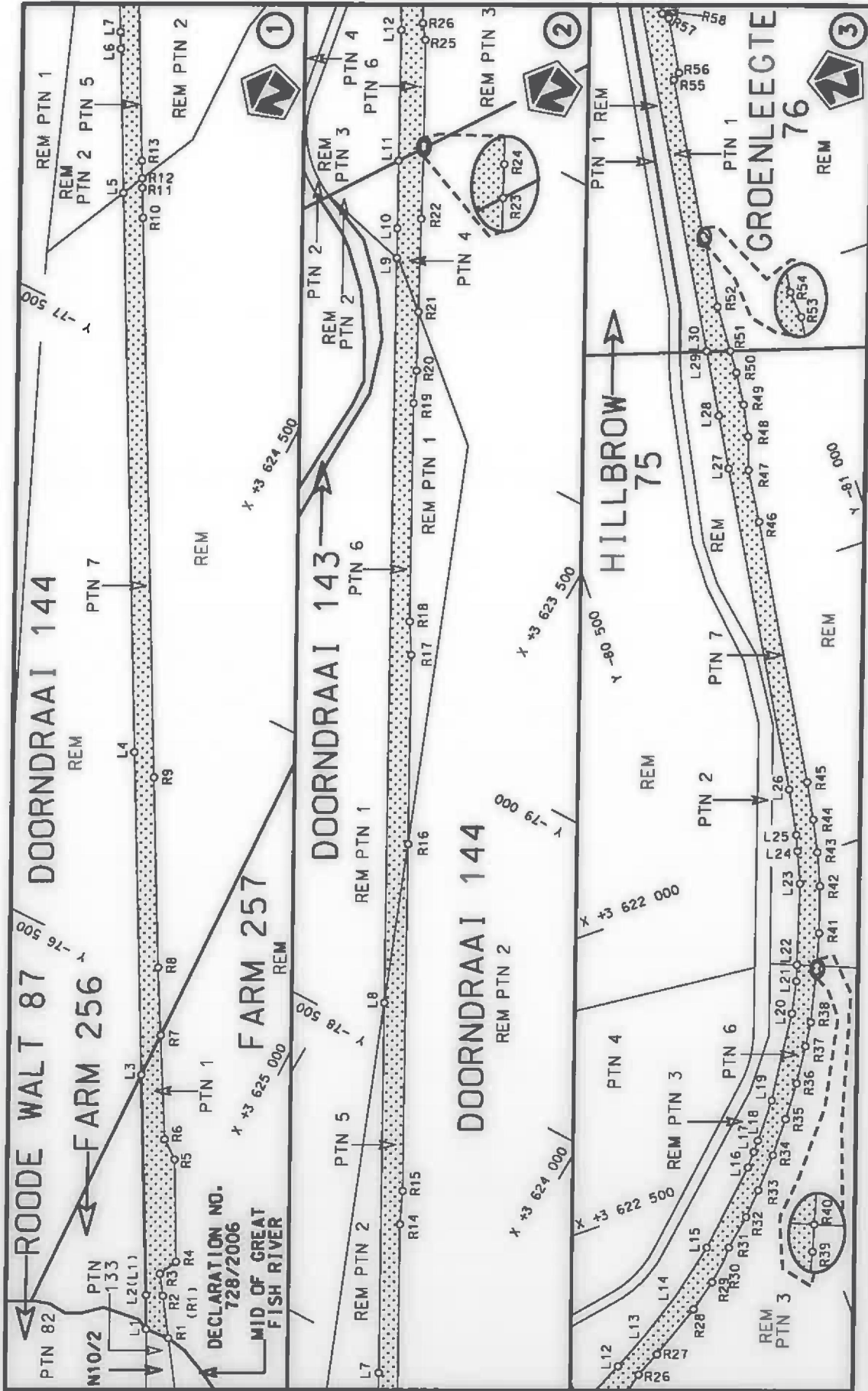
**VERKLARING WYSIGING VAN NASIONALE PAD N10 SEKSIE 3**

WYSIGING VAN VERKLARING No. 727 VAN 2006.

Kragtens Artikel 40(1)(b) van die Wet op die Suid-Afrikaanse Nasionale Padagentskap Beperk en op Nasionale Paaie, 1998 (Wet No. 7 van 1998), wysig ek hiermee Verklaring No. 727 van 2006 deur dit in sy geheel te vervang, met bygaande velle 1 tot 29 van Plan No. P1047/18.

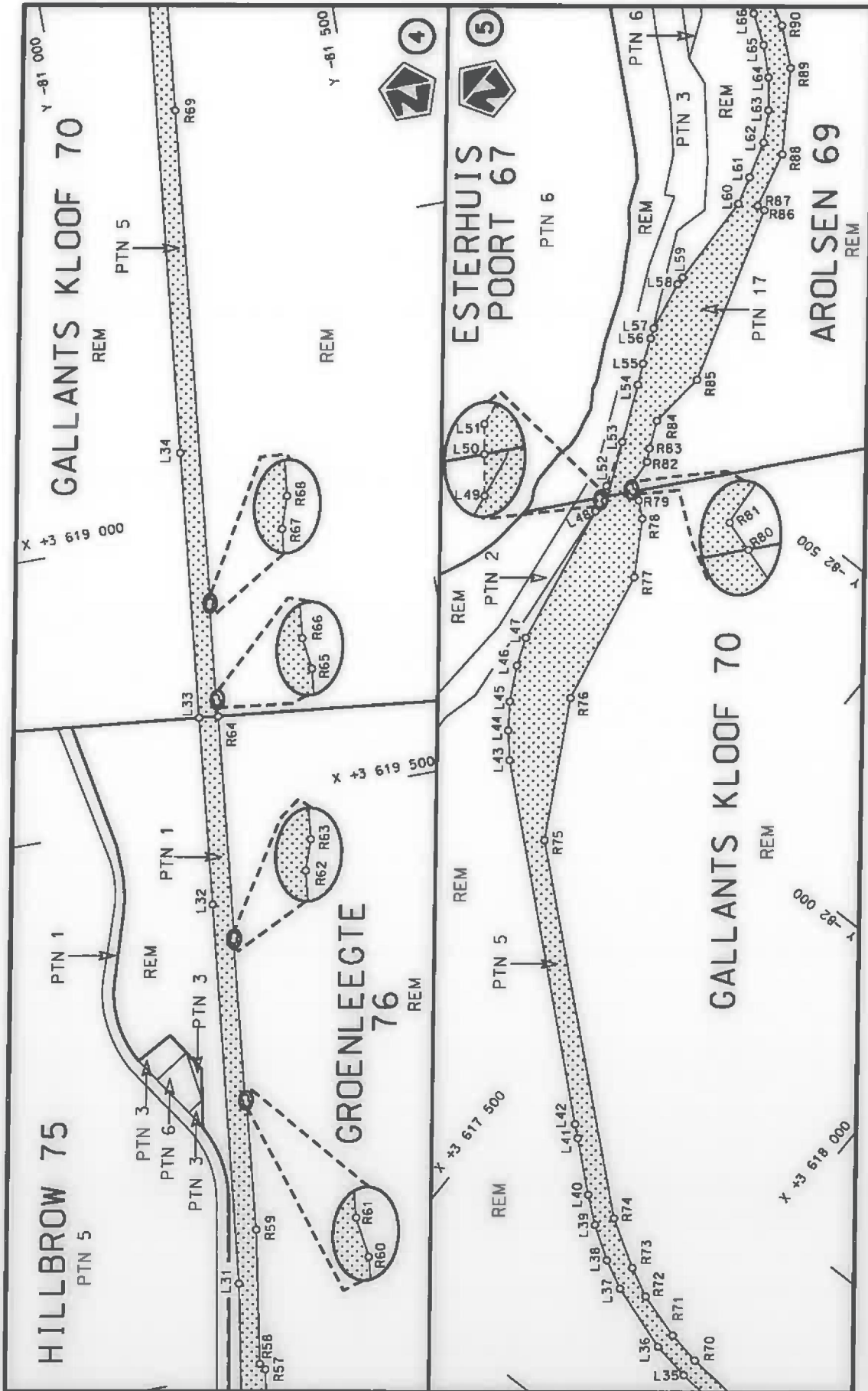
In die dorp Cradock kom die N10 Seksie 3 die dorp binne van uit die Weste en volg die strate bekend as Mainstraat, Hospitalstraat, Voortrekkerstraat and Stockensstomstraat tydens datum van verklaring.

**(Nasionale Pad N10 Seksie 3: Groot Vis Rivier – Cradock)**  
MINISTER VAN VERVOER

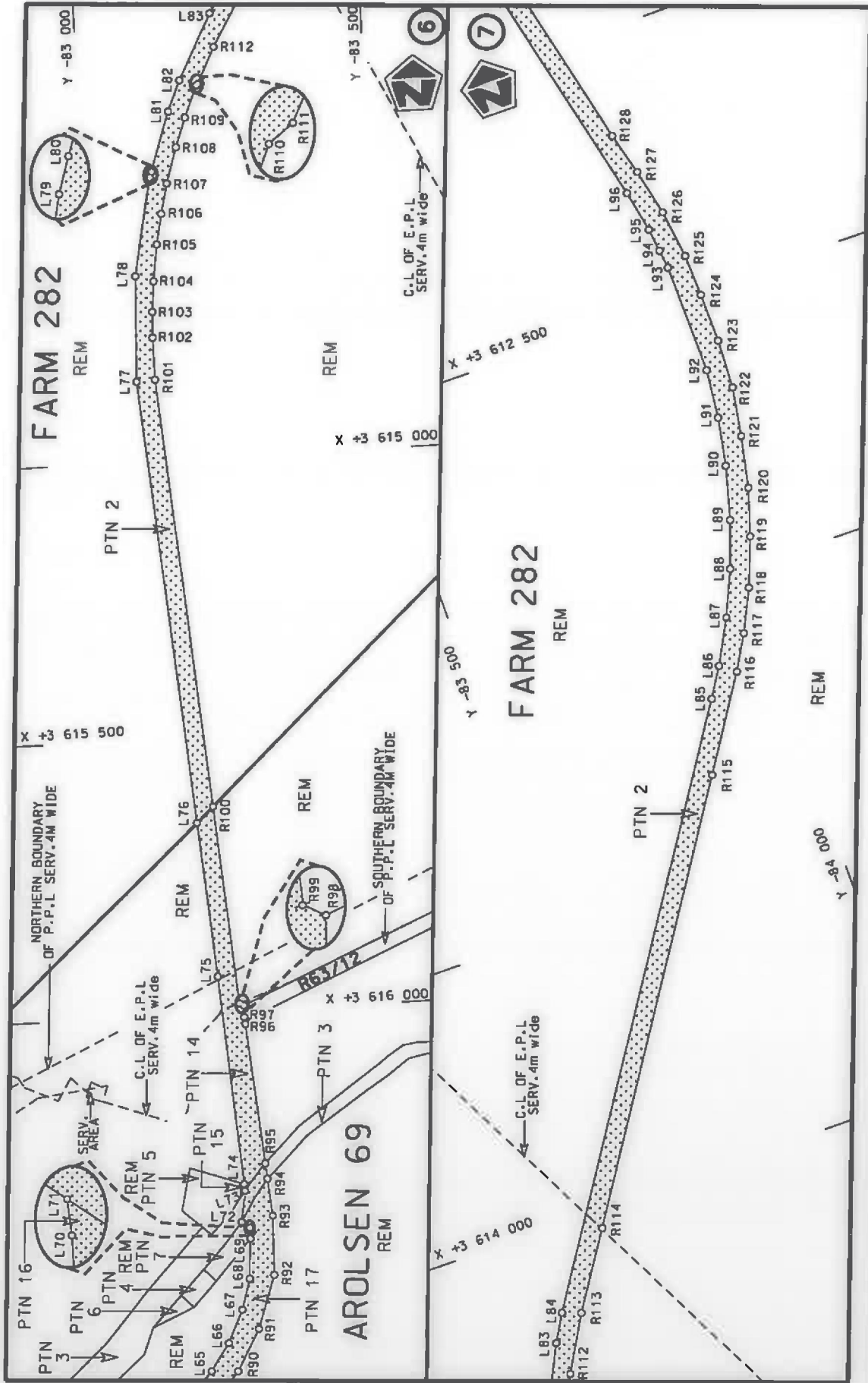


DECLARATION NO.  
728/2006  
MID OF GREAT  
FISH RIVER

Die Suid Afrikaanse Nasionale Padagentskap MSB Bpk The South African National Roads Agency SOC Ltd	Die figuur getoon The figure shown	steldie padreserwe voor van 'n gedeelte represents the road reserve of a portion van Nasionale Roete N10 of National Route	Vel Sheet 1 of 29 Plan P1047/18
---	---------------------------------------	---	---------------------------------------

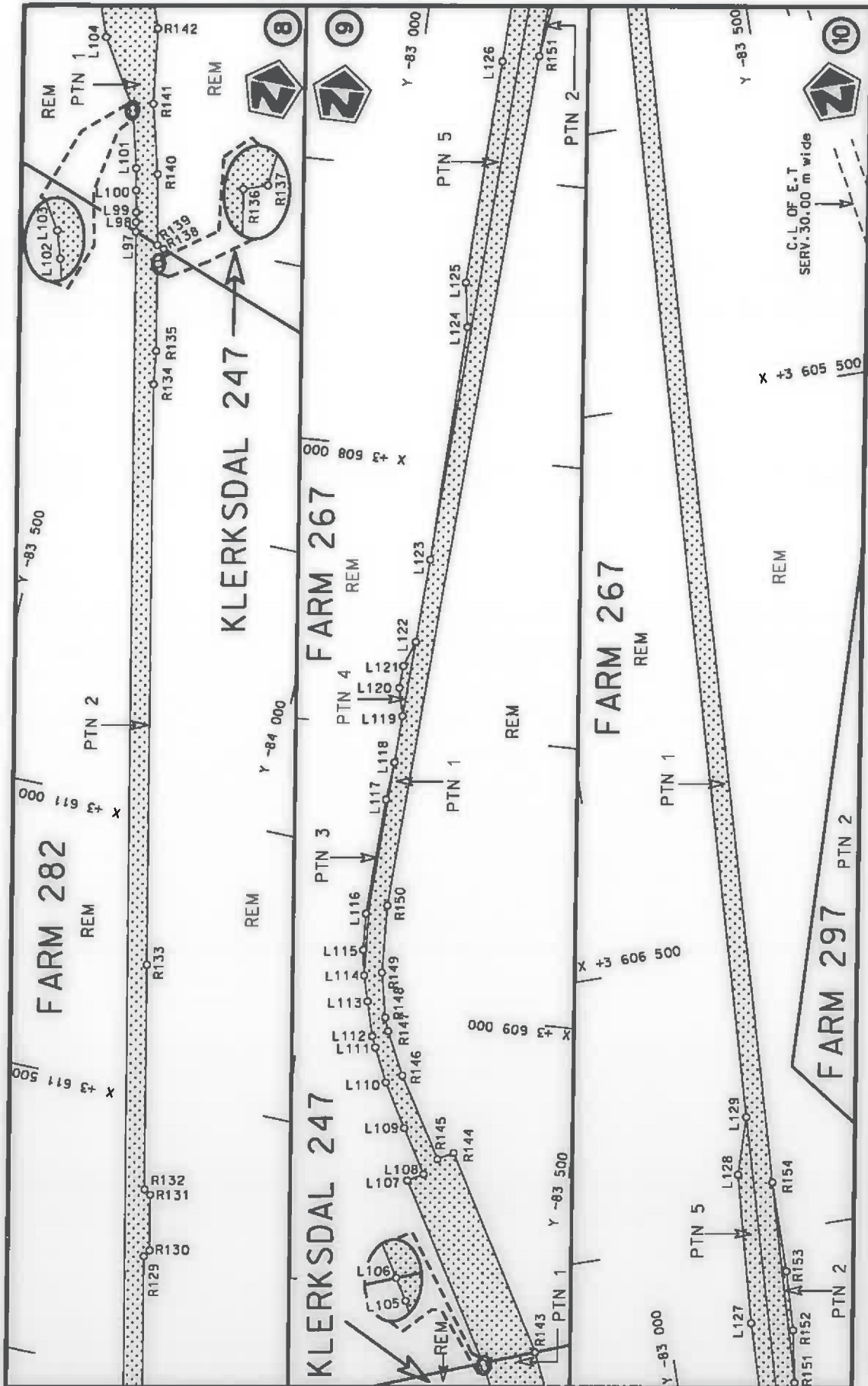


<p>Die Suid Afrikaanse Nasionale Padagentskap MSB Bpk The South African National Roads Agency SOC Ltd</p>	<p>Die figuur getoon The figure shown</p>	<p>stelt die padreserwe voor van 'n gedeelte represents the road reserve of a portion van Nasionale Roete N10 of National Route</p>	<p>Vel Sheet 2 of 29 Plan P1047/18</p>
---	---	---	--

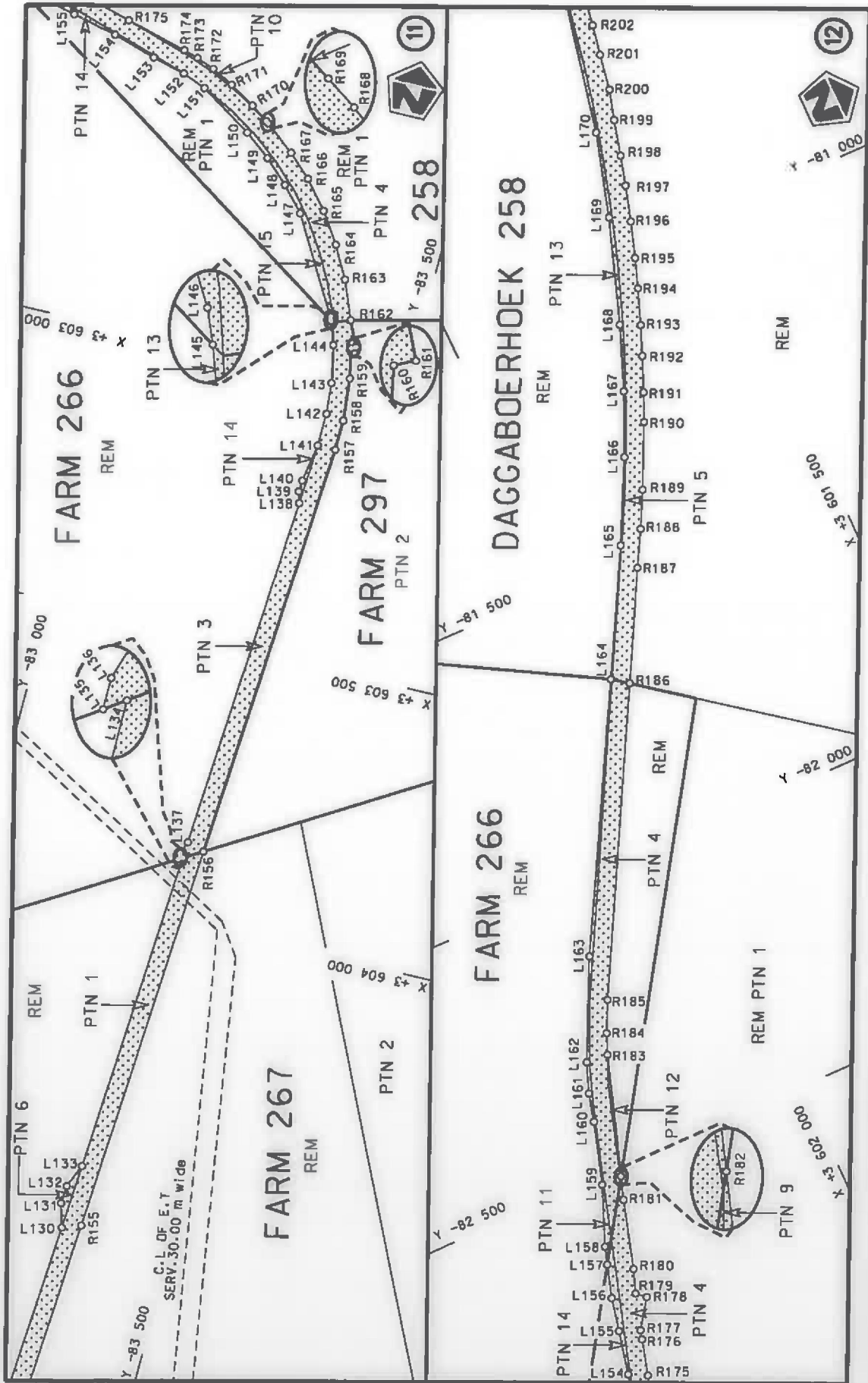



<p>Die Suid Afrikaanse Nasionale Padagentskap MSB Bpk The South African National Roads Agency SOC Ltd</p>	<p>Die figuur getoon The figure shown</p>	<p>steldie padreserwe voor van 'n gedeelte represents the road reserve of a portion van Nasionale Roete N10 of National Route</p>	<p>Vel Sheet 3 of 29 Plan P1047/18</p>
<p>3</p>		<p>Seksie Section</p>	<p>N10</p>

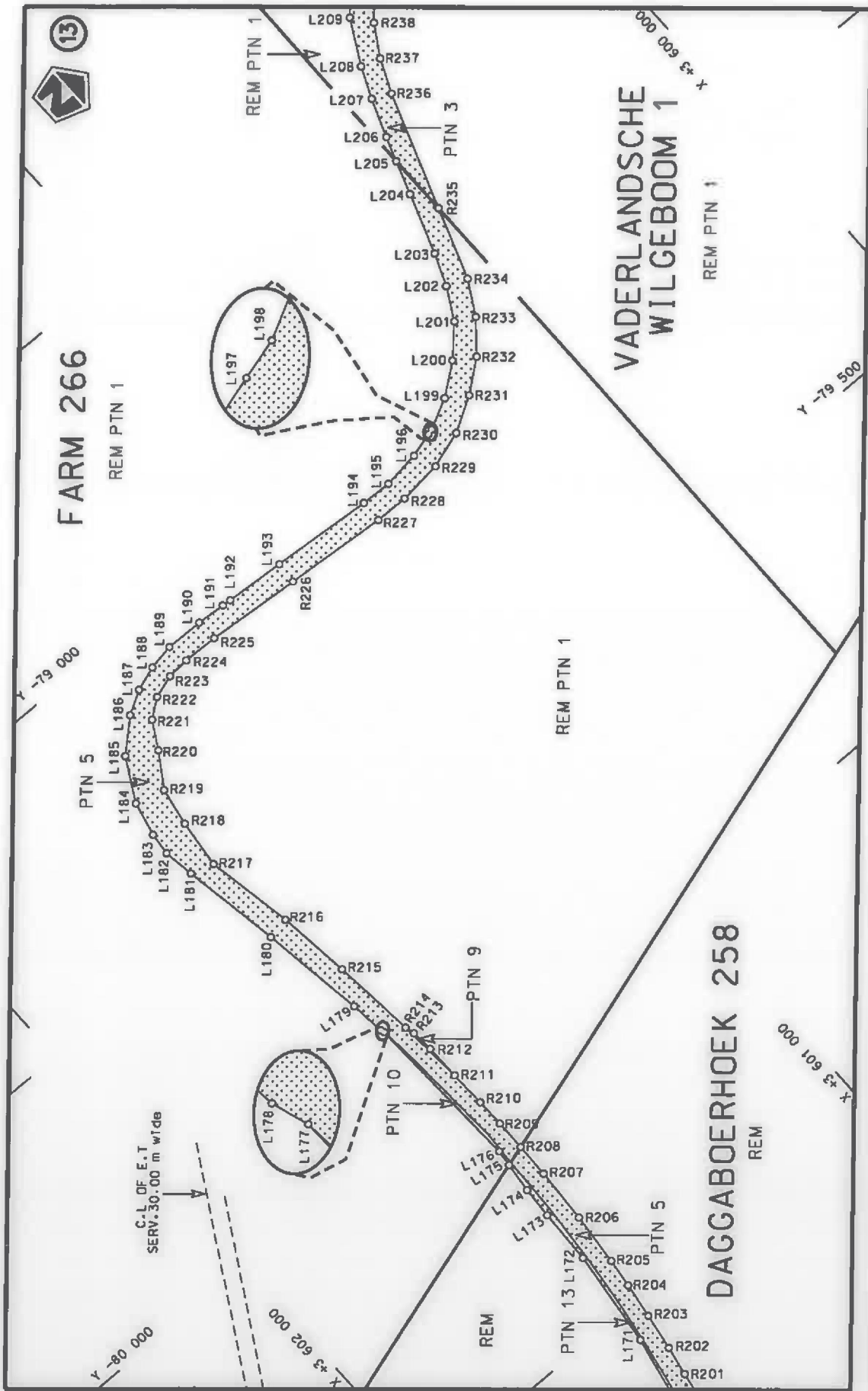





Die Suid Afrikaanse Nasionale Padagentskap MSB Bpk The South African National Roads Agency SOC Ltd	Die figuur getoon The figure shown		steldie podreserwe voor van 'n gedeelte represents the road reserve of a portion van Nasionale Roete N10 of National Route Section	Vel Sheet 4 of 29
			3	Plan P1047/18

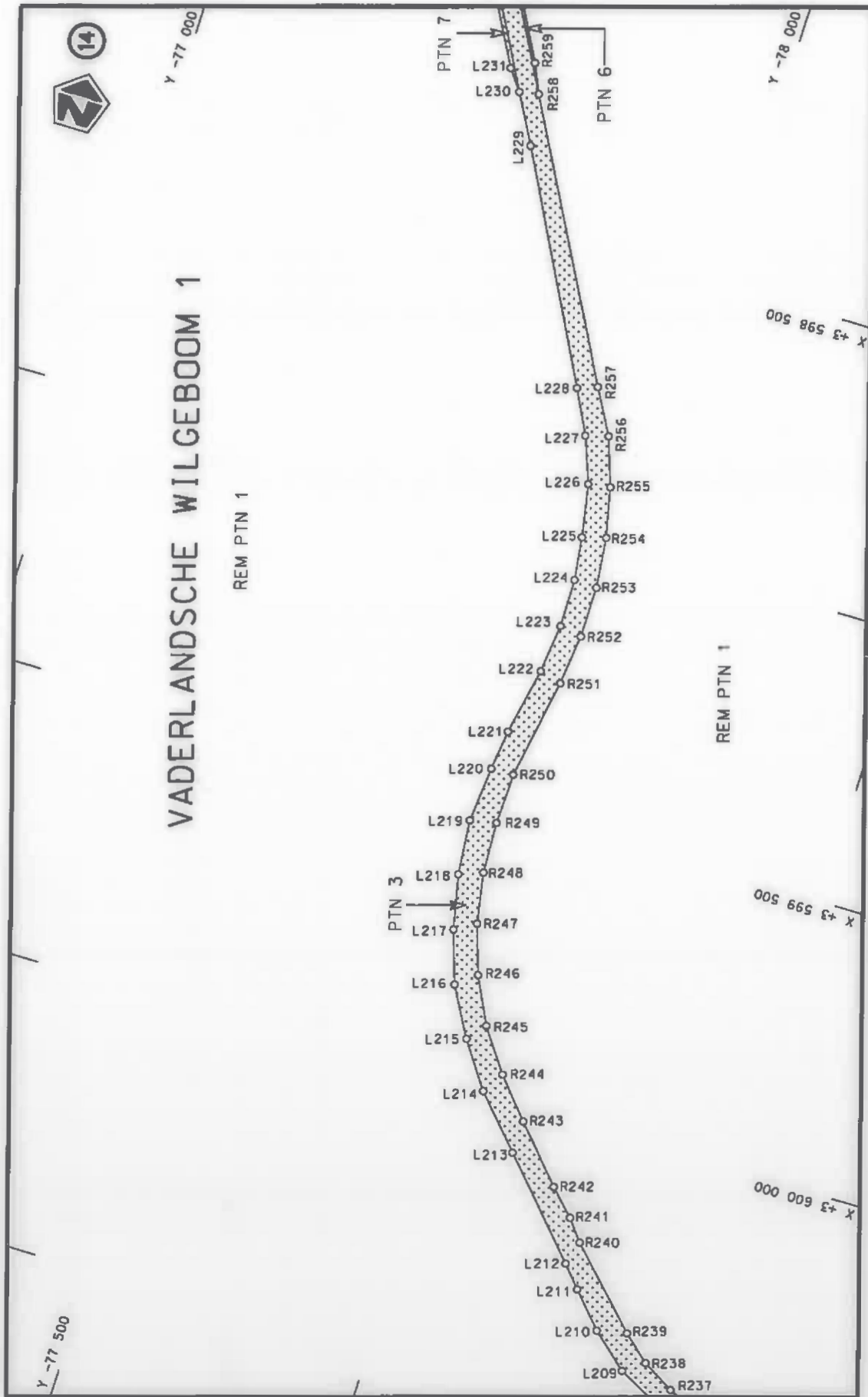


Die Suid Afrikaanse Nasionale Padogentskap MSB Bpk The South African National Roads Agency SOC Ltd	Die figuur getoon The figure shown		stel die padreserwe voor van 'n gedeelte represents the road reserve of a portion van Nasionale Roete N10 of National Route	Val
				Sheet 5 of 29
				Plan P1047/18
				Section 3

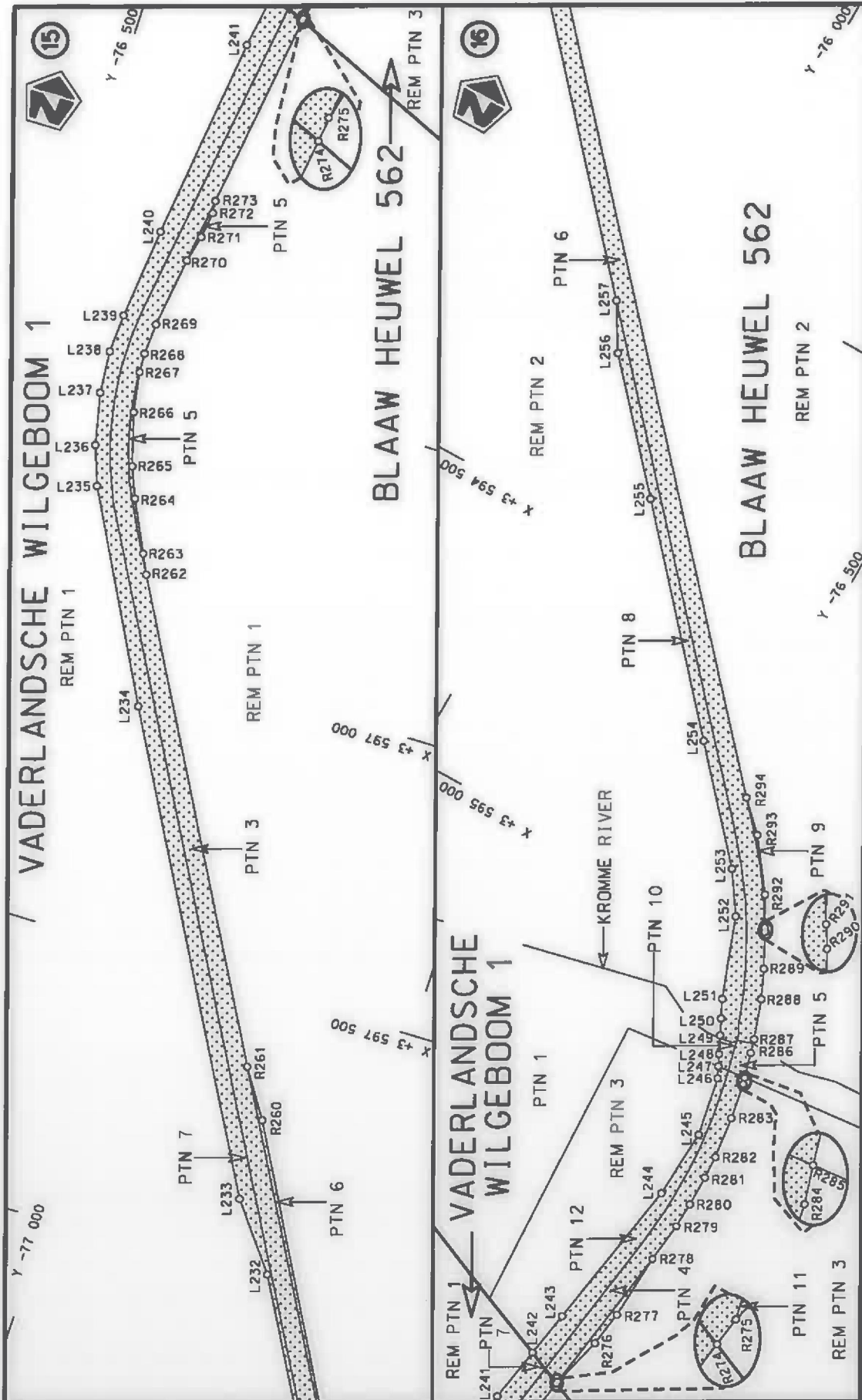


Die Suid Afrikaanse Nasionale Podagentskap MSB Bpk The South African National Roads Agency SOC Ltd	Die figuur getoon The figure shown		stel die podreserwe voor van 'n gedeelte represents the road reserve of a portion van Nasionale Roete N10 of National Route	3
			Section	Plan P1047/18
		Vel Sheet 6 of 29		





<p>Die Suid-Afrikaanse Nasionale Padagentskap MSB Bpk The South African National Roads Agency SOC Ltd</p>	<p>Die figuur getoon The figure shown</p>	<p>steldie padreserwe voor van 'n gedeelte represents the road reserve of a portion van Nasionale Roete N10 of National Route</p>	<p>Vel Sheet 7 of 29 Plan P1047/18</p>
<p>3</p>		<p>Seksie Section</p>	



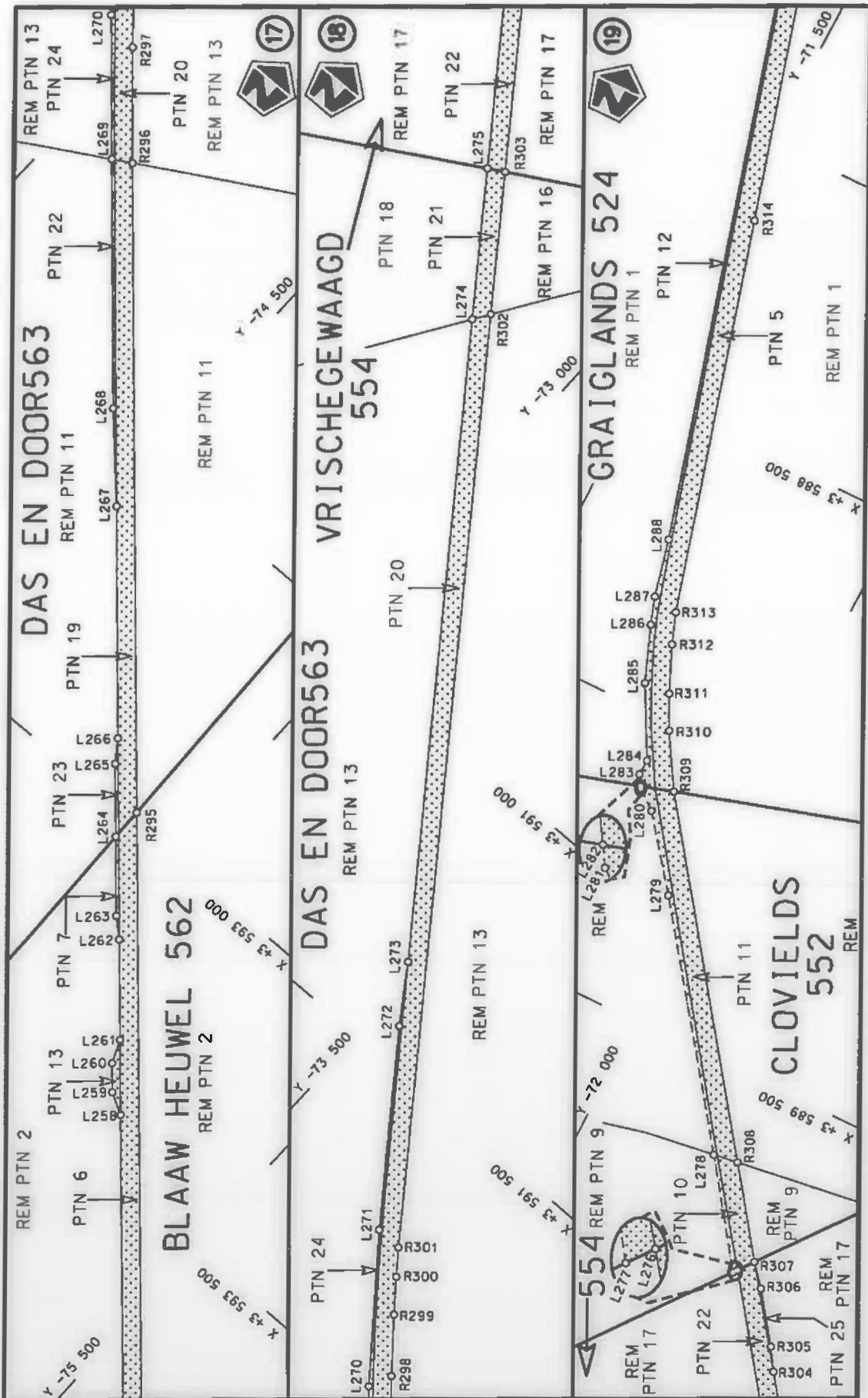
Vel  
Sheet 8 of 29  
Plan P1047/18

steldie padreserwe voor 'n gedeelte  
represents the road reserve of a portion  
van Nasionale Roete N10 Saksie  
of National Route Section 3

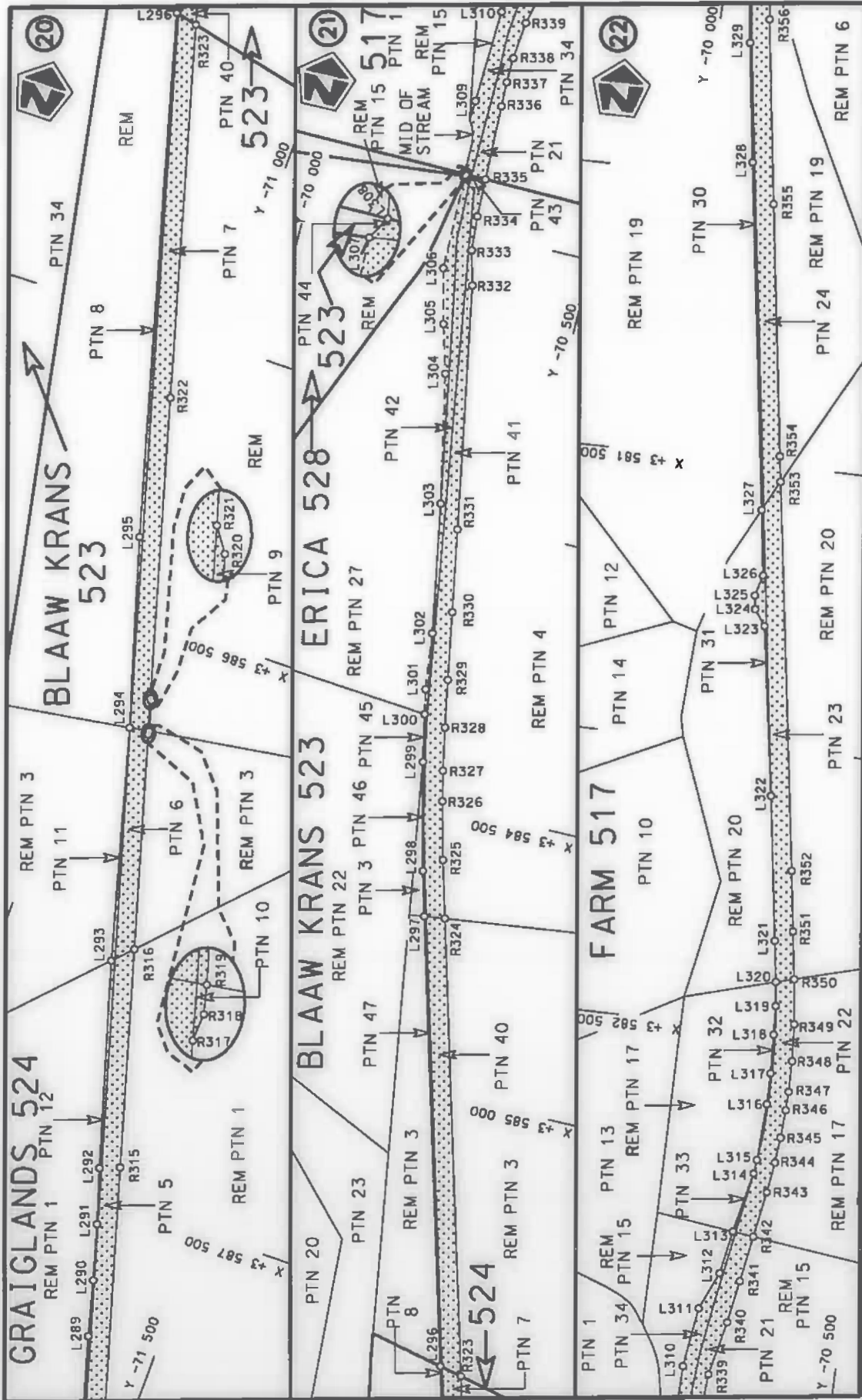


Die figuur getoon  
The figure shown

Die Suid Afrikaanse Nasionale Padregentskap MSB Bpk  
The South African National Roads Agency SOC Ltd

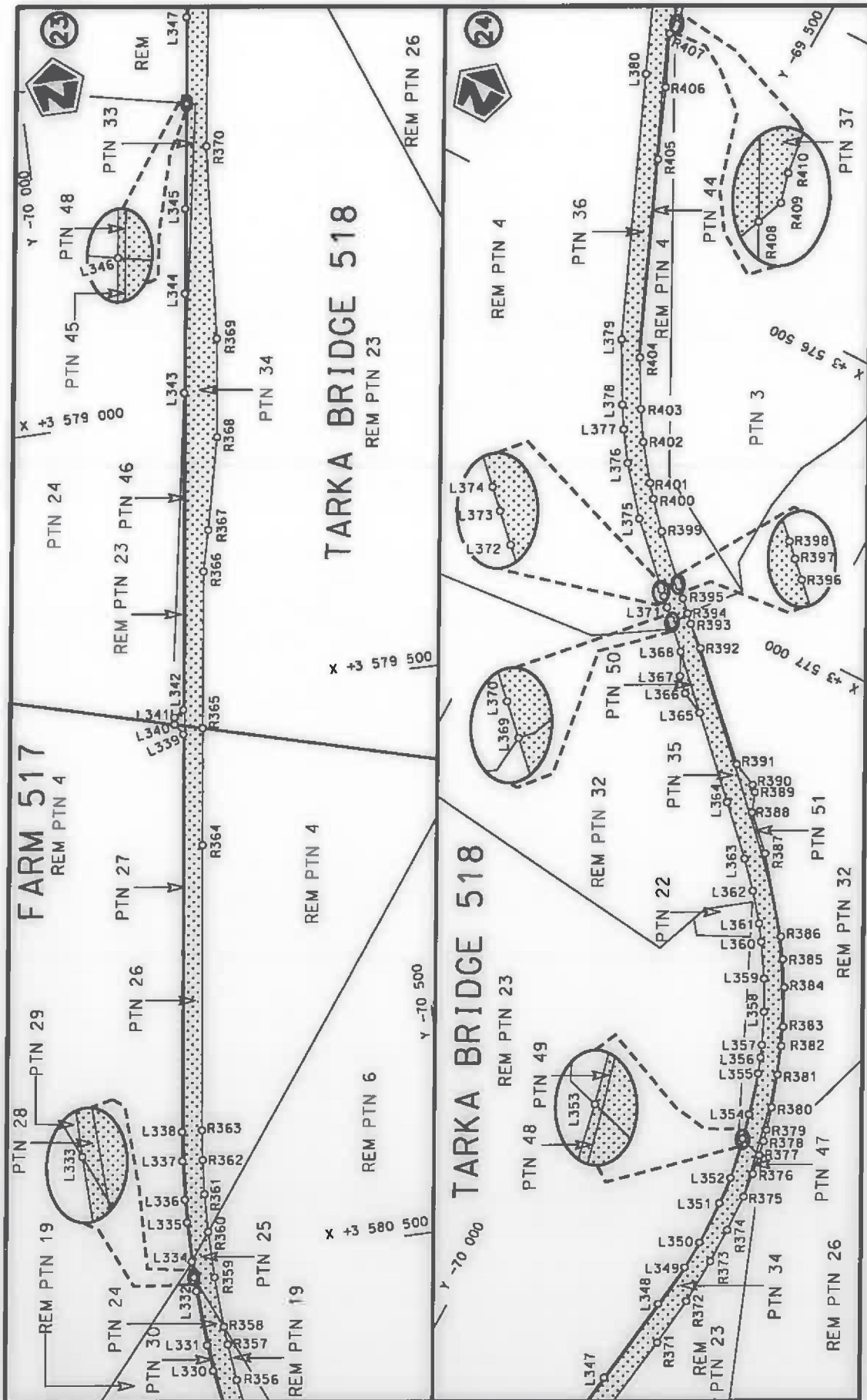


Die Suid Afrikaanse Nasionale Padagentskap MSB Bpk The South African National Roads Agency SOC Ltd	Die figuur getoon The figure shown	stel die padreserwe voor van 'n gedeelte represents the road reserve of a portion van Nasionale Roete N10 of National Route	3
		N10	Seksie
			Section
			Plan P1047/18
			Sheet 9 of 29
			Vol van



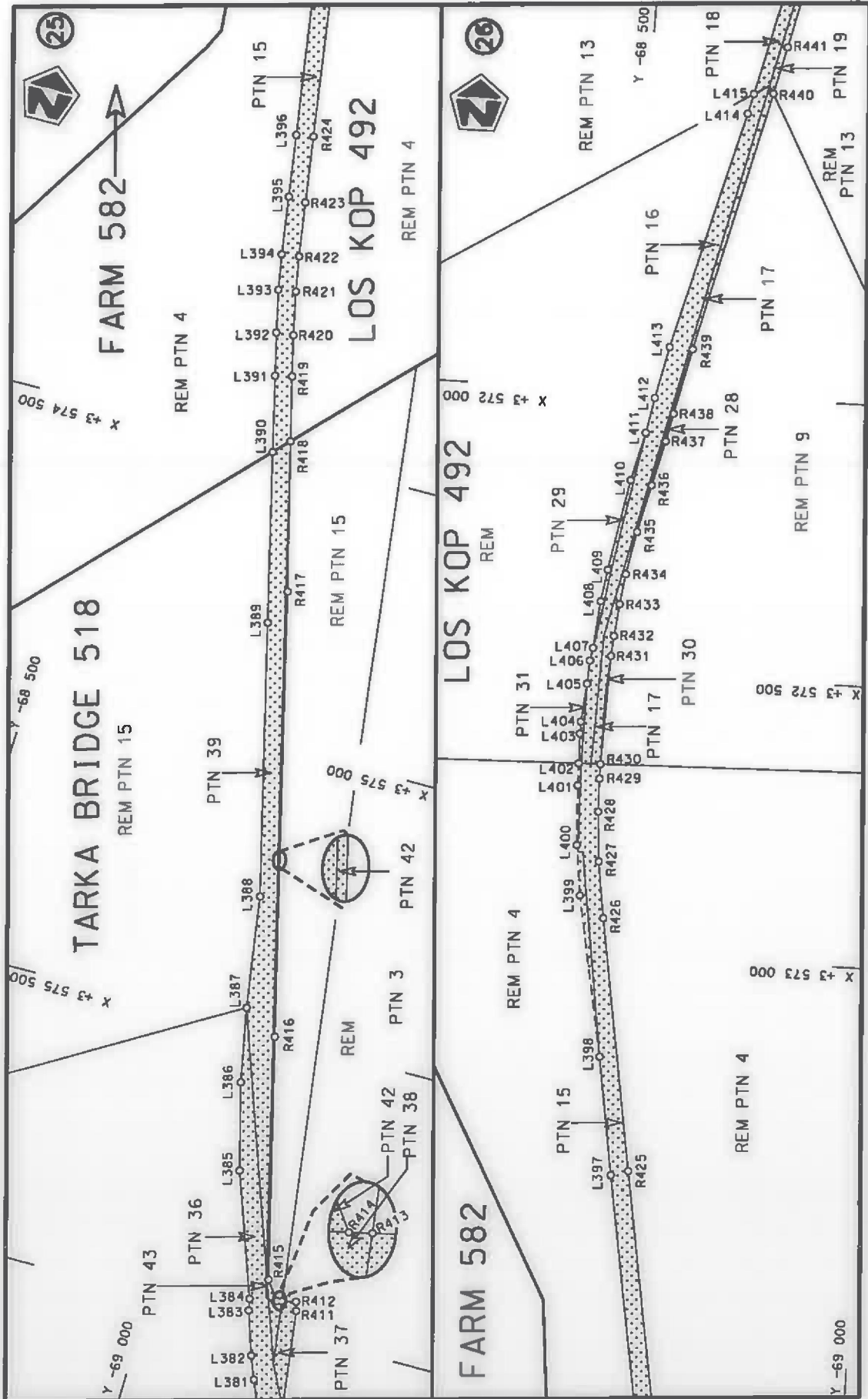
<p>Die Suid Afrikaanse Nasionale Padagentskap MSB Bpk The South African National Roads Agency SOC Ltd</p>	<p>Die figuur getoon The figure shown</p>	<p>stel die padreserwe voor van 'n gedeelte represents the road reserve of a portion van Nasionale Roete N10 of National Route</p>	<p>Vel Sheet 10 of 29</p> <p>Plan P1047/18</p>
---	---	--	--




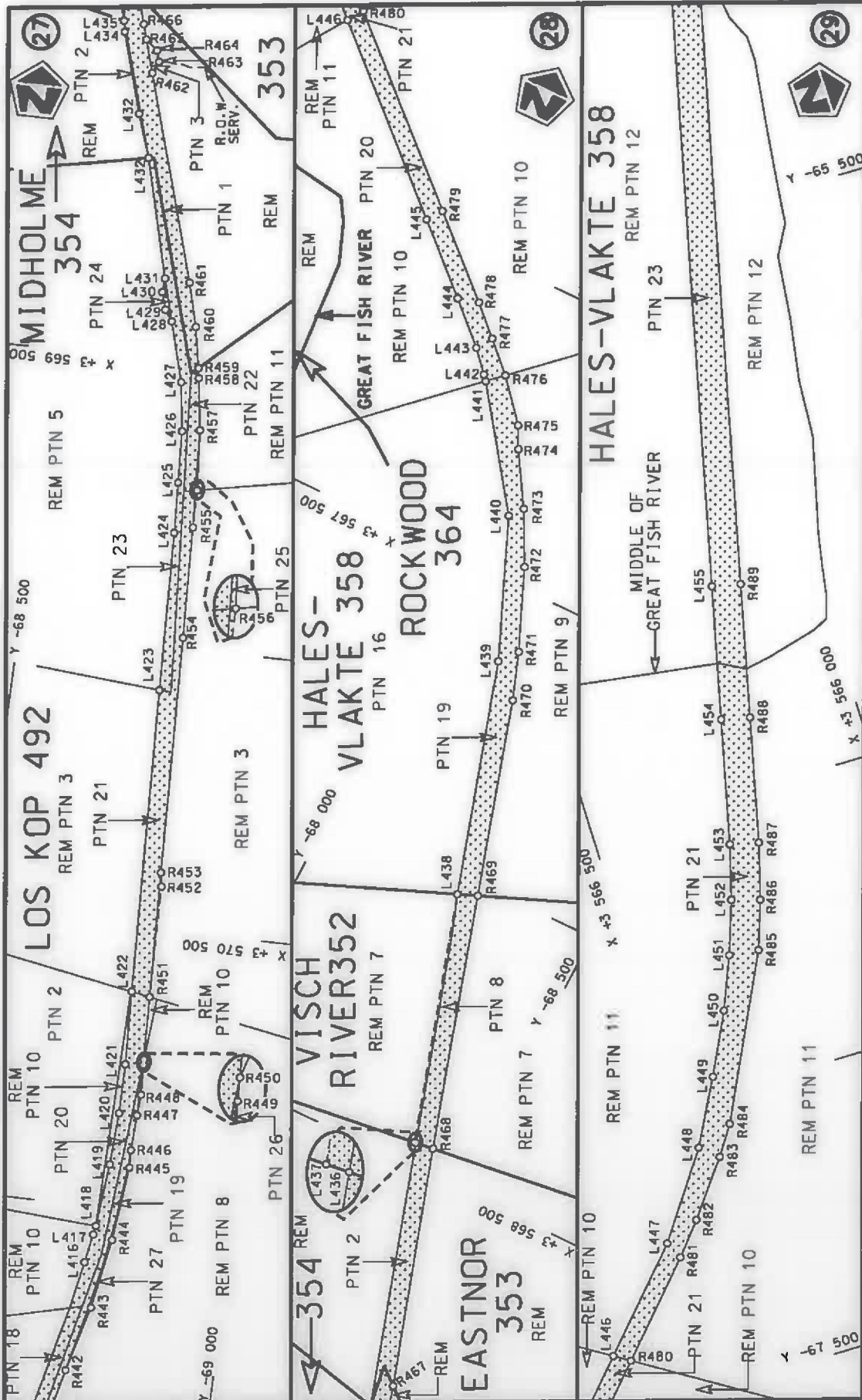


<p>Die Suid Afrikaanse Nasionale Padagantskap MSB Bpk The South African National Roads Agency SOC Ltd</p>	<p>Die figuur getoon The figure shown</p>	<p>stel die padreserwe voor van 'n gedeelte represents the road reserve of a portion van Nasionale Roete N10 of National Route</p>	<p>Vel Sheet 11 of 29</p>	<p>3</p>	<p>Seksie Section</p>	<p>Plan P1047/18</p>
---	---	--	-------------------------------	----------	---------------------------	----------------------

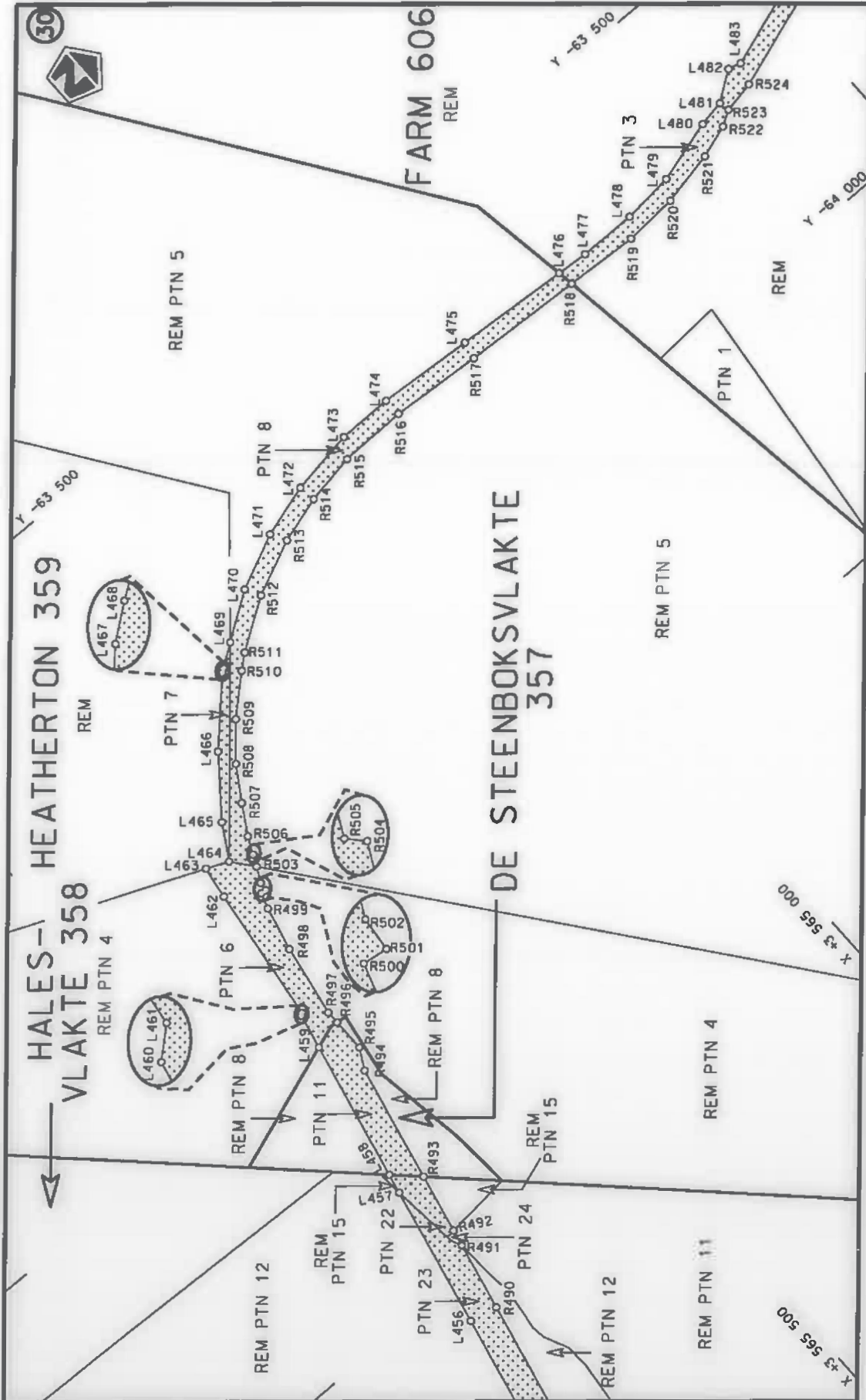




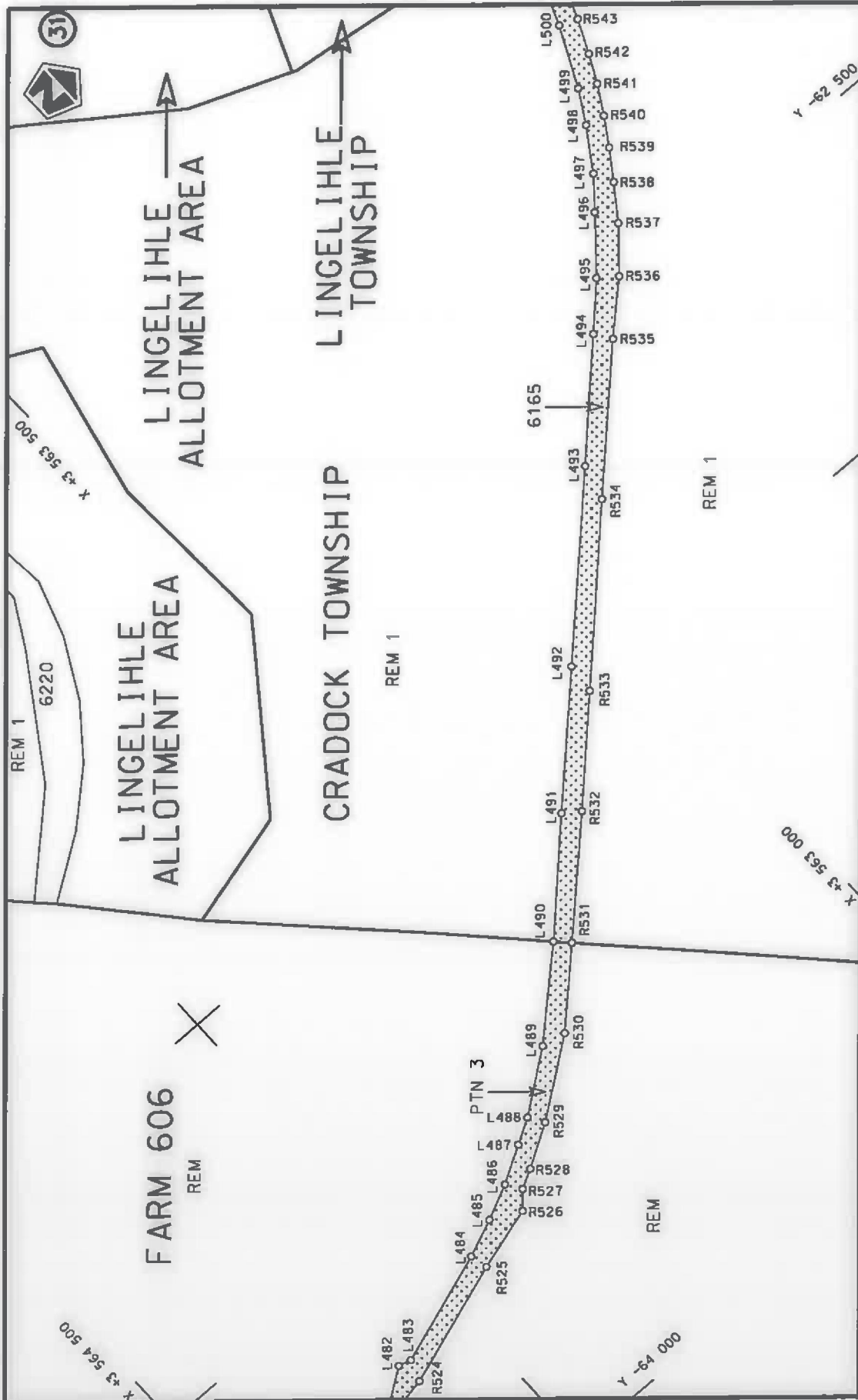
Die Suid-Afrikaanse Nasionale Padagentskap MSB Bpk The South African National Roads Agency SOC Ltd	Die figuur getoon The figure shown		steldie padreserwe voor van 'n gedeelte represents the road reserve of a portion van Nasionale Roete N10 of National Route	Sektie Section	3
			Vel Sheet	12 of	29



Die Suid Afrikaanse Nasionale Padagentskap MSB Bpk The South African National Roads Agency SOC Ltd	Die figuur getoon The figure shown		steldie padreserwe voor van 'n gedeelte represents the road reserve of a portion van Nasionale Roete N10 of National Route	3 Seksie Section
			Vel Sheet	13 of
			Plan	P1047/18

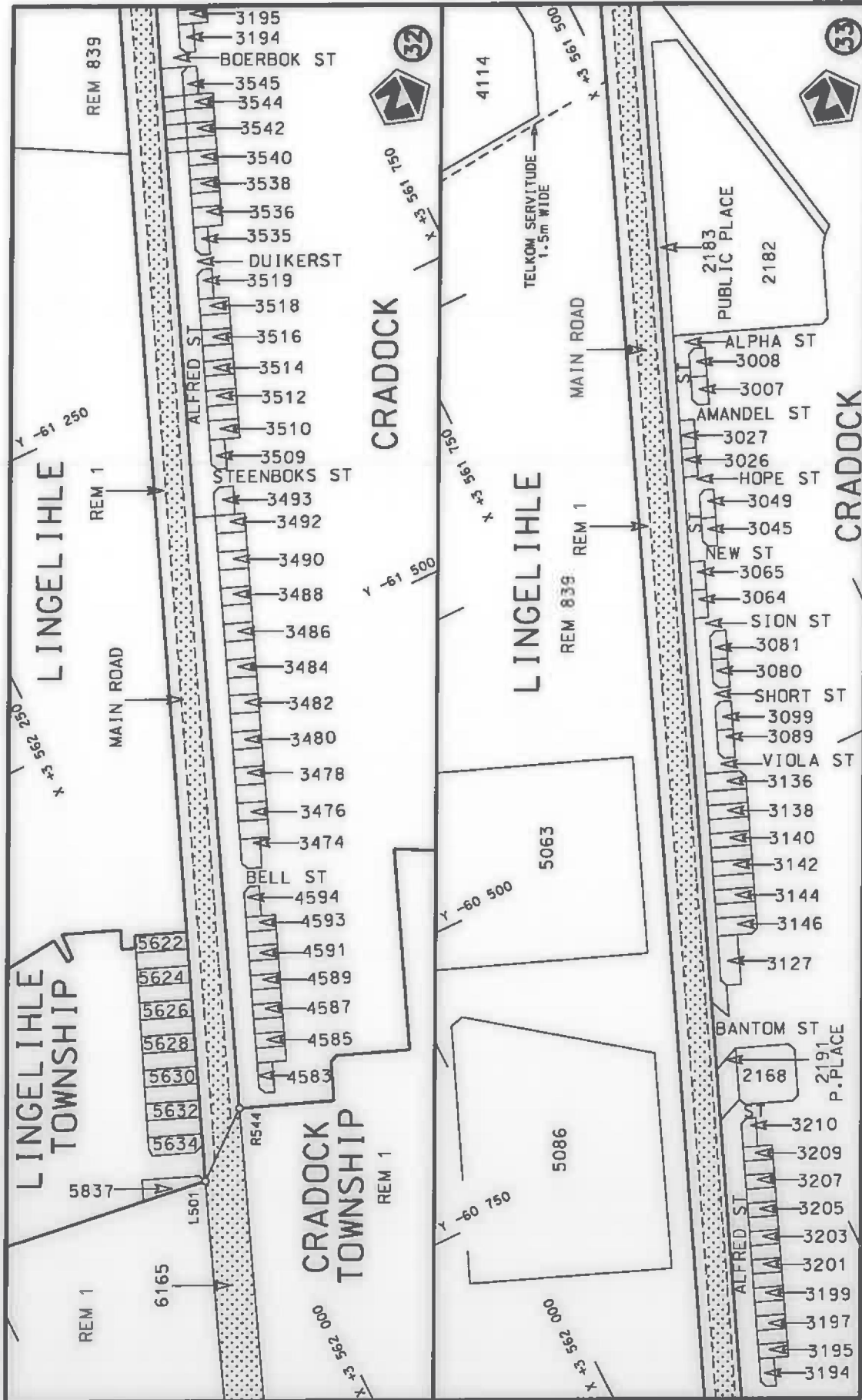


<p>Die Suid Afrikaanse Nasionale Padagentskap MSB Bpk The South African National Roads Agency SOC Ltd</p>	<p>Die figuur getoon The figure shown</p>	<p>stel die padreserwe voor van 'n gedeelte represents the road reserve of a portion van Nasionale Roete N10 of National Route</p>	<p>Vel Sheet 14 of 29 Plan P1047/18</p>
		<p>3</p>	<p>Section</p>



<p>Die Suid Afrikaanse Nasionale Padagentakop MSB Bpk The South African National Roads Agency SOC Ltd</p>	<p>Die figuur getoon The figure shown</p> 	<p>stel die padreserwe voor van 'n gedeelte represents the road reserve of a portion van Nasionale Roete N10 Seksie 3 of National Route of National Route Section</p>	<p>Vel Sheet 15 of 29 Plan P1047/18</p>
---	---	---	---





Vel  
Sheet 16 of 29  
Plan P1047/18

steidle padreserwe voor 'n gedeelte  
represents the road reserve of a portion  
von Nasionale Roete N10 Seksie 3  
of National Route Section



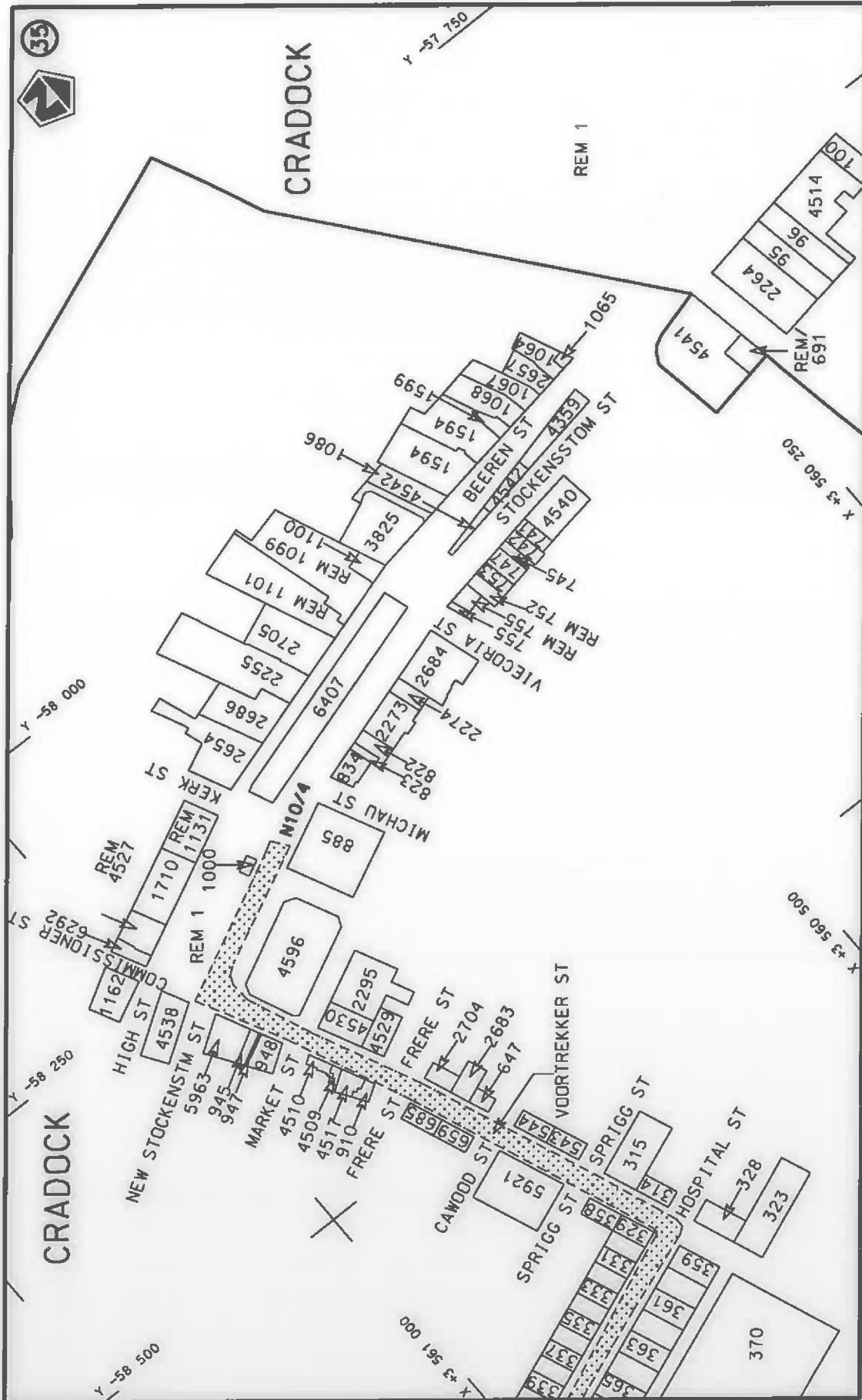
Die figuur getoon  
The figure shown

Die Suid Afrikaanse Nasionale Padagentskap MSB Bpk  
The South African National Roads Agency SOC Ltd





<p>Die Suid Afrikaanse Nasionale Padagentskap MSB Bpk The South African National Roads Agency SOC Ltd</p>	<p>Die figuur getoon The figure shown</p>	<p>stel die padreserwe voor van 'n gedeelte represents the road reserve of a portion van Nasionale Roete N10 of National Route</p>	<p>Vel Sheet 17 of 29 Plan P1047/18</p>
		<p>3 Seksie Section</p>	



Die Suid Afrikaanse Nasionale Padagentskap MSB Bpk The South African National Roads Agency SOC Ltd	Die figuur getoon The figure shown	steldie podreserwe voor van 'n gedeelte represents the road reserve of a portion van Nasionale Roete N10 of National Route	Vel Sheet 18 of 29	3 Seksie N10	Plan P1047/18
---	---------------------------------------	---	--------------------------	--------------------	------------------

PADRESERWE KOÖRDINATE / ROAD RESERVE CO-ORDINATES							
LINKERKANT/LEFT HAND SIDE				REGTERKANT/RIGHT HAND SIDE			
	Y	X	WG 25°		Y	X	
L1	-75 935.67	3 625 004.76		R1	-75 938.58	3 625 046.52	
L2	-75 990.05	3 624 976.83		R2	-76 001.77	3 625 003.51	
L3	-76 337.07	3 624 788.37		R3	-76 034.84	3 624 981.00	
L4	-76 844.89	3 624 511.85		R4	-76 065.97	3 624 995.76	
L5	-77 723.39	3 624 033.89		R5	-76 227.84	3 624 909.40	
L6	-77 949.11	3 623 911.08		R6	-76 252.48	3 624 877.47	
L7	-77 975.86	3 623 896.43		R7	-76 414.82	3 624 785.86	
L8	-78 558.21	3 623 579.41		R8	-76 520.77	3 624 726.07	
L9	-79 728.88	3 622 942.12		R9	-76 820.24	3 624 562.95	
L10	-79 775.57	3 622 916.71		R10	-77 698.92	3 624 084.76	
L11	-79 881.64	3 622 859.13		R11	-77 746.16	3 624 059.06	
L12	-80 086.66	3 622 747.84		R12	-77 760.96	3 624 050.98	
L13	-80 149.24	3 622 711.51		R13	-77 788.82	3 624 035.76	
L14	-80 222.06	3 622 663.34		R14	-78 225.50	3 623 797.91	
L15	-80 301.97	3 622 599.85		R15	-78 279.94	3 623 772.55	
L16	-80 417.48	3 622 488.79		R16	-78 825.88	3 623 475.48	
L17	-80 436.29	3 622 465.99		R17	-79 123.19	3 623 313.70	
L18	-80 449.79	3 622 449.47		R18	-79 174.16	3 623 281.75	
L19	-80 496.65	3 622 389.80		R19	-79 516.95	3 623 095.17	
L20	-80 581.48	3 622 254.99		R20	-79 570.06	3 623 071.16	
L21	-80 608.08	3 622 202.72		R21	-79 662.91	3 623 022.08	
L22	-80 618.80	3 622 175.46		R22	-79 810.13	3 622 944.25	
L23	-80 671.99	3 622 040.18		R23	-79 921.88	3 622 885.69	
L24	-80 687.28	3 621 983.79		R24	-79 927.85	3 622 882.56	
L25	-80 694.80	3 621 955.47		R25	-80 091.14	3 622 792.76	
L26	-80 710.53	3 621 874.64		R26	-80 114.72	3 622 774.06	
L27	-80 801.05	3 621 295.99		R27	-80 156.88	3 622 750.29	
L28	-80 815.90	3 621 201.41		R28	-80 243.47	3 622 696.06	
L29	-80 834.03	3 621 085.88		R29	-80 290.21	3 622 661.31	
L30	-80 834.19	3 621 084.88		R30	-80 324.57	3 622 629.97	
L31	-80 950.10	3 620 341.25		R31	-80 338.41	3 622 612.83	
L32	-81 023.14	3 619 663.96		R32	-80 384.88	3 622 571.79	
L33	-81 057.64	3 619 330.68		R33	-80 420.88	3 622 533.54	
L34	-81 106.58	3 618 857.90		R34	-80 465.92	3 622 483.05	
L35	-81 191.08	3 618 042.02		R35	-80 508.49	3 622 429.80	
L36	-81 203.02	3 617 975.35		R36	-80 547.40	3 622 375.48	
L37	-81 242.90	3 617 857.97		R37	-80 584.10	3 622 318.24	
L38	-81 267.96	3 617 807.94		R38	-80 607.12	3 622 280.94	
L39	-81 304.28	3 617 751.74		R39	-80 646.84	3 622 197.66	
L40	-81 338.71	3 617 708.23		R40	-80 650.58	3 622 188.87	
L41	-81 406.06	3 617 630.04		R41	-80 673.50	3 622 135.07	
L42	-81 422.70	3 617 610.66		R42	-80 702.93	3 622 056.03	
L43	-81 857.26	3 617 110.27		R43	-80 718.89	3 621 997.43	
L44	-81 896.86	3 617 074.77		R44	-80 731.74	3 621 939.79	
L45	-81 938.92	3 617 044.17		R45	-80 744.14	3 621 872.96	
L46	-81 996.47	3 617 013.21		R46	-80 819.53	3 621 404.37	
L47	-82 044.44	3 616 994.00		R47	-80 832.57	3 621 311.03	
L48	-82 295.57	3 616 945.85		R48	-80 851.89	3 621 254.05	
L49	-82 310.42	3 616 943.00		R49	-80 863.44	3 621 197.64	
L50	-82 318.67	3 616 936.23		R50	-80 870.30	3 621 139.00	
L51	-82 318.82	3 616 936.10		R51	-80 872.93	3 621 098.76	

Vel  
Sheet19 Van  
of 29

P1047/18

PADRESERWE KOÖRDINATE / ROAD RESERVE CO-ORDINATES						
LINKERKANT/LEFT HAND SIDE				REGTERKANT/RIGHT HAND SIDE		
	Y	X	WG 25°		Y	X
L52	-82 342.55	3 616 932.06		R52	-80 878.29	3 621 016.63
L53	-82 420.72	3 616 904.38		R53	-80 897.06	3 620 896.26
L54	-82 516.78	3 616 860.93		R54	-80 896.53	3 620 888.48
L55	-82 551.53	3 616 844.03		R55	-80 940.36	3 620 608.05
L56	-82 594.81	3 616 825.80		R56	-80 952.93	3 620 599.53
L57	-82 612.08	3 616 818.53		R57	-80 968.38	3 620 500.93
L58	-82 698.60	3 616 801.06		R58	-80 960.25	3 620 489.44
L59	-82 713.26	3 616 800.31		R59	-80 996.19	3 620 251.38
L60	-82 874.92	3 616 791.87		R60	-81 019.18	3 620 025.07
L61	-82 923.48	3 616 776.99		R61	-81 017.92	3 620 015.45
L62	-82 986.18	3 616 756.73		R62	-81 047.49	3 619 733.80
L63	-83 036.40	3 616 726.92		R63	-81 049.88	3 619 726.72
L64	-83 081.84	3 616 689.69		R64	-81 090.50	3 619 334.29
L65	-83 121.22	3 616 646.38		R65	-81 093.20	3 619 308.28
L66	-83 153.94	3 616 597.50		R66	-81 092.28	3 619 300.81
L67	-83 180.87	3 616 538.28		R67	-81 109.19	3 619 137.36
L68	-83 196.54	3 616 483.49		R68	-81 111.65	3 619 129.91
L69	-83 201.27	3 616 411.07		R69	-81 202.24	3 618 253.74
L70	-83 201.15	3 616 391.59		R70	-81 223.08	3 618 040.37
L71	-83 201.11	3 616 391.08		R71	-81 234.47	3 617 982.35
L72	-83 187.39	3 616 380.42		R72	-81 259.63	3 617 901.80
L73	-83 196.19	3 616 324.44		R73	-81 285.05	3 617 851.52
L74	-83 195.27	3 616 312.07		R74	-81 333.88	3 617 770.38
L75	-83 167.43	3 615 935.08		R75	-81 783.93	3 617 248.05
L76	-83 144.36	3 615 656.27		R76	-82 009.53	3 617 122.94
L77	-83 078.08	3 614 855.53		R77	-82 246.54	3 617 073.57
L78	-83 084.82	3 614 665.56		R78	-82 336.02	3 617 018.46
L79	-83 117.61	3 614 490.26		R79	-82 357.50	3 616 992.85
L80	-83 120.84	3 614 479.14		R80	-82 363.29	3 616 974.57
L81	-83 154.81	3 614 372.92		R81	-82 366.14	3 616 965.56
L82	-83 176.89	3 614 318.02		R82	-82 419.92	3 616 960.49
L83	-83 234.86	3 614 200.81		R83	-82 441.08	3 616 948.56
L84	-83 262.93	3 614 152.76		R84	-82 487.70	3 616 927.27
L85	-83 881.67	3 613 199.90		R85	-82 587.22	3 616 934.97
L86	-83 913.46	3 613 148.08		R86	-82 893.88	3 616 834.24
L87	-83 954.80	3 613 070.33		R87	-82 892.46	3 616 820.40
L88	-83 990.65	3 612 990.23		R88	-82 990.49	3 616 795.19
L89	-84 020.18	3 612 907.15		R89	-83 118.53	3 616 708.76
L90	-84 045.78	3 612 812.25		R90	-83 167.96	3 616 649.14
L91	-84 062.29	3 612 726.05		R91	-83 207.85	3 616 574.68
L92	-84 072.26	3 612 638.60		R92	-83 239.95	3 616 478.84
L93	-84 070.62	3 612 441.18		R93	-83 242.66	3 616 371.87
L94	-84 067.13	3 612 407.61		R94	-83 236.63	3 616 304.56
L95	-84 062.37	3 612 365.36		R95	-83 234.15	3 616 276.83
L96	-84 048.52	3 612 290.21		R96	-83 211.50	3 616 023.57
L97	-83 545.81	3 610 000.50		R97	-83 210.36	3 616 010.87
L98	-83 542.11	3 609 983.57		R98	-83 210.92	3 615 990.14
L99	-83 538.41	3 609 966.64		R99	-83 203.35	3 615 985.91
L100	-83 529.51	3 609 928.18		R100	-83 173.72	3 615 628.51
L101	-83 520.61	3 609 889.72		R101	-83 109.48	3 614 853.77
L102	-83 493.02	3 609 795.27		R102	-83 108.88	3 614 777.86

Vel 20 Van of 29  
Sheet of

P1047/18



PADRESERWE KOÖRDINATE / ROAD RESERVE CO-ORDINATES									
LINKERKANT/LEFT HAND SIDE					REGTERKANT/RIGHT HAND SIDE				
	Y	X	WG 25°		Y	X			
L103	-83	489.76	3 609	785.76	R103	-83	110.75	3 614	731.71
L104	-83	415.91	3 609	672.02	R104	-83	115.13	3 614	676.51
L105	-83	395.94	3 609	622.41	R105	-83	124.13	3 614	610.62
L106	-83	391.53	3 609	614.36	R106	-83	134.51	3 614	556.13
L107	-83	221.14	3 609	303.19	R107	-83	146.52	3 614	501.93
L108	-83	247.77	3 609	288.77	R108	-83	165.38	3 614	437.89
L109	-83	204.42	3 609	210.06	R109	-83	183.22	3 614	385.53
L110	-83	162.37	3 609	132.48	R110	-83	205.87	3 614	328.80
L111	-83	136.16	3 609	071.96	R111	-83	208.41	3 614	326.74
L112	-83	128.58	3 609	052.31	R112	-83	239.20	3 614	261.53
L113	-83	112.94	3 608	991.07	R113	-83	294.62	3 614	164.63
L114	-83	101.15	3 608	945.26	R114	-83	380.52	3 614	032.99
L115	-83	094.08	3 608	899.98	R115	-83	836.42	3 613	329.32
L116	-83	091.01	3 608	834.73	R116	-83	939.37	3 613	168.97
L117	-83	100.95	3 608	627.53	R117	-83	974.32	3 613	107.77
L118	-83	107.61	3 608	559.63	R118	-84	010.33	3 613	033.46
L119	-83	111.64	3 608	475.63	R119	-84	043.31	3 612	947.16
L120	-83	099.94	3 608	426.01	R120	-84	069.71	3 612	863.67
L121	-83	101.95	3 608	386.29	R121	-84	089.16	3 612	771.59
L122	-83	118.09	3 608	341.14	R122	-84	104.47	3 612	683.49
L123	-83	125.25	3 608	191.67	R123	-84	108.95	3 612	595.45
L124	-83	138.15	3 607	770.21	R124	-84	108.16	3 612	507.32
L125	-83	125.77	3 607	691.34	R125	-84	105.74	3 612	431.93
L126	-83	139.47	3 607	290.93	R126	-84	095.49	3 612	344.40
L127	-83	144.08	3 607	156.26	R127	-84	078.15	3 612	260.73
L128	-83	163.29	3 606	888.73	R128	-84	058.73	3 612	184.18
L129	-83	193.64	3 606	788.67	R129	-83	972.79	3 611	789.58
L130	-83	305.76	3 604	589.75	R130	-83	980.39	3 611	777.42
L131	-83	293.51	3 604	547.03	R131	-83	958.99	3 611	679.75
L132	-83	295.12	3 604	515.07	R132	-83	947.15	3 611	672.37
L133	-83	311.65	3 604	473.66	R133	-83	860.78	3 611	278.05
L134	-83	341.09	3 603	892.88	R134	-83	638.07	3 610	260.35
L135	-83	333.62	3 603	897.49	R135	-83	628.86	3 610	200.97
L136	-83	334.23	3 603	886.00	R136	-83	595.55	3 610	048.96
L137	-83	342.50	3 603	863.49	R137	-83	599.07	3 610	047.60
L138	-83	374.70	3 603	224.59	R138	-83	600.36	3 610	020.21
L139	-83	368.29	3 603	204.23	R139	-83	588.16	3 610	015.81
L140	-83	369.34	3 603	183.90	R140	-83	559.63	3 609	892.09
L141	-83	380.16	3 603	116.03	R141	-83	523.75	3 609	770.75
L142	-83	380.04	3 603	057.31	R142	-83	500.68	3 609	637.63
L143	-83	374.38	3 603	001.33	R143	-83	479.40	3 609	585.20
L144	-83	359.87	3 602	934.45	R144	-83	295.26	3 609	244.85
L145	-83	344.82	3 602	893.10	R145	-83	268.68	3 609	259.33
L146	-83	341.83	3 602	886.01	R146	-83	189.71	3 609	116.54
L147	-83	242.46	3 602	719.69	R147	-83	155.17	3 609	040.16
L148	-83	203.63	3 602	676.78	R148	-83	147.13	3 609	016.45
L149	-83	161.22	3 602	637.72	R149	-83	131.50	3 608	936.91
L150	-83	115.55	3 602	601.96	R150	-83	126.63	3 608	816.28
L151	-83	022.57	3 602	542.95	R151	-83	202.06	3 607	274.34
L152	-82	980.75	3 602	526.63	R152	-83	214.18	3 607	180.79
L153	-82	922.19	3 602	511.79	R153	-83	219.51	3 607	074.36

Vel  
Sheet

21

Van  
of

29

P1047/18



PADRESERWE KOÖRDINATE / ROAD RESERVE CO-ORDINATES											
LINKERKANT/LEFT HAND SIDE					REGTERKANT/RIGHT HAND SIDE						
	Y		X	WG 25°		Y		X			
L154	-82	845.73	3	602	488.44	R154	-83	220.31	3	606	912.28
L155	-82	767.60	3	602	470.68	R155	-83	337.69	3	604	577.75
L156	-82	707.89	3	602	457.50	R156	-83	373.43	3	603	872.89
L157	-82	649.59	3	602	439.62	R157	-83	411.70	3	603	115.91
L158	-82	618.30	3	602	429.75	R158	-83	411.81	3	603	061.48
L159	-82	514.31	3	602	387.99	R159	-83	403.63	3	602	985.45
L160	-82	404.41	3	602	354.58	R160	-83	392.21	3	602	932.06
L161	-82	354.60	3	602	341.10	R161	-83	399.62	3	602	928.40
L162	-82	301.65	3	602	321.39	R162	-83	378.15	3	602	883.57
L163	-82	129.44	3	602	237.87	R163	-83	349.42	3	602	815.63
L164	-81	689.67	3	601	996.87	R164	-83	317.89	3	602	758.95
L165	-81	477.21	3	601	882.31	R165	-83	281.55	3	602	705.42
L166	-81	334.90	3	601	810.57	R166	-83	239.67	3	602	656.45
L167	-81	226.19	3	601	762.58	R167	-83	199.09	3	602	618.26
L168	-81	114.39	3	601	719.63	R168	-83	146.62	3	602	577.12
L169	-80	929.59	3	601	657.29	R169	-83	142.14	3	602	574.07
L170	-80	780.88	3	601	615.45	R170	-83	111.74	3	602	553.02
L171	-80	558.35	3	601	570.18	R171	-83	067.34	3	602	525.55
L172	-80	380.66	3	601	549.49	R172	-83	028.59	3	602	505.92
L173	-80	281.34	3	601	545.79	R173	-82	997.03	3	602	493.74
L174	-80	224.38	3	601	542.25	R174	-82	970.75	3	602	485.93
L175	-80	169.39	3	601	536.34	R175	-82	862.07	3	602	457.70
L176	-80	139.83	3	601	532.89	R176	-82	798.36	3	602	439.73
L177	-79	846.20	3	601	541.75	R177	-82	782.07	3	602	435.42
L178	-79	839.60	3	601	543.91	R178	-82	732.29	3	602	400.73
L179	-79	776.55	3	601	550.53	R179	-82	718.01	3	602	415.82
L180	-79	586.02	3	601	578.75	R180	-82	676.27	3	602	401.02
L181	-79	407.45	3	601	608.84	R181	-82	555.25	3	602	364.98
L182	-79	351.71	3	601	617.06	R182	-82	514.63	3	602	351.59
L183	-79	310.43	3	601	612.95	R183	-82	304.38	3	602	282.22
L184	-79	247.79	3	601	598.85	R184	-82	268.37	3	602	267.54
L185	-79	171.29	3	601	557.15	R185	-82	214.44	3	602	241.28
L186	-79	121.17	3	601	502.94	R186	-81	710.21	3	601	970.09
L187	-79	097.09	3	601	461.62	R187	-81	526.28	3	601	871.78
L188	-79	082.26	3	601	417.83	R188	-81	464.79	3	601	837.69
L189	-79	074.64	3	601	371.64	R189	-81	402.07	3	601	805.46
L190	-79	076.12	3	601	303.74	R190	-81	291.98	3	601	753.13
L191	-79	080.01	3	601	252.95	R191	-81	242.51	3	601	731.62
L192	-79	081.24	3	601	237.35	R192	-81	182.03	3	601	706.53
L193	-79	088.88	3	601	130.89	R193	-81	130.31	3	601	686.29
L194	-79	103.23	3	600	948.30	R194	-81	067.60	3	601	663.67
L195	-79	105.28	3	600	893.66	R195	-81	015.58	3	601	645.80
L196	-79	096.45	3	600	827.82	R196	-80	952.83	3	601	625.74
L197	-79	083.75	3	600	784.16	R197	-80	889.89	3	601	607.30
L198	-79	080.85	3	600	773.95	R198	-80	837.17	3	601	593.26
L199	-79	052.88	3	600	720.78	R199	-80	773.89	3	601	577.37
L200	-79	010.58	3	600	666.68	R200	-80	720.59	3	601	562.10
L201	-78	959.40	3	600	618.69	R201	-80	656.08	3	601	552.11
L202	-78	902.42	3	600	587.99	R202	-80	602.17	3	601	542.20
L203	-78	845.02	3	600	564.89	R203	-80	534.97	3	601	531.53
L204	-78	736.42	3	600	527.43	R204	-80	469.98	3	601	522.36

Vel Sheet 22 Van of 29

P1047/18

PADRESERWE KOÖRDINATE / ROAD RESERVE CO-ORDINATES											
LINKERKANT/LEFT HAND SIDE					REGTERKANT/RIGHT HAND SIDE						
	Y		X	WG 25°		Y		X			
L205	-78	675.94	3	600	506.88	R205	-80	417.14	3	601	516.03
L206	-78	631.52	3	600	491.82	R206	-80	320.55	3	601	507.31
L207	-78	562.95	3	600	466.19	R207	-80	220.58	3	601	501.61
L208	-78	506.45	3	600	442.61	R208	-80	158.22	3	601	500.06
L209	-78	427.27	3	600	400.54	R209	-80	102.49	3	601	499.37
L210	-78	364.31	3	600	344.57	R210	-80	051.31	3	601	499.62
L211	-78	309.61	3	600	284.43	R211	-79	985.63	3	601	501.42
L212	-78	276.80	3	600	246.48	R212	-79	921.83	3	601	501.68
L213	-78	130.17	3	600	084.04	R213	-79	882.00	3	601	504.47
L214	-78	048.79	3	599	994.15	R214	-79	864.90	3	601	508.49
L215	-77	993.12	3	599	913.57	R215	-79	712.36	3	601	523.16
L216	-77	943.91	3	599	827.40	R216	-79	579.69	3	601	539.18
L217	-77	912.34	3	599	734.36	R217	-79	421.18	3	601	567.97
L218	-77	890.45	3	599	637.92	R218	-79	332.83	3	601	558.50
L219	-77	880.35	3	599	540.43	R219	-79	263.16	3	601	546.21
L220	-77	887.46	3	599	441.51	R220	-79	202.20	3	601	507.14
L221	-77	894.69	3	599	370.17	R221	-79	153.09	3	601	479.40
L222	-77	915.28	3	599	250.77	R222	-79	127.84	3	601	446.12
L223	-77	923.07	3	599	164.04	R223	-79	114.88	3	601	404.93
L224	-77	921.03	3	599	078.84	R224	-79	112.32	3	601	365.39
L225	-77	909.81	3	599	002.80	R225	-79	114.61	3	601	302.42
L226	-77	891.34	3	598	909.15	R226	-79	128.35	3	601	133.22
L227	-77	860.07	3	598	828.48	R227	-79	143.06	3	600	949.43
L228	-77	820.68	3	598	751.79	R228	-79	143.97	3	600	890.03
L229	-77	613.01	3	598	364.36	R229	-79	135.14	3	600	812.33
L230	-77	565.61	3	598	278.75	R230	-79	113.45	3	600	746.77
L231	-77	538.03	3	598	242.89	R231	-79	076.81	3	600	685.70
L232	-77	392.37	3	597	979.71	R232	-79	032.66	3	600	630.99
L233	-77	306.31	3	597	865.82	R233	-78	977.70	3	600	585.80
L234	-76	873.37	3	597	083.92	R234	-78	916.58	3	600	551.84
L235	-76	685.59	3	596	732.82	R235	-78	787.64	3	600	507.02
L236	-76	660.48	3	596	664.50	R236	-78	578.41	3	600	434.38
L237	-76	639.96	3	596	573.82	R237	-78	517.91	3	600	408.43
L238	-76	633.27	3	596	499.43	R238	-78	462.09	3	600	375.04
L239	-76	636.46	3	596	431.46	R239	-78	415.26	3	600	333.95
L240	-76	651.37	3	596	271.98	R240	-78	288.43	3	600	203.28
L241	-76	689.86	3	595	913.91	R241	-78	259.24	3	600	166.32
L242	-76	704.28	3	595	816.88	R242	-78	215.74	3	600	121.77
L243	-76	716.26	3	595	735.73	R243	-78	130.64	3	600	025.67
L244	-76	755.88	3	595	463.03	R244	-78	071.66	3	599	956.45
L245	-76	759.76	3	595	341.47	R245	-78	018.61	3	599	881.59
L246	-76	738.24	3	595	238.64	R246	-77	977.65	3	599	799.46
L247	-76	728.85	3	595	219.76	R247	-77	948.33	3	599	712.32
L248	-76	719.13	3	595	200.39	R248	-77	930.90	3	599	622.25
L249	-76	704.12	3	595	170.44	R249	-77	925.36	3	599	531.15
L250	-76	690.63	3	595	143.53	R250	-77	926.72	3	599	440.42
L251	-76	674.99	3	595	112.34	R251	-77	953.61	3	599	261.68
L252	-76	622.27	3	594	973.93	R252	-77	961.93	3	599	171.87
L253	-76	574.38	3	594	903.78	R253	-77	961.26	3	599	080.93
L254	-76	418.75	3	594	730.63	R254	-77	950.22	3	598	991.24
L255	-76	125.27	3	594	402.84	R255	-77	929.49	3	598	903.24

Vel  
Sheet

23

Van  
of

29

P1047/18

PADRESERWE KOÖRDINATE / ROAD RESERVE CO-ORDINATES					
LINKERKANT/LEFT HAND SIDE			REGTERKANT/RIGHT HAND SIDE		
	Y	X	WG 25°		X
L256	-75 947.35	3 594 206.44		R256	-77 898.97 3 598 817.80
L257	-75 898.77	3 594 127.13		R257	-77 854.49 3 598 739.48
L258	-75 245.32	3 593 403.89		R258	-77 598.08 3 598 272.82
L259	-75 207.82	3 593 383.26		R259	-77 575.02 3 598 222.03
L260	-75 173.03	3 593 344.63		R260	-77 300.40 3 597 721.19
L261	-75 155.83	3 593 304.84		R261	-77 246.97 3 597 638.35
L262	-75 035.61	3 593 171.78		R262	-76 814.81 3 596 857.47
L263	-75 003.84	3 593 144.07		R263	-76 798.42 3 596 823.55
L264	-74 909.21	3 593 039.29		R264	-76 754.77 3 596 735.14
L265	-74 822.07	3 592 942.84		R265	-76 732.85 3 596 681.80
L266	-74 795.32	3 592 905.84		R266	-76 705.53 3 596 589.60
L267	-74 518.57	3 592 599.53		R267	-76 693.44 3 596 519.14
L268	-74 398.17	3 592 473.61		R268	-76 691.63 3 596 485.45
L269	-74 101.09	3 592 144.95		R269	-76 694.42 3 596 430.66
L270	-73 929.46	3 591 954.99		R270	-76 709.73 3 596 307.20
L271	-73 757.34	3 591 734.61		R271	-76 720.58 3 596 260.19
L272	-73 541.67	3 591 440.37		R272	-76 726.31 3 596 214.12
L273	-73 476.72	3 591 345.09		R273	-76 723.98 3 596 192.30
L274	-72 797.80	3 590 419.12		R274	-76 767.14 3 595 844.37
L275	-72 638.76	3 590 202.26		R275	-76 767.57 3 595 840.85
L276	-72 357.13	3 589 818.41		R276	-76 789.00 3 595 750.30
L277	-72 351.64	3 589 825.52		R277	-76 796.66 3 595 688.13
L278	-72 227.69	3 589 652.68		R278	-76 800.41 3 595 572.15
L279	-71 948.69	3 589 274.97		R279	-76 806.97 3 595 501.45
L280	-71 854.39	3 589 153.61		R280	-76 808.33 3 595 456.68
L281	-71 819.95	3 589 126.39		R281	-76 807.11 3 595 402.70
L282	-71 817.48	3 589 122.45		R282	-76 804.53 3 595 362.19
L283	-71 806.25	3 589 104.47		R283	-76 794.44 3 595 288.93
L284	-71 806.83	3 589 077.07		R284	-76 781.69 3 595 226.29
L285	-71 741.08	3 588 955.61		R285	-76 778.13 3 595 215.09
L286	-71 703.07	3 588 858.29		R286	-76 765.21 3 595 172.09
L287	-71 686.84	3 588 810.54		R287	-76 758.02 3 595 148.16
L288	-71 662.07	3 588 709.50		R288	-76 733.28 3 595 080.28
L289	-71 382.00	3 587 734.71		R289	-76 710.42 3 595 031.33
L290	-71 356.41	3 587 638.03		R290	-76 679.20 3 594 973.74
L291	-71 328.90	3 587 541.88		R291	-76 675.06 3 594 967.08
L292	-71 299.06	3 587 446.45		R292	-76 646.53 3 594 916.31
L293	-71 193.84	3 587 091.99		R293	-76 582.22 3 594 830.59
L294	-71 083.27	3 586 691.31		R294	-76 532.88 3 594 782.16
L295	-70 984.62	3 586 366.60		R295	-74 907.86 3 592 983.27
L296	-70 729.24	3 585 470.01		R296	-74 132.64 3 592 126.62
L297	-70 506.88	3 584 698.97		R297	-73 995.96 3 591 973.46
L298	-70 484.70	3 584 621.21		R298	-73 946.29 3 591 915.74
L299	-70 437.44	3 584 432.98		R299	-73 876.76 3 591 830.98
L300	-70 419.31	3 584 350.00		R300	-73 835.08 3 591 777.90
L301	-70 409.84	3 584 306.45		R301	-73 803.03 3 591 736.41
L302	-70 396.64	3 584 207.32		R302	-72 816.11 3 590 391.28
L303	-70 353.53	3 583 980.40		R303	-72 666.07 3 590 186.49
L304	-70 304.23	3 583 754.82		R304	-72 494.65 3 589 953.01
L305	-70 279.40	3 583 670.00		R305	-72 470.19 3 589 914.63
L306	-70 254.66	3 583 573.80		R306	-72 408.07 3 589 830.02

Vel  
Sheet24  
of 29

P1047/18

PADRESERWE KOÖRDINATE / ROAD RESERVE CO-ORDINATES											
LINKERKANT/LEFT HAND SIDE					REGTERKANT/RIGHT HAND SIDE						
	Y		X	WG 25°		Y		X			
L307	-70	250.20	3	583	405.99	R307	-72	376.84	3	589	792.55
L308	-70	251.66	3	583	403.39	R308	-72	270.36	3	589	646.98
L309	-70	234.45	3	583	273.31	R309	-71	873.66	3	589	105.60
L310	-70	238.54	3	583	109.38	R310	-71	817.20	3	589	012.62
L311	-70	252.53	3	583	004.14	R311	-71	787.26	3	588	953.81
L312	-70	280.93	3	582	937.92	R312	-71	752.00	3	588	873.14
L313	-70	294.09	3	582	861.52	R313	-71	731.66	3	588	819.43
L314	-70	317.05	3	582	754.90	R314	-71	536.37	3	588	138.96
L315	-70	319.86	3	582	730.32	R315	-71	332.00	3	587	433.97
L316	-70	324.79	3	582	629.53	R316	-71	223.81	3	587	060.31
L317	-70	324.12	3	582	574.39	R317	-71	117.38	3	586	692.72
L318	-70	320.86	3	582	505.28	R318	-71	117.60	3	586	688.33
L319	-70	318.02	3	582	454.06	R319	-71	117.09	3	586	686.33
L320	-70	312.86	3	582	411.78	R320	-71	102.03	3	586	634.19
L321	-70	301.74	3	582	339.09	R321	-71	099.38	3	586	630.39
L322	-70	262.72	3	582	083.72	R322	-70	951.02	3	586	116.78
L323	-70	213.39	3	581	785.28	R323	-70	767.96	3	585	479.11
L324	-70	193.57	3	581	757.39	R324	-70	541.98	3	584	694.43
L325	-70	189.58	3	581	733.24	R325	-70	513.28	3	584	594.40
L326	-70	199.14	3	581	696.40	R326	-70	486.66	3	584	493.13
L327	-70	182.08	3	581	581.01	R327	-70	474.22	3	584	440.04
L328	-70	087.58	3	580	970.15	R328	-70	458.85	3	584	364.92
L329	-70	056.28	3	580	760.29	R329	-70	442.70	3	584	281.44
L330	-70	046.61	3	580	693.42	R330	-70	420.60	3	584	162.78
L331	-70	042.04	3	580	647.03	R331	-70	392.73	3	584	018.22
L332	-70	035.87	3	580	548.68	R332	-70	310.63	3	583	591.80
L333	-70	035.14	3	580	524.00	R333	-70	293.98	3	583	531.65
L334	-70	034.89	3	580	495.88	R334	-70	288.38	3	583	470.87
L335	-70	035.34	3	580	425.15	R335	-70	285.64	3	583	403.97
L336	-70	036.69	3	580	384.77	R336	-70	280.24	3	583	271.76
L337	-70	041.24	3	580	315.80	R337	-70	278.72	3	583	228.11
L338	-70	047.19	3	580	264.03	R338	-70	278.75	3	583	184.24
L339	-70	137.73	3	579	562.66	R339	-70	284.04	3	583	118.66
L340	-70	125.05	3	579	543.59	R340	-70	304.62	3	583	023.40
L341	-70	126.60	3	579	531.13	R341	-70	317.16	3	582	947.86
L342	-70	143.16	3	579	519.76	R342	-70	330.58	3	582	866.53
L343	-70	214.65	3	578	960.84	R343	-70	344.01	3	582	785.30
L344	-70	237.60	3	578	786.19	R344	-70	351.54	3	582	731.23
L345	-70	256.45	3	578	637.35	R345	-70	355.25	3	582	685.95
L346	-70	281.54	3	578	451.83	R346	-70	357.96	3	582	636.52
L347	-70	300.57	3	578	300.24	R347	-70	358.87	3	582	603.32
L348	-70	320.69	3	578	141.51	R348	-70	357.88	3	582	548.64
L349	-70	330.91	3	578	063.00	R349	-70	353.38	3	582	483.01
L350	-70	332.65	3	578	012.01	R350	-70	343.14	3	582	403.18
L351	-70	330.60	3	577	934.28	R351	-70	330.37	3	582	319.00
L352	-70	326.68	3	577	885.65	R352	-70	314.66	3	582	212.05
L353	-70	312.05	3	577	814.49	R353	-70	208.48	3	581	527.32
L354	-70	301.51	3	577	770.96	R354	-70	201.61	3	581	482.71
L355	-70	281.30	3	577	699.34	R355	-70	133.87	3	581	039.27
L356	-70	271.63	3	577	672.52	R356	-70	084.59	3	580	714.98
L357	-70	263.27	3	577	651.82	R357	-70	077.41	3	580	650.16

Vel Sheet	25	Van of	29	P1047/18
--------------	----	-----------	----	----------



PADRESERWE KOÖRDINATE / ROAD RESERVE CO-ORDINATES											
LINKERKANT/LEFT HAND SIDE					REGTERKANT/RIGHT HAND SIDE						
	Y		X	WG 25°		Y		X			
L358	-70	238.72	3	577	597.95	R358	-70	074.75	3	580	618.19
L359	-70	210.96	3	577	545.90	R359	-70	070.00	3	580	528.87
L360	-70	175.64	3	577	490.46	R360	-70	069.52	3	580	446.98
L361	-70	156.80	3	577	463.37	R361	-70	071.94	3	580	379.50
L362	-70	119.85	3	577	417.21	R362	-70	076.34	3	580	319.07
L363	-70	080.17	3	577	373.13	R363	-70	081.70	3	580	266.12
L364	-70	006.11	3	577	298.54	R364	-70	146.12	3	579	762.63
L365	-69	888.55	3	577	180.50	R365	-70	172.71	3	579	556.77
L366	-69	850.04	3	577	161.58	R366	-70	208.42	3	579	280.36
L367	-69	827.43	3	577	138.87	R367	-70	225.65	3	579	208.46
L368	-69	808.28	3	577	099.89	R368	-70	260.98	3	579	046.45
L369	-69	772.94	3	577	064.40	R369	-70	282.41	3	578	873.04
L370	-69	766.44	3	577	057.88	R370	-70	306.58	3	578	531.90
L371	-69	750.14	3	577	041.51	R371	-70	351.51	3	578	202.86
L372	-69	735.53	3	577	026.83	R372	-70	361.75	3	578	114.75
L373	-69	726.89	3	577	018.16	R373	-70	365.20	3	578	032.62
L374	-69	722.62	3	577	013.87	R374	-70	365.12	3	577	970.09
L375	-69	633.44	3	576	924.32	R375	-70	362.33	3	577	904.43
L376	-69	569.16	3	576	846.78	R376	-70	357.10	3	577	861.80
L377	-69	534.78	3	576	797.00	R377	-70	351.48	3	577	827.04
L378	-69	512.38	3	576	759.43	R378	-70	346.34	3	577	801.37
L379	-69	456.09	3	576	658.12	R379	-70	341.47	3	577	781.48
L380	-69	269.86	3	576	223.87	R380	-70	330.60	3	577	742.14
L381	-69	214.62	3	576	095.34	R381	-70	311.83	3	577	685.67
L382	-69	198.38	3	576	055.22	R382	-70	293.76	3	577	637.88
L383	-69	171.80	3	575	979.46	R383	-70	280.48	3	577	606.16
L384	-69	167.39	3	575	958.84	R384	-70	249.21	3	577	543.30
L385	-69	087.33	3	575	744.31	R385	-70	223.49	3	577	500.58
L386	-69	045.60	3	575	592.73	R386	-70	201.34	3	577	466.62
L387	-69	018.24	3	575	462.60	R387	-70	107.31	3	577	348.78
L388	-68	985.67	3	575	266.12	R388	-70	052.87	3	577	294.67
L389	-68	862.17	3	574	795.14	R389	-70	040.21	3	577	260.99
L390	-68	785.55	3	574	501.52	R390	-70	030.37	3	577	251.04
L391	-68	751.54	3	574	370.37	R391	-69	989.00	3	577	231.29
L392	-68	732.19	3	574	296.27	R392	-69	835.32	3	577	078.72
L393	-68	714.22	3	574	222.28	R393	-69	800.42	3	577	048.12
L394	-68	702.30	3	574	160.25	R394	-69	786.72	3	577	034.49
L395	-68	685.18	3	574	058.94	R395	-69	766.61	3	577	014.48
L396	-68	666.71	3	573	950.30	R396	-69	750.95	3	576	998.89
L397	-68	571.76	3	573	393.12	R397	-69	746.47	3	576	994.43
L398	-68	537.31	3	573	183.88	R398	-69	743.84	3	576	991.82
L399	-68	483.36	3	572	899.74	R399	-69	678.17	3	576	926.47
L400	-68	471.30	3	572	810.39	R400	-69	638.24	3	576	882.78
L401	-68	465.83	3	572	704.67	R401	-69	619.63	3	576	860.23
L402	-68	464.52	3	572	665.20	R402	-69	575.33	3	576	801.26
L403	-68	462.67	3	572	612.36	R403	-69	543.83	3	576	751.88
L404	-68	462.84	3	572	591.04	R404	-69	498.97	3	576	671.66
L405	-68	469.05	3	572	522.83	R405	-69	359.97	3	576	347.87
L406	-68	470.71	3	572	481.65	R406	-69	311.06	3	576	228.99
L407	-68	474.53	3	572	459.05	R407	-69	271.81	3	576	142.31
L408	-68	481.77	3	572	375.32	R408	-69	276.57	3	576	130.15

Vel  
Sheet

26

Van  
of

29

P1047/18

PADRESERWE KOÖRDINATE / ROAD RESERVE CO-ORDINATES					
LINKERKANT/LEFT HAND SIDE			REGTERKANT/RIGHT HAND SIDE		
	Y	X	WG 25°	Y	X
L409	-68 489.95	3 572 318.69	R409	-69 277.15	3 576 128.68
L410	-68 517.80	3 572 157.35	R410	-69 275.27	3 576 121.64
L411	-68 538.10	3 572 072.04	R411	-69 251.51	3 575 958.21
L412	-68 548.88	3 572 009.43	R412	-69 246.66	3 575 942.48
L413	-68 568.17	3 571 917.32	R413	-69 223.04	3 575 947.98
L414	-68 670.73	3 571 496.40	R414	-69 213.83	3 575 950.12
L415	-68 678.59	3 571 461.13	R415	-69 189.75	3 575 917.47
L416	-68 755.06	3 571 100.52	R416	-69 079.86	3 575 499.05
L417	-68 763.32	3 571 050.12	R417	-68 880.03	3 574 732.74
L418	-68 765.87	3 571 034.38	R418	-68 809.96	3 574 474.98
L419	-68 775.30	3 570 923.45	R419	-68 780.18	3 574 363.87
L420	-68 779.52	3 570 831.25	R420	-68 761.68	3 574 292.96
L421	-68 778.92	3 570 743.70	R421	-68 744.23	3 574 217.22
L422	-68 773.05	3 570 614.46	R422	-68 732.13	3 574 155.93
L423	-68 751.87	3 570 078.47	R423	-68 715.83	3 574 060.99
L424	-68 740.50	3 569 799.04	R424	-68 696.64	3 573 945.19
L425	-68 735.56	3 569 710.05	R425	-68 601.28	3 573 384.10
L426	-68 730.55	3 569 619.07	R426	-68 526.43	3 572 937.41
L427	-68 717.67	3 569 533.04	R427	-68 511.40	3 572 837.34
L428	-68 687.62	3 569 428.37	R428	-68 504.27	3 572 749.06
L429	-68 674.21	3 569 409.15	R429	-68 502.12	3 572 690.12
L430	-68 665.38	3 569 378.40	R430	-68 502.02	3 572 664.22
L431	-68 666.59	3 569 354.23	R431	-68 506.65	3 572 471.33
L432	-68 610.60	3 569 145.72	R432	-68 509.14	3 572 435.67
L433	-68 583.99	3 569 070.53	R433	-68 514.83	3 572 378.29
L434	-68 540.16	3 568 929.48	R434	-68 521.70	3 572 324.62
L435	-68 536.52	3 568 910.37	R435	-68 535.82	3 572 248.78
L436	-68 395.92	3 568 458.24	R436	-68 554.69	3 572 164.49
L437	-68 393.67	3 568 458.52	R437	-68 573.47	3 572 084.89
L438	-68 260.37	3 568 032.71	R438	-68 583.22	3 572 035.10
L439	-68 135.90	3 567 633.17	R439	-68 607.45	3 571 919.17
L440	-68 035.01	3 567 395.23	R440	-68 711.99	3 571 458.56
L441	-67 891.64	3 567 200.06	R441	-68 729.79	3 571 374.98
L442	-67 883.60	3 567 191.11	R442	-68 747.37	3 571 294.30
L443	-67 850.29	3 567 154.42	R443	-68 775.91	3 571 179.54
L444	-67 782.38	3 567 090.34	R444	-68 796.56	3 571 055.84
L445	-67 671.09	3 566 989.54	R445	-68 809.36	3 570 925.00
L446	-67 388.85	3 566 735.47	R446	-68 808.01	3 570 894.17
L447	-67 225.27	3 566 588.21	R447	-68 810.19	3 570 831.51
L448	-67 079.03	3 566 486.72	R448	-68 812.65	3 570 794.59
L449	-66 966.26	3 566 426.44	R449	-68 809.73	3 570 741.20
L450	-66 859.36	3 566 373.86	R450	-68 809.35	3 570 731.76
L451	-66 768.27	3 566 336.41	R451	-68 804.93	3 570 620.52
L452	-66 675.09	3 566 304.53	R452	-68 800.01	3 570 424.06
L453	-66 580.19	3 566 278.24	R453	-68 796.14	3 570 399.27
L454	-66 363.57	3 566 228.29	R454	-68 779.74	3 569 981.86
L455	-66 132.46	3 566 175.00	R455	-68 771.31	3 569 786.22
L456	-65 071.49	3 565 930.37	R456	-68 770.24	3 569 719.99
L457	-64 818.59	3 565 872.06	R457	-68 761.07	3 569 613.79
L458	-64 783.25	3 565 863.91	R458	-68 747.33	3 569 522.77
L459	-64 531.97	3 565 805.96	R459	-68 744.21	3 569 505.02

Vel  
Sheet

27

Van  
of

29

P1047/18

PADRESERWE KOÖRDINATE / ROAD RESERVE CO-ORDINATES					
LINKERKANT/LEFT HAND SIDE			REGTERKANT/RIGHT HAND SIDE		
	Y	X	WG 25°	Y	X
L460	-64 469.70	3 565	791.60	R460	-68 730.47 3 569 432.87
L461	-64 466.06	3 565	787.51	R461	-68 709.59 3 569 356.82
L462	-64 221.72	3 565	751.86	R462	-68 597.23 3 568 996.50
L463	-64 163.99	3 565	742.47	R463	-68 606.25 3 568 975.03
L464	-64 180.75	3 565	704.39	R464	-68 600.21 3 568 955.68
L465	-64 120.00	3 565	667.83	R465	-68 579.13 3 568 938.45
L466	-64 021.07	3 565	590.35	R466	-68 570.90 3 568 912.05
L467	-63 920.51	3 565	493.57	R467	-68 555.37 3 568 861.43
L468	-63 914.99	3 565	486.40	R468	-68 426.76 3 568 454.58
L469	-63 888.52	3 565	447.66	R469	-68 292.64 3 568 019.64
L470	-63 834.00	3 565	367.87	R470	-68 189.25 3 567 684.11
L471	-63 788.97	3 565	271.03	R471	-68 159.43 3 567 603.05
L472	-63 761.17	3 565	178.35	R472	-68 099.96 3 567 464.27
L473	-63 743.10	3 565	063.48	R473	-68 052.34 3 567 373.27
L474	-63 742.61	3 564	967.00	R474	-67 996.04 3 567 282.89
L475	-63 754.16	3 564	798.67	R475	-67 976.56 3 567 245.47
L476	-63 768.90	3 564	596.96	R476	-67 917.04 3 567 176.18
L477	-63 772.93	3 564	541.75	R477	-67 867.22 3 567 127.85
L478	-63 773.32	3 564	441.37	R478	-67 818.10 3 567 080.98
L479	-63 764.68	3 564	350.62	R479	-67 688.88 3 566 964.16
L480	-63 732.46	3 564	240.39	R480	-67 405.90 3 566 709.06
L481	-63 724.42	3 564	194.13	R481	-67 255.92 3 566 573.86
L482	-63 688.21	3 564	143.50	R482	-67 200.60 3 566 528.12
L483	-63 694.41	3 564	121.16	R483	-67 105.70 3 566 456.73
L484	-63 625.34	3 563	921.91	R484	-67 055.16 3 566 423.14
L485	-63 597.67	3 563	855.37	R485	-66 774.49 3 566 285.71
L486	-63 568.24	3 563	793.62	R486	-66 689.83 3 566 256.74
L487	-63 530.58	3 563	729.49	R487	-66 592.02 3 566 229.67
L488	-63 505.02	3 563	685.76	R488	-66 374.78 3 566 179.58
L489	-63 426.96	3 563	581.98	R489	-66 143.66 3 566 126.28
L490	-63 299.82	3 563	445.38	R490	-65 082.68 3 565 881.64
L491	-63 137.56	3 563	283.97	R491	-64 960.24 3 565 853.41
L492	-62 953.07	3 563	098.86	R492	-64 930.99 3 565 846.66
L493	-62 701.30	3 562	846.22	R493	-64 824.61 3 565 822.13
L494	-62 534.46	3 562	680.88	R494	-64 615.54 3 565 773.94
L495	-62 463.33	3 562	611.61	R495	-64 578.44 3 565 753.69
L496	-62 373.53	3 562	536.52	R496	-64 519.24 3 565 753.33
L497	-62 320.52	3 562	493.13	R497	-64 496.17 3 565 753.19
L498	-62 247.04	3 562	445.68	R498	-64 366.51 3 565 729.30
L499	-62 188.88	3 562	413.12	R499	-64 287.68 3 565 709.56
L500	-62 083.15	3 562	363.89	R500	-64 259.66 3 565 700.25
L501	-61 901.37	3 562	294.31	R501	-64 260.97 3 565 690.75
				R502	-64 245.24 3 565 688.96
				R503	-64 218.59 3 565 675.22
				R504	-64 199.24 3 565 665.22
				R505	-64 198.14 3 565 666.20
				R506	-64 168.27 3 565 651.15
				R507	-64 116.79 3 565 619.95
				R508	-64 057.79 3 565 581.86
				R509	-63 997.71 3 565 529.89
				R510	-63 939.61 3 565 466.25

Vel Sheet	28	Van of	29	P1047/18
--------------	----	-----------	----	----------

PADRESERWE KOÖRDINATE / ROAD RESERVE CO-ORDINATES					
LINKERKANT/LEFT HAND SIDE			REGTERKANT/RIGHT HAND SIDE		
Y	X	WG 25°	Y	X	
			R511	-63 918.33	3 565 441.28
			R512	-63 860.43	3 565 354.04
			R513	-63 816.47	3 565 256.62
			R514	-63 791.78	3 565 174.24
			R515	-63 776.35	3 565 084.85
			R516	-63 774.39	3 564 965.89
			R517	-63 785.42	3 564 805.08
			R518	-63 797.17	3 564 593.21
			R519	-63 804.28	3 564 464.87
			R520	-63 798.29	3 564 370.33
			R521	-63 778.14	3 564 274.83
			R522	-63 758.97	3 564 217.09
			R523	-63 742.92	3 564 190.50
			R524	-63 732.02	3 564 135.12
			R525	-63 656.72	3 563 914.45
			R526	-63 623.85	3 563 802.10
			R527	-63 594.79	3 563 776.09
			R528	-63 576.47	3 563 742.64
			R529	-63 531.71	3 563 668.66
			R530	-63 435.17	3 563 538.85
			R531	-63 322.73	3 563 423.25
			R532	-63 158.44	3 563 255.69
			R533	-63 006.73	3 563 104.02
			R534	-62 764.61	3 562 863.44
			R535	-62 563.44	3 562 661.46
			R536	-62 487.07	3 562 580.13
			R537	-62 414.96	3 562 519.00
			R538	-62 355.15	3 562 476.98
			R539	-62 303.89	3 562 442.48
			R540	-62 255.20	3 562 412.01
			R541	-62 204.80	3 562 383.28
			R542	-62 155.48	3 562 359.00
			R543	-62 095.94	3 562 332.94
			R544	-61 855.72	3 562 240.08

Vel Sheet	29	Van of	29	P1047/18
--------------	----	-----------	----	----------