

DEPARTMENT OF TRANSPORT

NO. 416

15 MARCH 2019

**THE SOUTH AFRICAN NATIONAL ROADS
AGENCY SOC LIMITED**

Registration No: 1998/009584/30

DECLARATION AMENDMENT OF NATIONAL ROAD R501 SECTION 2

AMENDMENT OF DECLARATION No. 305 OF 2018.

By virtue of section 40(1)(b) of the South African National Roads Agency Limited and the National Roads Act 1998 (Act No. 7 of 1998), I hereby amend Declaration No. 305 of 2018 by substituting paragraph B(1) of the Schedule, being the descriptive declaration of the route from the Vaal River up to the junction with Provincial Road P89 Section 2, south of Potchefstroom, with the accompanying sheets 1 to 6 of Plan No. P1055/18. The Declaration includes the Inter-Provincial Bridge.

(National Road R501 Section 2: Vaal River – Potchefstroom)**MINISTER OF TRANSPORT**

DEPARTEMENT VAN VERVOER

NO. 416

15 MAART 2019

**DIE SUID-AFRIKAANSE NASIONALE
PADAGENTSKAP MSB BEPERK**

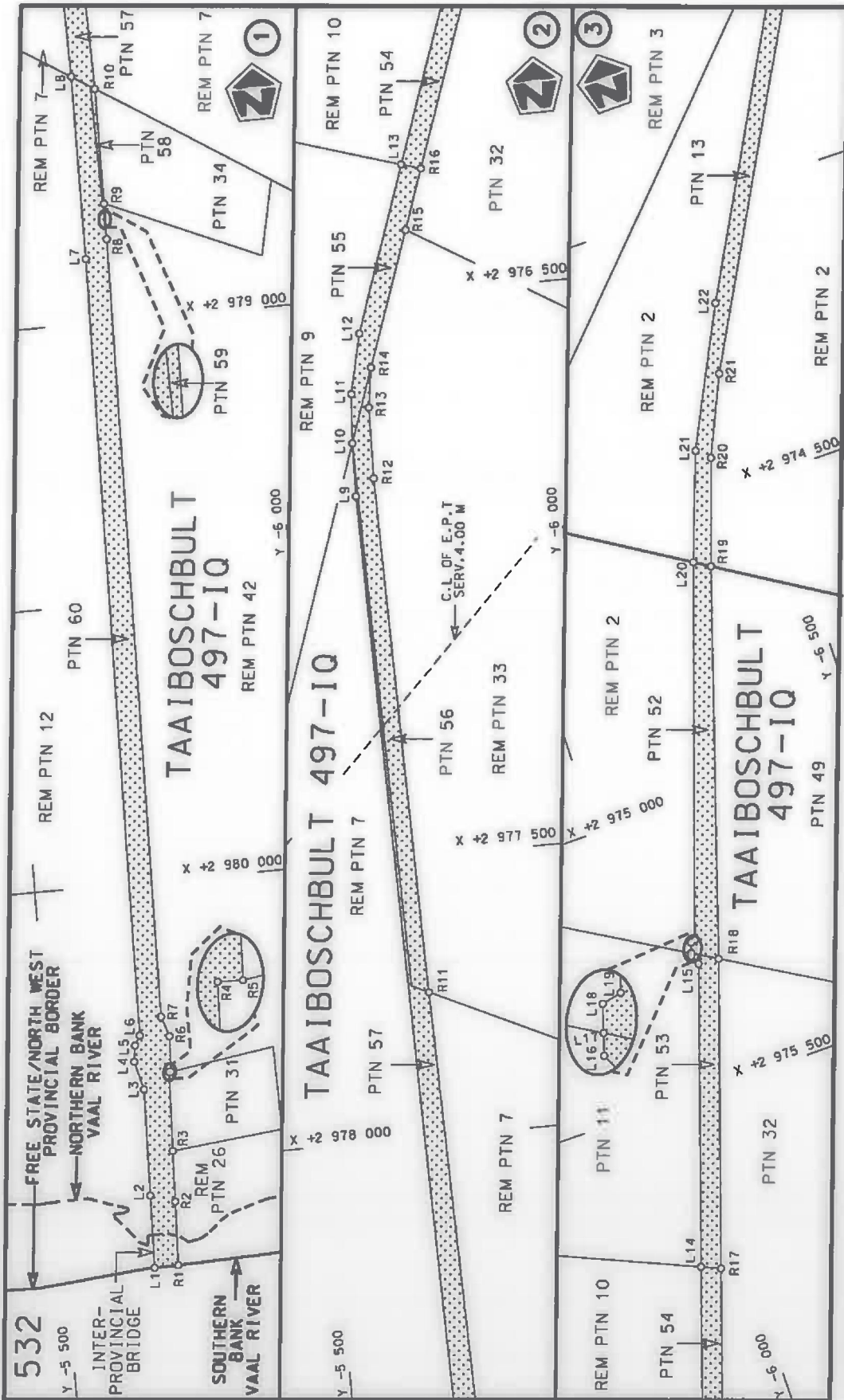
Registrasie No: 1998/009584/30

VERKLARING WYSIGING VAN NASIONALE PAD R501 SEKSIE 2

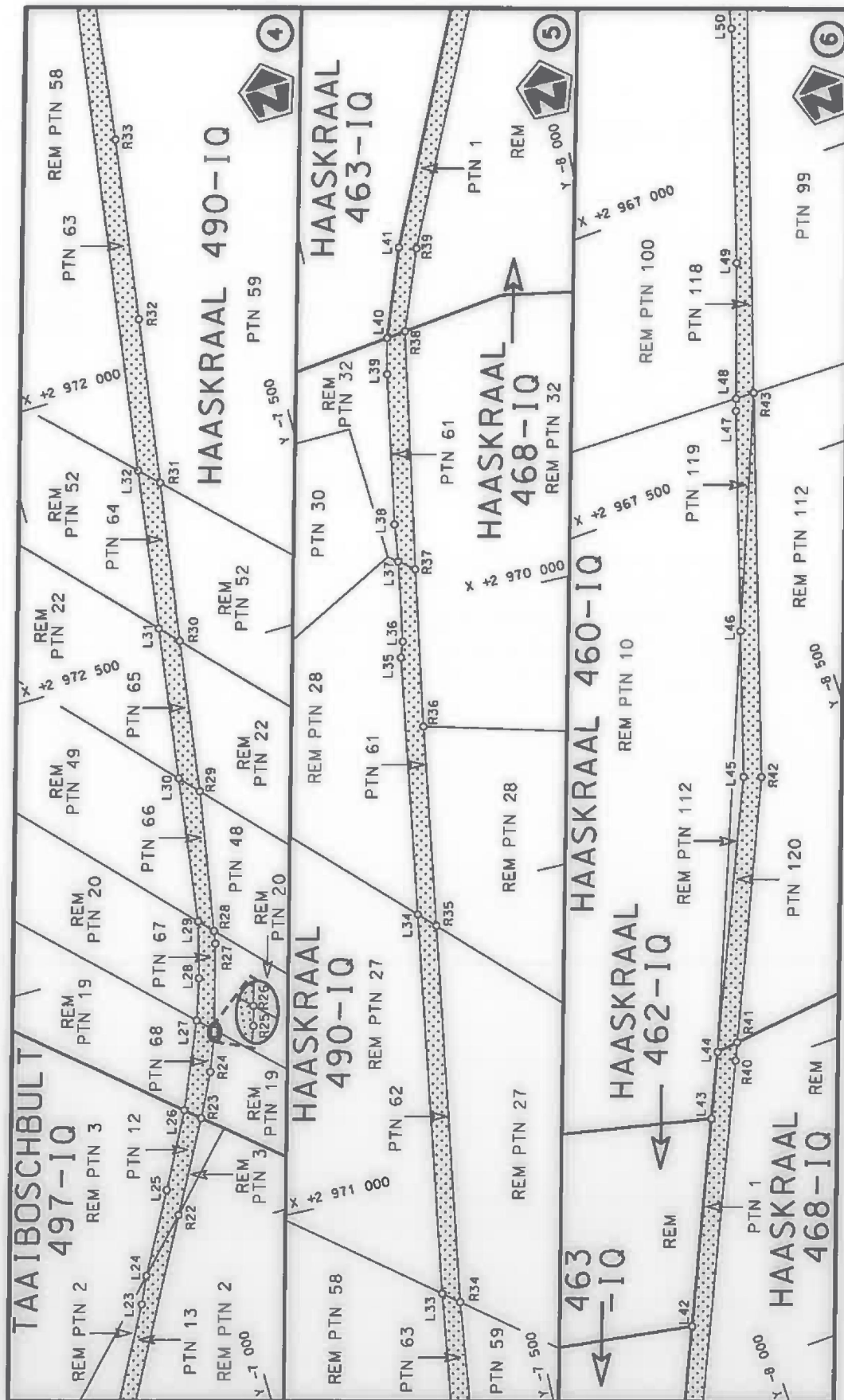
WYSIGING VAN VERKLARING No. 305 VAN 2018.

Kragtens Artikel 40(1)(b) van die Suid-Afrikaanse Nasionale Padagentskap Beperk en Nasionale Paaie Wet 1998 (Wet No. 7 van 1998), wysig ek hiermee Verklaring No. 305 van 2018 deur paragraaf B(I) van die Skedule te vervang, synde die gedeelte van die beskrywende verklaring van die pad vanaf die Vaal Rivier tot by die aansluiting met Provinsiale Pad P89 Seksie 2 suid van Potchefstroom, met bygaande velle 1 tot 6 van Plan No. P1055/18. Die Verklaring sluit die Interprovinsiale Brug in.

(Nasionale Pad R501 Seksie 2: Vaalrivier – Potchefstroom)**MINISTER VAN VERVOER**



<p>Die Suid Afrikaanse Nasionale Padagentskap MSB Bpk The South African National Roads Agency SOC Ltd</p>	<p>Die figuur getoon The figure shown</p>	<p>stelt die padreserwe voor van 'n gedeelte represents the road reserve of a portion van Nasionale Roete R501 of National Route Section</p>	<p>Vel Sheet 1 of 6 Plan P1055/18</p>
<p>2</p>		<p>R501 Section</p>	



Vel
Sheet 2
of 6

Plan P1055/18

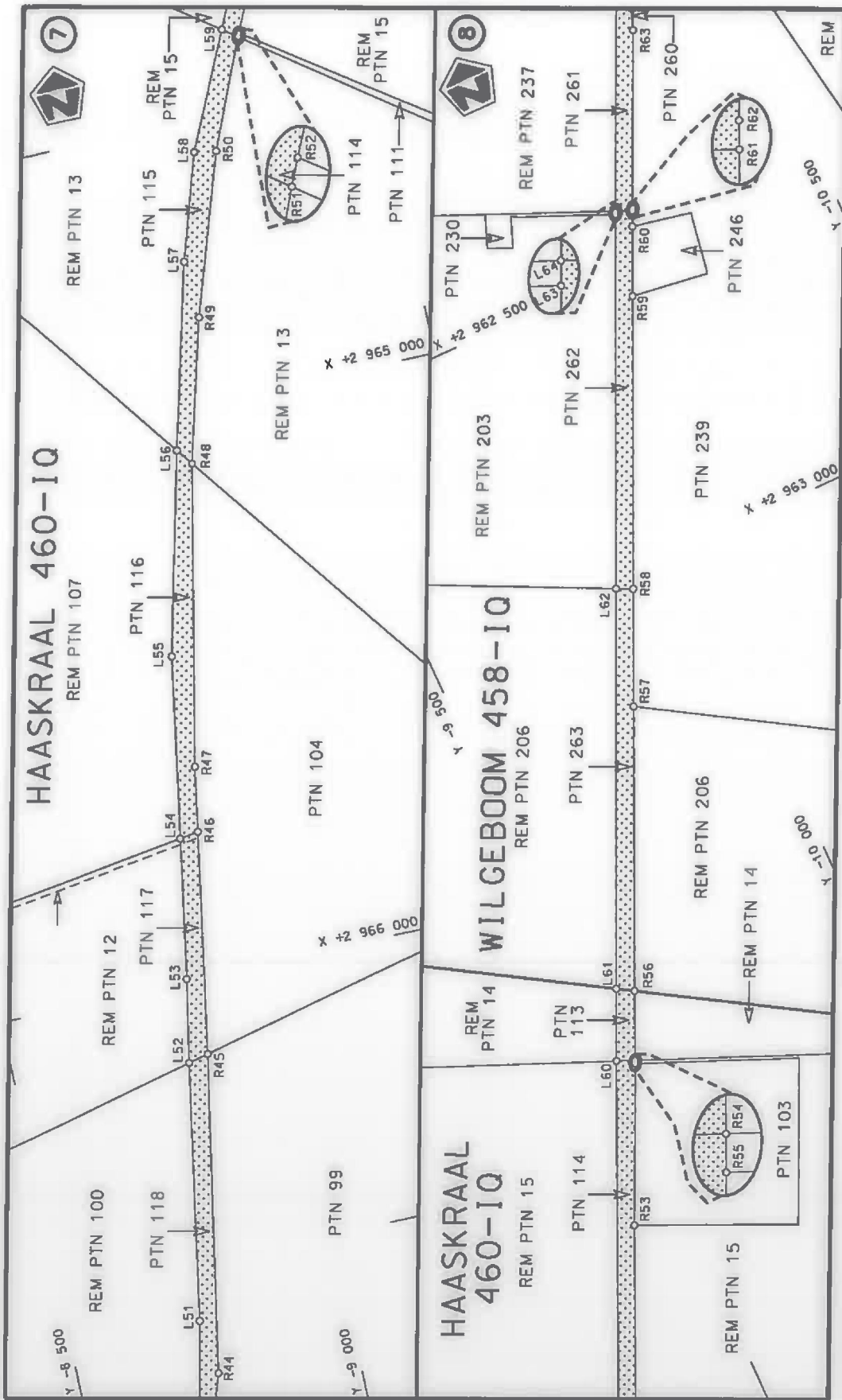
stelt die padreserwe voor van 'n gedeelte
represents the road reserve of a portion
van Nasionale Roete R501
Seksie
Section

2

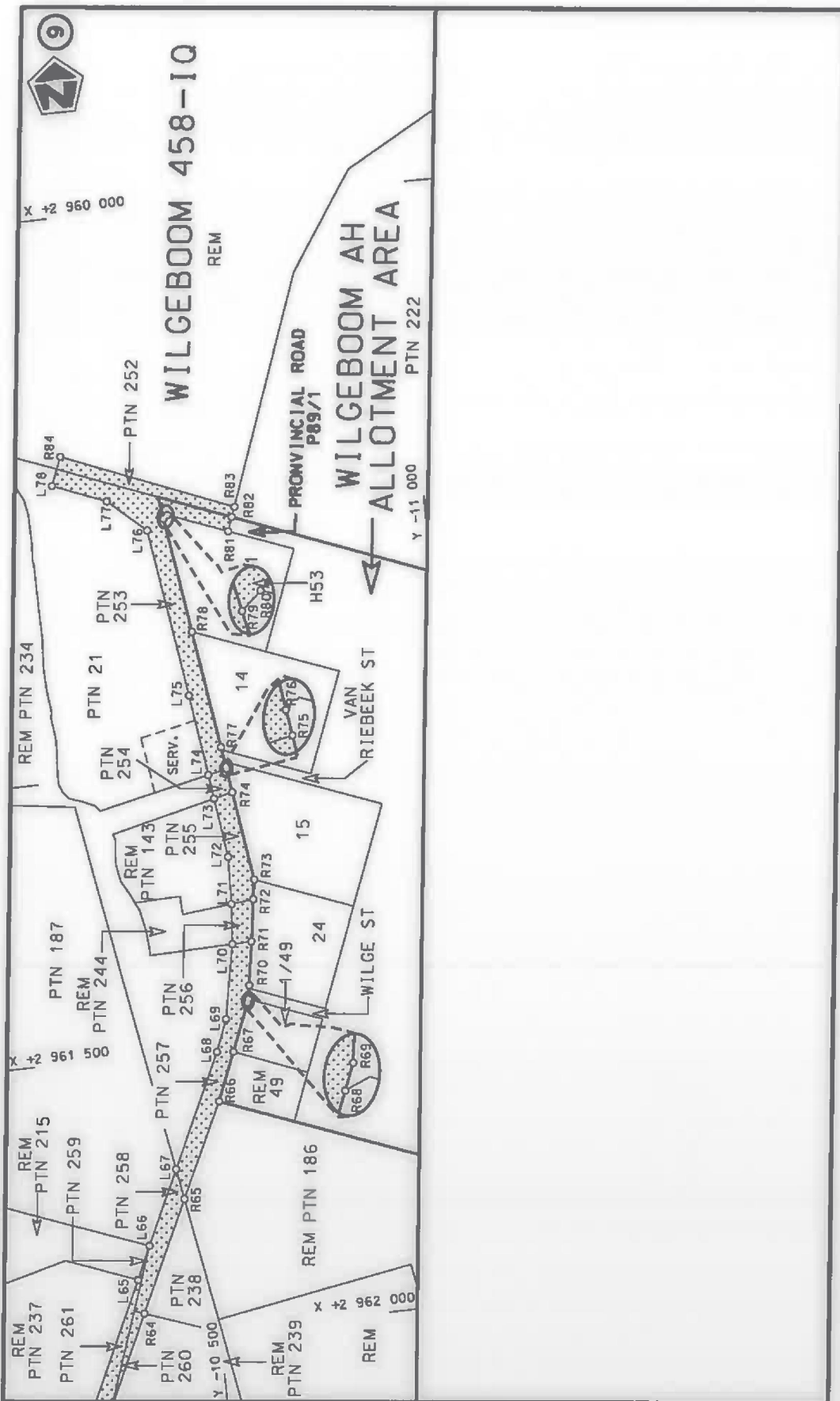


Die figuur getoon
The figure shown

Die Suid Afrikaanse Nasionale Padagentskap MSB Bpk
The South African National Roads Agency SOC Ltd



<p>Die Suid Afrikaanse Nasionale Padagentskap MSB Bpk The South African National Roads Agency SOC Ltd</p>	<p>Die figuur getoon The figure shown</p>		<p>stel die padreserwe voor van 'n gedeelte represents the road reserve of a portion van Nasionale Roete R501 Sektie of National Route Section</p>	<p>Vel Sheet 3 of 6 Plan P1055/18</p>
---	---	--	--	---



Vel Sheet	4	van of	6
Plan	P1055/18		

steldie padreserwe voor van 'n gedeelte represents the road reserve of a portion van Nasionale Roete R501 Seksie Section 2

Die figuur getoon The figure shown

Die Suid Afrikaanse Nasionale Padagentskap MSB Bpk The South African National Roads Agency SOC Ltd

PADRESERWE KOÖRDINATE / ROAD RESERVE CO-ORDINATES							
LINKERKANT/LEFT HAND SIDE			REGTERKANT/RIGHT HAND SIDE				
	Y	X	WG 27°	Y	X		
L1	-5 656.46	2 980	685.62	R1	-5 698.84	2 980	684.71
L2	-5 659.32	2 980	556.74	R2	-5 702.73	2 980	571.46
L3	-5 663.53	2 980	367.02	R3	-5 705.83	2 980	481.14
L4	-5 650.59	2 980	316.29	R4	-5 710.68	2 980	340.14
L5	-5 654.23	2 980	287.64	R5	-5 714.65	2 980	340.26
L6	-5 664.04	2 980	270.64	R6	-5 716.57	2 980	276.78
L7	-5 681.01	2 978	885.36	R7	-5 704.65	2 980	240.94
L8	-5 680.65	2 978	560.78	R8	-5 720.24	2 978	853.84
L9	-5 638.59	2 976	851.26	R9	-5 720.71	2 978	790.42
L10	-5 639.71	2 976	756.54	R10	-5 720.47	2 978	585.93
L11	-5 645.06	2 976	669.08	R11	-5 695.41	2 977	742.69
L12	-5 667.69	2 976	563.35	R12	-5 672.47	2 976	822.00
L13	-5 765.20	2 976	270.59	R13	-5 674.15	2 976	695.92
L14	-5 924.42	2 975	794.62	R14	-5 683.65	2 976	625.26
L15	-6 095.49	2 975	282.23	R15	-5 763.36	2 976	387.14
L16	-6 087.57	2 975	264.90	R16	-5 798.93	2 976	280.88
L17	-6 089.18	2 975	259.80	R17	-5 956.88	2 975	809.03
L18	-6 094.88	2 975	241.59	R18	-6 132.12	2 975	285.51
L19	-6 102.85	2 975	239.82	R19	-6 345.59	2 974	619.83
L20	-6 318.01	2 974	602.50	R20	-6 407.75	2 974	437.44
L21	-6 385.88	2 974	416.05	R21	-6 469.92	2 974	300.55
L22	-6 504.25	2 974	179.64	R22	-6 931.74	2 973	456.57
L23	-6 825.23	2 973	591.94	R23	-7 016.79	2 973	301.56
L24	-6 846.87	2 973	545.12	R24	-7 054.53	2 973	226.84
L25	-6 923.23	2 973	408.10	R25	-7 079.61	2 973	163.98
L26	-6 991.49	2 973	279.66	R26	-7 081.49	2 973	157.25
L27	-7 055.79	2 973	131.96	R27	-7 124.27	2 973	009.15
L28	-7 079.81	2 973	060.63	R28	-7 127.91	2 972	986.79
L29	-7 105.37	2 972	962.82	R29	-7 170.20	2 972	740.07
L30	-7 139.85	2 972	707.36	R30	-7 206.67	2 972	472.14
L31	-7 176.65	2 972	440.20	R31	-7 248.05	2 972	191.42
L32	-7 215.45	2 972	159.27	R32	-7 288.22	2 971	900.31
L33	-7 348.10	2 971	198.60	R33	-7 332.65	2 971	581.27
L34	-7 450.31	2 970	528.70	R34	-7 376.11	2 971	220.43
L35	-7 518.67	2 970	075.03	R35	-7 478.21	2 970	555.77
L36	-7 527.82	2 970	048.00	R36	-7 531.52	2 970	203.84
L37	-7 550.20	2 969	907.13	R37	-7 576.77	2 969	927.16
L38	-7 557.56	2 969	840.99	R38	-7 648.75	2 969	509.71
L39	-7 601.68	2 969	577.13	R39	-7 699.85	2 969	370.31
L40	-7 615.35	2 969	514.30	R40	-8 110.63	2 968	477.34
L41	-7 669.67	2 969	361.91	R41	-8 123.98	2 968	447.96
L42	-7 881.34	2 968	898.79	R42	-8 320.10	2 968	016.22
L43	-8 035.84	2 968	560.60	R43	-8 531.18	2 967	365.26
L44	-8 085.38	2 968	452.16	R44	-8 748.48	2 966	696.88
L45	-8 290.02	2 968	005.03	R45	-8 848.00	2 966	135.05
L46	-8 370.18	2 967	757.80	R46	-8 912.79	2 965	743.54
L47	-8 490.59	2 967	385.24	R47	-8 931.80	2 965	628.66
L48	-8 497.96	2 967	364.30	R48	-9 037.80	2 965	098.89
L49	-8 577.83	2 967	137.13	R49	-9 103.36	2 964	846.75
L50	-8 704.75	2 966	740.46	R50	-9 193.97	2 964	563.47
L51	-8 735.38	2 966	598.11	R51	-9 272.76	2 964	373.17

Vel
Sheet

5

Van
of

6

P1055/18

PADRESERWE KOÖRDINATE / ROAD RESERVE CO-ORDINATES					
LINKERKANT/LEFT HAND SIDE			REGTERKANT/RIGHT HAND SIDE		
	Y	X	WG 27°	Y	X
L52	-8 812.35	2 966 143.40		R52	-9 275.50 2 964 366.73
L53	-8 839.19	2 965 996.16		R53	-9 413.79 2 964 059.58
L54	-8 879.55	2 965 748.33		R54	-9 534.94 2 963 797.96
L55	-8 931.92	2 965 427.35		R55	-9 537.40 2 963 792.45
L56	-9 015.99	2 965 070.12		R56	-9 588.03 2 963 679.21
L57	-9 097.48	2 964 744.26		R57	-9 797.15 2 963 216.81
L58	-9 155.10	2 964 557.03		R58	-9 883.48 2 963 025.92
L59	-9 247.31	2 964 354.38		R59	-10 098.52 2 962 550.52
L60	-9 506.73	2 963 779.29		R60	-10 149.58 2 962 437.62
L61	-9 559.98	2 963 661.87		R61	-10 161.17 2 962 411.99
L62	-9 855.89	2 963 012.31		R62	-10 163.09 2 962 407.66
L63	-10 130.76	2 962 405.12		R63	-10 294.87 2 962 120.01
L64	-10 133.14	2 962 399.72		R64	-10 369.64 2 961 957.04
L65	-10 364.13	2 961 896.31		R65	-10 459.47 2 961 761.37
L66	-10 390.28	2 961 837.78		R66	-10 536.63 2 961 594.72
L67	-10 449.88	2 961 707.28		R67	-10 570.49 2 961 509.25
L68	-10 541.48	2 961 506.68		R68	-10 603.75 2 961 425.31
L69	-10 562.86	2 961 449.96		R69	-10 606.28 2 961 418.91
L70	-10 587.12	2 961 318.24		R70	-10 609.83 2 961 394.28
L71	-10 592.17	2 961 246.99		R71	-10 620.95 2 961 317.09
L72	-10 594.09	2 961 162.83		R72	-10 631.49 2 961 242.78
L73	-10 579.03	2 961 057.08		R73	-10 636.40 2 961 207.97
L74	-10 572.92	2 961 014.00		R74	-10 612.42 2 961 049.00
L75	-10 552.58	2 960 869.86		R75	-10 606.01 2 961 006.65
L76	-10 506.89	2 960 569.79		R76	-10 605.36 2 961 002.37
L77	-10 439.84	2 960 510.46		R77	-10 600.05 2 960 967.21
L78	-10 344.94	2 960 473.00		R78	-10 568.36 2 960 757.54
				R79	-10 537.31 2 960 552.14
				R80	-10 544.67 2 960 546.21
				R81	-10 648.83 2 960 586.02
				R82	-10 657.56 2 960 561.56
				R83	-10 663.83 2 960 544.01
				R84	-10 364.62 2 960 423.06

Vel Sheet	6	Van of	6	P1055/18
--------------	---	-----------	---	----------