

DEPARTMENT OF TRANSPORT

NO. 415

15 MARCH 2019

**THE SOUTH AFRICAN NATIONAL ROADS
AGENCY SOC LIMITED**

Registration No: 1998/009584/30

DECLARATION AMENDMENT OF NATIONAL ROAD N3 SECTION 8

AMENDMENT OF DECLARATION No. 938 OF 1989.

By virtue of Section 40 (1)(b) of The South African National Roads Agency Limited and National Roads Act, 1998 (Act No. 7 of 1998), I hereby amend Declaration No. 938 of 1989 by substituting the section of the route from Warden Interchange up to the common boundary between the farms Nooitgedacht 1761 and Pramkop 183 on sheet 3 of Plan No. P234/88, with the accompanying sheets 1 to 6 of Plan No. P1046/18.

(National Road N3 Section 8: Warden Interchange – Nooitgedacht)

MINISTER OF TRANSPORT

DEPARTEMENT VAN VERVOER

NO. 415

15 MAART 2019

**DIE SUID-AFRIKAANSE NASIONALE
PADAGENTSKAP MSB BEPERK**

Registrasie No: 1998/009584/30

No.-----

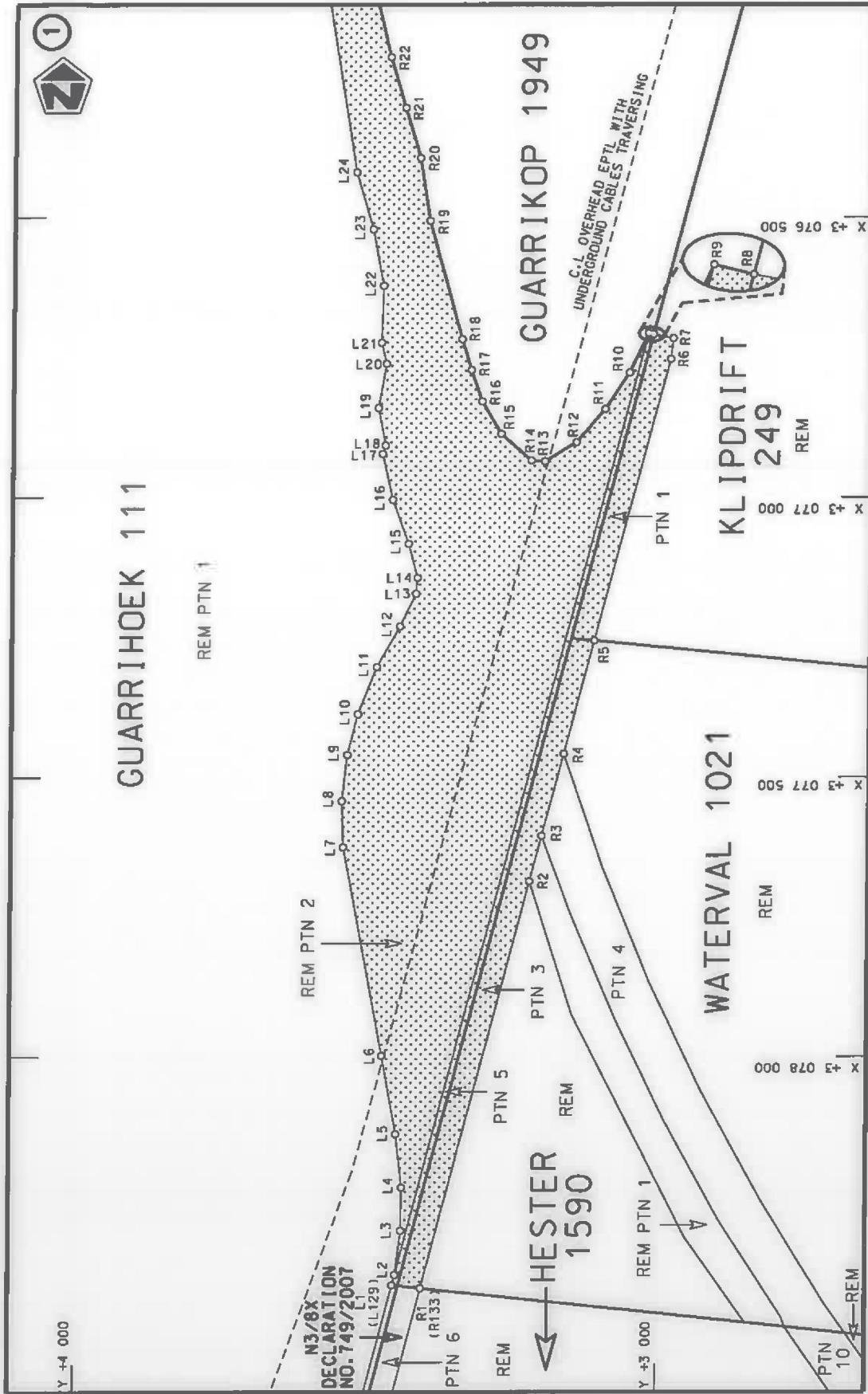
Datum.....


VERKLARING WYSIGING VAN NASIONALE PAD N3 SEKSIE 8

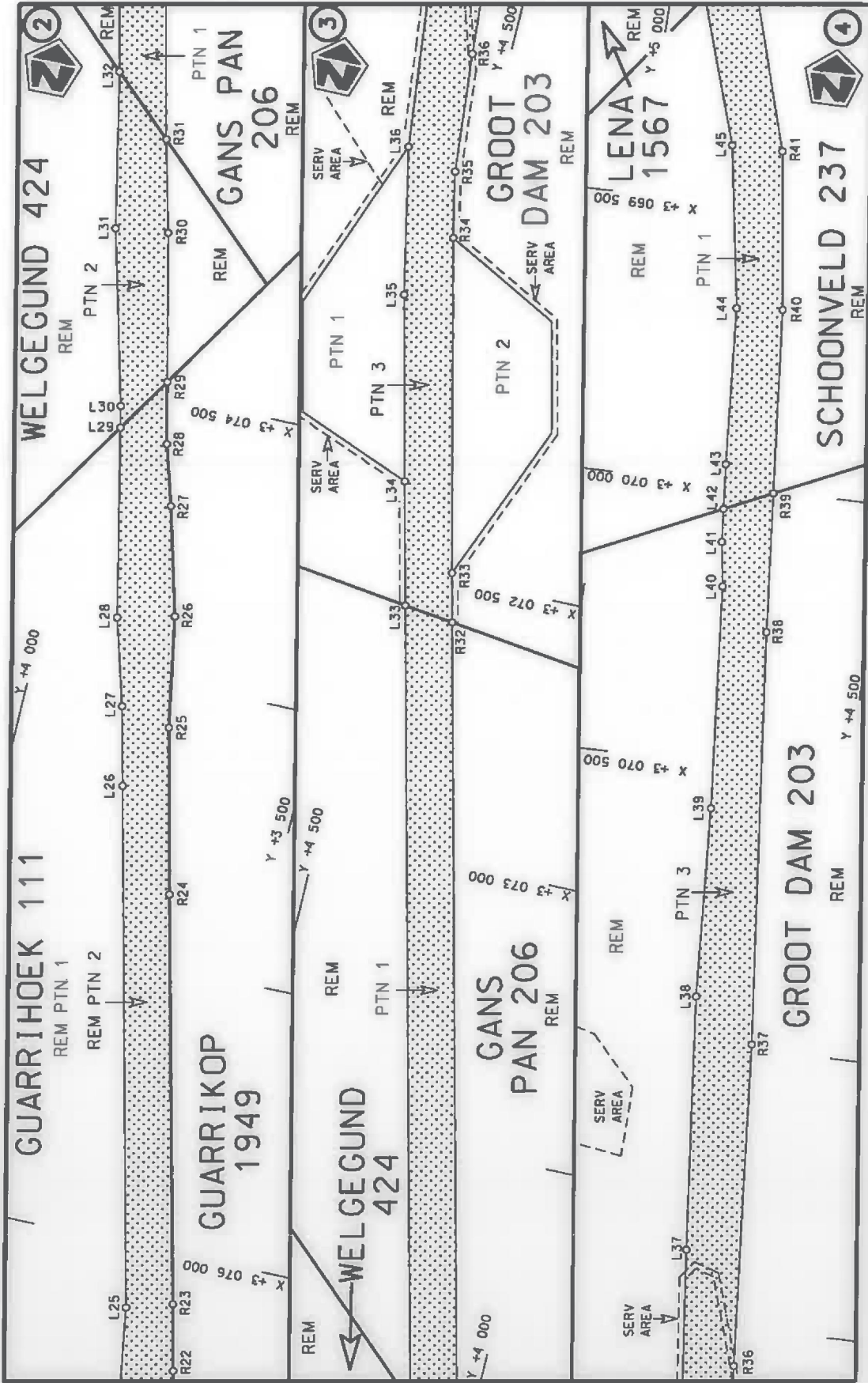
WYSIGING VAN VERKLARING No. 938 VAN 1989.

Kragtens Artikel 40(1)(b) van die Wet op die Suid-Afrikaanse Nasionale Padagentskap Beperk en op Nasionale Paaie, 1998 (Wet No. 7 van 1998), wysig ek hiermee Verklaring No. 938 van 1989 deur die gedeelte van die roete te vervang vanaf Warden Wisselaar tot by die gemeenskaplike grens tussen die plase Nooitgedacht 1761 en Pramkop 183 op vel 3 van Plan No. P234/88 , met meegaande velle 1 tot 6 van Plan No. P1046/18.

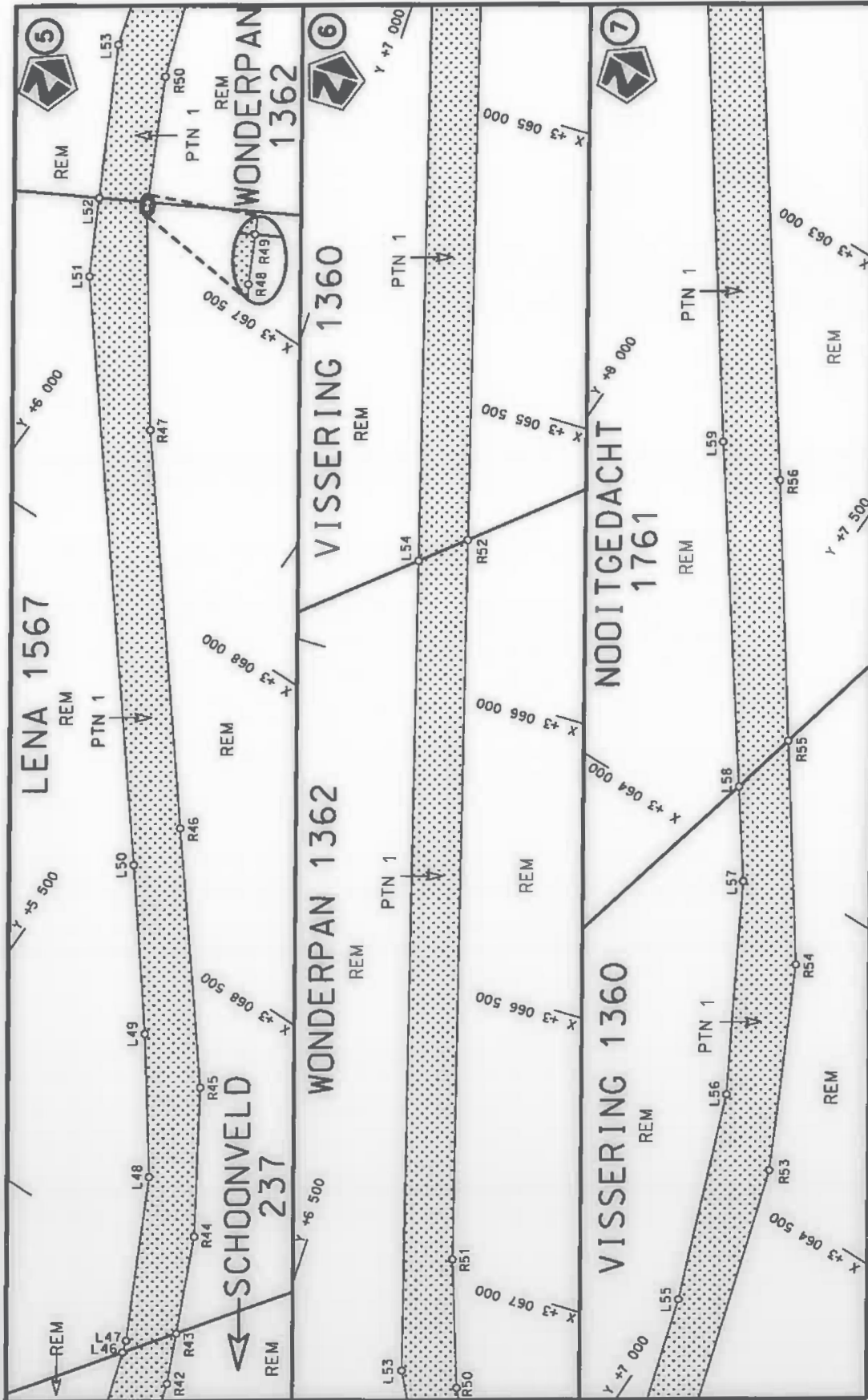
(Nasionale Pad N3 Seksie 8: Warden Wisselaar – Nooitgedacht)**MINISTER VAN VERVOER**



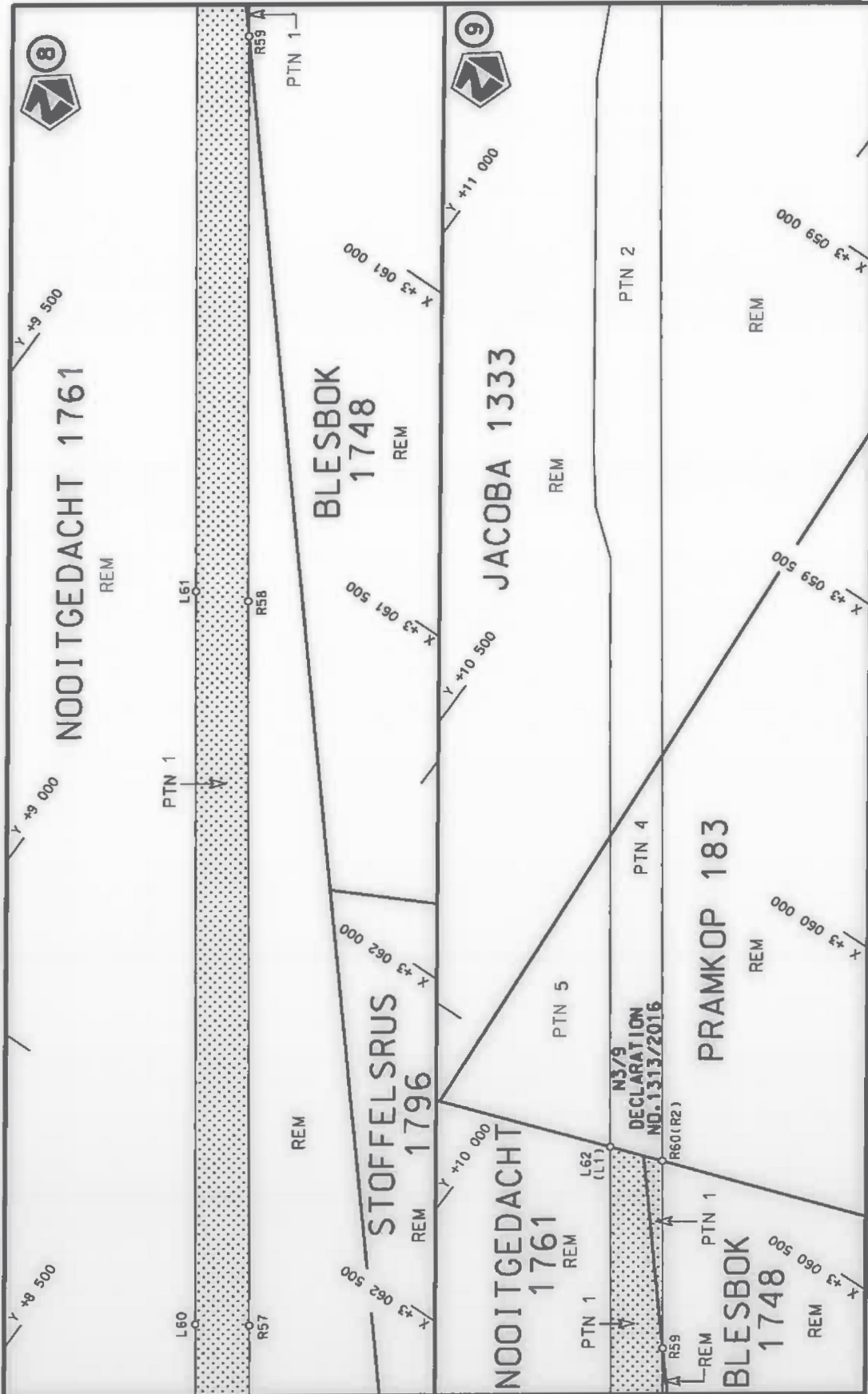
| | | | |
|---|---|---|---|
| <p>Die Suid Afrikaanse Nasionale Padagentskap MSB Bpk The South African National Roads Agency SOC Ltd</p> | <p>Die figuur getoon The figure shown</p>  | <p>stel die padreserwe voor van 'n gedeelte represents the road reserve of a portion van Nasionale Roete N3 of National Route</p> <p>Seksie 8 Section</p> | <p>Vel Sheet 1 of 6 Plan P1046/18</p> |
|---|---|---|---|



| | | | | |
|---|---------------------------------------|---|--|------------------|
| Die Suid Afrikaanse Nasionale Padagentskap MSB Bpk The South African National Roads Agency SOC Ltd | Die figuur getoon The figure shown |  | stelde padreserwe voor van 'n gedeelte represents the road reserve of a portion van Nasionale Roete N3 of National Route N3 Section | Vel Sheet 2 of 6 |
| | | | | Plan P1046/18 |



| | | | |
|---|---|---|--|
| <p>Die Suid Afrikaanse Nasionale Padagentskap MSB Bpk The South African National Roads Agency SOC Ltd</p> | <p>Die figuur getoon The figure shown</p>  | <p>stel die padreserwe voor van 'n gedeelte represents the road reserve of a portion van Nasionale Roete N3 of National Route</p> | <p>Vel Sheet 3 of 6</p> <p>Plan P1046/18</p> |
| | | <p>8 Seksie Section</p> | |



| | | | | | |
|---|---------------------------------------|--|--|---|------------------------|
| Die Suid Afrikaanse Nasionale Padagentskap MSB Bpk The South African National Roads Agency SOC Ltd | Die figuur getoon The figure shown | | steldie padreserwe voor van 'n gedeelte represents the road reserve of a portion van Nasionale Roete N3 of National Route | 8 | Vel Sheet 4 of 6 |
| | | | | | Plan P1046/18 |

| PADRESERWE KOÖRDINATE / ROAD RESERVE CO-ORDINATES | | | | | | |
|---|----------|--------------|--------|----------------------------|----------|--------------|
| LINKERKANT/LEFT HAND SIDE | | | | REGTERKANT/RIGHT HAND SIDE | | |
| | Y | X | WG 29° | | Y | X |
| L1 | 3 451.55 | 3 078 409.42 | | R1 | 3 402.51 | 3 078 414.82 |
| L2 | 3 446.87 | 3 078 390.63 | | R2 | 3 220.29 | 3 077 686.56 |
| L3 | 3 437.30 | 3 078 311.54 | | R3 | 3 199.96 | 3 077 605.18 |
| L4 | 3 436.38 | 3 078 234.53 | | R4 | 3 163.38 | 3 077 458.74 |
| L5 | 3 447.04 | 3 078 138.79 | | R5 | 3 112.97 | 3 077 256.02 |
| L6 | 3 471.76 | 3 077 998.34 | | R6 | 2 986.42 | 3 076 753.53 |
| L7 | 3 540.16 | 3 077 625.52 | | R7 | 2 982.03 | 3 076 716.23 |
| L8 | 3 542.92 | 3 077 542.73 | | R8 | 3 016.04 | 3 076 709.15 |
| L9 | 3 534.35 | 3 077 460.33 | | R9 | 3 024.55 | 3 076 706.97 |
| L10 | 3 516.55 | 3 077 387.35 | | R10 | 3 056.45 | 3 076 777.31 |
| L11 | 3 484.89 | 3 077 303.07 | | R11 | 3 097.61 | 3 076 842.85 |
| L12 | 3 445.61 | 3 077 230.65 | | R12 | 3 146.31 | 3 076 901.54 |
| L13 | 3 418.68 | 3 077 172.28 | | R13 | 3 199.47 | 3 076 935.72 |
| L14 | 3 416.22 | 3 077 143.67 | | R14 | 3 223.00 | 3 076 934.27 |
| L15 | 3 432.12 | 3 077 082.74 | | R15 | 3 274.84 | 3 076 887.00 |
| L16 | 3 460.07 | 3 077 004.29 | | R16 | 3 308.01 | 3 076 828.61 |
| L17 | 3 477.94 | 3 076 922.58 | | R17 | 3 326.77 | 3 076 772.99 |
| L18 | 3 473.18 | 3 076 907.25 | | R18 | 3 342.92 | 3 076 717.75 |
| L19 | 3 485.77 | 3 076 840.41 | | R19 | 3 399.91 | 3 076 506.64 |
| L20 | 3 472.79 | 3 076 761.30 | | R20 | 3 417.47 | 3 076 394.65 |
| L21 | 3 481.61 | 3 076 724.07 | | R21 | 3 443.74 | 3 076 305.15 |
| L22 | 3 478.86 | 3 076 622.09 | | R22 | 3 470.12 | 3 076 215.10 |
| L23 | 3 497.62 | 3 076 521.67 | | R23 | 3 497.70 | 3 076 098.16 |
| L24 | 3 526.94 | 3 076 420.03 | | R24 | 3 672.36 | 3 075 379.48 |
| L25 | 3 574.84 | 3 076 121.27 | | R25 | 3 742.14 | 3 075 087.36 |
| L26 | 3 795.63 | 3 075 206.66 | | R26 | 3 778.03 | 3 074 890.28 |
| L27 | 3 829.24 | 3 075 067.39 | | R27 | 3 830.06 | 3 074 698.41 |
| L28 | 3 874.23 | 3 074 913.79 | | R28 | 3 862.78 | 3 074 591.28 |
| L29 | 3 947.38 | 3 074 579.94 | | R29 | 3 887.85 | 3 074 482.40 |
| L30 | 3 955.70 | 3 074 542.06 | | R30 | 3 948.08 | 3 074 221.06 |
| L31 | 4 037.98 | 3 074 232.83 | | R31 | 3 990.06 | 3 074 058.32 |
| L32 | 4 096.61 | 3 073 957.53 | | R32 | 4 348.15 | 3 072 573.15 |
| L33 | 4 433.59 | 3 072 561.19 | | R33 | 4 369.02 | 3 072 486.57 |
| L34 | 4 486.04 | 3 072 343.86 | | R34 | 4 505.89 | 3 071 899.87 |
| L35 | 4 564.68 | 3 072 017.40 | | R35 | 4 530.22 | 3 071 783.08 |
| L36 | 4 618.75 | 3 071 757.13 | | R36 | 4 550.69 | 3 071 570.81 |
| L37 | 4 660.43 | 3 071 373.10 | | R37 | 4 599.29 | 3 070 992.26 |
| L38 | 4 706.39 | 3 070 918.34 | | R38 | 4 676.26 | 3 070 252.92 |
| L39 | 4 727.47 | 3 070 579.52 | | R39 | 4 698.96 | 3 070 003.85 |
| L40 | 4 763.25 | 3 070 180.76 | | R40 | 4 728.94 | 3 069 674.96 |
| L41 | 4 775.25 | 3 070 101.48 | | R41 | 4 769.25 | 3 069 392.55 |
| L42 | 4 780.63 | 3 070 042.51 | | R42 | 4 846.67 | 3 069 138.14 |
| L43 | 4 787.97 | 3 069 962.15 | | R43 | 4 884.23 | 3 069 055.31 |
| L44 | 4 808.38 | 3 069 681.97 | | R44 | 4 956.37 | 3 068 896.21 |
| L45 | 4 856.69 | 3 069 392.87 | | R45 | 5 097.77 | 3 068 671.48 |
| L46 | 4 941.07 | 3 069 134.17 | | R46 | 5 387.29 | 3 068 310.21 |
| L47 | 4 947.84 | 3 069 113.42 | | R47 | 5 831.22 | 3 067 755.74 |
| L48 | 5 079.93 | 3 068 851.32 | | R48 | 6 059.40 | 3 067 435.01 |
| L49 | 5 230.22 | 3 068 645.11 | | R49 | 6 064.44 | 3 067 425.11 |
| L50 | 5 415.83 | 3 068 408.10 | | R50 | 6 166.07 | 3 067 225.52 |
| L51 | 6 071.72 | 3 067 588.60 | | R51 | 6 242.33 | 3 067 009.43 |

Vel
Sheet

5

Van
of

6

P1046/18

PADRESERWE KOÖRDINATE / ROAD RESERVE CO-ORDINATES

| LINKERKANT/LEFT HAND SIDE | | | REGTERKANT/RIGHT HAND SIDE | | | |
|---------------------------|----------|--------------|----------------------------|-----|----------|--------------|
| | Y | X | WG 29° | | Y | X |
| L52 | 6 137.06 | 3 067 464.80 | | R52 | 6 607.56 | 3 065 782.49 |
| L53 | 6 264.52 | 3 067 223.30 | | R53 | 7 003.87 | 3 064 451.18 |
| L54 | 6 675.84 | 3 065 842.29 | | R54 | 7 165.78 | 3 064 120.07 |
| L55 | 7 007.96 | 3 064 727.21 | | R55 | 7 395.29 | 3 063 794.26 |
| L56 | 7 139.73 | 3 064 377.87 | | R56 | 7 662.25 | 3 063 415.28 |
| L57 | 7 323.76 | 3 064 045.32 | | R57 | 8 204.94 | 3 062 653.85 |
| L58 | 7 422.37 | 3 063 908.50 | | R58 | 8 955.25 | 3 061 601.73 |
| L59 | 7 781.69 | 3 063 410.89 | | R59 | 9 538.69 | 3 060 782.93 |
| L60 | 8 282.17 | 3 062 705.29 | | R60 | 9 732.75 | 3 060 510.53 |
| L61 | 9 039.04 | 3 061 638.76 | | | | |
| L62 | 9 820.44 | 3 060 541.02 | | | | |

| | | | | |
|--------------|---|-----------|---|----------|
| Vel Sheet | 6 | Van of | 6 | P1046/18 |
|--------------|---|-----------|---|----------|