

DEPARTMENT OF TRANSPORT

NO. 414

15 MARCH 2019

**THE SOUTH AFRICAN NATIONAL ROADS
AGENCY SOC LIMITED**

Registration No: 1998/009584/30

DECLARATION AMENDMENT OF NATIONAL ROAD R582 SECTION 1**AMENDMENT OF DECLARATION No's. 342 OF 2016 AND 243 OF 2018.**

By virtue of section 40(1)(b) of the South African National Roads Agency Limited and the National Roads Act 1998 (Act No. 7 of 1998), I hereby amend Declaration No.'s 342 of 2016 and 243 of 2018 by substituting it in its entirety, with the accompanying sheets 1 to 5 of Plan No. P1069/18.

(National Road R582 Section 1: Vyeboom (N4/8X) – Coopersdal (R571/1))**MINISTER OF TRANSPORT**

DEPARTEMENT VAN VERVOER

NO. 414

15 MAART 2019

**DIE SUID-AFRIKAANSE NASIONALE
PADAGENTSKAP MSB BEPERK**

Registrasie No: 1998/009584/30

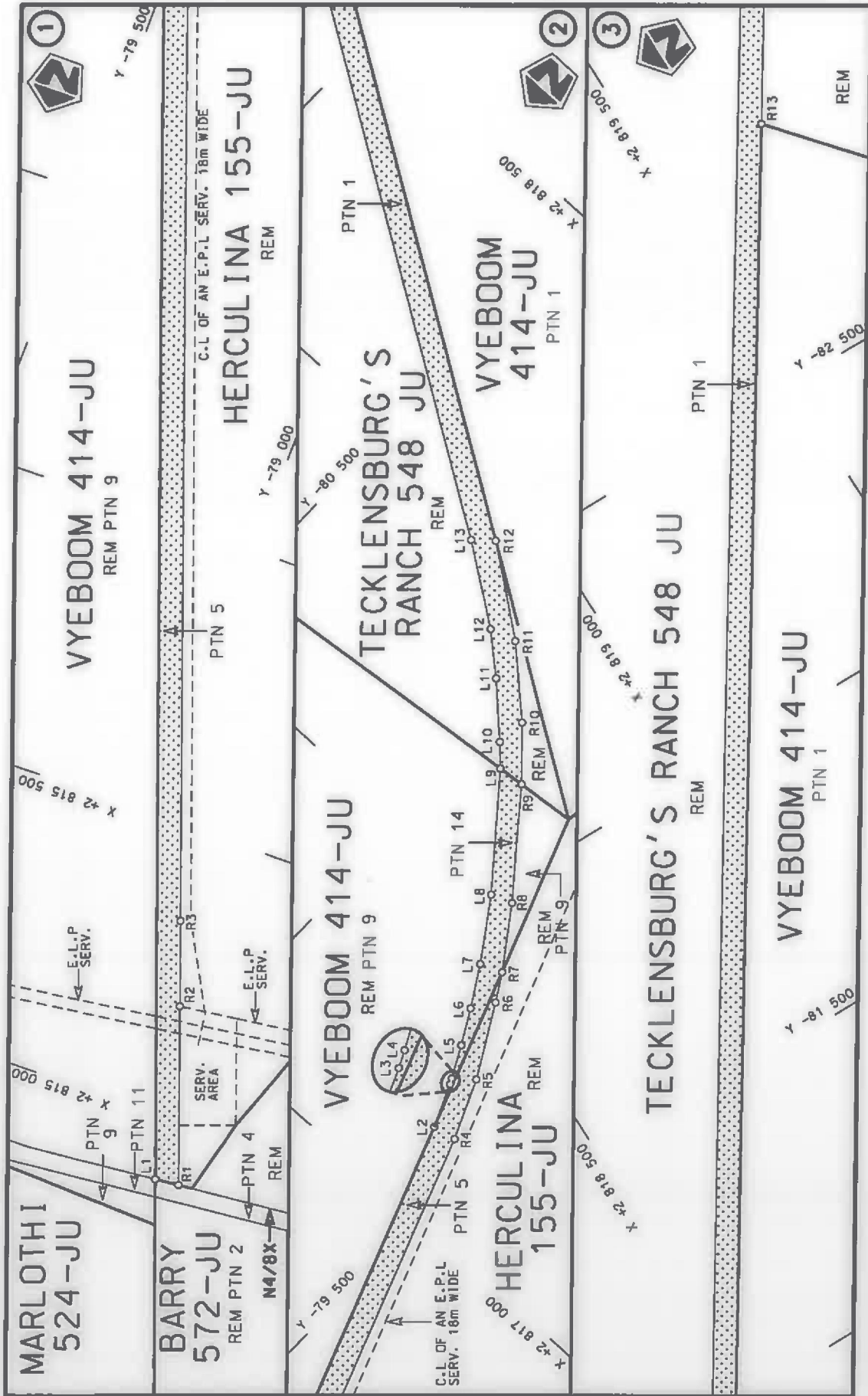
VERKLARING WYSIGING VAN NASIONALE PAD R582 SEKSIE 1

WYSIGING VAN VERKLARING No.'s 342 VAN 2016 EN 243 VAN 2018.

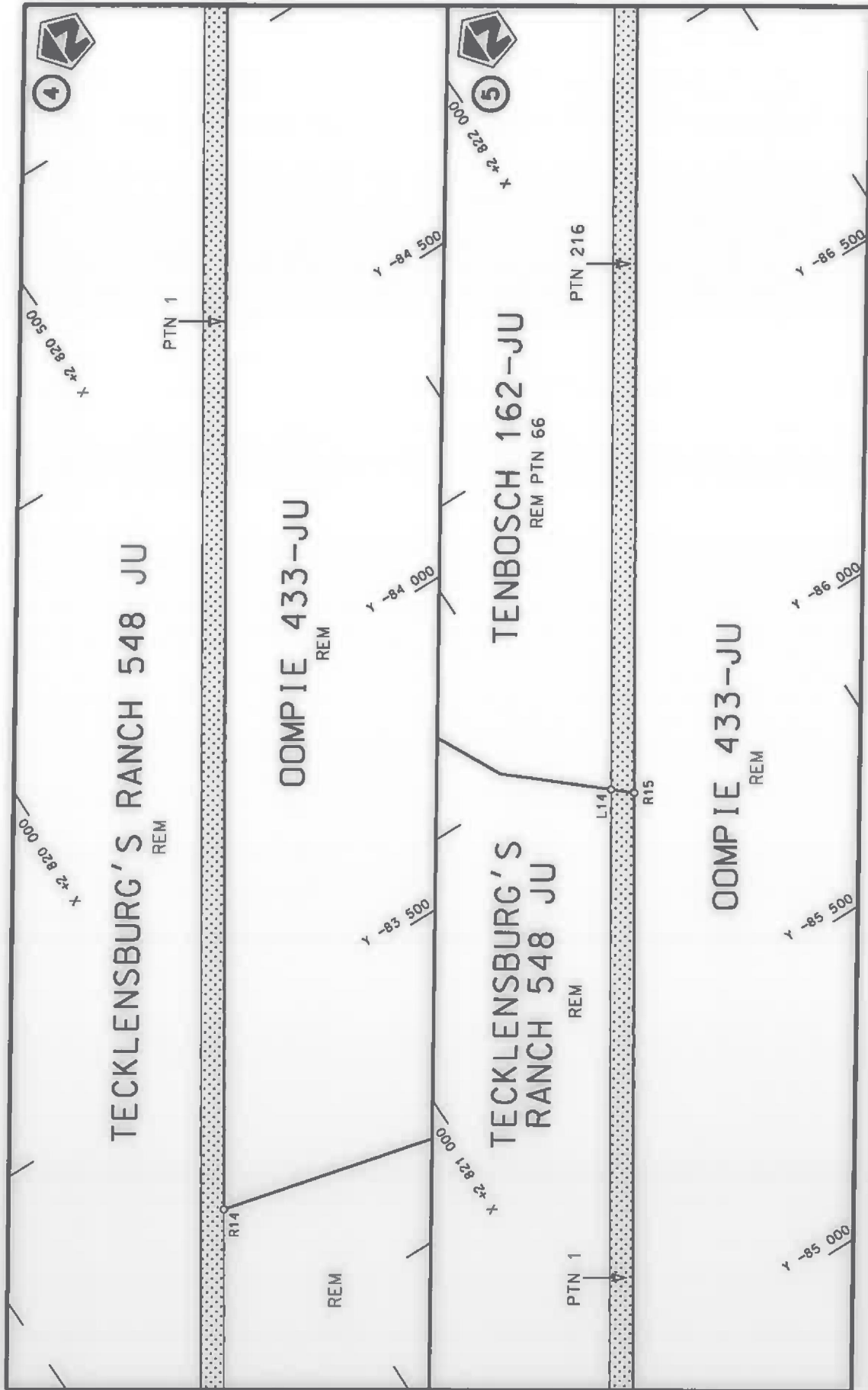
Kragtens Artikel 40(1)(b) van die Suid-Afrikaanse Nasionale Padagentskap Beperk en Nasionale Paaie Wet 1998 (Wet No. 7 van 1998), wysig ek hiermee Verklaring No. 342 van 2016 en 243 van 2018 deur dit in sy geheel te vervang, met bygaande velle 1 tot 5 van Plan No. P1069/18.


(Nasionale Pad R582 Seksie 1: Vyeboom (N4/8X) – Coopersdal (R571/1))

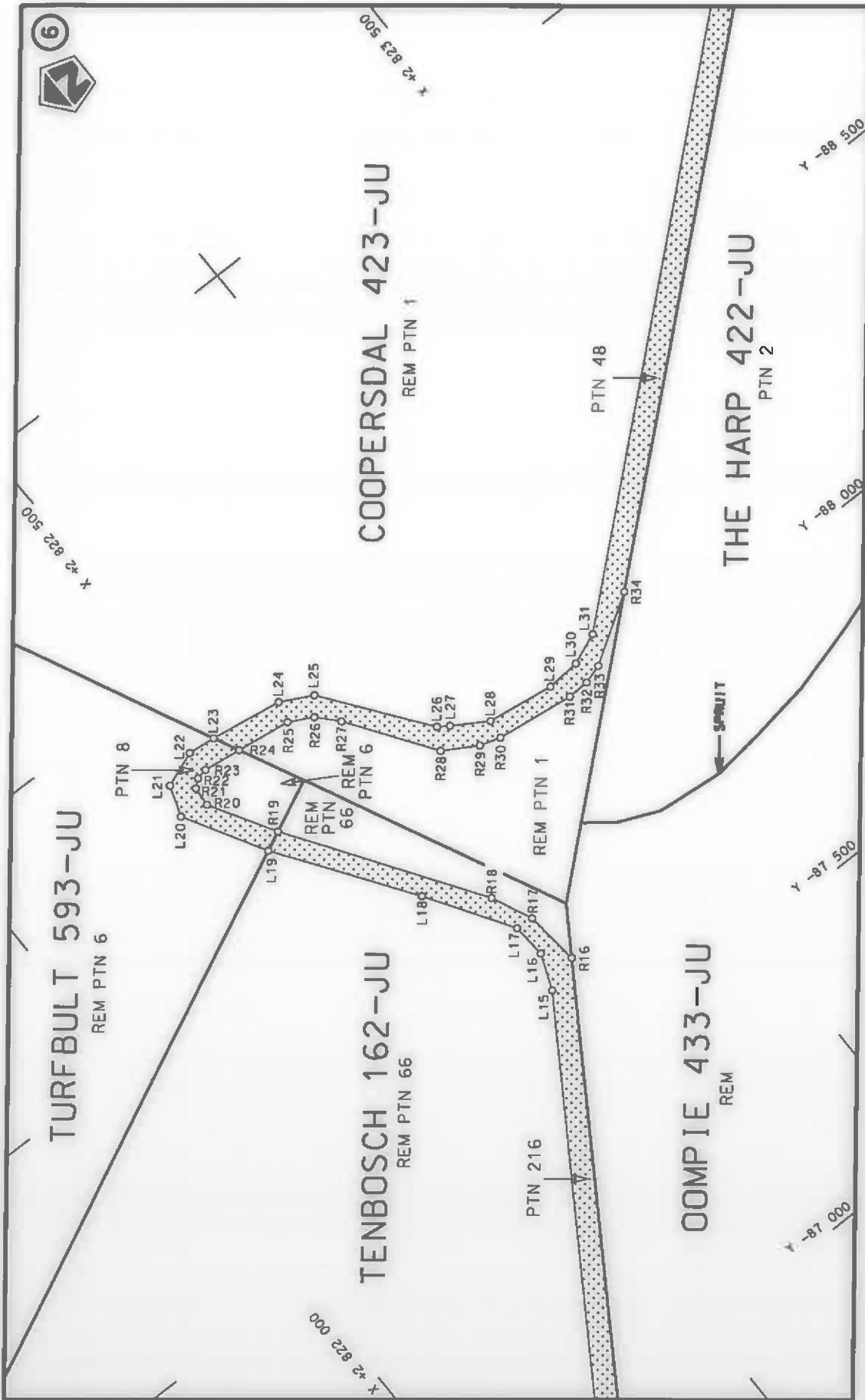

MINISTER VAN VERVOER




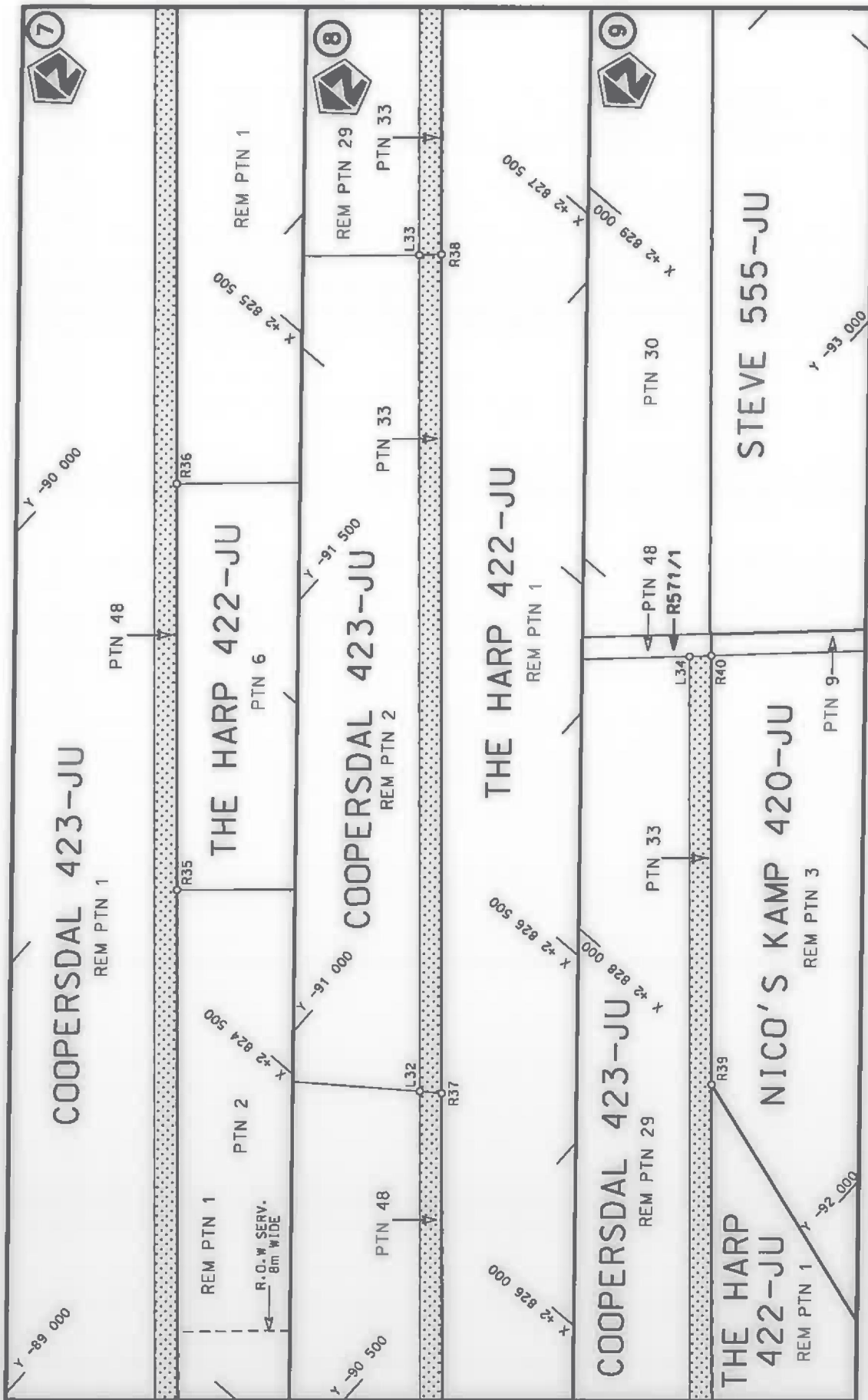
<p>Die Suid Afrikaanse Nasionale Padagentskap MSB Bpk The South African National Roads Agency SOC Ltd</p>	<p>Die figuur getoon The figure shown</p>	<p>steldie padreserwe voor van 'n gedeelte represents the road reserve of a portion van Nasionale Roete R582 Sektie of National Route Section</p>	<p>Vel van Sheet 1 of 5 Plan P1069/18</p>
---	---	---	---




<p>Die Suid Afrikaanse Nasionale Padagentskap MSB Bpk The South African National Roads Agency SOC Ltd</p>	<p>Die figuur getoon The figure shown</p> 	<p>steldie padreserwe voor van 'n gedeelte represents the road reserve of a portion van Nasionale Roete R582 Sektie of National Route Section</p>	<p>Vel van Sheet 2 of 5 Plan P1069/18</p>
---	---	---	---



<p>Die Suid Afrikaanse Nasionale Padagentskap MSB Bpk The South African National Roads Agency SOC Ltd</p>	<p>Die figuur getoon The figure shown</p> 	<p>steldie padreserwe voor van 'n gedeelte represents the road reserve of a portion van Nasionale Roete R582 of National Route Seksie R582 Section</p>	<p>Vel Sheet 3 of 5 Plan P1069/18</p>
---	---	--	---



<p>Die Suid Afrikaanse Nasionale Padagentskap MSB Bpk The South African National Roads Agency SOC Ltd</p>	<p>Die figuur getoon The figure shown</p> 	<p>steidie podreserwe voor van 'n gedeelte represents the road reserve of a portion van Nasionale Roete R582 Seksie of National Route Section</p>	<p>Vel Sheet 4 of 5 Plan P1069/18</p>
---	---	---	---

PADRESERWE KOÖRDINATE / ROAD RESERVE CO-ORDINATES					
LINKERKANT/LEFT HAND SIDE			REGTERKANT/RIGHT HAND SIDE		
	Y	X	WG 31°	Y	X
L1	-78 769.40	2 814	890.82	R1	-78 728.35 2 814 894.44
L2	-79 591.32	2 817	141.22	R2	-78 837.18 2 815 194.42
L3	-79 623.24	2 817	214.99	R3	-78 889.42 2 815 337.95
L4	-79 628.01	2 817	225.02	R4	-79 550.69 2 817 149.15
L5	-79 656.42	2 817	279.08	R5	-79 595.84 2 817 251.99
L6	-79 689.90	2 817	338.40	R6	-79 665.23 2 817 374.91
L7	-79 731.65	2 817	407.08	R7	-79 693.89 2 817 422.00
L8	-79 802.21	2 817	510.38	R8	-79 765.66 2 817 523.86
L9	-79 944.69	2 817	685.39	R9	-79 898.47 2 817 689.46
L10	-79 977.73	2 817	719.26	R10	-79 972.98 2 817 770.29
L11	-80 060.11	2 817	797.82	R11	-80 080.87 2 817 868.55
L12	-80 127.13	2 817	855.37	R12	-80 228.26 2 817 976.18
L13	-80 260.64	2 817	948.69	R13	-82 922.80 2 819 697.06
L14	-85 911.34	2 821	557.76	R14	-83 246.70 2 819 903.93
L15	-87 639.11	2 822	662.22	R15	-85 884.37 2 821 588.49
L16	-87 703.16	2 822	687.50	R16	-87 663.07 2 822 724.24
L17	-87 764.09	2 822	683.13	R17	-87 761.70 2 822 714.31
L18	-87 912.04	2 822	590.86	R18	-87 834.10 2 822 682.42
L19	-88 142.12	2 822	434.57	R19	-88 158.46 2 822 468.79
L20	-88 284.53	2 822	355.67	R20	-88 272.34 2 822 403.38
L21	-88 339.29	2 822	375.02	R21	-88 307.13 2 822 406.72
L22	-88 363.46	2 822	437.40	R22	-88 318.86 2 822 420.62
L23	-88 357.96	2 822	486.00	R23	-88 322.88 2 822 439.98
L24	-88 338.47	2 822	612.54	R24	-88 314.12 2 822 506.82
L25	-88 309.26	2 822	667.72	R25	-88 300.91 2 822 602.26
L26	-88 132.37	2 822	797.95	R26	-88 278.79 2 822 643.40
L27	-88 119.75	2 822	816.22	R27	-88 243.72 2 822 675.22
L28	-88 082.32	2 822	875.99	R28	-88 094.60 2 822 776.15
L29	-88 065.16	2 822	994.77	R29	-88 059.82 2 822 835.04
L30	-88 070.12	2 823	054.83	R30	-88 048.37 2 822 871.15
L31	-88 093.09	2 823	109.41	R31	-88 030.12 2 823 009.81
L32	-90 764.29	2 826	139.74	R32	-88 032.04 2 823 047.75
L33	-91 750.16	2 827	255.19	R33	-88 042.38 2 823 081.69
L34	-92 839.27	2 828	488.73	R34	-88 117.85 2 823 198.61
				R35	-89 368.98 2 824 615.51
				R36	-89 847.70 2 825 157.67
				R37	-90 734.06 2 826 161.46
				R38	-91 722.12 2 827 280.90
				R39	-92 305.72 2 827 941.92
				R40	-92 811.29 2 828 514.52

Vel	5	Van	5
Sheet		of	

P1069/18