

DEPARTMENT OF TRANSPORT

NO. 412

15 MARCH 2019

**THE SOUTH AFRICAN NATIONAL ROADS
AGENCY SOC LIMITED**

Registration No: 1998/009584/30

DECLARATION AMENDMENT OF NATIONAL ROAD R104 SECTION 2**AMENDMENT OF DECLARATION No. 919 OF 2010.**

By virtue of Section 40 (1)(b) of The South African National Roads Agency Limited and National Roads Act, 1998 (Act No. 7 of 1998), I hereby amend Declaration No. 919 of 2010 by substituting it in its entirety, with the accompanying sheets 1 to 7 of Plan No. P1062/18.

In the town of Bronkhorstspuit the R104 Section 2 starts at the junction of the streets known as Church Street and Lanham Street at time of declaration, and then therefrom it follows the street known as Church Street at the time of declaration, in a general easterly direction

(National Road R104 Section 2: Bronkhorstspuit – Gauteng / Mpumalanga Provincial Border)
MINISTER OF TRANSPORT

DEPARTEMENT VAN VERVOER

NO. 412

15 MAART 2019

**DIE SUID-AFRIKAANSE NASIONALE
PADAGENTSAP MSB BEPERK**

Registrasie No: 1998/009584/30

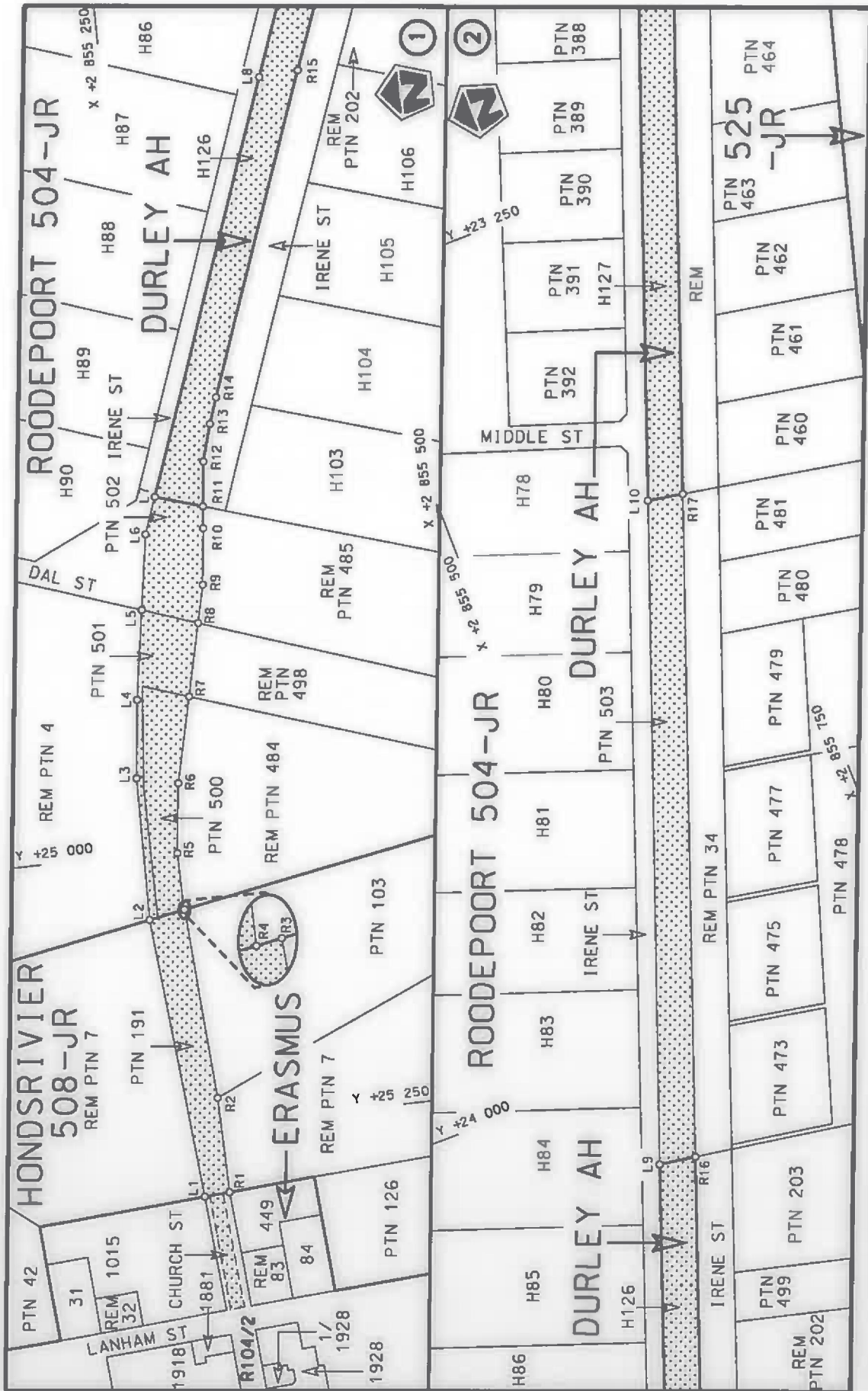
VERKLARING WYSIGING VAN NASIONALE PAD R104 SEKSIE 2

WYSIGING VAN VERKLARING No. 919 VAN 2010.

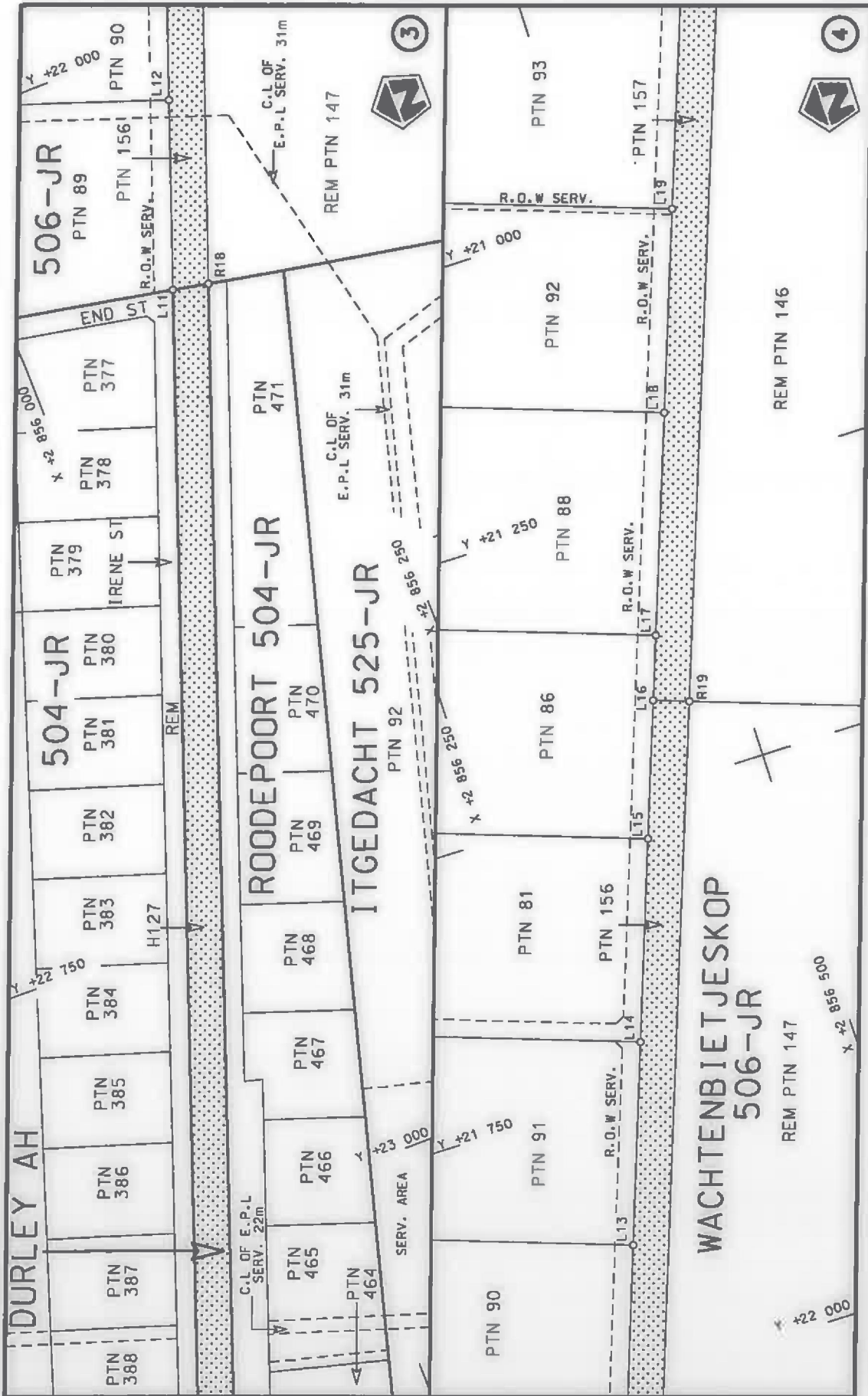
Kragtens Artikel 40(1)(b) van die Wet op die Suid-Afrikaanse Nasionale Padagentskap Beperk en op Nasionale Paaie, 1998 (Wet No. 7 van 1998), wysig ek hiermee Verklaring No. 919 van 2010 deur dit in sy geheel te vervang, met bygaande velle 1 tot 7 van Plan No. P1062/18.

In die dorp Bronkhorstspruit begin die R104 Seksie 2 by die interseksie van die strate bekend as Kerkstraat en Lanhamstraat tydens datum van verklaring, en daarvandaan volg dit dan die straat bekend as Kerkstraat tydens datum van verklaring, in 'n algemene oostelike rigting.

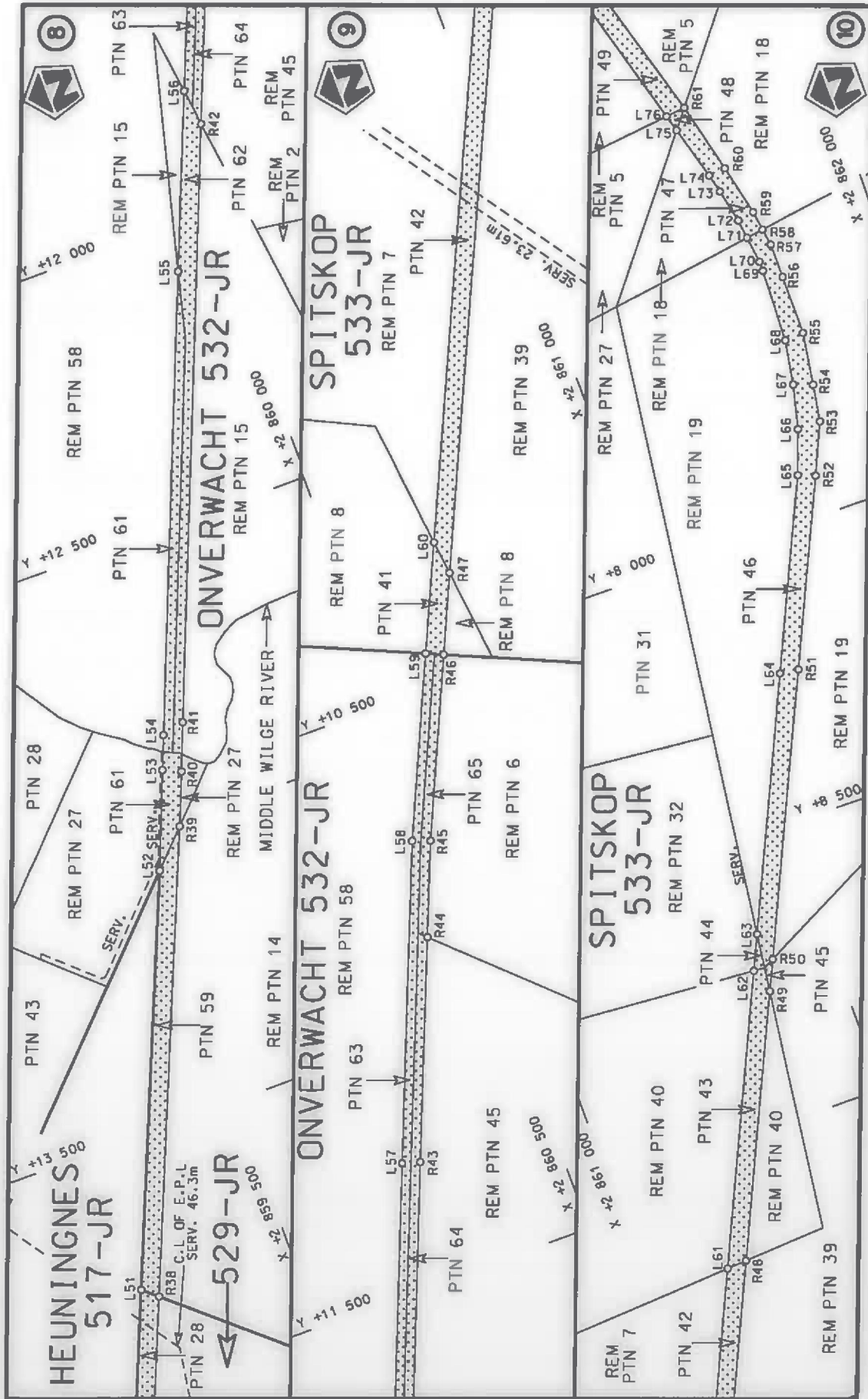
(Nasionale Pad R104 Seksie 2: Bronkhorstspruit – Gauteng / Mpumalanga Provinsiale Grens)
MINISTER VAN VERVOER



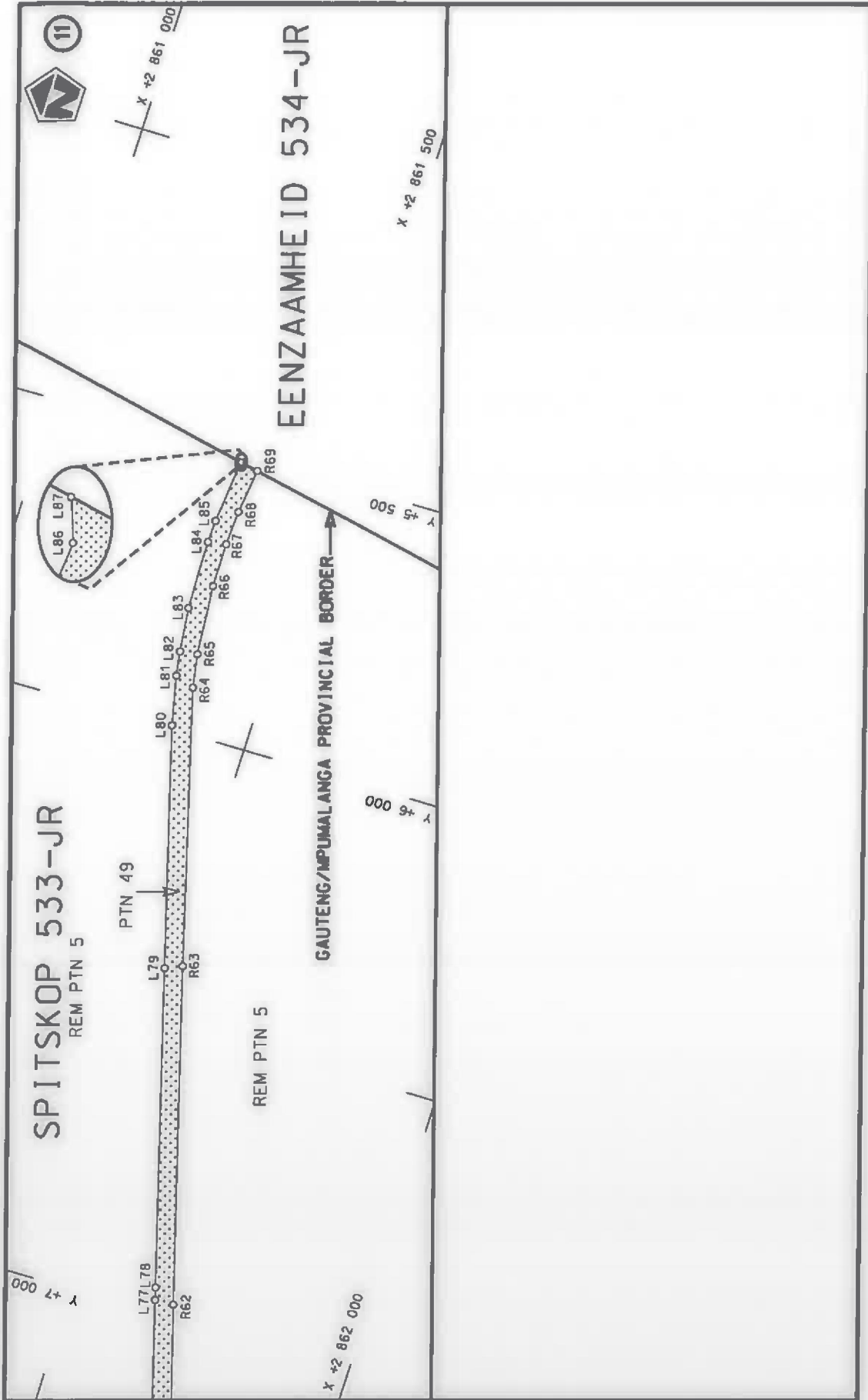
<p>Die Suid Afrikaanse Nasionale Padagentskap MSB Bpk The South African National Roads Agency SOC Ltd</p>	<p>Die figuur getoon The figure shown</p>	<p>stelt die padreserve voor van 'n gedeelte represents the road reserve of a portion van Nasionale Roete R104 Sektie of National Route R104 Section</p>	<p>Vel Sheet 1 of 7</p> <p>Plan P1062/18</p>
---	---	--	--



<p>Die Suid Afrikaanse Nasionale Padagentskap MSB Bpk The South African National Roads Agency SOC Ltd</p>	<p>Die figuur getoon The figure shown</p>	<p>Vel Sheet 2 of 7 Plan P1062/18</p>
<p>steldie padreserwe voor van 'n gedeelte represents the road reserve of a portion van Nasionale Roete R104 of National Route</p>	<p>Seksie Section</p>	<p>2</p>



<p>Die Suid Afrikaanse Nasionale Padagentskap MSB Bpk The South African National Roads Agency SOC Ltd</p>	<p>Die figuur getoon The figure shown</p>	<p>stelt die padreserwe voor van 'n gedeelte represents the road reserve of a portion van Nasionale Roete R104 of National Route</p>	<p>Vel Sheet 4 of 7 Plan P1062/18</p>
---	---	--	---



<p>Die Suid Afrikaanse Nasionale Padagentskap MSB Bpk The South African National Roads Agency SOC Ltd</p>	<p>Die figuur getoon The figure shown</p> 	<p>stel die padreserwe voor van 'n gedeelte represents the road reserve of a portion van Nasionale Roete R104 of National Route</p> <p>R104 Seksie Section</p> <p>2</p>	<p>Vel Sheet</p> <p>5 van of</p> <p>7</p> <p>Plan P1062/18</p>
---	---	---	--

PADRESERWE KOÖRDINATE / ROAD RESERVE CO-ORDINATES					
LINKERKANT/LEFT HAND SIDE			REGTERKANT/RIGHT HAND SIDE		
	Y	X	WG 29°	Y	X
L1	25 312.68	2 855 235.31		R1	25 311.19 2 855 257.34
L2	25 060.16	2 855 213.29		R2	25 225.82 2 855 255.84
L3	24 932.46	2 855 215.15		R3	25 054.39 2 855 244.77
L4	24 862.73	2 855 223.20		R4	25 054.53 2 855 244.03
L5	24 783.15	2 855 235.55		R5	25 003.33 2 855 243.61
L6	24 716.06	2 855 245.92		R6	24 941.17 2 855 251.03
L7	24 683.72	2 855 257.53		R7	24 864.96 2 855 268.69
L8	24 320.83	2 855 387.64		R8	24 800.44 2 855 283.65
L9	24 089.41	2 855 470.68		R9	24 766.93 2 855 291.42
L10	23 529.30	2 855 672.32		R10	24 716.70 2 855 296.88
L11	22 211.83	2 856 143.10		R11	24 697.11 2 855 298.85
L12	22 052.67	2 856 200.01		R12	24 657.25 2 855 303.33
L13	21 881.91	2 856 261.07		R13	24 624.40 2 855 312.58
L14	21 711.14	2 856 322.13		R14	24 601.41 2 855 320.35
L15	21 540.37	2 856 383.19		R15	24 318.77 2 855 421.43
L16	21 424.25	2 856 424.71		R16	24 094.45 2 855 502.02
L17	21 369.61	2 856 444.25		R17	23 534.83 2 855 702.76
L18	21 182.83	2 856 511.04		R18	22 217.95 2 856 173.63
L19	21 012.07	2 856 572.11		R19	21 434.75 2 856 454.08
L20	20 841.30	2 856 633.18		R20	20 589.76 2 856 756.17
L21	20 670.54	2 856 694.25		R21	20 221.83 2 856 888.10
L22	20 579.28	2 856 726.88		R22	19 863.42 2 857 016.89
L23	20 499.78	2 856 755.31		R23	19 475.04 2 857 155.20
L24	20 329.01	2 856 816.38		R24	19 117.33 2 857 283.11
L25	20 211.24	2 856 858.49		R25	18 842.91 2 857 381.23
L26	20 158.24	2 856 877.45		R26	18 660.00 2 857 446.94
L27	19 987.48	2 856 938.52		R27	18 292.26 2 857 579.00
L28	19 852.64	2 856 986.74		R28	17 993.39 2 857 685.62
L29	19 816.71	2 856 999.59		R29	17 490.60 2 857 854.99
L30	19 645.96	2 857 060.64		R30	16 987.78 2 858 024.36
L31	19 475.17	2 857 121.71		R31	16 865.57 2 858 065.54
L32	19 304.40	2 857 182.78		R32	16 263.60 2 858 268.61
L33	19 133.63	2 857 243.84		R33	15 740.94 2 858 445.74
L34	18 962.86	2 857 304.90		R34	15 673.61 2 858 470.83
L35	18 775.40	2 857 371.93		R35	15 255.84 2 858 643.59
L36	18 650.02	2 857 416.86		R36	14 305.90 2 859 038.50
L37	18 279.15	2 857 549.41		R37	14 042.71 2 859 148.55
L38	18 002.72	2 857 649.73		R38	13 780.43 2 859 258.09
L39	17 501.79	2 857 818.48		R39	13 006.78 2 859 580.20
L40	17 000.83	2 857 987.22		R40	12 916.46 2 859 616.78
L41	16 806.35	2 858 052.87		R41	12 834.71 2 859 648.82
L42	16 276.93	2 858 231.35		R42	11 847.41 2 860 044.08
L43	15 728.50	2 858 416.10		R43	11 286.39 2 860 268.83
L44	15 660.75	2 858 441.41		R44	10 914.45 2 860 418.65
L45	15 328.18	2 858 579.62		R45	10 755.17 2 860 482.82
L46	15 158.38	2 858 650.19		R46	10 452.24 2 860 618.02
L47	14 653.74	2 858 860.49		R47	10 319.23 2 860 677.38
L48	14 230.09	2 859 037.99		R48	9 208.63 2 861 177.74
L49	14 227.81	2 859 037.75		R49	8 769.41 2 861 375.69
L50	13 999.50	2 859 132.92		R50	8 717.35 2 861 399.12
L51	13 758.31	2 859 233.48		R51	8 245.28 2 861 611.56

Vel
Sheet

6

Van

of

7

P1062/18

PADRESERWE KOÖRDINATE / ROAD RESERVE CO-ORDINATES						
LINKERKANT/LEFT HAND SIDE			REGTERKANT/RIGHT HAND SIDE			
	Y	X	WG 29°		Y	X
L52	13 068.77	2 859	520.87	R52	7 929.92	2 861 753.23
L53	12 902.44	2 859	587.09	R53	7 841.47	2 861 791.92
L54	12 844.18	2 859	610.26	R54	7 775.76	2 861 802.07
L55	12 079.14	2 859	917.08	R55	7 682.73	2 861 815.97
L56	11 781.82	2 860	036.14	R56	7 577.09	2 861 815.80
L57	11 277.26	2 860	238.88	R57	7 515.40	2 861 814.66
L58	10 744.38	2 860	453.03	R58	7 485.53	2 861 810.10
L59	10 439.54	2 860	589.82	R59	7 450.72	2 861 804.78
L60	10 258.89	2 860	671.14	R60	7 360.24	2 861 783.48
L61	9 211.06	2 861	142.81	R61	7 234.66	2 861 752.21
L62	8 725.69	2 861	361.34	R62	6 975.41	2 861 677.42
L63	8 666.14	2 861	388.30	R63	6 396.30	2 861 513.36
L64	8 241.29	2 861	579.38	R64	5 919.02	2 861 382.48
L65	7 918.80	2 861	724.31	R65	5 860.18	2 861 372.50
L66	7 841.49	2 861	751.52	R66	5 737.05	2 861 361.82
L67	7 763.88	2 861	770.04	R67	5 659.82	2 861 361.16
L68	7 685.02	2 861	783.06	R68	5 599.11	2 861 364.34
L69	7 554.90	2 861	786.59	R69	5 520.50	2 861 373.13
L70	7 537.81	2 861	786.15			
L71	7 490.17	2 861	779.78			
L72	7 455.95	2 861	775.21			
L73	7 396.14	2 861	762.02			
L74	7 362.97	2 861	753.48			
L75	7 267.86	2 861	726.69			
L76	7 238.77	2 861	718.50			
L77	6 976.58	2 861	644.52			
L78	6 955.33	2 861	638.72			
L79	6 408.92	2 861	484.55			
L80	5 993.60	2 861	367.72			
L81	5 907.06	2 861	348.20			
L82	5 864.27	2 861	341.59			
L83	5 786.44	2 861	332.31			
L84	5 665.01	2 861	329.99			
L85	5 625.52	2 861	331.33			
L86	5 513.98	2 861	341.95			
L87	5 513.73	2 861	341.86			

Vel Sheet	7	Van of	7	P1062/18
-----------	---	--------	---	----------