

## DEPARTMENT OF TRANSPORT

NO. 407

15 MARCH 2019

**THE SOUTH AFRICAN NATIONAL ROADS  
AGENCY SOC LIMITED****Registration No: 1998/009584/30****DECLARATION AMENDMENT OF NATIONAL ROAD N1 SECTION 17X**

AMENDMENT OF DECLARATION No. 1086 OF 2007.

By virtue of Section 40 (1)(b) of The South African National Roads Agency Limited and National Roads Act, 1998 (Act No. 7 of 1998), I hereby amend Declaration No. 1086 of 2007 from points L173 and R168 on sheet 4 of Plan No. P602/06 up to its end, by substituting all sheets of their respective Plans with the accompanying sheets 1 to 16 of Plan No. P1053/18.

**(National Road N1 Section 17X: Ventersburg – La Porte Vase)****MINISTER OF TRANSPORT**

## DEPARTEMENT VAN VERVOER

NO. 407

15 MAART 2019

**DIE SUID-AFRIKAANSE NASIONALE  
PADAGENTSKAP MSB BEPERK**

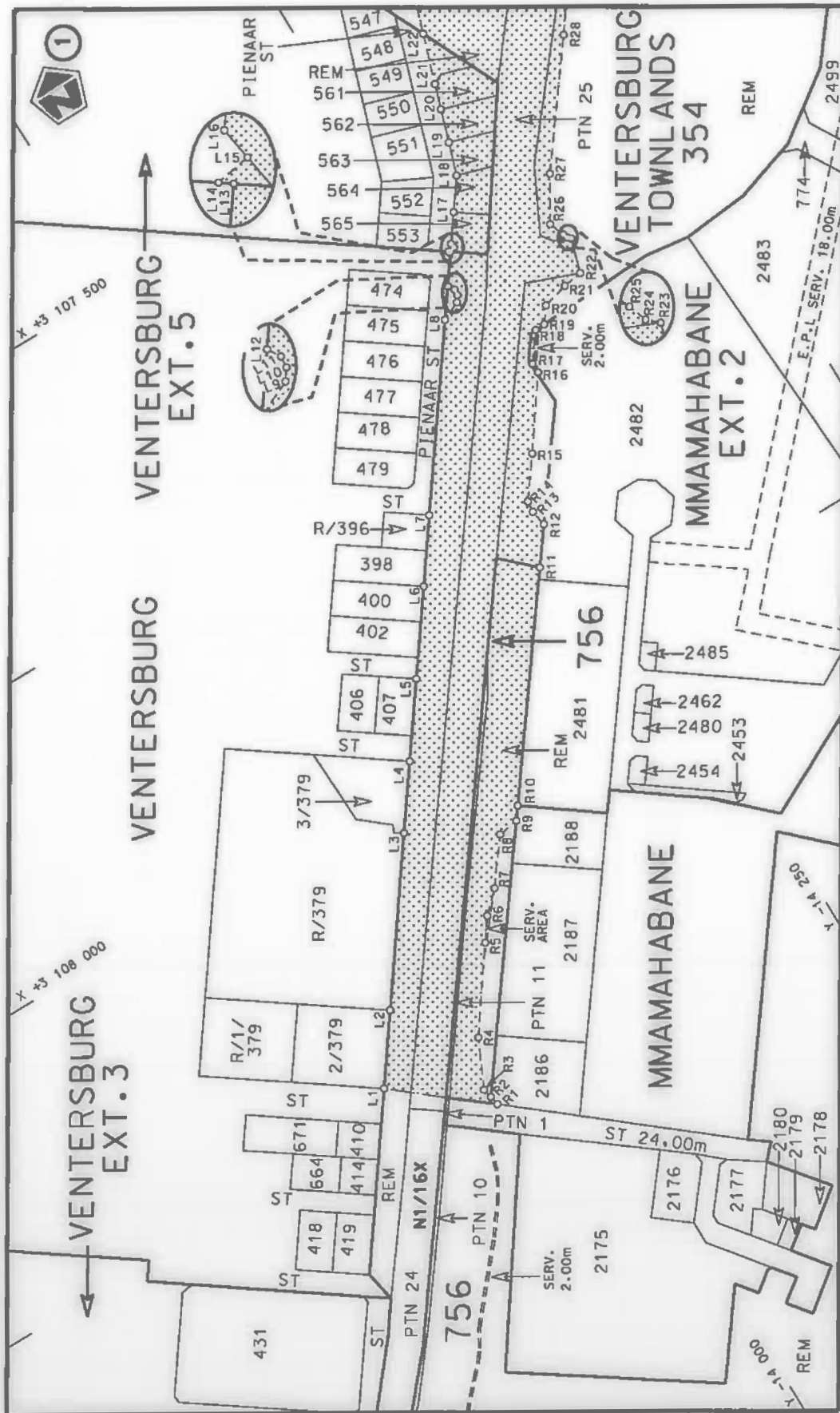
Registrasie No: 1998/009584/30

**VERKLARING WYSIGING VAN NASIONALE PAD N1 SEKSIE 17X**

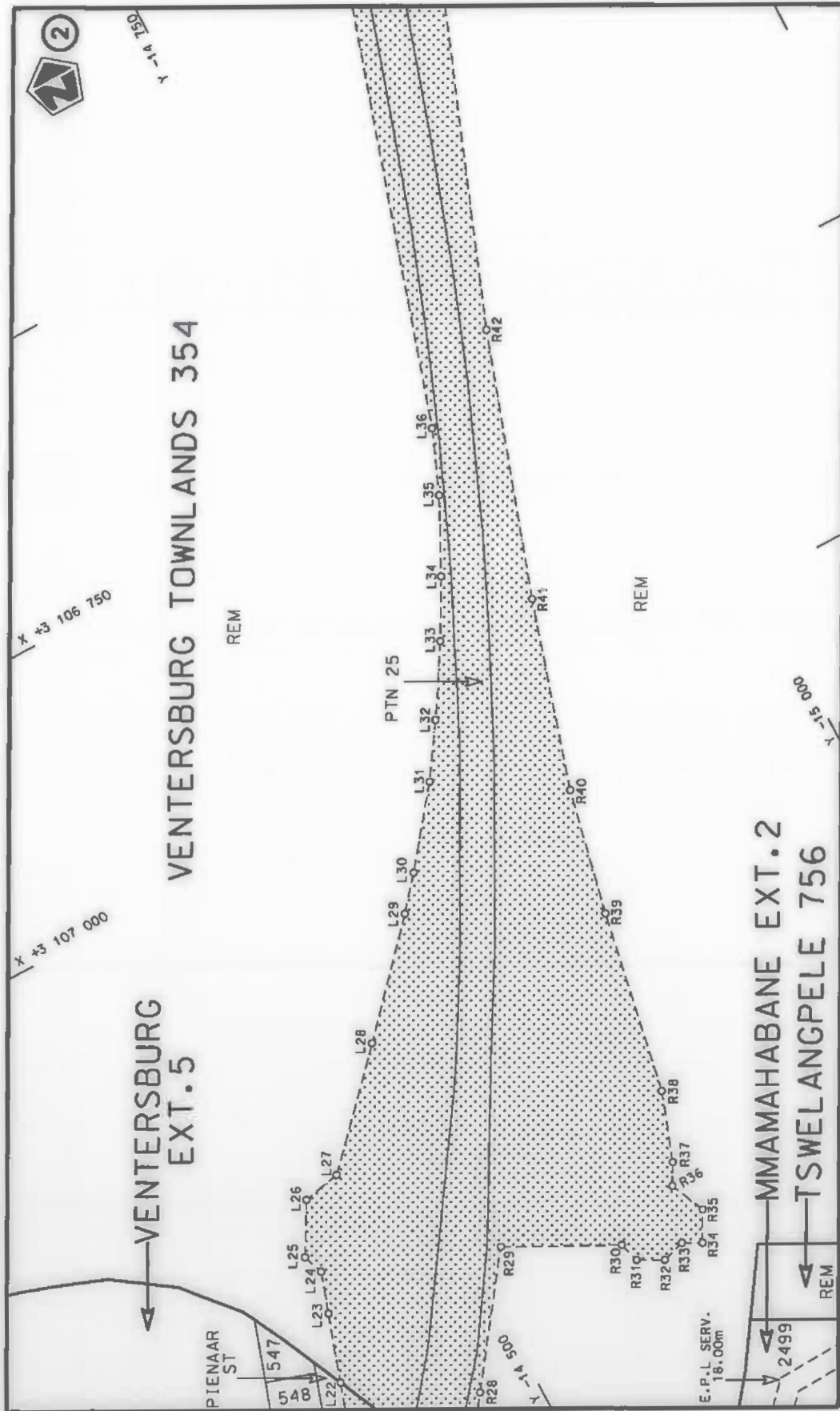
WYSIGING VAN VERKLARING No. 1086 VAN 2007.

Kragtens Artikel 40(1)(b) van die Wet op die Suid-Afrikaanse Nasionale Padagentskap Beperk en op Nasionale Paaie, 1998 (Wet No. 7 van 1998), wysig ek hiermee Verklaring No. 1086 van 2007 vanaf punte L173 en R168 op vel 4 van Plan No. P602/06 tot op die einde, deur alle velle van hulle respektiewelike Planne te vervang met meegaande velle 1 tot 16 van Plan No. P1053/18.

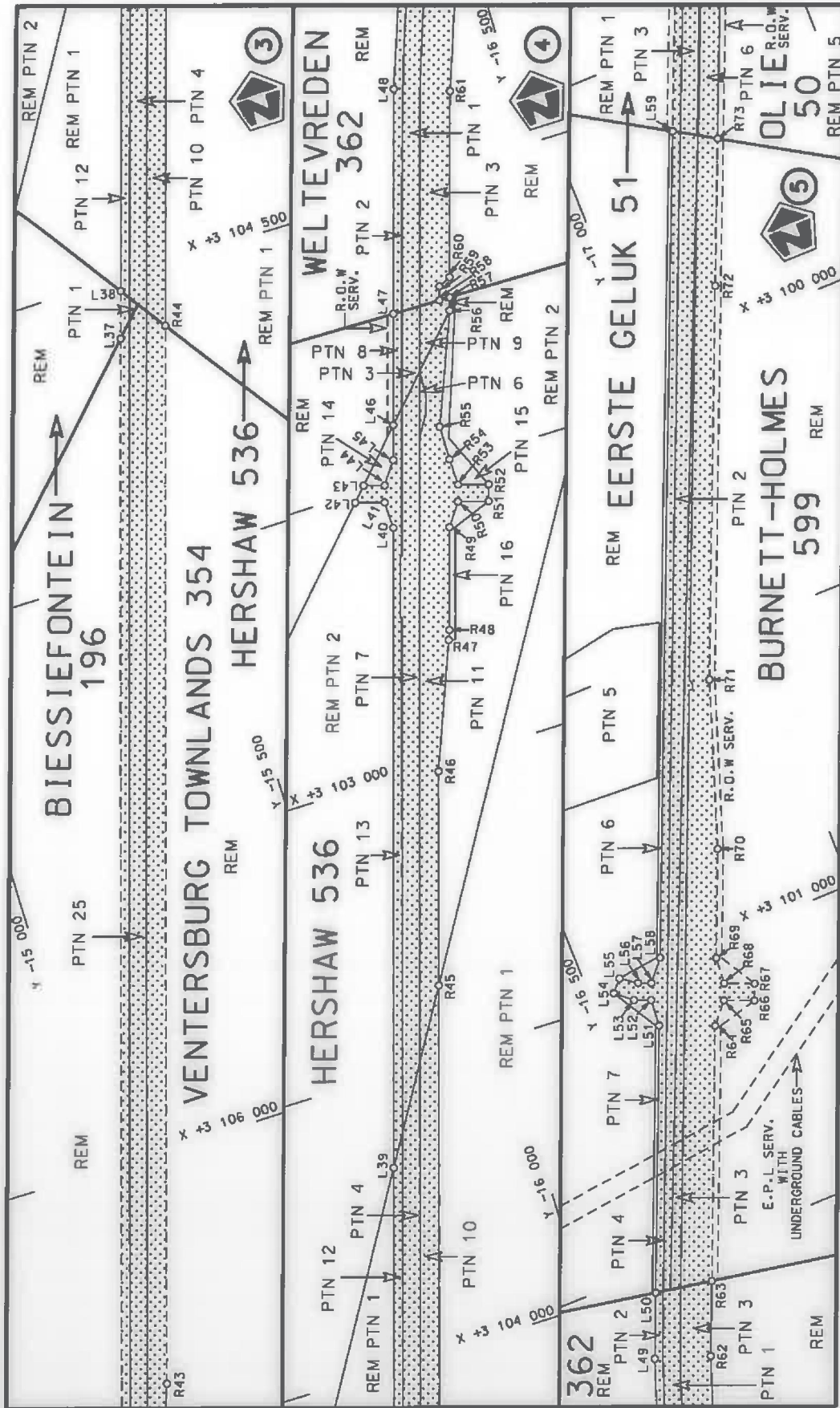
**(Nasionale Pad N1 Seksie 17X: Ventersburg – La Porte Vase)**  
MINISTER VAN VERVOER



<p>Die Suid Afrikaanse Nasionale Padagentskap MSB Bpk The South African National Roads Agency SOC Ltd</p>	<p>Die figuur getoon The figure shown</p>	<p>stede padreserwe voor van 'n gedeelte represents the road reserve of a portion van Nasionale Roete N1 of National Route N1</p>	<p>Vel Sheet 1 van af 16 Plan P1053/18</p>
---	---	---	--

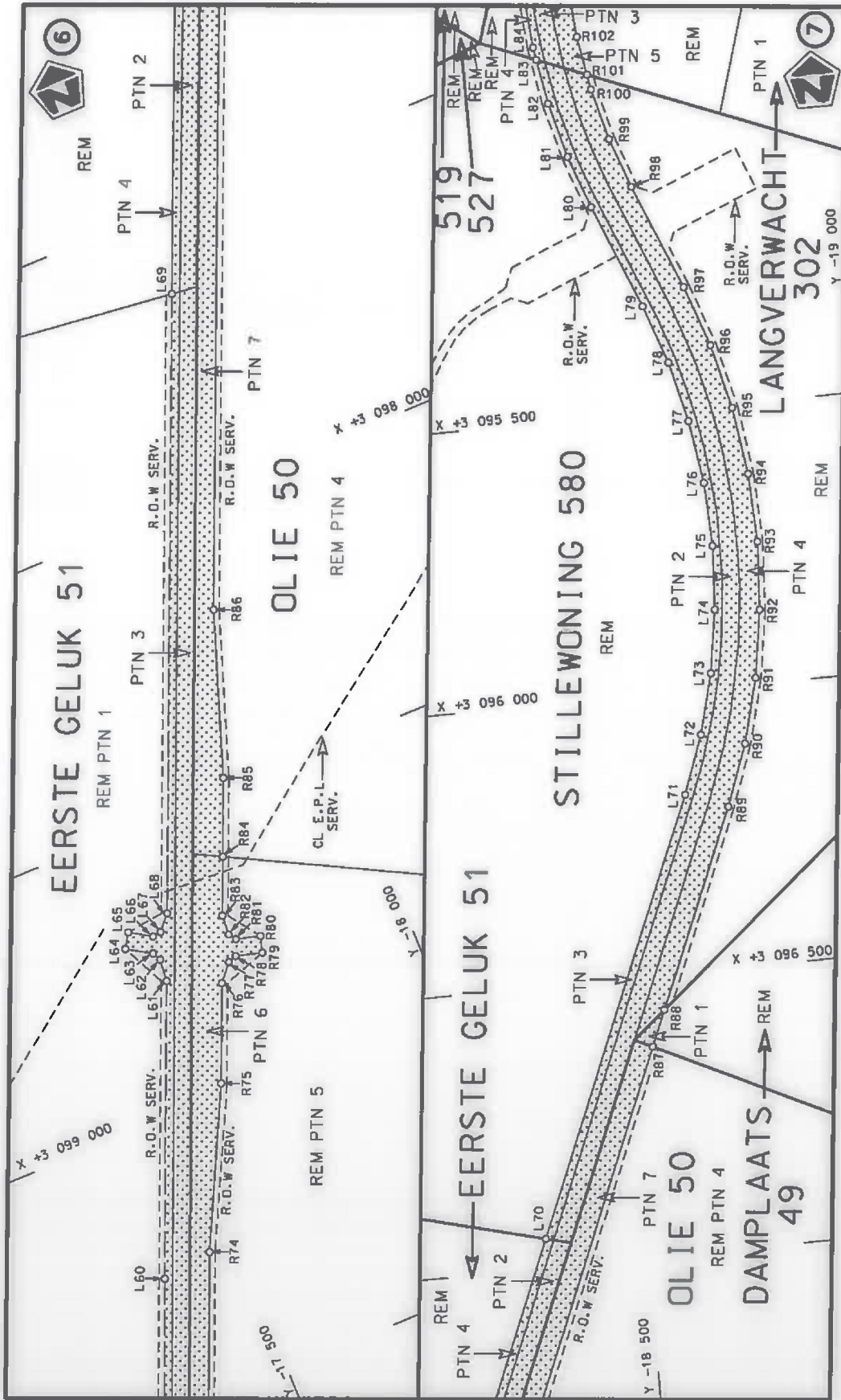


<p>Die Suid Afrikaanse Nasionale Padagentskap MSB Bpk The South African National Roads Agency SOC Ltd</p>	<p>Die figuur getoon The figure shown</p>	<p>stel die padreserwe voor van 'n gedeelte represents the road reserve of a portion van Nasionale Roete N1 of National Route N1</p> <p>17X</p>	<p>Vel Sheet 2 van 16 Plan P1053/18</p>
---	---	---	---

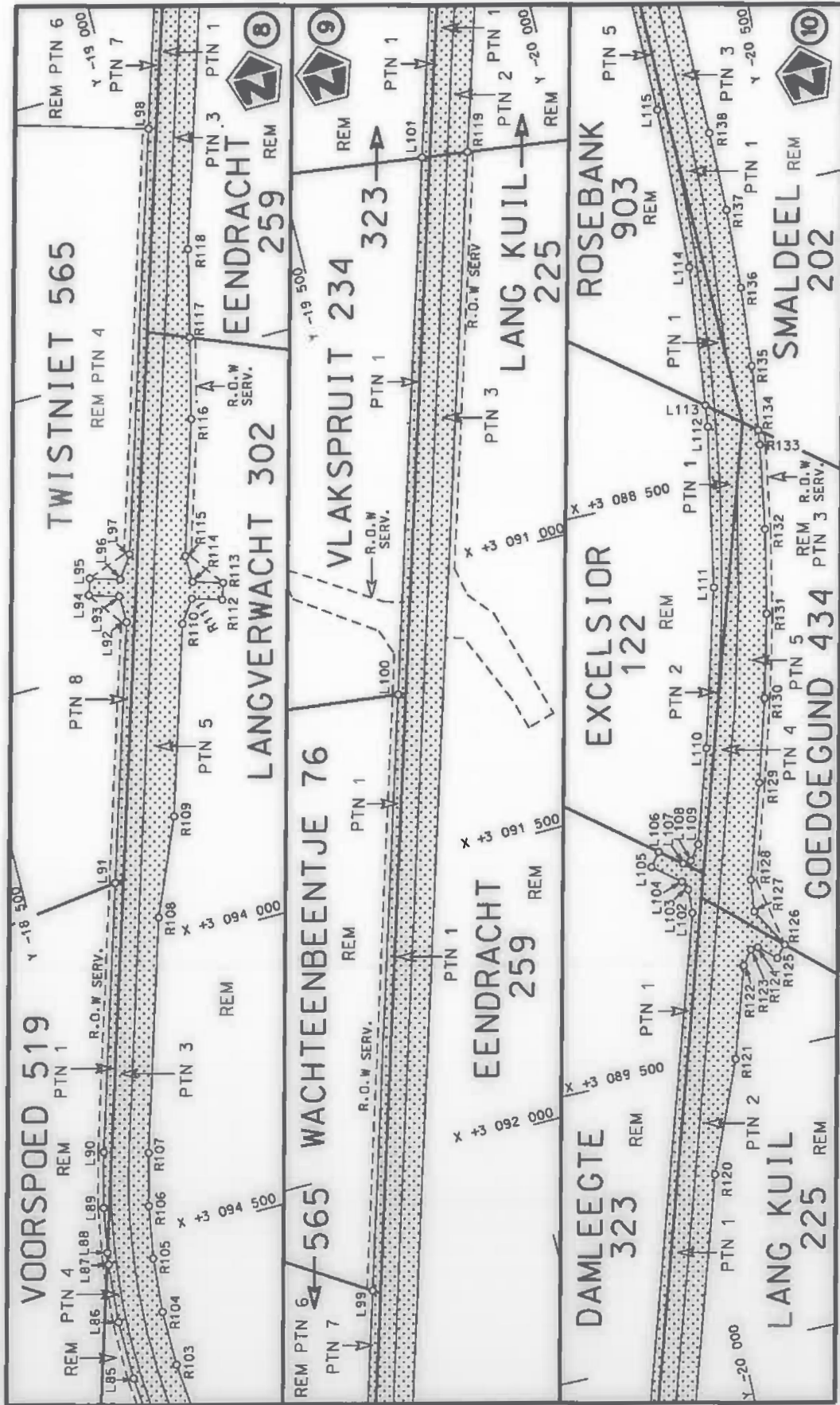


<p>Die Suid Afrikaanse Nasionale Padagentskap MSB Bpk The South African National Roads Agency SOC Ltd</p>	<p>Die figuur getoon The figure shown</p>	<p>stelt die padreserwe voor van 'n gedeelte represents the road reserve of a portion van Nasionale Roete N1 of National Route N1</p>	<p>Vel Sheet 3 of 16 Plan P1053/18</p>
---	---	---	--

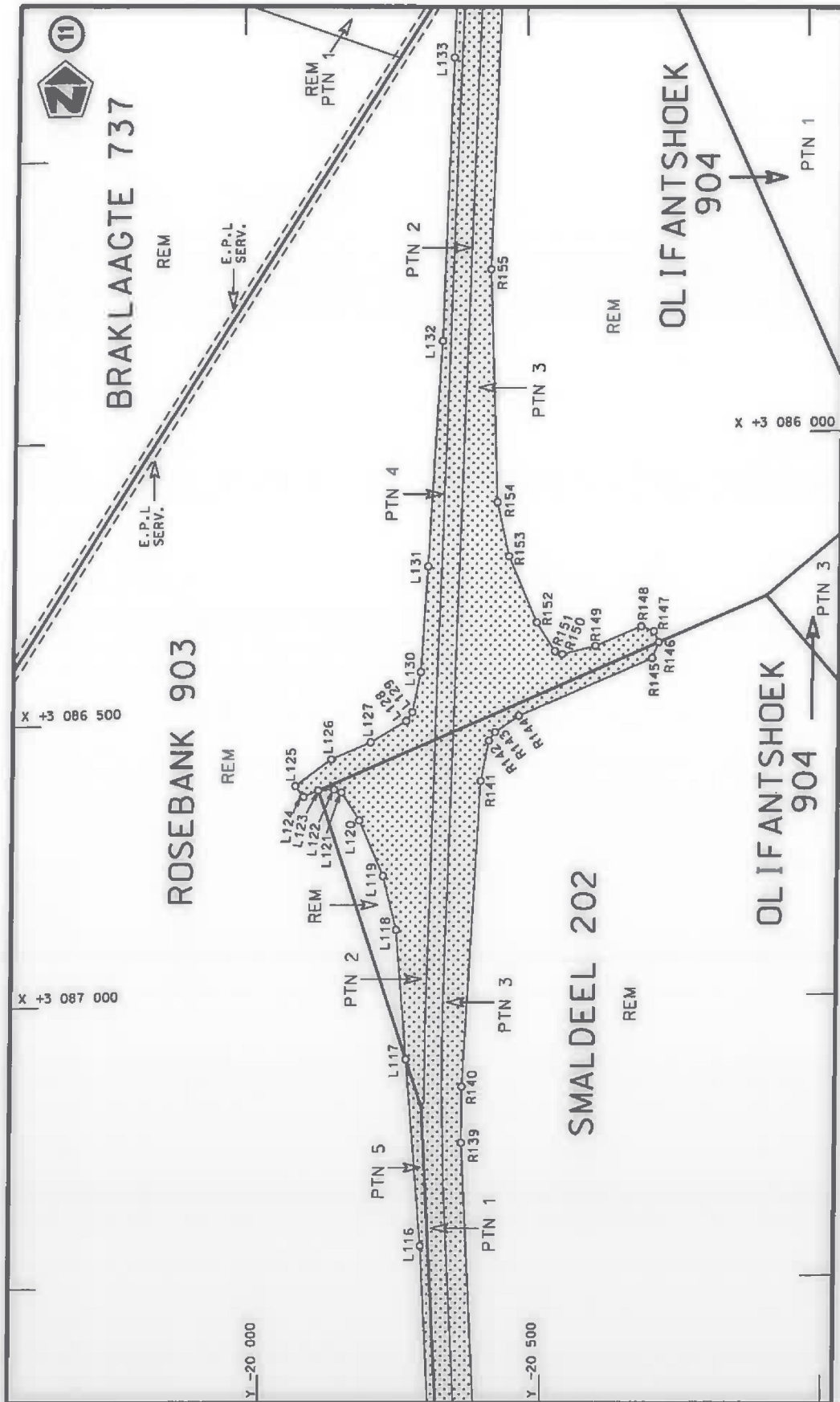





Die Suid Afrikaanse Nasionale Padogentskap MSB Bpk The South African National Roads Agency SOC Ltd	Die figuur getoon The figure shown		steldie padreserwe voor van 'n gedeelte represents the road reserve of a portion van Nasionale Roete N1 of National Route N1 Section	Vel Sheet 4 of 16
			17X	Plan P1053/18

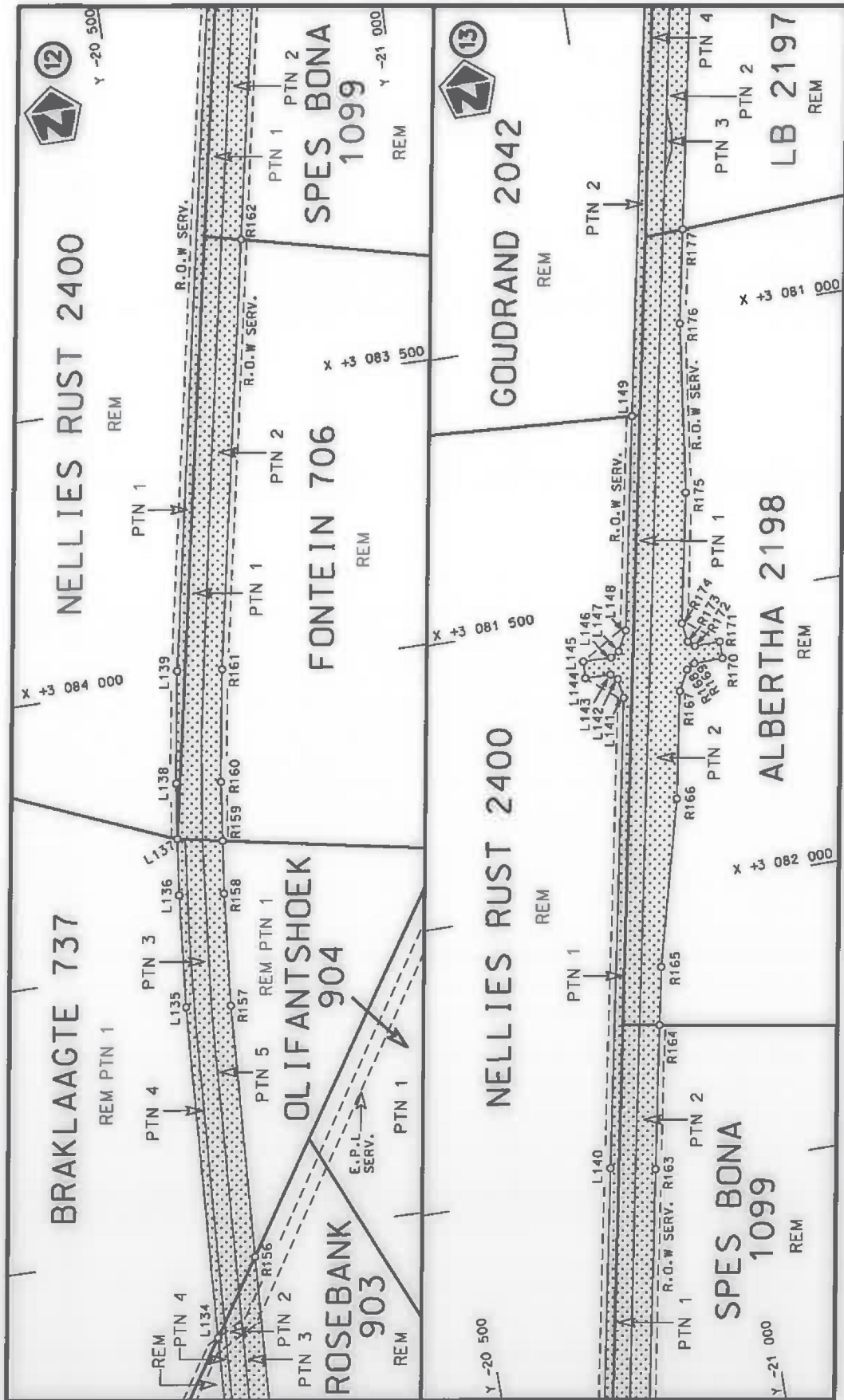


Die Suid Afrikaanse Nasionale Padagentskap MSB Bpk The South African National Roads Agency SOC Ltd	Die figuur getoon The figure shown	steldie padreserwe voor van 'n gedeelte represents the road reserve of a portion van Nasionale Roete N1 of National Route N1 Sektie Section 17X	Vel Sheet 5 of 16 Plan P1053/18
---	---------------------------------------	---	--

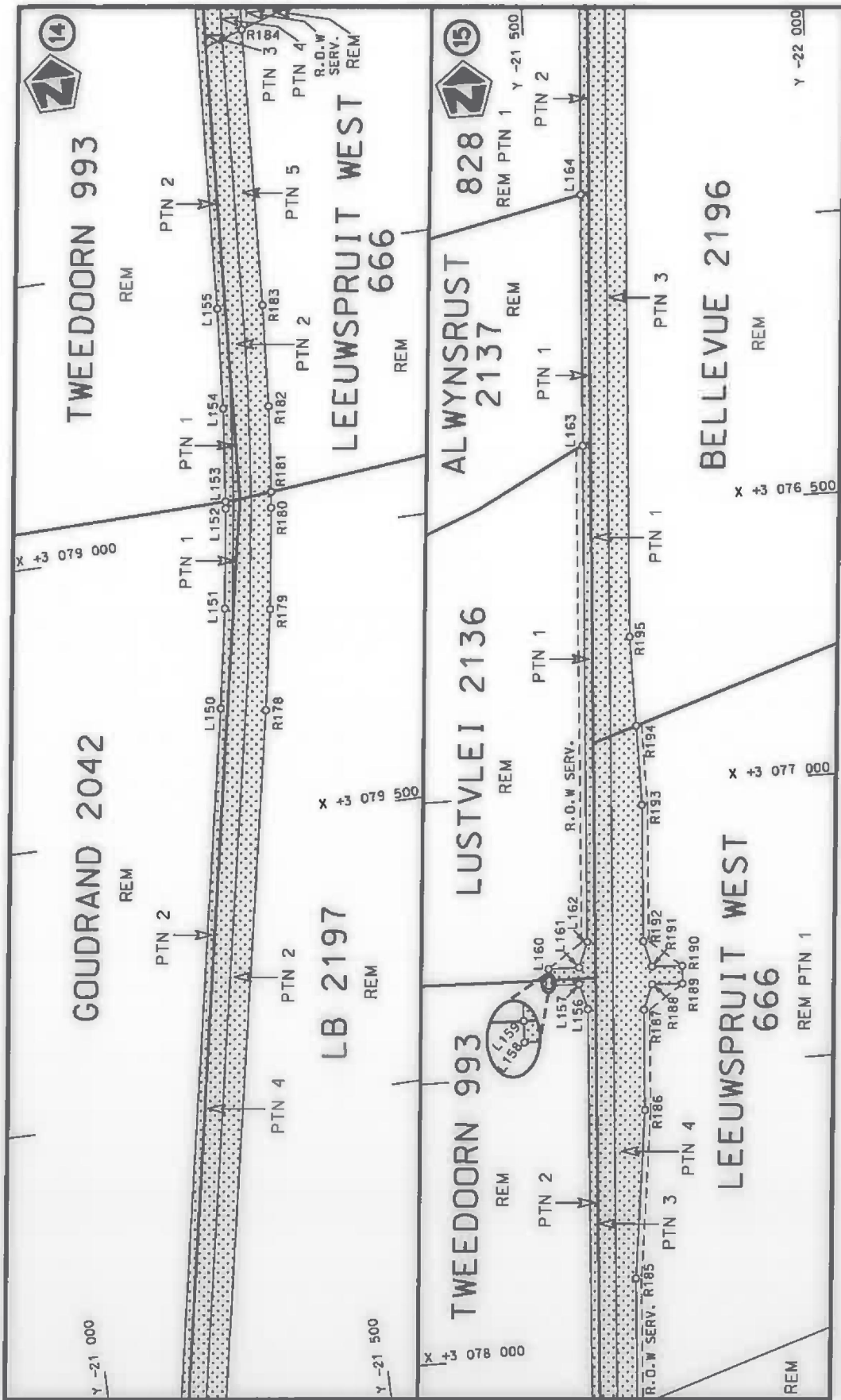


Die Suid Afrikaanse Nasionale Padogentenskap MSB Bpk The South African National Roads Agency SOC Ltd	Die figuur getoon The figure shown		stelt die padreserwe voor van 'n gedeelte represents the road reserve of a portion van Nasionale Roete N1 of National Route		Seksie Section 17X
			Vel Sheet 6	van of 16	

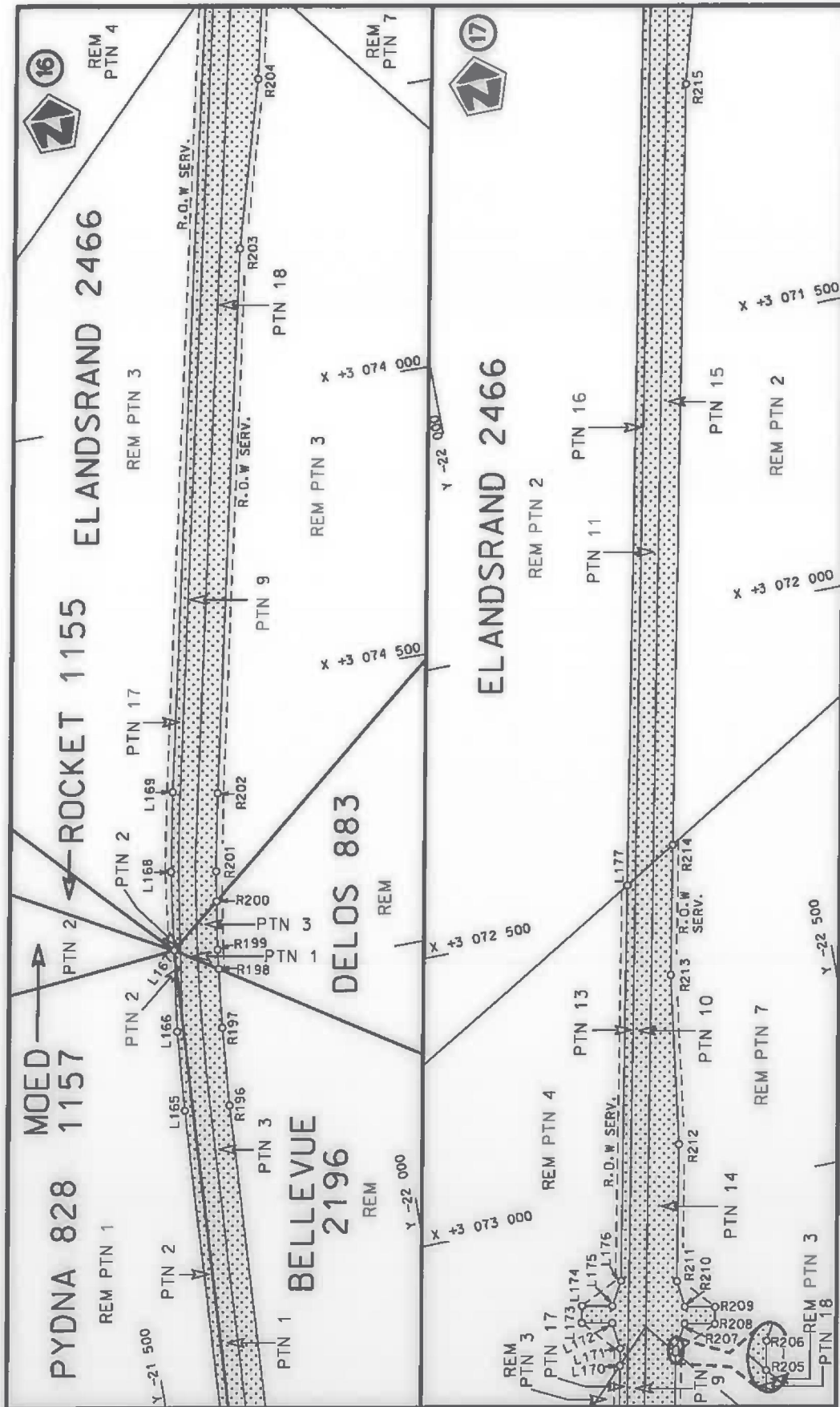




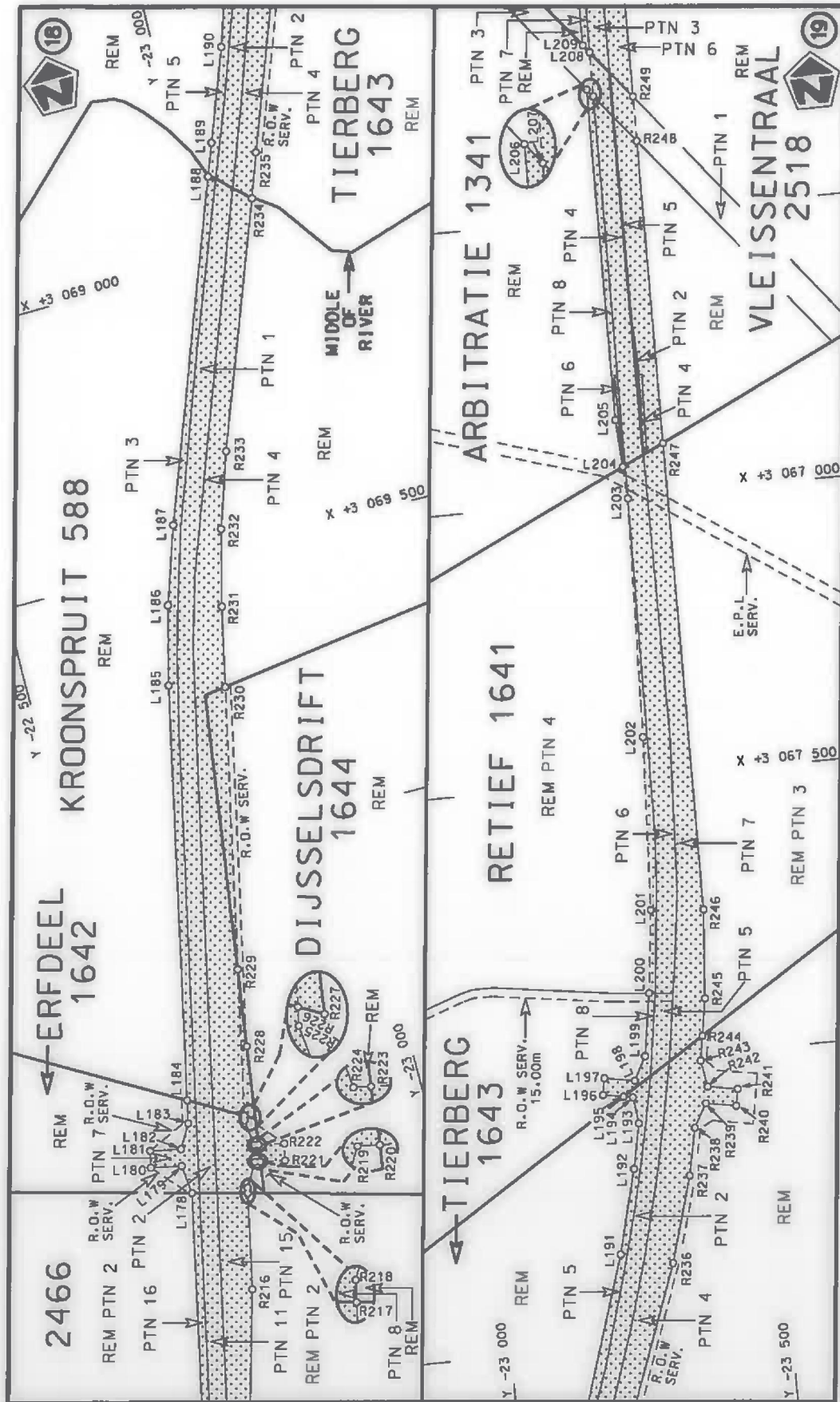
<p>Die Suid Afrikaanse Nasionale Padagentskap MSB Bpk The South African National Roads Agency SOC Ltd</p>	<p>Die figuur getoon The figure shown</p>	<p>stelt die padreserwe voor van 'n gedeelte represents the road reserve of a portion van Nasionale Roete N1 of National Route</p>	<p>Vel Sheet 7 van 16 Plan P1053/18</p>
---	---	--	---



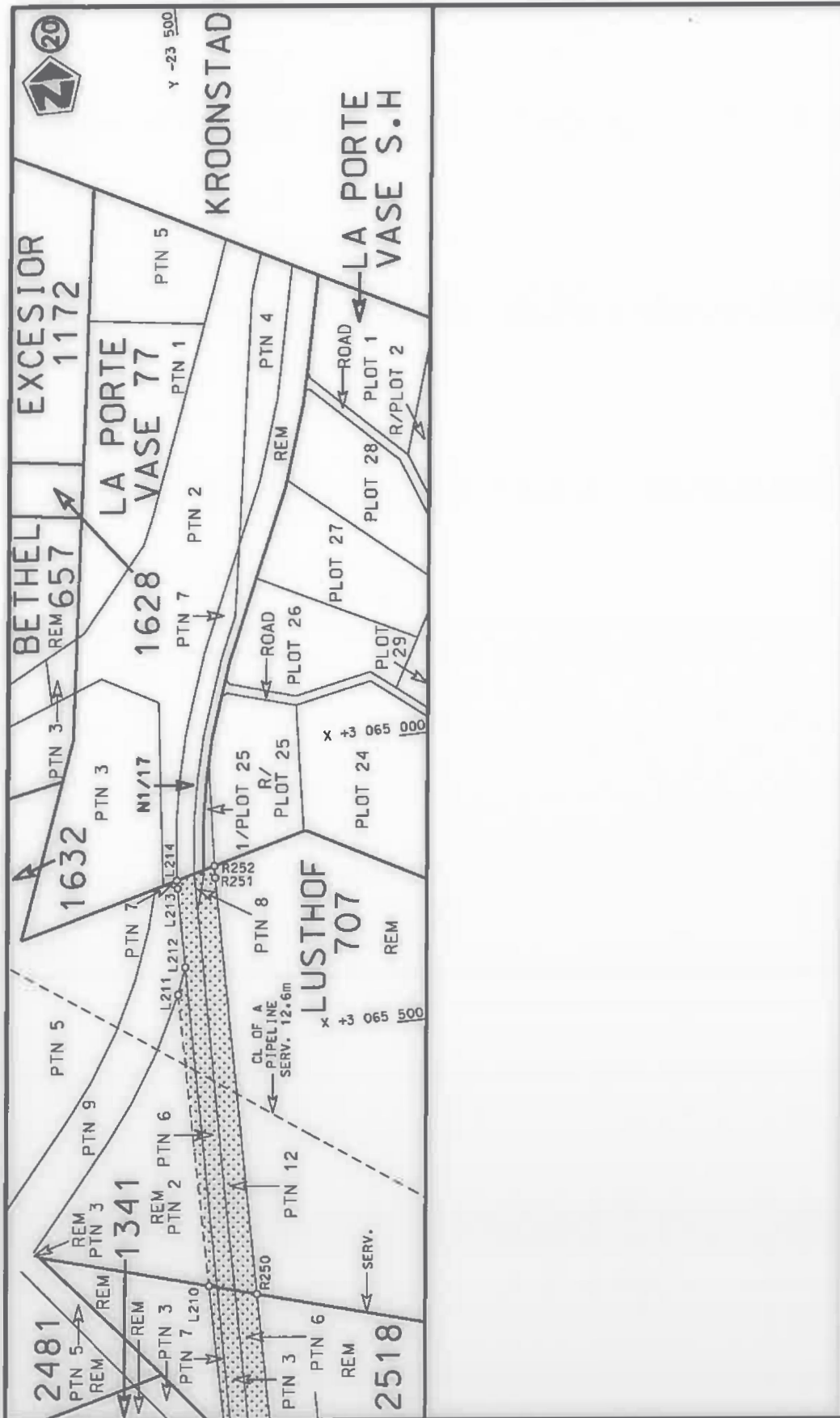
<p>Die Suid-Afrikaanse Nasionale Padagentskap MSB Bpk The South African National Roads Agency SOC Ltd</p>	<p>Die figuur getoon The figure shown</p>	<p>stel die padreserwe voor van 'n gedeelte represents the road reserve of a portion van Nasionale Roete N1 of National Route N1</p> <p>17X</p>	<p>Vel Sheet 8 van of 16 Plan P1053/18</p>
---	---	---	--

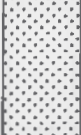


Die Suid Afrikaanse Nasionale Padgenietenskap MSB Bpk The South African National Roads Agency SOC Ltd	Die figuur getoon	stel die padreserwe voor van 'n gedeelte represents the road reserve of a portion van Nasionale Roete N1 of National Route Section	Vel Sheet 9 of 16
	The figure shown		Plan P1053/18







Die Suid Afrikaanse Nasionale Padagentskap MSB Bpk The South African National Roads Agency SOC Ltd	Die figuur getoon The figure shown		stel die padreserwe voor van 'n gedeelte represents the road reserve of a portion van Nasionale Roete N1 of National Route Section 17X	Vel Sheet 11 of 16 Plan P1053/18
---	---------------------------------------	---	---	-------------------------------------

PADRESERWE KOÖRDINATE / ROAD RESERVE CO-ORDINATES					
LINKERKANT/LEFT HAND SIDE			REGTERKANT/RIGHT HAND SIDE		
	Y	X	WG 27°	Y	X
L1	-13 833.54	3 108 230.76		R1	-13 910.80 3 108 295.39
L2	-13 874.18	3 108 174.67		R2	-13 909.16 3 108 286.89
L3	-13 966.25	3 108 047.60		R3	-13 907.51 3 108 278.34
L4	-14 003.50	3 107 996.20		R4	-13 927.34 3 108 236.23
L5	-14 046.26	3 107 937.17		R5	-13 976.20 3 108 167.98
L6	-14 094.29	3 107 870.88		R6	-13 990.02 3 108 148.68
L7	-14 131.18	3 107 819.84		R7	-14 008.20 3 108 131.23
L8	-14 232.29	3 107 680.00		R8	-14 037.16 3 108 093.30
L9	-14 249.18	3 107 672.31		R9	-14 055.41 3 108 090.54
L10	-14 252.80	3 107 667.28		R10	-14 063.47 3 108 079.73
L11	-14 253.24	3 107 661.81		R11	-14 189.53 3 107 910.75
L12	-14 249.70	3 107 655.92		R12	-14 212.50 3 107 879.96
L13	-14 267.48	3 107 631.34		R13	-14 209.96 3 107 865.56
L14	-14 266.11	3 107 630.35		R14	-14 210.93 3 107 855.45
L15	-14 272.21	3 107 629.57		R15	-14 236.05 3 107 821.40
L16	-14 271.58	3 107 625.67		R16	-14 277.70 3 107 762.82
L17	-14 288.01	3 107 602.99		R17	-14 277.34 3 107 753.92
L18	-14 307.02	3 107 576.76		R18	-14 295.38 3 107 730.07
L19	-14 316.28	3 107 548.22		R19	-14 304.14 3 107 729.76
L20	-14 325.53	3 107 519.69		R20	-14 314.25 3 107 716.19
L21	-14 332.63	3 107 497.81		R21	-14 337.30 3 107 710.37
L22	-14 346.83	3 107 454.60		R22	-14 355.02 3 107 708.07
L23	-14 365.95	3 107 395.46		R23	-14 363.93 3 107 677.71
L24	-14 377.56	3 107 359.54		R24	-14 361.45 3 107 675.29
L25	-14 370.98	3 107 341.70		R25	-14 359.82 3 107 670.96
L26	-14 395.85	3 107 297.22		R26	-14 354.64 3 107 657.24
L27	-14 429.51	3 107 290.34		R27	-14 377.48 3 107 618.94
L28	-14 511.39	3 107 202.01		R28	-14 451.30 3 107 520.85
L29	-14 589.99	3 107 114.45		R29	-14 527.51 3 107 415.40
L30	-14 613.68	3 107 085.83		R30	-14 622.38 3 107 464.51
L31	-14 663.43	3 107 021.49		R31	-14 627.90 3 107 482.57
L32	-14 693.47	3 106 975.51		R32	-14 649.98 3 107 494.29
L33	-14 729.44	3 106 915.74		R33	-14 670.28 3 107 488.09
L34	-14 756.68	3 106 865.45		R34	-14 686.52 3 107 496.71
L35	-14 788.32	3 106 801.08		R35	-14 700.40 3 107 470.60
L36	-14 810.28	3 106 745.77		R36	-14 686.31 3 107 439.46
L37	-15 460.48	3 104 603.38		R37	-14 696.30 3 107 420.93
L38	-15 484.83	3 104 523.13		R38	-14 717.00 3 107 360.59
L39	-15 746.45	3 103 661.09		R39	-14 745.89 3 107 197.90
L40	-16 075.33	3 102 577.43		R40	-14 769.08 3 107 086.55
L41	-16 074.05	3 102 530.01		R41	-14 817.79 3 106 921.02
L42	-16 023.95	3 102 514.81		R42	-14 892.75 3 106 691.33
L43	-16 046.82	3 102 490.42		R43	-15 001.22 3 106 397.11
L44	-16 082.76	3 102 501.31		R44	-15 543.36 3 104 605.75
L45	-16 110.18	3 102 462.60		R45	-15 916.53 3 103 376.15
L46	-16 128.02	3 102 403.82		R46	-16 026.53 3 103 013.59
L47	-16 185.07	3 102 215.86		R47	-16 111.29 3 102 796.53
L48	-16 300.29	3 101 836.21		R48	-16 117.70 3 102 780.10
L49	-16 367.71	3 101 648.18		R49	-16 170.48 3 102 606.30
L50	-16 412.53	3 101 540.34		R50	-16 197.87 3 102 567.53
L51	-16 594.24	3 101 103.13		R51	-16 249.54 3 102 583.28

Vel	12	Van	16	P1053/18
Sheet		of		

PADRESERWE KOÖRDINATE / ROAD RESERVE CO-ORDINATES											
LINKERKANT/LEFT HAND SIDE					REGTERKANT/RIGHT HAND SIDE						
	Y		X	WG 27°		Y		X			
L52	-16	597.69	3	101	055.78	R52	-16	258.25	3	102	554.57
L53	-16	569.81	3	101	044.24	R53	-16	206.58	3	102	538.89
L54	-16	541.12	3	101	019.31	R54	-16	205.30	3	102	491.47
L55	-16	560.14	3	100	999.05	R55	-16	205.30	3	102	431.47
L56	-16	587.60	3	101	019.10	R56	-16	281.60	3	102	240.04
L57	-16	609.18	3	101	028.11	R57	-16	288.34	3	102	217.85
L58	-16	640.31	3	100	992.11	R58	-16	269.46	3	102	217.49
L59	-17	201.00	3	099	643.24	R59	-16	276.62	3	102	193.89
L60	-17	357.95	3	099	265.62	R60	-16	298.47	3	102	183.60
L61	-17	561.60	3	098	775.65	R61	-16	393.97	3	101	869.80
L62	-17	565.23	3	098	736.11	R62	-16	461.38	3	101	681.70
L63	-17	557.66	3	098	720.86	R63	-16	512.48	3	101	558.86
L64	-17	515.32	3	098	694.43	R64	-16	686.04	3	101	141.28
L65	-17	531.21	3	098	668.98	R65	-16	717.16	3	101	105.48
L66	-17	569.33	3	098	692.78	R66	-16	767.02	3	101	126.21
L67	-17	584.47	3	098	690.61	R67	-16	778.54	3	101	098.50
L68	-17	607.81	3	098	664.46	R68	-16	728.67	3	101	077.78
L69	-18	030.64	3	097	647.10	R69	-16	732.09	3	101	030.47
L70	-18	321.27	3	096	947.85	R70	-16	806.09	3	100	852.42
L71	-18	638.75	3	096	183.95	R71	-16	903.11	3	100	568.45
L72	-18	676.14	3	096	080.06	R72	-17	170.27	3	099	925.63
L73	-18	703.28	3	095	973.04	R73	-17	270.09	3	099	685.44
L74	-18	720.25	3	095	860.87	R74	-17	449.86	3	099	252.92
L75	-18	725.98	3	095	747.56	R75	-17	583.02	3	098	982.79
L76	-18	720.40	3	095	634.25	R76	-17	651.73	3	098	817.77
L77	-18	702.58	3	095	522.05	R77	-17	677.00	3	098	787.87
L78	-18	676.58	3	095	415.00	R78	-17	692.99	3	098	782.80
L79	-18	639.33	3	095	311.06	R79	-17	739.55	3	098	795.82
L80	-18	562.94	3	095	126.57	R80	-17	747.69	3	098	766.77
L81	-18	528.91	3	095	033.40	R81	-17	704.69	3	098	755.00
L82	-18	502.43	3	094	936.00	R82	-17	695.67	3	098	742.34
L83	-18	487.93	3	094	856.29	R83	-17	697.87	3	098	706.75
L84	-18	483.91	3	094	833.99	R84	-17	738.30	3	098	609.79
L85	-18	474.33	3	094	730.70	R85	-17	792.00	3	098	480.27
L86	-18	473.78	3	094	626.97	R86	-17	889.01	3	098	196.30
L87	-18	482.25	3	094	523.63	R87	-18	541.82	3	096	625.63
L88	-18	485.81	3	094	502.60	R88	-18	568.34	3	096	561.80
L89	-18	499.10	3	094	424.11	R89	-18	713.37	3	096	212.86
L90	-18	523.88	3	094	328.07	R90	-18	752.72	3	096	103.49
L91	-18	662.80	3	093	870.56	R91	-18	781.80	3	095	988.90
L92	-18	797.22	3	093	427.78	R92	-18	799.95	3	095	868.89
L93	-18	796.00	3	093	380.31	R93	-18	806.28	3	095	747.51
L94	-18	744.27	3	093	364.52	R94	-18	800.19	3	095	626.21
L95	-18	753.09	3	093	335.82	R95	-18	782.09	3	095	506.13
L96	-18	804.72	3	093	351.61	R96	-18	753.24	3	095	391.54
L97	-18	832.14	3	093	312.91	R97	-18	714.64	3	095	283.98
L98	-19	051.11	3	092	591.82	R98	-18	637.50	3	095	097.54
L99	-19	166.39	3	092	211.52	R99	-18	605.23	3	095	008.99
L100	-19	474.09	3	091	198.90	R100	-18	580.53	3	094	918.21
L101	-19	750.63	3	090	288.26	R101	-18	575.62	3	094	891.27
L102	-20	071.64	3	089	231.09	R102	-18	563.25	3	094	822.99

Vel Sheet	13	Van of	16	P1053/18
-----------	----	--------	----	----------

PADRESERWE KOÖRDINATE / ROAD RESERVE CO-ORDINATES						
LINKERKANT/LEFT HAND SIDE				REGTERKANT/RIGHT HAND SIDE		
	Y	X	WG 27°		Y	X
L103	-20 072.64	3 089 188.82		R103	-18 554.31	3 094 726.79
L104	-20 064.98	3 089 172.69		R104	-18 553.99	3 094 629.99
L105	-20 017.29	3 089 135.62		R105	-18 561.72	3 094 533.52
L106	-20 035.52	3 089 112.20		R106	-18 577.50	3 094 441.04
L107	-20 073.84	3 089 142.00		R107	-18 600.92	3 094 349.69
L108	-20 088.14	3 089 140.02		R108	-18 722.26	3 093 950.10
L109	-20 107.13	3 089 114.20		R109	-18 793.22	3 093 783.35
L110	-20 156.83	3 088 950.58		R110	-18 892.39	3 093 456.61
L111	-20 228.36	3 088 674.71		R111	-18 919.82	3 093 417.91
L112	-20 277.00	3 088 393.94		R112	-18 971.49	3 093 433.60
L113	-20 280.46	3 088 355.55		R113	-18 980.20	3 093 404.90
L114	-20 302.46	3 088 110.16		R114	-18 928.53	3 093 389.21
L115	-20 304.35	3 087 825.15		R115	-18 927.26	3 093 341.79
L116	-20 291.28	3 087 435.23		R116	-18 997.81	3 093 109.45
L117	-20 269.49	3 087 103.12		R117	-19 030.79	3 092 968.76
L118	-20 254.37	3 086 872.66		R118	-19 066.25	3 092 816.55
L119	-20 232.25	3 086 776.34		R119	-19 830.86	3 090 299.35
L120	-20 191.18	3 086 676.83		R120	-20 014.67	3 089 694.03
L121	-20 159.94	3 086 626.60		R121	-20 093.30	3 089 501.87
L122	-20 146.87	3 086 621.31		R122	-20 141.70	3 089 342.48
L123	-20 118.96	3 086 622.25		R123	-20 160.07	3 089 317.45
L124	-20 092.42	3 086 633.25		R124	-20 173.46	3 089 316.03
L125	-20 078.26	3 086 613.66		R125	-20 203.15	3 089 342.39
L126	-20 142.37	3 086 567.34		R126	-20 221.14	3 089 321.84
L127	-20 212.75	3 086 538.48		R127	-20 180.28	3 089 252.51
L128	-20 275.74	3 086 501.84		R128	-20 186.08	3 089 196.42
L129	-20 286.96	3 086 486.43		R129	-20 236.42	3 089 031.00
L130	-20 302.47	3 086 415.22		R130	-20 276.80	3 088 886.57
L131	-20 316.91	3 086 227.63		R131	-20 311.17	3 088 740.54
L132	-20 345.58	3 085 828.21		R132	-20 339.27	3 088 593.19
L133	-20 369.25	3 085 326.09		R133	-20 361.14	3 088 444.78
L134	-20 376.74	3 085 165.62		R134	-20 363.86	3 088 419.11
L135	-20 404.15	3 084 574.26		R135	-20 375.81	3 088 305.44
L136	-20 420.40	3 084 375.04		R136	-20 384.96	3 088 165.48
L137	-20 431.60	3 084 275.73		R137	-20 388.47	3 088 025.42
L138	-20 443.47	3 084 177.35		R138	-20 386.58	3 087 885.49
L139	-20 473.51	3 083 979.74		R139	-20 365.16	3 087 253.32
L140	-20 756.53	3 082 472.70		R140	-20 367.12	3 087 153.42
L141	-20 912.77	3 081 649.82		R141	-20 405.92	3 086 610.42
L142	-20 907.63	3 081 615.10		R142	-20 420.99	3 086 539.27
L143	-20 896.17	3 081 604.94		R143	-20 432.16	3 086 524.16
L144	-20 851.29	3 081 603.75		R144	-20 474.54	3 086 496.03
L145	-20 852.08	3 081 573.76		R145	-20 713.74	3 086 397.89
L146	-20 901.84	3 081 575.09		R146	-20 725.63	3 086 369.71
L147	-20 916.55	3 081 566.53		R147	-20 717.44	3 086 350.20
L148	-20 935.23	3 081 531.54		R148	-20 694.90	3 086 340.77
L149	-21 006.23	3 081 157.59		R149	-20 612.74	3 086 374.45
L150	-21 360.20	3 079 293.37		R150	-20 553.44	3 086 387.97
L151	-21 390.43	3 079 118.08		R151	-20 540.34	3 086 382.52
L152	-21 414.72	3 078 941.87		R152	-20 508.37	3 086 330.79
L153	-21 416.01	3 078 929.38		R153	-20 459.73	3 086 212.17

Vel  
Sheet

14

Van  
of

16

P1053/18



PADRESERWE KOÖRDINATE / ROAD RESERVE CO-ORDINATES							
LINKERKANT/LEFT HAND SIDE				REGTERKANT/RIGHT HAND SIDE			
	Y	X	WG 27°		Y	X	
L154	-21 433.05	3 078 764.95		R154	-20 439.77	3 086 115.92	
L155	-21 445.40	3 078 587.50		R155	-20 431.54	3 085 702.47	
L156	-21 508.57	3 077 387.53		R156	-20 462.82	3 085 032.78	
L157	-21 495.94	3 077 342.25		R157	-20 483.80	3 084 583.55	
L158	-21 442.88	3 077 341.04		R158	-20 500.06	3 084 384.34	
L159	-21 443.10	3 077 331.49		R159	-20 510.96	3 084 290.84	
L160	-21 443.57	3 077 311.05		R160	-20 523.12	3 084 186.64	
L161	-21 497.52	3 077 312.32		R161	-20 553.17	3 083 989.03	
L162	-21 514.88	3 077 267.69		R162	-20 694.21	3 083 237.99	
L163	-21 561.35	3 076 385.05		R163	-20 835.14	3 082 487.55	
L164	-21 584.84	3 075 938.98		R164	-20 883.01	3 082 235.40	
L165	-21 622.62	3 075 221.23		R165	-20 902.34	3 082 133.60	
L166	-21 632.78	3 075 080.68		R166	-20 977.36	3 081 842.49	
L167	-21 651.84	3 074 937.94		R167	-21 013.04	3 081 654.60	
L168	-21 669.69	3 074 799.77		R168	-21 031.77	3 081 619.07	
L169	-21 696.19	3 074 661.37		R169	-21 046.43	3 081 610.12	
L170	-21 989.32	3 073 277.25		R170	-21 097.84	3 081 609.65	
L171	-21 995.63	3 073 247.46		R171	-21 097.52	3 081 579.56	
L172	-21 990.28	3 073 200.33		R172	-21 052.14	3 081 580.05	
L173	-21 937.45	3 073 189.14		R173	-21 040.66	3 081 570.27	
L174	-21 943.67	3 073 159.79		R174	-21 035.54	3 081 536.11	
L175	-21 996.50	3 073 170.98		R175	-21 078.89	3 081 307.80	
L176	-22 020.49	3 073 130.06		R176	-21 115.79	3 081 009.44	
L177	-22 165.70	3 072 444.44		R177	-21 147.04	3 080 844.86	
L178	-22 559.59	3 070 591.28		R178	-21 438.92	3 079 307.63	
L179	-22 553.74	3 070 539.78		R179	-21 469.49	3 079 130.34	
L180	-22 500.91	3 070 528.59		R180	-21 494.15	3 078 951.46	
L181	-22 507.12	3 070 499.25		R181	-21 498.01	3 078 923.49	
L182	-22 559.95	3 070 510.43		R182	-21 512.84	3 078 771.78	
L183	-22 583.95	3 070 469.52		R183	-21 525.26	3 078 592.30	
L184	-22 592.50	3 070 429.13		R184	-21 551.10	3 078 101.41	
L185	-22 745.51	3 069 706.65		R185	-21 563.12	3 077 873.02	
L186	-22 779.96	3 069 568.35		R186	-21 598.21	3 077 574.45	
L187	-22 824.13	3 069 432.84		R187	-21 607.68	3 077 395.65	
L188	-23 037.19	3 068 849.99		R188	-21 625.03	3 077 351.45	
L189	-23 057.87	3 068 793.41		R189	-21 678.97	3 077 354.09	
L190	-23 116.41	3 068 633.30		R190	-21 680.64	3 077 322.39	
L191	-23 209.42	3 068 339.94		R191	-21 626.71	3 077 319.55	
L192	-23 246.29	3 068 190.51		R192	-21 614.10	3 077 273.82	
L193	-23 262.30	3 068 110.51		R193	-21 626.88	3 077 030.96	
L194	-23 256.38	3 068 063.70		R194	-21 625.18	3 076 889.67	
L195	-23 239.79	3 068 060.69		R195	-21 623.52	3 076 730.48	
L196	-23 203.89	3 068 054.14		R196	-21 702.45	3 075 226.08	
L197	-23 209.26	3 068 024.63		R197	-21 712.50	3 075 087.89	
L198	-23 262.29	3 068 034.28		R198	-21 724.02	3 074 984.33	
L199	-23 283.93	3 067 992.50		R199	-21 727.83	3 074 950.29	
L200	-23 301.03	3 067 881.75		R200	-21 740.62	3 074 865.74	
L201	-23 317.55	3 067 734.59		R201	-21 748.55	3 074 813.28	
L202	-23 331.84	3 067 427.17		R202	-21 774.61	3 074 677.18	
L203	-23 343.14	3 067 002.11		R203	-21 974.15	3 073 735.02	
L204	-23 339.24	3 066 945.22		R204	-22 055.28	3 073 445.55	

Vel Sheet	15	Van of	16
--------------	----	-----------	----

P1053/18

PADRESERWE KOÖRDINATE / ROAD RESERVE CO-ORDINATES					
LINKERKANT/LEFT HAND SIDE			REGTERKANT/RIGHT HAND SIDE		
	Y	X	WG 27°	Y	X
L205	-23 333.55	3 066 861.17		R205	-22 091.56 3 073 274.39
L206	-23 335.31	3 066 272.46		R206	-22 092.87 3 073 268.05
L207	-23 345.64	3 066 285.38		R207	-22 116.87 3 073 227.14
L208	-23 346.06	3 066 206.96		R208	-22 169.70 3 073 238.33
L209	-23 335.00	3 066 193.54		R209	-22 175.92 3 073 208.98
L210	-23 333.96	3 065 923.87		R210	-22 123.09 3 073 197.79
L211	-23 332.01	3 065 409.21		R211	-22 117.74 3 073 150.66
L212	-23 349.71	3 065 362.65		R212	-22 168.04 3 072 913.11
L213	-23 350.17	3 065 223.82		R213	-22 211.22 3 072 615.60
L214	-23 350.22	3 065 209.69		R214	-22 258.95 3 072 390.20
				R215	-22 537.72 3 071 074.41
				R216	-22 618.89 3 070 784.90
				R217	-22 654.23 3 070 617.33
				R218	-22 656.33 3 070 607.51
				R219	-22 680.33 3 070 566.59
				R220	-22 690.05 3 070 568.65
				R221	-22 733.16 3 070 577.79
				R222	-22 739.38 3 070 548.44
				R223	-22 694.15 3 070 538.86
				R224	-22 686.55 3 070 537.24
				R225	-22 681.19 3 070 490.11
				R226	-22 682.95 3 070 481.82
				R227	-22 700.59 3 070 492.10
				R228	-22 718.19 3 070 363.69
				R229	-22 736.91 3 070 227.02
				R230	-22 841.07 3 069 735.20
				R231	-22 870.70 3 069 595.31
				R232	-22 904.01 3 069 461.60
				R233	-22 946.85 3 069 330.14
				R234	-23 102.57 3 068 907.41
				R235	-23 129.53 3 068 830.38
				R236	-23 299.90 3 068 364.36
				R237	-23 343.22 3 068 212.20
				R238	-23 360.13 3 068 128.33
				R239	-23 383.78 3 068 086.91
				R240	-23 437.44 3 068 096.69
				R241	-23 442.81 3 068 067.17
				R242	-23 389.61 3 068 057.48
				R243	-23 381.78 3 068 010.32
				R244	-23 388.58 3 067 966.63
				R245	-23 398.85 3 067 900.75
				R246	-23 410.88 3 067 743.00
				R247	-23 413.37 3 066 910.24
				R248	-23 415.02 3 066 371.64
				R249	-23 415.25 3 066 292.66
				R250	-23 416.28 3 065 947.37
				R251	-23 418.48 3 065 212.38
				R252	-23 419.50 3 065 191.45

Vel Sheet	16	Van of	16	P1053/18
--------------	----	-----------	----	----------

## DEPARTMENT OF TRANSPORT

NO. 408

15 MARCH 2019

**THE SOUTH AFRICAN NATIONAL ROADS  
AGENCY SOC LIMITED**

Registration No: 1998/009584/30

**DECLARATION AMENDMENT OF NATIONAL ROAD N1 SECTION 24X**

AMENDMENT OF DECLARATION NO'S. 39 OF 1984 AND 99 OF 1986.

By virtue of section 40(1)(b) of The South African National Roads Agency Limited and National Roads Act, 1998 (Act No. 7 of 1998), I hereby amend (I) Declaration No. 39 of 1984 the section of the route from points L16 and R17 on sheet 2 of Plan No. P217/83 up to its end, (II) Declaration No. 99 of 1986, the section of the route from its start up to the common boundary between farms Middelfontein 564-KR and Groenvaley 563-KR on sheet 1 of Plan No. P354/86, by substituting all sheets of their respective Plans with the accompanying sheets 1 to 2 of Plan No. P1058/18.

**(National Road N1 Section 24X: Middelfontein – Groenvaley)**

---

MINISTER OF TRANSPORT