
GOVERNMENT NOTICES • GOEWERMENTSKENNISGEWINGS

DEPARTMENT OF TRANSPORT

NO. 405

15 MARCH 2019

**THE SOUTH AFRICAN NATIONAL ROADS
AGENCY SOC LIMITED****Registration No: 1998/009584/30**

DECLARATION AMENDMENT OF NATIONAL ROAD N1 SECTION 25

AMENDMENT OF DECLARATION No. 745 OF 2007.

By virtue of Section 40 (1)(b) of The South African National Roads Agency Limited and National Roads Act, 1998 (Act No. 7 of 1998), I hereby amend Declaration No. 745 of 2007 by substituting it in its entirety, with the accompanying sheets 1 to 32 of Plan No. P1059/18.

(National Road N1 Section 25: Middelfontein – Rietvley)

MINISTER OF TRANSPORT

DEPARTEMENT VAN VERVOER

NO. 405

15 MAART 2019

**DIE SUID-AFRIKAANSE NASIONALE
PADAGENTSKAP MSB BEPERK**

Registrasie No: 1998/009584/30

VERKLARING WYSIGING VAN NASIONALE PAD N1 SEKSIE 25

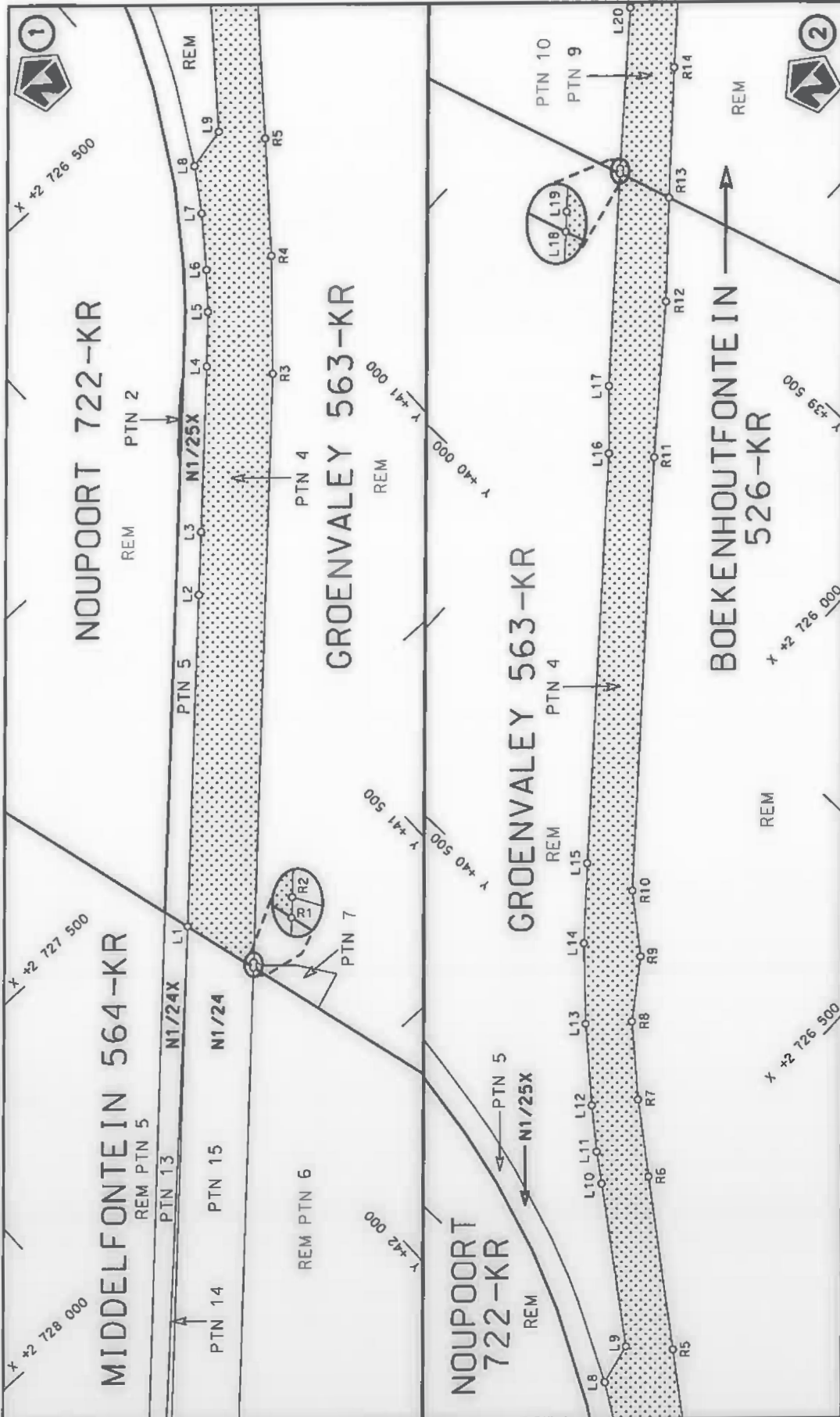
WYSIGING VAN VERKLARING No. 745 VAN 2007.


Kragtens Artikel 40(1)(b) van die Wet op die Suid-Afrikaanse Nasionale Padagentskap Beperk en op Nasionale Paaie, 1998 (Wet No. 7 van 1998), wysig ek hiermee Verklaring No. 745 van 2007 deur dit in sy geheel te vervang, met bygaande velle 1 tot 32 van Plan No. P1059/18.

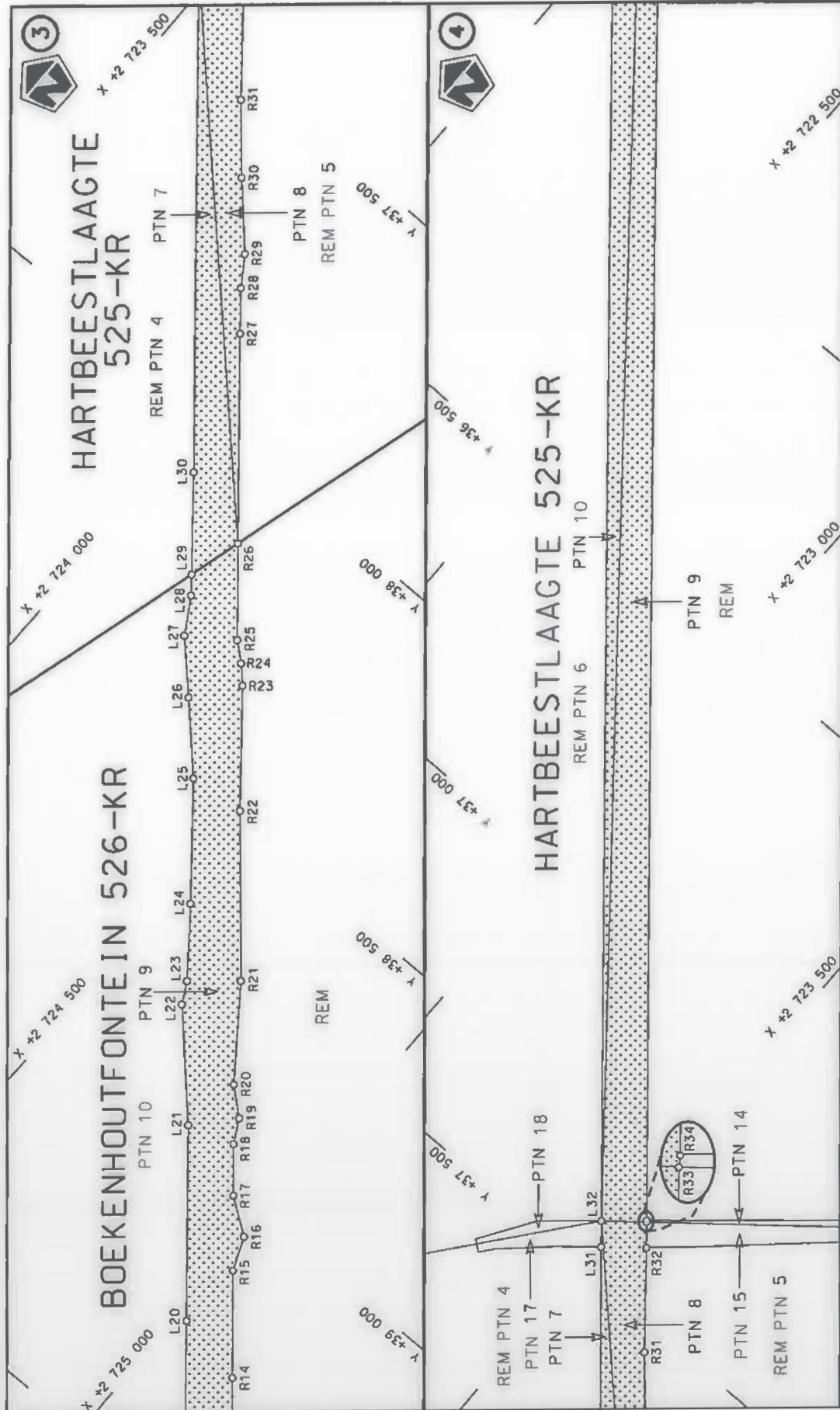
(Nasionale Pad N1 Seksie 25: Middelfontein – Rietvley)



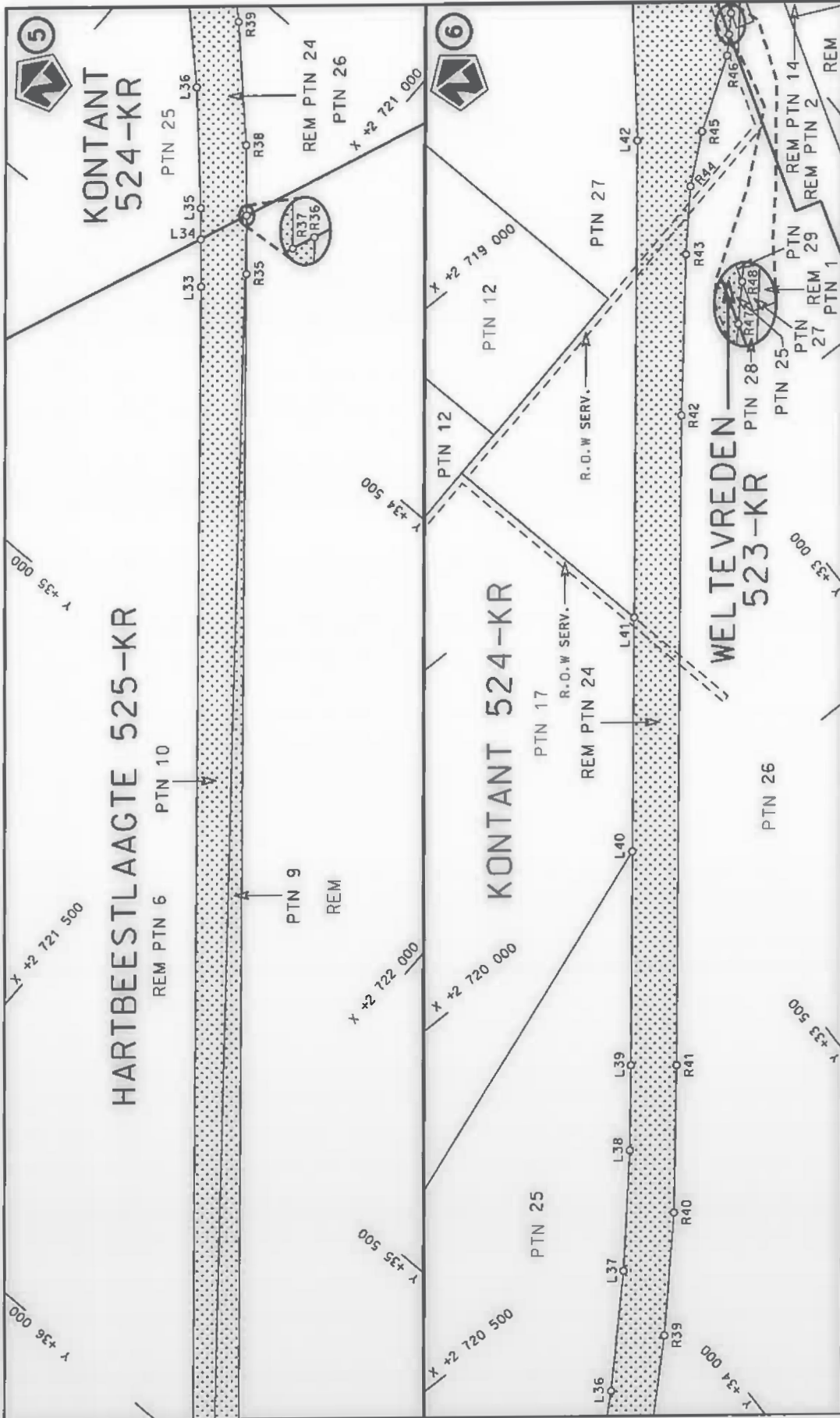
MINISTER VAN VERVOER



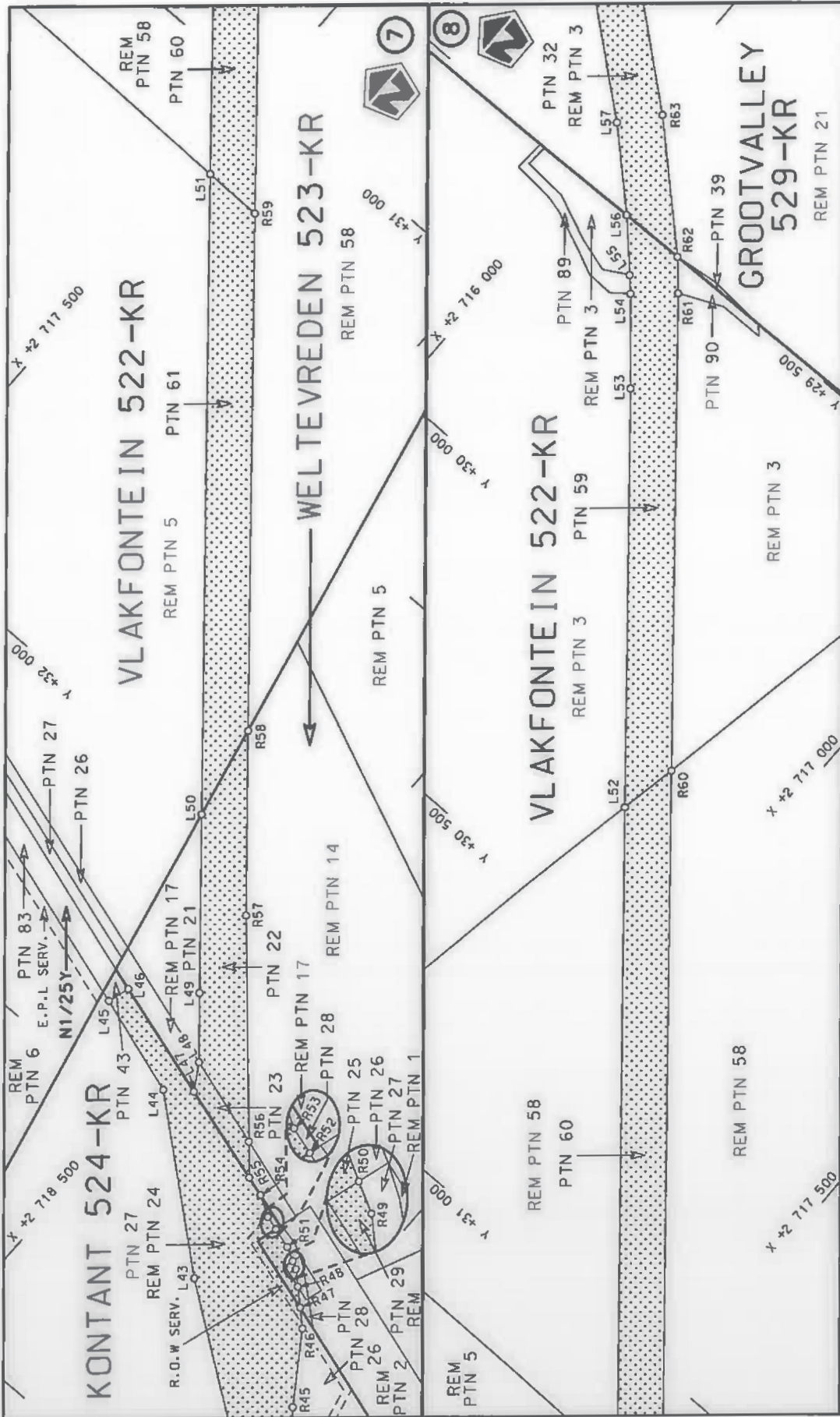
Die Suid Afrikaanse Nasionale Padagentskap MSB Bpk The South African National Roads Agency SOC Ltd	Die figuur getoon The figure shown		steldie padreserwe voor van 'n gedeelte represents the road reserve of a portion van Nasionale Roete N1 of National Route	
			25	25
Plan P1059/18		Vel Sheet 1 of 32	Section	




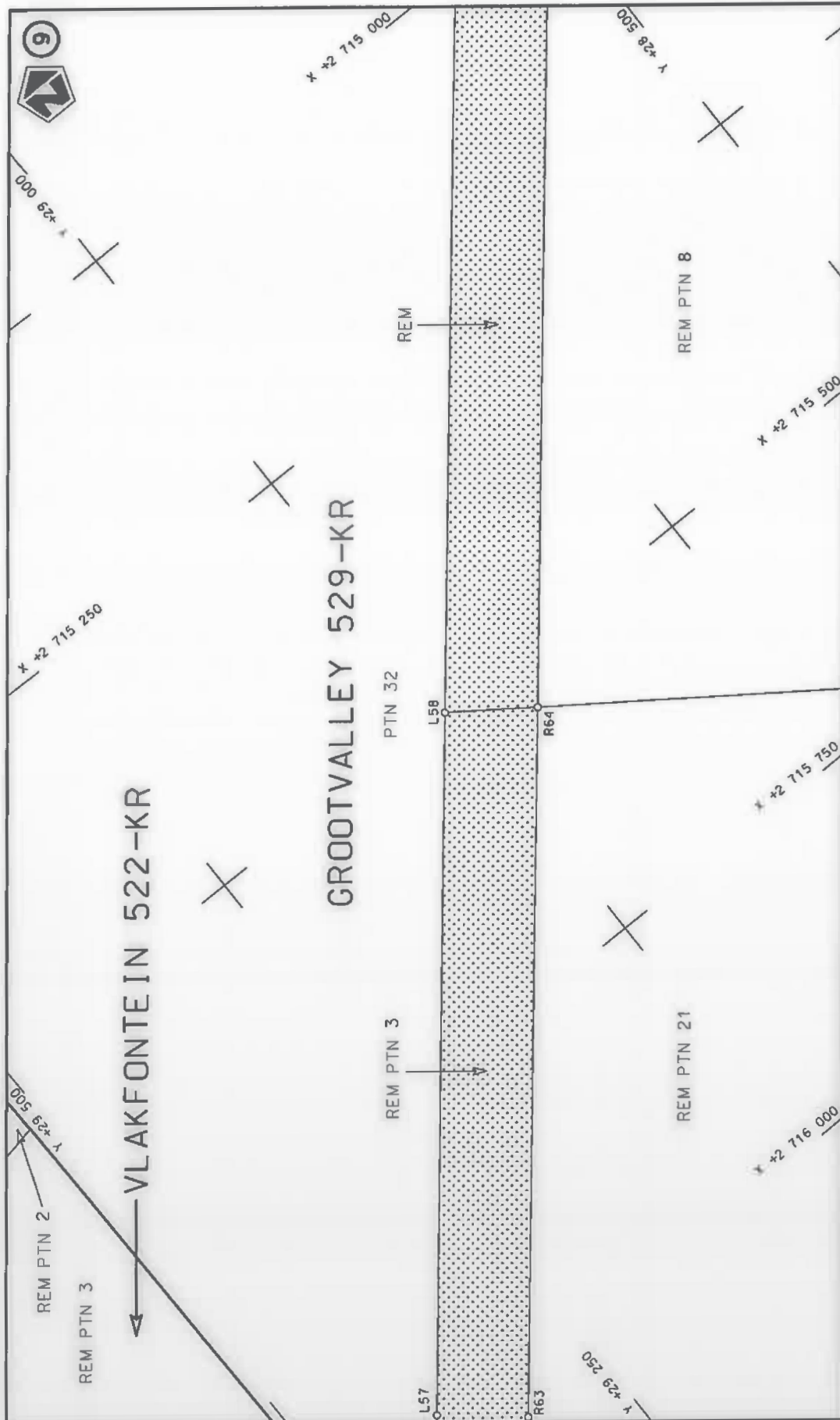
Die Suid Afrikaanse Nasionale Padagentskap MSB Bpk The South African National Roads Agency SOC Ltd	Die figuur getoon The figure shown	steldie padreserwe voor van 'n gedeelte represents the road reserve of a portion van Nasionale Roete N1 of National Route N1 Section	Vel Sheet 2 of 32 Plan P1059/18
---	---------------------------------------	---	---------------------------------------



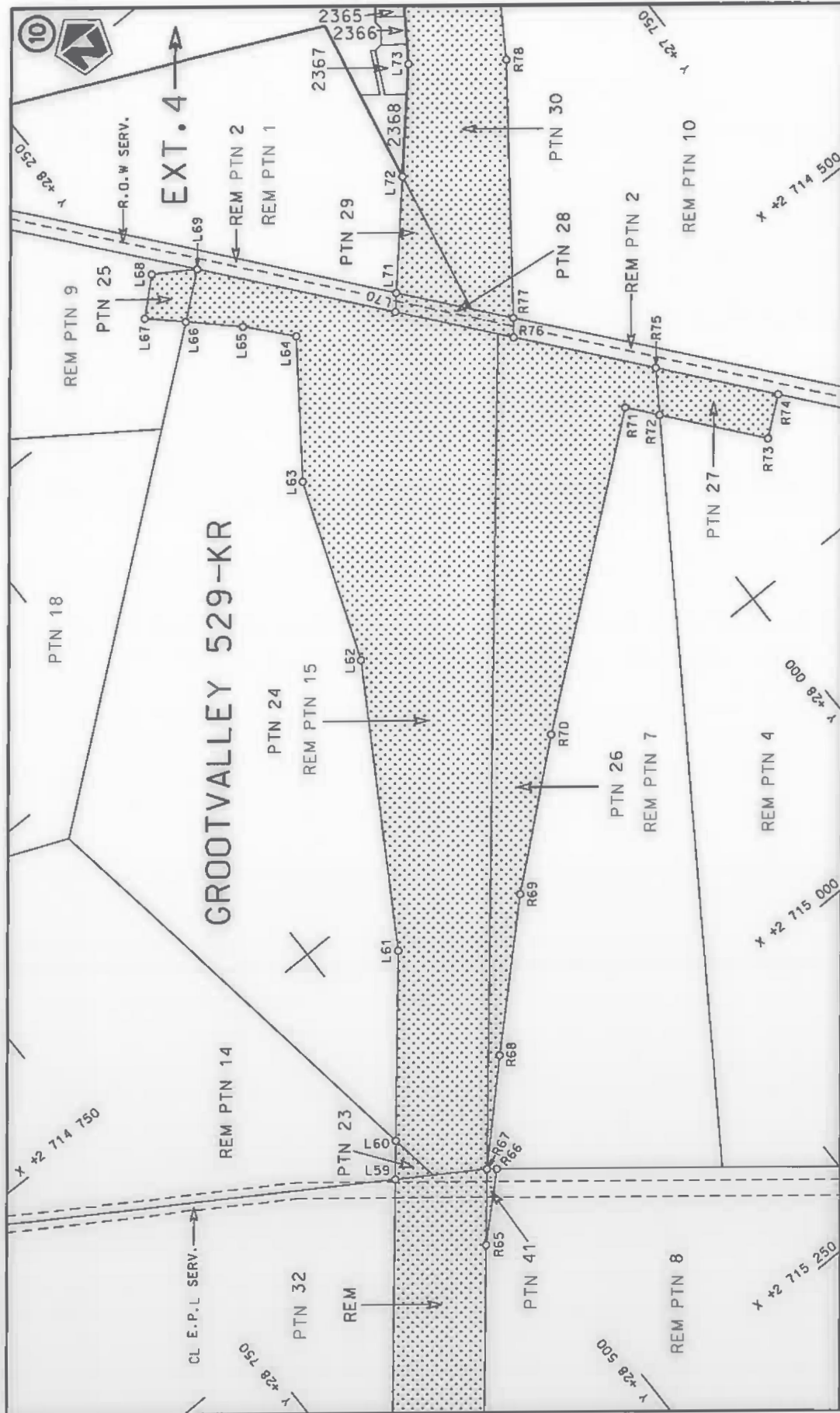
<p>Die Suid Afrikaanse Nasionale Padogenitskop MSB Bpk The South African National Roads Agency SOC Ltd</p>	<p>Die figuur getoon The figure shown</p> 	<p>stelt die padreserwe voor van 'n gedeelte represents the road reserve of a portion van Nasionale Roete N1 of National Route</p>	<p>Vel Sheet 3 of 32 Plan P1059/18</p>
--	---	--	--



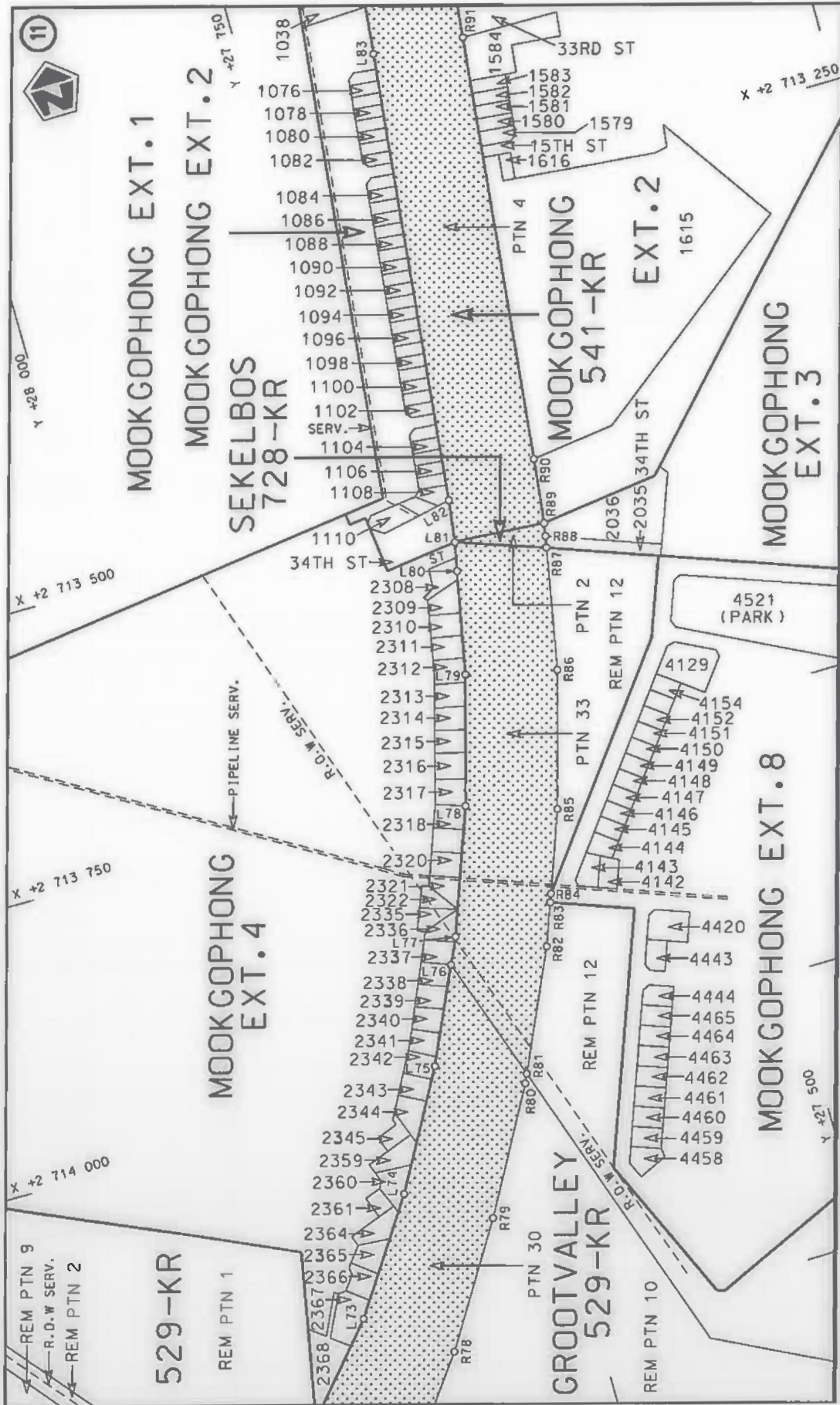
Die Suid-Afrikaanse Nasionale Padagentskap MSB Bpk The South African National Roads Agency SOC Ltd	Die figuur getoon The figure shown		steidie padreserwe voor van 'n gedeelte represents the road reserve of a portion van Nasionale Roete N1 of National Route Section	
			25	P1059/18
		Vel Sheet 4 of 32		



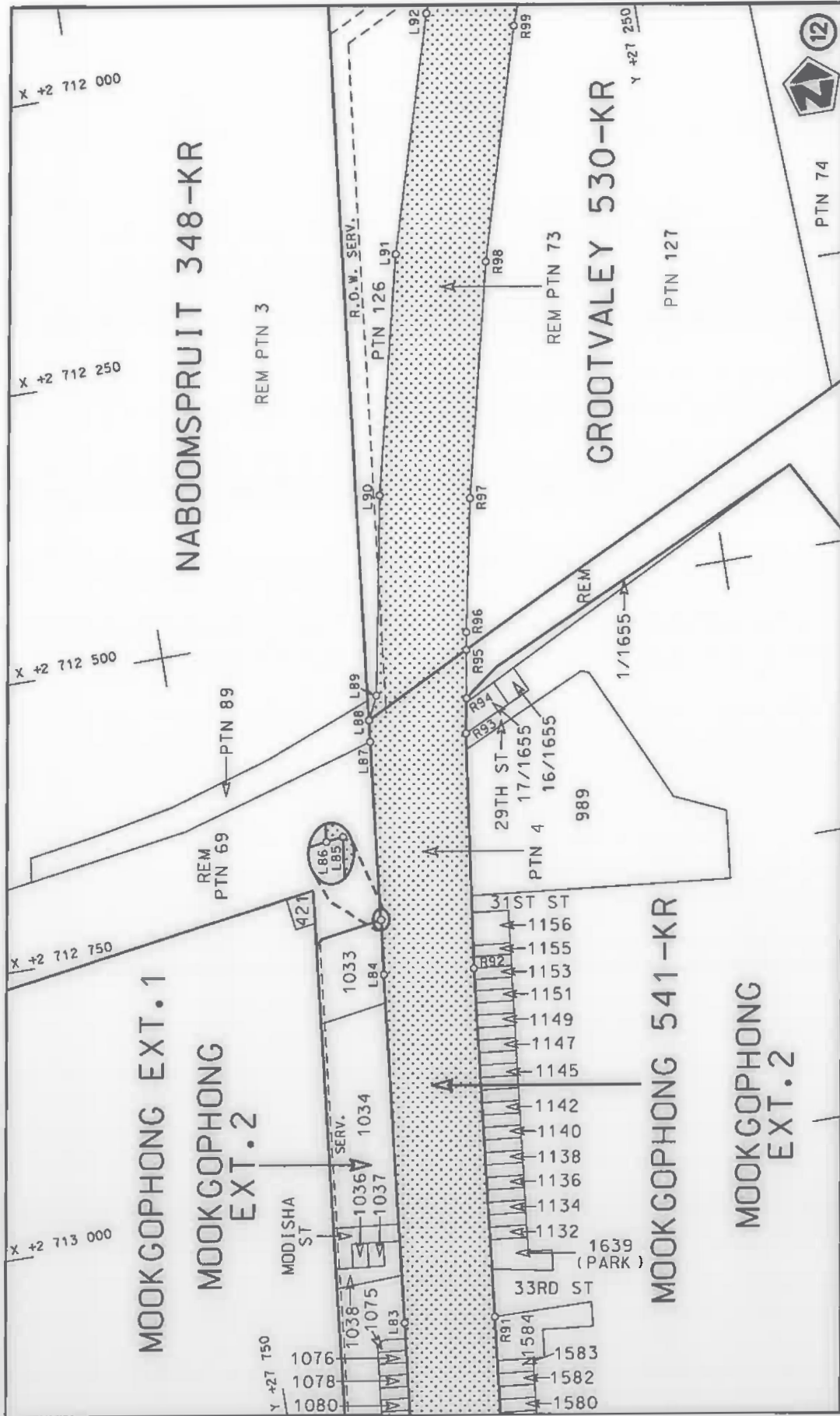
Die Suid Afrikaanse Nasionale Podagentskop MSB Bpk The South African National Roads Agency SOC Ltd	Die figuur getoon The figure shown	steldie padreserwe voor van 'n gedeelte represents the road reserve of a portion van Nasionale Roete N1 of National Route Section	25	Vel Sheet 5 of 32 Plan P1059/18
---	---------------------------------------	--	----	------------------------------------




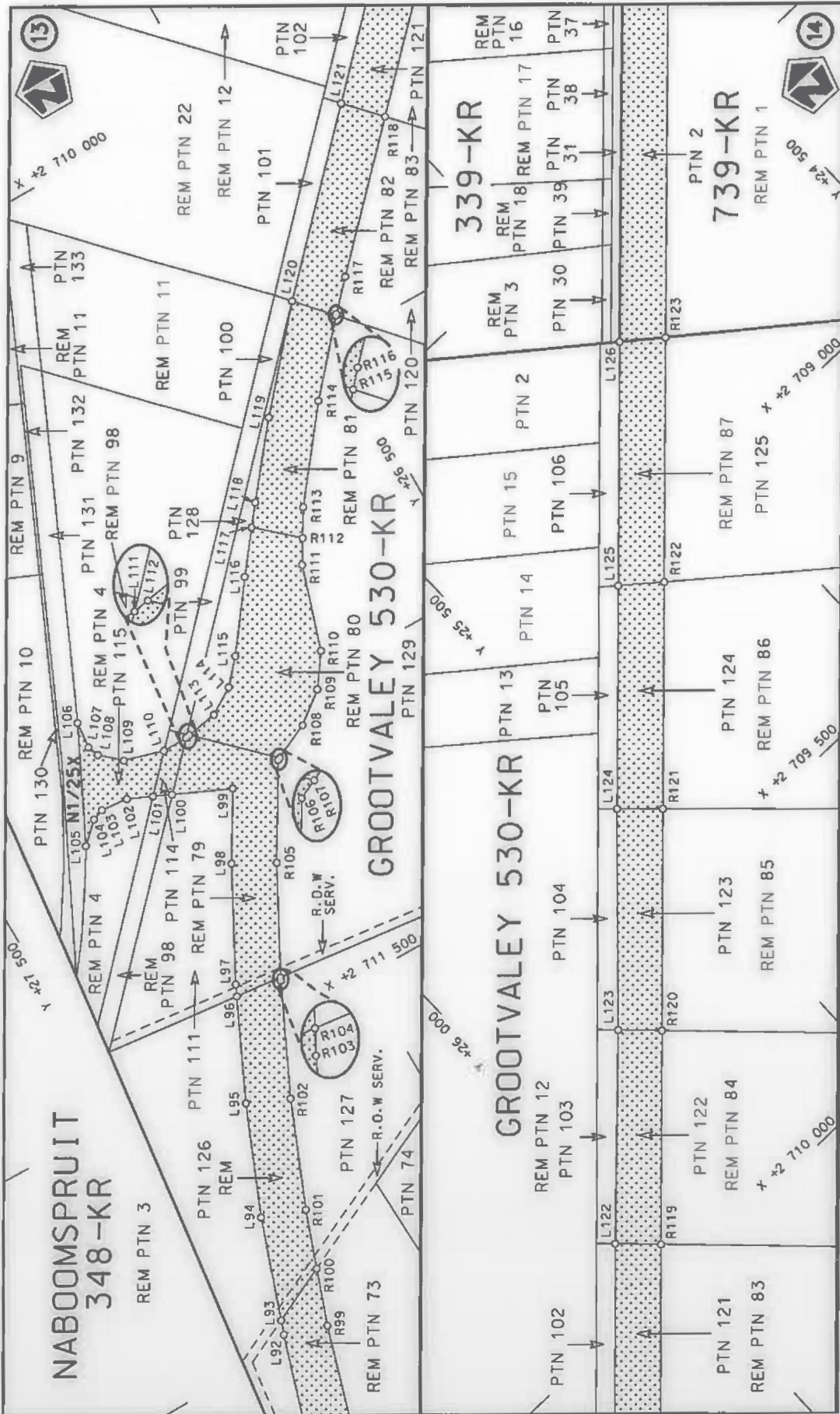
Die Suid Afrikaanse Nasionale Padagentskap MSB Bpk The South African National Roads Agency SOC Ltd	Die figuur getoon The figure shown	steldie padreserwe voor van 'n gedeelte represents the road reserve of a portion van Nasionale Roete N1 Sektie of National Route Section	Vel Sheet 6 of 32
		25	Plan P1059/18




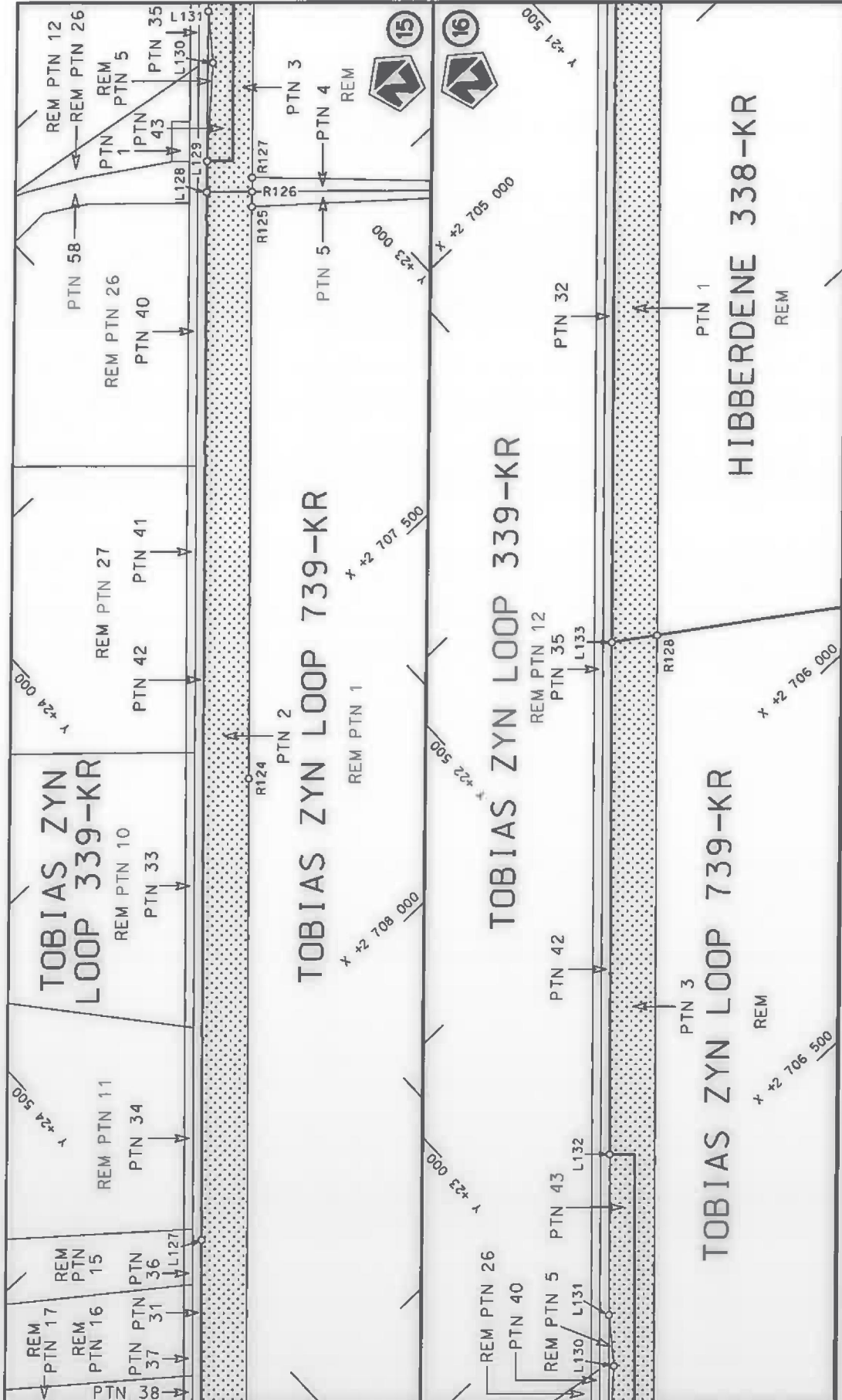
Die Suid Afrikaanse Nasionale Padagentskap MSB Bpk The South African National Roads Agency SOC Ltd	Die figuur getoon The figure shown		steldie padreserwe voor van 'n gedeelte represents the road reserve of a portion van Nasionale Roete N1 of National Route	25 Seksie Section
			Plan P1059/18	
Vel Sheet 7 of 32	11		X +2 713 500 Y +21 750	X +2 713 250 Y +21 500



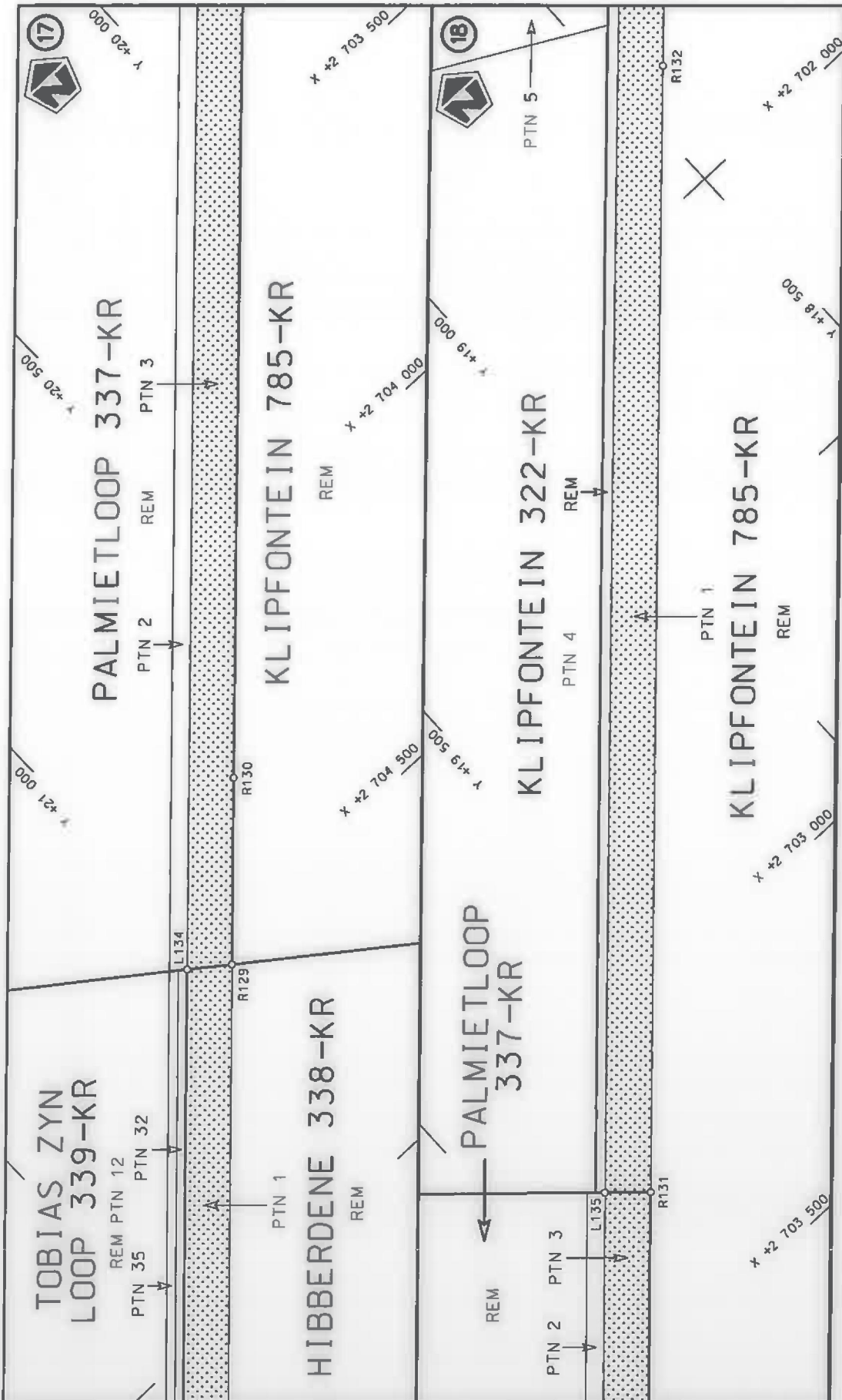
Die Suid Afrikaanse Nasionale Padagentskap MSB Bpk The South African National Roads Agency SOC Ltd	Die figuur getoon The figure shown		stelde padreserwe voor van 'n gedeelte represents the road reserve of a portion van Nasionale Roete N1 of National Route of National Route	Vel Sheet	van 8	of 32
				Plan	P1059/18	Seksie 25



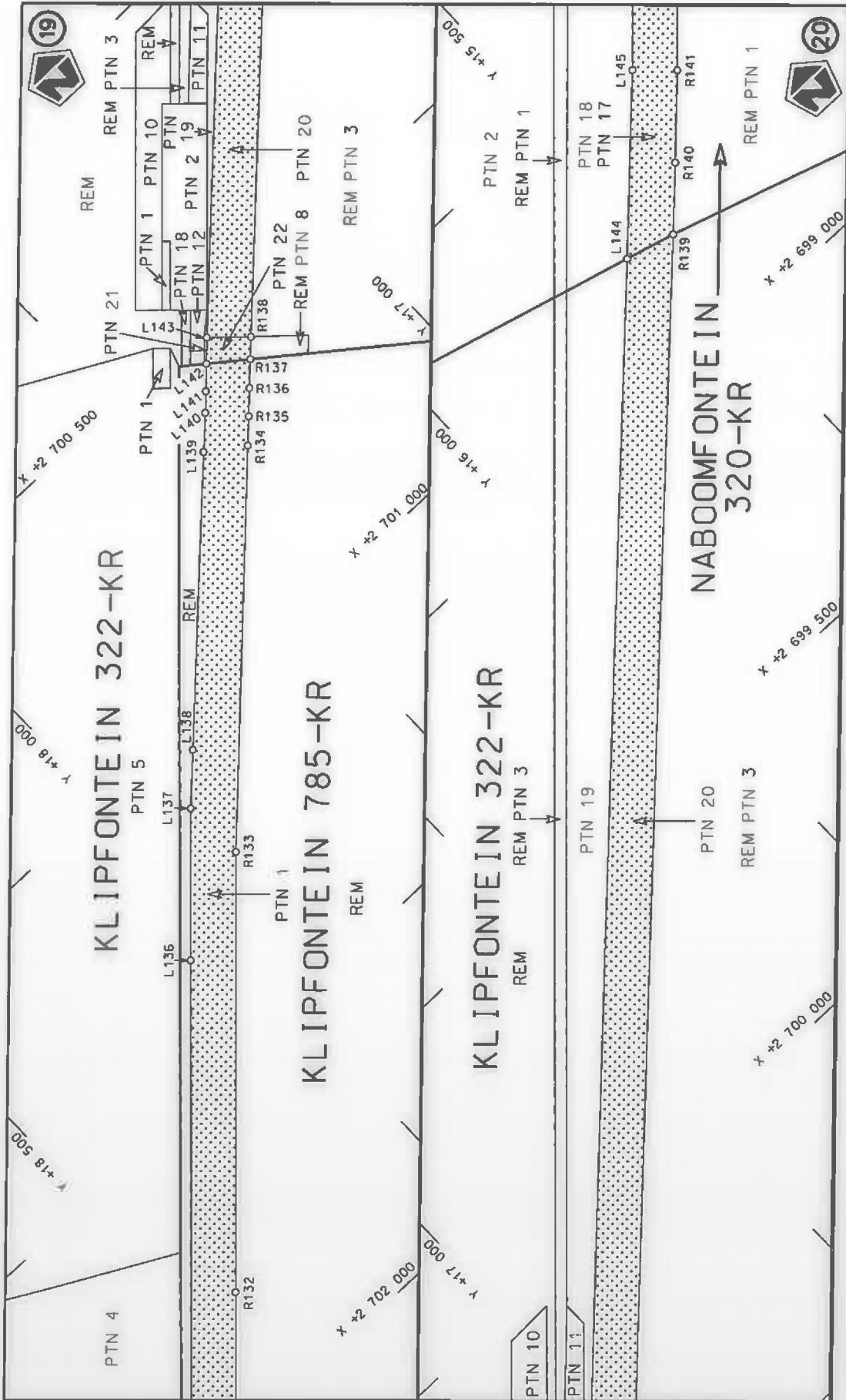
Die Suid Afrikaanse Nasionale Padagentskap MSB Bpk The South African National Roads Agency SOC Ltd	Die figuur getoon The figure shown		steldie podreserwe voor van 'n gedeelte represents the road reserve of a portion van Nasionale Roete N1 of National Route Section 25	
			Vel Sheet	van of
			9	32
			Plan	P1059/18



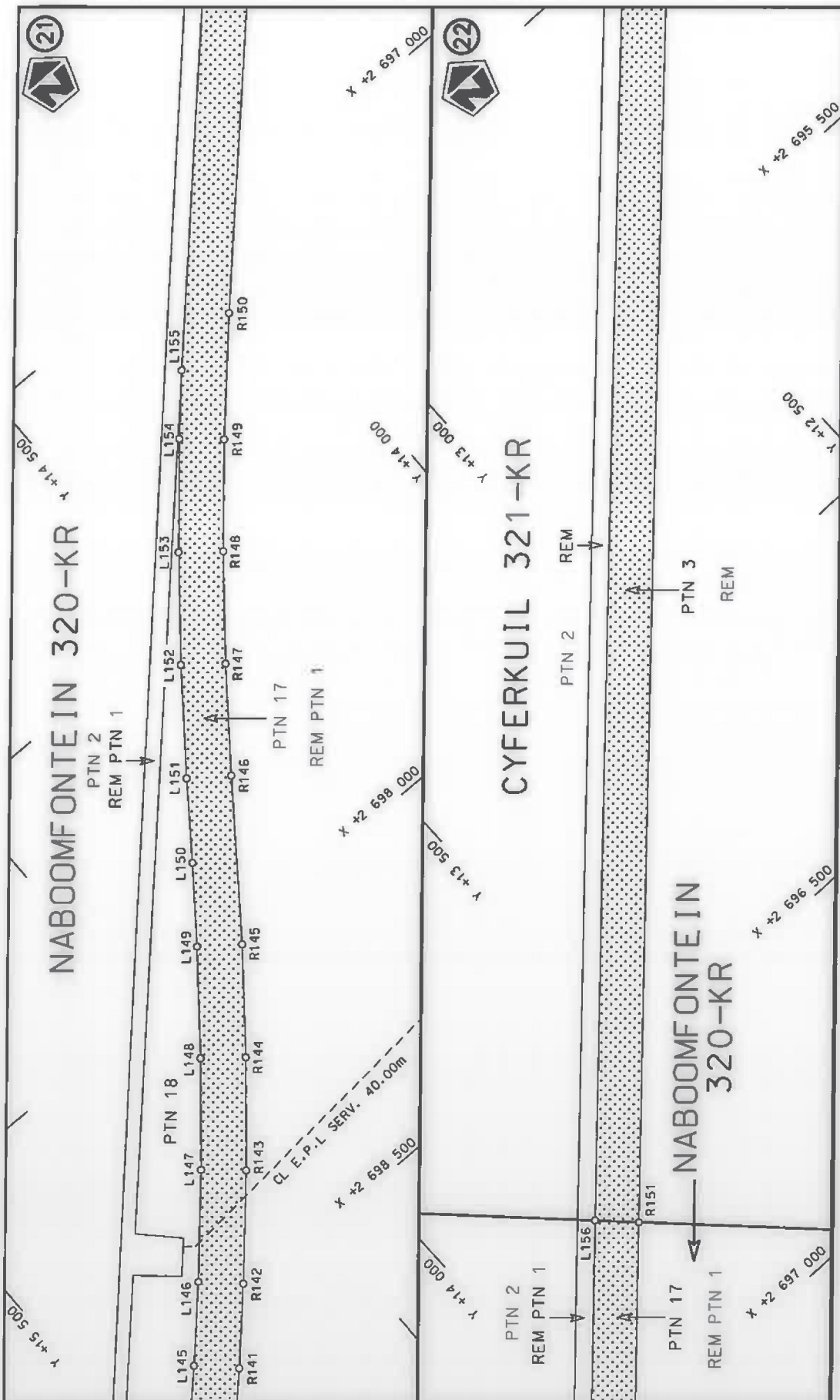
Die Suid Afrikaanse Nasionale Padagentskap MSB Bpk The South African National Roads Agency SOC Ltd	Die figuur getoon The figure shown		steldie podreserwe voor van 'n gedeelte represents the road reserve of a portion van Nasionale Roete N1 of National Route Section	
			25	Vel Sheet 10 of 32 Plan P1059/18




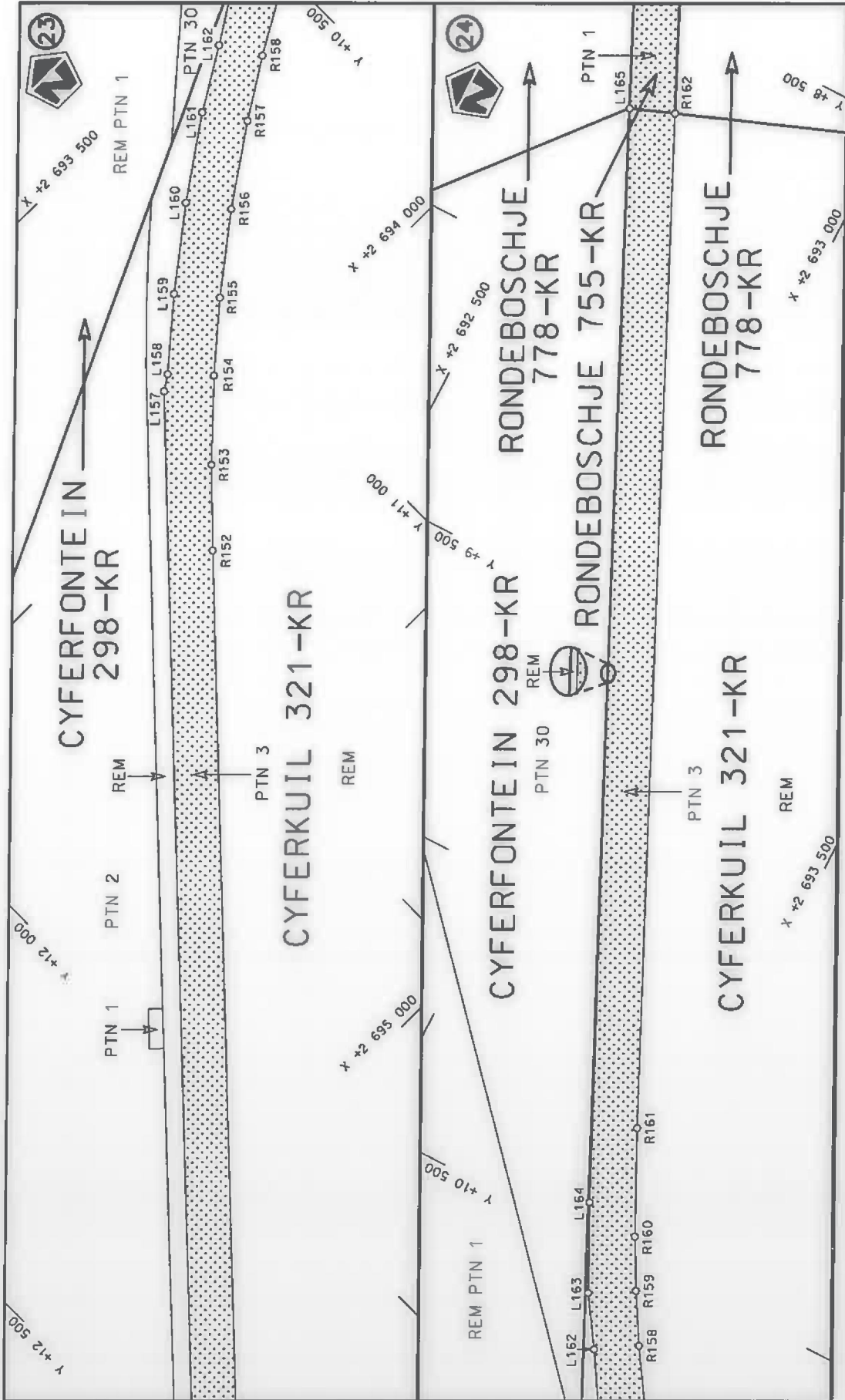
Die Suid-Afrikaanse Nasionale Padagentskap MSB Bpk The South African National Roads Agency SOC Ltd	Die figuur getoon The figure shown		steldie podreserwe voor van 'n gedeelte represents the road reserve of a portion van Nasionale Roete N1 of National Route	25
			Val Sheet 11 of 32 Plan P1059/18	



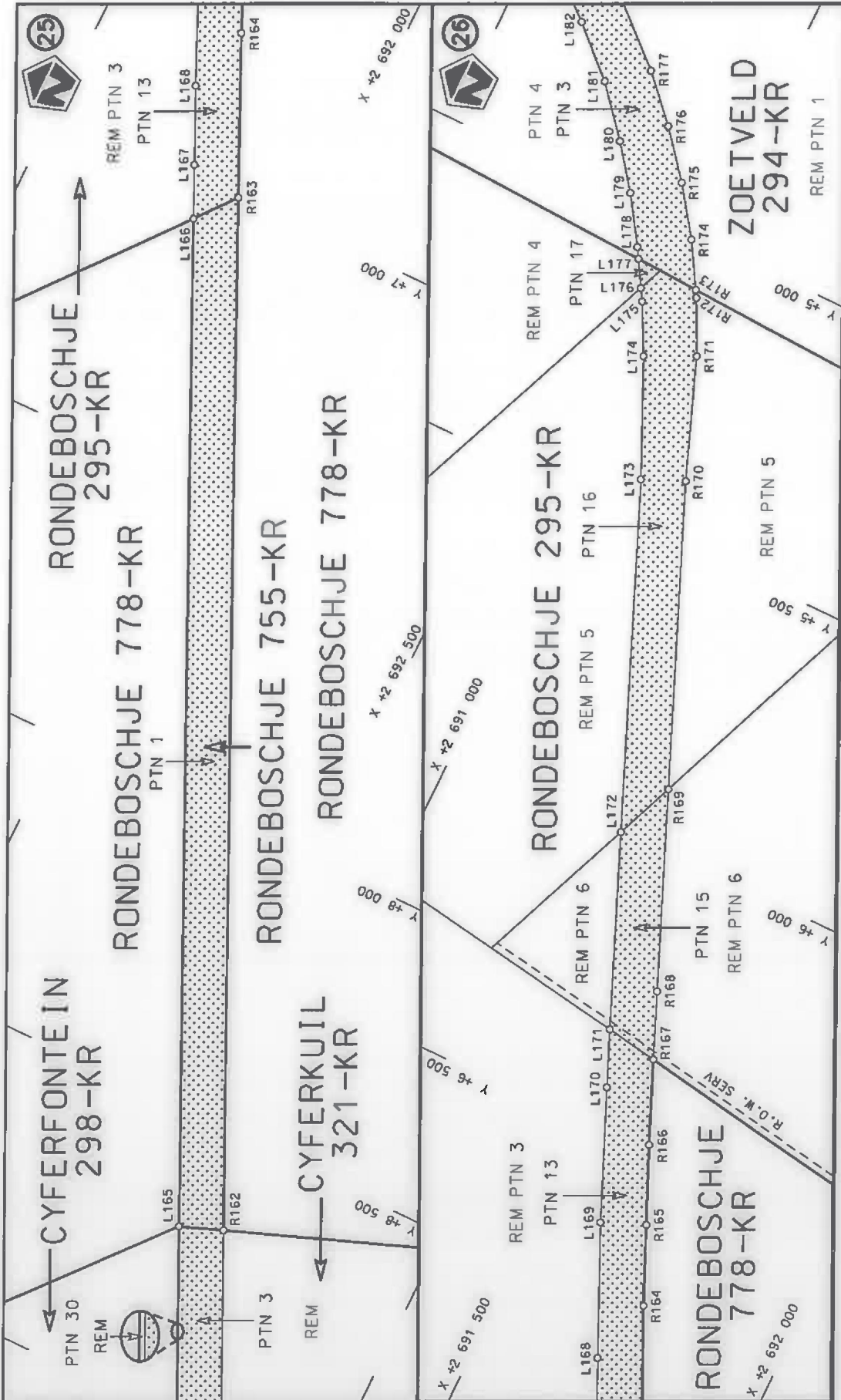
Die Suid Afrikaanse Nasionale Padagentskap MSB Bpk The South African National Roads Agency SOC Ltd	Die figuur getoon The figure shown	 stelde padreserwe voor van 'n gedeelte represents the road reserve of a portion van Nasionale Roete N1 of National Route	Val Sheet 12 of 32 Plan P1059/18
25			Section



<p>Die Suid Afrikaanse Nasionale Padagentskap MSB Bpk The South African National Roads Agency SOC Ltd</p>	<p>Die figuur getoon The figure shown</p> 	<p>steldie podreserwe voor van 'n gedeelte represents the road reserve of a portion van Nasionale Roete N1 of National Route</p> <p>Seksie Section</p> <p>25</p>	<p>Vel Sheet</p> <p>13 van of</p> <p>32</p> <p>Plan P1059/18</p>
---	---	--	--



<p>Die Suid Afrikaanse Nasionale Padagentskap MSB Bpk The South African National Roads Agency SOC Ltd</p>	<p>Die figuur getoon The figure shown</p> 	<p>stelt die padreserwe voor van 'n gedeelte represents the road reserve of a portion van Nasionale Roete N1 of National Route</p> <p>Seksie 25 Section</p>	<p>Vel Sheet 14 of 32 Plan P1059/18</p>
---	---	---	---



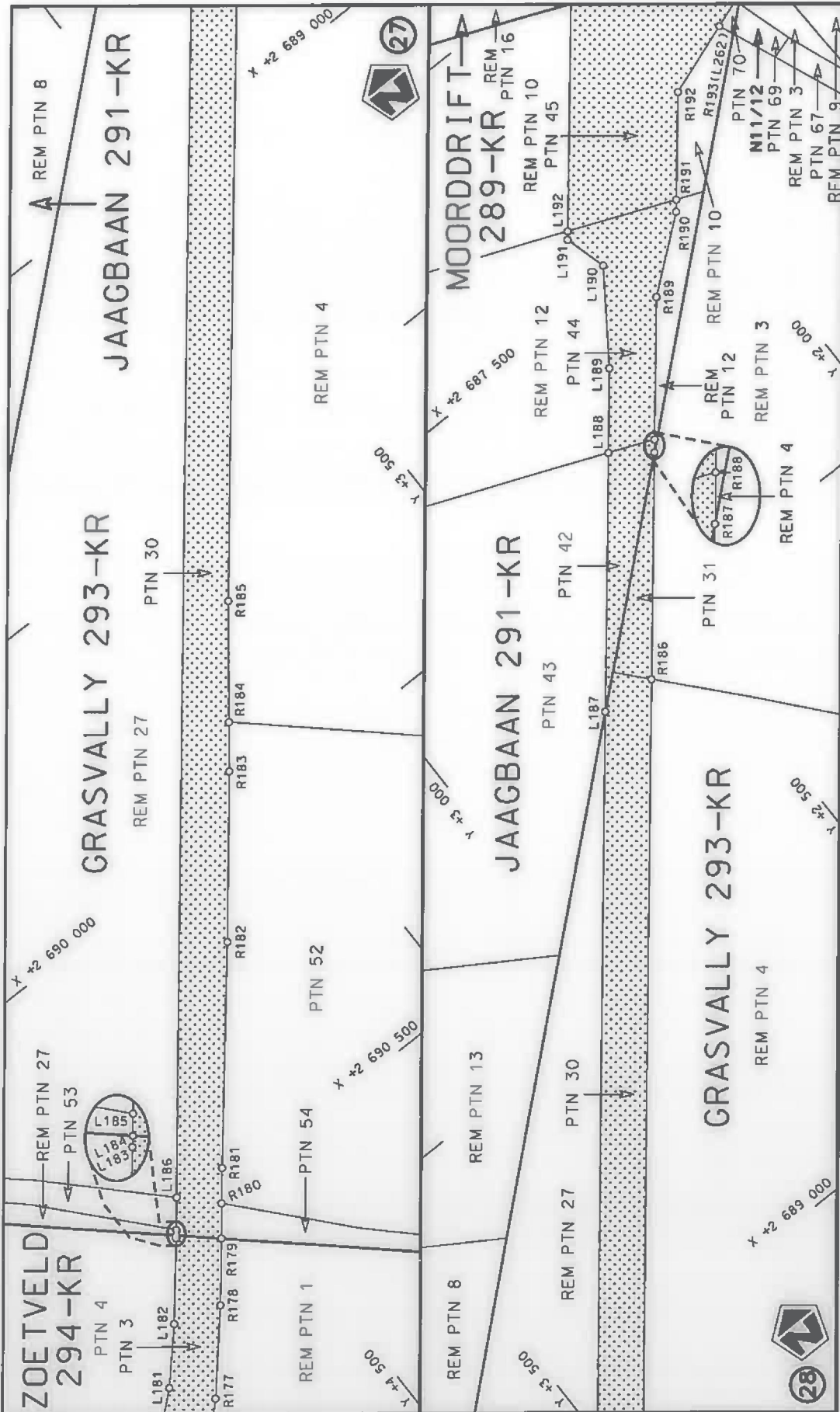
Die Suid Afrikaanse Nasionale Padagentskap MSB Bpk
The South African National Roads Agency SOC Ltd

Die figuur getoon
The figure shown

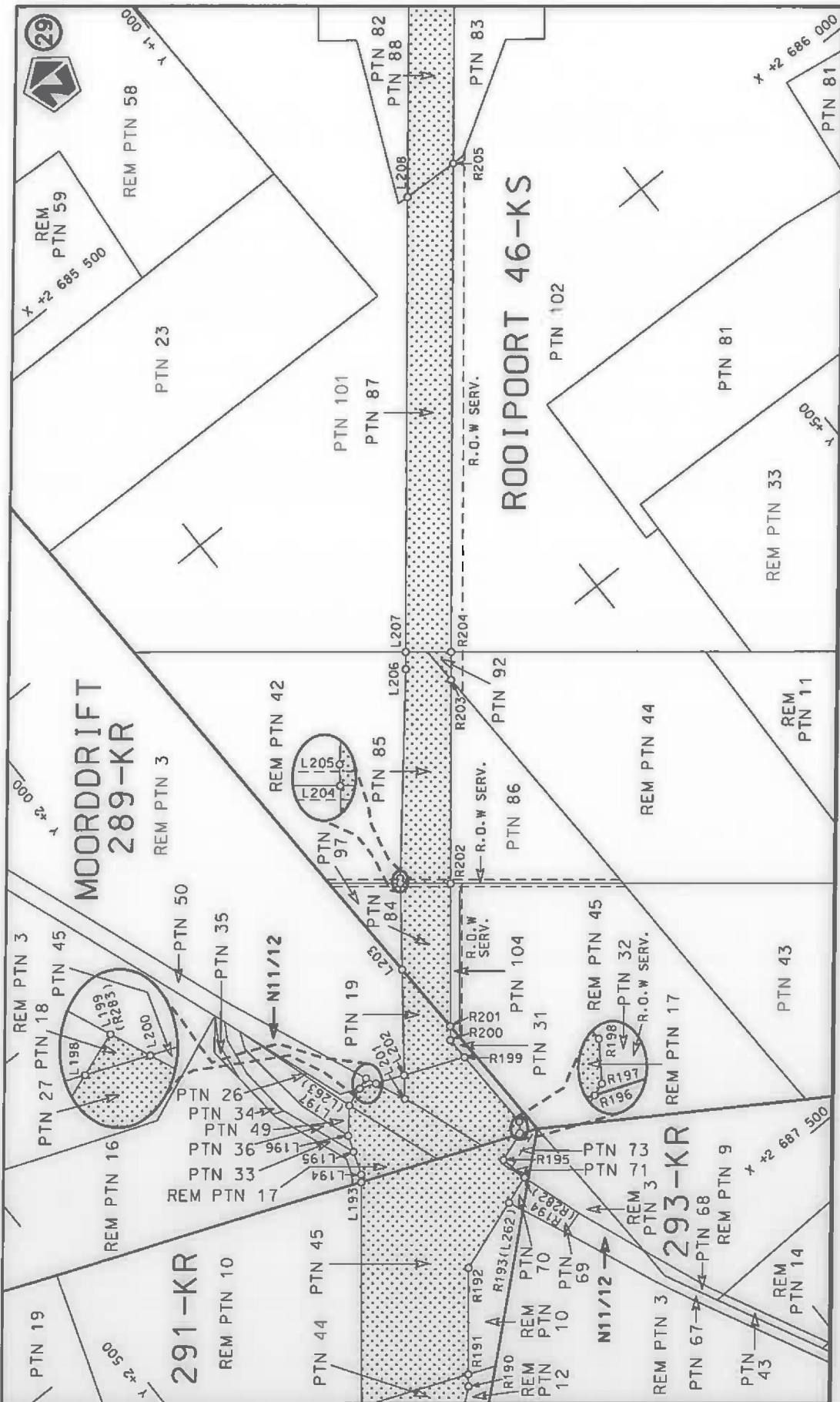


stelt die padreserwe voor van 'n gedeelte
represents the road reserve of a portion
van Nasionale Roete N1
of National Route Section 25

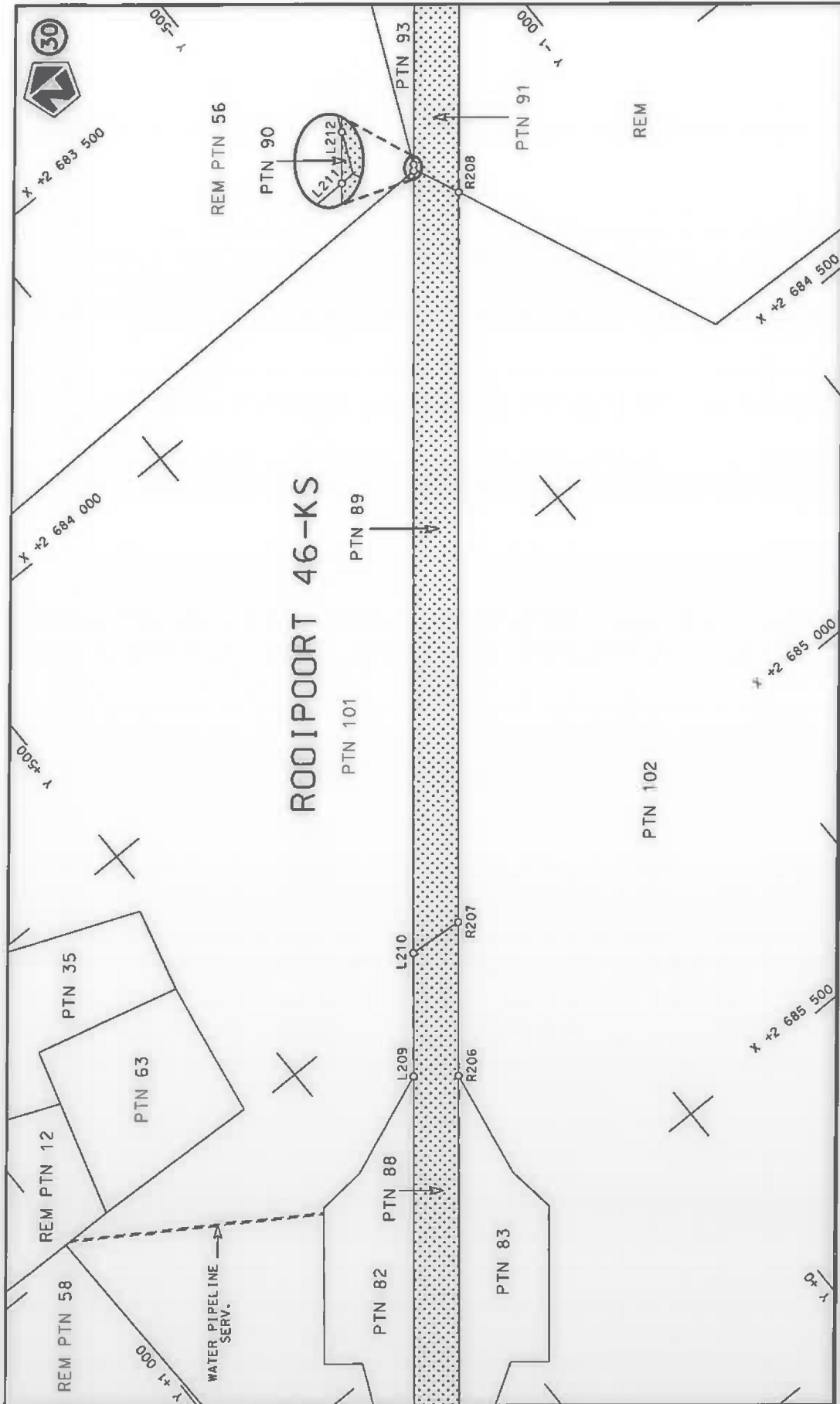
Vel Sheet 15 of 32
Plan P1059/18



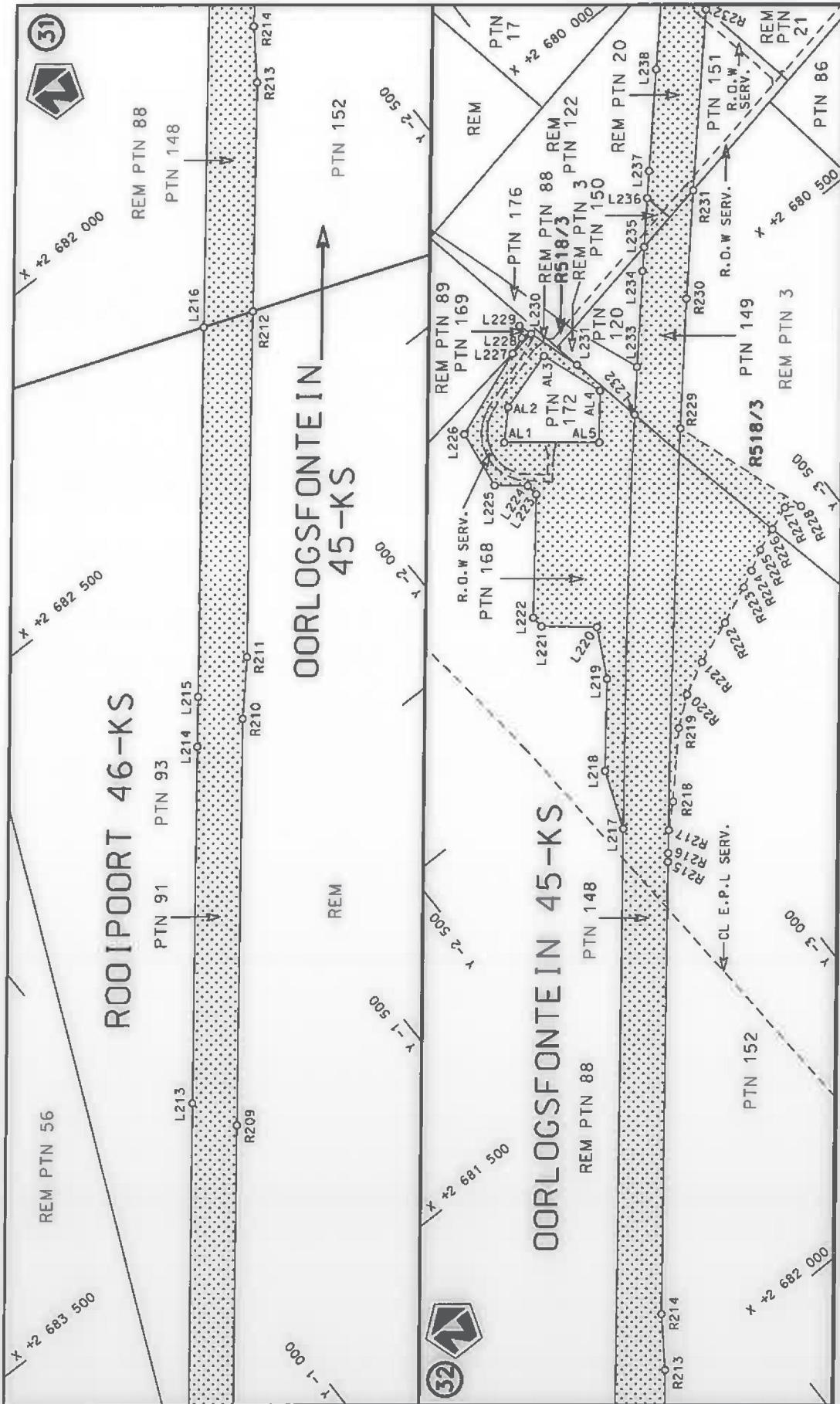
<p>Die Suid Afrikaanse Nasionale Padagentskap MSB Bpk The South African National Roads Agency SOC Ltd</p>	<p>Die figuur getoon The figure shown</p> 	<p>steldie padreserwe voor van 'n gedeelte represents the road reserve of a portion van Nasionale Roete N1 of National Route</p>	<p>Vel Sheet 16 of 32 Plan P1059/18</p>
---	---	--	---




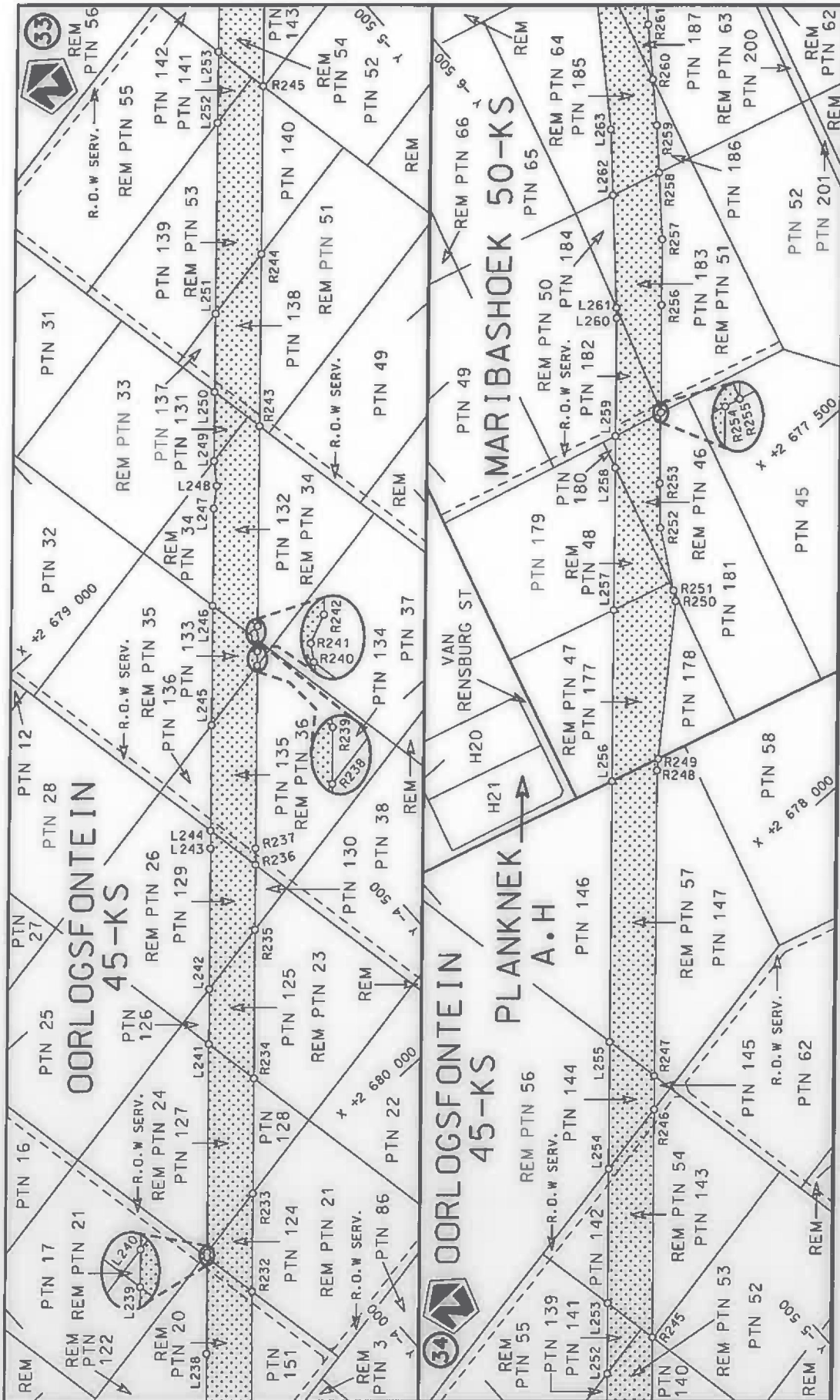
<p>Die Suid Afrikaanse Nasionale Padagentskap MSB Bpk The South African National Roads Agency SOC Ltd</p>	<p>Die figuur getoon The figure shown</p>	<p>steldie podreserwe voor van 'n gedeelte represents the road reserve of a portion van Nasionale Roete N1 of National Route N1</p>	<p>Section 25 Seksie 25 Plan P1059/18 Sheet 17 of 32 Vel 17 van 32</p>
---	---	---	--



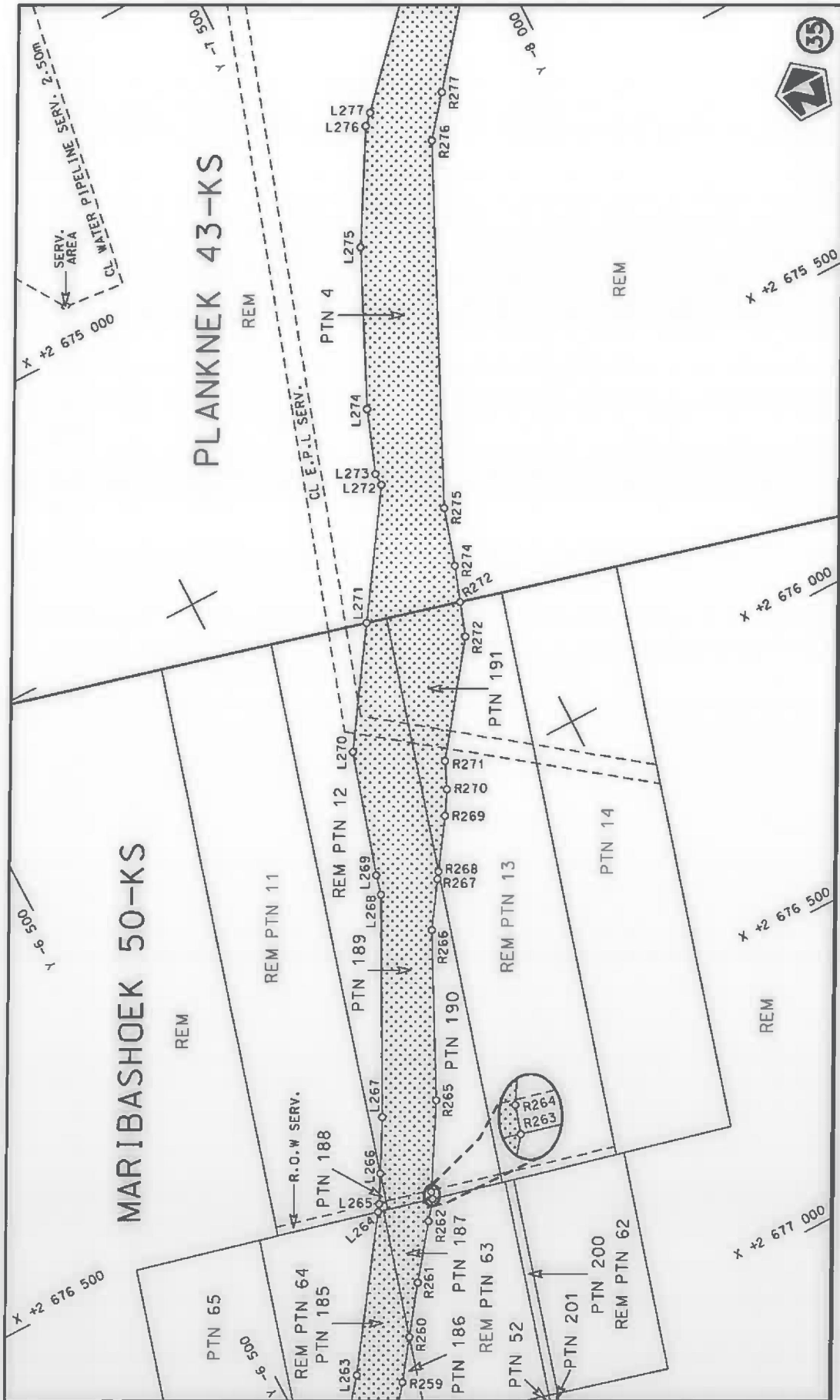
Die Suid Afrikaanse Nasionale Padagentskap MSB Bpk The South African National Roads Agency SOC Ltd	Die figuur getoon The figure shown	steldie padreserwe voor van 'n gedeelte represents the road reserve of a portion van Nasionale Roete N1 of National Route	Vel 18 van 32 Sheet 18 of 32
		Sektie 25 Section	Plan P1059/18



Die Suid Afrikaanse Nasionale Padagentskap MSB Bpk The South African National Roads Agency SOC Ltd	Die figuur getoon The figure shown	 steldie padreserwe voor van 'n gedeelte represents the road reserve of a portion van Nasionale Roete N1 of National Route	Vel Sheet 19 of 32
			Plan P1059/18



Die Suid Afrikaanse Nasionale Padagentskap MSB Bpk The South African National Roads Agency SOC Ltd	Die figuur getoon The figure shown	steldie padreserwe voor van 'n gedeelte represents the road reserve of a portion van Nasionale Roete of National Route	Plan P1059/18
	Die figuur getoon The figure shown	steldie padreserwe voor van 'n gedeelte represents the road reserve of a portion van Nasionale Roete of National Route	Section 25
			Vel Sheet 20 of 32



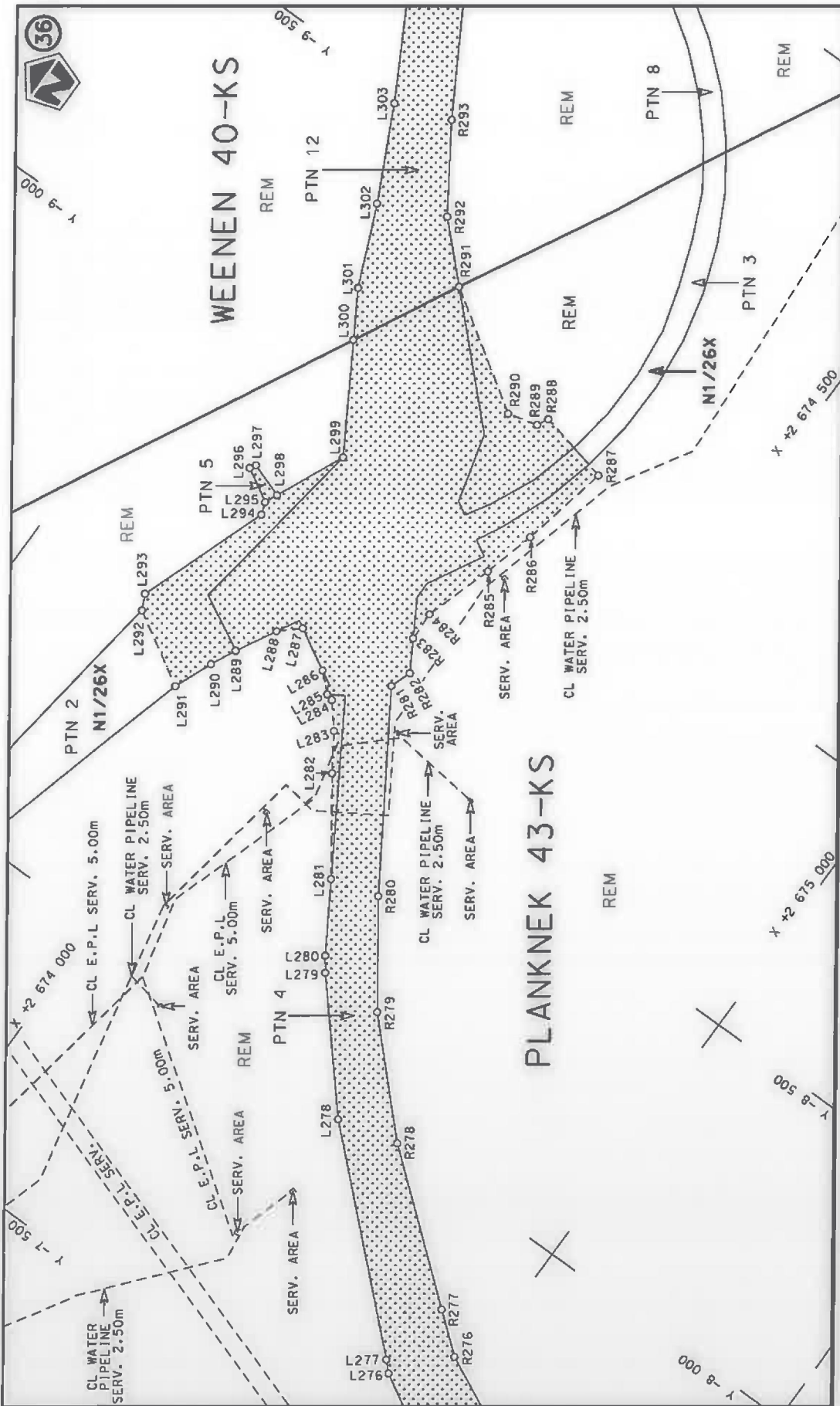
Vel Sheet 21 of 32
Plan P1059/18

steldie padreserwe voor van 'n gedeelte
represents the road reserve of a portion
van Nasionale Roete N1 Sektie
of National Route N1 Section

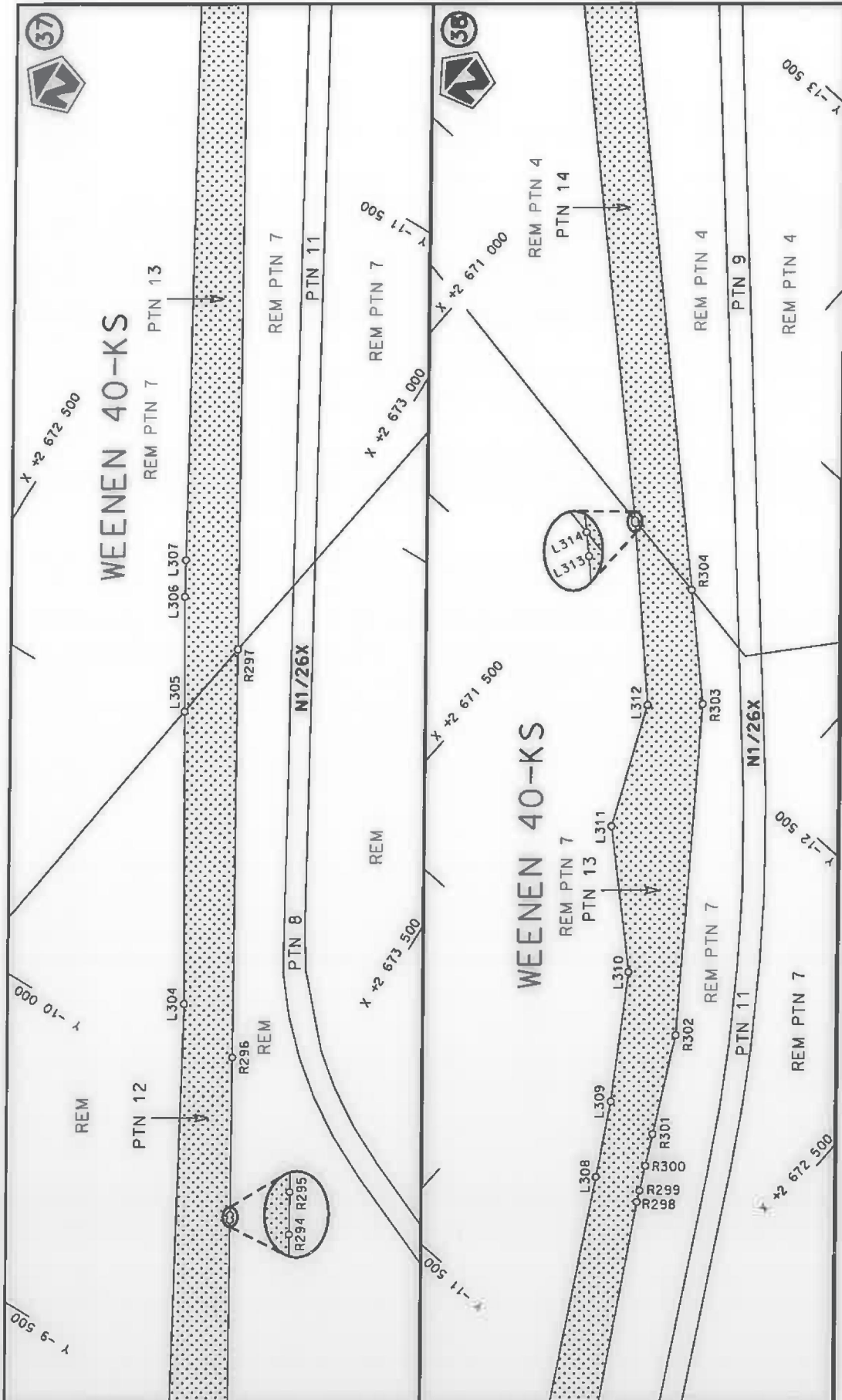


Die figuur getoon
The figure shown

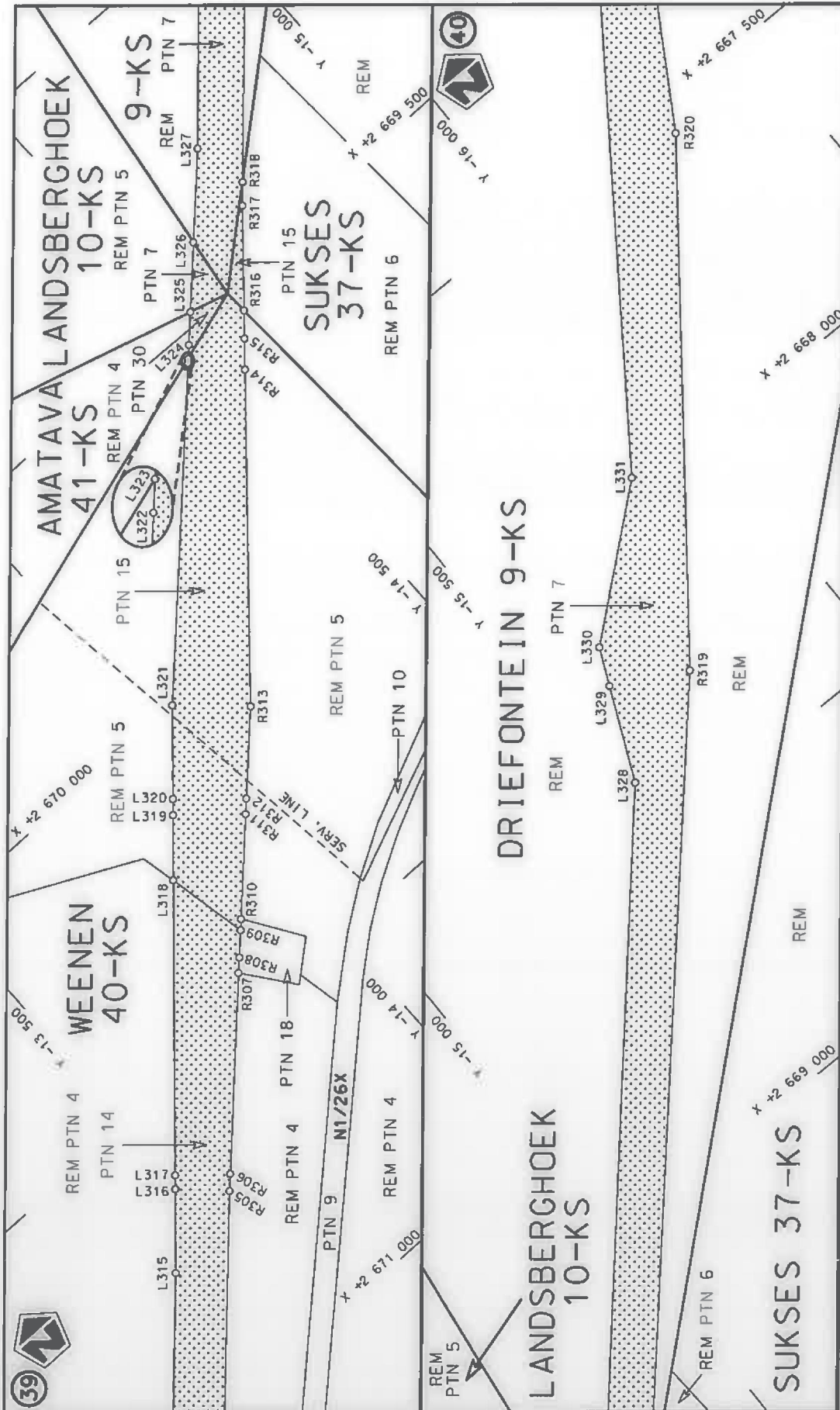
Die Suid Afrikaanse Nasionale Padagentskap MSB Bpk
The South African National Roads Agency SOC Ltd



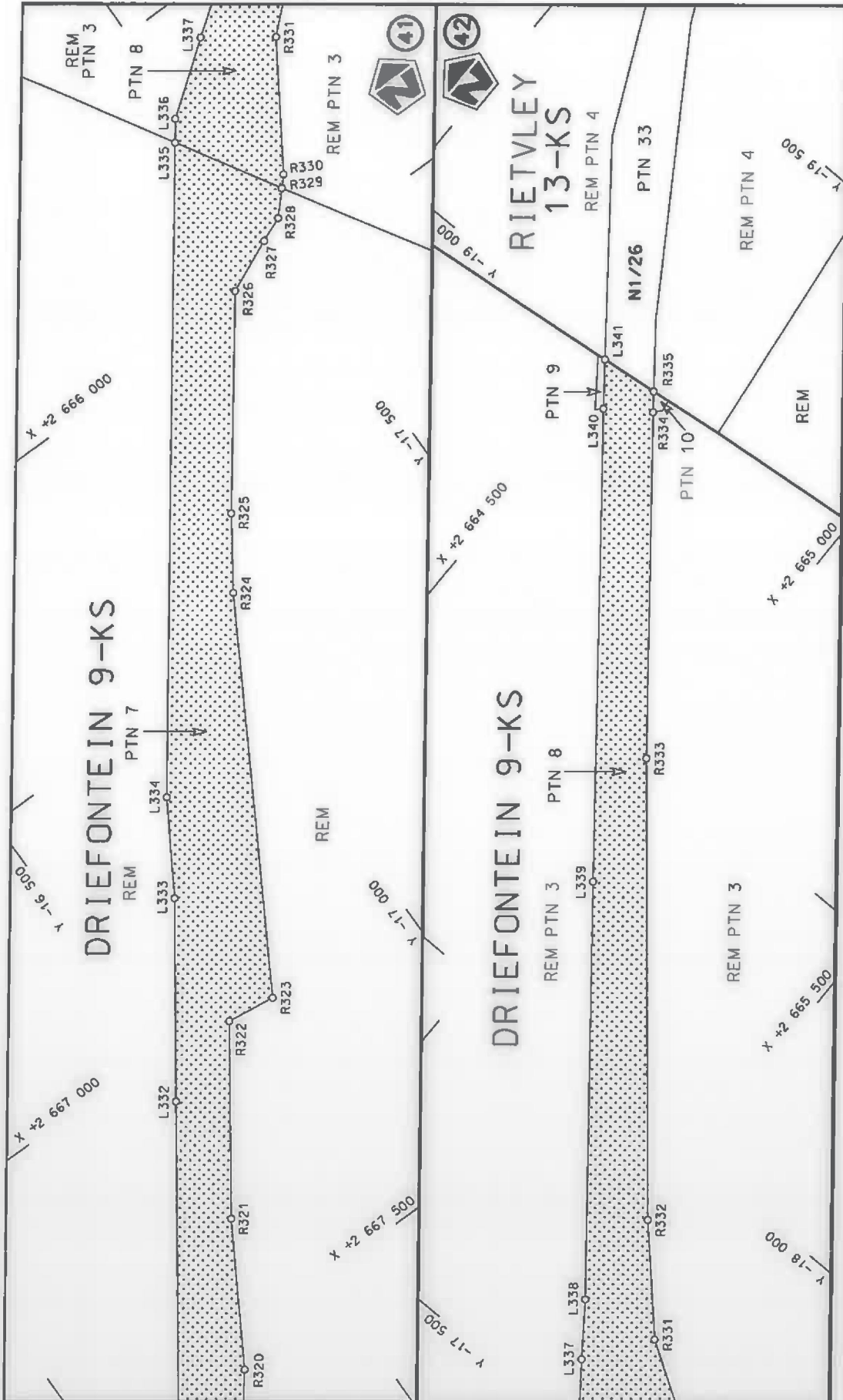
Die Suid Afrikaanse Nasionale Podagentskap MSB Bpk The South African National Roads Agency SOC Ltd	Die figuur getoon The figure shown	steldie podreserwa voor van 'n gedeelte represents the road reserve of a portion van Nasionale Roete N1 of National Route N1	Vel Sheet 22 of 32 Plon P1059/18
---	---------------------------------------	---	-------------------------------------



<p>Die Suid-Afrikaanse Nasionale Padagentskap MSB Bpk The South African National Roads Agency SOC Ltd</p>	<p>Die figuur getoon The figure shown</p> 	<p>steldie padreserwe voor van 'n gedeelte represents the road reserve of a portion van Nasionale Roete N1 of National Route</p>	<p>Vel Sheet 23 of 32</p> <p>Plan P1059/18</p>
		<p>25</p>	<p>Seksie Section</p>



<p>Die Suid Afrikaanse Nasionale Podagentskap MSB Bpk The South African National Roads Agency SOC Ltd</p>	<p>Die figuur getoon The figure shown</p> 	<p>stede die podreserwe voor van 'n gedeelte represents the road reserve of a portion van Nasionale Roete N1 Sektie of National Route N1 Section</p>	<p>Vel Sheet 24 of 32</p> <p>Plan P1059/18</p>
---	---	--	--



Die Suid Afrikaanse Nasionale Padoggenskap MSB Bpk The South African National Roads Agency SDC Ltd	Die figuur getoon The figure shown 	steldie podreserwe voor van 'n gedeelte represents the road reserve of a portion van Nasionale Roete N1 of National Route N1 Sektie Section	Vel Sheet 25 of 32 Plan P1059/18
---	---	--	--

PADRESERWE KOÖRDINATE / ROAD RESERVE CO-ORDINATES					
LINKERKANT/LEFT HAND SIDE			REGTERKANT/RIGHT HAND SIDE		
	Y	X	WG 29°	Y	X
L1	41 908.60	2 727 615.58		R1	41 872.43 2 727 746.72
L2	41 505.57	2 727 198.02		R2	41 866.27 2 727 740.21
L3	41 429.20	2 727 119.10		R3	41 152.41 2 726 998.20
L4	41 228.29	2 726 910.54		R4	41 016.41 2 726 843.23
L5	41 162.98	2 726 841.09		R5	40 887.47 2 726 683.46
L6	41 116.00	2 726 784.84		R6	40 695.76 2 726 444.65
L7	41 056.21	2 726 705.71		R7	40 609.77 2 726 338.70
L8	41 010.08	2 726 635.80		R8	40 517.40 2 726 237.21
L9	40 939.10	2 726 619.91		R9	40 424.22 2 726 169.96
L10	40 760.00	2 726 393.38		R10	40 350.03 2 726 080.68
L11	40 725.13	2 726 348.58		R11	39 772.84 2 725 587.80
L12	40 671.62	2 726 286.62		R12	39 561.08 2 725 415.81
L13	40 574.72	2 726 180.78		R13	39 425.89 2 725 295.26
L14	40 474.28	2 726 081.81		R14	39 254.48 2 725 145.26
L15	40 368.22	2 725 989.89		R15	39 110.47 2 725 022.36
L16	39 821.47	2 725 525.15		R16	39 052.54 2 724 998.67
L17	39 735.94	2 725 444.27		R17	39 009.88 2 724 936.37
L18	39 453.12	2 725 203.38		R18	38 940.91 2 724 877.23
L19	39 446.52	2 725 197.55		R19	38 899.82 2 724 855.05
L20	39 230.94	2 725 017.28		R20	38 860.99 2 724 808.98
L21	38 967.76	2 724 793.72		R21	38 714.74 2 724 698.85
L22	38 814.26	2 724 645.92		R22	38 488.86 2 724 501.07
L23	38 777.08	2 724 625.62		R23	38 319.39 2 724 360.27
L24	38 669.87	2 724 541.15		R24	38 291.40 2 724 332.53
L25	38 499.48	2 724 400.47		R25	38 264.83 2 724 300.54
L26	38 397.52	2 724 300.57		R26	38 135.49 2 724 189.77
L27	38 319.93	2 724 223.41		R27	37 854.43 2 723 950.52
L28	38 258.49	2 724 186.29		R28	37 793.15 2 723 898.93
L29	38 229.91	2 724 162.72		R29	37 743.32 2 723 865.00
L30	38 091.87	2 724 047.56		R30	37 645.74 2 723 772.49
L31	37 451.68	2 723 501.72		R31	37 543.25 2 723 681.61
L32	37 416.98	2 723 472.04		R32	37 401.39 2 723 563.71
L33	34 445.69	2 720 937.00		R33	37 366.94 2 723 534.11
L34	34 383.17	2 720 881.83		R34	37 364.79 2 723 532.65
L35	34 342.11	2 720 846.37		R35	34 378.15 2 720 982.78
L36	34 187.12	2 720 701.85		R36	34 300.05 2 720 915.98
L37	34 040.21	2 720 548.86		R37	34 300.88 2 720 915.64
L38	33 901.72	2 720 388.50		R38	34 208.00 2 720 834.61
L39	33 808.70	2 720 271.81		R39	34 053.92 2 720 682.82
L40	33 576.39	2 719 976.56		R40	33 908.22 2 720 522.99
L41	33 322.57	2 719 653.99		R41	33 745.81 2 720 321.35
L42	32 807.19	2 718 996.99		R42	33 041.17 2 719 425.61
L43	32 647.88	2 718 775.29		R43	32 861.94 2 719 207.17
L44	32 432.69	2 718 517.08		R44	32 783.10 2 719 118.25
L45	32 376.34	2 718 342.17		R45	32 708.40 2 719 054.93
L46	32 338.29	2 718 354.45		R46	32 592.88 2 718 977.24
L47	32 400.36	2 718 560.11		R47	32 567.59 2 718 950.11
L48	32 355.51	2 718 533.10		R48	32 542.34 2 718 922.81
L49	32 262.91	2 718 453.97		R49	32 521.30 2 718 900.06
L50	32 023.79	2 718 251.21		R50	32 514.10 2 718 886.57
L51	31 167.75	2 717 525.31		R51	32 501.58 2 718 863.09

Vel Sheet	26	Van of	32
--------------	----	-----------	----

P1059/18

PADRESERWE KOÖRDINATE / ROAD RESERVE CO-ORDINATES						
LINKERKANT/LEFT HAND SIDE				REGTERKANT/RIGHT HAND SIDE		
	Y	X	WG 29°		Y	X
L52	30 289.84	2 716	780.86	R52	32 490.64	2 718 827.35
L53	29 729.48	2 716	305.70	R53	32 483.29	2 718 802.76
L54	29 604.25	2 716	196.73	R54	32 462.71	2 718 767.59
L55	29 580.57	2 716	173.88	R55	32 452.25	2 718 732.77
L56	29 504.88	2 716	100.73	R56	32 404.85	2 718 690.62
L57	29 393.59	2 715	981.14	R57	32 108.10	2 718 426.66
L58	29 005.99	2 715	502.64	R58	31 860.96	2 718 216.78
L59	28 562.01	2 714	954.53	R59	31 169.34	2 717 630.03
L60	28 540.51	2 714	927.99	R60	30 188.94	2 716 800.27
L61	28 435.00	2 714	797.73	R61	29 550.12	2 716 259.05
L62	28 302.10	2 714	576.15	R62	29 502.74	2 716 215.90
L63	28 245.21	2 714	420.35	R63	29 332.55	2 716 032.61
L64	28 170.66	2 714	316.18	R64	28 940.00	2 715 549.65
L65	28 202.16	2 714	280.04	R65	28 535.75	2 715 049.78
L66	28 239.19	2 714	244.89	R66	28 486.88	2 715 003.03
L67	28 265.57	2 714	219.85	R67	28 493.62	2 714 997.68
L68	28 236.63	2 714	193.11	R68	28 422.86	2 714 925.73
L69	28 202.42	2 714	215.04	R69	28 320.92	2 714 825.60
L70	28 089.34	2 714	354.16	R70	28 212.72	2 714 732.10
L71	28 078.41	2 714	341.64	R71	27 984.35	2 714 546.56
L72	28 011.02	2 714	264.51	R72	27 964.57	2 714 570.86
L73	27 945.84	2 714	189.90	R73	27 902.26	2 714 647.43
L74	27 881.09	2 714	093.30	R74	27 871.44	2 714 622.33
L75	27 824.32	2 713	991.93	R75	27 941.57	2 714 536.01
L76	27 786.24	2 713	909.29	R76	28 022.24	2 714 436.73
L77	27 775.70	2 713	886.41	R77	28 012.07	2 714 423.02
L78	27 735.75	2 713	777.32	R78	27 876.78	2 714 240.55
L79	27 704.41	2 713	665.34	R79	27 811.78	2 714 135.96
L80	27 686.84	2 713	574.90	R80	27 751.76	2 714 028.92
L81	27 681.76	2 713	549.76	R81	27 748.13	2 714 021.04
L82	27 676.78	2 713	512.53	R82	27 700.45	2 713 917.50
L83	27 634.65	2 713	113.56	R83	27 686.92	2 713 880.66
L84	27 603.05	2 712	807.76	R84	27 684.25	2 713 873.38
L85	27 597.20	2 712	759.88	R85	27 658.35	2 713 802.86
L86	27 598.14	2 712	759.99	R86	27 625.09	2 713 684.12
L87	27 581.95	2 712	603.74	R87	27 605.14	2 713 577.11
L88	27 579.99	2 712	584.85	R88	27 603.26	2 713 566.98
L89	27 570.04	2 712	564.41	R89	27 601.14	2 713 555.62
L90	27 538.92	2 712	391.31	R90	27 594.72	2 713 498.43
L91	27 491.20	2 712	184.81	R91	27 555.08	2 713 121.78
L92	27 431.10	2 711	980.86	R92	27 523.51	2 712 815.98
L93	27 423.01	2 711	956.35	R93	27 497.12	2 712 610.72
L94	27 364.86	2 711	780.22	R94	27 491.69	2 712 580.47
L95	27 290.56	2 711	591.66	R95	27 485.06	2 712 538.38
L96	27 212.60	2 711	419.43	R96	27 482.64	2 712 523.11
L97	27 203.79	2 711	399.97	R97	27 460.56	2 712 407.39
L98	27 106.45	2 711	210.89	R98	27 413.68	2 712 204.76
L99	27 040.18	2 711	096.34	R99	27 356.78	2 712 004.75
L100	27 138.84	2 711	052.18	R100	27 323.81	2 711 907.78
L101	27 169.67	2 711	038.39	R101	27 289.83	2 711 807.83
L102	27 211.91	2 711	019.48	R102	27 217.17	2 711 623.51

Vel
Sheet

27

Van
of

32

P1059/18

PADRESERWE KOÖRDINATE / ROAD RESERVE CO-ORDINATES						
LINKERKANT/LEFT HAND SIDE				REGTERKANT/RIGHT HAND SIDE		
	Y	X	WG 29°		Y	X
L103	27 259.82	2 711	014.59	R103	27 131.46	2 711 434.10
L104	27 279.90	2 711	021.75	R104	27 128.69	2 711 428.71
L105	27 315.22	2 711	055.33	R105	27 036.36	2 711 249.14
L106	27 222.74	2 710	858.93	R106	26 945.95	2 711 092.92
L107	27 226.72	2 710	906.21	R107	26 941.63	2 711 090.86
L108	27 218.90	2 710	925.98	R108	26 878.75	2 711 060.86
L109	27 183.56	2 710	957.65	R109	26 825.43	2 711 018.51
L110	27 113.56	2 710	978.01	R110	26 787.11	2 710 962.51
L111	27 068.97	2 710	977.45	R111	26 742.08	2 710 814.21
L112	27 061.49	2 710	976.14	R112	26 718.36	2 710 773.50
L113	27 006.16	2 710	966.48	R113	26 690.94	2 710 726.45
L114	26 959.68	2 710	937.45	R114	26 577.18	2 710 576.61
L115	26 923.00	2 710	895.25	R115	26 477.83	2 710 460.90
L116	26 840.63	2 710	782.02	R116	26 476.23	2 710 459.03
L117	26 787.53	2 710	712.26	R117	26 430.70	2 710 409.30
L118	26 760.94	2 710	677.34	R118	26 234.29	2 710 198.33
L119	26 667.21	2 710	558.65	R119	25 993.18	2 709 939.36
L120	26 532.24	2 710	400.71	R120	25 736.73	2 709 663.91
L121	26 289.40	2 710	139.75	R121	25 470.82	2 709 378.29
L122	26 050.94	2 709	883.51	R122	25 199.05	2 709 086.35
L123	25 792.09	2 709	610.47	R123	24 906.26	2 708 771.81
L124	25 529.46	2 709	323.14	R124	23 839.83	2 707 626.21
L125	25 262.10	2 709	035.83	R125	23 150.97	2 706 885.90
L126	24 970.26	2 708	722.30	R126	23 132.82	2 706 866.40
L127	24 455.42	2 708	169.61	R127	23 115.76	2 706 848.07
L128	23 191.46	2 706	811.74	R128	22 095.20	2 705 751.27
L129	23 154.40	2 706	771.93	R129	20 971.74	2 704 544.21
L130	23 029.16	2 706	650.76	R130	20 746.02	2 704 301.32
L131	22 974.02	2 706	578.33	R131	19 780.72	2 703 264.57
L132	22 779.73	2 706	369.81	R132	18 419.29	2 701 801.08
L133	22 162.07	2 705	705.47	R133	17 884.77	2 701 229.56
L134	21 036.66	2 704	496.13	R134	17 377.91	2 700 716.69
L135	19 840.52	2 703	209.95	R135	17 341.40	2 700 680.03
L136	18 074.97	2 701	314.37	R136	17 306.46	2 700 644.24
L137	17 890.86	2 701	117.00	R137	17 270.72	2 700 607.89
L138	17 817.25	2 701	043.88	R138	17 242.59	2 700 579.64
L139	17 443.00	2 700	670.58	R139	15 477.28	2 698 802.13
L140	17 393.45	2 700	621.77	R140	15 388.09	2 698 711.33
L141	17 366.87	2 700	594.70	R141	15 274.34	2 698 593.98
L142	17 332.90	2 700	559.57	R142	15 171.80	2 698 483.21
L143	17 300.80	2 700	526.26	R143	15 038.74	2 698 332.23
L144	15 565.72	2 698	777.54	R144	14 909.99	2 698 177.75
L145	15 331.83	2 698	538.77	R145	14 785.99	2 698 019.47
L146	15 230.06	2 698	429.23	R146	14 608.25	2 697 777.08
L147	15 098.64	2 698	279.80	R147	14 488.38	2 697 618.10
L148	14 971.87	2 698	127.16	R148	14 363.77	2 697 462.50
L149	14 849.14	2 697	970.94	R149	14 235.28	2 697 311.13
L150	14 759.85	2 697	851.33	R150	14 085.45	2 697 144.74
L151	14 671.69	2 697	729.41	R151	13 692.31	2 696 722.92
L152	14 550.06	2 697	568.24	R152	11 304.66	2 694 159.92
L153	14 425.29	2 697	412.07	R153	11 199.93	2 694 049.72

Vel
Sheet

28

Van
of

32

P1059/18

PADRESERWE KOÖRDINATE / ROAD RESERVE CO-ORDINATES									
LINKERKANT/LEFT HAND SIDE				REGTERKANT/RIGHT HAND SIDE					
	Y	X	WG 29°		Y	X			
L154	14	295.23	2 697	258.40	R154	11	086.21	2 693	940.10
L155	14	214.41	2 697	167.81	R155	10	982.39	2 693	849.10
L156	13	748.22	2 696	667.57	R156	10	858.33	2 693	751.23
L157	11	167.94	2 693	897.45	R157	10	729.39	2 693	660.25
L158	11	142.19	2 693	880.21	R158	10	629.95	2 693	596.45
L159	11	034.78	2 693	786.60	R159	10	545.76	2 693	547.03
L160	10	907.50	2 693	686.02	R160	10	460.96	2 693	500.94
L161	10	775.16	2 693	592.44	R161	10	287.79	2 693	415.94
L162	10	671.32	2 693	528.61	R162	8	661.53	2 692	645.32
L163	10	587.19	2 693	473.53	R163	7	006.85	2 691	861.03
L164	10	442.77	2 693	401.66	R164	6	743.55	2 691	736.42
L165	8	689.72	2 692	569.92	R165	6	612.33	2 691	677.66
L166	7	075.08	2 691	804.64	R166	6	482.68	2 691	619.44
L167	6	988.84	2 691	763.77	R167	6	343.15	2 691	559.41
L168	6	862.17	2 691	703.88	R168	6	231.79	2 691	512.19
L169	6	643.47	2 691	602.53	R169	5	900.90	2 691	371.93
L170	6	423.16	2 691	506.77	R170	5	397.39	2 691	158.54
L171	6	328.46	2 691	466.24	R171	5	190.26	2 691	078.28
L172	6	005.61	2 691	329.38	R172	5	097.93	2 691	031.98
L173	5	429.01	2 691	084.98	R173	5	085.58	2 691	025.02
L174	5	231.19	2 690	992.54	R174	5	009.33	2 690	978.28
L175	5	145.61	2 690	947.30	R175	4	926.27	2 690	918.00
L176	5	125.07	2 690	934.88	R176	4	847.10	2 690	851.92
L177	5	080.53	2 690	907.96	R177	4	772.64	2 690	780.68
L178	5	062.72	2 690	897.28	R178	4	664.07	2 690	656.69
L179	4	982.03	2 690	843.38	R179	4	589.94	2 690	565.26
L180	4	907.97	2 690	786.19	R180	4	551.15	2 690	516.86
L181	4	824.82	2 690	714.93	R181	4	512.17	2 690	468.14
L182	4	748.23	2 690	631.61	R182	4	259.00	2 690	160.64
L183	4	652.27	2 690	514.74	R183	4	071.28	2 689	926.60
L184	4	649.06	2 690	511.03	R184	4	017.99	2 689	857.78
L185	4	642.92	2 690	503.37	R185	3	887.67	2 689	689.47
L186	4	607.16	2 690	458.78	R186	2	603.15	2 688	087.88
L187	2	701.38	2 688	082.43	R187	2	353.44	2 687	776.52
L188	2	416.64	2 687	727.18	R188	2	339.23	2 687	758.81
L189	2	324.01	2 687	611.09	R189	2	182.65	2 687	563.58
L190	2	221.61	2 687	461.85	R190	2	063.67	2 687	467.26
L191	2	242.02	2 687	387.52	R191	2	050.20	2 687	450.49
L192	2	232.73	2 687	375.90	R192	1	931.69	2 687	302.93
L193	1	983.35	2 687	064.21	R193	1	803.78	2 687	257.79
L194	1	974.96	2 687	053.68	R194	1	754.22	2 687	240.25
L195	1	960.23	2 687	013.09	R195	1	763.49	2 687	192.07
L196	1	949.99	2 686	984.72	R196	1	713.72	2 687	174.40
L197	1	914.84	2 686	944.22	R197	1	710.88	2 687	173.38
L198	1	881.43	2 686	932.37	R198	1	699.51	2 687	156.94
L199	1	861.40	2 686	925.25	R199	1	703.12	2 687	006.10
L200	1	853.62	2 686	943.87	R200	1	703.94	2 686	966.57
L201	1	831.27	2 686	997.21	R201	1	688.41	2 686	947.20
L202	1	805.63	2 686	963.71	R202	1	529.60	2 686	749.18
L203	1	691.64	2 686	814.70	R203	1	303.62	2 686	467.24
L204	1	598.53	2 686	693.08	R204	1	272.67	2 686	428.66

Vel Sheet	29	Van of	32	P1059/18
--------------	----	-----------	----	----------

PADRESERWE KOÖRDINATE / ROAD RESERVE CO-ORDINATES							
LINKERKANT/LEFT HAND SIDE				REGTERKANT/RIGHT HAND SIDE			
	Y	X	WG 29°		Y	X	
L205	1	592.80	2 686 685.59	R205	731.12	2 685 753.53	
L206	1	353.68	2 686 401.85	R206	276.19	2 685 186.07	
L207	1	335.00	2 686 378.08	R207	105.89	2 684 973.53	
L208		830.43	2 685 749.23	R208	701.48	2 683 967.10	
L209		338.24	2 685 136.26	R209	-1 152.76	2 683 404.42	
L210		201.79	2 684 965.55	R210	-1 603.38	2 682 842.74	
L211	-	663.09	2 683 887.26	R211	-1 676.59	2 682 761.13	
L212	-	670.14	2 683 878.37	R212	-2 059.51	2 682 285.03	
L213	-1	114.36	2 683 324.27	R213	-2 312.89	2 681 970.27	
L214	-1	509.52	2 682 831.59	R214	-2 368.92	2 681 887.98	
L215	-1	565.00	2 682 762.49	R215	-2 870.34	2 681 262.58	
L216	-1	973.69	2 682 252.63	R216	-2 880.16	2 681 250.62	
L217	-2	844.42	2 681 166.94	R217	-2 906.00	2 681 219.15	
L218	-2	881.88	2 681 066.25	R218	-2 943.00	2 681 183.99	
L219	-2	984.76	2 680 939.58	R219	-3 030.90	2 681 087.36	
L220	-3	027.10	2 680 856.23	R220	-3 078.55	2 681 049.60	
L221	-2	950.91	2 680 794.14	R221	-3 134.70	2 681 020.59	
L222	-2	948.75	2 680 773.02	R222	-3 208.63	2 680 990.60	
L223	-3	086.81	2 680 603.68	R223	-3 273.22	2 680 962.00	
L224	-3	084.14	2 680 582.54	R224	-3 301.66	2 680 946.81	
L225	-3	038.46	2 680 545.42	R225	-3 337.05	2 680 927.90	
L226	-3	051.86	2 680 440.76	R226	-3 376.26	2 680 912.09	
L227	-3	206.41	2 680 381.25	R227	-3 416.96	2 680 895.68	
L228	-3	236.31	2 680 369.74	R228	-3 441.25	2 680 912.06	
L229	-3	246.06	2 680 349.98	R229	-3 357.77	2 680 670.25	
L230	-3	253.63	2 680 374.25	R230	-3 506.75	2 680 495.45	
L231	-3	283.65	2 680 467.56	R231	-3 633.18	2 680 351.70	
L232	-3	309.70	2 680 600.79	R232	-3 846.26	2 680 112.78	
L233	-3	364.79	2 680 536.68	R233	-3 962.43	2 679 982.54	
L234	-3	476.01	2 680 408.78	R234	-4 098.79	2 679 830.06	
L235	-3	504.15	2 680 376.93	R235	-4 274.54	2 679 632.87	
L236	-3	561.27	2 680 312.28	R236	-4 351.28	2 679 546.92	
L237	-3	593.09	2 680 276.26	R237	-4 370.69	2 679 525.08	
L238	-3	712.89	2 680 142.03	R238	-4 586.62	2 679 283.07	
L239	-3	826.96	2 680 014.10	R239	-4 603.35	2 679 264.25	
L240	-3	832.58	2 680 007.92	R240	-4 616.11	2 679 243.61	
L241	-4	079.42	2 679 731.08	R241	-4 620.59	2 679 236.36	
L242	-4	144.62	2 679 658.24	R242	-4 633.25	2 679 230.60	
L243	-4	311.03	2 679 471.83	R243	-4 869.70	2 678 965.91	
L244	-4	332.01	2 679 448.26	R244	-5 072.66	2 678 738.55	
L245	-4	456.80	2 679 308.46	R245	-5 270.71	2 678 516.37	
L246	-4	597.77	2 679 150.38	R246	-5 540.59	2 678 214.11	
L247	-4	712.74	2 679 021.94	R247	-5 580.19	2 678 169.45	
L248	-4	743.22	2 678 995.16	R248	-5 941.87	2 677 764.51	
L249	-4	768.94	2 678 958.67	R249	-5 956.98	2 677 750.43	
L250	-4	850.38	2 678 867.32	R250	-6 164.55	2 677 560.61	
L251	-4	942.68	2 678 763.98	R251	-6 173.96	2 677 543.85	
L252	-5	167.88	2 678 511.52	R252	-6 229.73	2 677 444.50	
L253	-5	251.45	2 678 417.88	R253	-6 281.07	2 677 384.25	
L254	-5	410.58	2 678 239.54	R254	-6 364.20	2 677 290.97	
L255	-5	560.94	2 678 071.05	R255	-6 365.96	2 677 291.43	

Vel
Sheet

30

Van
of

32

P1059/18

PADRESERWE KOÖRDINATE / ROAD RESERVE CO-ORDINATES						
LINKERKANT/LEFT HAND SIDE				REGTERKANT/RIGHT HAND SIDE		
	Y	X	WG 29°		Y	X
L256	-5 869.19	2 677 725.61		R256	-6 491.30	2 677 148.47
L257	-6 071.67	2 677 498.71		R257	-6 568.97	2 677 061.26
L258	-6 240.00	2 677 310.34		R258	-6 642.30	2 676 968.57
L259	-6 277.38	2 677 268.49		R259	-6 694.32	2 676 902.81
L260	-6 416.63	2 677 112.14		R260	-6 742.43	2 676 836.87
L261	-6 428.07	2 677 098.29		R261	-6 800.19	2 676 757.70
L262	-6 554.69	2 676 943.88		R262	-6 867.44	2 676 669.80
L263	-6 628.64	2 676 853.69		R263	-6 892.08	2 676 638.20
L264	-6 795.90	2 676 613.91		R264	-6 895.90	2 676 625.60
L265	-6 804.14	2 676 601.81		R265	-6 978.48	2 676 485.18
L266	-6 830.84	2 676 554.47		R266	-7 110.47	2 676 212.80
L267	-6 880.05	2 676 467.20		R267	-7 160.89	2 676 137.06
L268	-7 059.65	2 676 114.72		R268	-7 168.58	2 676 125.69
L269	-7 068.13	2 676 080.10		R269	-7 224.33	2 676 043.28
L270	-7 131.86	2 675 866.27		R270	-7 248.94	2 676 002.96
L271	-7 258.44	2 675 674.07		R271	-7 268.90	2 675 956.51
L272	-7 394.06	2 675 468.17		R272	-7 402.45	2 675 777.33
L273	-7 393.51	2 675 446.26		R273	-7 422.44	2 675 718.45
L274	-7 432.86	2 675 336.98		R274	-7 443.37	2 675 656.80
L275	-7 554.18	2 675 076.46		R275	-7 473.50	2 675 556.90
L276	-7 660.16	2 674 889.75		R276	-7 752.11	2 674 967.50
L277	-7 677.76	2 674 872.27		R277	-7 806.83	2 674 899.49
L278	-7 971.84	2 674 551.04		R278	-7 998.71	2 674 661.27
L279	-8 167.83	2 674 379.02		R279	-8 165.34	2 674 495.10
L280	-8 192.32	2 674 360.99		R280	-8 332.31	2 674 375.09
L281	-8 307.96	2 674 289.17		R281	-8 646.14	2 674 173.58
L282	-8 460.12	2 674 179.60		R282	-8 683.17	2 674 186.75
L283	-8 522.17	2 674 138.52		R283	-8 736.40	2 674 155.06
L284	-8 564.32	2 674 102.63		R284	-8 787.55	2 674 153.34
L285	-8 567.67	2 674 090.07		R285	-8 908.94	2 674 192.29
L286	-8 596.75	2 674 058.10		R286	-9 000.91	2 674 217.19
L287	-8 636.70	2 673 985.93		R287	-9 159.59	2 674 250.12
L288	-8 605.32	2 673 950.96		R288	-9 187.95	2 674 119.10
L289	-8 535.43	2 673 912.52		R289	-9 168.11	2 674 109.18
L290	-8 490.87	2 673 891.16		R290	-9 154.66	2 674 056.08
L291	-8 422.86	2 673 863.21		R291	-9 284.78	2 673 852.52
L292	-8 497.02	2 673 736.51		R292	-9 371.97	2 673 762.11
L293	-8 523.85	2 673 723.44		R293	-9 514.08	2 673 666.77
L294	-8 755.74	2 673 806.84		R294	-9 828.32	2 673 480.65
L295	-8 777.67	2 673 799.17		R295	-9 836.45	2 673 475.85
L296	-8 810.31	2 673 740.90		R296	-10 076.79	2 673 333.77
L297	-8 820.53	2 673 747.22		R297	-10 698.38	2 672 964.28
L298	-8 799.84	2 673 809.14		R298	-11 809.04	2 672 304.06
L299	-8 921.86	2 673 864.53		R299	-11 827.08	2 672 294.19
L300	-9 099.81	2 673 756.44		R300	-11 866.40	2 672 272.49
L301	-9 178.73	2 673 708.49		R301	-11 917.09	2 672 244.51
L302	-9 318.46	2 673 647.37		R302	-12 074.38	2 672 158.06
L303	-9 478.55	2 673 567.06		R303	-12 543.33	2 671 802.35
L304	-10 113.26	2 673 209.90		R304	-12 681.01	2 671 653.15
L305	-10 555.71	2 672 939.98		R305	-13 553.46	2 670 707.68
L306	-10 729.47	2 672 833.98		R306	-13 574.11	2 670 686.02

Vel Sheet	31	Van of	32	P1059/18
-----------	----	--------	----	----------

PADRESERWE KOÖRDINATE / ROAD RESERVE CO-ORDINATES					
LINKERKANT/LEFT HAND SIDE			REGTERKANT/RIGHT HAND SIDE		
	Y	X	WG 29°	Y	X
L307	-10 785.62	2 672	801.63	R307	-13 819.65 2 670 429.97
L308	-11 794.27	2 672	219.82	R308	-13 838.44 2 670 410.37
L309	-11 911.61	2 672	150.53	R309	-13 872.13 2 670 375.43
L310	-12 103.49	2 672	021.14	R310	-13 885.73 2 670 361.33
L311	-12 276.44	2 671	826.22	R311	-14 014.18 2 670 228.12
L312	-12 478.41	2 671	730.88	R312	-14 033.25 2 670 208.20
L313	-12 703.79	2 671	500.18	R313	-14 146.10 2 670 091.31
L314	-12 707.41	2 671	496.22	R314	-14 529.89 2 669 639.26
L315	-13 387.10	2 670	752.70	R315	-14 565.20 2 669 597.77
L316	-13 484.62	2 670	641.00	R316	-14 597.18 2 669 560.14
L317	-13 500.53	2 670	622.67	R317	-14 716.42 2 669 419.86
L318	-13 842.15	2 670	230.12	R318	-14 744.29 2 669 388.74
L319	-13 917.65	2 670	143.37	R319	-15 717.12 2 668 302.49
L320	-13 936.29	2 670	122.11	R320	-16 291.97 2 667 551.74
L321	-14 044.62	2 669	997.47	R321	-16 429.19 2 667 319.84
L322	-14 462.60	2 669	563.37	R322	-16 630.78 2 667 032.12
L323	-14 467.72	2 669	558.03	R323	-16 716.62 2 667 043.52
L324	-14 484.66	2 669	540.35	R324	-17 078.48 2 666 417.71
L325	-14 524.73	2 669	498.67	R325	-17 157.28 2 666 300.79
L326	-14 609.89	2 669	410.10	R326	-17 391.48 2 665 983.99
L327	-14 724.04	2 669	291.37	R327	-17 484.14 2 665 941.82
L328	-15 517.99	2 668	394.84	R328	-17 527.60 2 665 923.63
L329	-15 590.18	2 668	233.77	R329	-17 563.46 2 665 884.20
L330	-15 619.45	2 668	169.40	R330	-17 580.05 2 665 865.96
L331	-15 851.70	2 667	973.52	R331	-17 710.29 2 665 659.69
L332	-16 471.57	2 667	092.19	R332	-17 866.11 2 665 513.99
L333	-16 679.46	2 666	796.98	R333	-18 493.83 2 664 986.48
L334	-16 772.27	2 666	643.03	R334	-18 972.11 2 664 601.82
L335	-17 457.46	2 665	706.79	R335	-19 001.01 2 664 578.83
L336	-17 482.43	2 665	672.67		
L337	-17 602.08	2 665	581.86		
L338	-17 687.56	2 665	518.63		
L339	-18 266.42	2 665	054.06		
L340	-18 921.30	2 664	529.89		
L341	-18 989.87	2 664	475.99		
AL1	-3 098.53	2 680	496.18		
AL2	-3 142.33	2 680	451.40		
AL3	-3 247.61	2 680	419.12		
AL4	-3 287.53	2 680	529.25		
AL5	-3 230.54	2 680	600.74		

Vel Sheet	32	Van of	32	P1059/18
-----------	----	--------	----	----------