

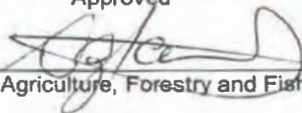
GOVERNMENT NOTICES • GOEWERMENTSKENNISGEWINGS


DEPARTMENT OF AGRICULTURE, FORESTRY AND FISHERIES

NO. 898

31 AUGUST 2018

CONSERVATION OF AGRICULTURAL RESOURCES ACT, 1983
(ACT No. 43 OF 1983)GENERAL NOTICE ON NEW LONG-TERM GRAZING CAPACITY MAP FOR SOUTH AFRICA
2017.

Approved

Minister of Agriculture, Forestry and Fisheries
03-05-2018
Date

CHECKED AND CERTIFIED

16/02/2018
LEGAL SERVICES

GOVERNMENT GAZETTE NOTICE OF 2017

GENERAL NOTICE

DEPARTMENT OF AGRICULTURE, FORESTRY AND FISHERIES

CONSERVATION OF AGRICULTURAL RESOURCES ACT, 1983 (ACT No. 43 of 1983)

LONG-TERM GRAZING CAPACITY MAP FOR SOUTH AFRICA

NOTICE TO PUBLIC

I, Senzeni Zokwana, Minister for Agriculture, Forestry and Fisheries, hereby publish a notice to all interested and affected institutions, organizations and individuals on the long-term grazing capacity map for South Africa developed in line with the provisions of Regulation 10 of the Conservation of Agricultural Resources Act, 1983 (Act no. 43 of 1983) (CARA).



.....

SENZENI ZOKWANA

MINISTER FOR AGRICULTURE, FORESTRY AND FISHERIES

CONSERVATION OF AGRICULTURAL RESOURCES ACT, ACT 43 OF 1983**NEW LONG-TERM GRAZING CAPACITY MAP FOR SOUTH AFRICA 2017****NOTICE TO PUBLIC****PURPOSE**

1. The purpose of this notice is to inform the public and all interested and affected parties of the updated long-term grazing capacity map for implementation and use in rangeland management with the intention to enhance protection of the natural agricultural resources and improved management of veld for sustainable livestock production.

DEFINITIONS

2. In this notice, any word or expression to which a meaning has been assigned in the Act shall have the same meaning so assigned, and unless the context otherwise indicates –

“The Act” means the Conservation of Agricultural Resources Act, 1983 (Act 43 of 1983)

“CARA” refers to the Conservation of Agricultural Resources Act, 1983 (Act 43 of 1983)

“Grazing capacity” in relation to veld, means the production capacity over the long term of that veld to meet the feed requirements of animals in such a manner that the natural vegetation thereon does not deteriorate or is not destroyed;

“Long-term” means the determination of the production capacity of a well-managed veld over a period of longer than 10 years

GAZETTE INCLUDES:

3. An updated long-term grazing capacity map for South Africa developed under Regulation 10 of the Conservation of Agricultural Resources Act, Act no 43 of 1983 (CARA).

SUBJECT: GAZETTE NOTICE OF THE LONG-TERM GRAZING CAPACITY MAP FOR SOUTH AFRICA 2017, FOR IMPLEMENTATION AS GUIDED BY REGULATION 10 OF THE CONSERVATION OF AGRICULTURAL RESOURCES ACT (ACT43 OF 1983).

CLASSIFICATION: CONFIDENTIAL

3.1 The new long term grazing capacity map for South Africa 2017

- 3.1.1 The new long-term grazing capacity map will replace the current map to adhere to the department's responsibility as described in Regulation 10.1 of the Conservation of Agricultural Resources Act, Act 43 of 1983.
- 3.1.2 The Map together with the data is available in the Departmental website on www.daff.gov.za. Attached is the long-term map updated together with maps for all Provinces for illustrative purposes. Alternatively the following link may be used:

<https://www.dropbox.com/sh/rtkmb2qr9y1u94v/AAB2cMCHXy7e77qHvhiEzQola?dl=0>
- 3.1.3 The new long-term grazing capacity map is hereby gazetted for implementation and use with effect from the date published in the Government Gazette.

REPEAL OF OLD GRAZING CAPACITY MAP

4. Grazing capacity map published in the Government Gazette Notice in 1993 is hereby repealed.

NEW TITLE AND COMMENCEMENT

5. This notice is called the Long-term Grazing Capacity Map for South Africa and takes effect on a date determined by the Minister by notice in the gazette.

SUBJECT: GAZETTE NOTICE OF THE LONG-TERM GRAZING CAPACITY MAP FOR SOUTH AFRICA 2017, FOR IMPLEMENTATION AS GUIDED BY REGULATION 10 OF THE CONSERVATION OF AGRICULTURAL RESOURCES ACT (ACT43 OF 1983).

CLASSIFICATION: CONFIDENTIAL

For more information please contact the Executive Officer for Conservation of Agricultural Resources Act, Act No. 43 of 1983 (CARA), using the details below:

The Director: Land Use and Soil Management, Attention Ms RL Bosoga.

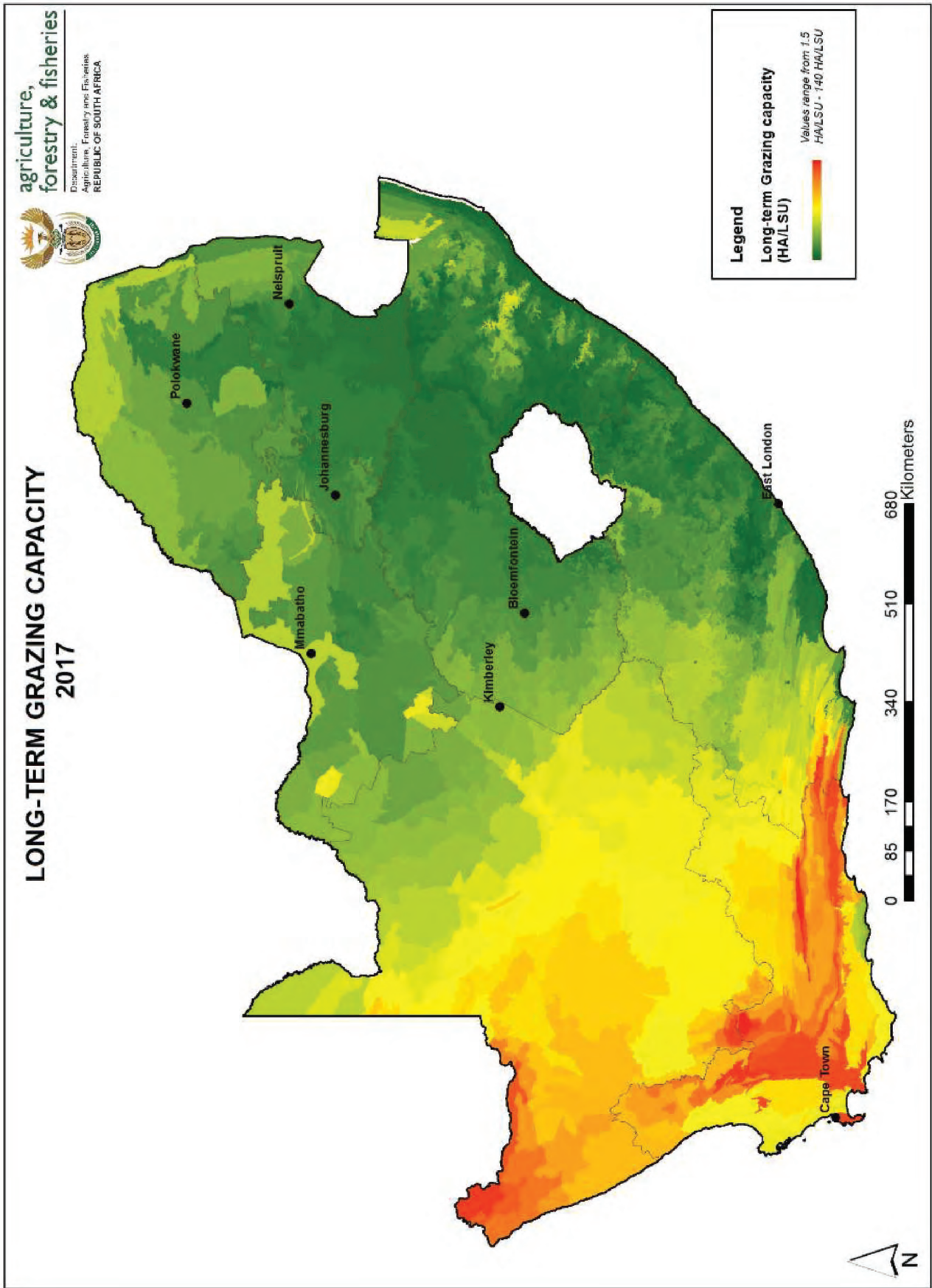
Post to: Private Bag X 120, Pretoria, 0001; or

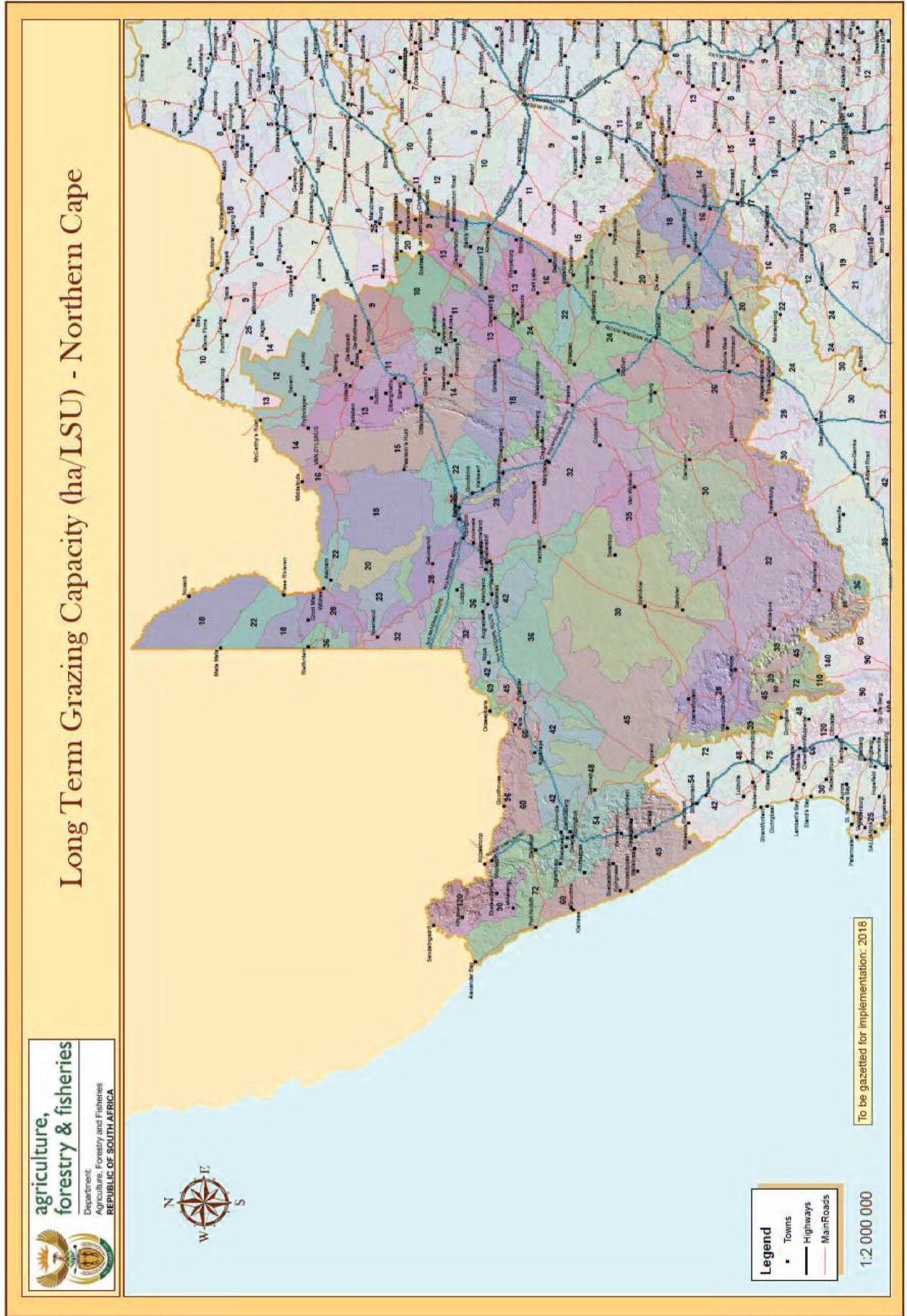
Deliver To: 244 Delpen Building, Corner Annie Botha and Union Street, Riviera, Pretoria; or

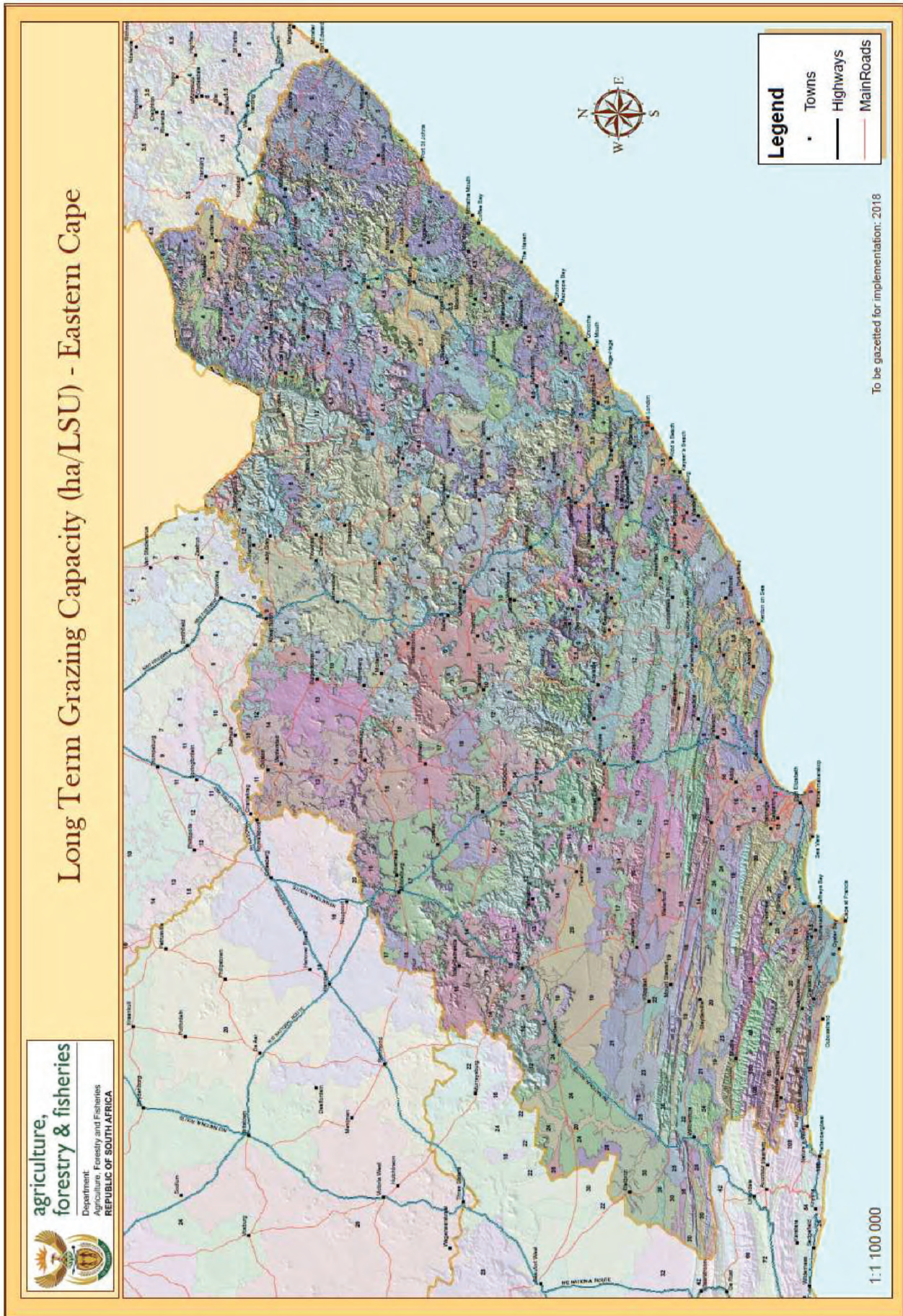
Enquiries may be emailed to: MpumeN@daff.gov.za alternatively call (012) 319 7567 or to AnnelizaC@daff.gov.za alternatively call (012) 319 7508

SUBJECT: GAZETTE NOTICE OF THE LONG-TERM GRAZING CAPACITY MAP FOR SOUTH AFRICA 2017, FOR IMPLEMENTATION AS GUIDED BY REGULATION 10 OF THE CONSERVATION OF AGRICULTURAL RESOURCES ACT (ACT43 OF 1983).

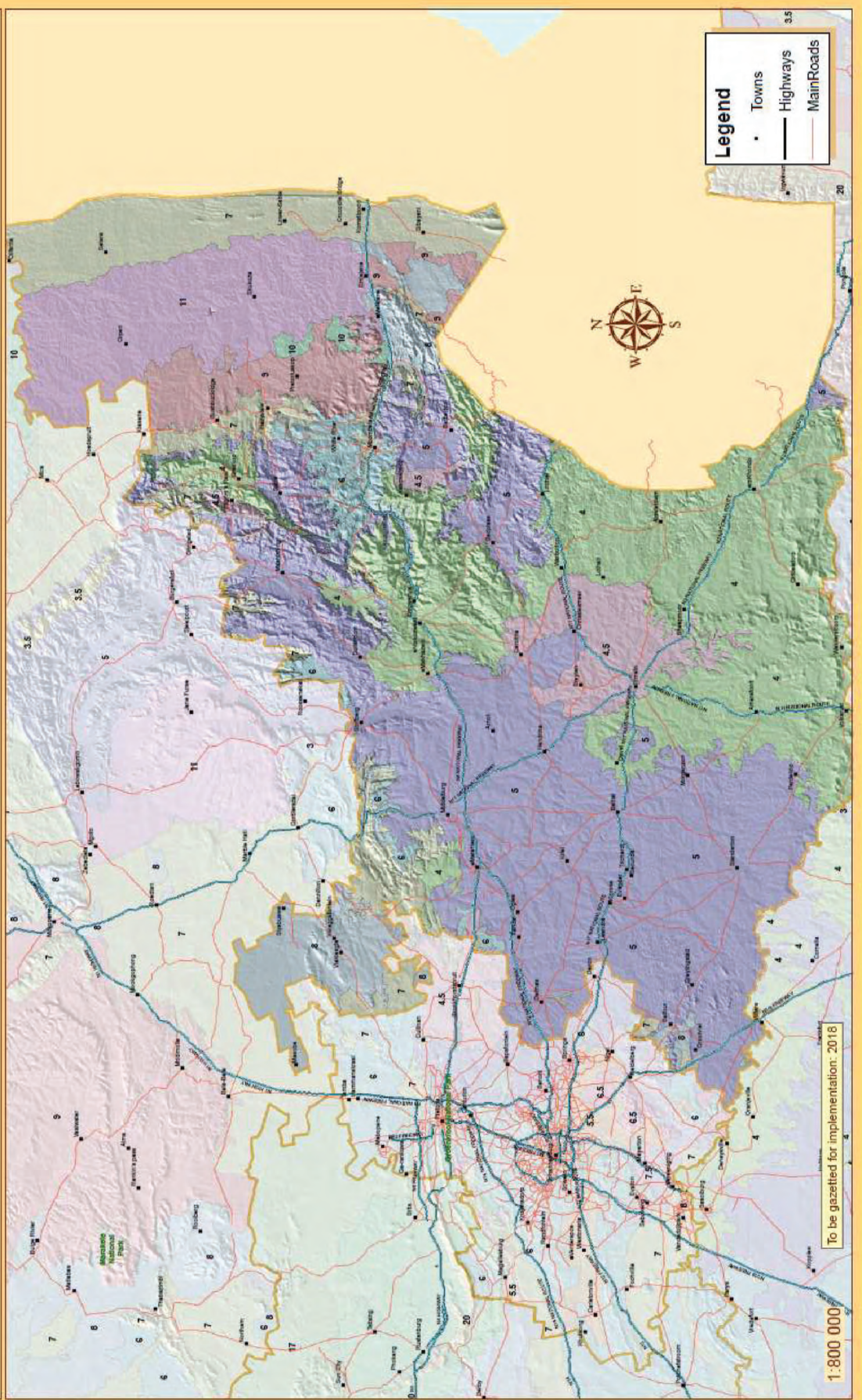
CLASSIFICATION: CONFIDENTIAL







Long Term Grazing Capacity (ha/LSU) - Mpumalanga

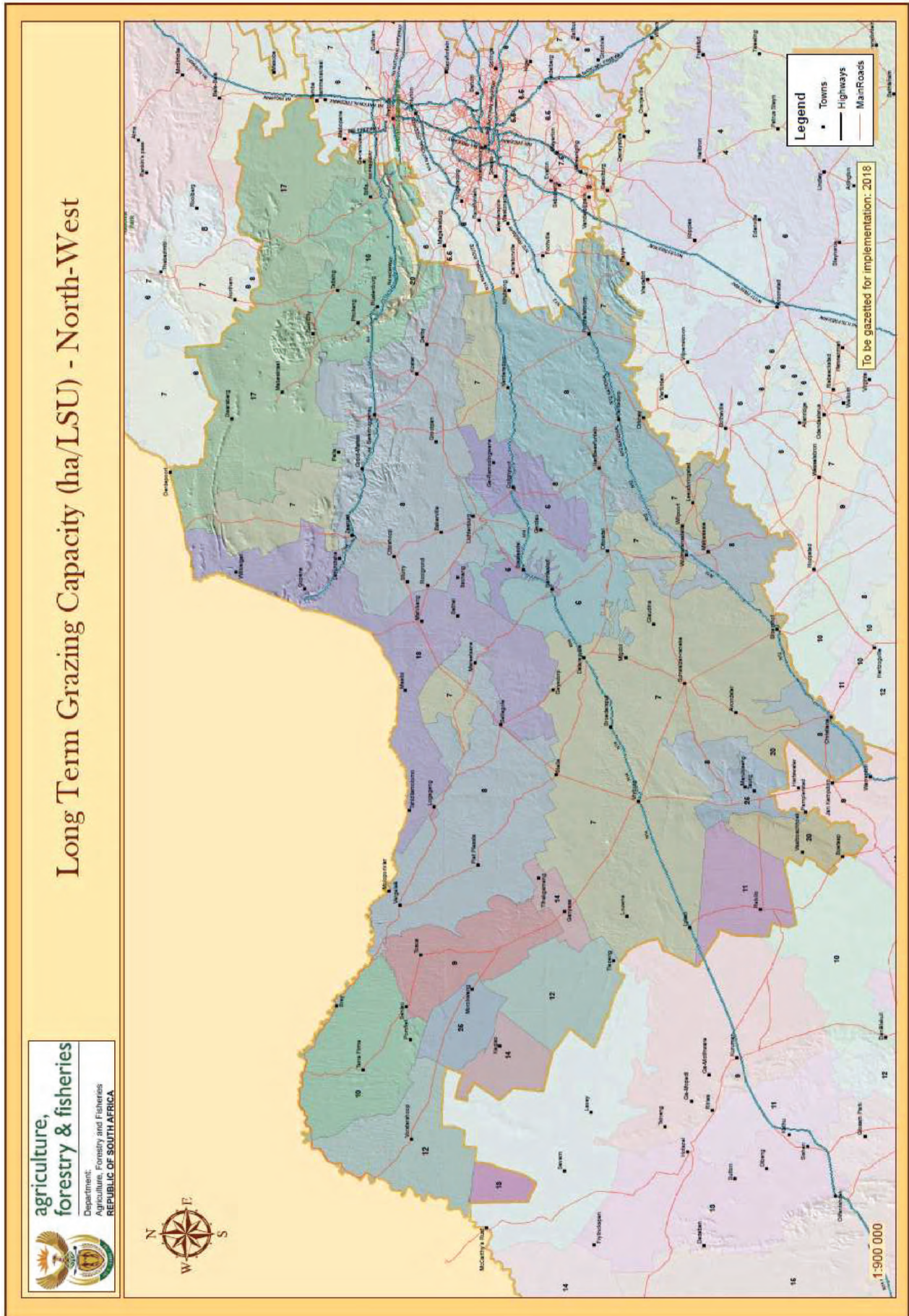


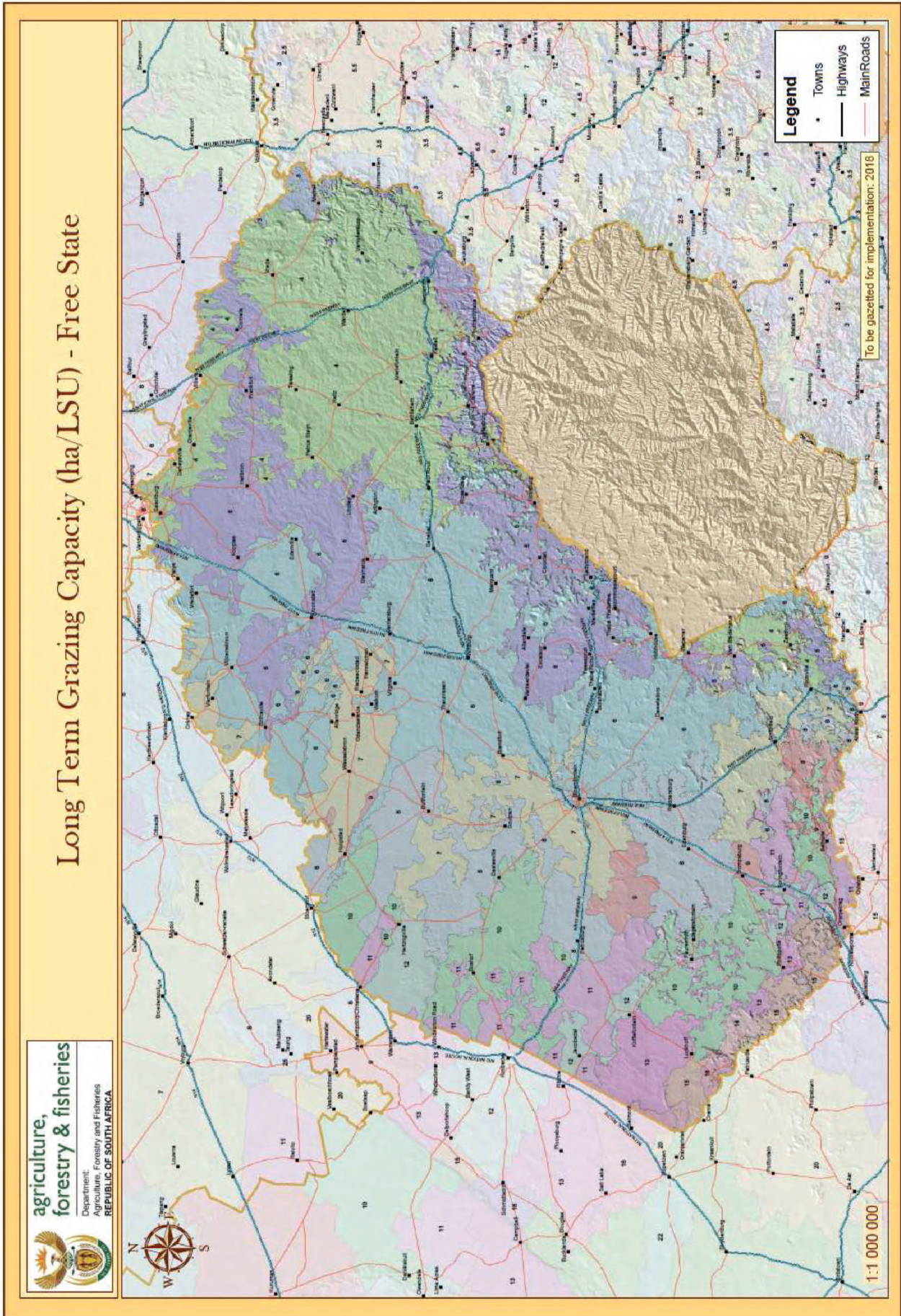
Legend

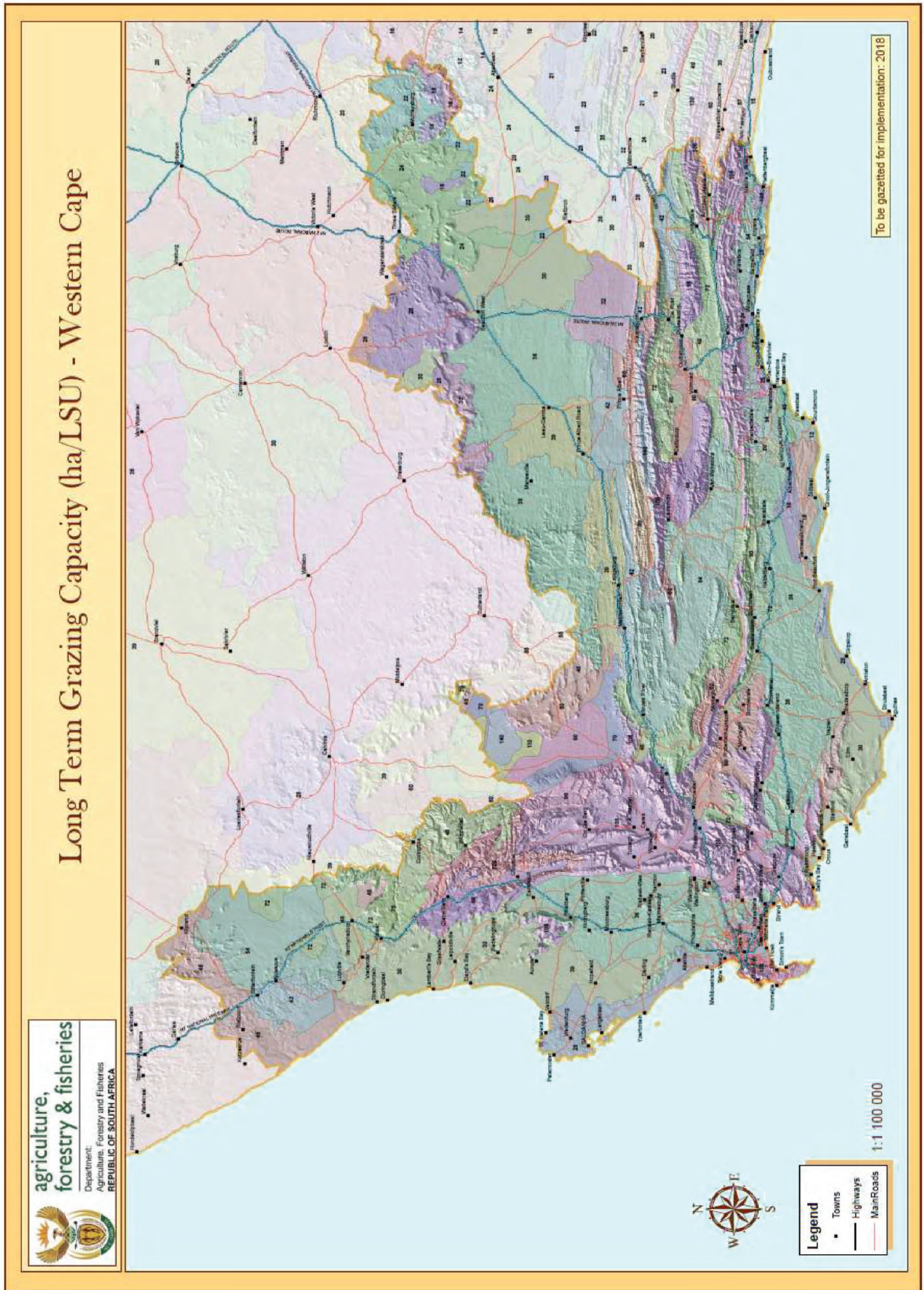
- Towns
- Highways
- Main Roads

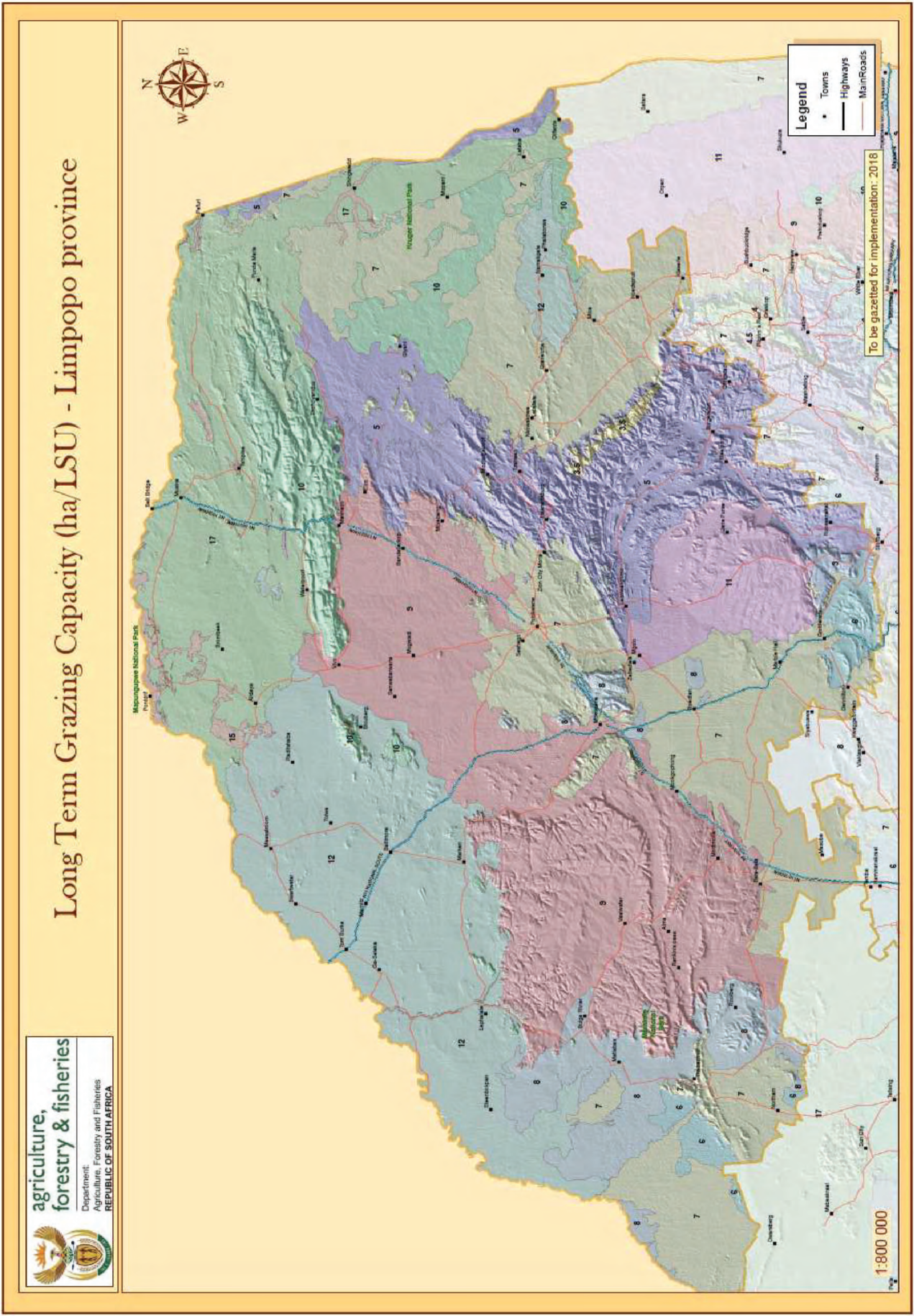
To be gazetted for implementation: 2018

1:800 000









Long Term Grazing Capacity (ha/LSU) - Limpopo province

agriculture, forestry & fisheries
Department: Agriculture, Forestry and Fisheries
REPUBLIC OF SOUTH AFRICA

