

DEPARTMENT OF TRANSPORT

NO. 278

23 MARCH 2018

**THE SOUTH AFRICAN NATIONAL ROADS  
AGENCY SOC LIMITED**

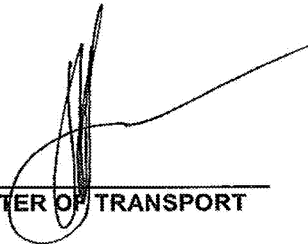
Registration No: 1998/009584/30

**DECLARATION AMENDMENT OF NATIONAL ROAD R52 SECTION 1**

AMENDMENT OF DECLARATION No. 784 OF 2012.

By virtue of Section 40(1)(b) of The South African National Roads Agency Limited and National Roads Act, 1998 (Act No. 7 of 1998), I hereby amend Declaration No. 784 of 2012 by substituting paragraph E of the Schedule, being the descriptive declaration of the route from its junction with National Road N14 Section 11 at Biesiesvlei up to its junction with National Road R503 Section 2 at Lichtenburg, with the accompanying sheets 1 to 10 of Plan No. P914/16.

**(National Road R52 Section 1: Biesiesvlei – Lichtenburg)**

---

MINISTER OF TRANSPORT

## DEPARTEMENT VAN VERVOER

NO. 278

23 MAART 2018

**DIE SUID-AFRIKAANSE NASIONALE  
PADAGENTSKAP MSB BEPERK**

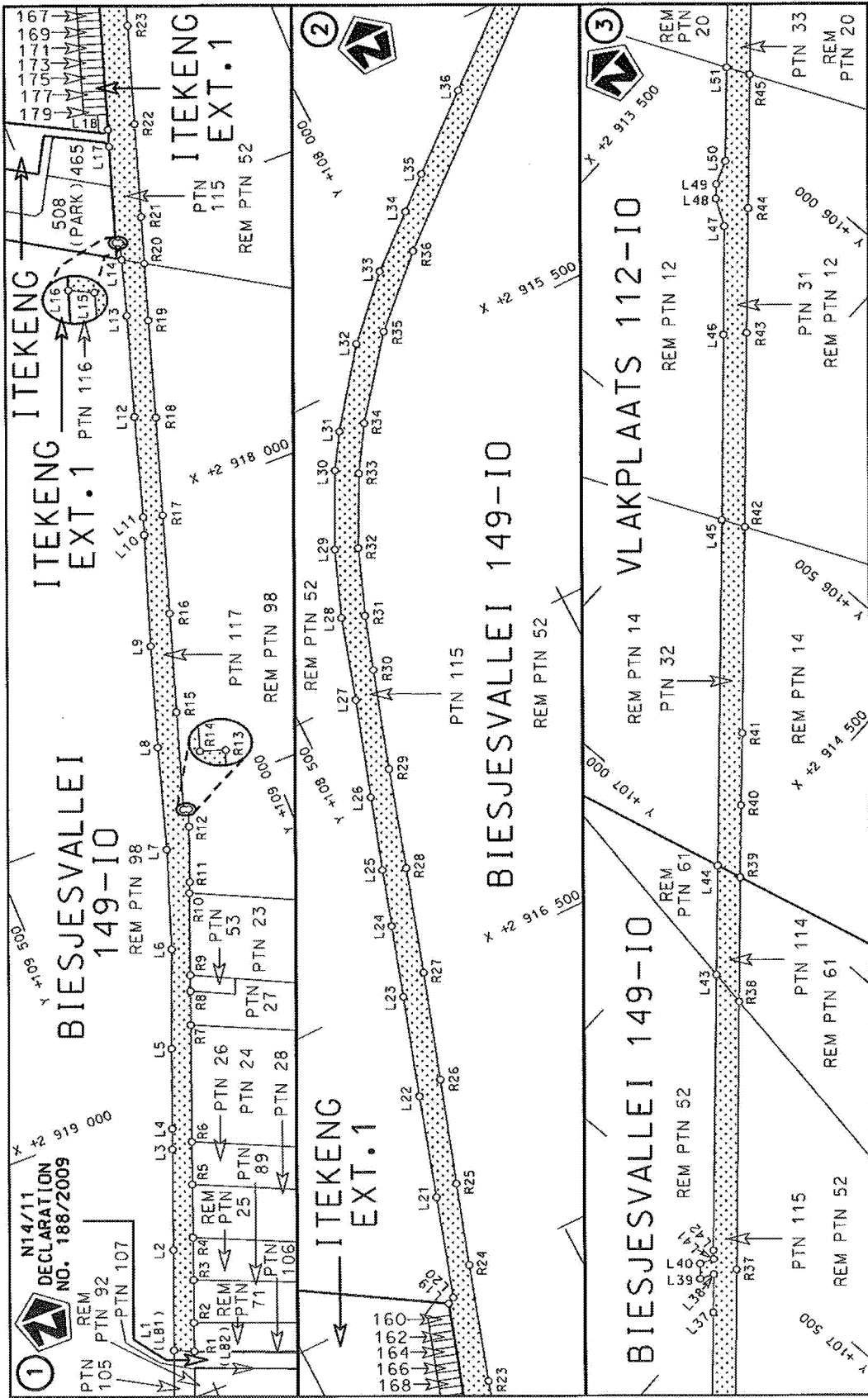
Registrasie No: 1998/009584/30

**VERKLARING WYSIGING VAN NASIONALE PAD R52 SEKSIE 1**

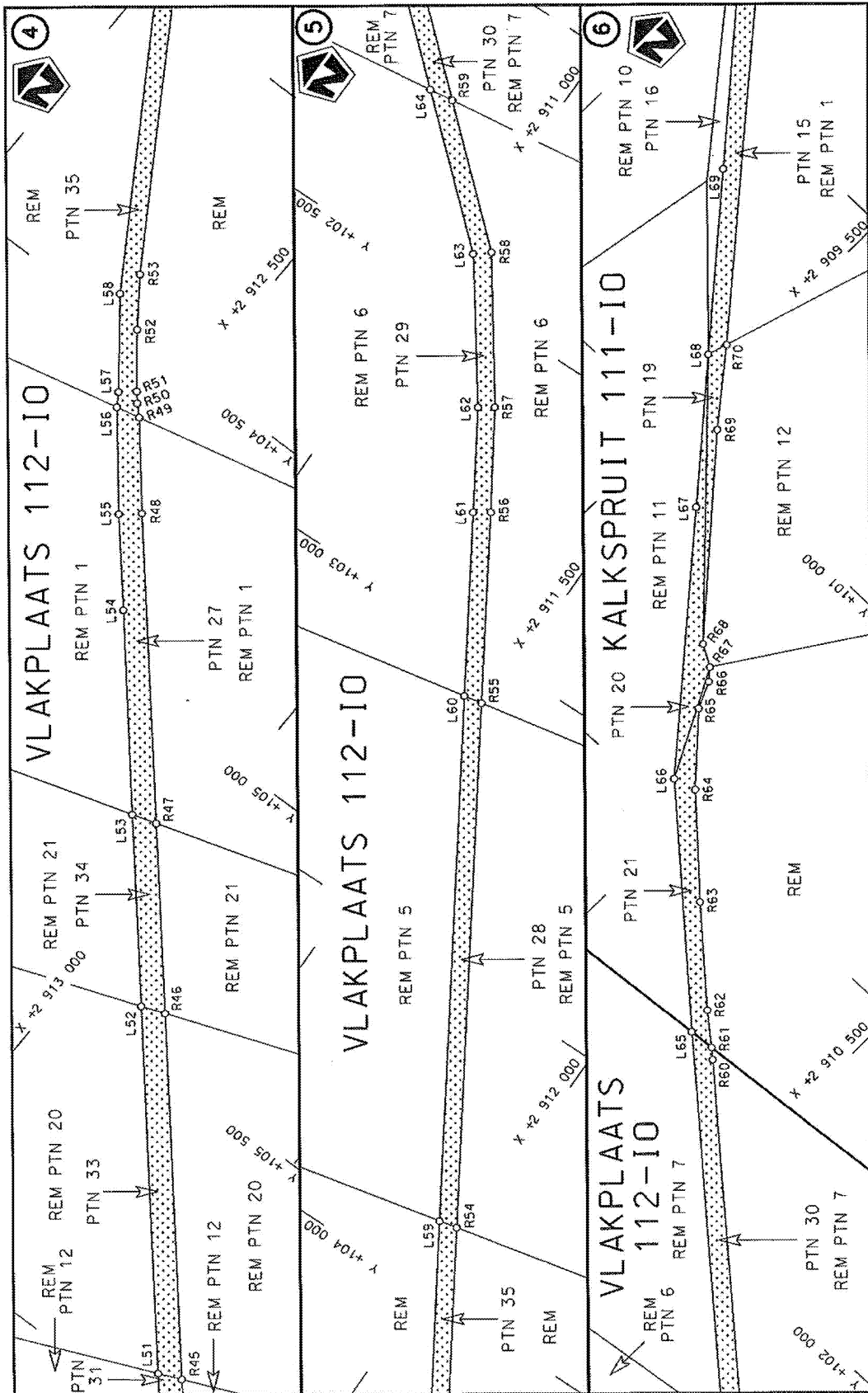
WYSIGING VAN VERKLARING No. 784 VAN 2012.

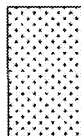
Kragtens Artikel 40(1)(b) van die Wet op die Suid-Afrikaanse Nasionale Padagentskap Beperk en op Nasionale Paaie, 1998 (Wet No. 7 van 1998), wysig ek hiermee Verklaring No. 784 van 2012 deur paragraaf E van die Skedule te vervang, synde die gedeelte van die beskrywende verklaring van die pad vanaf die aansluiting met Nasionale Pad N14 Seksie 11 by Biesiesvlei tot by die aansluiting met Nasionale Pad R503 Seksie 2 by Lichtenburg, met bygaande velle 1 tot 10 van Plan No. P914/16.

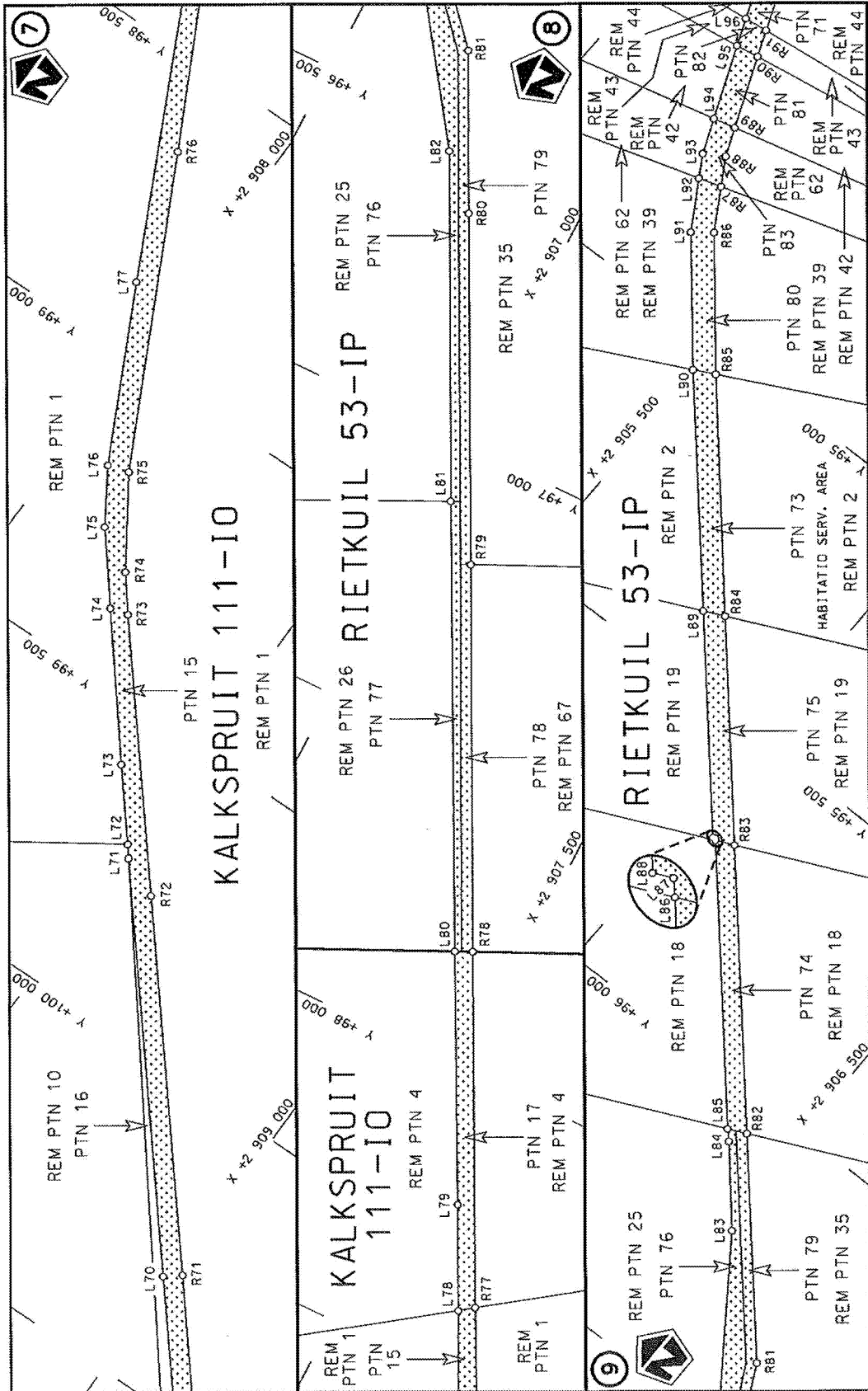
**(Nasionale Pad R52 Seksie 1: Biesiesvlei – Lichtenburg)**  
\_\_\_\_\_  
MINISTER VAN VERVOER

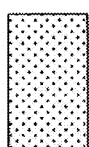


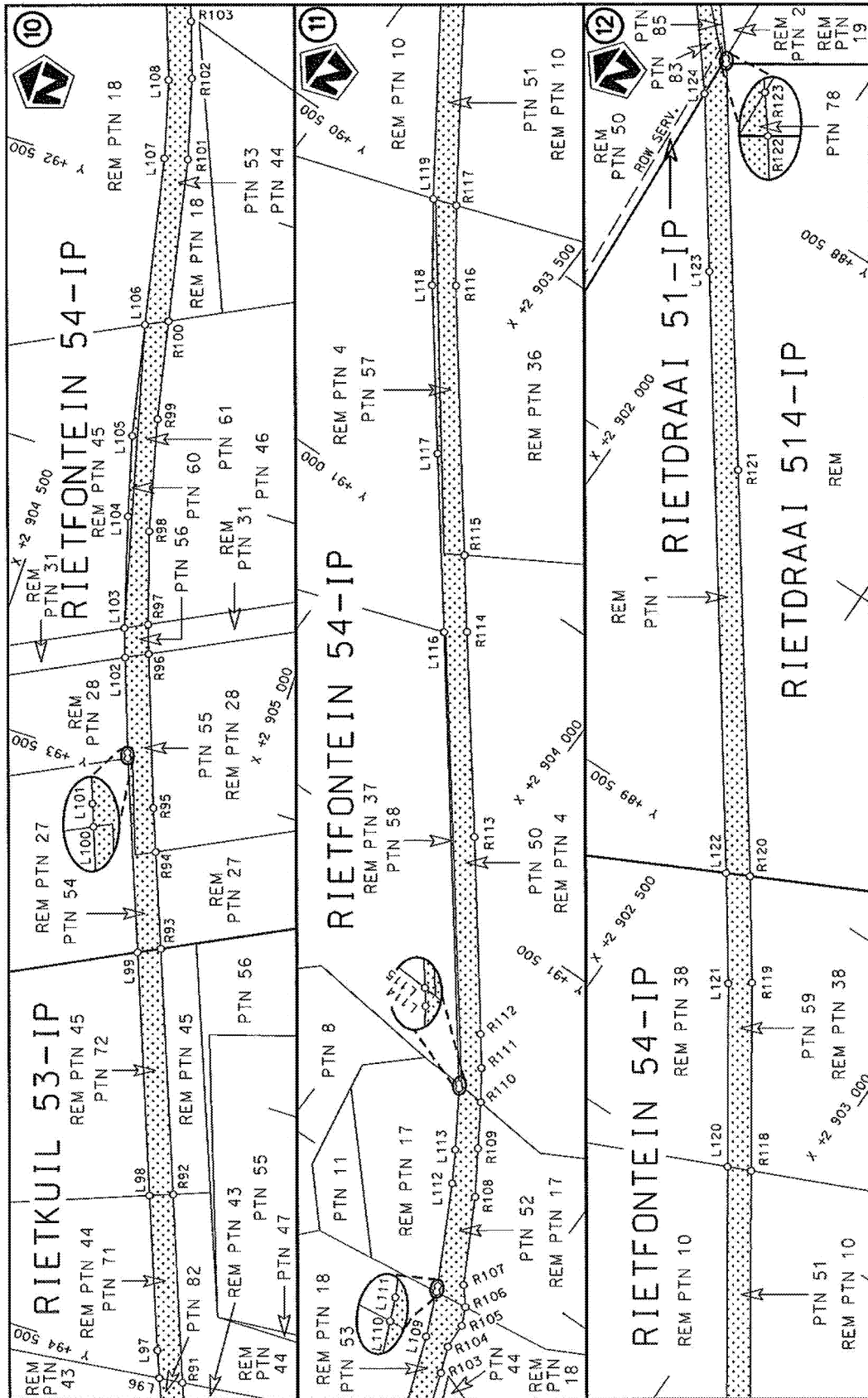
<p>Die Suid-Afrikaanse Nasionale Padagentskap MSB Bpk The South African National Roads Agency SOC Ltd</p>	<p>Die figuur getoon The figure shown</p>		<p>steilte padreserwe voor van 'n gedeelte represents the road reserve of a portion van Nasionale Roete R52 of National Route</p>	<p>Vel Sheet 1 of 10 Plan P914/16</p>
---	---	--	---	---




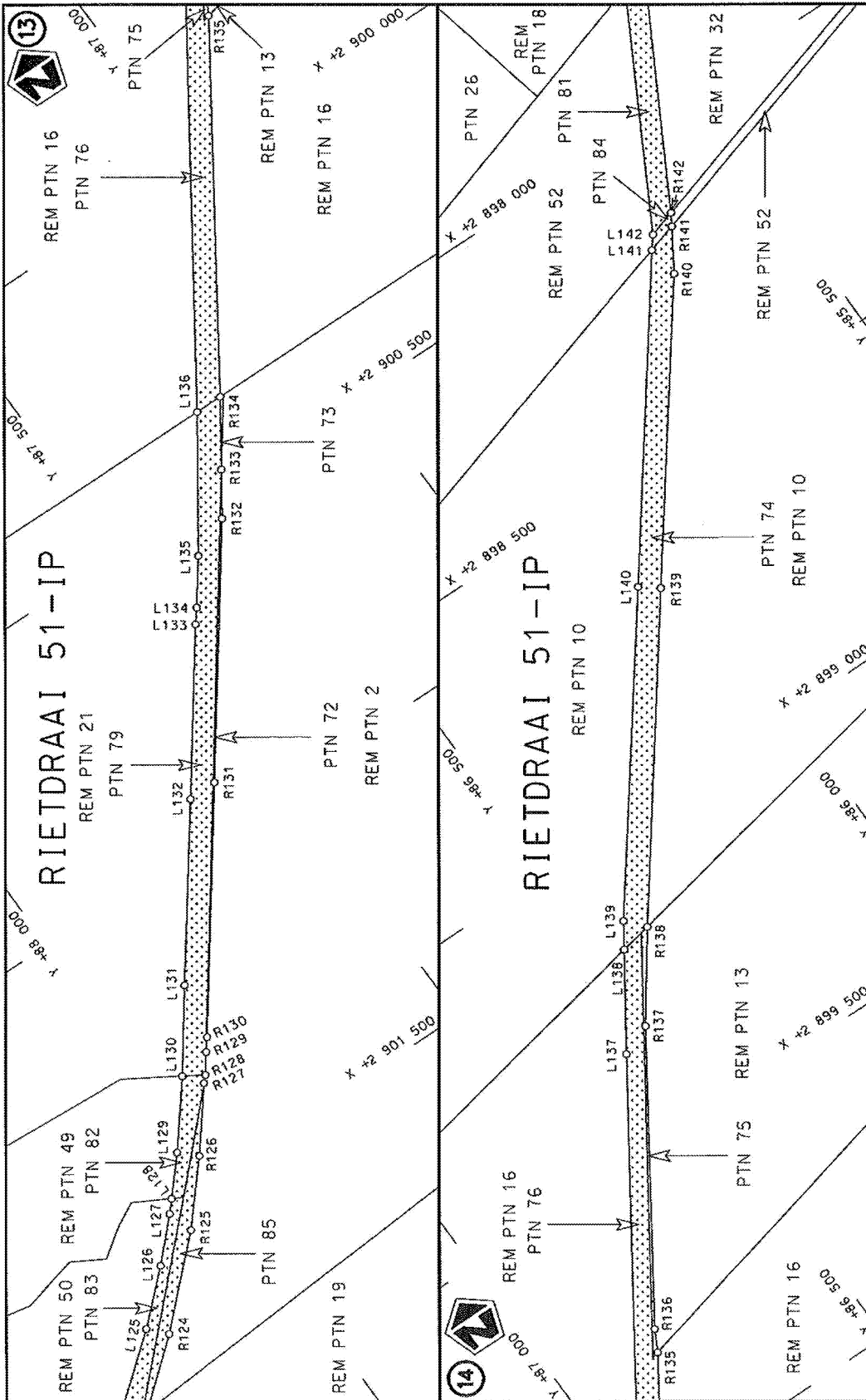
<p>Die Suid Afrikaanse Nasionale Padagentskap MSB Bpk The South African National Roads Agency SOC Ltd</p>	<p>Die figuur getoon The figure shown</p>	<p>stelt die padreserwe voor van 'n gedeelte represents the road reserve of a portion van Nasionale Roete R52 of National Route</p>	<p>Vel van 10 Sheet 2 of 10 Plan P914/16</p>
		<p>1</p>	<p>1</p>

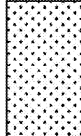


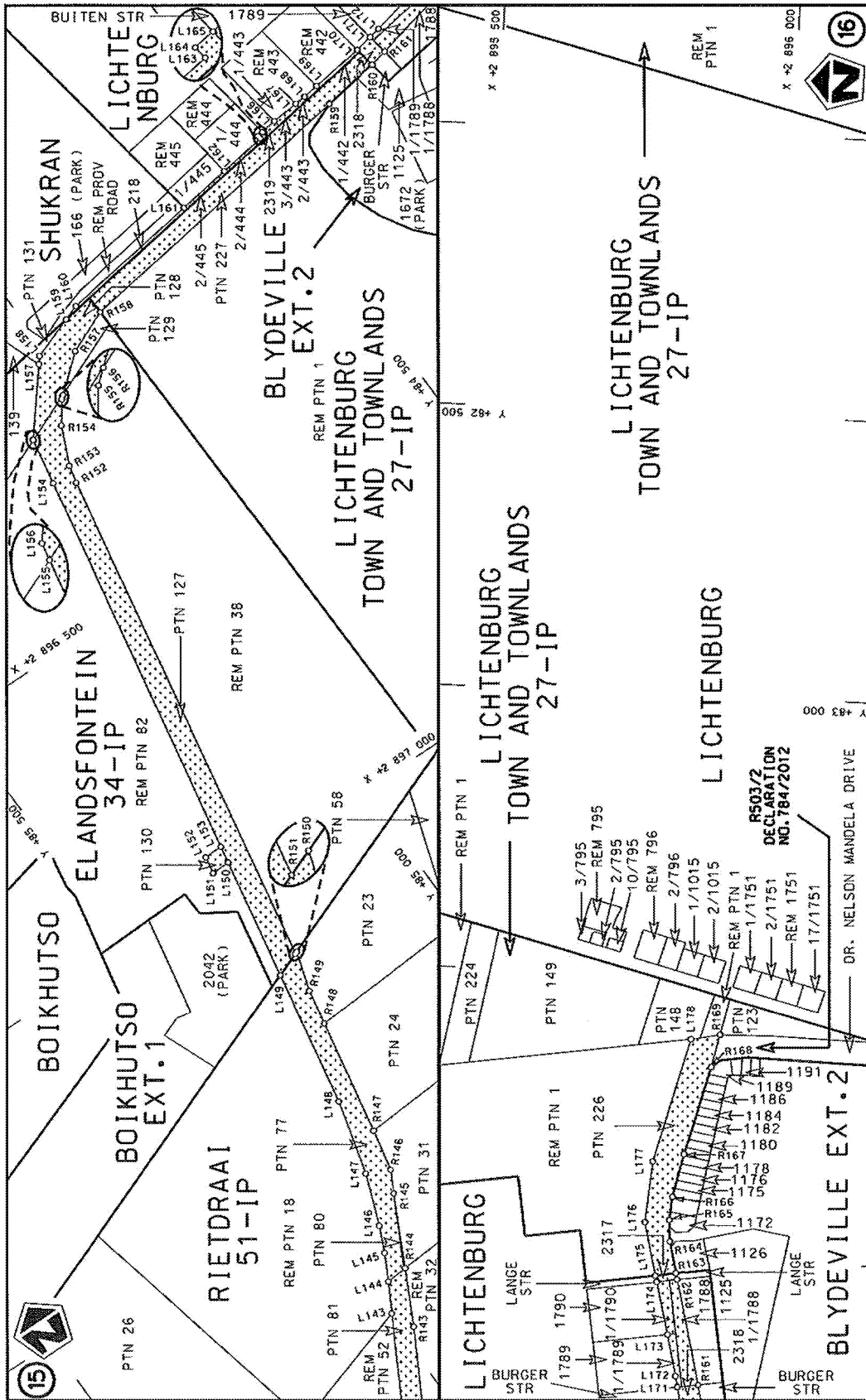
<p>Die Suid-Afrikaanse Nasionale Padagattenskap MSB Bpk The South African National Roads Agency SOC Ltd</p>	<p>Die figuur getoon The figure shown</p>		<p>steldie padreserwe voor van 'n gedeelte represents the road reserve of a portion van Nasionale Roete R52 of National Route</p>	<p>Vel Sheet 3 of 10 Plan P914/16</p>
---	---	---	---	---

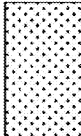


Die Suid-Afrikaanse Nasionale Padagentskap MSB Bpk The South African National Roads Agency SOC Ltd	Die figuur getoon The figure shown		stelsel oorskerwe voor van 'n gedeelte represents the road reserve of a portion van Nasionale Roete R52 of National Route Section	Vel Sheet 4 of 10
				Plan P914/16



<p>Vel Sheet 5 of 10</p> <p>Plan P914/16</p>	<p>1</p> <p>stel die padreserwe voor van 'n gedeelte represents the road reserve of a portion van Nasionale Roete R52 of National Route</p>	 <p>Die figuur getoon The figure shown</p>	<p>Die Suid-Afrikaanse Nasionale Padagentskap MSB Bpk The South African National Roads Agency SOC Ltd</p>
--	---	---	---



<p>Die Suid-Afrikaanse Nasionale Padagentskap MSB Bpk The South African National Roads Agency SOC Ltd</p>	<p>Die figuur getoon The figure shown</p> 	<p>stelt die padreserve voor van 'n gedeelte represents the road reserve of a portion van Nasionale Roete R52 of National Route</p>	<p>Vel Sheet 6 of 10 Plan P914/16</p>
---	---	---	---



PADRESERWE KOÖRDINATE / ROAD RESERVE CO-ORDINATES					
LINKERKANT/LEFT HAND SIDE			REGTERKANT/RIGHT HAND SIDE		
	Y	X	WG 27°	Y	X
L1	109 539.99	2 919 409.68	R1	109 509.18	2 919 423.85
L2	109 474.72	2 919 243.30	R2	109 490.83	2 919 376.45
L3	109 410.12	2 919 076.50	R3	109 463.41	2 919 305.69
L4	109 396.69	2 919 042.66	R4	109 436.08	2 919 235.03
L5	109 345.11	2 918 909.78	R5	109 402.00	2 919 146.93
L6	109 279.52	2 918 745.20	R6	109 374.74	2 919 076.47
L7	109 221.33	2 918 577.27	R7	109 299.76	2 918 882.64
L8	109 167.59	2 918 402.68	R8	109 277.88	2 918 826.09
L9	109 111.84	2 918 230.77	R9	109 267.66	2 918 799.65
L10	109 048.45	2 918 042.69	R10	109 214.91	2 918 663.29
L11	109 038.39	2 918 012.79	R11	109 207.14	2 918 645.16
L12	108 985.77	2 917 840.63	R12	109 171.43	2 918 553.07
L13	108 931.25	2 917 668.63	R13	109 160.37	2 918 524.47
L14	108 902.25	2 917 572.20	R14	109 169.06	2 918 521.49
L15	108 893.62	2 917 543.85	R15	109 115.46	2 918 355.63
L16	108 900.55	2 917 540.40	R16	109 060.98	2 918 188.11
L17	108 847.90	2 917 377.52	R17	109 006.82	2 918 021.57
L18	108 838.59	2 917 348.75	R18	108 952.52	2 917 855.29
L19	108 737.42	2 917 035.77	R19	108 899.98	2 917 689.97
L20	108 725.61	2 917 029.46	R20	108 868.62	2 917 593.11
L21	108 670.65	2 916 857.59	R21	108 842.87	2 917 513.72
L22	108 615.91	2 916 684.27	R22	108 792.34	2 917 355.98
L23	108 560.96	2 916 513.27	R23	108 738.65	2 917 188.66
L24	108 522.00	2 916 391.83	R24	108 675.21	2 916 990.20
L25	108 491.25	2 916 295.95	R25	108 629.49	2 916 850.61
L26	108 450.54	2 916 171.46	R26	108 570.91	2 916 673.76
L27	108 395.39	2 916 004.82	R27	108 510.64	2 916 490.66
L28	108 350.84	2 915 863.34	R28	108 453.67	2 916 310.93
L29	108 306.25	2 915 749.60	R29	108 400.33	2 916 140.23
L30	108 242.38	2 915 623.66	R30	108 344.53	2 915 970.35
L31	108 204.35	2 915 565.06	R31	108 313.85	2 915 878.00
L32	108 108.49	2 915 438.63	R32	108 269.81	2 915 765.11
L33	108 015.02	2 915 341.01	R33	108 208.73	2 915 646.23
L34	107 927.70	2 915 265.06	R34	108 160.46	2 915 570.53
L35	107 873.25	2 915 217.49	R35	108 057.18	2 915 439.95
L36	107 750.46	2 915 112.42	R36	107 947.63	2 915 333.79
L37	107 614.41	2 914 996.31	R37	107 531.43	2 914 976.07
L38	107 562.89	2 914 952.24	R38	107 170.02	2 914 664.22
L39	107 584.71	2 914 940.09	R39	107 002.69	2 914 519.99
L40	107 564.18	2 914 922.09	R40	106 905.49	2 914 436.21
L41	107 542.36	2 914 934.29	R41	106 807.15	2 914 353.06
L42	107 531.22	2 914 923.61	R42	106 528.53	2 914 113.81
L43	107 159.52	2 914 603.88	R43	106 266.33	2 913 887.75
L44	107 012.39	2 914 477.47	R44	106 097.63	2 913 742.81
L45	106 544.97	2 914 076.00	R45	105 917.10	2 913 587.25
L46	106 294.93	2 913 860.22	R46	105 422.18	2 913 161.87
L47	106 148.53	2 913 733.15	R47	105 165.06	2 912 940.63
L48	106 121.15	2 913 690.23	R48	104 744.75	2 912 579.18
L49	106 100.87	2 913 673.58	R49	104 612.81	2 912 469.92
L50	106 060.21	2 913 657.91	R50	104 595.02	2 912 451.43
L51	105 933.73	2 913 549.28	R51	104 578.79	2 912 437.97

Vel	7	Van	10	P914/16
Sheet		of		

PADRESERWE KOÖRDINATE / ROAD RESERVE CO-ORDINATES						
LINKERKANT/LEFT HAND SIDE				REGTERKANT/RIGHT HAND SIDE		
	Y	X	WG 27°		Y	X
L52	105 437.13	2 913 122.37		R52	104 491.62	2 912 370.35
L53	105 177.86	2 912 899.10		R53	104 411.43	2 912 313.06
L54	104 900.46	2 912 661.28		R54	103 876.09	2 911 981.69
L55	104 770.29	2 912 548.87		R55	103 079.54	2 911 489.18
L56	104 622.13	2 912 428.51		R56	102 789.26	2 911 309.94
L57	104 598.82	2 912 413.97		R57	102 630.13	2 911 210.12
L58	104 459.50	2 912 307.71		R58	102 404.72	2 911 049.45
L59	103 882.82	2 911 951.03		R59	102 218.44	2 910 841.17
L60	103 085.48	2 911 457.96		R60	101 769.03	2 910 336.51
L61	102 806.03	2 911 285.41		R61	101 754.71	2 910 319.80
L62	102 646.44	2 911 186.51		R62	101 711.93	2 910 268.52
L63	102 424.64	2 911 025.26		R63	101 582.17	2 910 125.06
L64	102 223.84	2 910 799.53		R64	101 443.65	2 909 979.77
L65	101 758.43	2 910 276.13		R65	101 335.04	2 909 883.29
L66	101 454.63	2 909 940.64		R66	101 288.43	2 909 863.00
L67	101 079.35	2 909 630.37		R67	101 268.51	2 909 846.26
L68	100 868.41	2 909 456.31		R68	101 247.09	2 909 808.88
L69	100 612.53	2 909 244.33		R69	100 954.51	2 909 560.80
L70	100 305.70	2 908 988.81		R70	100 834.48	2 909 466.80
L71	99 730.53	2 908 510.83		R71	100 284.66	2 909 014.64
L72	99 710.65	2 908 495.03		R72	99 762.96	2 908 580.44
L73	99 600.63	2 908 404.28		R73	99 375.29	2 908 258.82
L74	99 383.40	2 908 227.73		R74	99 315.81	2 908 211.45
L75	99 270.54	2 908 136.10		R75	99 165.86	2 908 113.16
L76	99 176.93	2 908 076.64		R76	98 649.84	2 907 851.21
L77	98 881.13	2 907 928.35		R77	98 371.67	2 907 707.72
L78	98 389.32	2 907 684.27		R78	97 805.23	2 907 421.00
L79	98 220.61	2 907 599.31		R79	97 188.05	2 907 110.02
L80	97 818.40	2 907 393.27		R80	96 627.33	2 906 827.15
L81	97 101.51	2 907 028.91		R81	96 367.33	2 906 696.55
L82	96 542.56	2 906 747.82		R82	96 059.84	2 906 426.70
L83	96 210.20	2 906 515.93		R83	95 672.84	2 906 087.15
L84	96 089.98	2 906 412.22		R84	95 365.04	2 905 817.42
L85	96 073.82	2 906 396.33		R85	95 038.63	2 905 533.50
L86	95 686.96	2 906 056.32		R86	94 843.51	2 905 371.57
L87	95 683.88	2 906 053.51		R87	94 772.23	2 905 329.32
L88	95 685.76	2 906 049.46		R88	94 725.40	2 905 301.56
L89	95 381.42	2 905 782.35		R89	94 676.22	2 905 281.41
L90	95 056.95	2 905 497.62		R90	94 553.29	2 905 231.07
L91	94 867.91	2 905 340.01		R91	94 507.85	2 905 212.56
L92	94 784.48	2 905 290.16		R92	94 195.93	2 905 092.85
L93	94 746.43	2 905 267.63		R93	93 788.84	2 904 936.00
L94	94 685.89	2 905 243.08		R94	93 628.19	2 904 873.88
L95	94 559.66	2 905 191.90		R95	93 555.36	2 904 845.72
L96	94 512.64	2 905 172.84		R96	93 297.72	2 904 752.20
L97	94 467.05	2 905 154.35		R97	93 248.21	2 904 734.79
L98	94 210.46	2 905 055.53		R98	93 090.50	2 904 684.86
L99	93 807.19	2 904 900.55		R99	92 896.15	2 904 635.67
L100	93 485.08	2 904 776.54		R100	92 725.23	2 904 598.53
L101	93 475.49	2 904 772.87		R101	92 441.75	2 904 539.50
L102	93 316.39	2 904 716.03		R102	92 302.90	2 904 500.99

Vel	8	Van	10	P914/16
Sheet		of		

PADRESERWE KOÖRDINATE / ROAD RESERVE CO-ORDINATES					
LINKERKANT/LEFT HAND SIDE			REGTERKANT/RIGHT HAND SIDE		
	Y	X	WG 27°	Y	X
L103	93 267.00	2 904 698.40		R103	92 206.81 2 904 467.56
L104	93 076.69	2 904 642.24		R104	92 161.89 2 904 450.20
L105	92 938.20	2 904 604.18		R105	92 118.01 2 904 448.28
L106	92 743.67	2 904 562.84		R106	92 087.67 2 904 433.99
L107	92 452.14	2 904 501.02		R107	92 057.31 2 904 408.73
L108	92 317.85	2 904 463.83		R108	91 918.76 2 904 333.19
L109	92 168.61	2 904 409.91		R109	91 846.30 2 904 287.36
L110	92 094.42	2 904 378.09		R110	91 776.92 2 904 243.54
L111	92 084.53	2 904 373.85		R111	91 727.04 2 904 209.21
L112	91 922.14	2 904 287.72		R112	91 678.98 2 904 172.99
L113	91 870.63	2 904 257.74		R113	91 400.54 2 903 960.38
L114	91 778.37	2 904 199.79		R114	91 111.05 2 903 737.59
L115	91 771.90	2 904 194.79		R115	91 002.82 2 903 655.23
L116	91 134.18	2 903 706.29		R116	90 621.23 2 903 364.17
L117	90 882.14	2 903 512.52		R117	90 504.87 2 903 281.91
L118	90 644.03	2 903 331.01		R118	89 950.54 2 902 913.21
L119	90 518.06	2 903 242.88		R119	89 672.65 2 902 728.01
L120	89 966.86	2 902 876.29		R120	89 517.40 2 902 619.99
L121	89 696.04	2 902 695.51		R121	88 929.15 2 902 200.45
L122	89 535.60	2 902 583.27		R122	88 341.15 2 901 780.49
L123	88 663.77	2 901 963.15		R123	88 333.47 2 901 774.54
L124	88 405.79	2 901 779.63		R124	88 223.51 2 901 683.14
L125	88 250.36	2 901 653.87		R125	88 087.92 2 901 553.14
L126	88 166.36	2 901 575.71		R126	88 001.07 2 901 453.63
L127	88 100.98	2 901 509.03		R127	87 920.78 2 901 352.68
L128	88 083.00	2 901 489.02		R128	87 910.39 2 901 342.13
L129	88 028.47	2 901 427.53		R129	87 886.36 2 901 309.44
L130	87 944.05	2 901 321.42		R130	87 869.92 2 901 288.94
L131	87 848.74	2 901 191.14		R131	87 601.36 2 900 925.15
L132	87 651.82	2 900 926.09		R132	87 322.98 2 900 548.49
L133	87 467.59	2 900 676.68		R133	87 273.94 2 900 476.20
L134	87 448.80	2 900 653.38		R134	87 201.56 2 900 369.17
L135	87 394.17	2 900 579.77		R135	86 831.05 2 899 803.35
L136	87 249.30	2 900 369.06		R136	86 811.47 2 899 766.61
L137	86 571.88	2 899 340.28		R137	86 517.47 2 899 317.91
L138	86 468.83	2 899 185.91		R138	86 414.24 2 899 174.95
L139	86 440.89	2 899 143.54		R139	86 051.96 2 898 694.91
L140	86 081.89	2 898 671.38		R140	85 714.58 2 898 249.98
L141	85 721.12	2 898 193.96		R141	85 669.68 2 898 178.57
L142	85 703.97	2 898 172.38		R142	85 656.96 2 898 158.31
L143	85 493.16	2 897 787.18		R143	85 475.82 2 897 827.98
L144	85 465.98	2 897 737.61		R144	85 428.32 2 897 734.69
L145	85 441.98	2 897 691.91		R145	85 368.79 2 897 614.44
L146	85 421.79	2 897 647.31		R146	85 349.23 2 897 576.75
L147	85 387.58	2 897 558.38		R147	85 333.58 2 897 503.55
L148	85 352.30	2 897 427.45		R148	85 293.55 2 897 299.87
L149	85 305.94	2 897 186.71		R149	85 281.34 2 897 237.72
L150	85 264.01	2 896 971.89		R150	85 258.91 2 897 168.35
L151	85 295.77	2 896 973.12		R151	85 263.11 2 897 169.99
L152	85 289.87	2 896 942.88		R152	85 090.21 2 896 270.51
L153	85 258.09	2 896 941.65		R153	85 082.75 2 896 239.10

Vel	9	Van	10	P914/16
Sheet		of		