
GOVERNMENT NOTICES • GOEWERMENTSKENNISGEWINGS

DEPARTMENT OF TRANSPORT**NO. 1107****13 OCTOBER 2017****DECLARATION AMENDMENT OF NATIONAL ROAD N1 SECTION 29X**

AMENDMENT OF DECLARATION No. 1322 OF 1989.

- i) By virtue of section 40(1)(b) of The South African National Roads Agency Limited and National Roads Act, 1998 (Act No. 7 of 1998), I hereby amend Declaration No. 1322 of 1989 by substituting paragraph 16 of the Annexure, being the section of the descriptive declaration of the route from Louis Trichardt up to Beit Bridge Border Post, with the accompanying sheets 1 to 39 of Plan No. P912/16.
- ii) By virtue of Section 40(1)(a) of The South African National Roads Agency Limited and National Roads Act, 1998 (Act No. 7 of 1998), I hereby declare the operational roads and parking areas within the Beit bridge Border Post from where it joins the existing National Road at points L479 and R503 up to the South Africa / Zimbabwe International Border as indicated on sheet 27 of Plan P912/16, as a National Road.

(National Road N1 Section 29X: Louis Trichardt – South Africa / Zimbabwe International Border)

MINISTER OF TRANSPORT

VERKLARING WYSIGING VAN NASIONALE PAD N1 SEKSIE 29X

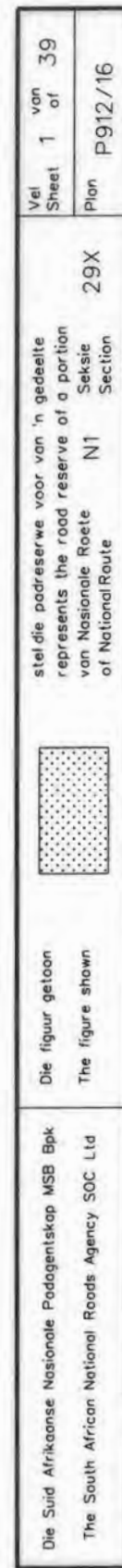
WYSIGING VAN VERKLARING No. 1322 VAN 1989.

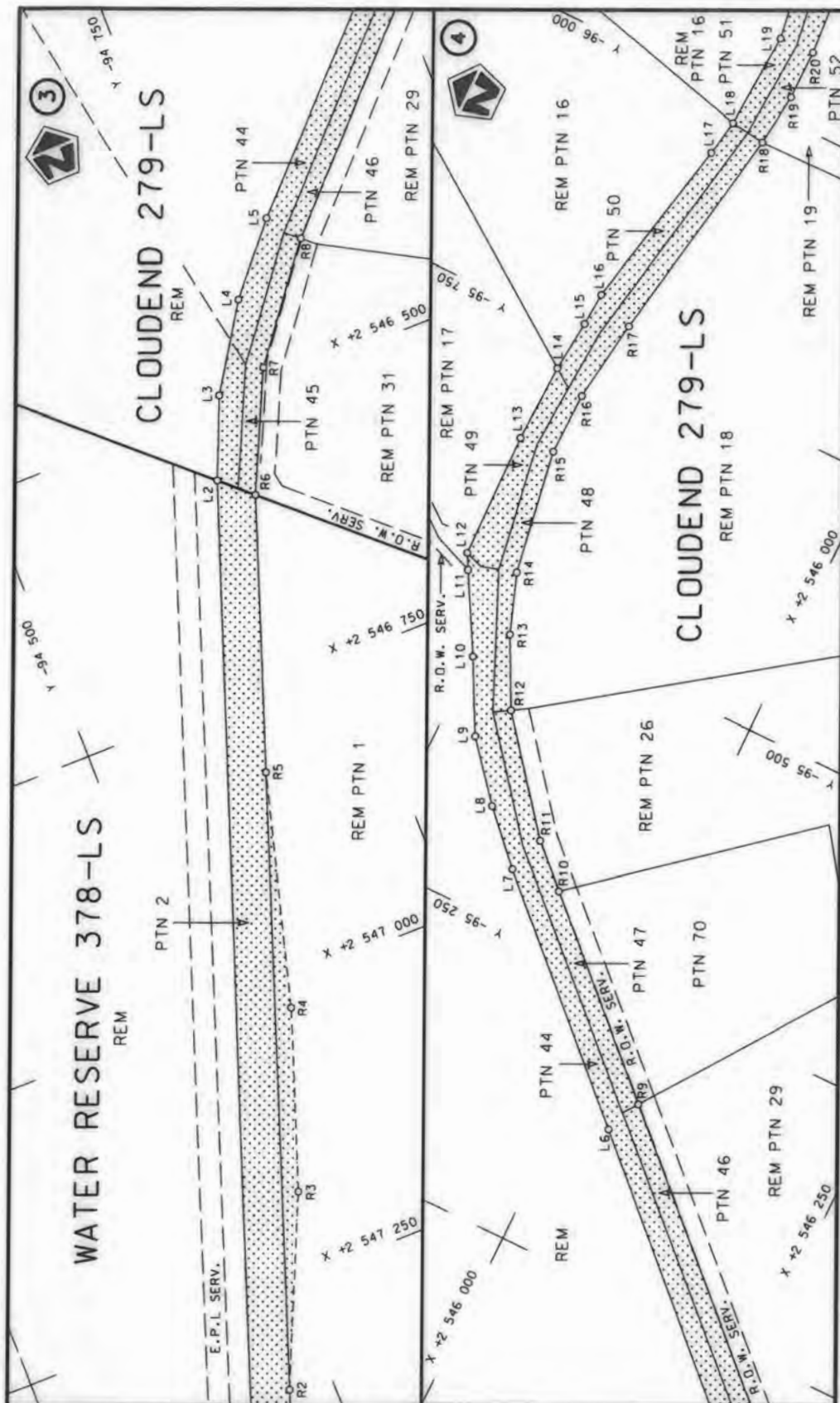
- i) Kragtens Artikel 40(1)(b) van die Wet op die Suid-Afrikaanse Nasionale Padagentskap Beperk en op Nasionale Paaie, 1998 (Wet No. 7 van 1998), wysig ek hiermee Verklaring No. 1322 van 1989 deur paragraaf 16 van die Bylaag te vervang, synde die gedeelte van die beskrywende verklaring van die pad vanaf Louis Trichardt tot by Beitbrug, met bygaande velle 1 tot 39 van Plan No. P912/16.
- ii) Kragtens Artikel 40(1)(a) van die Wet op die Suid-Afrikaanse Nasionale Padagentskap Beperk en op Nasionale Paaie, Wet 1998 (Wet No. 7 van 1998), verklaar ek hiermee die operasionele paaie en parkeer areas binne die Beitbrug Grenspos area van waar dit aansluit by die bestaande Nasionale Pad by punte L479 en R503 tot by die Suid Afrika / Zimbabwe Internasionale Grens soos aangetoon op meegaande Vel 27 van Plan P912/16, as 'n Nasionale Pad.


(Nasionale Pad N1 Seksie 29X: Louis Trichardt – Suid Afrika / Zimbabwe Internasionale Grens)

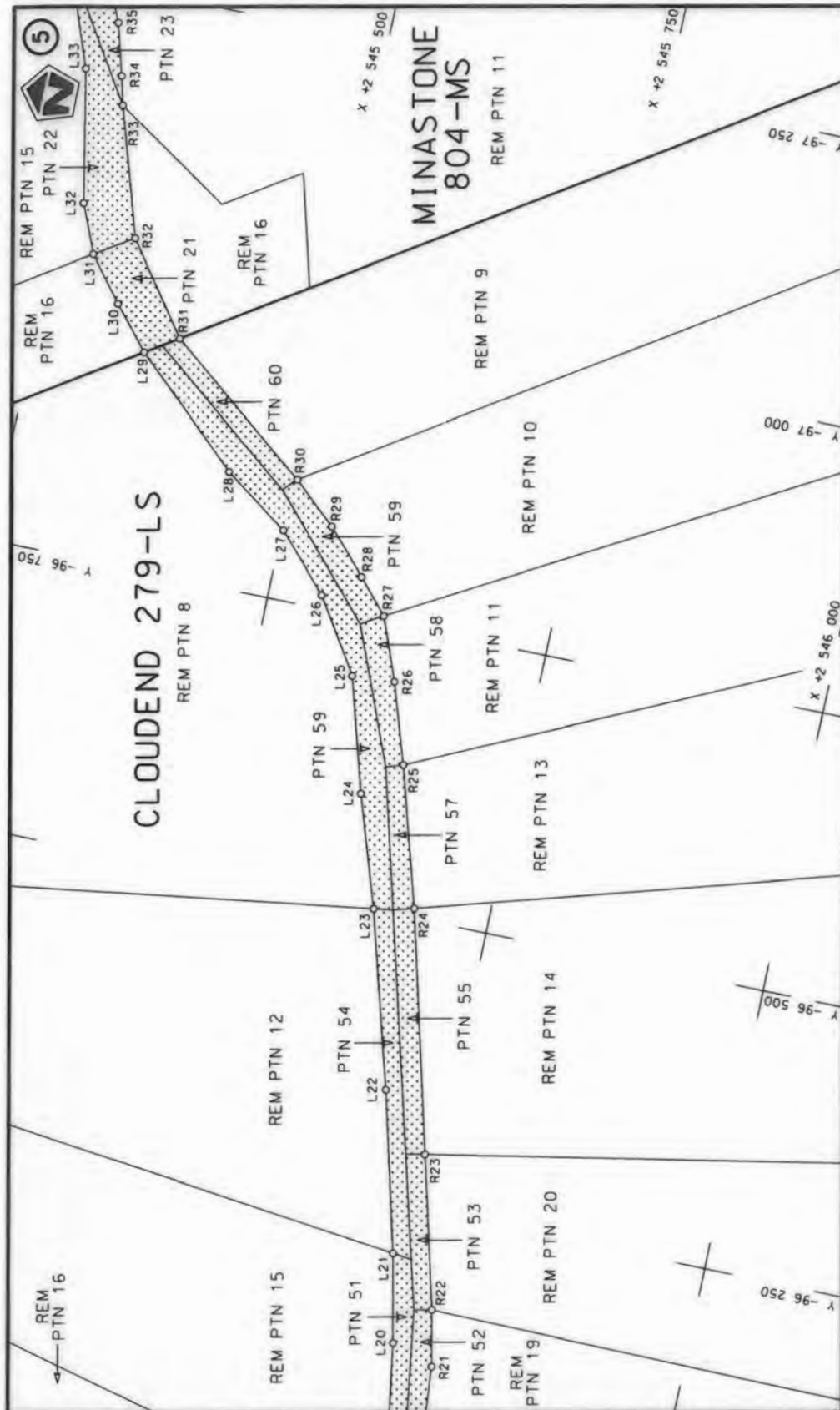



MINISTER VAN VERVOER

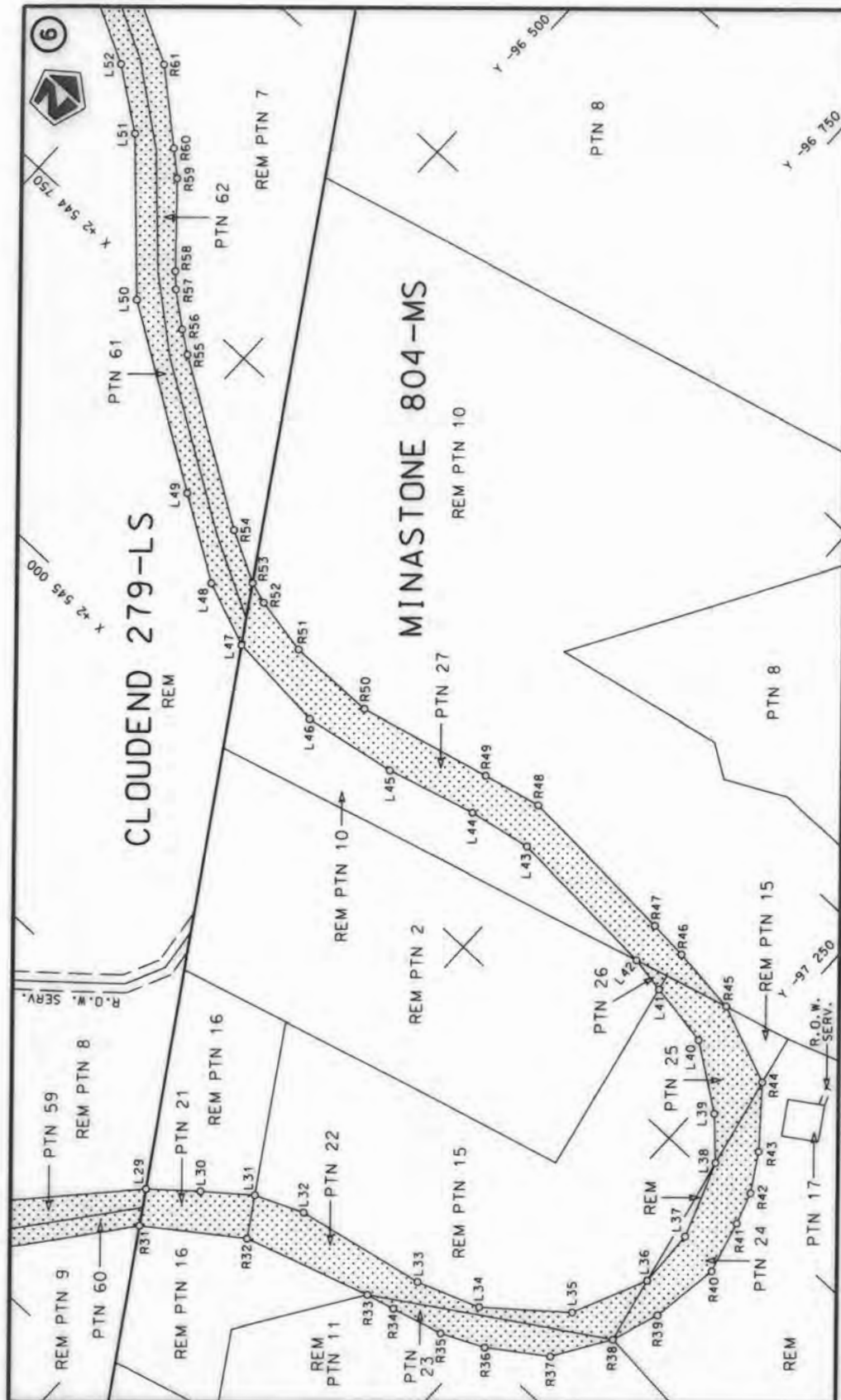





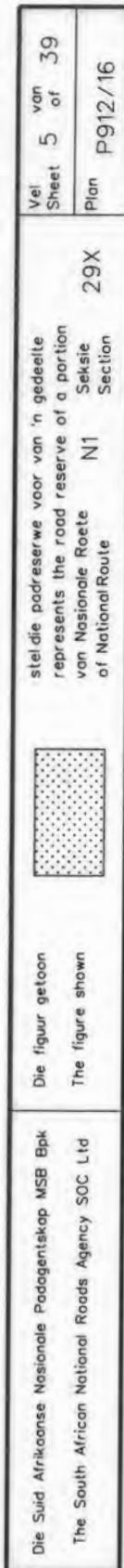
Die Suid Afrikaanse Nasionale Padogenitskap MSB Bpk	<p>Die figuur getoon</p>  <p>The figure shown</p>	<p>stelt die padreserwe voor van 'n gedeelte represents the road reserve of a portion van Nasionale Roete N1 of National Route</p>	Vel Sheet 2 of 39
The South African National Roads Agency SOC Ltd			Plan 29X p912/16

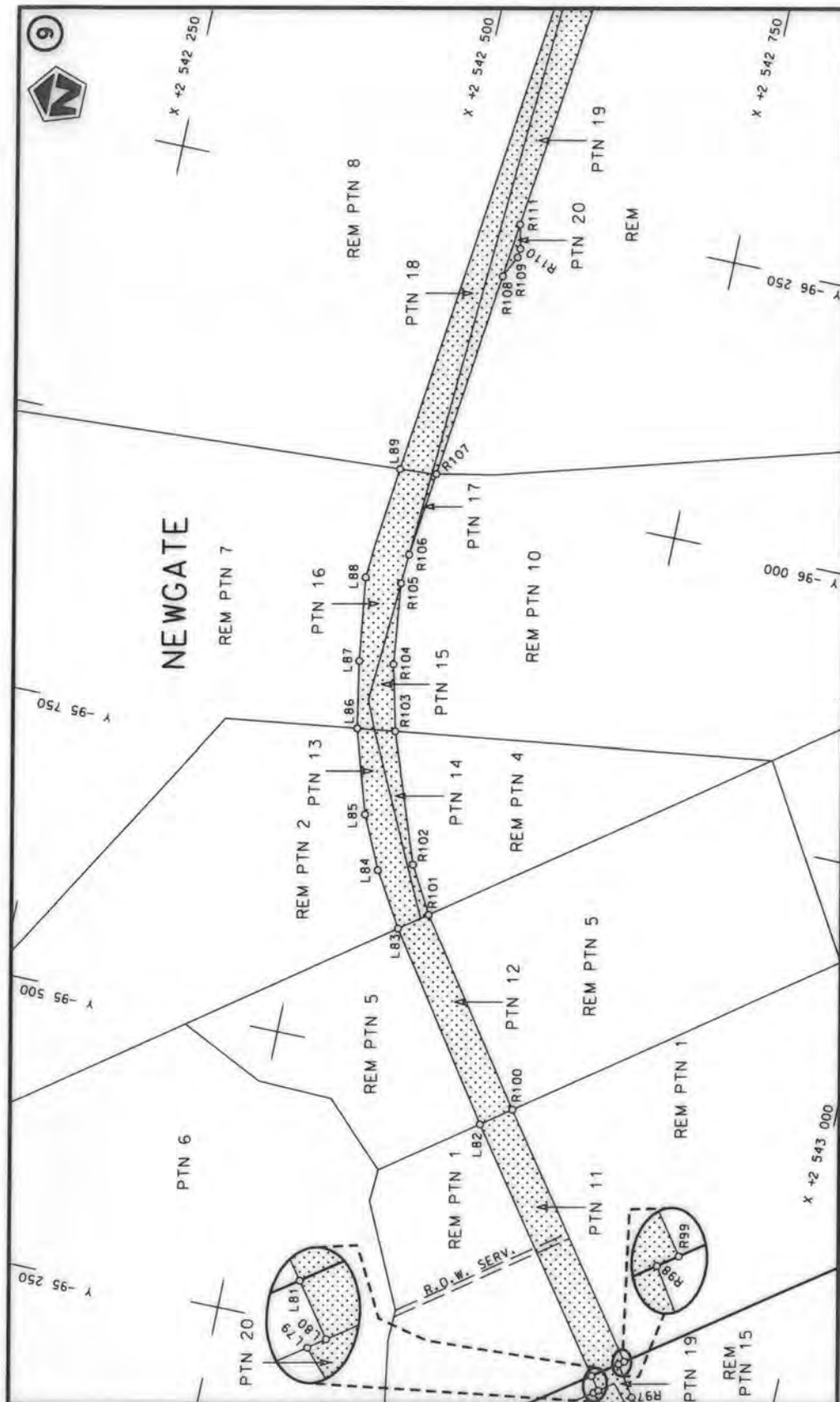


Die Suid Afrikaanse Nasionale Padagentskap MSB Bpk The South African National Roads Agency SOC Ltd	Die figuur getoon The figure shown		stel die padreserwe voor van 'n gedeelte represents the road reserve of a portion van Nasionale Roete N1 of National Route Section	29X	Vel Sheet 3 of 39	Plan P912/16
---	---------------------------------------	---	---	-----	----------------------	-----------------



Die Suid Afrikaanse Nasionale Padagentskap MSB Bpk The South African National Roads Agency SOC Ltd	Die figuur getoon The figure shown		stel die padreserwe voor van 'n gedeelte represents the road reserve of a portion van Nasionale Roete N1 of National Route	29X	Plan P912/16
Vel Sheet 4 of 39	Section N1	Section 29X	Section 29X	Section 29X	Section 29X





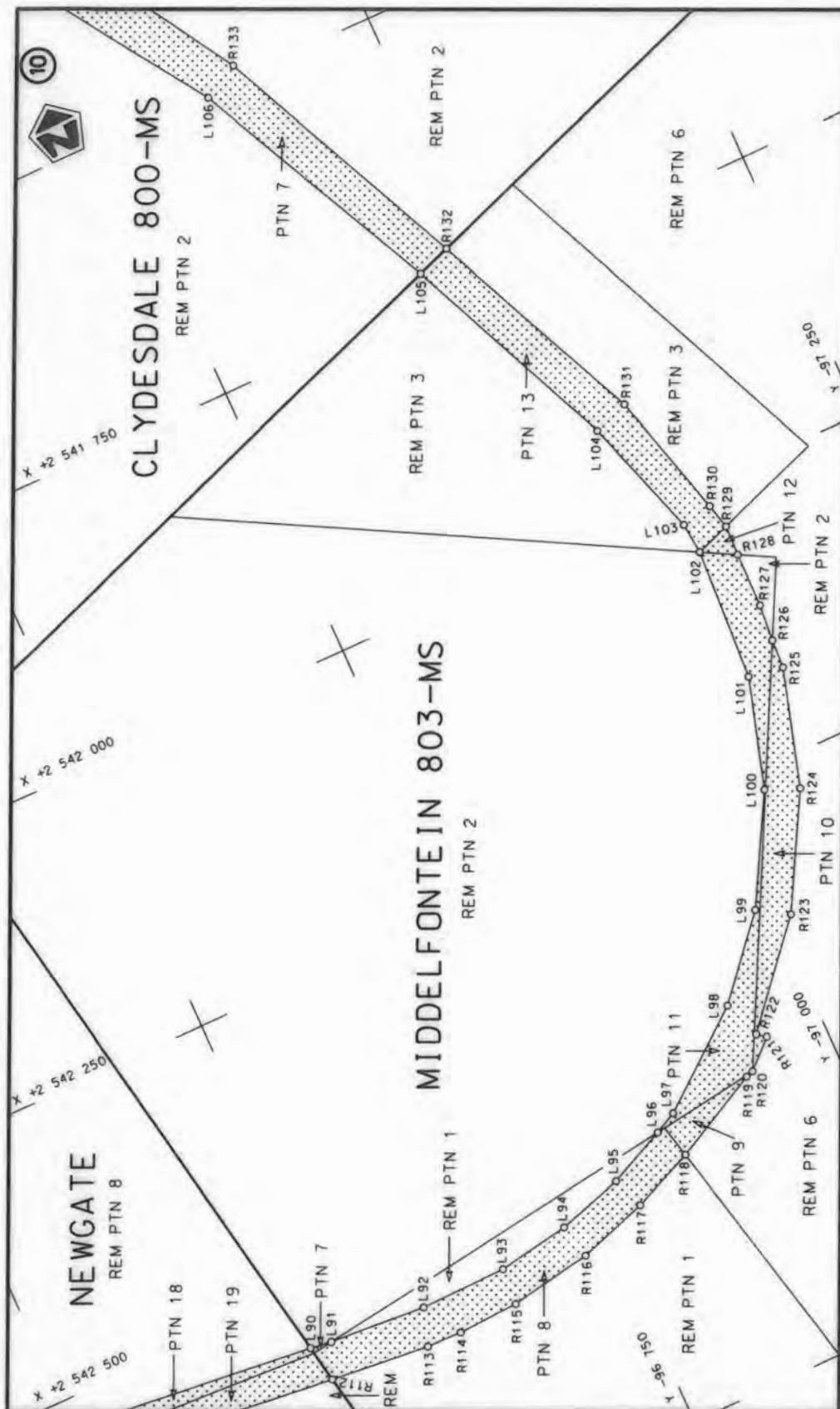
Die Suid Afrikaanse Nasionale Padagentskap MSB Bpk
The South African National Roads Agency SOC Ltd

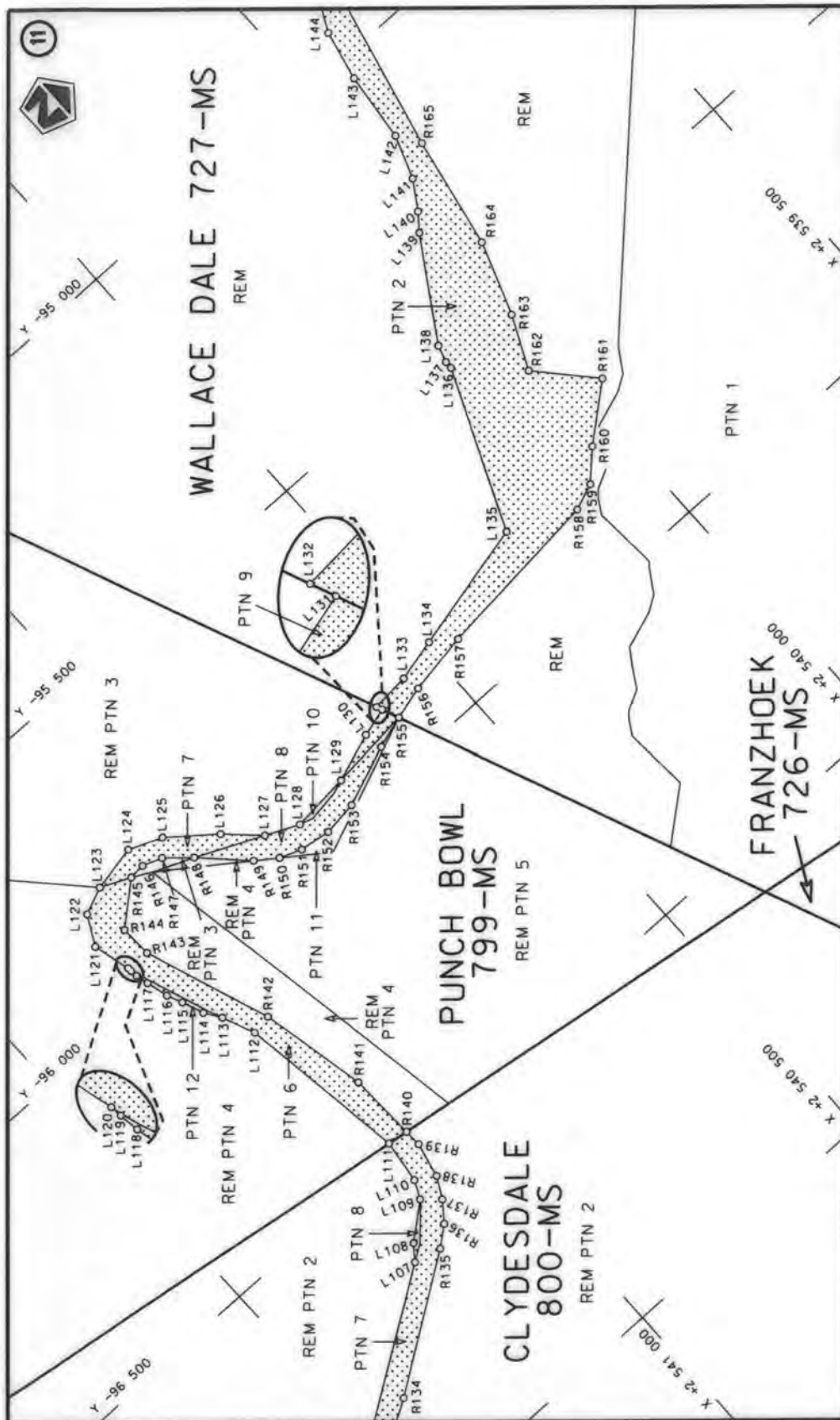
Die figuur getoon
The figure shown



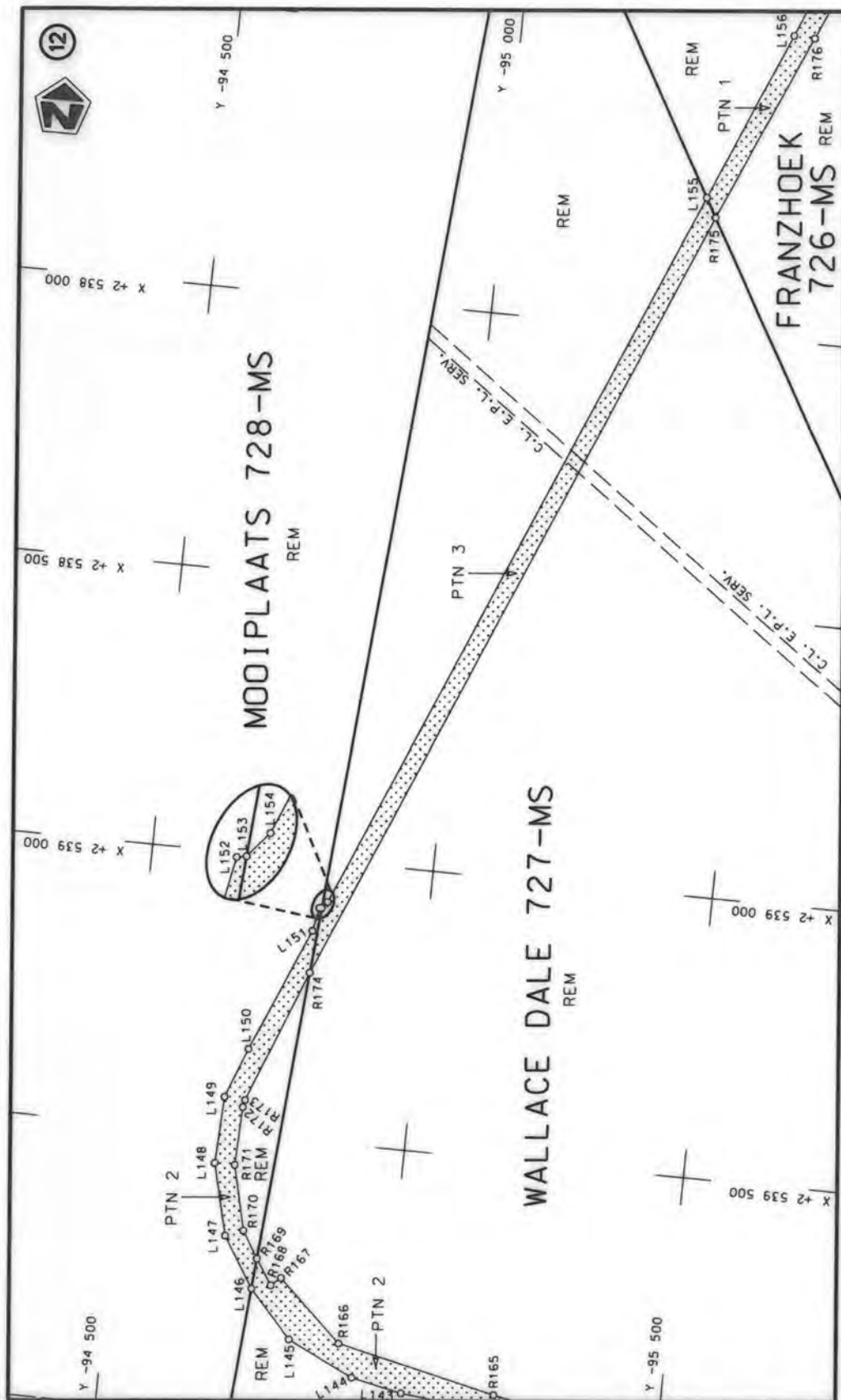
stelt die padreserwe voor van 'n gedeelte
represents the road reserve of a portion
van Nasionale Roete N1
of National Route N1

Vel
Sheet 6 of 39
Plan
P912/16





Die Suid Afrikaanse Nasionale Padagentskap MSB Bpk The South African National Roads Agency SOC Ltd	Die figuur getoon The figure shown	stel die padreserwe voor van 'n gedeelte represents the road reserve of a portion van Nasionale Roete N1 of National Route	Vel Sheet 8 of 39 Plan P912/16
---	---------------------------------------	---	--------------------------------------



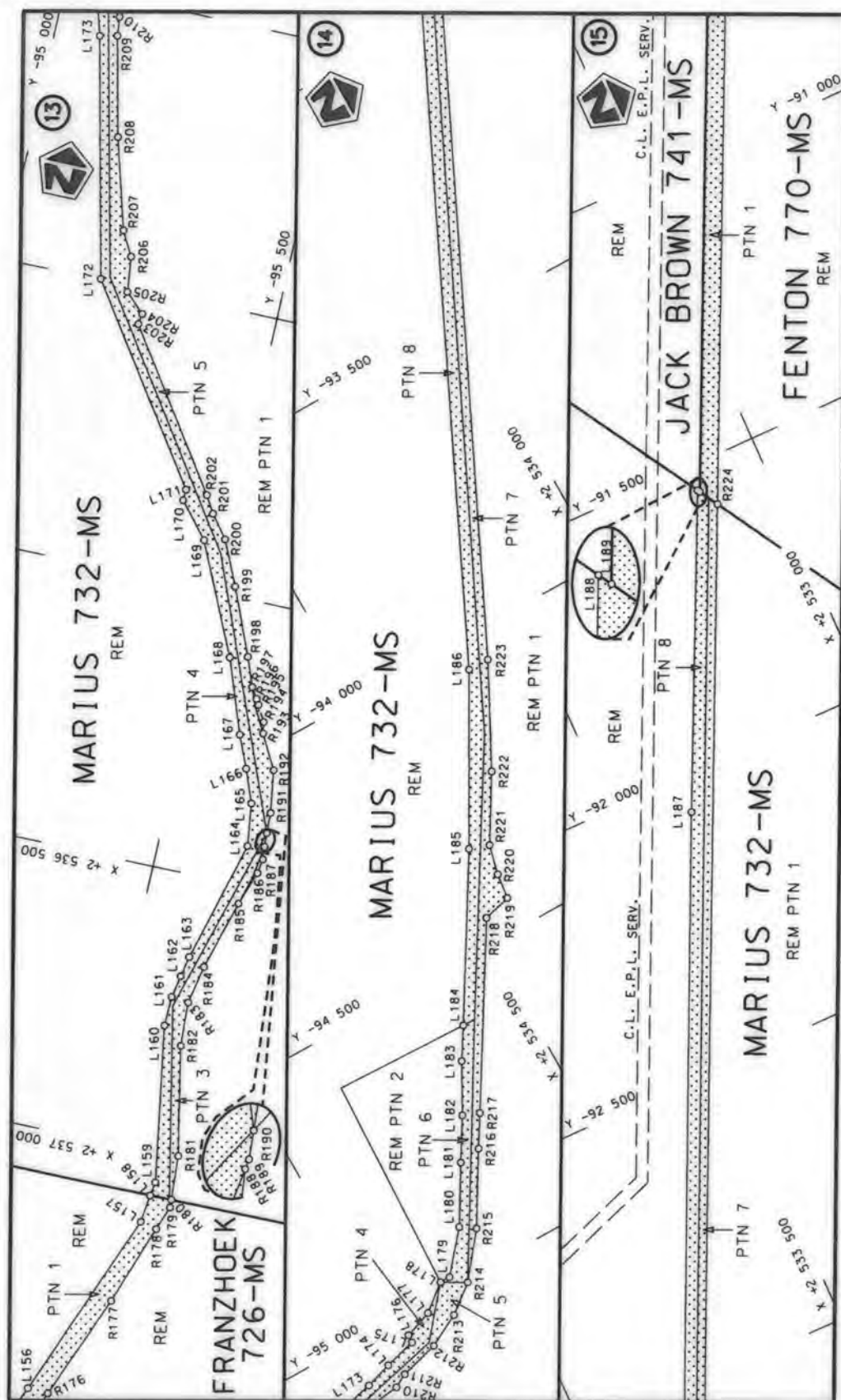
Die Suid Afrikaanse Nasionale Padagentskap MSB Bpk
The South African National Roads Agency SOC Ltd

Die figuur getoon
The figure shown



steldie padreserwe voor van 'n gedeelte
represents the road reserve of a portion
van Nasionale Roete N1 Sektie
of National Route Section

Vel
Sheet 9 of 39
Plan P912/16



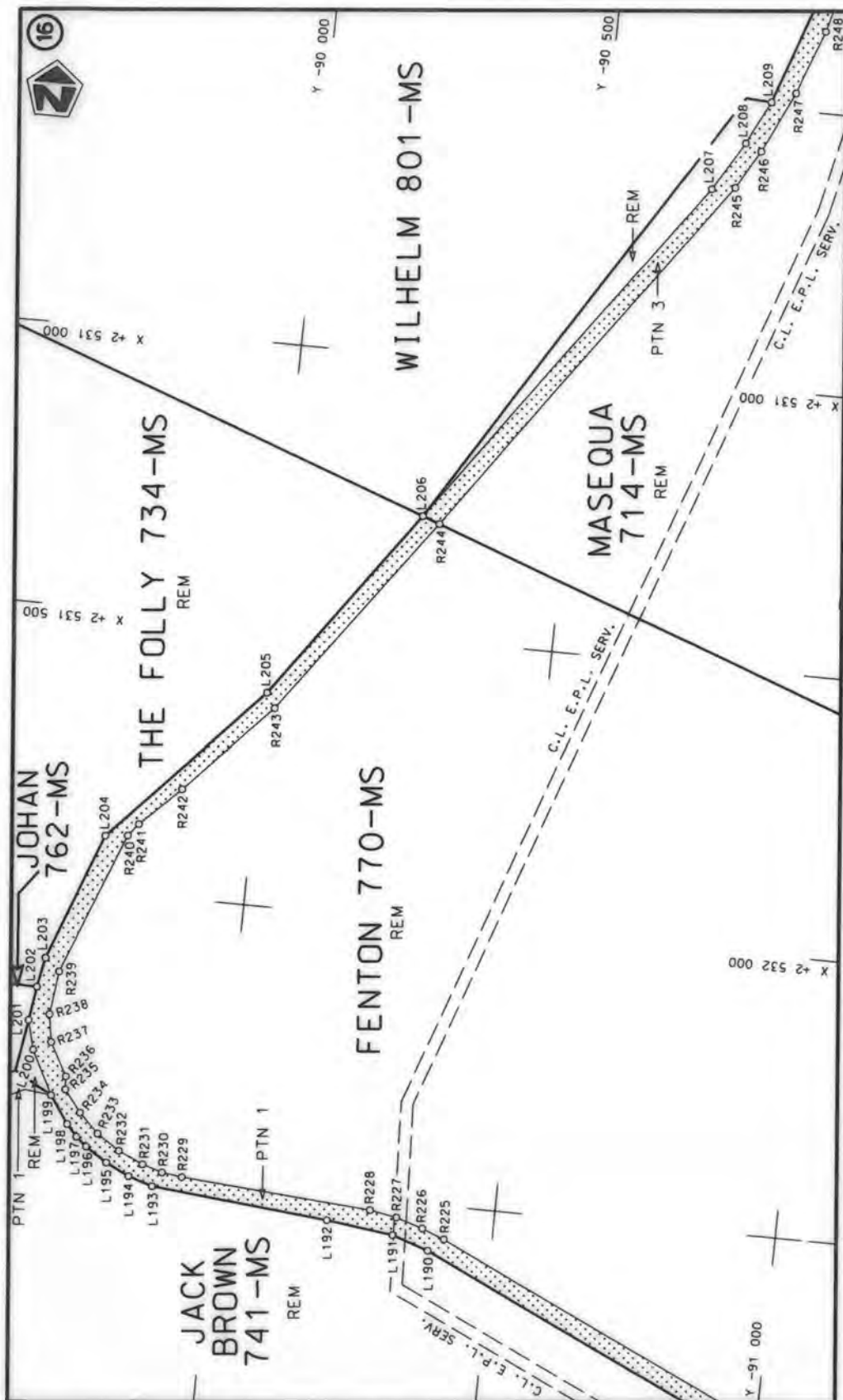
Die Suid Afrikaanse Nasionale Padagentskap MSB Bpk
The South African National Roads Agency SOC Ltd


Die figuur getoon
The figure shown

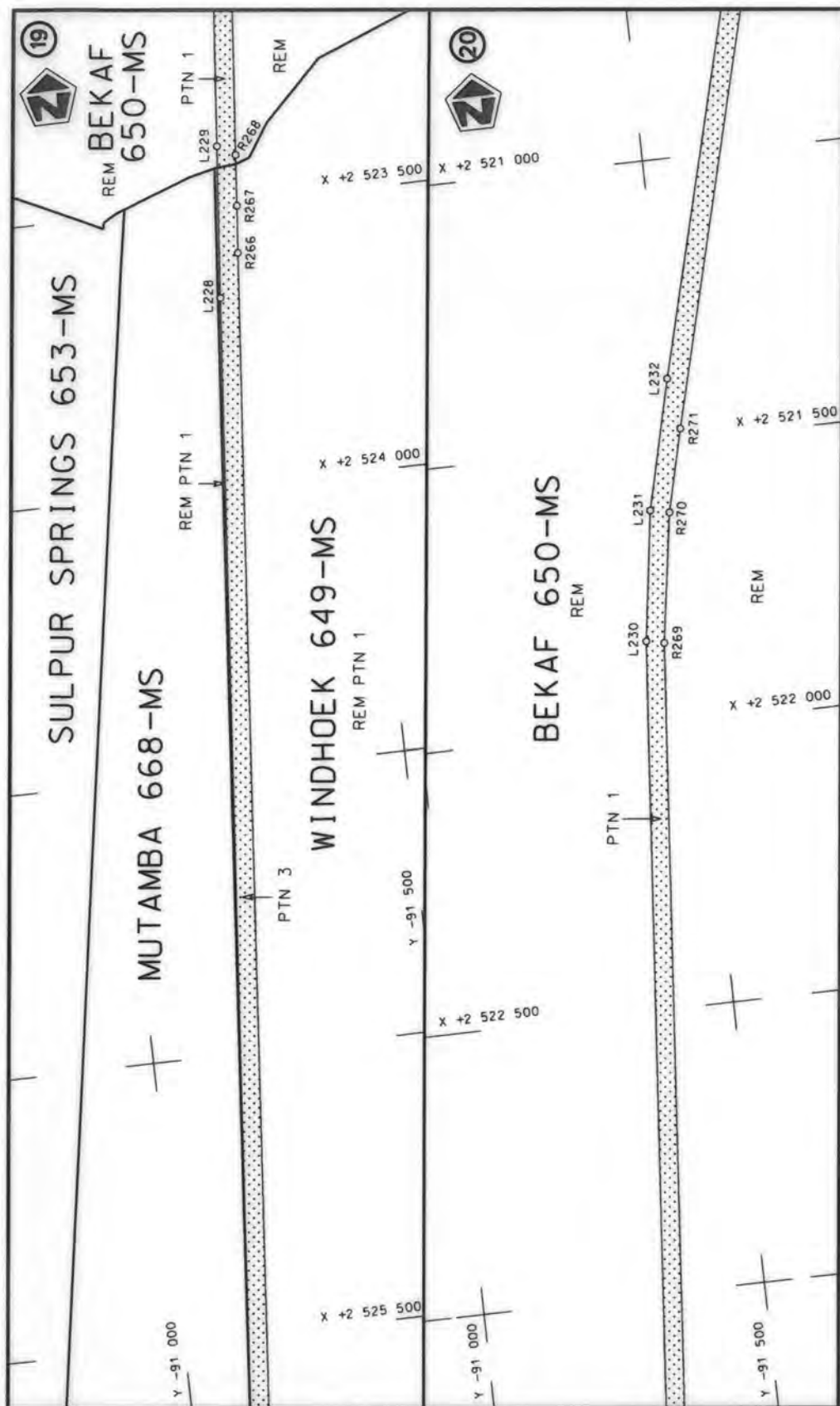


stel die padreserwe voor van 'n gedeelte
represents the road reserve of a portion
van Nasionale Roete N1 Seksie
of National Route N1 Section

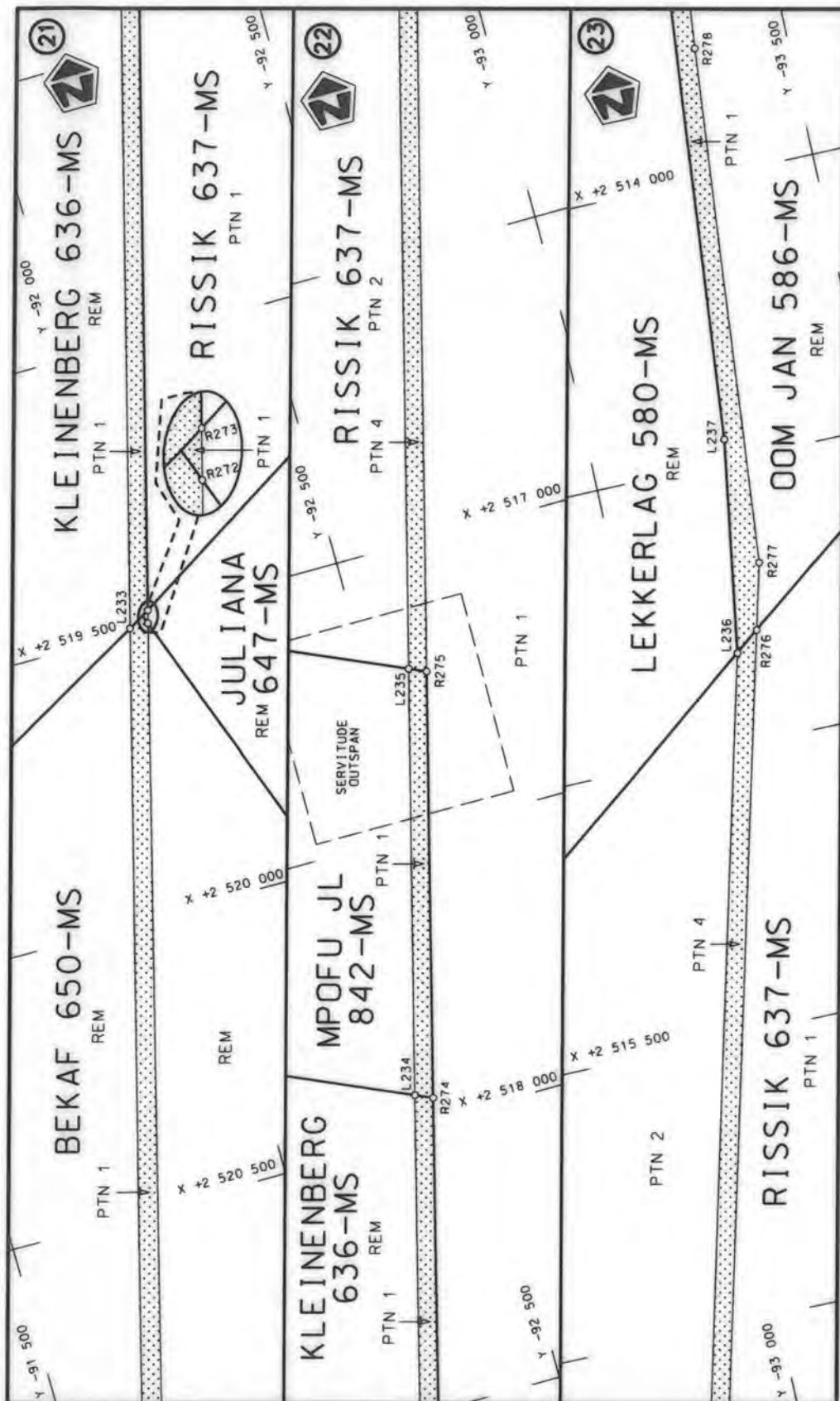
Vel
Sheet 10 of 39
Plan P912/16



Die Suid Afrikaanse Nasionale Padagentskap MSB Bpk The South African National Roads Agency SOC Ltd	Die figuur getoon The figure shown		stel die padreserwe voor van 'n gedeelte represents the road reserve of a portion van Nasionale Roete N1 of National Route	29X Sektie Section	Vel Sheet 11 of 39 Plan P912/16
---	---------------------------------------	---	---	--------------------------	---------------------------------------



Die Suid Afrikaanse Nasionale Padagentskap MSB Bpk The South African National Roads Agency SOC Ltd	Die figuur getoon The figure shown	stel die padreserwe voor van 'n gedeelte represents the road reserve of a portion van Nasionale Roete N1 of National Route	29X	Plan P912/16	Vel Sheet 13 of 39
---	---------------------------------------	---	-----	--------------	--------------------



Die Suid Afrikaanse Nasionale Padagentskap MSB Bpk
The South African National Roads Agency SOC Ltd

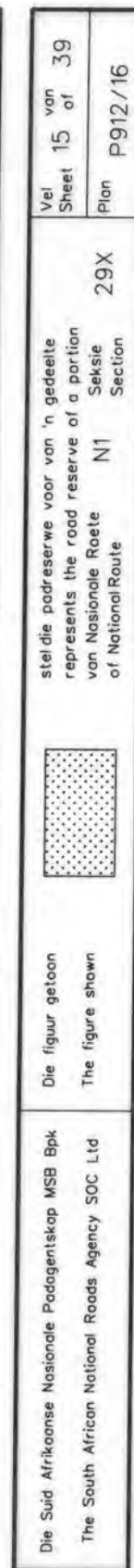
Die figuur getoon
The figure shown

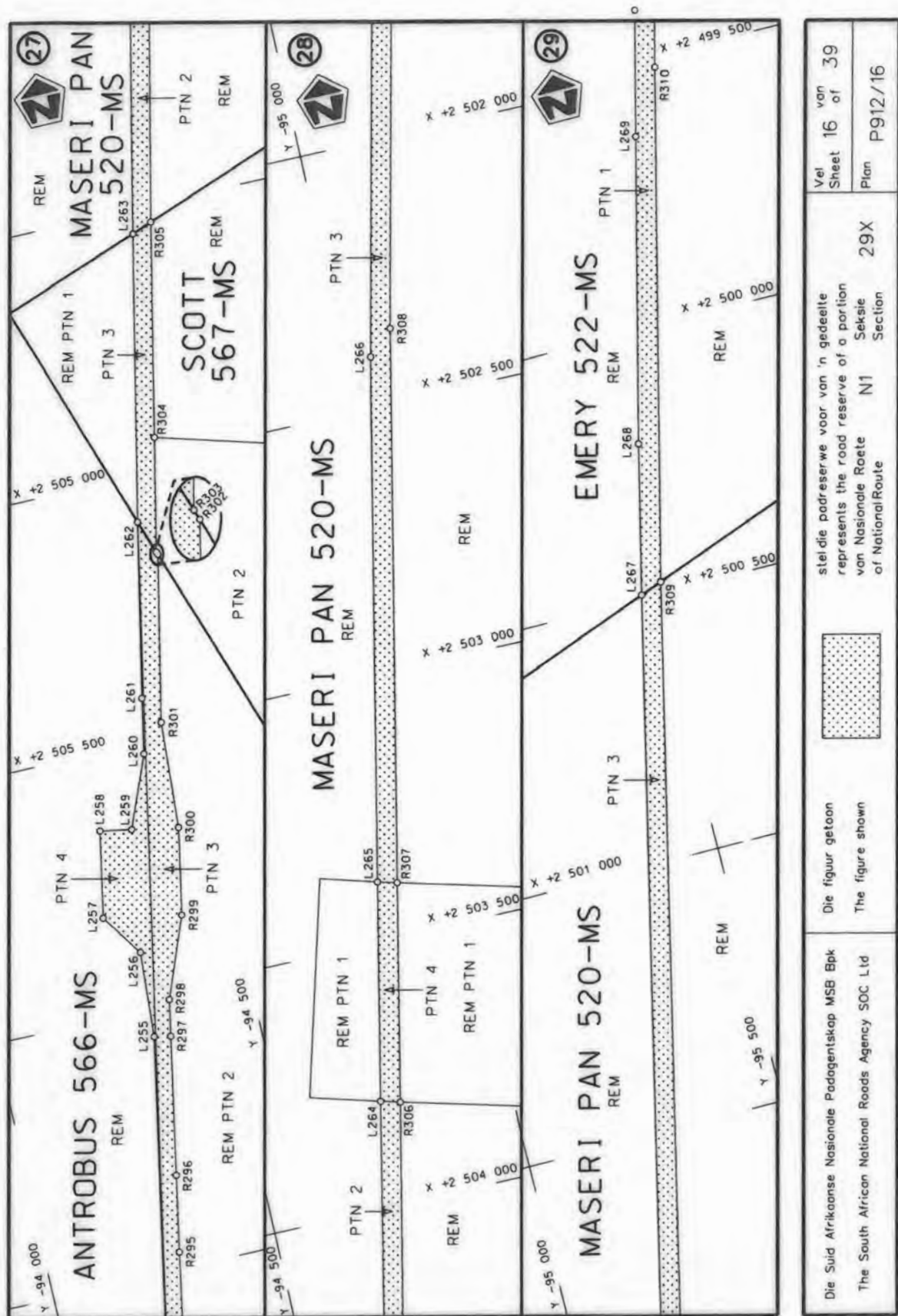


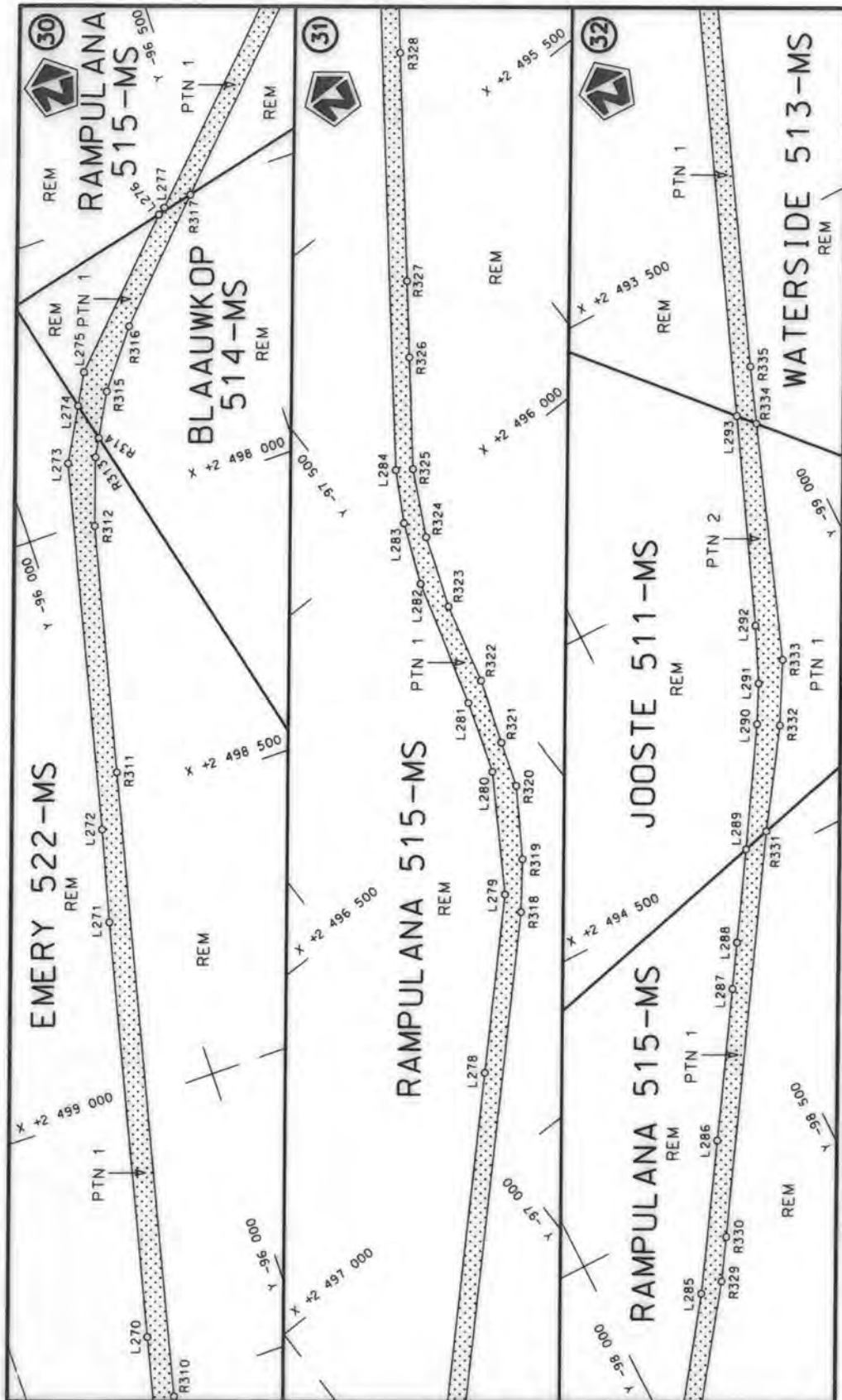
stel die padreserwe voor van 'n gedeelte
represents the road reserve of a portion
van Nasionale Roete N1
of National Route


29X

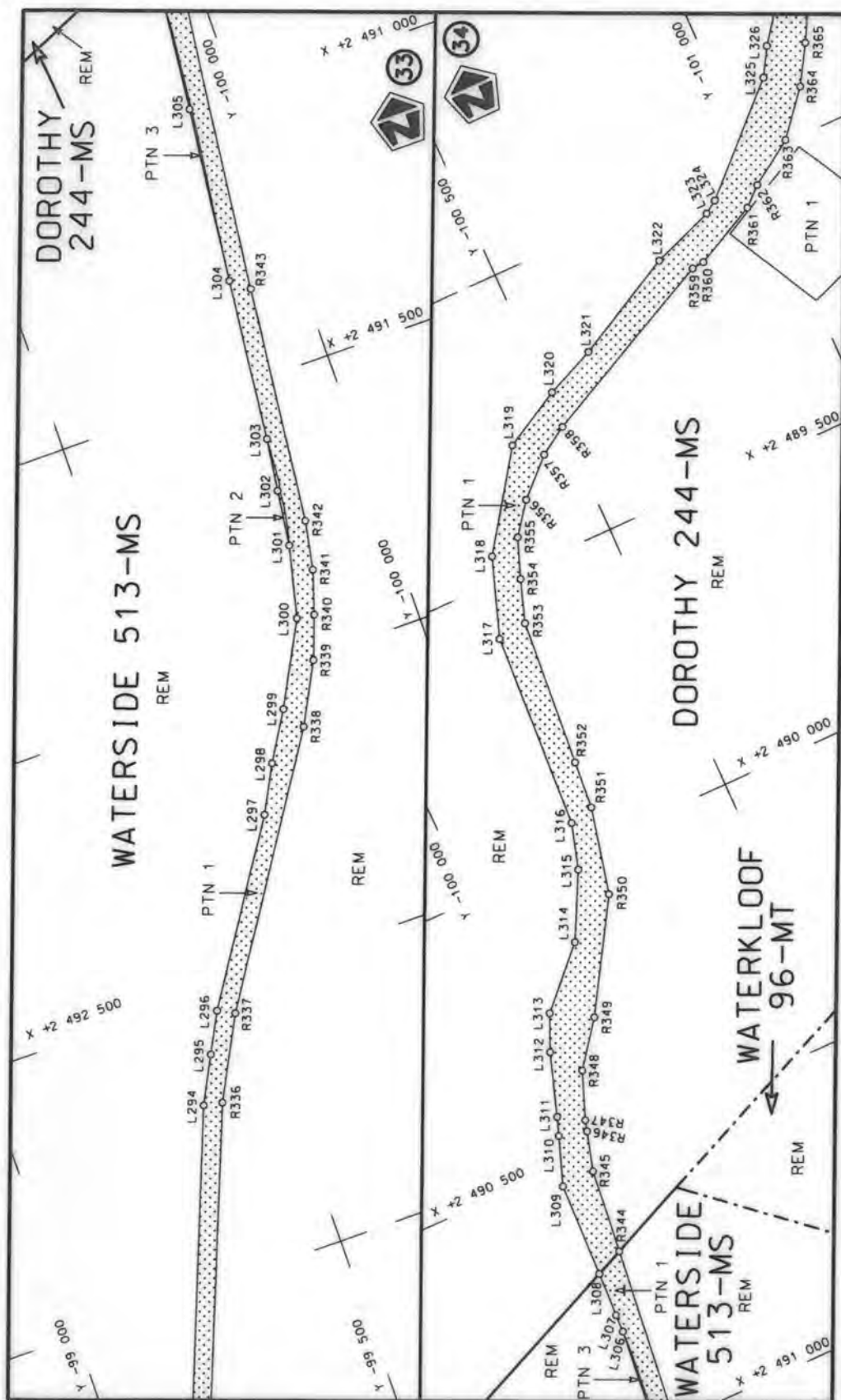
Vel
Sheet 14 of 39
Plan P912/16




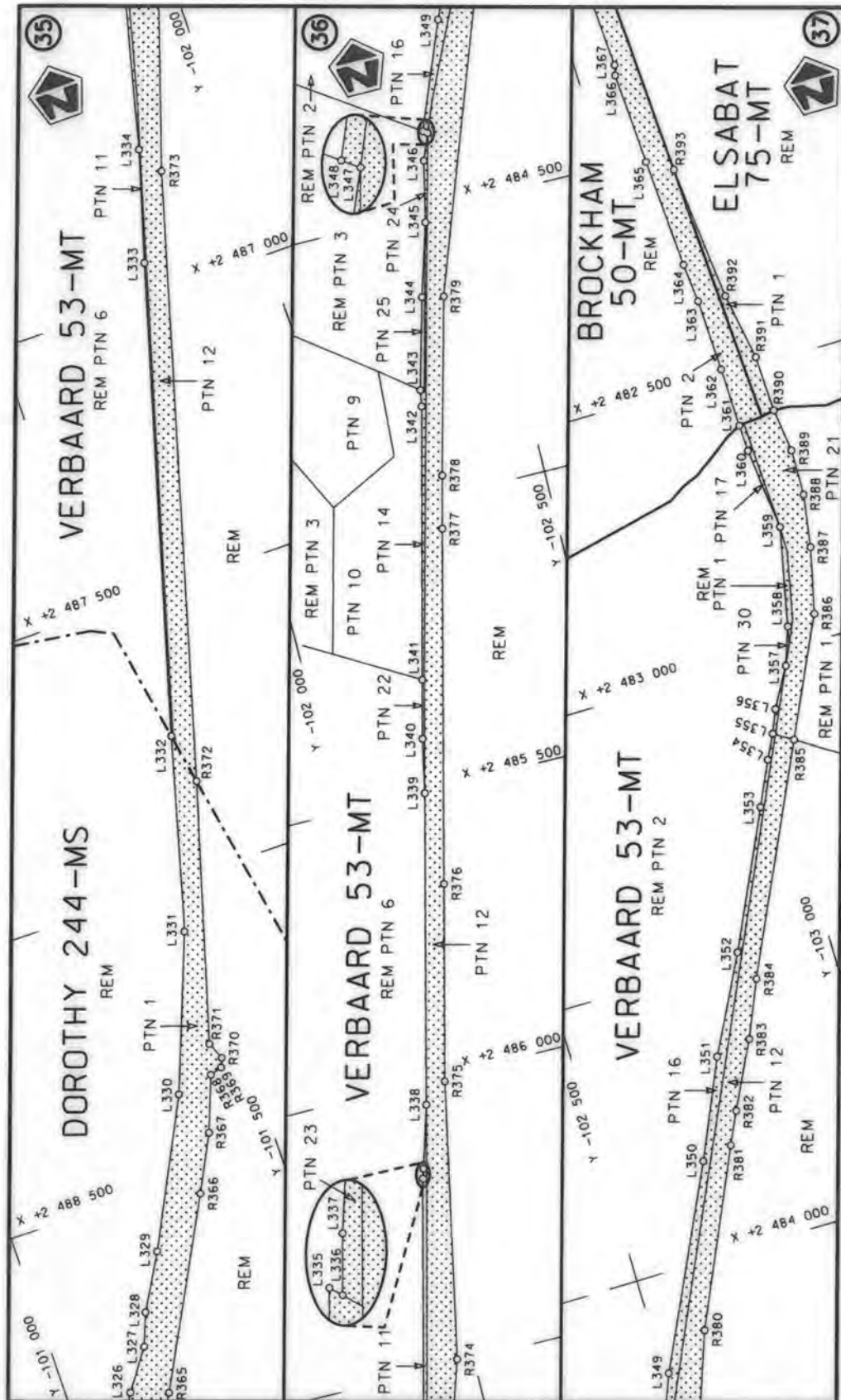




Die Suid Afrikaanse Nasionale Padagentskap MSB Bpk The South African National Roads Agency SOC Ltd	Die figuur getoon The figure shown		stel die padreserwe voor van 'n gedeelte represents the road reserve of a portion van Nasionale Roete N1 of National Route
Val 17 of 39 Sheet 17 of 39	Plan P912/16	29X	Section



Die Suid Afrikaanse Nasionale Padagentskap MSB Bpk The South African National Roads Agency SOC Ltd	Die figuur getoon The figure shown		steldie padreserwe voor van 'n gedeelte represents the road reserve of a portion van Nasionale Roete N1 of National Route
Vel Sheet 18 of 39 Plan p912/16	29X Seksie Section		



Die Suid Afrikaanse Nasionale Padagentskap MSB Bpk
The South African National Roads Agency SOC Ltd

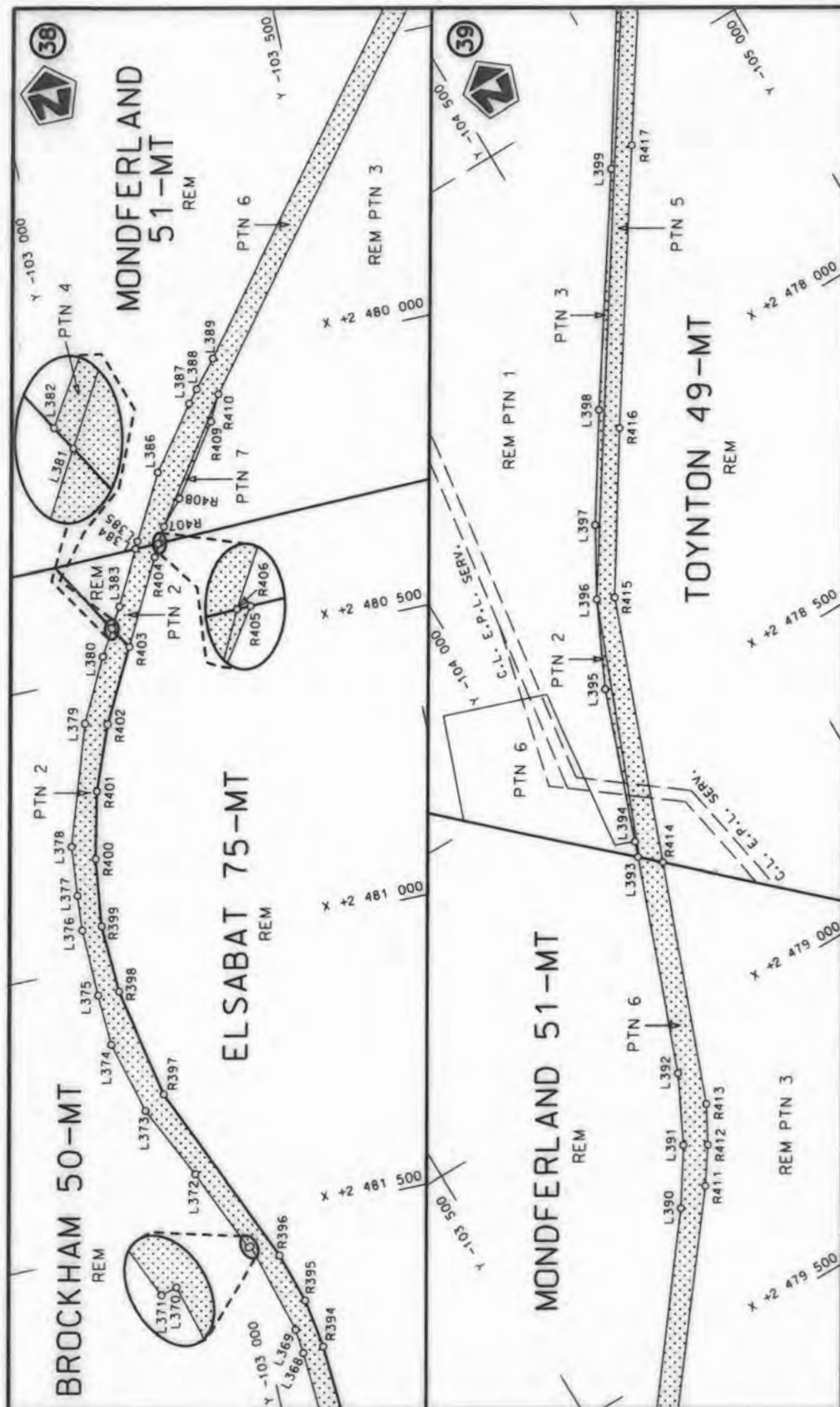
Die figuur getoon
The figure shown



stelt die padreserwe voor van 'n gedeelte
represents the road reserve of a portion
van Nasionale Roete N1
of National Route

Vel
Sheet 19 of 39

Plan
p912/16



Die Suid Afrikaanse Nasionale Padagentskap MSB Bpk
The South African National Roads Agency SOC Ltd

Die figuur getoon
The figure shown



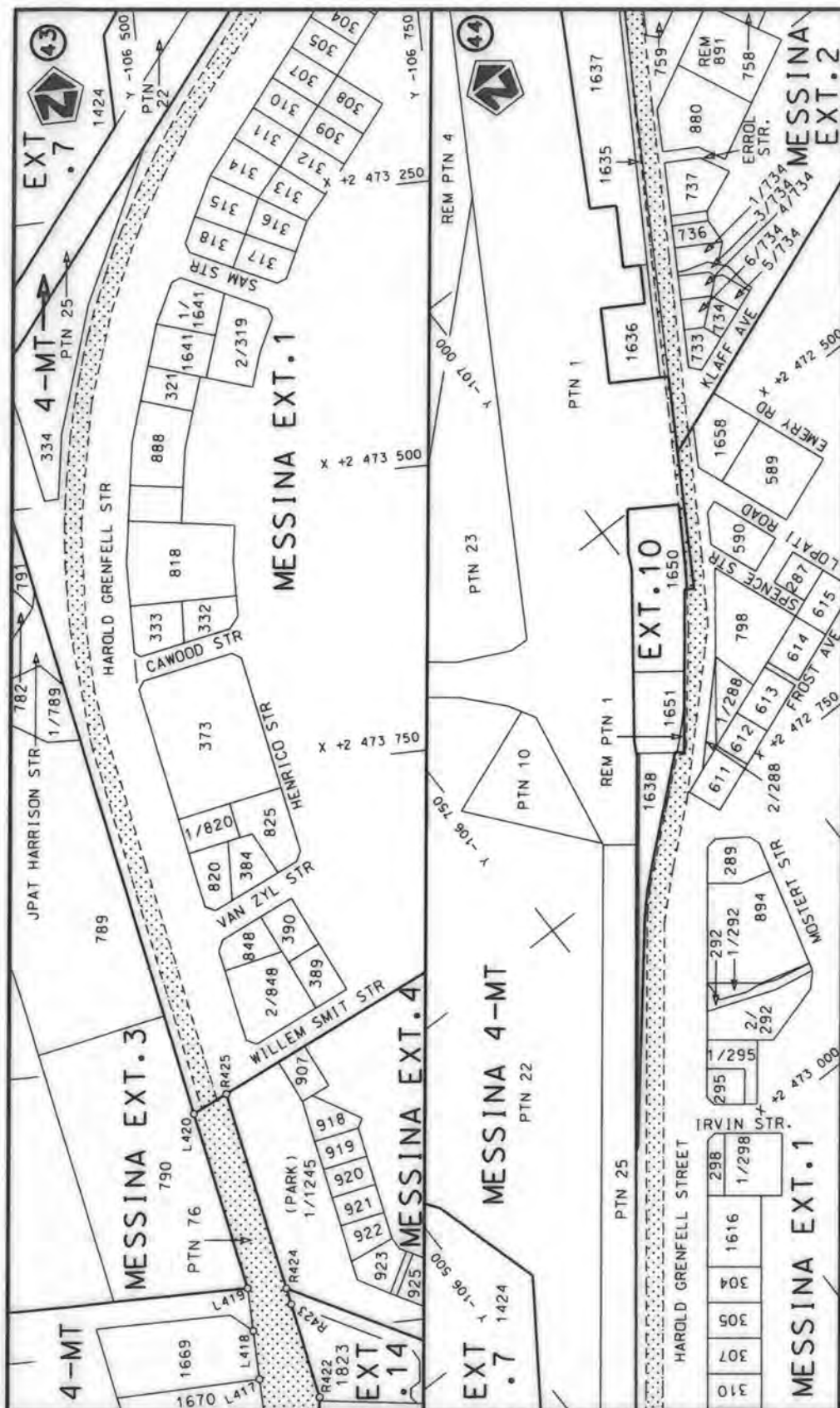
stel die padreserwe voor van 'n gedeelte
represents the road reserve of a portion
van Nasionale Roete N1
of National Route


29X

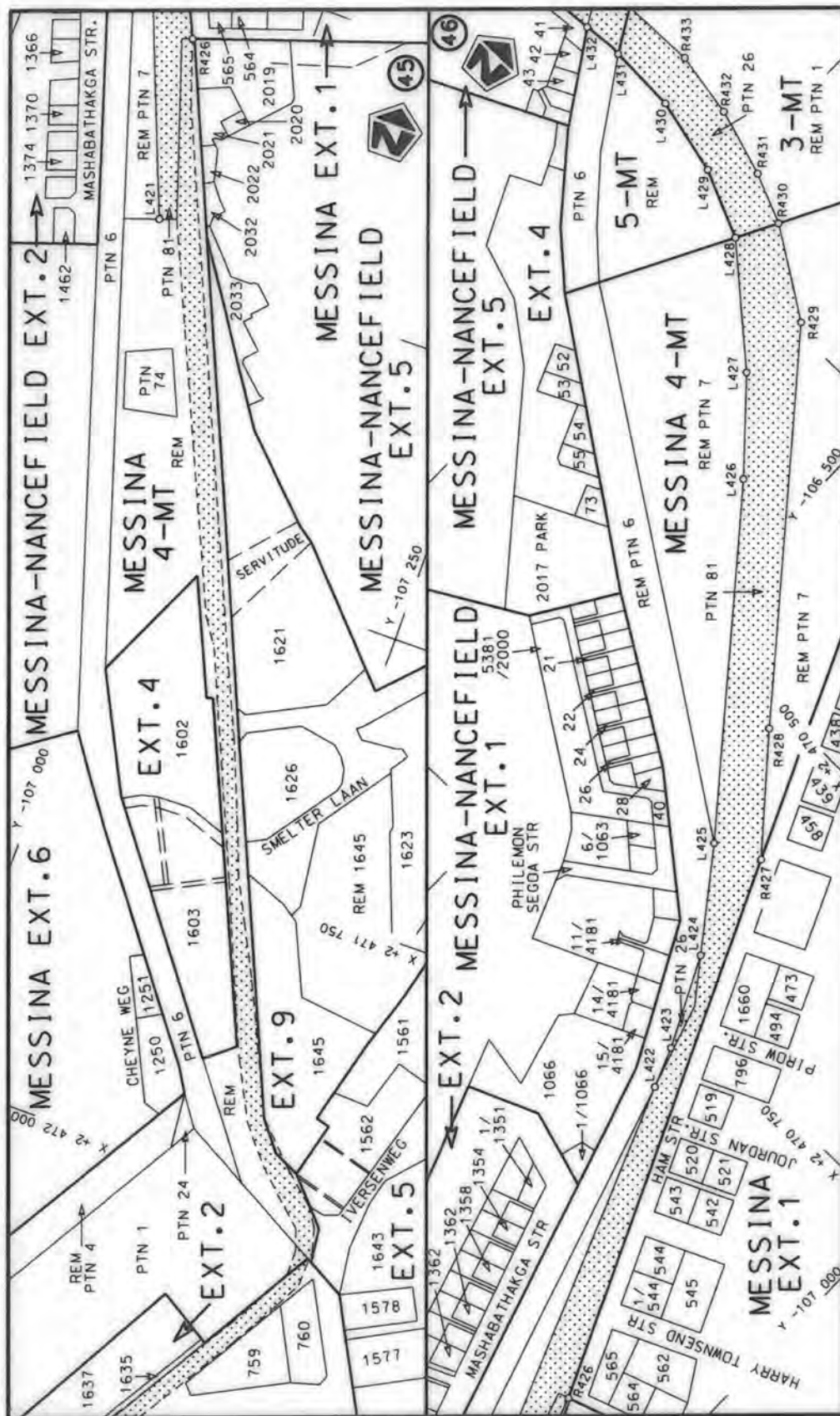
N1
Seksie
Section


Plan
P912/16

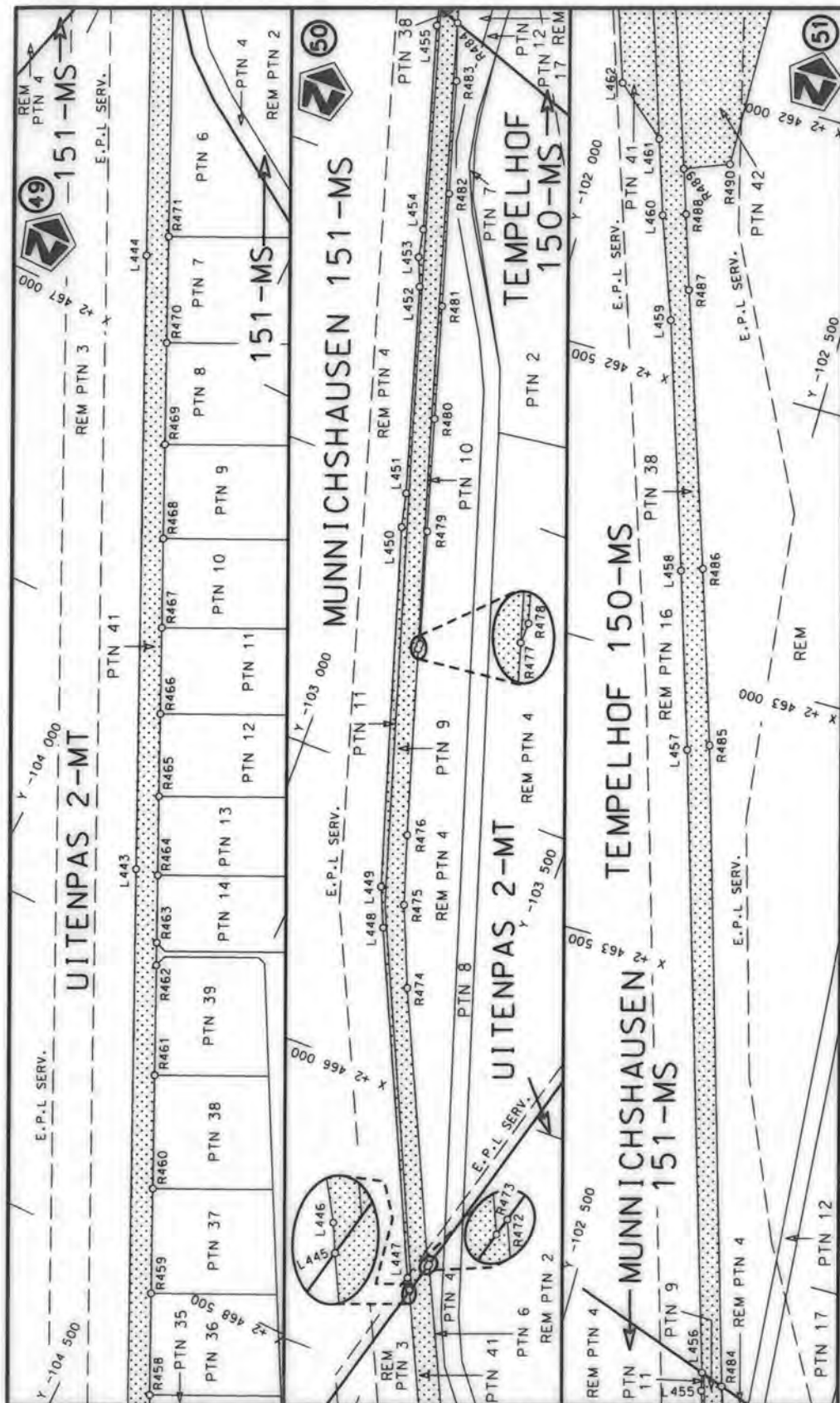
Val
Sheet 20 of 39



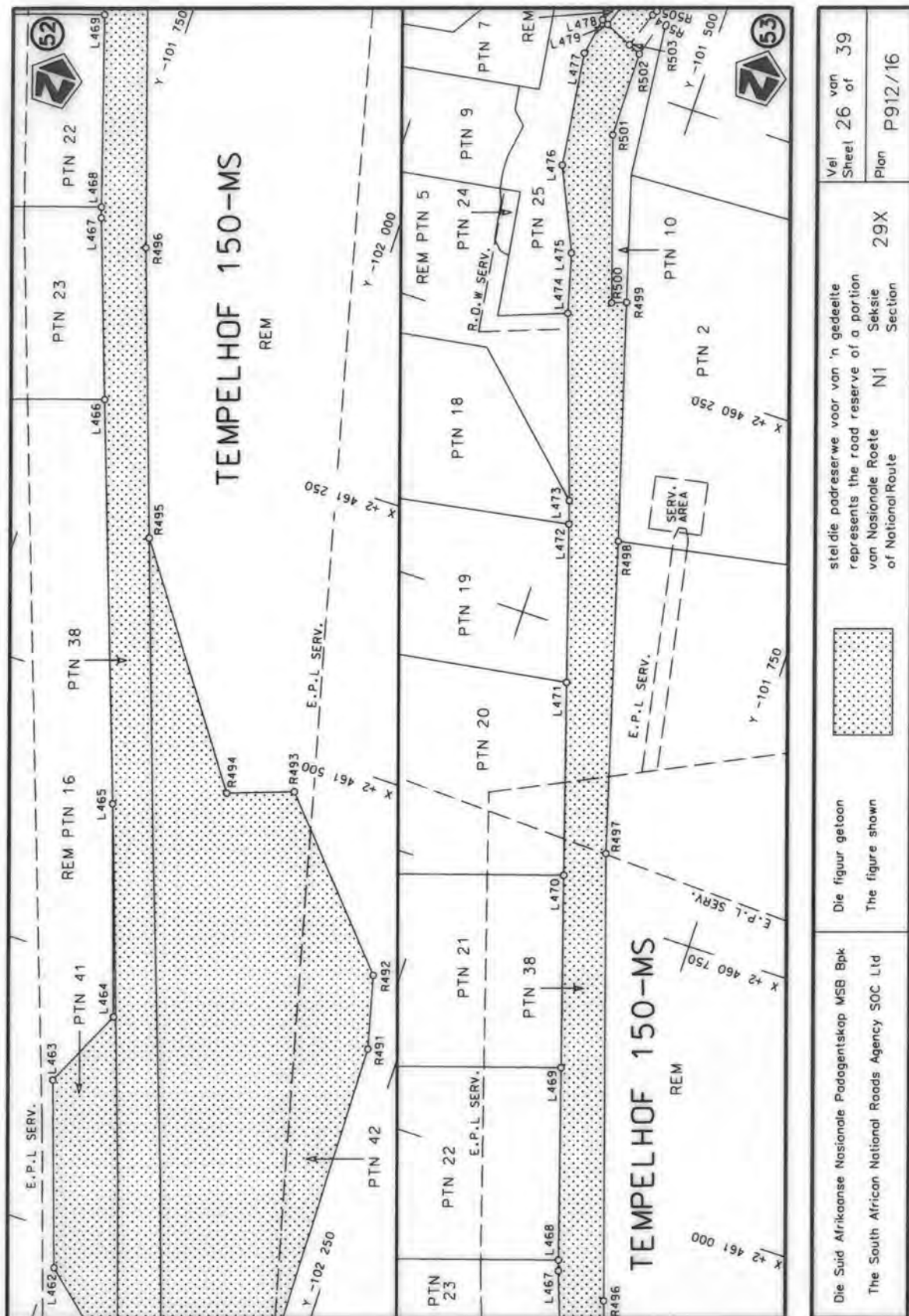
Die Suid Afrikaanse Nasionale Padagentskap MSB Bpk	Die figuur getoon		stel die padreserwe voor van 'n gedeelte represents the road reserve of a portion van Nasionale Roete N1 of National Route	Vol Sheet	22 of	39
The South African National Roads Agency SOC Ltd	The figure shown			29X	Plan	P912/16



Die Suid Afrikaanse Nasionale Padagentskap MSB Bpk The South African National Roads Agency SOC Ltd	Die figuur getoon The figure shown		steldie padreserwe voor van 'n gedeelte represents the road reserve of a portion van Nasionale Roete of National Route
	29X	N1	Sektie Section
Vel Sheet	23 of 39	Plan	P912/16



Die Suid Afrikaanse Nasionale Padagentskap MSB Bpk The South African National Roads Agency SOC Ltd	Die figuur getoon The figure shown	stel die padreserwe voor van 'n gedeelte represents the road reserve of a portion van Nasionale Roete N1 of National Route	29X	Vel Sheet 25 of 39
			Plan	p912/16



PADRESERVE KOÖRDINATE / ROAD RESERVE CO-ORDINATES									
LINKERKANT/LEFT HAND SIDE					REGTERKANT/RIGHT HAND SIDE				
	Y	X	WG 29°			Y	X		
L1	-94 403.25	2 547 400.72		R1	-94 439.92	2 547 400.70			
L2	-94 694.64	2 546 563.98		R2	-94 461.51	2 547 338.65			
L3	-94 723.51	2 546 494.41		R3	-94 532.63	2 547 177.83			
L4	-94 770.08	2 546 421.09		R4	-94 585.83	2 547 023.83			
L5	-94 819.28	2 546 362.96		R5	-94 640.95	2 546 820.90			
L6	-95 127.16	2 546 042.48		R6	-94 721.41	2 546 588.24			
L7	-95 297.56	2 545 864.37		R7	-94 768.75	2 546 485.56			
L8	-95 340.19	2 545 823.74		R8	-94 840.86	2 546 390.90			
L9	-95 389.50	2 545 782.95		R9	-95 158.73	2 546 056.56			
L10	-95 451.94	2 545 750.16		R10	-95 298.05	2 545 910.03			
L11	-95 519.21	2 545 712.53		R11	-95 330.90	2 545 875.48			
L12	-95 532.22	2 545 705.26		R12	-95 423.52	2 545 801.46			
L13	-95 644.57	2 545 702.82		R13	-95 483.67	2 545 770.98			
L14	-95 714.12	2 545 705.24		R14	-95 535.79	2 545 752.31			
L15	-95 759.95	2 545 709.58		R15	-95 646.15	2 545 734.34			
L16	-95 789.73	2 545 711.64		R16	-95 701.34	2 545 735.62			
L17	-95 945.05	2 545 744.08		R17	-95 775.11	2 545 746.02			
L18	-95 977.01	2 545 749.98		R18	-95 973.11	2 545 781.27			
L19	-96 062.73	2 545 755.11		R19	-96 019.92	2 545 786.60			
L20	-96 130.25	2 545 744.70		R20	-96 064.05	2 545 786.71			
L21	-96 207.37	2 545 728.33		R21	-96 116.68	2 545 782.23			
L22	-96 346.88	2 545 692.12		R22	-96 165.44	2 545 772.23			
L23	-96 500.93	2 545 648.20		R23	-96 298.15	2 545 737.67			
L24	-96 597.75	2 545 616.19		R24	-96 508.53	2 545 683.17			
L25	-96 697.51	2 545 587.03		R25	-96 630.11	2 545 647.31			
L26	-96 761.83	2 545 546.03		R26	-96 699.94	2 545 624.34			
L27	-96 810.57	2 545 501.33		R27	-96 755.03	2 545 602.89			
L28	-96 851.49	2 545 443.34		R28	-96 784.65	2 545 576.71			
L29	-96 939.29	2 545 347.90		R29	-96 822.57	2 545 542.05			
L30	-96 976.69	2 545 316.36		R30	-96 857.02	2 545 503.72			
L31	-97 014.58	2 545 286.12		R31	-96 957.42	2 545 375.81			
L32	-97 056.81	2 545 268.24		R32	-97 035.91	2 545 319.01			
L33	-97 172.89	2 545 245.11		R33	-97 148.08	2 545 283.72			
L34	-97 228.65	2 545 224.34		R34	-97 173.26	2 545 277.29			
L35	-97 292.53	2 545 171.71		R35	-97 218.73	2 545 264.46			
L36	-97 322.07	2 545 105.81		R36	-97 256.47	2 545 246.93			
L37	-97 320.06	2 545 054.16		R37	-97 304.87	2 545 212.97			
L38	-97 295.68	2 544 988.11		R38	-97 335.26	2 545 164.54			
L39	-97 264.91	2 544 956.82		R39	-97 349.81	2 545 122.18			
L40	-97 209.89	2 544 918.41		R40	-97 358.65	2 545 060.73			
L41	-97 153.26	2 544 909.60		R41	-97 346.05	2 545 014.30			
L42	-97 120.97	2 544 904.15		R42	-97 336.74	2 544 986.25			
L43	-96 980.83	2 544 896.24		R43	-97 317.29	2 544 954.31			
L44	-96 924.67	2 544 907.18		R44	-97 277.47	2 544 907.01			
L45	-96 844.68	2 544 929.65		R45	-97 207.66	2 544 880.05			
L46	-96 761.87	2 544 944.17		R46	-97 146.80	2 544 873.39			
L47	-96 672.55	2 544 937.13		R47	-97 111.96	2 544 870.66			
L48	-96 615.13	2 544 915.20		R48	-96 963.16	2 544 862.50			
L49	-96 544.75	2 544 871.46		R49	-96 910.74	2 544 875.17			
L50	-96 394.10	2 544 776.48		R50	-96 791.18	2 544 905.08			
L51	-96 291.89	2 544 669.76		R51	-96 712.32	2 544 905.81			
					<div> <div>Vel 28 Van 39</div> <div>Sheet of</div> <div>P912/16</div> </div>				

PADRESERWE KOÖRDINATE / ROAD RESERVE CO-ORDINATES									
LINKERKANT/LEFT HAND SIDE					REGTERKANT/RIGHT HAND SIDE				
	Y		X	WG 29°		Y		X	
L52	-96 240.73	2	544 633.33		R52	-96 661.25	2	544 896.30	
L53	-96 048.45	2	544 536.55		R53	-96 642.03	2	544 890.13	
L54	-95 981.31	2	544 510.11		R54	-96 597.90	2	544 867.14	
L55	-95 868.75	2	544 446.10		R55	-96 460.81	2	544 781.53	
L56	-95 790.87	2	544 397.93		R56	-96 441.92	2	544 768.41	
L57	-95 753.17	2	544 374.44		R57	-96 413.49	2	544 746.09	
L58	-95 677.15	2	544 316.45		R58	-96 402.01	2	544 734.52	
L59	-95 518.52	2	544 193.42		R59	-96 346.96	2	544 673.39	
L60	-95 440.80	2	544 156.37		R60	-96 326.32	2	544 655.75	
L61	-95 316.09	2	544 112.70		R61	-96 269.05	2	544 607.73	
L62	-95 247.71	2	544 068.87		R62	-96 032.26	2	544 487.62	
L63	-95 185.80	2	543 980.27		R63	-95 900.96	2	544 418.03	
L64	-95 080.15	2	543 800.65		R64	-95 780.93	2	544 355.12	
L65	-95 054.71	2	543 758.01		R65	-95 742.18	2	544 325.89	
L66	-95 053.33	2	543 727.04		R66	-95 590.60	2	544 207.84	
L67	-95 027.46	2	543 674.60		R67	-95 542.49	2	544 171.10	
L68	-95 030.68	2	543 648.22		R68	-95 506.93	2	544 148.31	
L69	-95 030.52	2	543 643.09		R69	-95 473.71	2	544 134.62	
L70	-95 030.87	2	543 638.03		R70	-95 353.96	2	544 078.00	
L71	-95 028.61	2	543 592.26		R71	-95 328.11	2	544 080.98	
L72	-95 032.00	2	543 516.65		R72	-95 309.62	2	544 071.30	
L73	-95 034.27	2	543 490.36		R73	-95 284.12	2	544 053.52	
L74	-95 048.69	2	543 297.80		R74	-95 259.99	2	544 026.43	
L75	-95 054.64	2	543 218.52		R75	-95 237.76	2	543 994.65	
L76	-95 066.57	2	543 060.36		R76	-95 216.91	2	543 961.38	
L77	-95 125.80	2	542 957.69		R77	-95 190.08	2	543 923.46	
L78	-95 185.39	2	542 896.64		R78	-95 179.14	2	543 905.36	
L79	-95 244.57	2	542 841.23		R79	-95 153.69	2	543 857.99	
L80	-95 247.27	2	542 844.99		R80	-95 103.66	2	543 764.87	
L81	-95 258.77	2	542 836.47		R81	-95 081.90	2	543 666.30	
L82	-95 456.65	2	542 692.63		R82	-95 070.43	2	543 617.91	
L83	-95 611.50	2	542 584.97		R83	-95 066.43	2	543 511.95	
L84	-95 658.40	2	542 556.53		R84	-95 062.09	2	543 508.39	
L85	-95 704.31	2	542 535.01		R85	-95 077.29	2	543 301.99	
L86	-95 777.14	2	542 512.34		R86	-95 082.82	2	543 219.94	
L87	-95 836.06	2	542 501.31		R87	-95 086.35	2	543 179.00	
L88	-95 909.66	2	542 490.93		R88	-95 093.24	2	543 134.43	
L89	-96 009.89	2	542 499.91		R89	-95 103.17	2	543 094.33	
L90	-96 469.77	2	542 549.08		R90	-95 119.96	2	543 048.72	
L91	-96 488.59	2	542 552.10		R91	-95 140.89	2	543 010.85	
L92	-96 574.71	2	542 558.20		R92	-95 151.12	2	542 992.33	
L93	-96 652.44	2	542 556.83		R93	-95 154.73	2	542 985.80	
L94	-96 716.81	2	542 545.65		R94	-95 170.04	2	542 958.20	
L95	-96 775.03	2	542 527.54		R95	-95 207.10	2	542 915.78	
L96	-96 826.24	2	542 503.76		R96	-95 214.98	2	542 903.90	
L97	-96 845.59	2	542 493.81		R97	-95 247.61	2	542 875.17	
L98	-96 928.59	2	542 427.56		R98	-95 274.05	2	542 857.77	
L99	-96 986.05	2	542 360.66		R99	-95 277.13	2	542 862.05	
L100	-97 037.40	2	542 267.29		R100	-95 475.26	2	542 718.06	
L101	-97 065.61	2	542 170.61		R101	-95 628.91	2	542 608.76	
L102	-97 071.46	2	542 052.13		R102	-95 669.49	2	542 585.77	
Vel Sheet 29					Van of 39				
					P912/16				

PADRESERWE KOÖRDINATE / ROAD RESERVE CO-ORDINATES									
LINKERKANT/LEFT HAND SIDE					REGTERKANT/RIGHT HAND SIDE				
	Y	X	WG 29°			Y	X		
L103	-97 068.67	2 542 024.31		R103	-95 781.52	2 542 545.41			
L104	-97 033.72	2 541 916.46		R104	-95 839.38	2 542 531.14			
L105	-96 949.26	2 541 725.07		R105	-95 910.98	2 542 522.47			
L106	-96 843.46	2 541 505.26		R106	-95 937.14	2 542 523.97			
L107	-96 660.38	2 541 231.87		R107	-96 012.24	2 542 532.11			
L108	-96 633.65	2 541 211.48		R108	-96 195.96	2 542 552.08			
L109	-96 584.14	2 541 151.68		R109	-96 215.01	2 542 561.40			
L110	-96 552.13	2 541 136.66		R110	-96 222.96	2 542 562.21			
L111	-96 474.41	2 541 127.09		R111	-96 244.04	2 542 557.31			
L112	-96 172.16	2 541 172.09		R112	-96 475.84	2 542 582.50			
L113	-96 115.00	2 541 196.04		R113	-96 563.83	2 542 591.01			
L114	-96 086.69	2 541 214.67		R114	-96 595.08	2 542 592.10			
L115	-96 048.11	2 541 229.96		R115	-96 650.06	2 542 589.61			
L116	-96 021.49	2 541 241.81		R116	-96 723.46	2 542 576.36			
L117	-95 982.27	2 541 252.68		R117	-96 785.76	2 542 555.54			
L118	-95 959.85	2 541 258.07		R118	-96 840.22	2 542 531.93			
L119	-95 947.24	2 541 259.89		R119	-96 918.38	2 542 491.59			
L120	-95 939.69	2 541 260.73		R120	-96 924.97	2 542 489.62			
L121	-95 873.04	2 541 278.56		R121	-96 949.22	2 542 467.18			
L122	-95 820.81	2 541 251.39		R122	-96 941.46	2 542 461.28			
L123	-95 800.60	2 541 203.62		R123	-97 013.38	2 542 377.55			
L124	-95 784.75	2 541 122.29		R124	-97 066.67	2 542 279.49			
L125	-95 809.09	2 541 063.12		R125	-97 096.89	2 542 175.92			
L126	-95 872.55	2 540 983.99		R126	-97 098.17	2 542 150.12			
L127	-95 925.82	2 540 928.72		R127	-97 100.94	2 542 117.25			
L128	-95 952.12	2 540 870.98		R128	-97 101.19	2 542 068.31			
L129	-95 942.41	2 540 766.12		R129	-97 101.95	2 542 041.23			
L130	-95 912.65	2 540 681.11		R130	-97 096.19	2 542 018.65			
L131	-95 898.87	2 540 630.38		R131	-97 064.83	2 541 905.38			
L132	-95 888.60	2 540 634.67		R132	-96 979.07	2 541 714.38			
L133	-95 883.15	2 540 566.01		R133	-96 875.26	2 541 488.46			
L134	-95 865.38	2 540 490.53		R134	-96 824.54	2 541 405.35			
L135	-95 811.71	2 540 260.69		R135	-96 672.10	2 541 182.91			
L136	-95 531.49	2 540 141.91		R136	-96 644.24	2 541 148.82			
L137	-95 517.93	2 540 141.72		R137	-96 610.07	2 541 122.74			
L138	-95 487.70	2 540 132.63		R138	-96 572.80	2 541 102.72			
L139	-95 317.29	2 540 026.16		R139	-96 509.95	2 541 089.32			
L140	-95 287.65	2 540 002.88		R140	-96 479.61	2 541 090.75			
L141	-95 238.01	2 539 971.54		R141	-96 358.23	2 541 095.70			
L142	-95 161.61	2 539 944.12		R142	-96 166.53	2 541 136.53			
L143	-95 037.87	2 539 931.37		R143	-95 941.92	2 541 217.94			
L144	-94 947.83	2 539 912.04		R144	-95 885.55	2 541 220.86			
L145	-94 830.73	2 539 854.99		R145	-95 824.76	2 541 150.58			
L146	-94 755.48	2 539 771.41		R146	-95 822.74	2 541 122.17			
L147	-94 699.03	2 539 681.96		R147	-95 835.44	2 541 087.62			
L148	-94 667.56	2 539 554.82		R148	-95 872.62	2 541 045.51			
L149	-94 672.89	2 539 435.75		R149	-95 945.77	2 540 972.86			
L150	-94 706.98	2 539 346.78		R150	-95 972.00	2 540 936.30			
L151	-94 797.97	2 539 126.53		R151	-95 987.02	2 540 897.70			
L152	-94 806.12	2 539 084.80		R152	-95 995.06	2 540 843.02			
L153	-94 810.52	2 539 084.07		R153	-95 987.23	2 540 780.91			
Vel Sheet 30					Van of 39		P912/16		

PADRESERWE KOÖRDINATE / ROAD RESERVE CO-ORDINATES									
LINKERKANT/LEFT HAND SIDE					REGTERKANT/RIGHT HAND SIDE				
	Y	X	WG 29°			Y	X		
L154	-94 819.97	2 539 072.71		R154	-95 946.22	2 540 674.96			
L155	-95 360.66	2 537 758.91		R155	-95 928.70	2 540 617.94			
L156	-95 484.82	2 537 456.46		R156	-95 913.11	2 540 558.69			
L157	-95 617.84	2 537 123.90		R157	-95 895.38	2 540 448.75			
L158	-95 623.97	2 537 074.42		R158	-95 865.24	2 540 143.22			
L159	-95 627.27	2 537 049.94		R159	-95 847.35	2 540 096.87			
L160	-95 582.09	2 536 772.99		R160	-95 800.13	2 540 049.94			
L161	-95 583.16	2 536 720.49		R161	-95 723.00	2 539 957.48			
L162	-95 590.66	2 536 681.17		R162	-95 626.50	2 540 044.27			
L163	-95 598.13	2 536 644.53		R163	-95 532.90	2 540 000.89			
L164	-95 655.76	2 536 429.20		R164	-95 403.38	2 539 955.18			
L165	-95 645.96	2 536 353.52		R165	-95 202.57	2 539 918.23			
L166	-95 623.29	2 536 294.87		R166	-94 919.27	2 539 853.84			
L167	-95 598.80	2 536 239.01		R167	-94 805.62	2 539 747.23			
L168	-95 551.38	2 536 108.33		R168	-94 788.77	2 539 762.07			
L169	-95 460.41	2 535 913.57		R169	-94 759.84	2 539 717.05			
L170	-95 408.75	2 535 851.76		R170	-94 730.73	2 539 669.97			
L171	-95 409.68	2 535 832.31		R171	-94 703.35	2 539 554.90			
L172	-95 178.82	2 535 497.25		R172	-94 707.35	2 539 450.87			
L173	-95 081.01	2 535 074.30		R173	-94 710.07	2 539 437.94			
L174	-95 066.42	2 535 026.77		R174	-94 801.14	2 539 201.23			
L175	-95 051.73	2 534 970.10		R175	-95 380.10	2 537 792.85			
L176	-95 037.28	2 534 969.02		R176	-95 521.52	2 537 457.81			
L177	-95 019.87	2 534 919.66		R177	-95 596.97	2 537 272.46			
L178	-94 982.77	2 534 873.18		R178	-95 646.91	2 537 130.89			
L179	-94 982.56	2 534 854.96		R179	-95 662.60	2 537 088.04			
L180	-94 912.89	2 534 796.10		R180	-95 661.77	2 537 074.16			
L181	-94 813.90	2 534 737.71		R181	-95 656.59	2 536 995.30			
L182	-94 741.46	2 534 694.04		R182	-95 618.19	2 536 802.33			
L183	-94 656.47	2 534 647.85		R183	-95 614.03	2 536 723.97			
L184	-94 602.08	2 534 614.37		R184	-95 627.37	2 536 656.30			
L185	-94 331.76	2 534 452.16		R185	-95 662.37	2 536 532.92			
L186	-94 052.94	2 534 296.75		R186	-95 683.47	2 536 472.58			
L187	-92 063.44	2 533 371.22		R187	-95 687.57	2 536 446.70			
L188	-91 544.61	2 533 126.14		R188	-95 685.35	2 536 426.26			
L189	-91 548.67	2 533 123.72		R189	-95 685.72	2 536 423.95			
L190	-90 387.54	2 532 581.57		R190	-95 684.21	2 536 399.34			
L191	-90 322.72	2 532 559.98		R191	-95 682.91	2 536 362.68			
L192	-90 204.14	2 532 544.57		R192	-95 671.50	2 536 286.99			
L193	-89 887.96	2 532 514.37		R193	-95 638.92	2 536 228.14			
L194	-89 844.82	2 532 500.38		R194	-95 635.40	2 536 207.80			
L195	-89 803.34	2 532 479.63		R195	-95 619.57	2 536 179.96			
L196	-89 765.35	2 532 454.56		R196	-95 613.94	2 536 170.08			
L197	-89 746.34	2 532 438.82		R197	-95 601.90	2 536 151.35			
L198	-89 727.85	2 532 417.69		R198	-95 582.49	2 536 100.24			
L199	-89 694.39	2 532 369.51		R199	-95 532.48	2 535 982.78			
L200	-89 654.65	2 532 291.80		R200	-95 496.71	2 535 904.26			
L201	-89 641.12	2 532 240.36		R201	-95 465.65	2 535 864.06			
L202	-89 649.90	2 532 180.00		R202	-95 447.67	2 535 833.92			
L203	-89 659.76	2 532 127.28		R203	-95 261.98	2 535 561.50			
L204	-89 742.94	2 531 900.97		R204	-95 264.96	2 535 542.50			
Vel Sheet 31					Van of 39		P912/16		

PADRESERVE KOÖRDINATE / ROAD RESERVE CO-ORDINATES									
LINKERKANT/LEFT HAND SIDE					REGTERKANT/RIGHT HAND SIDE				
	Y		X	WG 29°		Y		X	
L205	-90 002.90	2	531	621.39	R205	-95 230.33	2	535	509.65
L206	-90 245.90	2	531	281.98	R206	-95 222.74	2	535	446.93
L207	-90 695.96	2	530	653.32	R207	-95 199.36	2	535	403.98
L208	-90 747.89	2	530	566.27	R208	-95 152.89	2	535	243.37
L209	-90 785.94	2	530	489.06	R209	-95 111.68	2	535	067.13
L210	-90 853.95	2	530	293.46	R210	-95 107.99	2	535	033.34
L211	-90 877.91	2	530	184.03	R211	-95 094.82	2	535	008.98
L212	-90 914.89	2	529	817.52	R212	-95 076.12	2	534	939.26
L213	-90 919.18	2	529	775.78	R213	-95 045.78	2	534	880.96
L214	-90 946.22	2	529	512.20	R214	-95 006.74	2	534	831.04
L215	-90 984.59	2	529	096.74	R215	-94 930.72	2	534	770.18
L216	-90 974.78	2	528	792.79	R216	-94 808.10	2	534	697.54
L217	-90 936.08	2	528	580.18	R217	-94 753.52	2	534	664.43
L218	-90 842.95	2	528	253.08	R218	-94 455.02	2	534	484.47
L219	-90 684.32	2	527	696.05	R219	-94 442.21	2	534	434.73
L220	-90 685.07	2	527	579.83	R220	-94 396.81	2	534	429.45
L221	-90 706.66	2	527	421.86	R221	-94 344.16	2	534	416.39
L222	-90 761.40	2	527	305.33	R222	-94 231.15	2	534	349.22
L223	-90 906.82	2	527	089.01	R223	-94 054.04	2	534	258.68
L224	-90 958.72	2	526	998.49	R224	-91 581.61	2	533	104.06
L225	-90 991.42	2	526	898.57	R225	-90 414.08	2	532	558.85
L226	-91 005.75	2	526	809.30	R226	-90 374.10	2	532	543.36
L227	-91 037.23	2	526	426.85	R227	-90 326.26	2	532	528.15
L228	-91 264.52	2	523	665.77	R228	-90 278.45	2	532	519.37
L229	-91 287.06	2	523	397.35	R229	-89 939.06	2	532	493.07
L230	-91 415.80	2	521	847.61	R230	-89 903.00	2	532	488.07
L231	-91 447.64	2	521	617.91	R231	-89 867.43	2	532	477.15
L232	-91 502.28	2	521	388.77	R232	-89 823.49	2	532	456.86
L233	-91 989.29	2	519	492.34	R233	-89 783.34	2	532	429.86
L234	-92 384.94	2	517	948.03	R234	-89 748.45	2	532	395.67
L235	-92 573.44	2	517	214.94	R235	-89 718.44	2	532	357.07
L236	-93 182.17	2	514	837.10	R236	-89 717.15	2	532	333.67
L237	-93 240.21	2	514	460.84	R237	-89 684.70	2	532	275.47
L238	-93 328.26	2	513	473.86	R238	-89 676.83	2	532	226.49
L239	-93 344.95	2	513	342.62	R239	-89 686.45	2	532	149.19
L240	-93 398.96	2	513	045.31	R240	-89 782.32	2	531	897.09
L241	-93 435.30	2	512	875.59	R241	-89 799.73	2	531	875.10
L242	-93 656.38	2	511	858.94	R242	-89 869.59	2	531	806.15
L243	-93 686.23	2	511	717.11	R243	-90 019.16	2	531	647.35
L244	-93 702.91	2	511	599.62	R244	-90 276.56	2	531	293.06
L245	-93 710.78	2	511	398.98	R245	-90 737.26	2	530	646.84
L246	-93 707.70	2	510	972.96	R246	-90 777.36	2	530	578.33
L247	-93 698.89	2	509	752.62	R247	-90 828.22	2	530	468.79
L248	-93 699.41	2	509	523.33	R248	-90 869.27	2	530	354.91
L249	-93 701.78	2	509	324.04	R249	-90 900.08	2	530	237.84
L250	-93 712.98	2	509	217.98	R250	-90 917.94	2	530	118.76
L251	-93 764.60	2	508	921.28	R251	-90 977.47	2	529	512.13
L252	-93 837.43	2	508	531.99	R252	-91 020.76	2	529	076.61
L253	-93 918.29	2	508	092.24	R253	-91 001.96	2	528	763.82
L254	-93 996.19	2	507	673.07	R254	-90 978.50	2	528	630.20
L255	-94 298.07	2	506	055.20	R255	-90 946.28	2	528	507.39
Vel Sheet					32	Van of		39	P912/16

PADRESERVE KOÖRDINATE / ROAD RESERVE CO-ORDINATES									
LINKERKANT/LEFT HAND SIDE					REGTERKANT/RIGHT HAND SIDE				
	Y		X	WG 29°		Y		X	
L256	-94 307.95	2	505	891.99	R256	-90 868.41	2	528	230.60
L257	-94 253.08	2	505	811.59	R257	-90 863.28	2	528	212.36
L258	-94 283.94	2	505	647.38	R258	-90 815.66	2	528	017.03
L259	-94 343.13	2	505	658.54	R259	-90 717.86	2	527	683.23
L260	-94 397.71	2	505	522.58	R260	-90 721.42	2	527	548.92
L261	-94 417.37	2	505	418.12	R261	-90 737.62	2	527	449.53
L262	-94 483.28	2	505	086.81	R262	-90 789.00	2	527	334.81
L263	-94 595.25	2	504	546.22	R263	-90 981.31	2	527	028.93
L264	-94 752.41	2	503	798.43	R264	-91 025.30	2	526	916.45
L265	-94 839.06	2	503	387.85	R265	-91 033.36	2	526	857.43
L266	-95 046.48	2	502	404.48	R266	-91 303.26	2	523	589.63
L267	-95 478.60	2	500	493.67	R267	-91 310.39	2	523	506.22
L268	-95 543.87	2	500	211.09	R268	-91 317.59	2	523	416.03
L269	-95 682.54	2	499	639.20	R269	-91 447.00	2	521	853.93
L270	-95 739.52	2	499	404.52	R270	-91 481.01	2	521	624.80
L271	-95 915.34	2	498	685.09	R271	-91 516.11	2	521	479.38
L272	-95 956.69	2	498	524.90	R272	-92 022.40	2	519	491.92
L273	-96 109.35	2	497	890.35	R273	-92 028.15	2	519	469.62
L274	-96 159.55	2	497	799.35	R274	-92 414.99	2	517	961.47
L275	-96 188.81	2	497	746.13	R275	-92 603.08	2	517	228.18
L276	-96 404.64	2	497	524.62	R276	-93 224.69	2	514	804.68
L277	-96 417.40	2	497	516.05	R277	-93 254.52	2	514	688.73
L278	-97 065.45	2	496	853.72	R278	-93 335.53	2	513	770.12
L279	-97 288.65	2	496	625.80	R279	-93 367.83	2	513	444.30
L280	-97 405.14	2	496	440.08	R280	-93 391.81	2	513	283.93
L281	-97 446.40	2	496	318.08	R281	-93 457.64	2	512	927.94
L282	-97 510.71	2	496	098.96	R282	-93 540.13	2	512	546.09
L283	-97 553.70	2	495	996.08	R283	-93 731.75	2	511	667.55
L284	-97 600.55	2	495	912.56	R284	-93 743.02	2	511	499.45
L285	-98 163.67	2	495	137.99	R285	-93 739.13	2	510	980.04
L286	-98 312.20	2	494	908.17	R286	-93 728.06	2	509	519.57
L287	-98 458.13	2	494	679.99	R287	-93 727.58	2	509	449.93
L288	-98 502.43	2	494	610.11	R288	-93 734.16	2	509	288.87
L289	-98 591.69	2	494	469.64	R289	-93 757.22	2	509	129.39
L290	-98 709.53	2	494	281.14	R290	-93 952.65	2	508	083.55
L291	-98 744.59	2	494	217.74	R291	-93 999.52	2	507	835.07
L292	-98 785.84	2	494	123.37	R292	-94 019.96	2	507	725.92
L293	-98 923.89	2	493	775.34	R293	-94 087.32	2	507	369.80
L294	-99 350.96	2	492	689.25	R294	-94 153.61	2	507	016.13
L295	-99 393.26	2	492	607.61	R295	-94 253.62	2	506	467.86
L296	-99 429.49	2	492	537.87	R296	-94 280.40	2	506	323.16
L297	-99 623.84	2	492	235.99	R297	-94 328.64	2	506	061.42
L298	-99 667.19	2	492	153.85	R298	-94 341.50	2	505	992.08
L299	-99 717.80	2	492	070.19	R299	-94 400.27	2	505	839.68
L300	-99 793.67	2	491	925.14	R300	-94 431.07	2	505	674.74
L301	-99 824.12	2	491	797.42	R301	-94 443.06	2	505	471.34
L302	-99 836.70	2	491	698.71	R302	-94 507.27	2	505	155.95
L303	-99 849.50	2	491	604.72	R303	-94 505.53	2	505	150.93
L304	-99 879.75	2	491	315.65	R304	-94 549.80	2	504	935.86
L305	-99 912.91	2	491	002.02	R305	-94 632.85	2	504	532.43
L306	-99 931.25	2	490	814.35	R306	-94 788.49	2	503	808.35
					Vel 33 Van 39 of 39 P912/16				
					Sheet of				

PADRESERWE KOÖRDINATE / ROAD RESERVE CO-ORDINATES														
LINKERKANT/LEFT HAND SIDE					REGTERKANT/RIGHT HAND SIDE									
	Y		X	WG 29°		Y		X						
L307	-99 932.06	2	490 782.34		R307	-94 875.00	2	503 397.72						
L308	-99 935.55	2	490 702.76		R308	-95 094.07	2	502 359.57						
L309	-99 940.66	2	490 533.41		R309	-95 520.13	2	500 478.14						
L310	-99 971.18	2	490 448.10		R310	-95 749.81	2	499 519.96						
L311	-99 982.61	2	490 416.17		R311	-96 014.16	2	498 437.53						
L312	-100 018.75	2	490 305.41		R312	-96 118.34	2	498 011.27						
L313	-100 046.78	2	490 241.65		R313	-96 159.12	2	497 896.03						
L314	-100 139.97	2	490 144.91		R314	-96 175.80	2	497 865.31						
L315	-100 198.75	2	490 029.23		R315	-96 215.80	2	497 792.00						
L316	-100 222.63	2	489 948.24		R316	-96 290.61	2	497 695.05						
L317	-100 240.46	2	489 596.00		R317	-96 468.38	2	497 509.26						
L318	-100 288.83	2	489 456.04		R318	-97 291.62	2	496 668.42						
L319	-100 403.14	2	489 290.23		R319	-97 351.48	2	496 596.05						
L320	-100 506.54	2	489 233.29		R320	-97 422.88	2	496 486.12						
L321	-100 595.40	2	489 194.72		R321	-97 448.77	2	496 409.89						
L322	-100 777.62	2	489 098.89		R322	-97 488.18	2	496 300.78						
L323	-100 888.78	2	489 057.47		R323	-97 524.35	2	496 161.16						
L324	-100 911.19	2	489 042.21		R324	-97 569.41	2	496 039.67						
L325	-101 080.38	2	488 878.08		R325	-97 625.50	2	495 929.69						
L326	-101 108.88	2	488 828.62		R326	-97 742.25	2	495 769.11						
L327	-101 159.22	2	488 760.17		R327	-97 822.30	2	495 659.18						
L328	-101 181.66	2	488 703.25		R328	-98 061.73	2	495 331.29						
L329	-101 236.63	2	488 607.83		R329	-98 205.97	2	495 134.82						
L330	-101 364.58	2	488 357.34		R330	-98 249.05	2	495 068.20						
L331	-101 468.84	2	488 087.11		R331	-98 638.67	2	494 457.78						
L332	-101 560.85	2	487 752.13		R332	-98 744.15	2	494 301.54						
L333	-101 791.20	2	486 941.07		R333	-98 801.25	2	494 199.73						
L334	-101 847.83	2	486 747.60		R334	-98 949.28	2	493 803.50						
L335	-101 989.83	2	486 166.58		R335	-98 985.18	2	493 707.77						
L336	-101 990.93	2	486 167.60		R336	-99 384.06	2	492 695.89						
L337	-101 995.18	2	486 150.34		R337	-99 458.36	2	492 552.94						
L338	-102 027.48	2	486 041.27		R338	-99 741.26	2	492 111.88						
L339	-102 157.87	2	485 502.86		R339	-99 796.99	2	492 005.18						
L340	-102 176.77	2	485 408.58		R340	-99 825.16	2	491 929.10						
L341	-102 201.56	2	485 306.52		R341	-99 849.01	2	491 852.63						
L342	-102 316.70	2	484 834.39		R342	-99 865.35	2	491 765.49						
L343	-102 321.44	2	484 805.91		R343	-99 910.63	2	491 342.14						
L344	-102 363.50	2	484 646.00		R344	-99 984.59	2	490 681.31						
L345	-102 401.22	2	484 518.20		R345	-100 000.83	2	490 531.55						
L346	-102 424.56	2	484 410.97		R346	-100 020.57	2	490 461.57						
L347	-102 443.01	2	484 364.85		R347	-100 025.97	2	490 442.42						
L348	-102 435.42	2	484 359.67		R348	-100 057.37	2	490 359.10						
L349	-102 508.36	2	484 173.34		R349	-100 116.53	2	490 281.87						
L350	-102 674.52	2	483 829.41		R350	-100 230.74	2	490 091.98						
L351	-102 750.44	2	483 658.24		R351	-100 265.94	2	489 937.71						
L352	-102 837.70	2	483 490.68		R352	-100 272.31	2	489 852.53						
L353	-102 949.59	2	483 254.90		R353	-100 293.18	2	489 589.46						
L354	-102 985.83	2	483 177.93		R354	-100 318.33	2	489 513.82						
L355	-103 006.61	2	483 136.80		R355	-100 344.41	2	489 443.82						
L356	-103 023.37	2	483 096.15		R356	-100 385.63	2	489 389.34						
L357	-103 062.84	2	483 027.29		R357	-100 447.94	2	489 329.17						
					<table><tr><td>Vel Sheet</td><td>34</td><td>Van of</td><td>39</td><td>P912/16</td></tr></table>					Vel Sheet	34	Van of	39	P912/16
Vel Sheet	34	Van of	39	P912/16										

PADRESERWE KOÖRDINATE / ROAD RESERVE CO-ORDINATES									
LINKERKANT/LEFT HAND SIDE					REGTERKANT/RIGHT HAND SIDE				
	Y		X	WG 29°		Y		X	
L358	-103 085.73	2	482	961.43	R358	-100 498.16	2	489	297.41
L359	-103 122.17	2	482	787.54	R359	-100 825.83	2	489	136.36
L360	-103 105.57	2	482	641.31	R360	-100 847.73	2	489	133.99
L361	-103 103.48	2	482	593.77	R361	-100 959.34	2	489	077.93
L362	-103 099.97	2	482	488.49	R362	-100 991.77	2	489	048.43
L363	-103 094.89	2	482	360.58	R363	-101 069.86	2	488	995.96
L364	-103 087.39	2	482	290.45	R364	-101 133.41	2	488	919.68
L365	-103 074.33	2	482	095.64	R365	-101 173.54	2	488	852.05
L366	-103 064.73	2	481	932.21	R366	-101 342.53	2	488	536.71
L367	-103 068.91	2	481	913.90	R367	-101 392.58	2	488	439.47
L368	-103 058.33	2	481	745.86	R368	-101 429.43	2	488	343.58
L369	-103 053.34	2	481	703.40	R369	-101 451.17	2	488	337.02
L370	-103 007.06	2	481	541.89	R370	-101 457.67	2	488	321.35
L371	-103 002.24	2	481	543.21	R371	-101 445.02	2	488	290.90
L372	-102 937.64	2	481	396.64	R372	-101 576.94	2	487	841.79
L373	-102 875.60	2	481	267.84	R373	-101 872.97	2	486	796.80
L374	-102 841.54	2	481	140.46	R374	-101 971.75	2	486	493.55
L375	-102 837.06	2	481	050.86	R375	-102 069.28	2	486	008.76
L376	-102 833.54	2	480	932.45	R376	-102 152.30	2	485	667.56
L377	-102 837.99	2	480	870.32	R377	-102 300.30	2	485	054.64
L378	-102 845.90	2	480	784.54	R378	-102 322.83	2	484	962.83
L379	-102 914.32	2	480	576.49	R379	-102 401.40	2	484	654.10
L380	-102 969.94	2	480	467.82	R380	-102 591.88	2	484	118.68
L381	-102 995.90	2	480	422.77	R381	-102 729.53	2	483	816.72
L382	-102 995.10	2	480	421.44	R382	-102 756.19	2	483	760.29
L383	-103 016.42	2	480	387.09	R383	-102 814.51	2	483	644.68
L384	-103 065.11	2	480	294.05	R384	-102 856.89	2	483	545.68
L385	-103 071.14	2	480	281.96	R385	-103 039.79	2	483	157.92
L386	-103 131.35	2	480	169.80	R386	-103 137.13	2	482	953.35
L387	-103 210.43	2	480	063.12	R387	-103 164.05	2	482	837.50
L388	-103 228.83	2	480	041.22	R388	-103 178.38	2	482	744.37
L389	-103 268.46	2	479	994.07	R389	-103 179.64	2	482	662.67
L390	-103 832.67	2	479	267.87	R390	-103 169.81	2	482	585.36
L391	-103 893.40	2	479	174.96	R391	-103 165.77	2	482	485.33
L392	-103 950.77	2	479	060.75	R392	-103 143.70	2	482	365.02
L393	-104 086.80	2	478	697.46	R393	-103 118.21	2	482	122.97
L394	-104 096.41	2	478	671.05	R394	-103 094.77	2	481	741.86
L395	-104 190.25	2	478	413.27	R395	-103 080.63	2	481	656.22
L396	-104 259.16	2	478	268.88	R396	-103 053.53	2	481	568.70
L397	-104 323.89	2	478	155.09	R397	-102 912.82	2	481	246.18
L398	-104 434.01	2	477	984.24	R398	-102 874.39	2	481	052.14
L399	-104 670.76	2	477	629.09	R399	-102 868.72	2	480	932.67
L400	-104 898.99	2	477	273.20	R400	-102 883.08	2	480	814.47
L401	-105 086.01	2	476	996.10	R401	-102 910.26	2	480	698.05
L402	-105 286.27	2	476	690.55	R402	-102 953.16	2	480	586.39
L403	-105 468.72	2	476	413.55	R403	-103 018.66	2	480	460.64
L404	-105 582.67	2	476	228.25	R404	-103 094.76	2	480	315.54
L405	-105 637.40	2	476	132.37	R405	-103 110.05	2	480	293.17
L406	-105 883.16	2	475	674.46	R406	-103 105.90	2	480	293.25
L407	-106 150.19	2	475	160.51	R407	-103 121.96	2	480	266.00
L408	-106 315.09	2	474	857.44	R408	-103 159.29	2	480	223.33
					Vel Sheet 35 Van of 39 P912/16				

PADRESERVE KOÖRDINATE / ROAD RESERVE CO-ORDINATES									
LINKERKANT/LEFT HAND SIDE					REGTERKANT/RIGHT HAND SIDE				
	Y		X	WG 29°		Y		X	
L409	-106 368.82	2	474 750.37		R409	-103 242.09	2	480 102.16	
L410	-106 409.41	2	474 669.98		R410	-103 264.85	2	480 058.14	
L411	-106 441.40	2	474 605.83		R411	-103 889.71	2	479 256.40	
L412	-106 455.74	2	474 579.83		R412	-103 930.79	2	479 197.11	
L413	-106 479.62	2	474 477.47		R413	-103 965.75	2	479 133.57	
L414	-106 491.42	2	474 426.87		R414	-104 119.12	2	478 727.86	
L415	-106 491.01	2	474 409.74		R415	-104 287.25	2	478 282.09	
L416	-106 489.42	2	474 343.59		R416	-104 448.32	2	478 029.59	
L417	-106 488.07	2	474 287.29		R417	-104 722.98	2	477 612.02	
L418	-106 487.04	2	474 244.24		R418	-105 653.73	2	476 191.48	
L419	-106 486.13	2	474 206.18		R419	-105 914.64	2	475 693.61	
L420	-106 454.88	2	474 047.70		R420	-106 501.68	2	474 577.50	
L421	-106 927.95	2	471 221.89		R421	-106 504.90	2	474 551.96	
L422	-106 764.22	2	470 813.69		R422	-106 539.18	2	474 308.81	
L423	-106 750.44	2	470 779.02		R423	-106 522.59	2	474 224.30	
L424	-106 712.67	2	470 702.31		R424	-106 519.77	2	474 209.95	
L425	-106 652.18	2	470 623.26		R425	-106 485.10	2	474 033.32	
L426	-106 446.94	2	470 375.87		R426	-106 900.51	2	471 062.81	
L427	-106 383.37	2	470 306.79		R427	-106 692.22	2	470 604.69	
L428	-106 293.11	2	470 228.77		R428	-106 617.00	2	470 517.45	
L429	-106 233.69	2	470 202.83		R429	-106 387.05	2	470 241.85	
L430	-106 165.62	2	470 187.15		R430	-106 311.74	2	470 193.36	
L431	-106 105.22	2	470 184.93		R431	-106 267.98	2	470 174.54	
L432	-106 097.12	2	470 184.25		R432	-106 208.02	2	470 156.39	
L433	-106 069.02	2	470 186.75		R433	-106 149.91	2	470 146.62	
L434	-105 690.37	2	470 214.69		R434	-106 083.69	2	470 148.49	
L435	-105 605.55	2	470 210.70		R435	-106 048.46	2	470 151.74	
L436	-105 565.06	2	470 208.80		R436	-105 904.24	2	470 162.37	
L437	-105 506.99	2	470 192.20		R437	-105 871.04	2	470 164.82	
L438	-105 449.13	2	470 175.65		R438	-105 761.35	2	470 172.91	
L439	-105 342.24	2	470 115.45		R439	-105 678.64	2	470 179.01	
L440	-105 252.76	2	470 032.42		R440	-105 650.52	2	470 178.15	
L441	-105 183.99	2	469 928.17		R441	-105 587.34	2	470 161.89	
L442	-105 091.22	2	469 730.41		R442	-105 514.98	2	470 133.41	
L443	-104 226.28	2	467 869.96		R443	-105 531.02	2	470 139.88	
L444	-103 767.77	2	466 883.72		R444	-105 440.40	2	470 103.29	
L445	-103 517.52	2	466 345.45		R445	-105 356.75	2	470 068.93	
L446	-103 516.44	2	466 342.97		R446	-105 344.87	2	470 064.05	
L447	-103 505.99	2	466 324.24		R447	-105 270.68	2	469 989.95	
L448	-103 248.04	2	465 757.62		R448	-105 217.99	2	469 910.31	
L449	-103 218.87	2	465 690.62		R449	-105 180.76	2	469 831.04	
L450	-103 028.16	2	465 082.20		R450	-105 136.94	2	469 737.81	
L451	-103 014.36	2	465 023.38		R451	-105 119.31	2	469 699.89	
L452	-102 907.29	2	464 672.15		R452	-105 057.21	2	469 566.32	
L453	-102 887.29	2	464 623.84		R453	-104 995.41	2	469 433.38	
L454	-102 877.43	2	464 574.84		R454	-104 931.54	2	469 296.01	
L455	-102 771.12	2	464 228.36		R455	-104 865.33	2	469 153.59	
L456	-102 763.40	2	464 197.10		R456	-104 797.37	2	469 007.41	
L457	-102 438.59	2	463 141.24		R457	-104 726.96	2	468 855.98	
L458	-102 341.55	2	462 839.22		R458	-104 653.95	2	468 698.93	
L459	-102 202.81	2	462 416.49		R459	-104 578.06	2	468 535.70	
					<div> <div>Vel Sheet</div> <div>36</div> <div>Van of</div> <div>39</div> </div> <div>P912/16</div>				

PADRESERWE KOÖRDINATE / ROAD RESERVE CO-ORDINATES									
LINKERKANT/LEFT HAND SIDE					REGTERKANT/RIGHT HAND SIDE				
	Y		X	WG 29°		Y		X	
L460	-102 137.69	2	462 241.19		R460	-104 499.65	2	468 367.03	
L461	-102 094.81	2	462 112.57		R461	-104 414.92	2	468 184.77	
L462	-102 004.58	2	462 034.12		R462	-104 332.70	2	468 007.95	
L463	-101 946.96	2	461 866.35		R463	-104 315.84	2	467 971.68	
L464	-101 982.99	2	461 791.77		R464	-104 265.43	2	467 863.24	
L465	-101 917.87	2	461 600.97		R465	-104 206.42	2	467 736.29	
L466	-101 788.61	2	461 241.46		R466	-104 145.28	2	467 604.81	
L467	-101 730.45	2	461 079.65		R467	-104 080.78	2	467 466.07	
L468	-101 727.35	2	461 069.99		R468	-104 014.13	2	467 322.68	
L469	-101 671.67	2	460 896.69		R469	-103 943.71	2	467 171.24	
L470	-101 616.00	2	460 723.38		R470	-103 867.75	2	467 007.85	
L471	-101 560.32	2	460 550.07		R471	-103 788.22	2	466 836.79	
L472	-101 514.54	2	460 407.54		R472	-103 533.33	2	466 288.53	
L473	-101 507.75	2	460 386.42		R473	-103 532.23	2	466 292.47	
L474	-101 449.67	2	460 218.92		R474	-103 325.00	2	465 843.06	
L475	-101 434.60	2	460 163.74		R475	-103 267.88	2	465 707.07	
L476	-101 399.82	2	460 087.75		R476	-103 229.42	2	465 589.23	
L477	-101 385.40	2	459 980.80		R477	-103 131.38	2	465 274.45	
L478	-101 391.48	2	459 945.44		R478	-103 131.59	2	465 265.23	
L479	-101 397.60	2	459 948.24		R479	-103 073.02	2	465 073.91	
L480	-101 412.81	2	459 907.00		R480	-103 014.47	2	464 882.58	
L481	-101 428.92	2	459 881.42		R481	-102 955.91	2	464 691.26	
L482	-101 431.46	2	459 869.61		R482	-102 897.35	2	464 499.93	
L483	-101 418.72	2	459 748.33		R483	-102 838.79	2	464 308.61	
L484	-101 388.57	2	459 709.40		R484	-102 803.79	2	464 211.46	
L485	-101 364.60	2	459 464.99		R485	-102 474.37	2	463 123.29	
L486	-101 402.51	2	459 444.66		R486	-102 377.65	2	462 825.73	
L487	-101 429.87	2	459 445.11		R487	-102 219.04	2	462 356.38	
L488	-101 446.80	2	459 441.52		R488	-102 177.31	2	462 228.18	
L489	-101 458.33	2	459 441.44		R489	-102 151.47	2	462 151.72	
L490	-101 458.31	2	459 439.98		R490	-102 227.37	2	462 122.44	
L491	-101 488.77	2	459 439.84		R491	-102 220.52	2	461 745.55	
L492	-101 488.70	2	459 376.57		R492	-102 203.11	2	461 677.73	
L493	-101 561.17	2	459 377.32		R493	-102 077.10	2	461 536.47	
L494	-101 581.60	2	459 398.67		R494	-102 017.30	2	461 557.64	
L495	-101 586.30	2	459 417.67		R495	-101 870.83	2	461 352.40	
L496	-101 587.35	2	459 458.74		R496	-101 779.98	2	461 093.18	
L497	-101 607.87	2	459 461.92		R497	-101 647.19	2	460 691.43	
L498	-101 611.47	2	459 392.76		R498	-101 564.33	2	460 408.18	
L499	-101 609.82	2	459 371.38		R499	-101 499.24	2	460 191.60	
L500	-101 618.99	2	459 340.61		R500	-101 485.82	2	460 196.56	
L501	-101 621.95	2	459 323.30		R501	-101 435.97	2	460 045.68	
L502	-101 626.26	2	459 315.62		R502	-101 434.99	2	459 965.33	
L503	-101 630.23	2	459 314.12		R503	-101 423.49	2	459 959.97	
L504	-101 638.33	2	459 315.34		R504	-101 435.24	2	459 926.37	
L505	-101 710.76	2	458 976.88		R505	-101 437.84	2	459 921.88	
A1	-101 425.56	2	459 488.81		R506	-101 444.27	2	459 917.52	
A2	-101 458.57	2	459 490.97		R507	-101 466.08	2	459 920.94	
A3	-101 457.64	2	459 505.23		R508	-101 467.77	2	459 921.01	
A4	-101 424.62	2	459 503.07		R509	-101 469.85	2	459 920.24	
B1	-101 487.67	2	459 498.56		R510	-101 466.74	2	459 912.83	
					<div> <div>Vel Sheet</div> <div>37</div> <div>Van of</div> <div>39</div> </div> <div>P912/16</div>				

PADRESERWE KOÖRDINATE / ROAD RESERVE CO-ORDINATES									
LINKERKANT/LEFT HAND SIDE					REGTERKANT/RIGHT HAND SIDE				
	Y	X	WG 29°			Y	X		
B2	-101 487.82	2 459 489.42		R511	-101 510.63	2 459 886.47			
B3	-101 491.36	2 459 489.48		R512	-101 513.47	2 459 889.36			
B4	-101 491.20	2 459 498.62		R513	-101 517.67	2 459 887.20			
C1	-101 487.57	2 459 474.43		R514	-101 517.64	2 459 883.72			
C2	-101 487.70	2 459 469.68		R515	-101 556.13	2 459 872.85			
C3	-101 491.88	2 459 469.80		R516	-101 558.18	2 459 875.07			
C4	-101 491.77	2 459 474.54		R517	-101 562.61	2 459 873.61			
D1	-101 504.11	2 459 488.50		R518	-101 562.85	2 459 870.98			
D2	-101 504.36	2 459 470.26		R519	-101 598.51	2 459 860.43			
D3	-101 516.36	2 459 470.38		R520	-101 611.29	2 459 851.54			
D4	-101 516.30	2 459 474.61		R521	-101 617.50	2 459 840.07			
D5	-101 520.27	2 459 474.69		R522	-101 618.92	2 459 831.82			
D6	-101 520.31	2 459 470.46		R523	-101 621.15	2 459 658.41			
D7	-101 555.87	2 459 470.90		R524	-101 627.85	2 459 607.56			
D8	-101 555.65	2 459 489.03		R525	-101 628.96	2 459 530.01			
D9	-101 520.08	2 459 488.59		R526	-101 632.48	2 459 519.50			
D10	-101 520.26	2 459 476.25		R527	-101 651.86	2 459 489.17			
D11	-101 516.28	2 459 476.29		R528	-101 654.80	2 459 472.70			
D12	-101 516.10	2 459 488.63		R529	-101 646.44	2 459 438.53			
E1	-101 527.76	2 459 466.53		R530	-101 640.24	2 459 439.51			
E2	-101 528.63	2 459 410.12		R531	-101 629.88	2 459 425.43			
E3	-101 548.63	2 459 410.42		R532	-101 628.31	2 459 420.96			
E4	-101 547.94	2 459 466.84		R533	-101 637.95	2 459 418.18			
F1	-101 601.07	2 459 493.38		R534	-101 647.11	2 459 385.40			
F2	-101 598.42	2 459 477.07		R535	-101 658.33	2 459 324.94			
F3	-101 608.17	2 459 475.37		R536	-101 657.57	2 459 321.24			
F4	-101 611.01	2 459 491.64		R537	-101 654.89	2 459 318.26			
G1	-101 544.75	2 459 549.79		R538	-101 648.35	2 459 316.69			
G2	-101 545.35	2 459 496.04		R539	-101 719.95	2 458 980.55			
G3	-101 565.78	2 459 496.20		H21	-101 611.01	2 459 830.82			
G4	-101 565.27	2 459 549.99		H22	-101 607.72	2 459 839.59			
H1	-101 449.65	2 459 912.95		H23	-101 603.02	2 459 844.60			
H2	-101 446.62	2 459 912.36		H24	-101 596.30	2 459 848.98			
H3	-101 443.65	2 459 910.26		H25	-101 582.87	2 459 852.79			
H4	-101 440.59	2 459 906.68		H26	-101 580.09	2 459 857.58			
H5	-101 439.06	2 459 902.11		H27	-101 575.92	2 459 857.90			
H6	-101 439.06	2 459 898.51		H28	-101 570.58	2 459 853.64			
H7	-101 441.97	2 459 894.76		H29	-101 568.27	2 459 845.44			
H8	-101 503.22	2 459 822.50		H30	-101 551.57	2 459 850.03			
H9	-101 516.45	2 459 818.68		H31	-101 552.66	2 459 854.84			
H10	-101 516.04	2 459 817.21		H32	-101 548.34	2 459 855.97			
H11	-101 521.47	2 459 815.72		H33	-101 547.02	2 459 851.32			
H12	-101 521.88	2 459 816.95		H34	-101 527.29	2 459 856.62			
H13	-101 533.10	2 459 814.02		H35	-101 529.45	2 459 863.58			
H14	-101 568.99	2 459 803.98		H36	-101 529.76	2 459 871.48			
H15	-101 587.23	2 459 795.55		H37	-101 517.56	2 459 870.01			
H16	-101 604.63	2 459 777.58		H38	-101 498.15	2 459 857.78			
H17	-101 608.58	2 459 775.78		H39	-101 496.18	2 459 860.82			
H18	-101 614.78	2 459 778.91		H40	-101 493.26	2 459 859.09			
H19	-101 613.59	2 459 813.88		H41	-101 491.47	2 459 861.96			
H20	-101 611.63	2 459 820.67		H42	-101 488.32	2 459 860.04			
					Vel Sheet	38	Van of	39	P912/16

This gazette is also available free online at www.gpwonline.co.za