

DEPARTMENT OF TRANSPORT

NO. 353

24 MARCH 2016

**THE SOUTH AFRICAN NATIONAL ROADS
AGENCY SOC LIMITED**

Registration No: 1998/009584/30

**DECLARATION AMENDMENT OF NATIONAL ROAD R61 SECTION 7 AND DECLARATION OF
EXISTING ROAD THROUGH THE TOWNSHIP OF MTHATHA AS PART OF NATIONAL ROAD R61
SECTION 7**

AMENDMENT OF DECLARATION No. 1044 OF 2012

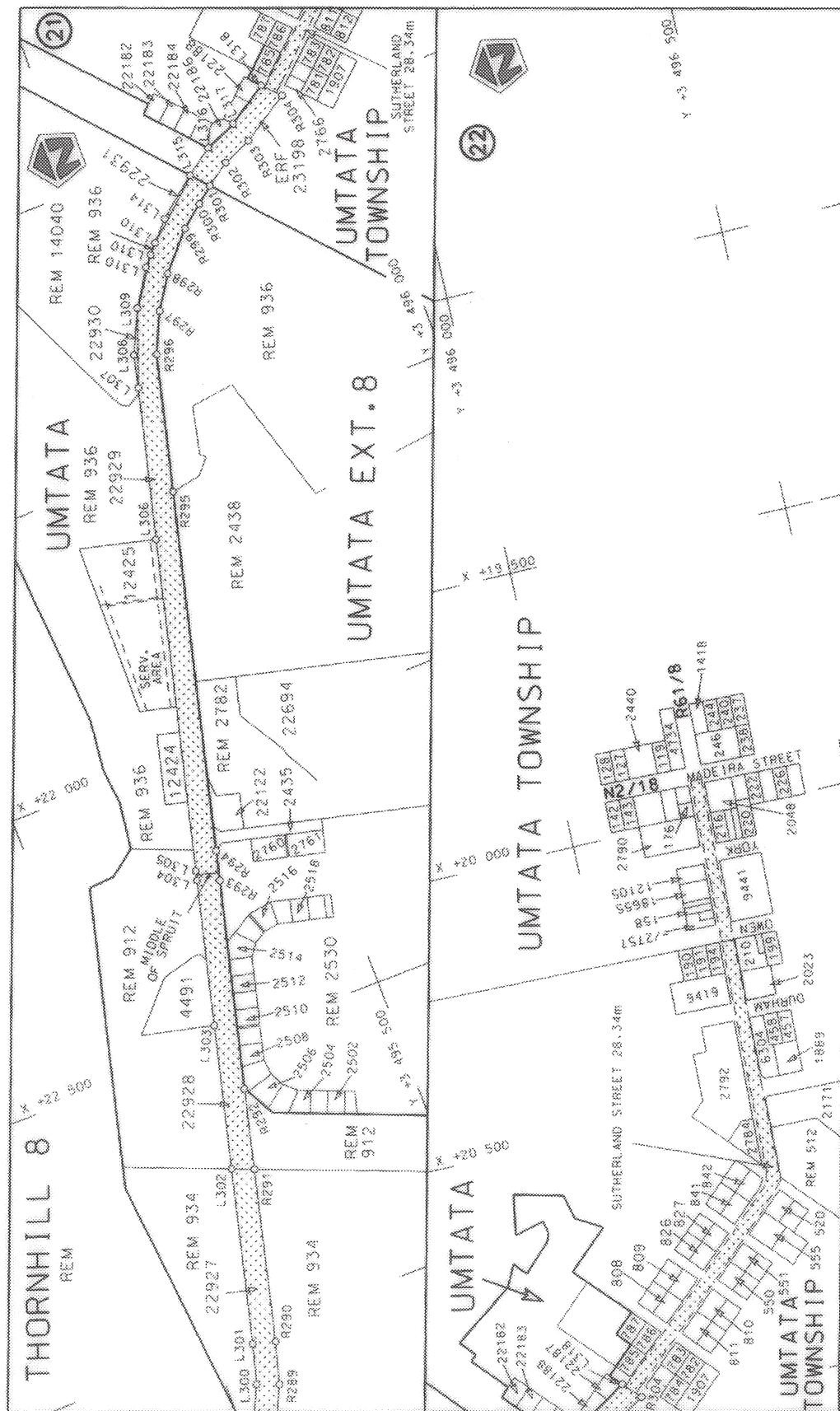
- i) By virtue of Section 40 (1)(b) of The South African National Roads Agency Limited and National Roads Act, 1998 (Act No. 7 of 1998), I hereby amend Declaration No. 1044 of 2012 by substituting sheets 8, 14 and 15 thereof, with the subjoined sheets 8A, 14A and 15A of Plan No. P787/10.
- ii) By virtue of Section 40 (1)(a) of the said Act, I hereby declare the section of the road, commencing from points L318 and R304 on sheet 8A of Plan No. P787/10, from where it proceeds in a general easterly direction along street known as Sutherland Street at the time of declaration, up to its intersection with street known as Madeira Street at time of declaration in Mthatha where it terminates, as a National Road.

This declaration includes the roadway, surfaced and gravel shoulders and angled or parallel surfaced parking bays which form part of the roadway, but excludes kerbs, channels and sidewalks along the said route.

(National Road R61 Section 7: Langdon - Mthatha)



MINISTER OF TRANSPORT



Vel
Sheet 8A of
Plan P787/10

steldie padreserwe voor van in gedeelte
represents the road reserve of a portion
van Nasionale Roete R61 Sekse
of National Route Section 7



Die figuur getoon
The figure shown

Die Suid Afrikaanse Nasionale Padagentskap Beperk
The South African National Roads Agency Limited

PADRESERWE KOÖRDINATE / ROAD RESERVE CO-ORDINATES						
LINKERKANT/LEFT HAND SIDE				REGTERKANT/RIGHT HAND SIDE		
	Y	X	WG 29°		Y	X
L256	27 859.68	3 493 666.56		R256	27 219.17	3 494 135.40
L257	27 811.40	3 493 695.47		R257	27 139.36	3 494 154.76
L258	27 726.61	3 493 752.54		R258	27 113.98	3 494 160.92
L259	27 677.10	3 493 794.24		R259	27 053.98	3 494 175.47
L260	27 574.91	3 493 893.47		R260	27 034.34	3 494 180.23
L261	27 454.69	3 493 983.60		R261	26 945.23	3 494 201.84
L262	27 300.81	3 494 064.27		R262	26 845.05	3 494 229.75
L263	27 208.37	3 494 102.00		R263	26 709.26	3 494 266.65
L264	27 130.38	3 494 120.92		R264	26 319.95	3 494 362.24
L265	27 105.74	3 494 126.89		R265	26 233.70	3 494 385.43
L266	27 044.85	3 494 141.66		R266	26 009.26	3 494 445.78
L267	27 025.06	3 494 146.46		R267	25 866.91	3 494 481.41
L268	26 936.98	3 494 167.83		R268	25 753.13	3 494 507.64
L269	26 880.14	3 494 189.15		R269	25 593.74	3 494 545.21
L270	26 711.63	3 494 232.99		R270	25 483.28	3 494 571.26
L271	26 579.91	3 494 257.24		R271	25 479.32	3 494 572.25
L272	26 572.63	3 494 265.50		R272	25 180.76	3 494 586.50
L273	26 421.39	3 494 304.12		R273	24 583.58	3 494 580.96
L274	26 312.75	3 494 331.87		R274	24 031.76	3 494 575.81
L275	26 000.68	3 494 411.85		R275	23 744.11	3 494 570.86
L276	25 858.76	3 494 447.40		R276	23 661.54	3 494 575.37
L277	25 745.33	3 494 473.50		R277	23 600.84	3 494 589.23
L278	25 736.52	3 494 476.79		R278	23 510.43	3 494 637.87
L279	25 599.27	3 494 508.53		R279	23 490.80	3 494 641.69
L280	25 471.42	3 494 538.10		R280	23 462.01	3 494 674.14
L281	25 179.59	3 494 546.54		R281	23 430.48	3 494 709.89
L282	25 166.65	3 494 546.42		R282	23 407.28	3 494 735.64
L283	24 605.55	3 494 541.18		R283	23 345.49	3 494 843.64
L284	24 032.25	3 494 535.82		R284	23 306.92	3 494 910.55
L285	23 744.76	3 494 530.87		R285	23 281.51	3 494 948.85
L286	23 718.22	3 494 529.07		R286	23 245.33	3 494 990.68
L287	23 653.47	3 494 533.74		R287	23 223.38	3 495 010.41
L288	23 603.80	3 494 545.66		R288	23 173.76	3 495 053.93
L289	23 565.49	3 494 559.35		R289	23 100.14	3 495 088.80
L290	23 489.24	3 494 601.25		R290	23 027.06	3 495 108.80
L291	23 465.44	3 494 619.10		R291	22 730.24	3 495 181.56
L292	23 381.89	3 494 713.15		R292	22 591.21	3 495 215.64
L293	23 316.04	3 494 826.64		R293	22 231.50	3 495 305.09
L294	23 277.51	3 494 893.54		R294	22 179.76	3 495 317.90
L295	23 255.82	3 494 926.59		R295	21 555.88	3 495 472.82
L296	23 219.63	3 494 968.41		R296	21 318.36	3 495 531.97
L297	23 190.61	3 494 994.08		R297	21 249.05	3 495 564.17
L298	23 174.25	3 495 005.59		R298	21 192.54	3 495 600.57
L299	23 152.63	3 495 019.68		R299	21 129.48	3 495 657.01
L300	23 086.20	3 495 051.15		R300	21 098.25	3 495 696.42
L301	23 017.04	3 495 070.07		R301	21 075.41	3 495 725.24
L302	22 715.06	3 495 144.31		R302	21 047.37	3 495 765.30
L303	22 467.48	3 495 205.18		R303	21 026.08	3 495 816.69
L304	22 207.14	3 495 269.84		R304	20 273.22	3 495 899.65
L305	22 200.28	3 495 271.54				
L306	21 624.00	3 495 414.65				
				Vel Sheet	14A Van of 15	P787/10

This gazette is also available free online at www.gpwnonline.co.za