

## DEPARTMENT OF TRANSPORT

NO. 341

23 MARCH 2016

**THE SOUTH AFRICAN NATIONAL ROADS  
AGENCY SOC LIMITED**

Registration No: 1998/009584/30

**DECLARATION AMENDMENT OF NATIONAL ROAD N1 SECTION 10X****AMENDMENT OF DECLARATION No. 1322 OF 1989**

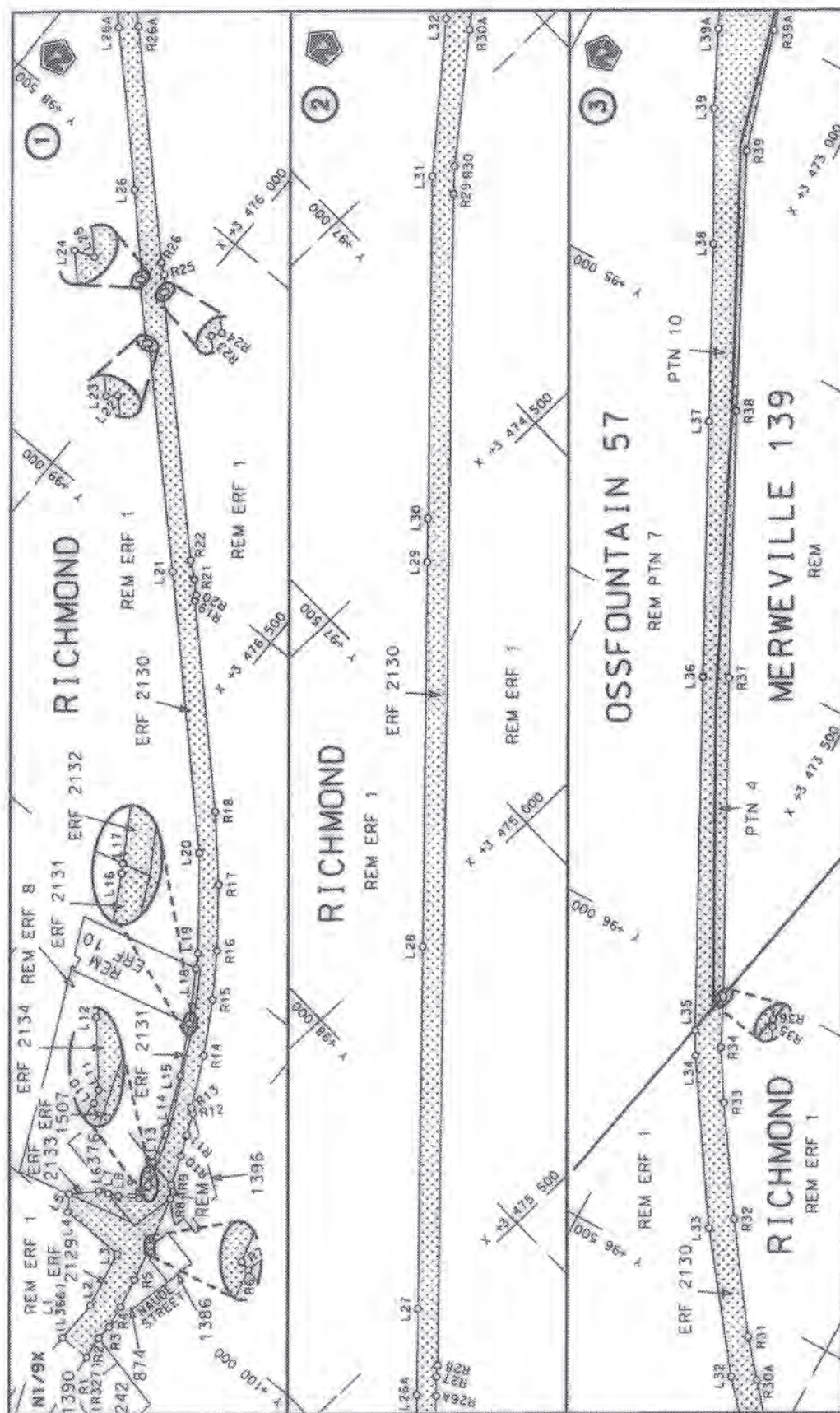
By virtue of section 40 (1)(b) of the South African National Roads Agency Limited and National Roads Act, 1998 (Act No. 7 of 1998), I hereby amend Declaration No. 1322 of 1989, Schedule paragraph (1), by substituting the section of the route from Erf 2129 Richmond to Erf 1616 Hanover, with subjoined sheets 1 to 13 of Plan P549/05.

(National Road N1 Section 10X: Richmond – Hanover)



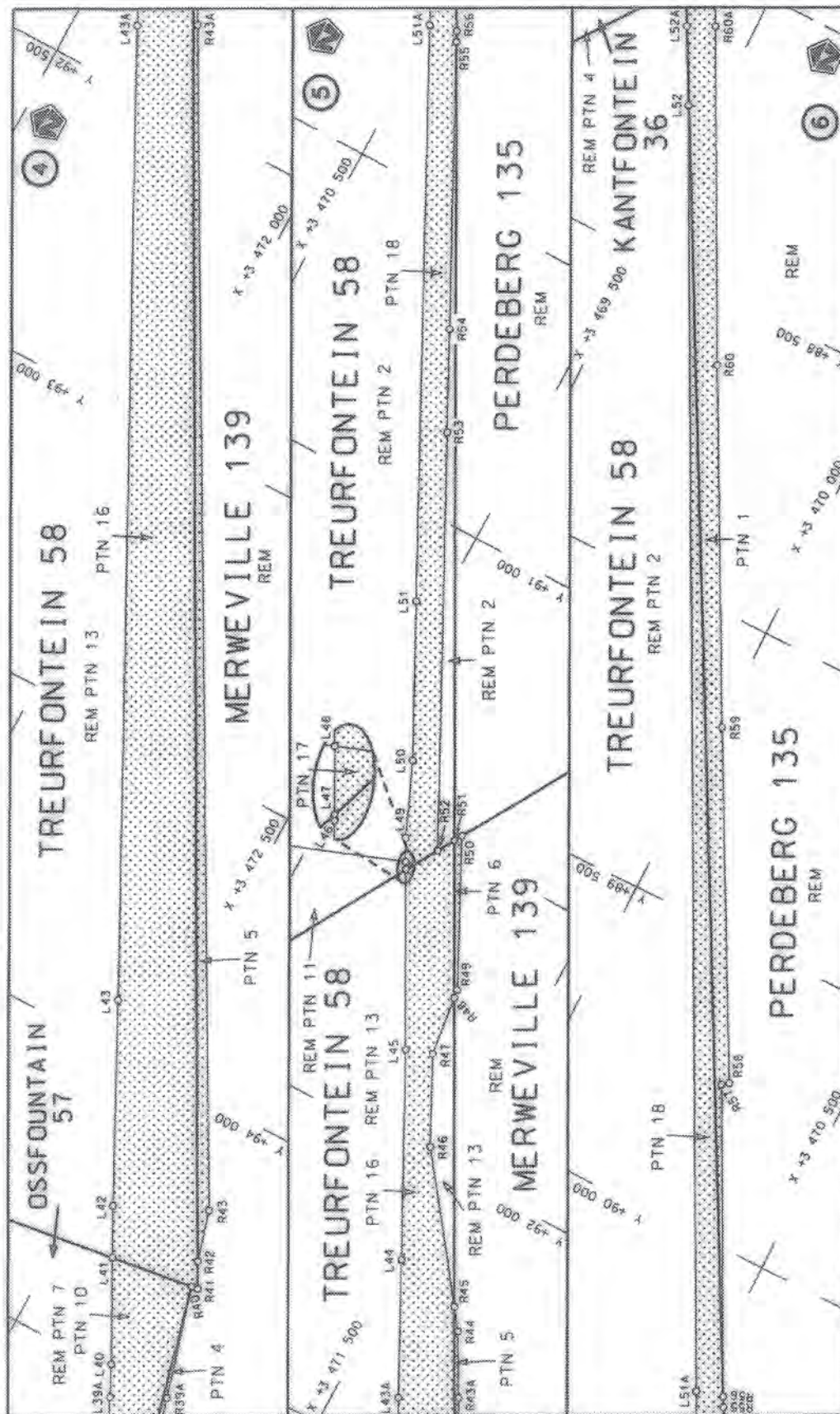
---


MINISTER OF TRANSPORT



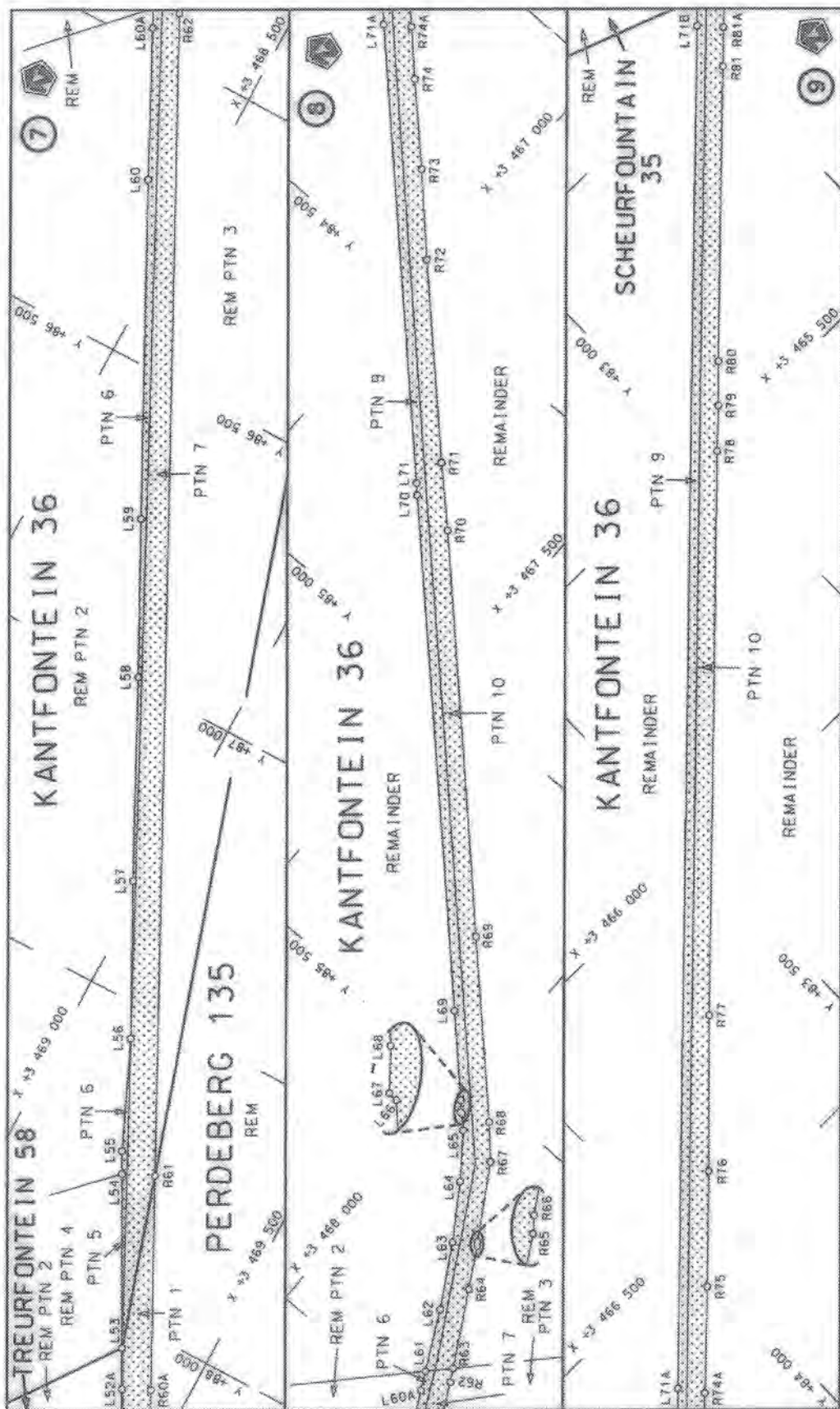
Die Suid Afrikaanse Nasionale Padagentskap Beperk The South African National Roads Agency Limited	Die figuur getoon The figure shown	stelde die padreserwe voor van 'n gedeelte represents the road reserve of a portion van Nasionale Roete N1 of National Route N1 Section	Val Sheet 1 of 13
		10X	Plan P549/05





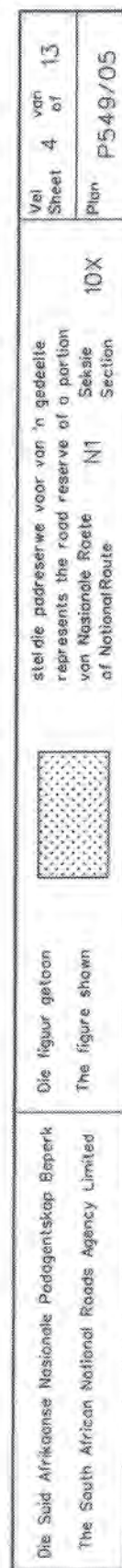
Die Suid-Afrikaanse Nasionale Padagentskap Bepark The South African National Roads Agency Limited	Die figuur getoon The figure shown		stelsel padreserwe voor van 'n gedeelte represents the road reserve of a portion van Nasionale Roete N1 of National Route	Vel Sheet 2 of 13 Plan P549/05
--	---------------------------------------	---	--	---



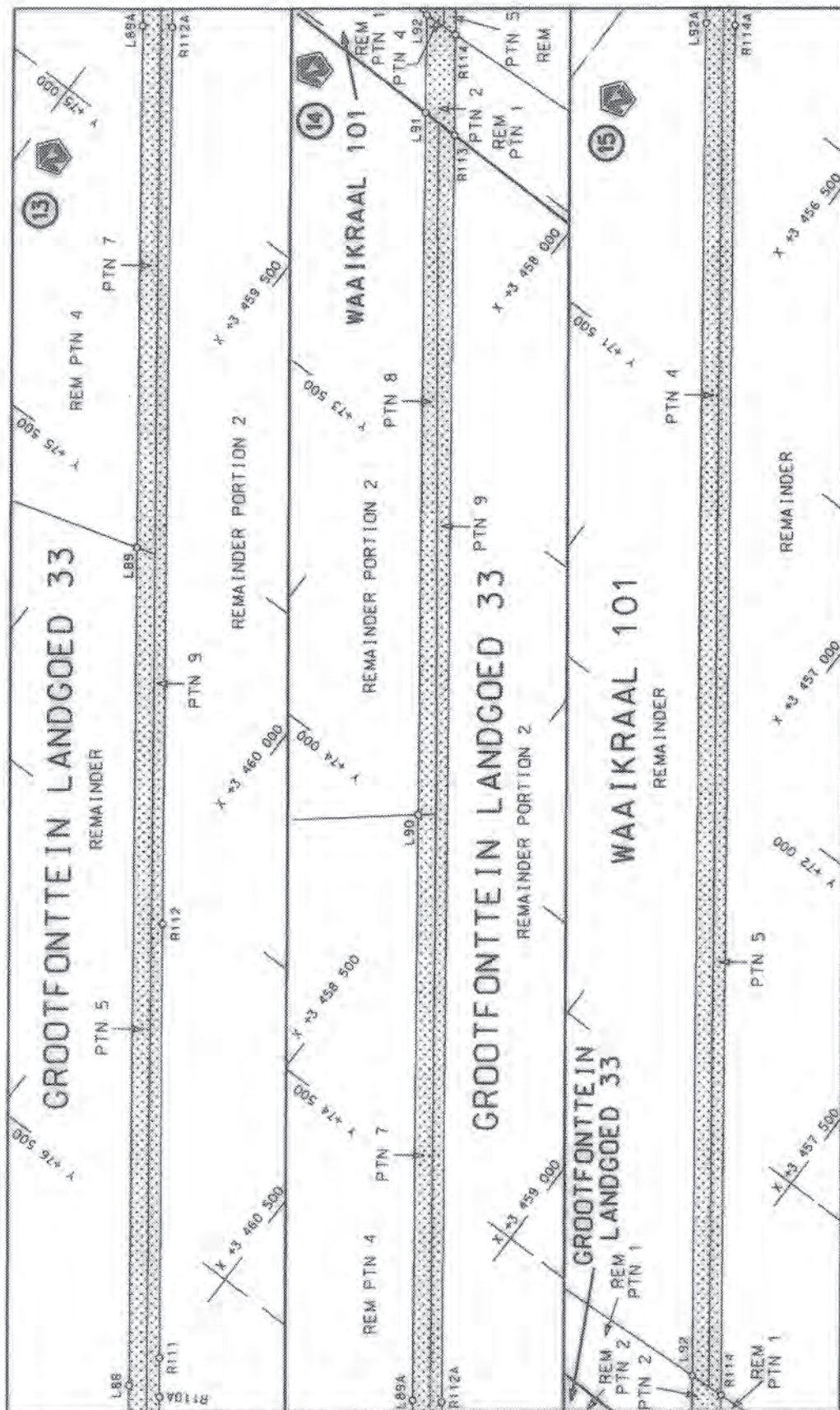


Die Suid Afrikaanse Nasionale Padagentskap Beperk The South African National Roads Agency Limited	Die figuur getoon The figure shown	stiel die padreserwe voor van 'n gedeelte represents the road reserve of a portion van Nasionale Roete of National Route	10X N1 Section	Val Sheet 3 of 13	Plan p549/05
--	---------------------------------------	---	----------------------	-------------------------	-----------------

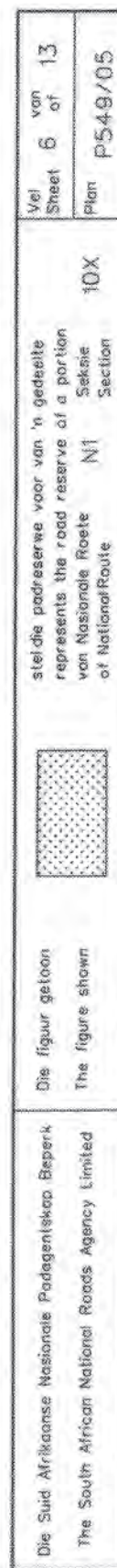




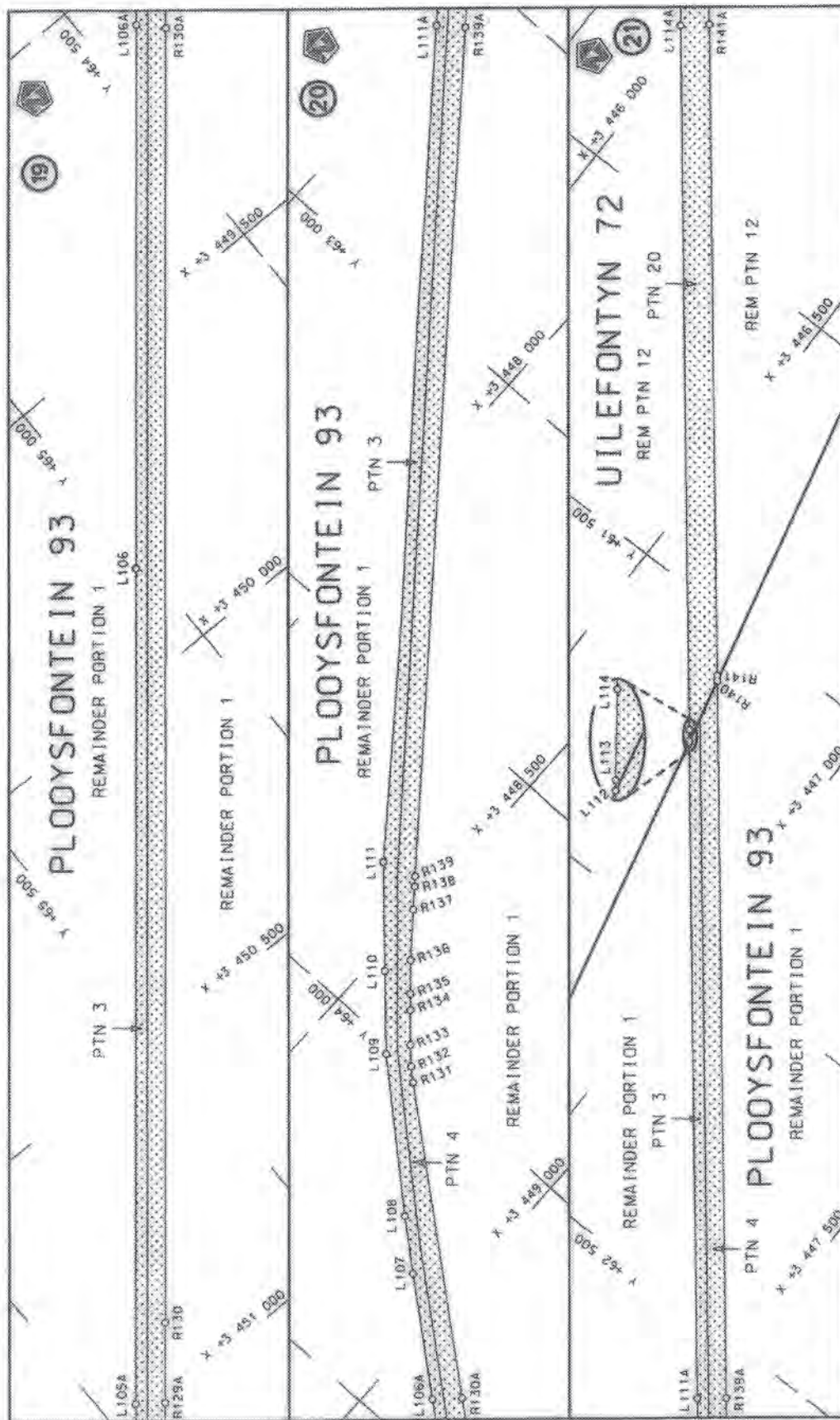




Die Suid Afrikaanse Nasionale Padagentskap Bepoort The South African National Roads Agency Limited	Die figuur getoon The figure shown		stelde padreserwe voor van 'n gedeelte represents the road reserve of a portion van Nasionale Roete N1 of National Route	10X	Vel Sheet 5 of 13	Plan P549/05
---	---------------------------------------	---	---	-----	----------------------	--------------

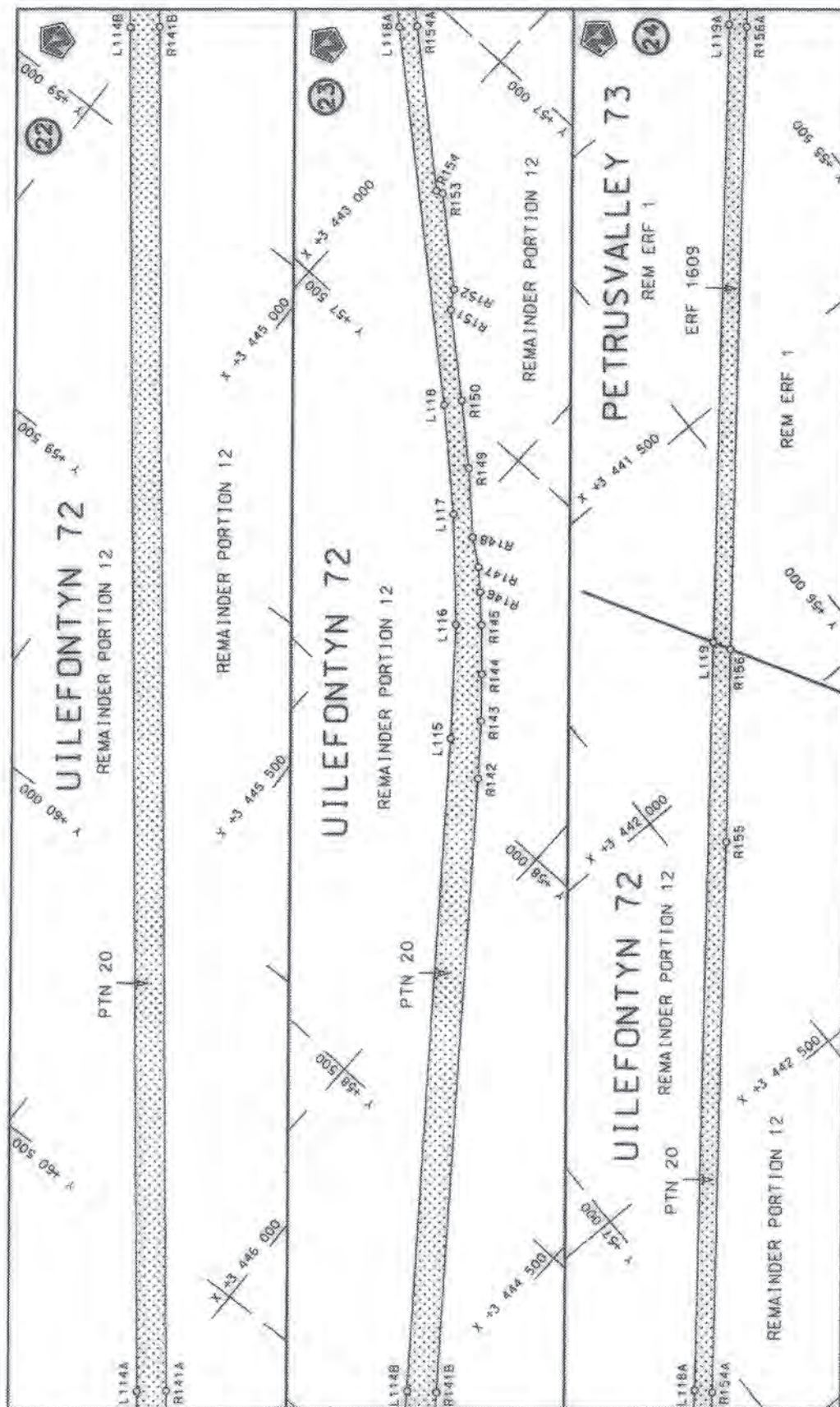




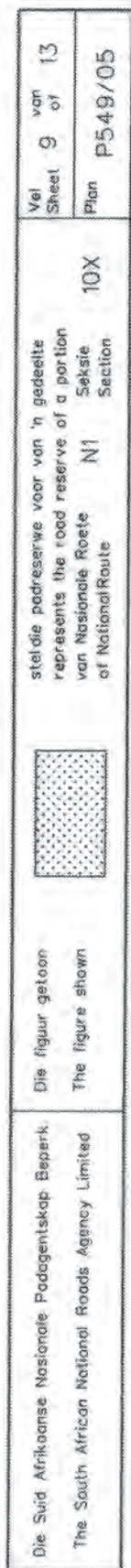


Die Suid-Afrikaanse Nasionale Padagentskap Beperk The South African National Roads Agency Limited	Die figuur getoon The figure shown	stel die padreserwe voor van 'n gedeelte represents the road reserve of a portion van Nasionale Roete of National Route	N1 Section	10X	Plan P549/05	Vel Sheet 7 of 13	P549/05
--	---------------------------------------	--	---------------	-----	--------------	----------------------	---------





Die Suid Afrikaanse Nasionale Padagentskap Bepoort The South African National Roads Agency Limited	Die figuur getoon The figure shown	stelde padreserwe voor van 'n gedeelte represents the road reserve of a portion van Nasionale Roete of National Route	N1 Section	10X	Plan P549/05	Vel Sheet 8 of 13
---	---------------------------------------	--	---------------	-----	--------------	----------------------





PADRESERWE KOÖRDINATE / ROAD RESERVE CO-ORDINATES									
LINKERKANT/LEFT HAND SIDE					REGTERKANT/RIGHT HAND SIDE				
	Y	X	WG 25°			Y	X		
L1	100 173.81	3 477 006.53		R1	100 172.81	3 477 061.24			
L2	100 098.64	3 477 007.99		R2	100 132.89	3 477 056.62			
L3	99 998.63	3 476 986.74		R3	100 106.65	3 477 058.67			
L4	99 997.09	3 476 871.18		R4	100 066.65	3 477 051.29			
L5	99 971.36	3 476 852.79		R5	100 014.23	3 477 039.42			
L6	99 934.23	3 476 890.68		R6	99 951.38	3 477 022.27			
L7	99 926.70	3 476 906.28		R7	99 951.15	3 477 021.14			
L8	99 918.76	3 476 922.71		R8	99 864.68	3 476 994.67			
L9	99 898.54	3 476 952.92		R9	99 845.81	3 476 980.76			
L10	99 873.45	3 476 951.10		R10	99 795.82	3 476 960.83			
L11	99 870.53	3 476 950.00		R11	99 760.50	3 476 945.20			
L12	99 858.60	3 476 939.23		R12	99 724.52	3 476 929.25			
L13	99 835.25	3 476 930.77		R13	99 718.32	3 476 920.23			
L14	99 774.53	3 476 908.75		R14	99 634.48	3 476 877.96			
L15	99 687.82	3 476 868.50		R15	99 548.23	3 476 826.80			
L16	99 607.69	3 476 822.20		R16	99 477.12	3 476 776.57			
L17	99 607.46	3 476 822.05		R17	99 386.35	3 476 704.32			
L18	99 524.72	3 476 768.64		R18	99 290.79	3 476 616.16			
L19	99 502.00	3 476 753.98		R19	99 027.49	3 476 348.93			
L20	99 364.68	3 476 641.39		R20	99 018.85	3 476 344.48			
L21	99 013.48	3 476 286.32		R21	98 999.30	3 476 324.53			
L22	98 729.39	3 475 995.37		R22	98 977.94	3 476 297.64			
L23	98 732.92	3 475 991.54		R23	98 645.04	3 475 956.65			
L24	98 653.15	3 475 909.98		R24	98 640.92	3 475 959.26			
L25	98 651.38	3 475 914.34		R25	98 619.88	3 475 937.50			
L26	98 537.87	3 475 802.07		R26	98 607.14	3 475 920.40			
L27	98 229.82	3 475 488.02		R27	98 289.32	3 475 597.54			
L28	97 781.41	3 475 031.19		R28	98 274.18	3 475 584.98			
L29	97 305.92	3 474 544.89		R29	96 823.23	3 474 107.10			
L30	97 251.91	3 474 490.73		R30	96 788.28	3 474 073.10			
L31	96 828.84	3 474 058.55		R31	96 543.68	3 473 866.74			
L32	96 619.80	3 473 874.21		R32	96 373.30	3 473 745.19			
L33	96 408.53	3 473 713.87		R33	96 200.93	3 473 630.54			
L34	96 152.25	3 473 546.74		R34	96 118.52	3 473 579.05			
L35	96 113.03	3 473 524.32		R35	96 039.10	3 473 540.73			
L36	95 558.67	3 473 236.52		R36	96 036.17	3 473 539.19			
L37	95 156.96	3 473 029.18		R37	95 538.58	3 473 277.87			
L38	94 878.49	3 472 885.74		R38	95 117.91	3 473 063.25			
L39	94 668.08	3 472 771.49		R39	94 706.48	3 472 858.30			
L40	94 488.96	3 472 684.90		R40	94 303.36	3 472 744.34			
L41	94 322.78	3 472 597.69		R41	94 301.88	3 472 755.18			
L42	94 242.26	3 472 555.43		R42	94 259.53	3 472 732.10			
L43	93 919.54	3 472 391.29		R43	94 171.09	3 472 707.40			
L44	92 178.14	3 471 492.65		R44	92 241.76	3 471 640.17			
L45	91 849.79	3 471 322.93		R45	92 207.13	3 471 614.19			
L46	91 571.58	3 471 171.25		R46	91 978.71	3 471 442.80			
L47	91 570.51	3 471 170.67		R47	91 833.21	3 471 367.78			
L48	91 558.73	3 471 164.27		R48	91 729.32	3 471 353.93			
L49	91 522.07	3 471 144.36		R49	91 714.22	3 471 351.91			
L50	91 396.65	3 471 089.28		R50	91 472.30	3 471 229.20			
L51	91 147.43	3 470 960.78		R51	91 485.64	3 471 221.20			
					Vel Sheet	10	Van of	13	P549/05



PADRESERWE KOÖRDINATE / ROAD RESERVE CO-ORDINATES						
LINKERKANT/LEFT HAND SIDE				REGTERKANT/RIGHT HAND SIDE		
	Y	X	WG 25°		Y	X
L52	88 232.12	3 469 456.49		R52	91 515.05	3 471 204.11
L53	88 045.54	3 469 356.19		R53	90 859.98	3 470 865.95
L54	87 775.09	3 469 209.88		R54	90 698.19	3 470 782.33
L55	87 738.88	3 469 190.34		R55	90 249.42	3 470 550.53
L56	87 557.49	3 469 108.81		R56	90 232.63	3 470 541.89
L57	87 310.36	3 468 979.14		R57	89 743.90	3 470 290.38
L58	86 988.94	3 468 815.44		R58	89 735.67	3 470 301.57
L59	86 739.93	3 468 685.79		R59	89 182.85	3 470 006.00
L60	86 207.25	3 468 409.83		R60	88 617.33	3 469 709.26
L61	85 937.55	3 468 272.75		R61	87 751.14	3 469 261.97
L62	85 838.29	3 468 220.49		R62	85 923.99	3 468 318.45
L63	85 734.36	3 468 159.46		R63	85 902.29	3 468 306.21
L64	85 644.18	3 468 098.86		R64	85 778.60	3 468 235.00
L65	85 572.53	3 468 043.76		R65	85 711.37	3 468 196.79
L66	85 551.38	3 468 023.77		R66	85 704.91	3 468 191.92
L67	85 551.03	3 468 019.37		R67	85 583.74	3 468 117.15
L68	85 534.83	3 468 006.10		R68	85 531.51	3 468 068.81
L69	85 422.34	3 467 893.74		R69	85 298.69	3 467 835.80
L70	84 775.20	3 467 245.32		R70	84 787.55	3 467 327.05
L71	84 759.87	3 467 230.53		R71	84 703.75	3 467 240.26
L72	82 446.75	3 464 914.06		R72	84 449.54	3 466 985.85
L73	81 948.94	3 464 416.51		R73	84 334.97	3 466 873.77
L74	81 873.11	3 464 346.58		R74	84 222.43	3 466 759.75
L75	81 786.25	3 464 270.09		R75	84 023.00	3 466 562.91
L76	81 580.87	3 464 097.58		R76	83 878.34	3 466 418.02
L77	81 412.64	3 463 966.78		R77	83 685.62	3 466 220.67
L78	81 330.66	3 463 923.27		R78	82 979.54	3 465 514.04
L79	81 302.12	3 463 896.32		R79	82 921.86	3 465 457.54
L80	81 284.08	3 463 882.96		R80	82 867.06	3 465 401.41
L81	81 174.54	3 463 800.28		R81	82 498.80	3 465 032.58
L82	80 847.81	3 463 554.39		R82	82 397.95	3 464 931.96
L83	79 083.66	3 462 229.32		R83	82 356.70	3 464 890.83
L84	78 871.52	3 462 069.98		R84	82 074.22	3 464 609.00
L85	78 718.08	3 461 955.29		R85	81 848.76	3 464 382.88
L86	78 561.57	3 461 837.38		R86	81 707.59	3 464 247.25
L87	76 920.78	3 460 604.89		R87	81 614.83	3 464 174.93
L88	76 750.24	3 460 477.25		R88	81 384.22	3 464 004.83
L89	75 567.40	3 459 589.00		R89	81 351.20	3 463 976.59
L90	74 004.16	3 458 415.08		R90	81 343.12	3 463 978.51
L91	73 012.45	3 457 670.36		R91	81 320.81	3 463 950.93
L92	72 874.81	3 457 566.99		R92	81 310.71	3 463 942.42
L93	70 400.98	3 455 709.29		R93	81 303.14	3 463 937.75
L94	70 141.84	3 455 505.05		R94	81 283.09	3 463 931.78
L95	70 087.86	3 455 456.33		R95	81 143.19	3 463 836.45
L96	70 024.14	3 455 396.78		R96	80 833.80	3 463 608.84
L97	69 664.68	3 455 053.58		R97	80 073.09	3 463 037.50
L98	69 434.14	3 454 833.57		R98	79 714.21	3 462 768.61
L99	68 144.52	3 453 602.85		R99	79 330.40	3 462 479.61
L100	67 986.67	3 453 450.83		R100	79 112.80	3 462 316.23
L101	67 896.23	3 453 355.84		R101	79 010.80	3 462 239.65
L102	67 779.69	3 453 222.33		R102	78 852.40	3 462 124.10
				Vel Sheet	11 Van of	13 P549/05



PADRESERWE KOÖRDINATE / ROAD RESERVE CO-ORDINATES									
LINKERKANT/LEFT HAND SIDE					REGTERKANT/RIGHT HAND SIDE				
	Y	X	WG 25°		Y	X			
L103	67 741.43	3 453 173.98		R103	78 845.53	3 462 119.19			
L104	67 713.83	3 453 140.08		R104	78 845.10	3 462 118.86			
L105	67 482.25	3 452 855.56		R105	78 562.47	3 461 903.01			
L106	65 017.38	3 449 833.52		R106	78 145.91	3 461 590.14			
L107	64 272.35	3 448 920.29		R107	77 794.35	3 461 327.43			
L108	64 206.20	3 448 842.12		R108	77 568.59	3 461 160.35			
L109	64 016.69	3 448 627.52		R109	77 410.87	3 461 038.22			
L110	63 909.82	3 448 527.99		R110	76 914.24	3 460 669.24			
L111	63 769.35	3 448 397.55		R111	76 679.69	3 460 491.37			
L112	61 715.59	3 446 762.60		R112	76 068.34	3 460 029.49			
L113	61 713.82	3 446 761.18		R113	73 013.09	3 457 735.13			
L114	61 697.80	3 446 749.19		R114	72 871.47	3 457 628.77			
L115	57 941.87	3 443 744.94		R115	70 438.76	3 455 801.89			
L116	57 786.80	3 443 615.69		R116	70 366.06	3 455 753.51			
L117	57 645.38	3 443 480.57		R117	70 339.68	3 455 734.78			
L118	57 513.19	3 443 337.72		R118	70 167.78	3 455 603.31			
L119	56 209.16	3 441 823.55		R119	70 060.23	3 455 502.42			
L120	54 491.03	3 439 828.84		R120	69 449.20	3 454 919.14			
L121	54 448.31	3 439 776.80		R121	67 892.35	3 453 432.98			
L122	54 397.08	3 439 707.76		R122	67 707.44	3 453 228.43			
L123	54 384.69	3 439 690.48		R123	67 705.46	3 453 226.25			
L124	54 377.01	3 439 680.58		R124	67 689.62	3 453 208.13			
L125	54 257.75	3 439 497.48		R125	67 616.87	3 453 108.13			
L126	54 501.02	3 439 288.52		R126	67 558.52	3 453 030.39			
L127	54 462.24	3 439 238.66		R127	66 850.61	3 452 162.37			
L128	54 431.95	3 439 264.55		R128	66 569.14	3 451 825.25			
L129	54 325.29	3 439 235.62		R129	66 345.26	3 451 542.69			
L130	54 291.74	3 439 263.33		R130	65 815.91	3 450 893.56			
L131	54 199.33	3 439 307.91		R131	64 022.56	3 448 696.01			
L132	54 108.10	3 439 351.92		R132	64 003.81	3 448 674.59			
L133	54 016.67	3 439 276.74		R133	63 976.77	3 448 648.37			
L134	54 010.78	3 439 271.90		R134	63 930.80	3 448 607.18			
L135	53 965.73	3 439 229.12		R135	63 909.41	3 448 587.89			
L136	53 917.82	3 439 191.02		R136	63 865.56	3 448 548.73			
L137	53 866.76	3 439 157.27		R137	63 796.39	3 448 492.53			
L138	53 810.91	3 439 126.75		R138	63 764.74	3 448 467.37			
L139	53 755.68	3 439 102.96		R139	63 750.72	3 448 455.90			
L140	53 731.33	3 439 094.45		R140	61 600.27	3 446 735.98			
L141	53 698.25	3 439 082.88		R141	61 592.53	3 446 729.79			
L142	53 638.40	3 439 068.29		R142	57 962.54	3 443 828.37			
L143	53 577.72	3 439 059.09		R143	57 884.16	3 443 763.50			
L144	53 498.26	3 439 053.86		R144	57 822.09	3 443 708.63			
L145	53 476.12	3 439 054.21		R145	57 757.91	3 443 649.01			
L146	53 422.32	3 439 055.97		R146	57 716.21	3 443 608.13			
				R147	57 685.26	3 443 576.44			
				R148	57 652.94	3 443 532.99			
				R149	57 567.28	3 443 445.42			
				R150	57 486.77	3 443 355.46			
				R151	57 381.34	3 443 233.11			
				R152	57 350.89	3 443 212.66			
				R153	57 238.77	3 443 083.02			
Vel Sheet					12	Van of	13	P549/05	

This gazette is also available free online at [www.gpwonline.co.za](http://www.gpwonline.co.za)