
GOVERNMENT NOTICES • GOEWERMENTSKENNISGEWINGS

DEPARTMENT OF TRANSPORT

NO. 339

23 MARCH 2016

THE SOUTH AFRICAN NATIONAL ROADS
AGENCY SOC LIMITED

Registration No: 1998/009584/30

DECLARATION AMENDMENT OF NATIONAL ROAD R730 SECTION 1

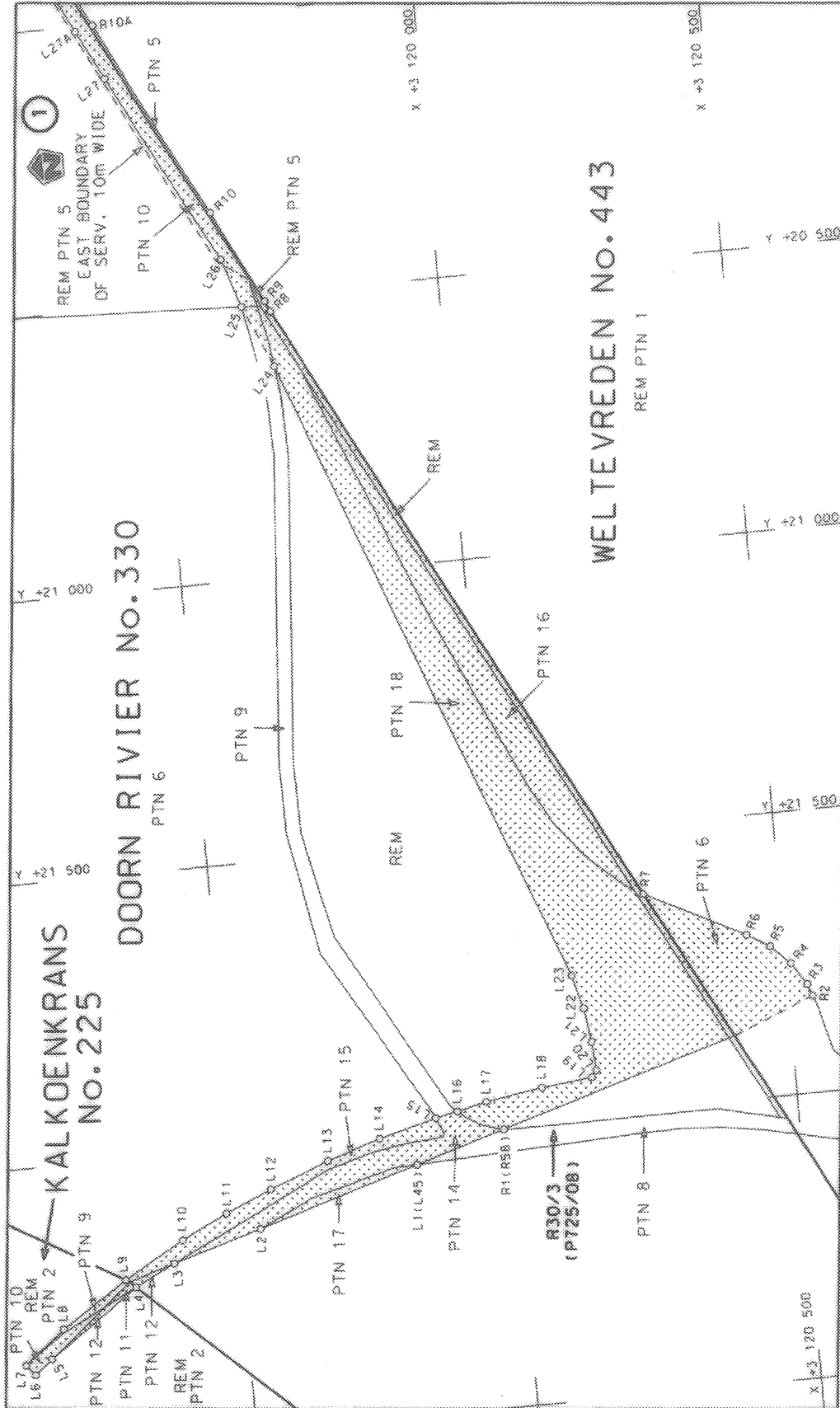
AMENDMENT OF DECLARATION No. 550 OF 2003

By virtue of section 40(1)(b) of the South African National Roads Agency Limited and the National Roads Act, 1998 (Act No. 7 of 1998), I hereby amend Declaration No. 550 of 2003 by substituting the Annexure paragraph (III), the section of the descriptive declaration of the route from the R30 Welkom turn-off up to the junction with R73, with the subjoined sheets 1 to 6 of Plan No. P774/09.

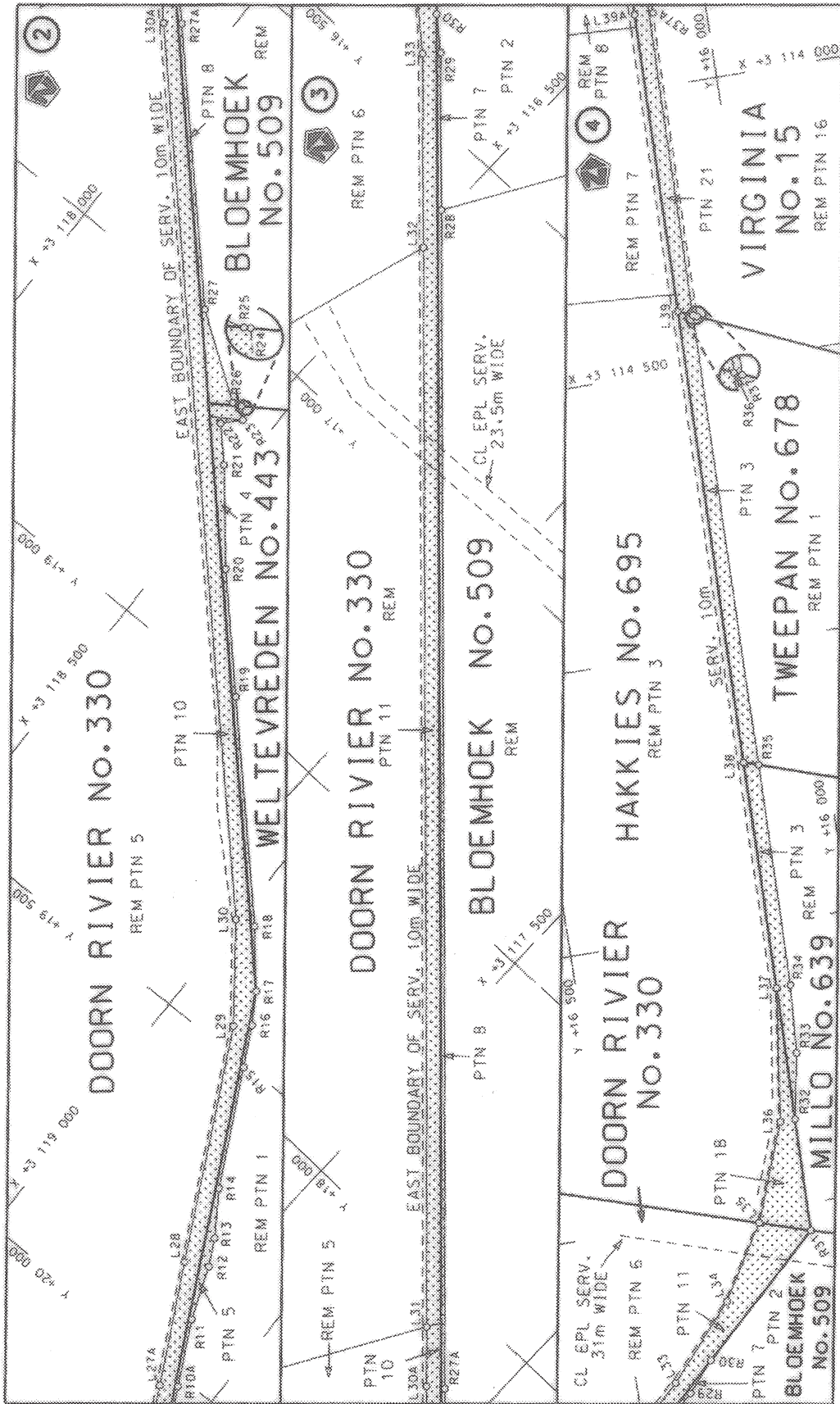
(National Road R730 Section 1: R30 Welkom Turn-off – R73 Junction)



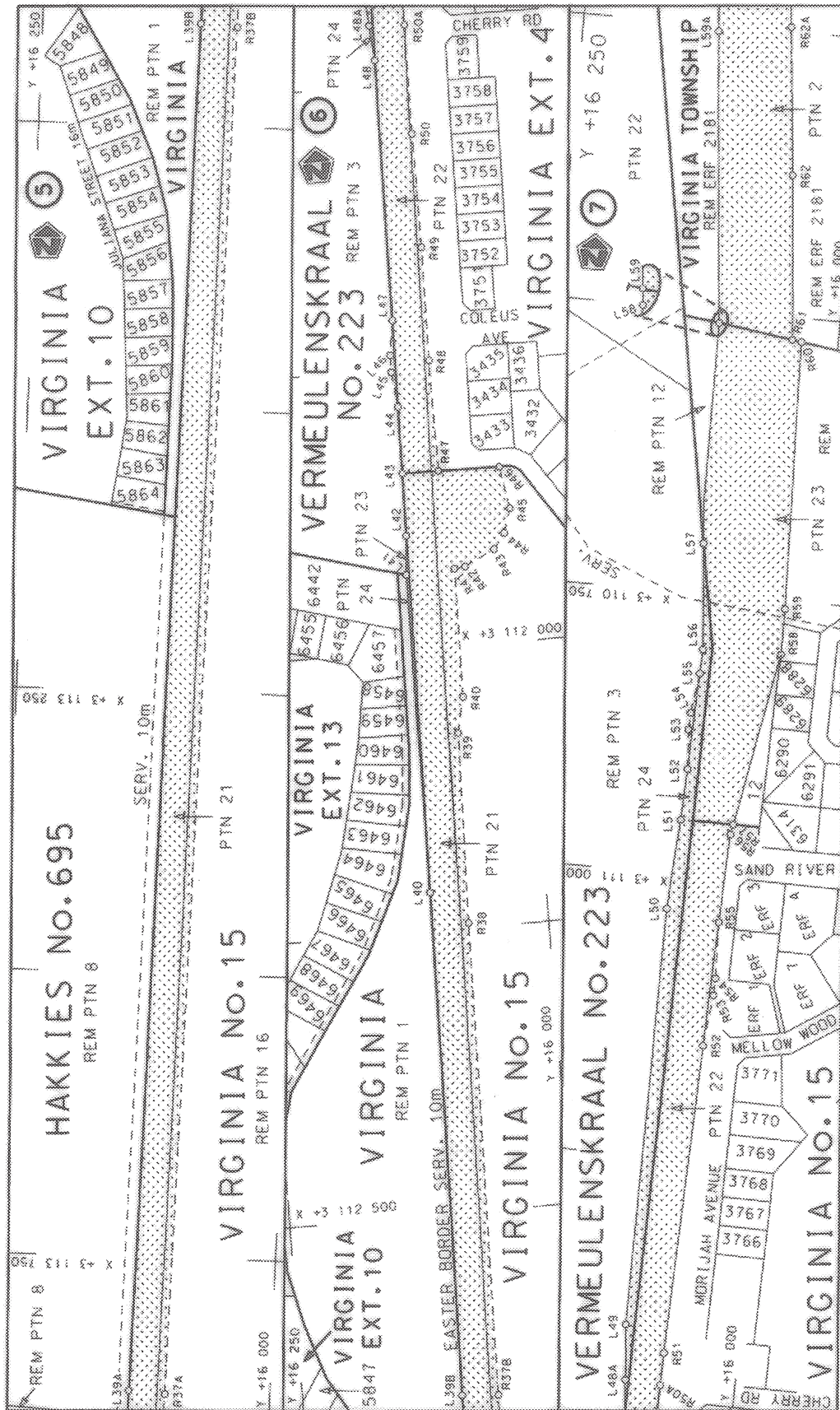
MINISTER OF TRANSPORT



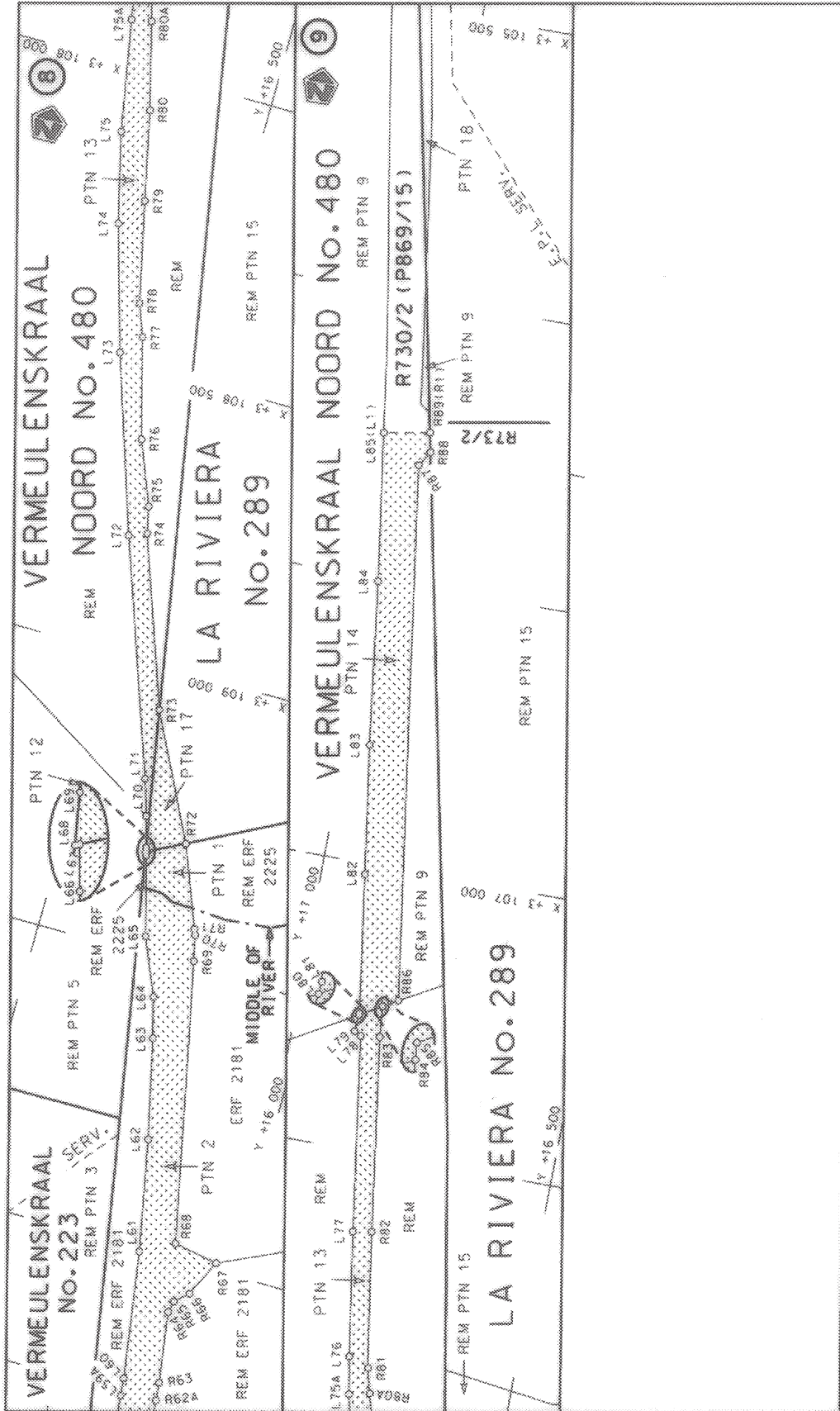
<p>Die Suid-Afrikaanse Nasionale Padagentskap Bepoerk The South African National Roads Agency Limited</p>	<p>Die figuur getoon The figure shown</p>	<p>stelt die padreserwe voor van 'n gedeelte represents the road reserve of a portion van Nasionale Raete R730 Saksie of National Route Section</p>	<p>Vel Sheet 1 van of 6 Plan P774/09</p>
---	---	---	--



<p>Die Suid Afrikaanse Nasionale Padagentskap Beperk The South African National Roads Agency Limited</p>	<p>Die figuur getoon The figure shown</p>	<p>stel die padreserwe voor van 'n gedeelte represents the road reserve of a portion van Nasionale Roete R730 of National Route Section</p>	<p>Van Sheet 2 of 6 Plan P774/09</p>
--	---	---	--



<p>Die Suid-Afrikaanse Nasionale Padagentskap Beperk The South African National Roads Agency Limited</p>	<p>Dis figuur getoon The figure shown:</p>		<p>stelsel padreserwe voor van 'n gedeelte represents the road reserve of a portion van Nasionale Route R730 of National Route</p>	<p>1</p>	<p>Seksie Section</p>	<p>R730</p>	<p>1</p>	<p>van of</p>	<p>3 of</p>	<p>van of</p>	<p>6 of</p>
--	--	--	--	----------	---------------------------	-------------	----------	-------------------	-----------------	-------------------	-----------------



<p>Die Suid Afrikaanse Nasionale Padagentskap Beperk The South African National Roads Agency Limited</p>	<p>Die figuur getoon The figure shown</p>	<p>stelt die padreserwe voor vir 'n gedeelte represents the road reserve of a portion van Nasionale Route R730 of National Route</p>	<p>Vel Sheet 4 van of 6 Plan P774/09</p>
--	---	--	--

PADRESERWE KOÖRDINATE / ROAD RESERVE CO-ORDINATES						
LINKERKANT/LEFT HAND SIDE				REGTERKANT/RIGHT HAND SIDE		
	Y	X	WG 27°		Y	X
L1	22 058.72	3 119 824.29	R1		22 011.41	3 119 982.37
L2	22 144.50	3 119 537.67	R2		21 829.26	3 120 542.45
L3	22 191.01	3 119 382.29	R3		21 808.04	3 120 534.58
L4	22 225.69	3 119 311.08	R4		21 768.70	3 120 508.90
L5	22 337.62	3 119 150.04	R5		21 735.20	3 120 474.84
L6	22 362.87	3 119 118.98	R6		21 710.93	3 120 435.95
L7	22 343.86	3 119 103.52	R7		21 622.22	3 120 262.96
L8	22 287.05	3 119 174.94	R8		20 530.17	3 119 697.62
L9	22 211.55	3 119 293.03	R9		20 511.07	3 119 689.64
L10	22 151.72	3 119 400.05	R10		20 347.70	3 119 608.11
L11	22 112.11	3 119 480.34	R11		19 908.30	3 119 381.78
L12	22 077.17	3 119 561.62	R12		19 817.37	3 119 346.44
L13	22 037.47	3 119 665.93	R13		19 772.15	3 119 322.91
L14	22 007.15	3 119 761.08	R14		19 699.20	3 119 274.03
L15	21 980.23	3 119 864.17	R15		19 505.25	3 119 172.94
L16	21 972.15	3 119 903.46	R16		19 438.69	3 119 138.06
L17	21 960.43	3 119 955.60	R17		19 386.98	3 119 105.81
L18	21 944.96	3 120 054.27	R18		19 298.61	3 119 031.58
L19	21 935.11	3 120 143.83	R19		19 000.00	3 118 749.13
L20	21 924.09	3 120 152.63	R20		18 834.18	3 118 592.26
L21	21 873.31	3 120 148.88	R21		18 691.50	3 118 473.92
L22	21 812.64	3 120 140.38	R22		18 637.41	3 118 422.53
L23	21 753.01	3 120 124.11	R23		18 608.55	3 118 449.62
L24	20 627.35	3 119 695.84	R24		18 590.41	3 118 432.65
L25	20 517.92	3 119 648.04	R25		18 590.82	3 118 432.03
L26	20 431.44	3 119 619.44	R26		18 595.59	3 118 416.60
L27	20 095.34	3 119 442.98	R27		18 497.84	3 118 274.04
L28	19 837.59	3 119 307.87	R28		16 610.37	3 116 488.75
L29	19 460.15	3 119 113.17	R29		16 408.52	3 116 297.76
L30	19 309.49	3 118 997.86	R30		16 363.64	3 116 246.11
L31	18 072.50	3 117 827.75	R31		16 154.97	3 116 048.82
L32	16 680.20	3 116 510.72	R32		16 152.29	3 115 849.65
L33	16 431.35	3 116 275.31	R33		16 131.26	3 115 734.81
L34	16 320.12	3 116 148.15	R34		16 123.88	3 115 614.00
L35	16 243.19	3 116 020.60	R35		16 118.44	3 115 217.44
L36	16 179.09	3 115 850.14	R36		16 107.55	3 114 408.43
L37	16 149.14	3 115 615.20	R37		16 100.71	3 114 411.50
L38	16 143.66	3 115 208.85	R38		16 071.65	3 112 245.51
L39	16 132.75	3 114 397.19	R39		16 067.38	3 112 076.72
L40	16 103.40	3 112 215.78	R40		16 060.53	3 112 045.08
L41	16 101.96	3 111 932.72	R41		16 059.13	3 111 930.95
L42	16 099.13	3 111 898.16	R42		16 049.60	3 111 929.64
L43	16 098.39	3 111 842.84	R43		16 022.65	3 111 916.51
L44	16 097.60	3 111 783.95	R44		16 012.22	3 111 903.00
L45	16 100.99	3 111 752.99	R45		16 005.60	3 111 881.42
L46	16 100.77	3 111 737.84	R46		16 012.08	3 111 844.02
L47	16 096.57	3 111 707.41	R47		16 066.51	3 111 843.25
L48	16 093.48	3 111 477.95	R48		16 067.06	3 111 745.20
L49	16 100.46	3 111 398.95	R49		16 065.58	3 111 645.20
L50	16 101.39	3 111 031.43	R50		16 065.77	3 111 545.19
L51	16 096.89	3 110 951.76	R51		16 064.77	3 111 420.89

Vel 5 Van 6
Sheet of

P774/09

PADRESERWE KOÖRDINATE / ROAD RESERVE CO-ORDINATES						
LINKERKANT/LEFT HAND SIDE				REGTERKANT/RIGHT HAND SIDE		
	Y	X	WG 27°		Y	X
L52	16 095.53	3 110 906.53		R52	16 058.10	3 111 148.94
L53	16 097.93	3 110 871.37		R53	16 053.38	3 111 104.26
L54	16 097.49	3 110 856.33		R54	16 053.14	3 111 089.22
L55	16 092.95	3 110 820.86		R55	16 055.01	3 111 039.50
L56	16 092.31	3 110 799.65		R56	16 052.35	3 110 961.08
L57	16 101.07	3 110 705.57		R57	16 050.78	3 110 952.20
L58	16 106.30	3 110 510.75		R58	16 023.59	3 110 798.19
L59	16 106.32	3 110 510.52		R59	16 024.15	3 110 757.45
L60	16 134.44	3 110 224.38		R60	16 032.30	3 110 520.93
L61	16 169.13	3 110 003.42		R61	16 040.72	3 110 519.75
L62	16 208.46	3 109 810.25		R62	16 054.17	3 110 375.43
L63	16 249.58	3 109 637.16		R63	16 071.23	3 110 214.57
L64	16 268.79	3 109 566.68		R64	16 090.26	3 110 091.74
L65	16 311.42	3 109 467.92		R65	16 085.35	3 110 071.13
L66	16 349.85	3 109 331.12		R66	16 062.84	3 110 050.69
L67	16 351.73	3 109 324.44		R67	16 033.19	3 109 986.65
L68	16 352.39	3 109 324.79		R68	16 110.85	3 109 972.92
L69	16 353.80	3 109 317.08		R69	16 217.05	3 109 487.60
L70	16 368.89	3 109 263.37		R70	16 227.62	3 109 443.13
L71	16 388.73	3 109 200.18		R71	16 231.57	3 109 433.17
L72	16 536.01	3 108 793.54		R72	16 287.66	3 109 291.60
L73	16 639.23	3 108 488.33		R73	16 397.61	3 109 076.37
L74	16 704.49	3 108 270.58		R74	16 504.10	3 108 782.29
L75	16 743.13	3 108 114.64		R75	16 514.54	3 108 735.48
L76	16 791.78	3 107 856.52		R76	16 559.69	3 108 624.59
L77	16 826.81	3 107 640.64		R77	16 607.40	3 108 451.32
L78	16 877.92	3 107 300.17		R78	16 629.06	3 108 395.20
L79	16 889.98	3 107 294.35		R79	16 668.79	3 108 220.10
L80	16 887.50	3 107 264.88		R80	16 703.36	3 108 064.85
L81	16 887.26	3 107 262.12		R81	16 755.35	3 107 870.51
L82	16 923.55	3 107 019.19		R82	16 793.46	3 107 635.70
L83	16 957.35	3 106 792.84		R83	16 844.19	3 107 296.70
L84	16 996.82	3 106 504.81		R84	16 849.37	3 107 243.23
L85	17 035.76	3 106 245.25		R85	16 849.43	3 107 242.61
				R86	16 823.93	3 107 228.07
				R87	16 964.00	3 106 291.26
				R88	16 948.21	3 106 264.99
				R89	16 955.88	3 106 230.74

Van	6	Van	6	P774/09
Sheet		of		