

---

## GOVERNMENT NOTICE

---

### DEPARTMENT OF TRANSPORT

No. 1039

11 December 2012

## THE SOUTH AFRICAN NATIONAL ROADS AGENCY SOC LIMITED

Registration No: 98/09584/06

### DECLARATION AMENDMENT OF NATIONAL ROAD R38 SECTION 3

AMENDMENT OF DECLARATION NO. 176 OF 2007.

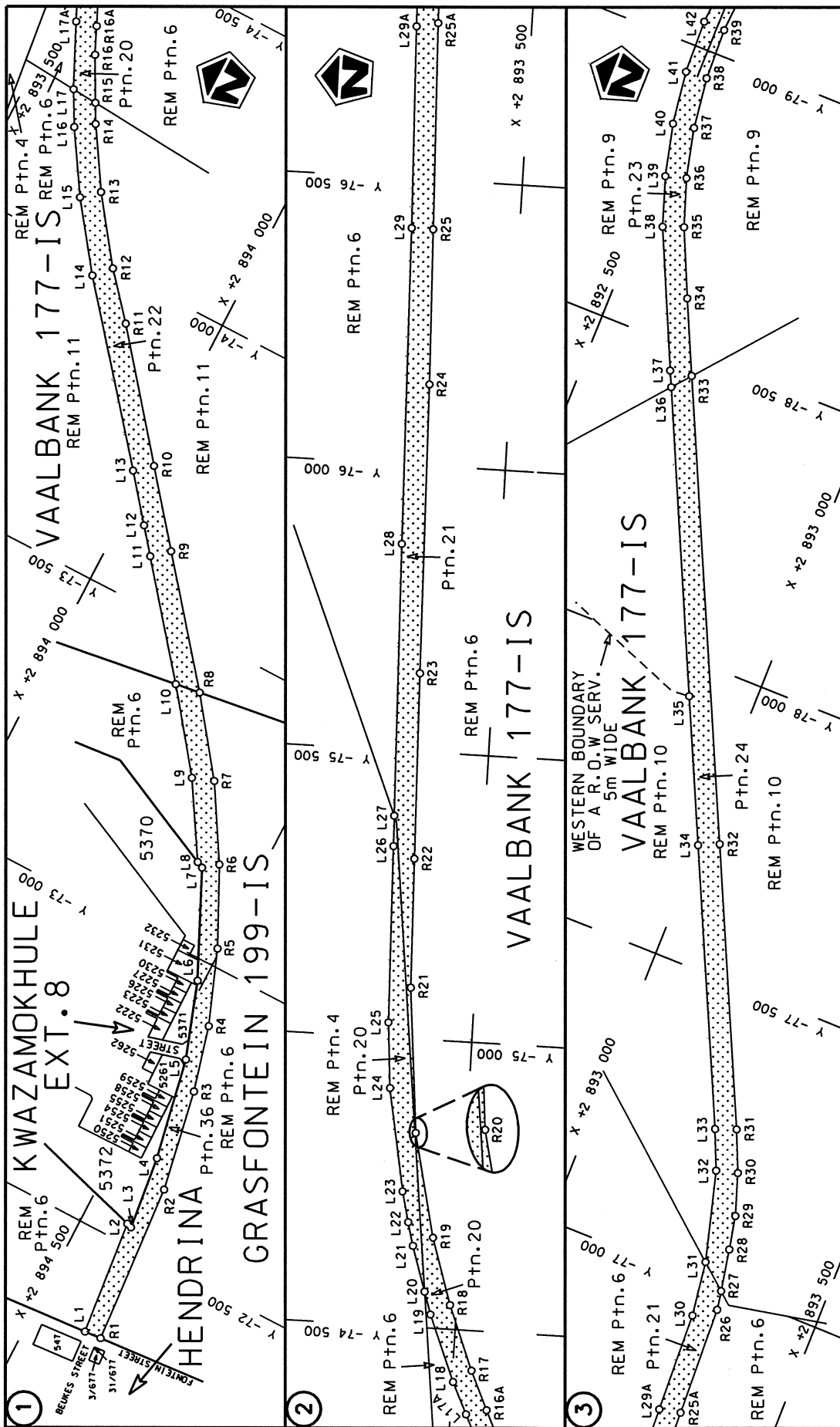
By virtue of section 40(1)(b) of The South African National Roads Agency Limited and National Roads Act, 1998 (Act No. 7 of 1998), I hereby amend Declaration No. 176 of 2007 by substituting Annexure paragraphs (II) and (III), with the subjoined sheets 1 to 10 of Plan No. P792/10.

**(National Road R38 Section 3: Hendrina - Carolina)**

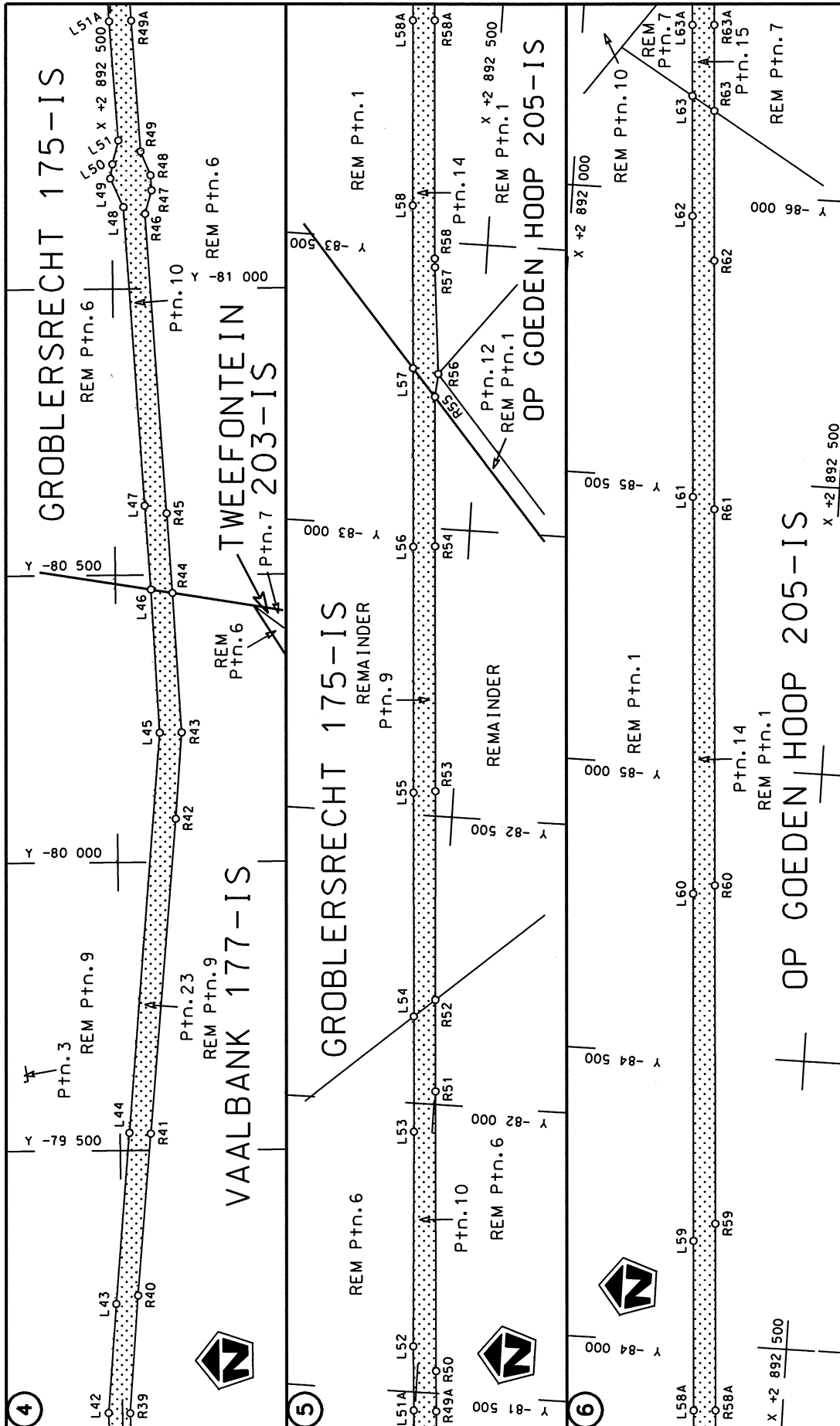


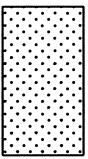
---

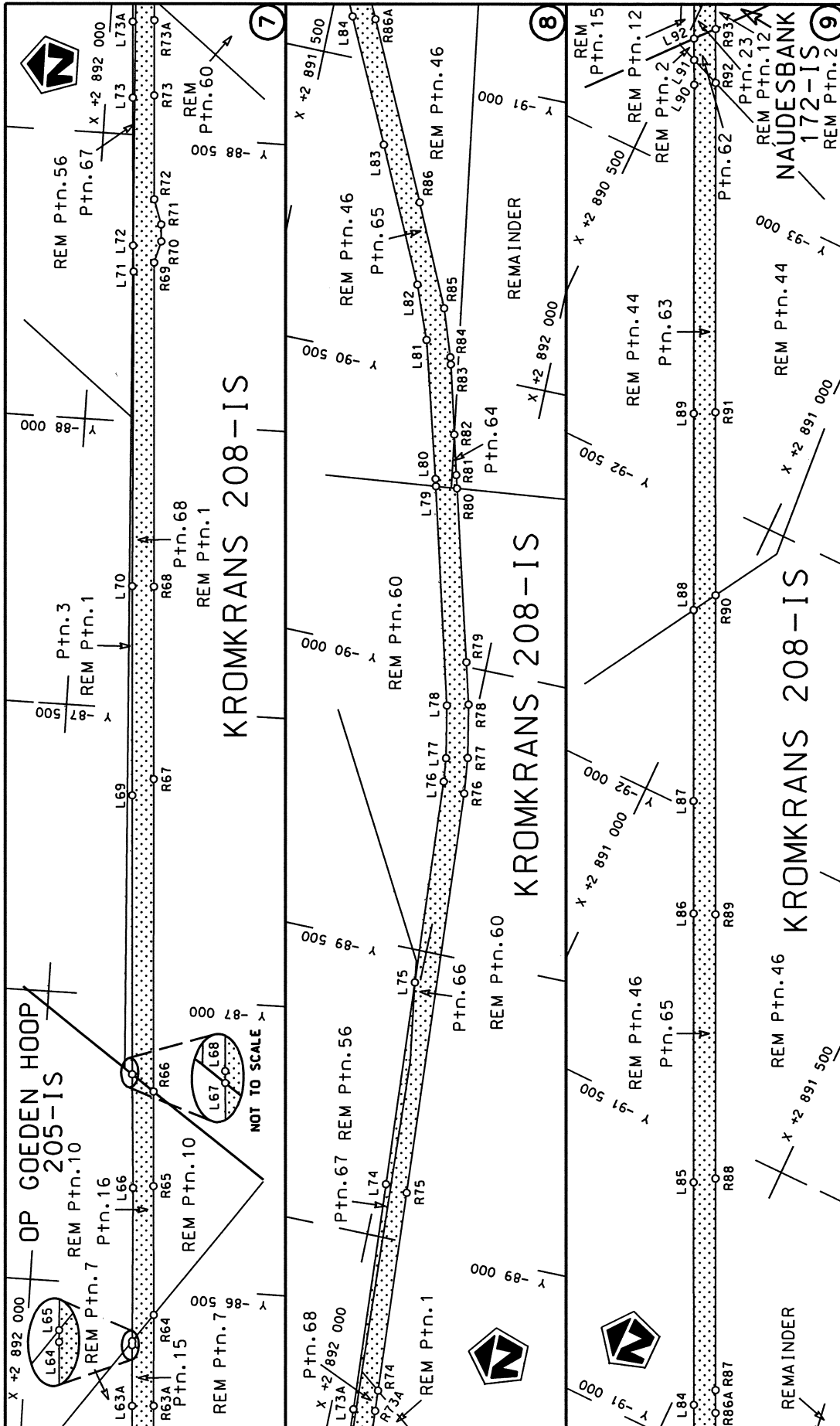
MINISTER OF TRANSPORT



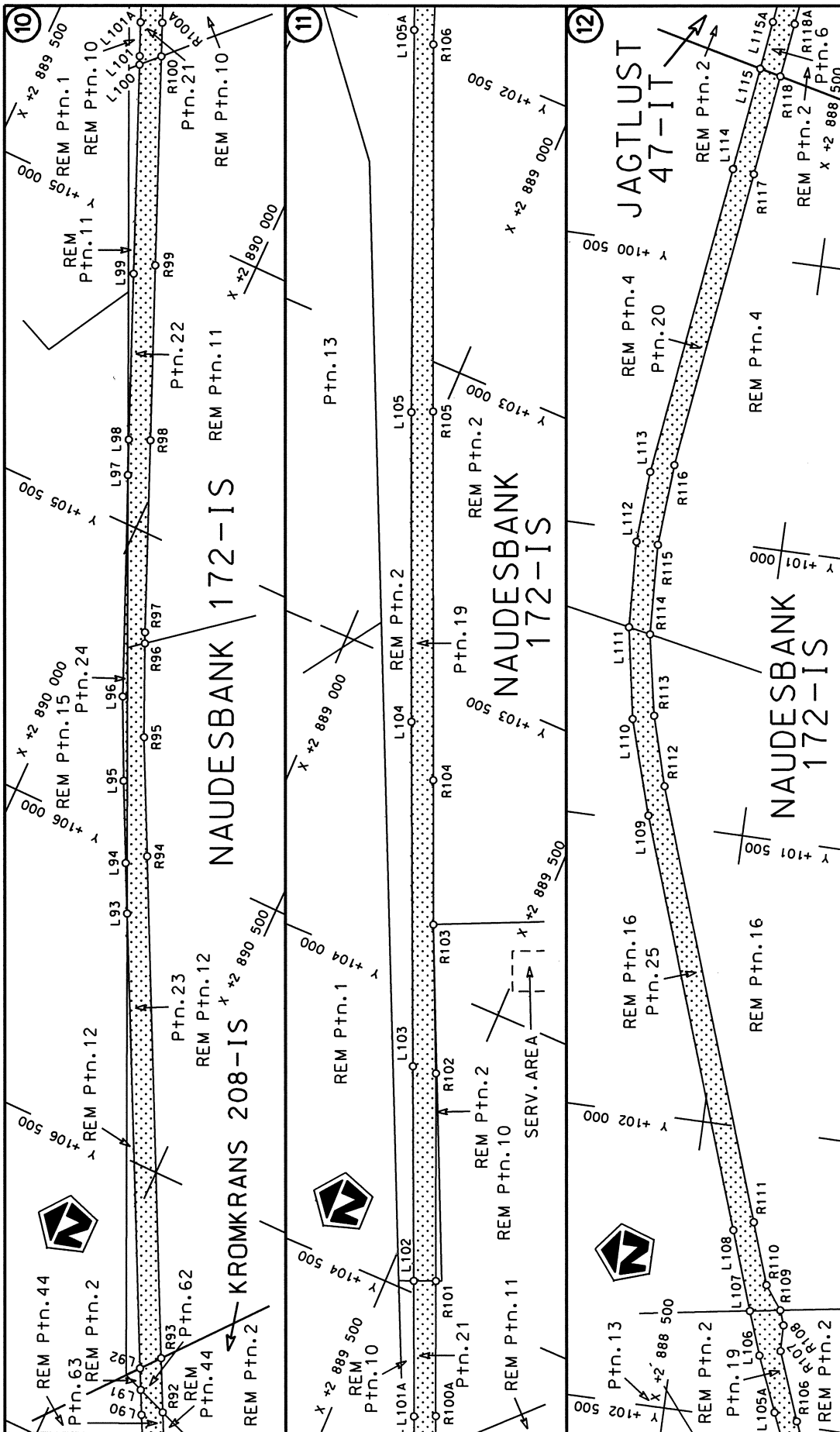
<p>Die Suid Afrikaanse Nasionale Padagentskap Beperk The South African National Roads Agency Limited</p>	<p>Die figuur getoon The figure shown</p>	<p>steldie padreserwe voor van 'n gedeelte represents the road reserve of a portion van Nasionale Roete R38 Seksie of National Route R38 Section</p>
<p>Vel Sheet 1 of 10</p>	<p>3</p>	<p>Plan P792/10</p>

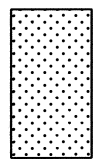


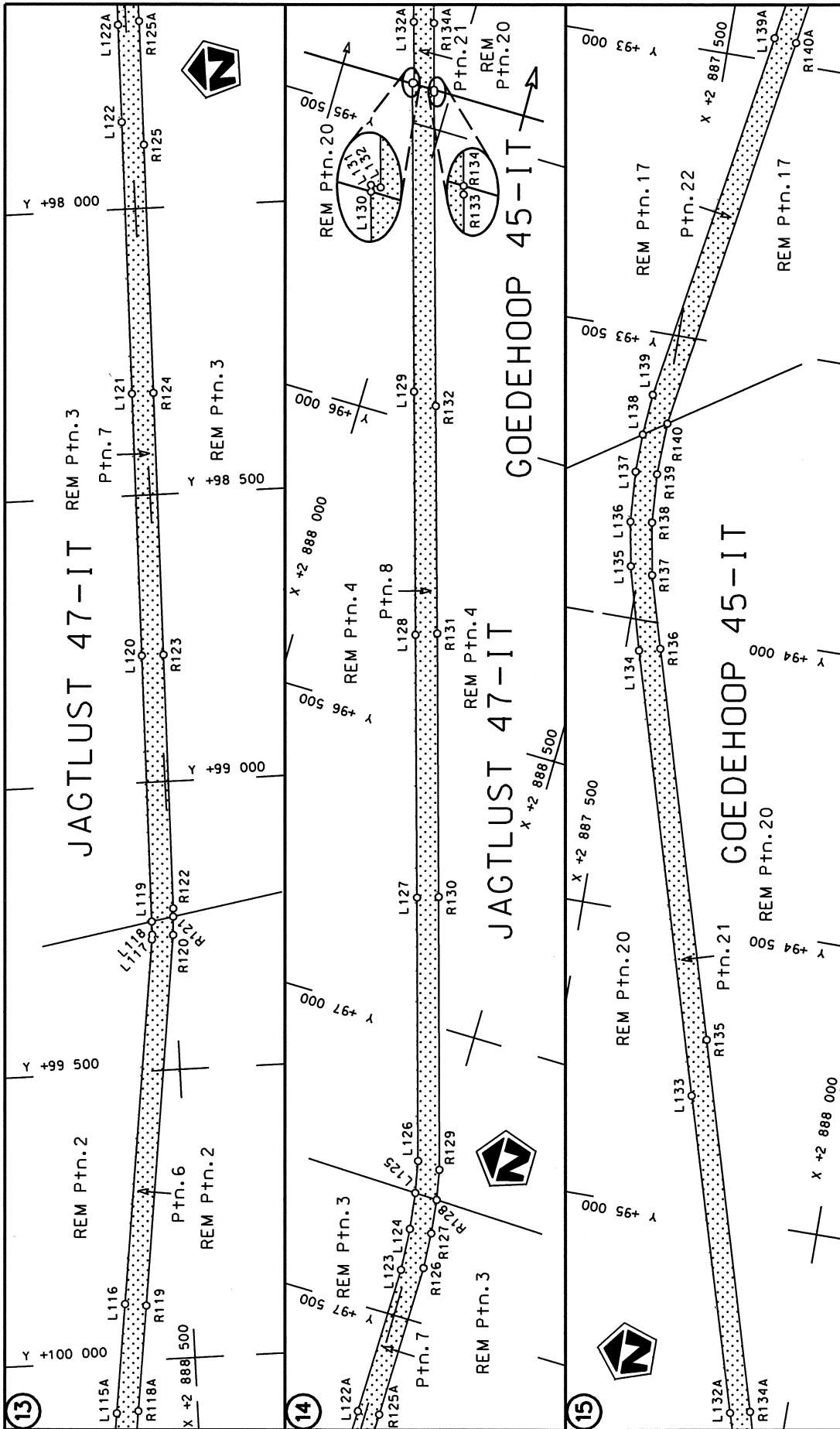
<p>Die Suid Afrikaanse Nasionale Padagentskap Beperk The South African National Roads Agency Limited</p>	<p>Die figuur getoon The figure shown</p>  <p>stelt die padreserwe voor van 'n gedeelte represents the road reserve of a portion van Nasionale Roete R38 of National Route</p>	<p>Vel Sheet 2 of 10 Plan P792/10</p>
--	---	---

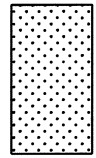


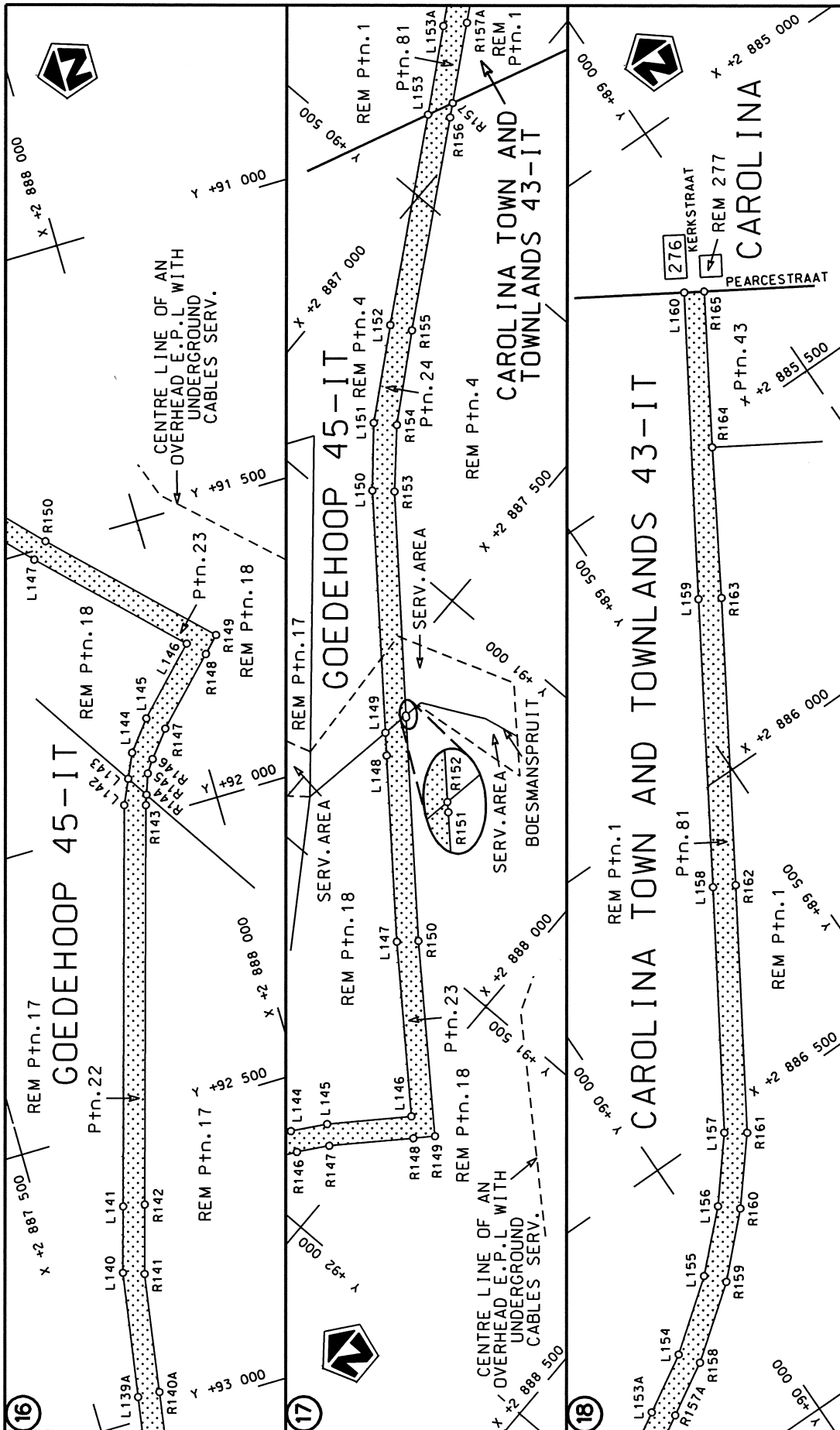
<p>Die Suid Afrikaanse Nasionale Padogentskap Beperk The South African National Roads Agency Limited</p>	<p>Die figuur getoon The figure shown</p>	<p>Vel Sheet 3 of 10 Plan P792/10</p>
<p>steldie padreserwe voor van 'n gedeelte represents the road reserve of a portion van Nasionale Roete R38 Seksie R38 Section</p>		<p>3</p>



<p>Die Suid Afrikaanse Nasionale Padagentskap Beperk The South African National Roads Agency Limited</p>	<p>Die figuur getoon The figure shown</p>  <p>steldie padreserwe voor van 'n gedeelte represents the road reserve of a portion van Nasionale Roete R38 of National Route R38</p> <p>Seksie Section</p>	<p>Vel Sheet</p> <p>4 of</p> <p>10</p> <p>Plan P792/10</p>
--	---	--



<p>Die Suid Afrikaanse Nasionale Padagentskap Beperk The South African National Roads Agency Limited</p>	<p>Die figuur getoon The figure shown</p>  <p>steldie padreserwe voor van 'n gedeelte represents the road reserve of a portion van Nasionale Roete R38 of National Route</p>	<p>Vel Sheet 5 van 10 Plan P792/10</p>
--	---	--



<p>Die Suid Afrikaanse Nasionale Padogentskap Beperk The South African National Roads Agency Limited</p>	<p>Die figuur getoon The figure shown</p>	<p>Vel Sheet 6 of 10</p> <p>Plan P792/10</p>
<p>steldie padreserwe voor van 'n gedeelte represents the road reserve of a portion van Nasionale Roete R38 Sektie 3 of National Route Section</p>		

PADRESERWE KOÖRDINATE				/	ROAD RESERVE CO-ORDINATES			
LINKERKANT/LEFT HAND SIDE					REGTERKANT/RIGHT HAND SIDE			
	Y	X	WG	29°	Y	X		
L1	-72 332.96	2 894	596.40	R1	-72 335.28	2 894	625.70	
L2	-72 533.44	2 894	575.19	R2	-72 615.97	2 894	605.41	
L3	-72 530.85	2 894	584.10	R3	-72 791.01	2 894	572.84	
L4	-72 658.48	2 894	569.25	R4	-72 903.41	2 894	543.33	
L5	-72 833.79	2 894	534.82	R5	-73 030.36	2 894	494.62	
L6	-72 964.69	2 894	489.62	R6	-73 161.92	2 894	430.00	
L7	-73 143.02	2 894	405.84	R7	-73 286.83	2 894	354.79	
L8	-73 148.30	2 894	394.54	R8	-73 412.03	2 894	261.22	
L9	-73 273.91	2 894	317.82	R9	-73 608.18	2 894	103.33	
L10	-73 405.79	2 894	217.58	R10	-73 727.01	2 894	007.80	
L11	-73 583.48	2 894	074.83	R11	-73 925.13	2 893	848.61	
L12	-73 626.37	2 894	040.16	R12	-74 000.22	2 893	783.98	
L13	-73 702.81	2 893	978.86	R13	-74 109.16	2 893	704.11	
L14	-73 972.95	2 893	758.04	R14	-74 210.71	2 893	640.71	
L15	-74 084.25	2 893	675.75	R15	-74 243.42	2 893	623.28	
L16	-74 188.71	2 893	610.02	R16	-74 317.53	2 893	583.87	
L17	-74 246.82	2 893	578.30	R17	-74 430.57	2 893	532.80	
L18	-74 409.14	2 893	501.74	R18	-74 542.39	2 893	488.69	
L19	-74 523.82	2 893	455.85	R19	-74 657.49	2 893	452.43	
L20	-74 563.00	2 893	443.14	R20	-74 837.33	2 893	411.72	
L21	-74 641.38	2 893	418.33	R21	-75 088.61	2 893	388.46	
L22	-74 681.83	2 893	407.82	R22	-75 313.32	2 893	381.55	
L23	-74 734.72	2 893	394.83	R23	-75 636.57	2 893	372.27	
L24	-74 912.57	2 893	362.19	R24	-76 142.40	2 893	358.95	
L25	-75 026.11	2 893	352.84	R25	-76 413.62	2 893	349.46	
L26	-75 333.12	2 893	343.68	R26	-76 964.89	2 893	329.82	
L27	-75 386.16	2 893	342.04	R27	-76 997.72	2 893	324.16	
L28	-75 860.59	2 893	327.34	R28	-77 070.14	2 893	310.63	
L29	-76 413.60	2 893	311.99	R29	-77 128.10	2 893	298.92	
L30	-76 939.67	2 893	293.24	R30	-77 199.17	2 893	275.26	
L31	-77 034.48	2 893	280.08	R31	-77 268.65	2 893	245.28	
L32	-77 189.03	2 893	238.40	R32	-77 718.77	2 893	033.88	
L33	-77 255.32	2 893	209.89	R33	-78 460.81	2 892	685.20	
L34	-77 702.99	2 892	999.49	R34	-78 583.97	2 892	627.53	
L35	-77 938.57	2 892	888.87	R35	-78 697.44	2 892	576.09	
L36	-78 429.21	2 892	658.89	R36	-78 778.69	2 892	548.30	
L37	-78 455.51	2 892	646.40	R37	-78 865.30	2 892	527.82	
L38	-78 684.12	2 892	540.84	R38	-78 954.32	2 892	516.09	
L39	-78 768.17	2 892	512.32	R39	-79 043.97	2 892	513.26	
L40	-78 858.59	2 892	490.63	R40	-79 248.38	2 892	529.09	
L41	-78 951.29	2 892	478.32	R41	-79 528.96	2 892	554.02	
L42	-79 044.71	2 892	475.36	R42	-80 075.25	2 892	602.47	
L43	-79 234.27	2 892	490.60	R43	-80 225.40	2 892	614.04	
L44	-79 530.50	2 892	516.32	R44	-80 468.55	2 892	600.33	
L45	-80 225.16	2 892	575.84	R45	-80 607.53	2 892	591.52	
L46	-80 474.64	2 892	562.85	R46	-81 130.97	2 892	558.22	
L47	-80 621.42	2 892	553.21	R47	-81 171.95	2 892	570.11	
L48	-81 143.10	2 892	520.23	R48	-81 198.41	2 892	568.38	
L49	-81 193.18	2 892	497.72	R49	-81 240.10	2 892	551.36	
L50	-81 218.09	2 892	501.62	R50	-81 538.75	2 892	532.38	
L51	-81 259.56	2 892	512.34	R51	-82 022.80	2 892	501.18	
				Vel	7	Van	10	P792/10
				Sheet		of		



PADRESERWE KOÖRDINATE				/	ROAD RESERVE CO-ORDINATES			
LINKERKANT/LEFT HAND SIDE					REGTERKANT/RIGHT HAND SIDE			
	Y	X	WG	29°	Y	X		
L52	-81 579.20	2 892 490.22		R52	-82 181.08	2 892 491.23		
L53	-81 950.63	2 892 468.18		R53	-82 543.23	2 892 468.48		
L54	-82 149.85	2 892 455.55		R54	-82 969.09	2 892 441.45		
L55	-82 538.34	2 892 430.93		R55	-83 229.95	2 892 424.68		
L56	-82 965.91	2 892 403.71		R56	-83 270.19	2 892 427.98		
L57	-83 277.66	2 892 383.60		R57	-83 455.75	2 892 410.36		
L58	-83 560.94	2 892 365.32		R58	-83 470.85	2 892 409.20		
L59	-84 177.82	2 892 326.61		R59	-84 209.92	2 892 362.51		
L60	-84 778.91	2 892 288.43		R60	-84 795.63	2 892 325.10		
L61	-85 468.85	2 892 244.72		R61	-85 449.78	2 892 283.47		
L62	-85 958.77	2 892 213.17		R62	-85 883.13	2 892 255.92		
L63	-86 168.02	2 892 199.94		R63	-86 144.47	2 892 239.35		
L64	-86 397.05	2 892 185.45		R64	-86 452.07	2 892 219.86		
L65	-86 403.89	2 892 185.05		R65	-86 675.00	2 892 205.11		
L66	-86 669.69	2 892 169.59		R66	-86 838.53	2 892 194.82		
L67	-86 865.91	2 892 155.57		R67	-87 380.08	2 892 160.71		
L68	-86 866.08	2 892 155.56		R68	-87 714.68	2 892 139.45		
L69	-87 349.46	2 892 124.85		R69	-88 279.71	2 892 103.40		
L70	-87 712.88	2 892 101.36		R70	-88 317.28	2 892 113.57		
L71	-88 261.74	2 892 068.39		R71	-88 346.75	2 892 111.46		
L72	-88 306.99	2 892 064.53		R72	-88 389.88	2 892 096.47		
L73	-88 564.56	2 892 047.41		R73	-88 571.08	2 892 084.91		
L74	-89 091.43	2 892 013.85		R74	-88 737.79	2 892 074.32		
L75	-89 443.97	2 891 991.15		R75	-89 084.30	2 892 052.32		
L76	-89 796.18	2 891 968.48		R76	-89 783.33	2 892 007.93		
L77	-89 836.76	2 891 963.98		R77	-89 845.02	2 892 001.17		
L78	-89 926.84	2 891 946.40		R78	-89 936.37	2 891 983.30		
L79	-90 297.21	2 891 848.64		R79	-90 007.57	2 891 964.45		
L80	-90 309.64	2 891 845.36		R80	-90 301.19	2 891 885.49		
L81	-90 544.04	2 891 779.67		R81	-90 323.90	2 891 879.38		
L82	-90 635.22	2 891 743.96		R82	-90 392.44	2 891 861.29		
L83	-90 862.14	2 891 636.06		R83	-90 511.09	2 891 829.96		
L84	-91 070.25	2 891 536.37		R84	-90 523.10	2 891 826.54		
L85	-91 418.78	2 891 369.76		R85	-90 604.75	2 891 798.31		
L86	-91 839.42	2 891 169.09		R86	-90 776.53	2 891 718.30		
L87	-92 016.09	2 891 084.72		R87	-91 109.60	2 891 559.33		
L88	-92 316.39	2 890 941.59		R88	-91 441.11	2 891 401.32		
L89	-92 626.26	2 890 793.90		R89	-91 854.44	2 891 203.98		
L90	-93 145.03	2 890 547.15		R90	-92 355.97	2 890 964.93		
L91	-93 184.07	2 890 528.29		R91	-92 644.63	2 890 827.00		
L92	-93 217.70	2 890 512.04		R92	-93 164.11	2 890 579.30		
				R93	-93 249.01	2 890 538.68		
			WG 31°					
L92	106 819.45	2 890 616.55		R93	106 787.73	2 890 642.72		
L93	106 114.01	2 890 266.35		R94	106 009.26	2 890 256.77		
L94	106 035.58	2 890 227.42		R95	105 823.99	2 890 165.25		
L95	105 907.54	2 890 164.44		R96	105 675.27	2 890 098.42		
L96	105 775.35	2 890 101.83		R97	105 657.77	2 890 090.56		
L97	105 421.42	2 889 948.64						
				Vel 8	Van 10	P792/10		
				Sheet	of			

PADRESERWE KOÖRDINATE				/	ROAD RESERVE CO-ORDINATES				
LINKERKANT/LEFT HAND SIDE					REGTERKANT/RIGHT HAND SIDE				
	Y	X	WG	31°	Y	X			
L98	105 364.65	2 889 924.05		R98	105 349.94	2 889 958.99			
L99	105 098.73	2 889 810.54		R99	105 069.49	2 889 839.02			
L100	104 763.87	2 889 667.32		R100	104 734.53	2 889 696.00			
L101	104 750.18	2 889 661.46		R101	104 465.19	2 889 581.17			
L102	104 479.97	2 889 545.67		R102	104 135.11	2 889 440.31			
L103	104 139.66	2 889 398.77		R103	103 899.89	2 889 335.17			
L104	103 591.34	2 889 162.00		R104	103 669.56	2 889 236.57			
L105	103 095.68	2 888 949.97		R105	103 079.69	2 888 984.16			
L106	102 387.16	2 888 652.79		R106	102 491.52	2 888 732.78			
L107	102 313.00	2 888 625.67		R107	102 374.54	2 888 688.24			
L108	102 178.32	2 888 577.90		R108	102 329.75	2 888 687.24			
L109	101 487.70	2 888 332.82		R109	102 304.59	2 888 678.14			
L110	101 325.37	2 888 282.37		R110	102 264.55	2 888 648.31			
L111	101 168.26	2 888 254.26		R111	102 159.93	2 888 611.41			
L112	101 019.10	2 888 246.81		R112	101 433.47	2 888 353.70			
L113	100 895.08	2 888 254.17		R113	101 314.72	2 888 319.11			
L114	100 352.87	2 888 324.63		R114	101 175.63	2 888 292.46			
L115	100 172.90	2 888 347.83		R115	101 019.40	2 888 284.72			
L116	99 900.96	2 888 382.89		R116	100 877.63	2 888 294.36			
L117	99 272.84	2 888 463.02		R117	100 356.70	2 888 361.94			
L118	99 264.52	2 888 463.90		R118	100 181.53	2 888 384.53			
L119	99 241.60	2 888 464.24		R119	99 905.39	2 888 420.14			
L120	98 779.11	2 888 471.01		R120	99 266.81	2 888 500.29			
L121	98 321.84	2 888 477.36		R121	99 235.05	2 888 502.05			
L122	97 847.77	2 888 484.02		R122	99 220.66	2 888 502.85			
L123	97 421.05	2 888 489.76		R123	98 779.47	2 888 508.78			
L124	97 348.75	2 888 484.96		R124	98 322.28	2 888 515.19			
L125	97 286.24	2 888 476.62		R125	97 889.21	2 888 520.96			
L126	97 231.84	2 888 465.84		R126	97 407.07	2 888 526.76			
L127	96 793.99	2 888 336.42		R127	97 345.71	2 888 522.84			
L128	96 356.03	2 888 205.91		R128	97 287.29	2 888 515.69			
L129	95 949.31	2 888 084.61		R129	97 236.09	2 888 505.75			
L130	95 434.28	2 887 931.20		R130	96 782.32	2 888 372.24			
L131	95 432.39	2 887 930.64		R131	96 343.13	2 888 241.61			
L132	95 432.28	2 887 933.55		R132	95 962.78	2 888 128.04			
L133	94 799.61	2 887 744.94		R133	95 439.00	2 887 971.76			
L134	94 053.02	2 887 524.04		R134	95 434.20	2 887 970.35			
L135	93 910.56	2 887 484.94		R135	94 699.74	2 887 754.40			
L136	93 834.08	2 887 471.44		R136	94 043.72	2 887 560.34			
L137	93 746.37	2 887 465.66		R137	93 919.65	2 887 524.56			
L138	93 680.20	2 887 467.13		R138	93 829.27	2 887 508.91			
L139	93 608.96	2 887 472.73		R139	93 744.43	2 887 503.44			
L140	92 745.39	2 887 612.55		R140	93 654.21	2 887 506.46			
L141	92 635.23	2 887 645.02		R141	92 757.80	2 887 648.28			
L142	91 968.25	2 887 840.95		R142	92 642.57	2 887 682.15			
L143	91 926.31	2 887 860.32		R143	91 978.77	2 887 877.33			
L144	91 884.57	2 887 879.59		R144	91 961.70	2 887 883.41			
L145	91 834.45	2 887 919.95		R145	91 926.91	2 887 895.81			
L146	91 729.09	2 888 023.82		R146	91 905.29	2 887 910.77			
L147	91 514.70	2 887 809.08		R147	91 860.65	2 887 947.01			
L148	91 279.24	2 887 586.69		R148	91 755.76	2 888 050.78			
					Vel	9	Van	10	P792/10
					Sheet		of		

PADRESERWE KOÖRDINATE				/	ROAD RESERVE CO-ORDINATES		
LINKERKANT/LEFT HAND SIDE					REGTERKANT/RIGHT HAND SIDE		
	Y	X	WG	31°	Y	X	
L149	91 250.31	2 887	559.39	R149	91 728.80	2 888	077.04
L150	90 943.23	2 887	269.62	R150	91 489.34	2 887	836.97
L151	90 851.36	2 887	195.03	R151	91 207.15	2 887	570.06
L152	90 702.58	2 887	106.75	R152	91 204.39	2 887	567.22
L153	90 380.59	2 886	919.78	R153	90 919.59	2 887	300.25
L154	90 149.69	2 886	783.89	R154	90 828.32	2 887	228.07
L155	90 036.22	2 886	696.72	R155	90 685.60	2 887	141.69
L156	89 948.13	2 886	610.62	R156	90 359.49	2 886	952.38
L157	89 867.33	2 886	511.91	R157	90 337.49	2 886	939.52
L158	89 643.17	2 886	149.90	R158	90 127.06	2 886	816.63
L159	89 381.25	2 885	722.53	R159	90 010.17	2 886	726.87
L160	89 100.03	2 885	266.95	R160	89 918.30	2 886	635.80
				R161	89 834.47	2 886	534.46
				R162	89 608.66	2 886	169.11
				R163	89 347.28	2 885	743.48
				R164	89 212.04	2 885	517.29
				R165	89 070.25	2 885	285.14

Vel 10 Van 10  
Sheet of

P792/10