
GOVERNMENT NOTICE

DEPARTMENT OF TRANSPORT

No. 994

12 November 2010

THE SOUTH AFRICAN NATIONAL ROADS AGENCY LIMITED

Registration No: 98/09584/06

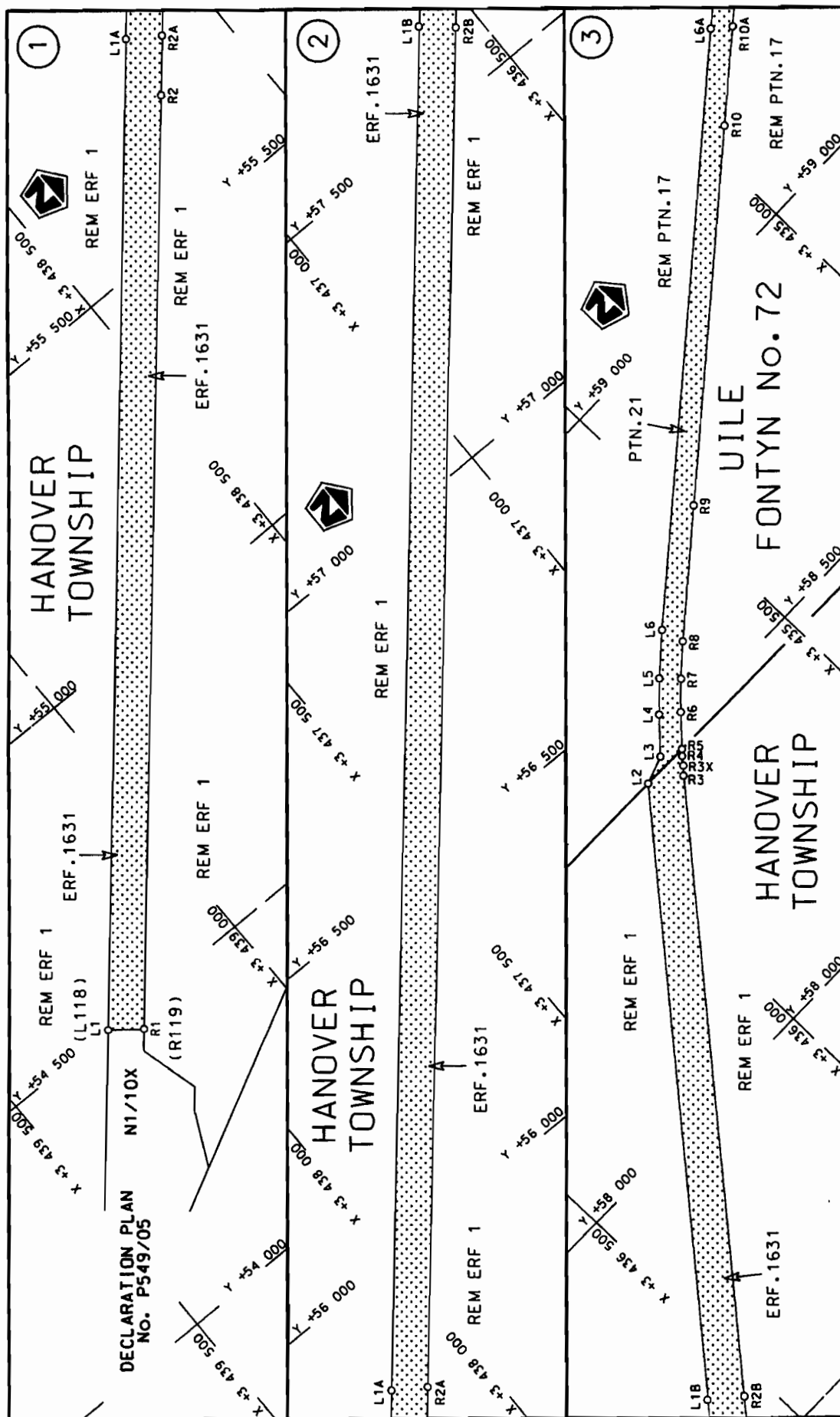
DECLARATION AMENDMENT OF NATIONAL ROAD N10 SECTION 6

AMENDMENT OF DECLARATION No. 630 OF 2005

By virtue of section 40(1)(b) of the South African National Roads Agency Limited and the National Roads Act, 1998 (Act No. 7 of 1998), I hereby amend Declaration No. 630 of 2005, by substituting the section of the descriptive declaration from Hanover up to De Aar, with the subjoined sheets 1 to 13 of Plan No. P676/08.

[National Road N10 Section 6: Hanover (N1) – De Aar]

 (Acting Minister)
MINISTER OF TRANSPORT



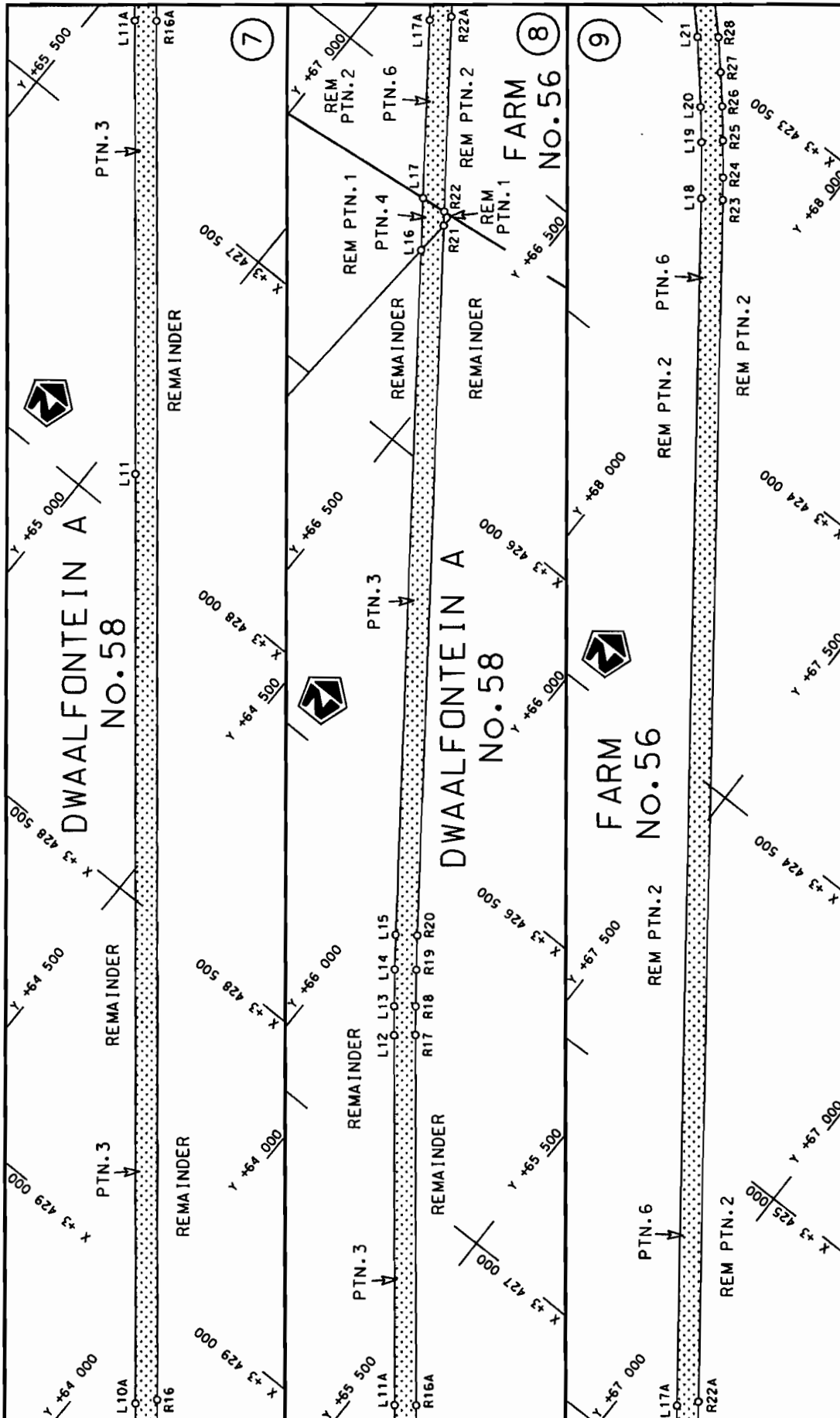
Die Suid Afrikaanse Nasionale Padogentskap Beperk
The South African National Roads Agency Limited

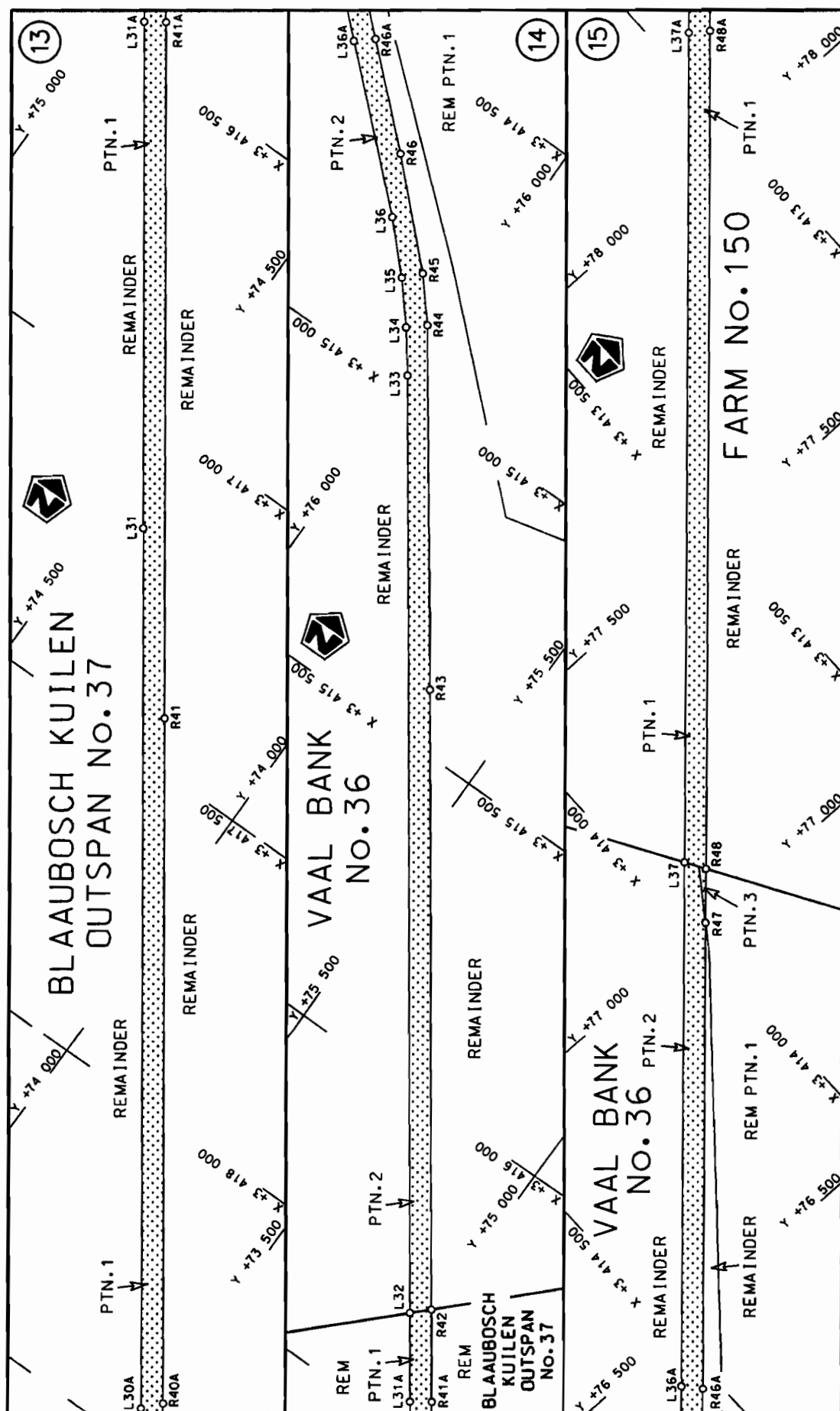
Die figuur getoon




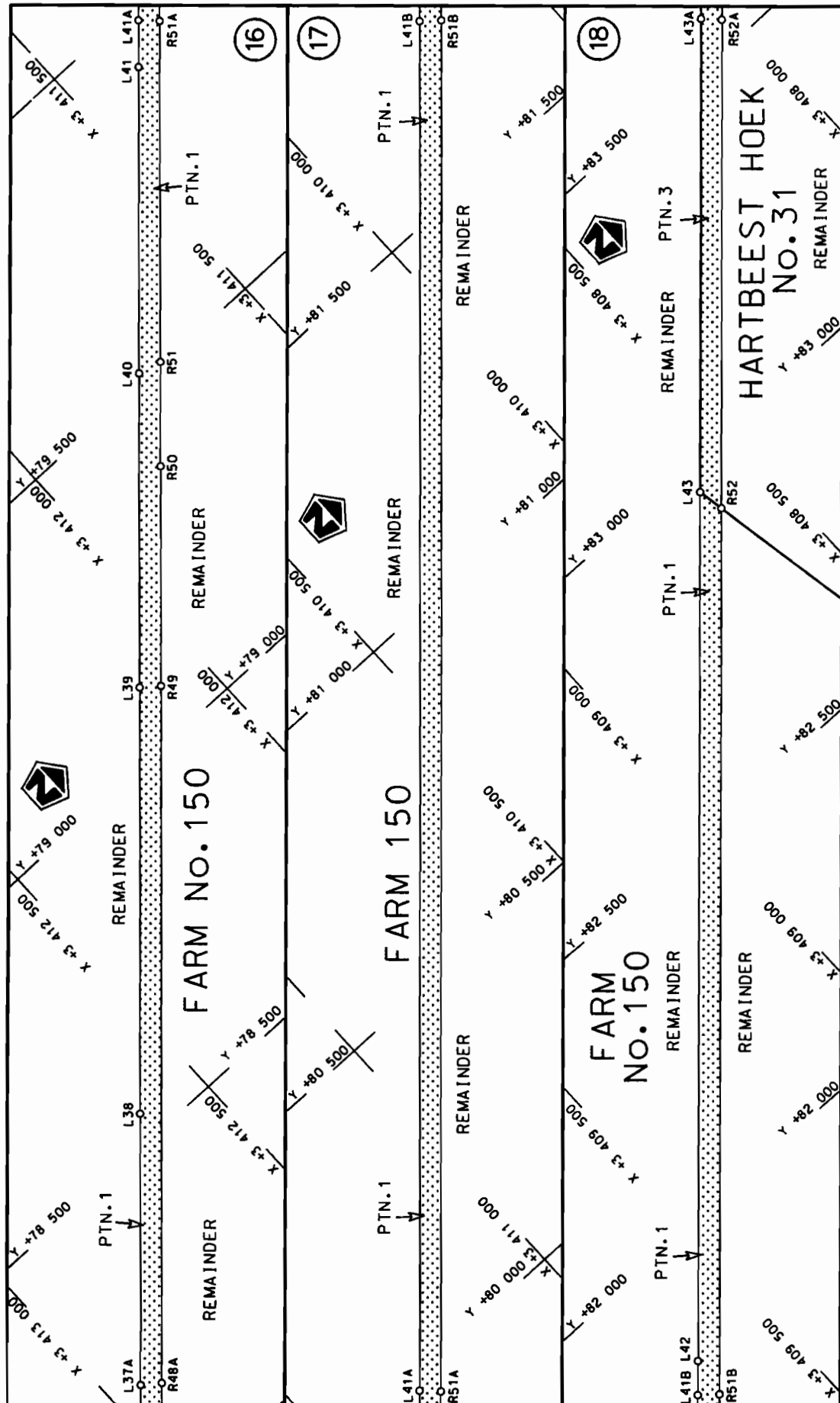
steldie padreserwe voor van 'n gedeelte
represents the road reserve of a portion
van Nasionale Raete N10 Seksie
of National Route Section

Vel Sheet 1 of 13
Plan P676/08

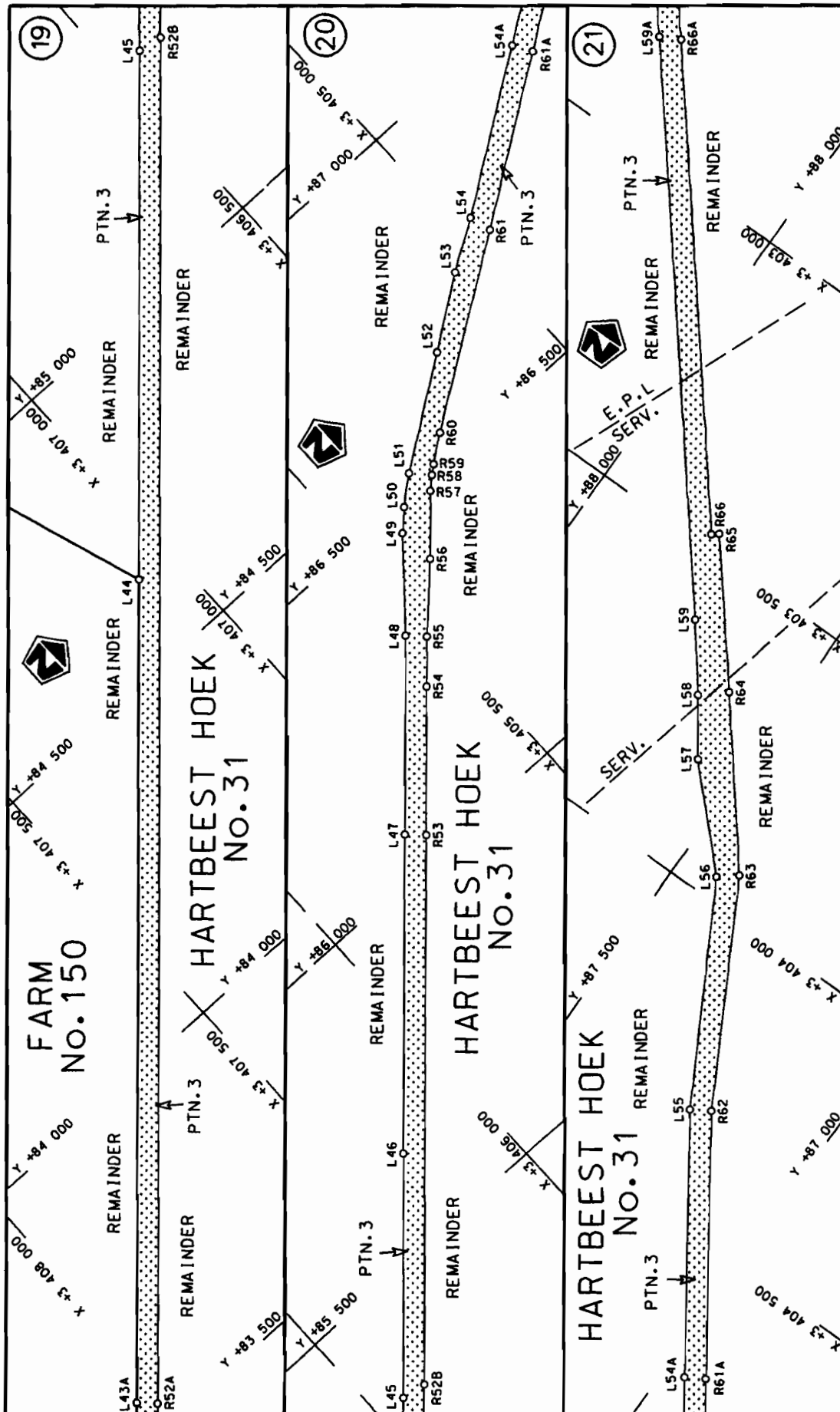




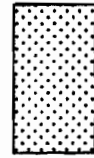
Die Suid Afrikaanse Nasionale Padagentskap Beperk The South African National Roads Agency Limited	Die figuur getoon The figure shown		stel die padreserwe voor van 'n gedeelte represents the road reserve of a portion van Nasionale Roete N10 of National Route	Vel Sheet 5 of 13
			6 Seksie Section	Plan P676/08



Die Suid Afrikaanse Nasionale Padagentskap Beperk The South African National Roads Agency Limited	Die figuur getoon The figure shown	steldie padreserwe voor van 'n gedeelte represents the road reserve of a portion van Nasionale Roete N10 of National Route	Vel Sheet 6 of 13	6	Plan P676/08
--	---------------------------------------	---	----------------------	---	--------------



steldie padreserwe voor van 'n gedeelte
represents the road reserve of a portion
von Nasionale Roete N10 Sektie
of National Route

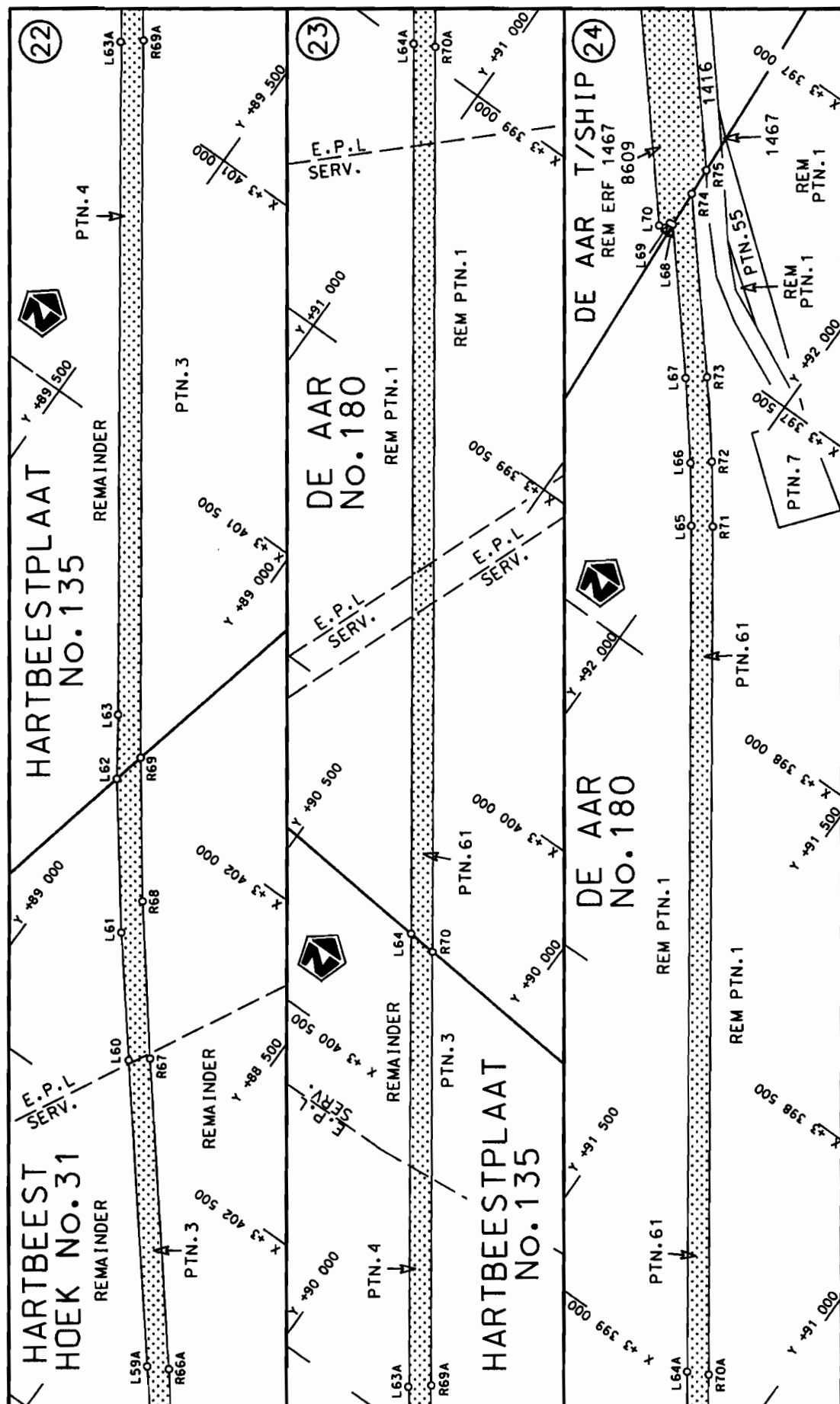


Die figuur getoon
The figure shown

Die Suid Afrikaanse Nasionale Padagentskap Beperk
The South African National Roads Agency Limited

Vel
Sheet 7 van 13
Plan P676/08

6
Sektie
Section



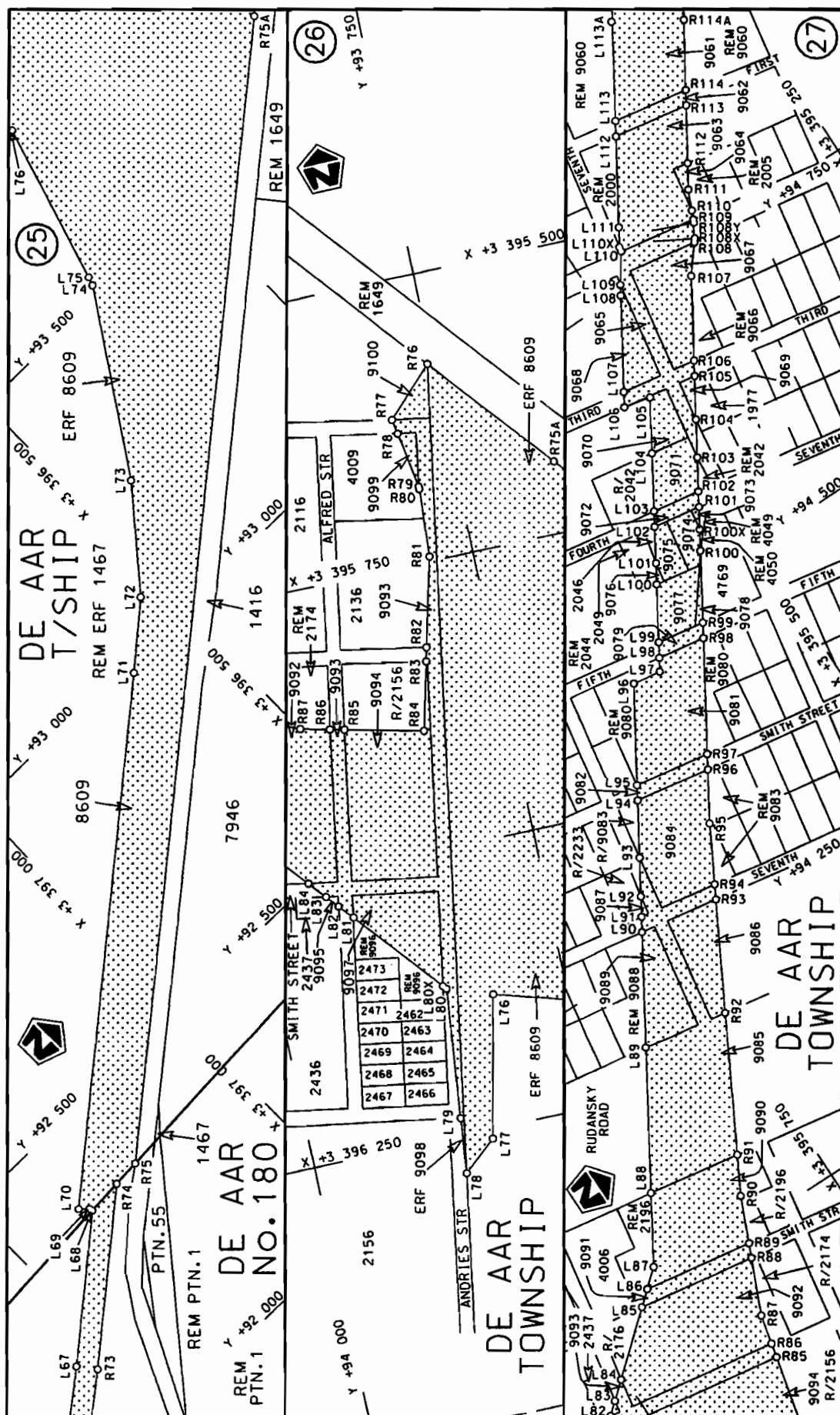
Die Suid Afrikaanse Nasionale Padagentskap Beperk
The South African National Roads Agency Limited

Die figuur getoon

steldie podreserwe voor van 'n gedeelte
represents the rood reserve of o portion
von Nasionale Roete N10 Seksie
of National Route Section

9

Vel Sheet 8 von 13
Plan P676/08



Die Suid Afrikaanse Nasionale Padagentskap Beperk
The South African National Roads Agency Limited

Die figuur getoon

steldie podreserwe voor van 'n gedeelte
represents the rood reserve of a portion
van Nasionale Roete N10 Seksie
of National Route Section

Vel Sheet 9 van of 13
Plan P676/08

PADRESERVE KOÖRDINATE / ROAD RESERVE CO-ORDINATES									
LINKERKANT/LEFT HAND SIDE					REGTERKANT/RIGHT HAND SIDE				
	Y		X	WG 25°		Y		X	
L1	54 501.020	3	439	288.520	R1	54 462.240	3	439	238.660
L2	58 471.450	3	435	877.260	R2	55 707.080	3	438	168.410
L3	58 488.560	3	435	828.260	R3	58 439.850	3	435	820.520
L4	58 541.550	3	435	776.340	R3X	58 448.900	3	435	812.470
L5	58 585.490	3	435	729.910	R4	58 464.320	3	435	798.800
L6	58 641.090	3	435	665.350	R5	58 470.430	3	435	792.810
L7	60 591.890	3	433	264.980	R6	58 517.220	3	435	747.020
L8	60 857.750	3	432	937.860	R7	58 557.710	3	435	704.280
L9	61 830.720	3	431	740.460	R8	58 600.750	3	435	654.440
L10	62 432.970	3	430	999.420	R9	58 751.010	3	435	470.160
L11	64 934.070	3	427	923.460	R10	59 173.220	3	434	950.700
L12	65 842.980	3	426	804.860	R11	60 586.890	3	433	211.150
L13	65 874.480	3	426	765.750	R12	60 826.910	3	432	915.790
L14	65 914.200	3	426	715.190	R13	61 809.350	3	431	706.450
L15	65 950.590	3	426	667.570	R14	62 860.180	3	430	413.980
L16	66 669.580	3	425	711.050	R15	63 358.750	3	429	801.320
L17	66 724.090	3	425	638.530	R16	63 884.110	3	429	154.420
L18	68 179.000	3	423	702.960	R17	65 814.070	3	426	781.000
L19	68 239.300	3	423	625.470	R18	65 844.960	3	426	742.310
L20	68 278.510	3	423	577.890	R19	65 884.330	3	426	692.070
L21	68 359.390	3	423	483.460	R20	65 920.410	3	426	644.770
L22	68 476.540	3	423	360.880	R21	66 666.020	3	425	652.840
L23	68 718.510	3	423	139.240	R22	66 680.720	3	425	633.290
L24	72 433.200	3	419	729.600	R23	68 147.680	3	423	681.720
L25	72 792.290	3	419	400.060	R24	68 171.260	3	423	650.970
L26	72 860.740	3	419	332.490	R25	68 211.400	3	423	600.080
L27	72 960.050	3	419	217.250	R26	68 249.280	3	423	553.980
L28	73 001.500	3	419	161.860	R27	68 288.730	3	423	507.890
L29	73 286.330	3	418	765.440	R28	68 330.040	3	423	461.530
L30	73 481.050	3	418	494.360	R29	68 435.110	3	423	351.670
L31	74 429.880	3	417	173.440	R30	68 456.950	3	423	326.250
L32	75 039.660	3	416	323.080	R31	68 478.640	3	423	306.090
L33	76 005.020	3	414	977.850	R32	68 504.770	3	423	284.630
L34	76 056.210	3	414	910.780	R33	68 672.780	3	423	129.800
L35	76 113.800	3	414	843.200	R34	71 380.450	3	420	644.980
L36	76 189.460	3	414	765.630	R35	72 384.630	3	419	722.800
L37	77 109.600	3	413	928.260	R36	72 763.980	3	419	374.660
L38	78 544.810	3	412	621.840	R37	72 832.420	3	419	307.320
L39	79 104.820	3	412	112.740	R38	72 930.790	3	419	193.360
L40	79 515.940	3	411	738.770	R39	73 337.270	3	418	628.820
L41	79 915.650	3	411	374.540	R40	73 456.250	3	418	463.550
L42	81 813.650	3	409	648.150	R41	74 202.560	3	417	424.490
L43	82 951.050	3	408	611.950	R42	75 012.150	3	416	296.360
L44	84 640.420	3	407	072.840	R43	75 651.590	3	415	405.350
L45	85 327.150	3	406	447.650	R44	76 027.590	3	414	886.000
L46	85 645.450	3	406	159.710	R45	76 087.960	3	414	815.610
L47	86 062.150	3	405	780.290	R46	76 242.050	3	414	667.030
L48	86 320.260	3	405	544.900	R47	77 005.490	3	413	971.870
L49	86 457.730	3	405	427.890	R48	77 075.790	3	413	907.850
L50	86 490.100	3	405	395.380	R49	79 081.500	3	412	083.050
L51	86 527.920	3	405	349.250	R50	79 368.850	3	411	820.970
					Vel 11 Van 13 P676/08 Sheet of				

PADRESERWE KOÖRDINATE / ROAD RESERVE CO-ORDINATES									
LINKERKANT/LEFT HAND SIDE					REGTERKANT/RIGHT HAND SIDE				
	Y		X	WG 25°		Y		X	
L52	86 651.990	3	405	170.650	R51	79 505.570	3	411	697.280
L53	86 734.360	3	405	053.810	R52	82 905.070	3	408	603.260
L54	86 787.470	3	404	968.970	R53	86 035.850	3	405	753.150
L55	87 228.950	3	404	321.860	R54	86 229.060	3	405	577.870
L56	87 430.070	3	403	960.730	R55	86 293.380	3	405	518.440
L57	87 576.990	3	403	812.020	R56	86 391.180	3	405	422.620
L58	87 642.270	3	403	719.880	R57	86 479.410	3	405	341.820
L59	87 723.050	3	403	615.270	R58	86 498.600	3	405	321.600
L60	88 709.440	3	402	395.290	R59	86 510.640	3	405	306.700
L61	88 853.640	3	402	217.010	R60	86 544.450	3	405	261.740
L62	89 018.700	3	401	998.550	R61	86 748.910	3	404	957.900
L63	89 082.680	3	401	904.760	R62	87 197.210	3	404	301.930
L64	90 234.470	3	400	276.190	R63	87 398.620	3	403	935.780
L65	92 012.160	3	397	765.350	R64	87 600.480	3	403	684.240
L66	92 077.180	3	397	676.670	R65	87 776.420	3	403	467.370
L67	92 171.480	3	397	559.440	R66	87 787.060	3	403	476.010
L68	92 348.310	3	397	350.330	R67	88 680.760	3	402	371.130
L69	92 351.110	3	397	349.460	R68	88 855.860	3	402	149.390
L70	92 366.950	3	397	366.090	R69	89 006.280	3	401	944.000
L71	92 979.600	3	396	640.900	R70	90 184.780	3	400	280.810
L72	93 067.040	3	396	540.090	R71	91 980.620	3	397	744.230
L73	93 226.310	3	396	409.730	R72	92 047.680	3	397	653.010
L74	93 519.950	3	396	220.460	R73	92 141.680	3	397	536.180
L75	93 534.950	3	396	215.530	R74	92 352.550	3	397	286.830
L76	93 814.400	3	396	133.090	R75	92 355.790	3	397	238.340
L77	93 841.740	3	396	258.240	R76	93 754.320	3	395	579.570
L78	93 870.660	3	396	283.460	R77	93 794.970	3	395	621.100
L79	93 865.480	3	396	234.830	R78	93 792.760	3	395	634.060
L80	93 853.200	3	396	119.640	R79	93 784.390	3	395	683.360
L80X	93 855.860	3	396	116.520	R80	93 784.200	3	395	684.490
L81	93 920.100	3	396	041.190	R81	93 788.160	3	395	745.790
L82	93 930.800	3	396	028.650	R82	93 807.480	3	395	823.050
L83	93 939.770	3	396	018.130	R83	93 810.360	3	395	835.280
L84	93 952.440	3	396	003.270	R84	93 825.040	3	395	894.470
L85	93 995.000	3	395	953.370	R85	93 893.240	3	395	878.540
L86	94 005.690	3	395	940.830	R86	93 905.550	3	395	875.670
L87	94 018.790	3	395	925.460	R87	93 930.940	3	395	869.740
L88	94 074.190	3	395	891.600	R88	93 977.770	3	395	849.280
L89	94 184.240	3	395	824.310	R89	93 989.690	3	395	844.070
L90	94 271.110	3	395	771.190	R90	94 028.510	3	395	827.110
L91	94 282.690	3	395	764.110	R91	94 060.640	3	395	809.620
L92	94 298.080	3	395	754.700	R92	94 171.710	3	395	749.130
L93	94 326.830	3	395	737.120	R93	94 259.530	3	395	701.310
L94	94 369.520	3	395	711.020	R94	94 271.220	3	395	694.940
L95	94 381.140	3	395	704.210	R95	94 317.960	3	395	669.480
L96	94 457.270	3	395	657.370	R96	94 358.540	3	395	644.700
L97	94 453.430	3	395	632.580	R97	94 370.120	3	395	637.630
L98	94 463.880	3	395	626.230	R98	94 457.000	3	395	584.580
L99	94 475.470	3	395	619.190	R99	94 468.580	3	395	577.500
L100	94 518.940	3	395	592.770	R100	94 522.560	3	395	544.540
L101	94 534.810	3	395	583.130	R100X	94 538.810	3	395	534.610
					<div> <div>Vel</div> <div>12</div> <div>Van</div> <div>13</div> <div>Sheet</div> <div>of</div> <div>P676/08</div> </div>				

PADRESERWE KOÖRDINATE / ROAD RESERVE CO-ORDINATES									
LINKERKANT/LEFT HAND SIDE					REGTERKANT/RIGHT HAND SIDE				
	Y		X	WG 25°				X	
L102	94 562.410	3	395	566.360	R101	94 555.480	3	395	524.430
L103	94 574.010	3	395	559.310	R102	94 567.070	3	395	517.360
L104	94 617.480	3	395	532.910	R103	94 592.530	3	395	501.810
L105	94 659.840	3	395	507.160	R104	94 621.270	3	395	484.260
L106	94 664.870	3	395	530.650	R105	94 653.960	3	395	464.300
L107	94 676.470	3	395	523.570	R106	94 665.540	3	395	457.220
L108	94 748.280	3	395	479.720	R107	94 728.710	3	395	418.650
L109	94 756.410	3	395	474.710	R108	94 751.810	3	395	400.220
L110	94 780.480	3	395	457.950	R108X	94 754.620	3	395	397.970
L110X	94 784.710	3	395	457.250	R108Y	94 766.460	3	395	391.170
L111	94 799.230	3	395	448.290	R109	94 769.280	3	395	389.920
L112	94 867.660	3	395	406.320	R110	94 776.330	3	395	386.800
L113	94 879.250	3	395	399.200	R111	94 793.470	3	395	379.210
L114	94 966.060	3	395	345.950	R112	94 813.330	3	395	366.860
L115	94 979.010	3	395	338.050	R113	94 856.750	3	395	339.850
L116	95 193.080	3	395	207.270	R114	94 868.320	3	395	332.650
L117	95 233.020	3	395	182.870	R115	94 954.950	3	395	278.770
L118	95 605.480	3	394	955.320	R116	94 967.860	3	395	270.740
L119	96 227.230	3	394	575.460	R117	95 160.250	3	395	152.940
L120	96 439.640	3	394	445.690	R118	95 200.070	3	395	128.600
L121	96 508.850	3	394	403.410	R119	95 608.810	3	394	878.680
L122	97 063.030	3	394	064.840	R120	96 330.170	3	394	438.190
L123	97 053.320	3	394	042.050	R121	96 340.390	3	394	431.930
L124	97 264.930	3	393	912.920	R122	96 415.710	3	394	385.810
L125	97 377.990	3	393	832.140	R123	96 454.370	3	394	362.140
L126	97 447.460	3	393	767.680	R124	96 534.620	3	394	313.000
L127	97 489.480	3	393	721.660	R125	97 037.420	3	394	005.150
L128	97 767.120	3	393	395.250	R126	97 038.700	3	394	007.970
					R127	97 246.550	3	393	880.050
					R128	97 354.800	3	393	802.330
					R129	97 420.420	3	393	741.310
					R130	97 463.050	3	393	694.560
					R131	97 738.050	3	393	370.520