
GOVERNMENT NOTICE

DEPARTMENT OF TRANSPORT

No. 993

12 November 2010

THE SOUTH AFRICAN NATIONAL ROADS AGENCY LIMITED

Registration No: 98/09584/06

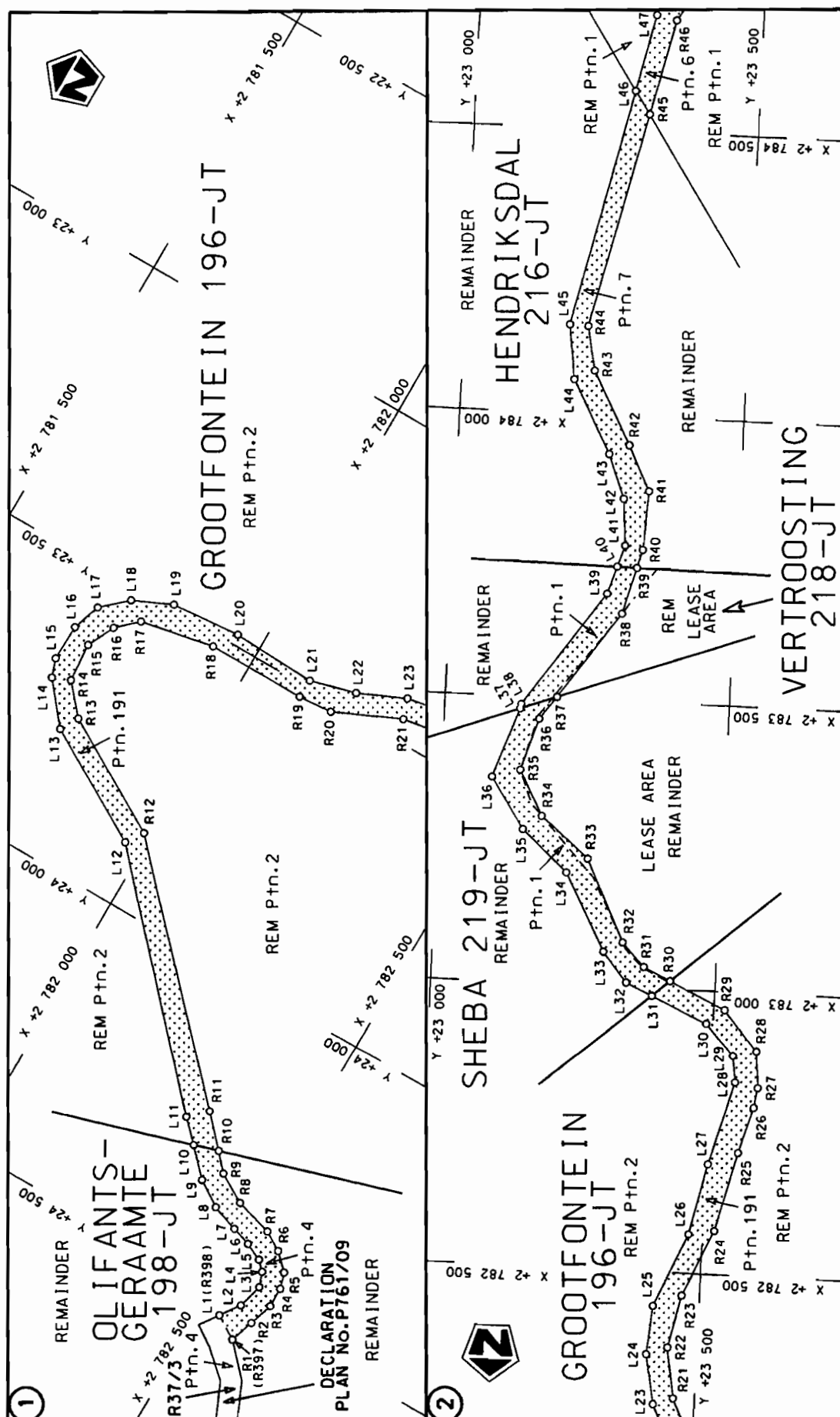
DECLARATION AMENDMENT OF NATIONAL ROAD R37 SECTION 4

AMENDMENT OF DECLARATION NO. 727 OF 2005.

By virtue of section 40(1)(b) of the South African National Roads Agency Limited and the National Roads Act, 1998 (Act No. 7 of 1998), I hereby amend Declaration No. 727 of 2005 Annexure paragraph (iii), by substituting it, with the subjoined sheets 1 to 14 of Plan No. P762/09.

(National Road R37 Section 4: Sabie Turn Off – Nelspruit)


MINISTER OF TRANSPORT (Acting Minister)

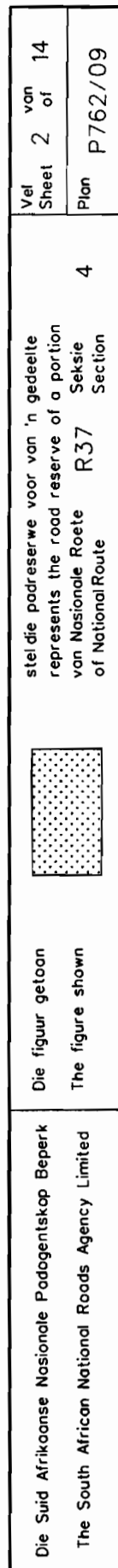


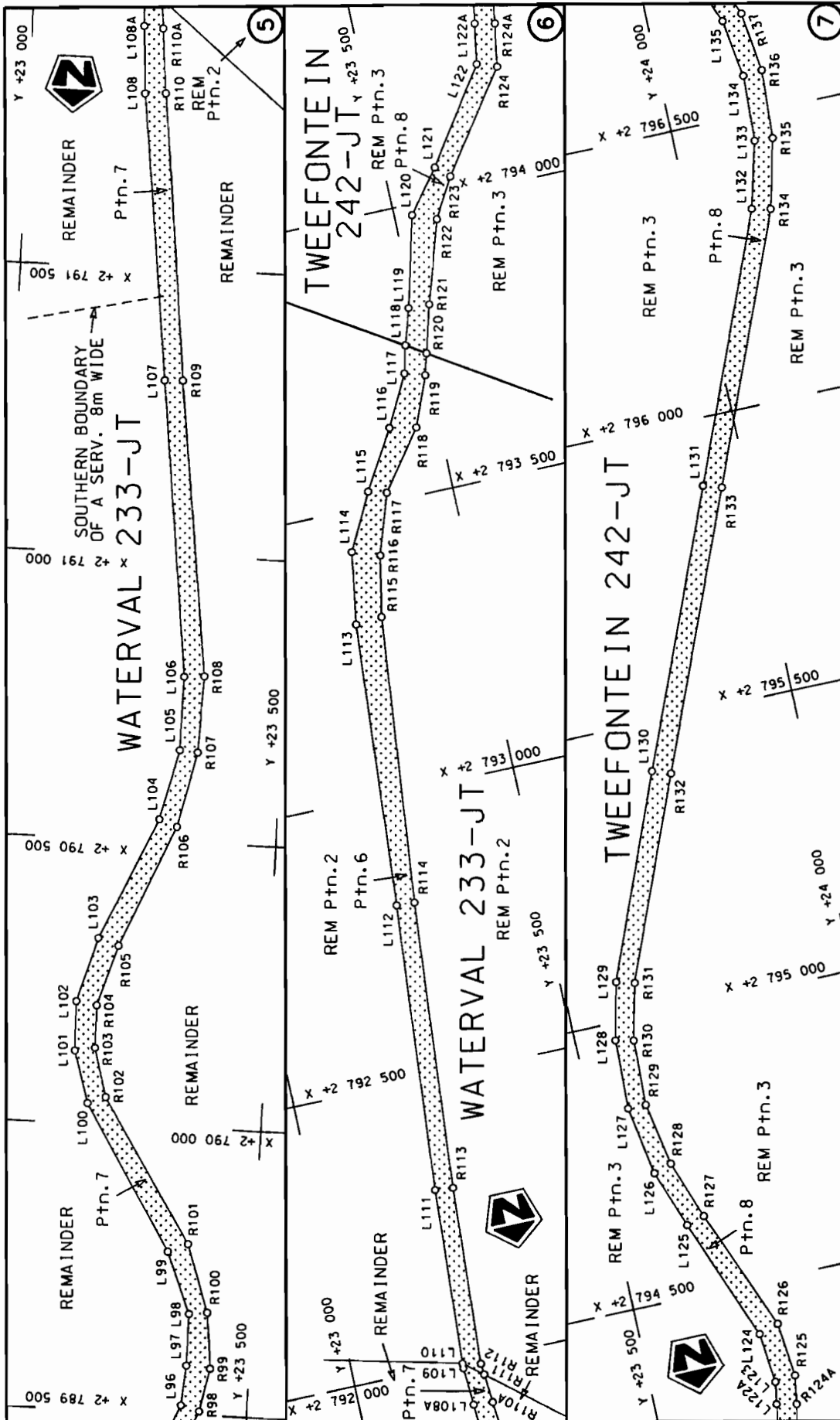
Die Suid Afrikaanse Nasionale Padagentskap Beperk
The South African National Roads Agency Limited

Die figuur getoon

steldie padreserwe voor van 'n gedeelte
represents the road reserve of a portion
van Nasionale Roete R37 Seksie
of National Route Section

Vel Sheet	1 of	von 14
Plan	P762/09	





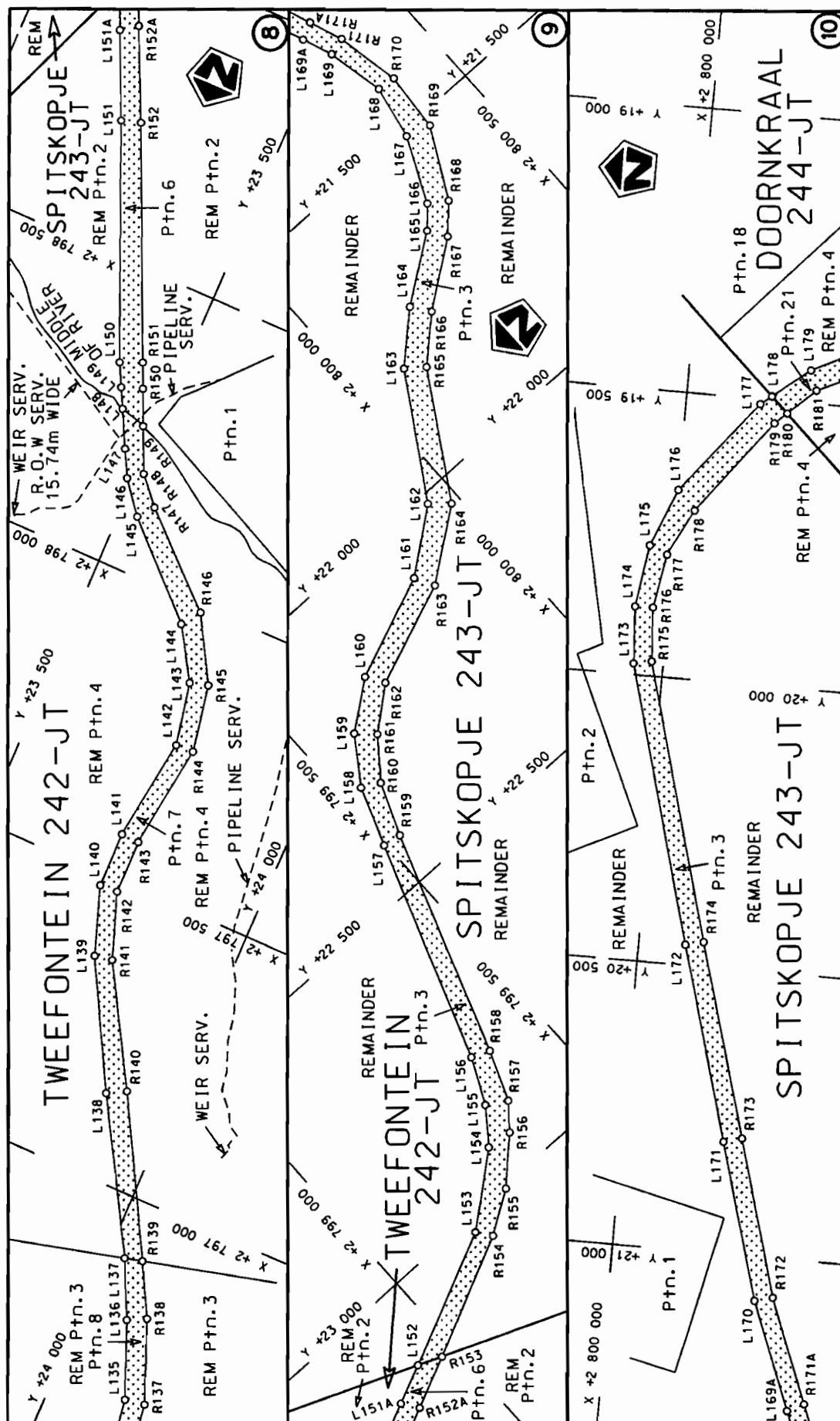
Die Suid Afrikaanse Nasionale Podogentskap Beperk
The South African National Roads Agency Limited

Die figuur getoon
The figure shown

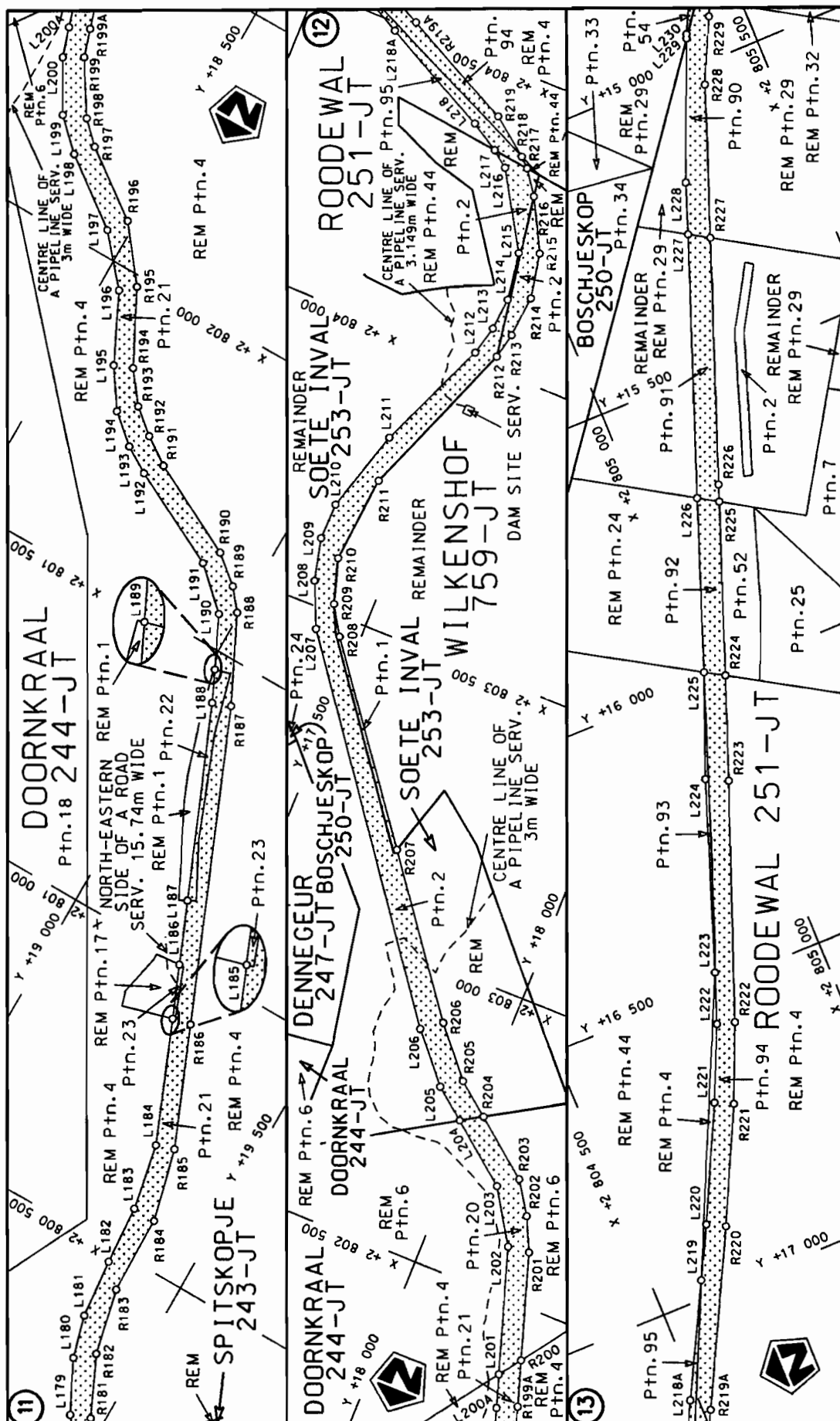


stel die podreserwe voor van 'n gedeelte
represents the road reserve of a portion
van Nasionale Roete R37
of National Route

Vel
Sheet 3 of 14
Plan P762/09



Die Suid Afrikaanse Nasionale Padagentskap Beperk The South African National Roads Agency Limited	Die figuur getoon The figure shown	steldie padreserwe voor van 'n gedeelte represents the road reserve of a portion van Nasionale Roete R37 Sektie of National Route Section	Vel Sheet 4 van of 14 Plan P762/09
--	---------------------------------------	--	---



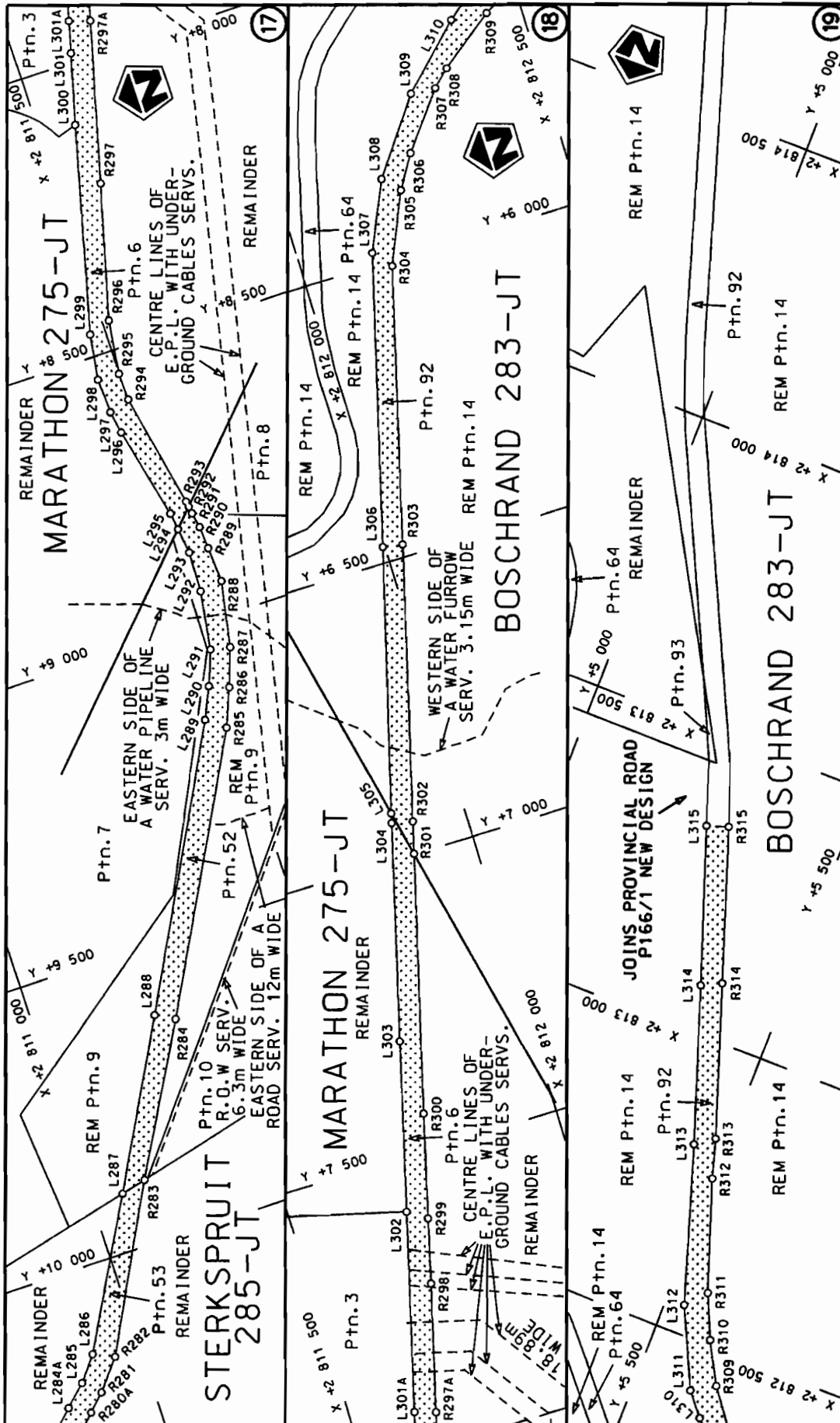
Die Suid Afrikaanse Nasionale Podogentskop Beperk
The South African National Roads Agency Limited

Die figuur getoon



steldie padreserwe voor van 'n gedeelte
represents the road reserve of a portion
van Nasionale Roete R37 Seksie
of National Route Section

Vel Sheet 5 of 14
Plan P762/09



Die Suid Afrikaanse Nasionale Padogentskap Beperk
The South African National Roads Agency Limited

Die figuur getoon
The figure shown



steldie padreserwe voor van 'n gedeelte
represents the road reserve of a portion
van Nasionale Roete R37
of National Route

Vel
Sheet 7
of 14

Plan
P762/09

PADRESERWE KOÖRDINATE				/	ROAD RESERVE CO-ORDINATES			
LINKERKANT/LEFT HAND SIDE					REGTERKANT/RIGHT HAND SIDE			
	Y	X	WG 31°			Y	X	
L1	24 530.000	2 782 532.070		R1	24 554.880	2 782 573.060		
L2	24 496.140	2 782 555.870		R2	24 513.170	2 782 587.380		
L3	24 452.260	2 782 568.060		R3	24 471.270	2 782 601.550		
L4	24 426.750	2 782 559.050		R4	24 436.280	2 782 601.710		
L5	24 411.340	2 782 543.420		R5	24 408.380	2 782 593.390		
L6	24 397.490	2 782 513.080		R6	24 381.480	2 782 565.500		
L7	24 386.800	2 782 478.880		R7	24 361.620	2 782 531.560		
L8	24 370.090	2 782 431.150		R8	24 342.100	2 782 464.440		
L9	24 340.650	2 782 385.690		R9	24 311.740	2 782 412.300		
L10	24 293.960	2 782 341.530		R10	24 280.770	2 782 384.790		
L11	24 257.090	2 782 304.800		R11	24 227.940	2 782 335.320		
L12	23 894.870	2 781 966.810		R12	23 864.400	2 781 987.330		
L13	23 781.060	2 781 767.110		R13	23 749.590	2 781 785.660		
L14	23 711.280	2 781 709.040		R14	23 698.410	2 781 740.560		
L15	23 678.820	2 781 697.600		R15	23 629.690	2 781 735.000		
L16	23 614.470	2 781 699.460		R16	23 581.090	2 781 758.770		
L17	23 564.810	2 781 716.400		R17	23 547.530	2 781 795.060		
L18	23 524.050	2 781 761.270		R18	23 521.230	2 781 926.670		
L19	23 492.690	2 781 830.000		R19	23 520.470	2 782 103.900		
L20	23 481.550	2 781 954.190		R20	23 515.660	2 782 164.240		
L21	23 487.290	2 782 105.080		R21	23 462.530	2 782 280.790		
L22	23 465.120	2 782 186.310		R22	23 448.210	2 782 369.730		
L23	23 428.020	2 782 268.910		R23	23 468.720	2 782 461.260		
L24	23 411.770	2 782 356.280		R24	23 520.070	2 782 575.870		
L25	23 419.130	2 782 440.900		R25	23 554.900	2 782 716.580		
L26	23 475.160	2 782 567.770		R26	23 578.480	2 782 797.940		
L27	23 503.200	2 782 694.030		R27	23 583.940	2 782 833.150		
L28	23 543.490	2 782 841.370		R28	23 578.390	2 782 898.450		
L29	23 537.360	2 782 888.760		R29	23 518.870	2 782 968.560		
L30	23 487.870	2 782 943.250		R30	23 420.620	2 783 014.430		
L31	23 389.750	2 782 987.470		R31	23 373.230	2 783 036.650		
L32	23 343.690	2 783 008.330		R32	23 333.680	2 783 077.820		
L33	23 301.030	2 783 060.020		R33	23 264.920	2 783 222.130		
L34	23 228.830	2 783 195.950		R34	23 180.460	2 783 292.510		
L35	23 148.620	2 783 267.790		R35	23 138.760	2 783 372.170		
L36	23 089.730	2 783 357.710		R36	23 167.140	2 783 462.230		
L37	23 133.100	2 783 478.710		R37	23 196.820	2 783 501.720		
L38	23 134.770	2 783 486.700		R38	23 303.200	2 783 653.060		
L39	23 275.410	2 783 686.910		R39	23 325.350	2 783 735.160		
L40	23 290.630	2 783 735.480		R40	23 334.180	2 783 767.300		
L41	23 302.700	2 783 773.290		R41	23 339.440	2 783 871.070		
L42	23 295.990	2 783 855.720		R42	23 301.070	2 783 949.080		
L43	23 266.490	2 783 932.410		R43	23 233.810	2 784 076.640		
L44	23 198.700	2 784 059.840		R44	23 218.410	2 784 153.720		
L45	23 185.870	2 784 155.180		R45	23 307.560	2 784 530.650		
L46	23 281.060	2 784 571.200		R46	23 347.150	2 784 698.440		
L47	23 311.800	2 784 706.030		R47	23 363.990	2 784 725.140		
L48	23 330.420	2 784 756.460		R48	23 385.640	2 784 751.590		
L49	23 355.300	2 784 788.190		R49	23 447.030	2 784 784.160		
L50	23 425.410	2 784 824.520		R50	23 687.600	2 784 822.170		
L51	23 619.190	2 784 848.170		R51	23 730.220	2 784 838.100		
					Vel 8	Van 14	P762/09	
					Sheet	of		

PADRESERWE KOÖRDINATE				/	ROAD RESERVE CO-ORDINATES			
LINKERKANT/LEFT HAND SIDE					REGTERKANT/RIGHT HAND SIDE			
	Y	X	WG 31°			Y	X	
L52	23 716.240	2 784 884.480		R52	23 781.820	2 784 905.340		
L53	23 759.830	2 784 965.980		R53	23 802.130	2 784 972.640		
L54	23 749.180	2 785 015.730		R54	23 783.040	2 785 042.050		
L55	23 728.280	2 785 071.630		R55	23 753.250	2 785 103.540		
L56	23 670.840	2 785 142.840		R56	23 698.540	2 785 168.240		
L57	23 335.660	2 785 396.230		R57	23 361.150	2 785 427.680		
L58	23 288.720	2 785 447.030		R58	23 320.260	2 785 463.600		
L59	23 252.840	2 785 510.830		R59	23 286.150	2 785 522.100		
L60	23 239.600	2 785 582.210		R60	23 275.510	2 785 583.660		
L61	23 249.080	2 785 657.580		R61	23 285.170	2 785 649.040		
L62	23 336.860	2 785 840.330		R62	23 375.240	2 785 825.610		
L63	23 356.620	2 785 893.770		R63	23 391.950	2 785 891.650		
L64	23 342.740	2 785 990.200		R64	23 392.220	2 785 957.980		
L65	23 311.970	2 786 056.890		R65	23 379.860	2 786 005.720		
L66	23 223.770	2 786 143.770		R66	23 343.460	2 786 069.430		
L67	23 171.770	2 786 216.010		R67	23 251.240	2 786 165.500		
L68	23 152.970	2 786 294.410		R68	23 208.480	2 786 226.840		
L69	23 159.870	2 786 364.780		R69	23 190.130	2 786 295.560		
L70	23 203.340	2 786 457.190		R70	23 192.830	2 786 358.800		
L71	23 240.940	2 786 496.320		R71	23 234.880	2 786 439.450		
L72	23 363.340	2 786 594.710		R72	23 264.440	2 786 465.370		
L73	23 413.470	2 786 653.150		R73	23 393.160	2 786 572.940		
L74	23 433.400	2 786 748.230		R74	23 447.930	2 786 643.270		
L75	23 414.420	2 786 821.640		R75	23 465.240	2 786 688.910		
L76	23 377.820	2 786 875.440		R76	23 465.000	2 786 752.000		
L77	23 294.600	2 786 944.460		R77	23 445.950	2 786 830.800		
L78	23 219.890	2 787 033.820		R78	23 409.330	2 786 890.980		
L79	23 184.730	2 787 107.400		R79	23 320.790	2 786 974.540		
L80	23 172.150	2 787 212.180		R80	23 251.370	2 787 047.890		
L81	23 208.270	2 787 639.430		R81	23 219.630	2 787 113.220		
L82	23 212.970	2 787 709.150		R82	23 209.530	2 787 212.180		
L83	23 234.160	2 787 793.610		R83	23 241.380	2 787 646.710		
L84	23 311.820	2 787 929.730		R84	23 244.470	2 787 705.700		
L85	23 591.420	2 788 339.950		R85	23 265.630	2 787 783.850		
L86	23 643.930	2 788 450.040		R86	23 343.270	2 787 913.340		
L87	23 651.510	2 788 540.830		R87	23 622.910	2 788 330.510		
L88	23 632.140	2 788 640.070		R88	23 681.560	2 788 454.470		
L89	23 592.760	2 788 711.210		R89	23 689.810	2 788 530.850		
L90	23 540.650	2 788 770.230		R90	23 666.910	2 788 649.510		
L91	23 368.360	2 788 888.920		R91	23 624.340	2 788 726.530		
L92	23 297.840	2 788 982.880		R92	23 564.720	2 788 791.390		
L93	23 255.530	2 789 147.590		R93	23 399.900	2 788 905.200		
L94	23 262.180	2 789 216.400		R94	23 329.360	2 788 997.430		
L95	23 293.120	2 789 308.950		R95	23 290.420	2 789 141.760		
L96	23 383.820	2 789 515.850		R96	23 297.300	2 789 201.530		
L97	23 389.570	2 789 585.720		R97	23 324.630	2 789 297.480		
L98	23 389.610	2 789 675.770		R98	23 415.830	2 789 506.770		
L99	23 347.360	2 789 781.800		R99	23 431.220	2 789 582.240		
L100	23 193.090	2 790 036.070		R100	23 421.330	2 789 679.530		
L101	23 166.010	2 790 127.860		R101	23 381.970	2 789 796.370		
L102	23 164.090	2 790 215.080		R102	23 224.600	2 790 047.920		
					Vel 9	Van 14	P762/09	
					Sheet	of		

PADRESERWE KOÖRDINATE					/ ROAD RESERVE CO-ORDINATES				
LINKERKANT/LEFT HAND SIDE					REGTERKANT/RIGHT HAND SIDE				
	Y	X	WG	31°		Y	X		
L103	23 197.180	2 790 326.920			R103	23 201.130	2 790 134.540		
L104	23 292.820	2 790 538.620			R104	23 200.370	2 790 209.920		
L105	23 322.520	2 790 661.510			R105	23 233.150	2 790 315.160		
L106	23 323.380	2 790 790.150			R106	23 324.190	2 790 526.750		
L107	23 263.170	2 791 306.150			R107	23 354.010	2 790 658.910		
L108	23 203.940	2 791 805.970			R108	23 358.620	2 790 792.470		
L109	23 192.660	2 791 990.400			R109	23 294.670	2 791 307.050		
L110	23 193.150	2 791 999.030			R110	23 240.250	2 791 807.930		
L111	23 209.980	2 792 304.340			R111	23 225.750	2 791 972.050		
L112	23 249.860	2 792 808.310			R112	23 224.140	2 791 991.520		
L113	23 284.050	2 793 302.260			R113	23 241.480	2 792 301.490		
L114	23 303.600	2 793 427.710			R114	23 281.370	2 792 806.260		
L115	23 353.700	2 793 525.150			R115	23 330.290	2 793 305.510		
L116	23 413.820	2 793 626.440			R116	23 351.030	2 793 411.180		
L117	23 459.360	2 793 713.320			R117	23 385.230	2 793 516.510		
L118	23 471.350	2 793 760.560			R118	23 460.040	2 793 617.190		
L119	23 490.700	2 793 823.330			R119	23 494.290	2 793 702.790		
L120	23 530.870	2 793 980.960			R120	23 504.630	2 793 739.470		
L121	23 587.450	2 794 054.410			R121	23 527.350	2 793 822.040		
L122	23 697.740	2 794 215.630			R122	23 571.830	2 793 964.750		
L123	23 715.900	2 794 323.620			R123	23 610.960	2 794 033.550		
L124	23 706.300	2 794 411.260			R124	23 731.730	2 794 203.560		
L125	23 622.840	2 794 622.830			R125	23 752.060	2 794 327.480		
L126	23 586.320	2 794 724.650			R126	23 740.960	2 794 422.410		
L127	23 565.680	2 794 845.690			R127	23 654.340	2 794 632.080		
L128	23 569.800	2 794 968.790			R128	23 617.830	2 794 734.770		
L129	23 592.270	2 795 068.350			R129	23 597.190	2 794 845.420		
L130	23 731.520	2 795 414.870			R130	23 601.010	2 794 961.750		
L131	23 923.370	2 795 882.930			R131	23 623.740	2 795 060.100		
L132	24 108.750	2 796 337.650			R132	23 763.030	2 795 403.940		
L133	24 138.840	2 796 452.940			R133	23 954.860	2 795 872.870		
L134	24 143.990	2 796 568.510			R134	24 141.200	2 796 330.020		
L135	24 129.170	2 796 669.110			R135	24 170.800	2 796 450.990		
L136	24 076.030	2 796 799.480			R136	24 177.570	2 796 570.950		
L137	24 030.130	2 796 896.400			R137	24 163.990	2 796 675.110		
L138	23 885.340	2 797 147.250			R138	24 107.560	2 796 815.400		
L139	23 769.250	2 797 362.790			R139	24 060.810	2 796 904.270		
L140	23 729.170	2 797 480.570			R140	23 917.490	2 797 165.030		
L141	23 728.490	2 797 577.260			R141	23 800.730	2 797 368.240		
L142	23 753.180	2 797 757.990			R142	23 760.670	2 797 482.070		
L143	23 731.510	2 797 867.760			R143	23 759.990	2 797 576.060		
L144	23 676.900	2 797 956.260			R144	23 784.740	2 797 759.400		
L145	23 531.130	2 798 097.210			R145	23 762.940	2 797 876.660		
L146	23 487.830	2 798 151.860			R146	23 699.370	2 797 988.000		
L147	23 464.190	2 798 197.590			R147	23 552.350	2 798 124.230		
L148	23 432.074	2 798 260.014			R148	23 511.550	2 798 170.370		
L149	23 414.820	2 798 293.550			R149	23 477.582	2 798 246.577		
L150	23 394.650	2 798 332.730			R150	23 450.850	2 798 306.550		
L151	23 227.010	2 798 721.000			R151	23 432.120	2 798 348.550		
L152	23 130.950	2 798 932.840			R152	23 260.240	2 798 731.210		
L153	23 025.110	2 799 162.820			R153	23 147.590	2 798 974.280		
					<div> <div> Ve1 Sheet </div> <div> 10 of </div> <div> Van 14 </div> <div> P762/09 </div> </div>				

PADRESERWE KOÖRDINATE				/	ROAD RESERVE CO-ORDINATES			
LINKERKANT/LEFT HAND SIDE					REGTERKANT/RIGHT HAND SIDE			
	Y	X	WG	31°		Y	X	
L154	22 931.050	2 799 278.390			R154	23 050.080	2 799 181.620	
L155	22 871.620	2 799 323.740			R155	23 004.140	2 799 253.060	
L156	22 792.240	2 799 361.600			R156	22 935.920	2 799 322.930	
L157	22 411.150	2 799 496.710			R157	22 892.610	2 799 358.770	
L158	22 309.580	2 799 533.340			R158	22 805.580	2 799 393.110	
L159	22 230.680	2 799 587.670			R159	22 416.490	2 799 528.850	
L160	22 169.130	2 799 668.070			R160	22 326.240	2 799 564.840	
L161	22 097.010	2 799 847.810			R161	22 258.580	2 799 617.080	
L162	22 016.790	2 799 951.930			R162	22 200.620	2 799 687.910	
L163	21 812.290	2 800 078.190			R163	22 130.800	2 799 866.240	
L164	21 738.080	2 800 158.020			R164	22 043.950	2 799 983.420	
L165	21 658.700	2 800 269.210			R165	21 836.400	2 800 109.690	
L166	21 623.430	2 800 300.720			R166	21 769.580	2 800 181.170	
L167	21 511.400	2 800 352.120			R167	21 690.150	2 800 289.480	
L168	21 416.790	2 800 371.590			R168	21 644.530	2 800 332.200	
L169	21 316.220	2 800 349.880			R169	21 524.290	2 800 395.240	
L170	21 076.150	2 800 256.170			R170	21 420.200	2 800 403.220	
L171	20 805.810	2 800 178.690			R171	21 307.880	2 800 380.630	
L172	20 463.110	2 800 081.730			R172	21 068.260	2 800 287.660	
L173	19 980.310	2 799 948.370			R173	20 797.160	2 800 210.600	
L174	19 880.690	2 799 942.110			R174	20 456.290	2 800 113.220	
L175	19 772.170	2 799 958.850			R175	19 974.310	2 799 979.850	
L176	19 671.610	2 800 000.260			R176	19 879.980	2 799 973.600	
L177	19 509.040	2 800 129.150			R177	19 785.410	2 799 990.360	
L178	19 493.590	2 800 148.390			R178	19 704.830	2 800 031.700	
L179	19 442.360	2 800 212.210			R179	19 540.560	2 800 156.690	
L180	19 397.420	2 800 301.200			R180	19 521.230	2 800 177.370	
L181	19 377.510	2 800 374.510			R181	19 476.700	2 800 224.960	
L182	19 368.050	2 800 476.820			R182	19 428.910	2 800 327.300	
L183	19 360.460	2 800 580.280			R183	19 403.600	2 800 441.540	
L184	19 338.070	2 800 695.930			R184	19 401.530	2 800 578.650	
L185	19 251.400	2 800 903.630			R185	19 369.590	2 800 706.100	
L186	19 214.190	2 800 991.800			R186	19 283.580	2 800 910.400	
L187	19 170.470	2 801 096.210			R187	19 067.550	2 801 427.610	
L188	19 036.050	2 801 416.010			R188	18 995.080	2 801 574.510	
L189	19 010.560	2 801 468.950			R189	18 965.320	2 801 611.030	
L190	18 968.390	2 801 556.490			R190	18 916.680	2 801 651.270	
L191	18 899.360	2 801 620.370			R191	18 754.530	2 801 733.500	
L192	18 731.300	2 801 705.120			R192	18 706.680	2 801 766.080	
L193	18 685.510	2 801 732.870			R193	18 663.730	2 801 801.740	
L194	18 635.630	2 801 775.830			R194	18 622.800	2 801 855.070	
L195	18 590.930	2 801 842.510			R195	18 557.740	2 801 981.530	
L196	18 533.630	2 801 960.360			R196	18 486.260	2 802 073.360	
L197	18 463.030	2 802 041.800			R197	18 371.400	2 802 157.010	
L198	18 346.490	2 802 128.100			R198	18 334.300	2 802 193.580	
L199	18 294.750	2 802 178.030			R199	18 276.310	2 802 285.800	
L200	18 243.720	2 802 267.070			R200	18 235.900	2 802 411.310	
L201	18 209.120	2 802 374.010			R201	18 178.400	2 802 589.950	
L202	18 140.680	2 802 585.500			R202	18 150.750	2 802 648.200	
L203	18 082.350	2 802 677.920			R203	18 113.830	2 802 703.580	
L204	17 978.890	2 802 759.680			R204	18 014.850	2 802 781.560	
					Vel	11	Van	14
					Sheet		of	P762/09

PADRESERWE KOÖRDINATE					ROAD RESERVE CO-ORDINATES				
LINKERKANT/LEFT HAND SIDE					REGTERKANT/RIGHT HAND SIDE				
	Y		X	WG	31°	Y		X	
L205	17 925.140	2	802 802.150		R205	17 958.070	2	802 826.270	
L206	17 854.080	2	802 884.230		R206	17 887.380	2	802 908.860	
L207	17 421.770	2	803 463.630		R207	17 698.210	2	803 159.030	
L208	17 387.660	2	803 540.970		R208	17 465.130	2	803 466.400	
L209	17 370.040	2	803 614.220		R209	17 434.610	2	803 515.880	
L210	17 371.580	2	803 678.040		R210	17 410.990	2	803 593.120	
L211	17 414.570	2	803 821.900		R211	17 425.580	2	803 744.810	
L212	17 497.710	2	804 015.710		R212	17 535.180	2	804 023.050	
L213	17 510.290	2	804 066.360		R213	17 545.240	2	804 067.870	
L214	17 515.510	2	804 122.390		R214	17 552.310	2	804 139.600	
L215	17 503.200	2	804 204.640		R215	17 537.520	2	804 217.540	
L216	17 424.630	2	804 334.000		R216	17 490.450	2	804 306.710	
L217	17 396.410	2	804 355.670		R217	17 460.940	2	804 347.500	
L218	17 346.560	2	804 386.020		R218	17 444.520	2	804 363.090	
L219	16 969.540	2	804 583.900		R219	17 379.740	2	804 412.910	
L220	16 882.730	2	804 629.480		R220	16 898.750	2	804 659.910	
L221	16 690.220	2	804 724.130		R221	16 704.950	2	804 754.610	
L222	16 563.440	2	804 780.970		R222	16 572.450	2	804 811.190	
L223	16 478.210	2	804 812.300		R223	16 178.410	2	804 961.320	
L224	16 159.960	2	804 924.610		R224	16 005.380	2	805 026.130	
L225	15 985.740	2	804 993.560		R225	15 720.110	2	805 131.620	
L226	15 699.570	2	805 098.230		R226	15 692.000	2	805 141.990	
L227	15 267.240	2	805 258.630		R227	15 287.870	2	805 292.180	
L228	15 181.910	2	805 289.230		R228	15 035.280	2	805 386.090	
L229	14 948.480	2	805 387.540		R229	14 927.700	2	805 438.330	
L230	14 941.570	2	805 390.340		R230	14 903.260	2	805 450.630	
L231	14 888.310	2	805 417.000		R231	14 858.000	2	805 473.480	
L232	14 824.730	2	805 450.950		R232	14 729.510	2	805 554.350	
L233	14 807.170	2	805 461.840		R233	14 560.940	2	805 680.820	
L234	14 705.240	2	805 529.510		R234	14 394.310	2	805 804.660	
L235	14 553.440	2	805 640.610		R235	14 176.290	2	805 970.990	
L236	14 376.180	2	805 774.360		R236	14 118.080	2	806 020.560	
L237	14 360.780	2	805 785.870		R237	14 044.670	2	806 097.480	
L238	14 148.630	2	805 946.720		R238	13 998.800	2	806 179.340	
L239	14 075.020	2	806 008.760		R239	13 962.540	2	806 259.340	
L240	14 029.450	2	806 059.730		R240	13 938.140	2	806 329.520	
L241	13 998.740	2	806 102.290		R241	13 826.550	2	806 650.870	
L242	13 955.770	2	806 182.900		R242	13 719.290	2	806 962.130	
L243	13 911.940	2	806 294.690		R243	13 661.650	2	807 127.760	
L244	13 777.630	2	806 676.710		R244	13 651.820	2	807 155.940	
L245	13 624.620	2	807 110.340		R245	13 612.330	2	807 244.140	
L246	13 612.510	2	807 142.680		R246	13 592.470	2	807 277.250	
L247	13 588.520	2	807 206.740		R247	13 569.560	2	807 314.910	
L248	13 566.240	2	807 249.120		R248	13 516.390	2	807 378.190	
L249	13 536.220	2	807 293.230		R249	13 462.550	2	807 424.830	
L250	13 488.350	2	807 348.950		R250	13 418.780	2	807 456.150	
L251	13 442.200	2	807 391.710		R251	13 298.230	2	807 544.400	
L252	13 399.850	2	807 427.040		R252	13 272.400	2	807 564.200	
L253	13 356.040	2	807 457.820		R253	13 239.450	2	807 594.650	
L254	13 273.810	2	807 515.630		R254	13 215.330	2	807 616.950	
L255	13 247.830	2	807 535.640		R255	13 164.840	2	807 673.760	
					Vel	12	Van	14	P762/09
					Sheet		of		

PADRESERWE KOÖRDINATE				/	ROAD RESERVE CO-ORDINATES			
LINKERKANT/LEFT HAND SIDE					REGTERKANT/RIGHT HAND SIDE			
	Y	X	WG	31°		Y	X	
L256	13 219.620	2 807 561.640			R256	13 112.700	2 807 743.280	
L257	13 168.090	2 807 613.020			R257	12 990.000	2 807 906.870	
L258	13 126.890	2 807 661.480			R258	12 922.320	2 807 997.070	
L259	13 019.140	2 807 812.890			R259	12 872.920	2 808 063.150	
L260	12 974.090	2 807 872.090			R260	12 753.160	2 808 223.340	
L261	12 853.270	2 808 030.540			R261	12 633.400	2 808 383.520	
L262	12 732.490	2 808 189.010			R262	12 616.930	2 808 405.530	
L263	12 705.460	2 808 224.480			R263	12 493.550	2 808 570.580	
L264	12 592.670	2 808 374.960			R264	12 318.140	2 808 806.030	
L265	12 463.110	2 808 546.570			R265	12 097.440	2 809 102.280	
L266	12 287.850	2 808 782.380			R266	11 917.380	2 809 343.970	
L267	12 065.650	2 809 079.970			R267	11 848.670	2 809 448.440	
L268	11 921.280	2 809 273.330			R268	11 709.530	2 809 660.170	
L269	11 838.920	2 809 391.550			R269	11 580.450	2 809 856.550	
L270	11 819.780	2 809 420.430			R270	11 517.550	2 809 924.340	
L271	11 677.700	2 809 637.890			R271	11 484.270	2 809 951.130	
L272	11 553.070	2 809 828.300			R272	11 445.360	2 809 982.570	
L273	11 547.130	2 809 835.610			R273	11 386.190	2 810 020.540	
L274	11 514.370	2 809 875.930			R274	11 057.230	2 810 196.370	
L275	11 460.770	2 809 926.390			R275	10 697.040	2 810 386.790	
L276	11 440.140	2 809 940.450			R276	10 686.790	2 810 393.210	
L277	11 370.660	2 809 987.840			R277	10 609.000	2 810 436.740	
L278	11 208.800	2 810 073.770			R278	10 546.520	2 810 483.310	
L279	11 006.460	2 810 181.250			R279	10 477.020	2 810 556.770	
L280	10 668.330	2 810 360.420			R280	10 298.640	2 810 826.230	
L281	10 576.940	2 810 411.370			R281	10 214.960	2 810 912.170	
L282	10 520.550	2 810 455.410			R282	10 164.050	2 810 954.040	
L283	10 454.830	2 810 524.200			R283	9 888.340	2 811 100.270	
L284	10 270.640	2 810 797.450			R284	9 637.660	2 811 240.000	
L285	10 188.770	2 810 884.810			R285	9 185.980	2 811 483.690	
L286	10 147.390	2 810 918.220			R286	9 120.840	2 811 510.320	
L287	9 899.110	2 811 056.280			R287	9 055.010	2 811 533.790	
L288	9 619.640	2 811 207.360			R288	8 940.230	2 811 555.660	
L289	9 161.180	2 811 452.200			R289	8 878.670	2 811 551.560	
L290	9 107.620	2 811 477.080			R290	8 838.960	2 811 548.950	
L291	9 047.810	2 811 499.790			R291	8 812.090	2 811 543.870	
L292	8 945.750	2 811 515.470			R292	8 799.540	2 811 542.190	
L293	8 875.330	2 811 517.830			R293	8 789.270	2 811 540.480	
L294	8 830.840	2 811 512.050			R294	8 590.070	2 811 500.550	
L295	8 800.680	2 811 508.150			R295	8 542.220	2 811 499.170	
L296	8 640.380	2 811 470.890			R296	8 448.520	2 811 511.650	
L297	8 601.230	2 811 463.980			R297	8 217.170	2 811 573.870	
L298	8 540.540	2 811 461.150			R298	7 725.950	2 811 703.070	
L299	8 461.180	2 811 473.140			R299	7 615.660	2 811 731.400	
L300	8 106.570	2 811 564.080			R300	7 437.110	2 811 777.710	
L301	7 984.370	2 811 596.220			R301	6 998.700	2 811 893.200	
L302	7 593.450	2 811 699.040			R302	6 944.750	2 811 907.410	
L303	7 302.930	2 811 774.830			R303	6 478.050	2 812 030.510	
L304	6 936.530	2 811 871.220			R304	6 009.770	2 812 153.920	
L305	6 920.290	2 811 875.540			R305	5 887.930	2 812 206.380	
L306	6 472.160	2 811 996.360			R306	5 831.230	2 812 241.330	
				Vel	13	Van	14	P762/09
				Sheet		of		

PADRESERWE KOÖRDINATE				/	ROAD RESERVE CO-ORDINATES			
LINKERKANT/LEFT HAND SIDE					REGTERKANT/RIGHT HAND SIDE			
	Y	X	WG	31°		Y	X	
L307	5 977.520	2 812 127.350			R307	5 735.400	2 812 315.800	
L308	5 859.290	2 812 180.200			R308	5 707.360	2 812 345.000	
L309	5 732.460	2 812 272.430			R309	5 635.410	2 812 440.110	
L310	5 628.910	2 812 377.750			R310	5 596.780	2 812 509.910	
L311	5 596.510	2 812 416.630			R311	5 563.620	2 812 584.060	
L312	5 532.900	2 812 550.010			R312	5 498.080	2 812 773.570	
L313	5 446.520	2 812 818.300			R313	5 478.180	2 812 841.100	
L314	5 356.730	2 813 081.240			R314	5 390.250	2 813 097.950	
L315	5 265.310	2 813 342.630			R315	5 301.990	2 813 355.120	