
GOVERNMENT NOTICE

DEPARTMENT OF TRANSPORT

No. 958

26 October 2010

THE SOUTH AFRICAN NATIONAL ROADS AGENCY LIMITED

Registration No: 98/09584/06

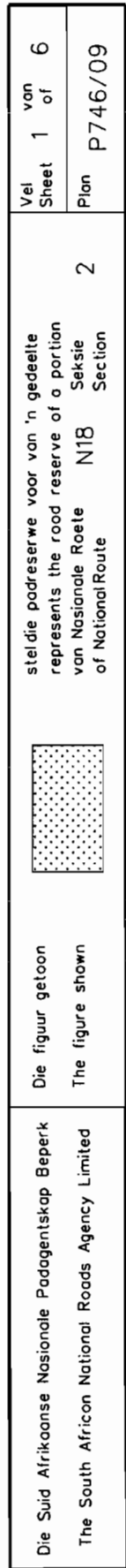
DECLARATION AMENDMENT OF NATIONAL ROAD N18 SECTION 2

AMENDMENT OF DECLARATION NO. 731 OF 2005

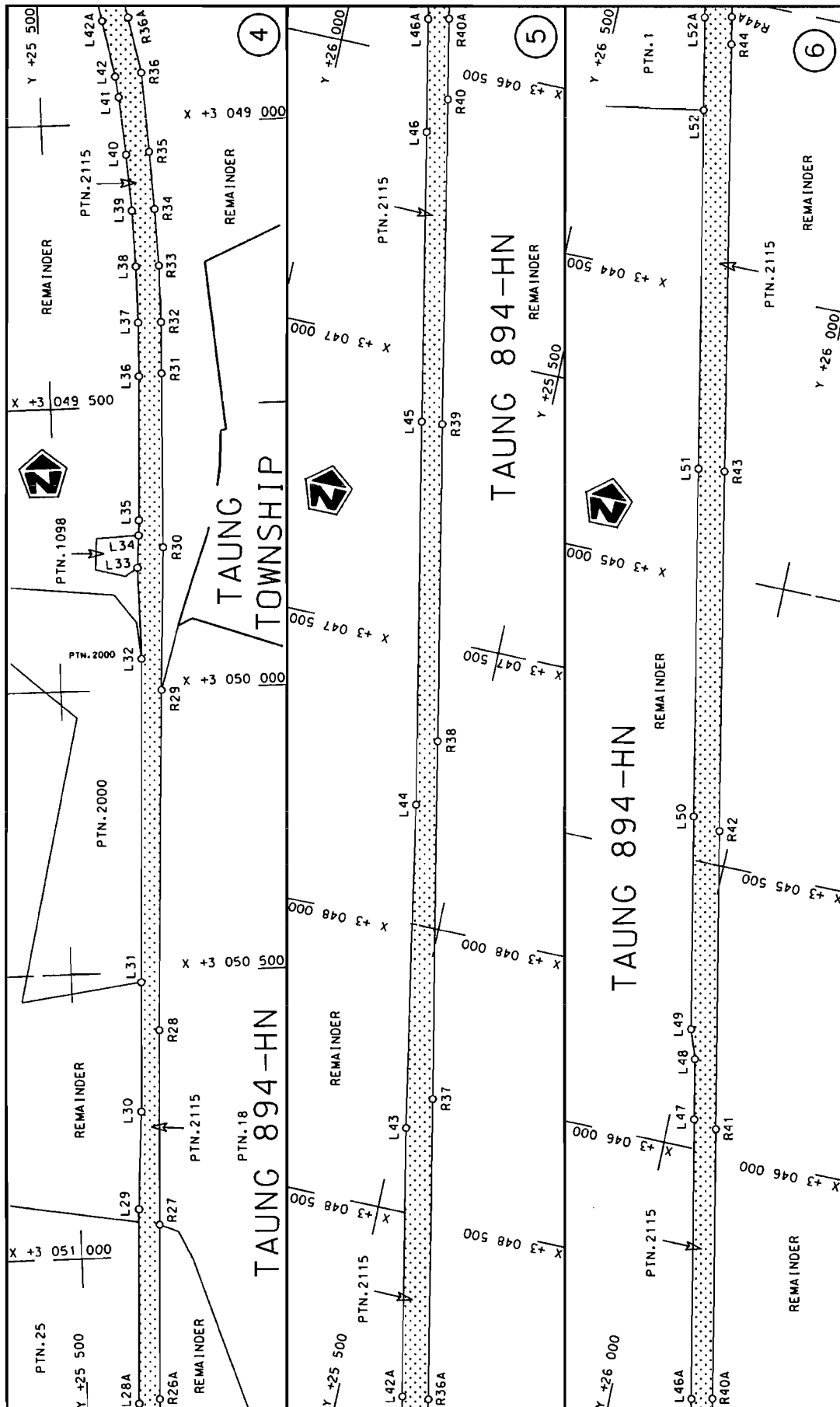
By virtue of section 40(1)(b) of the South African National Roads Agency Limited and the National Roads Act, 1998 (Act No. 7 of 1998), I hereby amend Declaration No. 731 of 2005 by substituting the Annexure paragraph (I), the descriptive section from the Northern Cape border up to Pudumong, with the subjoined sheets 1 to 6 of Plan No. P746/09.

(National Road N18 Section 2: Northern Cape border - Pudumong)

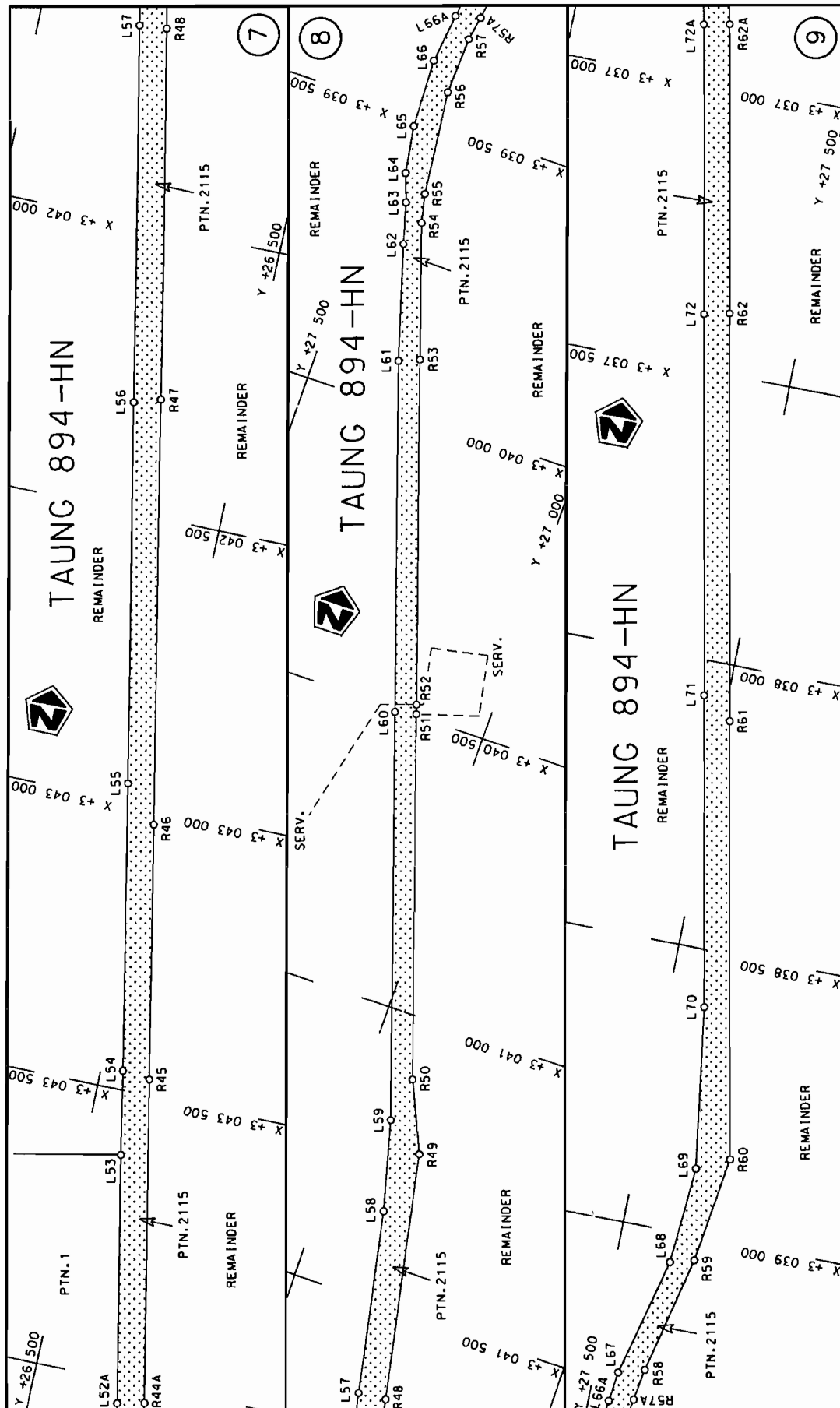

MINISTER OF TRANSPORT




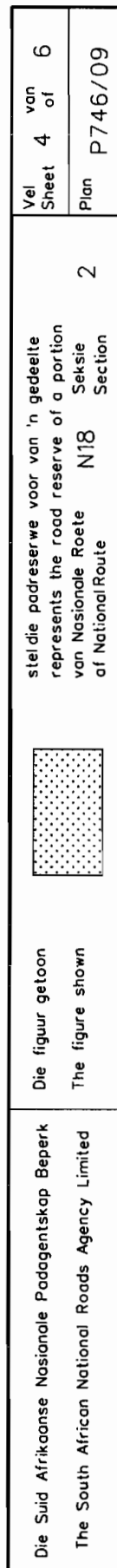
steldie padreserwe voor van 'n gedeelte
represents the rood reserve of a portion
van Nasionale Roete N18 Seksie
of National Route Section



Die Suid Afrikaanse Nasionale Padagentskap Beperk The South African National Roads Agency Limited	Die figuur getoon The figure shown	steldie padreserwe voor van 'n gedeelte represents the road reserve of a portion van Nasionale Roete N18 of National Route 2	Vel Sheet 2 van of 6 Plan P746/09
--	---------------------------------------	--	--



Die Suid Afrikaanse Nasionale Padagentskap Beperk The South African National Roads Agency Limited	<p>Die figuur getoon</p>  <p>The figure shown</p>	<p>steldie padreserwe voor van 'n gedeelte represents the road reserve of a portion van Nasionale Roete N18 of National Route</p>	<p>Vel Sheet 3 van 6</p>
		2	<p>Plan P746/09</p>



PADRESERWE KOÖRDINATE / ROAD RESERVE CO-ORDINATES									
LINKERKANT/LEFT HAND SIDE					REGTERKANT/RIGHT HAND SIDE				
	Y		X	WG 25°		Y		X	
L1	23 575.510	3 057	824.310		R1	23 539.880	3 057	817.170	
L2	23 679.820	3 057	303.770		R2	23 644.350	3 057	297.670	
L3	23 778.600	3 056	859.170		R3	23 734.990	3 056	845.000	
L4	23 865.590	3 056	426.120		R4	23 821.170	3 056	413.370	
L5	24 014.160	3 055	686.020		R5	23 967.400	3 055	675.750	
L6	24 114.640	3 055	182.820		R6	24 062.330	3 055	207.290	
L7	24 165.280	3 054	933.770		R7	24 117.970	3 054	930.120	
L8	24 286.180	3 054	332.190		R8	24 238.120	3 054	331.130	
L9	24 418.790	3 053	671.160		R9	24 374.020	3 053	653.120	
L10	24 548.930	3 053	023.430		R10	24 500.320	3 053	021.660	
L11	24 582.900	3 052	783.630		R11	24 546.420	3 052	791.800	
L12	24 629.730	3 052	644.470		R12	24 562.490	3 052	734.380	
L13	24 668.380	3 052	565.660		R13	24 575.870	3 052	692.220	
L14	24 731.730	3 052	466.910		R14	24 621.730	3 052	584.540	
L15	24 767.770	3 052	420.910		R15	24 642.300	3 052	545.600	
L16	25 042.830	3 052	117.070		R16	24 723.780	3 052	422.900	
L17	25 289.180	3 051	845.810		R17	24 781.120	3 052	356.400	
L18	25 308.420	3 051	823.530		R18	25 026.540	3 052	086.090	
L19	25 334.770	3 051	788.310		R19	25 265.050	3 051	823.580	
L20	25 350.400	3 051	763.700		R20	25 282.840	3 051	802.850	
L21	25 371.190	3 051	724.970		R21	25 309.460	3 051	767.750	
L22	25 388.480	3 051	683.000		R22	25 331.810	3 051	729.920	
L23	25 397.090	3 051	656.390		R23	25 356.470	3 051	671.500	
L24	25 407.510	3 051	613.570		R24	25 373.770	3 051	621.900	
L25	25 413.960	3 051	570.250		R25	25 382.550	3 051	567.340	
L26	25 416.150	3 051	511.880		R26	25 381.340	3 051	431.040	
L27	25 412.460	3 051	418.230		R27	25 363.750	3 050	944.670	
L28	25 414.560	3 051	361.960		R28	25 351.230	3 050	603.320	
L29	25 398.540	3 050	916.510		R29	25 326.370	3 050	002.100	
L30	25 388.080	3 050	746.700		R30	25 314.240	3 049	749.670	
L31	25 379.990	3 050	517.440		R31	25 306.040	3 049	442.690	
L32	25 359.670	3 049	946.090		R32	25 303.660	3 049	352.720	
L33	25 360.450	3 049	784.830		R33	25 304.310	3 049	252.920	
L34	25 356.380	3 049	727.110		R34	25 308.540	3 049	151.960	
L35	25 354.770	3 049	700.120		R35	25 314.860	3 049	051.030	
L36	25 345.810	3 049	446.500		R36	25 323.340	3 048	911.200	
L37	25 343.790	3 049	352.500		R37	25 446.360	3 048	296.060	
L38	25 344.710	3 049	253.280		R38	25 572.120	3 047	673.710	
L39	25 347.960	3 049	153.810		R39	25 682.750	3 047	124.620	
L40	25 354.540	3 049	054.620		R40	25 795.310	3 046	563.020	
L41	25 364.110	3 048	953.510		R41	25 915.490	3 045	959.090	
L42	25 368.600	3 048	916.810		R42	26 019.870	3 045	439.880	
L43	25 481.080	3 048	355.560		R43	26 145.170	3 044	816.290	
L44	25 585.220	3 047	791.170		R44	26 292.150	3 044	077.740	
L45	25 719.030	3 047	128.060		R45	26 413.720	3 043	471.160	
L46	25 819.730	3 046	626.940		R46	26 502.160	3 043	029.910	
L47	25 956.430	3 045	950.090		R47	26 649.230	3 042	296.190	
L48	25 977.420	3 045	845.340		R48	26 777.810	3 041	654.870	
L49	25 995.110	3 045	794.620		R49	26 863.050	3 041	229.630	
L50	26 069.580	3 045	424.250		R50	26 917.880	3 041	107.320	
L51	26 191.010	3 044	821.260		R51	27 124.480	3 040	496.540	
					<div> <div>Vel 5</div> <div>Sheet</div> </div> <div> <div>Van 6</div> <div>of</div> </div> <div>P746/09</div>				

PADRESERWE KOÖRDINATE / ROAD RESERVE CO-ORDINATES									
LINKERKANT/LEFT HAND SIDE					REGTERKANT/RIGHT HAND SIDE				
	Y		X	WG 25°		Y		X	
L52	26 315.540	3	044	201.560	R52	27 129.760	3	040	480.720
L53	26 433.730	3	043	613.320	R53	27 324.110	3	039	905.990
L54	26 461.940	3	043	466.580	R54	27 401.730	3	039	675.980
L55	26 561.950	3	042	968.670	R55	27 413.030	3	039	625.750
L56	26 695.150	3	042	310.950	R56	27 433.120	3	039	444.340
L57	26 826.000	3	041	659.620	R57	27 429.090	3	039	344.660
L58	26 889.300	3	041	344.340	R58	27 413.340	3	039	245.920
L59	26 930.410	3	041	188.070	R59	27 365.340	3	039	042.630
L60	27 161.420	3	040	505.150	R60	27 337.700	3	038	857.040
L61	27 358.980	3	039	920.220	R61	27 488.870	3	038	096.930
L62	27 419.400	3	039	722.050	R62	27 629.360	3	037	392.300
L63	27 439.280	3	039	650.650	R63	27 736.500	3	036	854.460
L64	27 456.940	3	039	602.170	R64	27 882.780	3	036	121.460
L65	27 470.460	3	039	520.760	R65	28 000.830	3	035	528.140
L66	27 474.710	3	039	399.860	R66	28 138.960	3	034	833.960
L67	27 458.070	3	039	259.540	R67	28 262.350	3	034	214.110
L68	27 406.130	3	039	053.550	R68	28 413.760	3	033	451.340
L69	27 393.510	3	038	884.310	R69	28 538.260	3	032	822.010
L70	27 434.860	3	038	600.760	R70	28 641.950	3	032	267.240
L71	27 542.310	3	038	061.380	R71	28 661.430	3	032	128.500
L72	27 673.540	3	037	402.060	R72	28 688.470	3	032	015.130
L73	27 791.600	3	036	809.400	R73	28 708.940	3	031	776.200
L74	27 923.750	3	036	129.690	R74	28 710.580	3	031	692.100
L75	28 048.090	3	035	539.370	R75	28 706.880	3	031	560.680
L76	28 196.520	3	034	786.210	R76	28 675.830	3	031	019.860
L77	28 303.130	3	034	197.200					
L78	28 449.810	3	033	434.710					
L79	28 567.900	3	032	838.990					
L80	28 690.960	3	032	217.270					
L81	28 698.450	3	032	175.400					
L82	28 709.470	3	032	106.080					
L83	28 719.580	3	032	032.730					
L84	28 727.850	3	031	960.800					
L85	28 737.150	3	031	846.320					
L86	28 740.520	3	031	759.000					
L87	28 743.440	3	031	644.960					
L88	28 741.210	3	031	537.240					
L89	28 735.660	3	031	436.070					
L90	28 726.330	3	031	318.130					
L91	28 702.330	3	031	017.280					