
GOVERNMENT NOTICE

DEPARTMENT OF TRANSPORT

No. 912

19 October 2010

THE SOUTH AFRICAN NATIONAL ROADS AGENCY LIMITED

Registration No: 98/09584/06

DECLARATION AMENDMENT OF NATIONAL ROAD N8 SECTION 7

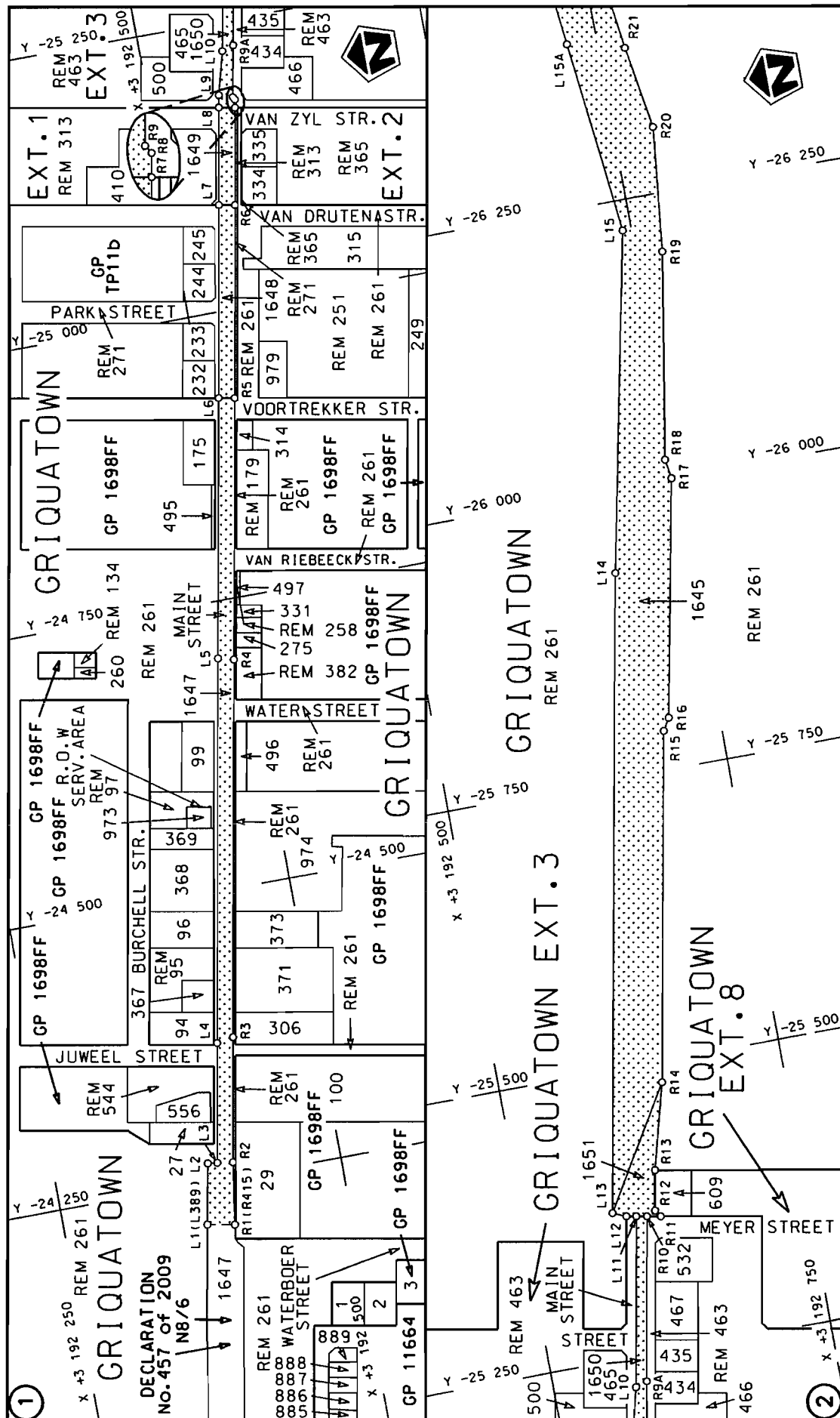
AMENDMENT OF DECLARATION No. 284 OF 2006

By virtue of section 40(1)(b) of the South African National Roads Agency Limited and the National Roads Act, 1998 (Act No. 7 of 1998), I hereby amend declaration No. 284 of 2006, by substituting the section of the descriptive declaration from Griquatown up to Campbell, with the subjoined sheets 1 to 11 of Plan No. P772/09. Including only the roadway and shoulders (surfaced or gravel) but excluding kerbs, channels, sidewalks and parking areas through the township of Griekwastad.

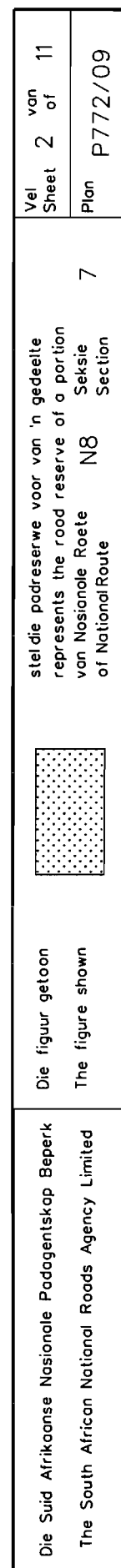
(National Road N8 Section 7: Griquatown – Campbell)



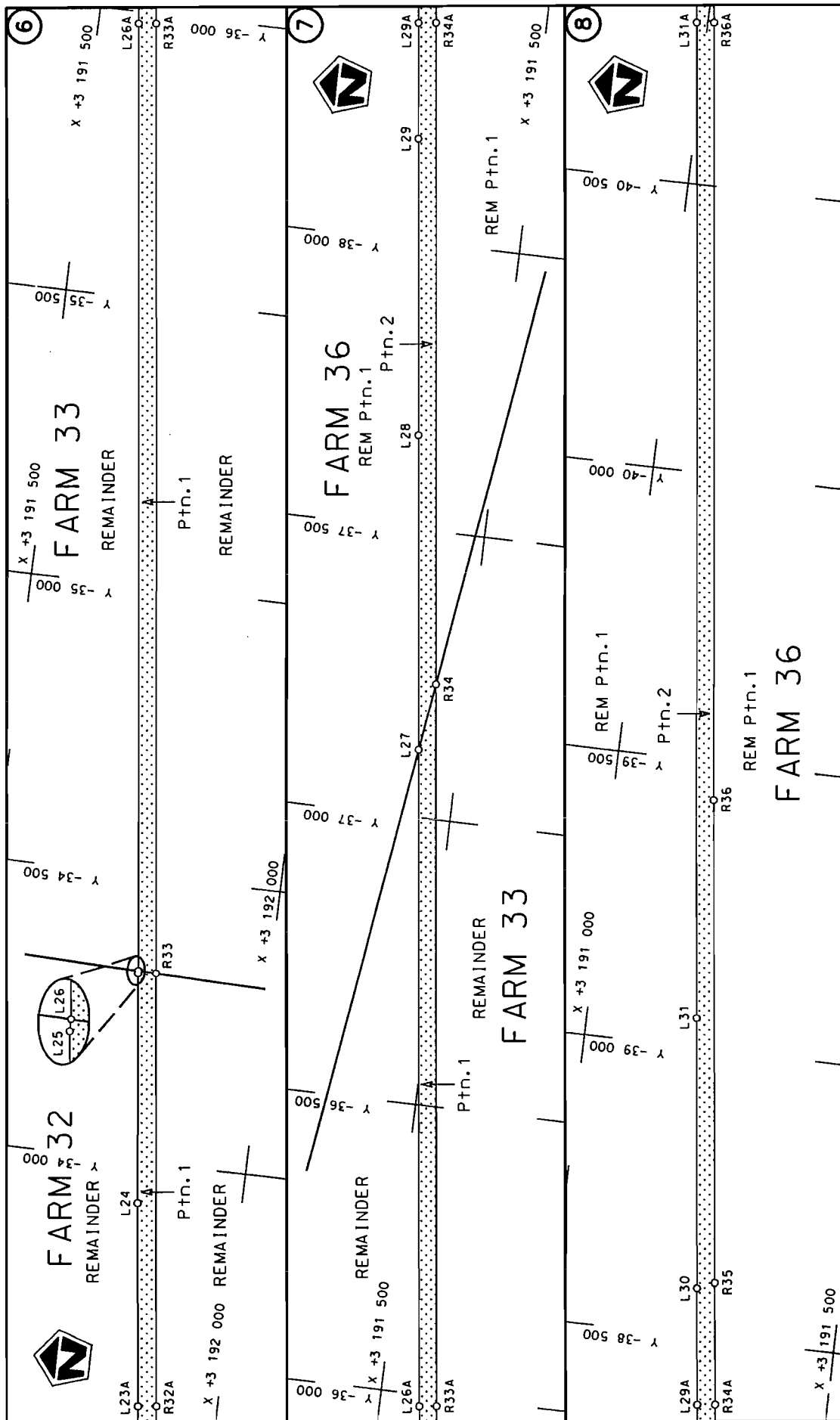
MINISTER OF TRANSPORT



Die Suid Afrikaanse Nasionale Padagentskap Beperk The South African National Roads Agency Limited	Die figuur getoon The figure shown	<div data-bbox="1340 1142 1428 1299" data-label="Image"> </div> <p>steldie padreserwe voor van 'n gedeelte represents the road reserve of a portion van Nasionale Roete N8 of National Route</p>
Vel Sheet 1 of 11	Plan P772/09	7 Seksie Section



stel die podreserwe voor van 'n gedeelte
represents the rood reserve of a portion
van Nasionale Roete N8 Seksie
of National Route Section

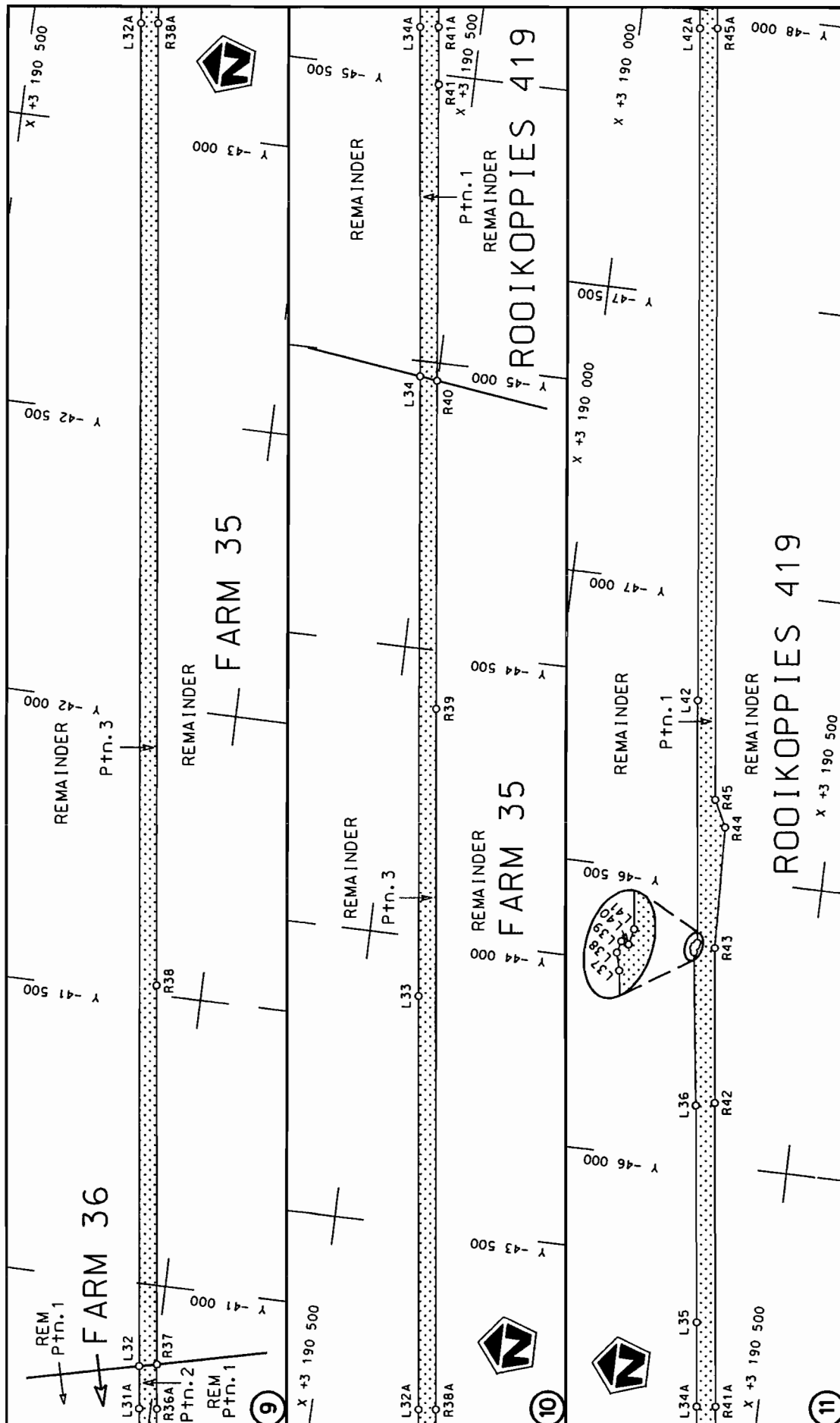


steldie padreserwe voor van 'n gedeelte
represents the road reserve of a portion
van Nasionale Roete N8 Seksie
of National Route Section

Die figuur getoon

Die Suid Afrikaanse Nasionale Padagentskap Beperk
The South African National Roads Agency Limited

Vel Sheet 3 of 11
Plan P772/09



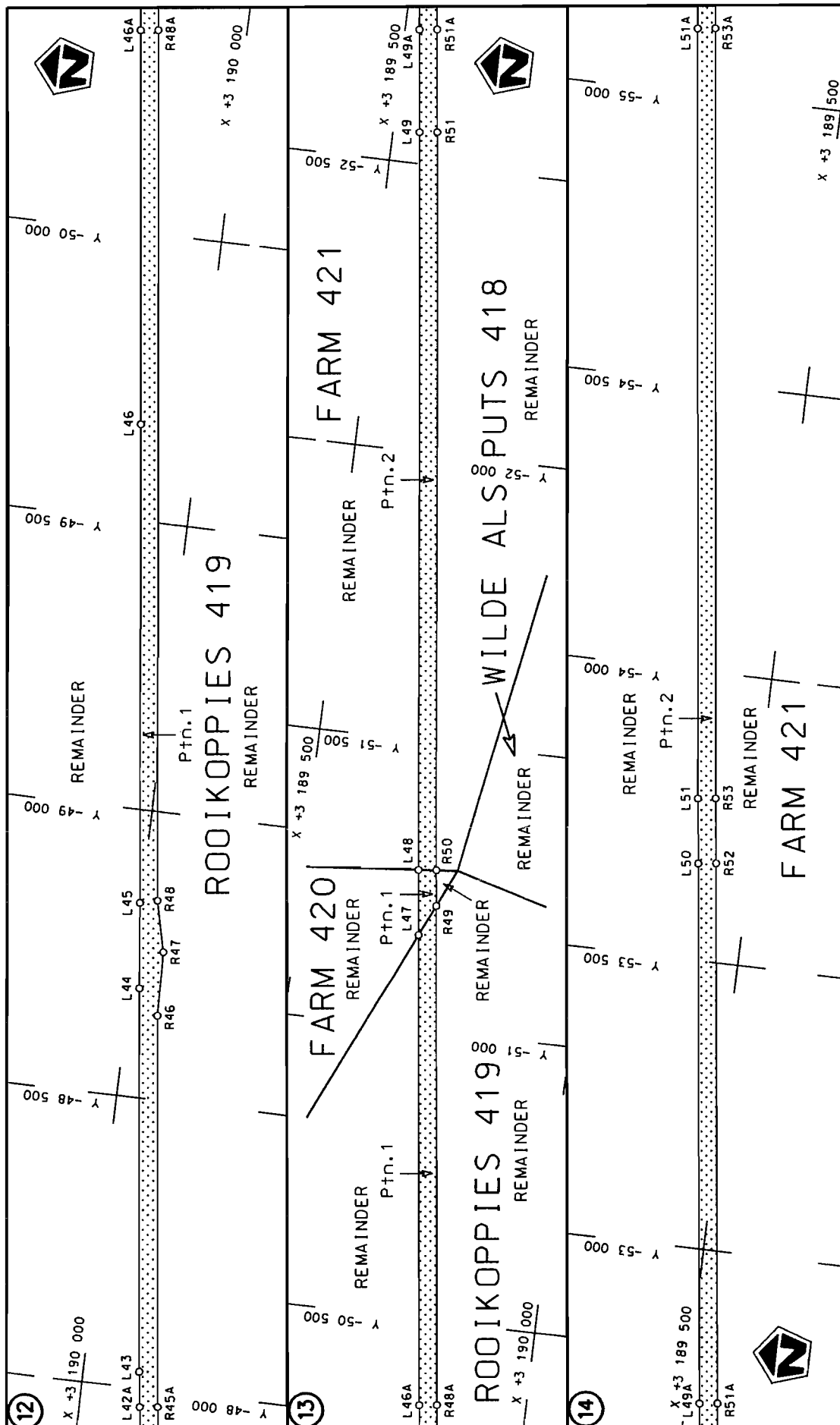
Die Suid Afrikaanse Nasionale Podogentskap Beperk
The South African National Roads Agency Limited

Die figuur getoon
The figure shown



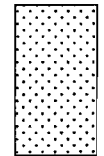
stelt die podreserwe voor van 'n gedeelte
represents the road reserve of a portion
van Nasionale Roete N8
of National Route

Vel
Sheet 4 of 11
Plan P772/09



Die Suid Afrikaanse Nasionale Padagentskap Beperk
The South African National Roads Agency Limited

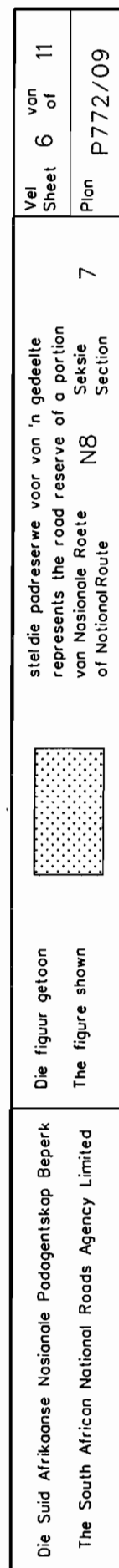
Die figuur getoon
The figure shown



stelsel podreserwe voor van 'n gedeelte
represents the road reserve of a portion
van Nasionale Roete N8
of National Route

Vel
Sheet 5 of 11

Plan P772/09

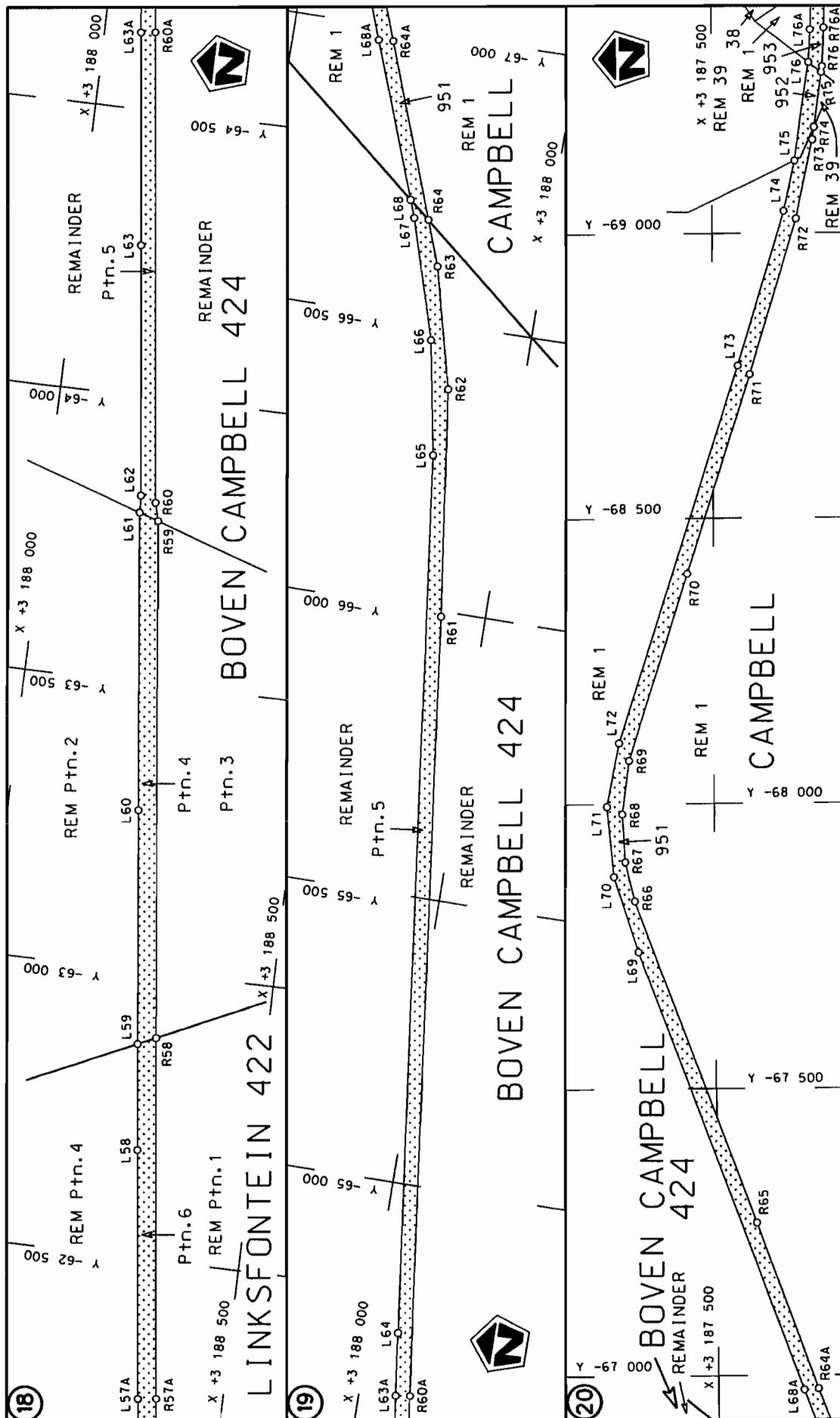


steldie podreserwe voor van 'n gedeelte
represents the rood reserve of a portion
van Nasionale Roete N8 Seksie
of Notional Route Section

Die figuur getoon

Die Suid Afrikaanse Nasionale Padagentskap Beperk
The South African National Roads Agency Limited

Vel Sheet 6 of 11
Plan P772/09

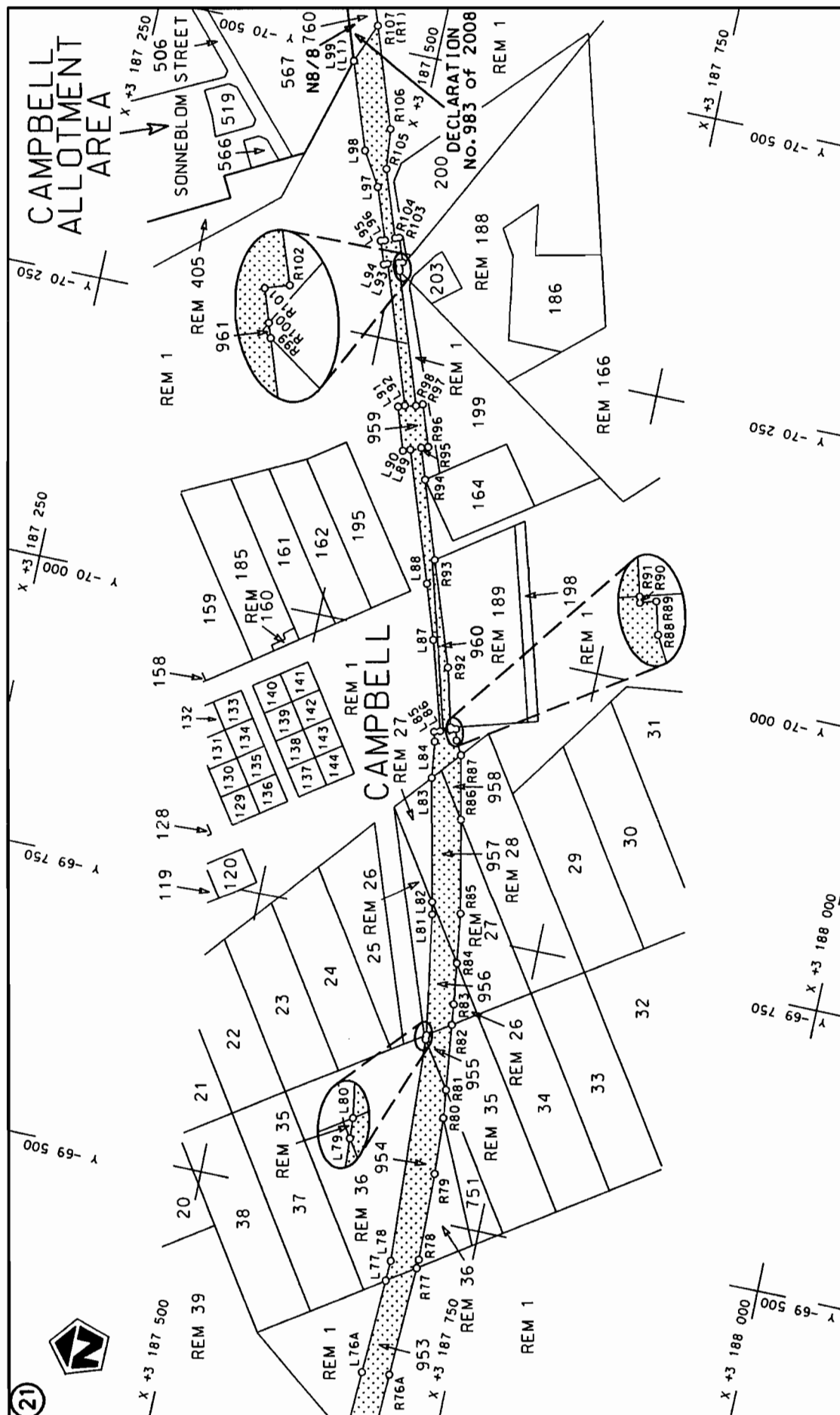


steldie padreserwe voor van 'n gedeelte
represents the road reserve of a portion
van Nasionale Roete N8
of National Route Section

Die figuur getoon

Die Suid Afrikaanse Nasionale Podogentskap Beperk
The South African National Roads Agency Limited

Vel Sheet	7 of	11
Plan	P722/09	



PADRESERWE KOÖRDINATE				/	ROAD RESERVE CO-ORDINATES			
LINKERKANT/LEFT HAND SIDE					REGTERKANT/RIGHT HAND SIDE			
	Y	X	WG	23°		Y	X	
L1	-24 214.140	3 192 373.990			R1	-24 209.667	3 192 397.731	
L2	-24 266.260	3 192 383.820			R2	-24 263.310	3 192 405.840	
L3	-24 265.260	3 192 392.190			R3	-24 371.700	3 192 425.910	
L4	-24 369.170	3 192 411.200			R4	-24 696.710	3 192 485.770	
L5	-24 700.340	3 192 472.190			R5	-24 922.640	3 192 527.360	
L6	-24 925.180	3 192 513.550			R6	-25 089.830	3 192 558.140	
L7	-25 092.370	3 192 544.310			R7	-25 173.430	3 192 573.530	
L8	-25 175.980	3 192 559.690			R8	-25 180.280	3 192 574.790	
L9	-25 186.640	3 192 561.650			R9	-25 182.700	3 192 573.270	
L10	-25 224.050	3 192 571.440			R10	-25 368.780	3 192 607.920	
L11	-25 370.470	3 192 598.740			R11	-25 366.570	3 192 619.860	
L12	-25 372.040	3 192 590.180			R12	-25 372.420	3 192 615.840	
L13	-25 376.890	3 192 578.610			R13	-25 406.840	3 192 622.170	
L14	-25 928.190	3 192 682.320			R14	-25 481.720	3 192 642.270	
L15	-26 223.330	3 192 742.380			R15	-25 784.360	3 192 699.150	
L16	-27 389.180	3 192 614.260			R16	-25 794.780	3 192 705.460	
L17	-27 389.650	3 192 618.700			R17	-26 001.240	3 192 745.330	
L18	-27 870.440	3 192 560.640			R18	-26 018.120	3 192 742.600	
L19	-30 451.670	3 192 243.620			R19	-26 198.660	3 192 772.970	
L20	-30 944.930	3 192 183.470			R20	-26 307.370	3 192 784.540	
L21	-31 948.260	3 192 061.630			R21	-26 380.140	3 192 773.050	
L22	-32 455.710	3 191 999.420			R22	-26 811.720	3 192 719.560	
L23	-32 942.160	3 191 940.160			R23	-27 392.960	3 192 649.550	
L24	-33 928.120	3 191 819.200			R24	-27 883.690	3 192 589.850	
L25	-34 329.720	3 191 770.360			R25	-28 709.050	3 192 488.750	
L26	-34 334.510	3 191 770.340			R26	-29 344.480	3 192 412.210	
L27	-37 117.950	3 191 430.100			R27	-29 996.310	3 192 331.190	
L28	-37 664.630	3 191 362.020			R28	-30 181.640	3 192 308.590	
L29	-38 179.540	3 191 299.100			R29	-30 670.800	3 192 250.050	
L30	-38 584.090	3 191 250.120			R30	-31 165.370	3 192 188.090	
L31	-39 052.030	3 191 193.030			R31	-31 651.240	3 192 128.850	
L32	-40 856.520	3 190 971.780			R32	-32 113.820	3 192 072.990	
L33	-43 896.520	3 190 599.040			R33	-34 333.670	3 191 801.180	
L34	-44 972.760	3 190 467.910			R34	-37 234.560	3 191 446.490	
L35	-45 724.530	3 190 375.670			R35	-38 597.110	3 191 279.850	
L36	-46 097.140	3 190 328.680			R36	-39 433.940	3 191 176.860	
L37	-46 363.530	3 190 292.850			R37	-40 863.400	3 191 001.580	
L38	-46 370.390	3 190 291.070			R38	-41 516.970	3 190 921.230	
L39	-46 374.950	3 190 292.280			R39	-44 398.740	3 190 568.140	
L40	-46 374.030	3 190 295.300			R40	-44 968.800	3 190 498.570	
L41	-46 380.280	3 190 296.710			R41	-45 482.590	3 190 438.370	
L42	-46 800.880	3 190 245.330			R42	-46 105.120	3 190 360.700	
L43	-48 028.480	3 190 097.010			R43	-46 374.830	3 190 327.840	
L44	-48 691.440	3 190 016.200			R44	-46 587.920	3 190 320.120	
L45	-48 840.050	3 189 998.810			R45	-46 632.880	3 190 297.190	
L46	-49 667.550	3 189 897.680			R46	-48 647.240	3 190 052.470	
L47	-51 165.220	3 189 715.670			R47	-48 759.670	3 190 049.240	
L48	-51 277.680	3 189 702.010			R48	-48 847.480	3 190 028.030	
L49	-52 554.880	3 189 546.800			R49	-51 218.920	3 189 740.340	
L50	-53 667.550	3 189 410.270			R50	-51 280.390	3 189 732.880	
L51	-53 778.510	3 189 396.290			R51	-52 558.540	3 189 577.820	
					Vel	9	Van	11
					Sheet		of	
					P772/09			

PADRESERWE KOÖRDINATE				/	ROAD RESERVE CO-ORDINATES			
LINKERKANT/LEFT HAND SIDE					REGTERKANT/RIGHT HAND SIDE			
	Y	X	WG	23°		Y	X	
L52	-56 273.750	3 189 089.310			R52	-53 671.310	3 189 441.060	
L53	-57 604.270	3 188 925.140			R53	-53 782.250	3 189 427.020	
L54	-58 564.720	3 188 806.630			R54	-56 279.980	3 189 119.800	
L55	-60 074.750	3 188 620.990			R55	-57 608.240	3 188 955.980	
L56	-61 255.550	3 188 475.820			R56	-59 575.380	3 188 713.360	
L57	-61 938.120	3 188 392.350			R57	-60 098.050	3 188 649.750	
L58	-62 687.280	3 188 299.770			R58	-62 885.970	3 188 307.850	
L59	-62 871.760	3 188 277.400			R59	-63 785.790	3 188 198.540	
L60	-63 278.810	3 188 228.050			R60	-63 816.910	3 188 189.850	
L61	-63 796.900	3 188 164.530			R61	-65 990.560	3 187 922.540	
L62	-63 826.610	3 188 163.150			R62	-66 387.330	3 187 869.820	
L63	-64 263.180	3 188 109.440			R63	-66 597.800	3 187 816.260	
L64	-64 742.880	3 188 050.810			R64	-66 675.810	3 187 787.370	
L65	-66 268.190	3 187 862.750			R65	-67 265.510	3 187 569.020	
L66	-66 468.120	3 187 826.050			R66	-67 830.220	3 187 358.470	
L67	-66 675.440	3 187 762.240			R67	-67 899.140	3 187 341.870	
L68	-66 705.780	3 187 750.920			R68	-67 982.030	3 187 337.040	
L69	-67 740.890	3 187 364.630			R69	-68 075.440	3 187 349.620	
L70	-67 873.380	3 187 321.630			R70	-68 402.900	3 187 453.290	
L71	-67 995.400	3 187 310.300			R71	-68 752.320	3 187 565.050	
L72	-68 106.150	3 187 332.000			R72	-69 025.150	3 187 648.670	
L73	-68 767.390	3 187 543.700			R73	-69 163.100	3 187 678.750	
L74	-69 038.810	3 187 626.880			R74	-69 184.950	3 187 681.700	
L75	-69 126.430	3 187 646.800			R75	-69 282.150	3 187 694.810	
L76	-69 299.900	3 187 671.970			R76	-69 292.390	3 187 696.200	
L77	-69 441.200	3 187 678.960			R77	-69 457.510	3 187 703.390	
L78	-69 458.900	3 187 679.740			R78	-69 465.060	3 187 703.720	
L79	-69 653.790	3 187 670.240			R79	-69 540.920	3 187 701.920	
L80	-69 657.750	3 187 670.040			R80	-69 589.840	3 187 699.480	
L81	-69 762.890	3 187 653.060			R81	-69 614.170	3 187 696.700	
L82	-69 773.720	3 187 650.710			R82	-69 671.090	3 187 690.010	
L83	-69 880.610	3 187 627.510			R83	-69 689.110	3 187 687.890	
L84	-69 912.390	3 187 623.380			R84	-69 725.240	3 187 683.090	
L85	-69 920.740	3 187 621.010			R85	-69 768.810	3 187 677.300	
L86	-69 922.380	3 187 626.150			R86	-69 850.160	3 187 660.210	
L87	-69 999.050	3 187 603.300			R87	-69 905.570	3 187 648.510	
L88	-70 046.770	3 187 587.430			R88	-69 917.300	3 187 642.000	
L89	-70 159.040	3 187 548.490			R89	-69 926.930	3 187 639.450	
L90	-70 156.640	3 187 542.340			R90	-69 925.510	3 187 634.830	
L91	-70 193.840	3 187 530.020			R91	-69 927.370	3 187 634.340	
L92	-70 195.980	3 187 535.720			R92	-69 978.200	3 187 620.940	
L93	-70 315.190	3 187 494.670			R93	-70 068.580	3 187 589.820	
L94	-70 313.720	3 187 491.420			R94	-70 136.090	3 187 566.620	
L95	-70 333.850	3 187 484.460			R95	-70 162.620	3 187 557.440	
L96	-70 335.020	3 187 488.070			R96	-70 164.510	3 187 563.420	
L97	-70 379.690	3 187 472.110			R97	-70 200.360	3 187 550.790	
L98	-70 408.520	3 187 454.360			R98	-70 197.750	3 187 545.210	
L99	-70 483.490	3 187 428.220			R99	-70 311.000	3 187 506.400	
					R100	-70 313.130	3 187 505.670	
					R101	-70 317.980	3 187 504.010	
					R102	-70 319.160	3 187 507.520	
					<div> <div>Ve1</div> <div>10</div> <div>Van</div> <div>11</div> <div>Sheet</div> <div>of</div> </div> <div>P772/09</div>			

PADRESERWE KOÖRDINATE				/	ROAD RESERVE CO-ORDINATES			
LINKERKANT/LEFT HAND SIDE					REGTERKANT/RIGHT HAND SIDE			
Y	X	WG	23°		Y	X		
				R103	-70 340.100	3 187 500.080		
				R104	-70 338.810	3 187 496.330		
				R105	-70 396.590	3 187 476.340		
				R106	-70 431.650	3 187 472.660		
				R107	-70 518.070	3 187 442.780		