
GOVERNMENT NOTICE

DEPARTMENT OF TRANSPORT

No. 911

19 October 2010

THE SOUTH AFRICAN NATIONAL ROADS AGENCY LIMITED

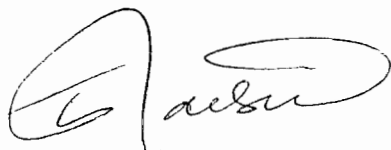
Registration No: 98/09584/06

DECLARATION AMENDMENT OF NATIONAL ROAD N7 SECTION 1

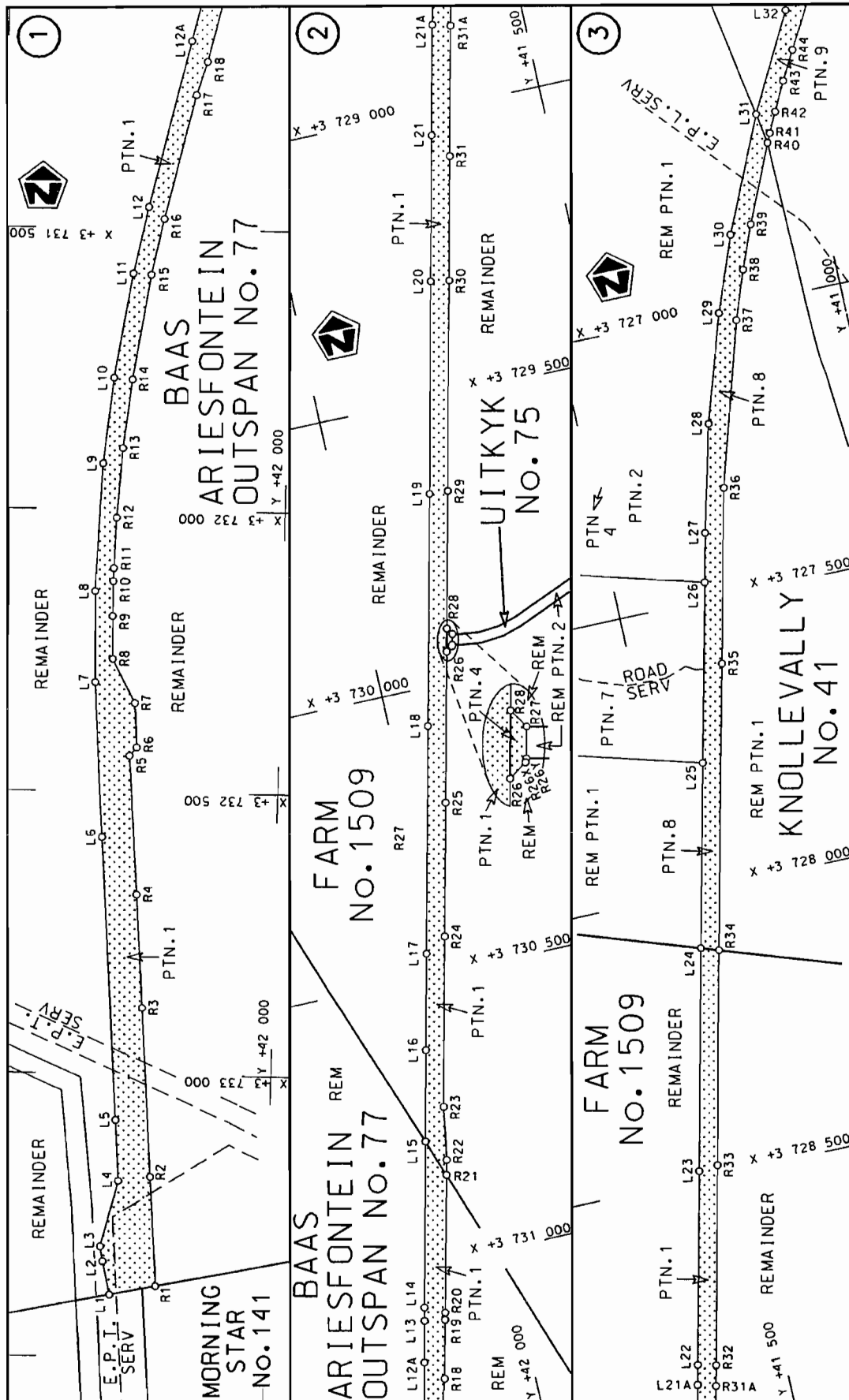
AMENDMENT OF DECLARATION NO. 218 OF 2006.

By virtue of section 40 (1)(b) of the South African National Roads Agency Limited and the National Roads Act, 1998 (Act No. 7 of 1998), I hereby amend Declaration No. 218 of 2006, by substituting the section of the descriptive declaration from the Melkbos junction up to Malmesbury, with the subjoined sheets 1 to 11 of Plan No. P760/09.

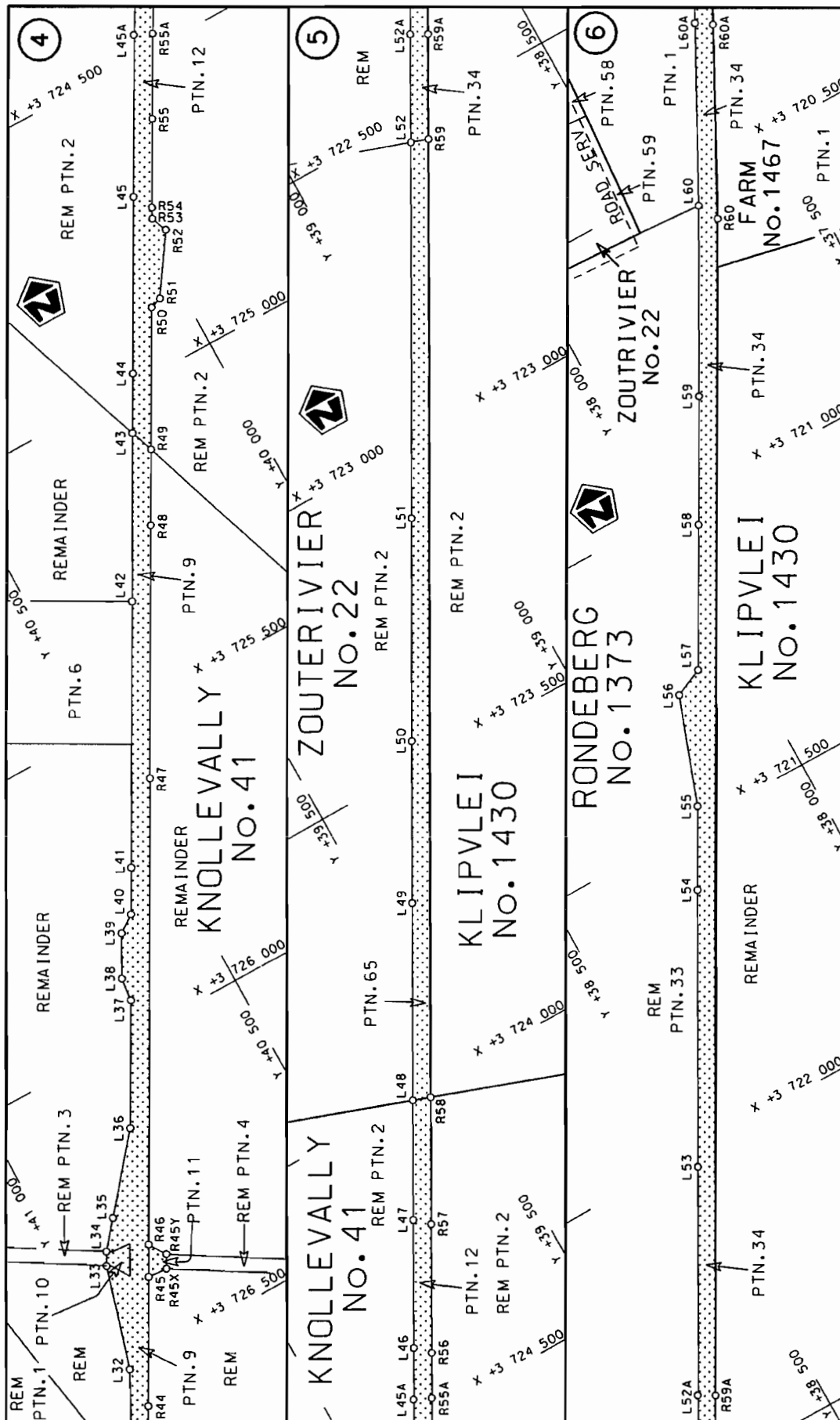
[National Road N7 Section 1: MR199 (Melkbostrand) – Malmesbury]




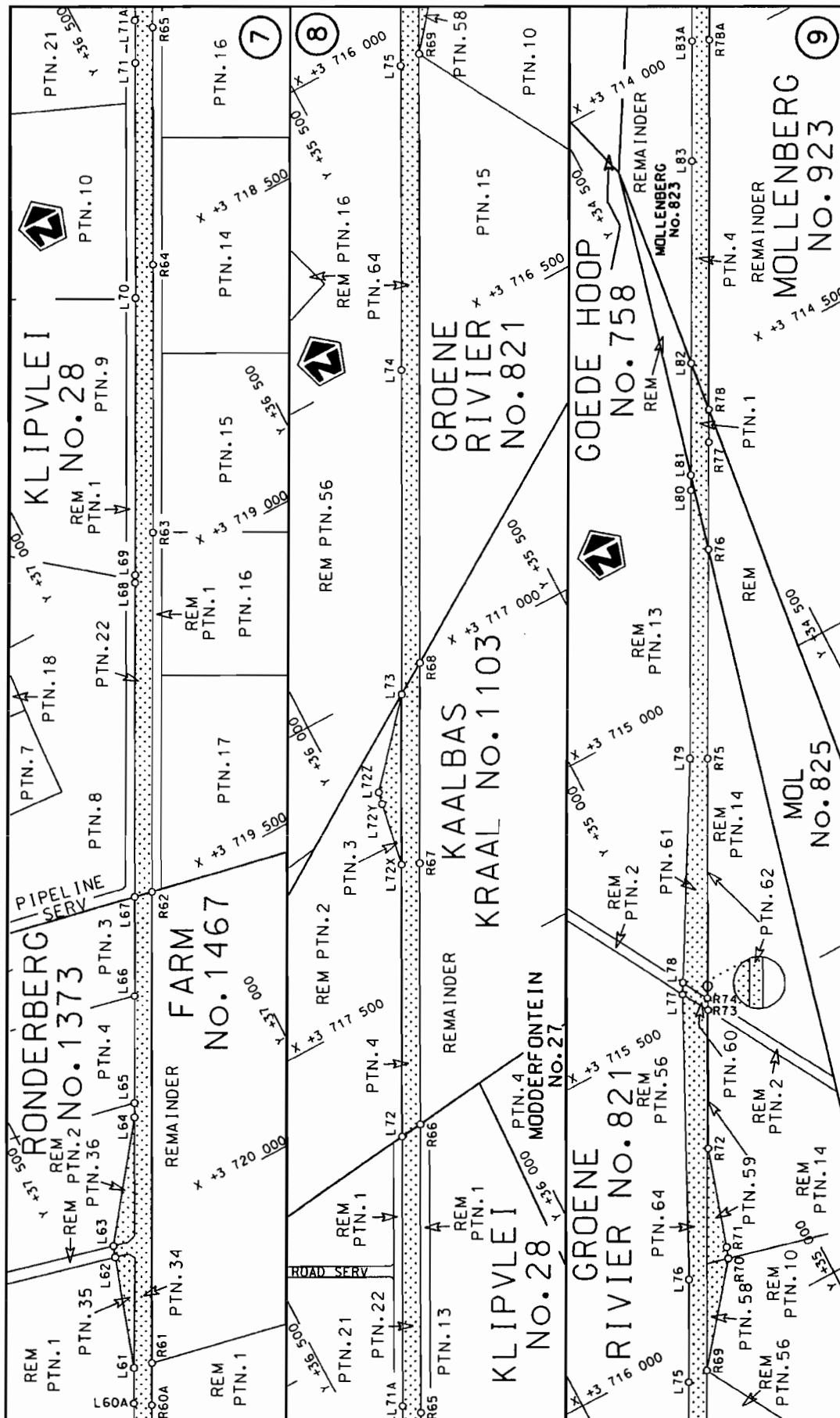
MINISTER OF TRANSPORT




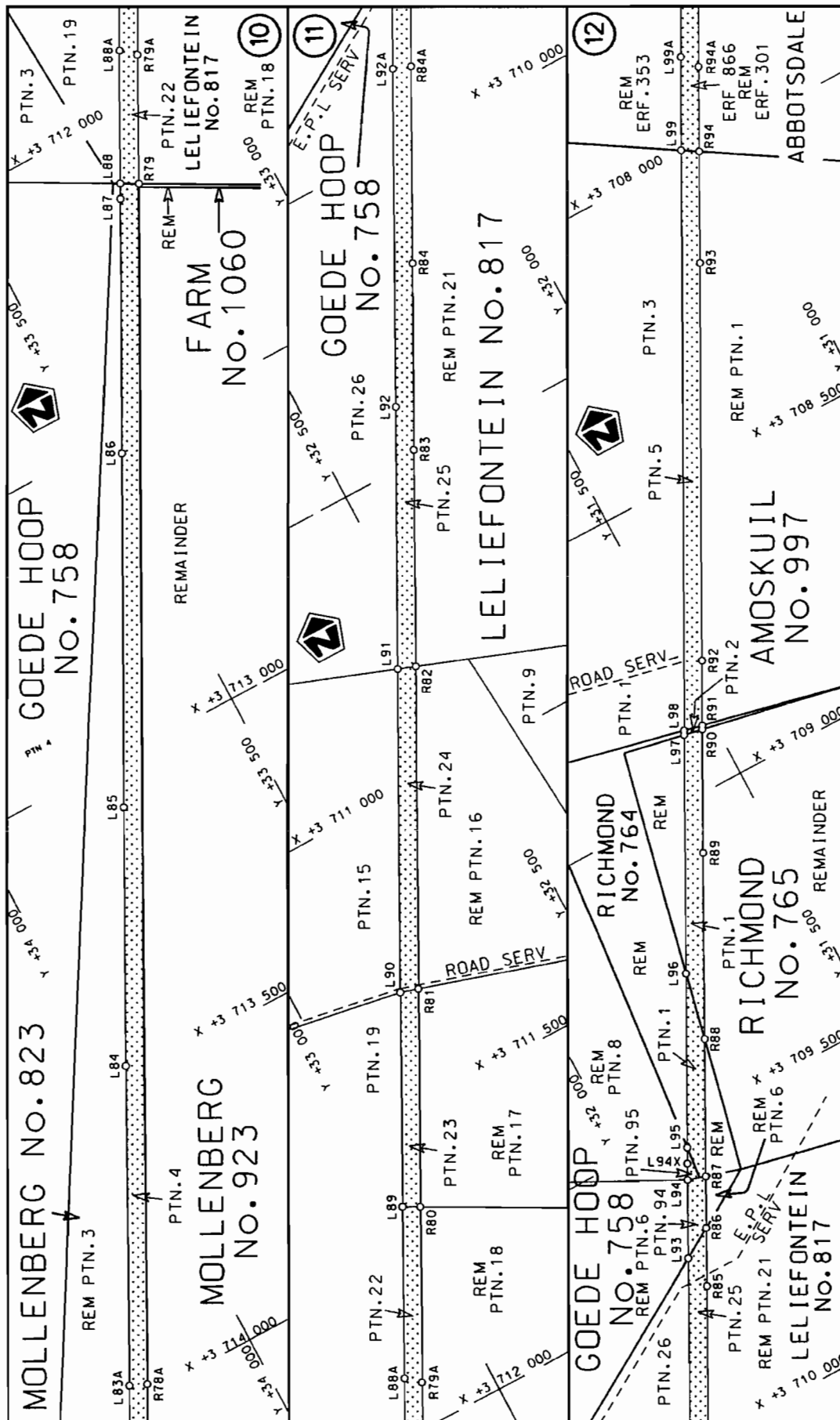
Die Suid Afrikaanse Nasionale Padagentskap Beperk The South African National Roads Agency Limited	Die figuur getoon The figure shown	<div data-bbox="1337 1115 1422 1272" data-label="Image"> </div> <p>stel die padreserwe voor van 'n gedeelte represents the road reserve of a portion van Nasionale Roete N7 of National Route</p>	Vel Sheet 1 of 11 Plan P760/09
--	---------------------------------------	---	---



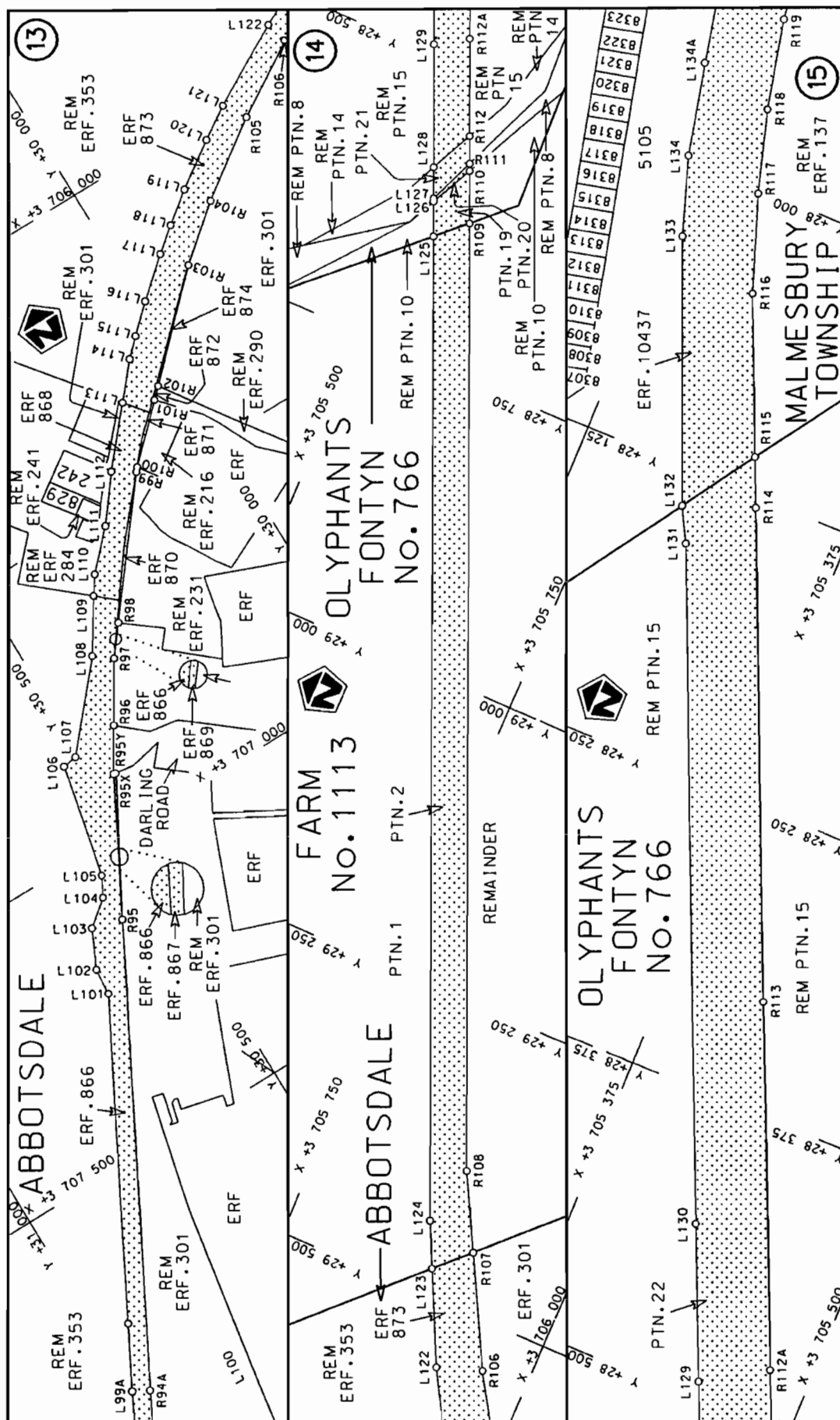
Die Suid Afrikaanse Nasionale Podagieskap Beperk The South African National Roads Agency Limited	Die figuur getoon The figure shown		steldie podreserwe voor van 'n gedeelte represents the road reserve of a portion van Nasionale Roete N7 of National Route	1	Plan P760/09	Vel 2 of 11 Sheet 2 of 11
---	---------------------------------------	---	--	---	--------------	------------------------------



Die Suid Afrikaanse Nasionale Podogentskap Beperk	Die figuur getoon		steldie podreserwe voor van 'n gedeelte represents the road reserve of a portion van Nasionale Roete N7 of National Route	Vel Sheet 3 of 11
The South African National Roads Agency Limited	The figure shown		1	Plan P760/09



Die Suid Afrikaanse Nasionale Padagentskap Beperk The South African National Roads Agency Limited	Die figuur getoon The figure shown	steldie podreserwe voor van 'n gedeelte represents the road reserve of a portion van Nasionale Roete N7 Seksie 1 of National Route	Vel Sheet 4 of 11 Plan P760/09
--	---------------------------------------	---	--------------------------------------



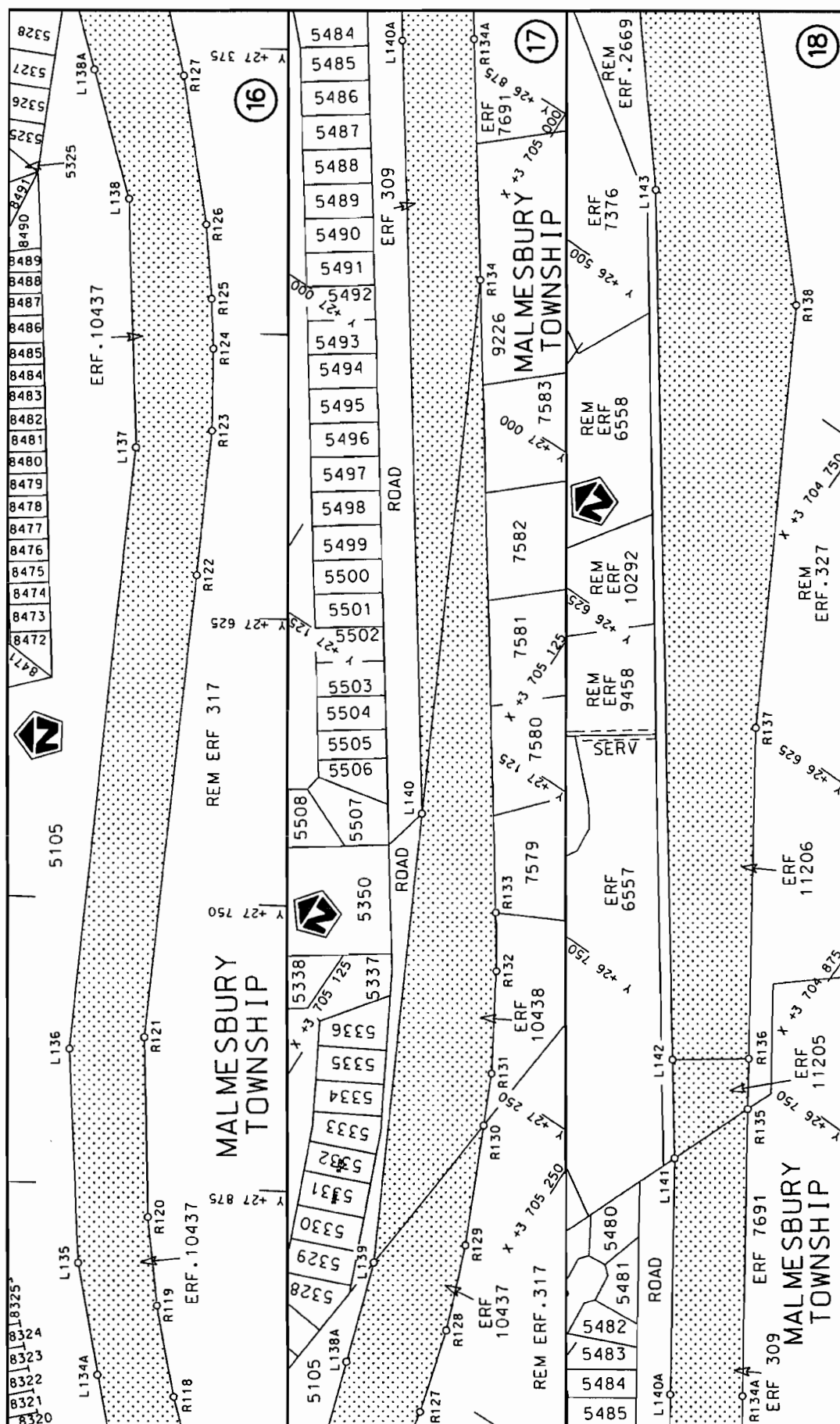
Die Suid Afrikaanse Nasionale Padagentskap Beperk
The South African National Roads Agency Limited


Die figuur getoon

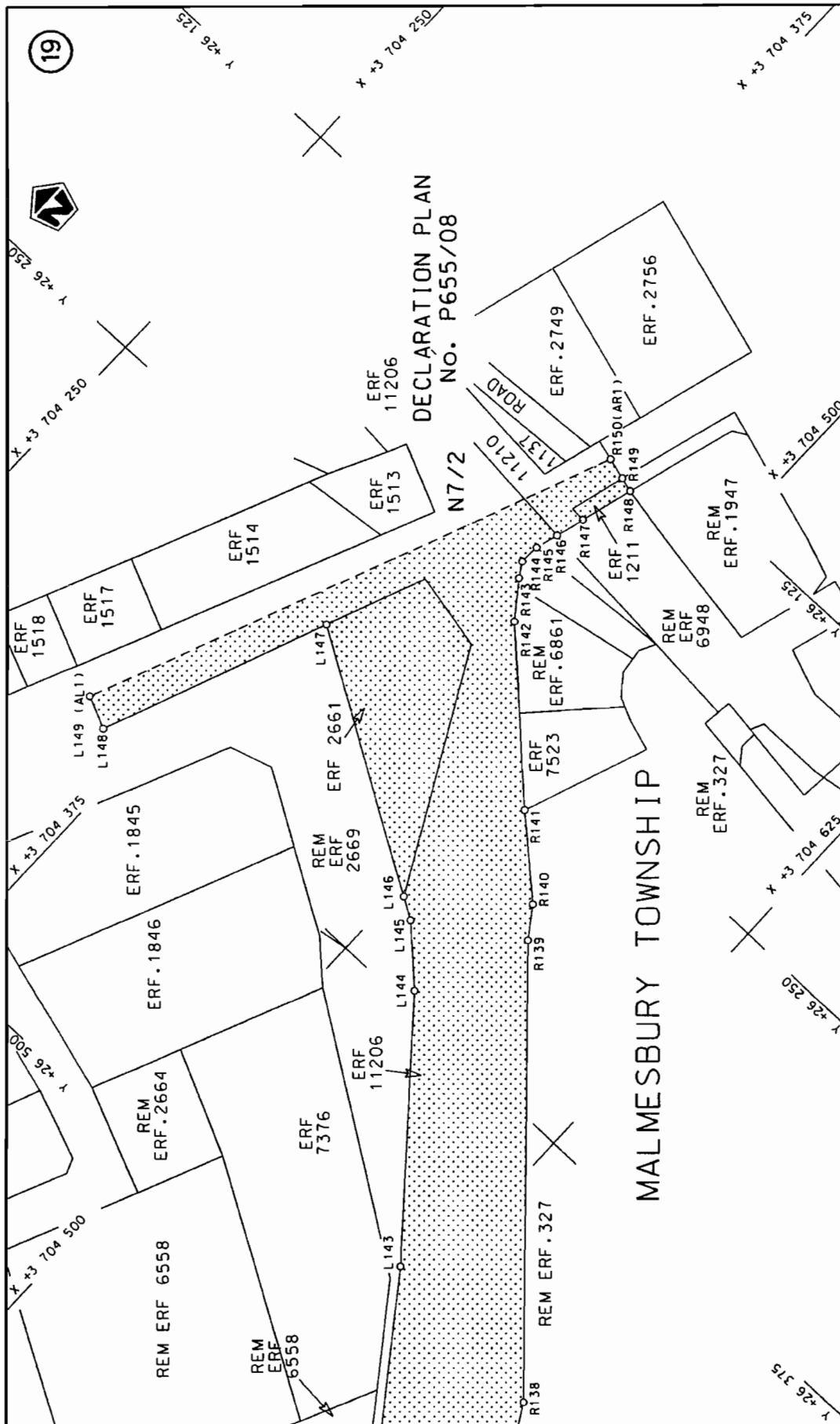



steldie padreserwe voor van 'n gedeelte
represents the road reserve of a portion
von Nasionale Roete N7 Seksie
of National Route Section

Vel Sheet 5 of 11
Plan P760/09



Die Suid Afrikaanse Nasionale Padagentskap Beperk	Die figuur getoon		steldie padreserwe voor van 'n gedeelte represents the road reserve of a portion van Nasionale Roete N7 of National Route	Vel Sheet	6 of	11
The South African National Roads Agency Limited	The figure shown			1	Plan	P760/09



Die Suid Afrikaanse Nasionale Padagentskop Beperk	Die figuur getoon		steldie padreserwe voor van 'n gedeelte represents the raad reserve of a portion van Nasionale Roete N7 of National Route	Vel Sheet 7 of 11
The South African National Roads Agency Limited	The figure shown			Plan P760/09

PADRESERWE KOÖRDINATE / ROAD RESERVE CO-ORDINATES									
LINKERKANT/LEFT HAND SIDE					REGTERKANT/RIGHT HAND SIDE				
	Y		X	WG 19°		Y		X	
L1	42 269.470	3	733 389.870		R1	42 190.880	3	733 373.580	
L2	42 282.470	3	733 331.880		R2	42 204.880	3	733 182.000	
L3	42 287.360	3	733 306.180		R3	42 226.670	3	732 881.250	
L4	42 259.020	3	733 190.310		R4	42 241.310	3	732 681.020	
L5	42 266.720	3	733 082.290		R5	42 259.130	3	732 435.610	
L6	42 302.740	3	732 580.180		R6	42 247.130	3	732 420.750	
L7	42 321.840	3	732 306.400		R7	42 252.650	3	732 342.320	
L8	42 326.230	3	732 145.680		R8	42 292.470	3	732 264.810	
L9	42 318.360	3	731 917.790		R9	42 294.660	3	732 189.360	
L10	42 303.380	3	731 764.720		R10	42 295.190	3	732 127.430	
L11	42 274.840	3	731 579.610		R11	42 294.920	3	732 104.030	
L12	42 250.350	3	731 460.860		R12	42 292.230	3	732 013.950	
L13	42 166.610	3	731 092.890		R13	42 284.880	3	731 890.010	
L14	42 161.510	3	731 070.180		R14	42 271.920	3	731 767.130	
L15	42 096.850	3	730 785.750		R15	42 243.080	3	731 581.450	
L16	42 060.950	3	730 626.700		R16	42 223.060	3	731 481.800	
L17	42 022.970	3	730 459.370		R17	42 172.390	3	731 260.230	
L18	41 933.630	3	730 067.400		R18	42 154.470	3	731 200.800	
L19	41 842.140	3	729 665.710		R19	42 131.130	3	731 099.020	
L20	41 759.080	3	729 297.620		R20	42 128.290	3	731 087.140	
L21	41 701.270	3	729 044.690		R21	42 073.710	3	730 851.740	
L22	41 649.570	3	728 817.920		R22	42 067.640	3	730 825.540	
L23	41 574.340	3	728 485.780		R23	42 052.570	3	730 732.700	
L24	41 486.270	3	728 098.840		R24	41 985.140	3	730 436.690	
L25	41 413.620	3	727 780.010		R25	41 932.480	3	730 206.800	
L26	41 342.920	3	727 467.990		R26	41 873.320	3	729 945.670	
L27	41 323.590	3	727 382.240		R26X	41 862.480	3	729 938.170	
L28	41 276.870	3	727 193.160		R26Y	41 861.460	3	729 935.980	
L29	41 217.550	3	727 005.020		R27	41 872.900	3	729 943.120	
L30	41 168.140	3	726 873.510		R28	41 864.480	3	729 906.360	
L31	41 079.070	3	726 674.010		R29	41 810.210	3	729 667.220	
L32	40 989.480	3	726 503.840		R30	41 727.470	3	729 303.020	
L33	40 936.940	3	726 326.510		R31	41 678.410	3	729 086.930	
L34	40 924.810	3	726 304.400		R32	41 618.970	3	728 825.460	
L35	40 886.830	3	726 258.730		R33	41 541.000	3	728 482.340	
L36	40 786.290	3	726 137.820		R34	41 456.000	3	728 109.190	
L37	40 677.460	3	725 942.150		R35	41 343.970	3	727 615.000	
L38	40 672.630	3	725 901.220		R36	41 274.750	3	727 310.470	
L39	40 634.310	3	725 831.410		R37	41 190.390	3	727 023.800	
L40	40 603.500	3	725 809.040		R38	41 159.830	3	726 939.420	
L41	40 563.670	3	725 737.620		R39	41 129.590	3	726 863.170	
L42	40 337.720	3	725 331.220		R40	41 069.990	3	726 727.730	
L43	40 195.020	3	725 073.450		R41	41 062.570	3	726 712.080	
L44	40 143.700	3	724 981.550		R42	41 045.460	3	726 676.700	
L45	39 993.440	3	724 710.780		R43	41 019.780	3	726 625.820	
L46	39 811.620	3	724 383.710		R44	40 993.080	3	726 575.850	
L47	39 703.200	3	724 188.370		R45	40 883.080	3	726 377.750	
L48	39 603.130	3	724 008.470		R45X	40 848.510	3	726 380.350	
L49	39 433.940	3	723 704.310		R45Y	40 836.310	3	726 358.140	
L50	39 296.530	3	723 457.510		R46	40 855.560	3	726 328.110	
L51	39 106.590	3	723 116.310		R47	40 460.850	3	725 617.260	
					Vel	8	Van	11	P760/09
					Sheet		of		

PADRESERWE KOÖRDINATE / ROAD RESERVE CO-ORDINATES										
LINKERKANT/LEFT HAND SIDE					REGTERKANT/RIGHT HAND SIDE					
	Y		X	WG 19°		Y		X		
L52	38 785.890	3	722	540.650	R48	40 245.570	3	725	229.960	
L53	38 500.750	3	722	027.460	R49	40 181.030	3	725	113.800	
L54	38 264.820	3	721	602.690	R50	40 059.680	3	724	895.310	
L55	38 194.390	3	721	475.530	R51	40 039.170	3	724	888.720	
L56	38 128.730	3	721	289.600	R52	39 971.600	3	724	788.050	
L57	38 078.460	3	721	266.820	R53	39 983.670	3	724	759.590	
L58	37 954.690	3	721	044.700	R54	39 974.690	3	724	742.180	
L59	37 845.090	3	720	847.380	R55	39 899.210	3	724	606.640	
L60	37 683.470	3	720	554.350	R56	39 788.040	3	724	406.690	
L61	37 504.510	3	720	215.840	R57	39 679.050	3	724	210.550	
L62	37 443.500	3	720	031.080	R58	39 572.990	3	724	019.110	
L63	37 437.190	3	720	011.960	R59	38 755.940	3	722	550.910	
L64	37 301.110	3	719	830.450	R60	37 665.130	3	720	590.770	
L65	37 289.510	3	719	808.320	R61	37 472.360	3	720	223.230	
L66	37 201.610	3	719	640.560	R62	37 089.840	3	719	494.310	
L67	37 121.500	3	719	487.840	R63	36 797.280	3	718	938.140	
L68	36 866.220	3	719	001.190	R64	36 579.150	3	718	522.100	
L69	36 859.820	3	718	989.040	R65	36 385.410	3	718	152.080	
L70	36 633.920	3	718	559.090	R66	36 150.980	3	717	707.140	
L71	36 442.010	3	718	193.030	R67	35 937.640	3	717	301.860	
L72	36 188.970	3	717	711.590	R68	35 774.520	3	716	992.460	
L72X	35 966.451	3	717	289.138	R69	35 276.970	3	716	046.080	
L72Y	35 947.620	3	717	180.820	R70	35 153.230	3	715	891.940	
L72Z	35 943.510	3	717	160.290	R71	35 146.610	3	715	872.980	
L73	35 828.270	3	717	026.800	R72	35 096.210	3	715	706.250	
L74	35 563.190	3	716	522.160	R73	34 983.780	3	715	490.390	
L75	35 314.690	3	716	049.490	R74	34 974.850	3	715	470.400	
L76	35 231.870	3	715	891.760	R75	34 781.180	3	715	101.390	
L77	35 010.470	3	715	444.000	R76	34 610.650	3	714	776.470	
L78	35 000.350	3	715	426.070	R77	34 523.190	3	714	610.230	
L79	34 808.700	3	715	086.430	R78	34 496.450	3	714	558.700	
L80	34 590.200	3	714	669.770	R79	33 217.770	3	712	127.110	
L81	34 577.990	3	714	646.550	R80	32 970.800	3	711	655.540	
L82	34 486.350	3	714	472.270	R81	32 794.330	3	711	320.900	
L83	34 321.360	3	714	158.470	R82	32 531.640	3	710	820.800	
L84	33 965.470	3	713	480.810	R83	32 355.620	3	710	484.370	
L85	33 753.920	3	713	078.460	R84	32 202.520	3	710	194.080	
L86	33 465.680	3	712	530.560	R85	31 974.850	3	709	761.590	
L87	33 258.150	3	712	135.440	R86	31 928.190	3	709	672.330	
L88	33 245.820	3	712	111.810	R87	31 886.740	3	709	593.030	
L89	32 998.260	3	711	640.550	R88	31 775.870	3	709	382.310	
L90	32 825.320	3	711	311.330	R89	31 623.160	3	709	091.680	
L91	32 561.880	3	710	809.690	R90	31 523.470	3	708	902.150	
L92	32 347.680	3	710	402.480	R91	31 520.210	3	708	895.940	
L93	31 981.070	3	709	703.820	R92	31 467.260	3	708	795.270	
L94	31 917.560	3	709	583.550	R93	31 141.870	3	708	177.660	
L94X	31 905.870	3	709	561.580	R94	31 051.090	3	708	005.260	
L95	31 891.740	3	709	534.010	R95	30 587.490	3	707	129.670	
L96	31 750.250	3	709	265.750	R95X	30 464.490	3	706	905.360	
L97	31 555.850	3	708	895.580	R95Y	30 468.450	3	706	904.840	
L98	31 552.240	3	708	888.700	R96	30 424.340	3	706	832.220	
					Vel	9	Van	11	P760/09	
					Sheet		of			

PADRESERWE KOÖRDINATE / ROAD RESERVE CO-ORDINATES									
LINKERKANT/LEFT HAND SIDE					REGTERKANT/RIGHT HAND SIDE				
	Y		X	WG 19°		Y		X	WG 19°
L99	31 077.850	3	707	988.640	R97	30 363.010	3	706	731.310
L100	30 945.610	3	707	739.510	R98	30 324.300	3	706	681.530
L101	30 675.200	3	707	227.950	R99	30 161.270	3	706	471.930
L102	30 672.430	3	707	181.110	R100	30 155.510	3	706	465.180
L103	30 641.440	3	707	115.070	R101	30 067.800	3	706	379.730
L104	30 596.630	3	707	079.120	R102	30 049.650	3	706	362.060
L105	30 578.260	3	707	044.550	R103	29 892.590	3	706	209.060
L106	30 535.780	3	706	848.080	R104	29 801.020	3	706	133.500
L107	30 510.210	3	706	844.250	R105	29 670.880	3	706	040.750
L108	30 393.940	3	706	707.570	R106	29 540.400	3	705	959.500
L109	30 337.220	3	706	618.280	R107	29 449.510	3	705	911.010
L110	30 315.800	3	706	586.980	R108	29 386.580	3	705	877.350
L111	30 255.170	3	706	524.520	R109	28 624.070	3	705	546.420
L112	30 197.670	3	706	449.100	R110	28 582.070	3	705	528.190
L113	30 117.700	3	706	354.670	R111	28 576.130	3	705	525.610
L114	30 067.600	3	706	295.530	R112	28 553.910	3	705	515.970
L115	30 037.900	3	706	266.380	R113	28 328.320	3	705	418.050
L116	29 991.780	3	706	223.240	R114	28 129.690	3	705	331.970
L117	29 925.320	3	706	166.180	R115	28 109.430	3	705	323.160
L118	29 883.520	3	706	132.840	R116	28 043.350	3	705	294.430
L119	29 830.100	3	706	092.380	R117	28 001.880	3	705	279.910
L120	29 751.720	3	706	038.360	R118	27 966.210	3	705	269.540
L121	29 695.520	3	706	002.080	R119	27 926.500	3	705	260.850
L122	29 553.690	3	705	921.120	R120	27 888.250	3	705	255.570
L123	29 476.630	3	705	883.440	R121	27 810.300	3	705	251.300
L124	29 439.090	3	705	865.210	R122	27 606.750	3	705	266.710
L125	28 646.950	3	705	521.930	R123	27 543.240	3	705	270.870
L126	28 619.130	3	705	509.820	R124	27 507.340	3	705	270.100
L127	28 616.780	3	705	508.800	R125	27 485.400	3	705	268.510
L128	28 591.530	3	705	497.880	R126	27 452.800	3	705	264.930
L129	28 492.230	3	705	454.930	R127	27 387.980	3	705	252.880
L130	28 429.410	3	705	427.660	R128	27 351.600	3	705	243.280
L131	28 155.900	3	705	309.450	R129	27 315.970	3	705	230.510
L132	28 141.160	3	705	301.600	R130	27 267.970	3	705	209.310
L133	28 031.740	3	705	256.240	R131	27 247.000	3	705	200.050
L134	27 998.170	3	705	245.170	R132	27 208.100	3	705	177.710
L135	27 909.230	3	705	226.080	R133	27 186.220	3	705	163.330
L136	27 816.470	3	705	218.950	R134	26 956.820	3	705	007.620
L137	27 551.870	3	705	238.190	R135	26 766.100	3	704	878.480
L138	27 442.820	3	705	231.000	R136	26 747.740	3	704	866.090
L139	27 343.960	3	705	200.690	R137	26 627.450	3	704	784.920
L140	27 167.401	3	705	112.639	R138	26 465.780	3	704	692.000
L141	26 801.934	3	704	864.370	R139	26 318.100	3	704	556.210
L142	26 767.390	3	704	838.920	R140	26 305.210	3	704	546.990
L143	26 459.860	3	704	612.460	R141	26 277.760	3	704	516.400
L144	26 368.070	3	704	534.670	R142	26 221.280	3	704	456.940
L145	26 346.830	3	704	512.470	R143	26 205.890	3	704	445.270
L146	26 341.280	3	704	503.160	R144	26 199.560	3	704	441.340
L147	26 278.350	3	704	397.540	R145	26 190.890	3	704	441.730
L148	26 377.820	3	704	357.310	R146	26 180.830	3	704	444.790
L149	26 371.660	3	704	343.240	R147	26 168.170	3	704	448.400
					Vel 10 Van 11 Sheet of P760/09				

PADRESERWE KOÖRDINATE / ROAD RESERVE CO-ORDINATES									
LINKERKANT/LEFT HAND SIDE					REGTERKANT/RIGHT HAND SIDE				
Y	X	WG 19°	Y	X	WG 19°	Y	X	WG 19°	Y
			R148	26 144.930	3 704	455.040			
			R149	26 143.270	3 704	448.670			
			R150	26 140.750	3 704	439.290			