
**GOVERNMENT NOTICE
GOEWERMENTSKENNISGEWING**

**DEPARTMENT OF TRANSPORT
DEPARTEMENT VAN VERVOER**

No. 1173

5 November 2008

**THE SOUTH AFRICAN NATIONAL ROADS
AGENCY LIMITED**

Registration No: 98/09584/06

DECLARATION AMENDMENT OF NATIONAL ROAD N6 SECTION 8

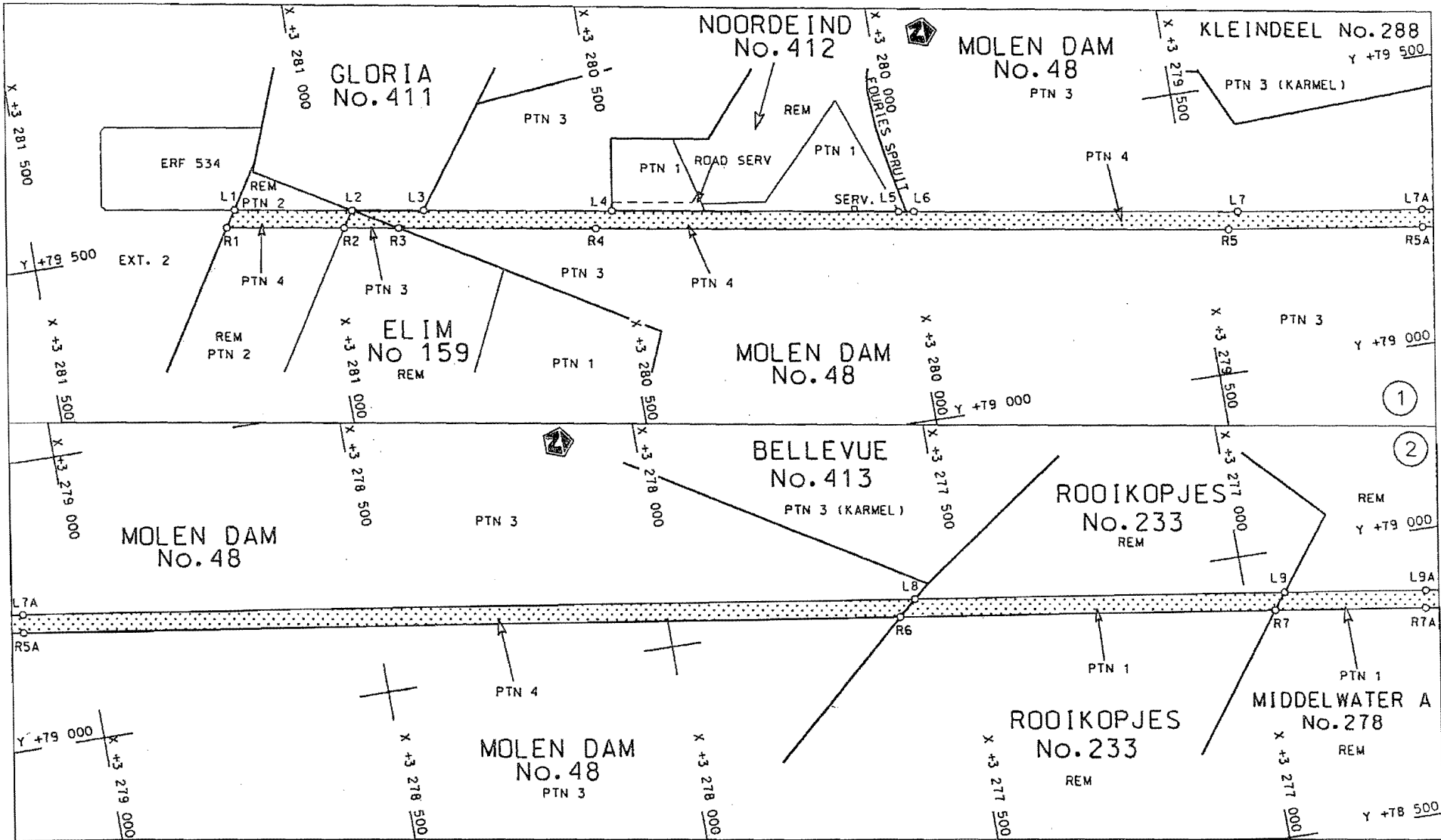
AMENDMENT OF DECLARATION NO. 930 OF 2006

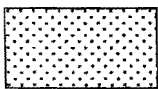
By virtue of section 40 (1)(b) of the South African National Roads Agency Limited and the National Roads Act, 1998 (Act No. 7 of 1998), I hereby amend Declaration No. 930 of 2006 by substituting Annexure paragraph (II) and (III), with the subjoined sheets 1 to 13 of Plan No. P679/08.

[National Road N6 Section 8: Reddersburg – N1(Bloemfontein)]

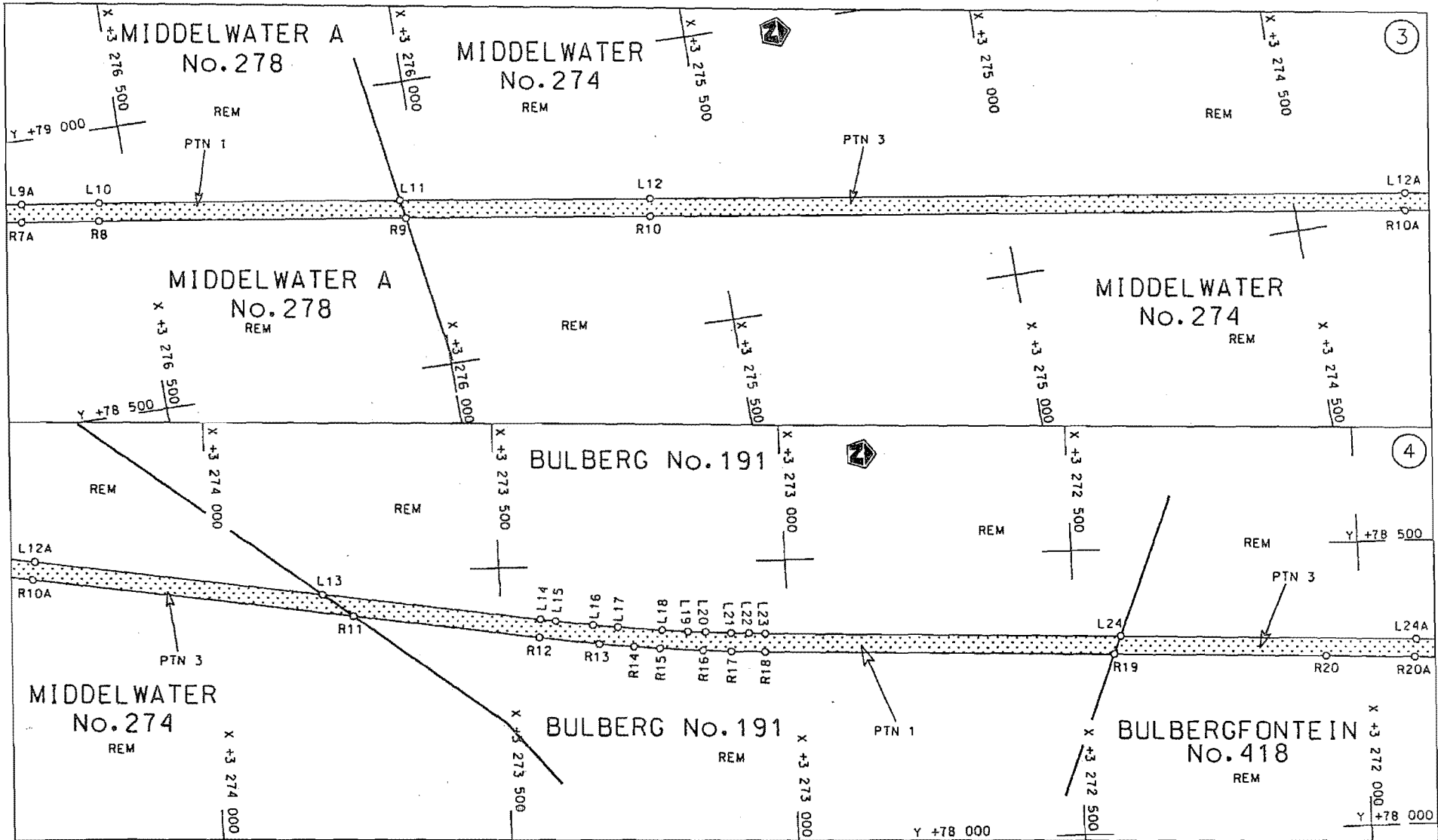


MINISTER OF TRANSPORT



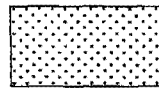
Die Suid Afrikaanse Nasionale Padogentskap Beperk	Die figuur getoon		Vel Sheet 1 van 13
The South African National Roads Agency Limited	The figure shown		steldie padreserwe voor van 'n gedeelte represents the road reserve of a portion von Nasionale Raete of National Route N6 Seksie Section 8

D.O.9.A



Die Suid Afrikaanse Nasionale Padogentskap Beperk
The South African National Roads Agency Limited

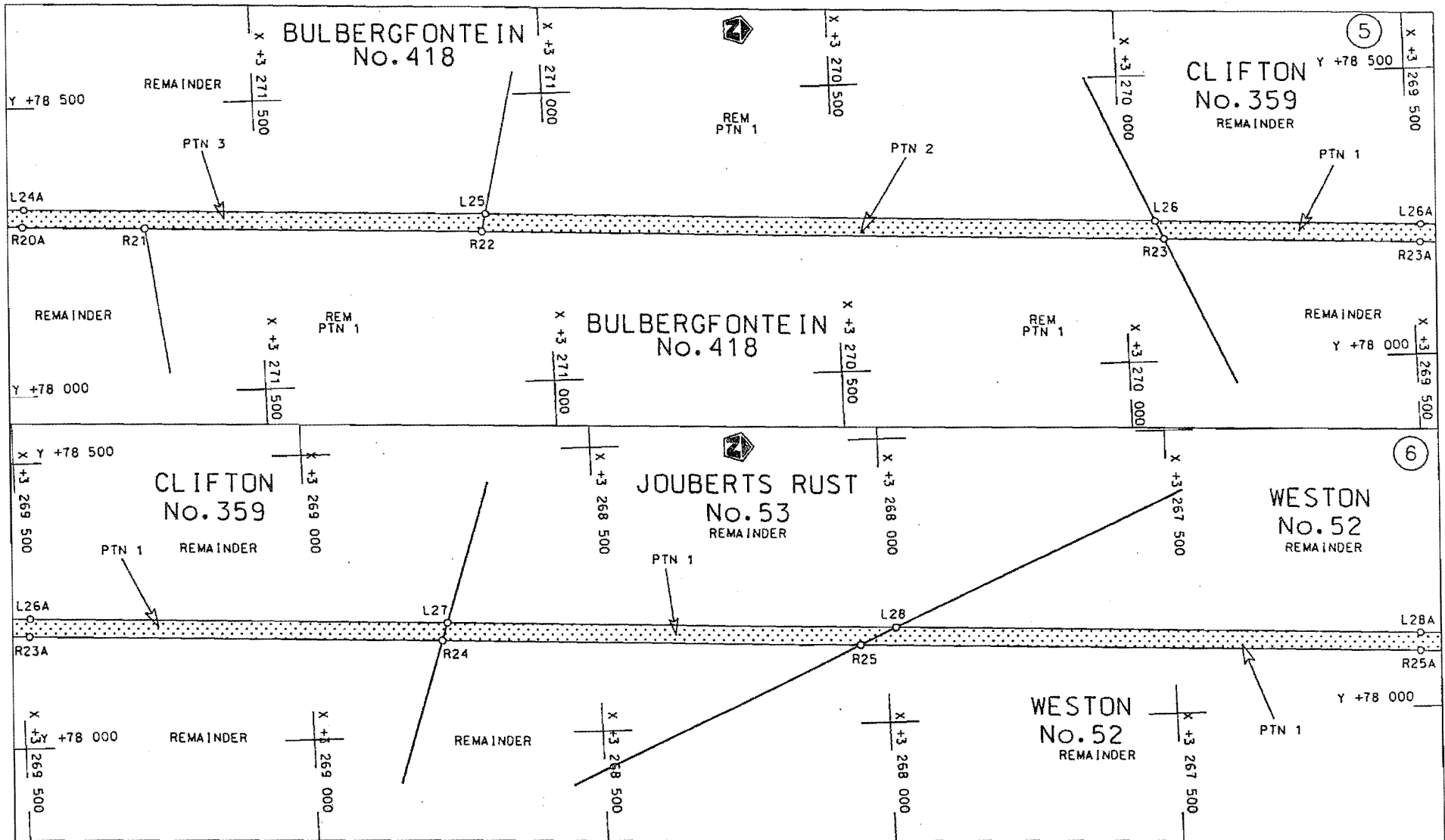
Die figuur getoon
The figure shown

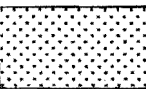


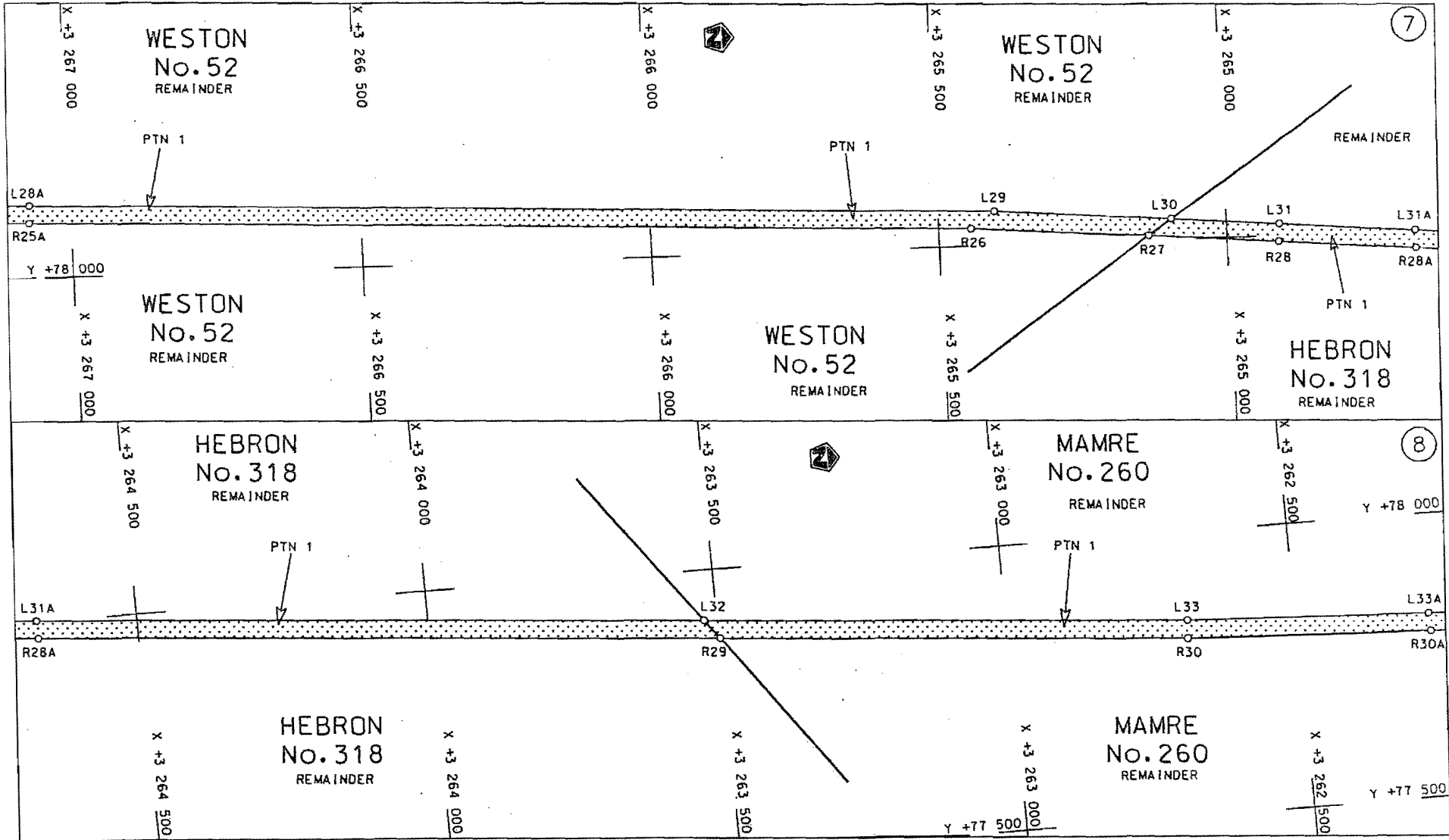
steldie padreserwe voor van 'n gedeelte
represents the road reserve of a portion
van Nasionale Roete N6 Sektie 8
of National Route N6 Section 8

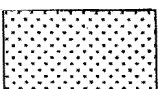
Vel
Sheet 2 van
of 13

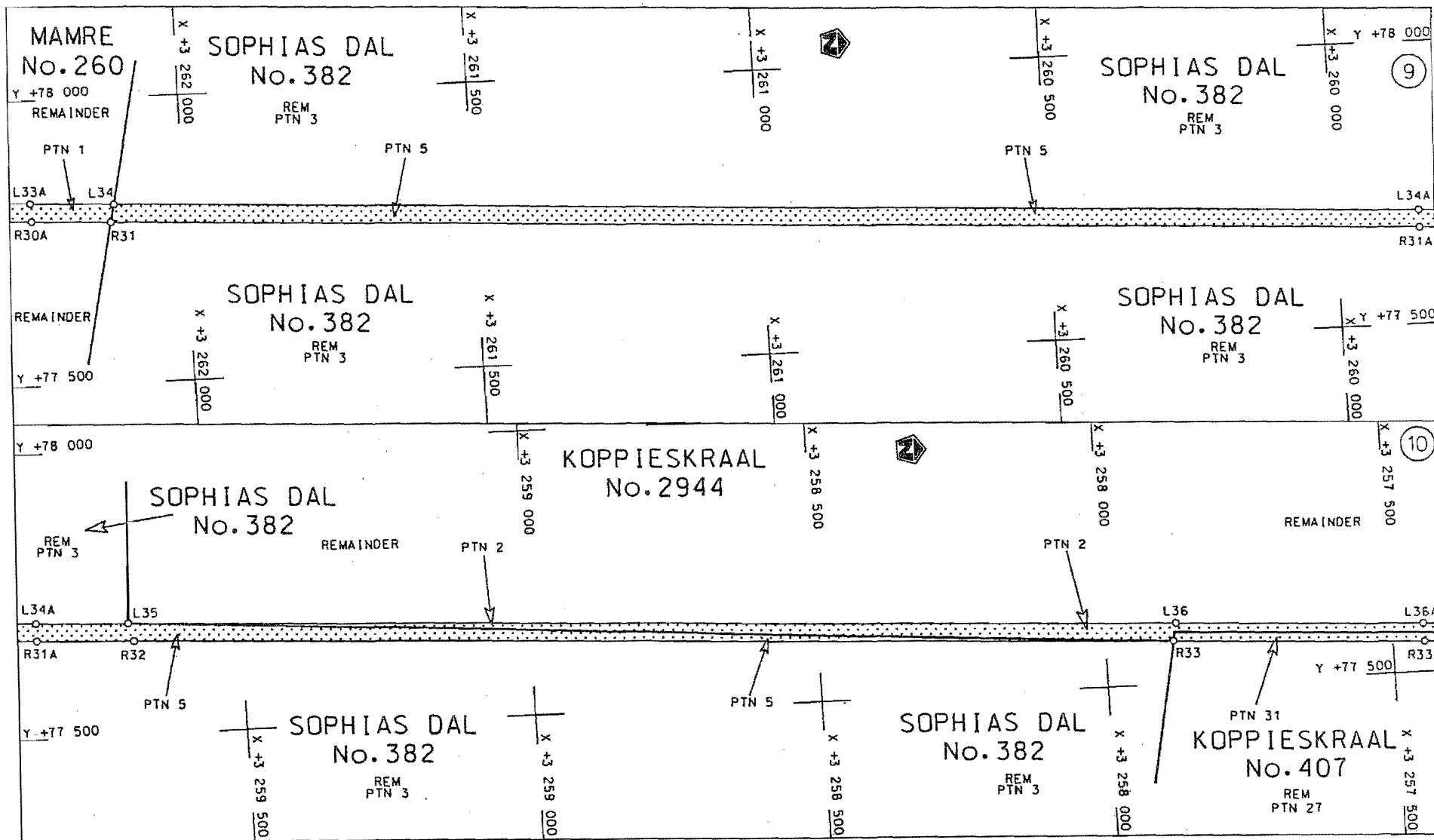
Plan P679/08

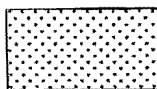


<p>Die Suid Afrikaanse Nasionale Padagentskap Beperk The South African National Roads Agency Limited</p>	<p>Die figuur getoon The figure shown</p>		<p>steldie padreserwe voor van 'n gedeelte represents the road reserve of a portion van Nasionale Roete N6 Seksie of National Route 8 Section</p>	<p>Vel Sheet 3 van of 13 Plan P679/08</p>
--	---	--	---	---



<p>Die Suid Afrikaanse Nasionale Padogentskap Beperk The South African National Roads Agency Limited</p>	<p>Die figuur getoon The figure shown</p>		<p>Vel Sheet 4 van 13 of</p>
<p>stel die padreserwe voor van 'n gedeelte represents the road reserve of a portion van Nasionale Roete N6 Seksie 8 of National Route</p>			<p>Plan P679/08</p>

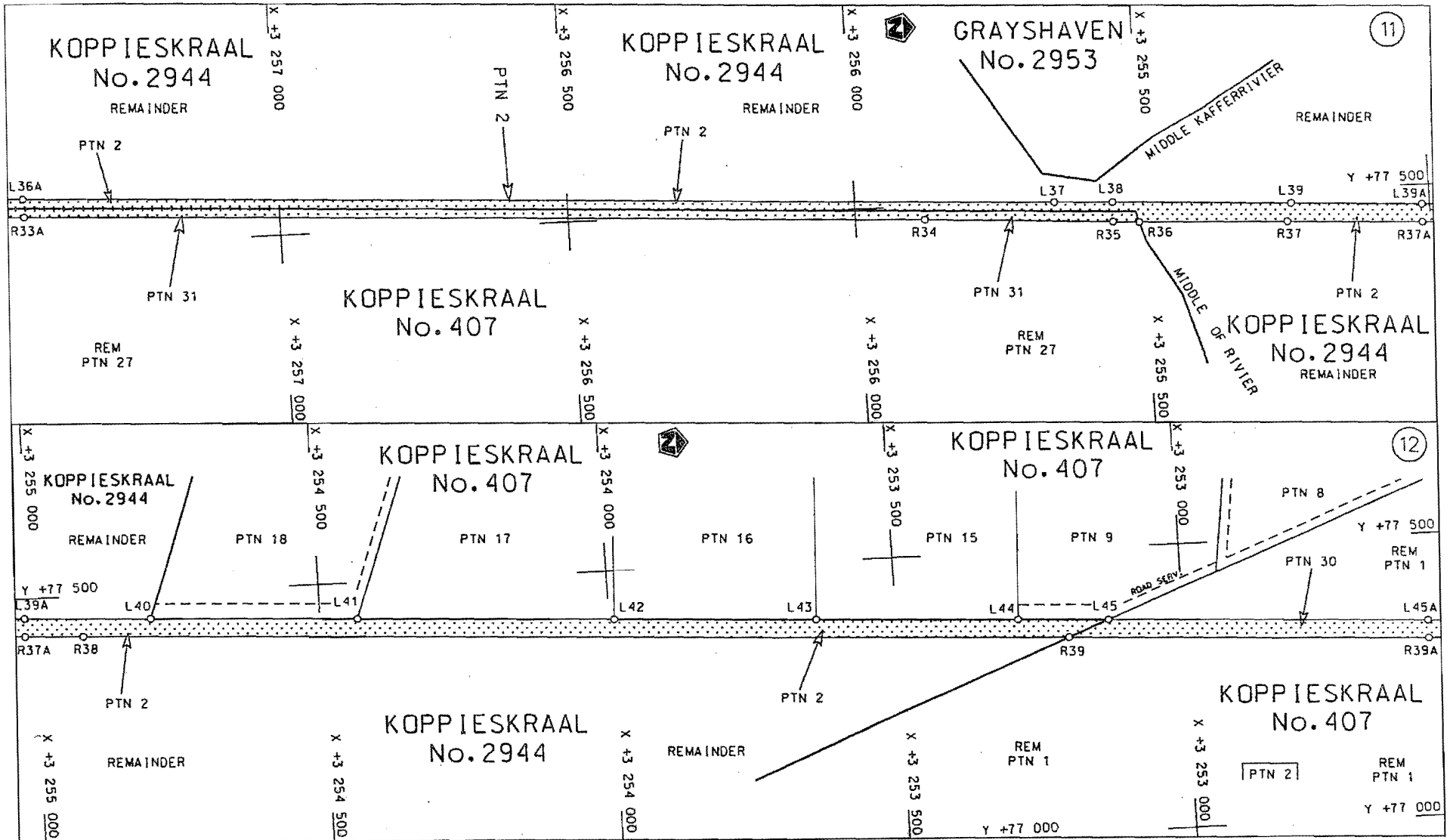


Die Suid Afrikaanse Nasionale Padagentskap Beperk The South African National Roads Agency Limited	Die figuur getoon The figure shown		steldie padreserwe voor van 'n gedeelte represents the road reserve of a portion van Nasionale Roete N6 of National Route Section	Vel Sheet 5 van 13
				Plan P679/08

D.O.9.A

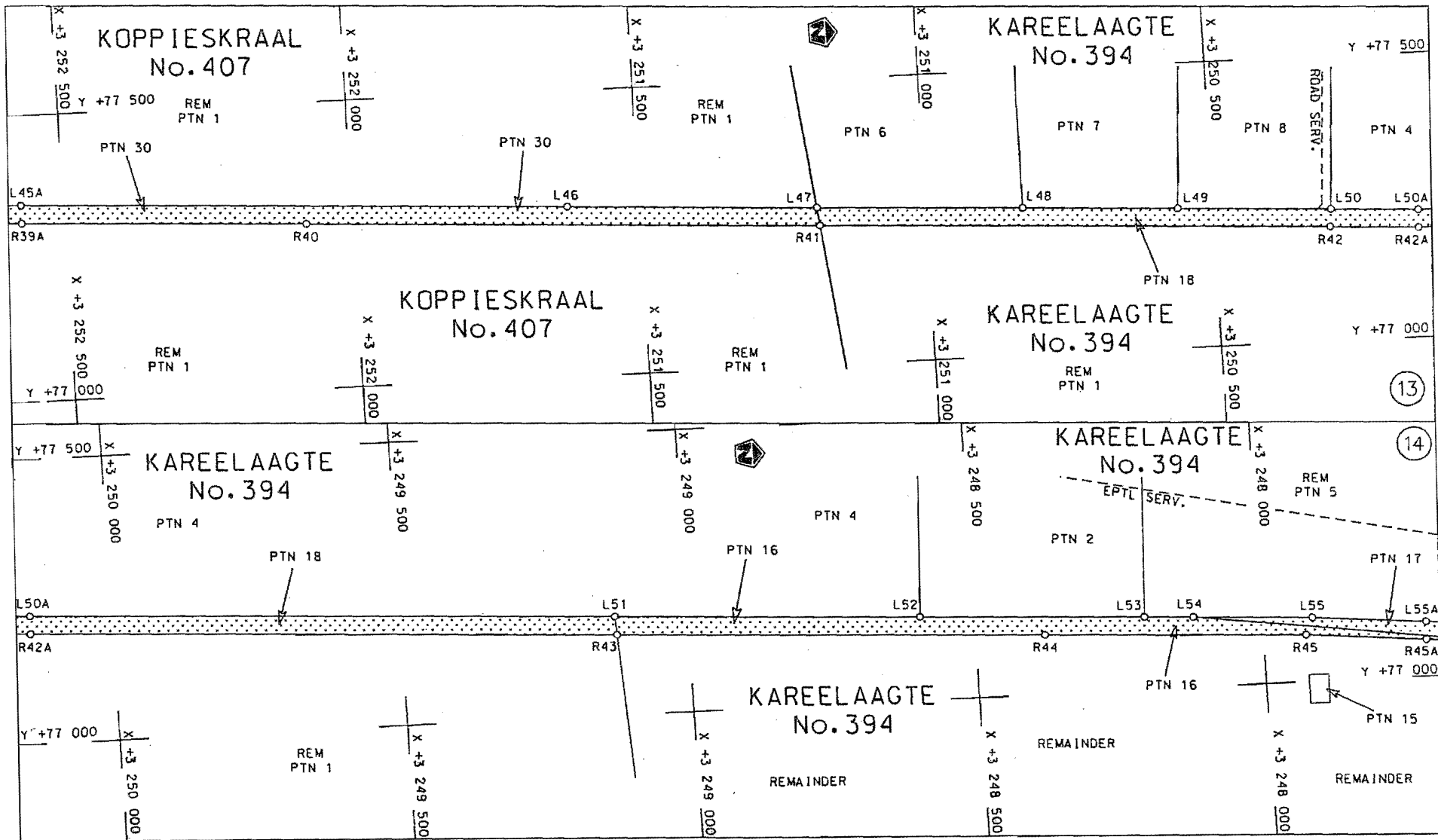
STAATSKOEFERANT, 5 NOVEMBER 2008

No. 31570 9



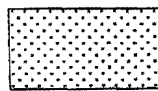
<p>Die Suid Afrikaanse Nasionale Padagentskap Beperk The South African National Roads Agency Limited</p>	<p>Die figuur getoon The figure shown</p>	<p>stel die padreserwe voor van 'n gedeelte represents the road reserve of a portion van Nasionale Roete N6 of National Route</p>	<p>Vel Sheet 6 van of 13 Plan P679/08</p>
--	---	---	---

D.O.9.A



Die Suid Afrikaanse Nasionale Padagentskap Beperk
The South African National Roads Agency Limited

Die figuur getoon
The figure shown

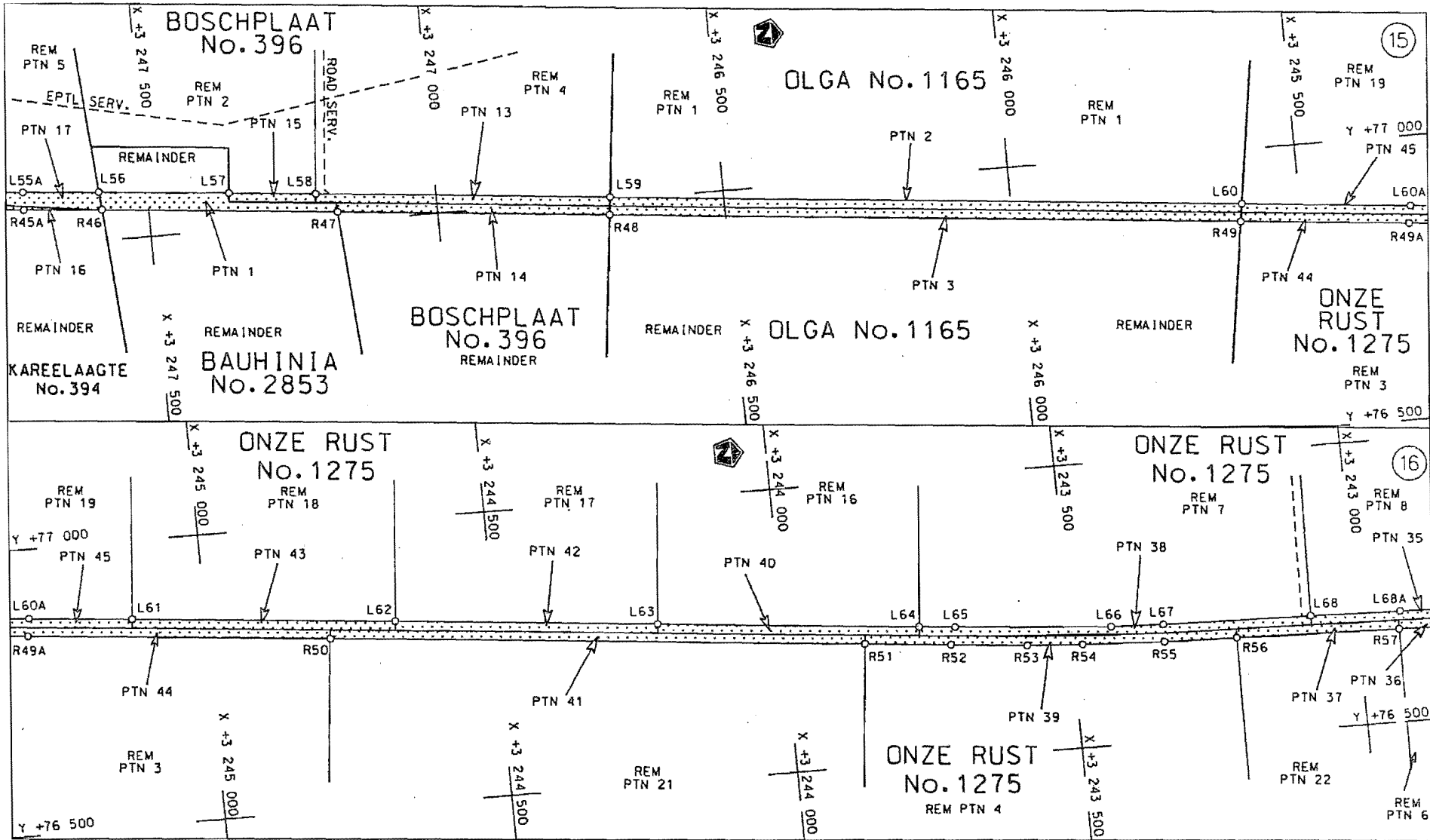


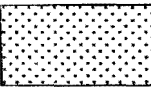
steldie padreserwe voor van 'n gedeelte
represents the road reserve of a portion
van Nasionale Roete N6 Seksie 8
of National Route

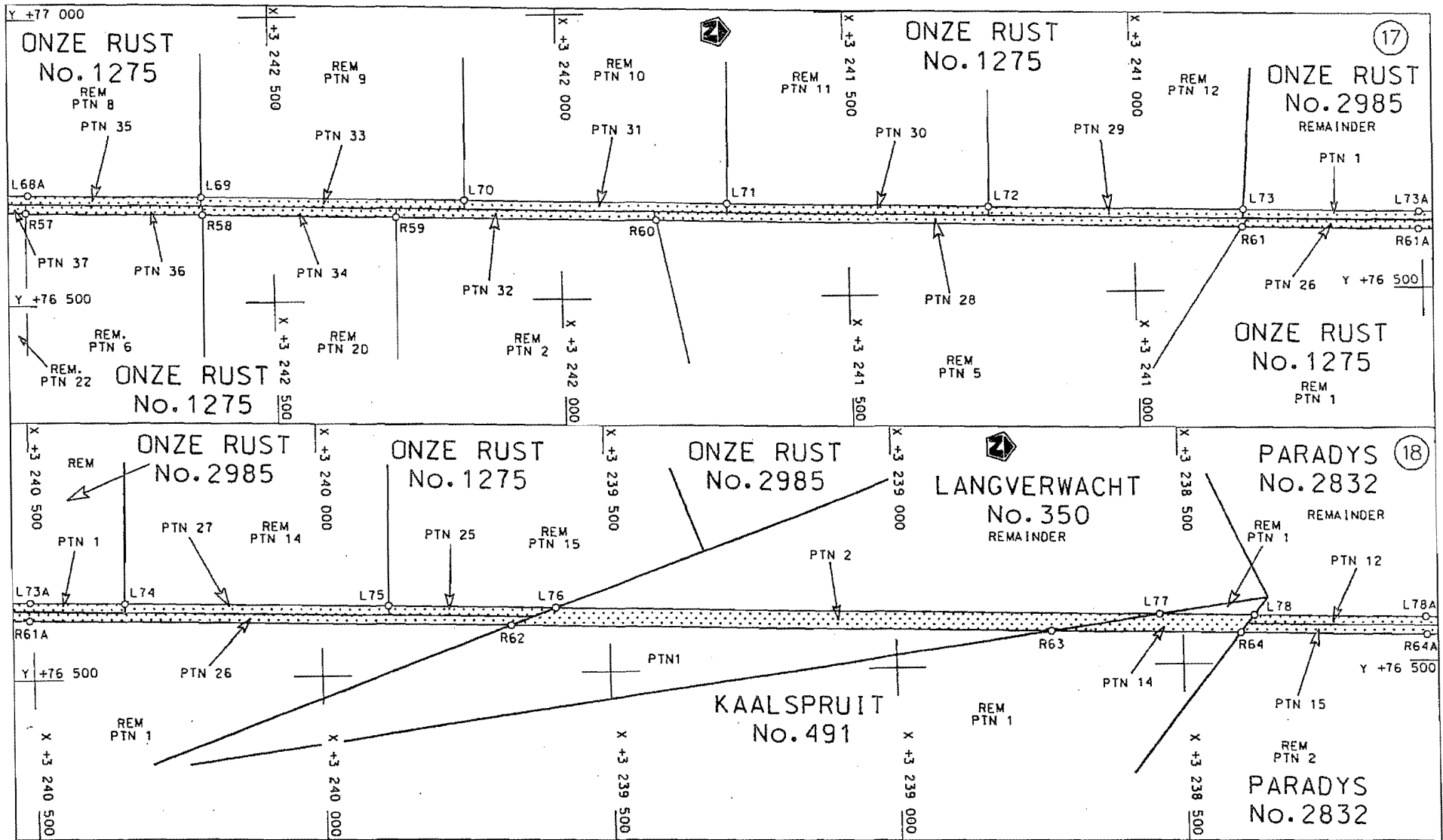
Vel Sheet 7 van 13

Plan P679/08

D.O.9.A

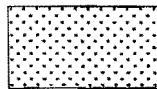


<p>Die Suid Afrikaanse Nasionale Padagentskap Beperk The South African National Roads Agency Limited</p>	<p>Die figuur getoon The figure shown</p>		<p>steldie podreserwe voor van 'n gedeelte represents the road reserve of a portion van Nasionale Roete N6 Seksie Section 8 of National Route</p>	<p>Vel Sheet 8 van of 13 Plan P679/08</p>
--	---	--	---	---



Die Suid Afrikaanse Nasionale Padagentskap Beperk
The South African National Roads Agency Limited

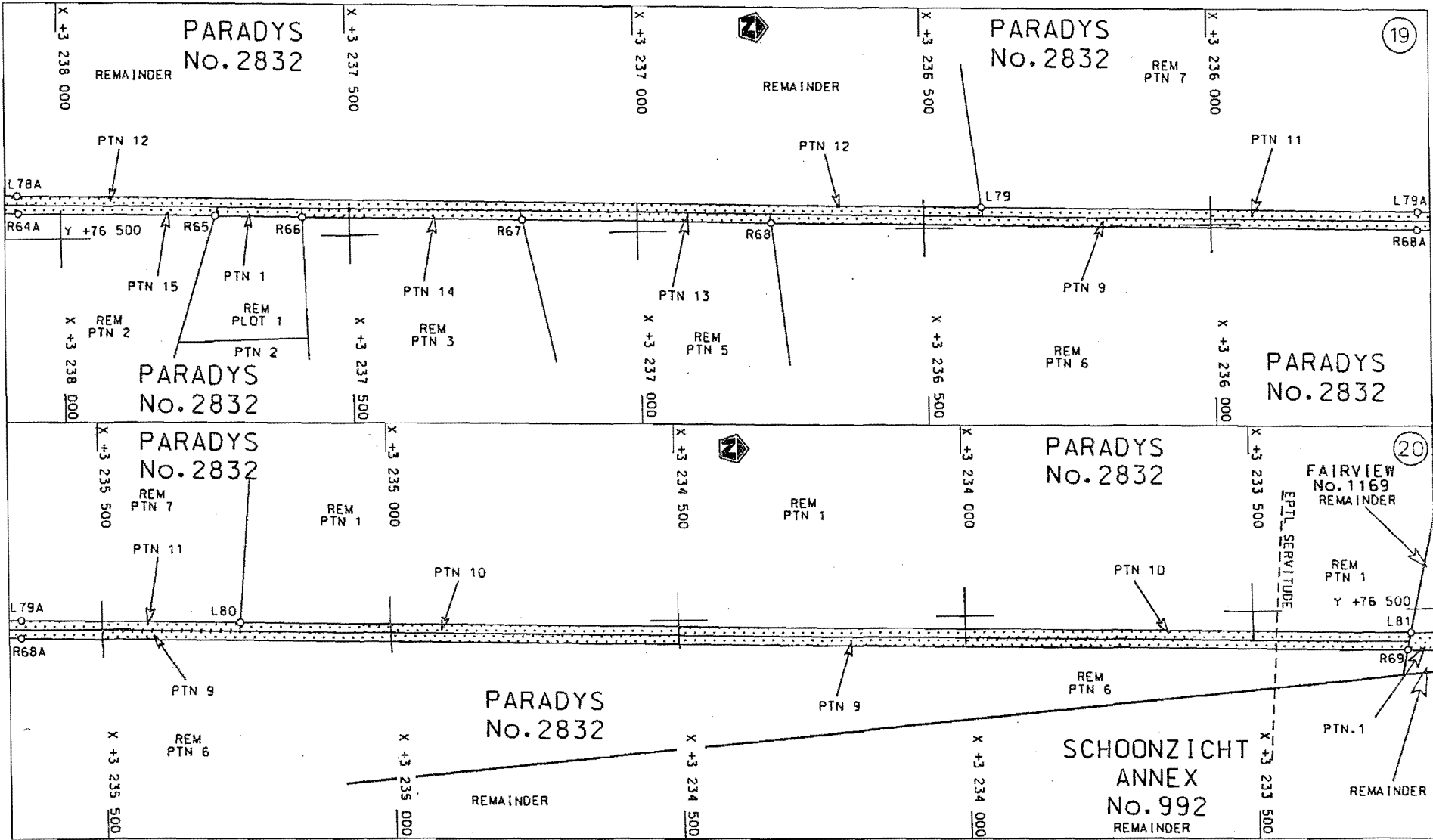
Die figuur getoon
The figure shown

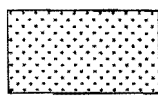


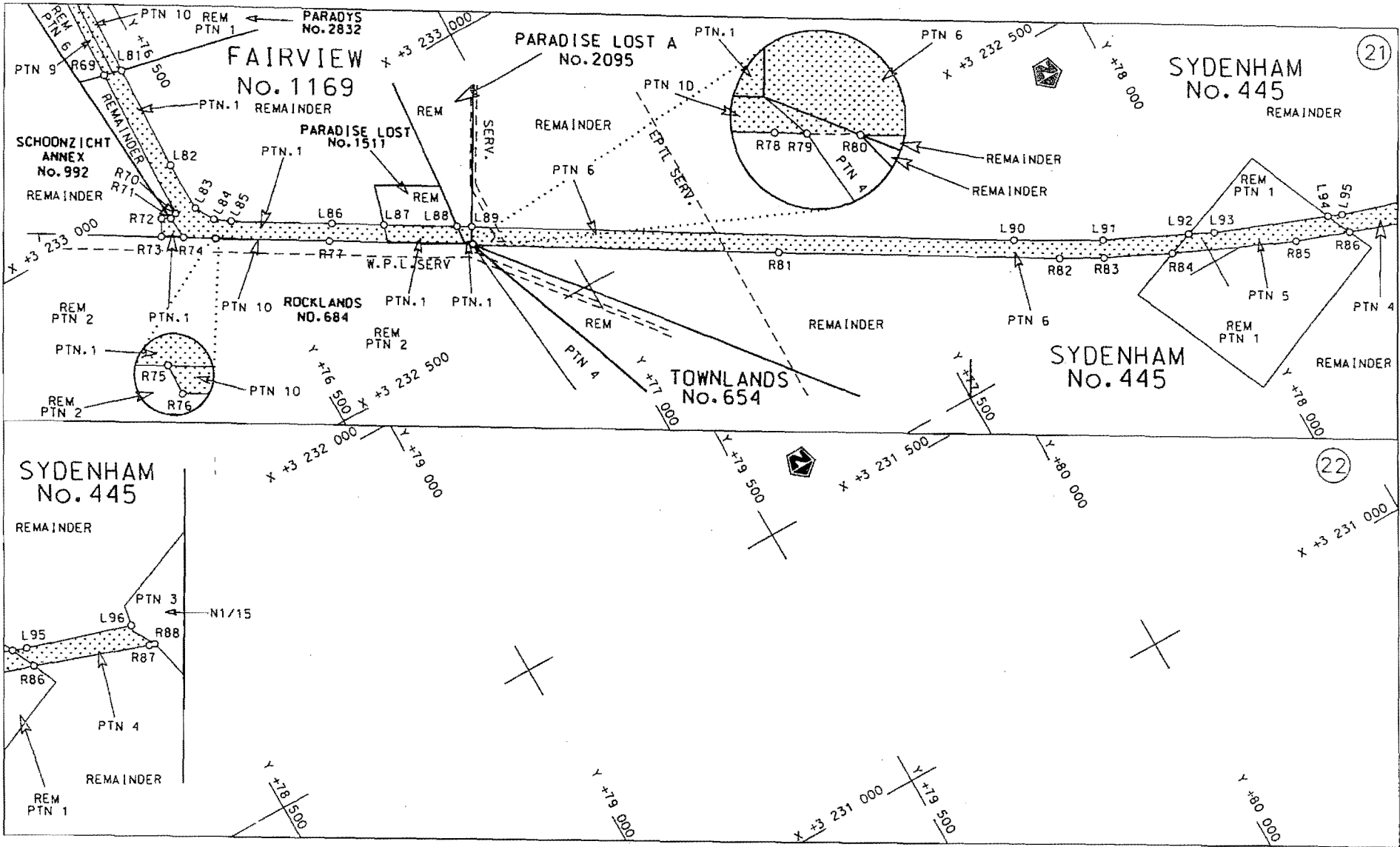
steldie padreserwe voor van 'n gedeelte
represents the road reserve of a portion
van Nasionale Roete N6 Seksie 8
of National Route N6 Section 8

Vel Sheet 9 van 13
Plan P679/08

D.O.9.A

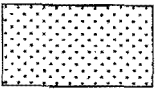


<p>Die Suid Afrikaanse Nasionale Padagentskap Beperk The South African National Roads Agency Limited</p>	<p>Die figuur getoon The figure shown</p> 	<p>steldie padreserwe voor van 'n gedeelte represents the road reserve of a portion van Nasionale Roete N6 Seksie 8 of National Route Section</p>	<p>Vel Sheet 10 van of 13 Plan P679/08</p>
--	--	---	--



STAATSKOERANT, 5 NOVEMBER 2008

No. 31570 15

Die Suid Afrikaanse Nasionale Padogenskap Beperk The South African National Roads Agency Limited	Die figuur getoon The figure shown		Vel Sheet 11 von of 13
steldie padreserwe voor van 'n gedeelte represents the road reserve of a portion von Nasionale Roete of National Route N6 Seksie Section 8			Plon P679/08

D.O.9.A

PADRESERWE KOÖRDINATE / ROAD RESERVE CO-ORDINATES						
LINKERKANT/LEFT HAND SIDE				REGTERKANT/RIGHT HAND SIDE		
	Y	X	WG 27°		Y	X
L1	79 550.47	3 281 140.57		R1	79 521.19	3 281 159.02
L2	79 518.54	3 280 940.29		R2	79 489.62	3 280 958.51
L3	79 499.30	3 280 818.05		R3	79 474.83	3 280 865.82
L4	79 448.29	3 280 495.78		R4	79 421.26	3 280 528.59
L5	79 370.04	3 280 002.00		R5	79 249.63	3 279 440.21
L6	79 365.85	3 279 975.57		R6	78 988.18	3 277 598.73
L7	79 278.55	3 279 419.35		R7	78 896.58	3 276 953.34
L8	79 015.47	3 277 567.64		R8	78 840.65	3 276 560.71
L9	78 925.65	3 276 931.71		R9	78 763.35	3 276 033.59
L10	78 871.85	3 276 554.46		R10	78 700.44	3 275 612.29
L11	78 796.01	3 276 038.23		R11	78 423.11	3 273 754.79
L12	78 731.67	3 275 606.98		R12	78 375.24	3 273 434.48
L13	78 462.98	3 273 806.94		R13	78 361.23	3 273 330.65
L14	78 406.96	3 273 431.01		R14	78 354.71	3 273 269.82
L15	78 403.11	3 273 404.55		R15	78 350.45	3 273 224.23
L16	78 394.48	3 273 340.01		R16	78 344.64	3 273 149.18
L17	78 389.67	3 273 297.01		R17	78 341.56	3 273 100.06
L18	78 381.75	3 273 219.61		R18	78 339.11	3 273 041.85
L19	78 378.22	3 273 174.65		R19	78 314.60	3 272 432.60
L20	78 376.16	3 273 143.73		R20	78 299.84	3 272 063.90
L21	78 373.51	3 273 099.55		R21	78 284.93	3 271 696.16
L22	78 372.10	3 273 068.65		R22	78 261.20	3 271 114.95
L23	78 370.86	3 273 040.38		R23	78 213.11	3 269 928.27
L24	78 345.57	3 272 420.24		R24	78 166.04	3 268 771.78
L25	78 292.31	3 271 107.68		R25	78 136.40	3 268 045.31
L26	78 244.95	3 269 942.61		R26	78 030.66	3 265 443.83
L27	78 196.96	3 268 761.74		R27	78 007.55	3 265 134.90
L28	78 164.96	3 267 982.02		R28	77 989.83	3 264 911.55
L29	78 060.01	3 265 401.78		R29	77 876.09	3 263 497.30
L30	78 035.66	3 265 094.43		R30	77 810.52	3 262 687.52
L31	78 020.98	3 264 909.33		R31	77 783.27	3 262 128.88
L32	77 909.79	3 263 522.08		R32	77 663.55	3 259 685.66
L33	77 842.63	3 262 685.38		R33	77 574.35	3 257 879.84
L34	77 814.91	3 262 122.09		R34	77 475.64	3 255 879.50
L35	77 695.21	3 259 694.31		R35	77 456.80	3 255 551.48
L36	77 605.82	3 257 873.61		R36	77 454.19	3 255 506.01
L37	77 496.07	3 255 652.61		R37	77 443.85	3 255 249.64
L38	77 491.61	3 255 550.63		R38	77 427.78	3 254 911.95
L39	77 476.10	3 255 241.34		R39	77 342.89	3 253 201.30
L40	77 453.45	3 254 794.02		R40	77 287.49	3 252 081.64
L41	77 435.69	3 254 435.57		R41	77 243.42	3 251 187.77
L42	77 413.65	3 253 990.76		R42	77 199.68	3 250 297.90
L43	77 396.24	3 253 639.35		R43	77 141.18	3 249 126.08
L44	77 378.83	3 253 287.96		R44	77 104.79	3 248 379.19
L45	77 371.01	3 253 130.15		R45	77 082.18	3 247 925.83
L46	77 296.50	3 251 625.68		R46	77 053.43	3 247 580.58
L47	77 275.13	3 251 191.65		R47	77 016.27	3 247 173.42
L48	77 257.42	3 250 830.70		R48	76 973.29	3 246 701.97
L49	77 244.17	3 250 560.77		R49	76 873.07	3 245 604.08
L50	77 231.12	3 250 294.94		R50	76 798.44	3 244 788.26
L51	77 173.34	3 249 128.00		R51	76 713.72	3 243 860.05

Vel	12	Van	13	P679/08
Sheet		of		

PADRESERWE KOÖRDINATE / ROAD RESERVE CO-ORDINATES

LINKERKANT/LEFT HAND SIDE

REGTERKANT/RIGHT HAND SIDE

	Y	X	WG 27°		Y	X
L52	77 146.94	3 248	594.86	R52	76 699.70	3 243 709.24
L53	77 127.62	3 248	204.65	R53	76 687.57	3 243 576.39
L54	77 123.38	3 248	119.10	R54	76 681.35	3 243 481.32
L55	77 112.35	3 247	912.70	R55	76 674.32	3 243 337.67
L56	77 085.35	3 247	583.01	R56	76 671.21	3 243 211.65
L57	77 065.09	3 247	358.56	R57	76 663.96	3 242 928.37
L58	77 051.12	3 247	208.64	R58	76 656.67	3 242 621.19
L59	77 004.66	3 246	698.30	R59	76 648.40	3 242 284.91
L60	76 904.23	3 245	599.35	R60	76 637.33	3 241 833.06
L61	76 861.04	3 245	127.46	R61	76 612.20	3 240 811.38
L62	76 819.61	3 244	672.18	R62	76 584.25	3 239 669.72
L63	76 778.16	3 244	216.85	R63	76 561.14	3 238 728.69
L64	76 736.26	3 243	761.59	R64	76 553.10	3 238 398.87
L65	76 730.63	3 243	698.66	R65	76 536.73	3 237 731.60
L66	76 708.89	3 243	428.44	R66	76 533.06	3 237 581.77
L67	76 705.55	3 243	336.47	R67	76 523.68	3 237 200.55
L68	76 699.45	3 243	080.08	R68	76 513.08	3 236 766.90
L69	76 688.20	3 242	623.03	R69	76 426.50	3 233 233.45
L70	76 677.12	3 242	166.04	R70	76 419.79	3 232 961.21
L71	76 665.73	3 241	709.01	R71	76 407.88	3 232 957.27
L72	76 654.48	3 241	251.96	R72	76 393.46	3 232 965.51
L73	76 643.62	3 240	809.01	R73	76 377.13	3 232 937.39
L74	76 632.06	3 240	338.64	R74	76 411.35	3 232 917.61
L75	76 620.82	3 239	881.59	R75	76 459.81	3 232 889.60
L76	76 613.71	3 239	591.08	R76	76 459.78	3 232 887.65
L77	76 588.03	3 238	539.08	R77	76 634.12	3 232 787.92
L78	76 583.79	3 238	374.78	R78	76 852.27	3 232 661.38
L79	76 535.45	3 236	399.48	R79	76 853.19	3 232 660.85
L80	76 507.69	3 235	259.73	R80	76 854.70	3 232 659.97
L81	76 457.90	3 233	226.40	R81	77 325.95	3 232 386.96
L82	76 453.45	3 233	039.03	R82	77 760.69	3 232 136.63
L83	76 455.52	3 232	953.80	R83	77 830.57	3 232 100.34
L84	76 475.04	3 232	919.72	R84	77 940.66	3 232 048.28
L85	76 500.37	3 232	902.00	R85	78 145.24	3 231 961.01
L86	76 653.94	3 232	813.46	R86	78 237.69	3 231 930.05
L87	76 733.29	3 232	767.65	R87	78 434.39	3 231 864.12
L88	76 845.45	3 232	702.86	R88	78 444.28	3 231 861.66
L89	76 868.24	3 232	689.66			
L90	77 705.76	3 232	203.79			
L91	77 845.01	3 232	128.79			
L92	77 983.32	3 232	064.70			
L93	78 025.00	3 232	045.39			
L94	78 218.20	3 231	973.34			
L95	78 242.15	3 231	964.40			
L96	78 422.98	3 231	910.22			