
**GOVERNMENT NOTICE
GOEWERMENTSKENNISGEWING**

**DEPARTMENT OF TRANSPORT
DEPARTEMENT VAN VERVOER**

No. 983

22 September 2008

**THE SOUTH AFRICAN NATIONAL ROADS
AGENCY LIMITED**

Registration No: 98/09584/06

DECLARATION AMENDMENT OF NATIONAL ROAD N8 SECTION 8

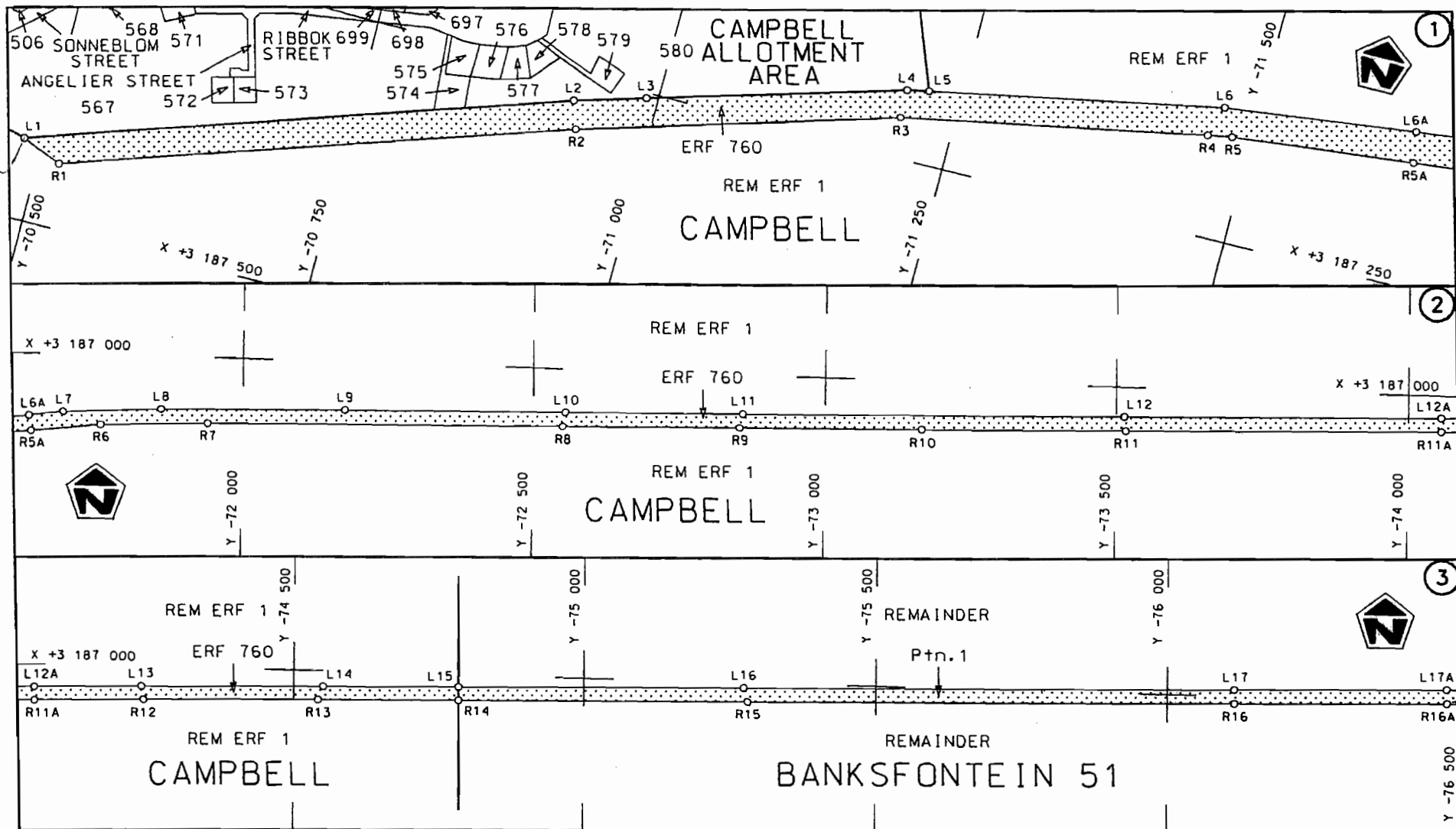
AMENDMENT OF DECLARATION No. 284 OF 2006

By virtue of section 40 (1)(b) of the South African National Roads Agency Limited and the National Roads Act, 1998 (Act No. 7 of 1998), I hereby amend Declaration No. 284 of 2006 by substituting the section of the descriptive declaration from Campbell to Kimberley, with the subjoined sheets 1 to 19 of Plan No. P663/08.

(National Road N8 Section 8: Campbell - Kimberley)



MINISTER OF TRANSPORT



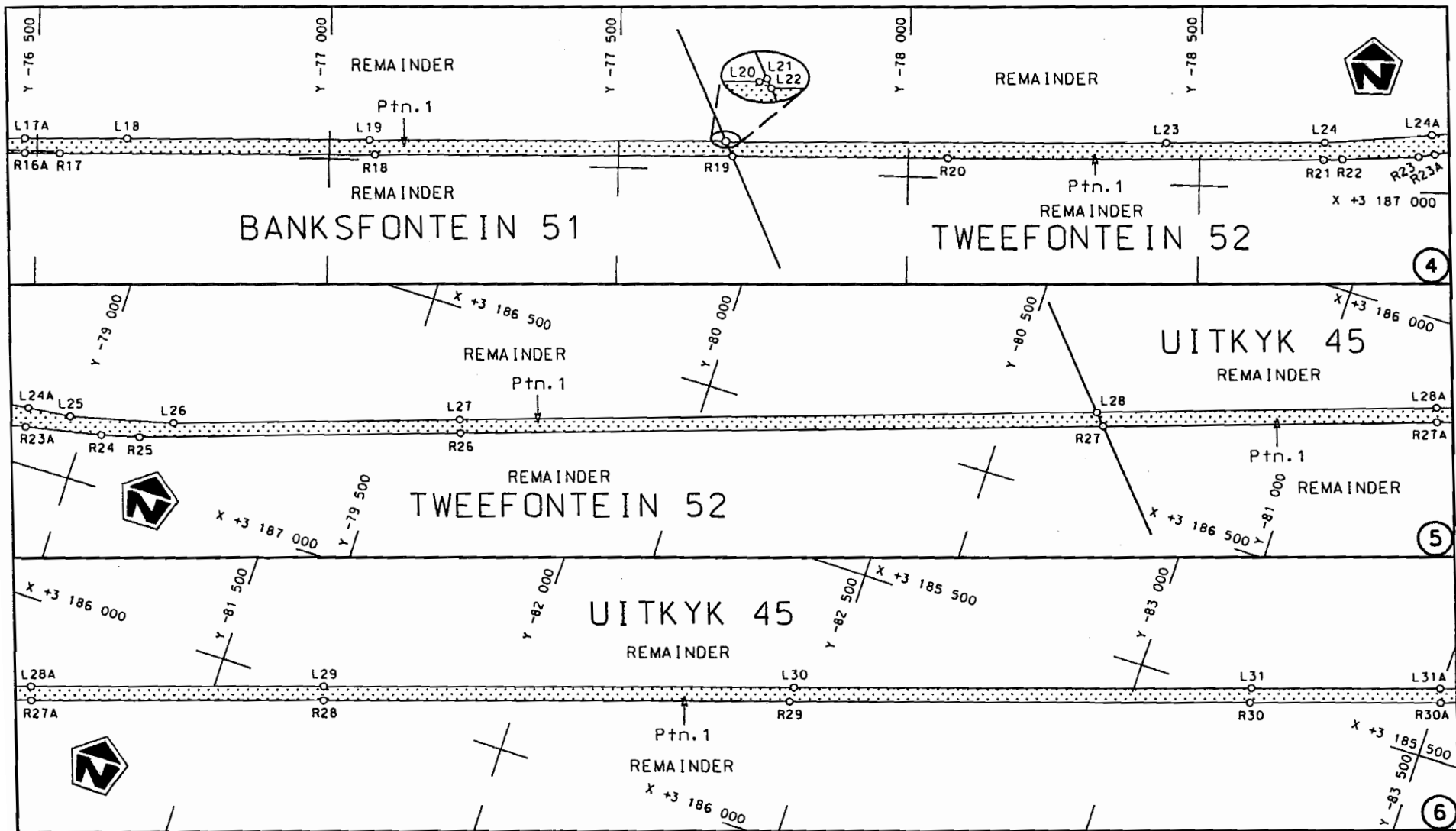
Die Suid Afrikaanse Nasionale Padagentskap Beperk
The South African National Roads Agency Limited

Die figuur getoon
The figure shown



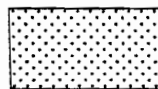
steldie padreserwe voor van 'n gedeelte
represents the road reserve of a portion
van Nasionale Roete N8 Sektie
of National Route 8 Section

Vel
Sheet 1 von
of 19
Plan P663/08



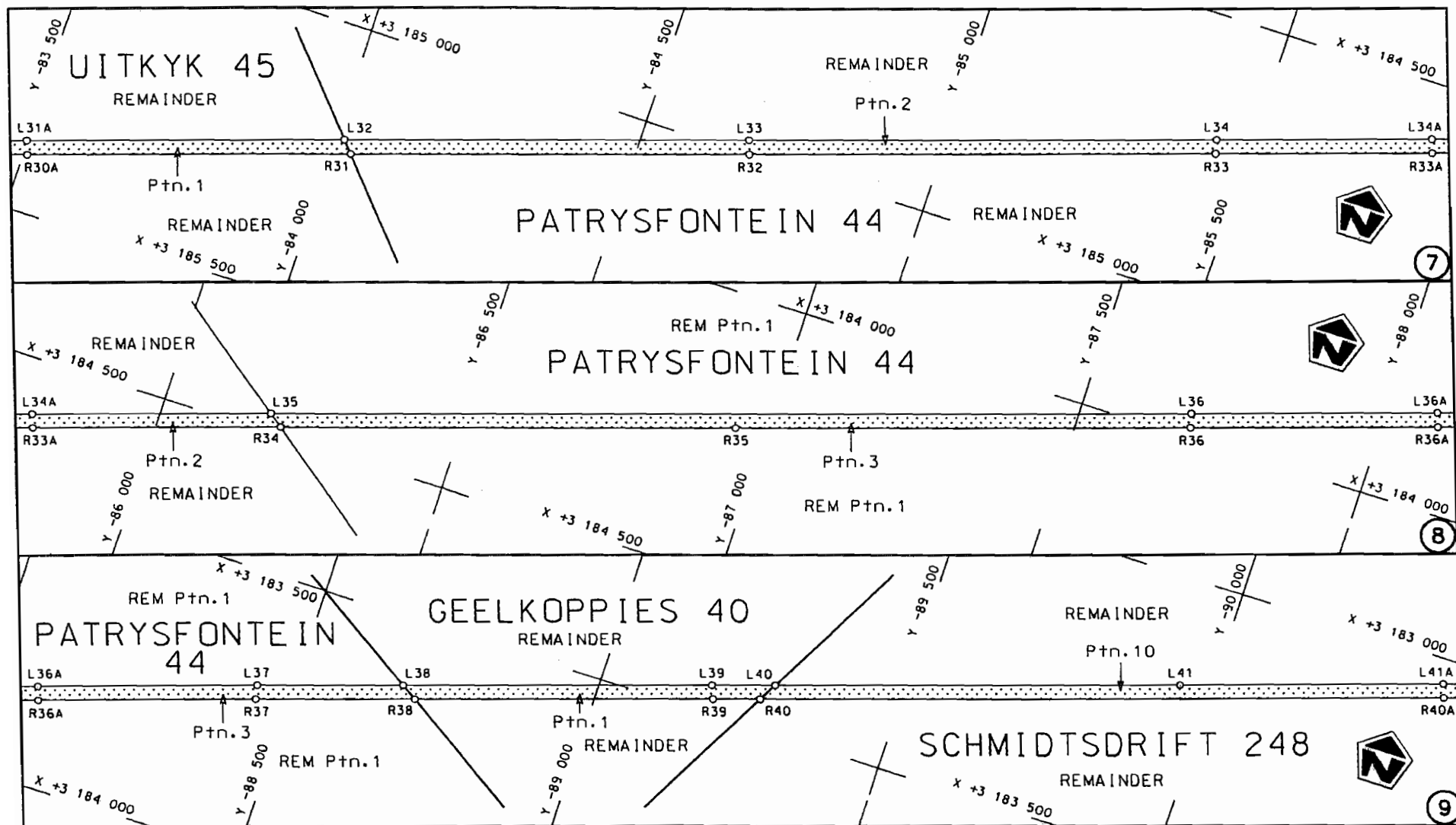
Die Suid Afrikaanse Nasionale Padagentskap Beperk
The South African National Roads Agency Limited

Die figuur getoon
The figure shown



steldie padreserwe voor van 'n gedeelte
represents the road reserve of a portion
van Nasionale Roete of National Route
N8 Seksie Section 8

Vel Sheet 2 van af 19
Plan P663/08



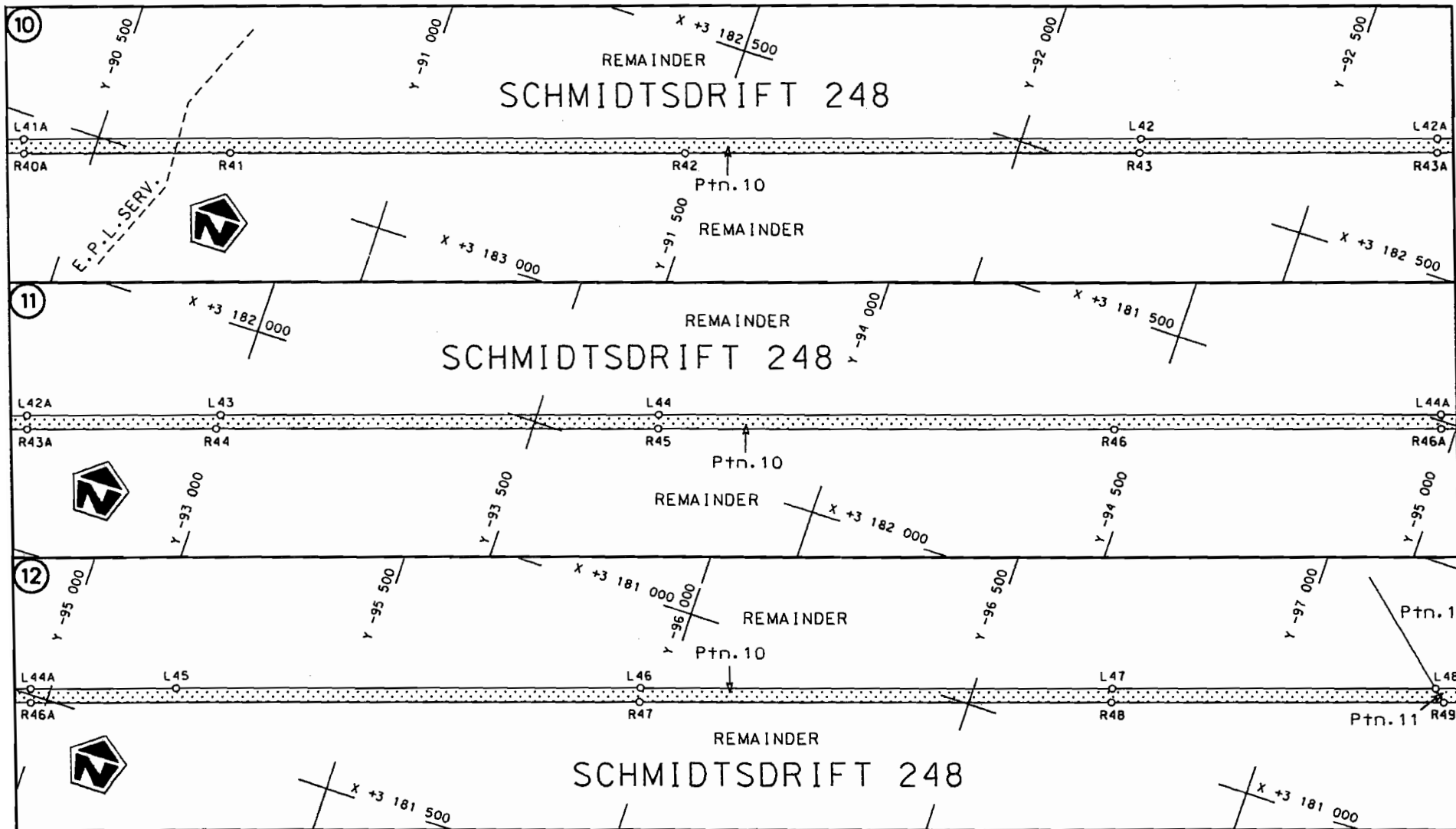
Die Suid Afrikaanse Nasionale Padagentskap Beperk
The South African National Roads Agency Limited

Die figuur getoon
The figure shown



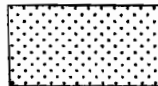
steldie padreserwe voor van 'n gedeelte
represents the road reserve of a portion
van Nasionale Roete N8 Seksie
of National Route of National Route Section

Vel
Sheet 3 van 19
Plan P663/08



Die Suid Afrikaanse Nasionale Padogentskap Beperk
The South African National Roads Agency Limited

Die figuur getoon
The figure shown

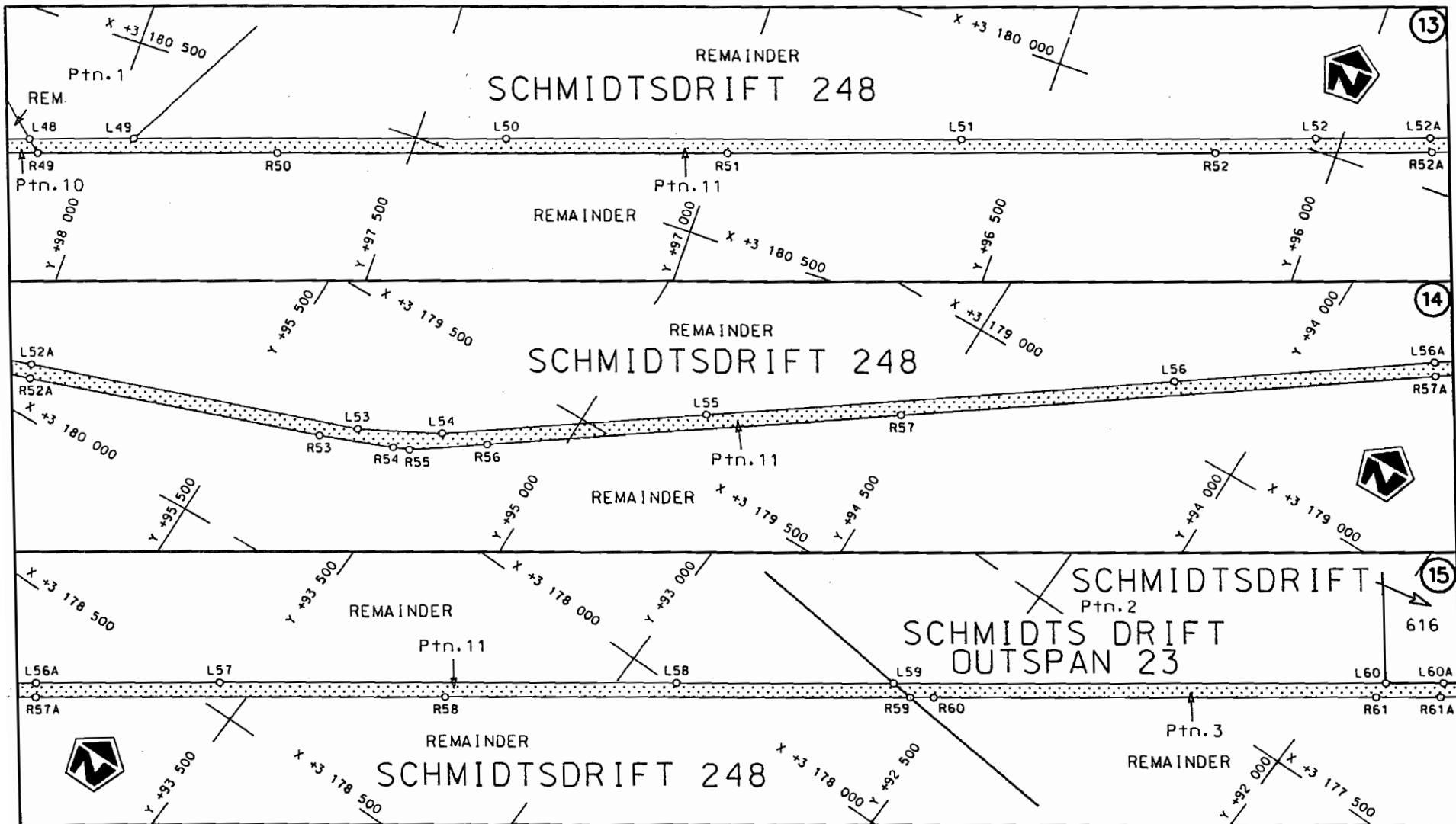


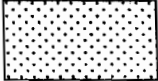
steldie padreserwe voor van 'n gedeelte
represents the road reserve of a portion
van Nasionale Roete N8 Seksie
of National Route Section

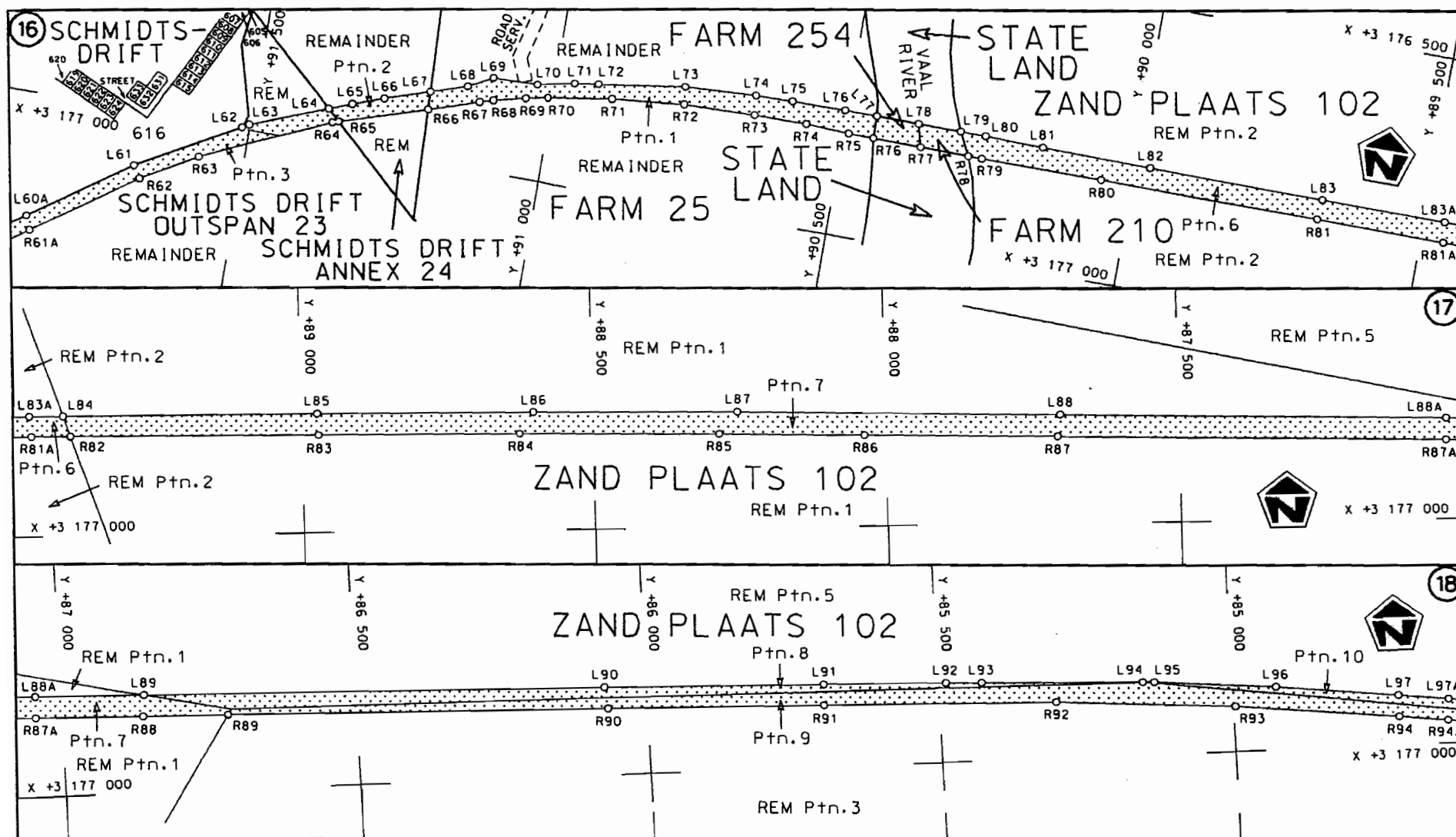
8

Vel
Sheet 4 van 19
of

Plan P663/08



<p>Die Suid Afrikaanse Nasionale Padagentskap Beperk</p> <p>The South African National Roads Agency Limited</p>	<p>Die figuur getoon</p> <p>The figure shown</p> 	<p>steldie padreserwe voor van 'n gedeelte</p> <p>represents the road reserve of a portion</p> <p>van Nasionale Roete of National Route</p> <p>N8</p> <p>Seksie Section</p> <p>8</p>	<p>Vel Sheet 5 van 19</p> <p>Plon P663/08</p>
---	---	--	---



Die Suid Afrikaanse Nasionale Padagentskap Beperk
The South African National Roads Agency Limited

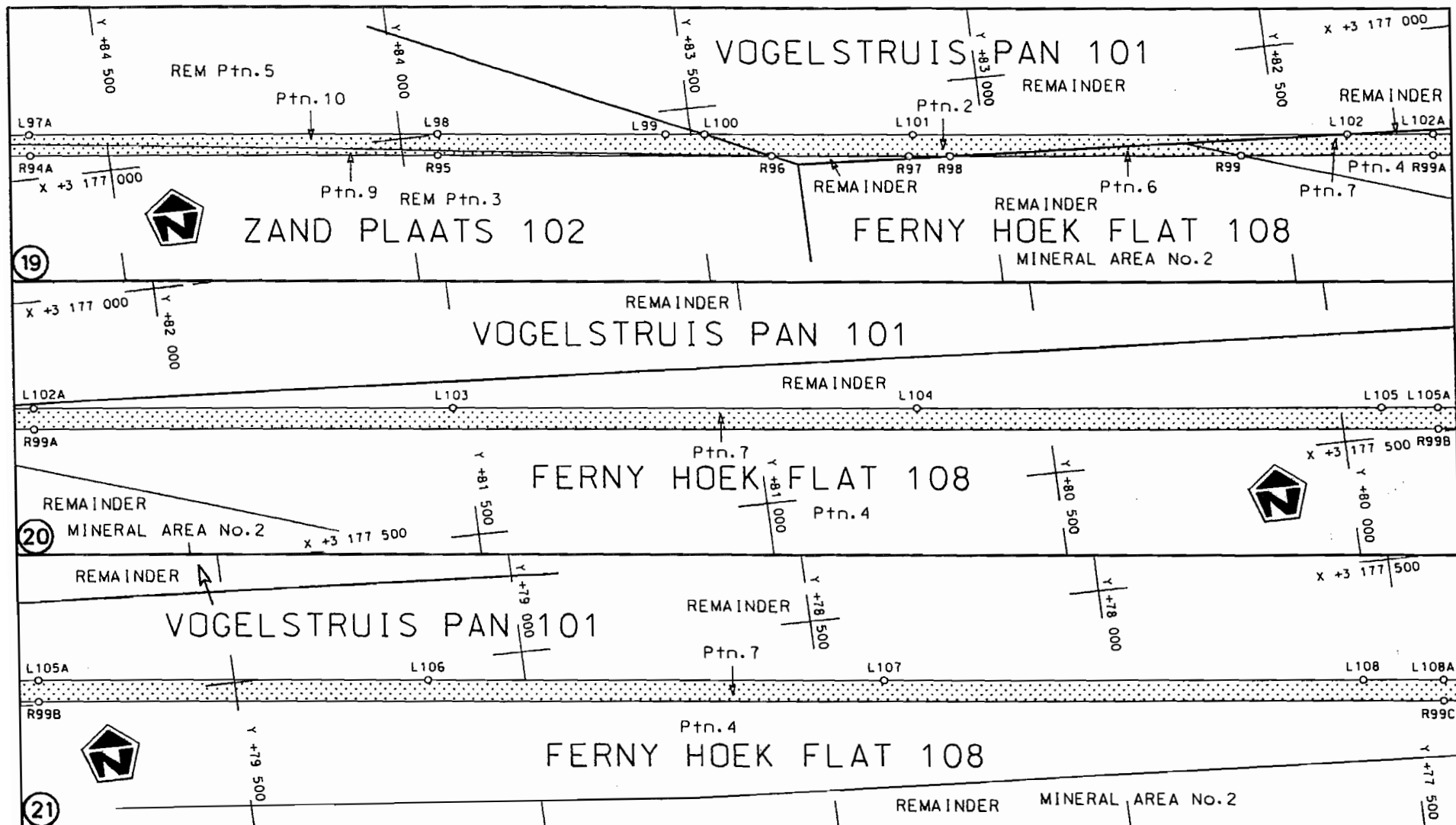
Die figuur getoon

The figure shown



steldie padreserwe voor van 'n gedeelte
represents the road reserve of a portion
van Nasionale Roete N8 Seksie
of National Route Section

Vel Sheet	6	van of	19
Plan	P663/08		



Die Suid Afrikaanse Nasionale Padagentskap Beperk
The South African National Roads Agency Limited

Die figuur getoon
The figure shown



steldie padreserwe voor van 'n gedeelte
represents the road reserve of a portion
van Nasionale Roete of National Route

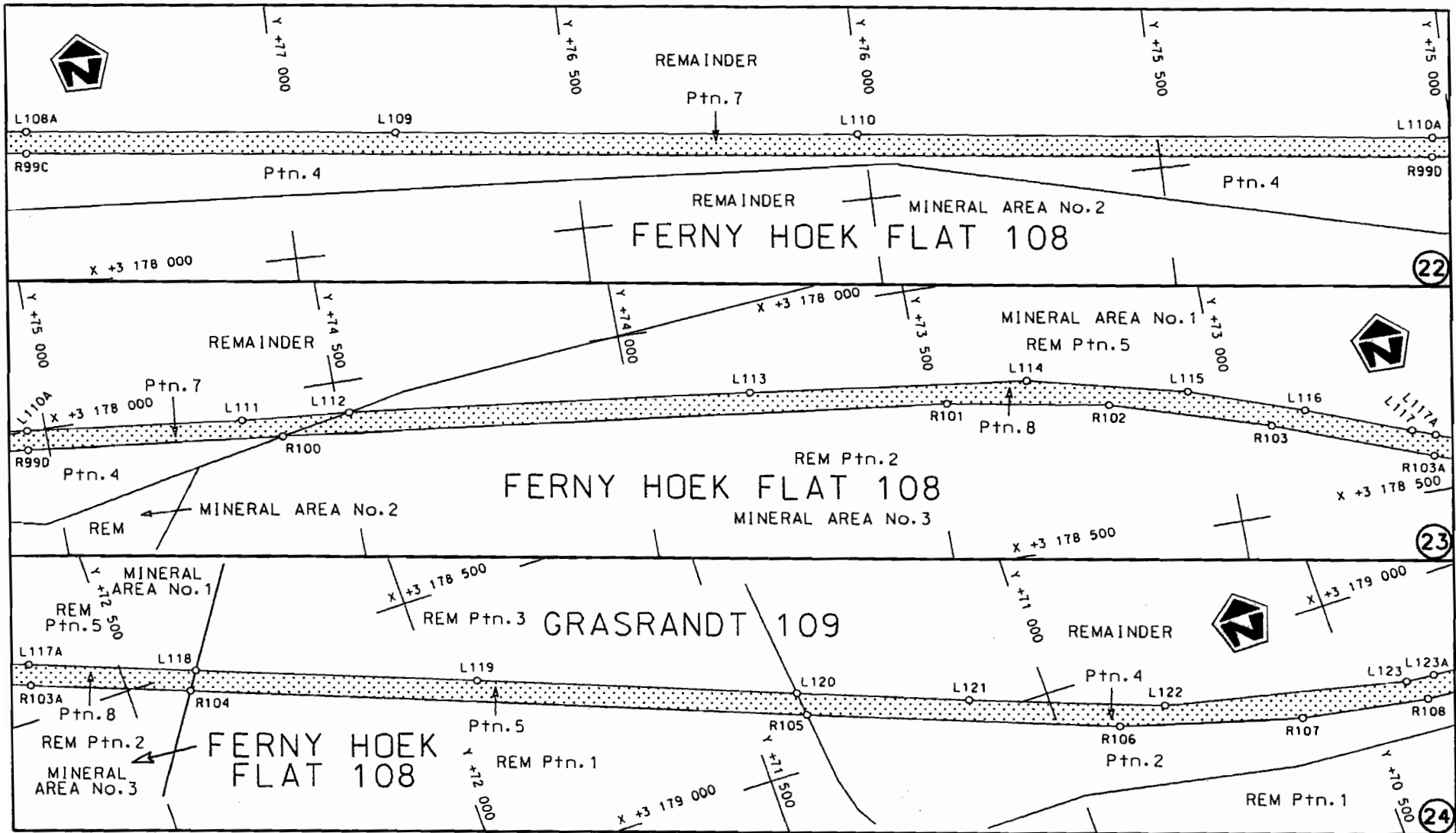
N8

Seksie
Section

8

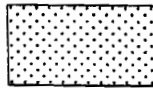
Vel
Sheet 7 van
of 19

Plan P663/08



Die Suid Afrikaanse Nasionale Padagentskap Beperk
The South African National Roads Agency Limited

Die figuur getoon
The figure shown



stel die padreserwe voor van 'n gedeelte
represents the road reserve of a portion
von Nasionale Roete
of National Route

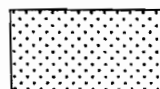
N8

Seksie
Section

8

Vel
Sheet 8 van
of 19

Plan
P663/08



Die figuur getoon

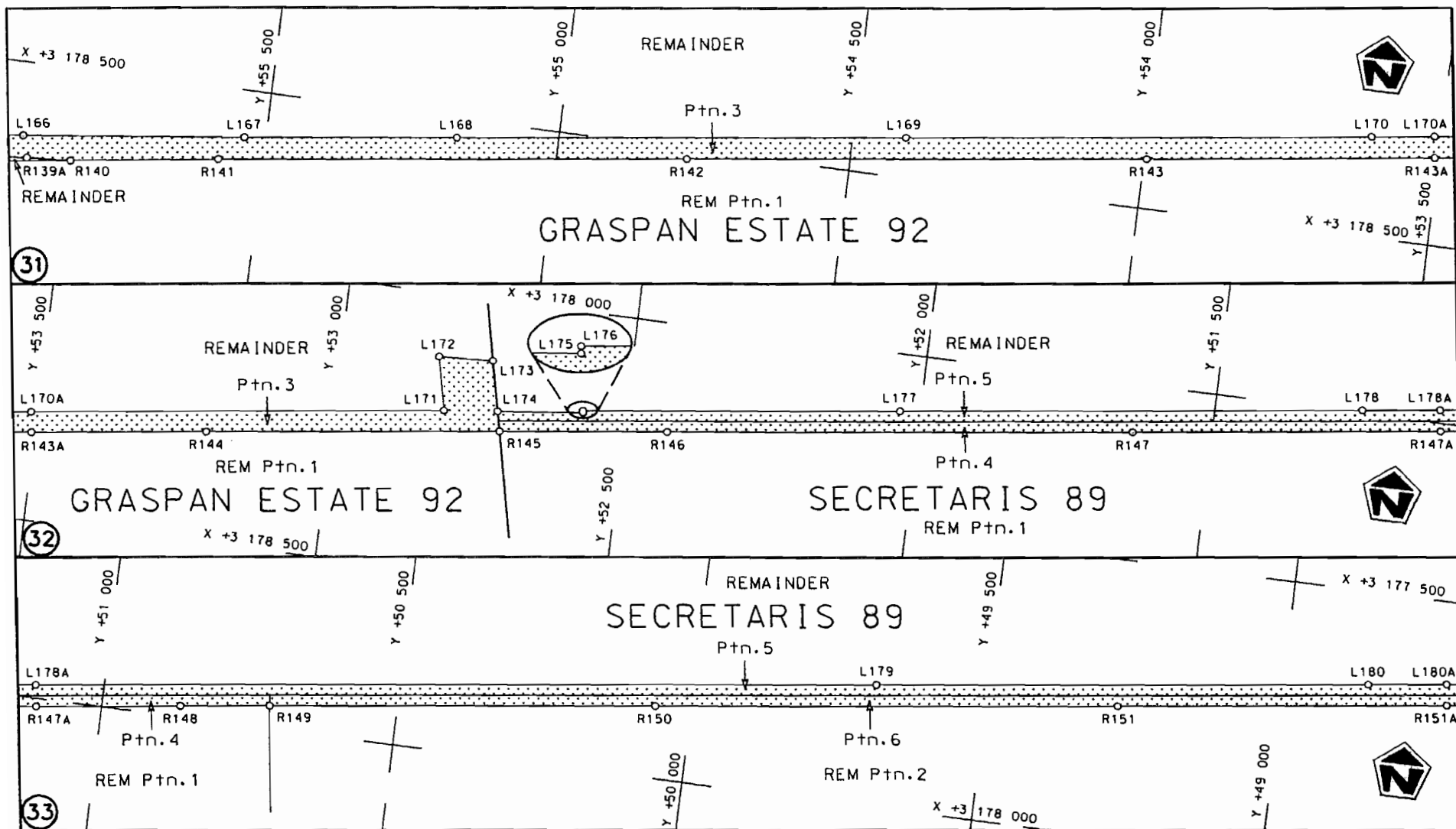
The figure shown

N8

Seksie
Section

3

Plan	P663/08
------	---------



Die Suid Afrikaanse Nasionale Padagentskap Beperk
The South African National Roads Agency Limited

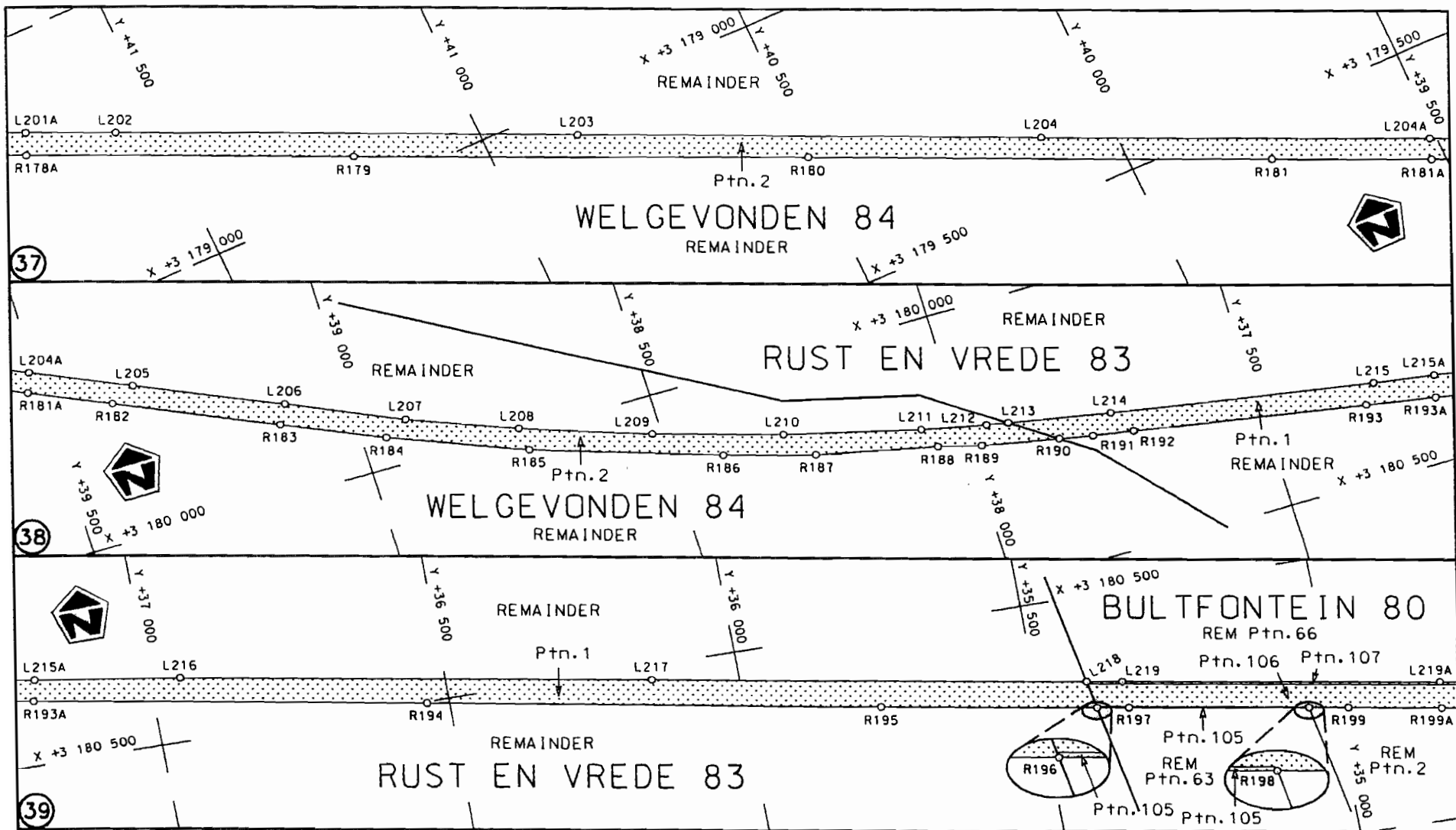
Die figuur getoon
The figure shown



steldie padreserwe voor van 'n gedeelte
represents the road reserve of a portion
van Nasionale Roete N8
of National Route N8
Seksie
Section

8

Vel
Sheet 11 van 19
Plan P663/08



Die Suid Afrikaanse Nasionale Padagentskap Beperk
The South African National Roads Agency Limited

Die figuur getoon
The figure shown



stel die padreserwe voor van 'n gedeelte
represents the road reserve of a portion
van Nasionale Roete
of National Route

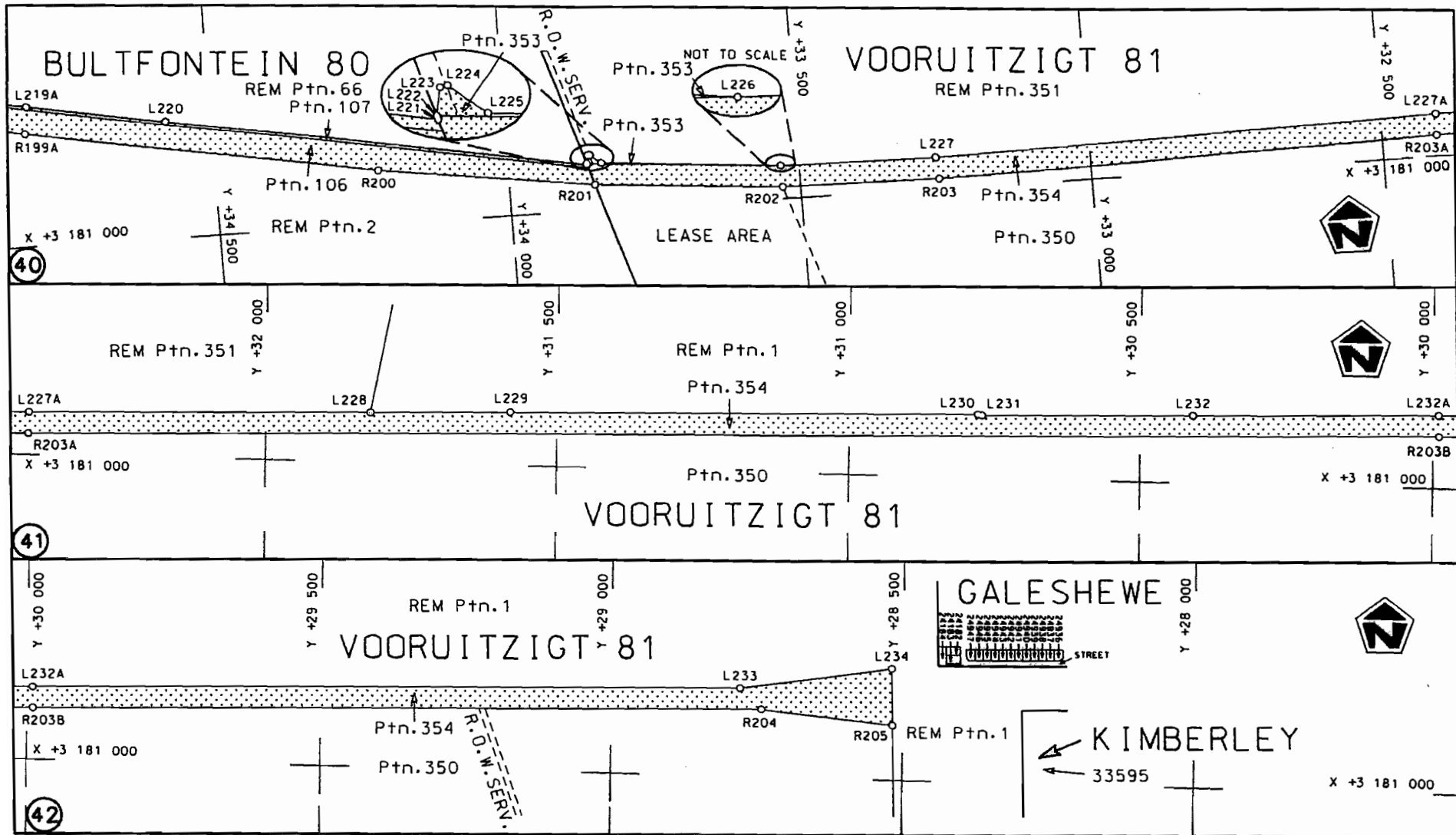
N8


Seksie
Section

8

Vel
Sheet 13 van
of 19

Plan
P663/08



<p>Die Suid Afrikaanse Nasionale Padagentskap Beperk</p> <p>The South African National Roads Agency Limited</p>	<p>Die figuur getoon</p> <p>The figure shown</p> 	<p>steldie padreserwe voor van 'n gedeelte</p> <p>represents the road reserve of a portion</p> <p>van Nasionale Roete of National Route</p> <p>N8</p> <p>Seksie Section</p> <p>8</p>	<p>Vel Sheet 14 van of 19</p> <p>Plan P663/08</p>
---	---	--	---

PADRESERWE KOÖRDINATE				/	ROAD RESERVE CO-ORDINATES			
LINKERKANT/LEFT HAND SIDE					REGTERKANT/RIGHT HAND SIDE			
	Y	X	WG	23°		Y	X	
L1	-70 483.490	3 187 428.220			R1	-70 518.070	3 187 442.780	
L2	-70 931.010	3 187 272.980			R2	-70 938.920	3 187 297.460	
L3	-70 989.970	3 187 254.840			R3	-71 204.490	3 187 214.060	
L4	-71 204.050	3 187 189.090			R4	-71 463.330	3 187 160.860	
L5	-71 222.380	3 187 185.210			R5	-71 483.860	3 187 157.120	
L6	-71 471.350	3 187 133.090			R6	-71 758.290	3 187 125.640	
L7	-71 694.310	3 187 104.250			R7	-71 939.910	3 187 118.110	
L8	-71 860.100	3 187 095.280			R8	-72 551.490	3 187 103.130	
L9	-72 173.910	3 187 086.980			R9	-72 853.190	3 187 095.510	
L10	-72 555.800	3 187 077.820			R10	-73 165.880	3 187 088.400	
L11	-72 858.310	3 187 070.020			R11	-73 516.890	3 187 079.450	
L12	-73 514.160	3 187 053.560			R12	-74 243.590	3 187 059.480	
L13	-74 240.060	3 187 035.690			R13	-74 541.300	3 187 051.840	
L14	-74 549.920	3 187 028.150			R14	-74 782.230	3 187 046.150	
L15	-74 782.010	3 187 022.290			R15	-75 279.260	3 187 034.400	
L16	-75 272.290	3 187 009.890			R16	-76 114.130	3 187 013.770	
L17	-76 113.820	3 186 988.770			R17	-76 538.570	3 187 003.090	
L18	-76 654.000	3 186 974.640			R18	-77 077.810	3 186 990.100	
L19	-77 067.730	3 186 964.780			R19	-77 695.700	3 186 973.280	
L20	-77 682.600	3 186 947.880			R20	-78 067.430	3 186 964.960	
L21	-77 684.080	3 186 947.250			R21	-78 712.730	3 186 948.440	
L22	-77 684.920	3 186 949.140			R22	-78 745.190	3 186 946.620	
L23	-78 442.210	3 186 926.220			R23	-78 876.040	3 186 938.420	
L24	-78 714.550	3 186 917.810			R24	-79 031.530	3 186 908.160	
L25	-78 970.600	3 186 891.770			R25	-79 095.040	3 186 891.700	
L26	-79 142.700	3 186 848.840			R26	-79 616.150	3 186 715.560	
L27	-79 607.280	3 186 691.770			R27	-80 667.280	3 186 359.940	
L28	-80 649.610	3 186 339.090			R28	-81 684.330	3 186 015.700	
L29	-81 677.220	3 185 991.410			R29	-82 447.010	3 185 757.360	
L30	-82 446.430	3 185 730.910			R30	-83 196.790	3 185 504.040	
L31	-83 191.400	3 185 478.750			R31	-84 032.510	3 185 220.670	
L32	-84 014.640	3 185 199.970			R32	-84 685.190	3 184 999.710	
L33	-84 677.190	3 184 975.490			R33	-85 446.460	3 184 741.650	
L34	-85 440.370	3 184 716.990			R34	-86 202.260	3 184 485.240	
L35	-86 178.970	3 184 466.970			R35	-86 946.650	3 184 233.580	
L36	-87 682.850	3 183 957.290			R36	-87 688.650	3 183 981.980	
L37	-88 440.590	3 183 700.310			R37	-88 445.680	3 183 725.370	
L38	-88 678.580	3 183 619.820			R38	-88 705.430	3 183 637.520	
L39	-89 183.560	3 183 449.040			R39	-89 192.970	3 183 472.640	
L40	-89 286.840	3 183 414.060			R40	-89 270.000	3 183 446.530	
L41	-89 947.160	3 183 190.390			R41	-90 720.660	3 182 954.990	
L42	-92 192.630	3 182 429.330			R42	-91 460.490	3 182 704.130	
L43	-92 986.080	3 182 160.530			R43	-92 198.470	3 182 454.050	
L44	-93 698.860	3 181 919.100			R44	-92 987.070	3 182 187.020	
L45	-95 203.720	3 181 409.650			R45	-93 705.620	3 181 943.470	
L46	-95 957.740	3 181 154.130			R46	-94 446.550	3 181 692.680	
L47	-96 724.150	3 180 894.610			R47	-95 963.930	3 181 178.800	
L48	-97 246.860	3 180 717.710			R48	-96 730.610	3 180 918.990	
					R49	-97 268.240	3 180 737.260	
					Vel 15 Van 19 Sheet of			
					P663/08			

PADRESERWE KOÖRDINATE				/	ROAD RESERVE CO-ORDINATES			
LINKERKANT/LEFT HAND SIDE					REGTERKANT/RIGHT HAND SIDE			
	Y	X	WG	25°		Y	X	
L48	98 124.370	3 180 725.070			R49	98 102.660	3 180 744.260	
L49	97 956.210	3 180 664.950			R50	97 717.290	3 180 606.650	
L50	97 353.420	3 180 448.950			R51	96 986.150	3 180 344.100	
L51	96 614.820	3 180 184.240			R52	96 195.360	3 180 060.610	
L52	96 042.540	3 179 978.900			R53	95 371.070	3 179 764.780	
L53	95 320.490	3 179 719.870			R54	95 251.320	3 179 715.790	
L54	95 193.200	3 179 650.260			R55	95 225.600	3 179 704.880	
L55	94 822.340	3 179 380.370			R56	95 116.570	3 179 626.020	
L56	94 168.240	3 178 904.290			R57	94 536.550	3 179 203.850	
L57	93 552.110	3 178 456.090			R58	93 224.260	3 178 248.930	
L58	92 915.620	3 177 992.890			R59	92 574.910	3 177 776.210	
L59	92 612.090	3 177 772.150			R60	92 542.380	3 177 752.530	
L60	91 930.410	3 177 275.660			R61	91 929.280	3 177 306.450	
L61	91 682.870	3 177 095.750			R62	91 669.890	3 177 117.430	
L62	91 513.390	3 176 997.210			R63	91 577.460	3 177 061.530	
L63	91 501.620	3 176 990.470			R64	91 363.890	3 176 961.140	
L64	91 374.050	3 176 938.570			R65	91 353.840	3 176 957.770	
L65	91 336.490	3 176 923.280			R66	91 207.750	3 176 908.760	
L66	91 284.670	3 176 903.970			R67	91 122.850	3 176 880.270	
L67	91 209.110	3 176 878.000			R68	91 100.330	3 176 873.300	
L68	91 147.580	3 176 856.850			R69	91 045.960	3 176 859.460	
L69	91 107.100	3 176 833.870			R70	91 007.010	3 176 851.210	
L70	91 030.260	3 176 831.750			R71	90 898.910	3 176 833.000	
L71	90 966.240	3 176 817.810			R72	90 777.360	3 176 819.780	
L72	90 926.010	3 176 811.310			R73	90 655.550	3 176 816.290	
L73	90 780.660	3 176 789.410			R74	90 565.950	3 176 815.080	
L74	90 658.770	3 176 782.400			R75	90 491.310	3 176 818.080	
L75	90 595.290	3 176 780.220			R76	90 447.990	3 176 818.444	
L76	90 503.960	3 176 779.240			R77	90 365.217	3 176 819.140	
L77	90 448.547	3 176 779.260			R78	90 282.563	3 176 819.834	
L78	90 375.516	3 176 779.287			R79	90 259.280	3 176 820.030	
L79	90 302.562	3 176 779.314			R80	90 053.160	3 176 819.610	
L80	90 259.850	3 176 779.330			R81	89 679.880	3 176 821.550	
L81	90 160.470	3 176 781.150			R82	89 393.700	3 176 823.380	
L82	89 974.330	3 176 783.950			R83	88 972.170	3 176 826.970	
L83	89 676.800	3 176 785.920			R84	88 628.430	3 176 828.800	
L84	89 405.790	3 176 787.140			R85	88 286.610	3 176 833.170	
L85	88 974.010	3 176 789.070			R86	88 037.040	3 176 838.230	
L86	88 604.310	3 176 791.520			R87	87 706.910	3 176 844.980	
L87	88 254.800	3 176 794.980			R88	86 862.160	3 176 864.460	
L88	87 701.910	3 176 807.400			R89	86 717.810	3 176 867.750	
L89	86 859.140	3 176 826.500			R90	86 066.680	3 176 882.600	
L90	86 071.170	3 176 844.380			R91	85 698.810	3 176 890.660	
L91	85 697.500	3 176 853.500			R92	85 301.290	3 176 900.270	
L92	85 487.350	3 176 859.160			R93	84 996.520	3 176 919.850	
L93	85 426.230	3 176 860.890			R94	84 718.270	3 176 949.320	
L94	85 152.200	3 176 870.770			R95	83 939.580	3 177 036.310	
L95	85 132.720	3 176 871.430			R96	83 366.280	3 177 100.430	
L96	84 926.590	3 176 888.330			R97	83 132.600	3 177 126.810	
L97	84 717.550	3 176 911.160			R98	83 062.250	3 177 134.660	
L98	83 935.310	3 176 998.660			R99	82 563.970	3 177 190.160	
					Vel	16	Van	19
					Sheet		of	P663/08

PADRESERWE KOÖRDINATE				/	ROAD RESERVE CO-ORDINATES			
LINKERKANT/LEFT HAND SIDE					REGTERKANT/RIGHT HAND SIDE			
	Y	X	WG	25°		Y	X	
L99	83 543.050	3 177 042.170			R100	74 600.880	3 178 081.080	
L100	83 476.730	3 177 049.650			R101	73 461.990	3 178 209.130	
L101	83 121.330	3 177 089.750			R102	73 187.680	3 178 256.990	
L102	82 379.320	3 177 172.890			R103	72 919.000	3 178 339.040	
L103	81 517.260	3 177 269.230			R104	72 396.730	3 178 534.030	
L104	80 723.060	3 177 358.060			R105	71 402.850	3 178 906.310	
L105	79 929.980	3 177 446.540			R106	70 900.210	3 179 094.560	
L106	79 169.050	3 177 531.930			R107	70 597.660	3 179 179.430	
L107	78 387.740	3 177 619.430			R108	70 383.190	3 179 213.500	
L108	77 570.010	3 177 710.760			R109	70 185.980	3 179 226.990	
L109	76 803.600	3 177 796.450			R110	69 912.330	3 179 217.490	
L110	76 010.200	3 177 885.550			R111	69 096.360	3 179 154.130	
L111	74 662.800	3 178 040.830			R112	68 608.730	3 179 115.960	
L112	74 482.260	3 178 056.580			R113	68 451.900	3 179 103.690	
L113	73 791.280	3 178 134.040			R114	68 006.060	3 179 069.220	
L114	73 319.320	3 178 190.920			R115	67 632.760	3 179 039.890	
L115	73 050.430	3 178 254.670			R116	66 870.520	3 178 980.880	
L116	72 857.270	3 178 321.500			R117	65 274.990	3 178 856.180	
L117	72 683.940	3 178 386.450			R118	64 485.050	3 178 794.270	
L118	72 375.630	3 178 501.880			R119	63 646.020	3 178 728.360	
L119	71 924.980	3 178 670.600			R120	63 033.810	3 178 680.590	
L120	71 406.720	3 178 865.100			R121	62 496.480	3 178 638.650	
L121	71 130.830	3 178 968.630			R122	61 700.280	3 178 576.690	
L122	70 815.070	3 179 083.210			R123	61 026.650	3 178 523.810	
L123	70 407.580	3 179 172.810			R124	61 006.600	3 178 522.290	
L124	70 216.170	3 179 186.550			R125	60 705.020	3 178 499.320	
L125	70 002.900	3 179 186.230			R126	60 490.100	3 178 488.670	
L126	69 652.830	3 179 159.380			R127	60 245.050	3 178 485.680	
L127	69 221.010	3 179 125.580			R128	60 205.630	3 178 487.370	
L128	69 090.600	3 179 115.470			R129	59 790.890	3 178 505.130	
L129	68 474.710	3 179 067.720			R130	59 125.680	3 178 546.150	
L130	67 994.300	3 179 029.910			R131	58 331.320	3 178 595.460	
L131	67 643.080	3 179 002.790			R132	57 556.580	3 178 642.930	
L132	67 258.810	3 178 963.740			R133	57 150.870	3 178 667.940	
L133	66 459.030	3 178 901.820			R134	57 089.310	3 178 671.590	
L134	65 662.540	3 178 840.420			R135	57 062.650	3 178 673.170	
L135	64 884.520	3 178 780.750			R136	56 785.210	3 178 689.590	
L136	64 097.600	3 178 720.360			R137	56 462.000	3 178 695.480	
L137	63 291.350	3 178 658.630			R138	56 284.180	3 178 694.280	
L138	63 044.350	3 178 643.550			R139	56 073.890	3 178 681.560	
L139	63 044.500	3 178 642.950			R140	55 825.000	3 178 663.290	
L140	63 050.870	3 178 640.110			R141	55 576.000	3 178 628.030	
L141	63 045.570	3 178 639.670			R142	54 778.090	3 178 517.710	
L142	63 044.450	3 178 639.130			R143	53 995.460	3 178 410.320	
L143	63 040.560	3 178 638.280			R144	53 210.950	3 178 302.410	
L144	63 038.220	3 178 643.100			R145	52 712.010	3 178 233.700	
L145	62 110.700	3 178 570.730			R146	52 426.450	3 178 195.120	
L146	61 328.680	3 178 509.490			R147	51 634.860	3 178 086.490	
L147	61 022.550	3 178 486.160			R148	50 868.140	3 177 980.970	
L148	61 015.740	3 178 485.090			R149	50 718.000	3 177 960.380	
L149	61 013.230	3 178 484.960			R150	50 060.810	3 177 870.250	
					Vel	17	Van	19
					Sheet		of	P663/08

PADRESERWE KOÖRDINATE				/	ROAD RESERVE CO-ORDINATES			
LINKERKANT/LEFT HAND SIDE					REGTERKANT/RIGHT HAND SIDE			
	Y	X	WG	25°		Y	X	
L150	60 705.470	3 178 461.310			R151	49 274.620	3 177 762.120	
L151	60 491.590	3 178 450.800			R152	48 613.050	3 177 671.350	
L152	60 247.180	3 178 447.880			R153	48 482.370	3 177 653.420	
L153	59 799.610	3 178 467.040			R154	47 714.160	3 177 548.230	
L154	59 195.130	3 178 504.040			R155	47 279.290	3 177 487.960	
L155	59 115.640	3 178 508.900			R156	46 928.340	3 177 440.540	
L156	58 261.760	3 178 561.650			R157	46 472.220	3 177 395.400	
L157	58 260.120	3 178 563.210			R158	45 974.270	3 177 394.860	
L158	58 256.100	3 178 561.250			R159	45 549.990	3 177 434.780	
L159	58 255.260	3 178 562.180			R160	45 324.190	3 177 471.000	
L160	57 514.360	3 178 607.810			R161	45 178.470	3 177 500.970	
L161	57 090.930	3 178 633.940			R162	44 948.040	3 177 559.500	
L162	56 872.810	3 178 647.400			R163	44 278.720	3 177 729.250	
L163	56 626.360	3 178 657.500			R164	44 226.120	3 177 742.590	
L164	56 391.810	3 178 657.900			R165	44 224.580	3 177 741.700	
L165	56 140.720	3 178 648.440			R166	44 220.140	3 177 744.160	
L166	55 910.410	3 178 629.970			R167	44 142.160	3 177 764.190	
L167	55 536.280	3 178 583.880			R168	44 035.370	3 177 791.620	
L168	55 174.470	3 178 534.310			R169	43 907.620	3 177 824.440	
L169	54 409.040	3 178 429.300			R170	43 731.120	3 177 869.770	
L170	53 618.240	3 178 320.610			R171	43 557.260	3 177 918.350	
L171	52 812.170	3 178 209.560			R172	43 383.680	3 177 974.810	
L172	52 831.910	3 178 113.830			R173	43 241.420	3 178 027.960	
L173	52 737.830	3 178 108.920			R174	43 191.960	3 178 055.200	
L174	52 719.350	3 178 198.210			R175	43 044.730	3 178 110.340	
L175	52 573.280	3 178 180.840			R176	42 738.010	3 178 247.120	
L176	52 573.760	3 178 177.100			R177	42 312.400	3 178 443.310	
L177	52 034.270	3 178 103.070			R178	41 963.210	3 178 598.980	
L178	51 249.770	3 177 995.210			R179	41 217.190	3 178 936.480	
L179	49 688.530	3 177 780.810			R180	40 499.750	3 179 254.830	
L180	48 854.510	3 177 666.500			R181	39 774.550	3 179 581.190	
L181	48 486.750	3 177 615.920			R182	39 389.420	3 179 754.430	
L182	46 932.700	3 177 402.960			R183	39 125.670	3 179 871.410	
L183	46 477.230	3 177 357.580			R184	38 958.360	3 179 945.480	
L184	45 972.360	3 177 356.980			R185	38 726.970	3 180 035.290	
L185	45 546.260	3 177 397.180			R186	38 410.060	3 180 138.490	
L186	45 318.240	3 177 433.860			R187	38 255.810	3 180 182.850	
L187	45 251.720	3 177 433.460			R188	38 050.920	3 180 227.310	
L188	45 220.010	3 177 420.080			R189	37 978.060	3 180 246.850	
L189	45 212.270	3 177 452.520			R190	37 845.360	3 180 272.700	
L190	44 549.750	3 177 622.330			R191	37 788.420	3 180 283.790	
L191	44 234.100	3 177 702.010			R192	37 719.310	3 180 295.250	
L192	44 179.800	3 177 715.720			R193	37 323.020	3 180 363.750	
L193	44 131.230	3 177 728.190			R194	36 539.160	3 180 502.030	
L194	44 051.590	3 177 746.980			R195	35 769.250	3 180 638.830	
L195	43 954.850	3 177 773.490			R196	35 402.670	3 180 702.240	
L196	43 721.460	3 177 833.440			R197	35 349.130	3 180 711.500	
L197	43 545.730	3 177 882.290			R198	35 045.490	3 180 763.120	
L198	43 371.400	3 177 939.170			R199	34 978.830	3 180 774.450	
L199	43 199.170	3 178 003.600			R200	34 224.200	3 180 905.310	
L200	43 030.360	3 178 075.530			R201	33 851.650	3 180 955.050	
					Vel	18	Van	19
					Sheet		of	P663/08

PADRESERWE KOÖRDINATE				/	ROAD RESERVE CO-ORDINATES			
LINKERKANT/LEFT HAND SIDE					REGTERKANT/RIGHT HAND SIDE			
	Y	X	WG	25°		Y	X	
L201	42 305.160	3 178 401.720			R202	33 530.910	3 180 979.170	
L202	41 571.290	3 178 731.920			R203	33 261.340	3 180 982.680	
L203	40 846.760	3 179 057.650			R204	28 742.100	3 180 878.560	
L204	40 118.940	3 179 385.630			R205	28 517.430	3 180 901.300	
L205	39 346.570	3 179 733.190						
L206	39 107.270	3 179 838.650						
L207	38 916.340	3 179 922.710						
L208	38 732.660	3 179 993.560						
L209	38 516.560	3 180 067.900						
L210	38 298.580	3 180 132.440						
L211	38 069.460	3 180 190.310						
L212	37 959.050	3 180 213.360						
L213	37 922.010	3 180 220.240						
L214	37 746.680	3 180 252.800						
L215	37 299.540	3 180 330.180						
L216	36 947.780	3 180 385.720						
L217	36 149.950	3 180 525.700						
L218	35 411.760	3 180 653.020						
L219	35 351.620	3 180 663.390						
L220	34 576.650	3 180 796.510						
L221	33 862.950	3 180 918.590						
L222	33 863.450	3 180 916.970						
L223	33 860.750	3 180 902.920						
L224	33 856.990	3 180 902.160						
L225	33 838.230	3 180 917.120						
L226	33 531.420	3 180 941.100						
L227	33 264.870	3 180 944.880						
L228	31 824.030	3 180 912.030						
L229	31 582.050	3 180 905.290						
L230	30 778.970	3 180 887.210						
L231	30 771.630	3 180 887.970						
L232	30 409.840	3 180 880.040						
L233	28 779.360	3 180 841.870						
L234	28 519.600	3 180 800.240						