

---

**GOVERNMENT NOTICE  
GOEWERMENSKENNISGEWING**

---

**DEPARTMENT OF TRANSPORT  
DEPARTEMENT VAN VERVOER**

**No. 266**

**7 March 2008**

**THE SOUTH AFRICAN NATIONAL ROADS  
AGENCY LIMITED**  
Registration No: 98/09584/06

**DECLARATION AMENDMENT OF NATIONAL ROAD N2 SECTION 2**

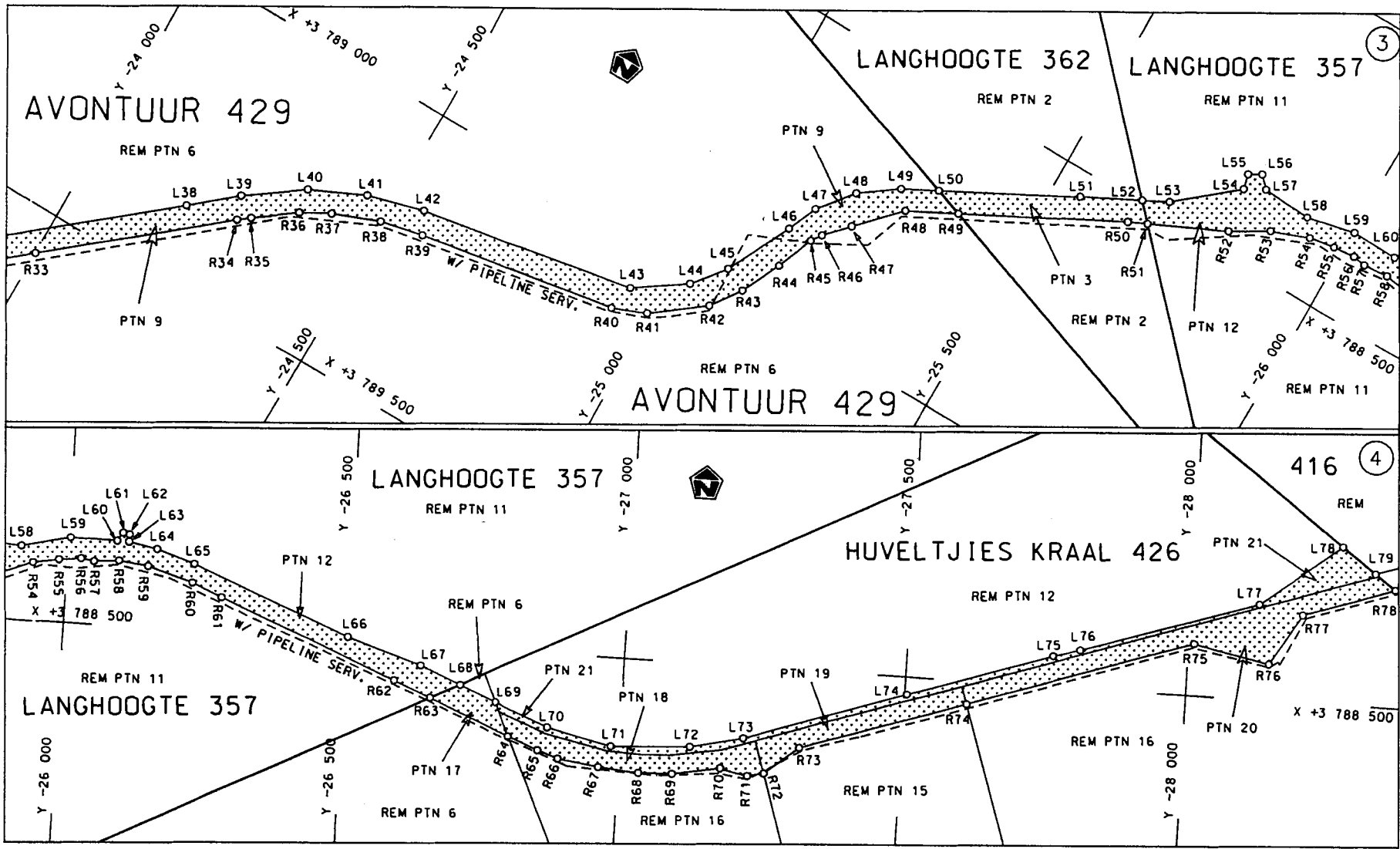
AMENDMENT OF DECLARATION NO. 543 OF 2003

By virtue of section 40 (1)(b) of the South African National Roads Agency Limited and the National Roads Act, 1998 (Act No. 7 of 1998), I hereby amend Declaration No. 543 of 2003 by substituting the section of the descriptive declaration from Bot River up to Caledon, with the subjoined sheets 1 to 10 of Plan No. P609/06.

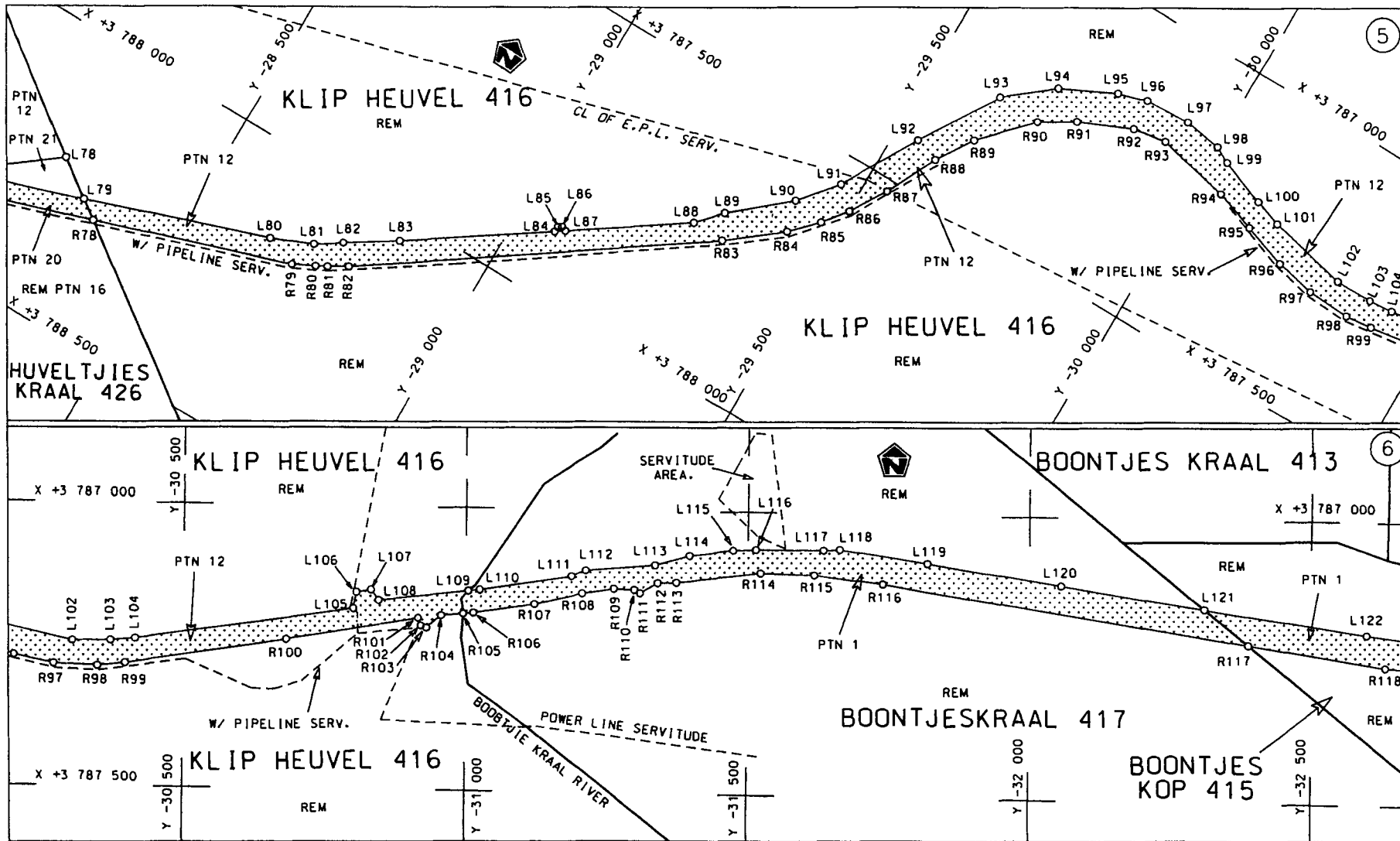
**[National Road N2 Section 2: Bot River – Caledon ( 22km)]**

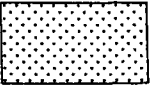
  
\_\_\_\_\_  
MINISTER OF TRANSPORT

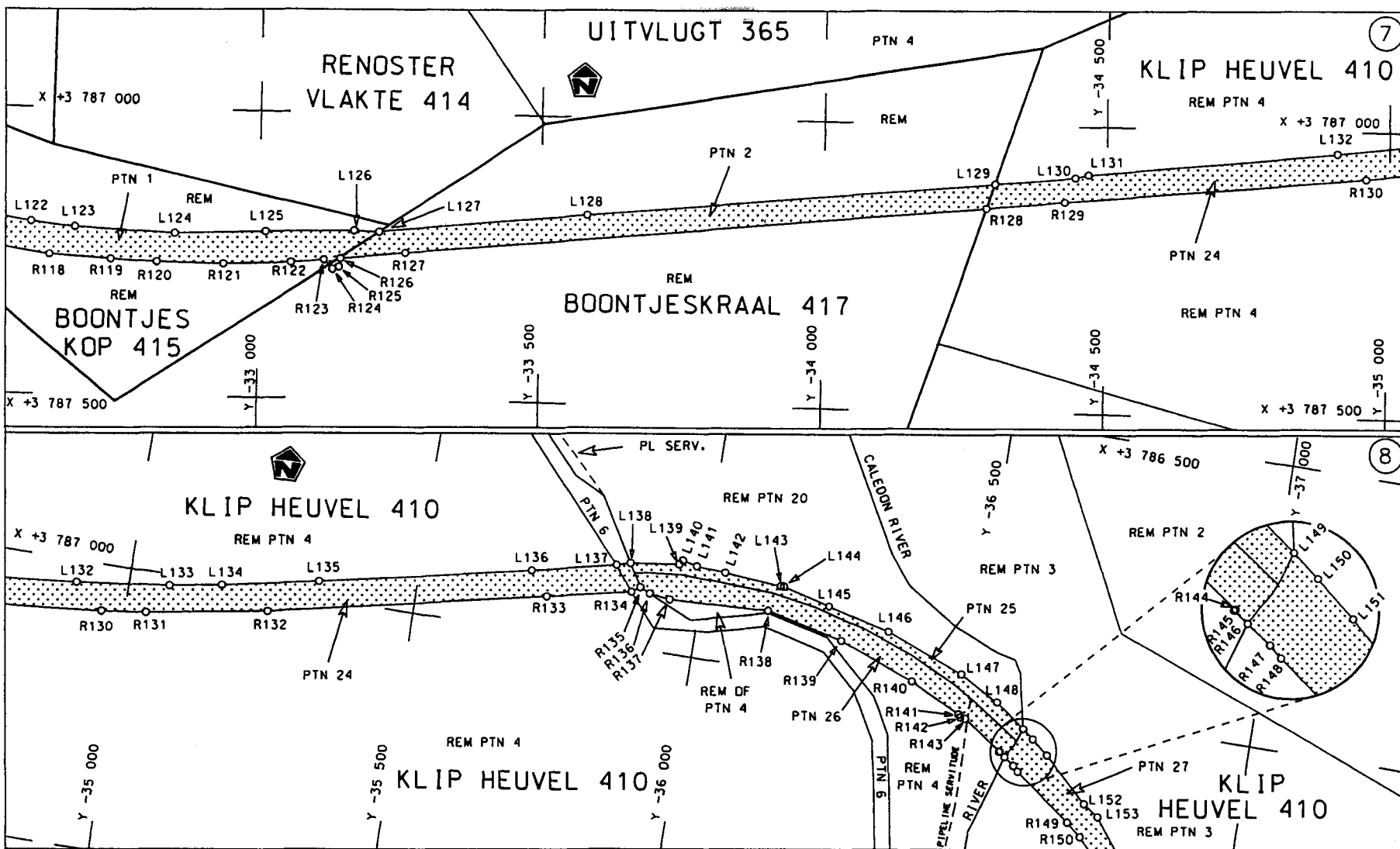


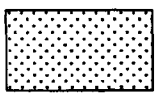


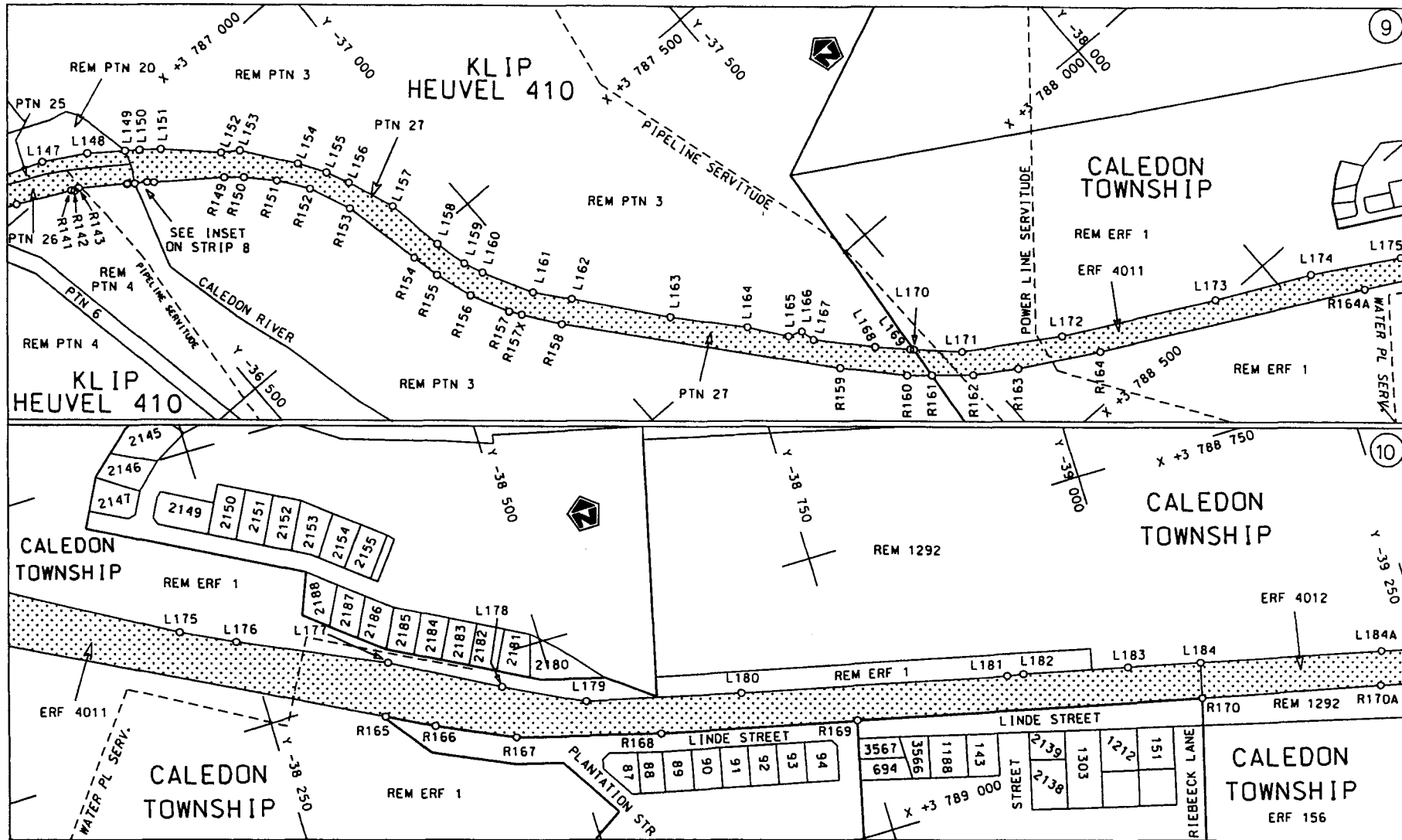
<p>Die Suid Afrikaanse Nasionale Padagentskap Beperk The South African National Roads Agency Limited</p>	<p>Die figuur getoon The figure shown</p>		<p>steldie padreserwe voor van 'n gedeelte represents the road reserve of a portion van Nasionale Roete N2 of National Route N2</p> <p>Seksie 2 Section 2</p>	<p>Vel Sheet 2 van 10 of 10</p>
				<p>Plan P609/06</p>



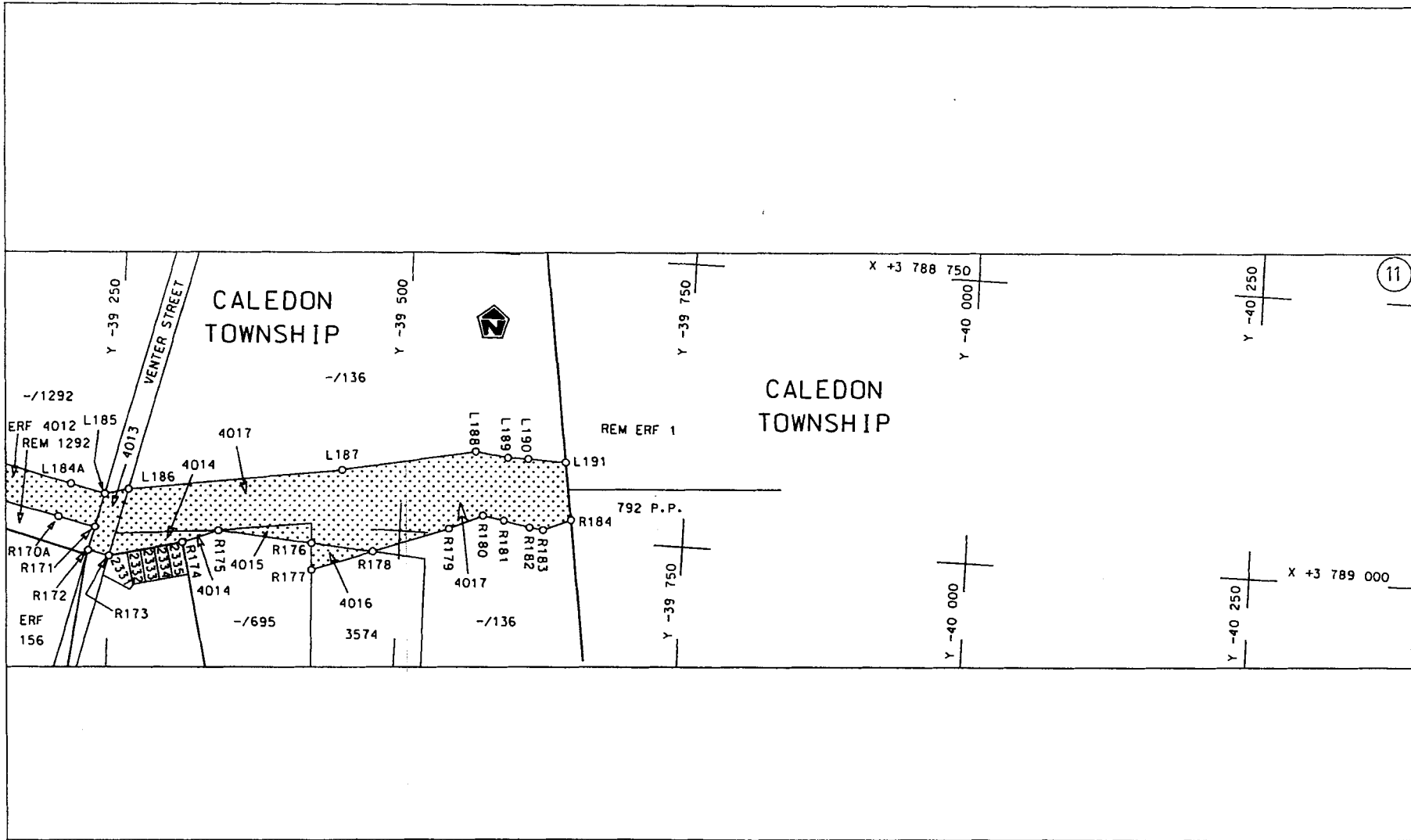
Die Suid Afrikaanse Nasionale Padagentskap Beperk The South African National Roads Agency Limited	Die figuur getoon The figure shown	 steldie padreserwe voor van 'n gedeelte represents the road reserve of a portion van Nasionale Roete N2 of National Route N2 Sektie 2 Section 2	Vel Sheet 3 van 10 Plan P609/06
--	---------------------------------------	---	------------------------------------

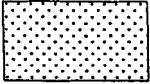


<p>Die Suid Afrikaanse Nasionale Padagentskap Beperk The South African National Roads Agency Limited</p>	<p>Die figuur getoon The figure shown</p>		<p>steldie padreserwe voor van 'n gedeelte represents the road reserve of a portion van Nasionale Roete of National Route</p> <p>N2      Seksie      2 Section</p>	<p>Vel Sheet 4 van 10 of of</p> <p>Plan P609/06</p>
--	---	--	--	---



<p>Die Suid Afrikaanse Nasionale Padagentskap Beperk The South African National Roads Agency Limited</p>	<p>Die figuur getoon The figure shown</p>		<p>steldie padreserwe voor van 'n gedeelte represents the road reserve of a portion van Nasionale Roete of National Route</p> <p>N2      Seksie Section</p> <p>2</p>	<p>Vel Sheet 5 of 10</p> <p>Plan P609/06</p>
--	---	--	--	--



<p>Die Suid Afrikaanse Nasionale Padagentskap Beperk The South African National Roads Agency Limited</p>	<p>Die figuur getoon The figure shown</p>		<p>steldie padreserwe voor van 'n gedeelte represents the road reserve of a portion van Nasionale Roete N2      Seksie of National Route                      Section</p> <p style="text-align: right;">2</p>	<p>Vel van Sheet 6 of 10 Plan P609/06</p>
--	---	--	---	---

PADRESERWE KOÖRDINATE / ROAD RESERVE CO-ORDINATES						
LINKERKANT/LEFT HAND SIDE			REGTERKANT/RIGHT HAND SIDE			
	Y	X	WG 19°	Y	X	
L1	- 19 882.922	3 789 795.721		R1	- 19 902.322	3 789 829.057
L2	- 19 935.139	3 789 788.041		R2	- 19 922.303	3 789 825.760
L3	- 20 205.019	3 789 753.747		R3	- 20 177.578	3 789 802.662
L4	- 20 305.216	3 789 732.885		R4	- 20 229.616	3 789 799.129
L5	- 20 512.356	3 789 707.412		R5	- 21 361.182	3 789 682.377
L6	- 20 679.386	3 789 699.389		R6	- 21 646.677	3 789 632.508
L7	- 20 891.671	3 789 671.239		R7	- 21 693.731	3 789 610.588
L8	- 21 006.024	3 789 658.413		R8	- 21 744.025	3 789 581.460
L9	- 21 005.174	3 789 648.167		R9	- 21 876.216	3 789 483.423
L10	- 21 012.700	3 789 645.053		R10	- 21 911.362	3 789 467.847
L11	- 21 024.740	3 789 656.643		R11	- 21 948.750	3 789 463.626
L12	- 21 243.847	3 789 636.260		R12	- 21 955.401	3 789 479.249
L13	- 21 322.888	3 789 644.564		R13	- 21 996.122	3 789 467.741
L14	- 21 544.496	3 789 620.780		R14	- 22 031.296	3 789 428.045
L15	- 21 623.897	3 789 598.946		R15	- 22 157.765	3 789 433.152
L16	- 21 707.045	3 789 557.254		R16	- 22 272.302	3 789 466.147
L17	- 21 823.107	3 789 472.536		R17	- 22 607.428	3 789 572.691
L18	- 21 875.850	3 789 426.541		R18	- 22 767.348	3 789 624.130
L19	- 21 931.625	3 789 395.970		R19	- 22 853.876	3 789 651.963
L20	- 21 981.204	3 789 359.709		R20	- 22 946.445	3 789 681.458
L21	- 22 132.396	3 789 376.369		R21	- 23 007.759	3 789 700.377
L22	- 22 189.184	3 789 379.514		R22	- 23 040.210	3 789 710.539
L23	- 22 209.838	3 789 384.317		R23	- 23 052.315	3 789 714.832
L24	- 22 340.792	3 789 437.015		R24	- 23 133.654	3 789 746.511
L25	- 22 664.536	3 789 539.113		R25	- 23 246.385	3 789 774.032
L26	- 22 793.885	3 789 578.392		R26	- 23 371.366	3 789 801.618
L27	- 22 974.277	3 789 633.173		R27	- 23 514.692	3 789 816.298
L28	- 23 008.908	3 789 641.792		R28	- 23 568.106	3 789 811.762
L29	- 23 144.157	3 789 675.966		R29	- 23 673.246	3 789 791.640
L30	- 23 251.988	3 789 717.575		R30	- 23 708.942	3 789 777.329
L31	- 23 388.488	3 789 761.177		R31	- 23 807.934	3 789 732.104
L32	- 23 537.510	3 789 773.354		R32	- 23 864.978	3 789 687.675
L33	- 23 633.347	3 789 754.748		R33	- 24 000.708	3 789 574.090
L34	- 23 692.034	3 789 738.350		R34	- 24 278.021	3 789 342.455
L35	- 23 746.056	3 789 714.261		R35	- 24 297.672	3 789 327.240
L36	- 23 820.658	3 789 669.657		R36	- 24 365.132	3 789 276.871
L37	- 23 868.581	3 789 632.911		R37	- 24 415.769	3 789 248.972
L38	- 24 188.683	3 789 366.079		R38	- 24 498.701	3 789 216.022
L39	- 24 263.420	3 789 302.634		R39	- 24 574.778	3 789 198.632
L40	- 24 358.130	3 789 234.552		R40	- 24 931.405	3 789 135.662
L41	- 24 455.375	3 789 188.927		R41	- 24 990.950	3 789 111.338
L42	- 24 555.580	3 789 161.041		R42	- 25 078.958	3 789 043.220
L43	- 24 942.876	3 789 088.271		R43	- 25 116.247	3 788 990.743
L44	- 25 029.997	3 789 027.844		R44	- 25 150.343	3 788 920.956
L45	- 25 075.380	3 788 970.848		R45	- 25 177.165	3 788 853.945
L46	- 25 132.664	3 788 855.405		R46	- 25 189.642	3 788 835.524
L47	- 25 156.596	3 788 802.464		R47	- 25 227.207	3 788 795.507
L48	- 25 205.331	3 788 741.744		R48	- 25 295.540	3 788 723.943
L49	- 25 269.691	3 788 694.644		R49	- 25 378.651	3 788 680.030
L50	- 25 328.719	3 788 663.052		R50	- 25 646.927	3 788 538.281
L51	- 25 551.527	3 788 543.802		R51	- 25 678.870	3 788 522.997

Vel	7	Van	10	P609/06
Sheet		of		



PADRESERWE KOÖRDINATE / ROAD RESERVE CO-ORDINATES						
LINKERKANT/LEFT HAND SIDE				REGTERKANT/RIGHT HAND SIDE		
	Y	X	WG 19°		Y	X
L52	- 25 650.014	3 788 492.533	R52	- 25 808.578	3 788 460.933	
L53	- 25 693.156	3 788 470.074	R53	- 25 872.172	3 788 422.848	
L54	- 25 794.704	3 788 383.945	R54	- 25 939.184	3 788 397.434	
L55	- 25 788.110	3 788 358.005	R55	- 25 985.035	3 788 389.771	
L56	- 25 809.624	3 788 345.310	R56	- 26 023.950	3 788 385.736	
L57	- 25 828.892	3 788 364.730	R57	- 26 047.328	3 788 389.424	
L58	- 25 916.774	3 788 369.279	R58	- 26 091.740	3 788 385.292	
L59	- 26 003.480	3 788 349.408	R59	- 26 143.171	3 788 391.839	
L60	- 26 086.284	3 788 350.578	R60	- 26 223.214	3 788 415.891	
L61	- 26 096.269	3 788 335.858	R61	- 26 275.858	3 788 437.834	
L62	- 26 107.141	3 788 338.297	R62	- 26 589.150	3 788 565.528	
L63	- 26 107.285	3 788 351.012	R63	- 26 654.792	3 788 592.181	
L64	- 26 156.996	3 788 360.755	R64	- 26 800.384	3 788 651.295	
L65	- 26 224.391	3 788 382.745	R65	- 26 853.926	3 788 673.035	
L66	- 26 501.894	3 788 493.587	R66	- 26 890.288	3 788 685.207	
L67	- 26 634.607	3 788 535.808	R67	- 26 963.735	3 788 694.966	
L68	- 26 707.202	3 788 565.454	R68	- 27 036.254	3 788 700.567	
L69	- 26 773.230	3 788 592.420	R69	- 27 095.311	3 788 698.289	
L70	- 26 868.057	3 788 631.146	R70	- 27 180.708	3 788 682.468	
L71	- 26 984.127	3 788 657.426	R71	- 27 229.096	3 788 693.517	
L72	- 27 124.659	3 788 649.049	R72	- 27 258.156	3 788 687.154	
L73	- 27 218.511	3 788 627.043	R73	- 27 318.630	3 788 638.382	
L74	- 27 504.149	3 788 531.164	R74	- 27 610.604	3 788 540.911	
L75	- 27 760.122	3 788 445.683	R75	- 28 009.338	3 788 407.798	
L76	- 27 807.827	3 788 432.361	R76	- 28 143.167	3 788 435.670	
L77	- 28 120.245	3 788 330.570	R77	- 28 198.283	3 788 344.468	
L78	- 28 263.224	3 788 219.273	R78	- 28 360.500	3 788 290.221	
L79	- 28 328.290	3 788 266.730	R79	- 28 699.643	3 788 176.050	
L80	- 28 643.010	3 788 156.149	R80	- 28 737.269	3 788 156.960	
L81	- 28 715.267	3 788 125.268	R81	- 28 756.054	3 788 147.150	
L82	- 28 759.322	3 788 096.621	R82	- 28 789.117	3 788 127.388	
L83	- 28 843.977	3 788 041.525	R83	- 29 333.666	3 787 746.343	
L84	- 29 071.297	3 787 885.296	R84	- 29 423.859	3 787 673.472	
L85	- 29 072.081	3 787 875.645	R85	- 29 467.390	3 787 627.431	
L86	- 29 078.526	3 787 871.393	R86	- 29 500.781	3 787 585.054	
L87	- 29 087.184	3 787 874.634	R87	- 29 540.911	3 787 520.820	
L88	- 29 274.597	3 787 745.175	R88	- 29 585.358	3 787 428.148	
L89	- 29 312.927	3 787 702.890	R89	- 29 626.516	3 787 363.616	
L90	- 29 409.136	3 787 619.199	R90	- 29 707.124	3 787 278.388	
L91	- 29 464.288	3 787 551.237	R91	- 29 766.830	3 787 241.423	
L92	- 29 541.649	3 787 414.853	R92	- 29 859.141	3 787 200.524	
L93	- 29 627.081	3 787 274.139	R93	- 29 919.042	3 787 191.023	
L94	- 29 708.438	3 787 208.059	R94	- 30 050.543	3 787 218.318	
L95	- 29 802.446	3 787 160.601	R95	- 30 123.754	3 787 243.679	
L96	- 29 854.413	3 787 144.911	R96	- 30 202.064	3 787 270.271	
L97	- 29 936.397	3 787 140.766	R97	- 30 273.557	3 787 285.035	
L98	- 30 003.242	3 787 150.958	R98	- 30 350.523	3 787 288.403	
L99	- 30 031.760	3 787 165.589	R99	- 30 398.351	3 787 282.837	
L100	- 30 114.325	3 787 196.916	R100	- 30 680.982	3 787 236.738	
L101	- 30 161.941	3 787 212.859	R101	- 30 917.371	3 787 195.934	
L102	- 30 306.119	3 787 243.783	R102	- 30 922.044	3 787 209.195	

Vel 8  
Sheet

Van 10  
of

P609/06

PADRESERWE KOÖRDINATE / ROAD RESERVE CO-ORDINATES					
LINKERKANT/LEFT HAND SIDE			REGTERKANT/RIGHT HAND SIDE		
	Y	X	WG 19°	Y	X
L103	- 30 372.511	3 787 243.358	R103	- 30 931.844	3 787 212.728
L104	- 30 415.235	3 787 239.098	R104	- 30 957.319	3 787 190.938
L105	- 30 800.518	3 787 180.151	R105	- 30 995.760	3 787 187.040
L106	- 30 806.202	3 787 151.034	R106	- 31 013.532	3 787 185.238
L107	- 30 832.306	3 787 146.408	R107	- 31 122.573	3 787 167.569
L108	- 30 846.072	3 787 164.824	R108	- 31 206.491	3 787 147.731
L109	- 31 004.438	3 787 146.591	R109	- 31 262.934	3 787 138.817
L110	- 31 024.605	3 787 144.269	R110	- 31 299.148	3 787 139.955
L111	- 31 187.385	3 787 117.489	R111	- 31 309.316	3 787 145.424
L112	- 31 212.655	3 787 107.044	R112	- 31 340.774	3 787 127.277
L113	- 31 335.877	3 787 095.860	R113	- 31 373.766	3 787 125.819
L114	- 31 396.543	3 787 078.077	R114	- 31 522.261	3 787 107.375
L115	- 31 473.700	3 787 068.036	R115	- 31 618.417	3 787 108.864
L116	- 31 514.196	3 787 066.090	R116	- 31 740.831	3 787 122.506
L117	- 31 634.704	3 787 064.558	R117	- 32 389.300	3 787 219.928
L118	- 31 663.903	3 787 062.533	R118	- 32 633.057	3 787 256.550
L119	- 31 819.380	3 787 084.471	R119	- 32 741.546	3 787 263.080
L120	- 32 056.354	3 787 120.119	R120	- 32 821.768	3 787 267.052
L121	- 32 311.220	3 787 157.580	R121	- 32 938.440	3 787 268.107
L122	- 32 599.079	3 787 199.453	R122	- 33 056.076	3 787 263.243
L123	- 32 677.084	3 787 208.257	R123	- 33 113.607	3 787 257.749
L124	- 32 852.811	3 787 216.406	R124	- 33 129.071	3 787 273.874
L125	- 33 011.333	3 787 210.122	R125	- 33 140.554	3 787 269.625
L126	- 33 166.723	3 787 206.037	R126	- 33 142.904	3 787 255.219
L127	- 33 211.066	3 787 207.885	R127	- 33 258.276	3 787 244.091
L128	- 33 581.224	3 787 171.531	R128	- 34 287.603	3 787 145.537
L129	- 34 302.248	3 787 102.630	R129	- 34 426.602	3 787 132.228
L130	- 34 444.857	3 787 089.004	R130	- 34 958.936	3 787 081.332
L131	- 34 467.817	3 787 083.074	R131	- 35 036.416	3 787 072.209
L132	- 34 907.801	3 787 038.690	R132	- 35 246.225	3 787 036.552
L133	- 35 070.217	3 787 019.732	R133	- 35 732.029	3 786 934.046
L134	- 35 160.435	3 787 004.167	R134	- 35 878.928	3 786 902.627
L135	- 35 326.360	3 786 971.413	R135	- 35 893.261	3 786 892.486
L136	- 35 698.605	3 786 893.617	R136	- 35 911.593	3 786 900.556
L137	- 35 845.456	3 786 860.338	R137	- 35 947.672	3 786 905.086
L138	- 35 870.125	3 786 853.378	R138	- 36 121.855	3 786 897.620
L139	- 35 954.780	3 786 841.729	R139	- 36 258.990	3 786 929.424
L140	- 35 960.439	3 786 834.048	R140	- 36 393.754	3 786 980.155
L141	- 35 985.980	3 786 839.983	R141	- 36 483.872	3 787 025.094
L142	- 36 037.062	3 786 843.296	R142	- 36 487.609	3 787 029.453
L143	- 36 137.381	3 786 851.818	R143	- 36 496.288	3 787 030.385
L144	- 36 143.271	3 786 851.576	R144	- 36 565.962	3 787 079.287
L145	- 36 228.739	3 786 872.790	R145	- 36 564.958	3 787 080.026
L146	- 36 339.620	3 786 900.572	R146	- 36 575.876	3 787 087.686
L147	- 36 477.662	3 786 953.653	R147	- 36 593.705	3 787 100.195
L148	- 36 547.848	3 786 993.774	R148	- 36 602.835	3 787 108.489
L149	- 36 600.642	3 787 033.404	R149	- 36 702.566	3 787 182.085
L150	- 36 620.472	3 787 048.741	R150	- 36 729.075	3 787 204.364
L151	- 36 649.630	3 787 072.563	R151	- 36 769.656	3 787 246.748
L152	- 36 726.741	3 787 145.776	R152	- 36 804.656	3 787 296.614
L153	- 36 754.055	3 787 164.264	R153	- 36 836.184	3 787 369.357

Vel	9	Van	10	P609/06
Sheet		of		

PADRESERWE KOÖRDINATE / ROAD RESERVE CO-ORDINATES						
LINKERKANT/LEFT HAND SIDE			REGTERKANT/RIGHT HAND SIDE			
	Y	X	WG 19°	Y	X	
L154	- 36 817.079	3 787 248.779		R154	- 36 866.220	3 787 509.722
L155	- 36 845.956	3 787 293.889		R155	- 36 877.062	3 787 559.463
L156	- 36 864.812	3 787 333.637		R156	- 36 898.734	3 787 625.017
L157	- 36 896.485	3 787 415.850		R157	- 36 932.557	3 787 691.141
L158	- 36 913.406	3 787 519.098		R158	- 36 989.297	3 787 768.049
L159	- 36 926.891	3 787 575.829		R159	- 37 313.698	3 788 148.527
L160	- 36 940.770	3 787 608.684		R160	- 37 394.902	3 788 235.147
L161	- 36 986.755	3 787 692.889		R161	- 37 428.395	3 788 263.257
L162	- 37 031.128	3 787 746.311		R162	- 37 485.175	3 788 310.912
L163	- 37 143.427	3 787 884.442		R163	- 37 552.789	3 788 354.784
L164	- 37 236.043	3 787 986.761		R164	- 37 682.484	3 788 426.742
L165	- 37 281.040	3 788 046.387		R165	- 38 349.385	3 788 773.888
L166	- 37 304.401	3 788 055.792		R166	- 38 389.506	3 788 794.865
L167	- 37 310.284	3 788 080.127		R167	- 38 455.049	3 788 825.156
L168	- 37 384.450	3 788 160.756		R168	- 38 578.854	3 788 859.622
L169	- 37 428.900	3 788 203.956		R169	- 38 748.669	3 788 899.236
L170	- 37 433.661	3 788 208.412		R170	- 39 046.809	3 788 968.664
L171	- 37 496.323	3 788 267.061		R171	- 39 234.511	3 789 011.280
L172	- 37 649.384	3 788 362.127		R172	- 39 229.480	3 789 032.124
L173	- 37 897.473	3 788 491.448		R173	- 39 247.956	3 789 035.820
L174	- 38 055.233	3 788 568.519		R174	- 39 311.574	3 789 020.681
L175	- 38 196.758	3 788 649.409		R175	- 39 342.096	3 789 008.423
L176	- 38 241.822	3 788 672.025		R176	- 39 422.660	3 789 015.180
L177	- 38 365.451	3 788 728.908		R177	- 39 423.589	3 789 038.484
L178	- 38 456.211	3 788 778.905		R178	- 39 476.914	3 789 019.388
L179	- 38 523.398	3 788 812.807		R179	- 39 543.425	3 788 995.571
L180	- 38 657.352	3 788 846.089		R180	- 39 573.239	3 788 982.413
L181	- 38 887.550	3 788 899.857		R181	- 39 592.564	3 788 985.524
L182	- 38 901.802	3 788 902.338		R182	- 39 615.447	3 788 990.577
L183	- 38 992.140	3 788 923.050		R183	- 39 627.313	3 788 992.038
L184	- 39 054.603	3 788 937.868		R184	- 39 650.988	3 788 981.795
L185	- 39 241.636	3 788 981.752		R157X	- 36 946.260	3 787 709.810
L186	- 39 262.160	3 788 976.801				
L187	- 39 446.557	3 788 949.695				
L188	- 39 564.120	3 788 926.759				
L189	- 39 593.809	3 788 930.620				
L190	- 39 611.357	3 788 930.387				
L191	- 39 644.072	3 788 931.852				

Vel	10	Van	10	P609/06
Sheet		of		