

---

GOVERNMENT NOTICE  
GOEWERMENTSKENNISGEWING

---

DEPARTMENT OF TRANSPORT  
DEPARTEMENT VAN VERVOER

No. 141

8 February 2008

THE SOUTH AFRICAN NATIONAL ROADS  
AGENCY LIMITED

Registration No: 98/09584/06

---

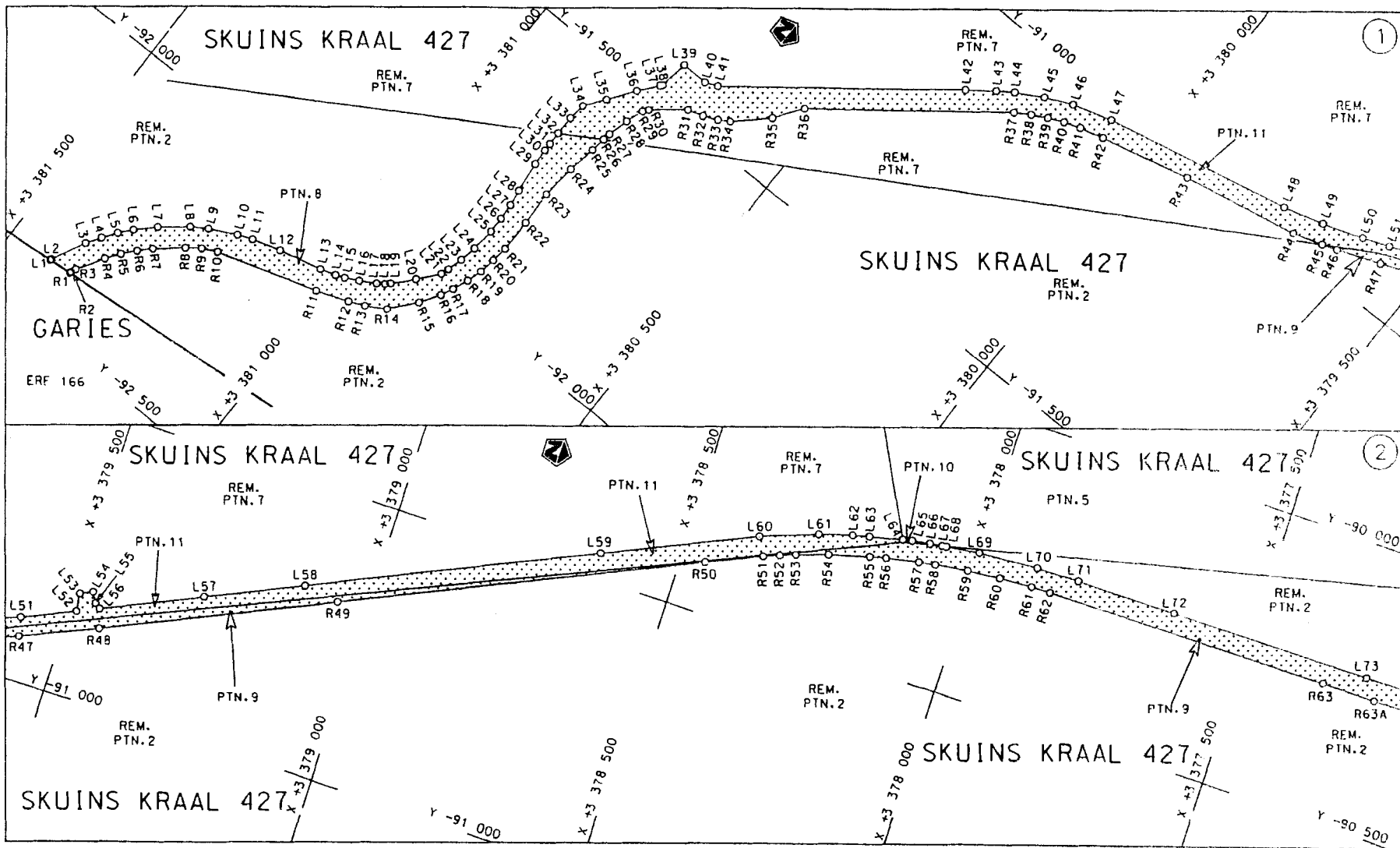
DECLARATION AMENDMENT OF NATIONAL ROAD N7 SECTION 7

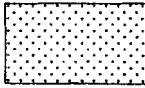
AMENDMENT OF DECLARATION NO. 2693 OF 1990.

By virtue of section 40 (1)(b) of the South African National Roads Agency Limited and the National Roads Act, 1998 (Act No. 7 of 1998), I hereby amend the following declaration by substituting Declaration No. 2693 of 1990, from sheet 1 up to points L584 and R532 on sheet 21 of Plan No. P367/90 and the applicable co-ordinates, with the subjoined sheets 1 to 40 of Plan No. P633/07.

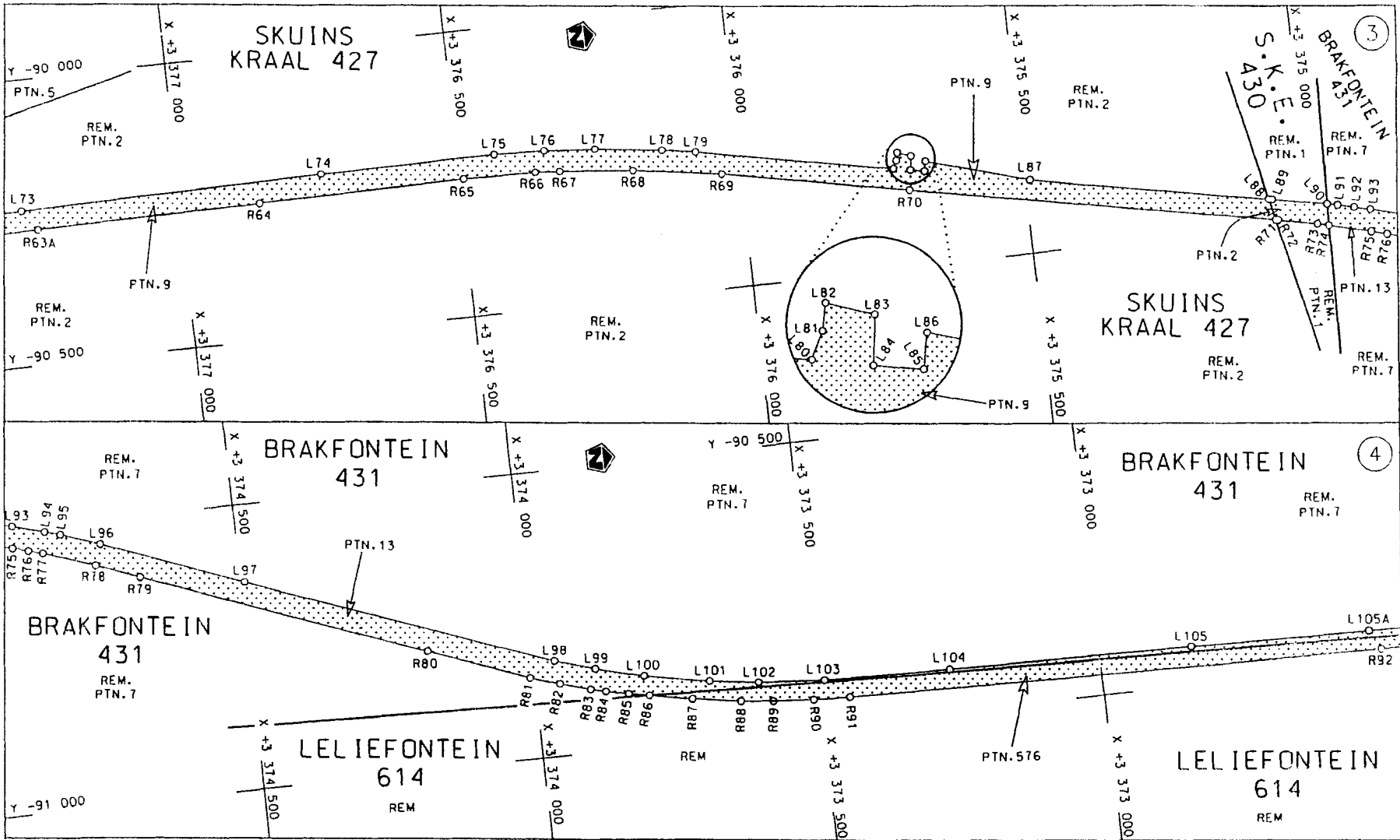
(National Road N7 Section 7: Garies – Springbok)

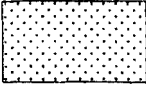
  
\_\_\_\_\_  
MINISTER OF TRANSPORT

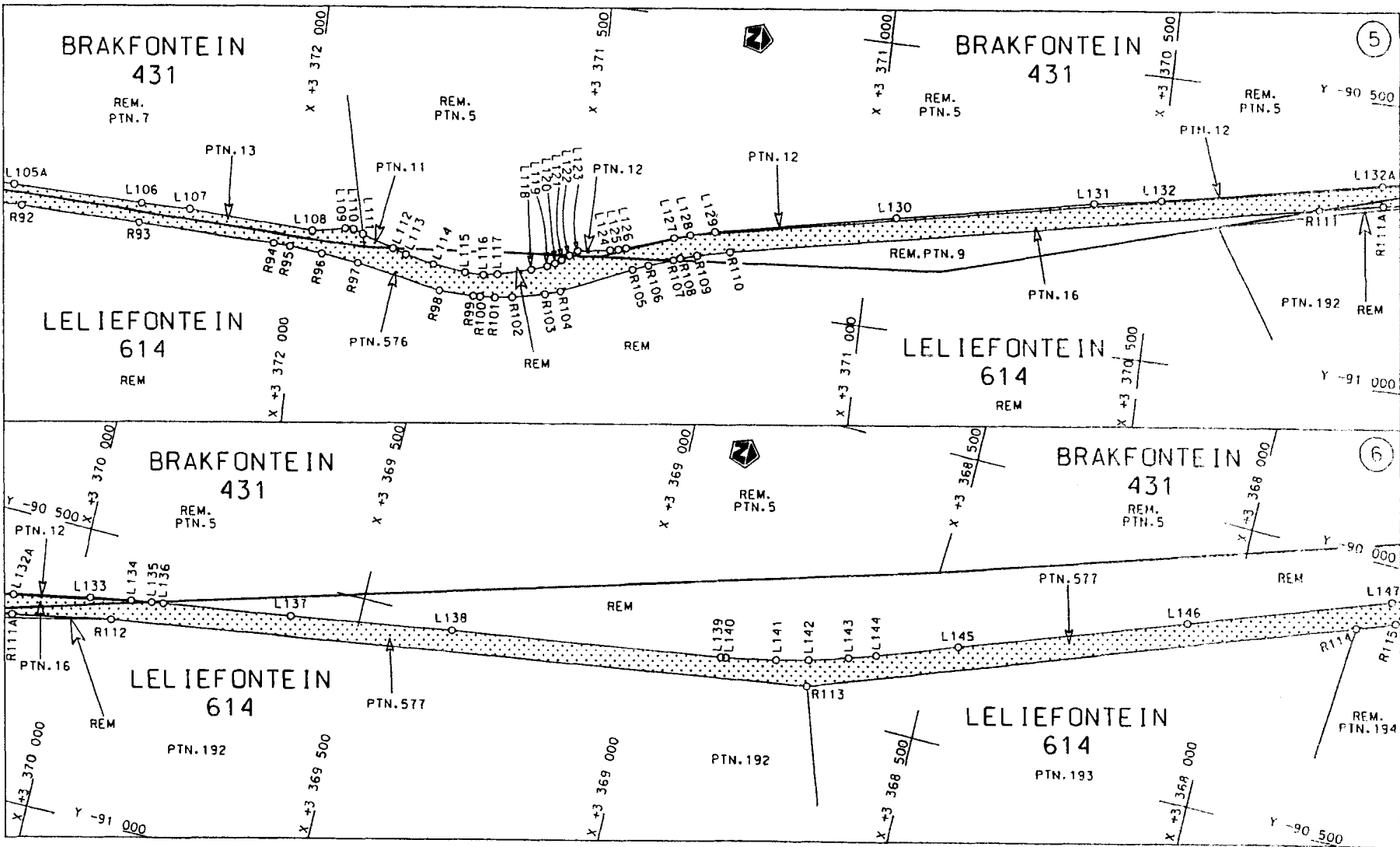


<p>Die Suid Afrikaanse Nasionale Padagentskap Beperk The South African National Roads Agency Limited</p>	<p>Die figuur getoon The figure shown</p> 	<p>steldie padreserwe voor van 'n gedeelte represents the road reserve of a portion van Nasionale Roete N7 of National Route N7</p> <p>Seksie Section 7</p>	<p>Vel Sheet 1 van of 40 Plan P633/07</p>
--	---	---	---

D.O.9.A



<p>Die Suid Afrikaanse Nasionale Padogentskap Beperk The South African National Roads Agency Limited</p>	<p>Die figuur getoon The figure shown</p>		<p>steldie padreserwe voor van 'n gedeelte represents the road reserve of a portion van Nasionale Roete N7 of National Route N7</p> <p>Seksie 7</p>	<p>Vel Sheet 2 van 40 of 40 Plan P633/07</p>
--	---	---	---	--

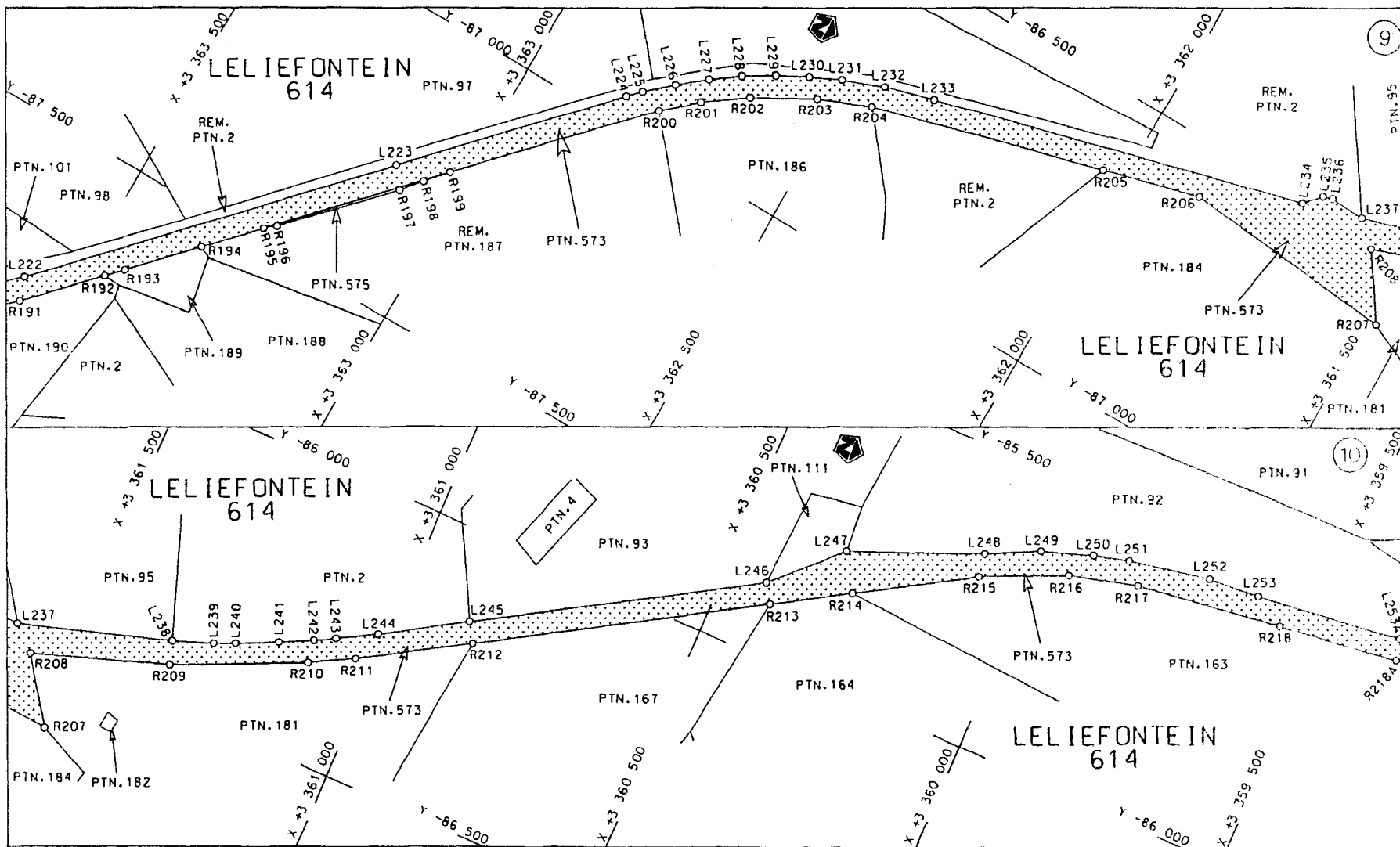


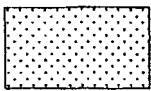
D.O.B.A

STAATSKOERANT, 8 FEBRUARIE 2008

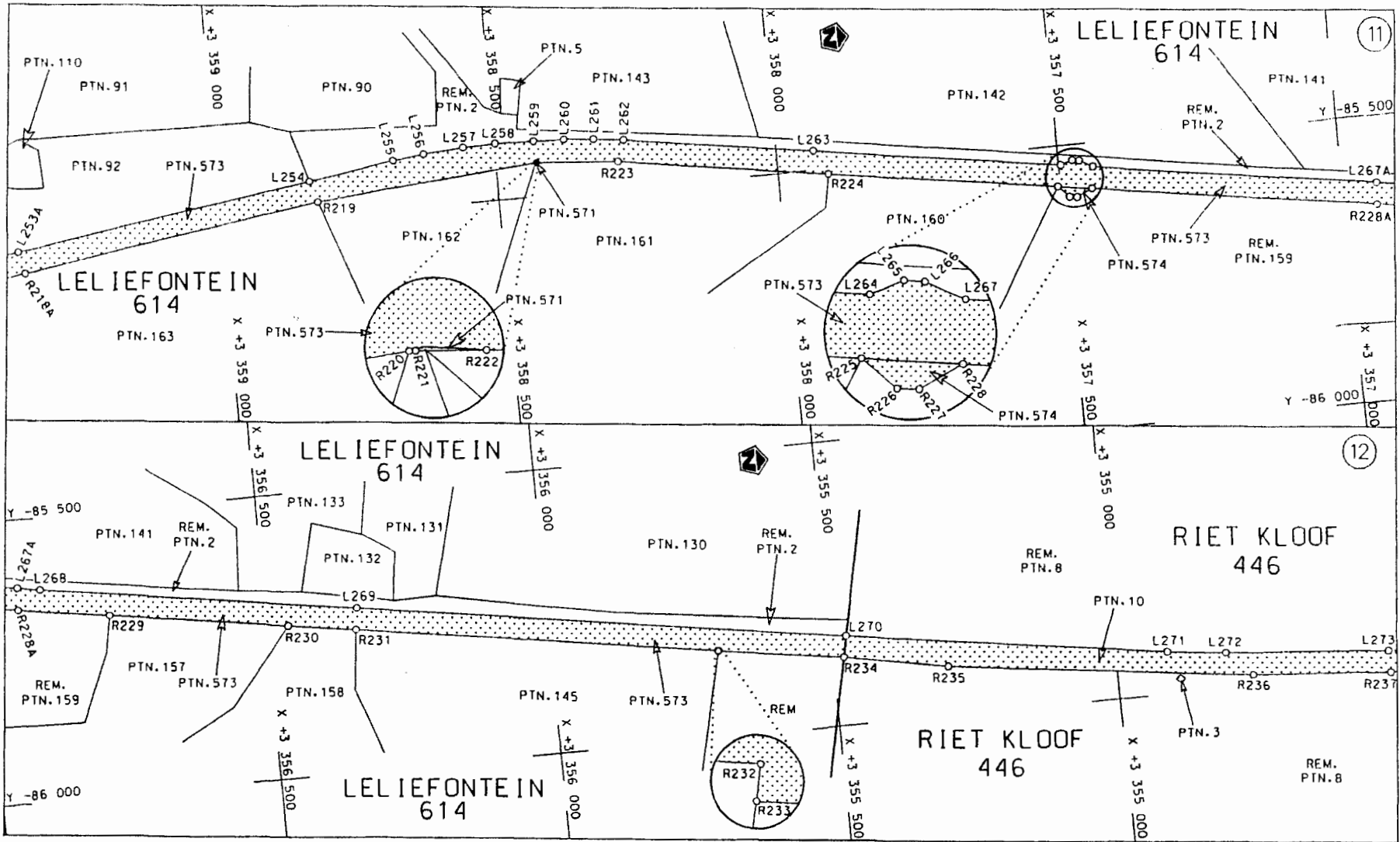
NO. 30743 7





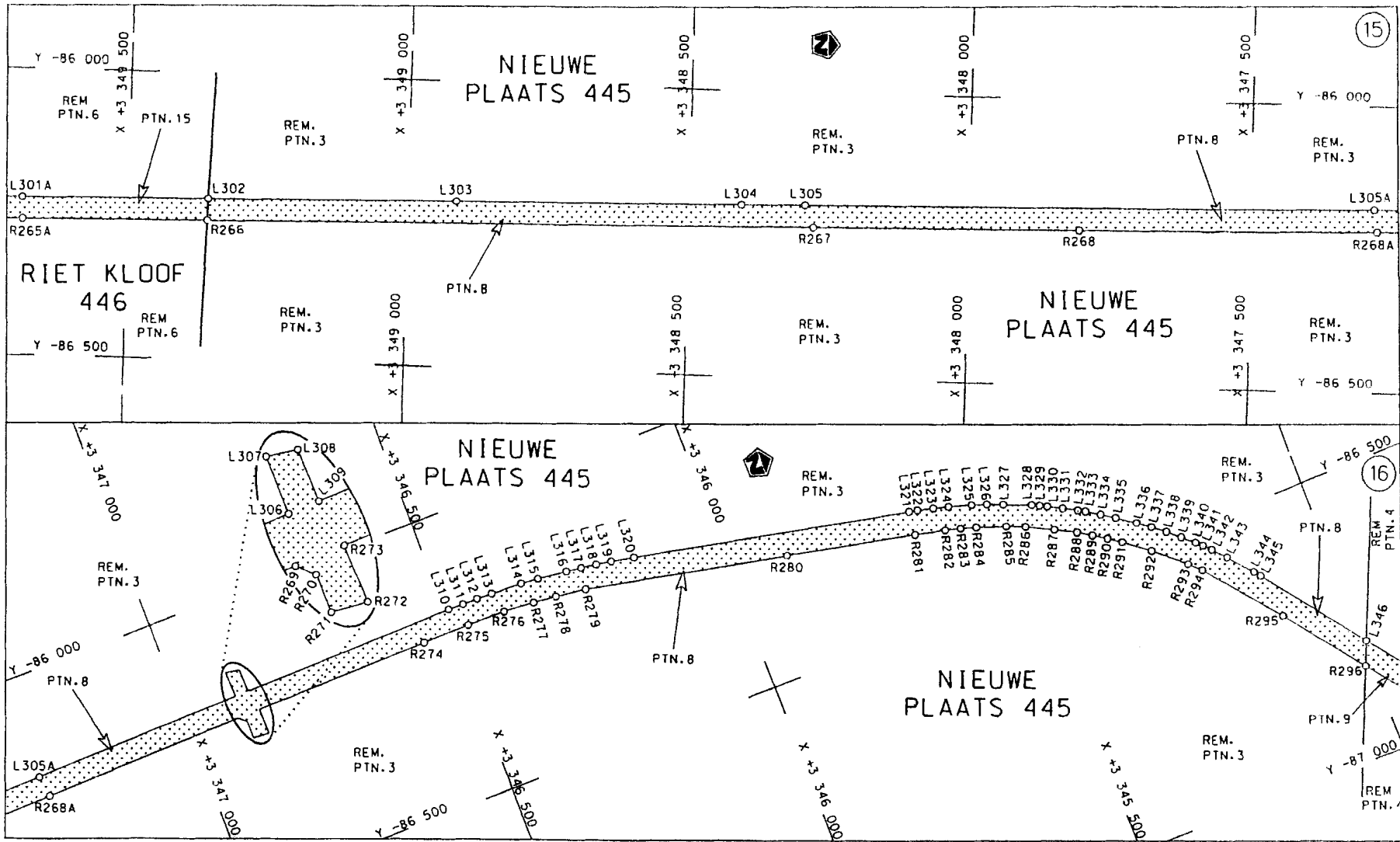
<p>Die Suid Afrikaanse Nasionale Padagentskap Beperk The South African National Roads Agency Limited</p>	<p>Die figuur getoon The figure shown</p> 	<p>steldie podreserwe voor van 'n gedeelte represents the road reserve of a portion van Nasionale Roete N7 Sektie 7 of National Route N7 Section 7</p>	<p>Vel Sheet 5 van of 40 Plan P6.33/07</p>
--	---	--	--

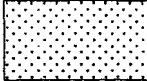
D.O.9 A





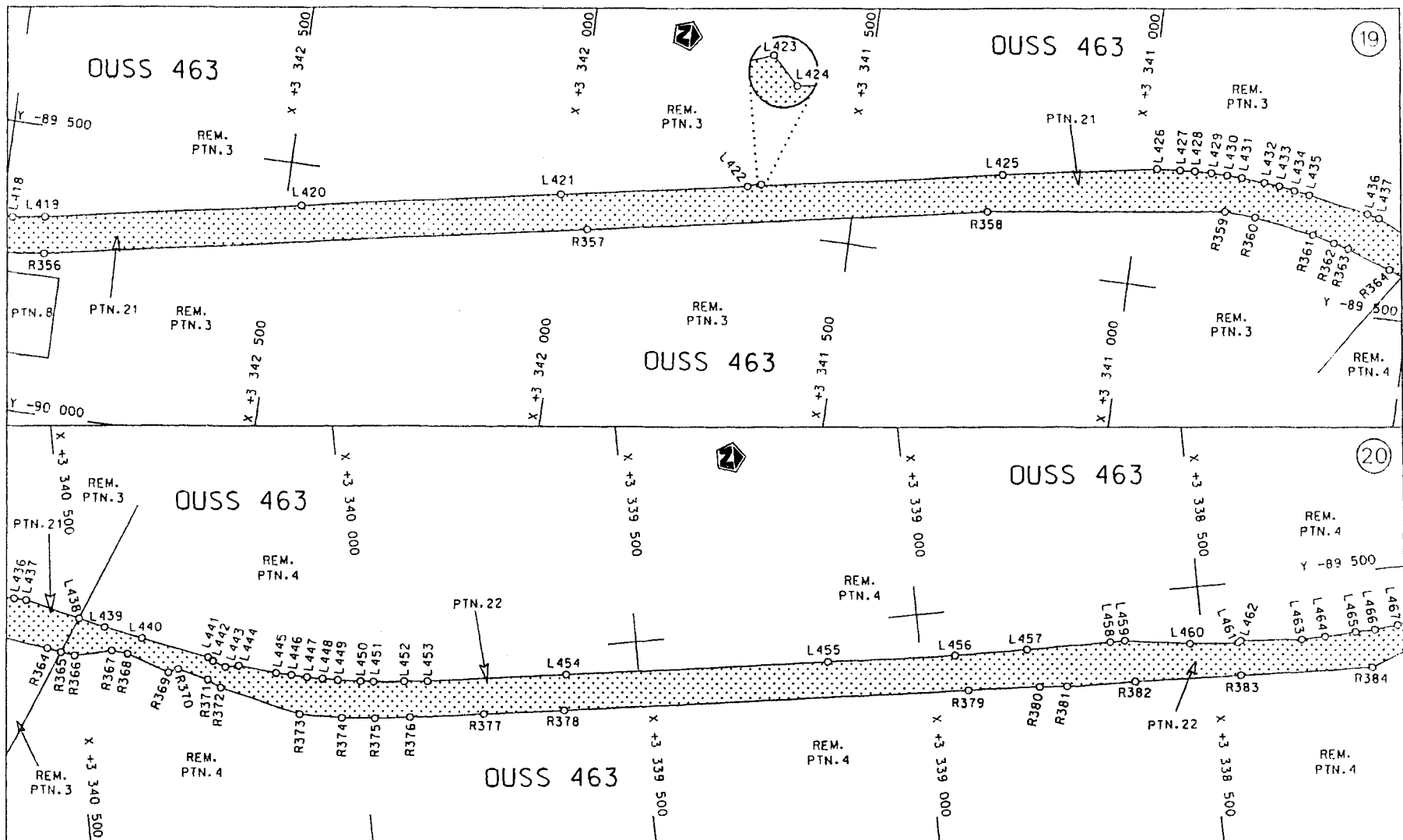


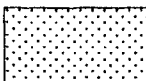


<p>Die Suid Afrikaanse Nasionale Padagentskap Beperk The South African National Roads Agency Limited</p>	<p>Die figuur getoon The figure shown</p> 	<p>steldie padreserwe voor van 'n gedeelte represents the road reserve of a portion von Nasionale Roete of National Route N7</p> <p>Seksie Section 7</p>	<p>Vel Sheet 8 von of 40</p> <p>Plan P633/07</p>
--	--	--	--

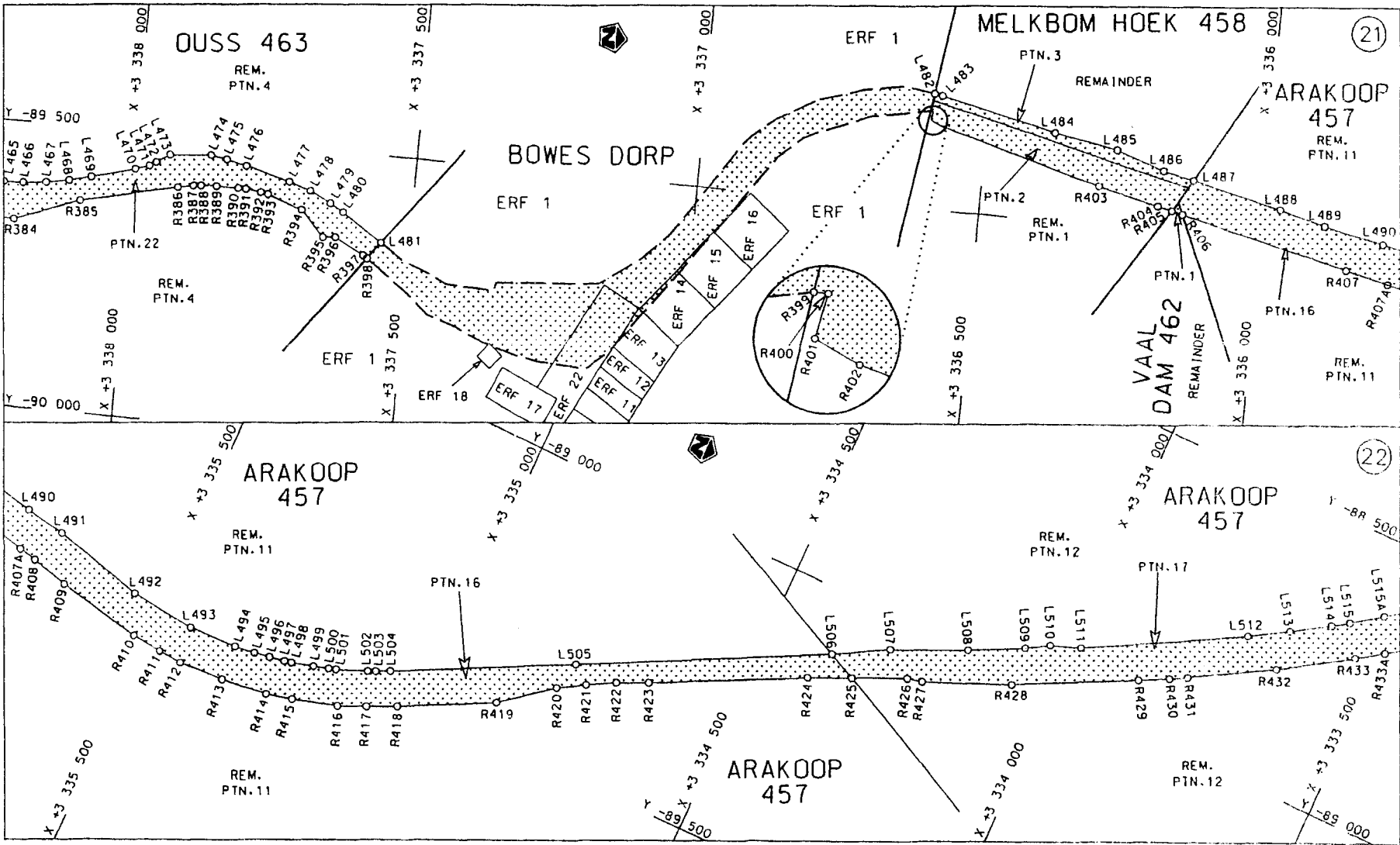
D.O.9.A





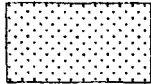
Die Suid Afrikaanse Nasionale Padagentskap Beperk The South African National Roads Agency Limited	Die figuur getoon The figure shown	 steldie padreserve voor van 'n gedeelte represents the road reserve of a portion van Nasionale Roete N7 Seksie of National Route N7 Section 7	Vel van Sheet 10 of 40 Plan P633/07
--	---------------------------------------	--	---

D.O.9.A



Die Suid Afrikaanse Nasionale Padagentskop Beperk  
 The South African National Roads Agency Limited

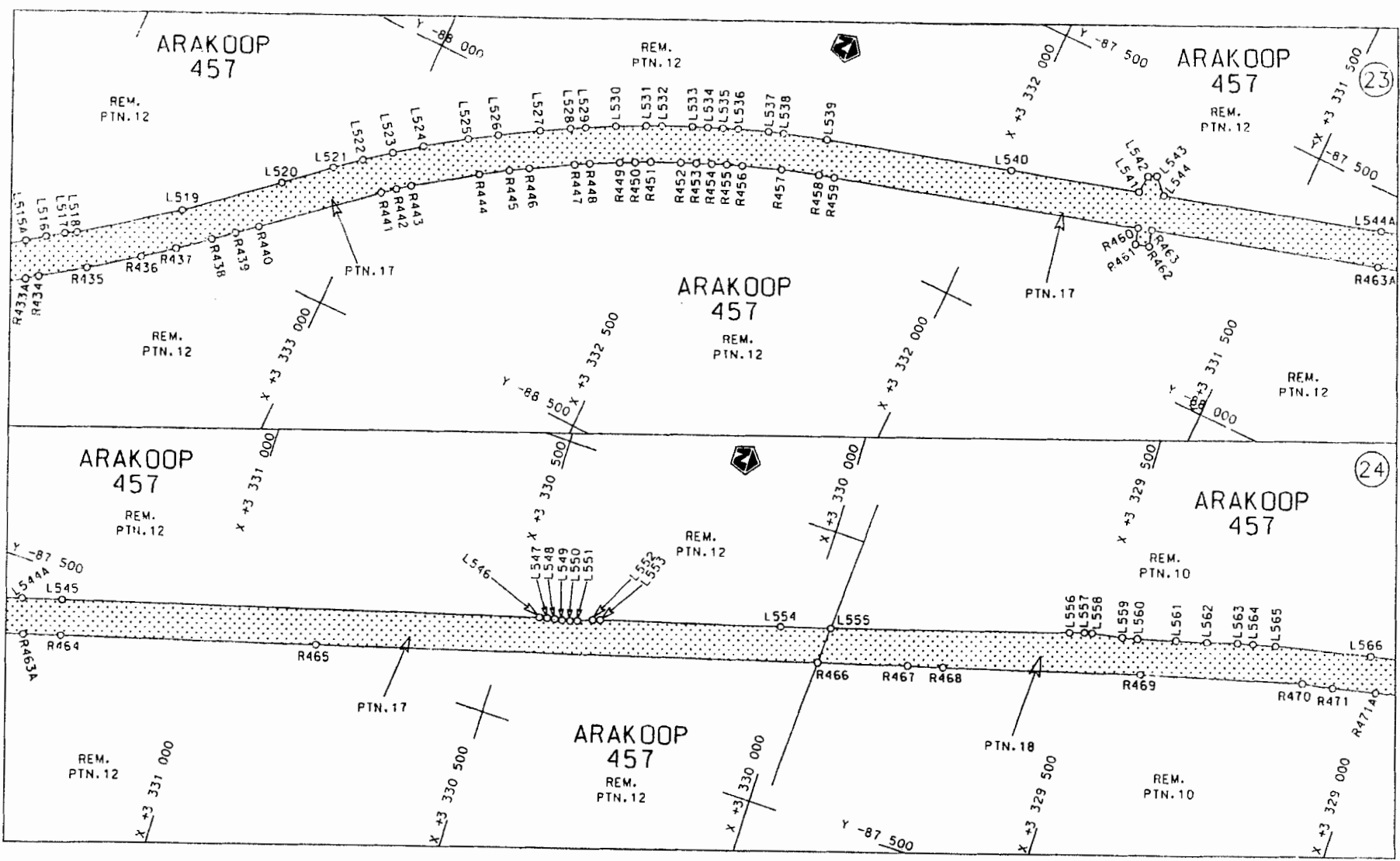
Die figuur getoon  
 The figure shown

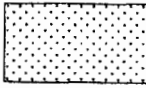


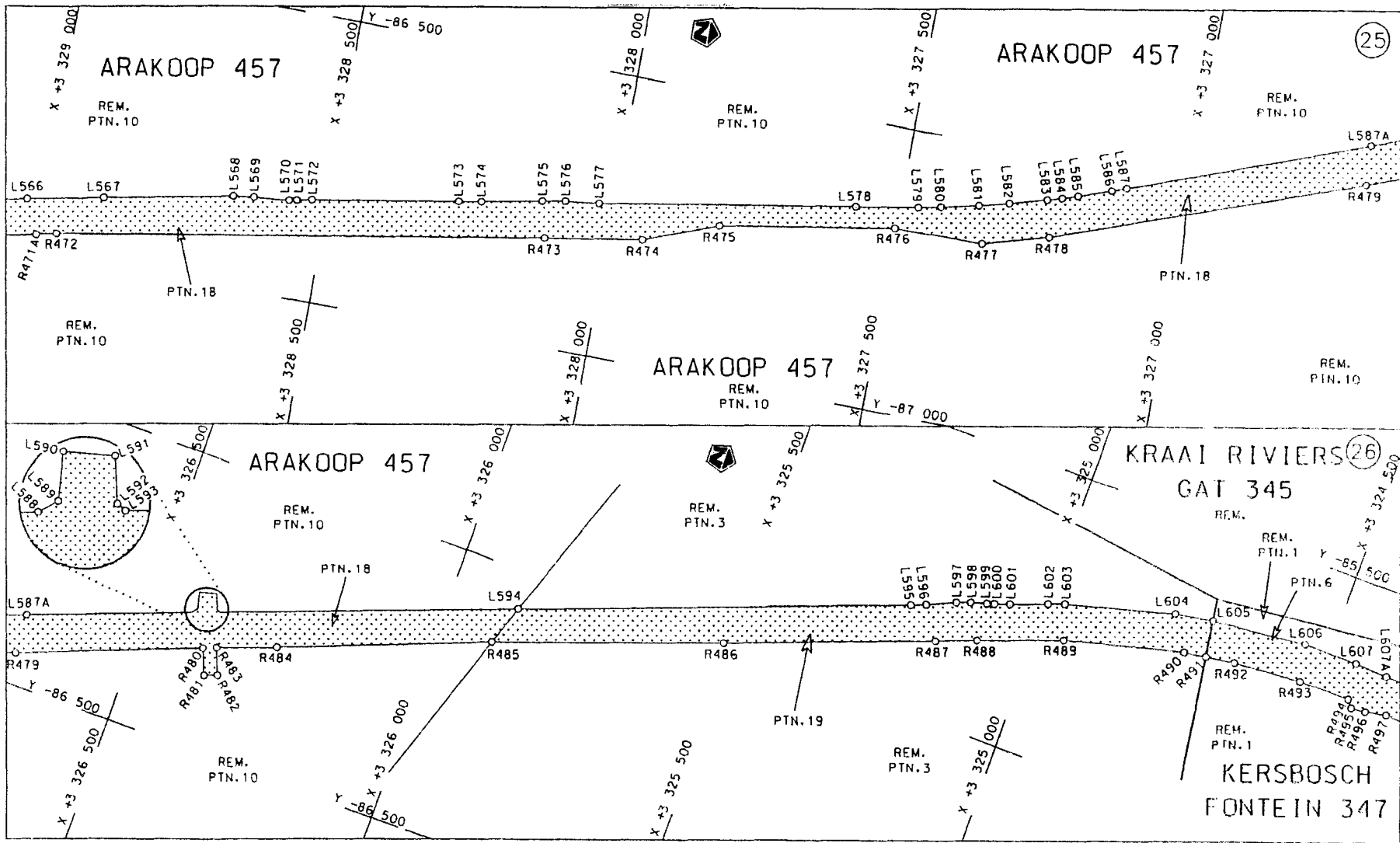
stel die padreserwe voor van 'n gedeelte  
 represents the road reserve of a portion  
 von Nasionale Roete N7 Seksie  
 of National Route Section 7

Vel van  
 Sheet 11 of 40  
 Plan P6.33/07

D.O.G.A

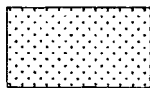


<p>Die Suid Afrikaanse Nasionale Padagentskap Beperk The South African National Roads Agency Limited</p>	<p>Die figuur getoon The figure shown</p> 	<p>steldie padreserwe voor van 'n gedeelte represents the rood reserve of a portion van Nasionale Roete N7 of National Route N7</p> <p>Seksie Section</p> <p>7</p>	<p>Vel Sheet 12 van 40 of</p> <p>Plan P633/07</p>
--	--	--	---



Die Suid Afrikaanse Nasionale Padagentskap Beperk  
 The South African National Roads Agency Limited

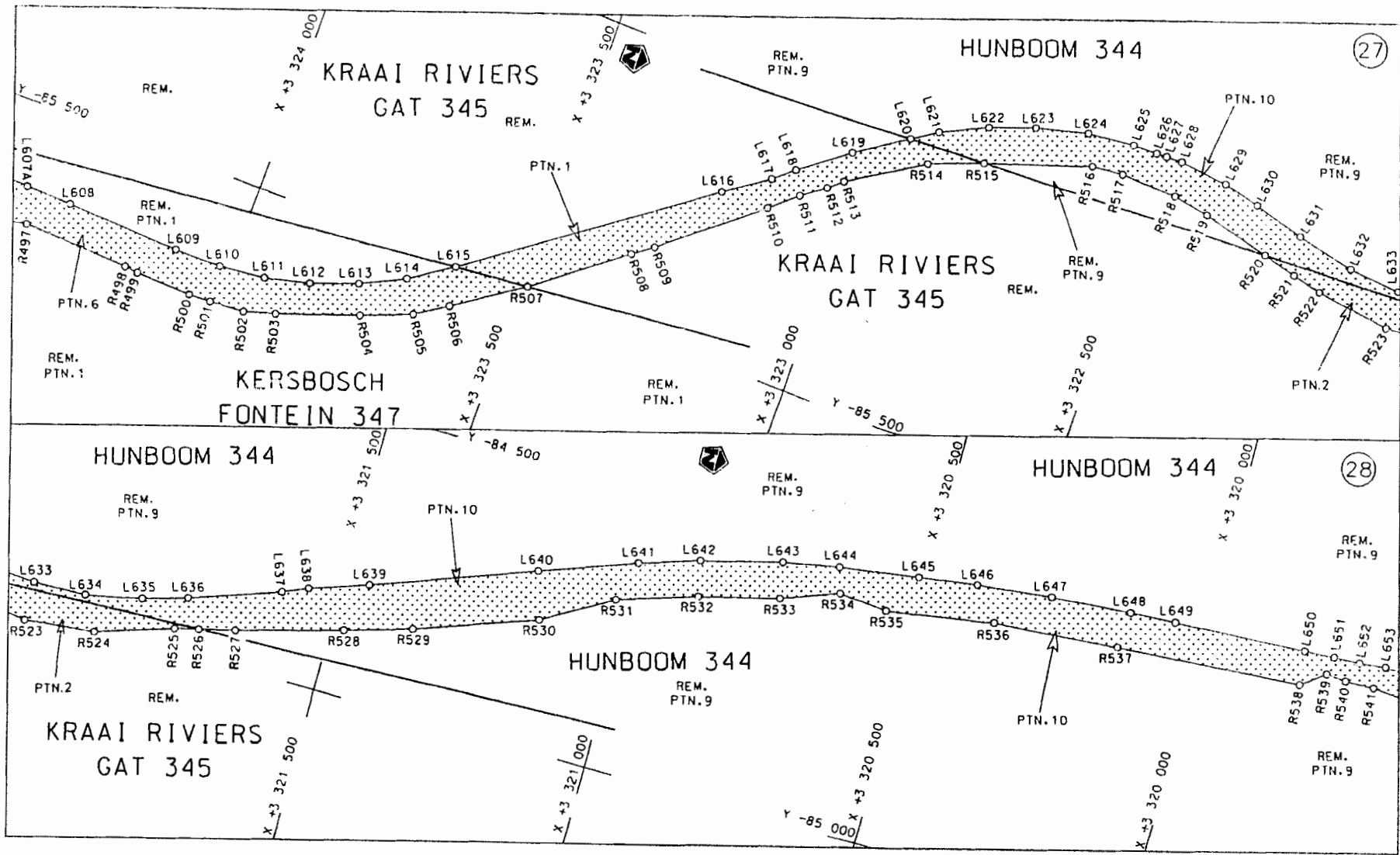
Die figuur getoon  
 The figure shown

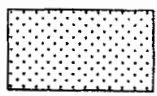


stel die podreserwe voor van 'n gedeelte  
 represents the road reserve of a portion  
 van Nasionale Roete N7 Seksie Section  
 of National Route 7

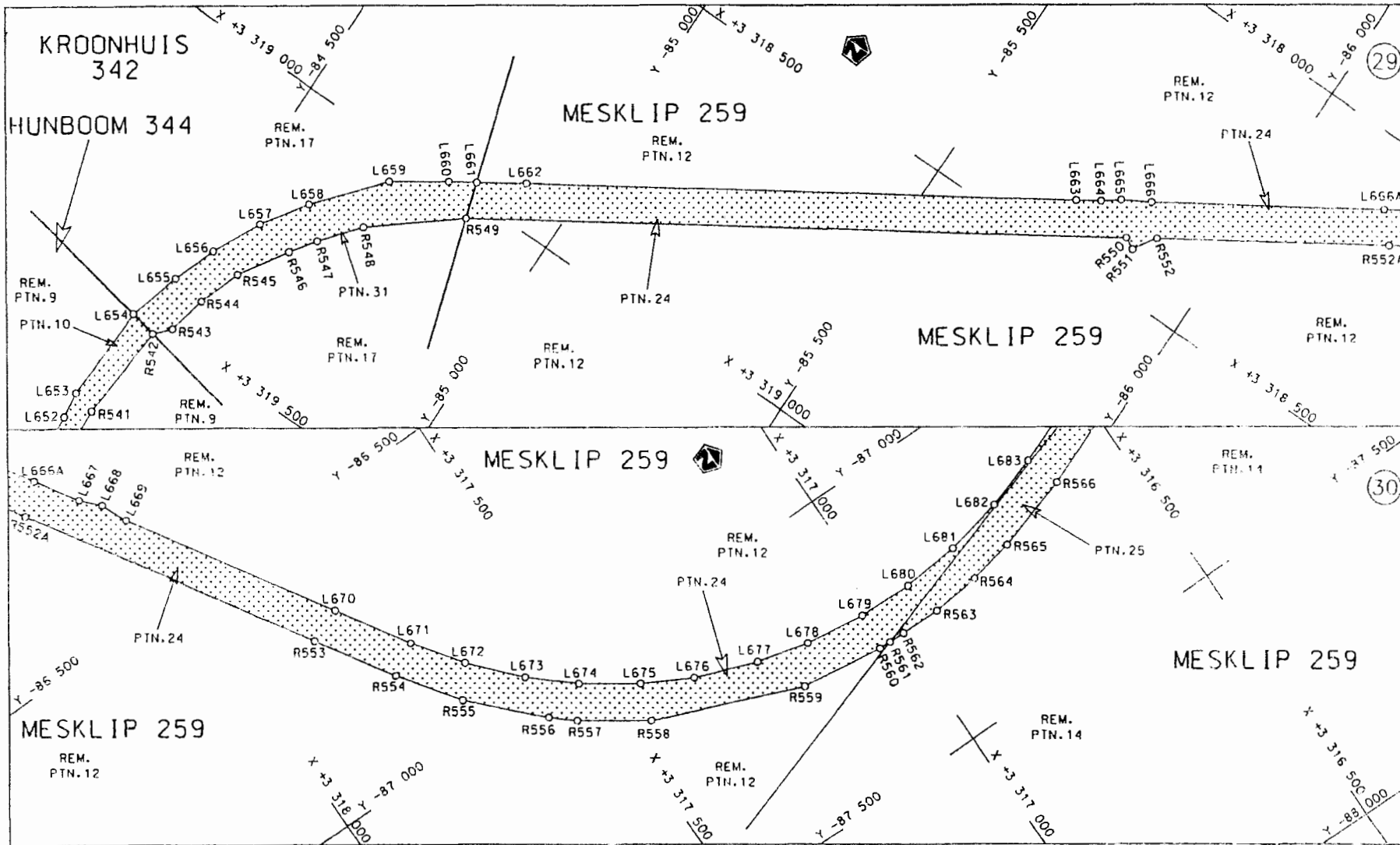
Vel Sheet 13 van 40  
 Plan P633/07

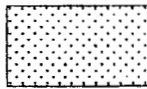
D.O.9.A



<p>Die Suid Afrikaanse Nasionale Padagentskap Beperk The South African National Roads Agency Limited</p>	<p>Die figuur getoon The figure shown</p> 	<p>steldie padreserwe voor van 'n gedeelte represents the road reserve of a portion van Nasionale Roete N7 of Notional Route N7</p> <p>Seksie 7</p>	<p>Vel Sheet 14 van 40 of of Plan P633/07</p>
--	--	---	---

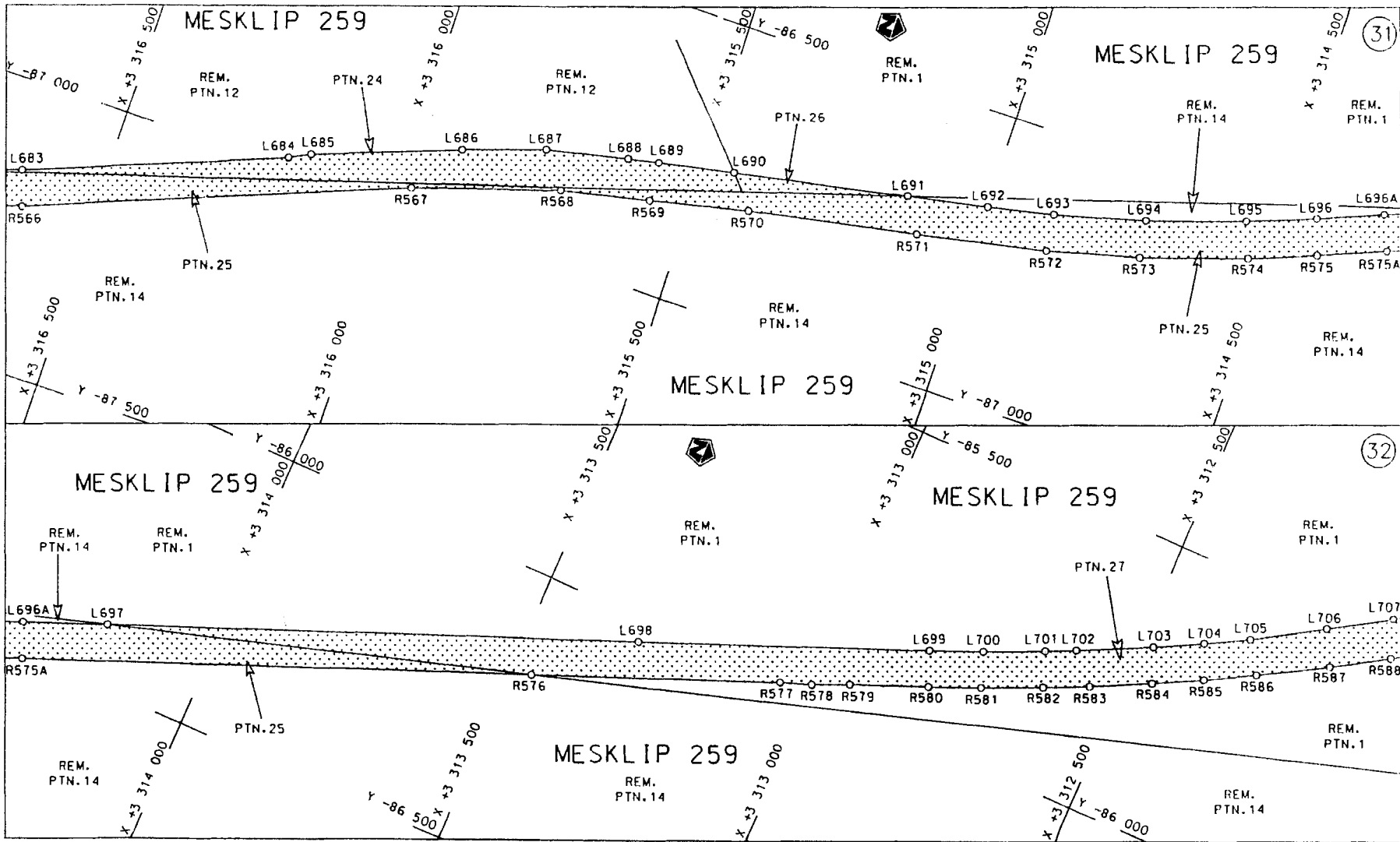
D.O.9.A



Die Suid Afrikaanse Nasionale Padagentskap Beperk The South African National Roads Agency Limited	Die figuur getoon The figure shown	 steldie padreserwe voor van 'n gedeelte represents the road reserve of a portion van Nasionale Roete N7 Seksie Section 7 of National Route	Vel Sheet 15 van of 40 Plan P633/07
--	---------------------------------------	--	--

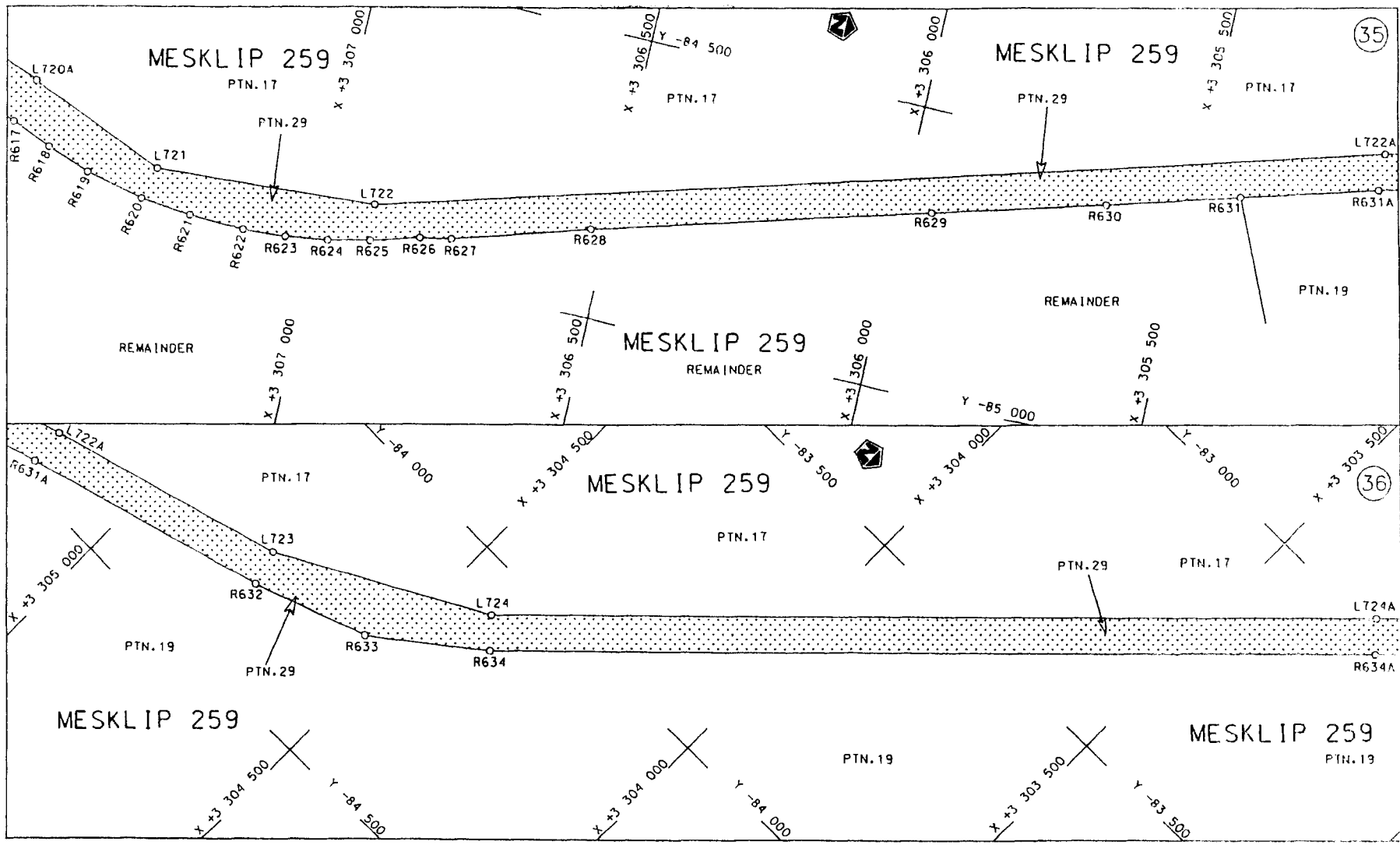
D.O.G.A



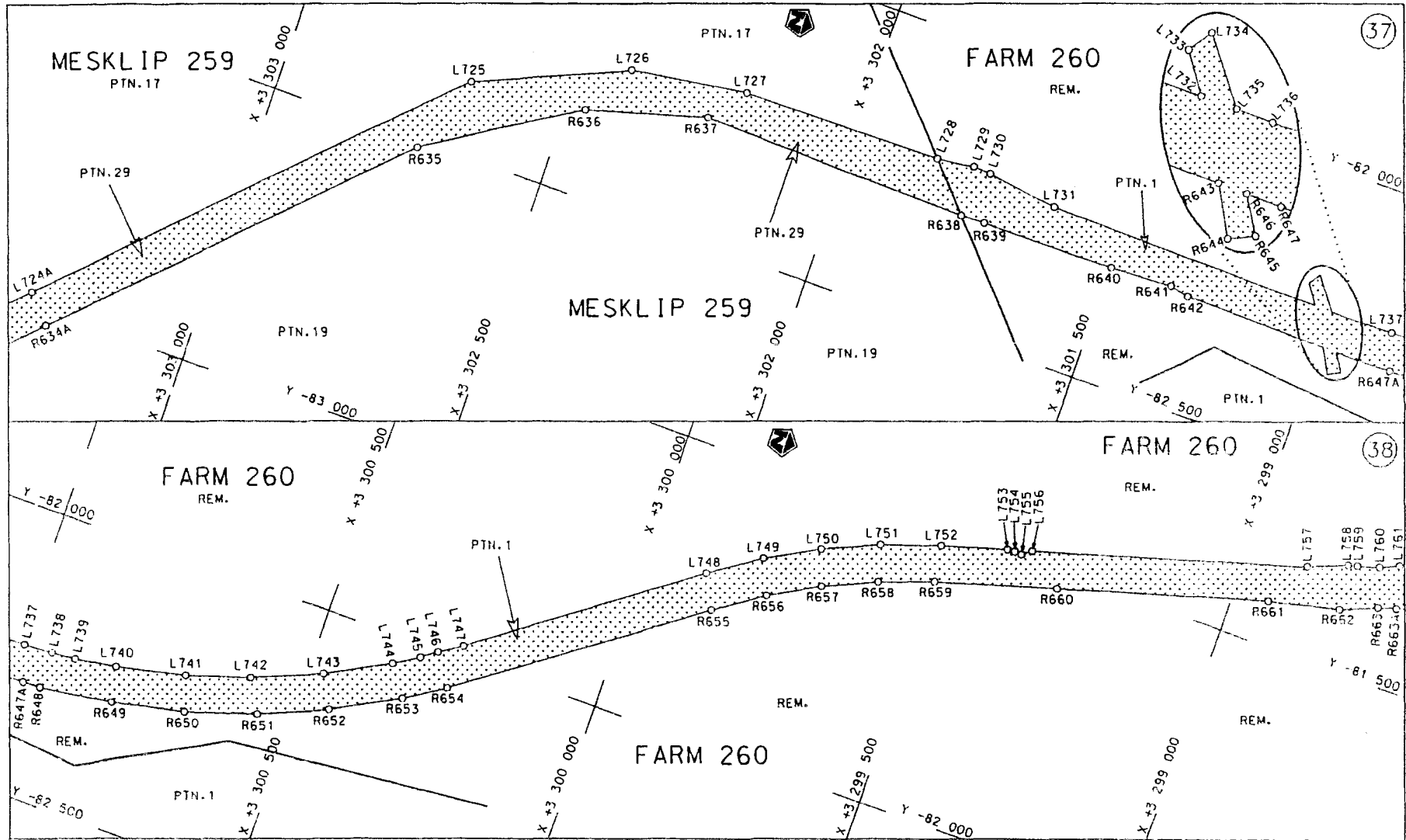


<p>Die Suid Afrikaanse Nasionale Padagentskap Beperk The South African National Roads Agency Limited</p>	<p>Die figuur getoon The figure shown</p>		<p>steldie padreserwe voor van 'n gedeelte represents the road reserve of a portion van Nasionale Roete N7 Seksie 7 of National Route</p>	<p>Vel Sheet 16 van 40 Plan P633/07</p>
--	---	--	---	---



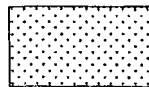


<p>Die Suid Afrikaanse Nasionale Padagentskap Beperk The South African National Roads Agency Limited</p>	<p>Die figuur getoon The figure shown</p>		<p>steldie padreserwe voor van 'n gedeelte represents the road reserve of a portion van Nasionale Roete N7 Seksie 7 of National Route Section</p>	<p>Vel Sheet 18 van of 40 Plan P633/07</p>
--	---	--	---	--



Die Suid Afrikaanse Nasionale Padagentskap Beperk  
The South African National Roads Agency Limited

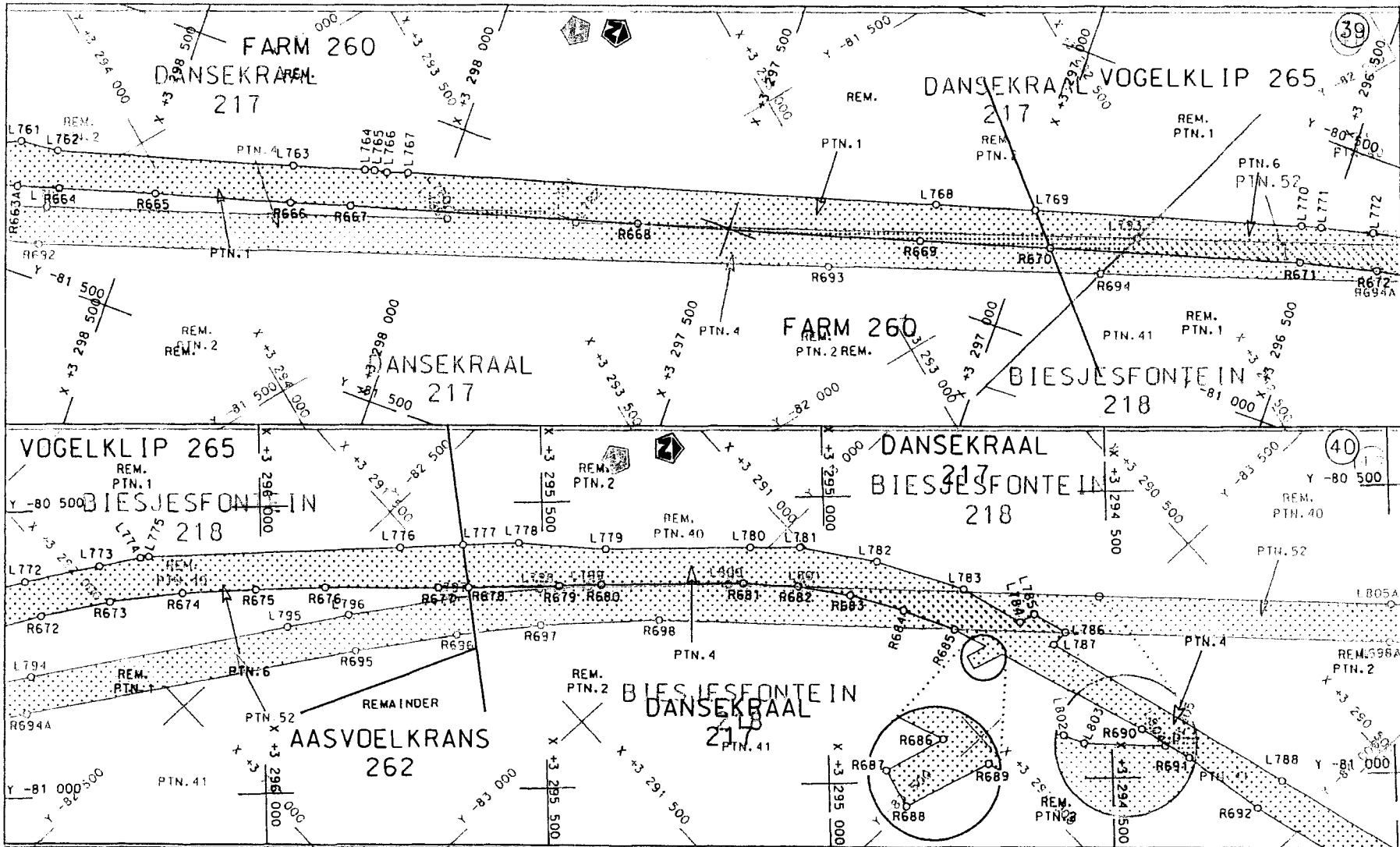
Die figuur getoon  
The figure shown



steld die padreserwe voor van 'n gedeelte  
represents the road reserve of a portion  
van Nasionale Roete N7 Seksie  
of National Route Section 7

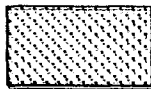
Vel van  
Sheet 19 of 40  
Plan P633/07

D.O.9.A



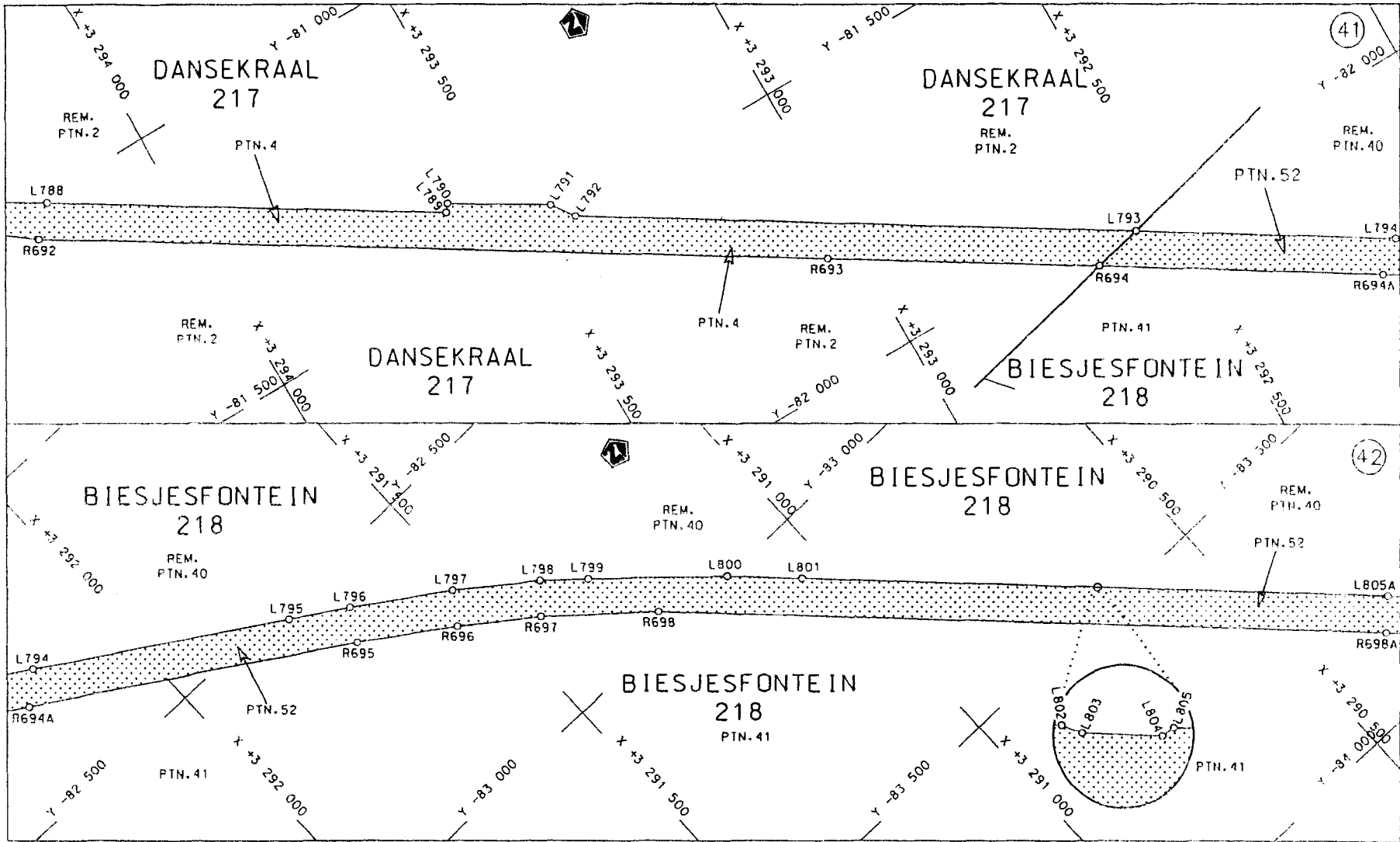
Die Suid Afrikaanse Nasionale Padagentskap Beperk  
The South African National Roads Agency Limited

Die figuur getoon  
The figure shown



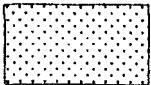
stede padreserwe voor van 'n gedeelte  
represents the road reserve of a portion  
van Nasionale Route N7 Sektie 7  
of National Route N7 Section 7

Vel Sheet 20 van 40  
Plan P633/07



STAATSKOERANT, 8 FEBRUARIE 2008

No. 30743 25

<p>Die Suid Afrikaanse Nasionale Padogentskap Beperk The South African National Roads Agency Limited</p>	<p>Die figuur getoon The figure shown</p>		<p>steld die padreserwe voor van 'n gedeelte represents the road reserve of a portion van Nasionale Roete of National Route</p> <p>N7      Seksie Section      7</p>	<p>Vel Sheet 21 van 40 of</p> <p>Plan P633/07</p>
--	---	---	--	---

D.O.G.A







PADRESERWE KOÖRDINATE				ROAD RESERVE CO-ORDINATES		
LINKERKANT/LEFT HAND SIDE				REGTERKANT/RIGHT HAND SIDE		
	Y	X	WG 17°		Y	X
L1	-92 391.73	3 381	416.45	R1	-92 387.78	3 381 374.96
L2	-92 389.55	3 381	415.65	R2	-92 385.58	3 381 374.61
L3	-92 329.72	3 381	385.64	R3	-92 376.00	3 381 370.64
L4	-92 304.45	3 381	369.42	R4	-92 329.37	3 381 342.01
L5	-92 280.59	3 381	351.86	R5	-92 305.81	3 381 325.19
L6	-92 258.78	3 381	333.47	R6	-92 283.62	3 381 306.23
L7	-92 227.92	3 381	302.49	R7	-92 262.83	3 381 286.03
L8	-92 191.37	3 381	257.12	R8	-92 225.63	3 381 241.28
L9	-92 173.55	3 381	229.30	R9	-92 208.08	3 381 217.77
L10	-92 149.34	3 381	182.30	R10	-92 194.91	3 381 191.85
L11	-92 138.94	3 381	156.22	R11	-92 138.56	3 381 012.65
L12	-92 123.75	3 381	106.46	R12	-92 117.59	3 380 955.65
L13	-92 104.82	3 381	030.27	R13	-92 105.40	3 380 928.21
L14	-92 095.91	3 381	002.51	R14	-92 085.35	3 380 893.76
L15	-92 089.47	3 380	986.76	R15	-92 040.86	3 380 856.64
L16	-92 077.71	3 380	963.44	R16	-92 006.20	3 380 834.66
L17	-92 062.10	3 380	936.77	R17	-91 984.76	3 380 824.37
L18	-92 053.22	3 380	924.10	R18	-91 956.76	3 380 813.04
L19	-92 046.25	3 380	916.99	R19	-91 929.68	3 380 804.12
L20	-92 012.46	3 380	886.21	R20	-91 900.99	3 380 799.09
L21	-91 977.39	3 380	856.91	R21	-91 872.27	3 380 795.37
L22	-91 963.26	3 380	852.16	R22	-91 813.73	3 380 795.12
L23	-91 935.71	3 380	844.21	R23	-91 752.24	3 380 797.69
L24	-91 905.66	3 380	838.24	R24	-91 691.04	3 380 791.21
L25	-91 864.10	3 380	833.75	R25	-91 641.14	3 380 781.16
L26	-91 835.21	3 380	833.52	R26	-91 615.33	3 380 777.19
L27	-91 806.22	3 380	835.26	R27	-91 601.75	3 380 775.10
L28	-91 777.83	3 380	839.43	R28	-91 564.86	3 380 765.01
L29	-91 723.31	3 380	845.65	R29	-91 533.81	3 380 753.71
L30	-91 694.54	3 380	847.04	R30	-91 525.28	3 380 746.83
L31	-91 680.12	3 380	847.21	R31	-91 481.93	3 380 692.40
L32	-91 656.80	3 380	847.08	R32	-91 473.56	3 380 664.90
L33	-91 622.00	3 380	846.88	R33	-91 462.15	3 380 639.62
L34	-91 592.35	3 380	843.03	R34	-91 450.20	3 380 620.95
L35	-91 557.89	3 380	816.59	R35	-91 398.77	3 380 567.10
L36	-91 512.51	3 380	783.94	R36	-91 350.88	3 380 533.10
L37	-91 479.93	3 380	757.65	R37	-91 124.19	3 380 239.86
L38	-91 476.21	3 380	754.15	R38	-91 108.08	3 380 214.25
L39	-91 424.68	3 380	746.46	R39	-91 094.43	3 380 187.90
L40	-91 425.53	3 380	698.50	R40	-91 082.38	3 380 161.04
L41	-91 416.10	3 380	676.53	R41	-91 072.31	3 380 133.05
L42	-91 147.26	3 380	332.27	R42	-91 060.98	3 380 090.71
L43	-91 114.36	3 380	288.21	R43	-91 020.28	3 379 932.18
L44	-91 095.85	3 380	261.29	R44	-90 977.22	3 379 725.70
L45	-91 069.83	3 380	215.78	R45	-90 960.73	3 379 674.19
L46	-91 048.93	3 380	168.47	R46	-90 951.56	3 379 648.56
L47	-91 027.15	3 380	098.71	R47	-90 921.74	3 379 572.73
L48	-90 951.92	3 379	766.58	R48	-90 863.75	3 379 441.78
L49	-90 931.35	3 379	695.92	R49	-90 685.75	3 379 054.00
L50	-90 906.68	3 379	625.21	R50	-90 411.61	3 378 456.55
L51	-90 888.47	3 379	579.61	R51	-90 369.58	3 378 362.51

Vel	24	Van	40	P633/07
Sheet		of		

PADRESERWE KOÖRDINATE				ROAD RESERVE CO-ORDINATES			
LINKERKANT/LEFT HAND SIDE				REGTERKANT/RIGHT HAND SIDE			
	Y	X	WG 17°		Y	X	
L52	-90 847.44	3 379 489.44		R52	-90 358.72	3 378 335.55	
L53	-90 816.02	3 379 493.17		R53	-90 348.53	3 378 308.38	
L54	-90 806.05	3 379 471.53		R54	-90 329.92	3 378 253.22	
L55	-90 823.27	3 379 461.52		R55	-90 309.97	3 378 183.28	
L56	-90 830.09	3 379 451.73		R56	-90 302.88	3 378 154.98	
L57	-90 751.69	3 379 281.39		R57	-90 290.86	3 378 097.96	
L58	-90 676.91	3 379 118.18		R58	-90 285.69	3 378 069.07	
L59	-90 456.34	3 378 637.46		R59	-90 277.44	3 378 011.21	
L60	-90 339.03	3 378 379.15		R60	-90 271.52	3 377 953.24	
L61	-90 302.11	3 378 280.89		R61	-90 267.96	3 377 894.96	
L62	-90 284.62	3 378 223.16		R62	-90 267.29	3 377 861.67	
L63	-90 277.07	3 378 194.51		R63	-90 264.51	3 377 353.42	
L64	-90 263.39	3 378 137.20		R64	-90 262.10	3 376 857.73	
L65	-90 260.06	3 378 121.21		R65	-90 260.26	3 376 492.14	
L66	-90 254.29	3 378 089.75		R66	-90 261.74	3 376 363.66	
L67	-90 250.82	3 378 068.06		R67	-90 264.72	3 376 320.37	
L68	-90 249.59	3 378 060.28		R68	-90 278.10	3 376 190.86	
L69	-90 241.24	3 378 000.75		R69	-90 301.80	3 376 033.51	
L70	-90 233.57	3 377 895.95		R70	-90 366.25	3 375 705.80	
L71	-90 232.38	3 377 820.95		R71	-90 492.18	3 375 064.86	
L72	-90 231.59	3 377 641.88		R72	-90 493.15	3 375 059.93	
L73	-90 229.67	3 377 282.52		R73	-90 507.67	3 374 990.95	
L74	-90 224.03	3 376 743.61		R74	-90 512.61	3 374 971.23	
L75	-90 222.65	3 376 433.71		R75	-90 530.91	3 374 898.08	
L76	-90 225.85	3 376 344.07		R76	-90 538.16	3 374 870.98	
L77	-90 233.16	3 376 254.37		R77	-90 545.39	3 374 845.77	
L78	-90 248.23	3 376 135.68		R78	-90 576.15	3 374 754.17	
L79	-90 258.37	3 376 076.46		R79	-90 605.11	3 374 677.31	
L80	-90 326.12	3 375 730.16		R80	-90 789.68	3 374 183.86	
L81	-90 312.51	3 375 723.34		R81	-90 855.17	3 374 007.31	
L82	-90 299.09	3 375 720.51		R82	-90 872.24	3 373 955.64	
L83	-90 307.39	3 375 696.94		R83	-90 887.77	3 373 903.10	
L84	-90 332.03	3 375 700.53		R84	-90 894.42	3 373 876.58	
L85	-90 336.79	3 375 676.07		R85	-90 903.47	3 373 836.67	
L86	-90 319.08	3 375 672.44		R86	-90 910.58	3 373 800.40	
L87	-90 373.24	3 375 490.76		R87	-90 925.33	3 373 725.26	
L88	-90 455.32	3 375 072.75		R88	-90 938.50	3 373 639.48	
L89	-90 456.64	3 375 066.05		R89	-90 945.01	3 373 582.02	
L90	-90 475.74	3 374 969.98		R90	-90 950.51	3 373 510.31	
L91	-90 479.43	3 374 951.44		R91	-90 953.29	3 373 447.47	
L92	-90 485.97	3 374 922.95		R92	-90 973.91	3 372 502.85	
L93	-90 492.99	3 374 894.85		R93	-90 978.51	3 372 290.69	
L94	-90 508.53	3 374 838.43		R94	-90 984.27	3 372 049.59	
L95	-90 516.90	3 374 810.91		R95	-90 986.04	3 372 020.91	
L96	-90 540.68	3 374 742.00		R96	-90 991.86	3 371 962.49	
L97	-90 633.84	3 374 492.96		R97	-91 000.20	3 371 896.26	
L98	-90 830.73	3 373 960.57		R98	-91 030.57	3 371 746.92	
L99	-90 852.27	3 373 890.87		R99	-91 032.68	3 371 685.98	
L100	-90 874.03	3 373 805.82		R100	-91 032.50	3 371 673.88	
L101	-90 895.97	3 373 691.06		R101	-91 030.79	3 371 647.57	
L102	-90 907.83	3 373 604.08		R102	-91 026.51	3 371 617.15	

Vel	25	Van	40	P633/07
Sheet		of		

PADRESERWE KOÖRDINATE				ROAD RESERVE CO-ORDINATES			
LINKERKANT/LEFT HAND SIDE				REGTERKANT/RIGHT HAND SIDE			
	Y	X	WG 17°		Y	X	
L103	-90 917.10	3 373	488.08	R103	-91 013.66	3 371	560.80
L104	-90 922.45	3 373	266.83	R104	-91 005.21	3 371	534.04
L105	-90 931.92	3 372	837.56	R105	-90 952.60	3 371	410.65
L106	-90 944.21	3 372	289.55	R106	-90 941.53	3 371	383.18
L107	-90 944.07	3 372	202.65	R107	-90 926.52	3 371	340.17
L108	-90 954.87	3 371	983.84	R108	-90 922.41	3 371	328.35
L109	-90 944.13	3 371	925.54	R109	-90 913.67	3 371	298.87
L110	-90 944.14	3 371	910.98	R110	-90 900.01	3 371	241.86
L111	-90 949.75	3 371	893.54	R111	-90 698.23	3 370	215.37
L112	-90 967.65	3 371	837.82	R112	-90 643.49	3 369	929.90
L113	-90 975.39	3 371	813.73	R113	-90 457.54	3 368	701.64
L114	-90 986.44	3 371	763.14	R114	-90 120.85	3 367	781.77
L115	-90 994.16	3 371	704.95	R115	-90 096.04	3 367	716.23
L116	-90 994.44	3 371	671.90	R116	-90 081.78	3 367	682.21
L117	-90 990.81	3 371	647.64	R117	-90 069.89	3 367	655.61
L118	-90 975.27	3 371	589.87	R118	-90 044.48	3 367	603.01
L119	-90 965.43	3 371	562.77	R119	-90 001.43	3 367	525.79
L120	-90 958.65	3 371	549.57	R120	-89 969.25	3 367	475.34
L121	-90 951.01	3 371	538.23	R121	-89 984.99	3 367	463.11
L122	-90 941.81	3 371	525.15	R122	-89 972.89	3 367	442.30
L123	-90 932.03	3 371	511.44	R123	-89 953.86	3 367	454.47
L124	-90 923.99	3 371	454.01	R124	-89 936.15	3 367	429.91
L125	-90 920.83	3 371	439.29	R125	-89 910.92	3 367	396.65
L126	-90 916.89	3 371	426.07	R126	-89 804.46	3 367	254.71
L127	-90 887.82	3 371	343.06	R127	-89 639.26	3 367	034.44
L128	-90 879.34	3 371	314.88	R128	-89 525.00	3 366	881.56
L129	-90 868.64	3 371	272.20	R129	-89 495.96	3 366	835.00
L130	-90 805.15	3 370	956.68	R130	-89 483.48	3 366	808.76
L131	-90 737.38	3 370	612.83	R131	-89 471.25	3 366	776.19
L132	-90 717.13	3 370	494.49	R132	-89 457.02	3 366	723.64
L133	-90 615.28	3 369	975.10	R133	-89 446.36	3 366	547.41
L134	-90 602.96	3 369	902.66	R134	-89 433.48	3 366	468.05
L135	-90 596.90	3 369	865.76	R135	-89 413.70	3 366	431.87
L136	-90 593.79	3 369	845.06	R136	-89 381.71	3 366	388.06
L137	-90 560.48	3 369	621.26	R137	-89 344.60	3 366	348.03
L138	-90 515.21	3 369	336.21	R138	-89 296.27	3 366	300.06
L139	-90 445.07	3 368	861.74	R139	-89 271.95	3 366	268.19
L140	-90 443.32	3 368	852.85	R140	-89 250.74	3 366	233.79
L141	-90 425.91	3 368	765.40	R141	-89 242.81	3 366	207.83
L142	-90 411.65	3 368	708.90	R142	-89 229.65	3 366	140.99
L143	-90 391.58	3 368	641.47	R143	-89 225.12	3 366	113.61
L144	-90 375.72	3 368	595.05	R144	-89 240.01	3 365	925.82
L145	-90 325.33	3 368	457.01	R145	-89 276.54	3 365	695.71
L146	-90 185.78	3 368	073.52	R146	-89 293.29	3 365	634.15
L147	-90 060.70	3 367	730.96	R147	-89 317.80	3 365	586.11
L148	-90 038.03	3 367	677.37	R148	-89 360.00	3 365	502.75
L149	-90 012.88	3 367	625.07	R149	-89 366.14	3 365	475.81
L150	-89 985.15	3 367	574.12	R150	-89 369.22	3 365	381.98
L151	-89 945.35	3 367	508.09	R151	-89 350.83	3 365	319.48
L152	-89 910.48	3 367	529.24	R152	-89 312.99	3 365	243.13
L153	-89 918.87	3 367	513.60	R153	-89 316.90	3 365	223.65

Vel	26	Van	40	P633/07
Sheet		of		

PADRESERWE KOÖRDINATE				ROAD RESERVE CO-ORDINATES			
LINKERKANT/LEFT HAND SIDE				REGTERKANT/RIGHT HAND SIDE			
	Y	X	WG 17°		Y	X	
L154	-89 909.06	3 367	500.34	R154	-89 287.17	3 365	210.60
L155	-89 929.76	3 367	486.23	R155	-89 278.89	3 365	198.49
L156	-89 910.26	3 367	459.19	R156	-89 260.59	3 365	179.56
L157	-89 839.44	3 367	364.68	R157	-89 239.70	3 365	162.92
L158	-89 501.11	3 366	913.18	R158	-89 162.40	3 365	109.82
L159	-89 478.63	3 366	880.76	R159	-89 142.32	3 365	093.25
L160	-89 446.94	3 366	820.49	R160	-89 123.81	3 365	074.78
L161	-89 432.84	3 366	782.10	R161	-89 098.98	3 365	045.86
L162	-89 422.35	3 366	742.37	R162	-88 980.87	3 364	882.58
L163	-89 418.31	3 366	715.19	R163	-88 974.34	3 364	814.01
L164	-89 408.56	3 366	552.32	R164	-88 970.27	3 364	787.60
L165	-89 389.96	3 366	480.39	R165	-88 964.39	3 364	760.85
L166	-89 334.40	3 366	395.75	R166	-88 960.38	3 364	745.29
L167	-89 245.07	3 366	293.04	R167	-88 950.96	3 364	719.86
L168	-89 221.57	3 366	259.77	R168	-88 932.57	3 364	683.70
L169	-89 201.57	3 366	223.99	R169	-88 918.65	3 364	660.56
L170	-89 184.05	3 366	172.41	R170	-88 901.23	3 364	640.23
L171	-89 175.06	3 366	129.13	R171	-88 882.37	3 364	621.49
L172	-89 178.02	3 366	108.64	R172	-88 863.17	3 364	604.61
L173	-89 198.72	3 365	975.32	R173	-88 841.09	3 364	590.85
L174	-89 223.21	3 365	691.47	R174	-88 794.03	3 364	564.28
L175	-89 227.65	3 365	639.97	R175	-88 775.67	3 364	548.26
L176	-89 233.92	3 365	620.46	R176	-88 617.37	3 364	517.78
L177	-89 239.13	3 365	612.02	R177	-88 564.87	3 364	504.43
L178	-89 301.13	3 365	511.46	R178	-88 520.41	3 364	489.06
L179	-89 312.43	3 365	489.56	R179	-88 483.08	3 364	470.26
L180	-89 320.62	3 365	464.48	R180	-88 473.39	3 364	463.83
L181	-89 325.20	3 365	438.00	R181	-88 449.34	3 364	447.87
L182	-89 320.71	3 365	411.24	R182	-88 427.43	3 364	429.86
L183	-89 320.53	3 365	384.38	R183	-88 407.52	3 364	410.70
L184	-89 310.78	3 365	331.35	R184	-88 389.43	3 364	390.04
L185	-89 305.15	3 365	307.64	R185	-88 356.32	3 364	345.91
L186	-89 301.69	3 365	299.54	R186	-88 153.11	3 364	040.80
L187	-89 294.19	3 365	282.00	R187	-88 005.46	3 363	818.43
L188	-89 279.04	3 365	259.27	R188	-87 974.54	3 363	773.09
L189	-89 262.10	3 365	241.49	R189	-87 930.60	3 363	713.56
L190	-89 152.15	3 365	157.81	R190	-87 875.80	3 363	648.76
L191	-89 130.50	3 365	141.75	R191	-87 800.83	3 363	571.31
L192	-89 125.22	3 365	138.29	R192	-87 687.00	3 363	463.72
L193	-89 034.54	3 365	097.82	R193	-87 660.21	3 363	438.62
L194	-88 999.76	3 365	056.27	R194	-87 556.83	3 363	341.88
L195	-88 993.43	3 365	046.33	R195	-87 473.99	3 363	263.82
L196	-88 973.60	3 365	010.37	R196	-87 459.27	3 363	245.10
L197	-88 966.20	3 364	990.28	R197	-87 295.16	3 363	089.15
L198	-88 956.76	3 364	960.47	R198	-87 261.22	3 363	060.54
L199	-88 949.70	3 364	929.22	R199	-87 223.65	3 363	027.95
L200	-88 924.19	3 364	756.15	R200	-86 944.57	3 362	765.00
L201	-88 919.38	3 364	743.61	R201	-86 895.24	3 362	708.25
L202	-88 908.64	3 364	721.33	R202	-86 844.05	3 362	637.69
L203	-88 890.85	3 364	692.51	R203	-86 785.59	3 362	534.23
L204	-88 877.75	3 364	674.18	R204	-86 748.18	3 362	445.08

Van	27	Van	40	P633/07
Sheet		of		

PADRESERWE KOÖRDINATE				ROAD RESERVE CO-ORDINATES			
LINKERKANT/LEFT HAND SIDE				REGTERKANT/RIGHT HAND SIDE			
	Y	X	WG 17°		Y	X	
L205	-88 860.95	3 364	652.90	R205	-86 635.67	3 362	039.14
L206	-88 841.42	3 364	634.14	R206	-86 590.37	3 361	871.48
L207	-88 819.19	3 364	617.73	R207	-86 624.13	3 361	490.30
L208	-88 784.38	3 364	600.69	R208	-86 513.40	3 361	565.37
L209	-88 745.81	3 364	587.04	R209	-86 433.60	3 361	331.49
L210	-88 650.33	3 364	564.43	R210	-86 331.12	3 361	109.41
L211	-88 525.97	3 364	534.79	R211	-86 291.48	3 361	035.98
L212	-88 503.68	3 364	524.11	R212	-86 183.46	3 360	857.35
L213	-88 439.21	3 364	493.26	R213	-85 907.15	3 360	405.74
L214	-88 373.24	3 364	432.97	R214	-85 830.32	3 360	279.26
L215	-88 319.51	3 364	361.53	R215	-85 714.27	3 360	088.37
L216	-88 252.85	3 364	259.91	R216	-85 647.42	3 359	943.93
L217	-87 951.89	3 363	808.22	R217	-85 614.45	3 359	825.45
L218	-87 907.90	3 363	748.83	R218	-85 576.62	3 359	570.25
L219	-87 876.12	3 363	709.32	R219	-85 472.83	3 358	823.68
L220	-87 841.93	3 363	669.80	R220	-85 440.86	3 358	429.65
L221	-87 811.80	3 363	637.22	R221	-85 440.89	3 358	429.22
L222	-87 760.34	3 363	585.47	R222	-85 441.29	3 358	424.52
L223	-87 261.27	3 363	115.92	R223	-85 453.06	3 358	282.36
L224	-86 952.50	3 362	827.08	R224	-85 509.21	3 357	910.22
L225	-86 931.25	3 362	806.13	R225	-85 570.90	3 357	504.86
L226	-86 890.94	3 362	762.51	R226	-85 590.56	3 357	485.26
L227	-86 853.36	3 362	716.39	R227	-85 592.27	3 357	472.25
L228	-86 818.72	3 362	669.21	R228	-85 579.99	3 357	444.97
L229	-86 787.13	3 362	618.67	R229	-85 681.24	3 356	777.53
L230	-86 758.83	3 362	566.01	R230	-85 729.20	3 356	461.52
L231	-86 734.03	3 362	513.30	R231	-85 747.54	3 356	341.02
L232	-86 707.37	3 362	443.55	R232	-85 844.56	3 355	702.15
L233	-86 682.48	3 362	357.64	R233	-85 845.13	3 355	702.28
L234	-86 507.08	3 361	709.14	R234	-85 878.06	3 355	480.30
L235	-86 478.69	3 361	683.91	R235	-85 911.84	3 355	296.87
L236	-86 473.62	3 361	666.98	R236	-85 979.28	3 354	761.72
L237	-86 475.52	3 361	606.71	R237	-85 999.21	3 354	517.22
L238	-86 393.39	3 361	344.53	R238	-86 054.80	3 353	646.80
L239	-86 367.43	3 361	276.23	R239	-86 057.32	3 353	606.41
L240	-86 351.37	3 361	240.28	R240	-86 076.39	3 353	303.62
L241	-86 319.56	3 361	171.52	R241	-86 081.95	3 353	245.35
L242	-86 291.09	3 361	115.96	R242	-86 110.07	3 353	056.92
L243	-86 272.59	3 361	081.35	R243	-86 127.83	3 352	973.81
L244	-86 235.64	3 361	015.56	R244	-86 142.45	3 352	915.84
L245	-86 150.63	3 360	877.31	R245	-86 156.09	3 352	867.49
L246	-85 875.86	3 360	426.83	R246	-86 174.19	3 352	872.12
L247	-85 768.26	3 360	318.04	R247	-86 181.13	3 352	848.68
L248	-85 673.72	3 360	094.12	R248	-86 163.20	3 352	843.70
L249	-85 628.71	3 360	004.79	R249	-86 184.89	3 352	776.10
L250	-85 597.50	3 359	917.46	R250	-86 200.26	3 352	733.02
L251	-85 581.45	3 359	856.89	R251	-86 254.51	3 352	591.12
L252	-85 552.46	3 359	715.95	R252	-86 271.08	3 352	540.68
L253	-85 545.55	3 359	626.12	R253	-86 278.69	3 352	514.41
L254	-85 435.79	3 358	835.59	R254	-86 282.18	3 352	501.10
L255	-85 414.26	3 358	681.93	R255	-86 288.54	3 352	474.67

Vel	28	Van	40	P633/07
Sheet		of		

PADRESERWE KOÖRDINATE				/ ROAD RESERVE CO-ORDINATES		
LINKERKANT/LEFT HAND SIDE				REGTERKANT/RIGHT HAND SIDE		
	Y	X	WG 17°		Y	X
L256	-85 407.99	3 358	626.10	R256	-86 294.42	3 352 447.83
L257	-85 402.94	3 358	555.50	R257	-86 301.35	3 352 407.95
L258	-85 401.31	3 358	498.03	R258	-86 304.07	3 352 387.24
L259	-85 402.49	3 358	429.69	R259	-86 308.15	3 352 353.75
L260	-85 404.90	3 358	376.08	R260	-86 310.16	3 352 326.79
L261	-85 409.67	3 358	322.32	R261	-86 311.69	3 352 294.35
L262	-85 416.52	3 358	269.20	R262	-86 312.38	3 352 253.38
L263	-85 467.00	3 357	933.20	R263	-86 299.13	3 351 622.16
L264	-85 533.78	3 357	496.20	R264	-86 298.23	3 351 536.33
L265	-85 527.56	3 357	475.07	R265	-86 266.82	3 349 870.17
L266	-85 529.51	3 357	462.78	R266	-86 257.09	3 349 357.41
L267	-85 542.13	3 357	439.64	R267	-86 236.59	3 348 276.28
L268	-85 624.62	3 356	897.80	R268	-86 227.86	3 347 803.78
L269	-85 709.83	3 356	336.29	R269	-86 210.73	3 346 911.55
L270	-85 840.95	3 355	472.69	R270	-86 222.19	3 346 899.29
L271	-85 924.54	3 354	908.48	R271	-86 252.78	3 346 898.48
L272	-85 936.24	3 354	806.26	R272	-86 255.15	3 346 869.99
L273	-85 961.31	3 354	516.97	R273	-86 209.92	3 346 871.72
L274	-86 019.12	3 353	612.40	R274	-86 203.84	3 346 554.22
L275	-86 020.68	3 353	588.84	R275	-86 202.49	3 346 469.14
L276	-86 021.44	3 353	577.34	R276	-86 203.52	3 346 401.13
L277	-86 031.90	3 353	410.45	R277	-86 206.46	3 346 346.66
L278	-86 064.10	3 353	097.69	R278	-86 210.39	3 346 305.94
L279	-86 070.67	3 353	061.74	R279	-86 217.87	3 346 251.70
L280	-86 081.85	3 353	005.51	R280	-86 290.50	3 345 895.47
L281	-86 100.72	3 352	925.55	R281	-86 338.04	3 345 670.64
L282	-86 107.73	3 352	899.09	R282	-86 350.37	3 345 617.53
L283	-86 119.26	3 352	857.71	R283	-86 357.43	3 345 590.76
L284	-86 101.32	3 352	853.01	R284	-86 365.06	3 345 564.17
L285	-86 107.88	3 352	831.30	R285	-86 382.62	3 345 514.31
L286	-86 117.02	3 352	831.87	R286	-86 395.88	3 345 482.29
L287	-86 126.42	3 352	834.40	R287	-86 418.51	3 345 436.67
L288	-86 143.24	3 352	780.70	R288	-86 438.16	3 345 401.13
L289	-86 168.04	3 352	710.82	R289	-86 452.39	3 345 377.81
L290	-86 224.87	3 352	561.32	R290	-86 466.95	3 345 354.79
L291	-86 239.70	3 352	514.52	R291	-86 482.18	3 345 332.55
L292	-86 245.37	3 352	493.69	R292	-86 514.96	3 345 289.57
L293	-86 253.79	3 352	458.10	R293	-86 559.47	3 345 238.38
L294	-86 259.38	3 352	431.13	R294	-86 578.44	3 345 218.74
L295	-86 263.85	3 352	404.17	R295	-86 704.80	3 345 114.49
L296	-86 269.35	3 352	363.37	R296	-86 841.01	3 345 009.88
L297	-86 271.78	3 352	336.25	R297	-87 126.00	3 344 791.01
L298	-86 273.42	3 352	307.20	R298	-87 136.52	3 344 782.21
L299	-86 272.85	3 352	169.69	R299	-87 156.99	3 344 764.11
L300	-86 247.62	3 350	862.38	R300	-87 177.26	3 344 745.68
L301	-86 230.29	3 349	937.37	R301	-87 197.37	3 344 726.68
L302	-86 219.31	3 349	356.34	R302	-87 216.74	3 344 707.51
L303	-86 210.79	3 348	913.43	R303	-87 235.42	3 344 687.68
L304	-86 201.26	3 348	406.68	R304	-87 253.74	3 344 667.21
L305	-86 199.27	3 348	292.18	R305	-87 288.59	3 344 624.85
L306	-86 172.70	3 346	902.45	R306	-87 316.87	3 344 584.88

Vel	29	Van	40	P633/07
Sheet		of		

PADRESERWE KOÖRDINATE				ROAD RESERVE CO-ORDINATES			
LINKERKANT/LEFT HAND SIDE				REGTERKANT/RIGHT HAND SIDE			
	Y	X	WG 17°		Y	X	
L307	-86 127.03	3 346	903.47	R307	-87 456.52	3 344	368.92
L308	-86 131.05	3 346	878.89	R308	-87 643.39	3 344	076.88
L309	-86 172.18	3 346	878.02	R309	-87 662.74	3 344	052.35
L310	-86 164.86	3 346	492.69	R310	-87 681.58	3 344	032.21
L311	-86 164.78	3 346	465.02	R311	-87 701.33	3 344	013.45
L312	-86 164.99	3 346	437.99	R312	-87 721.81	3 343	995.63
L313	-86 165.70	3 346	410.34	R313	-87 743.50	3 343	978.93
L314	-86 168.40	3 346	355.80	R314	-87 766.61	3 343	963.42
L315	-86 170.61	3 346	324.81	R315	-87 789.63	3 343	949.40
L316	-86 176.10	3 346	272.84	R316	-87 813.78	3 343	936.77
L317	-86 179.71	3 346	245.74	R317	-87 838.50	3 343	925.35
L318	-86 183.74	3 346	218.52	R318	-87 864.20	3 343	915.42
L319	-86 188.41	3 346	191.54	R319	-87 890.44	3 343	907.45
L320	-86 196.17	3 346	150.76	R320	-87 917.19	3 343	901.39
L321	-86 297.18	3 345	665.76	R321	-87 944.15	3 343	896.49
L322	-86 300.36	3 345	650.90	R322	-87 971.25	3 343	892.45
L323	-86 306.98	3 345	623.62	R323	-87 998.65	3 343	890.65
L324	-86 314.07	3 345	597.19	R324	-88 026.11	3 343	890.35
L325	-86 326.10	3 345	557.90	R325	-88 053.44	3 343	891.62
L326	-86 335.07	3 345	532.06	R326	-88 080.85	3 343	894.79
L327	-86 345.34	3 345	505.22	R327	-88 107.61	3 343	899.46
L328	-86 364.59	3 345	458.84	R328	-88 134.01	3 343	905.25
L329	-86 370.47	3 345	446.26	R329	-88 160.71	3 343	912.58
L330	-86 376.43	3 345	434.14	R330	-88 253.30	3 343	939.80
L331	-86 389.17	3 345	409.72	R331	-88 277.78	3 343	945.61
L332	-86 402.37	3 345	385.85	R332	-88 331.39	3 343	957.60
L333	-86 409.21	3 345	374.05	R333	-88 382.53	3 343	964.68
L334	-86 423.58	3 345	350.86	R334	-88 412.96	3 343	968.23
L335	-86 438.54	3 345	327.98	R335	-88 440.48	3 343	969.40
L336	-86 460.14	3 345	297.11	R336	-88 470.61	3 343	969.33
L337	-86 476.53	3 345	275.37	R337	-88 481.22	3 343	968.46
L338	-86 493.66	3 345	254.08	R338	-88 535.15	3 343	960.54
L339	-86 511.28	3 345	233.02	R339	-88 577.79	3 343	950.53
L340	-86 529.51	3 345	212.72	R340	-88 617.11	3 343	939.89
L341	-86 538.95	3 345	202.67	R341	-88 643.07	3 343	932.12
L342	-86 550.91	3 345	190.75	R342	-88 669.00	3 343	922.80
L343	-86 573.21	3 345	169.83	R343	-88 799.59	3 343	864.58
L344	-86 614.18	3 345	134.60	R344	-88 964.49	3 343	791.73
L345	-86 624.61	3 345	126.02	R345	-89 123.17	3 343	713.00
L346	-86 799.22	3 344	991.97	R346	-89 378.52	3 343	582.76
L347	-87 082.85	3 344	773.87	R347	-89 434.45	3 343	548.51
L348	-87 124.00	3 344	739.72	R348	-89 530.82	3 343	468.47
L349	-87 153.63	3 344	712.55	R349	-89 591.93	3 343	387.11
L350	-87 182.05	3 344	684.40	R350	-89 613.31	3 343	355.05
L351	-87 209.66	3 344	655.13	R351	-89 695.10	3 343	194.96
L352	-87 218.18	3 344	645.06	R352	-89 721.22	3 343	178.72
L353	-87 234.50	3 344	624.16	R353	-89 734.68	3 343	145.38
L354	-87 427.45	3 344	328.46	R354	-89 719.50	3 343	147.80
L355	-87 430.89	3 344	323.38	R355	-89 729.09	3 343	010.64
L356	-87 433.96	3 344	318.86	R356	-89 719.48	3 342	916.23
L357	-87 440.35	3 344	304.63	R357	-89 540.85	3 341	963.75

Vel	30	Van	40	P633/07
Sheet		of		

PADRESERWE KOÖRDINATE				ROAD RESERVE CO-ORDINATES			
LINKERKANT/LEFT HAND SIDE				REGTERKANT/RIGHT HAND SIDE			
	Y	X	WG 17°		Y	X	
L358	-87 494.37	3 344	222.93	R358	-89 408.65	3 341	261.90
L359	-87 511.06	3 344	197.71	R359	-89 349.93	3 340	845.25
L360	-87 595.82	3 344	069.92	R360	-89 352.75	3 340	790.77
L361	-87 620.51	3 344	037.40	R361	-89 368.57	3 340	685.00
L362	-87 638.36	3 344	017.71	R362	-89 378.06	3 340	645.87
L363	-87 658.67	3 343	999.26	R363	-89 384.98	3 340	619.43
L364	-87 680.51	3 343	980.52	R364	-89 411.81	3 340	542.49
L365	-87 699.81	3 343	964.32	R365	-89 420.84	3 340	519.33
L366	-87 720.24	3 343	947.69	R366	-89 429.76	3 340	496.50
L367	-87 742.53	3 343	932.76	R367	-89 427.64	3 340	429.72
L368	-87 765.97	3 343	919.47	R368	-89 435.82	3 340	402.31
L369	-87 801.43	3 343	900.14	R369	-89 475.81	3 340	331.69
L370	-87 825.68	3 343	887.77	R370	-89 471.79	3 340	313.61
L371	-87 850.18	3 343	877.86	R371	-89 494.79	3 340	262.64
L372	-87 876.50	3 343	869.73	R372	-89 510.69	3 340	241.15
L373	-87 902.39	3 343	862.99	R373	-89 570.52	3 340	106.59
L374	-87 929.11	3 343	858.07	R374	-89 584.19	3 340	033.13
L375	-87 979.70	3 343	853.85	R375	-89 591.26	3 339	974.64
L376	-88 007.10	3 343	852.94	R376	-89 595.38	3 339	912.21
L377	-88 034.16	3 343	853.71	R377	-89 601.84	3 339	779.69
L378	-88 061.25	3 343	855.01	R378	-89 608.27	3 339	638.15
L379	-88 079.01	3 343	856.39	R379	-89 642.43	3 338	920.65
L380	-88 115.36	3 343	862.25	R380	-89 648.74	3 338	794.78
L381	-88 141.66	3 343	867.49	R381	-89 653.14	3 338	746.52
L382	-88 168.11	3 343	874.05	R382	-89 656.13	3 338	626.09
L383	-88 194.18	3 343	881.53	R383	-89 663.56	3 338	438.98
L384	-88 272.20	3 343	904.95	R384	-89 671.42	3 338	206.07
L385	-88 337.03	3 343	921.66	R385	-89 628.88	3 338	091.25
L386	-88 369.88	3 343	926.32	R386	-89 589.60	3 337	919.48
L387	-88 410.15	3 343	927.28	R387	-89 584.47	3 337	892.34
L388	-88 477.60	3 343	924.29	R388	-89 583.06	3 337	878.92
L389	-88 531.65	3 343	919.20	R389	-89 581.23	3 337	851.68
L390	-88 571.22	3 343	913.03	R390	-89 580.57	3 337	812.52
L391	-88 606.55	3 343	903.52	R391	-89 580.91	3 337	798.86
L392	-88 632.81	3 343	895.03	R392	-89 584.52	3 337	772.02
L393	-88 657.98	3 343	885.14	R393	-89 586.96	3 337	759.00
L394	-88 683.29	3 343	874.65	R394	-89 608.67	3 337	697.13
L395	-88 944.23	3 343	749.57	R395	-89 653.13	3 337	654.78
L396	-89 102.70	3 343	674.37	R396	-89 650.68	3 337	632.75
L397	-89 241.22	3 343	608.52	R397	-89 677.73	3 337	580.35
L398	-89 351.80	3 343	554.87	R398	-89 682.34	3 337	572.66
L399	-89 373.96	3 343	541.85	R399	-89 328.64	3 336	601.35
L400	-89 398.54	3 343	527.03	R400	-89 328.60	3 336	596.43
L401	-89 456.70	3 343	484.06	R401	-89 344.47	3 336	599.44
L402	-89 482.69	3 343	462.96	R402	-89 351.99	3 336	583.41
L403	-89 501.30	3 343	443.12	R403	-89 430.32	3 336	292.17
L404	-89 560.75	3 343	369.25	R404	-89 455.38	3 336	185.93
L405	-89 583.05	3 343	334.70	R405	-89 461.15	3 336	160.54
L406	-89 602.95	3 343	298.67	R406	-89 465.64	3 336	140.84
L407	-89 614.90	3 343	273.94	R407	-89 533.59	3 335	842.60
L408	-89 634.15	3 343	224.38	R408	-89 558.22	3 335	735.84

Vel	31	Van	40	P633/07
Sheet		of		



PADRESERWE KOÖRDINATE				ROAD RESERVE CO-ORDINATES			
LINKERKANT/LEFT HAND SIDE				REGTERKANT/RIGHT HAND SIDE			
	Y	X	WG 17°		Y	X	
L409	-89 647.21	3 343	182.06	R409	-89 575.40	3 335	671.26
L410	-89 615.50	3 343	174.20	R410	-89 604.51	3 335	520.38
L411	-89 624.78	3 343	151.56	R411	-89 610.32	3 335	466.12
L412	-89 652.98	3 343	158.15	R412	-89 613.48	3 335	424.87
L413	-89 658.42	3 343	130.01	R413	-89 608.88	3 335	344.63
L414	-89 663.96	3 343	089.50	R414	-89 599.58	3 335	262.92
L415	-89 665.62	3 343	062.61	R415	-89 588.09	3 335	217.44
L416	-89 666.34	3 343	035.01	R416	-89 565.74	3 335	138.95
L417	-89 665.90	3 343	007.43	R417	-89 545.17	3 335	091.91
L418	-89 664.32	3 342	980.28	R418	-89 521.75	3 335	042.37
L419	-89 656.37	3 342	923.64	R419	-89 440.69	3 334	884.29
L420	-89 571.77	3 342	472.29	R420	-89 371.54	3 334	799.20
L421	-89 486.43	3 342	019.10	R421	-89 343.87	3 334	754.17
L422	-89 424.82	3 341	690.59	R422	-89 317.28	3 334	707.56
L423	-89 416.41	3 341	668.71	R423	-89 293.25	3 334	655.01
L424	-89 420.01	3 341	665.00	R424	-89 164.61	3 334	402.31
L425	-89 340.96	3 341	244.21	R425	-89 132.27	3 334	331.98
L426	-89 292.89	3 340	975.56	R426	-89 091.47	3 334	243.26
L427	-89 288.98	3 340	934.41	R427	-89 085.41	3 334	216.90
L428	-89 287.29	3 340	908.05	R428	-89 022.40	3 334	071.19
L429	-89 286.49	3 340	878.55	R429	-88 919.81	3 333	870.90
L430	-89 286.56	3 340	850.24	R430	-88 894.01	3 333	822.61
L431	-89 287.53	3 340	823.75	R431	-88 878.22	3 333	794.19
L432	-89 290.02	3 340	782.60	R432	-88 798.00	3 333	658.36
L433	-89 293.00	3 340	755.37	R433	-88 720.38	3 333	539.47
L434	-89 296.68	3 340	727.82	R434	-88 676.82	3 333	476.45
L435	-89 300.83	3 340	701.00	R435	-88 626.27	3 333	404.52
L436	-89 318.94	3 340	593.23	R436	-88 566.80	3 333	325.79
L437	-89 323.67	3 340	572.27	R437	-88 526.02	3 333	274.40
L438	-89 364.89	3 340	482.32	R438	-88 484.28	3 333	223.77
L439	-89 384.99	3 340	438.75	R439	-88 455.80	3 333	190.36
L440	-89 410.94	3 340	373.61	R440	-88 427.21	3 333	157.46
L441	-89 455.72	3 340	258.69	R441	-88 278.29	3 332	985.62
L442	-89 462.75	3 340	250.41	R442	-88 261.16	3 332	964.32
L443	-89 475.14	3 340	228.92	R443	-88 244.69	3 332	943.23
L444	-89 474.97	3 340	205.33	R444	-88 172.77	3 332	842.35
L445	-89 494.05	3 340	140.31	R445	-88 142.96	3 332	796.25
L446	-89 500.64	3 340	113.70	R446	-88 124.45	3 332	766.57
L447	-89 506.91	3 340	086.96	R447	-88 083.12	3 332	696.11
L448	-89 512.39	3 340	060.16	R448	-88 069.91	3 332	672.35
L449	-89 517.27	3 340	033.40	R449	-88 044.54	3 332	624.13
L450	-89 523.66	3 339	993.92	R450	-88 032.42	3 332	599.72
L451	-89 526.48	3 339	970.69	R451	-88 020.48	3 332	574.93
L452	-89 531.47	3 339	916.08	R452	-87 997.80	3 332	525.29
L453	-89 534.40	3 339	874.84	R453	-87 986.77	3 332	500.29
L454	-89 545.91	3 339	628.45	R454	-87 976.21	3 332	475.22
L455	-89 568.37	3 339	163.14	R455	-87 965.95	3 332	449.99
L456	-89 579.13	3 338	937.96	R456	-87 955.97	3 332	424.55
L457	-89 581.76	3 338	809.98	R457	-87 931.32	3 332	357.98
L458	-89 582.57	3 338	662.88	R458	-87 910.43	3 332	292.89
L459	-89 582.59	3 338	637.20	R459	-87 902.31	3 332	266.67

Vel	32	Van	40	P633/07
Sheet		of		

PADRESERWE KOÖRDINATE				ROAD RESERVE CO-ORDINATES			
LINKERKANT/LEFT HAND SIDE				REGTERKANT/RIGHT HAND SIDE			
	Y	X	WG 17°		Y	X	
L460	-89 598.94	3 338	522.77	R460	-87 749.54	3 331	740.00
L461	-89 606.21	3 338	437.68	R461	-87 777.30	3 331	731.89
L462	-89 602.78	3 338	433.07	R462	-87 770.37	3 331	708.47
L463	-89 610.26	3 338	325.08	R463	-87 742.55	3 331	716.31
L464	-89 609.29	3 338	284.29	R464	-87 609.10	3 331	258.69
L465	-89 607.01	3 338	229.26	R465	-87 481.00	3 330	818.75
L466	-89 605.83	3 338	194.95	R466	-87 229.30	3 329	958.91
L467	-89 602.42	3 338	154.37	R467	-87 184.35	3 329	806.34
L468	-89 595.15	3 338	114.15	R468	-87 167.47	3 329	745.88
L469	-89 585.48	3 338	074.96	R469	-87 070.18	3 329	408.52
L470	-89 564.62	3 337	997.84	R470	-86 995.95	3 329	130.13
L471	-89 556.45	3 337	972.88	R471	-86 987.27	3 329	076.63
L472	-89 549.36	3 337	961.28	R472	-86 963.06	3 328	966.21
L473	-89 534.63	3 337	938.15	R473	-86 811.48	3 328	109.38
L474	-89 528.83	3 337	865.59	R474	-86 782.02	3 327	939.19
L475	-89 533.05	3 337	837.41	R475	-86 732.37	3 327	808.68
L476	-89 540.80	3 337	801.65	R476	-86 678.57	3 327	501.07
L477	-89 560.80	3 337	722.79	R477	-86 676.44	3 327	345.19
L478	-89 574.12	3 337	684.13	R478	-86 643.35	3 327	229.34
L479	-89 592.20	3 337	646.37	R479	-86 445.96	3 326	694.22
L480	-89 605.86	3 337	622.58	R480	-86 324.54	3 326	382.85
L481	-89 653.00	3 337	550.33	R481	-86 368.69	3 326	364.72
L482	-89 297.70	3 336	596.72	R482	-86 360.14	3 326	342.30
L483	-89 299.68	3 336	582.48	R483	-86 315.71	3 326	360.07
L484	-89 345.22	3 336	378.03	R484	-86 277.74	3 326	258.33
L485	-89 363.95	3 336	265.31	R485	-86 137.67	3 325	902.44
L486	-89 391.85	3 336	181.28	R486	-85 997.09	3 325	515.40
L487	-89 403.93	3 336	126.94	R487	-85 863.71	3 325	163.31
L488	-89 439.42	3 335	969.49	R488	-85 837.44	3 325	095.06
L489	-89 461.02	3 335	887.50	R489	-85 783.65	3 324	949.81
L490	-89 482.65	3 335	782.04	R490	-85 730.00	3 324	742.28
L491	-89 495.28	3 335	712.55	R491	-85 724.18	3 324	703.73
L492	-89 536.76	3 335	549.11	R492	-85 716.36	3 324	652.40
L493	-89 548.90	3 335	434.41	R493	-85 706.26	3 324	531.54
L494	-89 546.20	3 335	348.15	R494	-85 705.85	3 324	440.50
L495	-89 542.26	3 335	312.08	R495	-85 717.81	3 324	430.03
L496	-89 537.89	3 335	284.98	R496	-85 715.38	3 324	404.22
L497	-89 532.64	3 335	258.22	R497	-85 708.36	3 324	367.76
L498	-89 529.97	3 335	245.86	R498	-85 716.38	3 324	176.82
L499	-89 519.77	3 335	207.86	R499	-85 718.79	3 324	152.58
L500	-89 511.84	3 335	181.68	R500	-85 720.77	3 324	052.17
L501	-89 507.42	3 335	168.56	R501	-85 719.48	3 324	012.50
L502	-89 487.29	3 335	115.90	R502	-85 714.43	3 323	950.51
L503	-89 481.46	3 335	102.92	R503	-85 697.88	3 323	895.20
L504	-89 470.31	3 335	079.66	R504	-85 646.95	3 323	752.31
L505	-89 318.93	3 334	786.04	R505	-85 612.04	3 323	665.20
L506	-89 108.70	3 334	381.45	R506	-85 575.15	3 323	609.90
L507	-89 058.12	3 334	291.53	R507	-85 493.35	3 323	490.81
L508	-89 000.39	3 334	166.58	R508	-85 373.74	3 323	336.89
L509	-88 953.81	3 334	076.26	R509	-85 347.69	3 323	303.05
L510	-88 930.42	3 334	037.73	R510	-85 211.50	3 323	138.07

Vel	33	Van	40	P633/07
Sheet		of		

PADRESERWE KOÖRDINATE				ROAD RESERVE CO-ORDINATES			
LINKERKANT/LEFT HAND SIDE				REGTERKANT/RIGHT HAND SIDE			
	Y	X	WG 17°		Y	X	
L511	-88 911.57	3 333	986.23	R511	-85 170.33	3 323	090.88
L512	-88 766.41	3 333	728.68	R512	-85 140.02	3 323	050.23
L513	-88 725.91	3 333	664.30	R513	-85 118.25	3 323	026.14
L514	-88 685.23	3 333	601.34	R514	-85 036.43	3 322	898.96
L515	-88 666.66	3 333	573.94	R515	-85 000.24	3 322	805.23
L516	-88 608.38	3 333	494.57	R516	-84 937.52	3 322	620.89
L517	-88 588.83	3 333	466.43	R517	-84 931.87	3 322	565.76
L518	-88 578.22	3 333	446.97	R518	-84 936.06	3 322	465.76
L519	-88 460.43	3 333	294.28	R519	-84 947.15	3 322	401.52
L520	-88 339.32	3 333	153.89	R520	-84 977.62	3 322	279.15
L521	-88 275.71	3 333	081.94	R521	-84 992.78	3 322	218.27
L522	-88 240.56	3 333	040.08	R522	-85 004.95	3 322	165.24
L523	-88 206.45	3 332	997.28	R523	-85 021.78	3 322	032.05
L524	-88 173.28	3 332	953.42	R524	-85 008.57	3 321	907.00
L525	-88 126.07	3 332	887.04	R525	-84 964.40	3 321	770.09
L526	-88 095.95	3 332	841.19	R526	-84 953.92	3 321	728.24
L527	-88 056.66	3 332	777.76	R527	-84 937.94	3 321	664.40
L528	-88 029.32	3 332	730.51	R528	-84 885.17	3 321	476.12
L529	-88 016.10	3 332	706.66	R529	-84 850.32	3 321	360.39
L530	-87 990.50	3 332	658.40	R530	-84 772.82	3 321	146.43
L531	-87 966.28	3 332	609.50	R531	-84 701.28	3 321	023.49
L532	-87 954.40	3 332	584.42	R532	-84 656.65	3 320	885.10
L533	-87 932.19	3 332	534.68	R533	-84 620.62	3 320	742.76
L534	-87 921.44	3 332	509.59	R534	-84 582.87	3 320	641.44
L535	-87 910.97	3 332	484.20	R535	-84 590.91	3 320	555.72
L536	-87 900.85	3 332	458.79	R536	-84 559.71	3 320	365.34
L537	-87 881.70	3 332	407.71	R537	-84 541.70	3 320	142.04
L538	-87 872.72	3 332	381.93	R538	-84 517.93	3 319	813.70
L539	-87 848.52	3 332	307.26	R539	-84 487.26	3 319	771.58
L540	-87 755.23	3 331	988.37	R540	-84 489.79	3 319	735.31
L541	-87 690.44	3 331	766.27	R541	-84 487.89	3 319	685.01
L542	-87 659.03	3 331	763.21	R542	-84 504.31	3 319	512.57
L543	-87 651.61	3 331	749.24	R543	-84 529.28	3 319	486.09
L544	-87 677.83	3 331	723.25	R544	-84 545.66	3 319	417.46
L545	-87 547.98	3 331	276.08	R545	-84 573.95	3 319	342.65
L546	-87 309.36	3 330	456.23	R546	-84 626.92	3 319	259.71
L547	-87 305.93	3 330	442.85	R547	-84 658.12	3 319	216.07
L548	-87 303.30	3 330	429.56	R548	-84 712.55	3 319	150.81
L549	-87 301.19	3 330	416.69	R549	-84 855.12	3 319	035.74
L550	-87 297.61	3 330	402.41	R550	-85 839.66	3 318	411.91
L551	-87 293.26	3 330	389.50	R551	-85 860.06	3 318	422.56
L552	-87 283.02	3 330	364.37	R552	-85 885.01	3 318	382.88
L553	-87 278.65	3 330	351.40	R553	-86 702.10	3 317	864.70
L554	-87 189.14	3 330	042.13	R554	-86 833.29	3 317	781.45
L555	-87 163.66	3 329	955.70	R555	-86 935.66	3 317	707.50
L556	-87 039.05	3 329	551.31	R556	-87 045.88	3 317	598.91
L557	-87 030.39	3 329	525.70	R557	-87 078.56	3 317	560.54
L558	-87 027.12	3 329	512.53	R558	-87 152.51	3 317	452.36
L559	-87 017.74	3 329	458.33	R559	-87 257.82	3 317	193.51
L560	-87 011.57	3 329	432.20	R560	-87 279.21	3 317	046.66
L561	-86 993.05	3 329	366.61	R561	-87 279.45	3 317	025.34

Vel 34 Van 40  
Sheet of

P633/07

PADRESERWE KOÖRDINATE				/	ROAD RESERVE CO-ORDINATES			
LINKERKANT/LEFT HAND SIDE					REGTERKANT/RIGHT HAND SIDE			
	Y	X	WG	17°	Y	X		
L562	-86 979.09	3 329	314.10	R562	-87 279.75	3 316	997.40	
L563	-86 963.55	3 329	261.97	R563	-87 281.68	3 316	926.33	
L564	-86 956.65	3 329	235.61	R564	-87 273.07	3 316	839.93	
L565	-86 946.88	3 329	195.91	R565	-87 257.04	3 316	759.06	
L566	-86 911.35	3 329	028.17	R566	-87 215.40	3 316	624.48	
L567	-86 884.73	3 328	894.77	R567	-86 961.40	3 315	978.92	
L568	-86 839.96	3 328	667.57	R568	-86 879.98	3 315	725.91	
L569	-86 834.78	3 328	630.95	R569	-86 846.30	3 315	570.89	
L570	-86 828.73	3 328	568.11	R570	-86 806.26	3 315	398.67	
L571	-86 826.07	3 328	554.69	R571	-86 747.89	3 315	102.96	
L572	-86 820.13	3 328	528.21	R572	-86 701.59	3 314	876.88	
L573	-86 775.20	3 328	271.93	R573	-86 659.62	3 314	716.03	
L574	-86 768.34	3 328	231.59	R574	-86 599.95	3 314	533.44	
L575	-86 746.50	3 328	125.25	R575	-86 556.31	3 314	419.13	
L576	-86 739.57	3 328	084.79	R576	-86 168.50	3 313	464.76	
L577	-86 732.12	3 328	026.11	R577	-86 002.58	3 313	056.29	
L578	-86 653.25	3 327	576.04	R578	-85 983.79	3 313	003.96	
L579	-86 634.05	3 327	467.99	R579	-85 956.09	3 312	941.88	
L580	-86 626.14	3 327	428.73	R580	-85 903.76	3 312	813.25	
L581	-86 610.99	3 327	362.67	R581	-85 867.55	3 312	727.06	
L582	-86 597.11	3 327	309.80	R582	-85 823.30	3 312	627.16	
L583	-86 578.32	3 327	244.46	R583	-85 788.65	3 312	552.74	
L584	-86 570.63	3 327	219.28	R584	-85 739.88	3 312	454.21	
L585	-86 561.61	3 327	192.76	R585	-85 697.13	3 312	372.74	
L586	-86 541.37	3 327	136.11	R586	-85 652.60	3 312	291.25	
L587	-86 531.98	3 327	110.39	R587	-85 586.82	3 312	178.42	
L588	-86 272.46	3 326	423.96	R588	-85 529.75	3 312	084.75	
L589	-86 262.37	3 326	414.94	R589	-85 395.28	3 311	880.78	
L590	-86 233.81	3 326	422.14	R590	-85 379.34	3 311	860.09	
L591	-86 225.75	3 326	392.40	R591	-84 807.81	3 311	023.37	
L592	-86 251.99	3 326	381.43	R592	-84 760.20	3 310	946.96	
L593	-86 254.24	3 326	375.76	R593	-84 740.93	3 310	915.78	
L594	-86 066.08	3 325	877.80	R594	-84 690.73	3 310	818.90	
L595	-85 819.40	3 325	225.83	R595	-84 675.17	3 310	783.43	
L596	-85 809.03	3 325	200.66	R596	-84 661.83	3 310	752.16	
L597	-85 786.95	3 325	152.02	R597	-84 653.05	3 310	731.57	
L598	-85 778.67	3 325	128.02	R598	-84 621.54	3 310	642.30	
L599	-85 770.50	3 325	099.63	R599	-84 582.69	3 310	497.42	
L600	-85 766.32	3 325	086.94	R600	-84 518.12	3 310	289.41	
L601	-85 757.10	3 325	061.02	R601	-84 546.10	3 310	264.57	
L602	-85 733.37	3 324	997.23	R602	-84 477.64	3 309	797.56	
L603	-85 723.34	3 324	969.04	R603	-84 417.71	3 309	385.91	
L604	-85 671.47	3 324	779.33	R604	-84 443.13	3 309	301.93	
L605	-85 660.24	3 324	713.38	R605	-84 400.47	3 309	177.15	
L606	-85 642.74	3 324	545.44	R606	-84 378.80	3 309	126.29	
L607	-85 642.46	3 324	447.90	R607	-84 353.45	3 309	033.13	
L608	-85 648.41	3 324	307.72	R608	-84 365.15	3 308	802.84	
L609	-85 656.90	3 324	102.67	R609	-84 367.28	3 308	792.59	
L610	-85 655.54	3 324	018.38	R610	-84 372.80	3 308	771.59	
L611	-85 645.20	3 323	936.27	R611	-84 377.30	3 308	761.05	
L612	-85 625.61	3 323	856.09	R612	-84 383.71	3 308	750.73	

Vel 35 Van 40  
Sheet of

P633/07

PADRESERWE KOÖRDINATE				ROAD RESERVE CO-ORDINATES			
LINKERKANT/LEFT HAND SIDE				REGTERKANT/RIGHT HAND SIDE			
	Y	X	WG 17°		Y	X	
L613	-85 595.21	3 323	773.54	R613	-84 438.92	3 308	681.92
L614	-85 557.08	3 323	698.29	R614	-84 710.47	3 308	032.70
L615	-85 507.17	3 323	622.93	R615	-84 849.79	3 307	698.89
L616	-85 213.54	3 323	225.44	R616	-84 877.02	3 307	636.84
L617	-85 159.84	3 323	149.43	R617	-84 901.28	3 307	575.60
L618	-85 130.07	3 323	113.14	R618	-84 930.69	3 307	503.97
L619	-85 065.37	3 323	030.34	R619	-84 958.01	3 307	426.42
L620	-85 006.17	3 322	943.15	R620	-84 981.48	3 307	321.49
L621	-84 976.96	3 322	900.11	R621	-84 990.41	3 307	230.84
L622	-84 938.02	3 322	818.86	R622	-84 992.78	3 307	132.43
L623	-84 909.28	3 322	739.68	R623	-84 987.10	3 307	055.95
L624	-84 885.51	3 322	647.96	R624	-84 975.56	3 306	981.15
L625	-84 877.20	3 322	565.48	R625	-84 958.40	3 306	907.03
L626	-84 876.03	3 322	522.71	R626	-84 933.73	3 306	822.04
L627	-84 875.72	3 322	503.99	R627	-84 923.11	3 306	767.19
L628	-84 874.75	3 322	476.44	R628	-84 849.20	3 306	528.82
L629	-84 883.86	3 322	389.24	R629	-84 680.57	3 305	944.98
L630	-84 899.38	3 322	323.32	R630	-84 596.14	3 305	646.69
L631	-84 924.49	3 322	231.71	R631	-84 529.76	3 305	418.00
L632	-84 946.89	3 322	126.32	R632	-84 336.08	3 304	748.12
L633	-84 953.73	3 322	034.33	R633	-84 262.33	3 304	546.38
L634	-84 950.52	3 321	939.38	R634	-84 125.27	3 304	369.39
L635	-84 929.90	3 321	839.84	R635	-82 513.88	3 302	728.28
L636	-84 906.42	3 321	760.96	R636	-82 351.07	3 302	467.83
L637	-84 850.44	3 321	601.45	R637	-82 291.76	3 302	257.66
L638	-84 831.54	3 321	556.81	R638	-82 300.62	3 301	778.45
L639	-84 796.61	3 321	453.84	R639	-82 299.60	3 301	735.34
L640	-84 690.56	3 321	171.11	R640	-82 296.72	3 301	498.00
L641	-84 628.38	3 321	002.57	R641	-82 290.88	3 301	389.11
L642	-84 594.75	3 320	898.11	R642	-82 298.75	3 301	355.35
L643	-84 557.44	3 320	754.24	R643	-82 301.83	3 301	098.03
L644	-84 538.75	3 320	654.80	R644	-82 342.78	3 301	075.47
L645	-84 517.64	3 320	515.29	R645	-82 332.44	3 301	053.78
L646	-84 503.02	3 320	411.78	R646	-82 302.00	3 301	072.34
L647	-84 488.31	3 320	277.75	R647	-82 302.10	3 301	040.92
L648	-84 477.45	3 320	135.32	R648	-82 298.81	3 300	941.59
L649	-84 472.44	3 320	055.50	R649	-82 282.62	3 300	812.76
L650	-84 458.88	3 319	819.75	R650	-82 254.34	3 300	684.79
L651	-84 455.47	3 319	765.75	R651	-82 214.63	3 300	560.51
L652	-84 452.88	3 319	719.97	R652	-82 164.58	3 300	442.85
L653	-84 447.27	3 319	673.45	R653	-82 102.42	3 300	327.30
L654	-84 456.96	3 319	503.58	R654	-82 058.36	3 300	258.80
L655	-84 485.68	3 319	410.52	R655	-81 770.77	3 299	861.51
L656	-84 515.43	3 319	333.51	R656	-81 713.64	3 299	776.31
L657	-84 558.43	3 319	247.89	R657	-81 665.14	3 299	688.90
L658	-84 610.15	3 319	170.63	R658	-81 623.93	3 299	597.44
L659	-84 706.13	3 319	058.69	R659	-81 590.21	3 299	504.40
L660	-84 793.85	3 318	999.60	R660	-81 528.93	3 299	295.97
L661	-84 835.86	3 318	972.64	R661	-81 423.38	3 298	936.21
L662	-84 909.85	3 318	925.17	R662	-81 394.63	3 298	811.40
L663	-85 729.23	3 318	407.03	R663	-81 367.53	3 298	748.21

Vel	36	Van	40	P633/07
Sheet		of		

PADRESERWE KOÖRDINATE				ROAD RESERVE CO-ORDINATES			
LINKERKANT/LEFT HAND SIDE				REGTERKANT/RIGHT HAND SIDE			
	Y	X	WG 17°		Y	X	
L664	-85 766.85	3 318	383.14	R664	-81 337.35	3 298	645.10
L665	-85 795.00	3 318	361.79	R665	-81 287.16	3 298	480.87
L666	-85 841.70	3 318	335.30	R666	-81 221.04	3 298	248.74
L667	-86 261.65	3 318	069.17	R667	-81 190.59	3 298	146.16
L668	-86 292.16	3 318	040.81	R668	-81 046.96	3 297	655.73
L669	-86 337.71	3 318	020.99	R669	-80 905.29	3 297	174.41
L670	-86 678.91	3 317	804.73	R670	-80 840.36	3 296	953.52
L671	-86 801.39	3 317	727.15	R671	-80 714.96	3 296	527.94
L672	-86 884.42	3 317	667.18	R672	-80 682.04	3 296	393.93
L673	-86 965.18	3 317	593.24	R673	-80 659.48	3 296	270.27
L674	-87 027.48	3 317	521.76	R674	-80 646.41	3 296	141.16
L675	-87 089.14	3 317	431.36	R675	-80 642.27	3 296	010.16
L676	-87 134.52	3 317	346.48	R676	-80 640.51	3 295	886.07
L677	-87 175.52	3 317	238.71	R677	-80 644.58	3 295	686.38
L678	-87 199.58	3 317	146.23	R678	-80 644.94	3 295	632.77
L679	-87 214.08	3 317	039.53	R679	-80 645.13	3 295	471.92
L680	-87 216.79	3 316	944.31	R680	-80 644.98	3 295	397.22
L681	-87 207.69	3 316	841.35	R681	-80 647.03	3 295	145.46
L682	-87 186.26	3 316	737.60	R682	-80 654.56	3 295	047.99
L683	-87 155.78	3 316	644.05	R683	-80 671.23	3 294	955.21
L684	-86 981.92	3 316	200.85	R684	-80 698.90	3 294	862.67
L685	-86 963.67	3 316	165.24	R685	-80 734.09	3 294	773.25
L686	-86 869.79	3 315	913.72	R686	-80 763.38	3 294	717.30
L687	-86 820.99	3 315	772.72	R687	-80 781.44	3 294	751.84
L688	-86 789.19	3 315	629.94	R688	-80 802.92	3 294	740.35
L689	-86 777.88	3 315	576.49	R689	-80 778.59	3 294	690.25
L690	-86 751.77	3 315	444.52	R690	-80 915.51	3 294	446.09
L691	-86 690.99	3 315	139.31	R691	-80 967.66	3 294	363.94
L692	-86 663.18	3 314	998.56	R692	-81 057.37	3 294	245.85
L693	-86 638.05	3 314	883.62	R693	-81 799.92	3 293	052.08
L694	-86 596.04	3 314	725.79	R694	-82 055.29	3 292	642.08
L695	-86 540.99	3 314	556.81	R695	-82 635.53	3 291	709.42
L696	-86 496.34	3 314	439.63	R696	-82 736.92	3 291	558.15
L697	-86 394.58	3 314	189.32	R697	-82 825.74	3 291	437.32
L698	-86 039.25	3 313	314.77	R698	-82 961.90	3 291	277.41
L699	-85 844.84	3 312	836.69	R699	-84 376.06	3 289	837.94
L700	-85 808.02	3 312	748.50	R700	-84 566.99	3 289	643.28
L701	-85 763.79	3 312	649.24	R701	-84 612.71	3 289	597.39
L702	-85 740.34	3 312	599.46	R702	-84 885.07	3 289	320.00
L703	-85 680.38	3 312	477.22	R703	-84 994.35	3 289	209.58
L704	-85 638.62	3 312	397.73	R704	-85 387.60	3 288	814.19
L705	-85 599.30	3 312	326.02	R705	-85 461.75	3 288	734.55
L706	-85 528.18	3 312	209.45	R706	-85 506.73	3 288	688.00
L707	-85 465.00	3 312	108.09	R707	-85 609.65	3 288	581.50
L708	-85 367.25	3 311	954.73	R708	-85 638.10	3 288	554.79
L709	-85 341.74	3 311	982.86	R709	-85 731.31	3 288	460.38
L710	-85 327.01	3 311	972.05	R710	-85 749.24	3 288	442.23
L711	-85 351.51	3 311	931.75	R711	-85 988.41	3 288	199.23
L712	-85 283.31	3 311	831.63	R712	-86 303.84	3 287	879.13
L713	-85 127.66	3 311	603.68	R713	-86 320.72	3 287	862.01
L714	-84 756.33	3 311	060.07	R714	-86 464.99	3 287	715.02

Vel	37	Van	40	P633/07
Sheet		of		

PADRESERWE KOÖRDINATE				ROAD RESERVE CO-ORDINATES			
LINKERKANT/LEFT HAND SIDE				REGTERKANT/RIGHT HAND SIDE			
	Y	X	WG 17°		Y	X	
L715	-84 688.45	3 310	950.91	R715	-86 586.24	3 287	583.52
L716	-84 632.88	3 310	843.82	R716	-86 609.15	3 287	548.03
L717	-84 584.97	3 310	730.40	R717	-86 696.44	3 287	413.88
L718	-84 562.81	3 310	663.14	R718	-86 754.91	3 287	305.62
L719	-84 490.22	3 310	383.06	R719	-86 776.04	3 287	258.74
L720	-84 275.35	3 308	884.28	R720	-86 805.84	3 287	191.15
L721	-84 923.23	3 307	306.10	R721	-86 849.10	3 287	067.81
L722	-84 895.67	3 306	913.21	R722	-86 954.57	3 286	749.63
L723	-84 274.68	3 304	764.27	R723	-87 293.62	3 285	730.42
L724	-84 078.92	3 304	411.71	R724	-87 316.30	3 285	650.84
L725	-82 372.54	3 302	675.49	R725	-87 333.60	3 285	557.21
L726	-82 257.42	3 302	413.29	R726	-87 341.62	3 285	461.71
L727	-82 226.67	3 302	207.11	R727	-87 339.88	3 285	366.24
L728	-82 221.85	3 301	851.18	R728	-87 328.84	3 285	270.44
L729	-82 214.08	3 301	784.96	R729	-87 308.34	3 285	176.43
L730	-82 216.01	3 301	753.52	R730	-87 270.24	3 285	063.99
L731	-82 231.86	3 301	627.57	R731	-87 230.42	3 284	979.71
L732	-82 237.79	3 301	136.38	R732	-86 962.58	3 284	474.46
L733	-82 203.93	3 301	159.15	R733	-86 920.13	3 284	382.09
L734	-82 184.06	3 301	145.34	R734	-86 887.26	3 284	276.48
L735	-82 238.16	3 301	104.18	R735	-86 870.73	3 284	196.19
L736	-82 238.65	3 301	071.08	R736	-86 860.60	3 284	097.84
L737	-82 236.38	3 300	991.98	R737	-86 865.48	3 284	000.46
L738	-82 233.55	3 300	941.22	R738	-86 877.84	3 283	905.37
L739	-82 230.55	3 300	898.86	R739	-86 870.94	3 283	834.72
L740	-82 219.42	3 300	825.90	R740	-86 876.40	3 283	782.58
L741	-82 192.57	3 300	703.74	R741	-86 866.04	3 283	686.02
L742	-82 156.99	3 300	592.31	R742	-86 829.36	3 283	516.43
L743	-82 107.21	3 300	472.36	R743	-86 809.25	3 283	423.35
L744	-82 049.33	3 300	363.43	R744	-86 815.17	3 283	401.40
L745	-82 022.41	3 300	321.30				
L746	-82 003.51	3 300	295.26				
L747	-81 978.11	3 300	255.60				
L748	-81 712.76	3 299	891.83				
L749	-81 653.91	3 299	803.10				
L750	-81 603.81	3 299	710.82				
L751	-81 561.39	3 299	614.48				
L752	-81 527.27	3 299	514.17				
L753	-81 493.96	3 299	400.68				
L754	-81 492.54	3 299	387.41				
L755	-81 493.58	3 299	374.26				
L756	-81 481.58	3 299	358.30				
L757	-81 343.35	3 298	890.42				
L758	-81 315.97	3 298	822.37				
L759	-81 311.33	3 298	805.77				
L760	-81 300.00	3 298	768.62				
L761	-81 285.13	3 298	736.61				
L762	-81 278.38	3 298	669.33				
L763	-81 159.41	3 298	265.58				
L764	-81 123.18	3 298	142.92				
L765	-81 118.36	3 298	126.40				

Vel	38	Van	40	P633/07
Sheet		of		

PADRESERWE KOÖRDINATE				ROAD RESERVE CO-ORDINATES		
LINKERKANT/LEFT HAND SIDE				REGTERKANT/RIGHT HAND SIDE		
	Y	X	WG 17°	Y	X	
L766	-81 114.29	3 298	105.17			
L767	-81 102.38	3 298	070.48			
L768	-80 837.07	3 297	168.78			
L769	-80 787.39	3 297	000.34			
L770	-80 653.83	3 296	546.21			
L771	-80 644.48	3 296	512.58			
L772	-80 622.16	3 296	421.76			
L773	-80 596.87	3 296	287.59			
L774	-80 584.04	3 296	214.10			
L775	-80 581.96	3 296	199.19			
L776	-80 573.34	3 295	752.47			
L777	-80 570.73	3 295	641.36			
L778	-80 568.91	3 295	542.46			
L779	-80 582.76	3 295	387.67			
L780	-80 584.61	3 295	131.42			
L781	-80 586.86	3 295	043.11			
L782	-80 613.54	3 294	906.76			
L783	-80 664.33	3 294	755.48			
L784	-80 723.53	3 294	657.06			
L785	-80 709.71	3 294	631.97			
L786	-80 742.19	3 294	577.34			
L787	-80 763.10	3 294	598.43			
L788	-81 010.33	3 294	201.33			
L789	-81 387.11	3 293	595.56			
L790	-81 374.23	3 293	585.51			
L791	-81 468.28	3 293	428.72			
L792	-81 508.05	3 293	400.96			
L793	-82 034.24	3 292	555.44			
L794	-82 277.67	3 292	164.27			
L795	-82 522.98	3 291	769.82			
L796	-82 581.45	3 291	676.01			
L797	-82 685.08	3 291	520.77			
L798	-82 777.80	3 291	395.46			
L799	-82 833.44	3 291	330.23			
L800	-82 999.47	3 291	145.03			
L801	-83 092.72	3 291	050.60			
L802	-83 456.74	3 290	680.78			
L803	-83 458.74	3 290	679.85			
L804	-83 464.37	3 290	674.15			
L805	-83 464.52	3 290	672.77			
L806	-83 996.77	3 290	131.61			
L807	-84 535.96	3 289	584.25			
L808	-84 782.73	3 289	333.50			
L809	-85 072.15	3 289	039.99			
L810	-85 350.07	3 288	757.09			
L811	-85 558.29	3 288	545.82			
L812	-85 580.11	3 288	523.71			
L813	-85 571.60	3 288	509.11			
L814	-85 579.55	3 288	487.17			
L815	-85 589.18	3 288	481.99			
L816	-85 600.70	3 288	502.62			

Vel	39	Van	40	P633/07
Sheet		of		



PADRESERWE KOÖRDINATE				ROAD RESERVE CO-ORDINATES		
LINKERKANT/LEFT HAND SIDE				REGTERKANT/RIGHT HAND SIDE		
	Y	X	WG 17°	Y	X	
L817	-85 677.65	3 288	424.02			
L818	-85 987.82	3 288	109.08			
L819	-86 271.86	3 287	820.72			
L820	-86 414.12	3 287	676.18			
L821	-86 498.15	3 287	583.91			
L822	-86 546.15	3 287	524.67			
L823	-86 574.86	3 287	484.96			
L824	-86 640.59	3 287	383.88			
L825	-86 697.78	3 287	278.03			
L826	-86 746.53	3 287	167.89			
L827	-86 774.85	3 287	089.96			
L828	-87 050.18	3 286	261.11			
L829	-87 047.10	3 286	255.19			
L830	-87 023.88	3 286	251.15			
L831	-87 024.13	3 286	246.09			
L832	-87 048.70	3 286	250.27			
L833	-87 055.09	3 286	246.14			
L834	-87 233.17	3 285	711.17			
L835	-87 254.29	3 285	636.94			
L836	-87 269.46	3 285	556.08			
L837	-87 278.13	3 285	459.84			
L838	-87 276.70	3 285	370.14			
L839	-87 266.40	3 285	281.41			
L840	-87 251.82	3 285	215.26			
L841	-87 209.98	3 285	088.73			
L842	-87 174.36	3 285	008.98			
L843	-86 906.71	3 284	504.16			
L844	-86 873.65	3 284	435.45			
L845	-86 846.15	3 284	364.45			
L846	-86 825.01	3 284	291.41			
L847	-86 809.85	3 284	216.80			
L848	-86 800.73	3 284	141.36			
L849	-86 797.83	3 284	063.28			
L850	-86 798.79	3 283	866.41			
L851	-86 794.03	3 283	782.13			
L852	-86 784.93	3 283	715.15			
L853	-86 763.49	3 283	621.70			
L854	-86 745.27	3 283	569.56			
L855	-86 719.98	3 283	519.59			
L856	-86 688.92	3 283	473.58			
L857	-86 676.28	3 283	456.95			
L858	-86 656.26	3 283	451.98			

Vel	40	Van	40	P633/07
Sheet		of		