

**CONTENTS****INHOUD**

No.	Page No.	Gazette No.	No.	Bladsy No.	Koerant No.
<b>GOVERNMENT NOTICE</b>			<b>GOEWERMENSKENNISGEWINGS</b>		
<b>Transport, Department of</b>			<b>Vervoer, Departement van</b>		
<i>Government Notice</i>			<i>Goewermentskennisgewing</i>		
140			140		
South African National Roads Agency Limited and the National Roads Act (7/1998): South African National Roads Agency Limited: Declaration amendment of National Road N7 Section 8: Amendment of Declaration Nos. 2693 of 1990 and 516 of 1987 .....			Suid-Afrikaanse Nasionale Padagentskap Beperk en die Nasionale Paaie Wet (7/1998): Suid-Afrikaanse Nasionale Padagentskap Beperk: Verklaring wysiging van Nasionale Pad N7 Seksie 8: Wysiging van Verklaring Nos. 2693 van 1990 en 516 van 1987 .....		
	2	30742		3	30742

**GOVERNMENT NOTICE  
GOEWERMENSKENNISGEWING**

**DEPARTMENT OF TRANSPORT  
DEPARTEMENT VAN VERVOER**

No. 140

8 February 2008

**THE SOUTH AFRICAN NATIONAL ROADS  
AGENCY LIMITED**

Registration No: 98/09584/06

**DECLARATION AMENDMENT OF NATIONAL ROAD N7 SECTION 8**

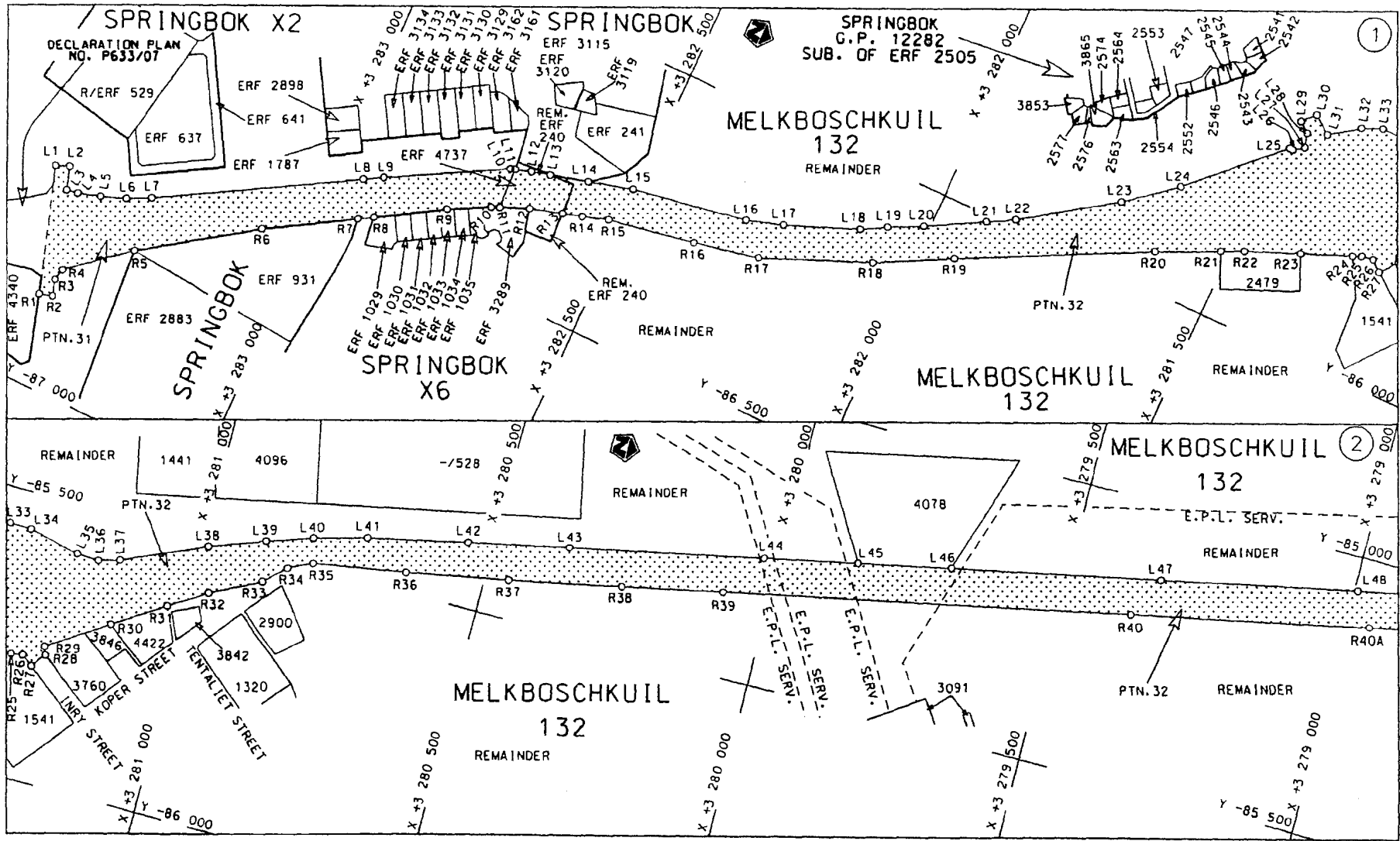
AMENDMENT OF DECLARATION NO'S. 2693 OF 1990 AND 516 OF 1987.

By virtue of section 40 (1)(b) of the South African National Roads Agency Limited and the National Roads Act, 1998 (Act No. 7 of 1998), I hereby amend the following declarations by substituting (I) Declaration No. 2693 of 1990, from points L584 and R532 on sheet 21 up to sheet 24 of Plan No. P367/90 and the applicable co-ordinates and (II) Declaration No. 516 of 1987 the descriptive section from O'kiep to Vioolsdrif, with the subjoined sheets 1 to 37 of Plan No. P629/07.

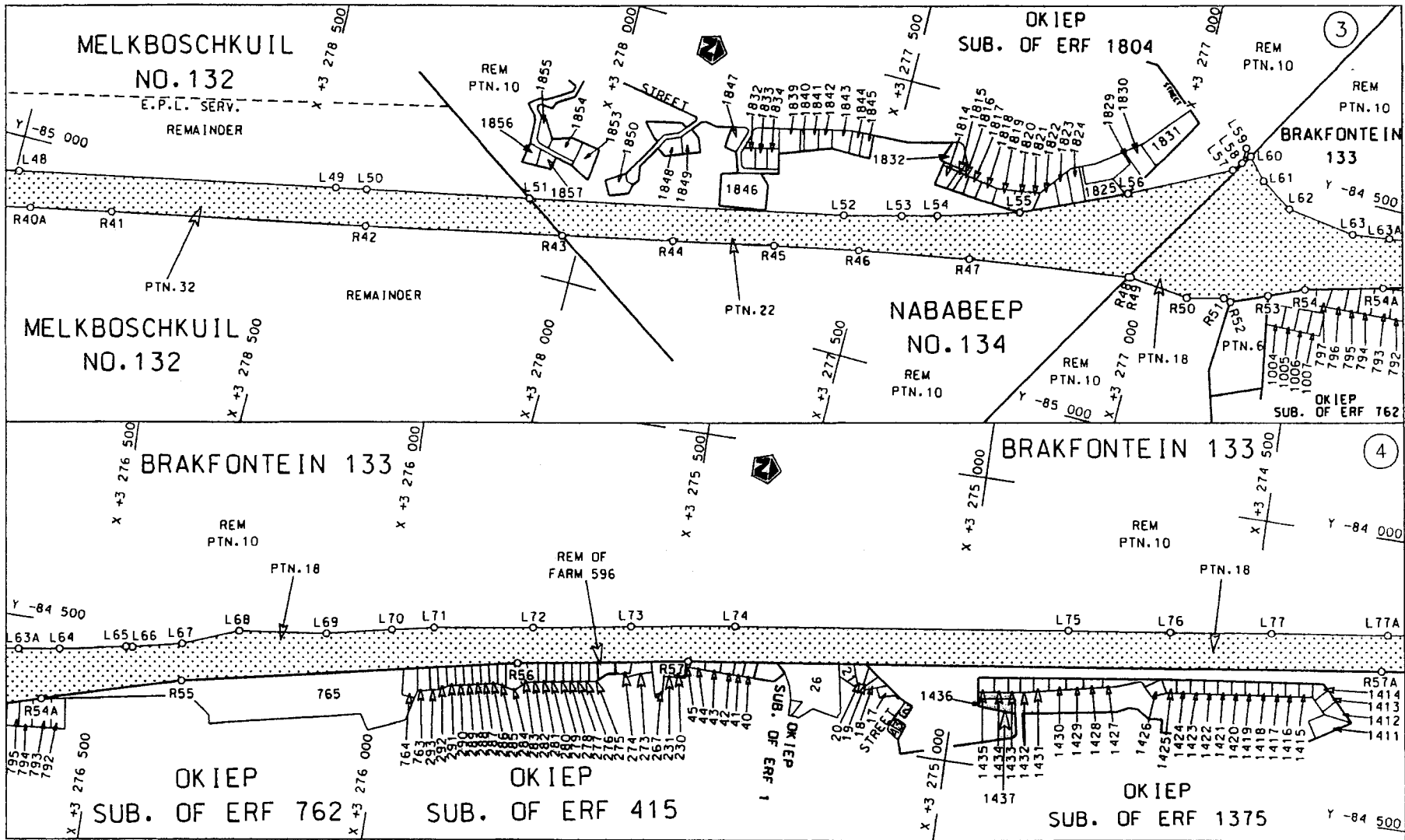
**(National Road N7 Section 8: Springbok – Vioolsdrif )**

*J. Radtke*

**MINISTER OF TRANSPORT**

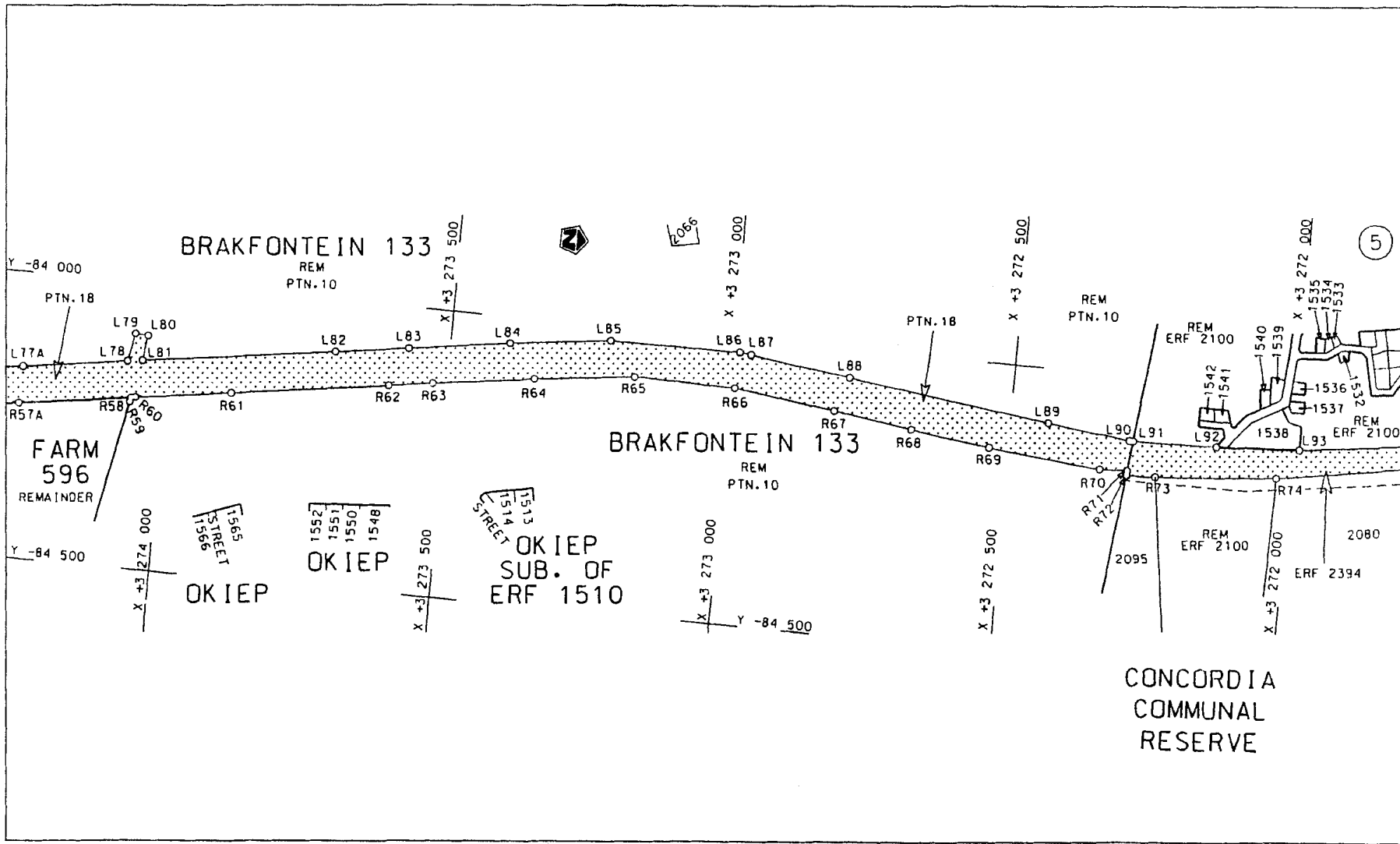


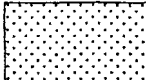
<p>Die Suid Afrikaanse Nasionale Padagentskap Beperk The South African National Roads Agency Limited</p>	<p>Die figuur getoon The figure shown</p>		<p>steldie padreserwe voor van 'n gedeelte represents the road reserve of a portion van Nasionale Roete N7 Seksie of National Route N7 Section</p>	<p>Vel Sheet 1 van of 37</p>
				<p>Plan P629/07</p>



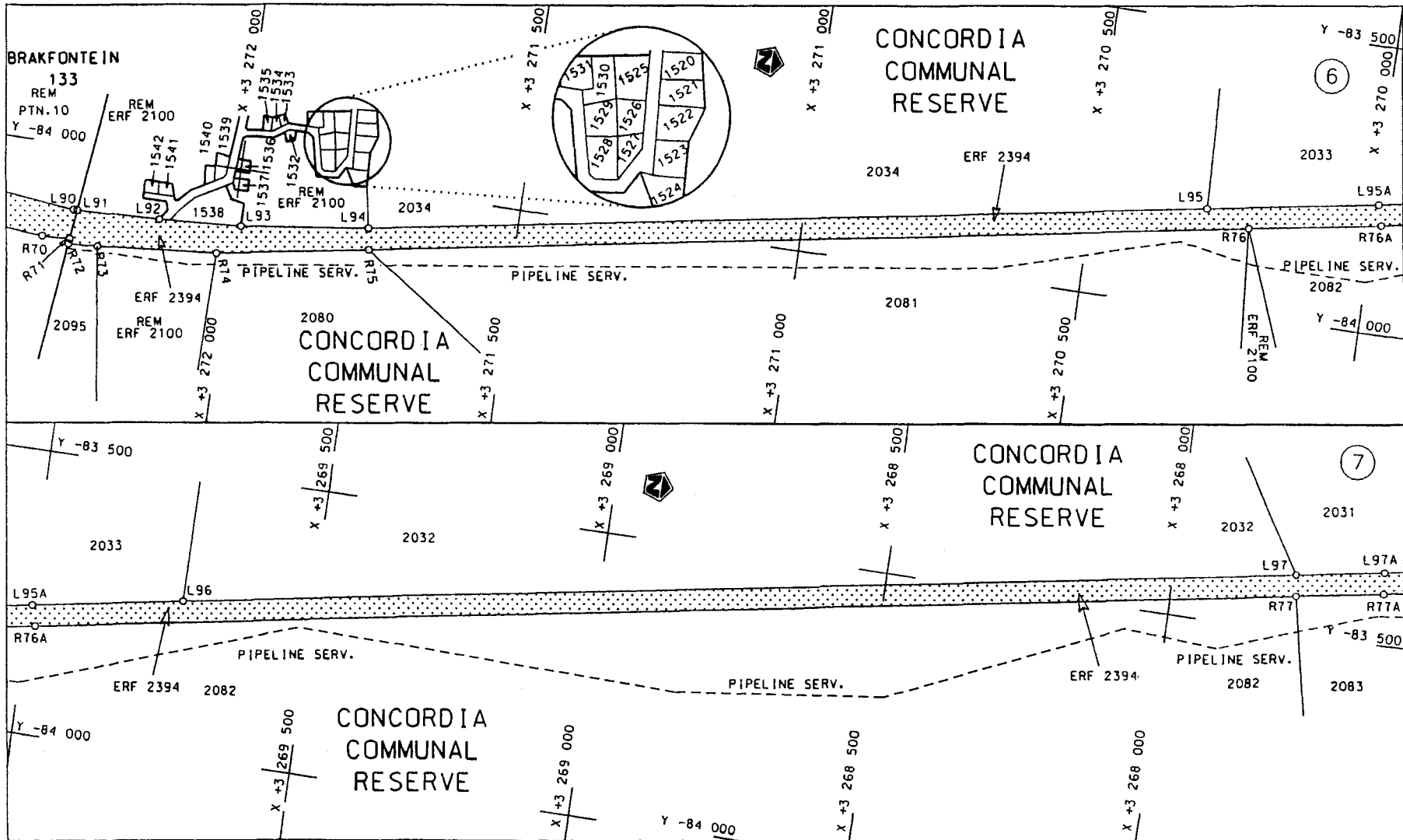
<p>Die Suid Afrikaanse Nasionale Podagentskap Beperk The South African National Roads Agency Limited</p>	<p>Die figuur getoon The figure shown</p>	<p>steldie podreserwe voor van 'n gedeelte represents the road reserve of a portion van Nasionale Roete N7 Sektie 8 of National Route N7 Section 8</p>	<p>Vel Sheet 2 van 37 of of</p>
			<p>Plan P629/07</p>

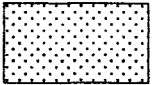
D.O.9.A



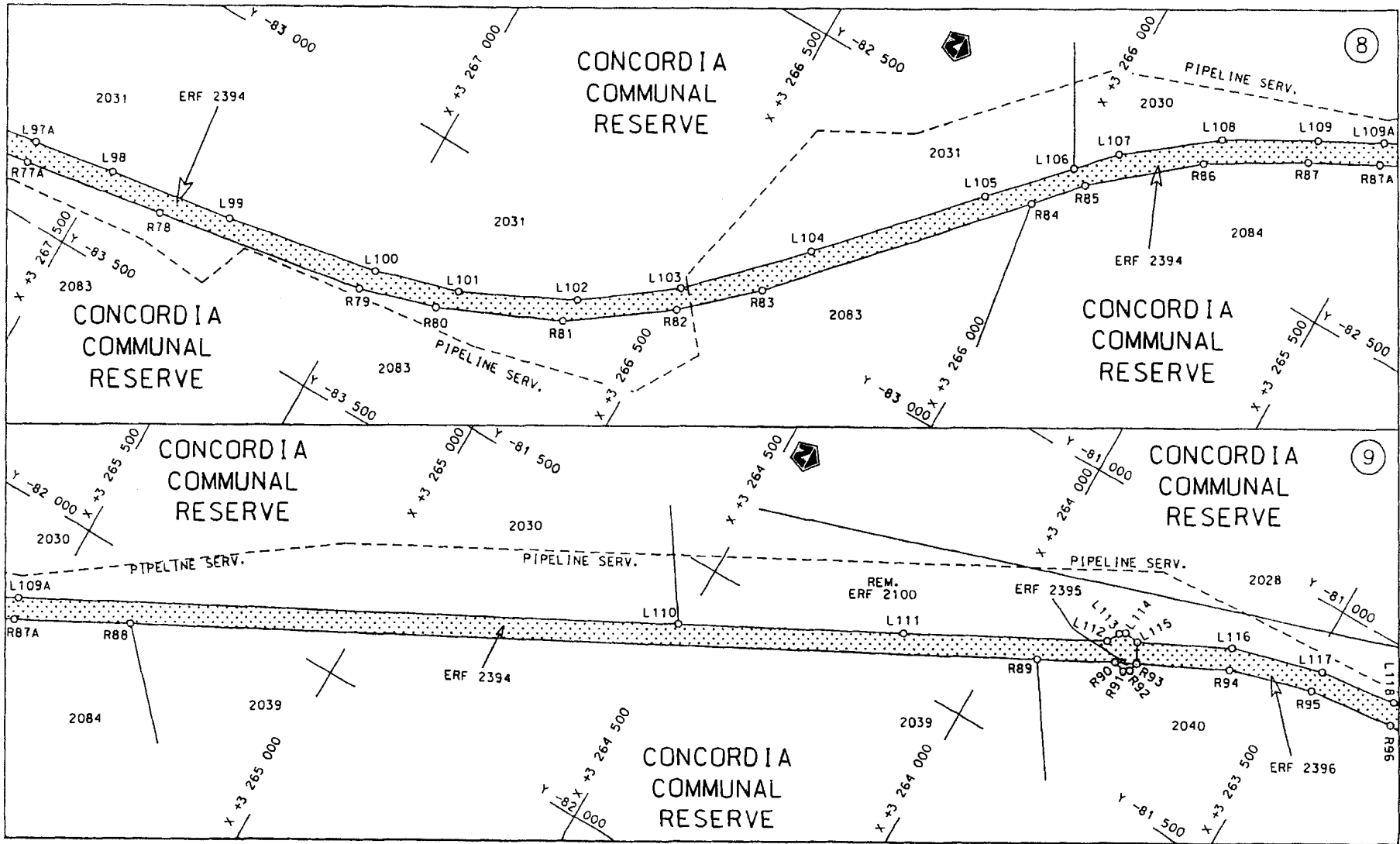
<p>Die Suid Afrikaanse Nasionale Padagentskap Beperk The South African National Roads Agency Limited</p>	<p>Die figuur getoon The figure shown</p> 	<p>stel die padreserwe voor van 'n gedeelte represents the road reserve of a portion van Nasionale Roete N7 of National Route Section 8</p>	<p>Vel Sheet 3 van 37 Plan P629/07</p>
--	---	---	--

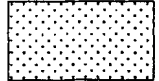
D.O.9.A



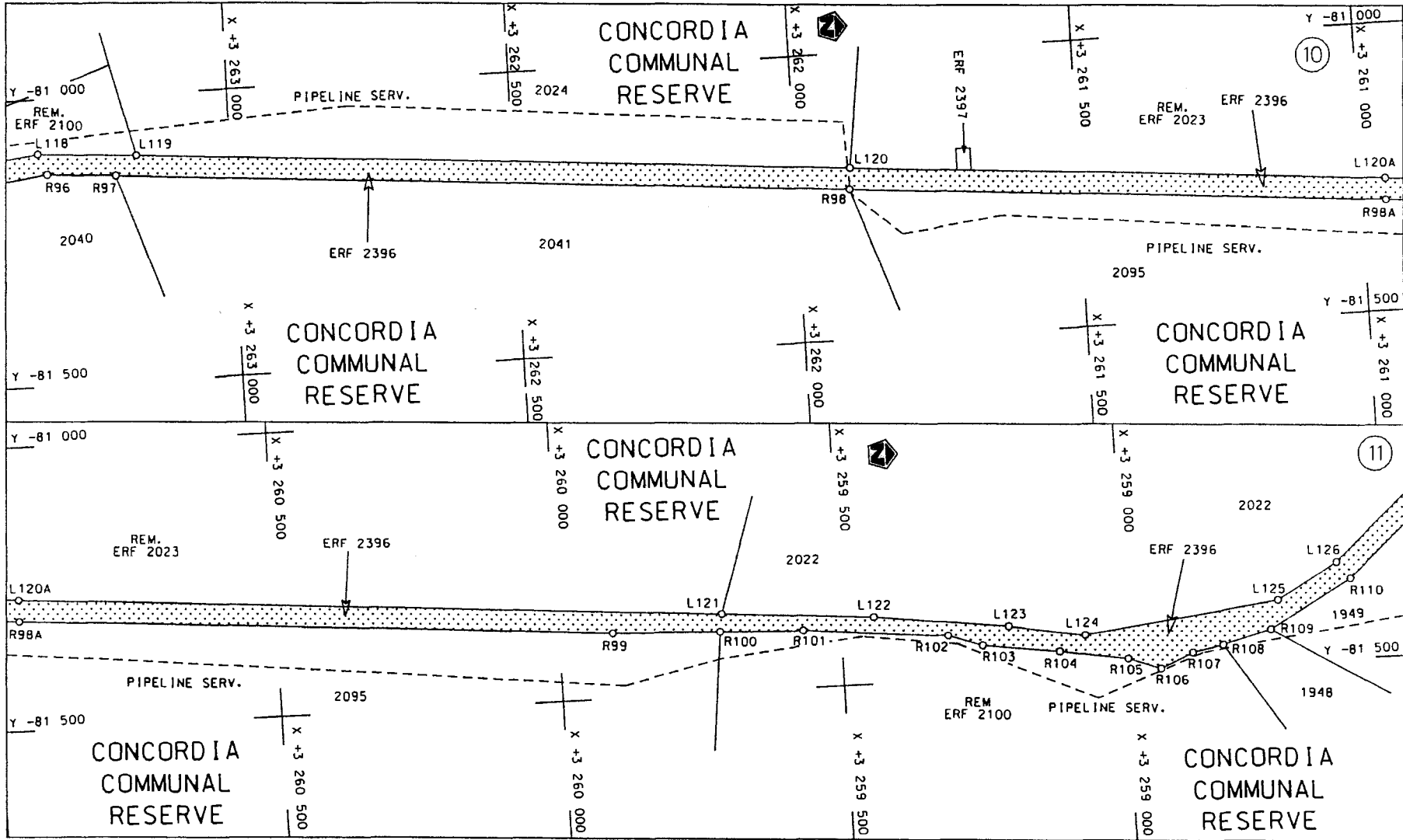
<p>Die Suid Afrikaanse Nasionale Padagentskap Beperk The South African National Roads Agency Limited</p>	<p>Die figuur getoon The figure shown</p> 	<p>steldie padreserwe voor van 'n gedeelte represents the road reserve of a portion van Nasionale Roete N7 Seksie 8 of National Route N7 Section 8</p>	<p>Vel Sheet 4 van of 37 Plan P629/07</p>
--	---	--	---

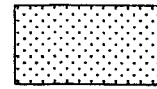
D.O.9.A

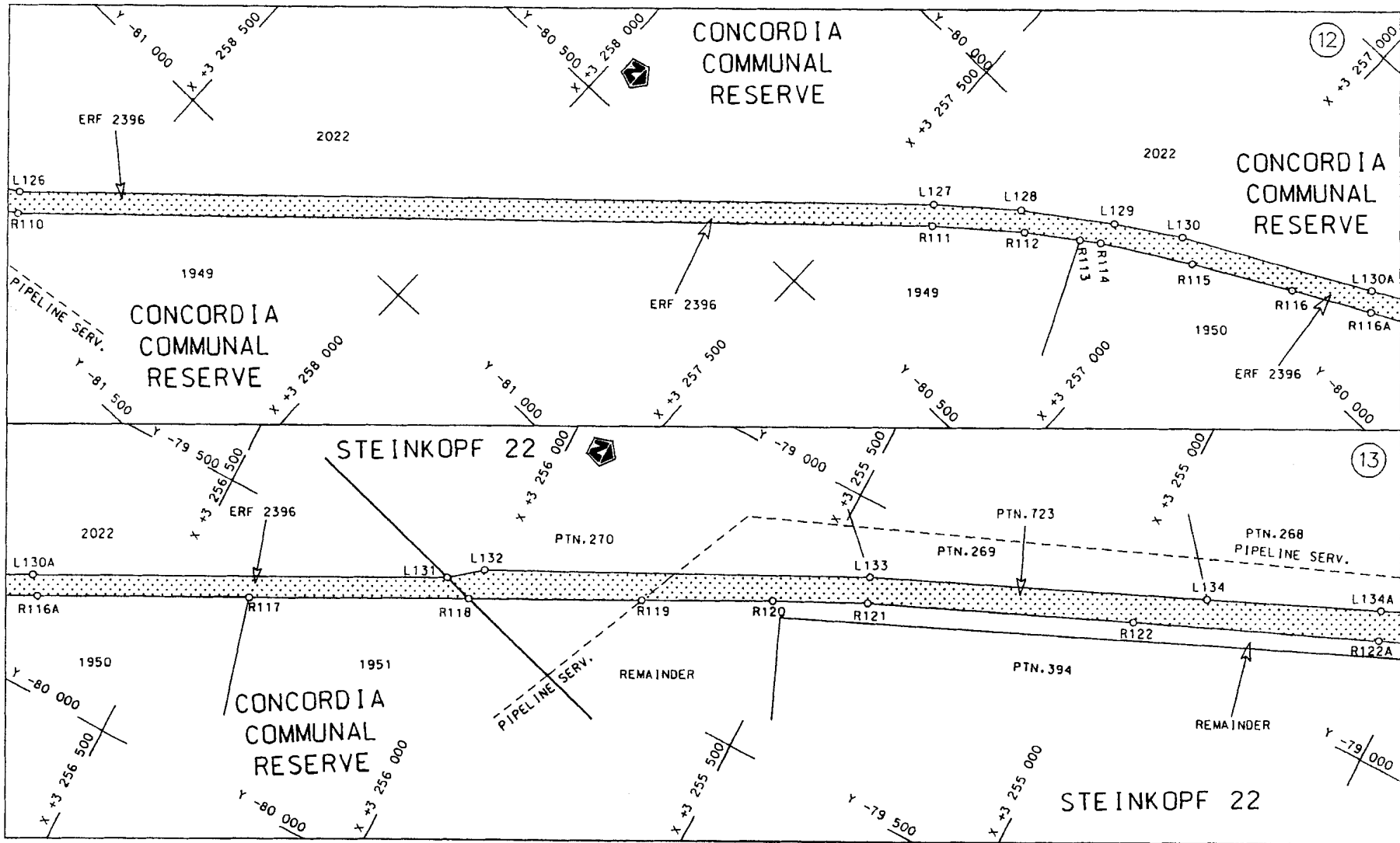


<p>Die Suid Afrikaanse Nasionale Padagentskap Beperk The South African National Roads Agency Limited</p>	<p>Die figuur getoon The figure shown</p>		<p>steldie padreserwe voor van 'n gedeelte represents the road reserve of a portion van Nasionale Roete N7 Sektie 8 of National Route Section</p>	<p>Vel Sheet 5 van 37 Plan P629/07</p>
--	---	---	---	--

D.O.9.A



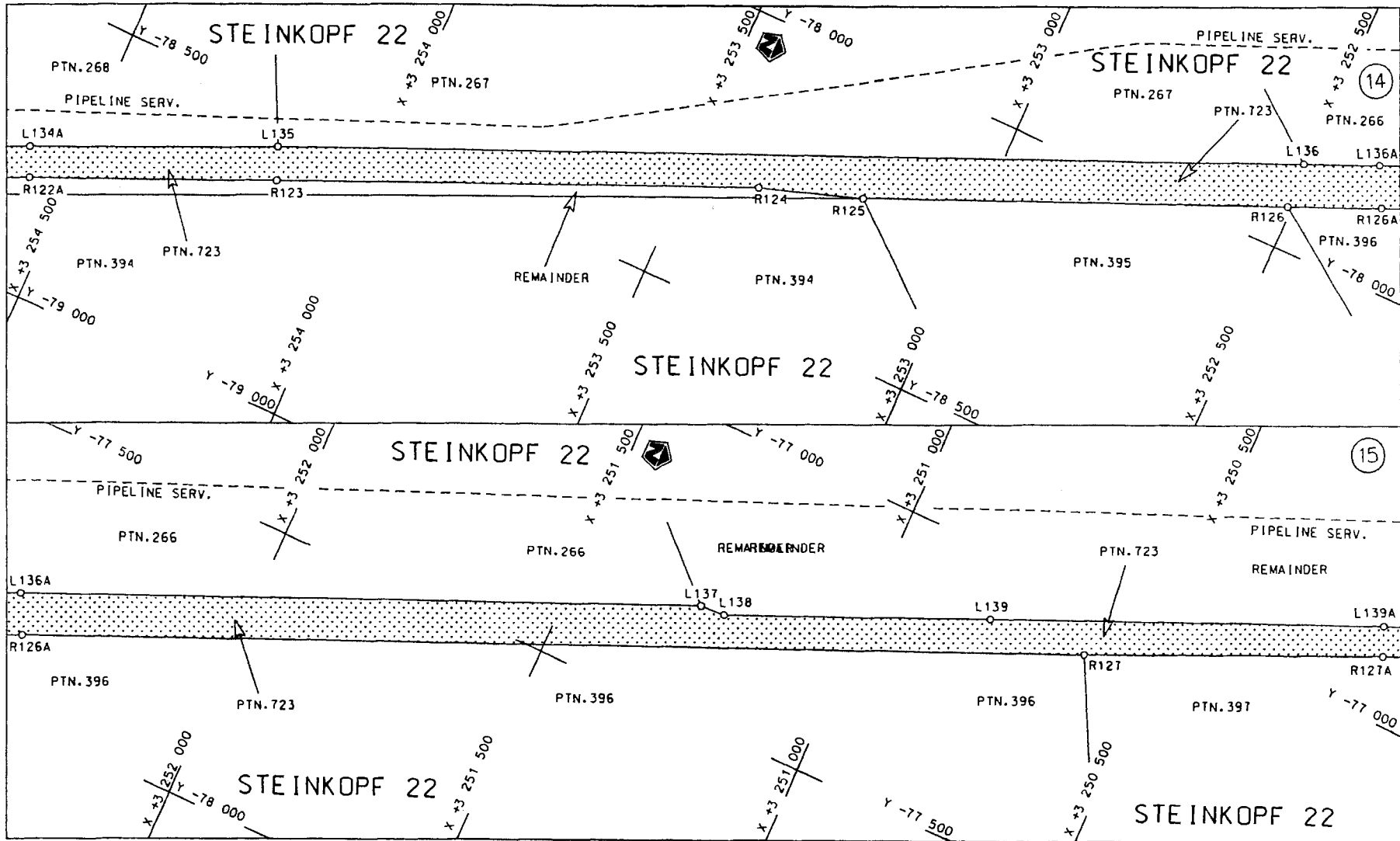
<p>Die Suid Afrikaanse Nasionale Padagentskap Beperk The South African National Roads Agency Limited</p>	<p>Die figuur getoon The figure shown</p> 	<p>steldie padreserwe voor van 'n gedeelte represents the road reserve of a portion van Nasionale Roete N7 Seksie Section of National Route 8</p>	<p>Vel Sheet 6 van of 37 Plan P629/07</p>
--	---	---	---

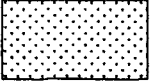


<p>Die Suid Afrikaanse Nasionale Padagentskap Beperk The South African National Roads Agency Limited</p>	<p>Die figuur getoon The figure shown</p>		<p>steldie padreserwe voor van 'n gedeelte represents the road reserve of a portion van Nasionale Roete N7 Seksie Section of National Route 8</p>	<p>Vel Sheet 7 van of 37 Plan P629/07</p>
--	---	--	---	---

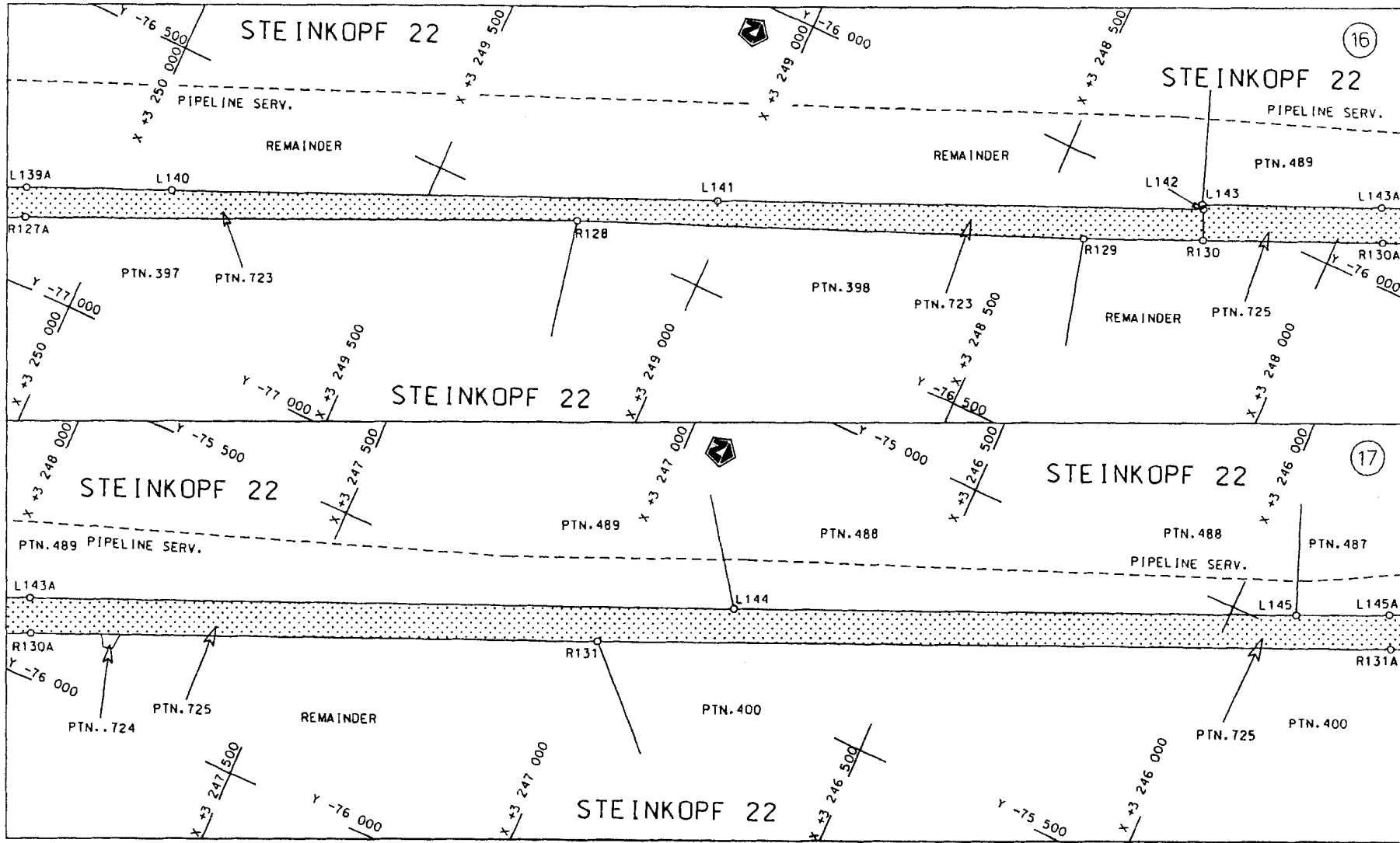
D.O.9.A



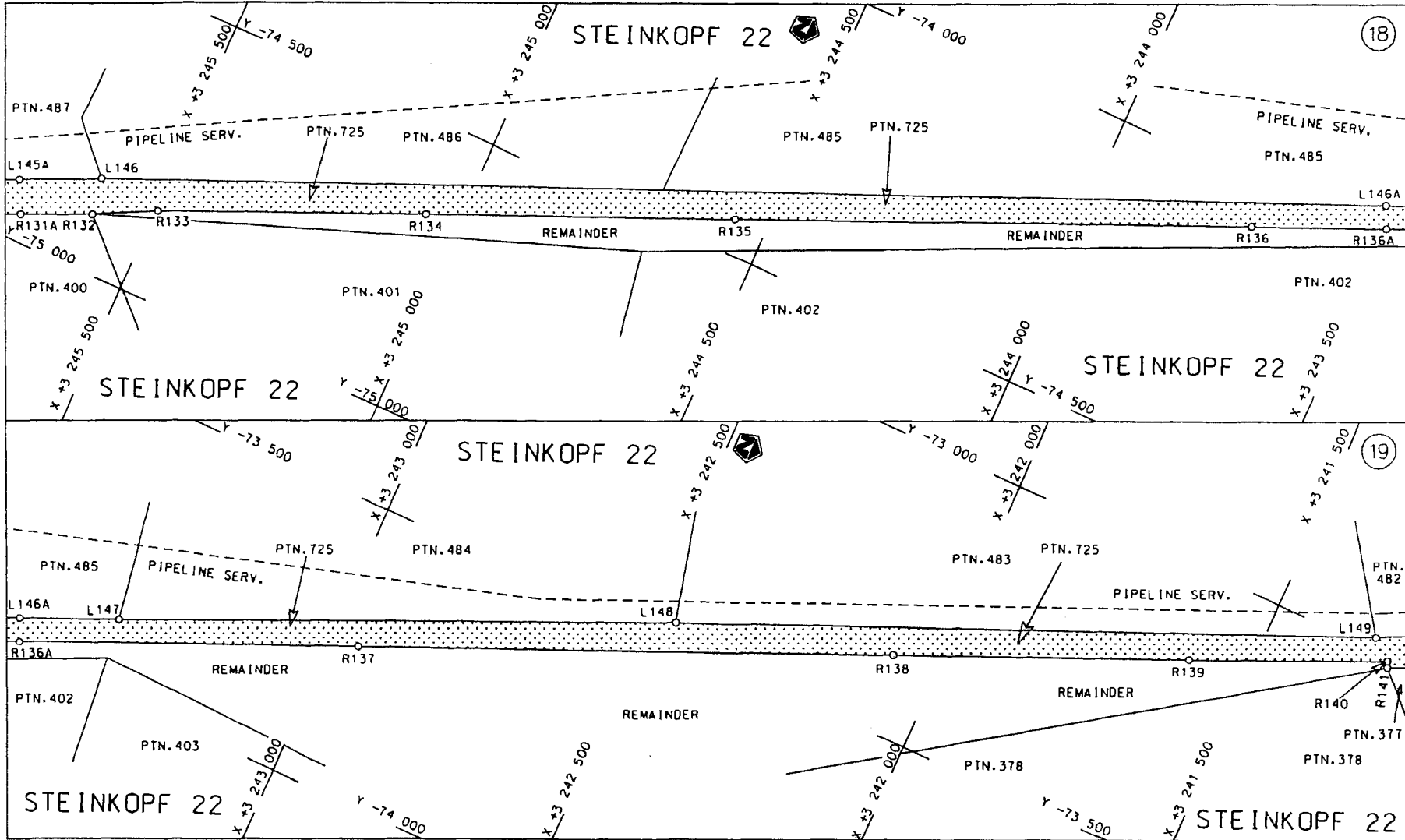


<p>Die Suid Afrikaanse Nasionale Padagentskap Beperk The South African National Roads Agency Limited</p>	<p>Die figuur getoon The figure shown</p> 	<p>steldie padreserwe voor van 'n gedeelte represents the road reserve of a portion van Nasionale Roete N7 Seksie 8 of National Route N7 Section 8</p>	<p>Vel Sheet 8 van of 37 Plan P629/07</p>
--	---	--	---

D.O.9.A

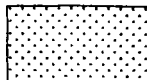


<p>Die Suid Afrikaanse Nasionale Padagentskop Beperk The South African National Roads Agency Limited</p>	<p>Die figuur getoon The figure shown</p> <div style="border: 1px solid black; width: 50px; height: 30px; background-color: #e0e0e0; margin: 5px 0;"></div>	<p>steldie padreserwe voor van 'n gedeelte represents the road reserve of a portion van Nasionale Roete N7 Seksie of National Route Section 8</p>	<p>Vel van Sheet 9 of 37 Plan P629/07</p>
--	---	---	---



Die Suid Afrikaanse Nasionale Padagentskap Beperk  
 The South African National Roads Agency Limited

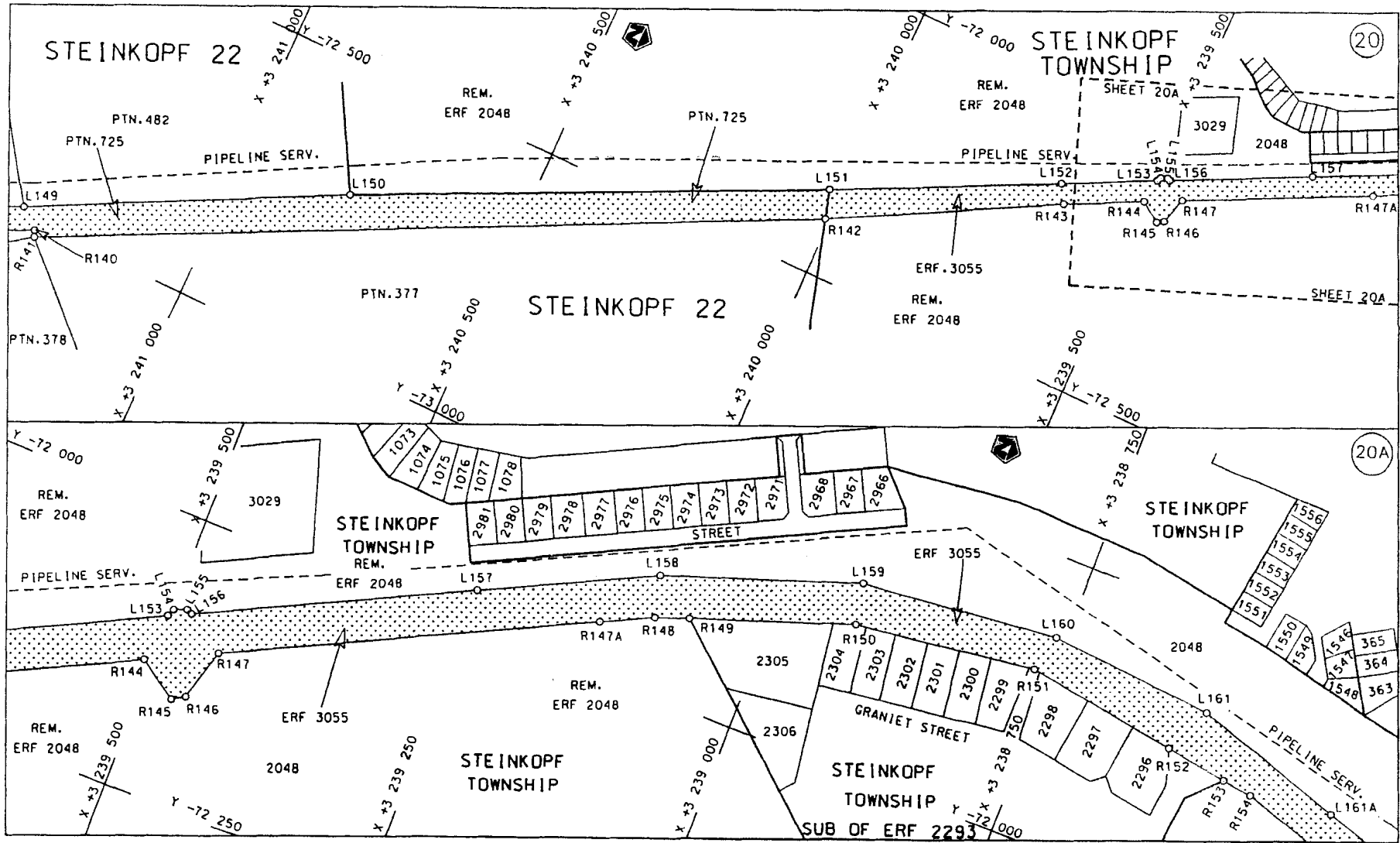
Die figuur getoon  
 The figure shown

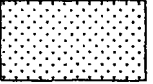


steldie padreserwe voor van 'n gedeelte  
 represents the road reserve of a portion  
 van Nasionale Roete N7 Sektie 8  
 of National Route N7 Section 8

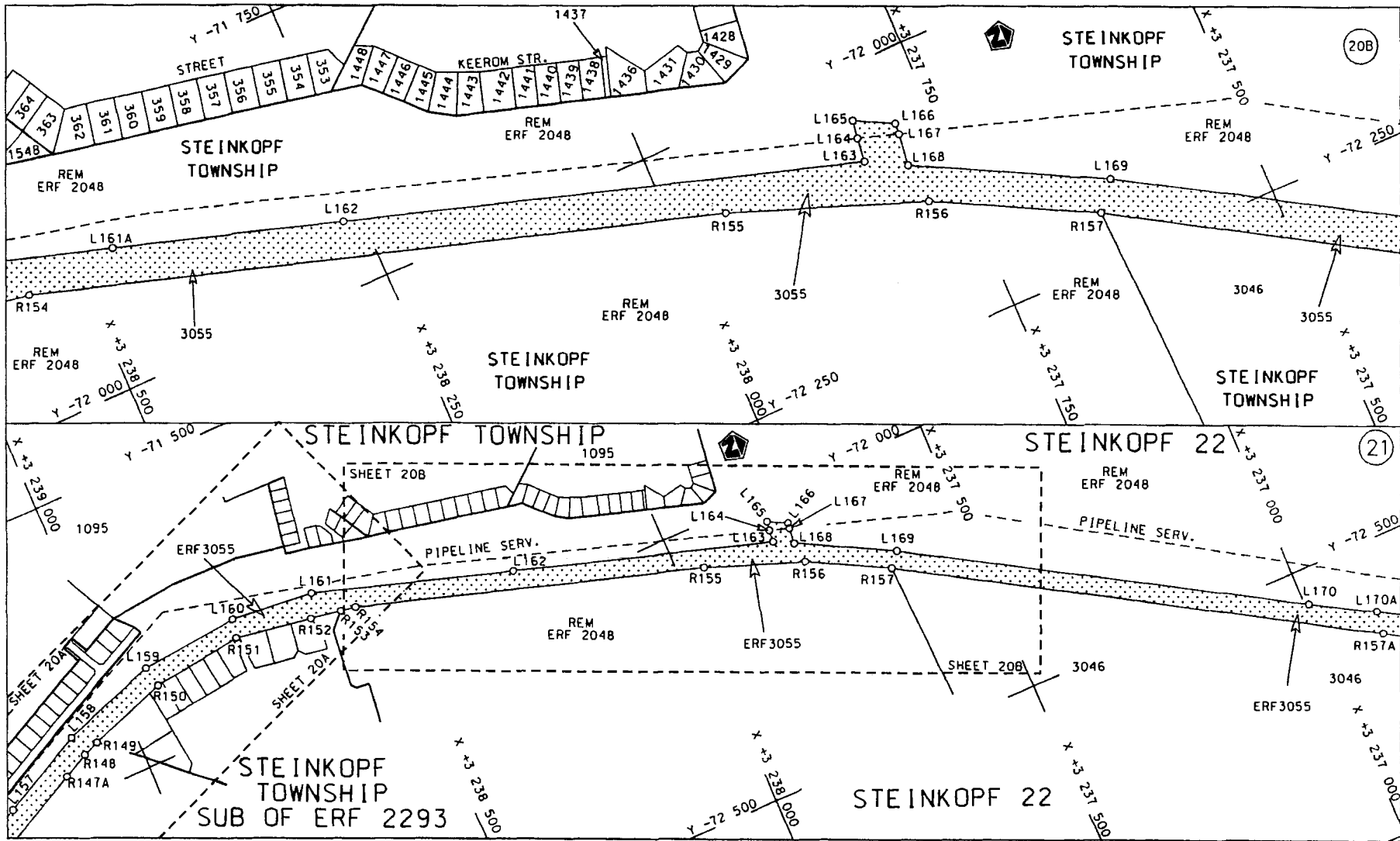
Vel van  
 Sheet 10 of 37  
 Plan P629/07

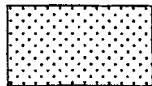
D.O.9.A



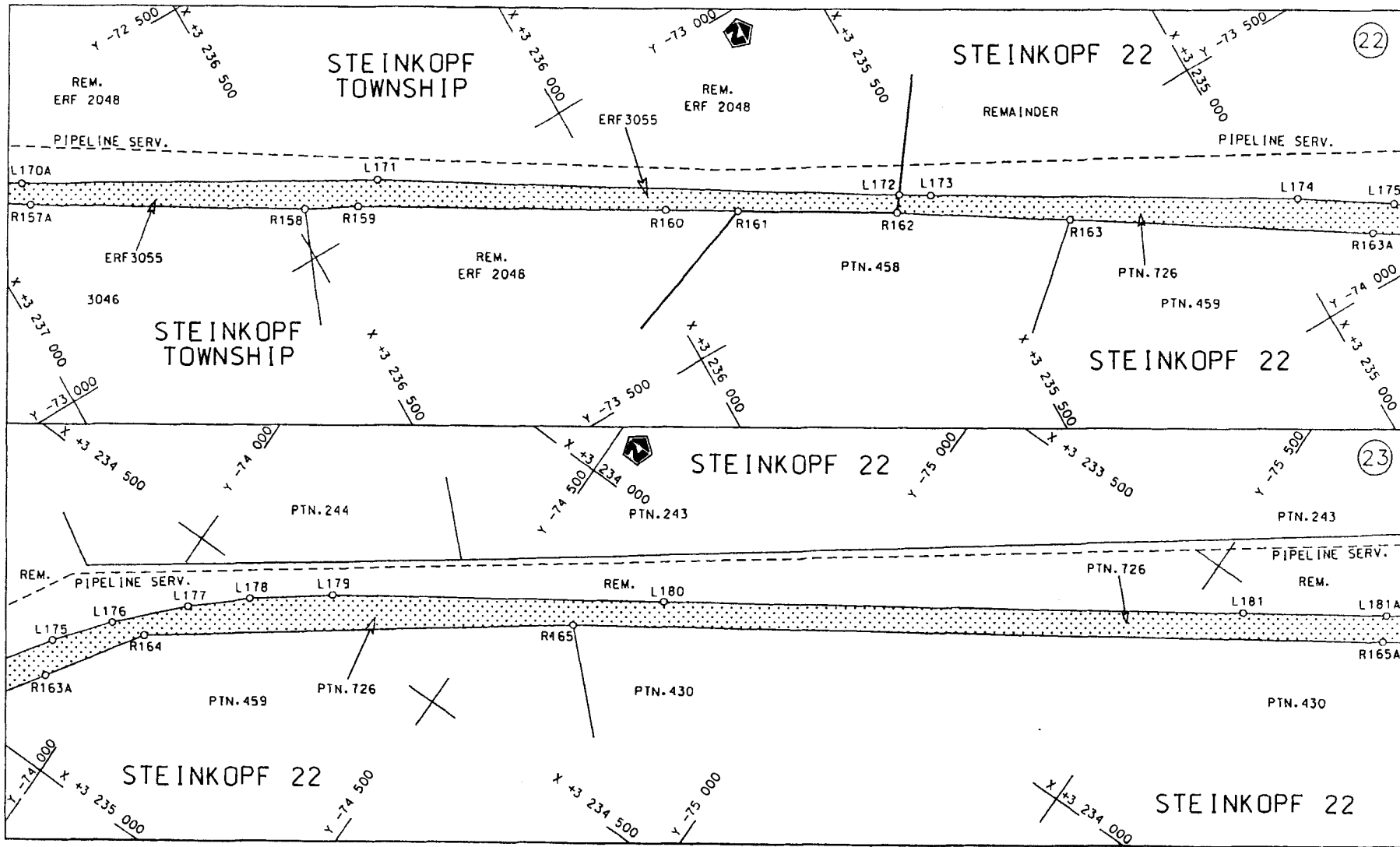
<p>Die Suid Afrikaanse Nasionale Padagentskap Beperk The South African National Roads Agency Limited</p>	<p>Die figuur getoon The figure shown</p> 	<p>steldie padreserwe voor van 'n gedeelte represents the road reserve of a portion von Nasionale Roete N7 Seksie of National Route 8 Section</p>	<p>Vel Sheet 11 van 37 Plan P629/07</p>
--	---	---	---

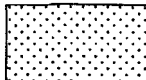
D.O.9.A

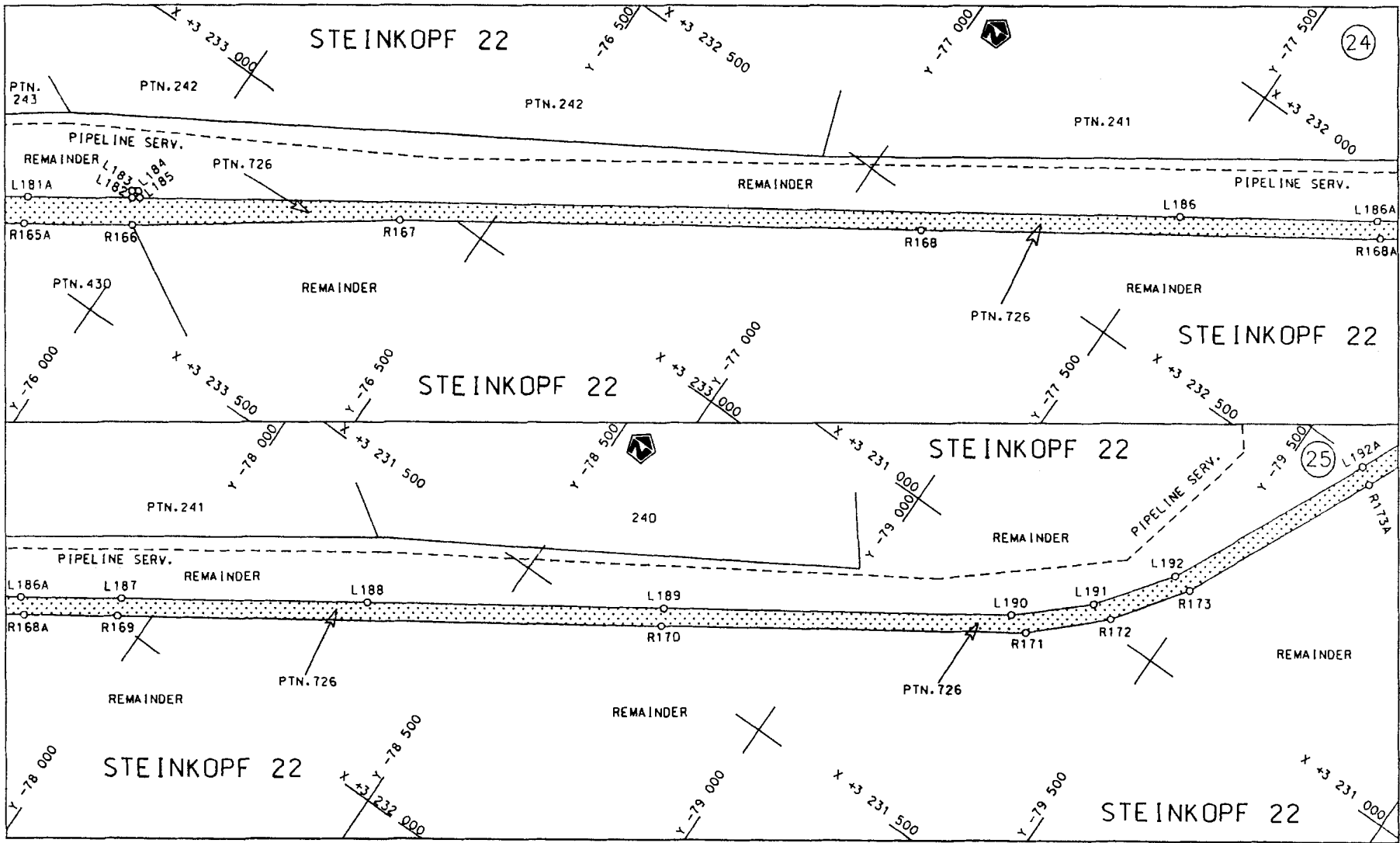


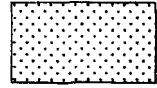
<p>Die Suid Afrikaanse Nasionale Padogentskop Beperk The South African National Roads Agency Limited</p>	<p>Die figuur getoon The figure shown</p> 	<p>steldie podreserwe voor van 'n gedeelte represents the road reserve of a portion van Nasionale Raete N7 Seksie of National Route Section 8</p>	<p>Vel Sheet 12 van of 37 Plan P629/07</p>
--	---	---	--

D.O.9.A

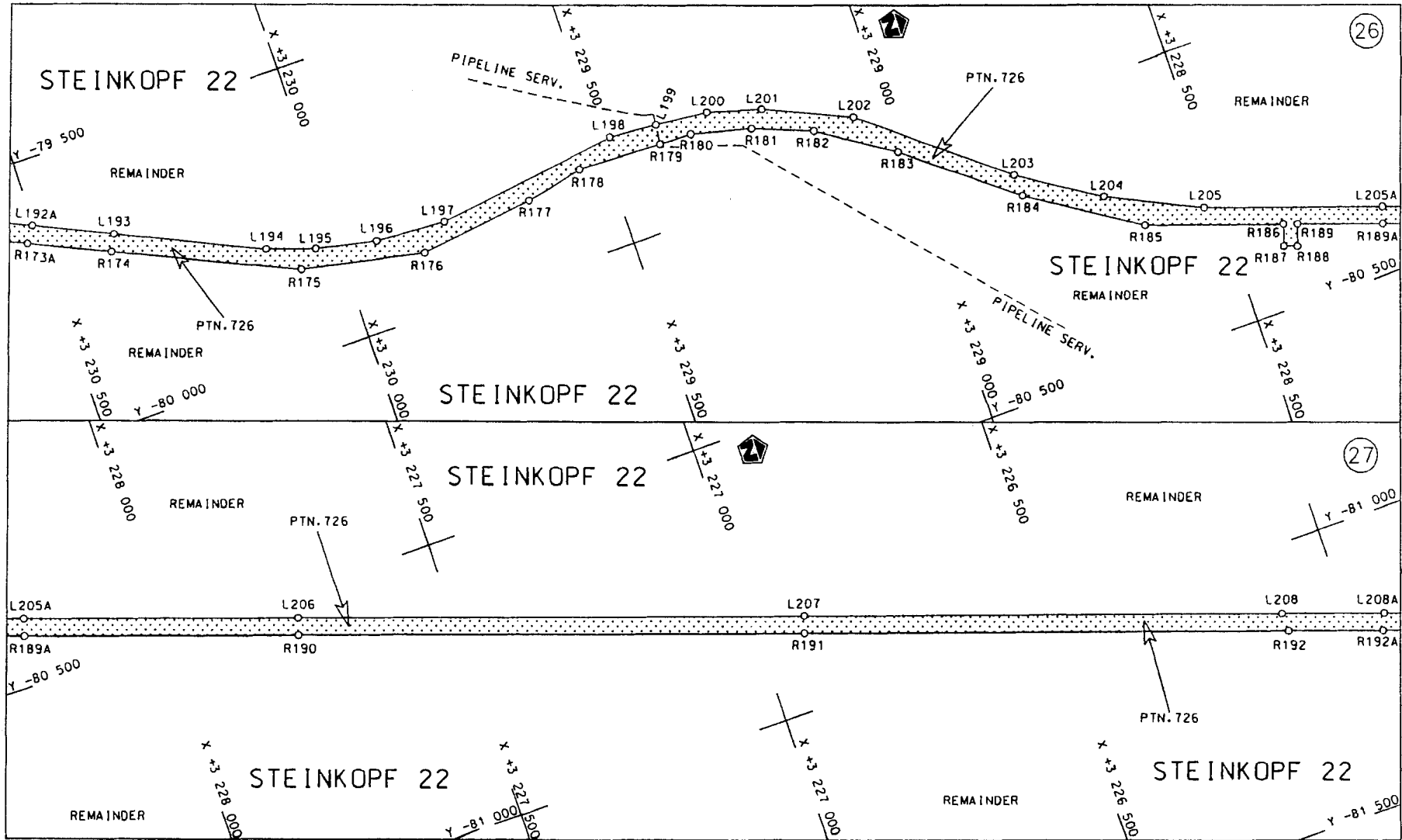


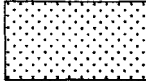
<p>Die Suid Afrikaanse Nasionale Padagentskap Beperk The South African National Roads Agency Limited</p>	<p>Die figuur getoon The figure shown</p> 	<p>steldie padreserwe voor van 'n gedeelte represents the road reserve of a portion van Nasionale Roete N7 Seksie 8 of National Route N7 Section 8</p>	<p>Vel Sheet 13 van 37 Plan P629/07</p>
--	---	--	---



Die Suid Afrikaanse Nasionale Padogentskap Beperk The South African National Roads Agency Limited	Die figuur getoon The figure shown	 steldie padreserwe voor van 'n gedeelte represents the road reserve of a portion van Nasionale Roete of National Route	Vel Sheet 14 van of 37 Plan P629/07
			N7      Seksie      8 Section

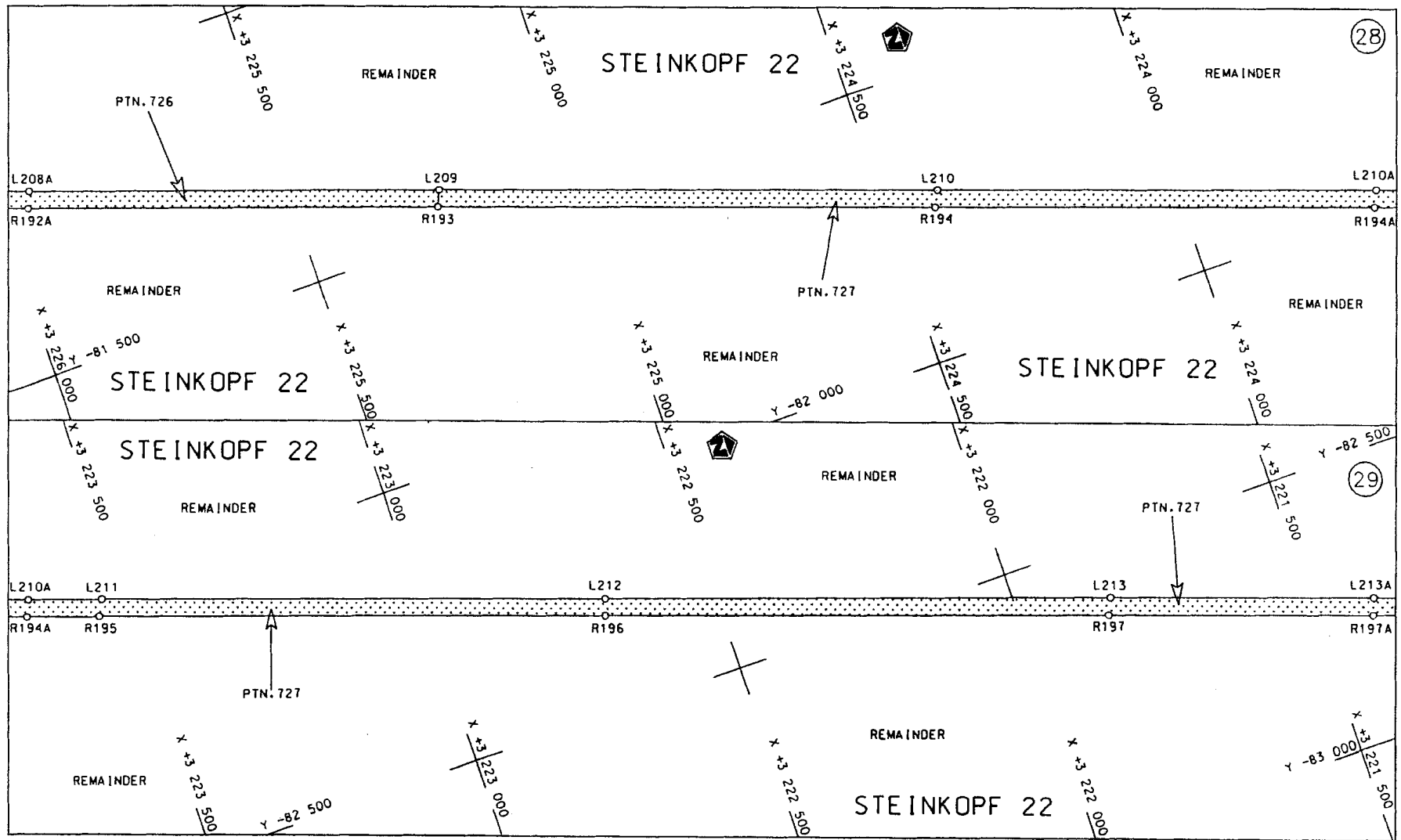
D.O.9.A



<p>Die Suid Afrikaanse Nasionale Padagentskop Beperk The South African National Roads Agency Limited</p>	<p>Die figuur getoon The figure shown</p>		<p>stel die padreserwe voor van 'n gedeelte represents the road reserve of a portion van Nasionale Roete N7 Seksie 8 of National Route N7 Section 8</p>	<p>Vel Sheet 15 van 37 Plan P629/07</p>
--	---	---	---	---

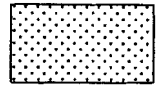
D.O.9.A





Die Suid Afrikaanse Nasionale Padagentskap Beperk  
The South African National Roads Agency Limited

Die figuur getoon  
The figure shown

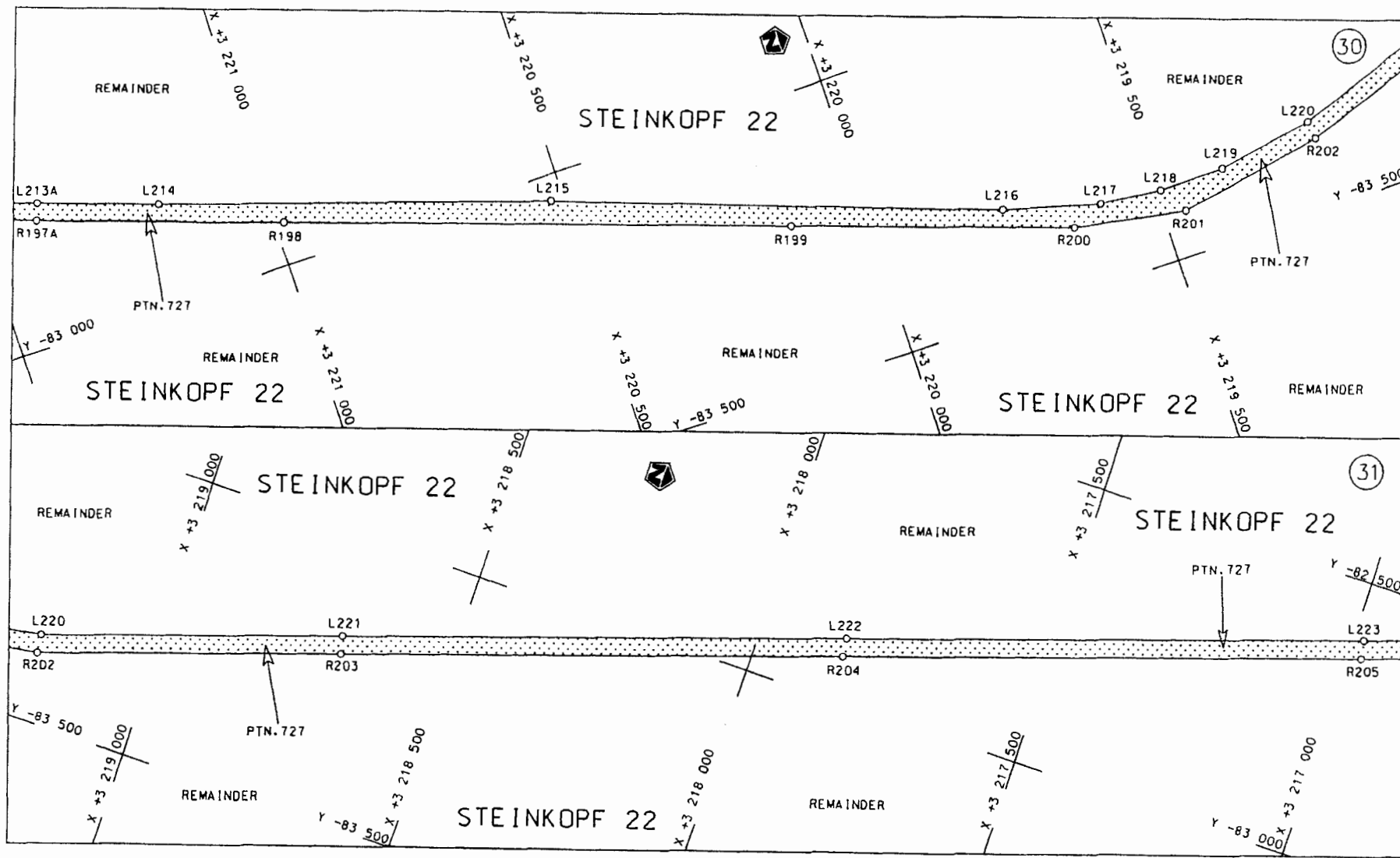


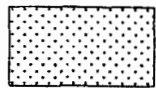
steldie padreserwe voor van 'n gedeelte  
represents the road reserve of a portion  
van Nasionale Raete N7 Sektie  
of National Route N7 Section

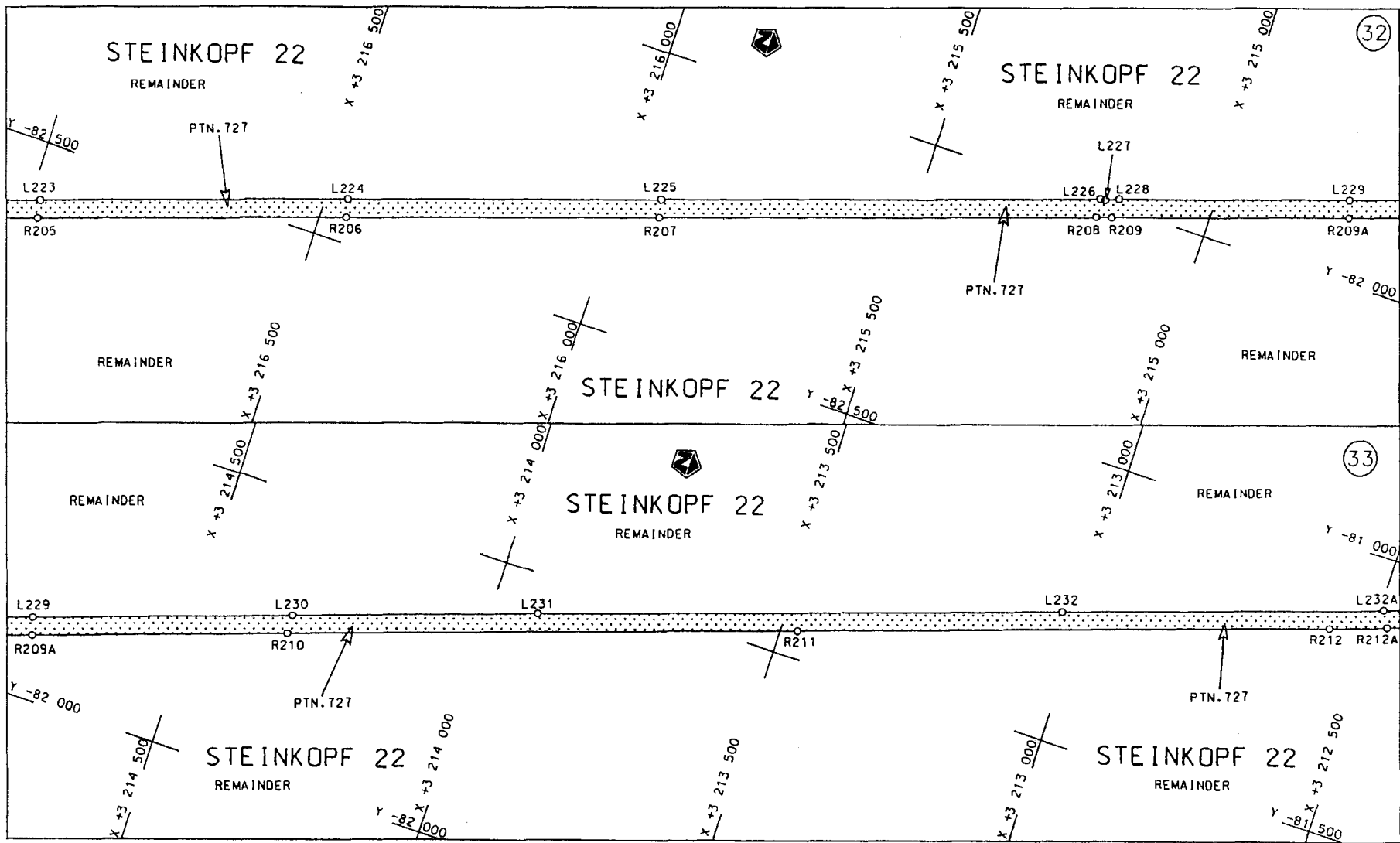
8

Vel Sheet 16 van of 37  
Plan P629/07

D.O.9.A

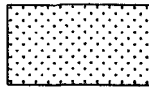


<p>Die Suid Afrikaanse Nasionale Padagentskop Beperk The South African National Roads Agency Limited</p>	<p>Die figuur getoon The figure shown</p>		<p>stel die padreserwe voor van 'n gedeelte represents the road reserve of a portion van Nasionale Roete N7 of National Route N7</p>	<p>8</p>	<p>Vel Sheet 17 van 37 of 37</p>
					<p>Plan P629/07</p>



Die Suid Afrikaanse Nasionale Padogentskap Beperk  
The South African National Roads Agency Limited

Die figuur getoon  
The figure shown



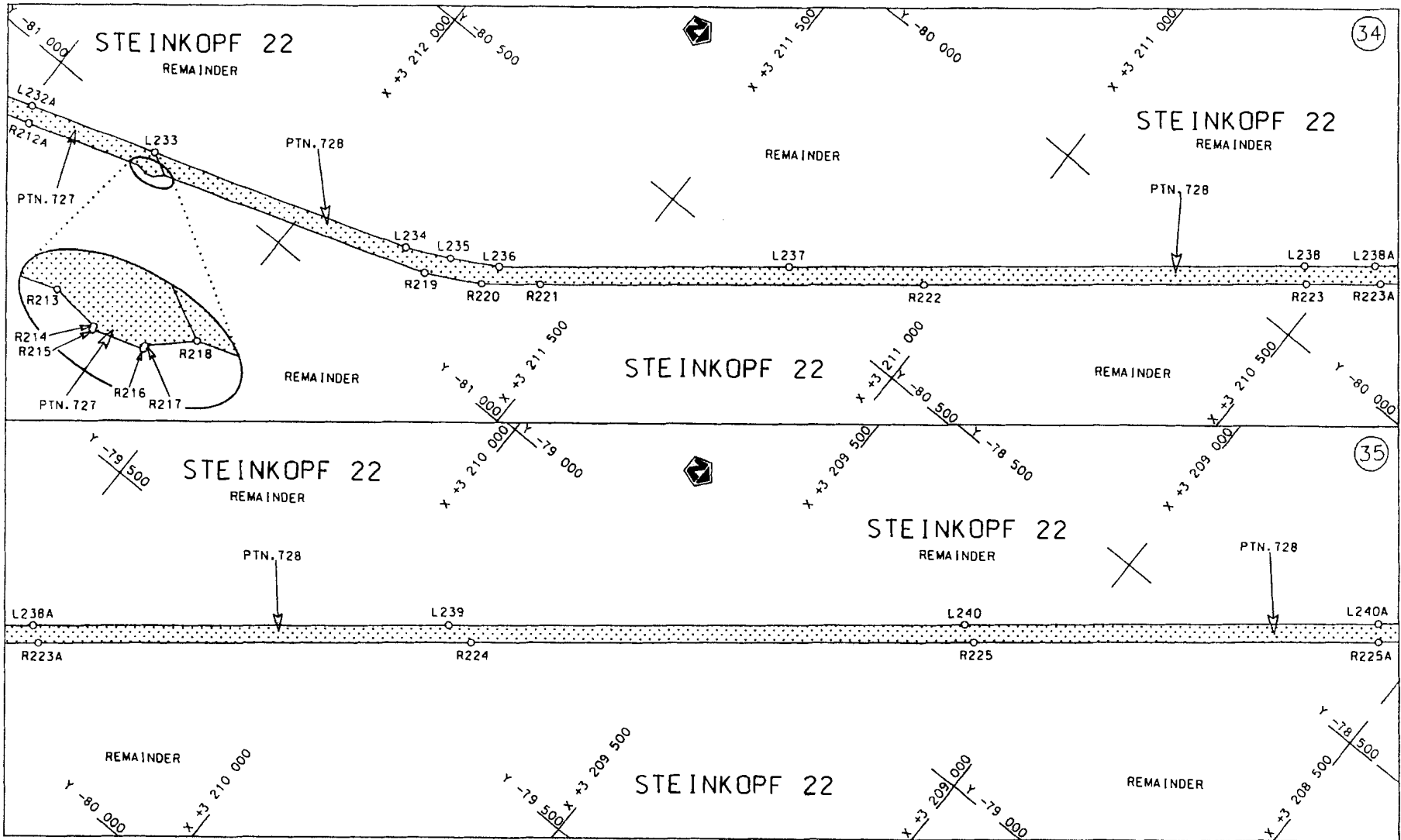
steldie padreserwe voor van 'n gedeelte  
represents the road reserve of a portion  
van Nasionale Roete of National Route N7

Seksie 8

Vel Sheet 18 van 37  
of

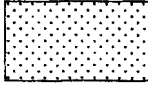
Plan P629/07

D.O.9.A



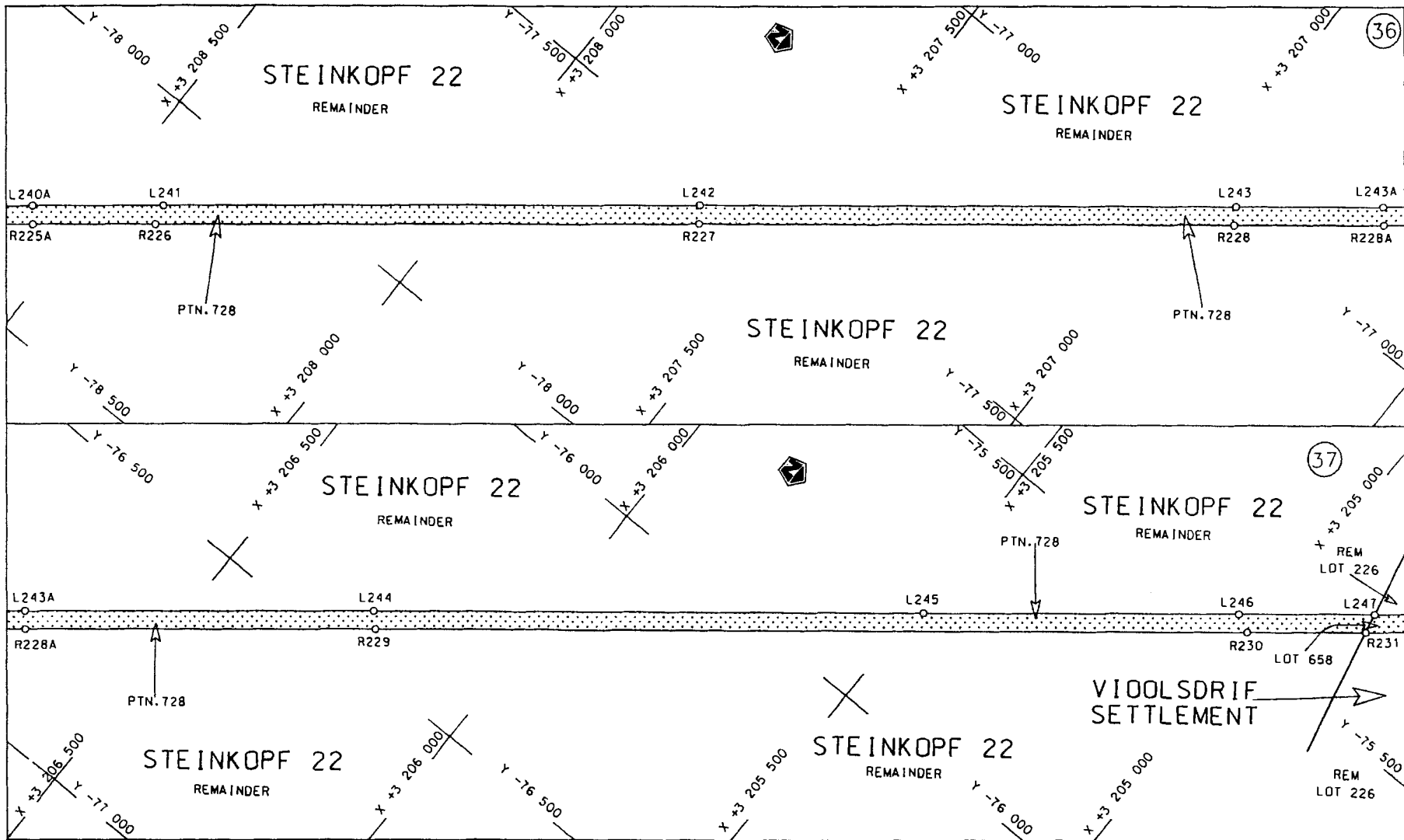
Die Suid Afrikaanse Nasionale Padagentskap Beperk  
The South African National Roads Agency Limited

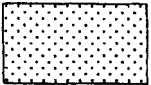
Die figuur getoon  
The figure shown



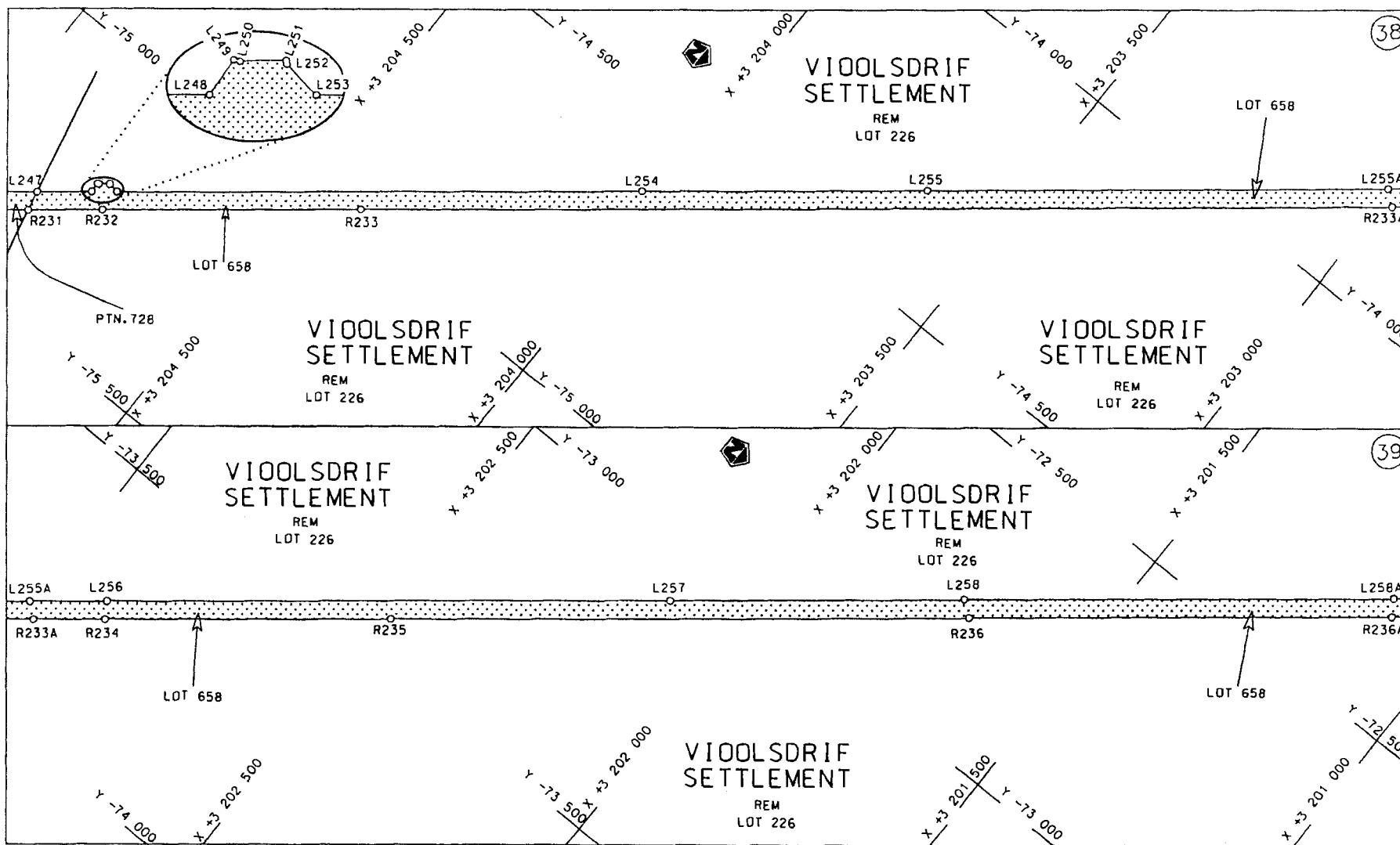
steldie padreserwe voor van 'n gedeelte  
represents the road reserve of a portion  
van Nasionale Roete N7 Seksie  
of National Route N7 Section 8

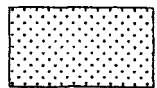
Vel  
Sheet 19 van  
of 37  
Plan P629/07



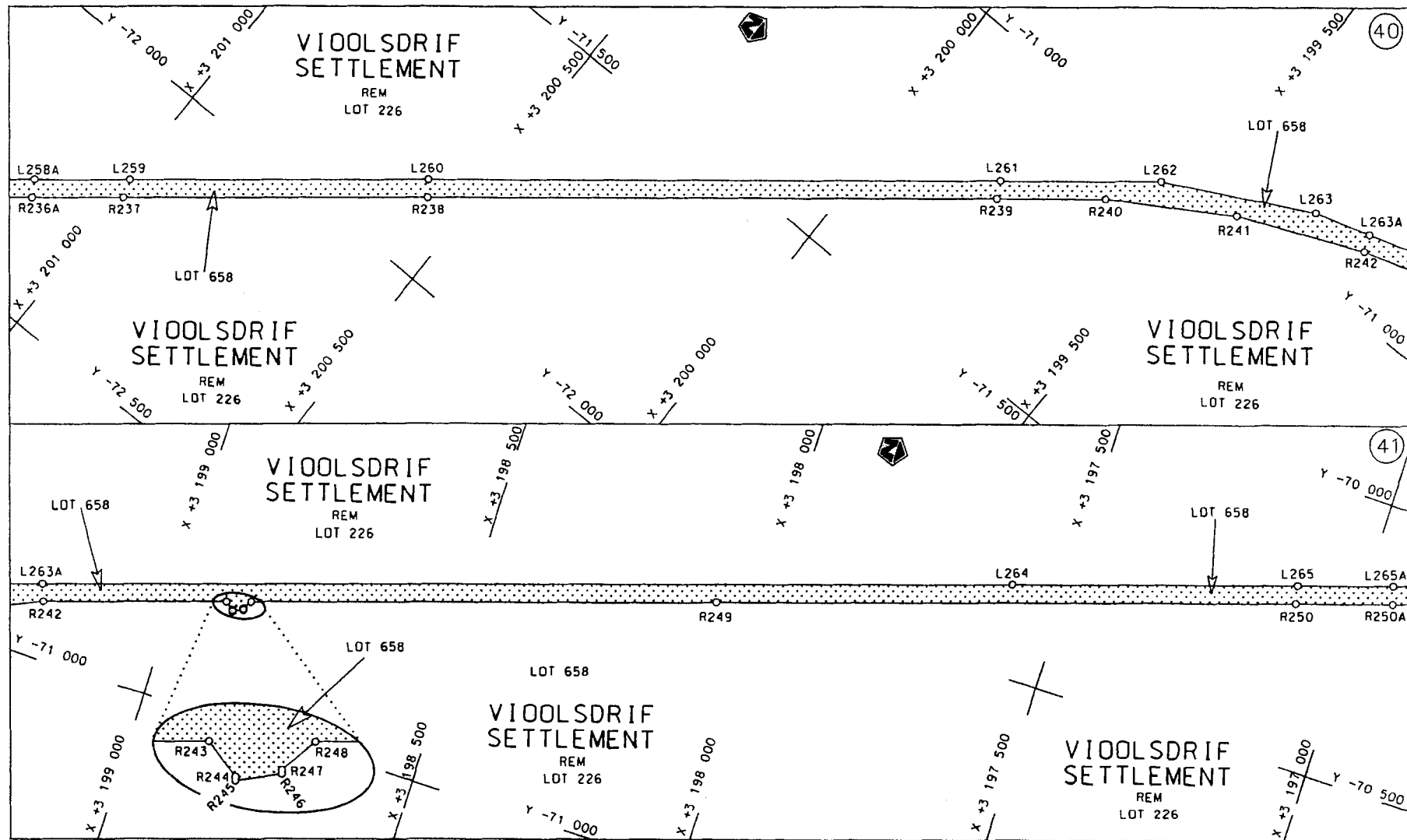
<p>Die Suid Afrikaanse Nasionale Padagentskap Beperk The South African National Roads Agency Limited</p>	<p>Die figuur getoon The figure shown</p> 	<p>steldie padreserwe voor van 'n gedeelte represents the road reserve of a portion van Nasionale Roete of National Route N7</p> <p>Seksie Section 8</p>	<p>Vel Sheet 20 van of 37 Plan P629/07</p>
--	---	--	--

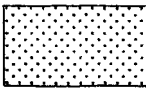
D.O.9.A



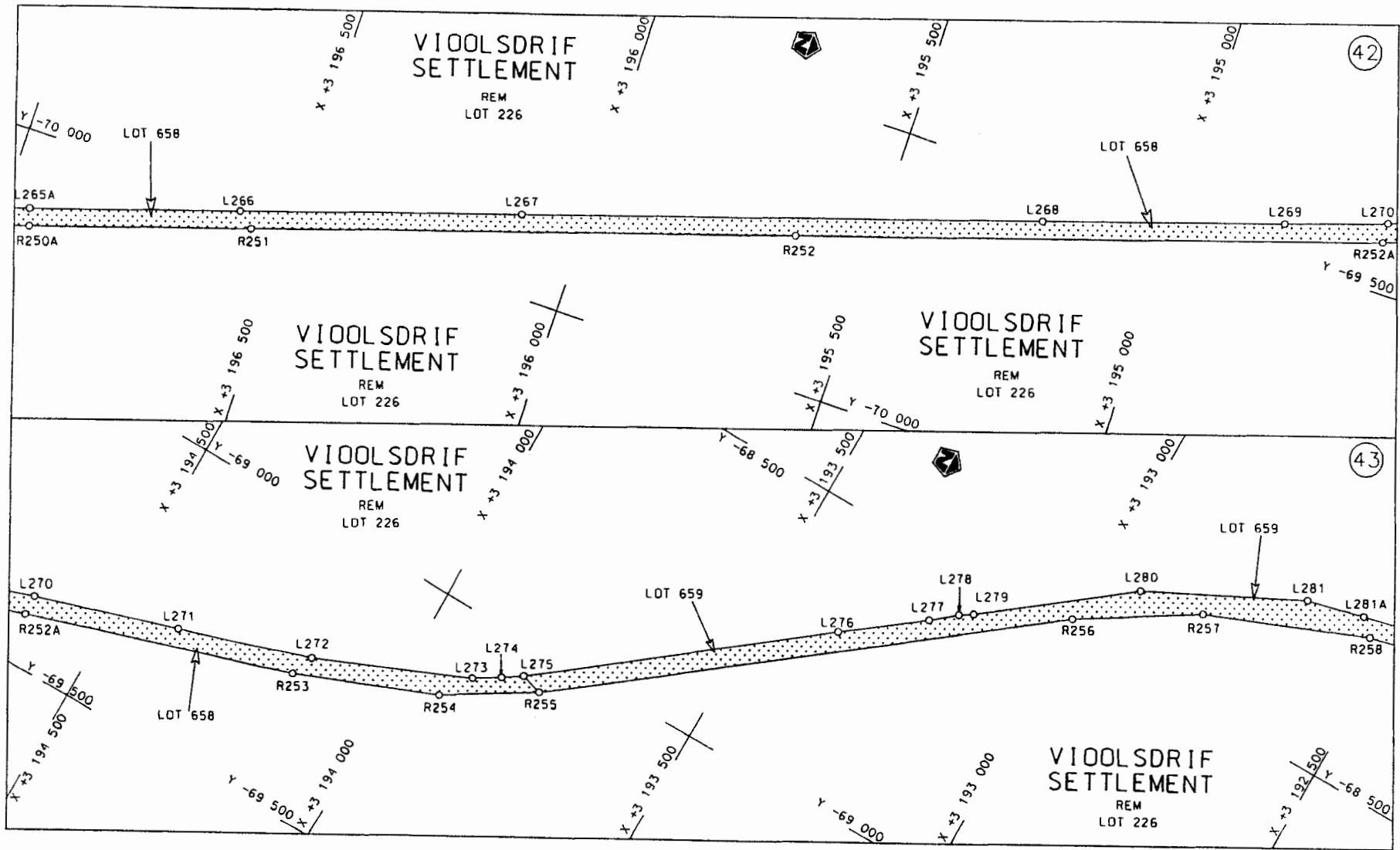
<p>Die Suid Afrikaanse Nasionale Padagentskap Beperk The South African National Roads Agency Limited</p>	<p>Die figuur getoon The figure shown</p> 	<p>steldie padreserwe voor van 'n gedeelte represents the road reserve of a portion van Nasionale Roete N7 Seksie 8 of National Route Section</p>	<p>Vel Sheet 21 van of 37 Plan P629/07</p>
--	---	---	--

D.O.9.A



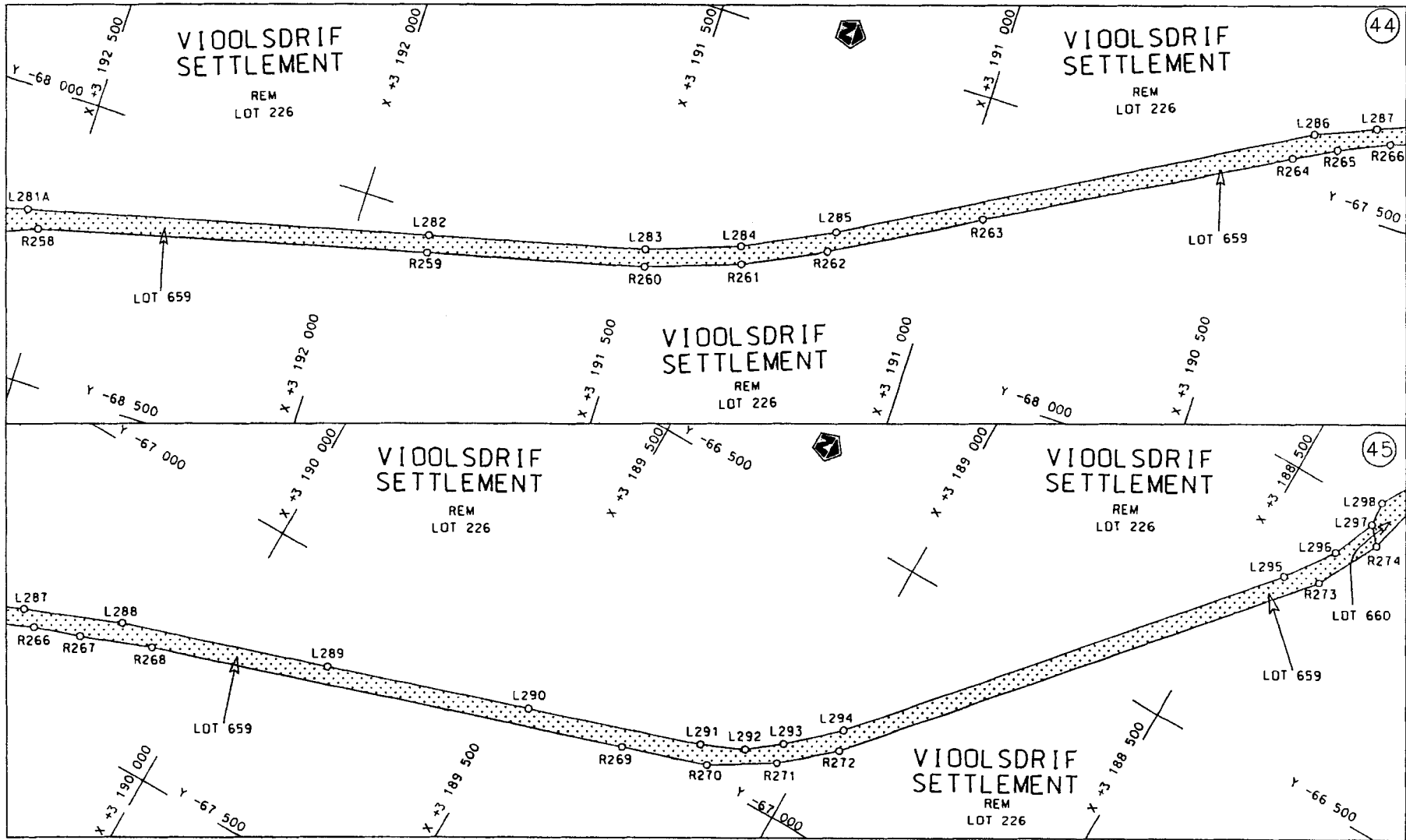
<p>Die Suid Afrikaanse Nasionale Padogentskap Beperk The South African National Roads Agency Limited</p>	<p>Die figuur getoon The figure shown</p>		<p>steldie padreserwe voor van 'n gedeelte represents the road reserve of a portion van Nasionale Roete N7 of National Route N7</p> <p>Seksie 8 Section 8</p>	<p>Vel Sheet 22 van of 37 Plan P629/07</p>
--	---	---	---	--

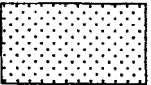
D.O.9.A



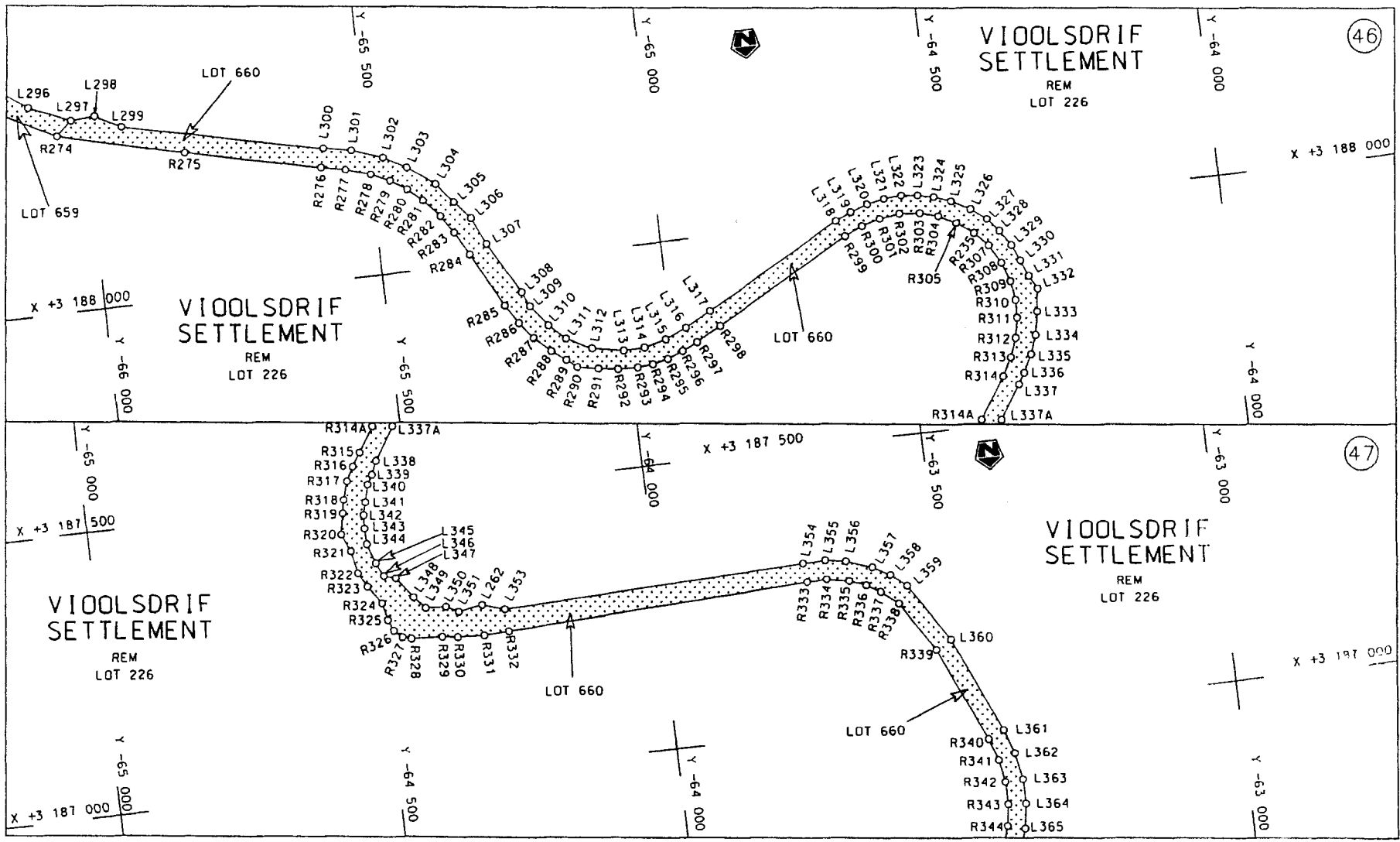
<p>Die Suid Afrikaanse Nasionale Padagentskap Beperk The South African National Roads Agency Limited</p>	<p>Die figuur getoon The figure shown</p>		<p>steldie podreserwe voor van 'n gedeelte represents the road reserve of a portion van Nasionale Roete N7 of National Route Section</p>	<p>Vel Sheet 23 van 37 of</p>
			<p>8</p>	<p>Plan P629/07</p>





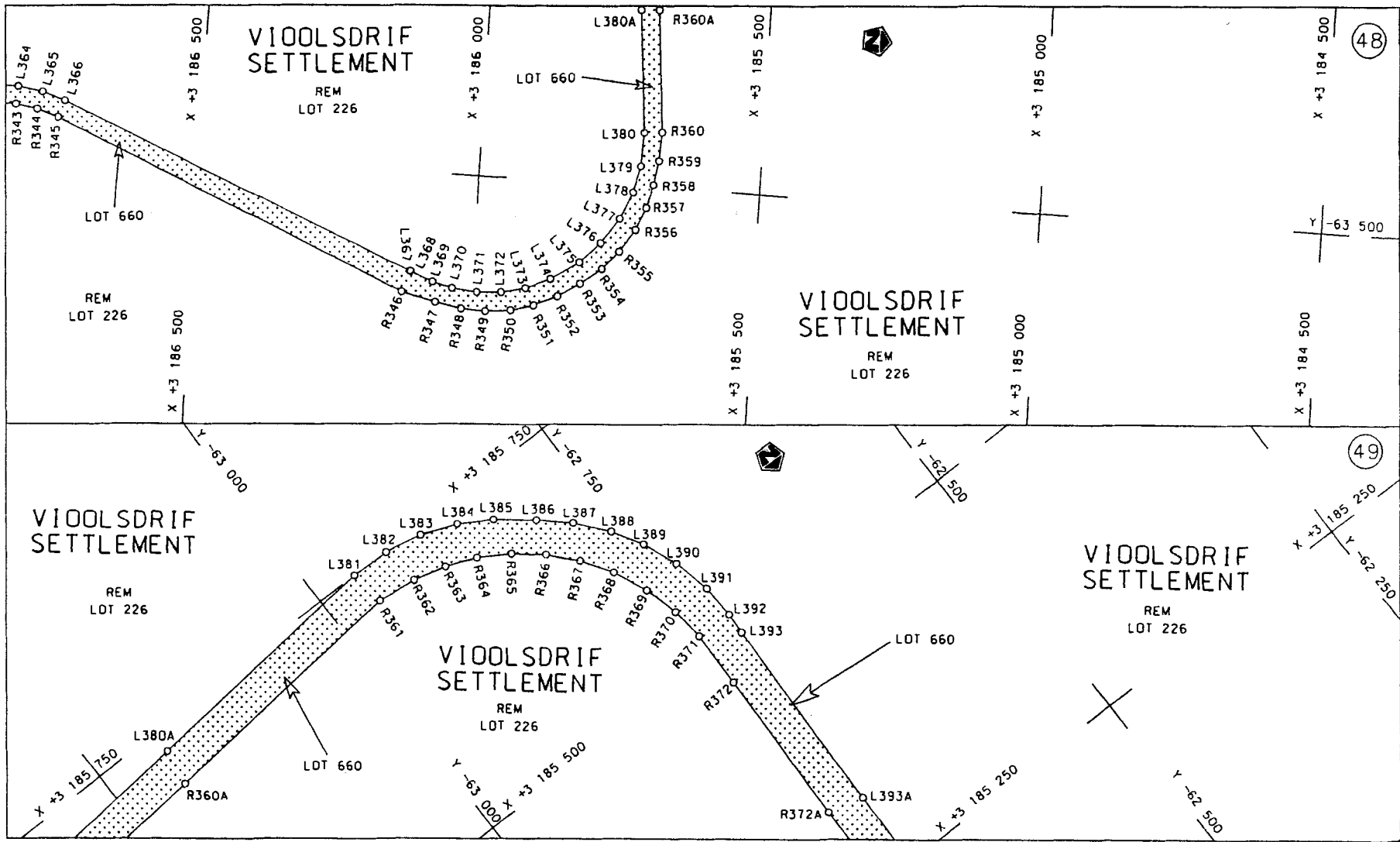
<p>Die Suid Afrikaanse Nasionale Padagentskap Beperk The South African National Roads Agency Limited</p>	<p>Die figuur getoon The figure shown</p> 	<p>stel die padreserwe voor van 'n gedeelte represents the road reserve of a portion van Nasionale Roete N7 Seksie Section of National Route 8</p>	<p>Vel van Sheet 24 of 37 Plan P629/07</p>
--	---	--	--


D.O.9.A



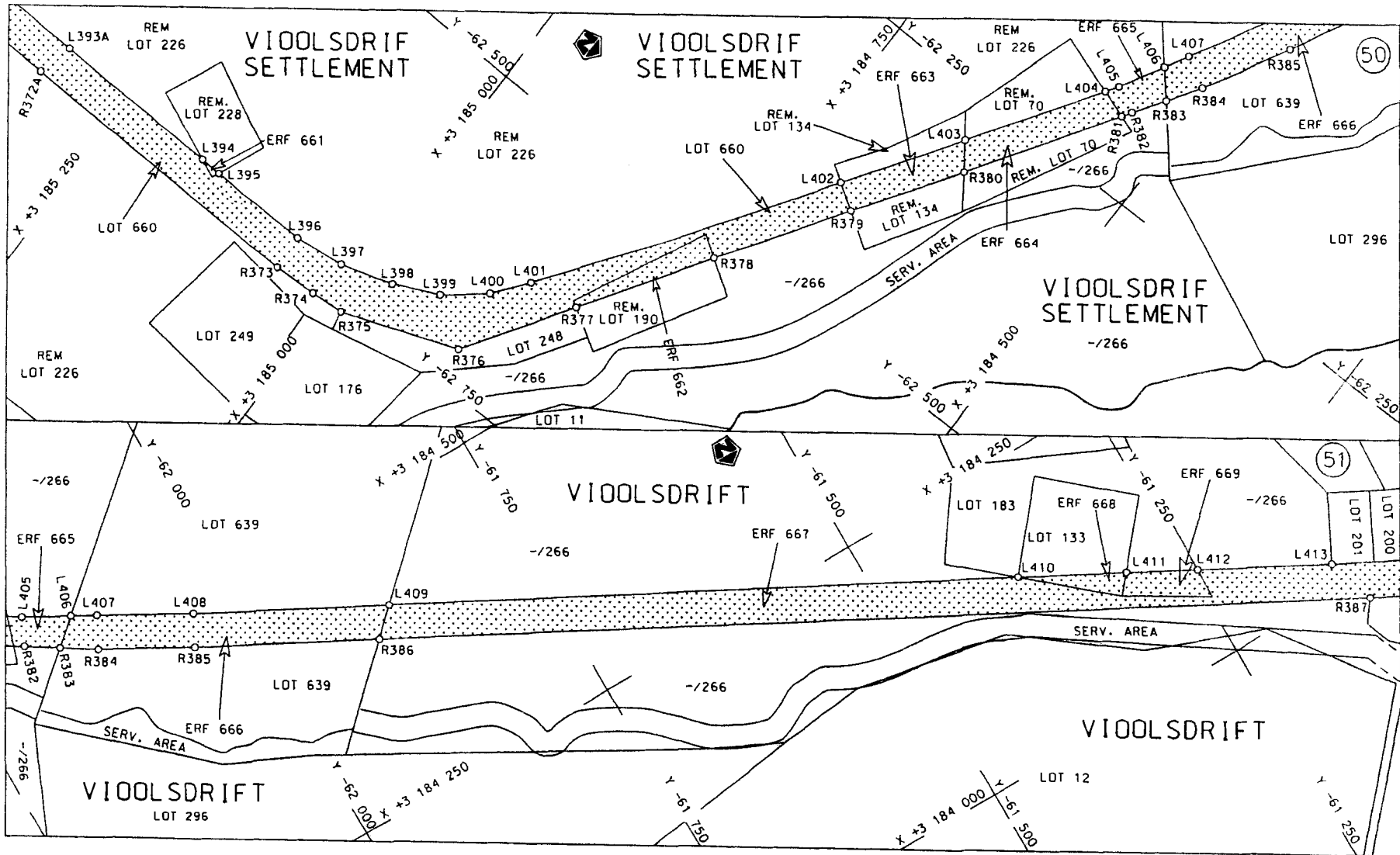
<p>Die Suid Afrikaanse Nasionale Padagentskap Beperk The South African National Roads Agency Limited</p>	<p>Die figuur getoon The figure shown</p>		<p>steldie padreserve voor van 'n gedeelte represents the road reserve of a portion van Nasionale Roete N7 of National Route N7</p> <p>Seksie 8 Section 8</p>	<p>Vel Sheet 25 van 37 of 37</p>
				<p>Plan P629/07</p>

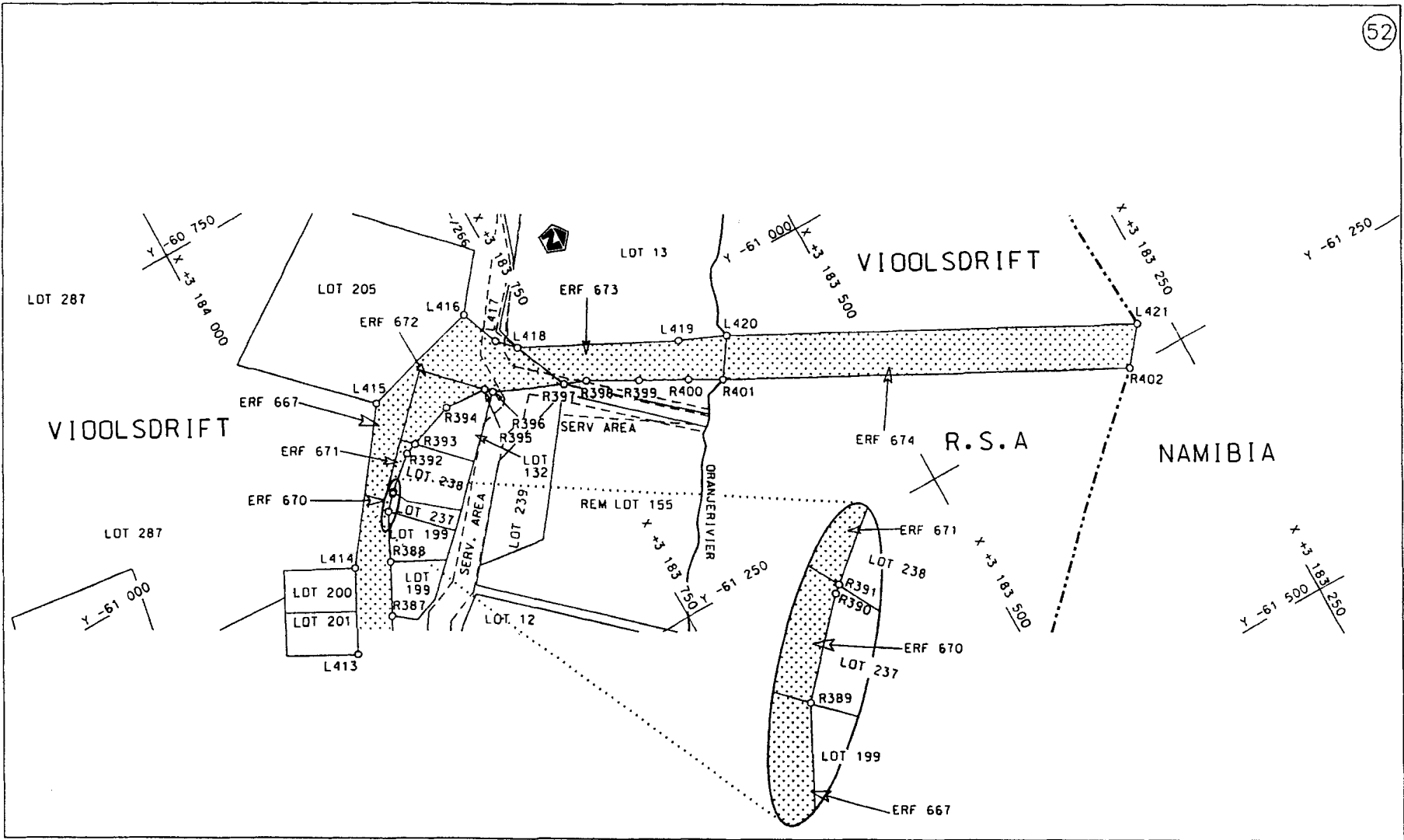
D.O.9.A



Die Suid Afrikaanse Nasionale Padogentskap Beperk The South African National Roads Agency Limited	Die figuur getoon The figure shown		steldie podreserwe voor van 'n gedeelte represents the road reserve of a portion van Nasionale Roete N7 Sektie 8 of National Route N7 Section 8	Vel Sheet 26 van 37 Plan P629/07
--	---------------------------------------	---	--	-------------------------------------

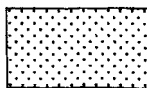
D.O.9.A





Die Suid Afrikaanse Nasionale Padogentskap Beperk  
The South African National Roads Agency Limited

Die figuur getoon  
The figure shown



stel die padreserwe voor van 'n gedeelte  
represents the road reserve of a portion  
van Nasionale Roete  
of National Route N7

Seksie  
Section 8

Vel Sheet	28 of	van 37
Plan	P629/07	

D.O.9.A

PADRESERWE KOÖRDINATE				ROAD RESERVE CO-ORDINATES			
LINKERKANT/LEFT HAND SIDE				REGTERKANT/RIGHT HAND SIDE			
	Y	X	WG 17°		Y	X	
L1	-86 623.87	3 283	462.20	R1	-86 843.18	3 283	393.00
L2	-86 615.02	3 283	438.58	R2	-86 835.90	3 283	369.46
L3	-86 655.58	3 283	425.78	R3	-86 808.51	3 283	377.93
L4	-86 651.86	3 283	405.68	R4	-86 786.84	3 283	372.51
L5	-86 639.48	3 283	366.29	R5	-86 701.89	3 283	270.56
L6	-86 623.29	3 283	322.84	R6	-86 569.45	3 283	078.65
L7	-86 602.69	3 283	281.36	R7	-86 480.81	3 282	931.00
L8	-86 413.01	3 282	951.84	R8	-86 466.15	3 282	906.70
L9	-86 394.79	3 282	919.85	R9	-86 397.71	3 282	793.65
L10	-86 284.81	3 282	720.93	R10	-86 360.30	3 282	723.33
L11	-86 282.26	3 282	712.59	R11	-86 354.32	3 282	709.20
L12	-86 273.70	3 282	684.64	R12	-86 333.73	3 282	660.57
L13	-86 264.90	3 282	652.57	R13	-86 317.40	3 282	604.58
L14	-86 246.83	3 282	586.14	R14	-86 307.34	3 282	570.01
L15	-86 225.58	3 282	508.05	R15	-86 293.16	3 282	525.28
L16	-86 189.81	3 282	302.12	R16	-86 266.41	3 282	370.23
L17	-86 169.87	3 282	238.22	R17	-86 241.98	3 282	254.02
L18	-86 118.89	3 282	110.74	R18	-86 164.31	3 282	065.73
L19	-86 094.80	3 282	068.60	R19	-86 096.00	3 281	936.48
L20	-86 065.99	3 282	010.56	R20	-85 935.03	3 281	619.67
L21	-86 011.34	3 281	912.57	R21	-85 884.98	3 281	514.12
L22	-85 985.93	3 281	866.64	R22	-85 867.30	3 281	476.16
L23	-85 878.99	3 281	711.18	R23	-85 829.04	3 281	383.77
L24	-85 809.63	3 281	626.92	R24	-85 793.69	3 281	297.87
L25	-85 664.75	3 281	480.17	R25	-85 787.40	3 281	282.62
L26	-85 665.54	3 281	473.77	R26	-85 783.72	3 281	262.09
L27	-85 652.85	3 281	456.19	R27	-85 798.76	3 281	242.54
L28	-85 628.63	3 281	462.88	R28	-85 773.83	3 281	223.35
L29	-85 613.27	3 281	482.12	R29	-85 758.89	3 281	228.25
L30	-85 591.09	3 281	461.07	R30	-85 691.49	3 281	123.71
L31	-85 615.58	3 281	428.99	R31	-85 633.96	3 281	034.39
L32	-85 579.46	3 281	379.03	R32	-85 591.58	3 280	968.52
L33	-85 563.76	3 281	343.43	R33	-85 547.99	3 280	880.36
L34	-85 565.02	3 281	304.92	R34	-85 513.57	3 280	843.88
L35	-85 585.84	3 281	213.79	R35	-85 493.15	3 280	802.34
L36	-85 587.45	3 281	174.91	R36	-85 466.28	3 280	637.26
L37	-85 576.78	3 281	137.05	R37	-85 431.02	3 280	457.41
L38	-85 512.08	3 280	989.44	R38	-85 389.84	3 280	261.23
L39	-85 476.45	3 280	892.23	R39	-85 352.85	3 280	082.90
L40	-85 449.23	3 280	812.99	R40	-85 203.99	3 279	373.82
L41	-85 423.84	3 280	719.52	R41	-85 086.69	3 278	816.27
L42	-85 385.18	3 280	544.22	R42	-84 994.49	3 278	373.67
L43	-85 347.81	3 280	368.42	R43	-84 921.34	3 278	031.90
L44	-85 276.32	3 280	027.35	R44	-84 879.85	3 277	838.19
L45	-85 241.60	3 279	863.77	R45	-84 841.26	3 277	663.16
L46	-85 207.28	3 279	700.65	R46	-84 810.73	3 277	514.66
L47	-85 131.12	3 279	336.42	R47	-84 776.44	3 277	321.89
L48	-85 059.28	3 278	994.13	R48	-84 735.32	3 277	041.11
L49	-84 943.40	3 278	442.67	R49	-84 734.70	3 277	036.83
L50	-84 931.94	3 278	388.25	R50	-84 744.96	3 276	933.36
L51	-84 872.92	3 278	104.86	R51	-84 728.72	3 276	870.13

Vel	29	Van	37	P629/07
Sheet		of		

PADRESERWE KOÖRDINATE				/	ROAD RESERVE CO-ORDINATES			
LINKERKANT/LEFT HAND SIDE					REGTERKANT/RIGHT HAND SIDE			
	Y	X	WG	17°	Y	X		
L52	-84 757.79	3 277	556.35	R52	-84 732.16	3 276	857.61	
L53	-84 732.32	3 277	457.04	R53	-84 704.82	3 276	795.51	
L54	-84 715.95	3 277	396.59	R54	-84 677.36	3 276	734.53	
L55	-84 673.87	3 277	256.32	R55	-84 570.53	3 276	357.17	
L56	-84 592.42	3 277	079.26	R56	-84 448.88	3 275	772.61	
L57	-84 504.43	3 276	912.67	R57	-84 400.06	3 275	474.40	
L58	-84 487.91	3 276	899.63	R58	-84 203.93	3 274	058.55	
L59	-84 460.91	3 276	898.81	R59	-84 211.99	3 274	060.28	
L60	-84 472.90	3 276	887.70	R60	-84 202.90	3 274	050.72	
L61	-84 508.92	3 276	854.29	R61	-84 178.87	3 273	881.77	
L62	-84 544.94	3 276	796.82	R62	-84 140.75	3 273	603.66	
L63	-84 560.15	3 276	676.04	R63	-84 129.49	3 273	526.31	
L64	-84 546.88	3 276	580.93	R64	-84 105.60	3 273	348.18	
L65	-84 525.74	3 276	464.03	R65	-84 084.23	3 273	169.77	
L66	-84 524.73	3 276	452.35	R66	-84 087.54	3 272	991.65	
L67	-84 505.37	3 276	365.40	R67	-84 110.20	3 272	812.52	
L68	-84 467.66	3 276	269.26	R68	-84 129.14	3 272	673.14	
L69	-84 448.60	3 276	115.51	R69	-84 147.30	3 272	533.42	
L70	-84 423.92	3 276	000.88	R70	-84 165.97	3 272	335.00	
L71	-84 408.90	3 275	927.73	R71	-84 163.64	3 272	285.41	
L72	-84 381.87	3 275	755.38	R72	-84 172.26	3 272	286.43	
L73	-84 353.62	3 275	584.09	R73	-84 170.22	3 272	235.41	
L74	-84 325.85	3 275	401.61	R74	-84 152.26	3 272	023.01	
L75	-84 243.70	3 274	816.93	R75	-84 107.82	3 271	757.25	
L76	-84 219.50	3 274	638.63	R76	-83 847.80	3 270	217.85	
L77	-84 194.93	3 274	462.36	R77	-83 436.34	3 267	777.58	
L78	-84 141.59	3 274	071.00	R78	-83 368.25	3 267	373.92	
L79	-84 091.95	3 274	060.48	R79	-83 304.02	3 266	998.70	
L80	-84 093.07	3 274	037.48	R80	-83 264.76	3 266	864.61	
L81	-84 137.92	3 274	044.38	R81	-83 170.71	3 266	656.71	
L82	-84 090.52	3 273	702.93	R82	-83 052.17	3 266	491.26	
L83	-84 072.85	3 273	574.19	R83	-82 945.44	3 266	376.26	
L84	-84 047.17	3 273	396.39	R84	-82 573.24	3 266	039.49	
L85	-84 025.77	3 273	218.19	R85	-82 497.56	3 265	972.62	
L86	-84 025.15	3 272	988.33	R86	-82 359.30	3 265	810.43	
L87	-84 027.10	3 272	968.48	R87	-82 263.08	3 265	648.88	
L88	-84 050.40	3 272	790.00	R88	-82 105.35	3 265	353.16	
L89	-84 095.83	3 272	433.42	R89	-81 346.35	3 263	927.95	
L90	-84 112.22	3 272	286.23	R90	-81 281.06	3 263	805.05	
L91	-84 112.43	3 272	279.34	R91	-81 287.46	3 263	784.98	
L92	-84 108.03	3 272	132.46	R92	-81 280.27	3 263	775.19	
L93	-84 099.29	3 271	986.30	R93	-81 264.02	3 263	770.91	
L94	-84 070.48	3 271	762.98	R94	-81 190.98	3 263	624.67	
L95	-83 823.38	3 270	296.37	R95	-81 148.42	3 263	478.99	
L96	-83 727.59	3 269	729.45	R96	-81 129.98	3 263	327.77	
L97	-83 399.30	3 267	782.92	R97	-81 138.63	3 263	206.29	
L98	-83 348.57	3 267	482.70	R98	-81 235.07	3 261	906.39	
L99	-83 312.94	3 267	261.38	R99	-81 384.42	3 259	905.40	
L100	-83 262.85	3 266	989.70	R100	-81 392.40	3 259	714.55	
L101	-83 220.20	3 266	843.22	R101	-81 398.49	3 259	566.86	
L102	-83 126.34	3 266	652.45	R102	-81 421.61	3 259	312.34	

Vel	30	Van	37	P629/07
Sheet		of		

PADRESERWE KOÖRDINATE				/	ROAD RESERVE CO-ORDINATES			
LINKERKANT/LEFT HAND SIDE					REGTERKANT/RIGHT HAND SIDE			
	Y	X	WG	17°		Y	X	
L103	-83 015.72	3 266	503.67	R103	-81 441.99	3 259	252.03	
L104	-82 842.28	3 266	334.04	R104	-81 459.65	3 259	116.26	
L105	-82 603.83	3 266	117.72	R105	-81 479.53	3 258	996.10	
L106	-82 481.53	3 266	004.45	R106	-81 500.14	3 258	939.31	
L107	-82 420.29	3 265	947.08	R107	-81 474.52	3 258	881.68	
L108	-82 306.80	3 265	803.28	R108	-81 464.06	3 258	826.97	
L109	-82 221.61	3 265	652.90	R109	-81 441.86	3 258	740.81	
L110	-81 613.68	3 264	509.83	R110	-81 358.68	3 258	594.56	
L111	-81 425.81	3 264	155.62	R111	-80 262.81	3 257	386.66	
L112	-81 255.25	3 263	835.68	R112	-80 159.41	3 257	259.24	
L113	-81 233.63	3 263	823.93	R113	-80 102.20	3 257	177.44	
L114	-81 227.18	3 263	814.50	R114	-80 081.09	3 257	147.07	
L115	-81 230.75	3 263	788.81	R115	-79 997.90	3 257	003.91	
L116	-81 155.29	3 263	639.43	R116	-79 910.10	3 256	841.70	
L117	-81 110.09	3 263	478.61	R117	-79 669.19	3 256	377.16	
L118	-81 093.05	3 263	342.58	R118	-79 488.54	3 256	030.52	
L119	-81 104.65	3 263	167.60	R119	-79 347.41	3 255	757.49	
L120	-81 197.92	3 261	903.24	R120	-79 238.57	3 255	549.87	
L121	-81 361.20	3 259	709.89	R121	-79 164.03	3 255	400.18	
L122	-81 381.33	3 259	441.84	R122	-78 974.58	3 254	968.12	
L123	-81 410.63	3 259	203.92	R123	-78 624.08	3 254	163.54	
L124	-81 434.03	3 259	069.34	R124	-78 281.22	3 253	376.04	
L125	-81 390.53	3 258	724.95	R125	-78 221.71	3 253	199.09	
L126	-81 328.63	3 258	618.17	R126	-77 925.11	3 252	507.68	
L127	-80 233.75	3 257	410.81	R127	-77 104.70	3 250	619.97	
L128	-80 134.98	3 257	289.55	R128	-76 483.51	3 249	239.79	
L129	-80 039.66	3 257	152.17	R129	-76 138.75	3 248	409.88	
L130	-79 975.38	3 257	048.30	R130	-76 053.87	3 248	216.30	
L131	-79 473.51	3 256	081.83	R131	-75 521.06	3 247	001.10	
L132	-79 430.61	3 256	028.91	R132	-74 901.27	3 245	598.37	
L133	-79 121.52	3 255	417.63	R133	-74 847.78	3 245	494.07	
L134	-78 877.85	3 254	871.61	R134	-74 658.23	3 245	059.40	
L135	-78 569.19	3 254	185.63	R135	-74 440.16	3 244	558.40	
L136	-77 844.83	3 252	511.97	R136	-74 075.89	3 243	722.11	
L137	-77 308.81	3 251	273.91	R137	-73 739.34	3 242	949.09	
L138	-77 305.97	3 251	230.74	R138	-73 361.45	3 242	082.13	
L139	-77 117.49	3 250	798.07	R139	-73 153.35	3 241	604.80	
L140	-76 734.53	3 249	918.68	R140	-73 009.96	3 241	284.57	
L141	-76 346.66	3 249	028.28	R141	-73 020.64	3 241	279.79	
L142	-76 002.60	3 248	238.77	R142	-72 399.43	3 240	008.83	
L143	-75 996.11	3 248	243.89	R143	-72 198.25	3 239	635.13	
L144	-75 368.81	3 246	803.91	R144	-72 135.16	3 239	506.95	
L145	-74 967.29	3 245	892.81	R145	-72 159.00	3 239	471.44	
L146	-74 837.74	3 245	608.94	R146	-72 152.13	3 239	460.28	
L147	-73 872.77	3 243	355.97	R147	-72 105.41	3 239	446.70	
L148	-73 469.08	3 242	456.03	R148	-71 933.47	3 239	097.06	
L149	-72 980.21	3 241	319.74	R149	-71 923.20	3 239	068.15	
L150	-72 714.86	3 240	797.19	R150	-71 874.18	3 238	927.81	
L151	-72 348.24	3 240	023.76	R151	-71 853.04	3 238	765.86	
L152	-72 166.20	3 239	653.83	R152	-71 874.40	3 238	629.59	
L153	-72 090.96	3 239	501.23	R153	-71 882.95	3 238	575.29	

Vel	31	Van	37	P629/07
Sheet		of		



PADRESERWE KOÖRDINATE				/	ROAD RESERVE CO-ORDINATES			
LINKERKANT/LEFT HAND SIDE					REGTERKANT/RIGHT HAND SIDE			
	Y	X	WG	17°	Y	X		
L154	-72 084.04	3 239	498.21	R154	-71 887.29	3 238	548.10	
L155	-72 079.59	3 239	486.91	R155	-72 072.55	3 237	952.07	
L156	-72 081.70	3 239	482.05	R156	-72 135.49	3 237	782.76	
L157	-71 968.74	3 239	253.06	R157	-72 206.73	3 237	646.75	
L158	-71 896.67	3 239	106.24	R158	-72 916.30	3 236	473.67	
L159	-71 837.34	3 238	934.90	R159	-72 960.59	3 236	389.14	
L160	-71 819.73	3 238	758.23	R160	-73 241.08	3 235	921.33	
L161	-71 833.12	3 238	610.07	R161	-73 307.22	3 235	810.85	
L162	-71 941.89	3 238	265.91	R162	-73 452.75	3 235	568.14	
L163	-72 081.04	3 237	820.64	R163	-73 618.25	3 235	309.79	
L164	-72 060.11	3 237	818.22	R164	-74 014.84	3 234	698.09	
L165	-72 044.40	3 237	816.10	R165	-74 625.54	3 234	243.91	
L166	-72 061.76	3 237	782.79	R166	-75 976.98	3 233	336.35	
L167	-72 071.30	3 237	783.66	R167	-76 363.72	3 233	056.16	
L168	-72 098.93	3 237	786.96	R168	-77 132.76	3 232	537.74	
L169	-72 182.73	3 237	626.87	R169	-77 948.13	3 231	988.42	
L170	-72 562.11	3 236	993.26	R170	-78 752.63	3 231	447.96	
L171	-72 937.62	3 236	336.23	R171	-79 290.69	3 231	086.57	
L172	-73 427.44	3 235	549.33	R172	-79 400.62	3 230	980.99	
L173	-73 456.43	3 235	500.98	R173	-79 486.61	3 230	857.46	
L174	-73 790.61	3 234	943.81	R174	-79 704.47	3 230	384.65	
L175	-73 885.78	3 234	799.55	R175	-79 847.15	3 230	074.31	
L176	-73 954.41	3 234	712.40	R176	-79 892.91	3 229	857.81	
L177	-74 048.15	3 234	611.26	R177	-79 867.71	3 229	652.50	
L178	-74 129.84	3 234	536.36	R178	-79 846.52	3 229	549.71	
L179	-74 247.08	3 234	445.58	R179	-79 851.84	3 229	399.38	
L180	-74 733.68	3 234	117.37	R180	-79 853.55	3 229	341.90	
L181	-75 583.90	3 233	544.03	R181	-79 880.59	3 229	236.81	
L182	-75 949.29	3 233	297.75	R182	-79 921.55	3 229	132.51	
L183	-75 945.11	3 233	288.36	R183	-80 005.74	3 229	003.63	
L184	-75 951.28	3 233	285.01	R184	-80 151.52	3 228	820.43	
L185	-75 960.50	3 233	289.95	R185	-80 273.84	3 228	632.57	
L186	-77 495.62	3 232	255.02	R186	-80 354.79	3 228	399.84	
L187	-77 936.13	3 231	958.60	R187	-80 391.87	3 228	412.38	
L188	-78 300.02	3 231	713.46	R188	-80 400.02	3 228	389.47	
L189	-78 738.89	3 231	419.21	R189	-80 362.96	3 228	376.32	
L190	-79 251.54	3 231	075.14	R190	-80 573.07	3 227	770.02	
L191	-79 360.93	3 230	976.14	R191	-80 868.47	3 226	918.79	
L192	-79 451.41	3 230	852.31	R192	-81 150.04	3 226	107.69	
L193	-79 676.40	3 230	370.43	R193	-81 445.88	3 225	255.12	
L194	-79 792.46	3 230	121.51	R194	-81 737.06	3 224	416.20	
L195	-79 821.24	3 230	038.52	R195	-82 036.82	3 223	552.22	
L196	-79 845.05	3 229	931.78	R196	-82 333.36	3 222	696.74	
L197	-79 853.24	3 229	806.65	R197	-82 628.34	3 221	847.04	
L198	-79 810.71	3 229	480.05	R198	-82 927.57	3 220	984.11	
L199	-79 817.97	3 229	395.87	R199	-83 222.87	3 220	131.99	
L200	-79 826.60	3 229	302.65	R200	-83 387.19	3 219	657.37	
L201	-79 853.99	3 229	208.39	R201	-83 422.88	3 219	459.97	
L202	-79 921.72	3 229	058.12	R202	-83 378.76	3 219	202.57	
L203	-80 112.30	3 228	822.60	R203	-83 206.22	3 218	690.12	
L204	-80 201.96	3 228	684.62	R204	-82 922.74	3 217	846.42	

Vel	32	Van	37	P629/07
Sheet		of		

PADRESERWE KOÖRDINATE				/ ROAD RESERVE CO-ORDINATES			
LINKERKANT/LEFT HAND SIDE				REGTERKANT/RIGHT HAND SIDE			
	Y	X	WG 17°		Y	X	
L205	-80 279.47	3 228	523.67	R205	-82 630.41	3 216	976.76
L206	-80 544.32	3 227	760.66	R206	-82 454.93	3 216	454.53
L207	-80 839.54	3 226	909.18	R207	-82 277.56	3 215	926.44
L208	-81 117.19	3 226	108.90	R208	-82 029.32	3 215	189.95
L209	-81 417.80	3 225	242.73	R209	-82 021.24	3 215	163.75
L210	-81 709.32	3 224	402.60	R210	-81 741.68	3 214	332.42
L211	-82 009.59	3 223	537.62	R211	-81 451.61	3 213	470.20
L212	-82 304.93	3 222	686.40	R212	-81 151.21	3 212	575.59
L213	-82 600.40	3 221	833.99	R213	-81 051.97	3 212	280.63
L214	-82 825.76	3 221	184.23	R214	-81 053.83	3 212	262.85
L215	-83 044.99	3 220	522.32	R215	-81 055.13	3 212	262.38
L216	-83 316.51	3 219	767.83	R216	-81 049.41	3 212	244.43
L217	-83 362.56	3 219	599.69	R217	-81 048.06	3 212	244.65
L218	-83 375.16	3 219	490.84	R218	-81 035.48	3 212	231.83
L219	-83 373.82	3 219	375.34	R219	-80 878.17	3 211	764.10
L220	-83 346.62	3 219	206.26	R220	-80 829.20	3 211	672.71
L221	-83 175.62	3 218	697.54	R221	-80 764.57	3 211	590.74
L222	-82 890.72	3 217	850.39	R222	-80 335.39	3 211	058.54
L223	-82 598.57	3 216	982.34	R223	-79 909.50	3 210	531.16
L224	-82 423.44	3 216	461.75	R224	-79 341.28	3 209	826.80
L225	-82 246.47	3 215	933.45	R225	-78 780.02	3 209	130.86
L226	-81 996.39	3 215	193.26	R226	-78 192.32	3 208	401.88
L227	-81 995.26	3 215	183.93	R227	-77 586.09	3 207	650.94
L228	-81 986.24	3 215	161.62	R228	-76 991.10	3 206	913.00
L229	-81 856.75	3 214	773.08	R229	-76 434.07	3 206	222.30
L230	-81 709.06	3 214	333.10	R230	-75 465.25	3 205	019.96
L231	-81 569.18	3 213	918.95	R231	-75 332.98	3 204	856.84
L232	-81 272.54	3 213	034.15	R232	-75 249.85	3 204	754.32
L233	-81 016.02	3 212	270.21	R233	-74 962.04	3 204	397.63
L234	-80 864.01	3 211	817.38	R234	-73 739.21	3 202	881.23
L235	-80 829.25	3 211	744.12	R235	-73 422.15	3 202	487.87
L236	-80 785.87	3 211	666.70	R236	-72 781.41	3 201	693.36
L237	-80 461.54	3 211	265.13	R237	-72 212.51	3 200	988.01
L238	-79 886.38	3 210	552.75	R238	-71 873.30	3 200	567.28
L239	-79 341.59	3 209	877.48	R239	-71 240.54	3 199	782.27
L240	-78 765.05	3 209	162.74	R240	-71 119.95	3 199	632.83
L241	-78 157.69	3 208	410.46	R241	-70 995.66	3 199	434.84
L242	-77 560.23	3 207	670.06	R242	-70 900.96	3 199	220.98
L243	-76 964.30	3 206	930.60	R243	-70 800.38	3 198	909.42
L244	-76 411.49	3 206	245.05	R244	-70 811.04	3 198	894.73
L245	-75 799.70	3 205	485.63	R245	-70 812.46	3 198	894.29
L246	-75 449.62	3 205	051.32	R246	-70 804.14	3 198	877.21
L247	-75 298.58	3 204	864.40	R247	-70 802.64	3 198	877.63
L248	-75 237.24	3 204	788.50	R248	-70 787.20	3 198	868.11
L249	-75 219.78	3 204	789.64	R249	-70 532.20	3 198	083.85
L250	-75 218.66	3 204	787.24	R250	-70 215.55	3 197	108.68
L251	-75 206.72	3 204	772.76	R251	-70 039.09	3 196	565.09
L252	-75 207.79	3 204	771.64	R252	-69 737.07	3 195	635.54
L253	-75 209.92	3 204	754.09	R253	-69 261.02	3 194	169.16
L254	-74 625.50	3 204	030.35	R254	-69 162.43	3 193	924.08
L255	-74 309.32	3 203	638.26	R255	-69 067.48	3 193	771.41

Vel	33	Van	37	P629/07
Sheet		of		

PADRESERWE KOÖRDINATE				ROAD RESERVE CO-ORDINATES			
LINKERKANT/LEFT HAND SIDE				REGTERKANT/RIGHT HAND SIDE			
	Y	X	WG 17°		Y	X	
L256	-73 712.81	3 202 898.21		R256	-68 474.87	3 193 012.00	
L257	-73 087.78	3 202 123.49		R257	-68 350.10	3 192 815.01	
L258	-72 762.01	3 201 719.79		R258	-68 236.24	3 192 536.72	
L259	-72 180.75	3 200 998.42		R259	-68 064.58	3 191 866.29	
L260	-71 848.28	3 200 586.24		R260	-67 969.09	3 191 491.89	
L261	-71 212.03	3 199 797.21		R261	-67 912.26	3 191 330.28	
L262	-71 033.69	3 199 575.44		R262	-67 844.90	3 191 191.29	
L263	-70 904.16	3 199 329.84		R263	-67 708.43	3 190 947.25	
L264	-70 340.21	3 197 594.81		R264	-67 437.89	3 190 459.98	
L265	-70 184.68	3 197 115.33		R265	-67 400.23	3 190 388.12	
L266	-70 015.35	3 196 593.77		R266	-67 361.66	3 190 301.60	
L267	-69 858.94	3 196 112.91		R267	-67 334.49	3 190 222.60	
L268	-69 570.83	3 195 224.72		R268	-67 287.88	3 190 101.91	
L269	-69 437.08	3 194 812.89		R269	-67 023.98	3 189 292.01	
L270	-69 377.78	3 194 638.01		R270	-66 976.69	3 189 146.46	
L271	-69 296.99	3 194 386.65		R271	-66 911.50	3 189 040.61	
L272	-69 220.48	3 194 153.63		R272	-66 837.52	3 188 955.22	
L273	-69 105.81	3 193 886.70		R273	-66 157.58	3 188 367.88	
L274	-69 078.36	3 193 842.00		R274	-66 051.05	3 188 310.94	
L275	-69 056.12	3 193 809.80		R275	-65 826.18	3 188 256.51	
L276	-68 704.61	3 193 362.85		R276	-65 587.06	3 188 201.95	
L277	-68 605.63	3 193 232.83		R277	-65 544.16	3 188 192.60	
L278	-68 570.76	3 193 190.74		R278	-65 500.57	3 188 178.92	
L279	-68 556.17	3 193 167.98		R279	-65 467.23	3 188 163.32	
L280	-68 371.27	3 192 931.66		R280	-65 438.66	3 188 144.47	
L281	-68 235.01	3 192 665.45		R281	-65 413.04	3 188 121.90	
L282	-68 034.92	3 191 872.92		R282	-65 386.18	3 188 091.04	
L283	-67 940.68	3 191 499.81		R283	-65 364.66	3 188 059.11	
L284	-67 883.34	3 191 340.42		R284	-65 341.68	3 188 017.67	
L285	-67 807.79	3 191 187.20		R285	-65 289.92	3 187 921.82	
L286	-67 385.80	3 190 435.90		R286	-65 268.52	3 187 888.88	
L287	-67 343.13	3 190 332.68		R287	-65 245.25	3 187 860.26	
L288	-67 277.59	3 190 168.48		R288	-65 216.97	3 187 834.99	
L289	-67 161.67	3 189 815.69		R289	-65 191.59	3 187 816.75	
L290	-67 048.63	3 189 468.95		R290	-65 173.74	3 187 801.70	
L291	-66 951.12	3 189 174.25		R291	-65 136.19	3 187 794.84	
L292	-66 918.79	3 189 101.46		R292	-65 101.65	3 187 789.38	
L293	-66 876.26	3 189 046.86		R293	-65 066.17	3 187 788.09	
L294	-66 802.25	3 188 965.89		R294	-65 038.98	3 187 790.79	
L295	-66 179.02	3 188 427.54		R295	-65 011.50	3 187 796.96	
L296	-66 096.96	3 188 368.55		R296	-64 983.60	3 187 807.09	
L297	-66 023.22	3 188 336.50		R297	-64 955.93	3 187 819.30	
L298	-65 980.54	3 188 340.12		R298	-64 911.74	3 187 842.62	
L299	-65 934.08	3 188 315.02		R299	-64 671.70	3 187 971.19	
L300	-65 579.67	3 188 235.16		R300	-64 639.97	3 187 985.49	
L301	-65 530.13	3 188 225.51		R301	-64 606.94	3 187 995.18	
L302	-65 474.96	3 188 206.11		R302	-64 571.46	3 187 999.36	
L303	-65 434.93	3 188 183.77		R303	-64 535.26	3 187 996.40	
L304	-65 387.84	3 188 148.16		R304	-64 503.53	3 187 987.28	
L305	-65 359.21	3 188 113.39		R305	-64 473.07	3 187 970.73	
L306	-65 332.18	3 188 080.86		R306	-64 443.94	3 187 949.85	

Vel	34	Van	37	P629/07
Sheet		of		

PADRESERWE KOÖRDINATE				/ ROAD RESERVE CO-ORDINATES		
LINKERKANT/LEFT HAND SIDE				REGTERKANT/RIGHT HAND SIDE		
	Y	X	WG 17°		Y	X
L307	-65 309.76	3 188	032.57	R307	-64 420.98	3 187 925.48
L308	-65 257.22	3 187	941.66	R308	-64 401.54	3 187 892.75
L309	-65 245.26	3 187	915.75	R309	-64 389.61	3 187 858.58
L310	-65 216.60	3 187	879.09	R310	-64 384.62	3 187 825.45
L311	-65 187.70	3 187	852.90	R311	-64 385.94	3 187 794.68
L312	-65 143.21	3 187	831.06	R312	-64 392.11	3 187 760.57
L313	-65 088.06	3 187	820.23	R313	-64 405.08	3 187 727.78
L314	-65 050.31	3 187	821.10	R314	-64 422.42	3 187 697.17
L315	-65 010.40	3 187	830.43	R315	-64 498.23	3 187 584.14
L316	-64 972.92	3 187	846.12	R316	-64 513.61	3 187 560.54
L317	-64 926.73	3 187	870.28	R317	-64 526.67	3 187 536.13
L318	-64 684.79	3 187	999.83	R318	-64 537.00	3 187 503.80
L319	-64 657.45	3 188	012.32	R319	-64 541.45	3 187 479.26
L320	-64 626.48	3 188	023.17	R320	-64 548.58	3 187 442.73
L321	-64 595.17	3 188	029.41	R321	-64 534.76	3 187 411.60
L322	-64 563.82	3 188	031.01	R322	-64 527.70	3 187 371.25
L323	-64 535.22	3 188	028.37	R323	-64 513.54	3 187 345.53
L324	-64 507.37	3 188	022.04	R324	-64 491.21	3 187 313.61
L325	-64 477.56	3 188	011.01	R325	-64 484.12	3 187 283.82
L326	-64 445.81	3 187	992.43	R326	-64 475.87	3 187 263.83
L327	-64 418.30	3 187	971.61	R327	-64 462.16	3 187 250.29
L328	-64 398.57	3 187	948.51	R328	-64 446.61	3 187 246.48
L329	-64 380.26	3 187	921.56	R329	-64 392.38	3 187 243.45
L330	-64 367.23	3 187	893.02	R330	-64 365.09	3 187 239.89
L331	-64 356.38	3 187	864.31	R331	-64 317.09	3 187 236.67
L332	-64 343.49	3 187	840.17	R332	-64 272.87	3 187 239.18
L333	-64 349.53	3 187	800.38	R333	-63 733.21	3 187 261.71
L334	-64 356.74	3 187	760.52	R334	-63 698.27	3 187 262.16
L335	-64 368.95	3 187	728.53	R335	-63 658.74	3 187 254.79
L336	-64 384.57	3 187	698.82	R336	-63 629.70	3 187 243.48
L337	-64 396.30	3 187	679.63	R337	-63 605.17	3 187 229.17
L338	-64 471.51	3 187	565.51	R338	-63 575.88	3 187 204.47
L339	-64 481.67	3 187	541.99	R339	-63 520.21	3 187 118.00
L340	-64 491.21	3 187	525.04	R340	-63 448.83	3 186 951.51
L341	-64 498.87	3 187	494.76	R341	-63 435.34	3 186 912.26
L342	-64 504.74	3 187	471.91	R342	-63 428.52	3 186 872.25
L343	-64 505.98	3 187	448.50	R343	-63 428.15	3 186 832.22
L344	-64 504.89	3 187	420.68	R344	-63 433.89	3 186 793.45
L345	-64 493.50	3 187	384.96	R345	-63 445.91	3 186 755.23
L346	-64 481.89	3 187	360.87	R346	-63 711.11	3 186 125.62
L347	-64 461.41	3 187	354.05	R347	-63 725.63	3 186 065.06
L348	-64 434.10	3 187	317.46	R348	-63 733.60	3 186 018.25
L349	-64 415.02	3 187	296.07	R349	-63 735.00	3 185 974.29
L350	-64 379.21	3 187	294.13	R350	-63 729.96	3 185 928.75
L351	-64 357.47	3 187	282.68	R351	-63 719.13	3 185 888.66
L352	-64 314.73	3 187	289.43	R352	-63 700.78	3 185 847.19
L353	-64 275.61	3 187	277.50	R353	-63 676.45	3 185 808.88
L354	-63 736.76	3 187	295.52	R354	-63 648.21	3 185 772.12
L355	-63 696.71	3 187	296.14	R355	-63 616.14	3 185 742.53
L356	-63 660.55	3 187	290.48	R356	-63 576.26	3 185 716.84
L357	-63 615.37	3 187	274.31	R357	-63 536.64	3 185 700.25

Vel	35	Van	37	P629/07
Sheet		of		

PADRESERWE KOÖRDINATE				ROAD RESERVE CO-ORDINATES			
LINKERKANT/LEFT HAND SIDE				REGTERKANT/RIGHT HAND SIDE			
	Y	X	WG 17°		X	Y	
L358	-63 584.97	3 187 256.54		R358	-63 495.55	3 185 689.46	
L359	-63 557.40	3 187 233.93		R359	-63 452.34	3 185 682.82	
L360	-63 492.32	3 187 132.85		R360	-63 401.80	3 185 680.88	
L361	-63 419.89	3 186 963.92		R361	-62 957.59	3 185 718.46	
L362	-63 405.09	3 186 921.04		R362	-62 922.61	3 185 714.00	
L363	-63 396.99	3 186 872.90		R363	-62 893.29	3 185 706.65	
L364	-63 396.75	3 186 829.97		R364	-62 866.09	3 185 695.47	
L365	-63 403.42	3 186 785.51		R365	-62 839.37	3 185 679.56	
L366	-63 416.06	3 186 745.00		R366	-62 815.41	3 185 659.87	
L367	-63 674.80	3 186 112.82		R367	-62 794.94	3 185 637.14	
L368	-63 675.22	3 186 111.88		R368	-62 777.65	3 185 610.91	
L369	-63 690.99	3 186 072.06		R369	-62 763.98	3 185 580.80	
L370	-63 699.41	3 186 036.91		R370	-62 755.51	3 185 549.97	
L371	-63 703.42	3 185 991.00		R371	-62 752.01	3 185 520.49	
L372	-63 700.22	3 185 947.68		R372	-62 752.08	3 185 469.88	
L373	-63 690.15	3 185 904.84		R373	-62 760.08	3 185 056.71	
L374	-63 672.12	3 185 861.54		R374	-62 758.39	3 185 017.80	
L375	-63 639.37	3 185 812.16		R375	-62 755.68	3 184 987.87	
L376	-63 603.99	3 185 776.57		R376	-62 717.44	3 184 885.91	
L377	-63 558.90	3 185 745.74		R377	-62 622.83	3 184 825.72	
L378	-63 511.06	3 185 725.08		R378	-62 512.68	3 184 756.11	
L379	-63 463.63	3 185 714.16		R379	-62 403.58	3 184 685.90	
L380	-63 404.46	3 185 712.25		R380	-62 314.36	3 184 628.50	
L381	-62 962.36	3 185 749.66		R381	-62 188.50	3 184 547.50	
L382	-62 927.13	3 185 748.78		R382	-62 180.07	3 184 542.66	
L383	-62 893.54	3 185 742.03		R383	-62 153.28	3 184 525.44	
L384	-62 861.95	3 185 729.86		R384	-62 124.40	3 184 507.44	
L385	-62 833.37	3 185 712.92		R385	-62 049.23	3 184 466.01	
L386	-62 803.49	3 185 689.11		R386	-61 903.52	3 184 389.46	
L387	-62 779.08	3 185 667.44		R387	-61 122.45	3 183 979.33	
L388	-62 757.22	3 185 640.82		R388	-61 079.87	3 183 957.44	
L389	-62 741.47	3 185 614.26		R389	-61 040.67	3 183 937.28	
L390	-62 728.88	3 185 583.12		R390	-61 028.99	3 183 926.59	
L391	-62 721.13	3 185 549.14		R391	-61 028.09	3 183 925.54	
L392	-62 718.96	3 185 519.03		R392	-61 004.56	3 183 898.06	
L393	-62 719.78	3 185 499.96		R393	-61 000.92	3 183 887.95	
L394	-62 726.22	3 185 167.42		R394	-60 986.56	3 183 848.05	
L395	-62 726.58	3 185 148.68		R395	-60 989.59	3 183 810.00	
L396	-62 728.33	3 185 058.26		R396	-60 994.83	3 183 804.74	
L397	-62 722.44	3 185 013.11		R397	-61 019.15	3 183 746.75	
L398	-62 708.43	3 184 966.96		R398	-61 026.15	3 183 727.80	
L399	-62 689.66	3 184 927.95		R399	-61 048.26	3 183 686.73	
L400	-62 660.86	3 184 893.55		R400	-61 069.22	3 183 648.25	
L401	-62 630.48	3 184 870.90		R401	-61 084.24	3 183 620.85	
L402	-62 389.21	3 184 708.38		R402	-61 250.46	3 183 301.59	
L403	-62 291.52	3 184 644.93					
L404	-62 180.07	3 184 572.54					
L405	-62 169.28	3 184 565.53					
L406	-62 130.73	3 184 544.51					
L407	-62 110.02	3 184 533.23					
L408	-62 035.46	3 184 491.70					

Vel	36	Van	37	P629/07
Sheet		of		

PADRESERWE KOÖRDINATE			/ ROAD RESERVE CO-ORDINATES		
LINKERKANT/LEFT HAND SIDE			REGTERKANT/RIGHT HAND SIDE		
	Y	X	WG 17°	Y	X
L409	-61 880.46	3 184	410.84		
L410	-61 383.95	3 184	151.82		
L411	-61 298.20	3 184	106.82		
L412	-61 242.88	3 184	077.79		
L413	-61 136.87	3 184	022.16		
L414	-61 069.67	3 183	987.60		
L415	-60 952.91	3 183	900.35		
L416	-60 923.45	3 183	794.92		
L417	-60 957.60	3 183	781.32		
L418	-60 971.74	3 183	767.25		
L419	-61 035.52	3 183	639.41		
L420	-61 052.59	3 183	599.39		
L421	-61 219.96	3 183	276.87		

Vel 37	Van 37	P629/07
Sheet	of	

Printed by and obtainable from the Government Printer, Bosman Street, Private Bag X85, Pretoria, 0001  
 Publications: Tel: (012) 334-4508, 334-4509, 334-4510  
 Advertisements: Tel: (012) 334-4673, 334-4674, 334-4504  
 Subscriptions: Tel: (012) 334-4735, 334-4736, 334-4737  
 Cape Town Branch: Tel: (021) 465-7531

Gedruk deur en verkrygbaar by die Staatsdrukker, Bosmanstraat, Privaatsak X85, Pretoria, 0001  
 Publikasies: Tel: (012) 334-4508, 334-4509, 334-4510  
 Advertensies: Tel: (012) 334-4673, 334-4674, 334-4504  
 Subskripsies: Tel: (012) 334-4735, 334-4736, 334-4737  
 Kaapstad-tak: Tel: (021) 465-7531