
**GOVERNMENT NOTICE
GOEWERMENTSKENNISGEWING**

**DEPARTMENT OF TRANSPORT
DEPARTEMENT VAN VERVOER**

No. 139

8 February 2008

**THE SOUTH AFRICAN NATIONAL ROADS
AGENCY LIMITED**

Registration No: 98/09584/06

DECLARATION AMENDMENT OF NATIONAL ROAD N14 SECTION 6

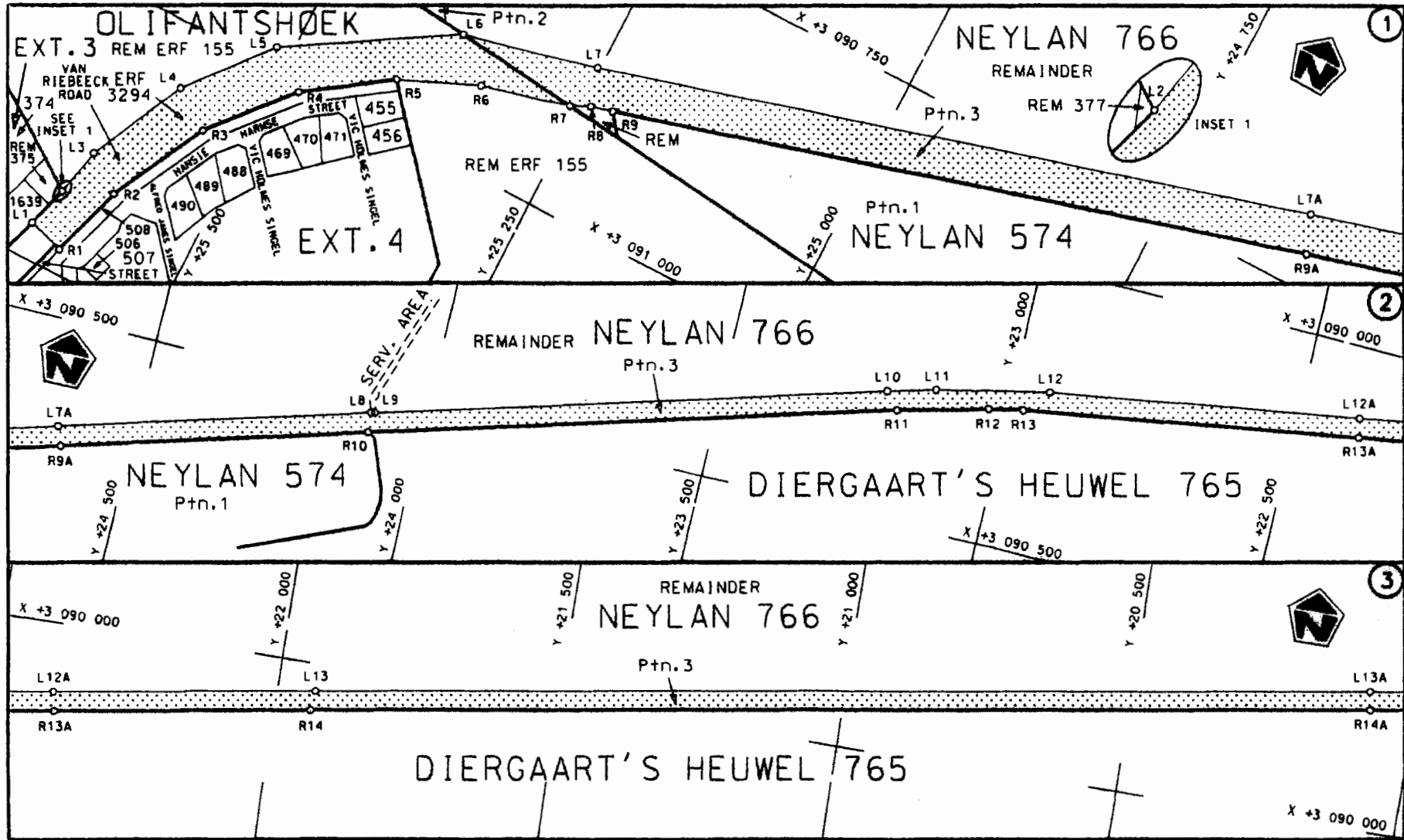
AMENDMENT OF DECLARATION No. 629 OF 2005

By virtue of section 40 (1)(b) of the South African National Roads Agency Limited and the National Roads Act, 1998 (Act No. 7 of 1998), I hereby amend Declaration No. 629 of 2005, by substituting the descriptive section of the route from Olifansthoek up to the common boundary between the Remainder of the farm Sekgame 461 and the Remainder of Portion 4 of the farm Bestwood 459, with the subjoined sheets 1 to 9 of Plan P616/07.

(National Road N14 Section 6: Olifantshoek – Kathu)



MINISTER OF TRANSPORT

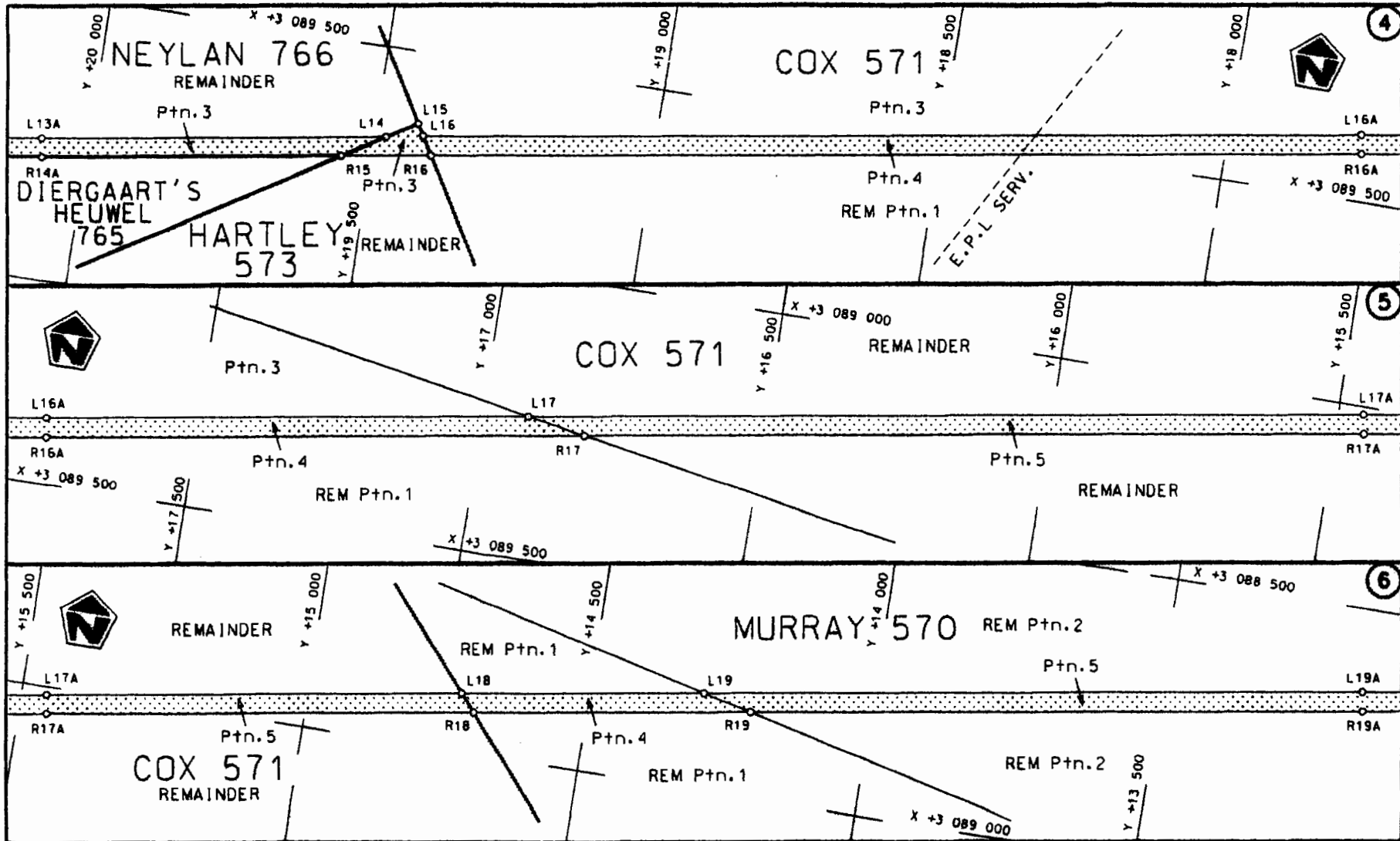



<p>Die Suid Afrikaanse Nasionale Padagentskap Beperk The South African National Roads Agency Limited</p>	<p>Die figuur getoon The figure shown</p>	<p>steldie padreserwe voor van 'n gedeelte represents the road reserve of a portion van Nasionale Roete N14 Seksie of National Route Section 6</p>	<p>Vel Sheet 1 van of 9 Plan P616/07</p>
--	---	--	--

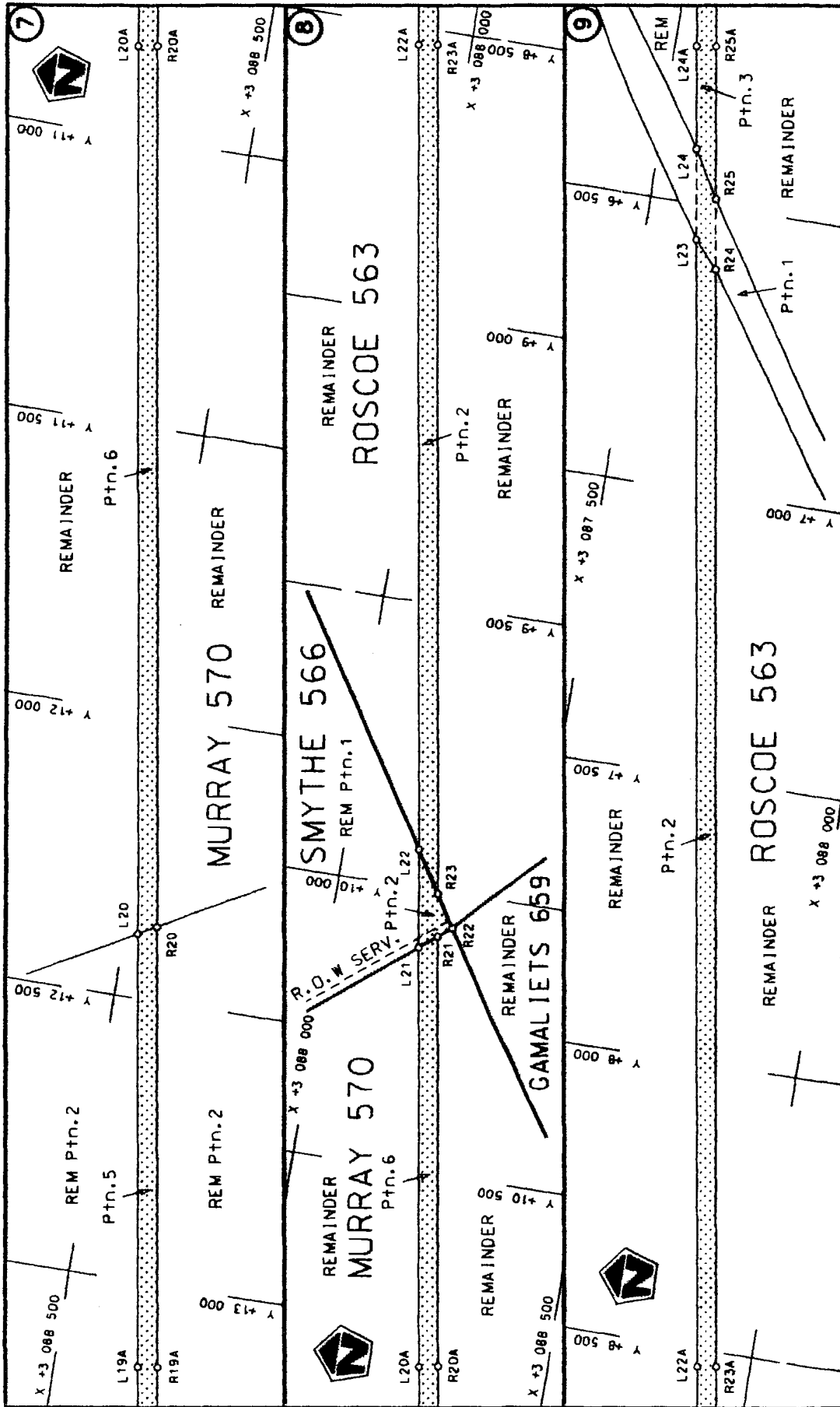
D.O.9.A

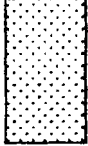
STAATSKOERANT, 8 FEBRUARIE 2008

No. 30741 5

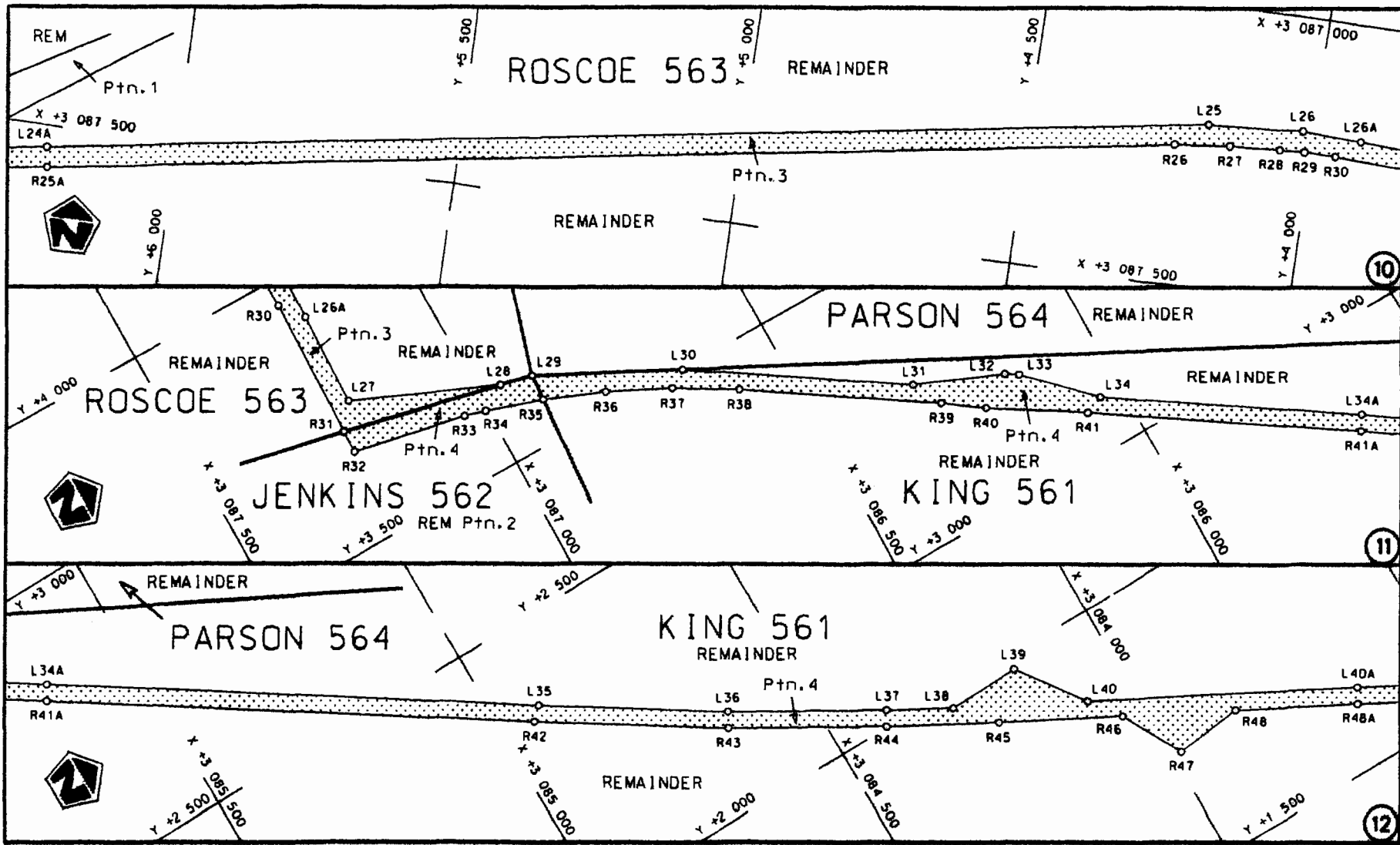



<p>Die Suid Afrikaanse Nasionale Padogentekap Beperk The South African National Roads Agency Limited</p>	<p>Die figuur getoon The figure shown</p> 	<p>steldie padreserwe voor van 'n gedeelte represents the road reserve of a portion van Nasionale Roete N14 Seksie 6 of National Route</p>	<p>Vel Sheet 2 of 9 Plan P1616/07</p>
--	--	--	---

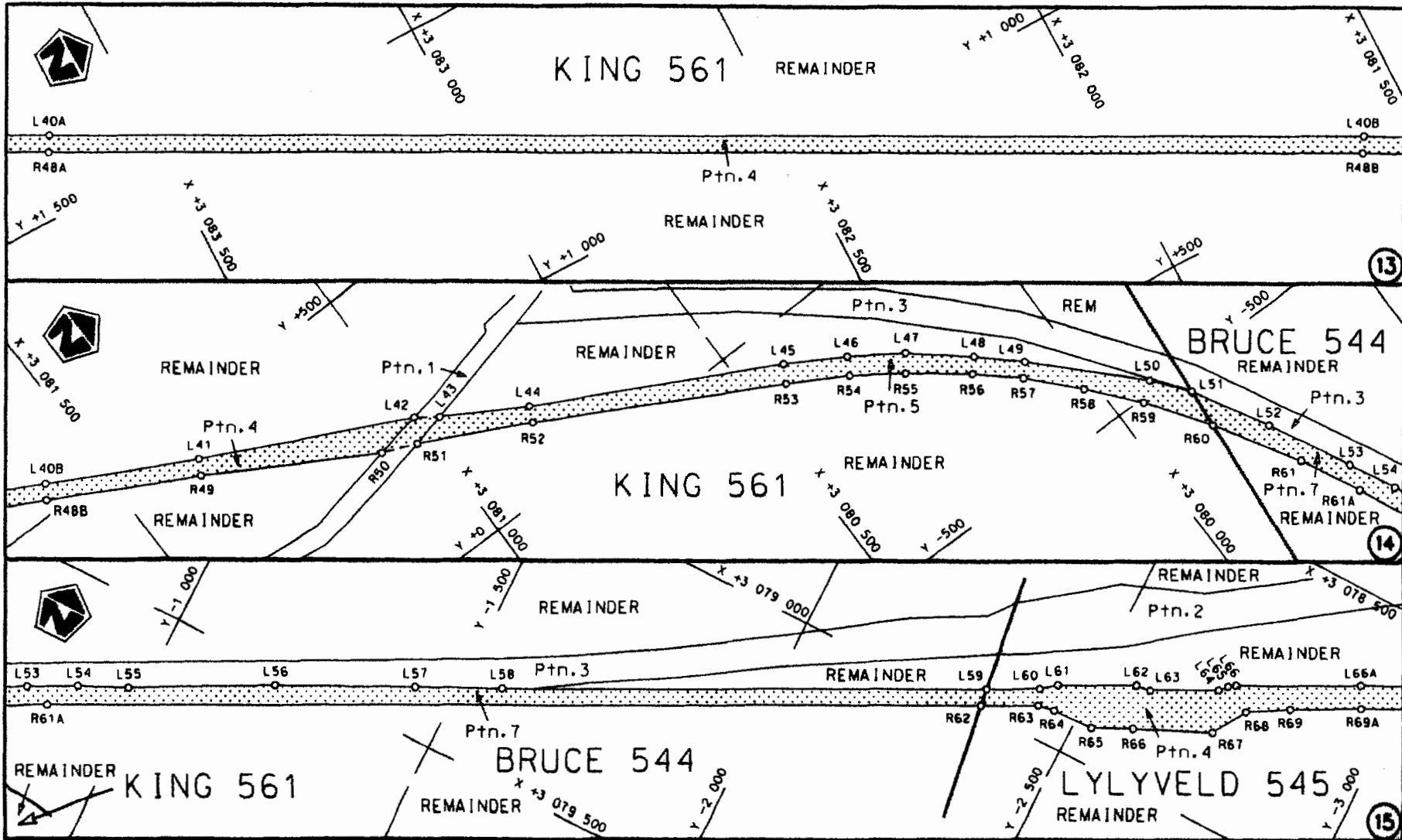


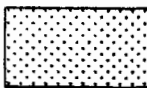
<p>Die Suid Afrikaanse Nasionale Padagentskap Beperk The South African National Roads Agency Limited</p>	<p>Die figuur getoon The figure shown</p> 	<p>steldie podreserwe voor van 'n gedeelte represents the road reserve of a portion van Nasionale Roete N14 Sekste of National Route Section 6</p>	<p>Vel Sheet 3 of 9 Plan P616/07</p>
--	---	--	--

D.O.9.A

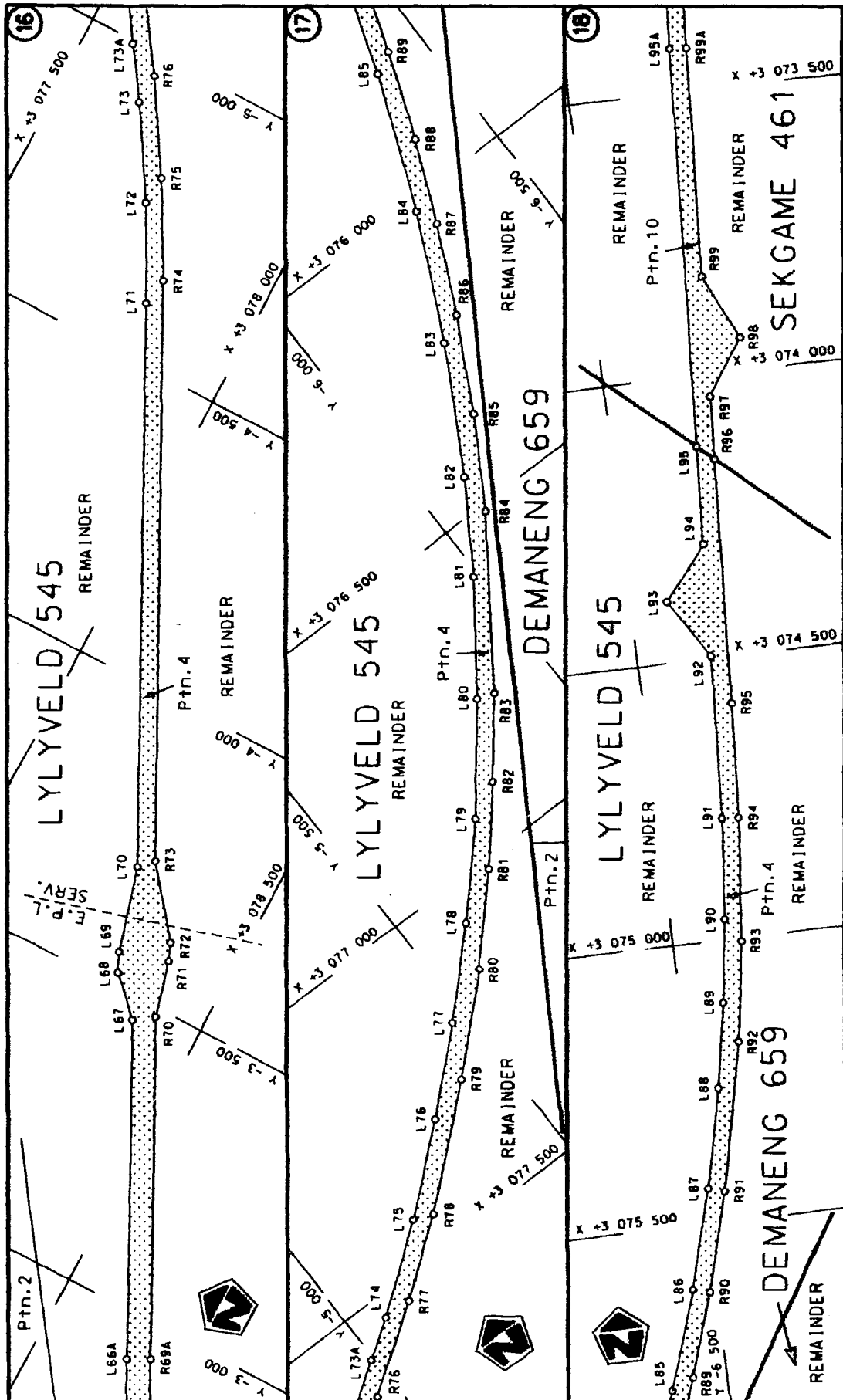


<p>Die Suid Afrikaanse Nasionale Padagentskap Beperk The South African National Roads Agency Limited</p>	<p>Die figuur getoon The figure shown</p>		<p>stel die padreserwe voor van 'n gedeelte represents the road reserve of a portion van Nasionale Roete N14 of National Route N14</p> <p>Seksie 6</p>	<p>Vel 4 van 9 Sheet 4 of 9</p> <p>Plan P616/07</p>
--	---	--	--	---



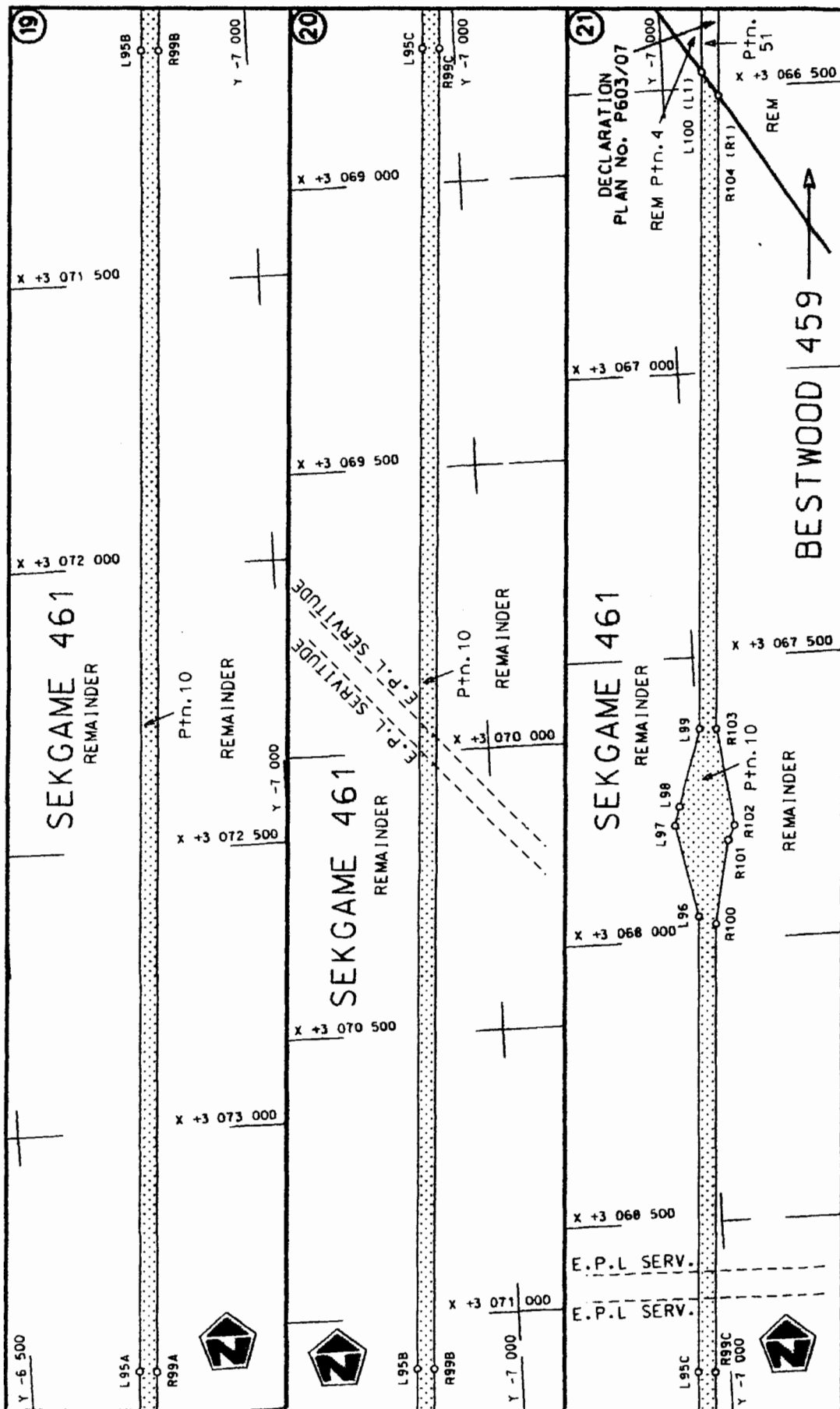
<p>Die Suid Afrikaanse Nasionale Padagentskap Beperk The South African National Roads Agency Limited</p>	<p>Die figuur getoon The figure shown</p> 	<p>steldis padreserwe voor van 'n gedeelte represents the road reserve of a portion van Nasionale Roete N14 Seksie of National Route N14 Section</p>	<p>Vel Sheet 5 van 9 Plan P616/07</p>
--	--	--	---

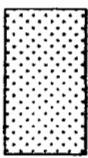
D.O.9.A



<p>Die Suid Afrikaanse Nasionale Padagentskap Beperk The South African National Roads Agency Limited</p>	<p>Die figuur getoon The figure shown</p>	<p>stelsel padreserwe voor van 'n gedeelte represents the road reserve of a portion van Nasionale Roete N14 Seksie of National Route N14 Section</p>	<p>Vel Sheet 6 of 9</p> <p>Plan P616/07</p>
--	---	--	---

D.O.9.A



<p>Die Suid Afrikaanse Nasionale Padogenietenskap Beperk The South African National Roads Agency Limited</p>	<p>Die figuur getoon The figure shown</p> 	<p>steldie padreserwe voor van 'n gedeelte represents the road reserve of a portion van Nasionale Roete N14 of National Route</p>	<p>Vel Sheet 7 of 9</p> <p>Plan P616/07</p>
--	---	---	---

D.O.9.A

PADRESERWE KOÖRDINATE				ROAD RESERVE CO-ORDINATES			
LINKERKANT/LEFT HAND SIDE				REGTERKANT/RIGHT HAND SIDE			
	Y	X	WG 23°		Y	X	
L1	25 634.88	3 091 219.34		R1	25 602.36	3 091 229.27	
L2	25 623.68	3 091 182.68		R2	25 582.50	3 091 164.24	
L3	25 614.61	3 091 140.22		R3	25 538.63	3 091 078.39	
L4	25 573.60	3 091 054.40		R4	25 478.82	3 091 008.65	
L5	25 514.12	3 090 982.25		R5	25 404.83	3 090 957.72	
L6	25 371.06	3 090 895.00		R6	25 336.21	3 090 927.39	
L7	25 251.88	3 090 865.33		R7	25 257.74	3 090 906.78	
L8	24 096.93	3 090 532.28		R8	25 241.19	3 090 898.75	
L9	24 090.10	3 090 530.75		R9	25 221.90	3 090 893.75	
L10	23 213.94	3 090 276.85		R10	24 094.36	3 090 567.07	
L11	23 131.09	3 090 254.56		R11	23 189.85	3 090 305.30	
L12	22 934.40	3 090 211.27		R12	23 033.02	3 090 265.83	
L13	21 932.59	3 090 050.24		R13	22 972.54	3 090 252.91	
L14	19 478.53	3 089 659.03		R14	21 935.62	3 090 085.00	
L15	19 424.85	3 089 626.53		R15	19 553.23	3 089 704.26	
L16	19 412.33	3 089 646.96		R16	19 392.92	3 089 678.68	
L17	16 917.14	3 089 248.19		R17	16 814.12	3 089 266.07	
L18	14 725.90	3 088 897.70		R18	14 699.67	3 088 927.84	
L19	14 298.99	3 088 829.45		R19	14 212.07	3 088 850.01	
L20	12 387.56	3 088 523.65		R20	12 369.87	3 088 555.28	
L21	10 105.03	3 088 158.59		R21	10 080.44	3 088 189.04	
L22	9 932.15	3 088 131.09		R22	10 061.46	3 088 212.54	
L23	6 562.37	3 087 591.50		R23	10 004.82	3 088 176.86	
L24	6 404.69	3 087 566.08		R24	6 608.76	3 087 633.48	
L25	4 184.49	3 087 211.14		R25	6 486.81	3 087 613.98	
L26	4 018.29	3 087 200.50		R26	4 238.77	3 087 254.16	
L27	3 744.35	3 087 209.70		R27	4 141.98	3 087 243.07	
L28	3 635.19	3 086 957.09		R28	4 054.39	3 087 237.27	
L29	3 621.96	3 086 898.82		R29	4 010.51	3 087 235.97	
L30	3 499.28	3 086 660.28		R30	3 955.55	3 087 235.85	
L31	3 274.00	3 086 318.29		R31	3 700.33	3 087 243.98	
L32	3 210.83	3 086 166.63		R32	3 659.75	3 087 244.75	
L33	3 197.51	3 086 145.24		R33	3 618.33	3 087 041.66	
L34	3 090.82	3 086 040.23		R34	3 607.09	3 087 003.04	
L35	2 352.70	3 084 919.19		R35	3 574.40	3 086 902.58	
L36	2 170.51	3 084 636.32		R36	3 531.73	3 086 799.28	
L37	2 027.83	3 084 393.25		R37	3 478.98	3 086 692.94	
L38	1 970.30	3 084 289.60		R38	3 417.99	3 086 590.86	
L39	1 974.85	3 084 162.36		R39	3 219.94	3 086 290.94	
L40	1 858.80	3 084 079.20		R40	3 173.39	3 086 225.42	
L41	420.54	3 081 353.30		R41	3 076.93	3 086 073.34	
L42	247.70	3 080 999.37		R42	2 331.13	3 084 940.71	
L43	221.69	3 080 962.56		R43	2 144.69	3 084 650.93	
L44	141.61	3 080 823.96		R44	2 001.77	3 084 408.40	
L45	-71.14	3 080 418.99		R45	1 906.26	3 084 233.38	
L46	-128.37	3 080 319.86		R46	1 804.01	3 084 039.55	
L47	-184.96	3 080 234.11		R47	1 695.41	3 083 983.31	
L48	-262.96	3 080 141.93		R48	1 710.82	3 083 862.90	
L49	-324.66	3 080 075.22		R49	394.63	3 081 367.69	
L50	-482.62	3 079 918.38		R50	231.81	3 081 084.09	
L51	-542.96	3 079 870.95		R51	207.21	3 081 023.12	

Vel	8	Van	9	P616/07
Sheet		of		

PADRESERWE KOÖRDINATE				/	ROAD RESERVE CO-ORDINATES			
LINKERKANT/LEFT HAND SIDE					REGTERKANT/RIGHT HAND SIDE			
	Y	X	WG	23°	Y	X		
L52	-672.94	3 079	798.00	R52	114.73	3 080	836.11	
L53	-814.59	3 079	725.53	R53	-101.07	3 080	435.86	
L54	-894.71	3 079	684.66	R54	-157.31	3 080	336.99	
L55	-974.53	3 079	646.96	R55	-213.84	3 080	256.05	
L56	-1 205.52	3 079	525.02	R56	-285.53	3 080	163.06	
L57	-1 430.99	3 079	414.71	R57	-345.85	3 080	095.18	
L58	-1 569.20	3 079	347.31	R58	-424.84	3 080	021.19	
L59	-2 335.78	3 078	959.79	R59	-507.23	3 079	950.22	
L60	-2 419.62	3 078	917.11	R60	-613.70	3 079	877.31	
L61	-2 445.33	3 078	897.07	R61	-756.92	3 079	791.07	
L62	-2 569.15	3 078	834.09	R62	-2 340.08	3 078	990.39	
L63	-2 594.80	3 078	830.75	R63	-2 430.85	3 078	944.95	
L64	-2 702.00	3 078	776.46	R64	-2 459.95	3 078	940.66	
L65	-2 713.97	3 078	763.10	R65	-2 531.57	3 078	938.20	
L66	-2 725.94	3 078	754.67	R66	-2 598.10	3 078	905.86	
L67	-3 460.55	3 078	385.68	R67	-2 726.36	3 078	848.47	
L68	-3 523.46	3 078	324.21	R68	-2 762.52	3 078	789.26	
L69	-3 558.05	3 078	309.23	R69	-2 829.45	3 078	749.40	
L70	-3 707.81	3 078	265.74	R70	-3 483.66	3 078	417.88	
L71	-4 599.70	3 077	814.71	R71	-3 584.12	3 078	393.72	
L72	-4 756.80	3 077	731.60	R72	-3 614.62	3 078	380.70	
L73	-4 908.78	3 077	639.77	R73	-3 731.18	3 078	287.65	
L74	-5 060.77	3 077	538.28	R74	-4 648.83	3 077	823.13	
L75	-5 204.90	3 077	431.31	R75	-4 807.86	3 077	736.28	
L76	-5 343.57	3 077	315.43	R76	-4 961.74	3 077	641.49	
L77	-5 474.34	3 077	197.03	R77	-5 111.27	3 077	538.97	
L78	-5 602.43	3 077	069.32	R78	-5 238.77	3 077	445.15	
L79	-5 729.18	3 076	932.35	R79	-5 424.47	3 077	287.86	
L80	-5 862.26	3 076	765.53	R80	-5 570.44	3 077	149.33	
L81	-5 990.26	3 076	590.36	R81	-5 693.56	3 077	017.46	
L82	-6 085.66	3 076	441.23	R82	-5 794.99	3 076	900.38	
L83	-6 203.72	3 076	232.95	R83	-5 893.65	3 076	776.40	
L84	-6 306.54	3 076	019.34	R84	-6 078.77	3 076	511.83	
L85	-6 400.82	3 075	785.16	R85	-6 166.88	3 076	362.23	
L86	-6 458.79	3 075	611.03	R86	-6 250.80	3 076	206.46	
L87	-6 507.83	3 075	438.14	R87	-6 322.06	3 076	057.92	
L88	-6 548.04	3 075	263.20	R88	-6 382.45	3 075	916.64	
L89	-6 575.23	3 075	111.39	R89	-6 439.60	3 075	765.98	
L90	-6 596.61	3 074	962.65	R90	-6 488.29	3 075	618.70	
L91	-6 613.68	3 074	783.95	R91	-6 536.76	3 075	446.10	
L92	-6 629.34	3 074	495.16	R92	-6 593.96	3 075	184.28	
L93	-6 564.26	3 074	391.68	R93	-6 621.45	3 075	006.21	
L94	-6 640.49	3 074	296.53	R94	-6 643.09	3 074	786.24	
L95	-6 649.69	3 074	123.53	R95	-6 655.53	3 074	582.58	
L96	-6 987.82	3 067	957.63	R96	-6 678.46	3 074	149.08	
L97	-6 954.50	3 067	794.33	R97	-6 684.40	3 074	039.12	
L98	-6 963.57	3 067	761.38	R98	-6 749.76	3 073	941.98	
L99	-7 006.12	3 067	625.37	R99	-6 695.73	3 073	827.81	
L100	-7 069.33	3 066	470.14	R100	-7 016.94	3 067	972.35	
R103	-7 035.66	3 067	627.04	R101	-7 045.92	3 067	824.35	
R104	-7 097.04	3 066	513.12	R102	-7 059.16	3 067	798.74	
				Vel	9	Van	9	P616/07
				Sheet		of		