
**GOVERNMENT NOTICE
GOEWERMENSKENNISGEWING**

**DEPARTMENT OF TRANSPORT
DEPARTEMENT VAN VERVOER**

No. 804

31 August 2007

**DECLARATION OF NATIONAL ROAD: SPECIAL ROUTE S27, SECTION 1:
DWAALHOEK - MALANSKRAAL: PROVINCE OF MPUMALANGA**

By virtue of section 40 (1)(a) of the South African National Roads Agency Limited and the National Roads Act, 1998 (Act No.7 of 1998), I hereby declare the route, as indicated on the subjoined plan P554/05, sheets 1 to 11, as a National Road.



MINISTER: OF TRANSPORT

No. 804

31 Augustus 2007

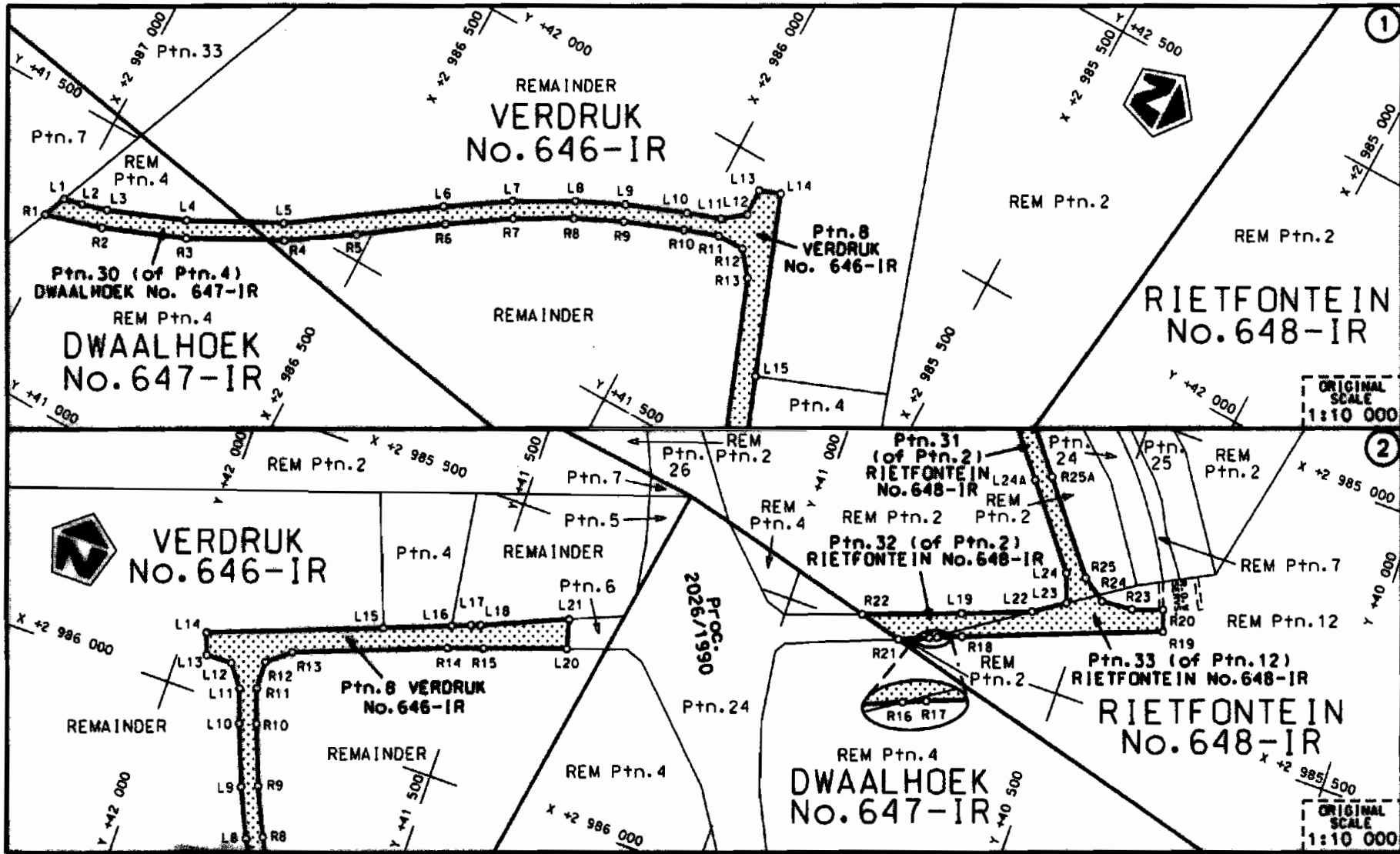
DIE SUID AFRIKAANSE NASIONALE PADAGENTSKAP BEPERK


**VERKLARING VAN NASIONALE PAD: SPESIALE ROETE S27 SEKSIE 1:
DWAALHOEK - MALANSKRAAL: PROVINSIE VAN MPUMALANGA**

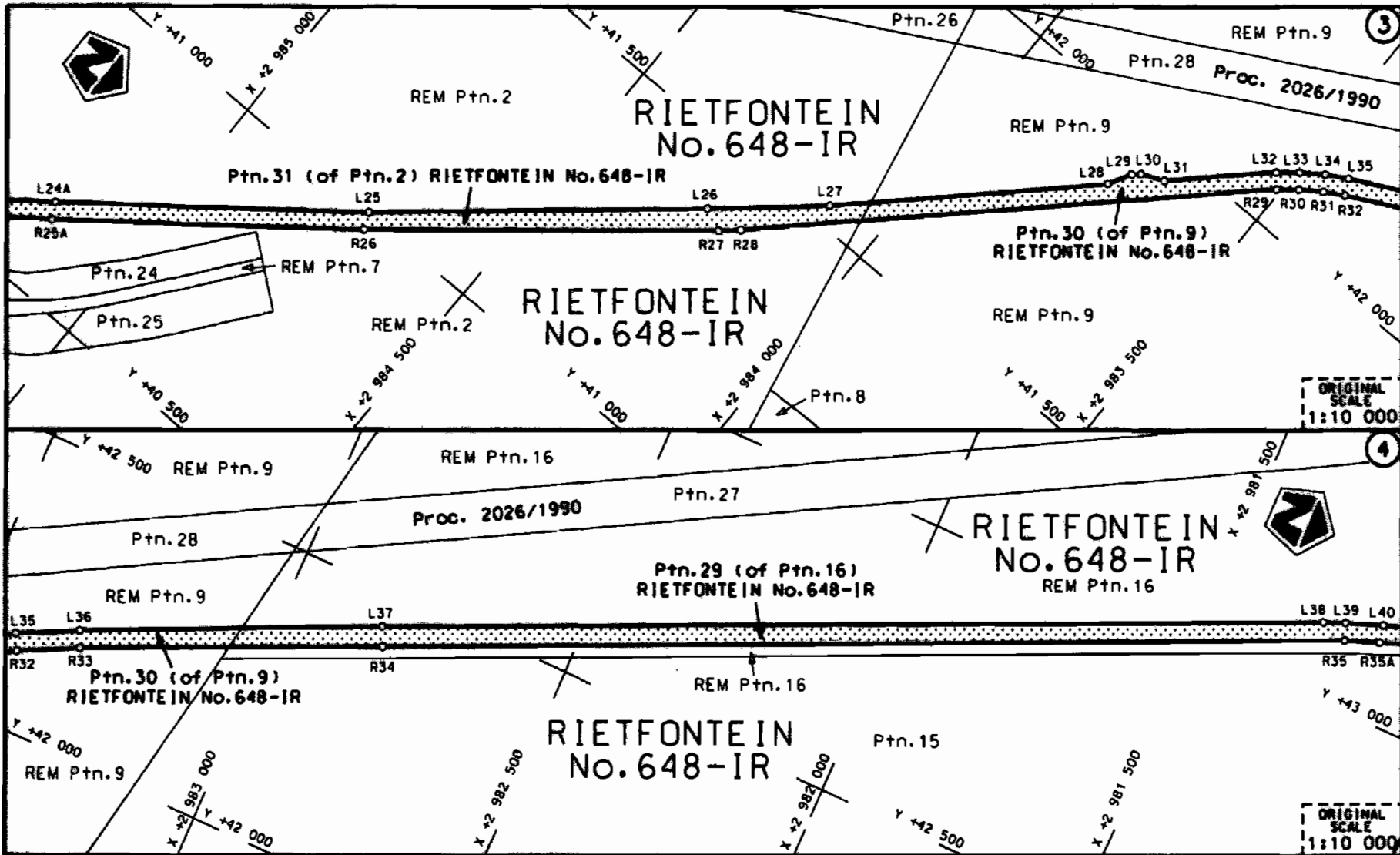
Kragtens Artikel 40(1)(a) van die Suid Afrikaanse Nasionale Padagentskap Beperk en die Nasionale Paaie Wet, 1998 (Wet No.7 van 1998), verklaar ek hiermee die roete soos aangetoon op meegaande plan P554/05 velle 1 tot 11, as Nasionale Pad



MINISTER VAN VERVOER

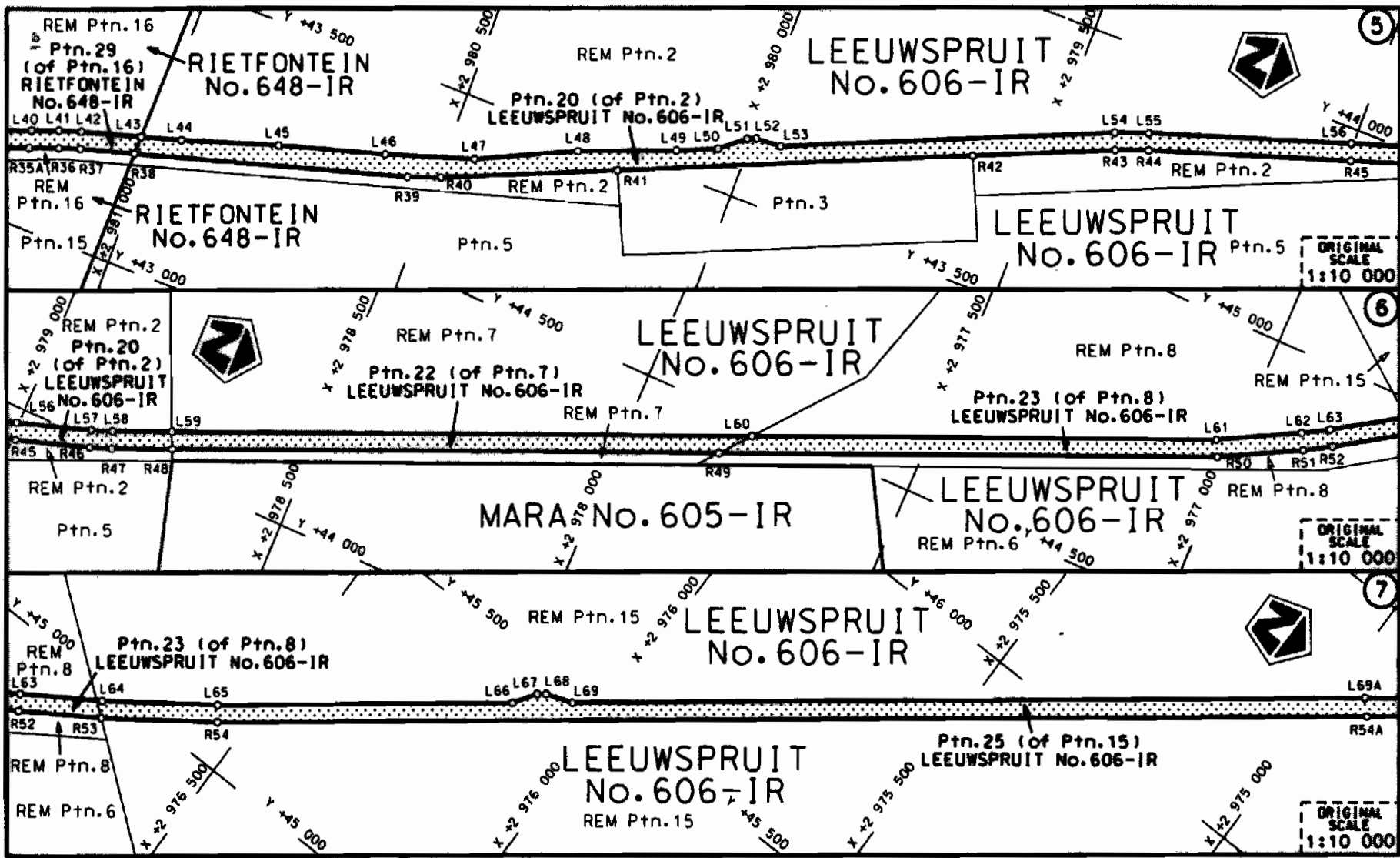



<p>Die Suid Afrikaanse Nasionale Padagentskap Beperk The South African National Roads Agency Limited</p>	<p>Die figuur getoon The figure shown</p> 	<p>steldie padreserwe voor van 'n gedeelte represents the road reserve of a portion van Nasionale Roete S27 Seksie Section of National Route 1</p>	<p>Vel Sheet 1 van of 11 Plan P554/05</p>
--	--	--	---

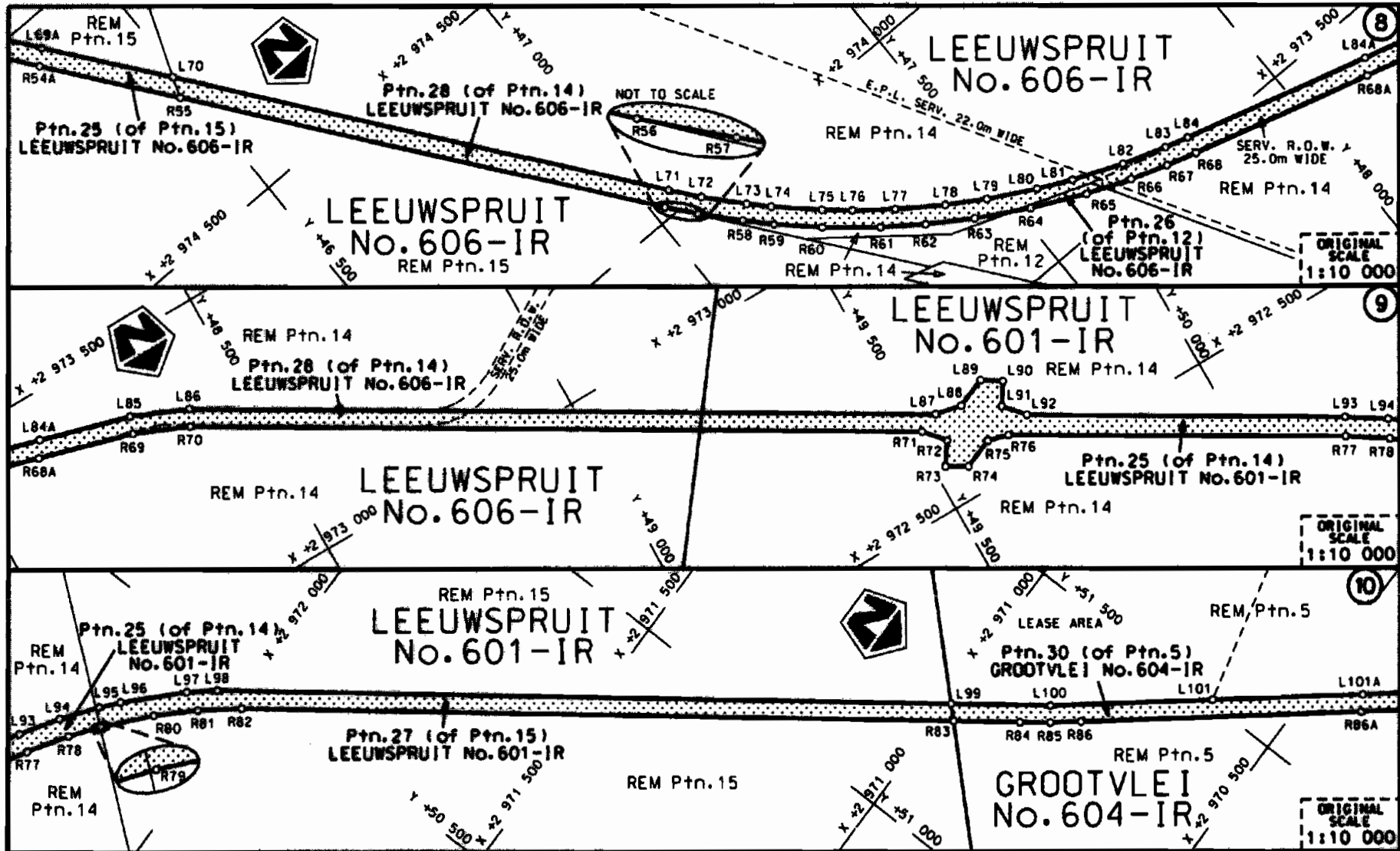


Die Suid Afrikaanse Nasionale Padagentskap Beperk	Die figuur getoon	stelde padreserwe voor van 'n gedeelte	Vel Sheet 2 van 11
The South African National Roads Agency Limited	The figure shown	represents the road reserve of a portion van Nasionale Roete S27 Seksie Section 1	Plan P554/05

D.O.9.A

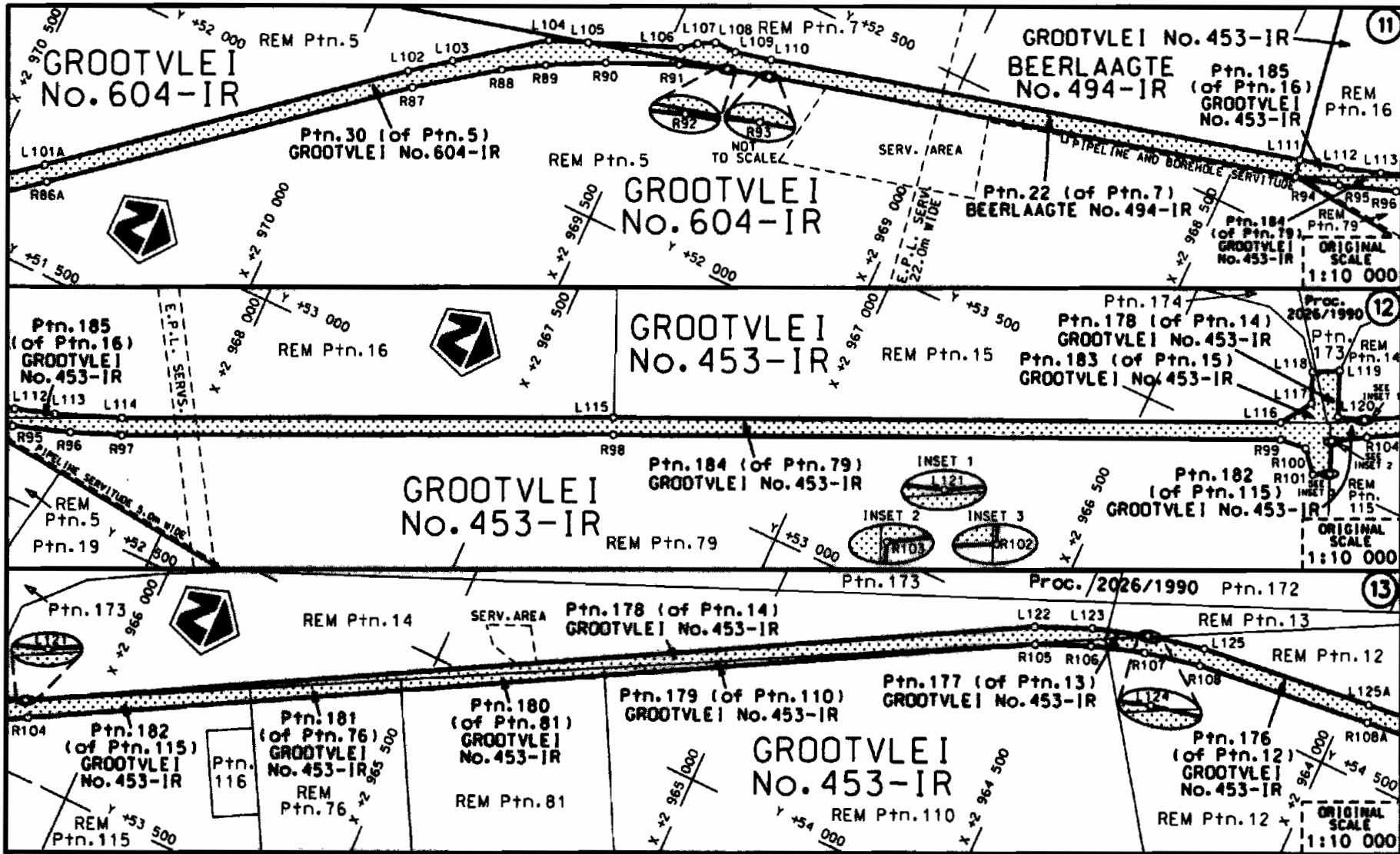


<p>Die Suid Afrikaanse Nasionale Padagentskap Beperk The South African National Roads Agency Limited</p>	<p>Die figuur getoon The figure shown</p> 	<p>steldie padreserwe voor van 'n gedeelte represents the road reserve of a portion van Nasionale Roete S27 Seksie of National Route Section</p>	<p>Vel Sheet 3 van 11 Plan P554/05</p>
--	--	--	--

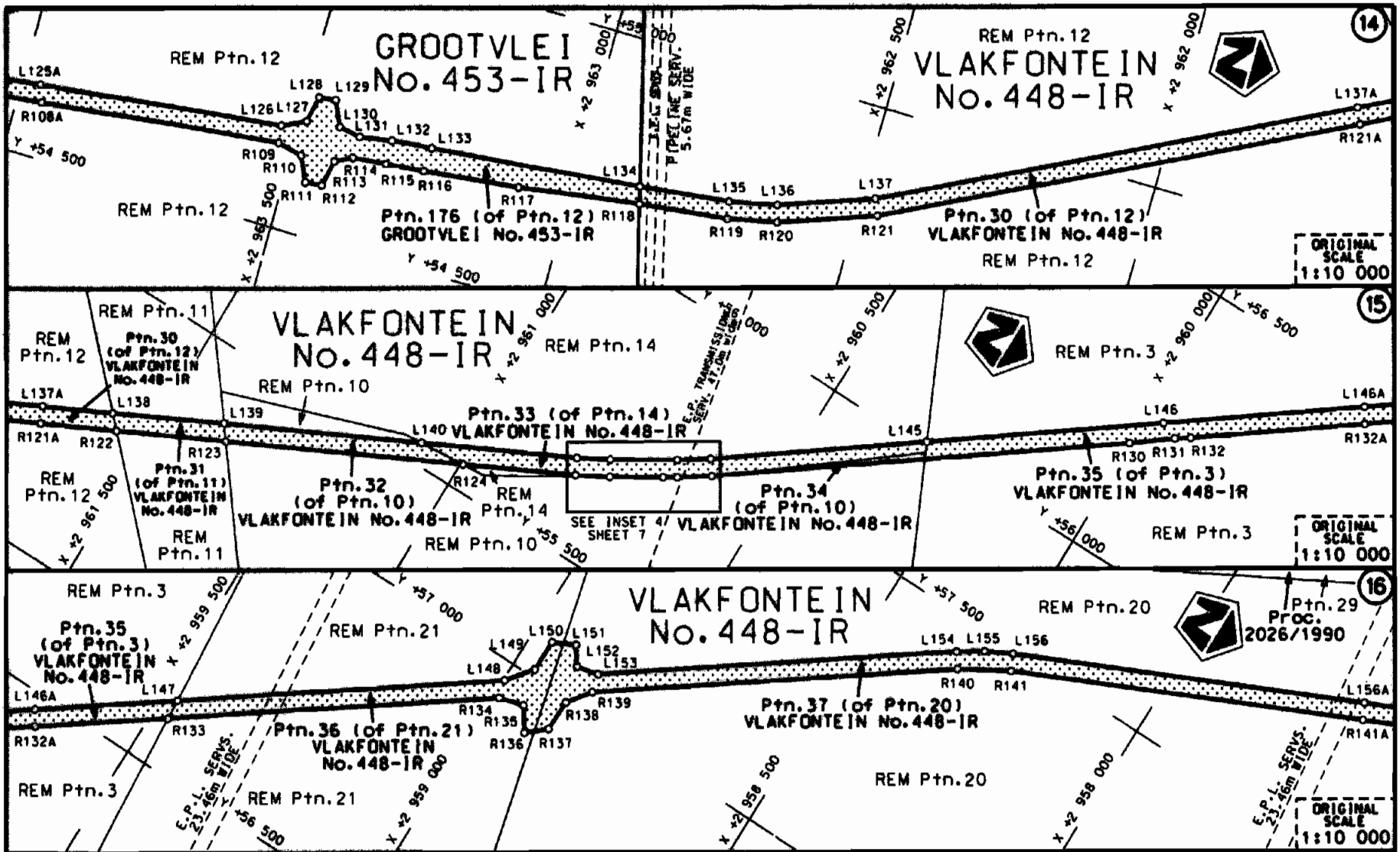


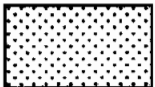
Die Suid Afrikaanse Nasionale Padagentskap Beperk	Die figuur getoon	steeldie padreserwe voor van 'n gedeelte	Vel Sheet 4 van 11
The South African National Roads Agency Limited	The figure shown	represents the road reserve of a portion van Nasionale Roete S27 Seksie Section 1	Plan P554/05

D.O.9.A

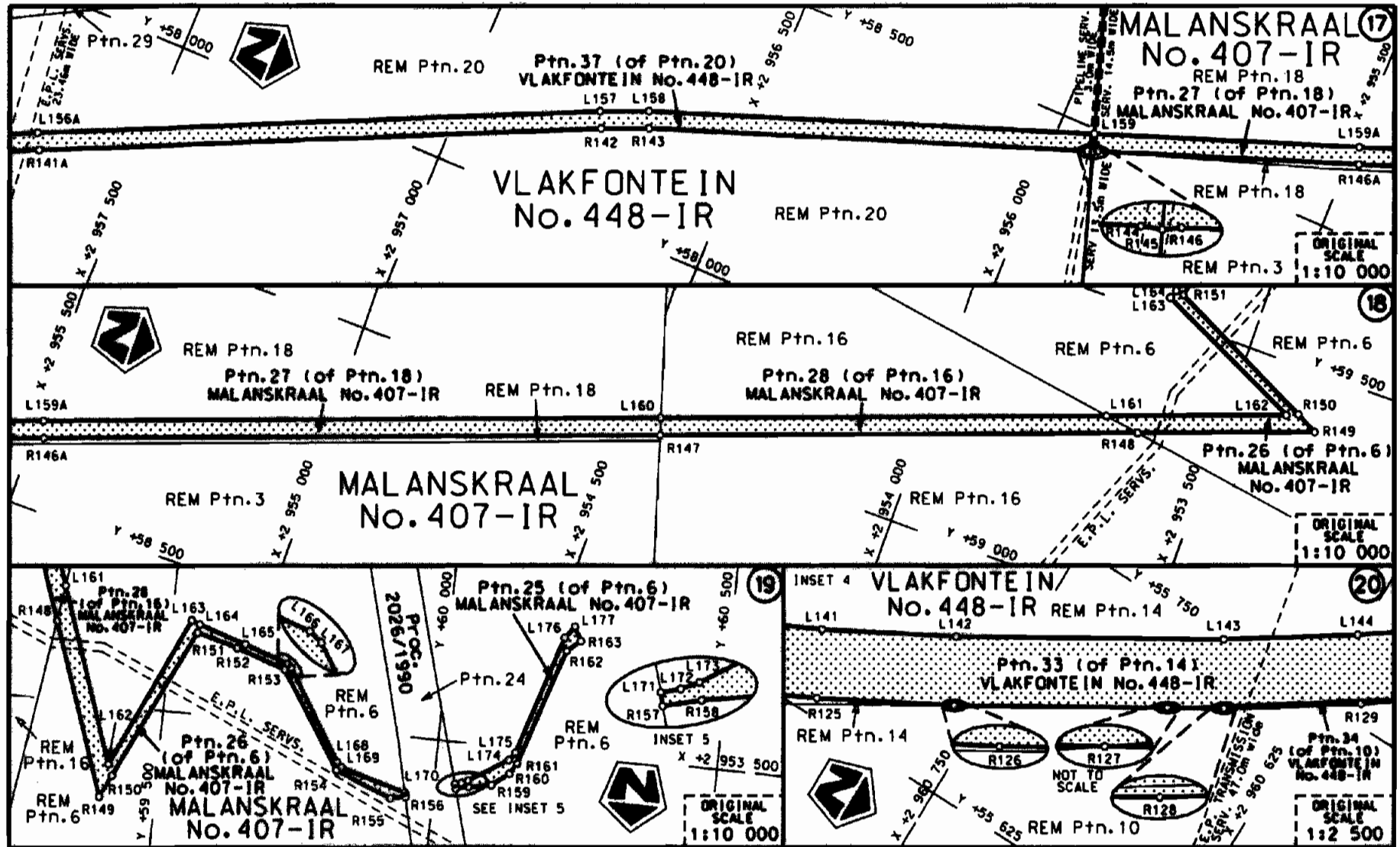


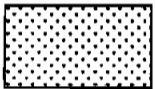
<p>Die Suid Afrikaanse Nasionale Padagentskap Beperk The South African National Roads Agency Limited</p>	<p>Die figuur getoon The figure shown</p>		<p>steldie padreserwe voor van 'n gedeelte represents the road reserve of a portion van Nasionale Roete S27 Seksie of National Route Section</p>	<p>Vel Sheet 5 van 11 of</p>
			<p>1</p>	<p>Ptan P554/05</p>



<p>Die Suid Afrikaanse Nasionale Padagentskap Beperk The South African National Roads Agency Limited</p>	<p>Die figuur getoon The figure shown</p>		<p>steldie podreserwe voor van 'n gedeelte represents the road reserve of a portion van Nasionale Roete S27 Seksie of National Route Section 1</p>	<p>Vel Sheet 6 van 11 Plan P554/05</p>
--	---	--	--	--

D.O.9.A



<p>Die Suid Afrikaanse Nasionale Pedagentskap Beperk The South African National Roads Agency Limited</p>	<p>Die figuur getoon The figure shown</p>		<p>steldie padreserwe voor van 'n gedeelte represents the road reserve of a portion van Nasionale Roete S27 Seksie 1 of National Route</p>	<p>Vel Sheet 7 van 11 Plan P554/05</p>
--	---	--	--	--

PADRESERWE KOÖRDINATE				/	ROAD RESERVE CO-ORDINATES			
LINKERKANT/LEFT HAND SIDE					REGTERKANT/RIGHT HAND SIDE			
	Y	X	WG	29°	Y	X		
L1	+41 344,02	+2 987 014,94		R1	+41 304,10	+2 987 031,77		
L2	+41 351,04	+2 986 982,17		R2	+41 332,28	+2 986 931,68		
L3	+41 363,45	+2 986 938,38		R3	+41 388,38	+2 986 790,51		
L4	+41 415,89	+2 986 804,72		R4	+41 468,78	+2 986 634,12		
L5	+41 494,66	+2 986 649,24		R5	+41 539,76	+2 986 524,35		
L6	+41 657,01	+2 986 411,12		R6	+41 632,36	+2 986 393,75		
L7	+41 723,68	+2 986 308,48		R7	+41 697,78	+2 986 293,16		
L8	+41 777,18	+2 986 210,29		R8	+41 749,84	+2 986 197,92		
L9	+41 814,78	+2 986 128,74		R9	+41 787,18	+2 986 117,00		
L10	+41 854,22	+2 986 026,14		R10	+41 825,72	+2 986 016,94		
L11	+41 873,76	+2 985 968,79		R11	+41 845,55	+2 985 958,31		
L12	+41 902,30	+2 985 931,63		R12	+41 846,08	+2 985 910,30		
L13	+41 949,09	+2 985 933,10		R13	+41 805,93	+2 985 878,32		
L14	+41 962,45	+2 985 896,98		R14	+41 545,00	+2 985 780,39		
L15	+41 663,29	+2 985 784,52		R15	+41 485,18	+2 985 760,42		
L16	+41 550,80	+2 985 742,19		L20	+41 344,48	+2 985 711,55		
L17	+41 518,72	+2 985 729,65		R21	+40 795,51	+2 985 503,10		
L18	+41 502,60	+2 985 724,18		R16	+40 744,33	+2 985 482,38		
L21	+41 357,25	+2 985 662,07		R17	+40 731,03	+2 985 477,00		
R22	+40 869,97	+2 985 483,25		R18	+40 689,88	+2 985 460,93		
L19	+40 703,96	+2 985 423,43		R19	+40 356,31	+2 985 335,70		
L22	+40 586,52	+2 985 379,44		R20	+40 368,72	+2 985 299,76		
L23	+40 534,20	+2 985 345,31		R23	+40 421,85	+2 985 317,51		
L24	+40 551,48	+2 985 296,63		R24	+40 475,91	+2 985 321,69		
L25	+41 002,41	+2 984 719,37		R25	+40 516,38	+2 985 293,10		
L26	+41 391,44	+2 984 262,47		R26	+40 974,20	+2 984 706,34		
L27	+41 534,38	+2 984 098,36		R27	+41 375,06	+2 984 222,25		
L28	+41 880,11	+2 983 743,27		R28	+41 401,78	+2 984 192,53		
L29	+41 920,11	+2 983 721,34		R29	+42 064,29	+2 983 507,45		
L30	+41 931,64	+2 983 709,27		R30	+42 089,54	+2 983 476,51		
L31	+41 949,11	+2 983 669,55		R31	+42 114,18	+2 983 440,17		
L32	+42 087,00	+2 983 526,91		R32	+42 133,43	+2 983 406,40		
L33	+42 113,44	+2 983 493,90		R33	+42 184,30	+2 983 305,18		
L34	+42 139,32	+2 983 456,87		R34	+42 407,28	+2 982 812,69		
L35	+42 160,31	+2 983 419,92		R35	+43 114,21	+2 981 259,80		
L36	+42 211,51	+2 983 317,92		R36	+43 153,77	+2 981 152,85		
L37	+42 438,75	+2 982 827,90		R37	+43 165,96	+2 981 115,93		
L38	+43 127,13	+2 981 307,36		R38	+43 192,69	+2 981 022,59		
L39	+43 142,11	+2 981 270,87		R39	+43 328,47	+2 980 548,55		
L40	+43 165,07	+2 981 208,68		R40	+43 348,41	+2 980 492,78		
L41	+43 181,93	+2 981 163,29		R41	+43 470,99	+2 980 203,34		
L42	+43 194,65	+2 981 124,70		R42	+43 717,24	+2 979 623,93		
L43	+43 224,11	+2 981 021,84		R43	+43 815,63	+2 979 391,64		
L44	+43 244,18	+2 980 952,21		R44	+43 836,22	+2 979 336,15		
L45	+43 297,47	+2 980 785,83		R45	+43 946,20	+2 978 994,01		
L46	+43 351,28	+2 980 599,25		R46	+43 986,85	+2 978 867,67		
L47	+43 399,75	+2 980 448,53		R47	+44 000,73	+2 978 830,55		
L48	+43 477,09	+2 980 281,87		R48	+44 042,94	+2 978 731,47		
L49	+43 540,27	+2 980 117,54		R49	+44 426,15	+2 977 831,89		
L50	+43 568,94	+2 980 050,08		R50	+44 772,28	+2 977 019,38		
L51	+43 603,08	+2 980 007,95		R51	+44 843,54	+2 976 885,12		

Van	8	Van	11	P554/05
Sheet		of		

PADRESERWE KOÖRDINATE				/	ROAD RESERVE CO-ORDINATES			
LINKERKANT/LEFT HAND SIDE					REGTERKANT/RIGHT HAND SIDE			
	Y	X	WG	29°	Y	X		
L52	+43 609,56	+2 979 993,06		R52	+44 870,27	+2 976 839,61		
L53	+43 612,44	+2 979 947,84		R53	+44 949,83	+2 976 714,87		
L54	+43 843,55	+2 979 402,80		R54	+45 070,54	+2 976 545,31		
L55	+43 864,25	+2 979 346,48		R55	+46 477,93	+2 974 721,93		
L56	+43 974,69	+2 979 003,87		R56	+47 022,65	+2 974 019,60		
L57	+44 015,16	+2 978 877,59		R57	+47 060,97	+2 973 973,32		
L58	+44 028,77	+2 978 841,66		R58	+47 114,09	+2 973 913,24		
L59	+44 070,43	+2 978 743,85		R59	+47 152,53	+2 973 873,48		
L60	+44 476,68	+2 977 790,09		R60	+47 214,97	+2 973 814,52		
L61	+44 799,07	+2 977 033,22		R61	+47 294,19	+2 973 748,63		
L62	+44 869,81	+2 976 899,83		R62	+47 359,53	+2 973 701,23		
L63	+44 895,90	+2 976 855,31		R63	+47 432,56	+2 973 653,35		
L64	+44 974,61	+2 976 731,80		R64	+47 520,53	+2 973 603,46		
L65	+45 094,56	+2 976 563,17		R65	+47 612,57	+2 973 559,16		
L66	+45 418,45	+2 976 144,56		R66	+47 689,75	+2 973 528,25		
L67	+45 457,03	+2 976 119,53		R67	+47 754,56	+2 973 505,57		
L68	+45 467,08	+2 976 106,45		R68	+47 807,61	+2 973 488,80		
L69	+45 483,07	+2 976 060,71		R69	+48 295,48	+2 973 349,66		
L70	+46 491,17	+2 974 757,53		R70	+48 389,57	+2 973 309,23		
L71	+47 047,10	+2 974 038,39		R71	+49 514,64	+2 972 646,01		
L72	+47 084,40	+2 973 992,09		R72	+49 545,74	+2 972 610,37		
L73	+47 137,90	+2 973 931,72		R73	+49 520,68	+2 972 572,71		
L74	+47 168,74	+2 973 899,79		R74	+49 556,12	+2 972 552,31		
L75	+47 234,07	+2 973 838,16		R75	+49 607,91	+2 972 573,44		
L76	+47 274,86	+2 973 803,19		R76	+49 644,96	+2 972 563,57		
L77	+47 334,79	+2 973 755,74		R77	+50 161,82	+2 972 260,65		
L78	+47 407,41	+2 973 704,74		R78	+50 227,75	+2 972 217,73		
L79	+47 470,70	+2 973 665,69		R79	+50 275,35	+2 972 181,89		
L80	+47 550,87	+2 973 621,91		R80	+50 348,54	+2 972 117,64		
L81	+47 609,66	+2 973 593,67		R81	+50 402,43	+2 972 060,53		
L82	+47 695,50	+2 973 557,72		R82	+50 452,36	+2 971 999,58		
L83	+47 772,30	+2 973 531,47		R83	+51 199,90	+2 970 973,54		
L84	+47 813,36	+2 973 519,13		R84	+51 269,16	+2 970 877,53		
L85	+48 305,54	+2 973 378,17		R85	+51 300,92	+2 970 834,47		
L86	+48 403,32	+2 973 336,28		R86	+51 335,36	+2 970 792,03		
L87	+49 550,77	+2 972 659,80		R87	+52 073,15	+2 969 881,38		
L88	+49 597,18	+2 972 650,04		R88	+52 167,98	+2 969 750,29		
L89	+49 649,45	+2 972 671,02		R89	+52 208,50	+2 969 683,10		
L90	+49 683,21	+2 972 649,65		R90	+52 257,23	+2 969 588,09		
L91	+49 659,68	+2 972 612,63		R91	+52 309,63	+2 969 468,24		
L92	+49 690,80	+2 972 577,28		R92	+52 338,47	+2 969 386,86		
L93	+50 177,75	+2 972 289,96		R93	+52 358,12	+2 969 314,42		
L94	+50 242,49	+2 972 248,53		R94	+52 595,00	+2 968 393,19		
L95	+50 301,36	+2 972 204,53		R95	+52 614,85	+2 968 316,61		
L96	+50 330,93	+2 972 179,11		R96	+52 647,23	+2 968 220,77		
L97	+50 415,81	+2 972 095,86		R97	+52 680,38	+2 968 135,09		
L98	+50 451,07	+2 972 053,95		R98	+53 046,01	+2 967 337,93		
L99	+51 221,28	+2 970 995,08		R99	+53 532,07	+2 966 256,04		
L100	+51 324,88	+2 970 852,46		R100	+53 536,58	+2 966 209,40		
L101	+51 506,78	+2 970 627,93		R101	+53 500,91	+2 966 178,77		
L102	+52 096,42	+2 969 900,27		R102	+53 514,31	+2 966 151,81		
				Vel	9	Van	11	P554/05
				Sheet		of		

PADRESERWE KOÖRDINATE				/	ROAD RESERVE CO-ORDINATES			
LINKERKANT/LEFT HAND SIDE					REGTERKANT/RIGHT HAND SIDE			
	Y	X	WG	29°	Y	X		
L103	+52 145,75	+2 969 835,93		R103	+53 567,70	+2 966 172,44		
L104	+52 250,68	+2 969 696,32		R104	+53 599,54	+2 966 118,52		
L105	+52 276,50	+2 969 631,86		R105	+54 470,38	+2 964 547,46		
L106	+52 337,93	+2 969 478,21		R106	+54 509,97	+2 964 456,09		
L107	+52 356,82	+2 969 454,40		R107	+54 539,34	+2 964 364,66		
L108	+52 372,04	+2 969 425,52		R108	+54 560,22	+2 964 267,27		
L109	+52 372,04	+2 969 386,54		R109	+54 645,59	+2 963 526,38		
L110	+52 386,25	+2 969 323,80		R110	+54 635,80	+2 963 480,02		
L111	+52 624,87	+2 968 398,10		R111	+54 592,86	+2 963 460,08		
L112	+52 643,39	+2 968 325,77		R112	+54 596,28	+2 963 430,22		
L113	+52 664,62	+2 968 258,77		R113	+54 642,60	+2 963 420,31		
L114	+52 707,76	+2 968 147,27		R114	+54 657,16	+2 963 390,46		
L115	+53 073,38	+2 967 349,91		R115	+54 662,60	+2 963 330,87		
L116	+53 558,98	+2 966 268,25		R116	+54 669,59	+2 963 262,16		
L117	+53 611,95	+2 966 232,11		R117	+54 689,11	+2 963 092,75		
L118	+53 662,51	+2 966 253,39		R118	+54 720,42	+2 962 877,19		
L119	+53 684,98	+2 966 210,15		R119	+54 738,32	+2 962 720,03		
L120	+53 610,39	+2 966 179,77		R120	+54 756,65	+2 962 632,29		
L121	+53 624,94	+2 966 134,80		R121	+54 816,60	+2 962 463,55		
L122	+54 497,41	+2 964 560,95		R122	+55 266,65	+2 961 555,26		
L123	+54 538,17	+2 964 466,84		R123	+55 353,57	+2 961 379,44		
L124	+54 568,36	+2 964 372,12		R124	+55 543,39	+2 960 996,08		
L125	+54 589,93	+2 964 272,26		R125	+55 632,69	+2 960 815,88		
L126	+54 675,50	+2 963 529,83		R126	+55 662,25	+2 960 762,26		
L127	+54 695,42	+2 963 486,77		R127	+55 711,73	+2 960 680,56		
L128	+54 741,79	+2 963 476,92		R128	+55 724,67	+2 960 659,20		
L129	+54 745,27	+2 963 447,17		R129	+55 758,69	+2 960 608,21		
L130	+54 702,31	+2 963 427,19		R130	+56 198,93	+2 960 003,62		
L131	+54 695,42	+2 963 388,41		R131	+56 247,93	+2 959 939,37		
L132	+54 704,97	+2 963 331,20		R132	+56 263,66	+2 959 915,91		
L133	+54 711,87	+2 963 259,27		R133	+56 587,52	+2 959 470,72		
L134	+54 749,68	+2 962 884,81		R134	+56 937,41	+2 958 989,17		
L135	+54 767,93	+2 962 724,83		R135	+56 949,96	+2 958 946,21		
L136	+54 786,02	+2 962 639,87		R136	+56 910,48	+2 958 918,90		
L137	+54 844,10	+2 962 475,41		R137	+56 938,77	+2 958 886,27		
L138	+55 289,12	+2 961 577,07		R138	+56 994,73	+2 958 885,22		
L139	+55 378,56	+2 961 398,70		R139	+57 035,15	+2 958 855,07		
L140	+55 536,44	+2 961 078,09		R140	+57 419,48	+2 958 327,73		
L141	+55 659,39	+2 960 829,75		R141	+57 468,03	+2 958 245,17		
L142	+55 688,29	+2 960 777,32		R142	+58 159,45	+2 956 751,77		
L143	+55 750,08	+2 960 675,16		R143	+58 193,11	+2 956 673,13		
L144	+55 783,31	+2 960 625,24		R144	+58 459,20	+2 955 936,71		
L145	+56 010,83	+2 960 313,00		R145	+58 461,47	+2 955 927,33		
L146	+56 260,23	+2 959 970,69		R146	+58 465,54	+2 955 919,58		
L147	+56 622,51	+2 959 473,40		R147	+59 002,37	+2 954 437,83		
L148	+56 968,34	+2 958 997,74		R148	+59 292,97	+2 953 637,20		
L149	+57 012,90	+2 958 962,85		R149	+59 400,68	+2 953 340,53		
L150	+57 068,58	+2 958 961,97		R150	+59 419,68	+2 953 378,92		
L151	+57 087,97	+2 958 923,53		R151	+59 547,13	+2 953 641,97		
L152	+57 057,37	+2 958 902,01		R152	+59 620,70	+2 953 622,68		
L153	+57 066,50	+2 958 863,15		R153	+59 710,04	+2 953 593,93		

Vel	10	Van	11	P554/05
Sheet		of		

PADRESERWE KOÖRDINATE				ROAD RESERVE CO-ORDINATES		
LINKERKANT/LEFT HAND SIDE				REGTERKANT/RIGHT HAND SIDE		
	Y	X	WG 29°		Y	X
L154	+57 443,86	+2 958 345,45	R154	+59 821,52	+2 953 429,29	
L155	+57 471,35	+2 958 303,39	R155	+59 924,74	+2 953 390,83	
L156	+57 494,73	+2 958 258,55	R156	+59 951,52	+2 953 395,67	
L157	+58 186,47	+2 956 765,01	R157	+60 039,55	+2 953 418,99	
L158	+58 220,66	+2 956 684,77	R158	+60 062,20	+2 953 424,67	
L159	+58 491,17	+2 955 937,16	R159	+60 102,79	+2 953 431,89	
L160	+59 031,43	+2 954 446,76	R160	+60 132,49	+2 953 455,03	
L161	+59 302,33	+2 953 699,56	R161	+60 144,42	+2 953 473,57	
L162	+59 411,35	+2 953 398,32	R162	+60 211,90	+2 953 678,28	
L163	+59 534,63	+2 953 661,91	R163	+60 235,30	+2 953 697,43	
L164	+59 549,71	+2 953 656,15				
L165	+59 634,53	+2 953 630,14				
L166	+59 713,70	+2 953 604,64				
L167	+59 721,42	+2 953 598,69				
L168	+59 821,24	+2 953 443,59				
L169	+59 830,43	+2 953 435,37				
L170	+59 949,56	+2 953 403,09				
L171	+60 037,65	+2 953 426,86				
L172	+60 049,23	+2 953 429,94				
L173	+60 059,92	+2 953 434,99				
L174	+60 128,61	+2 953 478,13				
L175	+60 139,72	+2 953 492,11				
L176	+60 206,17	+2 953 700,16				
L177	+60 222,54	+2 953 721,29				

Vel	11	Van	11	P554/05
Sheet		of		